



BIOLOGY

BOOKS - MAXIMUM PUBLICATION

Structural Organisation in Animals

Exercise

1. Which one of the following types of cell is involved in making of the inner walls of large blood vessels?

- A. Cuboidal epithelium
- B. Columnar epithelium
- C. Squamous epithelium
- D. stratified epithelium

Answer: C



Watch Video Solution

2. To which one of the following categories does adipose tissue belong?

A. Epithelial

B. Connective

C. Muscular

D. Neural

Answer: B



Watch Video Solution

3. Which one of the following is not a connective tissue?

A. Bone

B. Cartilage

C. Blood

D. Muscles

Answer: D



Watch Video Solution

4. Which one of the following statements, is true for cockroach?

- A. The number of ovarioles in each ovary are ten.
- B. The larval stage is called caterpillar
- C. Anal styles are absent in females
- D. They are ureotelic

Answer: C



Watch Video Solution

5. Match the following with reference to Cockroach and choose the correct option

A) Phallomere	i) Chain of developing ova
B) Gonopore	ii) Bundles of sperm
C) Spermatophore	iii) Opening of the ejaculatory duct
D) Ovarioles	iv) The external genitalia

A. A-iii, B-iv, C-ii, D-i

B. A-iv, B-iii, C-ii, D-i

C. A-iv, B-ii, C-iii, D-i

D. A-ii, B-iv, C-iii, D-i

Answer: B



[Watch Video Solution](#)

6. Complete the following sentences: The most common species of frog found in India is



[Watch Video Solution](#)

7. Complete the following sentences: Blood Vascular system of cockroach is.....



[Watch Video Solution](#)

8. Name the respiratory organs of insects.



[Watch Video Solution](#)

9. Note the relationship between the first two words and suggests a suitable word. Dendrons
: Dendrites , Axon :



[Watch Video Solution](#)

10. Note the relationship between the first two words and suggests a suitable word. Mast cells : Histamine , Fibroblast :



Watch Video Solution

11. Which among the following is the bone cell (Leukocyte, Chondrocyte, Osteocyte, Thrombocyte).



Watch Video Solution

12. Earthworm, segments 14-16 are covered by a prominent dark band of glandular tissue called (Setae, Clitellum, Typhlosole, None of these)



[Watch Video Solution](#)

13. Neuroglia make up more than one half the volume of neural tissue in our body'. Write the function of neuroglial cells



[Watch Video Solution](#)

14. Earthworm, segments 14-16 are covered by a prominent dark band of glandular tissue called (Setae, Clitellum, Typhlosole, None of these)

A. 12 – 16

B. 14 – 16

C. 10 – 14

D. 16 – 18

Answer: B



Watch Video Solution

15. make up more than one half the volume of neural tissue in our body.



[Watch Video Solution](#)

16. Which epithelial tissue is present in the tubular parts of nephrons in kidneys?



[Watch Video Solution](#)

17. Heart is made of

- A. Epithelial tissue and Muscular tissue.
- B. Muscular tissue and neural tissue.
- C. Muscular tissue and connective tissue.
- D. All the four types of tissues.

Answer: D



Watch Video Solution

18. Write the cellular components of blood.



Watch Video Solution

19. In earthworm, setae are absent in the segments.

- A. First and last
- B. Clitellum only
- C. First, last and clitellum
- D. Peristomium and Clitellum

Answer: C



Watch Video Solution

20. Intestine of earthworm contain a special organ which help in absorption. Identify the organ.



Watch Video Solution

21. Name the structures which help in locomotion in Earthworm.



[Watch Video Solution](#)

22. In cockroach the fertilized eggs are encased in capsule called



[Watch Video Solution](#)

23. Regarding the blood vascular system of frog, some statements are given below. Check whether these are True or False and make corrections if necessary. a) Open type. b) Sinus

venosus join the right atrium. c) RBC is non-nucleated. d) Circulation is achieved by the pumping action of the heart.



[Watch Video Solution](#)

24. You are given two cockroaches and the teacher asked to display the mouth parts of male cockroach. How will you identify the male cockroach?



[Watch Video Solution](#)

25. You are given two cockroaches and the teacher asked to display the mouth parts of male cockroach. Name the mouth parts of cockroach.



Watch Video Solution

26. Give one word for the following. Tissue attach one bone to another.



Watch Video Solution

27. Give one word for the following. The structures protect and support neurons in neural system.



[Watch Video Solution](#)

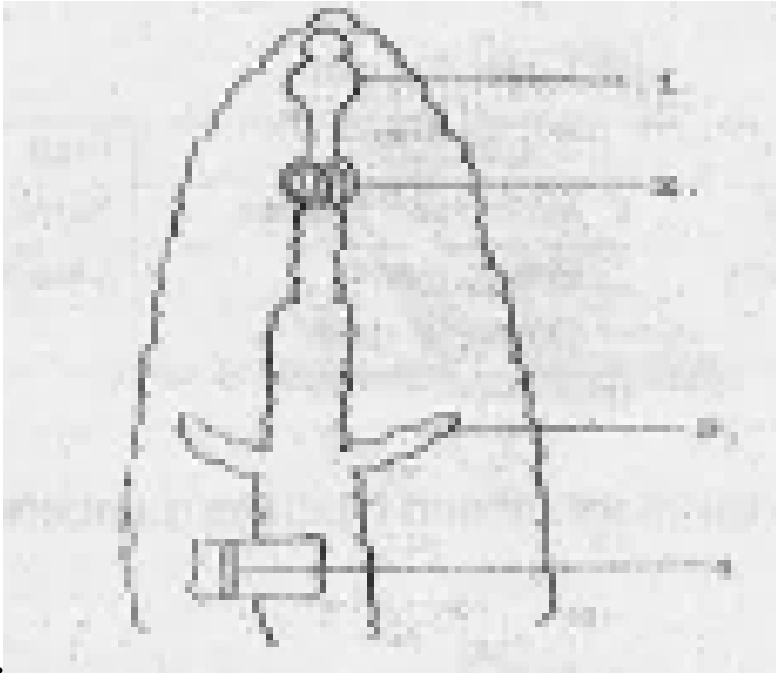
28. Match the following.

A	B
Cuboidal epithelium	Fallopian tube
Squamous epithelium	Ducts of glands
Columnar epithelium	alveoli
Ciliated epithelium	intestine



[Watch Video Solution](#)

29. Copy the diagram and label the numbered



parts.



Watch Video Solution

30. Observe the diagram. Name the above connective tissue. Where they found in our



body ?



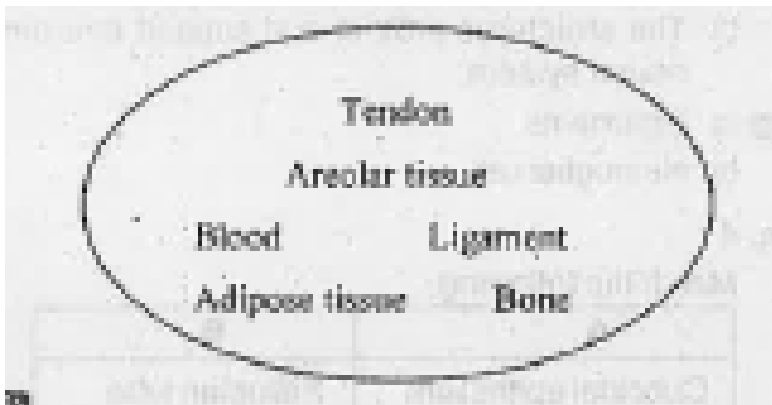
[Watch Video Solution](#)

31. Observe the diagram. Name any two
principle cell found in it.



Watch Video Solution

32. Observe the pool of connective tissues carefully. Classify them under three headings.





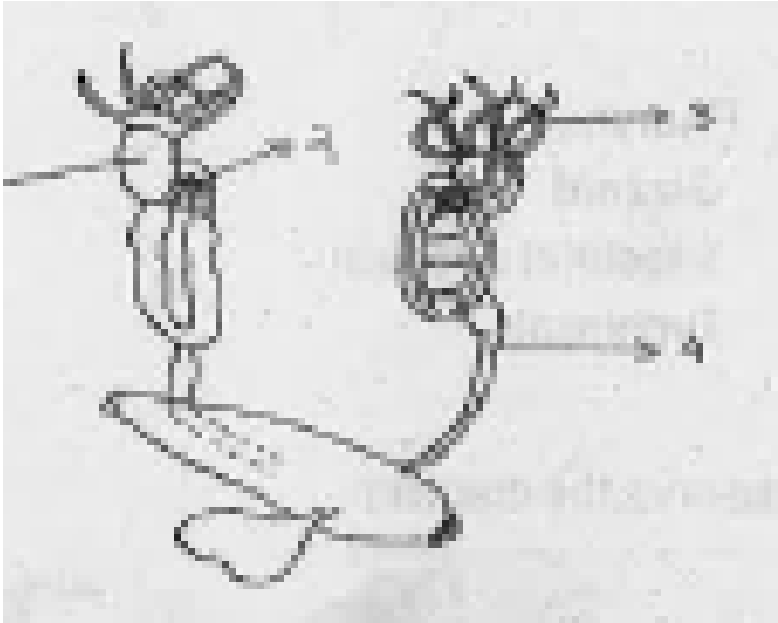
[Watch Video Solution](#)

33. Anatomical structures of 3 animals are given below. Identify the 3 animals and arrange the structures into 3 separate groups. (Typhlosole, Malpighian tubules, Blood glands, Cloaca, Phallic gland, Kidney, Collateral Gland).



[Watch Video Solution](#)

34. Copy the diagram and label the numbered



parts.



Watch Video Solution

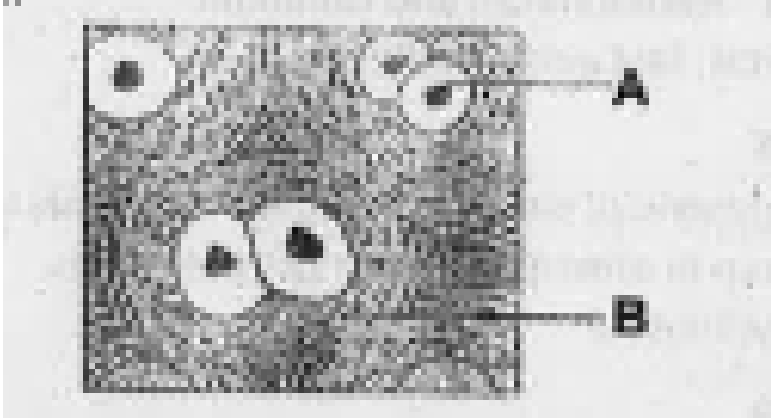
35. Match the following.

Column A	Column B
1) Haemocoelom	1) Frog
2) Typhlosole	2) Ascaris
3) Cloaca	3) Earthworm
4) Pseudocoelom	4) Cockroach



[Watch Video Solution](#)

36. Name the labeled parts a, b in the diagram given below :



[Watch Video Solution](#)

37. Circulating fluid of cockroach is colourless.

Name the circulating fluid.



[Watch Video Solution](#)

38. Circulating fluid of cockroach is colourless.

Name the cell concerned in it.



Watch Video Solution

39. Give one word for the following. Tissue specialised to store fats.



Watch Video Solution

40. Give one word for the following. Tissue contains fibroblasts, macrophages and mast cells



Watch Video Solution

41. Give one word for the following. Tissue attach skeletal muscles to bones.



Watch Video Solution

42. You are given permanent slides of a bone and cartilage. How will you identify them using a microscope.



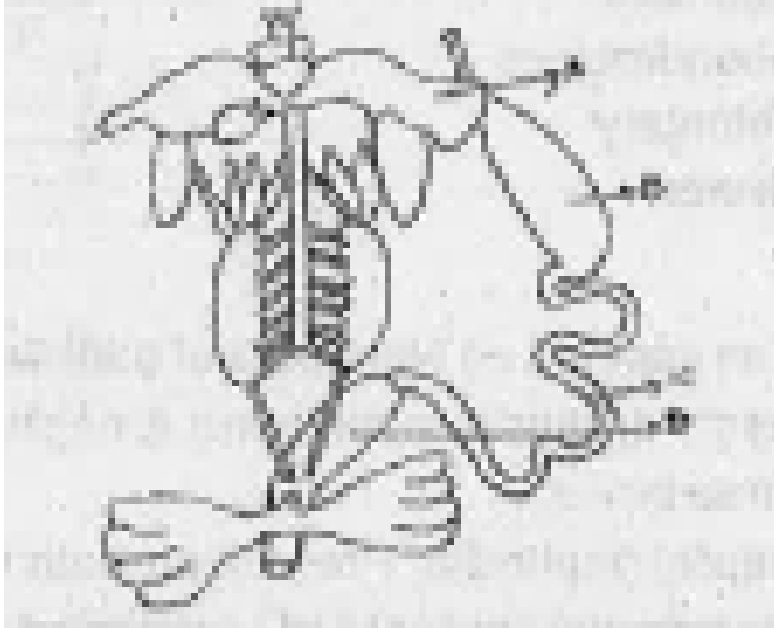
Watch Video Solution

43. Frogs maintain ecological balance. As a biological student do you agree with this statement. Why?



Watch Video Solution

44. Observe the diagram given below and label the parts A, B, C, D.



[Watch Video Solution](#)

45. While viewing the fallopian tube through CT scan we can find large number of cilia. Mention the function of cilia.



Watch Video Solution

46. While viewing the fallopian tube through CT scan we can find large number of cilia. Mention the function of cilia.



Watch Video Solution

47. An earth worm respire through skin and excretes through nephridia' Rewrite the above sentence beginning with 'A cockroach..... making appropriate changes



Watch Video Solution

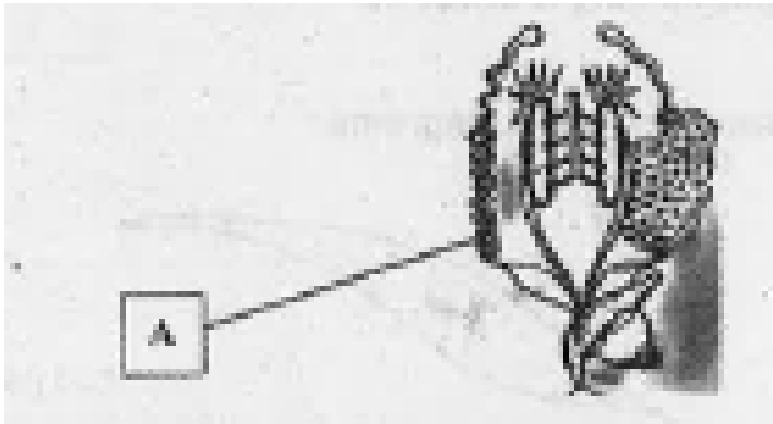
48. Match the following.

1) Hypopharynx	Food grinding
2) Nephridium	Food absorption
3) Gizzard	Bone cell
4) Typhlosole	Phallomere
5) Osteocyte	Tongue
6) Genitalia	Earthworm
	Frog



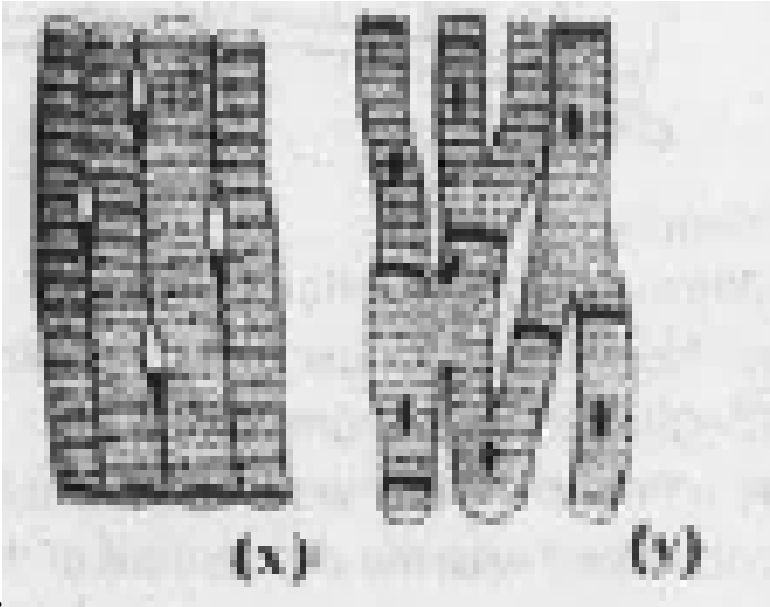
Watch Video Solution

49. Identify the diagram and label the part marked A.



Watch Video Solution

50. Observe the given diagram. Identify X and

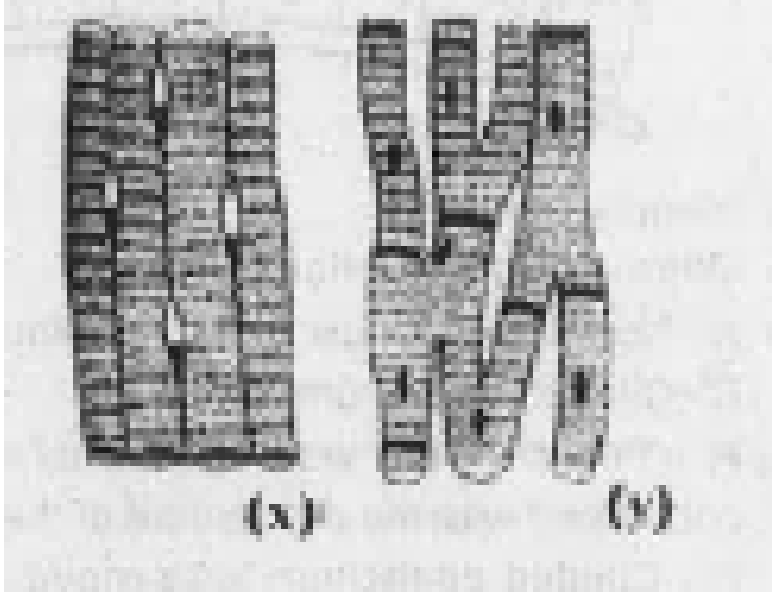


Y.



[Watch Video Solution](#)

51. Observe the given diagram. Write any two characters of X and Y.



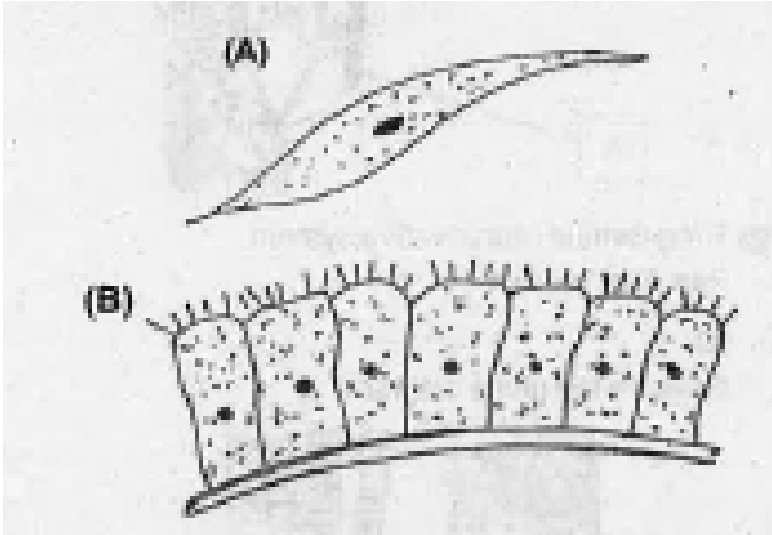
[Watch Video Solution](#)

52. There are some physiological similarities between typhlosole and villi. Substantiate your answer.



[Watch Video Solution](#)

53. Observe the given diagrams. Identify A and

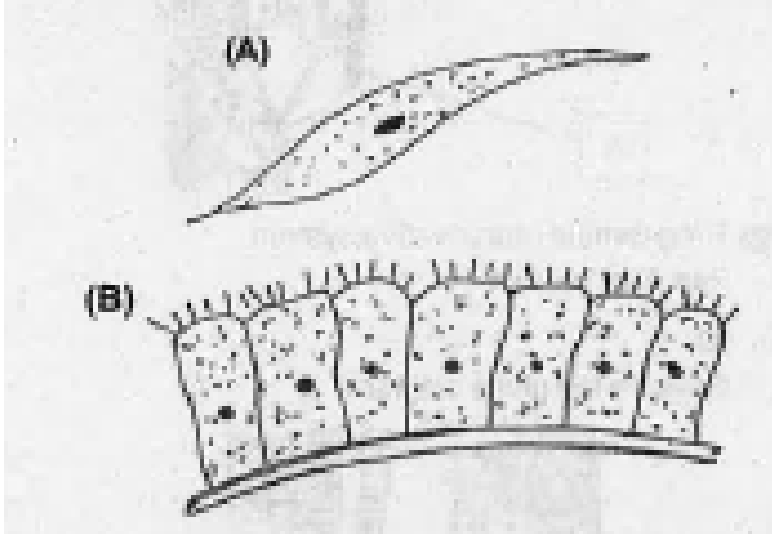


B



Watch Video Solution

54. Observe the given diagrams. Write any one
function of each.



[Watch Video Solution](#)

55. Write the significance of : Blood

[Watch Video Solution](#)

56. Neuroglia make up more than one half the volume of neural tissue in our body'. Write the function of neuroglial cells



[Watch Video Solution](#)

57. Classify the given terms into three columns and give appropriate headings. Striated, heart muscle, intercalated disc, biceps, visceral organs, no striation.



[Watch Video Solution](#)

58. Where do you find the following structure
in human body : Chondrocytes



Watch Video Solution

59. Where do you find the following structure
in human body : Axon



Watch Video Solution

60. Where do you find the following structure
in human body : Osteocytes



Watch Video Solution

61. Where do you find the following structure
in human body : Plasma



Watch Video Solution

62. Write the suitable word for the 4th place.

Muscle to bone-Tendon, Bone to Bone -



Watch Video Solution

63. Write the suitable word for the 4th place.

Bone - osteocytes , Cartilage -



Watch Video Solution

64. Write the suitable word for the 4th place.

Cardiac Muscle - Involuntary, Striated Muscle -

.....



Watch Video Solution

65. Write the suitable word for the 4th place.

Contractile cell - Muscle, Excitable cell -.....



Watch Video Solution

66. Give an account on Nephridia of earthworm



Watch Video Solution

67. You are given an earthworm for dissection, how will you identify its anterior, posterior, dorsal and ventral sides



Watch Video Solution

68. Blood cell of earthworm lack haemoglobin.

But blood of earthworm is red in colour. How do you account for it?



Watch Video Solution

69. Match the related items from B and C with

Column

A.

A	B	C
Earthworm	Rana	Americana
Cockroach	Pheretima	Tigrina
Frog	Periplaneta	Prostomium



Watch Video Solution

70. Copy and complete the animals on the table and the excretory organs

Animals	Excretory organs
Earthworm
.....	Malpighian tubules
Frog



[Watch Video Solution](#)

71. Identify the animals from the hints given below. Invertebrate, Burrowing in moist soil, Nephridia, Genital pore.





[Watch Video Solution](#)

72. Identify the animals from the hints given below. Chordata, Amphibian, Kidney, Cloaca



[Watch Video Solution](#)

73. Identify the animals from the hints given below. Invertebrate, Insecta, Malpighian tubules, gonapophysis,



[Watch Video Solution](#)

74. Identify the statements as True or False:

First segment of earthworm is Prostomium.



Watch Video Solution

75. Identify the statements as True or False:

Peristomium contain mouth.



Watch Video Solution

76. Identify the statements as True or False:

Clitellum is on segments 14-16.



Watch Video Solution

77. Identify the statements as True or False:

Earthworm has only a single female genital aperture



Watch Video Solution

78. Earthworm feeds on humus, which contain large amount of humic acid. How does the earthworm neutralises the humic acid?



Watch Video Solution

79. Earthworm feeds on humus, which contain large amount of humic acid. How does the earthworm neutralises the humic acid?



Watch Video Solution

80. There are some physiological similarities between typhlosole and villi. Substantiate your answer.



Watch Video Solution

81. Mention the function of the following :

a) Blood glands of 'Pheretima'

b) Hepatic caeca of 'Periplaneta americana'.



Watch Video Solution

82. Earthworm is a hermaphrodite animal.

Where are its sex organs situated?



Watch Video Solution

83. Earthworms are known as 'Friends of farmers'. Give reason.



Watch Video Solution

84. Write the missing word in 4th place :

Dorsally - Tergites, Ventrally -



[Watch Video Solution](#)

85. Find the relationship between given words and suggest the suitable word for the fourth place.

a) Annelida : Nephridia ::

Arthropoda :

b) Osteichthyes : Cycloid scales ::

Chondrichthyes :



[Watch Video Solution](#)

86. You are given two cockroaches and the teacher asked to display the mouth parts of male cockroach. How will you identify the male cockroach?



Watch Video Solution

87. While dissecting a cockroach to display its digestive system, a student observed certain thick white tubules. Teacher explained it as part of respiratory system . Name the tubules.



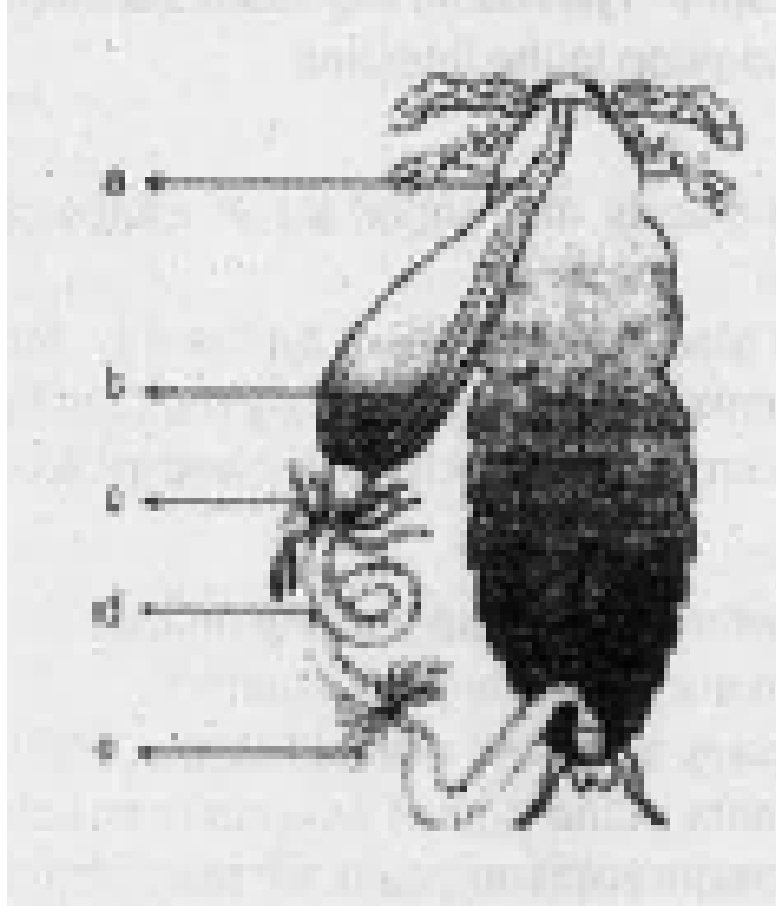
Watch Video Solution

88. While dissecting a cockroach to display its digestive system, a student observed certain thick white tubules. Teacher explained it as part of respiratory system . Name the tubules.



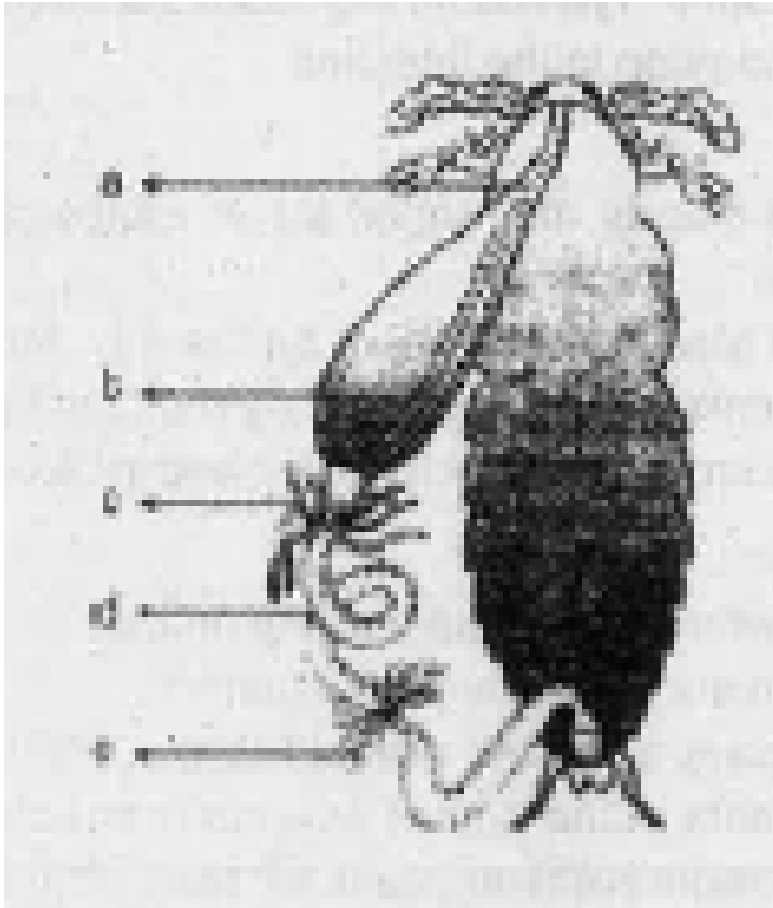
Watch Video Solution

89. Identify the diagram given below. Identify parts from a to e.



Watch Video Solution

90. Identify the diagram given below. Identify parts from a to e.



Watch Video Solution

91. Circulating fluid of cockroach is colourless.

Name the circulating fluid.



Watch Video Solution

92. Cockroach is uricotelic animal. Give reason.



Watch Video Solution

93. Name the four structure helps in excretion in cockroaches.



Watch Video Solution

94. If the head of cockroach is cut off, it will still alive for as long as one week. Give reason



Watch Video Solution

95. Name the sensory organs of cockroaches



Watch Video Solution

96. Compound eyes are more effective than vertebrate eye. Give reason



Watch Video Solution

97. Frog show sexual dimorphism. Write the morphological difference present only in male frog



Watch Video Solution

98. Prepare a flow chart showing the flow of food in the alimentary canal of frog. Compare it with alimentary canal of cockroach.



Watch Video Solution

99. Cloaca is a common opening of 3 tubes or tracts. Name the tracts which opens to cloaca.



Watch Video Solution

100. Cloaca is a common opening of 3 tubes or tracts. Name the tracts which opens to cloaca.



Watch Video Solution

101. Name the portal systems found in frog
Between liver and intestine,



Watch Video Solution

102. Name the portal systems found in frog

Between kidney and lower parts of the body



Watch Video Solution

103. Frog is ureotelic animal How?



Watch Video Solution

104. Name the different parts of the excretory system of frog



[Watch Video Solution](#)

105. Answer in one word : Covering of eyes in frog



[Watch Video Solution](#)

106. Answer in one word : Number of cranial nerves in frog



[Watch Video Solution](#)

107. Answer in one word : Membranous covering of Heart of frog



Watch Video Solution

108. Answer in one word : Brain of frog is enclosed in a bony structure named.....



Watch Video Solution

109. Answer in one word : Larval stage of frog





[Watch Video Solution](#)

110. Frogs are beneficial for mankind. Justify.



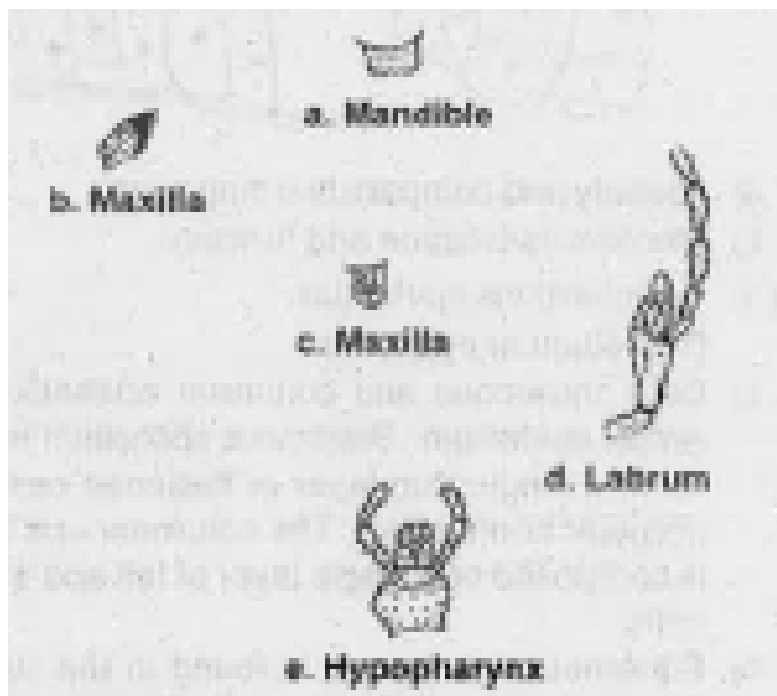
[Watch Video Solution](#)

111. Compare the circulatory system and blood of frog with that of an earthworm.



[Watch Video Solution](#)

112. The mounting of mouth parts of cockroach are given below. If there is any error, correct it.



[Watch Video Solution](#)

113. Answer in one word or one line : Give the common name of *Periplaneta Americana*



Watch Video Solution

114. Answer in one word or one line : How many spermathecae are found in earthworm?



Watch Video Solution

115. Answer in one word or one line : What is the position of a ovaries in cockroach?



[Watch Video Solution](#)

116. Answer in one word or one line : How many segments are present in the abdomen of cockroach.



[Watch Video Solution](#)

117. Answer in one word or one line : Where do you find Malpighian tubules?



[Watch Video Solution](#)

118. Answer in one word or one line :

Development through nymphal stage



Watch Video Solution

119. "All glands In our body do not have ducts of their own". Do you agree with this statement. Justify your answer using example.

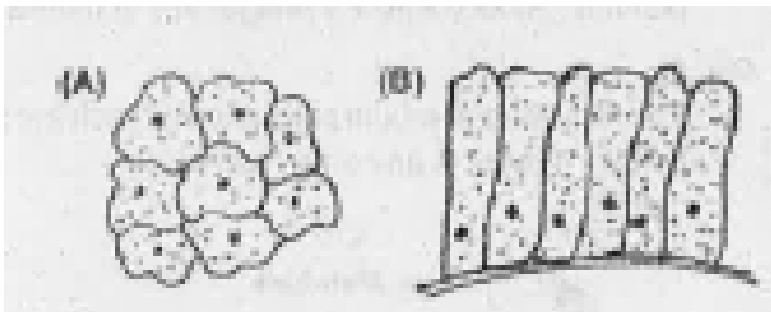


Watch Video Solution

120. Name three types of cell junctions in the epithellum.

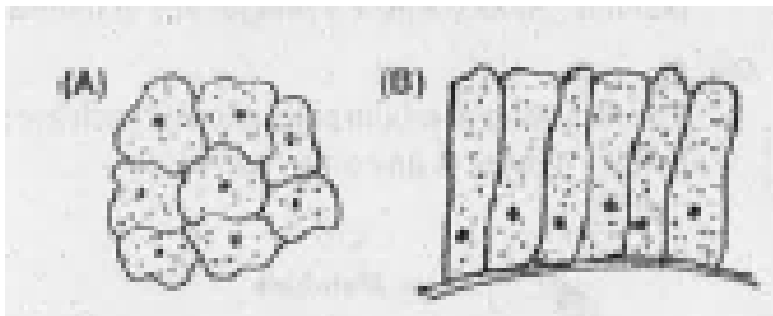
 [Watch Video Solution](#)

121. Observe the following diagram carefully. Identify and compare two diagrams with its functions.



 [Watch Video Solution](#)

122. Observe the following diagram carefully. Identify and compare two diagrams with its functions.



Watch Video Solution

123. Compare the excretory System in Cockroach and Frog



[Watch Video Solution](#)

124. Mention the mode of respiration In a frog while it is in water



[Watch Video Solution](#)

125. Mention the mode of respiration In a frog while it is On land



[Watch Video Solution](#)

126. Mention the mode of respiration In a frog while it is When under aestivation or hibernation.



Watch Video Solution

127. Arrange the columns A, B, and C in the table below and match them properly.

A	B	C
Squamous epithelium	Intercalated disc	Present between vertebrae
Cartilage	Dendrites	Helps in gas diffusion in lungs
Cardiac muscle	Chondrocytes	Impulse transmission
Neuron	Volkman's canal	Antibody formation
	Flattened cells	Helps in heart beat



[Watch Video Solution](#)

128. Give reasons : Simple epithelium functions as lining for the body cavities, ducts, tubes etc. where as compound epithelium is protective in function



[Watch Video Solution](#)

129. Give reasons : Cockroach does not possess respiratory pigment





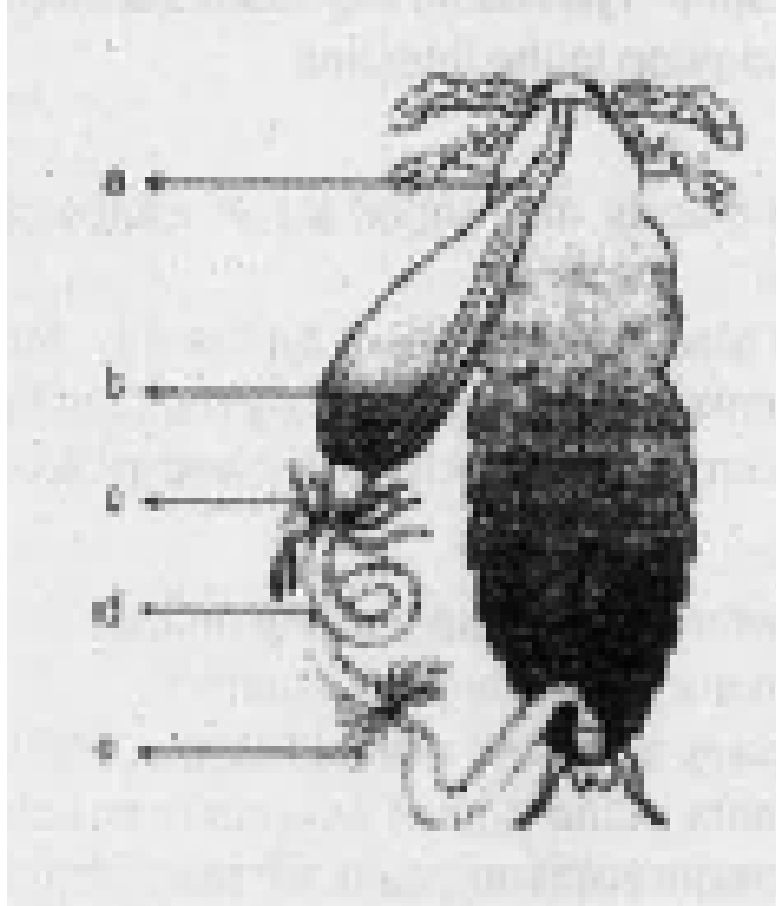
[Watch Video Solution](#)

130. Give reasons : Frog is ureotelic where as tadpole is ammonotelic.



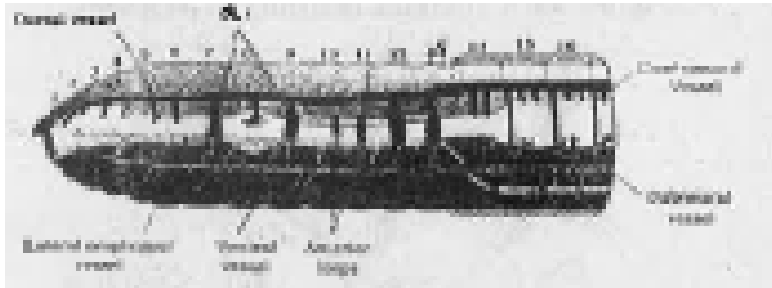
[Watch Video Solution](#)

131. Identify the diagram given below. Identify parts from a to e.



Watch Video Solution

132. Analyse the circulatory system of the animal. Label the part marked as a..

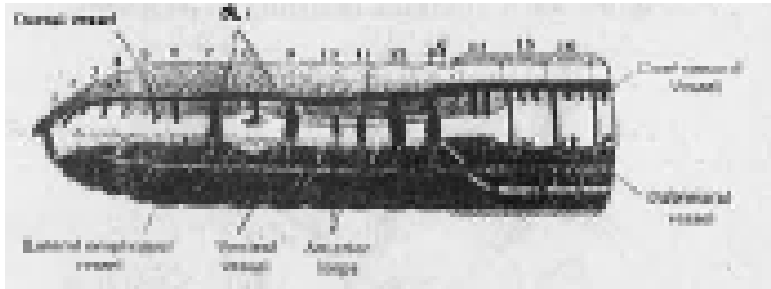


Watch Video Solution

133. Analyse the circulatory system of the animal. Compare it with the circulatory system of cock roach. Which one according to you is

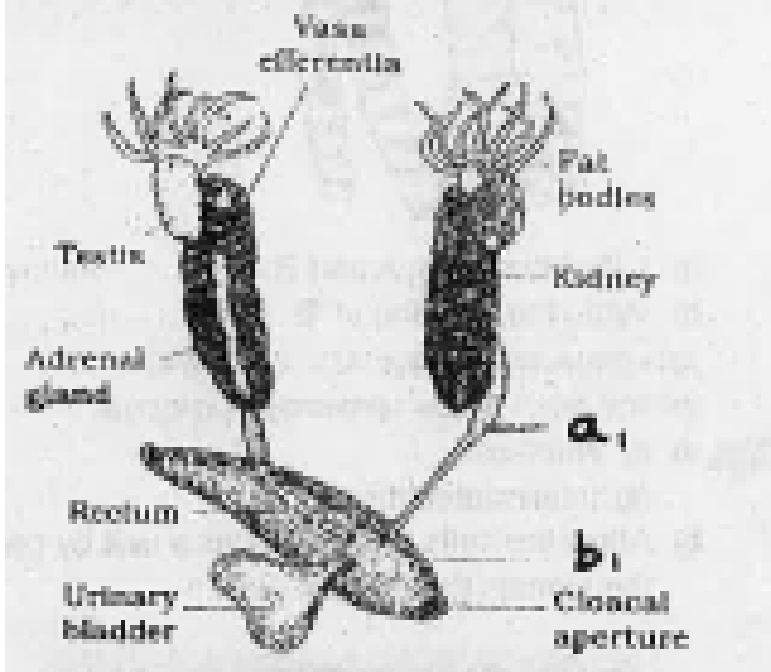
more

advanced?



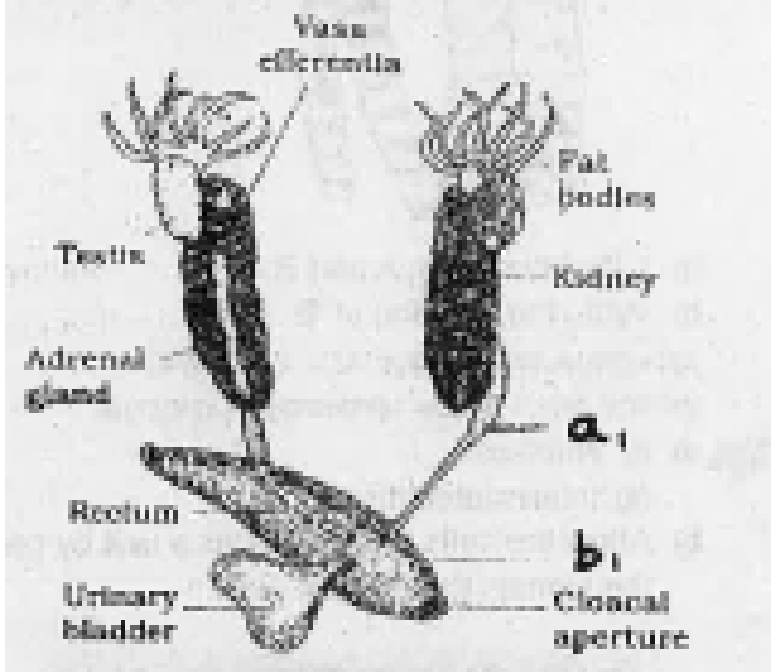
[Watch Video Solution](#)

134. Observe the diagram given below: Identify and write the peculiarity of the system.



[Watch Video Solution](#)

135. Observe the diagram given below: Label the parts marked as a, and b.



Watch Video Solution

136. Arrange the following words into two groups and give an appropriate heading to each group. Testes, oviduct, cloaca, Bidder's

canal, ovaries, urinogenital duct, vasa efferentia, cloaca.



[Watch Video Solution](#)

137. Observe the following figure. No need to redraw the diagram. Label the parts, A and B. Write the function of B.



[Watch Video Solution](#)

138. Identify the following tissues. Tissue that conducts impulses,



Watch Video Solution

139. Give one word for the following. Tissue specialised to store fats.



Watch Video Solution

140. Give one word for the following. Tissue attach skeletal muscles to bones.



Watch Video Solution

141. Give one word for the following. Tissue attach one bone to another.



Watch Video Solution

142. Name three types of cell junctions in the epithellum.



Watch Video Solution

143. Name three types of cell junctions in the epithellum.



Watch Video Solution

144. Facts related to two types of tissues are given below. Arrange them in two columns by giving suitable headings. Mention the location of each tissue in the human body. A sheath of tough connective tissue, Striations absent, Bundled together in a parallel fashion, Fusiform shape, Involuntary in function, Striated appearance.



Watch Video Solution

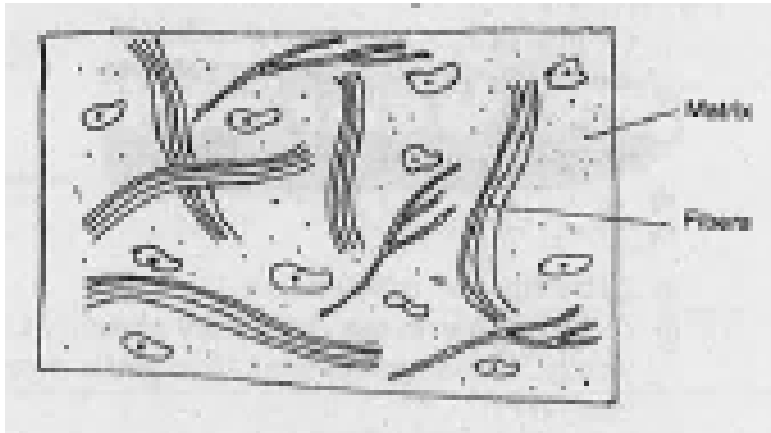
145. The structural and functional abilities of earth worms are helpful for it to become friends of farmers', Evaluate this statement and substantiate your answer.



Watch Video Solution

146. Observe the schematic diagram of a tissue. The fibers in this tissue help the tissue

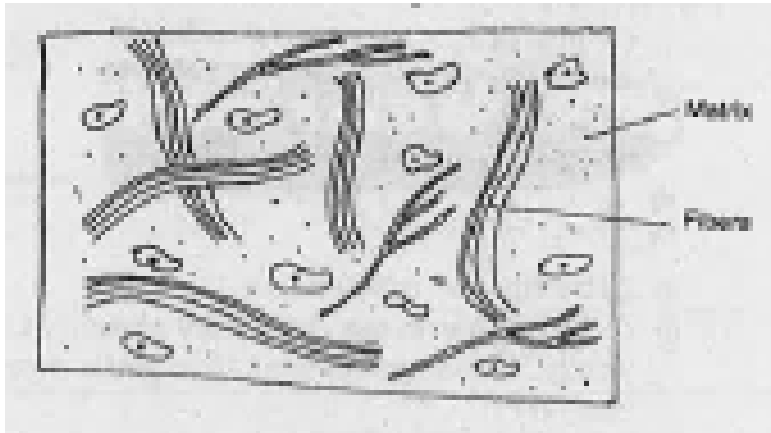
to perform its function. Substantiate.



[Watch Video Solution](#)

147. Observe the schematic diagram of a tissue. The fibers in this tissue help the tissue

to perform its function. Substantiate.



[Watch Video Solution](#)

148. Arrange the following organs in the antero-posterior order of the earthworm body: Intestinal caeca, gizzard, blood glands, testes, ovary, clitellum



[Watch Video Solution](#)

149. Vermicomposting is an advanced strategy in agriculture. What capabilities of the earthworm are utilized in this strategy?



[Watch Video Solution](#)

150. Features of a particular tissue visible through a microscopic observation is presented here: Cells are closely arranged. Intercellular matrix absent. Cells are

supported by basement membrane. Identify the animal tissue.



[Watch Video Solution](#)

151. Features of a particular tissue visible through a microscopic observation is presented here: Cells are closely arranged. Intercellular matrix absent. Cells are supported by basement membrane. Classify this tissue based on the number of cell layers.



[Watch Video Solution](#)

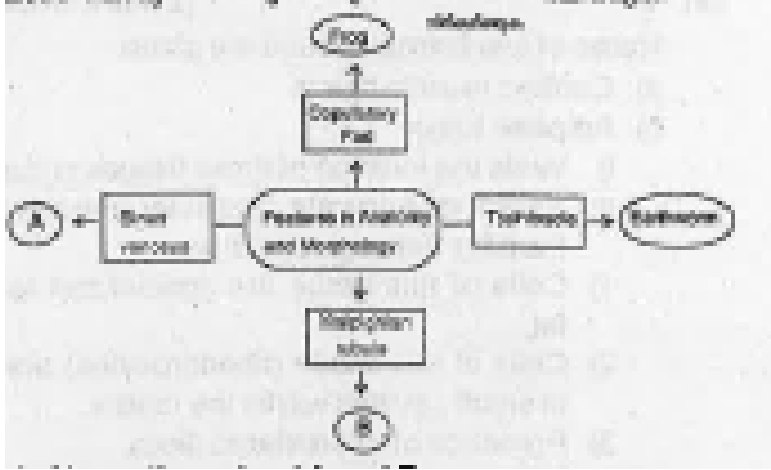
152. Features of a particular tissue visible through a microscopic observation is presented here: Cells are closely arranged. Intercellular matrix absent. Cells are supported by basement membrane. Mention their functions.



Watch Video Solution

153. Observe the diagrammatic representation.

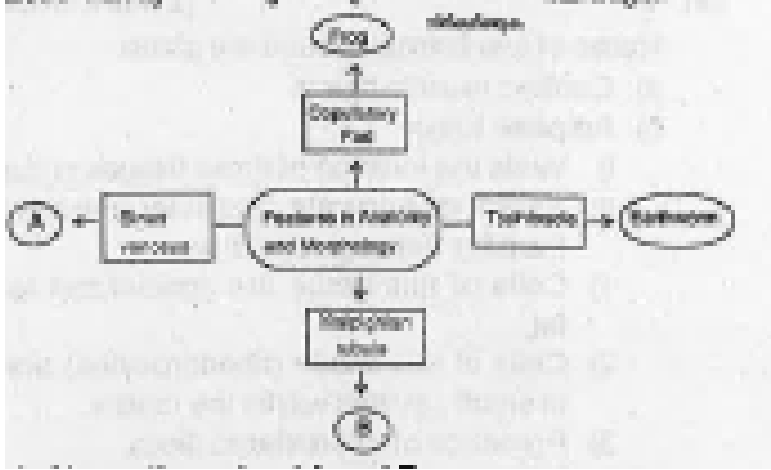
Name the animal A and B.



Watch Video Solution

154. Observe the diagrammatic representation.

Name the animal A and B.



[Watch Video Solution](#)

155. Where do you find the following structure in a human body? Collagen fibres



[Watch Video Solution](#)

156. Where do you find the following structure in human body : Axon



Watch Video Solution

157. Where do you find the following structure in a human body? Squamous epithelium



Watch Video Solution

158. Where do you find the following structure in a human body? Smooth muscles



Watch Video Solution

159. Fill in the blanks with suitable terms according to the indicators shown below :

Indicators : a and b- food habit / c and d-

Excretory organ, (a) Cockroach: (b)

Earthworm:..... (c) Cockroach:

(d)Earthworm.....





[Watch Video Solution](#)

160. Mention the function of the following :

a) Blood glands of 'Pheretima'

b) Hepatic caeca of 'Periplaneta americana'.



[Watch Video Solution](#)

161. Mention the function of the following :

a) Blood glands of 'Pheretima'

b) Hepatic caeca of 'Periplaneta americana'.



[Watch Video Solution](#)

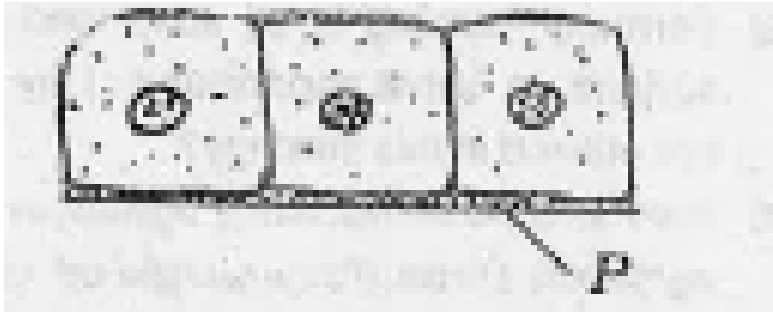
162. If the head of cockroach is cut off, it will still alive for as long as one week. Give reason



Watch Video Solution

163. The diagram given below is a simple epithelium. Name the part marked as "P" in the figure. Write one function of simple

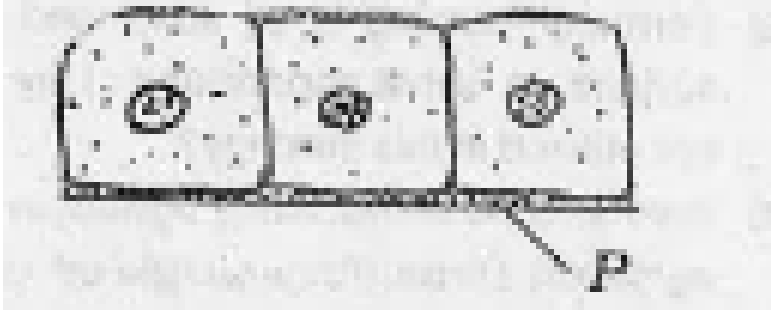
epithelium.



Watch Video Solution

164. The diagram given below is a simple epithelium. Name the part marked as "P" in the figure. Write one function of simple

epithelium.



[Watch Video Solution](#)

165. The male and female cockroaches can be identified by the difference in their morphological features. Name this phenomenon



[Watch Video Solution](#)

166. The male and female cockroaches can be identified by the difference in their morphological features. Name this phenomenon



Watch Video Solution

167. Select the odd one out in the following series : Areolar tissue, Blood, Neuron, tendon



Watch Video Solution

168. Select the odd one out in the following series : Hypopharynx: Malpighian tubules, Maxillae, Labrum



Watch Video Solution

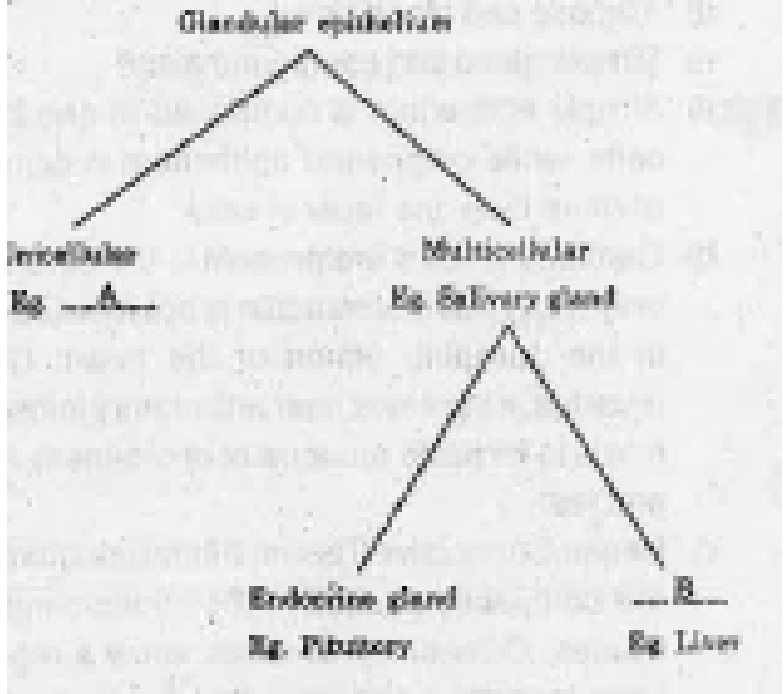
169. In a laboratory session your Biology teacher exhibited blood smears (slides) of cockroach and human beings under microscope. How will you distinguish them

based on the nature of plasma and blood cells?



[Watch Video Solution](#)

170. Observe the following chart and answer the given questions: Fill in the missing words



A and B.



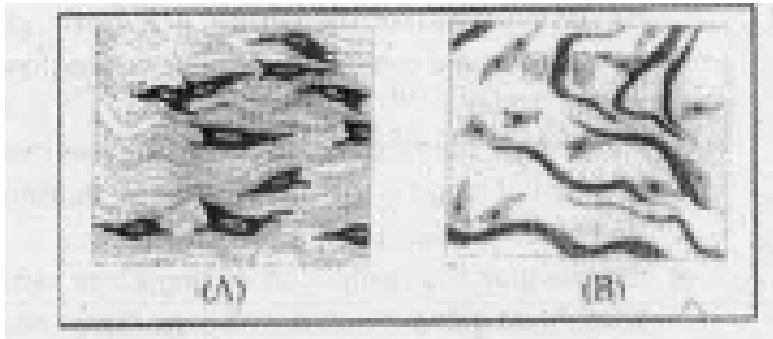
Watch Video Solution

171. Identify the given diagrams of connective tissues A and B . Write the location of tissue B

in

the

body.



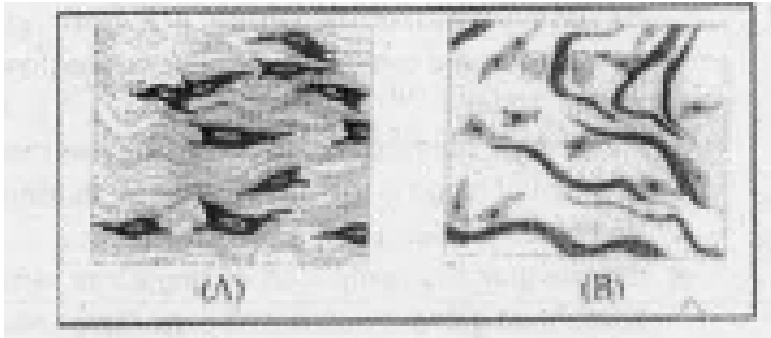
[Watch Video Solution](#)

172. Identify the given diagrams of connective tissues A and B . Write the location of tissue B

in

the

body.



[Watch Video Solution](#)

173. Prepare two correctly matched pairs from the given terms. Ommatidia Hepatic caecae Genital pouch Sense organ Excretory organ Digestive gland Upper lip



[Watch Video Solution](#)

174. In cockroach spiracles are present in.....

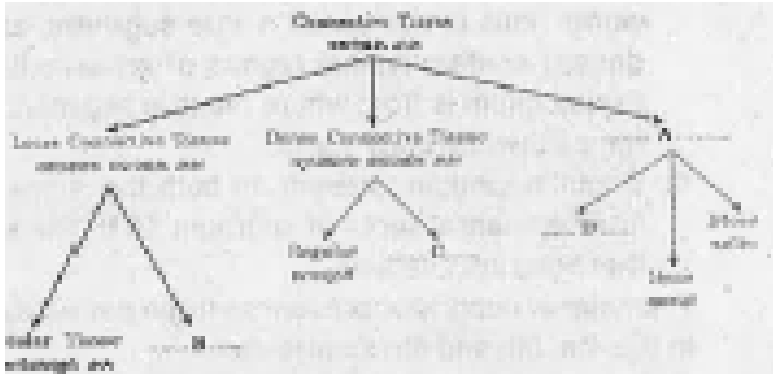
- A. Alimentary canal
- B. Tracheal System
- C. Malpighian tubules
- D. Reproductive system

Answer: B



Watch Video Solution

175. Complete the given branching diagram based on connective tissue.



 [Watch Video Solution](#)

176. Answer in one word or one line : Give the common name of *Periplaneta Americana*

 [Watch Video Solution](#)

177. Answer in one word or one line : How many spermathecae are found in earthworm?



Watch Video Solution

178. Answer in one word or one line : What is the position of a ovaries in cockroach?



Watch Video Solution

179. Answer in one word or one line : How many segments are present in the abdomen of cockroach.



Watch Video Solution

180. Answer in one word or one line : Where do you find Malpighian tubules?



Watch Video Solution

181. Give an account on Nephridia of earthworm



Watch Video Solution

182. Give an account on Nephridia of earthworm



Watch Video Solution

183. Distinguish between the following:

Prostomium and peristomium



Watch Video Solution

184. Distinguish between the following: Septal

nephridium and pharyngeal nephridium



Watch Video Solution

185. Write the cellular components of blood.



[Watch Video Solution](#)

186. Where do you find the following structure in human body : Chondrocytes



[Watch Video Solution](#)

187. Give reasons : Simple epithelium functions as lining for the body cavities, ducts, tubes etc. where as compound epithelium is protective in function





[Watch Video Solution](#)

188. Distinguish between Cardiac muscle and striated muscle



[Watch Video Solution](#)

189. Distinguish between Dense regular and dense irregular connective tissues



[Watch Video Solution](#)

190. Distinguish between Adipose and blood tissue



Watch Video Solution

191. Distinguish between Simple gland and compound gland



Watch Video Solution

192. Select the odd one out in the following series : Areolar tissue, Blood, Neuron, tendon



[Watch Video Solution](#)

193. Mark the odd one in each series: RBC, WBC, platelets, cartilage



[Watch Video Solution](#)

194. Mark the odd one in each series: Exocrine, endocrine, salivary gland, ligament



[Watch Video Solution](#)

195. Mark the odd one in each series: Maxilla, mandible, labrum, antennae



Watch Video Solution

196. Mark the odd one in each series:
Protonema, mesothorax, metathorax, coxa



Watch Video Solution

197. Carotene pigment is found in the cells of

A. dermis

B. epidermis

C. adipose cell

D. Both (b) and (c)

Answer: D



Watch Video Solution

198. The lining of intestine and kidneys in human is

A. keratinised

B. brush bordered

C. ciliated

D. None of these

Answer: B



Watch Video Solution

199. The type of cell junction, which facilitates cell to cell communication is

- A. tight junction
- B. adhering junction
- C. gap junction
- D. desmosomes

Answer: C



Watch Video Solution

200. Keratinised dead layer of skin is made up of

A. stratified squamous

B. simple cuboidal

C. simple columnar

D. stratified columnar

Answer: A



Watch Video Solution

201. Endothelium of blood vessels is made up of

- A. simple cuboidal epithelium
- B. simple squamous epithelium
- C. simple columnar epithelium
- D. simple non-ciliated columnar

Answer: B



Watch Video Solution

202. In which one of the following preparations are you likely to come across cell junctions most frequently?

A. Ciliated epithelium

B. Thrombocyte

C. Tendon

D. Hyaline cartilage

Answer: A



Watch Video Solution

203. Bowman's glands are located in the

A. proximal end of uriniferous tubules

B. anterior pituitary

C. female reproductive system of cockroach

D. olfactory epithelium of our nose

Answer: D



Watch Video Solution

204. Compound squamous epithellum is found

in

A. stomach

B. intestine

C. trachea

D. pharynx

Answer: D



Watch Video Solution

205. Find out the wrongly matched pair.

A. Squamous epithelium-Skin of frog

B. Columnar epithelium -Peritoneum of
body cavity

C. Ciliated epithelium-Bronchioles

D. Stratified squamous-Oesophagus
epithelium

Answer: B



Watch Video Solution

206. The type of tissue lining the nasal passage, bronchioles and fallopian tubes is

A. columnar ciliated epithelium

B. cuboidal epithelium

C. neurosensory epithelium

D. germinal epithelium

Answer: A



Watch Video Solution

207. The nasal chamber of rabbit has three thin twisted bony plates called conchae. They are lined by

- A. striated cuboidal epithelium
- B. simple cuboidal epithelium
- C. simple squamous epithelium
- D. simple ciliated columnar epithelium

Answer: D



Watch Video Solution

208. The cavities of alveoli of lungs are lined by

A. cuboidal epithelium

B. columnar epithelium

C. stratified cuboidal epithelium

D. squamous epithelium

Answer: D



Watch Video Solution

209. The type of tissue lining the nasal passage, bronchioles and fallopian tubes is

A. squamous epithelium

B. columnar epithelium

C. ciliated epithelium

D. cubical epithelium

Answer: C



Watch Video Solution

210. Agranulocytes are

- A. lymphocytes and monocytes
- B. eosinophils and basophils
- C. lymphocytes and eosinophils
- D. basophils and monocytes

Answer: A



Watch Video Solution

211. _____ acts as a shock absorber to cushion when tibia and femur came together.

A. Ligament

B. Cartilage

C. Tendon

D. Disc

Answer: B



Watch Video Solution

212. Erythropoiesis starts in

A. kidney

B. liver

C. spleen

D. red bone marrow

Answer: B



Watch Video Solution

213. Largest single mass of lymphatic tissue in the body is

A. lung

B. spleen

C. liver

D. kidney

Answer: B



Watch Video Solution

214. Hypochromic microcytic anaemia and leukopenia are caused by the deficiency of respectively.

- A. pyridoxine and riboflavin
- B. pyridoxine and folacin
- C. biotin and folacin
- D. biotin and cyanocobalamin

Answer: B



Watch Video Solution

