



BIOLOGY

BOOKS - BAL BHARTI

CELL STRUCTURE AND ORGANIZATION

Find Out

1. How do a combination of lenses helps in higher magnification?



Watch Video Solution

2. When do we use plane and concave mirror and diaphragm?



[Watch Video Solution](#)

3. What is the difference between magnification and resolution?



[Watch Video Solution](#)

4. Why do basal body of bacterial flagella considered as smallest motor in the world?



[Watch Video Solution](#)

Use Your Brain Power

1. Why mitochondria is called as power house of cell chamber



[Watch Video Solution](#)

2. Are mitochondria present in all eukaryotic cells?



Watch Video Solution

3. What is difference between us?

Prokaryotic cell and eukaryotic cell.



Watch Video Solution

Exercise

1. Growth of cell wall during cell elongation take place by.

- A. Apposition
- B. Intussusception
- C. Both a & b
- D. Super position

Answer:



Watch Video Solution

2. Cell membrane is composed of..... .

A. Proteins and cellulose

B. Proteins and Phospholipid

C. Proteins and carbohydrates

D. Proteins, Phospholipid and some
carbohydrates

Answer:



Watch Video Solution

3. Plasma membrane is fluid structure due to presence of

A. Carbohydrates

B. Lipid

C. Glycoprotein

D. Polysaccharide

Answer:



Watch Video Solution

4. Cell wall is present in

A. Plant cell

B. Prokaryotic cell

C. Algal cell

D. All of the above

Answer:



Watch Video Solution

5. Plasma membrane is made up of

A. Selectively permeable

B. Permeable

C. Impermeable

D. Semipermeable

Answer:



Watch Video Solution

6. Mitochondria DNA is

A. Naked

B. Circular

C. Double stranded

D. All of the above

Answer:



Watch Video Solution

7. Lysosomes are not helpful in

A. Osteogenesis

B. Cellular digestion

C. Metamorphosis

D. Lipogenesis

Answer:



Watch Video Solution

8. Which of the following set of organelles contain DNA

A. Mitochondria, Peroxysome

B. Plasma membrane, ribosome

C. Mitochondria, chloroplast

D. Chloroplast, dictyosome

Answer:



Watch Video Solution

9. Golgi body is absent in

A. Prokaryotes

B. Mature mammalian RBC

C. Alkaryotes

D. All of the above

Answer:



Watch Video Solution

10. Plants have no circulatory system? Then how cells manage intercellular transport?



Watch Video Solution

11. Is nucleolus covered by membrane?



Watch Video Solution

12. Fluid mosaic model proposed by Singer and Nicolson replaced Sandwich model proposed

by Danielli and Davson? Why?



Watch Video Solution

13. The RBC surface normally shows glycoprotein molecules. When determining blood group do they play any role?



Watch Video Solution

14. How cytoplasm differs from nucleoplasm in chemical composition?



[Watch Video Solution](#)

15. Distinguish between smooth and rough endoplasmic reticulum.



[Watch Video Solution](#)

16. Mitochondria are power house of cell.
Given reason.



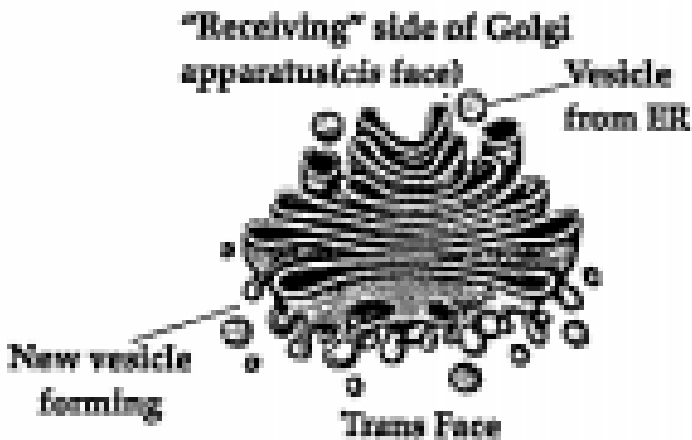
[Watch Video Solution](#)

17. What are types of plastids?



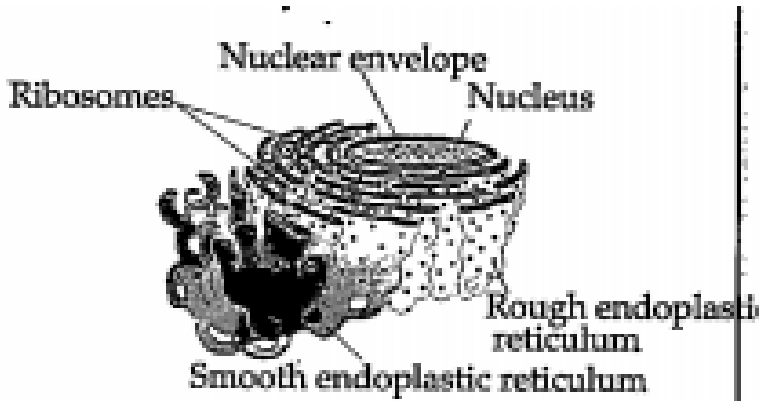
Watch Video Solution

18. Label the diagrams and write down the details of concept in your word.



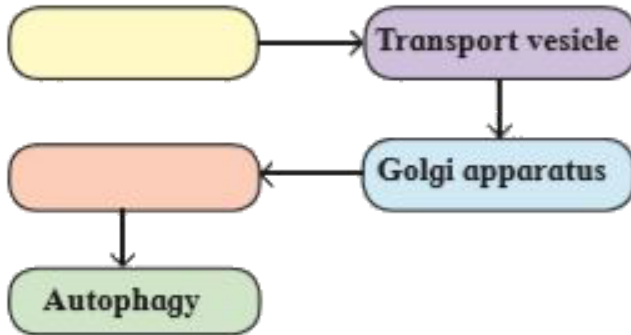
Watch Video Solution

19. Label the diagrams and write down the details of concept in your word.



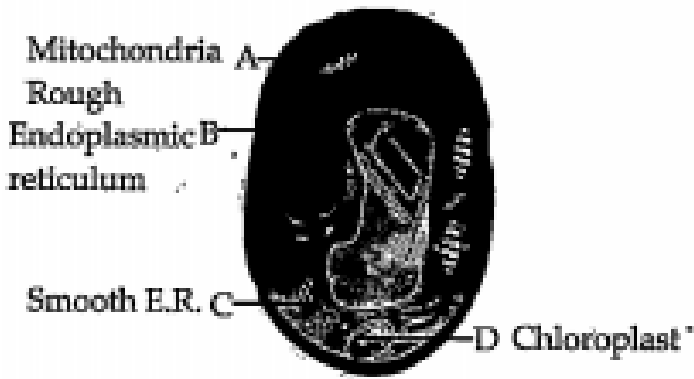
[Watch Video Solution](#)

20. Complete the flow chart



[Watch Video Solution](#)

21. Label the A, B, C, and D in above diagram and write the functions of organells A and B.



[Watch Video Solution](#)

22. Identify each cell structures or organelle from its description below:

Manufactures ribosome.



[Watch Video Solution](#)

23. Identify each cell structures or organelle from its description below:

Carrys out photosynthesis.



Watch Video Solution

24. Identify each cell structures or organelle from its description below:

Can bud of vesicle from which form Golgi apparatus.



Watch Video Solution

25. Identify each cell structures or organelle from its description below:

Manufacture ATP in animal and plant cells.



Watch Video Solution

26. Identify each cell structures or organelle from its description below:

Selective permeable.



Watch Video Solution

27. Onion cells have no chloroplast. How can we tell they are plants?



Watch Video Solution