



BIOLOGY

BOOKS - BAL BHARTI

KINGDOM ANIMALIA

Can You Recall

1. What is the basis of classification?



Watch Video Solution

2. Who proposed five kingdom system of classification.



[Watch Video Solution](#)

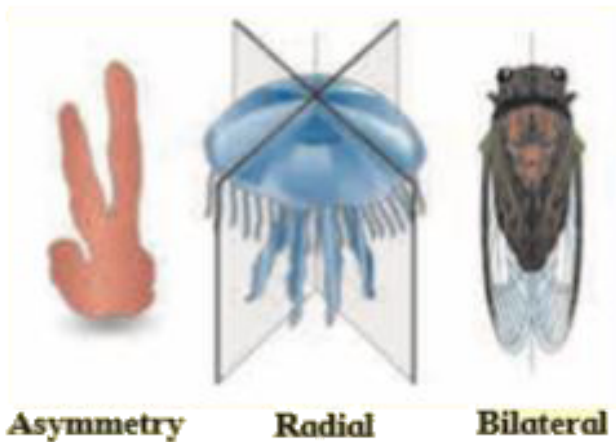
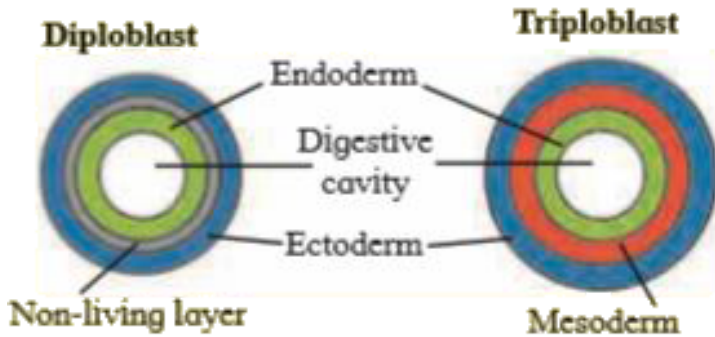
3. What is the need and importance of classification?



[Watch Video Solution](#)

Observe And Discuss

1. Observe the diagram given below and discuss the criterias of classification.



Types of Symmetry



Watch Video Solution

Find Out

1. Information about coral reef and sea fan.



[Watch Video Solution](#)

2. What are the merits and demerits of Hermaphroditism?



[Watch Video Solution](#)

3. What are leeches used in Ayurveda?



[Watch Video Solution](#)

4. What is the role of earthworms in agriculture? What is vermicompost?



[Watch Video Solution](#)

5. Why is phylum arthropoda considered as most successful phylum?



Watch Video Solution

6. What do we know by parthenogenesis?



Watch Video Solution

7. What do we means by living fossil?



Watch Video Solution

8. How the bees produce honey?



[Watch Video Solution](#)

9. What will happen if arthropoda do not moult?



[Watch Video Solution](#)

10. Balanoglossus is a connecting link between Non-chordates and Chordates.



[Watch Video Solution](#)

1. State parasitic adaptations in liverfluke and Ascaris



[Watch Video Solution](#)

2. Give examples of free living platyhelminth.



[Watch Video Solution](#)

3. Explain the term metameric segmentation.



Watch Video Solution

4. Give the characteristics of Arthropoda.



Watch Video Solution

5. Enlist harmful Arthropods.



Watch Video Solution

6. Why do molluscs have shells?



[Watch Video Solution](#)

7. Give salient features of phylum Echinodermata.



[Watch Video Solution](#)

8. Hemichordata is connecting link between non-chordata and chordata. Give reasons.



[Watch Video Solution](#)

9. Herdmania is called as chordate. Explain.



[Watch Video Solution](#)

10. Given characteristics of petromyzon.
Comment on its mode of nutrition.



[Watch Video Solution](#)

11. Differentiate between Chondrichthyes and Osteichthyes on the basis of scales and caudal fin.



Watch Video Solution

12. What is the lateral line system?



Watch Video Solution

13. Why Piscean heart is called venous heart?



[Watch Video Solution](#)

14. Amphibians do not have exoskeleton. Give reason.



[Watch Video Solution](#)

15. Why are amphibians and reptiles called poikilothermic?



[Watch Video Solution](#)

16. Give adaptations in aves for flying.



Watch Video Solution

17. Aves and mammals are homotherms. Give reasons.



Watch Video Solution

18. How mammals differ from other groups of animals?





Watch Video Solution

Exercise Choose The Correct Option

1. Which of the following belongs to a minor phylum.

A. Comb jelly

B. Jelly fish

C. Herdmania

D. Salpa

Answer:



Watch Video Solution

2. Select the animal having venous heart.

A. Crocodile

B. Salamander

C. Rohu

D. Toad

Answer:



[Watch Video Solution](#)

3. In ascaris,.....

- A. mesoglea is present
- B. endoderm is a discontinuous layer
- C. mesoderm is present in patches
- D. body cavity is absent

Answer:



[Watch Video Solution](#)

4. Which of the following is incorrect in case of birds?

- A. Presence of teeth
- B. Presence of scales
- C. Nucleated RBCs
- D. Hollow bones

Answer:



Watch Video Solution

5. Chitinous exoskeleton is a characteristic of.....

A. Dentalium

B. Antedon

C. Millipede

D. Sea urchin

Answer:



Watch Video Solution

Exercise Answer The Following Questions

1. Reptiles are known for having three chambered heart. Which animal shows a near four chambered condition in reptiles



[Watch Video Solution](#)

2. The circulatory system has evolved from open to closed type in Animal Kingdom. Which phylum can be called first to represents closed circulation?



[Watch Video Solution](#)

3. Pinna is part of external ear and it is found in mammals. Do aves and reptiles show external ear in any form?



[Watch Video Solution](#)

4. Fish and frog can respire in water. Can they respire through their skin? If yes, why do they have gills?



[Watch Video Solution](#)

5. Birds need to keep their body light to help in flying. Hence, they show presence of some organs only on one side. How their skeleton helps in reducing their weight?



[Watch Video Solution](#)

6. Cnidarians and Ctenophores are both diploblastic. Which other character do they

have in common, which is not found in other phyla?



Watch Video Solution

7. Crab and Snail both have a protective covering. Is it made up of the same material?



Watch Video Solution

8. Sponge and sea star show calcareous protective material. Do they belong to the

same Phylum?



Watch Video Solution

9. Fish and snake both have scales. How do these scales differ from each other?



Watch Video Solution

10. Lower Phyla like Arthropoda and Cnidarians show metamorphosis. It is also found in any class of Phylum Chordata?



[Watch Video Solution](#)

Exercise

1. Draw neat labelled diagram.

Sycon



[Watch Video Solution](#)

2. Draw neat labelled diagram.

Aurelia



[Watch Video Solution](#)

3. Draw neat labelled diagram.

Amphioxus



[Watch Video Solution](#)

4. Draw neat labelled diagram.

Catla



[Watch Video Solution](#)

5. Draw neat labelled diagram.

Balanoglossus



[Watch Video Solution](#)

6. Draw neat labelled diagram.

Scoliodon



[Watch Video Solution](#)

7. Match the following

Phylum

- i. Annelida
- ii. Mollusca
- iii. Ctenophora
- iv. Porifera
- v. Echinodermata

Characters

- a. Tube feet
- b. Ostia
- c. Radula
- d. Parapodia
- e. Comb plates



[Watch Video Solution](#)

8. Identify the animals given in pictures and write features of its phylum / class



Watch Video Solution

9. Identify the animals given in pictures and write features of its phylum / class



Watch Video Solution

10. Identify the animals given in pictures and write features of its phylum/class. Nautilus



Watch Video Solution

11. Observe and identify body symmetry of given animals



Watch Video Solution