



BIOLOGY

BOOKS - NIKITA PUBLICATION

CELL STRUCTURE AND ORGANIZATION

Exercise

1. The living cell first of all observed by

A. Leeuwenhoek

B. Robert Hooke

C. Schielden

D. Schwann

Answer:



Watch Video Solution

2. Cell theory state that

A. All cells are living

B. All cells has nucleus

C. Cells reproduce by mitosis and meiosis

D. Cells are fundamental structural unit of
life

Answer:



Watch Video Solution

3. Exceptions to cell theory is

A. Viruses

B. Bacteria

C. Cynobacteria

D. All of these

Answer:



Watch Video Solution

4. The term protoplasm in plant cell was used
by

A. Mohl

B. Leeuwenhoek

C. Purkinje

D. Schwann

Answer:



Watch Video Solution

5. In animal cell totipotency is found in

A. Stem cells

B. Nerve cells

C. Kidney cells

D. Heart cells

Answer:



Watch Video Solution

6. Smaller cells are very active as they have

A. Higher nucleocytoplasmic ration

B. Higher surface area per unit volume

C. Both a and b

D. None of these

Answer:



Watch Video Solution

7. Bacilli form of bacteria are

- A. Spherical
- B. Comma shaped
- C. Rod Shaped
- D. Twisted

Answer:



[Watch Video Solution](#)

8. Glycocalyx is a covering present

- A. Inside the cell wall
- B. Outside the cell wall
- C. Out side the plasma membrane
- D. Outside the cell envelope

Answer:



[Watch Video Solution](#)

9. In gram -ve bacteria, the stain is lost when treated with

A. Crystal violet day

B. Glycerinc

C. Alcohol

D. Iodine solution

Answer:



Watch Video Solution

10. Which of the following is prokaryote

A. Protista

B. Fungi

C. Bacteria

D. Algae

Answer:



Watch Video Solution

11. The invaginations of plasma membrane which are believed to involve in DNA replication is

- A. Mesosome
- B. Chromatophores
- C. Ribosomes
- D. Nucleoid

Answer:



Watch Video Solution

12. In prokaryotes, chromatophores are

A. Special granules responsible for colouration of cell

B. Inclusive bodies for metabolic activities

C. Photosynthetic pigmented bodies

D. The bodies which contain respiratory enzymes

Answer:



Watch Video Solution

13. Chromatophores contain which type of pigments

A. Bacteriopheophytin

B. Bacteriochlorophylls

C. Carotenoids

D. All of these

Answer:



Watch Video Solution

14. The type of ribosomes found in prokaryotic cell are

A. 60 s

B. 70 s

C. 80 s

D. 90 s

Answer:



Watch Video Solution

15. The extra chromosomal DNA present in bacterial cells called as

- A. Plastid
- B. Plasmid
- C. Nucleoid
- D. Extra nuclear DNA

Answer:



Watch Video Solution

16. In genetic engineering plasmids are used as

A. Passenger DNA

B. Amplifier DNA

C. Vector DNA

D. Splicing DNA

Answer:



Watch Video Solution

17. The word prokaryote means a cell

- A. With one nucleus
- B. With diffused nucleus
- C. With many nuclei
- D. Without chloroplast

Answer:



Watch Video Solution

18. What is the function of receptor molecules present on bacterial cell wall.

- A. To respond to chemical in their surrounding
- B. To help in movement
- C. To help in locomotion
- D. To help in osmosis

Answer:



Watch Video Solution

19. Cell organelle present in both prokaryotes and eukaryotes is

A. Lysosome

B. Chloroplast

C. Centriole

D. Ribosome

Answer:



Watch Video Solution

20. In prokaryotes, respiratory enzymes are located on

- A. Mitochondria
- B. Ribosome
- C. Lysosome
- D. Plasma membrane

Answer:



Watch Video Solution

21. On the basis of intracellular organization what are two different categories of living organisms.

A. Unicellular and multi cellular

B. Plants and animals

C. Prokaryotes and eukaryotes

D. Virus and bacteria

Answer:



Watch Video Solution

22. Which of the following structures is not found in a blue green cell

A. Plasma membrane

B. Cell wall

C. Nuclear envelope

D. Ribosomes

Answer:



Watch Video Solution

23. The strength and rigidity of a cell wall is due to the substance.

A. Suberin

B. Cellulose

C. Lignin

D. Pectin

Answer:



Watch Video Solution

24. Outermost layer of cell wall

- A. Primary wall
- B. Secondary wall
- C. Middle lamella
- D. Plasmalemma

Answer:



Watch Video Solution

25. Cell wall shows

A. Complete permeability

B. Impermeability

C. Differential permeability

D. Semipermeability

Answer:



Watch Video Solution

26. Which of the following involve in cell wall formation

A. Nucleus

B. golgi complex

C. E.R.

D. Nucleolus

Answer:



Watch Video Solution

27. Cell wall was first observed under microscope by

A. Robert Brown

B. Robert Hooke

C. Schewann

D. Danielli and Davson

Answer:



Watch Video Solution

28. Plasma membrane is made up of

A. A protein layer between two lipid layers.

B. A lipid layer between two protein layers

C. A protein, a lipid and a cellulose layer

D. A lipid, a carbohydrate and a protein layer

Answer:



Watch Video Solution

29. The term protoplasm in animal cell was used by

A. Leeuwenhoek

B. Mohl

C. Purkinje

D. Huxley

Answer:



Watch Video Solution

30. The living matter present inbetween plasma membrane and nuclear membrane is

A. Nucleoplasm

B. Cytoplasm

C. Protoplasm

D. Ectoplasm

Answer:



Watch Video Solution

31. Extrinsic proteins in bilayer are

A. Peripheral

B. loosely arranged

C. Easily removed

D. All of these

Answer:



Watch Video Solution

32. The proteins which are larger and run across the entire thickness of phospholipids are called

A. Intergral

B. Intrinsic

C. Tunnel

D. None of these

Answer:



Watch Video Solution

33. Ingestion of material by plasma membrane
is done by

A. Pinocytosis

B. Phagocytosis

C. Endocytosis

D. Exocytosis

Answer:



Watch Video Solution

34. Selective permeable membrane allow passage of

A. Slutes only

B. Solvent only

C. Some solvent and all solutes

D. Some solutes and all solvent

Answer:



Watch Video Solution

35. In the cell membrane, integral proteins are

A. Partially attached to the surface of the membrane

B. Partially or totally buried in the membrane

C. Permanently attached to the outer surface of the membrane

D. Temporarily attached to the surface of the membrane

Answer:



Watch Video Solution

36. Which of the following is double membrane bounded cell organelle.

A. Ribosome

B. Mitochondria

C. Nucleolus

D. b and c

Answer:



Watch Video Solution

37. Infolds of inner membrane of mitochondria are called as

- A. Cristae
- B. F_1 particles
- C. Mesosomes
- D. Lamillae

Answer:



Watch Video Solution

38. Electron carrier system is present

- A. One outer membrane of mitochondrion
- B. Inner membrane of mitochondrion
- C. In the matrix of mitochondrion
- D. All of these

Answer:



Watch Video Solution

39. Mitochondria will be found in abundance in cells of tissue having

- A. Minimum activity
- B. Average activity
- C. Maximum activity
- D. No activity

Answer:



Watch Video Solution

40. Which of the following correctly matches an organelle with its function

A. Lysosome-Secretion

B. Nucleus-Photosynthesis

C. ribosome-Lipid synthesis

D. Mitochondria-Cellular respiration

Answer:



Watch Video Solution

41. Outer and inner membrane of mitochondria are

A. Structurally and functionally similar

B. Structurally different but functionally similar

C. Structurally similar but functionally different

D. Structurally and functionally dissimilar

Answer:





Watch Video Solution

42. Oxidative enzymes mostly occur in

- A. Lysosomes
- B. Golgi bodies
- C. Mitochondria
- D. Ribosomes

Answer:



Watch Video Solution

43. E.R.is absent in

A. Mammalian RBCs

B. Ova

C. Prokaryotic cells

D. All of these

Answer:



Watch Video Solution

44. The intracellular supporting frame work of the cell is

A. Cytoplasm

B. Golgi complex

C. E.R.

D. Lysosomes

Answer:



Watch Video Solution

45. The role of SER is

- A. Detoxification
- B. Synthesis of lipids
- C. Secretion of lipids
- D. All of these

Answer:



Watch Video Solution

46. E.R. arised from

A. E.R. it self

B. Nuclear membrane

C. Golgi system

D. Cell membrane

Answer:



Watch Video Solution

47. E.R. was discovered by

A. Golgi

B. Altmann

C. Porter

D. Robertson

Answer:



Watch Video Solution

48. Golgi apparatus is which type of cell organelle

A. Non membrane bounded

B. Memberance bounded

C. Single membrane bounded

D. Double membrane bounded

Answer:



Watch Video Solution

49. Acrosome of sperm is formed by

A. E.R.

B. Lysosome

C. Golgibody

D. nucleus

Answer:



Watch Video Solution

50. In plant cell Golgi complex is called as

A. Mesosomes

B. Oxysome

C. Sphaerosomes

D. Dictyosomes

Answer:



Watch Video Solution

51. Which of the following organelle is involved in the formation of cell plate or phragmoplast plants.

A. E.R.

B. nucleus

C. golgi apparatus

D. Lomasome

Answer:



Watch Video Solution

52. The organelle showing polarity is

A. Ribosome

B. Golgi bodies

C. Lysosomes

D. DNA

Answer:



Watch Video Solution

53. Who has made the first electron microscopic study of Golgi complex.

A. Dalton and Felix

B. Jacob and Monod

C. Bensley and Hoerr

D. Emerson and Blinks

Answer:



Watch Video Solution

54. Leucoplasts are found in

A. Roots

B. buds

C. Leaves

D. Flowers

Answer:



Watch Video Solution

55. The site of photosynthesis is

- A. Leucoplasts
- B. Chromoplasts
- C. Chloroplasts
- D. All of these

Answer:



Watch Video Solution

56. The cell organelles which are known to have extranuclear DNAs

- A. Lysosomes
- B. Chloroplasts
- C. E.R.
- D. Golgi complex

Answer:



57. Grana and stroma lamellae occur in

- A. Ribosome
- B. Mitochondria
- C. Golgi body
- D. Chloroplast

Answer:



58. The term chloroplast was coined by

A. Seifriz

B. Schimper

C. Park and Pon

D. Rhodin

Answer:



Watch Video Solution

59. Choose the wrong matches pair

A. Amyloplasts-Starch

B. Elaioplast-Oils and fats

C. Aleuroplasts-Proteins

D. Chromoplasts-Colourless

Answer:



Watch Video Solution

60. The term lysosome was derived from

- A. Latin word
- B. Greek word
- C. Romen word
- D. English workd

Answer:



Watch Video Solution

61. The term lysosome was coined by

A. Golgi

B. Nicholom

C. Dalton

D. Duve

Answer:



Watch Video Solution

62. Lysosome is

- A. Membranous body
- B. Single membrane body
- C. Duple membrane body
- D. Naked body

Answer:



Watch Video Solution

63. Which one of the following is called a suicidal bag

A. Sphaerosomes

B. Peroxisomes

C. Lysosomes

D. Ribosomes

Answer:



Watch Video Solution

64. Lysosome are originated from

- A. Plasma membrane
- B. Nuclear membrane
- C. Mitochondrial membrane
- D. Golgi apparatus

Answer:



Watch Video Solution

65. Which of the following cell organelle shows polymorphism.

A. Ribosomes

B. Polysomes

C. Lysosomes

D. Plastids

Answer:



Watch Video Solution

66. Which of the following organelle function as trigger of cell division

A. Sphaerosome

B. Lysosome

C. Lomasome

D. Glyoxysome

Answer:



Watch Video Solution

67. The lysosome which contain hydrolytic enzymes but not yet involved in digestive events are called

- A. Autophagosomes
- B. Residual bodies
- C. Secondary lysosomes
- D. Primary lysosomes

Answer:



Watch Video Solution

68. Which of the following helps in removal of carcinogens.

A. Sphaerosomes

B. Lysosomes

C. Peroxisomes

D. Glycoxysomes

Answer:



Watch Video Solution

69. Which of the following statements is incorrect with reference to lysosome

- A. They are filled with acid hydrolase and other enzymes
- B. They are monomorphic and uniform in structure and function
- C. They may be autophagic
- D. They can digest proteins, nucleic acids, lipids and polysaccharides.

Answer:



Watch Video Solution

70. Which lysosomes are scavenging in function

A. Primary

B. Secondary

C. Tertiary

D. Autophagosomes

Answer:



71. Sphaerosomes are

- A. Naked bodies
- B. Membrane bounded
- C. Single membrane bounded
- D. Double membrane bounded

Answer:



72. Sphaerosomes are rich in

A. Lipids

B. Proteins

C. Carbohvdrates

D. Glycoproteins

Answer:



Watch Video Solution

73. What is degraded by peroxisomes

- A. Carbon dioxide
- B. Hydrogen peroxide
- C. Lithium oxide
- D. Carbon monoxide

Answer:



Watch Video Solution

74. Glyoxysomes occur in

- A. Both plant and animals
- B. Plant cells only
- C. Animal cells only
- D. All type of cells

Answer:



Watch Video Solution

75. Glycolate metabolism occurs in

A. Glyoxysomes

B. Ribosomes

C. Peroxisomes

D. Lysosomes

Answer:



Watch Video Solution

76. Who discovered Ribosomes

A. Watson

B. Talvim

C. Cowdry

D. Palade

Answer:



Watch Video Solution

77. Non membranous cell organelles are

A. Mitochondria

B. ER

C. Ribosome

D. Ribosome and centriole

Answer:



Watch Video Solution

78. The type of ribosome present in eukaryotic cell is

A. 80 s

B. 70 s

C. 50 s

D. 30 s

Answer:



Watch Video Solution

79. Polyribosomes are found in

A. 70 s type of ribosome

B. 80 s type of ribosome

C. Both a and b

D. None of these

Answer:



Watch Video Solution

80. Smallest and abundant organelle in the cells are

A. Lysosomes

B. Ribosomes

C. Microsomes

D. Glyoxysomes

Answer:



Watch Video Solution

81. Choose the correct statement

A. Ribosomal subunits are united during protein synthesis

B. Ribosomal subunits always remain united

C. Ribosomal subunits are united in nucleus during r RNA synthesis

D. All are correct statements

Answer:



Watch Video Solution

82. The larger sub unit in 80 s ribosome is

A. 50 s

B. 10 s

C. 60 s

D. 40 s

Answer:



Watch Video Solution

83. Centrioles are

- A. Non membrane bodies
- B. Membranous bodies
- C. Single membranous bodies
- D. Double membranous bodies

Answer:



Watch Video Solution

84. Each centriole consist of

- A. A triplet of nine microtubules
- B. A tripled of three microtubules
- C. A triplet of six microtubules
- D. Nine microtubules

Answer:



Watch Video Solution

85. Centrioles helps in

- A. Spindle formation during cell division

B. Formation of Basal bodies and fallgella

C. Formation fo spindle pole

D. All of these

Answer:



Watch Video Solution

86. Basal bodies of cilia and flagella are derived from.

A. Plasma membrane

B. Genes

C. Centrioles

D. Lysosomes

Answer:



Watch Video Solution

87. A pair of centriole is called

A. centrosome

B. Diplosome

C. Peroxysome

D. Glyoxysome

Answer:



Watch Video Solution

88. An organelle that has no DNA but capable of duplication is

A. Centrosphere

B. nucleus

C. Centromere

D. Centriole

Answer:



Watch Video Solution

89. The filaments present in cilia and flagella are composed of

A. Microtubules

B. Mocrofilaments

C. Microfibrils

D. Microvilli

Answer:



Watch Video Solution

90. The arrangement of central and outer microtubules in the cilium is

A. $9 + 2$ pattern

B. $2 + 9$ pattern

C. 9 + 0 pattern

D. 0 + 9 pattern

Answer:



Watch Video Solution

91. Regarding microtubules, all of the following statements are true except

A. They help in determine cell shape

B. They are major components of microvilli

C. They are major components of centriole

D. They are major components of cytoskeleton

Answer:



Watch Video Solution

92. Permanent vacuoles are present in

A. Prokaryotic cells

B. Eukaryotic cells

C. Plant cells

D. Animal cells

Answer:



Watch Video Solution

93. The fluid present in vacuoles is called

A. Stroma

B. Matrix

C. Sap

D. Ground substance

Answer:



Watch Video Solution

94. Turgidity in plant cells maintain by

A. Wall pressure

B. turgor pressure

C. Vacuole

D. Osmotic pressure

Answer:



Watch Video Solution

95. In plant cell minerals are stored in

- A. Peroxisome
- B. Mitochondria
- C. Golgi body
- D. Vacuole

Answer:



[Watch Video Solution](#)

96. Which of the following is an inclusion

A. Mitochondrion

B. Lysosome

C. Golgi complex

D. Strach grain

Answer:



[Watch Video Solution](#)

97. Nucleus in eukaryotic cell was discovered by

A. Robert Hooke

B. Robert Brown

C. Waldeyer

D. Hofmeister

Answer:



Watch Video Solution

98. Structure of nucleolus can be seen clearly during

A. Interphase

B. Prophase

C. Metaphase

D. Telophase

Answer:



Watch Video Solution

99. Nucleus is which type of cell organelle

- A. Membrane bounded
- B. Naked
- C. Double membrane bounded
- D. Single membrane bounded

Answer:



Watch Video Solution

100. Nuclear pores were first of all observed by

A. Robert Brown

B. Callan and Tomlin

C. Palade

D. Benda

Answer:



Watch Video Solution

101. Nucleoplasm also called as

A. Karyolymph

B. Nuclear sap

C. Lymph

D. a and b

Answer:



Watch Video Solution

102. Nucleolus was first discovered by

A. Palade

B. Fontana

C. Dalton

D. Waldeyer

Answer:



Watch Video Solution

103. Nucleolus is

A. Granular body

B. Naked body

C. Membrane bounded body

D. a and b

Answer:



Watch Video Solution

104. Metabolically and genetically inert region of chromatin is called

- A. Euchromatin
- B. Nuclear reticulum
- C. Heterochromation

D. Chromatid

Answer:



Watch Video Solution

105. Which of the following statements about inclusion bodies is incorrect ?

A. They lie free in the cytoplasm

B. These represent reserve material in
cytoplasm

C. They are not bound by any membrane

D. These are involved in ingestion of food particles

Answer:



Watch Video Solution

106. New cells generate from.



Watch Video Solution

107. Match the following:

Column I

a) Cristae

b) Cisternae

c) Thylakoids

Column II

i) Flat membranous sacs in stroma

ii) Infoldings in mitochondria

iii) Disc-shaped sacs in Golgi apparatus



Watch Video Solution

108. Growth of cell wall during cell elongation take place by.

A. Apposition

B. Intussusception

C. Both a and b

D. Super position

Answer:



Watch Video Solution

109. Plasma membrane is made up of

A. Proteins and cellulose

B. Proteins and phospholipid

C. Proteins and carbohydrates

D. Proteins, Phospholipid and some carbohydrates

Answer:



Watch Video Solution

110. Plasma membrane is fluid structure due to presence of

A. Carbohydrates

B. Lipid

C. Glycoprotein

D. Polysaccharide

Answer:



Watch Video Solution

111. Cell wall is present in

A. Plant cell

B. Prokaryotic cell

C. Algal cell

D. All of the above

Answer:



Watch Video Solution

112. Plasma membrane is fluid structure due to presence of

A. Selectively permeable

B. Permeable

C. Inpermeable

D. Semipermeable

Answer:



Watch Video Solution

113. Mitochondria DNA is

A. Naked

B. Circular

C. Double stranded

D. All of the above

Answer:



Watch Video Solution

114. Lysosomes are not helpful in

- A. Osteogenesis
- B. Cellular digestion
- C. Metamorphosis
- D. Lipogenesis

Answer:



Watch Video Solution

115. Which of the following set of organelles contain DNA

- A. Mitochondria, Peroxysome
- B. Plasma membrane, ribosome
- C. Mitochondria, chloroplast
- D. Chloroplast, dictyosome

Answer:



116. Golgi body is absent in

A. Prokaryotes

B. Mature mammalian RBC

C. Eukaryotes

D. All of the above

Answer:



117. A common characteristic feature of plant sieve tube cells and most of mammalian erythrocytes is

- A. Absence of mitochondria
- B. Presence of cell wall
- C. Presence of haemoglobin
- D. Absence of nucleus

Answer:



Watch Video Solution

118. Select one which is not true for ribosome

A. Made of two sub units

B. Form polysome

C. May attach to mRNA

D. Have no role in protein synthesis

Answer:



Watch Video Solution

119. Which one of these is not a eukaryote?

A. Euglena

B. Anabaena

C. Spirogyra

D. Agaricus

Answer:



Watch Video Solution

120. which of the following dyes is best suited for staining chromosomes?

A. Basic fuchsin

B. Safranin

C. Methylene blue

D. Carmine

Answer:



Watch Video Solution

121. Different cells have different sizes. Arrange the following cells in an ascending order of their size. Choose the correct option among the followings:

Mycoplasma

Ostrich egg

Human RBC

Bacteria

A. I, iv, iii and ii

B. I, ii, iii and iv

C. ii, I, iii and iv

D. iii, ii, I and iv

Answer:



Watch Video Solution

122. Which of the following features is common to prokaryotes and many eukaryotes?

A. Chromosomes present

B. Cell wall present

C. Nuclear membrane present

D. Sub cellular organelles present

Answer:



Watch Video Solution

123. Who proposed the fluid mosaic model of plasma membrane?

A. Camilo Golgi

B. Schleiden and Schwann

C. Singer and Nicolson

D. Robert Brown

Answer:



Watch Video Solution

124. Which of the following statements is true for a secretory cell?

A. Golgi apparatus is absent

B. Rough Endoplasmic Reticulum (RER) is easily observed in the cell

C. Only Smooth Endoplasmic Reticulum

(SER) is present

D. Secretory granules are formed in

nucleus

Answer:



Watch Video Solution

125. What is a tonoplast?

A. Outer membrane of mitochondria

B. Inner membrane of chloroplast

C. Membrane boundary of the vacuole of
plant cells

D. Cell membrane of a plant cell

Answer:



Watch Video Solution

126. Which of the following is not true of a eukaryotic cell?

- A. It has 80S types of ribosome present in the mitochondria
- B. It has 80S types ribosome present in the cytoplasm
- C. Mitochondria contain circular DNA
- D. Membrane bound organelles are present

Answer:



Watch Video Solution

127. Which of the following statements is not true for plasma membrane?

A. It is present in both plant and animal cell

B. Lipid is present as a bilayer in it

C. Proteins are present integrated as well as loosely associated with the lipid bilayer.

D. Carbohydrates is never found in it

Answer:



Watch Video Solution

128. Plastid differs from mitochondria on the basis of one of the following features. Mark the right answer.

- A. Presence of two layers of membrane
- B. Presence of ribosome
- C. Presence of chlorophyll
- D. Presence of DNA

Answer:



Watch Video Solution

129. Which of the following is not a function of cytoskeleton in a cell?

- A. Intracellular transport
- B. Maintenance of cell shape and structure
- C. Support of the organelle
- D. Cell motility

Answer:



Watch Video Solution

130. The stain used to visualize mitochondria is

- A. Fast green
- B. Safranin
- C. Aceto carmine
- D. Janus green

Answer:



Watch Video Solution

131. The inherent capacity of a cell to regenerate a new whole organism is called

- A. Ontogeny
- B. Totipotency
- C. Phylogeny
- D. Pleuropotency

Answer:



Watch Video Solution

132. Spherical form of bacteria are called as

- A. Bacilli
- B. Cocci
- C. Vibrios
- D. Spirilla

Answer:



Watch Video Solution

133. One of the following generally absent in bacterial cell wall

A. Peptidoglycan

B. Cellulose

C. Murein

D. Lipid

Answer:



134. Nucleoid consists of

A. Circular DNA

B. Circular double stranded DNA

C. Single, circular, double stranded DNA

D. Single, circular, double stranded DNA

without histone protein

Answer:



135. The particles present on the surface of cristae are called as

A. Oxysomes

B. F_1 particles

C. Mesosomes

D. a and b

Answer:



Watch Video Solution

136. Which of the following statement is not true

- A. Both mitochondria and chloroplast have more than one membrane
- B. Both mitochondria and chloroplast provide energy to cells in the same way
- C. Only chloroplast contain a pigment chl-II
- D. Both animal and plant cells contain mitochondria

Answer:



Watch Video Solution

137. Autonomic genome system is present in

- A. Ribosomes and chloroplast
- B. Mitochondria and ribosomes
- C. Mitochondria and chloroplast
- D. Golgi bodies and mitochondria

Answer:



Watch Video Solution

138. E.R. is

- A. Membrane bounded cell organelle
- B. Single membrane bounded cell organelle
- C. Double membrane bounded cell organelle
- D. Non membrane bounded cell organelle

Answer:



[Watch Video Solution](#)

139. The ultra structure of Golgi complex was described by

A. Golgi

B. Dalton and Felix

C. Duve

D. Singer and Nicholson

Answer:



[Watch Video Solution](#)

140. Cells with secretory function have abundant.

A. Dictyosomes

B. E.R.

C. Lysosomes

D. Osteosomes

Answer:



Watch Video Solution

141. The lysosome which are formed by the fusion of to primary lysosome with endocytosis vacuoles are called

- A. Autophagic vacuoles
- B. Heterophagic vacuoles
- C. Residual bodies
- D. None of these

Answer:



Watch Video Solution

142. Peroxisome contain the enzyme for synthesis of

A. Peroxide

B. ATP

C. Lipids

D. Proteins

Answer:



Watch Video Solution

143. The cytoplasmic area surrounding the centrioles is called.

A. Sarcolemma

B. Centrosome

C. Centromere

D. Cytosome

Answer:



Watch Video Solution

144. Match list-I and list-II and select the correct answer using code given below the list.

List-I	List-II
1. Microtubules	Structural component of cilia
2. Centrioles	Store hydrolytic enzymes
3. Peroxisomes	Store oil proteins and starch in plants

- A. 1, 2 and 3 are correct
- B. 1 and 2 are correct, 3 false
- C. 1 is correct, 2 and 3 are false
- D. 1 and 3 are correct, 2 is false

Answer:



Watch Video Solution

145. The light stained and diffused region of chromatin is called as

- A. Euchromatin
- B. Heterochromatin
- C. Chromatin network
- D. Chromosomes

Answer:



Watch Video Solution

146. Fibrous lamina is found in nucleus

- A. Outside the outer nuclear membrane
- B. Inner to inner nuclear membrane
- C. In chromatin network
- D. In nucleolus

Answer:



[Watch Video Solution](#)

147. Which one is apparato reticulare interno?

- A. Golgi apparatus
- B. Endoplasmic reticulum
- C. Microfilaments
- D. Microtubules

Answer:



[Watch Video Solution](#)

148. Magnification of compound microscope is not connected with

- A. Numerical aperture
- B. Focal length of object
- C. Focal length of eye place
- D. Tube length

Answer:



Watch Video Solution

149. The prokaryotic flagella possess

- A. Unit membrane enclosed fibre
- B. Protein membrane enclosed fibre
- C. 9 + 2 membrane enclosed structure
- D. Helically arranged protein molecule

Answer:



Watch Video Solution

150. Which of the following is correct regarding enzyme of lysosome.

A. Lysosomes enzymes beings mainly

lipolysis

B. Lysosomes enzymes involve in active

transport of molecules

C. Lysosome enzymes are rich with

polyribosomes

D. Lysosome enzymes do not digest their own membrane proteins

Answer:



Watch Video Solution

151. Organelle/organoid involved in genetic engineering is?

A. Mitochondria

B. Plasmid

C. Lysosome

D. Golgi apparatus

Answer:



Watch Video Solution

152. Cell recognition and adhesion occur due to biochemicals of cell membranes named.

A. Protein

B. Lipid

C. Protein and lipid

D. Glycoprotein and Glycolipid

Answer:



Watch Video Solution

153. Which is correct about cell theory in view of current status of our knowledge about cell structure?

A. It needs modification due to discovery of subcellular structures like chloroplast and mitochondria

B. Modified cell theory means that all living beings are composed of cells capable of reproducing

C. Cell theory does not hold good because all living being do not have cellular organization.

D. Cell theory means that all living objects consists of cells whether or not capable of reproducing.

Answer:



Watch Video Solution

154. Protein synthesis in a animal cell occurs.

A. Only on the ribosome present in cytosol

B. Only on ribosomes attached to the nuclear envelope and E.R

C. On ribosomes present in the nucleolus as well as in cytoplasm

D. On ribosomes in cytoplasm as well as in mitochondria

Answer:



Watch Video Solution

155. Vacuole in plant cells.

A. Is membrane bounded and stores proteins and lipids

B. Is membrane bounded and contains water and excretory substances

C. Lacks membrane and contains air

D. Lack membrane and contains water and excretory substances

Answer:



Watch Video Solution

156. According to "Fluid mosaic model", cell membrane are semifluid, where lipids and integral proteins can diffuse randomly. In recent years, this model has been modified in several respects. In this regard, which of the following statements is incorrect?

A. Proteins in cell membrane can travel within the lipid layer

B. Proteins can also undergo flip flop movements in the lipid bilayer

C. Proteins can remain confined within certain domains of the membrane

D. Many proteins remain completely embedded within the lipid bilayer

Answer:



Watch Video Solution

Example

1. Who observed cells under the microscope for the first time?



Watch Video Solution

2. Who made the first microscope?



Watch Video Solution

3. How do onion peel cells and our body cells differ?



[Watch Video Solution](#)

4. Why bacterial nucleus is said to be primitive?



[Watch Video Solution](#)

5. How do a combination of lenses helps in higher magnification?



Watch Video Solution

6. Why do basal body of bacterial flagella considered as smallest motor in the world?



Watch Video Solution

7. Why mitochondria are called as power house of cell chamber



[Watch Video Solution](#)

8. Are mitochondria present in all eukaryotic cells?



[Watch Video Solution](#)

9. Are mitochondria present in all eukaryotic cells?



Watch Video Solution

10. Why nucleus is considered as control unit of a cell.



Watch Video Solution

11. Can cells like Xylem or mature human RBCs called living?



Watch Video Solution

12. What is a syncytium and coenocyte?



Watch Video Solution

13. Plants have no circulatory system? Then how cells manage intercellular transport?



[Watch Video Solution](#)

14. Is nucleolus covered by membrane?



[Watch Video Solution](#)

15. Fluid mosaic model proposed by Singer and Nicolson replaced Sandwich model proposed by Danielli and Davson? Why?



[Watch Video Solution](#)

16. The RBC surface normally shows glycoprotein molecules. When determining blood group do they play any role?



Watch Video Solution

17. How cytoplasm differs from nucleoplasm in chemical composition?



Watch Video Solution

18. What is the significance of vacuole in a plant cell?



Watch Video Solution

19. What does 'S' refer in a 70S and an 80S ribosome?



Watch Video Solution

20. Mention a single membrane bound organelle which is rich in hydrolytic enzymes.



[Watch Video Solution](#)

21. What are gas vacuoles? State their functions?



[Watch Video Solution](#)

22. What is the function of a polysome?



[Watch Video Solution](#)

23. Distinguish between smooth and rough endoplasmic reticulum.



[Watch Video Solution](#)

24. Mitochondria are power house of cell.
Given reason.



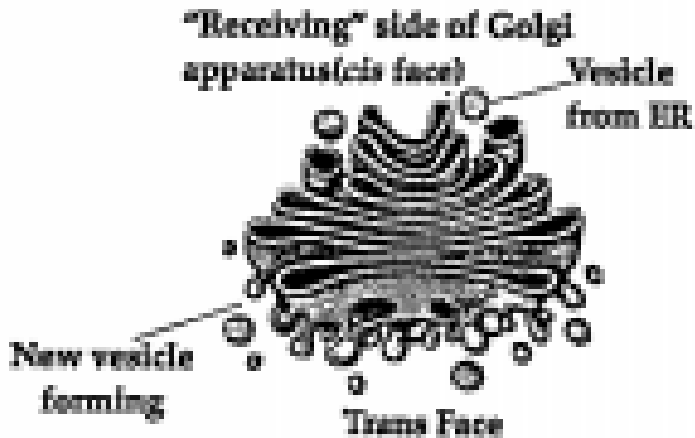
[Watch Video Solution](#)

25. What are types of plastids?



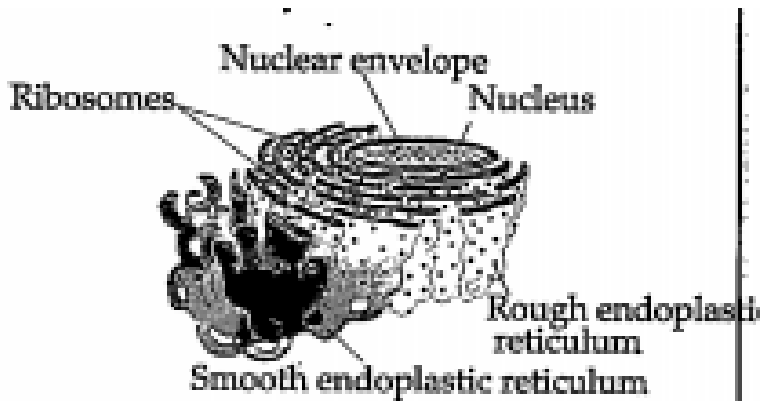
Watch Video Solution

26. Label the diagrams and write down the details of concept in your word.



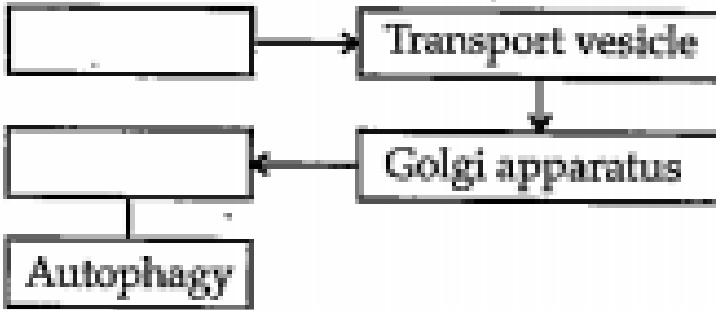
Watch Video Solution

27. Label the diagrams and write down the details of concept in your word.



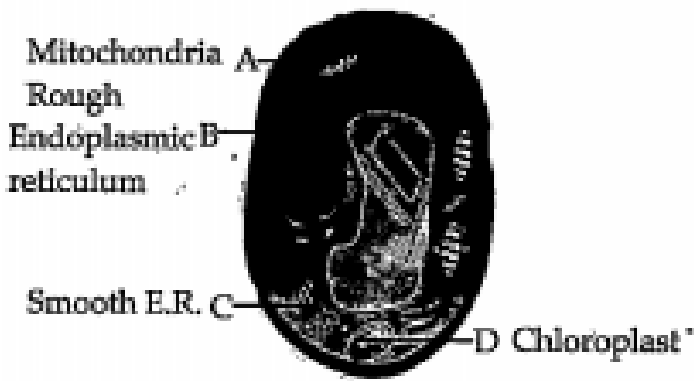
[Watch Video Solution](#)

28. Complete the flow chart.



[Watch Video Solution](#)

29. Label the A, B, C, and D in above diagram and write the functions of organelles A and B.



[Watch Video Solution](#)

30. Identify each cell structures or organelle from its description below:

Manufactures ribosome.



[Watch Video Solution](#)

31. Identify each cell structures or organelle from its description below:

Carrys out photosynthesis.



Watch Video Solution

32. Identify each cell structures or organelle from its description below:

Can bud of vesicle from which form Golgi apparatus.



Watch Video Solution

33. Identify each cell structures or organelle from its description below:

Manufacture ATP in animal and plant cells.



Watch Video Solution

34. Identify each cell structures or organelle from its description below:

Selective permeable.



Watch Video Solution

35. Onion cells have no chloroplast. How can we tell they are plants?



Watch Video Solution

36. Discuss briefly the role of nucleolus in the cells actively involved in protein synthesis.



Watch Video Solution

37. Explain the association of carbohydrate to the plasma membrane and its significance.



Watch Video Solution

38. Comment on the cartwheel structure of centriole.



Watch Video Solution

39. Briefly describe the cell theory.



[Watch Video Solution](#)

40. Differentiate between Rough Endoplasmic Reticulum (RER) and Smooth Endoplasmic Reticulum (SER).



[Watch Video Solution](#)

41. Give the biochemical composition of plasma membrane. How are lipid molecules arranged in the membrane?





[Watch Video Solution](#)

42. What are plasmids? Describe their role in bacteria.



[Watch Video Solution](#)

43. What are histones? What are their functions?



[Watch Video Solution](#)

44. What structural and functional attributes must a cell have to be called a living cell?



Watch Video Solution

45. Briefly give the contributions of the following scientists in formulating the cell theory

Robert Virchow



Watch Video Solution

46. Briefly give the contributions of the following scientists in formulating the cell theory

Schleiden and Schwann



Watch Video Solution

47. Is extra genomic DNA present in prokaryotes and eukaryotes? If yes, indicate their location in both the types of organisms.



Watch Video Solution

48. Structure and functions are correlatable in living organisms. Can you justify this by taking plasma membrane as an example?



Watch Video Solution

49. Eukaryotic cells have organelles which may (a) not be bound by a membrane (b) bound by a single membrane (c) bound by a double membrane Group the various subcellular organelles into these three categories.



[Watch Video Solution](#)

50. which Eukaryotic cells have organelles which may bound by a single membrane



[Watch Video Solution](#)

51. which Eukaryotic cells have organelles which may bound by a double membrane





[Watch Video Solution](#)

52. The genomic content of the nucleus is constant for a given species whereas the extra chromosomal DNA is found to be variable among the members of a population. Explain.



[Watch Video Solution](#)

53. Mitochondria are power house of cell. Given reason.



[Watch Video Solution](#)

54. Is there a species specific or region specific type of plastids? How does one distinguish one from the other?



[Watch Video Solution](#)

55. Write the functions of the following:

Centromere



[Watch Video Solution](#)

56. Write the functions of the following:

Cell wall



Watch Video Solution

57. Write the functions of the following:

Smooth ER



Watch Video Solution

58. Write the functions of the following:

Golgi apparatus



Watch Video Solution

59. Write the functions of the following:

Centrioles



Watch Video Solution

60. Are the different types of plastids interchangeable? If yes, give examples where they are getting converted from one type to another.



Watch Video Solution

61. What is mesosome in a prokaryotic cell?



Watch Video Solution

62. How do neutral solutes move across the plasma membrane? Can the polar molecules also move across it in the same way? If not, then how are these transported across the membrane?



Watch Video Solution

63. Name two cell-organelles that are double membrane bound. What are the characteristics of these two organelles? State

their functions and draw labelled diagrams of both.



[Watch Video Solution](#)

64. What are the characteristics of prokaryotic cells?



[Watch Video Solution](#)

65. Multicellular organisms have division of labour. Explain.



Watch Video Solution

66. Cell is the basic unit of life. Discuss in brief.



Watch Video Solution

67. What are nuclear pores? State their function.



Watch Video Solution

68. Both lysosomes and vacuoles are endomembrane structures, yet they differ in terms of their functions. Comment.



Watch Video Solution

69. Describe the structure of the following with the help of labelled diagrams.

Nucleus



Watch Video Solution

70. Describe the structure of the following with the help of labelled diagrams.

Centrosome



Watch Video Solution