



BIOLOGY

BOOKS - NIKITA PUBLICATION

KINGDOM ANIMALIA

Exercise

1. On the basis of organization, animals are grouped into.

A. Metazoa and Eumatozoa

B. Parazoa and Eumatozoa

C. Protozoa and Parazoa

D. None of these

Answer:



Watch Video Solution

2. An entrocoelomate invertebrate group is

A. Annelida

B. Arthropoda

C. Mollusca

D. Echinodermata

Answer:



Watch Video Solution

3. Organisms attached to substratum generally possesses.

A. Asymmetrical body

B. Radial symmetry

C. One single opening of digestive canal

D. Cilia on the surface to create water current

Answer:



Watch Video Solution

4. The body symmetry found in snail is

A. Asymmetry

B. Spherical

C. Radial

D. Bilateral

Answer:



Watch Video Solution

5. In Non chordates, if nerve cord is present, it is

A. Dorsal in position

B. Ventral in position

C. Lateral in position

D. Dorsotaleral in position

Answer:



Watch Video Solution

6. Body does not show any segmentation in

A. Frog

B. Cockroach

C. Earthworm

D. Pila

Answer:



Watch Video Solution

7. Blind sac body plan is shown by

A. Round worm

B. Flat worm

C. Ringworm

D. Cnidaria

Answer:



Watch Video Solution

8. True coelom appeared first in

A. Aschelminthes

B. Chordata

C. Echinodermata

D. Annelida

Answer:



Watch Video Solution

9. Which is common in earthworm cockroach and centipeds?

- A. haemocoel
- B. Metamerism
- C. Sexual dimorphism
- D. Cutious endoskeleton

Answer:



Watch Video Solution

10. How many germ layers are found in sponges.

A. one

B. two

C. three

D. absent

Answer:



Watch Video Solution

11. Which types of cells are found exclusively in sponges?

A. Amoebocytes

B. Pigment cells

C. Nerve cells

D. Choanocytes

Answer:



Watch Video Solution

12. Gemmules in sponges are helpful in

- A. Water circulation
- B. Digestion
- C. Sexual reproduction
- D. Asexula reproduction

Answer:



Watch Video Solution

13. First group of multicellular organism is

A. Cindaria

B. Porifera

C. Annelida

D. Arthropoda

Answer:



Watch Video Solution

14. One of the following is applicable to all sponges

A. Marine

B. Calcareous spicules

C. Radial symmetry

D. Power of regeneration

Answer:



Watch Video Solution

15. Animals devoid of respiratory, excretory and circulatory organs are

- A. Liver fluke
- B. Tape worm
- C. Thread worm
- D. Sponges

Answer:



Watch Video Solution

16. One of the following is not sponge

A. Sycon

B. Spongilla

C. Corallium

D. Euspongia

Answer:



Watch Video Solution

17. Which of the following sponges is popular for beauty of skeleton.

A. Sycon

B. Euspongia

C. Spongilla

D. Euplectella

Answer:



Watch Video Solution

18. Budding as a normal mode of asexual reproduction is found in

- A. Sponges and starfish
- B. Tape worm and Hydra
- C. Starfish and Hydra
- D. Hydra and sponges

Answer:



Watch Video Solution

19. Which of the following is boring sponge

A. Cliona

B. Chalina

C. Euplectella

D. Corals

Answer:



Watch Video Solution

20. Reproductive cells of sponges are formed from

- A. Pinacocytes
- B. Choanocytes
- C. Archaeocytes
- D. Trophocytes

Answer:



Watch Video Solution

21. Venus Flower Basket belongs to phylum

A. Porifera

B. Coelenterata

C. Mollusca

D. Echinodermata

Answer:



Watch Video Solution

22. In sponges, incurrent canal is lined by

A. Pinacocytes

B. Choanocytes

C. Porocytes

D. None of these

Answer:



Watch Video Solution

23. Excretory matter of sycon is

A. Urea

B. Ammonia

C. Uric acid

D. Creatine

Answer:



Watch Video Solution

24. Who first recognized that the sponges are animals?

A. Trembely

B. Aristotle

C. Linnaeus

D. Ellis

Answer:



Watch Video Solution

25. The generic name of glass rope sponge is

A. Spongilla

B. Euplectella

C. hyalonema

D. Scypha

Answer:



Watch Video Solution

26. The power of regeneration in sponges is due to

A. Thesocytes

B. Archaeocytes

C. Amoebocytes

D. Scleroblasts

Answer:



Watch Video Solution

27. Which of the following animals is coelenterate

A. Sea cow

B. Sea anemone

C. Sea horse

D. Sea cucumber

Answer:



Watch Video Solution

28. In which phylum nerve cells are found but nerves are absent

A. Porifera

B. Platyheminthes

C. Coelenterata

D. Annelida

Answer:



Watch Video Solution

29. Precious Red coral used in Jewellery is

A. *Astraea*

B. *Fungia*

C. *Tubipora*

D. Corallium

Answer:



Watch Video Solution

30. Characteristic of cnidaria is

- A. Marine habitat
- B. Presence of tentacles
- C. Gastrovascular cavity
- D. Collar cells

Answer:



Watch Video Solution

31. Hydra is

- A. Fresh water and radially symmetrical
- B. Marine and radially symmetrical
- C. Fresh water and triploblastic
- D. Marine and acoelomate

Answer:



[Watch Video Solution](#)

32. Medusa form of coelenterates are

- A. Free swimming
- B. Umbrella shaped
- C. Cylindrical
- D. a and b

Answer:



[Watch Video Solution](#)

33. Specilized cells found in coelenterates are called

A. Choanocyst

B. Cnidocyst

C. Nematocyst

D. b and c

Answer:



Watch Video Solution

34. Mode of nutrition in cnidaria is

A. Saphrophytic

B. herbivorous

C. Insectivorous

D. Carnivorous

Answer:



Watch Video Solution

35. Common name of fungi is

A. Mushroom coral

B. Red coral

C. Brain coral

D. Organ pipe coral

Answer:



Watch Video Solution

36. Jelly fish belongs to phylum

A. mollusea

B. Echinodermata

C. Coelenterata

D. Ctenophora

Answer:



Watch Video Solution

37. Who first discovered regeneration in Hydra?

A. Aristotle

B. Linnaeus

C. Darwin

D. Trambly

Answer:



Watch Video Solution

38. Portuguese man of war is

A. Pennatula

B. Coral

C. Physalia

D. Obelia

Answer:



Watch Video Solution

39. The study of coelenterates is known as

- A. Arthrology
- B. Splanchnology
- C. Cnidology
- D. Nidology

Answer:



Watch Video Solution

40. All ctenophores are

A. Fresh water

B. Marine

C. Estuarine

D. a and b

Answer:



Watch Video Solution

41. Paedogenesis is observed in

A. Ctenophores

B. Liver fluke

C. Ascaris

D. a and b

Answer:



Watch Video Solution

42. Tentacles of ctenophores contain

- A. Cindoblest
- B. Colloblasts
- C. Digestive glands
- D. All of these

Answer:



Watch Video Solution

43. Comb plates of ctenophores possess

A. Cilia for filter feeding

B. Cilia for locomotion

C. Teeth fro crushing

D. Teeth for filtering

Answer:



Watch Video Solution

44. The animals like Beroe, Homiphora etc are belongs to

- A. Ctenophora
- B. Ctenidaria
- C. Porifera
- D. None of these

Answer:



Watch Video Solution

45. Flatworms resemble to coelentrates in

A. Body plan

B. Symmetry

C. Number of germ layers

D. Parastistism

Answer:



Watch Video Solution

46. Flame cells are excretory organs- of

A. Coelocntrates

B. Sponges

C. Plathyhelminthes

D. Echinodermata

Answer:



Watch Video Solution

47. Which of the following system is well developed in flat worms.

A. Digestive

B. Reproductive

C. Circulatory

D. Nervous

Answer:



Watch Video Solution

48. Flat worms are

A. Unisexual

B. Hermaphrodite

C. Monoecious

D. b and c

Answer:



Watch Video Solution

49. Pseudometamerism is found in

A. Fasciola

B. Taenia

C. Ascaris

D. Planaria

Answer:



Watch Video Solution

50. Bilateral symmetrical but acoelomate animal is

A. Liver fluke

B. Ascaris

C. Octopus

D. Jelly fish

Answer:



Watch Video Solution

51. Which of the following is a free living flatworm

A. Liver fluke

B. Taenia

C. Planaria

D. Echinococcus

Answer:



Watch Video Solution

52. Regeneration power can best be seen in

A. Planaria

B. Cockroach

C. Earthworm

D. Balanoglossus

Answer:



Watch Video Solution

53. One of the following, is not characteristic of all platyhelminthes.

A. Triploblastic

B. Acoelomate

C. Bilateral symmetry

D. Parasitism

Answer:



Watch Video Solution

54. The disease liver rot is caused by

A. Ascaris

B. Taenia solium

C. Tubellarians

D. Fasciola hepatica

Answer:



Watch Video Solution

55. Aschelminthes are commonly called as

- A. Ring worms
- B. Round worms
- C. Hook worms
- D. Flat worms

Answer:



Watch Video Solution

56. Round worms differ from flat worms in having a

- A. Pseudocoel
- B. Circular muscle layer
- C. Ciliary cuticle
- D. Suckers

Answer:



57. Ascaris is

- A. Ectoparasite
- B. Endoparasite
- C. Symbiont
- D. Free living

Answer:



58. Female *Ascaris* is identified on the basis of

A. A common cloacal aperature

B. Strainght posterior end

C. Presence of preanal and postanal
papillae

D. Presence of two spicules at posterior
end

Answer:



Watch Video Solution

59. Excretory structures in adult *Ascaris* are?

- A. Nephridia
- B. Renette cells
- C. Excretory canals
- D. malpighian tubules

Answer:



Watch Video Solution

60. Annelids are also called as

A. Round worms

B. ringed worms or segmented worms

C. Hook worms

D. Flat worms

Answer:



Watch Video Solution

61. The first true coelomate group of animals is

A. Nematohelminthes

B. Arthropoda

C. Annelida

D. Chrodata

Answer:



Watch Video Solution

62. Closed circulation is found in

A. Arthropoda

B. Annelida

C. Mollusca

D. Echinodermata

Answer:



Watch Video Solution

63. Which one is called as blood sucker

A. Earthworm

B. Leech

C. Nereis

D. Aphrodite

Answer:



Watch Video Solution

64. Saliva of leech contain a anticoagulant called

A. Fibrinogen

B. Hirudin

C. heparine

D. Prothrombin

Answer:



Watch Video Solution

65. Pickup mismatched

A. Nematohelminthehs-Ascaris

B. Annelida-Octopus

C. Cnidaria-Hydra

D. Arthropoda-House fly

Answer:



Watch Video Solution

66. Nereis belongs to

A. Mollusea

B. Echinodermata

C. Arthropoda

D. Annelida

Answer:



Watch Video Solution

67. The clitellum or cingulum in earthworm is present in

A. 12, 13 and 14 segments

B. 13, 14 and 15 segments

C. 14, 15 and 16 segments

D. 16, 17 and 18 segments

Answer:



Watch Video Solution

68. Which one is commonly called as sea mouse?

A. Aphrodite

B. peripatus

C. Terebella

D. Chaetopterus

Answer:



Watch Video Solution

69. The largest and most successful phyla of animals is

A. Echinodermata

B. Arthropoda

C. Coelenterata

D. Chordata

Answer:



Watch Video Solution

70. Which of the following phyla is omnipresent?

A. Arthropoda

B. Mollusca

C. Annelida

D. Echinodermata

Answer:



Watch Video Solution

71. Ecdysis is shown by

A. Sponges

B. Cnidarian

C. Arthropods

D. Annelids

Answer:



Watch Video Solution

72. Mouth parts of Arthropods are meant for

A. Biting

B. Chewing

C. Sucking

D. All of these

Answer:



Watch Video Solution

73. Circulatory system of arthropods is

A. Open type

B. Closed type

C. Without blood cells

D. b and c

Answer:



Watch Video Solution

74. Excretory organs in Arthropoda are

A. Green glands

B. Malpighian tubules

C. a and b

D. Nephridia

Answer:



Watch Video Solution

75. Which is not a insect?

A. Housfly

B. Spider

C. Cockroach

D. Mosquito

Answer:



Watch Video Solution

76. Chitinous plates making the exoskeleton in arthropods are called

- A. Tergites
- B. Sternites
- C. Pleurites
- D. Sclerites

Answer:



77. Colleterial glands are present in

- A. Female cockroach
- B. Male cockroach
- C. Both the sexes
- D. None of the two

Answer:



78. Which is not exclusive trait of arthropoda?

- A. Presence of wings
- B. Jointed appendages
- C. Haemocoel
- D. Chitinous exoskeleton

Answer:



Watch Video Solution

79. Entomology is the study of

A. Enteron

B. Enteric epithelium

C. Insects

D. Arachnids

Answer:



Watch Video Solution

80. An insect helping in pollination is

- A. *Drosophila*
- B. *Musca nebulosa*
- C. *Bombyx mori*
- D. *Apis dorsata*

Answer:



Watch Video Solution

81. An arthropod having unjointed legs is

A. Limules

B. Peripatus

C. Eupagurus

D. Milliapedes

Answer:



Watch Video Solution

82. Which of the following is a secretion of insect?

A. Pearl

B. Honey

C. Lac

D. Coral

Answer:



Watch Video Solution

83. Which of the following set includes pathogenic arthropods?

A. Tse- tse fly, mosquito, flea- plague

B. Crab, culex, spider

C. Anopheles, culex, cray fish

D. Silver- fish, housefly, sand fly

Answer:



Watch Video Solution

84. The term mollusca is referred to

- A. Shelled animals
- B. Aquatic animals
- C. Soft bodies animals
- D. Mantle bearers

Answer:



Watch Video Solution

85. Which of the following is derived from Latin word?

A. Porifera

B. Annelida

C. Mollusca

D. All of these

Answer:



Watch Video Solution

86. Molluscs are mostly bilateral symmetrical except

A. Sepia

B. Chiton

C. Unio

D. Pila

Answer:



Watch Video Solution

87. The shell found in most of the mollusca is secreted by

A. Food

B. Head

C. Mantle

D. None of these

Answer:



Watch Video Solution

88. Aquatic mollusca has respiratory organs called

A. Gills

B. Cnidaria

C. Ctenidia

D. Radula

Answer:



Watch Video Solution

89. In mollusca circulatory system is open type except

A. Snail

B. Dentalium

C. Chiton

D. Sepia

Answer:



Watch Video Solution

90. Kidney like excretory organs of mollusca are called

A. Osphradia

B. Ctenida

C. Organs of Bojanus

D. malpighian tubules

Answer:



Watch Video Solution

91. Tusk shell is the common name of

A. Chiton

B. Dentalium

C. Octopus

D. Pila

Answer:



Watch Video Solution

92. In which of the following groups trochophore larva occurs

- A. Annelida and porifera
- B. Coclenterata and Annelida
- C. Mollusca and coelenterate
- D. Annelida and Mollusca

Answer:



Watch Video Solution

93. Cuttle fish is a member of

A. Mollusca

B. Echinodermata

C. Pisces

D. Amphibia

Answer:



Watch Video Solution

94. Study of mollusca is called

A. Malacology

B. Conchology

C. Mammology

D. Mastology

Answer:



Watch Video Solution

95. The most primitive mollusc is

A. Patella

B. Neopilina

C. Chiton

D. Dentalium

Answer:



Watch Video Solution

96. Bilaterally symmetrical and acoelomate animals are exemplified by

A. Aschelminthes

B. Annelida

C. Ctenophora

D. Platyhelminthes

Answer:



Watch Video Solution

97. Which of the following statements are true for the phylum-Chordata ?

A. In Urochordata notochord extends from head to tail and it is present throughout their life.

B. In Vertebrata notochord is present during the embryonic period-only.

C. Central nervous system is dorsal and hollow.

D. Chordata is divided into 3 subphyla :
Hemichordata, Tunicata and
Cephalochordata.

Answer:



Watch Video Solution

98. Which, is the important site of formation of glycoproteins and glycolipids in eukaryotic cells?

- A. Golgi bodies
- B. Polysomes
- C. Endoplasmic reticulum
- D. Peroxisomes

Answer:



Watch Video Solution

99. Match the following columns and select the correct option.

Column - I**Column - II**

- | | |
|---|----------------------|
| i) Gregarious,
polyphagous pest | p) <i>Asterias</i> |
| ii) Adult with radial
symmetry and
larva with bilateral
symmetry | q) Scorpion |
| iii) Book lungs | r) <i>Ctenoplana</i> |
| iv) Bioluminescence | s) <i>Locusta</i> |

'i'

'ii'

'iii'

'iv'

a) r

q

p

s

b) q

p

r

s

c) p

r

q

s

d) s

p

q

r

[Watch Video Solution](#)

100. Which of the following belongs to a minor phylum.

A. Comb jelly

B. Jelly fish

C. Herdmania

D. Salpa

Answer:



Watch Video Solution

101. Select the animal having venous heart.

A. Crocodile

B. Salamander

C. Rohu

D. Toad

Answer:



Watch Video Solution

102. In ascaris,.....

A. Mesoglea is present

B. Endoderm is a discontinuous layer

C. Mesoderm is present in patches

D. Body cavity is absent

Answer:



Watch Video Solution

103. Which of the following is incorrect in case of birds?

A. Presence of teeth

B. Presence of scales

C. Nucleated RBCs

D. Hollow bones

Answer:



Watch Video Solution

104. Chitinous exoskeleton is a characteristic of.....

A. Dentalium

B. Antedon

C. Millipede

D. Sea urchin

Answer:



Watch Video Solution

105. In some animal groups, the body is formed divided into compartments with at least some organs repeated. This characteristic feature is named.

A. Segmentation

B. Metamerism

C. Metagenesis

D. Metamorphosis

Answer:



Watch Video Solution

106. Given below are types of cells presents in some animals. Each one is specialized to perform a single specific function except.

A. Choanocytes

B. Interstitial cells

C. Gastrodermal cells

D. Nematocytes

Answer:



Watch Video Solution

107. Which one of the following sets of animals share a four chambered heart?

A. Amphibian, Reptiles, Birds

B. Crocodiles, Birds, Mammals

C. Crocodiles, Lizards, Turtles

D. Lizards, Mammals, Birds

Answer:



Watch Video Solution

108. Which of the following pairs of animals has non glandular skin.

A. sparrow and Frog

B. Chameleon and Turtle

C. Frog and Pigeon

D. Crocodile and Tiger

Answer:



Watch Video Solution

109. Birds and mammals share one of the following characteristics as a common feature.

A. Pigment skin

B. Alimentary canal with some modification

C. Viviparity

D. Warm blood nature

Answer:



Watch Video Solution

110. Which one of the following sets of animals belong to a single taxonomic group?

A. Cuttlefish, Jellyfish, Silverfish, Dogfish,

Starfish

B. Bat, Pigeon, Butterfly

C. Monkey, Chimpanzee, Man

D. Silkworm, Tapeworm, Earthworm

Answer:



Watch Video Solution

111. Which one of the following statements is incorrect?

- A. Mesoglea is present in between ectoderm and endoderm in Obelia
- B. Radial symmetry is found in Asterias
- C. Fasciola is a pseudocoelomate animal
- D. Taenia is a triploblastic animal

Answer:



Watch Video Solution

112. Which one of the following statements is incorrect?

A. In cockroaches and prawns excretion of waste material occurs through Malpighian tubules.

B. In ctenophors, locomotion is mediated by comb plates

C. In *Fasciola* flame cells take part in excretion

D. Earthworms are hermaphrodites and yet cross fertilization take place among them.

Answer:



Watch Video Solution

113. What one of the following is oviparous?

A. Platypus

B. flying fox (Bat)

C. Elephant

D. Whale

Answer:



Watch Video Solution

114. Which one of the following is not a poisonous snake?

A. Cobra

B. Viper

C. Python

D. Krait

Answer:



Watch Video Solution

115. Match the following list of animals with their level of organisation.

Division of Labour	Animal
A. Organ	i. <i>Pheritima</i>
B. Cellular aggregate level	ii. <i>Fasciola</i>
C. Tissue level	iii. <i>Spongilla</i>
D. Organ system level	iv. <i>Obelia</i>

Choose

the correct match showing division of labour with animal example.

A. i-B, ii-C, iii-D, iv-A

B. i-B, ii-D, iii-C, iv-A

C. i-D, ii-A, iii-B, iv-C

D. i-A, ii-D, iii-C, iv-B

Answer:



Watch Video Solution

116. Body cavity is the cavity present between body wall and gut wall. In some animals the body cavity is not lined by mesoderm. Such animals are called.

- A. Acoelomate
- B. Pseudocoelomate
- C. Coelomate
- D. Haemocoelomate

Answer:



Watch Video Solution

117. Match the column A with column B and choose the correct option.

Column A	Column B
A. Porifera	i) Canal System
B. Aschelminthes	ii) Water-vascular system
C. Annelida	iii) Muscular Pharynx Comb plates
D. Arthropods	iv) Jointed appendages
E. Echinodermata	v) Metameres

A. A-ii, B-iii, C-v, D-iv, E-i

B. A-i, B-v, C-iii, D-iv, E-i

C. A-i, B-iii, C-v, D-iv, E-ii

D. A-i, B-v, C-iii, D-iv, E-ii

Answer:



Watch Video Solution

118. Gemmules in sponges is.

A. Internal bud

B. External bud

C. Lateral bud

D. Gamete

Answer:



Watch Video Solution

119. Hydra is coelenterates because it possesses.

A. Mesogloea

B. Nematocyst

C. Body cavity

D. Tentacles

Answer:



Watch Video Solution

120. Find out free livign fresh water flat worm.

A. Taenia

B. Fasciola

C. Planaria

D. Schistosoma

Answer:



Watch Video Solution

121. Aschelminthes includes.

A. Round worms and tapeworms.

B. Hook worms, filarial worms and tapeworms

C. Filarial worms, round worms and hook worm.

D. Round worms thread worms and flat worms

Answer:



Watch Video Solution

122. Suctorial mouth occurs in.

A. Nereis

B. Leech

C. Taenia

D. Cockroach

Answer:



Watch Video Solution

123. What is true about Nereis, Scorpion, cockroach and silver fish?

- A. they all have joined paired appendages
- B. they all possess dorsal heart
- C. none of them is aquatic

D. they all belongs to same phylum

Answer:



Watch Video Solution

124. Shell of mollusca is derived from

A. foot

B. mantle

C. visceral mass

D. buccal diverticulum

Answer:



Watch Video Solution

125. Radial symmetry is observed in

Platyhelminthes

Coelenterata

Aschelminthes

Echinodermata

A. II, III and IV

B. I, II and IV

C. II, III and I

D. II and IV

Answer:



Watch Video Solution

126. Salpa and Branchiostomata belongs to

A. Urochordata and cephalochordata

B. Urechordata and hemichordata

C. Cephalochordata and urochordata

D. Hemichordata and cephalochordata

Answer:



Watch Video Solution

127. Match the following columns and choose the correct option.

Column-I
A. Cyclostomata
B. Aves
C. Balanoglossus
D. Osteichthyes

Column-II
1. Hemichordata
2. Air sacs
3. Agnatha
4. Pisces

	A	B	C	D
a)	3	2	1	4
b)	4	3	2	1
c)	1	3	2	4
d)	2	1	3	4



Watch Video Solution

128. Limbless amphibians are called.

A. Paddle worms

B. Glow worms

C. Caecilian worms

D. Pin worms

Answer:



Watch Video Solution

129. Zoological name of common Indian Krait
is?

A. Vipiper russeli

B. Naja naja

C. Bungarus caeruleus

D. Ophiophagus hannah

Answer:



Watch Video Solution

130. Which one of the following is not the characteristic of frog?

A. The skin is moist and slimy

B. Each fore limb and hind limb has five digits

C. Respiration by gills, skin and lungs

D. Absence of neck

Answer:



Watch Video Solution

131. Which of the following is a flightless bird?

A. Ostrich

B. Emu

C. Kiwi

D. All of these

Answer:



Watch Video Solution

132. The characteristics of birds without exception is

A. Omnivorous

B. Flying wings

C. Beak without teeth

D. Lay eggs with calcareous shell

Answer:



Watch Video Solution

133. Which character is not same is Aves and mammals?

- A. Single systemic arch
- B. Metanephric Kidney
- C. Seven cervical vertebrae
- D. Homeotherms

Answer:



Watch Video Solution

134. Correct set of animals of close-mammalia is.

A. Lion, Hippopotamus, Penguin, Bat

B. Lion, Bat, Whale, Ostrich

C. Hippopotamus, Penguin, Whale,
Kangaroo

D. Whale, Bat, Kangaroo, Hippopotamus

Answer:



Watch Video Solution

135. Presence of collar cells is the characteristics of

A. Coelenterata

B. Porifera

C. Mollusca

D. Arthropoda

Answer:



Watch Video Solution

136. Most of annelids are bisexual except

A. Leech

B. Aphrodite

C. Neries

D. Tubifex

Answer:



Watch Video Solution

137. Aquatic mollusca has respiratory organs called

A. Gills

B. Cnidaria

C. Radula

D. Ctenidia

Answer:



Watch Video Solution

138. Pinna is absent in

A. Whale

B. Platypus

C. Seal

D. All of these

Answer:



Watch Video Solution

139. Which of the following part of the eye is characteristic of bird.

A. Pecten

B. Lens

C. Iris

D. Retina

Answer:



Watch Video Solution

140. Retrogressive metamorphosis is found in.

A. Insect

B. Amphibians

C. Tunicates

D. Lancelets

Answer:



Watch Video Solution

141. Characteristic feature of ctenophores is

A. Free swimming and marine

B. Exhibit bioluminescence

C. Absence of cnidoblast

D. Blind sac body plan

Answer:



Watch Video Solution

142. Venous flower basket is the dried skeleton

of

A. Euspongia

B. Euplectella

C. Spongilla

D. Leucosolenis

Answer:



Watch Video Solution

143. Match the following:

A. Cliona

i) Bowl sponge

B. Pheronema

ii) Bath sponge

C. Euspongia

iii) Bread crumb sponge

D. Halichondria

iv) Boring sponge

A. a-i, b-iv, c-iii, d-ii

B. a-ii, b-i, c-iv, d-iv

C. a-iv, b-i, c-ii, d-iii

D. a-iii, b-iii, c-i, d-iii

Answer:



Watch Video Solution

144. Which of the following is cnidarian?

A. Sea Urchin

B. Sea pen

C. Sea horse

D. All of these

Answer:



Watch Video Solution

145. Herdmania is called as chordate. Explain.

A. Porifera

B. Echinodermata

C. Mollusca

D. Cnidaria

Answer:



Watch Video Solution

146. Which of the following is viviparous fish?

A. Exocoetus

B. Gambusia

C. Clarias

D. Labeo

Answer:



Watch Video Solution

147. Which of the following has scaly exoskeleton and paired copulatory organ?

A. Tiger

B. Shark

C. Lizard

D. Ostrich

Answer:



Watch Video Solution

148. All mammals without any exception are characterised by

A. Viviparity and biconcave red blood cell

B. Extra abdominal testis and four chambered heart

C. Heterodont teeth and 12 pairs of cranial nerves

D. A muscular diaphragm and milk producing glands

Answer:



[Watch Video Solution](#)

Example

1. What is the basis of classification?



[Watch Video Solution](#)

2. Who proposed five kingdom system of classification.



[Watch Video Solution](#)

3. Why there is a need for classification?



Watch Video Solution

4. Which are the larval stages of porifera?



Watch Video Solution

5. Information about coral reef and sea fan.



Watch Video Solution

6. State parasitic adaptations in Liver fluke.



[Watch Video Solution](#)

7. Give examples of free living platyhelminth.



[Watch Video Solution](#)

8. What are the merits and demerits of Hermaphroditism?



Watch Video Solution

9. What are leeches used in Ayurveda?



Watch Video Solution

10. What is the role of earthworms in agriculture? What is vermicompost?



Watch Video Solution

11. Why is phylum arthropoda considered as most successful phylum?



Watch Video Solution

12. What do we know by parthenogenesis?



Watch Video Solution

13. What do we means by living fossil?



Watch Video Solution

14. How the bees produce honey?



Watch Video Solution

15. What will happen if arthropoda do not moult?



Watch Video Solution

16. Explain the term metameric segmentation.



[Watch Video Solution](#)

17. Give the characteristics of Arthropoda.



[Watch Video Solution](#)

18. Enlist harmful Arthropods.



[Watch Video Solution](#)

19. Why do molluscs have shells?



[Watch Video Solution](#)

20. Give salient features of phylum Echinodermata.



[Watch Video Solution](#)

21. Hemichordata is connecting link between non-chordata and chordata. Give reasons.



[Watch Video Solution](#)

22. Balanoglossus is a connecting link between Non-chordates and Chordates.



Watch Video Solution

23. differentiate between chordates and non-chordates.



Watch Video Solution

24. Give difference between:

Chordates and Non chordates



Watch Video Solution

25. Herdmania is called as chordate. Explain.



Watch Video Solution

26. Given characteristics of petromyzon.

Comment on its mode of nutrition.



[Watch Video Solution](#)

27. Differentiate between Chondrichthyes and Osteichthyes on the basis of scales and caudal fin.



[Watch Video Solution](#)

28. What is the lateral line system?



[Watch Video Solution](#)

29. Why Piscean heart is called venous heart?



Watch Video Solution

30. Amphibians do not have exoskeleton. Give reason.



Watch Video Solution

31. Why are amphibians and reptiles called poikilothermic?





[Watch Video Solution](#)

32. Give adaptations in aves for flying.



[Watch Video Solution](#)

33. Aves and mammals are homotherms. Give reasons.



[Watch Video Solution](#)

34. How mammals differ from other groups of animals?



Watch Video Solution

35. Reptiles are known for having three chambered heart. Which animal shows a near four chambered condition in reptiles



Watch Video Solution

36. The circulatory system has evolved from open to closed type in Animal Kingdom. Which phylum can be called first to represents closed circulation?



Watch Video Solution

37. Pinna is part of external ear and it is found in mammals. Do aves and reptiles show external ear in any form?



Watch Video Solution

38. Fish and frog can respire in water. Can they respire through their skin? If yes, why do they have gills?



Watch Video Solution

39. Birds need to keep their body light to help in flying. Hence, they show presence of some organs only on one side. How their skeleton helps in reducing their weight?



Watch Video Solution

40. Cnidarians and Ctenophores are both diploblastic. Which other character do they have in common, which is not found in other phyla?



Watch Video Solution

41. Crab and Snail both have a protective covering. Is it made up of the same material?



Watch Video Solution

42. Sponge and sea star show calcareous protective material. Do they belong to the same Phylum?



Watch Video Solution

43. Fish and snake both have scales. How do these scales differ from each other?



Watch Video Solution

44. Lower Phyla like Arthropoda and Cnidarians show metamorphosis. It is also found in any class of Phylum Chordata?



Watch Video Solution

45. Identify the phylum in which adults exhibit radial symmetry and larva exhibit bilateral symmetry.



Watch Video Solution

46. What is metagenesis? Mention an example which exhibits this phenomenon.



Watch Video Solution

47. What is the role of feathers?



Watch Video Solution

48. Which group of chordates possess sucking and circular mouth without jaws?



[Watch Video Solution](#)

49. Give one example each for an animal possessing placoid scales and that with cycloid scales.



[Watch Video Solution](#)

50. Mention two modification in reptiles required for terrestrial mode of life.



[Watch Video Solution](#)

51. Mention one example each for animals with chitinous exoskeleton and those covered by a calcareous shell.



Watch Video Solution

52. What is the role of radula in molluscs?



Watch Video Solution

53. Name the animal, which exhibits the phenomenon of bioluminescence. Mention the phylum to which it belongs.



Watch Video Solution

54. Write one example each of the following in the space provided.

Cold blooded animal _____.



Watch Video Solution

55. Write one example each of the following in the space provided.

Warm blooded animal _____



Watch Video Solution

56. Write one example each of the following in the space provided.

Animal possessing dry and cornified skin _____.



Watch Video Solution

57. Write one example each of the following in the space provided.

Dioecious animal - -----



Watch Video Solution

58. Differentiate between a diploblastic and a triploblastic animal.



Watch Video Solution

59. Give an example of the following:

Round worm



Watch Video Solution

60. Give an example of the following:

Fish possessing poison sting



Watch Video Solution

61. Give an example of the following:

A limbless reptile/amphibian



Watch Video Solution

62. Give an example of the following:

An oviparous mammal



Watch Video Solution

63. Provide appropriate technical term in the space provided.

Blood filled cavity in arthropods_____.



Watch Video Solution

64. Provide appropriate technical term in the space provided.

Free floating form of cnidria_____.



Watch Video Solution

65. Provide appropriate technical term in the space provided.

Stinging organ of jelly fish _____.



Watch Video Solution

66. Provide appropriate technical term in the space provided.

Lateral appendages in aquatic annelids _____.



Watch Video Solution

67. Match the following:

Animals

- a) Octopus
- b) Crocodile
- c) Catla
- d) Ctenoplana

Locomotory Organ

- i) Limbs
- ii) Comb plates
- iii) Tentacles
- iv) Fins



Watch Video Solution

68. Draw neat labelled diagram.

Sycon



Watch Video Solution

69. Draw neat labelled diagram.

Aurelia



Watch Video Solution

70. Draw neat labelled diagram.

Amphioxus



Watch Video Solution

71. Draw neat labelled diagram.

Catla



[Watch Video Solution](#)

72. Draw neat labelled diagram.

Balanoglossus



[Watch Video Solution](#)

73. Draw neat labelled diagram.

Scoliodon



[Watch Video Solution](#)

74. Match the following:

Phylum	Characters
i) Annelida	a. Tube feet
ii) Mollusca	b. Ostia
iii) Ctenophora	c. Radula
iv) Porifera	d. Parapodia
v) Echinodermata	e. Comb plates



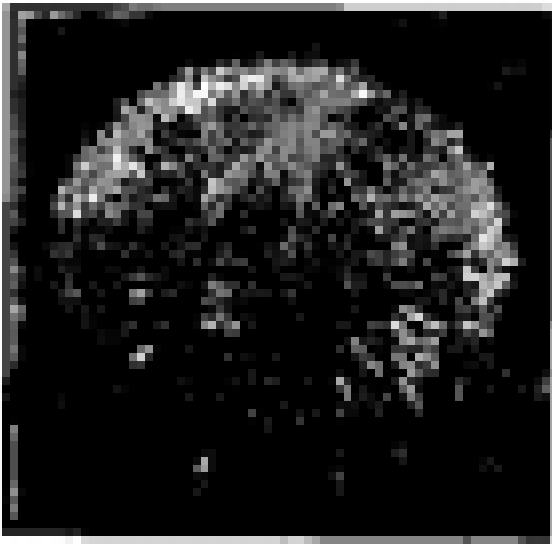
[Watch Video Solution](#)

75. Identify the animals given in picture and write feature of its phylum/class.



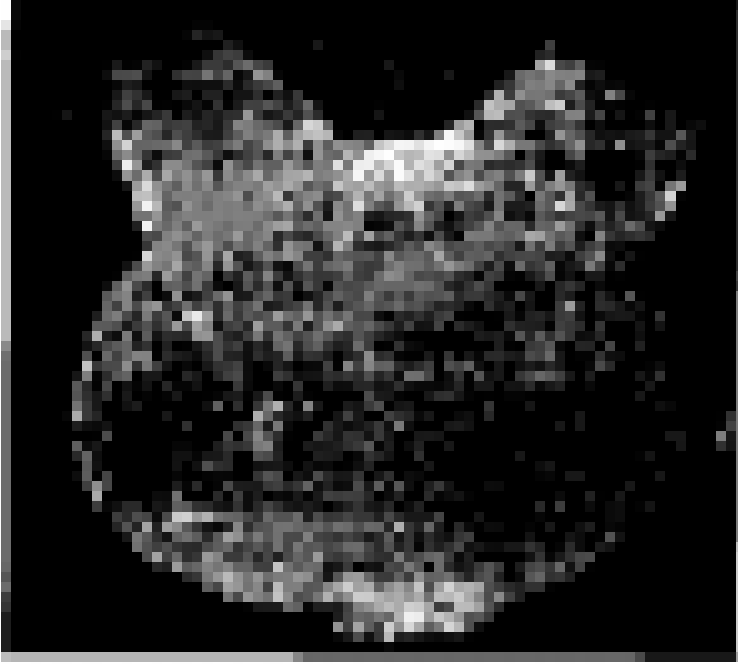
[Watch Video Solution](#)

76. Identify the animals given in picture and write feature of its phylum/class.



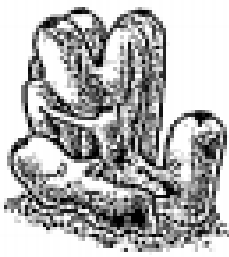
Watch Video Solution

77. Identify the animals given in picture and write feature of its phylum/class.

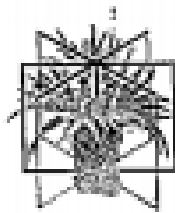


[Watch Video Solution](#)

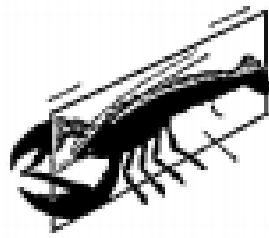
78. Observe and identify body symmetry of given animals.



Asymmetry



Radial



Bilateral

Types of Symmetry



Watch Video Solution

79. Differentiate between:

Open circulatory system and closed circulatory system.



Watch Video Solution

80. Differentiate between:

Oviparous and Viviparous characteristic.



Watch Video Solution

81. Differentiate between:

Direct development and Indirect development.



Watch Video Solution

82. Sort out the animals on the basis of their symmetry (radial or bilateral) coelenterates, ctenophores, annelids, arthropods, and echinoderms.



Watch Video Solution

83. There has been an increase in the number of chambers in heart during evolution of vertebrates. Give the name of the class of

vertebrates having two, three or four chambered heart.



[Watch Video Solution](#)

84. Fill up the blank spaces appropriately.

Phylum/Class	Excretory organ	Circulatory system	Respiratory organ
Arthropods			Lungs/gills/Tracheal system
	Nephredia	Closed	Skin/Parapodia
	Metanephridia	Open	
Amphibia		Closed	Lungs



[Watch Video Solution](#)

85. Match the following:

a. Amphibia	i) Air bladder
b. Mammals	ii) Cartilaginous notochord
c. Chondrichthyes	iii) Mammary glands
d. Ostichthyes	iv) Pneumatic bones
e. Cyclostomata	v) Dual habitat
f. Aves	vi) sucking and circular mouth without jaws.



Watch Video Solution

86. Endoparasites are found inside the host body. Mention the special structures,

possessed by these and which enables them to survive in those conditions.



[Watch Video Solution](#)

87. Match the following and write correct choice in space provided.

Animal	Characteristic
a. Pila	i) Jointed appendages
b. Cockroach	ii) Perching
c. Asterias	iii) Water vascular system
d. Torpedo	iv) Electric organ
e. Parrot	v) Presence of shell
f. Dog fish	vi) Placoid scales



[Watch Video Solution](#)

88. Differentiate between:

Open circulatory system and closed circulatory system.



Watch Video Solution

89. Differentiate between:

Oviparous and Viviparous characteristic.



Watch Video Solution

90. Differentiate between:

Direct development and Indirect development.



Watch Video Solution

91. Differentiate between:

Acoelomate and Pseudocoelomate



Watch Video Solution

92. Differentiate between:

Notochord and Nerve chord



[Watch Video Solution](#)

93. Differentiate between:

Polyp and Medusa



[Watch Video Solution](#)

94. Give the characteristic features of the following citing one example of each

Chondrichthyes and ostichthyes



[Watch Video Solution](#)

95. Give the characteristic features of the following citing one example of each
Urochordata and cephalochordata



Watch Video Solution

96. Aves and Mammalia



Watch Video Solution

97. Mention two similarities between

A frog and crocodile.



Watch Video Solution

98. Mention two similarities between

A turtle and pila.



Watch Video Solution

99. Name

A limbless animal



Watch Video Solution

100. Name

A cold blooded animal



Watch Video Solution

101. Name

A warm blooded animal



Watch Video Solution

102. Write one example each of the following

in the space provided.

Animal possessing dry and cornified

skin_____.



Watch Video Solution

103. Name

An animal having canal system and spicules



Watch Video Solution

104. Name

An animal with cnidoblasts



Watch Video Solution

105. Give an example for each of the following:

A viviparous animal



Watch Video Solution

106. Give an example of the following:

Fish possessing poison sting



Watch Video Solution

107. Give an example for each of the following:

A fish possessing an electric organ



Watch Video Solution

108. Give an example for each of the following:

An organ which regulates buoyancy



Watch Video Solution

109. Give an example for each of the following:

Animal, which exhibits alternation of generation



Watch Video Solution

110. Give an example for each of the following:

Oviparous animal with mammary gland.



Watch Video Solution

111. Excretory organs of different animals are given below. Choose, correctly .

Animal	Excretory organ/unit
a. Balanoglossus	i. Metanephridia
b. Leech	ii. Nephridia
c. Locust	iii. Flame cells
d. Liver fluke	iv. Absent
e. Sea urchin	v. Malpighian tubule
f. Pila	vi. Proboscis gland



[Watch Video Solution](#)

112. differentiate between chordates and non-chordates.



[Watch Video Solution](#)

113. What is the relationship between germinal, layers and the formation of body cavity in case of coelomate, acoelomates and pseudocoelomates?



Watch Video Solution

114. Comment upon the habitats and external features of animals belonging to class, amphibia and reptilla.



 [Watch Video Solution](#)

115. What are the difficulties that you would face in classification of animals, if common fundamental features are not taken into account?

 [Watch Video Solution](#)

116. If you are given a specimen, what are the steps that you would follow to classify it?

 [Watch Video Solution](#)

117. How useful is the study of the nature of body cavity and coelom in the classification of animals?



Watch Video Solution

118. Distinguish between intracellular and extracellular digestion?



Watch Video Solution

119. What is the difference between direct and indirect development?



Watch Video Solution

120. What are Platyhelminthes?



Watch Video Solution

121. What are the reasons that you can think of for the arthropods to constitute the largest

group of the animal kingdom?



[Watch Video Solution](#)

122. Water vascular system is the characteristic of which group.



[Watch Video Solution](#)

123. Vertebrates are Chordates but all Chordates are not Vertebrates.



[Watch Video Solution](#)

124. How important is the presence of air bladder in Pisces?



Watch Video Solution

125. What are the modifications that are observed in birds that help them fly?



Watch Video Solution

126. Could the number of eggs or young ones produced by an oviparous and viviparous mother be equal? Why?



Watch Video Solution

127. Segmentation in the body is first observed in which of the following

Platyhelminthes

Aschelminthes

Annelida

Arthropoda



Watch Video Solution

128. Match the following:

a) Operculum	i) Ctenophora
b) Parapodia	ii) Mollusca
c) Scales	iii) Porifera
d) Comb plates	iv) Reptilia
e) Radula	v) Annelida
f) Hairs	vi) Cyclostomata and Chondrichthyes
g) Choanocytes	vii) Mammalia
h) Gill slits	viii) Osteichthyes



Watch Video Solution

129. Prepare a list of some animals that are found parasitic on human beings.



Watch Video Solution