



BIOLOGY

BOOKS - TRUEMAN BIOLOGY

ANIMAL TISSUES

Multiple Choice Questions

1. Who established Histology as a separate branch of Zoology ?

- A. Marcello Malpighi
- B. Leeuwenhoek
- C. Robert Hooke
- D. Stanley

Answer: A



[Watch Video Solution](#)

2. From evolution point of view , the tissue which originated first was

- A. Connective tissue
- B. Epithelial tissues
- C. Muscular tissue
- D. Nervous tissue

Answer: B



[Watch Video Solution](#)

3. Cells lining the blood capillaries are called

- A. oxyntic cells
- B. endothelial cells

C. parietal cells

D. haemocytes .

Answer: B



Watch Video Solution

4. Stria vascularis is a special epithelium which

is present in

A. retina of eye

B. pinna of ear

C. cochlea of internal ear

D. nose

Answer: C



Watch Video Solution

5. The wall of coelom is formed of epithelium called

- A. columnar
- B. squamous
- C. glandular
- D. ciliated

Answer: B



[Watch Video Solution](#)

6. The cells of endothelium and mesothelium

becomes wavy and are called

- A. syncytial
- B. acellular
- C. tessellated
- D. polygonal

Answer: C



Watch Video Solution

7. Brush border is the peculiarity of

- A. syncytial cells
- B. nerve cells
- C. absorptive cells
- D. blood cells

Answer: C



Watch Video Solution

8. Glands in a vertebrate body may originate from

- A. ectoderm

B. mesoderm

C. ectoderm and endoderm

D. ectoderm, mesoderm and endoderm

Answer: D



[Watch Video Solution](#)

9. Presence of extracellular basement membrane is the peculiarity of

A. epithelial tissue

B. connective tissue

C. Nervous tissue

D. muscular tissue

Answer: A



[Watch Video Solution](#)

10. The epithelium found in the lining layer of stomach and intestine is

A. 1)columnar

B. 2)squamous

C. 3)stratified

D. 4)pseudostratified

Answer: A



Watch Video Solution

11. Endothelium lining a blood vessel is formed of

A. ciliated epithelium

B. columnar epithelium

C. cuboidal epithelium

D. simple squamous epithelium

Answer: D



[Watch Video Solution](#)

12. Germinal Epithelium of ovary is formed of : -

- A. columnar epithelium
- B. squamous epithelium
- C. cuboidal epithelium
- D. stratified epithelium

Answer: C



[Watch Video Solution](#)

13. Epithelium forming the inner layer of urinary bladder is

- A. simple squamous

B. transitional

C. simple columnar

D. neurosensory

Answer: B



Watch Video Solution

14. which of the following is a holocrine secretion ?

A. Mammary glands

B. Sebaceous

C. Pancreas

D. Sweat glands

Answer: B



Watch Video Solution

15. In which portion of uriniferous tubule, (nephron) the lumen is lined with brush-border microvilli ?

- A. Proximal convoluted tubule
- B. Distal tubule
- C. Collecting tubule
- D. Loop of Henle

Answer: A



[Watch Video Solution](#)

16. Zymogen cells are found in

- A. stomach
- B. brain
- C. kidney
- D. liver

Answer: A



[Watch Video Solution](#)

17. True coelom is covered by

- A. ectoderm
- B. endoderm
- C. mesoderm
- D. both (1) and (2)

Answer: C



[Watch Video Solution](#)

18. Nonkeratinised stratified squamous epithelium is found in

- A. epidermis of skin of land vertebrates .

B. oral cavity and pharynx

C. vagina and cervix

D. both (2) and (3)

Answer: D



[Watch Video Solution](#)

19. Salivary glands are

A. merocrine

B. apocrine

C. holocrine

D. heterocrine

Answer: A



[Watch Video Solution](#)

20. Fibrous tissue which connects bones is

- A. 1)tendon
- B. 2)adipose tissue
- C. 3)ligament
- D. 4)connective tissue

Answer: C



[Watch Video Solution](#)

21. Which tissue is widely distributed in the body

and also forms most of the parts of body ?

- A. Connective tissue
- B. Muscular tissue
- C. Nervous tissue
- D. Epithelial tissue

Answer: A



[Watch Video Solution](#)

22. Collagen fibres are found maximum in

A. ligaments

B. tendons

C. bone

D. cartilage

Answer: B



[Watch Video Solution](#)

23. Plasma cells synthesize

A. yellow elastic tissue

B. hormones

C. mucus

D. antibodies

Answer: D



Watch Video Solution

24. Pericardium of heart is composed of

A. Yellow elastic tissue

B. white fibrous tissue

C. reticular tissue

D. areolar tissue

Answer: B



Watch Video Solution

25. Tendons connect

- A. nerve to muscle
- B. muscle to muscle
- C. bone to bone
- D. bone to muscle

Answer: D



[Watch Video Solution](#)

26. The vermiform appendix is made up of

- A. 1) digestive tissue
- B. 2) respiratory tissue
- C. 3) excretory tissue
- D. 4) lymphatic tissue

Answer: D



Watch Video Solution

27. The commonest cartilage to ossify is

- A. hyaline
- B. elastic
- C. fibrous
- D. fibroelastic

Answer: A



Watch Video Solution

28. Mast cells found in areolar tissue secrete

- A. serotonin

- B. heparin
- C. histamine
- D. all of these

Answer: D

 [Watch Video Solution](#)

29. Areolar connective tissue joins

- A. bone with bone
- B. fat body with muscles
- C. integument with muscles
- D. bone with muscles

Answer: C

 [Watch Video Solution](#)

30. Elastic cartilage is found in

- A. the auditory tube, larynx and pinnae of mammals
- B. the trachea
- C. spinal cord
- D. intervertebral discs

Answer: A



[Watch Video Solution](#)

31. Which is the strongest cartilage ?

- A. Fibrous cartilage
- B. Elastic cartilage
- C. Cartilage of pinna
- D. Hyaline cartilage

Answer: A



Watch Video Solution

32. Hyoid apparatus contains

- A. hyaline cartilage
- B. fibrous cartilage
- C. calcified cartilage
- D. elastic cartilage

Answer: A



Watch Video Solution

33. Intervertebral discs are composed of

- A. hyaline cartilage

B. elastic cartilage

C. fibrous cartilage

D. none of these

Answer: C



[Watch Video Solution](#)

34. The ends of the bones of limbs are composed of which cartilage ?

A. Fibrous

B. Hyaline

C. Elastic

D. Calcified

Answer: B



[Watch Video Solution](#)

35. Which salt is found in maximum quantity in bones ?

- A. Calcium carbonate
- B. Calcium phosphate
- C. Sodium chloride
- D. Magnesium chloride

Answer: B



[Watch Video Solution](#)

36. If bone is kept for three days in 10% KOH sol,

it will

- A. be unaffected
- B. dissolve
- C. soften
- D. break

Answer: A



[Watch Video Solution](#)

37. The cells responsible for the resorption of bone matrix during the growth and remodeling of the skeleton are called

- A. Osteocytes
- B. Osteoblasts
- C. Osteoclasts
- D. osteons

Answer: C



[Watch Video Solution](#)

38. Bone forming cells are

A. osteoblasts

B. osteoclasts

C. chondroclasts

D. chondroblasts

Answer: A



Watch Video Solution

39. The bone of mammal contains longitudinal

Haversian canals which are connected by

transverse canals , known as

A. Semi-circular canals

B. Volkman's canals

C. Inguinal canal

D. Bidder's canals

Answer: B



Watch Video Solution

40. The bones marrow is composed of

- A. muscle fibres and adipose tissue
- B. areolar tissue and adipose tissue
- C. adipose tissue and calcified cartilage
- D. adipose tissue, areolar tissue and blood vessels .

Answer: D



Watch Video Solution

41. Largest erythrocytes are found in

- A. man and monkey

B. fish and frog

C. Amphiuma and Proteus

D. lizard and snake

Answer: C



Watch Video Solution

42. Normally haematopoiesis in frog occurs in

A. liver and bone marrow

B. liver

C. spleen

D. bone marrow

Answer: A



Watch Video Solution

43. Which of the following has longest life in blood ?

- A. 1)Eosinophil
- B. 2)Neutrophil
- C. 3)RBC
- D. 4)Basophil

Answer: C



[Watch Video Solution](#)

44. What is the main difference in human and frog RBCs?

- A. Human RBC are nonnucleated
- B. Hemoglobin is found only in human RBC
- C. Human RBC have nucleus
- D. Human RBC are multinucleate

Answer: A



Watch Video Solution

45. ___ play an important role in blood clotting

- A. Plasma
- B. RBC
- C. WBC
- D. Thrombocytes

Answer: D



Watch Video Solution

46. In normal healthy female , the number of RBC/ mm^3 of blood is

- A. 6.5-7.0 million

B. 5.5-6.0 million

C. 4.5-5.0 million

D. 3.5-4.0 million

Answer: C



Watch Video Solution

47. Blood clotting occurs with the help of

A. prothrombin

B. calcium ions

C. fibrinogen

D. all of these

Answer: D



Watch Video Solution

48. Concave surface of mammalian RBCs is helpful in

- A. forming of more haemoglobin
- B. increasing surface area of RBCs
- C. reducing surface tension of plasma membrane.
- D. providing more space for haemoglobin

Answer: B



Watch Video Solution

49. Which of the following is an anticoagulant and checks blood coagulation in blood vessels?

- A. prothrombin
- B. Globulin
- C. Thromboplastin
- D. Heparin

Answer: D



Watch Video Solution

50. Vitamin K is required for

- A. formation of thromboplastin
- B. conversion of fibrinogen to fibrin
- C. conversion of prothrombin to thrombin
- D. synthesis of prothrombin

Answer: D



Watch Video Solution

51. Ratio of RBCs and WBCs in human being is

- A. 300 : 1

B. 500: 3

C. 7: 4

D. 600: 1

Answer: D



Watch Video Solution

52. pH of human blood is

A. 6.4

B. 7.4

C. 8.4

D. 5.4

Answer: B



Watch Video Solution

53. Spindle cells are found in the blood of

- A. mammals
- B. fishes and amphibians
- C. reptiles and birds
- D. both (2) and (3)

Answer: D



Watch Video Solution

54. Cartilage is

- A. nonvascular
- B. poorly vascular
- C. highly vascular
- D. none of these

Answer: A



[Watch Video Solution](#)

55. Myofibrils show dark and light bands is

- A. striped muscles
- B. cardiac muscles
- C. unstripped muscles
- D. both (1) and (2)

Answer: D



[Watch Video Solution](#)

56. Cardiac muscle is structurally different from

Smooth muscle because it

- A. is branched
- B. is involuntary
- C. has a single nucleus
- D. does not fatigue.

Answer: A

 [Watch Video Solution](#)

57. Nerve cells do not divide because they do not have

- A. nucleus
- B. golgi body
- C. centrosome
- D. mitochondria

Answer: C

 [Watch Video Solution](#)

58. Structurally olfactory cells are

- A. Bipolar neurons
- B. Unipolar neurons
- C. Multipolar neurons
- D. Neurochemically specialized neurons

Answer: A



Watch Video Solution

59. Cartilage present in trachea , larynx and bronchi is

- A. Hyaline
- B. Fibrous
- C. Elastic

D. Calcified

Answer: A



Watch Video Solution

60. Striated muscles contract because of

- A. sliding of myosin rods on actin rods
- B. sliding of actin rods on myosin rods
- C. actin rods coming close to each other
- D. myosin rods coming close to each other

Answer: B



Watch Video Solution

61. A bonds and / bands are found in

- A. voluntary muscles
- B. involuntary muscles
- C. unstriated muscles
- D. striated muscles

Answer: D

 [Watch Video Solution](#)

62. Sarcolemma is a membrane found over in

- A. nerve fibra
- B. cardiac muscles
- C. muscular fibre
- D. heart

Answer: C

 [Watch Video Solution](#)

63. Sarcomere is the area between two

- A. H zones
- B. Z lines
- C. A bands
- D. I bands

Answer: B



Watch Video Solution

64. Smooth muscles are

- A. involuntary, spindle shaped , uninucleated , tapering
- B. voluntary, multinucleate, cylindrical
- C. involuntary , cylindrical , multinucleate

D. voluntary , branched, uninucleate .

Answer: A



[Watch Video Solution](#)

65. Cardiac muscles contract

- A. quickly and they fatigue
- B. rhythmically and are unfatigued
- C. slowly and are not fatigued
- D. slowly and they fatigue.

Answer: B



[Watch Video Solution](#)

66. Large number of mitochondria are found in

- A. thigh muscle
- B. cardiac muscles
- C. breast bone of bird .
- D. all of the above

Answer: B

 [Watch Video Solution](#)

67. Which ion is essential for muscle contraction ?

- A. Na^+
- B. K^+
- C. Mg^+
- D. Ca^+

Answer: D

 [Watch Video Solution](#)

68. Muscles get fatigued due to accumulation of

A. adenosin triphosphate

B. CO_2

C. lactic acid

D. phosphate molecules

Answer: C



Watch Video Solution

69. The sarcomes is structural and functional

unit of a muscle fibre and comprises

A. A bond and I bond

B. A bond and half of each adjacent I bond

C. A bond and half I bond

D. Half A band and complete I band

Answer: B



[Watch Video Solution](#)

70. Strongest muscles in human body are found in

A. jaws

B. thighs

C. neck

D. hands

Answer: A



[Watch Video Solution](#)

71. Where would you find oblique cross connections forming a contractile network of fibers and intercalated discs?

- A. striated muscle
- B. unstriated muscle
- C. cardiac muscle
- D. radial muscle

Answer: C



[Watch Video Solution](#)

72. Skeletal muscles are attached to bones except in

- A. jaw and nose
- B. nose and pinnae
- C. tongue and oesophagus
- D. pinnae and nose

Answer: C



Watch Video Solution

73. Iris muscles of eye are formed from

- A. mesoderm
- B. endoderm
- C. ectoderm
- D. both (1) and (2)

Answer: C



Watch Video Solution

74. Nodes of Ranvier are found in

- A. cyton

B. nephrons

C. axon

D. telondendria

Answer: C



Watch Video Solution

75. Each nerve fibre in a nerve is surrounded by a layer of connective tissue , known as

A. epineurium

B. perineurium

C. endoneurium

D. exoneurium

Answer: C



Watch Video Solution

76. Chemical substance secreted at the synapse and helpful in passing impulse from neuron through a gap is

- A. Acetylcholine
- B. ATP
- C. Cholecystokinin
- D. Cholesterol

Answer: A



[Watch Video Solution](#)

77. Schwann's Cells and Nodes of Ranvier are found in

- A. Neurons
- B. Osteoblasts

C. Chondroblasts

D. Gland cells

Answer: A



Watch Video Solution

78. Nissl's granules are irregular masses of ribosomes and RER and are characteristically found in

A. nerve cells

B. mast cells

C. bone cells (osteocytes)

D. cartilage cells (chondrocytes)

Answer: A



Watch Video Solution

79. Neurosecretory cells secrete

- A. enzymes
- B. releasing factors
- C. mucus
- D. sweat

Answer: B



Watch Video Solution

80. Ependymal cells are found in the

- A. 1)ventricles of brain
- B. 2)central canal of spinal cord
- C. 3)retina of eye
- D. 4)both (1) and (2)

Answer: D



Watch Video Solution

81. In the central neural system, medullated nerve fibres form

- A. white matter
- B. grey matter
- C. interneurons
- D. neurons

Answer: A



Watch Video Solution

82. Nodes of Ranvier are

- A. areas of swellings of axons

B. areas where myelin sheath of nerve touches the axon

C. nodes formed in skeletal muscles

D. areas found in the stomach wall.

Answer: B



[Watch Video Solution](#)

83. Neuroglia cells are

A. astrocytes

B. oligodendrocytes

C. microglia

D. all of these

Answer: D



[Watch Video Solution](#)

84. Collateral fibres are given out along its way in

- A. muscle fibre
- B. axon
- C. dendron
- D. edendrites

Answer: B



Watch Video Solution

85. Myelin sheath is made up of phospholipids

and is present around the

- A. non-medullated nerve fibre
- B. medullated nerve fibre
- C. medullated and non-medullated nerve fibres
- D. muscle fibres

Answer: B



Watch Video Solution

86. Unipolar neurons are present in

- A. central nervous system
- B. peripheral nervous system
- C. autonomic nervous system
- D. neural system of embryo

Answer: D



Watch Video Solution

87. Bipolar nerve cells are present in

- A. skin tactile corpuscles

B. spinal cord

C. retina of eye

D. all of the above

Answer: C



Watch Video Solution

88. Multipolar nerve cells are present in

A. cochlea

B. dorsal root ganglia of spinal cord

C. retina of eye

D. brain

Answer: D



Watch Video Solution

89. Neurosecretory cells are found in of the brain

- A. Medulla oblongate
- B. Olfactory lobes
- C. Hypothalamus
- D. Pons varolii

Answer: C



Watch Video Solution

90. Myelin sheath in CNS is synthesized by

- A. oligodendrocytes
- B. Schwann cells
- C. microglia
- D. all of these

Answer: A



Watch Video Solution

91. Nissl's granules are absent in

- A. Dendrons and dendrites
- B. Cyton
- C. axon
- D. Dendrons and cyton

Answer: C



Watch Video Solution

92. The term tissue was given by

- A. 1)Mayer

B. 2)Bichat

C. 3)Malpighi

D. 4)Hertwig

Answer: B



Watch Video Solution

93. Reticular cells are

A. secretory

B. respiratory

C. excretory

D. phagocytic

Answer: D



Watch Video Solution

94. A Haversian canal with its surrounding lamellae and osteocytes constitutes a cylindrical unit of bone called

- A. periosteum
- B. endosteum
- C. osteon
- D. haversian

Answer: C



Watch Video Solution

95. In Camel, erythrocytes are

- A. circular, biconcave , non-nucleated
- B. oval and nucleated
- C. circular, biconcave and nucleated
- D. oval and non-nucleated

Answer: D



[Watch Video Solution](#)

96. In embryonic stage erythrocytes develop from

- A. bone marrow
- B. liver and kidney
- C. spleen and kidney
- D. liver and spleen

Answer: D



[Watch Video Solution](#)

97. Bone marrow occurs in

- A. ribs and sternum

B. ribs, sternum and cranial bones

C. ribs and cranial bones

D. only ribs

Answer: B



Watch Video Solution

98. Life span of human white blood corpuscles is

A. 24 hours

B. less then 10 days

C. 120 days

D. 100 hours

Answer: B



Watch Video Solution

99. Which one is a factor for maturation of erythrocytes ?

A. Vitamin B 12

B. Vitamin A

C. Vitamin D

D. Vitamin C

Answer: A



Watch Video Solution

100. The main cause of anaemia is

A. deficiency of Ca

B. deficiency of Fe

C. deficiency of Na

D. deficiency of Mg

Answer: B

 [Watch Video Solution](#)

101. Which one is the principal cation in the plasma of blood ?

- A. Calcium
- B. Sodium
- C. Potassium
- D. Magnesium

Answer: B

 [Watch Video Solution](#)

102. Match column *I* with column *II* and select the correct option from the codes given below

Column I

Column II

- | | | |
|----------------------|-------|----------------------------------------------|
| A. Simple columnar | (i) | Wall of heart epithelium |
| B. Cardiac muscle | (ii) | Bone joints |
| C. Adipose tissue | (iii) | Inner lining of stomach and intestine |
| D. Hyaline cartilage | (iv) | Below the skin, in the abdomen, buttocks, th |
| | (v) | Diaphragm |

A. A = r, B = t, C = q, D = s

B. A = r, B = p, C = s, D = q

C. A = r, B = p, C = t, D = s

D. A = p, B = r, C = s, D = t

Answer: B



Watch Video Solution

103. Match the columns

Column I

Column II

- | | | | |
|----------|------------------|----------|-------------|
| <i>a</i> | Harversian Canal | <i>p</i> | Kidney |
| <i>b</i> | Dendrites | <i>q</i> | Cartilage |
| <i>c</i> | Sarcolemma | <i>r</i> | Muscle |
| <i>d</i> | Chondrocytes | <i>s</i> | Nerve cells |
| — | — | <i>t</i> | Bone |

A. 1) $A = p, B = r, C = s, D = t$

B. 2) $A = q, B = r, C = s, D = t$

C. 3) $A = s, B = t, C = q, D = r$

D. 4) $A = t, B = s, C = r, D = q$

Answer: D

 [Watch Video Solution](#)

104. Bone marrow is absent in

A. fish

B. birds

C. reptiles

D. frog

Answer: B

 [Watch Video Solution](#)

105. Which of the following statements is correct

for node of Ranvier of nerve ?

- A. 1) Neurilemma is discontinuous
- B. 2) Myelin sheath is discontinuous
- C. 3) Both neurilemma and myelin sheath are discontinuous
- D. 4) covered by Myelin sheath

Answer: C



Watch Video Solution

106. What will happen if ligaments are cut or broken :-

- A. Bones will move freely at joints
- B. No movement at joint
- C. Bone will becomes unfix

D. Bone will becomes fixed

Answer: A



[Watch Video Solution](#)

107. Which is used as anticoagulant in blood-cell counting ?

A. CH_3COOH

B. H-CHO

C. $EDTA^*$

D. C_6H_6

Answer: C



[Watch Video Solution](#)

108. Which one of the following contains the largest quantity of extracellular material ?

- A. Stratified muscle
- B. Areolar tissue
- C. Stratified epithelium
- D. Myelinated nerve fibres

Answer: B



Watch Video Solution

109. Adjacent cells are interconnected by

- A. desmosomes
- B. vacuoles
- C. mitochondria
- D. E.R.

Answer: A



[Watch Video Solution](#)

110. Find out the wrongly matched pair

- A. Squamous - Skin of frog
epithelium
- B. Columnar - Peritoneum
epithelium body cavity
- C. Ciliated - Bronchioles
epithelium
- D. Stratified - cuboidal
epithelium

Answer: B



[Watch Video Solution](#)

111. Which one of the following pairs of structures distinguishes a nerve cell from other types of cell

A. Flagellum and medullary sheath

B. Nucleus and mitochondria

C. Perikaryon and dendrites

D. Vacuoles and fibres

Answer: C



[Watch Video Solution](#)

112. In a vertebrate which germ layer forms the skeletal muscles ?

A. ectoderm

B. endoderm

C. mesoderm

D. both (1) and (2)

Answer: C



[Watch Video Solution](#)

113. Largest muscle in the human body is

A. sartorius

B. gluteus

C. stapedius

D. masseter

Answer: B



Watch Video Solution

114. The most abundant type of WBCs (granulocytes)

in human blood are

A. Basophils

B. Neutrophils

C. Monocytes

D. Eosinophils

Answer: B



Watch Video Solution

115. Platelets are formed from the

A. erythropoietin

B. osteoclasts

C. megakaryocytes

D. melanocytes

Answer: C



Watch Video Solution

116. Select a unicellular gland

- A. goblet cell
- B. gastric gland
- C. chromophil cell
- D. chloragogen cell

Answer: A

 [Watch Video Solution](#)

117. An embryonic connective tissue is

- A. Wolmen's jelly
- B. Wright's jelly
- C. Whartons's jelly
- D. none of these

Answer: C

 [Watch Video Solution](#)

118. Short life span is of

- A. Lymphocytes
- B. Monocytes
- C. Basophils
- D. Neutrophils

Answer: D



Watch Video Solution

119. Haversian canal is found in

- A. epiphysis of femur of mammals
- B. diaphysis of humerus of mammals
- C. internal ear of mammals

D. obturator foramen

Answer: A



[Watch Video Solution](#)

120. Metals required in synthesis of haemoglobin are

A. iron

B. copper

C. cobalt

D. all of these

Answer: D



[Watch Video Solution](#)

121. Which cell is called 'meduse cell' ?

A. lymphocyte

B. eosinophil

C. Basophils

D. neutrophil

Answer: B



[Watch Video Solution](#)

122. Sarcolemma is absent in Muscle fibres

A. skeletal

B. smooth

C. cardiac

D. both (2) and (3)

Answer: D



[Watch Video Solution](#)

123. Neruolimma is

- A. cell membrane of neuron
- B. plasma membrane of axon
- C. cytoplasm of nerve cell
- D. cytoplasm of Schwann's cell

Answer: D



Watch Video Solution

124. Phagocytic cells present in brain are

- A. Kupffer cells
- B. monocytes
- C. microglia

D. macrophages

Answer: C



[Watch Video Solution](#)

125. Target organ of *Mycobacterium leprae*

A. Medullary sheath

B. Presynaptic nodes

C. motor end plates

D. Schwann cells

Answer: D



[Watch Video Solution](#)

126. The middle man of the body is

A. Plasma

B. Lymph

C. WBC

D. RBC

Answer: B



[Watch Video Solution](#)

127. In a bone, concentric layers of matrix are called

A. Haversian canals

B. Volkman's canals

C. lacunae

D. lamellae

Answer: D



[Watch Video Solution](#)

128. Wrinkles in old age due to

- A. myosin fibres
- B. actin fibres
- C. collagen fibres
- D. none

Answer: C



Watch Video Solution

129. Which are not true cells in the blood?

- A. Platelets
- B. Monocytes
- C. Neutrophils

D. Basophils

Answer: A



Watch Video Solution

130. Which of the following coagulating factor of blood is hypothetical ?

- A. Accelerin (VI)
- B. Christmas factor (IX)
- C. Stuart - Power factor (X)
- D. Fibrin stabilizing factor (XII)

Answer: A



Watch Video Solution

131. Which of the following is not Spongy or cancellous bone

A. skull bones

B. vertebrae

C. femur

D. ribs

Answer: A



Watch Video Solution

132. The condition in which the potassium levels in increased is known as

A. osteomalacia

B. hyperkalaemia

C. hyperexcitability

D. hypercholesterolaemia

Answer: B



[Watch Video Solution](#)

133. Microglia are in origin

- A. endodermal
- B. mesodermal
- C. endodermal
- D. both (1) and (3)

Answer: B



[Watch Video Solution](#)

134. Apocrine secretion of gland means

A. when the product is released the cell

remains intact

B. entire contents of cell is discharged with

the destruction of cell

C. when part of apical cytoplasm is lost

D. none of these

Answer: C



Watch Video Solution

135. Red bone marrow occurs in membranous

bones such as

A. all flat bones of skull , vertebrae, sternum and ribs

B. only in centrum of vertebrae

C. only in centrum of vertebrae are skull

D. non of these

Answer: A



Watch Video Solution

136. Schneiderian epithelium is found in

A. nasal passage

B. trachea

C. retina

D. Bowman's capsule

Answer: A



Watch Video Solution

137. Polycythemia refers to an abnormal increase in the number of

A. eosinophils

B. lymphocytes

C. plasma cells

D. erythrocytes

Answer: D



Watch Video Solution

138. The bundles of nerves fibres are called

A. fasciculi

B. epineurium

C. perineurium

D. neurilemma

Answer: A



Watch Video Solution

139. Processes from osteoblasts are found in

- A. lamella
- B. canaliculi
- C. dendrites
- D. Haversian canals

Answer: B



Watch Video Solution

140. The most abundant kind of cartilage in the body is

- A. elastic cartilage
- B. fibro cartilage
- C. hyaline cartilage

D. none of these

Answer: C



Watch Video Solution

141. The softest tissue in the body is

A. nerve

B. muscle

C. blood

D. skin

Answer: C



Watch Video Solution

142. The main difference between white and yellow fibres is of

- A. protein
- B. colour of fibres
- C. both (1) and (2)
- D. none of these

Answer: C

 [Watch Video Solution](#)

143. Cardiac muscles are

- (a) striated (b) nonstriated
 - (c) voluntary (d) involuntary
-
- A. a and c are correct
 - B. b and d are correct
 - C. a and d are correct
 - D. a, b and c are correct

Answer: C



[Watch Video Solution](#)

144. Which of the following statements is true for lymph ?

- A. WBCs and serum
- B. RBCs, WBCs and plasma
- C. RBCs proteins and platelets
- D. All components of blood except RBCs
and some proteins

Answer: D



[Watch Video Solution](#)

145. The largest RBCs have been seen in

A. man and monkey

B. Whale

C. Amphibia

D. Elephant

Answer: C



Watch Video Solution

146. Mark the odd one out

A. Monocytes

B. Neutrophils

C. Lymphocytes

D. Erythrocytes

Answer: D



Watch Video Solution

147. Pernicious anaemia is due to the deficiency of

- A. iron
- B. cobalamin
- C. calciferol
- D. phylloquinone

Answer: B



Watch Video Solution

148. The type of tissue lining the nasal passage ,
bronchioles and Fallopian tubes is

- A. columnar ciliated epithelium
- B. cuboidal epithelium
- C. neurosensory epithelium

D. germinal epithelium

Answer: A



[Watch Video Solution](#)

149. Ligament is mainly formed by

A. reticulin

B. elastin

C. mysoin

D. collagen

Answer: B



[Watch Video Solution](#)

150. Action potential is generated by

A. Na^+

B. K^+

C. Ca^+

D. Cl^-

Answer: A



Watch Video Solution

151. Which is immortal?

A. Plasma cell

B. Germ cell

C. Brain cell

D. Kidney cell

Answer: B



Watch Video Solution

152. Leukocytes can squeeze out of blood capillaries. This process is called

- A. leucocytosis
- B. thrombopoiesis
- C. diapedesis
- D. haemopoiesis

Answer: C



Watch Video Solution

153. Keratinized dead layer of skin is made of

- A. stratified squamous
- B. simple cuboidal
- C. simple columnar

D. stratified columnar

Answer: A



[Watch Video Solution](#)

154. The haemoglobin of a human foetus

- A. has only two protein subunits instead of four
- B. has a lower affinity for oxygen than that
of an adult
- C. its affinity for oxygen is the same as that of an adult
- D. has a higher affinity for oxygen than that
of an adult

Answer: D



[Watch Video Solution](#)

155. Which type of white blood cells are concerned with the release of histamine and the natural anticoagulant heparin?

- A. Baseophils
- B. monocytes
- C. Neutrophils
- D. Eosinophils

Answer: A



[Watch Video Solution](#)

156. The most active phagocytic white blood cells are

- A. neutrophils and monocytes
- B. neutrophils and eosinophils
- C. eosinophils and lymphocytes
- D. lymphocytes and macrophages

Answer: A



Watch Video Solution

157. Debove's membrane is a layer of

- A. muscular tissue
- B. epithelial tissue
- C. connective tissue
- D. all of these

Answer: C



Watch Video Solution

158. Notochord, skeletal system and dermis of the skin are the derivatives of

- A. endoderm
- B. ectoderm
- C. mesoderm
- D. all the three layers

Answer: C

 [Watch Video Solution](#)

159. Curved portion of Henle's loop is lined by

- A. columnar epithelium
- B. squamous epithelium
- C. ciliated epithelium
- D. cuboidal epithelium

Answer: D

 [Watch Video Solution](#)

160. Which of the following groups consists of organs having innermost lining of Columnner epithelium ?

- A. Stomach, Fallopiian tube, lung ,alveoli
- B. Gall bladder, stomach, artery
- C. Intestine, gastric gland , gall bladder
- D. Gastric gland, pancreatic duct , veins

Answer: C



Watch Video Solution

161. In thyroid follicle which type of epithelial tissue is present ?

- A. Squamous

B. Cuboidal

C. Transitional

D. Columnar

Answer: B



Watch Video Solution

162. Which of the following statements is true ?

A. Saltatory conduction is seen in non-myelinated nerve fibres

B. Nissl's granules are found in muscle fibres

C. Non-myelinated nerve fibres do not possess

nodes of Ranvier

D. Non-myelinated nerve fibres are

completely enclosed by myelin sheath

Answer: C



[Watch Video Solution](#)

163. Identify the correctly matched pair/pairs of the germ layers and their derivatives.

- A. Ectoderm-Epidermis
- B. Endoderm-Dermis
- C. Mesoderm-Muscles
- D. Mesoderm-Notochord
- E. Endoderm-Enamel of teeth

- A. A and D only
- B. A and B only
- C. A, C and D only
- D. A, B , C and E only

Answer: C



[Watch Video Solution](#)

164. The size of pupil is controlled by the

- A. ciliary muscles
- B. suspensory ligaments
- C. cornea
- D. iris muscles

Answer: A



Watch Video Solution

165. Skeletal muscles are controlled by

- A. sympathetic nerves
- B. parasympathetic nerves
- C. somatic nerves
- D. autonomic nerves

Answer: C



Watch Video Solution

166. In the matrix lies the bone cells, called

Or

Cells that maintain marrow cells are called

A. osteocytes

B. chondrocytes

C. osteoclasts

D. none of these

Answer: A



Watch Video Solution

167. Match the columns :

Column I	Column II
1. Cuboidal	(a) Epidermis of skin
2. Ciliated	(b) Inner lining of blood vessels
3. Columnar	(c) Inner surface of gall bladder
4. Squamous	(d) Inner lining of fallopian tube
5. Keratinized	(e) Lining of pancreatic duct

A. 1-E, 2-D, 3-C, 4-B, 5-A

B. 1-C, 2-D, 3-E, 4-B, 5-A

C. 1-C, 2-D, 3-C, 4-B, 5-A

D. 1-C, 2-D, 3-E, 4-A, 5-B

Answer: C



Watch Video Solution

168. Myelin of nerve fibres of CNS is produced and maintained by

A. oligodendrocytes

B. astrocytes

C. microglia

D. Schwann cells

Answer: D



Watch Video Solution

169. The type of connective tissue that is associated with the umbilical cord is

A. areolar connective tissue

B. jelly-like connective tissue

C. adipose connective tissue

D. reticular connective tissue

Answer: B



Watch Video Solution

170. Note the following (A) It forms the lining of the cavities of

alveoli of the lungs

(B) it forms the lining of wet surfaces like

buccal cavity and oesophagus

(C) it occurs in the ducts of sweat glands

(D) it forms the lining of salivary glands and

sweat glands

(E) it is a loose connective tissue

Which of the above are associated with stratified simple epithelial tissue ?

A. A and D

B. B and C

C. C and A

D. D and E

Answer: A



Watch Video Solution

171. The wall of the internal organs such as blood vessels, stomach and intestine contains which type of muscle tissue?

- A. Smooth muscle fibre
- B. cardiac muscle Fibre
- C. Skeletal muscle fibre
- D. Neural tissue

Answer: A



[Watch Video Solution](#)

172. The matrix of bone and cartilage can be distinguished by the presence of

- A. haversian canal
- B. lacuna

C. chromatophores

D. adipose cells

Answer: A



[Watch Video Solution](#)

173. Multi-lobed nucleus and granular cytoplasm are characteristics of which of the WBCs

A. neutrophils

B. monocytes

C. lymphocytes

D. eosinophils

Answer: A



[Watch Video Solution](#)

174. In human brain, number of glial cells is

- A. is significantly greater than number of neurons
- B. is significantly lower than the neurons
- C. roughly equals the number of Schwann cell
- D. roughly equals the number of neurons

Answer: D



[Watch Video Solution](#)

175. Which type of epithelium is involved in a function to move particles or mucus in specific direction

- A. ciliated epithelium
- B. columnar epithelium
- C. Squamous epithelium
- D. cuboidal epithelium

Answer: A



[Watch Video Solution](#)

176. The cells lining the blood vessels belongs to the category of :

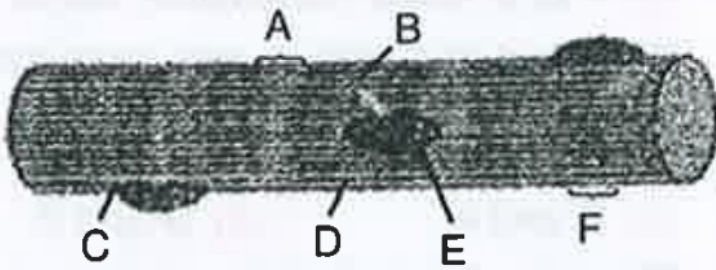
- A. Connective tissue
- B. smooth muscle tissue
- C. Squamous epithelium
- D. columnar epithelium

Answer: C



[Watch Video Solution](#)

177. The diagram given below represents the histology of a stripped muscle . Label the parts A, B, C, D, E and F.



A. A - Sarcoplasm , B - Nucleus , C - Sarcolemma , D - Myofibril , E- Dark band , F -

light band .

B. A - Sarcoplasm , B - Light band , C - Myofibril ,

fibril, D - Sarcoemma, E - nucleus , F - Dark band

C. A - Light band , B - Sarcoplasm , C - Myofibril, D - Sarcolemma, E -

Nucleus , F - Dark band

D. A - Sarcolemma, B - Nucleus , C -Dark

band , D. - Light band , E - Sarcoplasm , F

- myofibril

Answer: C



Watch Video Solution

178. The non-keratinized stratified squamous epithelium is present in

- A. epidermis of skin of hand and vertebrate
- B. vagina and cervix
- C. oral cavity
- D. vagina, cervix and oral cavity

Answer: D



Watch Video Solution

179. People who have migrated from the plains to an area adjoining
Rohtang pass about six months back

- A. have more RBCs and their haemoglobin

has a lower binding affinity to O_2 .

B. are not physically fit to play games like

football

C. suffer from altitude sickness with symptoms like nausea, fatigue ,

etc .

D. have the usual RBC count but their haemoglobin has very high

binding affinity

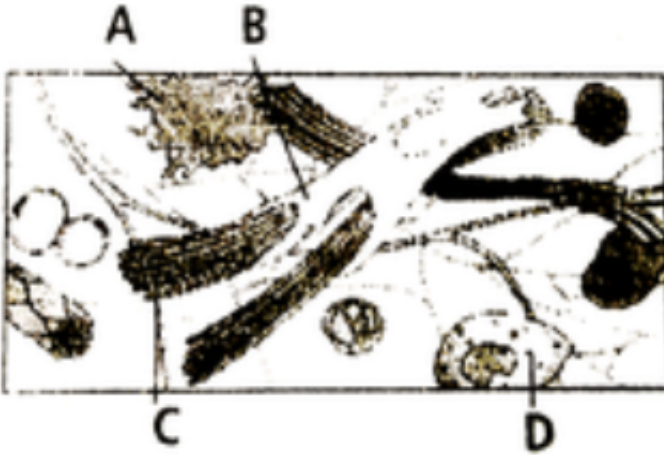
Answer: A



Watch Video Solution

180. Given below is the diagrammatic sketch of a certain type of connective tissue. Identify the parts labelled A, B, C and D and select the

right option about them



- | | | | | |
|----|-----------------|----------------------|------------|-------------------------|
| | <i>A</i> | <i>B</i> | <i>C</i> | <i>D</i> |
| A. | Macro-
phage | Fibroblast
fibres | Collagen | Mast
cell |
| | <i>A</i> | <i>B</i> | <i>C</i> | <i>D</i> |
| B. | Mast
cell | Macro-
phage | Fibroblast | Coll-
agen
fibres |
| | <i>A</i> | <i>B</i> | <i>C</i> | <i>D</i> |
| C. | Mast
phage | Collagen
fibres | Fibroblast | Mast
cell |
| | <i>A</i> | <i>B</i> | <i>C</i> | <i>D</i> |
| D. | Mast
cell | Collagen
fibres | Fibroblast | Macro-
phage |

Answer: A

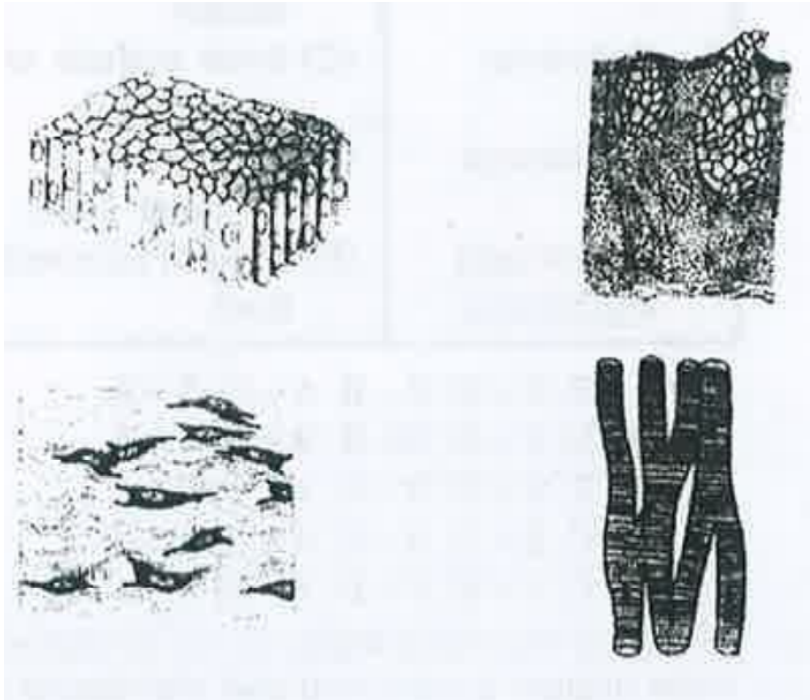


Watch Video Solution

181. The four sketches A, B,C and D given below represent four different types of animal tissues .

which one of these is correctly identified

in the options given along with its correct location and function ?



	Tissue	Location	Function
A. (A)	Glandular epithelium Tissue	Intestine	secretion
B. (B)	Collagen fibres	Cartilage	Attach skeletal muscles to bones

	Tissue	Location	Function
C.	(C) Smooth muscle tissue	Heart	Heart contraction
D.	(D) Columnar epithelium	Nephron	Function secretion and absorption

Answer: A

 [Watch Video Solution](#)

182. Supportive skeletal structures in the human external ears and nose tip are of

- A. Ligaments
- B. Areolar tissue
- C. Bone
- D. cartilage

Answer: D

 [Watch Video Solution](#)

183. The cell membranes of adjacent cells are fused at

- A. macula adherens
- B. zonula adherens
- C. zonula occludens
- D. nexus

Answer: C



[Watch Video Solution](#)

184. Bone is mainly composed of

- A. iron and phosphorus
- B. sulphur and calcium
- C. calcium and phosphorus

D. calcium and magnesium

Answer: C



Watch Video Solution

185. Simple storage protein that coagulates upon heating but remains soluble in dilute salt solution is correctly exemplified by

A. globulin

B. albumin

C. histone

D. collagen

Answer: B



Watch Video Solution

186. Choose the correctly matched pair

- A. inner surface of bronchioles - squamous epithelium
- B. Inner lining of salivary ducts - Ciliated epithelium
- C. Moist surface of buccal cavity - Glandular epithelium
- D. Tubular parts of nephrons - Cuboidal epithelium

Answer: D



Watch Video Solution

187. Choose the correctly matched pair

- A. Cartilage - Loose connective tissue
- B. Tendon - Specialized connective tissue
- C. Adipose tissue - Dense connective tissue

D. Areolar tissue - Loose connective tissue

Answer: D



[Watch Video Solution](#)

188. The function of the gap junction is to

A. performing cementing to keep neighbouring cells together .

B. facilitate communication between adjoining cells by connecting the cytoplasm

for rapid transfer of ions, small molecules etc. And some large molecules

C. separate two cells from each other

D. stop substance from leaking across a tissue

Answer: B



[Watch Video Solution](#)

189. Which type of tissue correctly matches with its location

Tissue	Location
(1) Cuboidal epithelium	Lining of stomach
(2) Smooth muscle	Wall of intestine
(3) Areolar tissue	Tendons
(4) Transitional epithelium	Tip of nose

- A. Tissue Location
Areolar tissue Tendons
- B. Tissue Location
Transitional epithelium Tip of nose
- C. Tissue Location
Cuboidal epithelium lining of stomach
- D. Tissue Location
Smooth muscle Wall of intestine

Answer: D



Watch Video Solution

190. Name the blood cells, whose reduction in number can cause clotting disorder, leading to excessive loss of blood from the body.

- A. Erythrocytes
- B. Leucocytes
- C. Neutrophils
- D. Thrombocytes

Answer: D



Watch Video Solution

191. Serum differs from blood in

- A. lacking globulins
- B. lacking albumins
- C. lacking clotting factors
- D. lacking antibodies

Answer: C



Watch Video Solution

192. Adult human RBCs are enucleate. Which of the following statement

(s) is/ are not most appropriate explanation for this feature?

(a) They do not need to reproduce

(b) They are somatic cells

(c) They do not metabolize

(d) All their internal space is available for oxygen transport

A. Only (iv)

B. Only (i)

C. (i), (iii) and (iv)

D. (ii) and (iii)

Answer: A



Watch Video Solution

193. Myelin sheath is produced by

or

Myelin of the nerve fibres of the central nervous system is produced and maintained by

- A. Schwann cells and Oligodendrocytes
- B. Astrocytes and Schwann cells
- C. Oligodendrocytes and Osteoclasts
- D. Osteoclasts and Astrocytes

Answer: A



Watch Video Solution