



BIOLOGY

BOOKS - CENGAGE BIOLOGY

(ENGLISH)

PLANT GROWTH AND DEVELOPMENT

Exercises

1. The period of suspended growth due to exogenous condition is termed as

A. Dormancy

B. Rest

C. Quiescence

D. All of these

Answer: D



Watch Video Solution

2. Seed dormancy in tomato seeds is due to

A. Impermeable seed coat

B. Immature embryo

C. Presence of ferulic acid in pulp

D. Abscisic acid in pulp

Answer: C



Watch Video Solution

3. Treatment of seed at low temperature under moist conditions to break its dormancy is called

A. Scarification

B. Pressure chamber method

C. Stratification

D. Impaction

Answer: C



Watch Video Solution

4. Which of the given event does not happen during seed germination?

A. Emergence of radical

B. Increase in the rate of respiration

C. Hydrolysis of stored polysaccharides and
proteins

D. Photosynthesis by cotyledons

Answer: D



Watch Video Solution

5. Real growth is

A. protoplasmic growth

B. Cell wall growth

C. Growth in size

D. Growth in volume

Answer: A



Watch Video Solution

6. Growth in plant organs is

A. Qualitative and extrinsic

B. Quantitative and intrinsic

C. Qualitative and intrinsic

D. Quantitative and extrinsic

Answer: C



Watch Video Solution

7. The point in S-shaped growth curve where growth is maximum is called

A. Inflexion point

B. Compensation point

C. Extinction point

D. Deflection point

Answer: C



Watch Video Solution

8. Exponential phase in growth is characterized by

A. Enlargements of cells

B. Constant increase in growth rate

C. Maturation of cells

D. Both (1) and (2)

Answer: D



Watch Video Solution

9. Which of the following is not a growth-measuring instrument?

A. Auxanometer

B. Crescograph

C. Horizontal microscope

D. Clinostat

Answer: 3



Watch Video Solution

10. The plant growth is regulated by

A. Climatic factor

B. Growth hormones

C. Both (1) and (2)

D. None of these

Answer: B



Watch Video Solution

11. The growth in plants differs from growth in animals in

A. Being localized and indefinite

B. Being indefinite

C. Having indefinite life span

D. Having definite life span

Answer: A



Watch Video Solution

12. The scientist who suspected the presence of some growth substances was

A. Linnaeus

B. Mendel

C. Charles Darwin

D. Robert Brown

Answer: C



Watch Video Solution

13. If an etiolated stem could be first saturated with auxin by spraying and then exposed to a streak of light from one side it will

- A. Bend toward the light
- B. Bend away from the light
- C. Grow straight upward
- D. Be prevented from growing

Answer: A



Watch Video Solution

14. The plant hormone which is basic in nature?

A. Auxin

B. Gibberellin

C. Cytokinin

D. Abscisic acid

Answer: B



Watch Video Solution

15. Which is not a physiological effect of auxins?

A. Cell elongation

B. Development of parthenocarpic fruits

C. Prevention of abscission of leaves and
fruits

D. Reversal of genetic dwarfism

Answer: B



Watch Video Solution

16. Transport of auxins of

A. Polar

B. Diffuse

C. Through xylem

D. Through phloem

Answer: D



Watch Video Solution

17. The movement shown by a plant kept in a phototropic chamber is due to

- A. Differential synthesis of hormones
- B. Differential translocation of hormones
- C. None of these
- D. Both (1) and (2)

Answer: B



Watch Video Solution

18. Sprouting of potato can be prevented in stored by

A. CH_4

B. GA_3

C. MH

D. CK

Answer: B



Watch Video Solution

19. Phytotron is a device by which

A. Electron flow is measured

B. Mutations are induced in plants

C. The wind velocity is measured

D. Plants are grown in controlled environment

Answer: B



Watch Video Solution

20. Apical dominance in higher plants is due to

A. Balance between auxins and cytokinins

B. Enzyme activity

C. Carbohydrates and nitrogen ratio

D. Incorrect photoperiod

Answer: B



Watch Video Solution

21. Cholodny-Went theory is connected with

A. phototropism

B. Photomorphogenesis

C. Photorespiration

D. Photosynthesis

Answer: B



Watch Video Solution

22. Gibbane ring skeleton in structure and production of hydrolytic enzymes in barley endosperm is a characteristic of

A. Cytokinin

B. Auxins

C. Gibberellins

D. Ethylene

Answer: C



Watch Video Solution

23. The synthesis of amylase in certain cereals is stimulated by

A. IAA

B. GA

C. OK

D. ABA

Answer: D



Watch Video Solution

24. Cytokinins are considered a part of

A. t-RNA

B. r-RNA

C. DNA

D. Vascular tissues

Answer: B



Watch Video Solution

25. An anti-ageing plant hormone from the following is

A. IAA

B. GA_3

C. Zeatin

D. C_2H_4

Answer: C



Watch Video Solution

26. Richmond-Lang effect is shown by

(a) Auxins

(b) Sugars

(c) Zeatin

(d) Gibberellin

A. IAA

B. OK

C. GA

D. C_2H_4

Answer: B



Watch Video Solution

27. The number of female flowers can be increased by the application of

A. IAA

B. C_2H_4

C. CK

D. All of these

Answer: A



Watch Video Solution

28. Triple response is shown by hormone

A. Ethylene

B. CK

C. 2, 4-D

D. GA_3

Answer: A



Watch Video Solution

29. Which of the following is an anti-gibberellin as well as a stress hormone?

(a) ABA

(b) CK

(c) NAAM

(d) 2, 4-D

A. ABA

B. CK

C. NAAM

D. 2, 4-D

Answer: B



Watch Video Solution

30. Which is not true for abscisic acid?

(a) Acts as an anti-transpirant

(b) Synthesized in chloroplast from carotenoids

(c) Increases stress tolerance in plants

(d) Induces epinasty of leaves and flowers

A. Acts as an anti-transpirant

B. Synthesized in chloroplast from carotenoids

C. Increases stress tolerance in plants

D. Induces epinasty of leaves and flowers

Answer: A



Watch Video Solution

31. $CH_2 = CH_2$ is mainly responsible for

A. Formation of root hair

B. Formation of nodes

C. Ripening of fruits

D. Formation of internodes

Answer: C



Watch Video Solution

32. For flowering, critical dark period should always be exceeded in

- A. Long day plants
- B. Short day plants
- C. Day neutral plants
- D. All types of plants

Answer: B



Watch Video Solution

33. Photoperiodic stimulus is perceived by

- (a) Meristematic cells
- (b) Leaves
- (c) Flowers
- (d) Seeds

A. Meristematic cells

B. Leaves

C. Flowers

D. Seeds

Answer: A



Watch Video Solution

34. Which of the following statements does not characterize photoperiodism?

A. Mediated by florigen hormone.

B. Conversion of shoot apex into reproductive apex.

C. Red light is stimulatory in SDP, LDP, and DNP for flowering.

D. The number of correct photoperiodic induction may be 1-25

Answer: B



Watch Video Solution

35. Find the odd one (w.r.t. photoperiod) from the following.

A. Rice

B. Cosmos

C. Chrysanthemum

D. Larkspur

Answer: D



Watch Video Solution

36. Hypothetical florigen could be produced prematurely in long day plant by exposing it to

- A. Shortening of period
- B. Red light during night
- C. Extending dark period
- D. Far red light

Answer: B



Watch Video Solution

37. The acquisition of ability to flower by chilling treatment is called

(a) Vernalization

(b) Yarovization

(c) Springification

(d) All of these

A. Vernalization

B. Yarovization

C. Springification

D. All of these

Answer: A



Watch Video Solution

38. Which is not a requirement of vernalisation?

- A. Aerobic condition
- B. Moisture
- C. high temperature
- D. Differentiated tissues

Answer: C



Watch Video Solution

39. The hormone which can replace the long days and low temperature requirement for flowering in some plants is

- (a) Gibberellin
- (b) Cytokinin
- (c) Vernalin
- (d) Ethylene

A. Gibberellin

B. Cytokinin

C. Vernalin

D. Ethylene

Answer: A



Watch Video Solution

40. Senescence is

A. Terminal irreversible phase of ageing

B. Combined deteriorative processes in
mature plant

C. A period between complete maturity and
final death of an organ

D. All of these

Answer: B



Watch Video Solution

41. Shoot or top senescence occurs in

A. Rice

B. Gladiolus

C. Mango

D. Dalbergia

Answer: B



Watch Video Solution

42. Abscission zone is characterized by

- (a) Presence of callose plugs
- (b) Presence of a distinct layer
- (c) Activity of celluloses and pectinases
- (d) All of these

- A. Presence of callose plugs
- B. Presence of a distinct layer
- C. Activity of celluloses and pectinases
- D. All of these

Answer: A



Watch Video Solution

43. In which layer of abscission zone, the breakdown of cells occur?

(a) Gonidial layer

(b) Protective layer

(c) Separation layers

(d) All of these

A. Gonidial layer

B. Protective layer

C. Separation layers

D. All of these

Answer: C



Watch Video Solution

44. The leaves of *Mimosa pudica* (sensitive plant) droop down on touch because

A. The plant has nervous system

B. The leaves are very tender

C. The leaves are injured

D. The turgor pressure of the leaf base changes

Answer: D



Watch Video Solution

45. Plants growing under prolonged water stress condition develop the phenomenon of leaf area adjustment which is

- A. Shortening of plastochron
- B. Reduction of leaf surface area
- C. Shortening of internodal length
- D. Shedding of older leaves

Answer: D



Watch Video Solution

46. The seasonal activity of cambium is promoted by

(a) Proline

(b) Auxins

(c) Ethylene

(d) Abscissic acid

A. Proline

B. Auxins

C. Ethylene

D. Abscissic acid

Answer: C



Watch Video Solution

47. Find odd one (w.r.t. cause of seed dormancy)

(a) Amaranthus

(b) Capsella

(c) Ginkgo

(d) Trigonella

A. Amaranthus

B. Capsella

C. Ginkgo

D. Trigonella

Answer: D



Watch Video Solution

48. The pigment concerned with various photomorphogenetic processes in plant has

(a) Open tetrapyrrolic structure

(b) Absorption spectra different from that of

chlorophyll

(c) Positive effects on membrane permeability

(d) All of these

A. Open tetrapyrrolic structure

B. Absorption spectra different from that
of chlorophyll

C. Positive effects on membrane
permeability

D. All of these

Answer: C





49. Choose the correct alternative :

Plant hormones are:

1. Growth regulators
2. Growth promoters
3. Growth inhibitors
4. All of these

A. Growth regulators

B. Growth promoters

C. Growth inhibitors

D. None of above

Answer: A



Watch Video Solution

50. The most common auxin is

(a) GA

(b) ABA

(c) Kinetin

(d) IAA

A. GA

B. ABA

C. Kinetin

D. IAA

Answer: D



Watch Video Solution

51. Choose the correct alternative :

Gibberellin promotes cell division and elongation in:

A. Leaves

B. Roots

C. Shoots

D. All of these

Answer: C



Watch Video Solution

52. The deteriorative processes in plants that naturally terminate their functional life are collectively called

(a) Wilting

(b) Abscission

(c) Plasmolysis

(d) Senescence

A. Wilting

B. Abscission

C. Plasmolysis

D. Senescence

Answer: D



Watch Video Solution

53. Which of the following is used for artificial ripening of fruits?

(a) Auxin

(b) ABA

(c) Ethylene gas

(d) Cytokinin

A. Auxin

B. ABA

C. Ethylene gas

D. Cytokinin

Answer: C



Watch Video Solution

54. The induction of flowering is used for ripening of fruits?

A. Vernalization

B. Photoperiodism

C. Cryobiology

D. Chlozology

Answer: A



Watch Video Solution

55. Plant growth is

(a) Limited

(b) Unlimited

(c) Diffused

(b) Both a and b

A. Limited

B. Unlimited

C. Diffused

D. Both (1) and (2)

Answer: B



Watch Video Solution

56. Hormone produced during leaf fall is

(a) IAA

(b) ABA

(c) Florigen

(d) Kinetin

A. IAA

B. ABA

C. Florigen

D. Kinetin

Answer: B



Watch Video Solution

57. Climacteric fruit is the one which shows

A. High respiration rate at ripening

B. Sudden change in taste

C. Sudden change in color and shape

D. None of the above

Answer: A



Watch Video Solution

58. Phytochrome is abundantly found in

A. Vascular cryptogams

B. Prokaryotes

C. Brain cell

D. Kidney cell

Answer: A



Watch Video Solution

59. Genetically dwarf plant can be converted into a plant of normal height with help of:

(a) Auxin

(b) Gibberellin

(c) Cytokinins

(d) Auxin

A. Auxin

B. Gibberellin

C. Cytokinins

D. Auxin

Answer: B



Watch Video Solution

60. A phytohormone involved in the de novo synthesis of α -amylase in germinating seeds is

- (a) Auxin
- (b) Gibberellin
- (c) Ethylene
- (d) Cytokinin

A. Auxin

B. Gibberellin

C. Ethylene

D. Cytokinin

Answer: B



Watch Video Solution

61. Phytochrome is responsible for

A. Photosynthesis

B. Flowering

C. Fruit formation

D. Respiration

Answer: B



Watch Video Solution

62. Which of the following is a gaseous hormone ?

(a) ethylene

(b) cytokinin

(c) both ethylene and auxin

(d) gibberellin

A. Ethylene

B. Cytokinin

C. Both ethylene and auxin

D. Gibberellin

Answer: A



Watch Video Solution

63. The pineapple which under natural condition is difficult to blossom has been made to produce fruits throughout the year by application of

A. IAA, IBA

B. NAA, 2, 4-D

C. Phenyl mercuric acid

D. Cytokinins

Answer: A



Watch Video Solution

64. Most of the plants are seasonal due to

(a) Photoperiodism

(b) Phototropism

(c) Photosynthesis

(d) Photolysis

A. Photoperiodism

B. Phototropism

C. Photosynthesis

D. Photolysis

Answer: A



Watch Video Solution

65. Certain chemical substances having profound effect on growth ,are called

(a) Catalytic agents

(b) Phytohormones

(c) Enzymes

(d) Compost

A. Catalytic agents

B. Phytohormones

C. Enzymes

D. Compost

Answer: B



Watch Video Solution

66. Phytochrome was discovered by

A. W. Went

B. Garner and Allard

C. F.F. Blackman

D. Borthwick and Handricks

Answer: D



Watch Video Solution

67. The activity of α -amylase in the endosperm of a germinating seed of barley is induced by

- A. Ethylene
- B. Cytokinin
- C. IAA
- D. Gibberellin

Answer: D



68. A Pigment concerned with both floral induction and seed germination is

- A. Florigen
- B. Chlorophyll
- C. Plastocyanin
- D. Phytochrome

Answer: D



69. Gibberellins were first discovered in fungal genus

A. Mucor

B. Rhizopus

C. Agaricus

D. Fusarium

Answer: D



Watch Video Solution

70. The presence of auxins in a solution could be tested by

(a) *Avena sativa* stem tip test

(b) Carbon tetrachloride test

(c) Iodine test

(d) Defoliation test

A. *Avena sativa* stem tip test

B. Carbon tetrachloride test

C. Iodine test

D. Defoliation test

Answer: A



Watch Video Solution

71. Auxanometer is used to measure

A. Length

B. Width

C. Depth

D. Growth

Answer: D



Watch Video Solution

72. The pigment that absorbs red and far-red light in plants, is

- A. Chlorophyll
- B. Phytochrome
- C. Cytochrome
- D. Carotene

Answer: B



73. The hormone which can break seed dormancy is

- (a) Auxin
- (b) Gibberellin
- (c) Ethylene
- (d) Cytokinin

A. Auxin

B. Gibberellin

C. Ethylene

D. Cytokinin

Answer: B



Watch Video Solution

74. Which one of the following is not a synthetic auxin?

(a) 2, 4-D

(b) 2, 4, 5-T

(c) NAA

(d) IAA

A. 2, 4-D

B. 2, 4, 5-T

C. NAA

D. IAA

Answer: D



Watch Video Solution

75. Which plant hormone causes fruit ripening?

(a) IAA

(b) Cytokinin

(c) Ethylene

(d) GA

A. IAA

B. Cytokinin

C. Ethylene

D. GA

Answer: C



Watch Video Solution

76. Which hormone is responsible for apical growth

(a) IAA

(b) ABA

(c) GA

(d) All of these

A. IAA

B. ABA

C. GA

D. All of these

Answer: A



Watch Video Solution

77. Abscisic acid controls

- (a) Cell elongation and cell wall formation
- (b) Shoot elongation
- (c) Leaf fall and dormancy
- (d) Cell division

A. Cell elongation and cell wall formation

B. Shoot elongation

C. Leaf fall and dormancy

D. Cell division

Answer: C



Watch Video Solution

78. Which hormone is used to induce ripening in banana?

(a) Cytokinin

(b) Ethylene

(c) ABA

(d) GA_3

A. Cytokinin

B. Ethylene

C. ABA

D. GA_3

Answer: B



Watch Video Solution

79. Which among the following is a synthetic plant hormone?

A. IAA

B. GA

C. 2, 4-D

D. ABA

Answer: C



Watch Video Solution

80. Richmond-Lang effect is shown by

(a) Auxins

(b) Sugars

(c) Zeatin

(d) Gibberellin

A. Auxins

B. Sugars

C. Zeatin

D. Gibberellin

Answer: C





Watch Video Solution

81. Ethylene is used for

- A. Growth of plants
- B. Delaying fruit abscission
- C. Ripening of fruits
- D. Stopping the leaf abscission

Answer: C



Watch Video Solution

82. Auxanometer is used to measure

- A. Respiration
- B. Transpiration
- C. Plant movement
- D. Growth

Answer: D



Watch Video Solution

83. Which of the following plant hormone is extracted from fungus?

A. Ethylene

B. Gibberellin

C. Cytokinin

D. 2, 4-D

Answer: B



Watch Video Solution

84. In which region of the plant does highest auxin concentration occurs

- A. Root and shoot tips
- B. Leaves and fruits
- C. Mid stem portion
- D. None of these

Answer: A



Watch Video Solution

85. Ethylene is used for

- A. Decreasing the senescence
- B. Increasing the heights of stem
- C. Ripening of fruits
- D. Prevention of leaf fall

Answer: C



Watch Video Solution

86. The movement of pollen tube is called

(a) Chemotropism

(b) Thermotaxis

(c) Thermonastic

(d) Hydrotropism

A. Chemotropism

B. Thermotaxis

C. Thermonastic

D. Hydrotropism

Answer: A



Watch Video Solution

87. Which of the following plant is LDP?

(a) Xanthium

(b) Soyabean

(c) Wheat

(d) Tobacco

A. Xanthium

B. Soyabean

C. Wheat

D. Tobacco

Answer: A



Watch Video Solution

88. Phytotron is

A. A controlled condition chamber for plants

B. Leaf culture process

C. Special culture of seeds

D. Root culture process

Answer: B



Watch Video Solution

89. Phytochrome is a

A. *[Math Processing Error]* form

B. P_r form

C. Both forms

D. None of these

Answer: A



Watch Video Solution

90. Which pigment is responsible for flowering in plant?

A. Phytochrome

B. Cytochrome

C. Anthocyanin

D. Xanthophyll

Answer: A



Watch Video Solution

91. The process of vernalization can be induced by

- A. Cytokinin
- B. Auxins
- C. Phototropin
- D. GA

Answer: D



Watch Video Solution

92. Phototropism is due to the hormone

(a) IAA

(b) GA

(c) 2-4 D

(d) Cytokinin

A. IAA

B. GA

C. 2-4 D

D. Cytokinin

Answer: A



Watch Video Solution

93. Phototropism affects

A. (a) Vegetative growth

B. (b) Internode elongation

C. (c) Seed germination

D. (d) Reproductive growth

Answer: B



Watch Video Solution

94. Apical dominance is not affected by

- (a) Indoleacetic acid
- (b) Gibberellins
- (c) Indoleacetaldehyde
- (d) Indolebutyric acid

A. Indoleacetic acid

B. Gibberellins

C. Indoleacetaldehyde

D. Indolebutyric acid

Answer: D



Watch Video Solution

95. The activity of α -amylase in the endosperm of a germinating seed of barley is induced by

A. Ethylene

B. Cytokinin

C. IAA

D. Gibberellin

Answer: D



Watch Video Solution

96. A pigment concerned with floral induction is

A. Florigen

B. Chlorophyll

C. Plastocyanin

D. Phytochrome

Answer: A



Watch Video Solution

97. Which of the following may be the substitute of photoperiodism?

A. Humidity

B. Temperature

C. Mineral nutrients

D. Soil moisture

Answer: B



Watch Video Solution

98. Phytohormone commonly called stress hormone is

(a) Auxin

(b) Abscisic acid

(c) Gibberellin

(d) Cytokinins

A. Auxin

B. Abscisic acid

C. Gibberellin

D. Cytokinins

Answer: B



Watch Video Solution

99. The ripening of fruits can be hastened by treatment with

(a) IAA

(b) Florigen

(c) Ethylene

(d) Cytokinin

A. IAA

B. Florigen

C. Ethylene

D. Cytokinin

Answer: C



Watch Video Solution

100. Opening of floral bud is an example of

- (a) Induced movement
- (b) Hyponastic movement
- (c) Epinastic movement
- (d) Cleistogamous movement

A. Induced movement

B. Hyponastic movement

C. Epinastic movement

D. Cleistogamous movement

Answer: C



Watch Video Solution

101. Pruning of plants promotes branching because the axillary buds get sensitized to

A. Ethylene

B. Gibberellin

C. Cytokinin

D. IAA

Answer: A



Watch Video Solution

102. IAA mainly inhibits the growth of

A. Root

B. Leaf

C. Shoot

D. Generally whole plant

Answer: D



Watch Video Solution

103. Movement due to external stimuli is known as

A. Autonomic movement

B. Paratonic movement

C. Amoeboid movement

D. Excretory movement

Answer: B



Watch Video Solution

104. Auxin originates at the tip of the stem and controls growth elsewhere. The movement of auxin is largely

A. Acropetal

B. Basipetal

C. Lateral

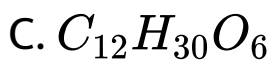
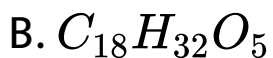
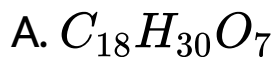
D. Centripetal

Answer: B



Watch Video Solution

105. The formula of Auxin-A is





Answer: B



Watch Video Solution

106. Growth hormone responsible for apical dominance is

A. (a) Auxin

B. (b) Cytokinin

C. (c) Gibberellin

D. (d) Ethylene

Answer: A



Watch Video Solution

107. 2, 4-D is a synthetic

A. Auxin

B. Gibberellin

C. Cytokinin

D. Florigen

Answer: A



Watch Video Solution

108. Which of the following induces femaleness in plants?

A. Auxin and ethylene

B. Ethanol

C. ABA

D. Gibberellin

Answer: A



Watch Video Solution

109. Fruit and leaf drop at early stages can be prevented by the application of

A. GA_3

B. NAA

C. Ethylene

D. Zeatin

Answer: B



Watch Video Solution

110. Which of the following is a weed killer?

A. 2, 4-D

B. NAA

C. GA

D. ABA

Answer: A



Watch Video Solution

111. Which one is prevents over-ripening of banana and browning of cut fruits?

- A. Gibberellic Acid
- B. Indole-3 Acetic Acid
- C. Ascorbic Acid
- D. Abscisic Acid

Answer: C



112. Which weedicide can defoliate the complete forest :

A. 2, 4-D

B. MH

C. AMO-1618

D. Biopesticide

Answer: C



113. Which is agent orange ?

A. Biodegradable insecticide

B. Dioxin weedicide

C. Biofertilizer

D. Biopesticide

Answer: B



Watch Video Solution

114. Phytotron is a device by which

A. Induce mutation breeding in wheat

B. Electron bombarding system

C. Plants are grown in controlled environment

D. Heavy water plants

Answer: C



Watch Video Solution

115. Richmond-Lang effect is shown by

(a) Auxins

(b) Sugars

(c) Zeatin

(d) Gibberellin

A. Cytokinin

B. Auxin

C. ABA

D. All the above

Answer: A



Watch Video Solution

116. A hypothetical chemical involved in the following of plants is or chemical agent which has important role in flowering is

A. (a) Gibberellin

B. (b) NAA

C. (c) Florigen

D. (d) IAA

Answer: C



Watch Video Solution

117. Cell elongation in internodal regions of the green plants takes due to

A. Ethylene

B. Indole acetic acid

C. Cytokinin

D. Gibberellins

Answer: D



118. One set of a plant was grown at 12 hours day and 12 hours night period cycles and it flowered while in the other set night phase was interrupted by flash of light and it did not produce flower. Under which one of the following categories will you place this plant ?

A. Short day

B. Long day

C. Darkness neutral

D. Day neutral

Answer: A



Watch Video Solution

119. The maximum growth rate occurs in

A. Exponential phase

B. Stationary phase

C. Senescent phase

D. Lag phase

Answer: A



Watch Video Solution

120. The ability of the Venus Flytrap to capture insects is due to

- A. Chemical stimulation by the prey
- B. A passive process requiring no special ability on the part of the plant
- C. Specialized "muscle-like" cells

D. Rapid turgor pressure changes

Answer: B



Watch Video Solution

121. Why is vivipary an undesirable character for annual crop plants ?

A. It reduces vigor of the plant.

B. The seeds cannot be stored under normal conditions for the next season.

C. The seeds cannot exhibit long dormancy

D. It adversely affects fertility of the plant.

Answer: B



Watch Video Solution

122. Gibberellins can promote seed germination because of their influence on

A. Rate of cell division

B. Production of hydrolyzing enzymes

C. Synthesis of abscisic acid

D. Absorption of water through hard seed coat.

Answer: B



Watch Video Solution

123. How does pruning help in making the hedge dense?

A. The apical shoot grows faster after pruning.

B. It releases wound hormones

C. It induces the differentiation of new shoots from the rootstock.

D. It frees axillary buds from apical dominance.

Answer: D



Watch Video Solution

124. Parthenocarpic tomato fruits can be produced by-

- A. Raising the plants from vernalized seeds
- B. Treating the plants with phenylmercury acetate
- C. Removing androecium of flowers before pollen grains are released
- D. Treating the plants with low concentrations of gibberellic acid and auxins.

Answer: D



Watch Video Solution

125. An enzyme that can stimulate germination of barley seeds in

- A. Protease
- B. Invertase
- C. α -amylase
- D. Lipase

Answer: C



Watch Video Solution

Assertion Reasoning

1. Assertion : if a plant is kept horizontally, auxin accumulates on lower surface.

Reason : Displacement of statoliths and other cell organelles to lower surface modifies the translocation pattern of auxin.

A. If both Assertion and Reason are true and the Reason is the correct explanation of the Assertion.

B. If both Assertion and Reason are true, but the Reason is not the correct explanation of the Assertion.

C. If Assertion is true, but Reason is false.

D. If both Assertion and Reason are false.

Answer: A



Watch Video Solution

2. Assertion : Only bud, or embryo can be vernalized.

Reason : Vernalisation requires dividing cells.



[Watch Video Solution](#)

3. Assertion : Phytochrome, a protein, has regulatory function.

Reason : Various morphogenetic processes are regulated by it





[Watch Video Solution](#)

4. Assertion : Auxins treatment cause acidification of cell wall and help in cell elongation

Reason : Loosening of cell wall microfibrils occurs.



[Watch Video Solution](#)

5. Assertion : Cytokinin are anti ageing hormones.

Reason : They cause change in osmotic potential by increasing the volume of mature cells.



[Watch Video Solution](#)

Archives

1. Opening of floral buds into flowers, is a type of
of

A. Autonomic movement of growth

B. Autonomic movement of locomotion

C. Autonomic movement of variation

D. Paratonic movement of growth

Answer: A



Watch Video Solution

2. Which one of the following pairs is not correctly matched?

A. IAA-Cell wall elongation

B. Abscisic acid-Stomatal closure

C. Gibberellic acid-Leaf fall

D. Cytokinin-Cell division

Answer: C



Watch Video Solution

3. The wavelength of light absorbed by Pr form of phytochrome is

A. 620 nm

B. 640 nm

C. 680 nm

D. 720 nm

Answer: B



Watch Video Solution

4. Foolish seedling' disease of rice led to the discovery of

A. IAA

B. GA

C. ABA

D. 2, 4-D

Answer: B



Watch Video Solution

5. Senescence as an active developmental cellular process in the growth and functioning of a flowering plant, is indicated in

A. Annual plants

B. Floral parts

C. Vessels and tracheid differentiation

D. Leaf abscission

Answer: D



Watch Video Solution

6. Importance of day length (photoperiodism)

in flowering of plants was first shown in

A. Cotton

B. Petunia

C. Lemna

D. Tobacco

Answer: D



Watch Video Solution

7. One of the synthetic auxin is

A. IBA

B. NAA

C. IAA

D. GA

Answer: B



Watch Video Solution

8. Which one of the following acids is a derivative of carotenoids?

A. Abscisic acid

B. Indole butyric acid

C. Indole-3- acetic acid

D. Gibberellic acid

Answer: A



Watch Video Solution

9. Phototropic curvature is the result of uneven distribution of

A. Cytokinins

B. Auxin

C. Gibberellin

D. Phytochrome

Answer: B



Watch Video Solution

10. Importance of day length (photoperiodism) in flowering of plants was first shown in

A. Tomato

B. Cotton

C. Tobacco

D. Potato

Answer: C



Watch Video Solution

11. Coiling of garden pea tendrils around any support is an example

A. Thigmotropism

B. Thermotaxis

C. Thigmotaxis

D. Thigmonasty

Answer: A



Watch Video Solution

12. One of the commonly used plant growth hormone in tea plantations is -

A. Abscisic acid

B. Zeatin

C. Indole-3- acetic acid

D. Ethylene

Answer: B



Watch Video Solution

13. Root development is promoted by -

A. Auxin

B. Gibberellin

C. Ethylene

D. Abscisic acid

Answer: A



Watch Video Solution

14. Through their effect on plant growth regulators, what do the temperature and light control in the plants

A. Apical dominance

B. Flowering

C. Closure of stomata

D. Fruit elongation

Answer: B



Watch Video Solution

15. Which one of the following generally acts as an antagonist to gibberellins?

A. Zeatin

B. Ethylene

C. ABA

D. IAA

Answer: C



Watch Video Solution

16. Vernalisation stimulates flowering in -

A. Zamikand

B. Turmeric

C. Carrot

D. Ginger

Answer: C



Watch Video Solution

17. During seed germination its stored food is mobilized by

A. Ethylene

B. Cytokinin

C. ABA

D. Gibberellin

Answer: D



Watch Video Solution

18. Which one of the following is not used for exsituplant conservation ?

A. Field gene banks

B. Seed banks

C. Shifting cultivation

D. Botanical Gardens

Answer: C



Watch Video Solution

19. Non-albuminous seed is produced in

A. Maize

B. Castor

C. Wheat

D. Pea

Answer: D



Watch Video Solution

20. Which one of the following growth regulators is known as 'stress hormone'?

A. Abscissic acid

B. Ethylene

C. GA_3

D. Indole acetic acid

Answer: A



Watch Video Solution

21. A few normal seedling of tomato were kept in a dark room. After a few days were found to have become white coloured like albinos. Which of the following terms will you use to describe them

A. Mutated

B. Embolised

C. Etiolated

D. Defoliated

Answer: C



Watch Video Solution

22. Dr. F. Went noted that if coleoptile tips were removed and placed on agar for one hour , the agar would produce a bending when placed on one side of freshly cut

coleoptile stumps .Of what significance is this experiment

A. It made possible the isolation and exact identification of auxin

B. It is the basis for quantitative determination of small amounts of growth-promoting substances.

C. It supports the hypothesis that IAA is auxin.

D. It demonstrated polar movements of auxins

Answer: B



Watch Video Solution

23. What causes a green plant exposed to the light on only one side to bend toward the source of light as it grows?

- A. Auxin accumulates on the shaded side, stimulating greater cell elongation there
- B. Green plants need light to perform photosynthesis
- C. Green plants seek light because they are phototropic
- D. Light stimulates plant cells on the lighted side to grow faster.

Answer: A



Watch Video Solution

24. Typical growth curve in plants is

A. Parabolic

B. Sigmoid

C. Linear

D. Stair-steps shaped

Answer: C



Watch Video Solution

25. Auxin can be bioassayed by

A. Lettuce hypocotyl elongation

B. Avena coleoptile curvature

C. Hydroponics

D. Potometer

Answer: B



Watch Video Solution

26. The Avena curvature is used for bioassay of

A. ABA

B. GA3

C. IAA

D. Ethylene

Answer: C



Watch Video Solution

27. You are given a tissue with its potential for differentiation in an artificial culture .Which of the following pairs of hormones would you

add to the medium to secure shoots as well as roots

- A. Auxin and abscisic acid
- B. Gibberellin and abscisic acid
- C. IA and gibberellin
- D. Auxin and cytokinin

Answer: D



Watch Video Solution

28. Phytochrome is a

- A. Lipoprotein
- B. Chromoprotein
- C. Flavoprotein
- D. Glycoprotein

Answer: B



Watch Video Solution