



BIOLOGY

BOOKS - SARAS PUBLICATION

Kingdom Animalia

Example

1. What are flame cells?



Watch Video Solution

2. What are pinacocytes?



[Watch Video Solution](#)

3. What are choanocytes?



[Watch Video Solution](#)

4. What is mesoglea?



[Watch Video Solution](#)

5. What is symmetry?



[Watch Video Solution](#)

6. What is segmentation?



[Watch Video Solution](#)

7. What is pentamerous radial symmetry?



[Watch Video Solution](#)

8. What is chordates?



Watch Video Solution

9. What is hermaphrodite?



Watch Video Solution

10. What is Cnidoblast?



Watch Video Solution

11. What is nematocyst?



Watch Video Solution

12. What is Metagenesis?



Watch Video Solution

13. What is bioluminescence?



Watch Video Solution

14. What is lasso cells?



Watch Video Solution

15. What is monoecious animal?



Watch Video Solution

16. What is sexual dimorphism?



Watch Video Solution

17. What is hydrostatic skeleton?



Watch Video Solution

18. What are parapodia?



Watch Video Solution

19. What are setae?



Watch Video Solution

20. What is moulting?



Watch Video Solution

21. What is statocyst?



Watch Video Solution

22. What is mantle cavity?



Watch Video Solution

23. What is mantle cavity?



Watch Video Solution

24. What does Echinodermata mean?



Watch Video Solution

25. What does hemichordata mean?



Watch Video Solution

26. What is anadromous migration?



Watch Video Solution

27. What is heterocercal fin?



Watch Video Solution

28. What is diploblastic animals?



Watch Video Solution

29. What is protostomia?



Watch Video Solution

30. What is Deuterostomia?



Watch Video Solution

31. Define notochord.



Watch Video Solution

32. What is radial symmetry?



Watch Video Solution

33. Compare closed and opened circulatory system.



Watch Video Solution

34. Compare Schizocoelom with Enterocoelom.



Watch Video Solution

35. Differentiate Turtle and Tortoise.



Watch Video Solution

36. Why are spongin and spicules important to a sponge?



Watch Video Solution

37. What are the four characteristics common to most animals?



Watch Video Solution

38. List the features that all vertebrates show at some point in their development.



Watch Video Solution

39. Identify the structure that the archenteron becomes in a developing animal.



Watch Video Solution

40. Why flatworms are called acoelomates?



Watch Video Solution

41. Compare closed and opened circulatory system.



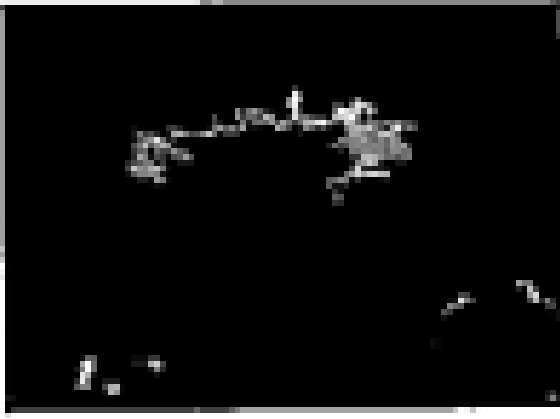
[Watch Video Solution](#)

42. Compare Schizocoelom with Enterocoelom.



[Watch Video Solution](#)

43. Observe the animal below and answer the following questions.

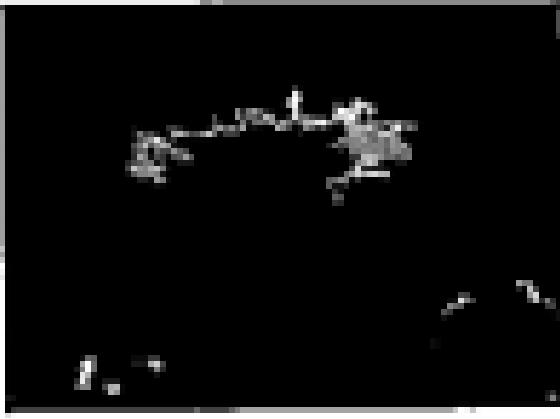


Identify the animal



[Watch Video Solution](#)

44. Observe the animal below and answer the following questions.

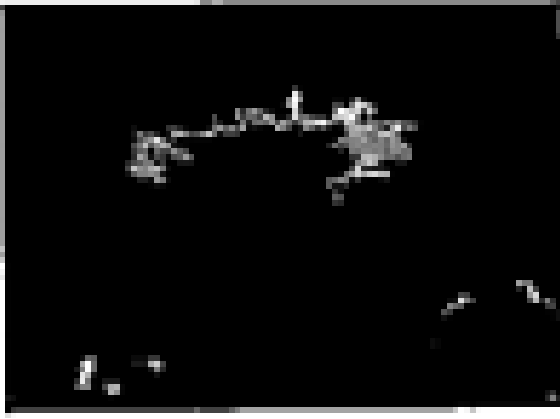


What type of symmetry does this animal exhibit?



[Watch Video Solution](#)

45. Observe the animal below and answer the following questions.

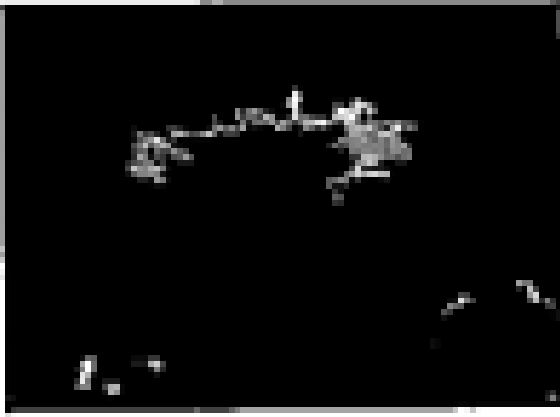


Is this animal Cephalized?



[Watch Video Solution](#)

46. Observe the animal below and answer the following questions.



How many germ layers does this animal have?



[Watch Video Solution](#)

47. Observe the animal below and answer the following questions.

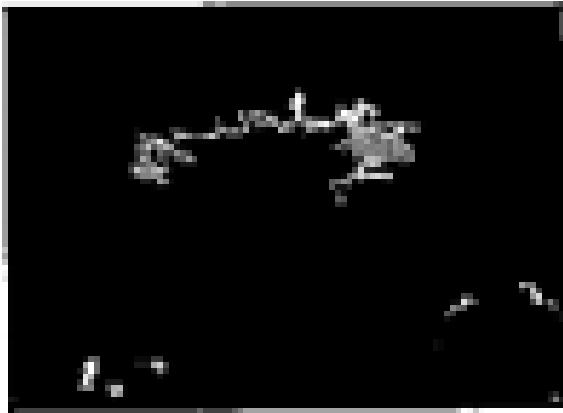


How many openings does this animal's digestive system have?



[Watch Video Solution](#)

48. Observe the animal below and answer the following questions.



Does this animal have neurons?



[Watch Video Solution](#)

49. Choose the term that does not belong in the following group and explain why it does not belong?



[Watch Video Solution](#)

50. What are flame cells?



[Watch Video Solution](#)

51. In which phyla is the larva trochopore found?



Watch Video Solution

52. Which of the chordate characteristics do tunicates retain as adults?



Watch Video Solution

53. List the characteristic features that distinguish cartilaginous fishes with living jawless fishes.



Watch Video Solution

54. List three features that characterise bony fishes.



Watch Video Solution

55. Concept Mapping- Use the following terms to create a concept map that shows the major characteristic features of the phylum nematoda: Round worms, pseudocoelomates, digestive tract, cuticle, parasite and sexual dimorphism.



Watch Video Solution

56. List the functions of air bladder in fishes.



Watch Video Solution

57. Write the characteristics that contributes to the success of reptiles on land.



Watch Video Solution

58. List the unique features of bird's endoskeleton.



Watch Video Solution

59. Could the number of eggs or young ones produced by an oviparous and viviparous female be equal? Why?



Watch Video Solution

60. Why do we need the classification of organisms ?



Watch Video Solution

61. On what basis are breeding animals classified?



Watch Video Solution

62. What are the characteristic features of kingdom animalia?



Watch Video Solution

63. How many phyla are present in kindom animalia?



Watch Video Solution

64. What are pinacocytes?



Watch Video Solution

65. What are choanocytes?



Watch Video Solution

66. Write about the cellular level of organisation of sponges.



Watch Video Solution

67. Animals such as sponges lack nervous tissue and muscle tissue, what does this tell you about sponges.



Watch Video Solution

68. Write about the organ level of organisation.



Watch Video Solution

69. Which animals exhibit organ system level of organisation?



Watch Video Solution

70. What is organ system level of organisation?



[Watch Video Solution](#)

71. Write about the digestive system of platyhelminthes.



[Watch Video Solution](#)

72. What is complete digestive system?



[Watch Video Solution](#)

73. What is mesoglea?



[Watch Video Solution](#)

74. What is symmetry?



[Watch Video Solution](#)

75. What is segmentation?



Watch Video Solution

76. What is pentamerous radial symmetry?



Watch Video Solution

77. What is chordates?



Watch Video Solution

78. What are the two subkingdos of kindgom Animalia?



Watch Video Solution

79. Write notes on subkingdom parazoa.



Watch Video Solution

80. Write notes on subkingdom Eumetazoa.



Watch Video Solution

81. What do you mean by radiata?



Watch Video Solution

82. What do you mean by Bilateral?



Watch Video Solution

83. What are the common examples for phylum Porifers?



[Watch Video Solution](#)

84. What is hermaphrodite?



[Watch Video Solution](#)

85. Where did the name Cnidaria come from?



[Watch Video Solution](#)

86. What is Cnidoblast?



[Watch Video Solution](#)

87. What is nematocyst?



[Watch Video Solution](#)

88. What are the functions of nematocysts?



[Watch Video Solution](#)

89. What is hypostome in coelenterate?



[Watch Video Solution](#)

90. What is Metagenesis?



[Watch Video Solution](#)

91. What is bioluminescence?



[Watch Video Solution](#)

92. What is lasso cells?



Watch Video Solution

93. What is monoecious animal?



Watch Video Solution

94. Platyhelminthes:



Watch Video Solution

95. What are the common example for the phylum platyhelminthes?



Watch Video Solution

96. What does Aschelminthes mean?



Watch Video Solution

97. What are the common examples for the phylum Aschelminthes.



[Watch Video Solution](#)

98. What is sexual dimorphism?



[Watch Video Solution](#)

99. What is hydrostatic skeleton?



[Watch Video Solution](#)

100. What are parapodia?



Watch Video Solution

101. What are setae?



Watch Video Solution

102. Name the respiratory pigments of annelids?



Watch Video Solution

103. What are the common examples for phylum Annelida?



Watch Video Solution

104. How is cephalisation advantageous to animals in finding food?



Watch Video Solution

105. What does the name Arthropoda mean?



[Watch Video Solution](#)

106. What is the exoskeleton of arthropods made from and what is its function?



[Watch Video Solution](#)

107. What is moulting?



[Watch Video Solution](#)

108. What is statocyst?



Watch Video Solution

109. What are the excretory organs of the phylum Arthropoda?



Watch Video Solution

110. What is mantle?



Watch Video Solution

111. What is mantle cavity?



Watch Video Solution

112. Write short notes on radula



Watch Video Solution

113. What are the sense organs of the phylum Mollusca?



[Watch Video Solution](#)

114. Name the organ which test the purity of water in mollusca.



[Watch Video Solution](#)

115. Name some cephalopods.



[Watch Video Solution](#)

116. What does Echinodermata mean?



Watch Video Solution

117. What does hemichordata mean?



Watch Video Solution

118. What are the common examples for the phylum Hemichordata?



Watch Video Solution

119. What are the three subphyla of phylum chordata?



Watch Video Solution

120. What are the two super classes of subphylum Gnathostomata?



Watch Video Solution

121. What does Urochordata mean?



Watch Video Solution

122. Why are Urochordata called tunicates?



Watch Video Solution

123. What does cephalochordata mean?



Watch Video Solution

124. What does vertebrata mean?



Watch Video Solution

125. Name some protective exoskeleton.



Watch Video Solution

126. What does cyclostomata mean?



Watch Video Solution

127. What is anadromous migration?



Watch Video Solution

128. What does chondrichthyes mean?



Watch Video Solution

129. What is heterocercal fin?



Watch Video Solution

130. What does osteichthyes mean?



Watch Video Solution

131. What does Amphibian mean?



Watch Video Solution

132. What does Reptilia mean?



Watch Video Solution

133. Do all reptiles have three chambered heart?



Watch Video Solution

134. What does Aves mean?



Watch Video Solution

135. What is pneumatic bone?



Watch Video Solution

136. What does mammalia mean?



Watch Video Solution

137. What are the unique features of mammals?



Watch Video Solution

138. What are the common fundamental features of multicellular animals?



Watch Video Solution

139. Write short notes on tissue level of organisation?



Watch Video Solution

140. What is diploblastic animals?



[Watch Video Solution](#)

141. What is asymmetrical animal?



[Watch Video Solution](#)

142. What is biradially symmetrical animals?



[Watch Video Solution](#)

143. What is protostomia?



Watch Video Solution

144. What is Deuterostomia?



Watch Video Solution

145. Write notes on polyps.



Watch Video Solution

146. Write about the medusa forms of Cnidarians.



Watch Video Solution

147. What does Ctenophora mean?



Watch Video Solution

148. What are the locomotory organs of Annelids?



[Watch Video Solution](#)

149. What are the respiratory organs of arthropods?



[Watch Video Solution](#)

150. What are the sense organs of the phylum Arthropoda?



[Watch Video Solution](#)

151. What are the common examples for the phylum Arthropoda?



Watch Video Solution

152. Name some economically important insects.



Watch Video Solution

153. What are the common examples for the phylum Arthropoda?



Watch Video Solution

154. Write short notes on spider silk



Watch Video Solution

155. Write short notes on *Conus marmoreus*.



Watch Video Solution

156. Write about the water vasculara system in Echinoderms.



Watch Video Solution

157. What are the common example for phylum echinodermata?



Watch Video Solution

158. What are the unique characteristics of chordates?



Watch Video Solution

159. Write short notes on notochord.



Watch Video Solution

160. Write short notes on nerve cord.



Watch Video Solution

161. Write short notes on pharyngeal gillslits in chordates.



Watch Video Solution

162. What are the classes of chordates?



Watch Video Solution

163. What are the characteristics of Agnatha?



[Watch Video Solution](#)

164. What are the characteristics of Gnathostomata?



[Watch Video Solution](#)

165. What are the common examples for class osteichthyes?



[Watch Video Solution](#)

166. What are the common examples for class amphibia?



Watch Video Solution

167. What are the common examples for class reptilia?



Watch Video Solution

168. What are the common examples for class Aves?



Watch Video Solution

169. Differentiate Turtle and Tortoise.



Watch Video Solution

170. Write brief notes on Diploblastic and Triploblastic with example.



[Watch Video Solution](#)

171. What is radial symmetry?



[Watch Video Solution](#)

172. What is bilateral symmetry?



[Watch Video Solution](#)

173. Write about the pseudocoel.



[Watch Video Solution](#)

174. Write about the eucoelom.



[Watch Video Solution](#)

175. Write notes on characteristics of phylum
Porifera.



[Watch Video Solution](#)

176. Write five characteristic features of Phylum Cnidaria?



Watch Video Solution

177. What are the characteristics of phylum Ctenophora.



Watch Video Solution

178. What are the general characteristics of phylum platyhelminthes?



Watch Video Solution

179. Write the general characters of the phylum aschelminthes.



Watch Video Solution

180. Write the general characters of the phylum annelida.



Watch Video Solution

181. Write the general characters of the phylum arthropoda.



Watch Video Solution

182. Write the general characters of the phylum mollusca.



Watch Video Solution

183. Write the general characters of the phylum echinodermata.



Watch Video Solution

184. Describe the structure of Balanoglossus



[Watch Video Solution](#)

185. What are the characteristics of phylum hemichordata?



[Watch Video Solution](#)

186. What are the characteristics of subphylum Urochordata?



[Watch Video Solution](#)

187. List out the characteristics of Cephalochordata ?



Watch Video Solution

188. Write the general character of the subphylum vertebrata.



Watch Video Solution

189. Write the general characters of the class Cyclostomata.



Watch Video Solution

190. What are the characteristics of class chondrichthyes?



Watch Video Solution

191. Write the general characters of the class
Amphibia.



Watch Video Solution

192. Write the general characters of the class
Aves.



Watch Video Solution

193. Write the general characters of the class Mammalia.



Watch Video Solution

194. What are the common examples for class mammalia?



Watch Video Solution

Exercise

1. Sea anemone belongs to phylum

A. Protozoa

B. Porifera

C. Coelenterata

D. Echinodermata

Answer:



Watch Video Solution

2. The respiratory pigment in cockroach is

A. Haemoglobin

B. Haemocyanin

C. Oxyhaemoglobin

D. Haemoerythrin

Answer:



Watch Video Solution

3. How many species are in the class Insecta?

A. 2- 8 million

B. 2- 10 million

C. 8 - 10 million

D. 6-8 million

Answer:



Watch Video Solution

4. Pneumatic bone is found in

A. Shark

B. Rana

C. Pigeon

D. Whale

Answer:



Watch Video Solution

5. What are flame cells?



Watch Video Solution

6. Compare Schizocoelom with Enterocoelom.



Watch Video Solution

7. What is mesoglea?



Watch Video Solution

8. What is hermaphrodite?



Watch Video Solution

9. What is sexual dimorphism?



[Watch Video Solution](#)

10. What are the four characteristics common to most animals?



[Watch Video Solution](#)

11. Observe the animal below and answer the following questions.

a. Identify the animal

b. What type of symmetry does this animal

exhibit?

c. Is this animal Cephalized?

d. How many germ layers does this animal have?

e. How many openings does this animal's digestive system have?

f. Does this animal have neurons?



[Watch Video Solution](#)

12. List three features that characterise bony fishes.



[Watch Video Solution](#)

13. Write short notes on *Conus marmoreus*.



[Watch Video Solution](#)

14. What are the unique characteristics of chordates?



[Watch Video Solution](#)

15. What is diploblastic animals?



[Watch Video Solution](#)

16. Compare closed and opened circulatory system.



[Watch Video Solution](#)

17. What is pneumatic bone?



[Watch Video Solution](#)

18. Describe the structure of Balanoglossus



Watch Video Solution

19. Write the general characters of the phylum arthropoda.



Watch Video Solution

20. The symmetry exhibited in Cnidarians is

A. Radial

B. Bilateral

C. Pentamerous radial

D. Asymmetrical

Answer:



Watch Video Solution

21. Sea anemone belongs to phylum

A. Protozoa

B. Porifera

C. Colelenterata

D. Echonodermata

Answer:



Watch Video Solution

22. The excretory cells that are found in platyhelminthes are

A. Protonephridia

B. Flame cells

C. Solenocytes

D. All of these

Answer:



Watch Video Solution

23. In which of the following organisms, self fertilization is seen.

A. Fish

B. Round worm

C. Earthworm

D. Liver fluke

Answer:



Watch Video Solution

24. Nephridia of Earthworms are performing the same functions as

A. Gills of prawn

B. Flame cells of planaria

C. Trachea of insects

D. Nematoblasts of Hydra

Answer:



Watch Video Solution

25. Which of the following animals has a true coelom ?

A. Ascaris

B. Pheretima

C. Sycon

D. Taenosa solium

Answer:



Watch Video Solution

26. Metameric segmentation is the main feature of

A. Annelida

B. Echinodermata

C. Arthropoda

D. Coelenterata

Answer:



Watch Video Solution

27. In Pheretima locomotion occurs with the help of

A. Circular muscles

B. Longitudinal muscles and setae

C. Circular, longitudinal muscles and setae

D. Parapodia

Answer:



Watch Video Solution

28. Which of the following have the highest number of species in nature?

A. Insects

B. Birds

C. Angiosperms

D. Fungi

Answer:



Watch Video Solution

29. Which of the following is a crustacean?

A. Prawn

B. Snail

C. Sea anemone

D. Hydra

Answer:



Watch Video Solution

30. The respiratory pigment in cockroach is

A. Haemoglobin

B. Haemocyanin

C. Oxyhaemoglobin

D. Haemoerythrin

Answer:



Watch Video Solution

31. Exoskeleton of which phylum consists of chitinous cuticle?

A. Annelida

B. Arthropoda

C. Porifera

D. Echinodermata

Answer:



Watch Video Solution

32. Lateral line sense organs occur in

A. Salamander

B. Water snake

C. Frog

D. Fish

Answer:



Watch Video Solution

33. The limbless amphibian is

A. Ichthyophis

B. Hyla

C. Rana

D. Crocodile

Answer:



[Watch Video Solution](#)

34. Four chambered heart is present in

A. Lizard

B. Scorpion

C. Snake

D. Crocodile

Answer:



[Watch Video Solution](#)

35. Which of the following is not correctly paired?

A. Humans-Ureotelic

B. Birds-Uricotelic

C. Lizards-Uricotelic

D. Whale-Ammonotelic

Answer:



Watch Video Solution

36. Which of the following is an egg laying mammal?

A. Delhimus

B. Macropus

C. Ornithorhynchys

D. Equus

Answer:



Watch Video Solution

37. Air sacs and pneumatic bones are seen in

.....

A. Mammalia

B. Aves

C. Reptilia

D. Sponges

Answer:



Watch Video Solution

38. Match the following columns and select the correct option.

Column - I		Column - II	
(p)	Pila	(i)	Devil fish
(q)	Dentalium	(ii)	Chiton
(r)	Chaetopleura	(iii)	Apple snail
(s)	Octopus	(iv)	Tusk shell

A. p-(ii),q-(i),r-(iii),s-(iv)

B. p-(iii),q-(iv),r-(ii),s-(i)

C. p-(ii),q-(iv), r-(i),s-(iii)

D. p-(iii),q-(ii),r-(iii),s-(iv)

Answer:



Watch Video Solution

39. In which of the following phyla, the adult shows radial symmetry but the larva shows bilateral symmetry?

- A. Mollusca
- B. Echinodermata
- C. Arthropoda
- D. Annelida

Answer:





[Watch Video Solution](#)

40. Which of the following is correctly matched?

- A. Physalia-Portuguese man of war
- B. Pennatul-Sea fan
- C. Adamsia-Sea pen
- D. Gorgonia-Sea anemone

Answer:



[Watch Video Solution](#)

41. In _____ animal phylum first time the organ level of organisation occurs.



Watch Video Solution

42. _____ is the highest level of organisation among the animals.



Watch Video Solution

43. ___phylum has simplest form of segmentation.



[Watch Video Solution](#)

44. ___ and ___phyla have segments.



[Watch Video Solution](#)

45. The common name of phylum porifera is



[Watch Video Solution](#)

46. Where are porifera commonly found?

- A. Rond water
- B. Marine water
- C. River water
- D. Contaminated water

Answer:



[Watch Video Solution](#)

47. _____ is the previous name of phylum Cnidaria.



[Watch Video Solution](#)

48. ___ and _____ are the two body forms of Cnidarians



[Watch Video Solution](#)

49. The symmetry of comb jellies is _____



[Watch Video Solution](#)

50. What is the name of larva produced by comb jellies?

- A. Cydippid larva
- B. Planula larva
- C. Scyphistoma larva
- D. Hydrula larva

Answer:



[Watch Video Solution](#)

51. The function of hooks of flatworms is _____



[Watch Video Solution](#)

52. _____ is previous name of phylum

Aschelminthes



[Watch Video Solution](#)

53. The outer layer of round worm is _



[Watch Video Solution](#)

54. The coelom present in round worms is

- A. Enterocoelom
- B. Schizocoelom
- C. Pseudocoelom
- D. True coelom

Answer:



[Watch Video Solution](#)

55. When filariasis was recorded in India?

A. As early as 6th century BC

B. 7th century BC

C. 8th century BC

D. 9th century BC

Answer:



Watch Video Solution

56. ____ described the signs and symptoms of filariasis.



[Watch Video Solution](#)

57. _____ identified elephantoid legs



[Watch Video Solution](#)

58. In 1872, ____ identified the microfilariae in peripheral blood



[Watch Video Solution](#)

59. _____ is the largest phylum of the kingdom Animalia.



[Watch Video Solution](#)

60. How many species are in the class Insecta?

A. 2-8 million

B. 2-10 million

C. 8-10 million

D. 6-8 million

Answer:



Watch Video Solution

61. _____ arthropod is called living fossil.



Watch Video Solution

62. The second largest phylum of the kingdom

Animalia is

A. Mollusca

B. Aschelminthes

C. Annelida

D. Echinodermata

Answer:



Watch Video Solution

63. _____ pigment is present in blood of mollusca



[Watch Video Solution](#)

64. __ is the Indian hemichordate.



[Watch Video Solution](#)

65. __ is the Indian hemichordate.



[Watch Video Solution](#)

66. _____ are called tunicates.



[Watch Video Solution](#)

67. Gill cover of fishes is called an _____



[Watch Video Solution](#)

68. How many chambers does a reptiles heart have?

- A. Two chambers
- B. Three chambers
- C. Four chambers
- D. Five chambers

Answer:



Watch Video Solution

69. Which is the state bird of Tamilnadu?



Watch Video Solution

70. ___ is the poisonous bird



[Watch Video Solution](#)

71. _____ is the neurotoxin found in Hooded pitohui



[Watch Video Solution](#)

72. Who is the birdman of India?

A. Salim Moizuddin Abdul Ali

B. John James

C. Ernst Mayr

D. Madavakara

Answer:



Watch Video Solution

73. Metamerism is characteristic of

A. Platyhelminthes

B. Mollusca

C. Porifera

D. Annelida

Answer:



Watch Video Solution

74. Level of structural organization found in Hydra is

A. Cellular

B. Acellular

C. Tissue

D. Organ system

Answer:



Watch Video Solution

75. An animal deviod of annus is ___

A. Unio

B. Fasciola

C. Pheretima

D. Periplaneta

Answer:



Watch Video Solution

76. Veliger larva occurs in phylum

A. Mollusca

B. Echinodermata

C. Arthropoda

D. Cnidaris

Answer:



Watch Video Solution

77. Which one of the following statement is wrong?

- A. Male round worm is smaller than female
- B. Earthworms are hermaphrodite

C. Echinoderms are protostomous
coelomates

D. Hair is derivative of skin

Answer:



Watch Video Solution

78. A chordate character is

A. Cilia

B. Post and tail

C. Spiracles

D. Chitinous exoskeleton

Answer:



Watch Video Solution

79. Malpighian tubules are

A. Excretory organs of insects

B. Excretory organs of annelids

C. Respiratory organs of insects

D. Respiratory organs annelids

Answer:



Watch Video Solution

80. Tube feet are the characteristic structures of

A. Starfish

B. Jelly fish

C. Crayfish

D. Cuttle fish

Answer:



Watch Video Solution

81. Which of the following is an example of platyhelminthes?

A. Plasmodium

B. Schistosoma

C. Trypanosoma

D. Wuchereria

Answer:



Watch Video Solution

82. Pneumatic bone is found in

A. Shark

B. Rana

C. Pigeon

D. Whale

Answer:



Watch Video Solution

83. Match the following list of animals with their level of organisation and choose the correct option.

A. Organ level - 1. Pheretima

B . Cellular level - 2. Fasciola

C. Tissue level - 3. Spongilla

D. Organs system level - 4. Hydra

Option

A. A-4,B-1,C-3,D-2

B. A-4,B-1,C-2,D-3

C. A-2B-3,C-4,D-1

D. A-1,B-4,C-3,D-2

Answer:



Watch Video Solution

84. The canal system is a characteristic feature of

A. Echinoderms

B. Sponges

C. Helminthes

D. Coelenterates

Answer:



Watch Video Solution

85. Match the column I with column II and choose the correct option

Column I **Column II**

- | | |
|------------------|--------------------------|
| A. Porifera | 1) Canal system |
| B. Aschelminthes | 2) Water vascular system |
| C. Annélida | 3) Muscular pharynx |
| D. Arthropoda | 4) Jointed appendages |
| E. Echinodermata | 5) Metameres |
| Options | . |

A. A-2,B-3,C-5,D-4,E-1

B. A-2,B-5,C-3,D-4,E-1

C. A-1,B-3,C-5,D-4,E-2

D. A-1,B-5,C-3,D-4,E-2

Answer:



Watch Video Solution

86. Coelom is found between

- A. Body wall and ectoderm
- B. Ectoderm and endoderm
- C. Mesoderm and body wall
- D. Mesoderm and ectoderm

Answer:



Watch Video Solution