



BIOLOGY

BOOKS - SARAS PUBLICATION

MODEL QUESTION PAPER-4

Exercise

1. Citric acid is produced by

A. *Aspergillus niger*

B. Candida

C. Penicillium notatum

D. Acetobacter xylinum

Answer:



Watch Video Solution

2. Endosperm in Gymnosperm is formed.

A. At the time of fertilization

B. Before fertilization

C. After fertilization

D. Along with the development of embryo

Answer:



Watch Video Solution

3. A true fruit is the one where

A. Only ovary of the flower develops into
fruit

- B. Ovary and calyx of the flower develops into fruit
- C. Ovary, calyx and thalamus of the flower develops into fruit
- D. All floral whorls of the flower develop into fruits.

Answer:



Watch Video Solution

4. What does the 'S' phase stand for?

- A. Slow phase
- B. Stop phase
- C. Synthesis phase
- D. Short phase

Answer:



Watch Video Solution

5. How many ATP molecules are produced in aerobic respiration in prokaryotes?

A. 38

B. 36

C. 24

D. None of these

Answer:



Watch Video Solution

6. Roots are

A. Descending, negatively geotropic,
positively phototropic

B. Descending, positively geotropic,
negatively phototropic

C. Ascending, positively geotropic,
negatively phototropic

D. Ascending, negatively geotropic,
positively phototropic

Answer:



Watch Video Solution

7. The mineral required for synthesis of IAA is

A. Copper

B. Magnesium

C. Zinc

D. Boron

Answer:



[Watch Video Solution](#)

8. Why lateral roots are endogenous?



[Watch Video Solution](#)

9. Where will you place the plants which contain two cotyledons with cup shaped thalamus?



[Watch Video Solution](#)

10. How is a dipeptide formed?



[Watch Video Solution](#)

11. Where is intercalary meristem found? Give example.



[Watch Video Solution](#)

12. Define diffusioni pressure deficit.



[Watch Video Solution](#)

13. What are NPK fertilizers ?



Watch Video Solution

14. Respiratory quotient is zero in succulent plants. Why ?



Watch Video Solution

15. Write any two demerits of Five Kingdom classification.



Watch Video Solution

16. State the protoplasm theory.



Watch Video Solution

17. Disitinguish between closed and open mitosis.



[Watch Video Solution](#)

18. A timber merchant bought 2 logs of wood from a forest & named A & B , The log A was 50 year old & B was 20 years old. Which log of wood will last longer for the merchant ? Why ?



[Watch Video Solution](#)

19. Define cataphylls



[Watch Video Solution](#)

20. Do you agree with the statement 'Bryophytes need water' for fertilization? Justify your answer.



Watch Video Solution

21. A tree says " I can live without you, But you cannot live without me". Is the statement true?

Give reasons on the basis of ecosystem.



Watch Video Solution

22. What do you mean by 'form genera'?



[Watch Video Solution](#)

23. How do molecular markers work to unlock the evolutionary history of organisms?



[Watch Video Solution](#)

24. Why is that in certain plants deficiency symptoms appear first in parts of the plants while in others, they do so in mature organs?



Watch Video Solution

25. What is cristae?



Watch Video Solution

26. Define phytoogerontology.



Watch Video Solution

27. Differentiate between aggregate fruit with multiple fruit.



Watch Video Solution

28. What are polymers?



Watch Video Solution

29. Distinguish the anatomy of dicot stem from monocot stem.



Watch Video Solution

30. How phosphorylase enzyme opens the stomata in starch-sugar interconversion theory?



Watch Video Solution

31. What are redox reactions ?



Watch Video Solution

32. The excretory cells that are found in platyhelminthes are

A. Protonephridia

B. Flame cells

C. Solenocytes

D. All of these

Answer:



Watch Video Solution

33. Which type of tissue correctly matches with its location?

Tissue	Location
1) <i>Cuboidal epithelium</i>	<i>Lining of stomach</i>
2) <i>Smooth muscle</i>	<i>Wall of intestine</i>
3) <i>Areolar tissue</i>	<i>Tendons</i>
4) <i>Transitional epithelium</i>	<i>Tip of nose</i>



Watch Video Solution

34. Match column I with column II and choose the correct option

Column I	Column II
(P) Small intestine	(i) Largest factory
(Q) Pancreas	(ii) Absorption of glucose
(R) Liver	(iii) Carrying electrolytic solution
(S) Colon	(iv) Digestion and absorption

A. (P-iv) (Q -iii) (R- i) (S — ii)

B. (P-iii) (Q -ii) (R- i) (S-iv)

C. (P-iv) (Q -iii) (R- i) (S -ii)

D. (P-ii) (Q -iv) (R- iii) (S-i)

Answer:



Watch Video Solution

35. What is the molecular weight of haemoglobin?

A. 68000

B. 86000

C. 66000

D. 60000

Answer:



Watch Video Solution

36. Match the following:

- | | |
|-------------|-------------------------|
| 1. Tapeworm | - a. Green glands |
| 2. Molluscs | - b. Malpighian tubules |
| 3. Prawns | - c. Protonephridia |
| 4. Insects | - d. Metanephridia |

A. 1.c 2. a 3. b 4. d

B. 1. c 2. d 3. a 4. b

C. 1. b 2. a 3. c 4. d

D. 1. d 2. c 3. a 4. b

Answer:



Watch Video Solution

37. Match the following human spinal nerves in column-I with their respective number in

column-II and choose the correct option.

	Column - I		Column - II
P	Cervical nerves	(i)	5 pairs
Q	Thoracic nerve	(ii)	1 pair
R	Lumbar nerve	(iii)	12 pairs
S	Coccygeal nerve	(iv)	8 pairs

A. (P-iv), (Q-iii), (R-i), (S-ii)

B. (P-iii),(Q-i), (R-ii), (S-iv)

C. (P-iv), (Q-i), (R-ii), (S-iii)

D. (P-ii), (Q-iv), (R-i), (S-iii)

Answer:



Watch Video Solution

38. Hypercalcemic hormone

A. Renin

B. Parathormone

C. Gastrin

D. Calcitriol

Answer:



Watch Video Solution

39. Match the following with correct sequence.

- | | |
|---------------------------|----------------------------|
| a. Leghorn | - i) America |
| b. Chittogong | - ii) Commercial
breed |
| c. White plymouth
rock | - iii) Ornamental
breed |
| d. Silkie | - iv) West bengal |

A. a - i b - ii c - iv d - iii

B. a - ii b - iv c - i d - iii

C. a - iii b - iv c - ii d - i

D. a - iv b - iii c - ii d - i

Answer:



Watch Video Solution

40. Why elephants and other wild animals are entering into human living area?



Watch Video Solution

41. What is hermaphrodite?



Watch Video Solution

42. What is meant by osmotic regulation?



Watch Video Solution

43. How is tetany caused?



Watch Video Solution

44. What are Catecholamines.



Watch Video Solution

45. What is Cardiac Cycle?



Watch Video Solution

46. Write notes on polyps.



Watch Video Solution

47. What is diploblastic animals?

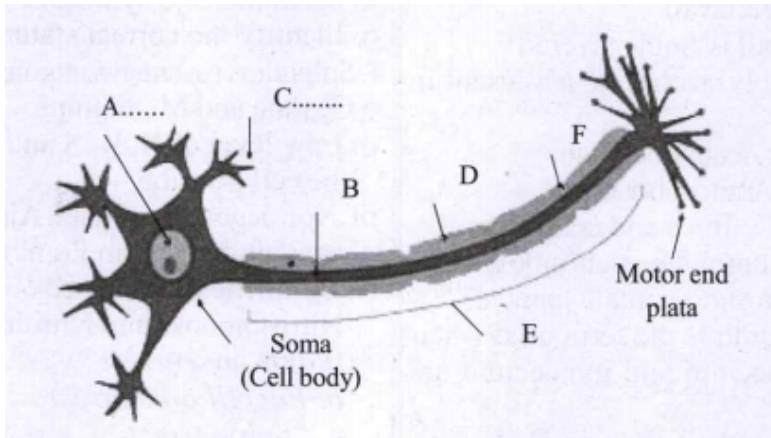


Watch Video Solution

48. Why do we consider blood as a connective tissue?

[▶ Watch Video Solution](#)

49. Label the parts of the neuron.



[▶ Watch Video Solution](#)

50. Write notes on Peyer's patches



Watch Video Solution

51. Write the steps involved in respiration.



Watch Video Solution

52. Differentiate nuptial flight from swarming.



Watch Video Solution

53. State the Law of Laplace.



Watch Video Solution

54. Explain the structure of alimentary canal?



Watch Video Solution

55. Explain the structure of nephron.



Watch Video Solution

56. (i)What is the structural and functional units of kidney? (ii)Draw its structure.
(iii)Describe it.



Watch Video Solution

57. Write notes on spinal cord.



Watch Video Solution

58. Write short notes on Hypothalamus.



Watch Video Solution

59. Describe the life cycle of *Bombyx mori*.

Life cycle of *Bombyx mori*:



Watch Video Solution