



BIOLOGY

BOOKS - SARAS PUBLICATION

Neural Control And Coordination

Example

1. What is neuron?



[Watch Video Solution](#)

2. What are neuroglia?



[Watch Video Solution](#)

3. What is nerve impulse?



[Watch Video Solution](#)

4. What is meant by action membrane potential.



[Watch Video Solution](#)

5. What is meant by threshold potential?



[Watch Video Solution](#)

6. What is called lazy gates?



[Watch Video Solution](#)

7. What is a Synapse?



[Watch Video Solution](#)

8. What is synaptic cleft?



Watch Video Solution

9. What is brain stem?



Watch Video Solution

10. Corpora quadrigemina



Watch Video Solution

11. What is choroid plexus?



Watch Video Solution

12. What is Cauda equina ?



Watch Video Solution

13. Define reflex arc.



Watch Video Solution

14. What is reflex action ? Explain the mechanism.



Watch Video Solution

15. What is meant by receptors?



Watch Video Solution

16. What is a nerve?



Watch Video Solution

17. What is ganglia?



Watch Video Solution

18. What are enteric plexuses?



Watch Video Solution

19. What is cataract?



[Watch Video Solution](#)

20. What is conjunctiva?



[Watch Video Solution](#)

21. What is 'accommodation of the human eye?



[Watch Video Solution](#)

22. What is maculae lutea?



Watch Video Solution

23. What is tectorial membrane?



Watch Video Solution

24. What is meant by stereocilia?



Watch Video Solution

25. What is otolith?



Watch Video Solution

26. What is Tactile Merkel's disc?



Watch Video Solution

27. What is Krause end bulbs?



Watch Video Solution

28. What is papillae?



Watch Video Solution

29. What is neurotransmitters?



Watch Video Solution

30. What is septum pellucidum?



Watch Video Solution

31. What is conjunctivities?



Watch Video Solution

32. What is Meissner's corpuscles?



Watch Video Solution

33. Define sensation.



Watch Video Solution

34. What is meant by reflex arc?



[Watch Video Solution](#)

35. Differentiate the functions of myelinated and non-myelinated neurons.



[Watch Video Solution](#)

36. Differentiate ECF and ICF in conduction of nerve impulses.



[Watch Video Solution](#)

37. Tabulate the difference between sympathetic and para sympathetic neural system.



Watch Video Solution

38. Differentiate unconditioned and conditioned reflex.



Watch Video Solution

39. Differentiate between rod and cone cells.



Watch Video Solution

40. Why is the blind spot called so ?



Watch Video Solution

41. Sam's optometrist tells him that his intraocular pressure is high. What is this

condition called and which fluid does it involve ?



[Watch Video Solution](#)

42. The action potential occurs in response to a threshold stimulus, but not at sub threshold stimuli. What is the name of the principle involved ?



[Watch Video Solution](#)

43. Cornea trasplant in human is almost never rejected state the reason.



Watch Video Solution

44. Pleasant smell fo food urged Ravi to Rush into the kitchen. Name the parts of the brain involved in the identification of food and emotional responses to odour.

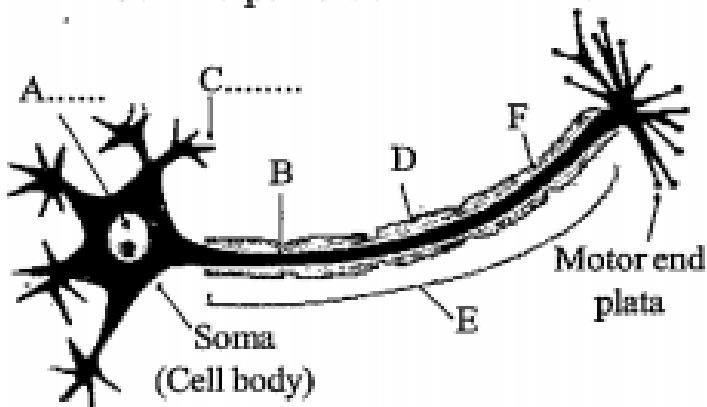


Watch Video Solution

45. At the end of repolarization, the nerve membrane gets hyperpolarized. Why ?

 [Watch Video Solution](#)

46. label the parts of the neuron.



 [Watch Video Solution](#)

47. What is the ANS controlling centre? Name the parts that are supplied by the ANS.



Watch Video Solution

48. Classify receptors based on type of stimuli.



Watch Video Solution

49. The choroid plexus secretes cerebrospinal fluid. List the function of it.



[Watch Video Solution](#)

50. Why the limbic system is called the emotional brain ? Name the parts of it.



[Watch Video Solution](#)

51. Name the first five cranial nerves, their nature and their functions.



[Watch Video Solution](#)

52. The sense of taste is considered to be the most pleasurable of all senses.

Describe the structure of the receptor involved with a diagram.



Watch Video Solution

53. Describe the structures of olfactory receptors.



Watch Video Solution

54. What are the two major divisions of human neural system?



Watch Video Solution

55. what is a neuron ?



Watch Video Solution

56. What is Neuroglia ? Mention its function ?



Watch Video Solution

57. Name the functional classes of Neurons.



Watch Video Solution

58. What are the three major parts of neuron.



Watch Video Solution

59. Differentiate the functions of myelinated and non-myelinated neurons.



Watch Video Solution

60. What is Axon hillock?



Watch Video Solution

61. What are Nodes of Ranvier?



Watch Video Solution

62. What is nerve impulse?



Watch Video Solution

63. What are the two main phases of transmission of impulses?



Watch Video Solution

64. List out the types of voltage gated channels.



Watch Video Solution

65. Tabulate the ionic channels in the axolemma.



Watch Video Solution

66. What is meant by action membrane potential.



Watch Video Solution

67. Which is the longest cell and longest axon in the human body?



Watch Video Solution

68. What is meant by threshold potential?



Watch Video Solution

69. List out the phases in action membrane potential.



[Watch Video Solution](#)

70. What is "all or none principle"?



[Watch Video Solution](#)

71. What is spike potential?



[Watch Video Solution](#)

72. What is called lazy gates?



Watch Video Solution

73. Which decides the speed of the conduction of a nerve impulse?



Watch Video Solution

74. What is a Synapse?



Watch Video Solution

75. What is Synaptic Cleft?



Watch Video Solution

76. Name the three regions of brain.



Watch Video Solution

77. Can you state why some areas of the brain and spinal cord are gray and some are white?



Watch Video Solution

78. Name the lobes of cerebrum.



Watch Video Solution

79. Name the two regions of fore brain.



Watch Video Solution

80. What is cerebral cortex?



Watch Video Solution

81. What is meant by sulcus and gyrus.



Watch Video Solution

82. What are the three paired structures of diencephalon?



Watch Video Solution

83. What is corpus callosum?



[Watch Video Solution](#)

84. What is brain stem ? Write its parts.



[Watch Video Solution](#)

85. Corpora quadrigemina



[Watch Video Solution](#)

86. What is choroid plexus?



[Watch Video Solution](#)

87. What is Cauda equina ?



[Watch Video Solution](#)

88. What are the two types of Autonomic neural system?



[Watch Video Solution](#)

89. Define reflex arc.



Watch Video Solution

90. What is reflex action ? Explain the mechanism.



Watch Video Solution

91. What are the two types of reflex?



Watch Video Solution

92. What are the components of peripheral neural system.



Watch Video Solution

93. What is meant by receptors?



Watch Video Solution

94. What is nerve?



Watch Video Solution

95. What is ganglia?



Watch Video Solution

96. What are enteric plexuses?



Watch Video Solution

97. Name the three layers of eyeball.



Watch Video Solution

98. What is sty?



Watch Video Solution

99. What are the three types of cells present on the neural retina?



Watch Video Solution

100. Write the two types of muscles present in iris?



Watch Video Solution

101. What is cataract?



Watch Video Solution

102. What is conjunctiva?



Watch Video Solution

103. What is accommodation?



Watch Video Solution

104. What is maculae lutea?



Watch Video Solution

105. What are the three ear ossicles.



Watch Video Solution

106. Name the chambers of the cochlea.



Watch Video Solution

107. What is tectorial membrane?



Watch Video Solution

108. What are the structures present in the membranous labyrinth?



[Watch Video Solution](#)

109. Name the membranes which separate the three chambers of cochlea?



[Watch Video Solution](#)

110. What is meant by stereocilia?



[Watch Video Solution](#)

111. What is otolith?



Watch Video Solution

112. What is Tactile Merkel's disc?



Watch Video Solution

113. What is Krause end bulbs?



Watch Video Solution

114. What is papillae?



Watch Video Solution

115. What is neurotransmitters?



Watch Video Solution

116. What is septum pellucidum?



Watch Video Solution

117. What are the accessory structures useful in protecting the eyes.



Watch Video Solution

118. Name the structures that helps in fixing eyes in the eyeball?



Watch Video Solution

119. When dust falls in our eyes, the eyelids close immediately not waiting for our willingness, on touching a hot pan, the hand is withdrawn rapidly. Do you know how this happens?



Watch Video Solution

120. Name the defects of retraction.



Watch Video Solution

121. Which is the most dynamic cell in the body? Why?



Watch Video Solution

122. How are defects of ear classified?



Watch Video Solution

123. What is conjunctivitis?



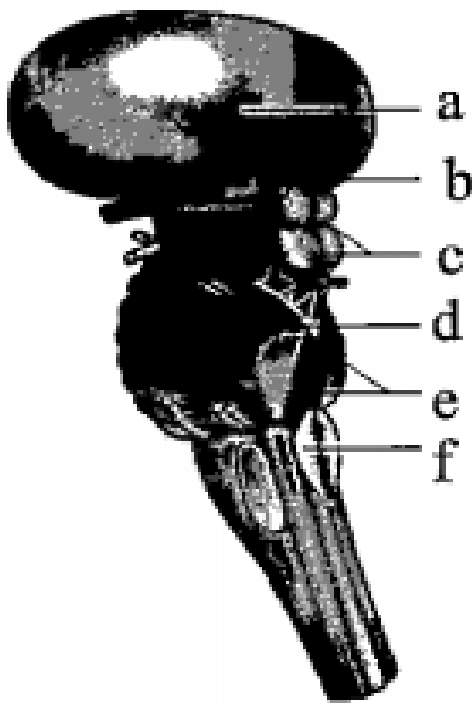
Watch Video Solution

124. What is the significance of melanin ?



Watch Video Solution

125. Identify the diagram given below and label its parts.



A

 [Watch Video Solution](#)

126. How neural system works in our body?

 [Watch Video Solution](#)

127. Damage to the medulla may cause the death of organism. How?



Watch Video Solution

128. What are the functions of neuroglia ?



Watch Video Solution

129. Classify neurons on the basis of number of axon and dendrites.



Watch Video Solution

130. Write a note on saltatory conduction.



Watch Video Solution

131. Differentiate ECF and ICF in conduction of nerve impulses.



[Watch Video Solution](#)

132. What are the basic functions of the neural system of higher animals?



[Watch Video Solution](#)

133. What are neurons? What are their functions.



[Watch Video Solution](#)

134. Write notes on repolarization.



Watch Video Solution

135. Write notes on depolarization.



Watch Video Solution

136. The body maintains a stable condition even when the outside environment changes.

How?





[Watch Video Solution](#)

137. What are the three cranial meninges?



[Watch Video Solution](#)

138. Name the functional areas of Cerebral cortex ?



[Watch Video Solution](#)

139. List out the functions of brain lobes.



Watch Video Solution

140. Why is thalamus considered as a relay centre for impulses?



Watch Video Solution

141. Name the functional deficiency of serotonin of norepinephrine. List their

symptoms and treatment to be given.



[Watch Video Solution](#)

142. What are the functional components of a reflex arc? Explain.



[Watch Video Solution](#)

143. Differentiate unconditioned and conditioned reflex.



[Watch Video Solution](#)

144. What is somatic neural system? Write its functions.



Watch Video Solution

145. Name the two components of autonomic nervous system.



Watch Video Solution

146. Brief notes on spinal nerves.



Watch Video Solution

147. Differentiate between rod and cone cells.



Watch Video Solution

148. List the causes for conductive deafness.



Watch Video Solution

149. What is Meissner's corpuscles?



Watch Video Solution

150. What are the main components of limbic system.



Watch Video Solution

151. How are receptors classified based on their position? Explain it?



Watch Video Solution

152. Give notes on pigments of colour vision.



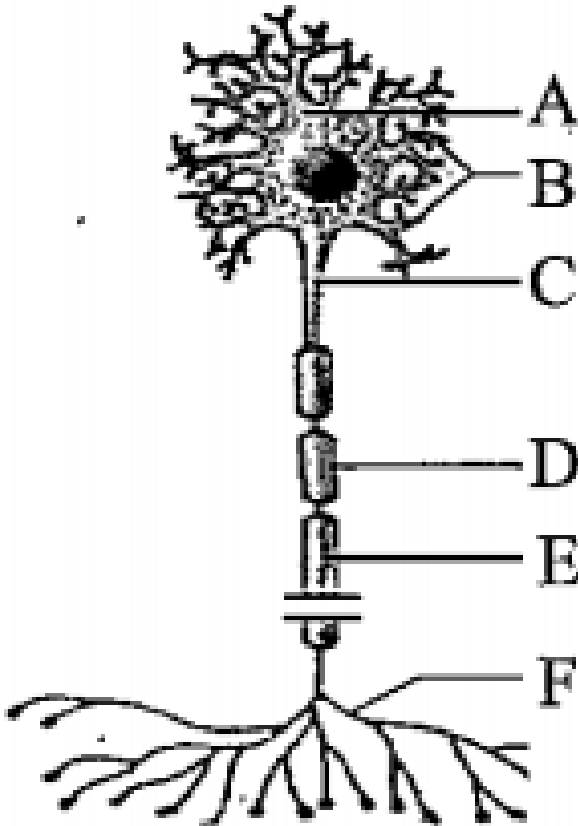
Watch Video Solution

153. What is meant by resting membrane potential?



Watch Video Solution

154. Identify what type of neuron is this and label the parts



Watch Video Solution

155. Identify the structure in the given figure.

Label the parts

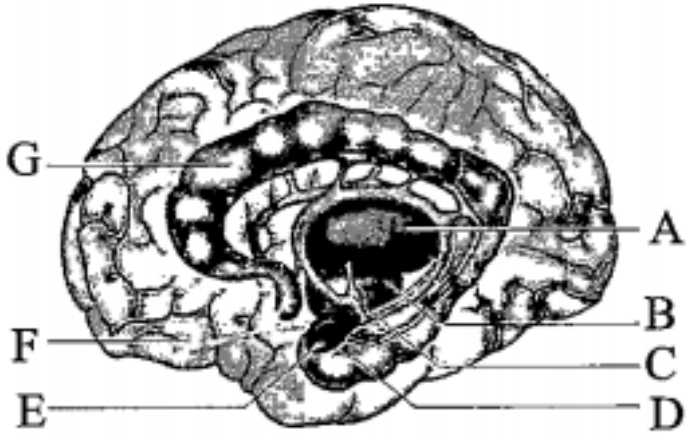


Fig.....

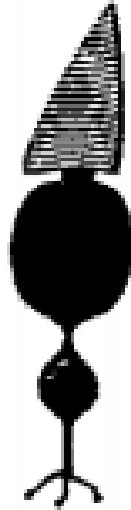


Watch Video Solution

156. Identify A and B Mention their significance.



A



B

A - Rod cell

B - Cone cell



Watch Video Solution

157. Name the parts of an organ of equilibrium involved in the following function:

Linear movement of the body



[Watch Video Solution](#)

158. Name the parts of an organ of equilibrium involved in the following function:

Changes in the body position



[Watch Video Solution](#)

159. Name the parts of an organ of equilibrium involved in the following function:

Rotational movement of the head



[Watch Video Solution](#)

160. Write notes on organ of corti.



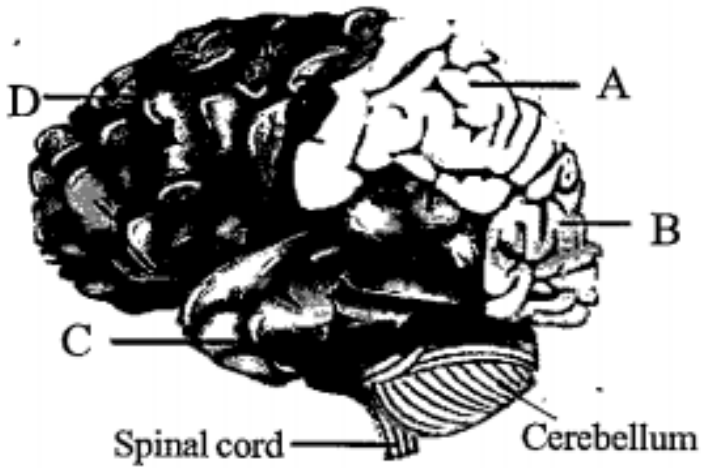
[Watch Video Solution](#)

161. Write notes on spinal cord.



[Watch Video Solution](#)

162. Identify the lobes in the given brain.



[▶ Watch Video Solution](#)

163. Define sensation. What are the events occurs for sensation to take place.

[▶ Watch Video Solution](#)

164. Tabulate the difference between sympathetic and para sympathetic neural system.



Watch Video Solution

165. Write short notes on epithalamus.



Watch Video Solution

166. Write short notes on Hypothalamus.



[Watch Video Solution](#)

167. Explain the refractive errors of eye.



[Watch Video Solution](#)

168. Write a short note on mechanism of hearing.



[Watch Video Solution](#)

169. Explain the structure of an ear.



Watch Video Solution

170. Explain the structure of human eye.



Watch Video Solution

171. Tabulate the Cranial nerves and its function.



Watch Video Solution

172. Explain the structure of a neuron.



Watch Video Solution

173. Write notes on Hind brain.



Watch Video Solution

174. Skin-sense of touch justify?



Watch Video Solution

175. How does the ear act as an organ of equilibrium ?



Watch Video Solution

176. Explain the mechanism of vision.



Watch Video Solution

177. Tabulate the functions of sympathetic and parasympathetic nerves.



Watch Video Solution

178. Define reflex arc.



Watch Video Solution

179. Give a brief account of ionic channels in the Axolemma.



[Watch Video Solution](#)

180. Explain the Ventricles of the brain.



[Watch Video Solution](#)

181. Explain C.S of spinal cord with neat diagram.



[Watch Video Solution](#)

1. The respiratory centre is present in the

A. Medulla oblongata

B. Hypothalamus

C. Cerebellum

D. Thalamus

Answer:



Watch Video Solution

2. Match the following human spinal nerves in column I with the irrespective number in column II and choose the correct option



- A. (P-iv),(Q-iii),(R-i), (S-ii)
- B. (P-iii),(Q-i), (R-ii), (S-iv)
- C. (P-iv),(Q-i), (R-ii), (S-iii)
- D. (P-ii), (Q-iv), (R-i), (S-iii)

Answer:



Watch Video Solution

3. Examine the diagram of the two cell types A and B given below and select the correct option



A. Cell-A is the rod cell found evenly all over retina

B. Cell-A is the cone cell more concentrated in the fovea centralis

C. Cell-B is concerned with colour vision in
bright light

D. Cell-A is sensitive to bright light
intensities

Answer:



Watch Video Solution

4. Longest cell in the human body

A. Neuron

B. Axons

C. Dendrites

D. Nissl's granules

Answer:



Watch Video Solution

5. The abundant intracellular cation is

A. H^+

B. K^+

C. Na^+

D. Ca^{++}

Answer:



Watch Video Solution

6. Why is the blind spot called so ?



Watch Video Solution

7. Sam's optometrist tells him that his intraocular pressure is high. What is this condition called and which fluid does it involve ?



Watch Video Solution

8. Can you state why some areas of the brain and spinal cord are gray and some are white?



Watch Video Solution

9. What is choroid plexus?



[Watch Video Solution](#)

10. What is maculae lutea?



[Watch Video Solution](#)

11. What is brain stem ? Write its parts.



[Watch Video Solution](#)

12. Why are we getting running nose while crying ?



Watch Video Solution

13. Differentiate unconditioned and conditioned reflex.



Watch Video Solution

14. What are the functions of neuroglia ?





[Watch Video Solution](#)

15. Label the parts of the neuron



[Watch Video Solution](#)

16. Pleasant smell fo food urged Ravi to Rush into the kitchen. Name the parts of the brain involved in the identification of food and emotional responses to odour.



[Watch Video Solution](#)

17. Name the first five cranial nerves, their nature and their functions.



Watch Video Solution

18. The choroid plexus secretes cerebrospinal fluid. List the function of it.



Watch Video Solution

19. What are the main components of limbic system.



Watch Video Solution

20. What is meant by resting membrane potential?



Watch Video Solution

21. Write notes on organ of corti.



[Watch Video Solution](#)

22. Which structure in ear converts pressure waves to action potentials ?

- A. Tympanic membrane
- B. Organ of Corti
- C. Oval window
- D. Semicircular canal

Answer:



[Watch Video Solution](#)

23. Which of the following pairings is correct ?

A. Sensory nerve- afferent

B. Motor nerve- afferent

C. Sensory nerve- ventral

D. Motor nerve-dorsal

Answer:



Watch Video Solution

24. During synaptic transmission of nerve impulse, neurotransmitter (P) is released from synaptic vesicles by the action of ions (Q). Choose the correct P and Q.

A. P = Acetylcholine, Q = Ca^{++}

B. P = Acetylcholine, Q = Na^{+}

C. P = GABA, Q = Na^{+}

D. P = Cholinesterase, Q = Ca^{++}

Answer:



Watch Video Solution

25. Examine the diagram of the two cell types A and B given below and select the correct option.



A. Cell-A is the rod cell found evenly all over retina

B. Cell-A is the cone cell more concentrated in the fovea centralis

C. Cell-B is concerned with colour vision in bright light

D. Cell-A is sensitive to bright light intensities

Answer:



Watch Video Solution

26. Assertion : In membrane the concentration of Na^{++} and K^{+} , and proteins generates action potential.

Reason : To maintain the unequal distribution of Na^{+} and K^{+} , the neurons use electrical energy.

A. Both Assertion and Reason are true and Reason is the correct explanation of the Assertion.

B. Both Assertion and Reason are true but the Reason is not the correct explanations of Assertion.

C. Assertion is true, but Reason is false.

D. Both Assertion and Reason are false.

Answer:



Watch Video Solution

27. Which part of the human brain is concerned with the regulation of body temperature ?

A. Cerebellum

B. Cerebrum

C. Medulla oblongata

D. Hypothalamus

Answer:



Watch Video Solution

28. The respiratory centre is present in the

A. Medulla oblongata

B. Hypothalamus

C. Cerebellum

D. Thalamus

Answer:



Watch Video Solution

29. Match the following human spinal nerves in column-I with their respective number in column-II and choose the correct option.

	Column - I		Column - II
P	Cervical nerves	(i)	5 pairs
Q	Thoracic nerve	(ii)	1 pair
R	Lumbar nerve	(iii)	12 pairs
S	Coccygeal nerve	(iv)	8 pairs

A. (P-iv),(Q-iii),(R-i),(S-ii)

B. (P-iii),(Q-i),(R-ii),(S-iv)

C. (P-iv),(Q-i),(R-ii),(S-iii)

D. (P-ii),(Q-iv),(R-i),(S-iii)

Answer:



Watch Video Solution

30. Which of the following cranial nerve controls the movement of eye ball ?

A. Trochlear nerve

B. Optic nerve

C. Olfactory nerve

D. Vagus nerve.

Answer:



31. The abundant intracellular cation is



Answer:



Watch Video Solution

32. Which of the following statements is wrong regarding conduction of nerve impulse ?

A. In a resting neuron, the axonal membrane is more permeable to K^+ ions and nearly impermeable to Na^+ ions.

B. Fluid outside the axon has a high concentration of Na^+ ions and low

concentration of K^+ , in a resting neuron.

C. Ionic gradient's are maintained by

$Na^+ K^+$ pumps across the resting membrane, which transport $3Na^+$ ions outwards for $2K^+$ into the cell.

D. A neuron is polarized only when the outer surface of the axonal membrane posses a negative a charge and its inner surface is positively charged.

Answer:



Watch Video Solution

33. All of the following are associated with the myelin sheath except

A. Faster conduction of nerve impulses

B. nodes of Ranvier forming gaps along the
axon

C. Increased energy output of nerve impulse conduction

D. Saltatory conduction of action potential

Answer:



Watch Video Solution

34. Several statements are given here in reference to cone cells. Which of the following options indicates all correct statements for cone cells?

Statement

- (i) Cone cells are less sensitive in bright light than Rod Cells
- (ii) They are responsible for colour vision
- (iii) Erythropsin is a photo pigment which is sensitive to red colour light
- (iv) They are present in fovea of retina

- A. (iii),(ii) and (i)
- B. (ii),(iii) and (iv)
- C. (i),(iii) and (iv)
- D. (i),(ii) and (iv)

Answer:



Watch Video Solution

35. Which of the following statements concerning the somatic division of the peripheral neural system is incorrect ?

- A. Its pathways innervate skeletal muscles
- B. Its pathways are usually voluntary
- C. Some of its pathways are referred to as reflex arcs

D. Its pathways always involved four neurons

Answer:



Watch Video Solution

36. When the potential across the axon membrane is more negative than the normal resting potential the neuron is said to be state of

A. Depolarization

B. Hyperpolarization

C. Repolarization

D. Hypopolarization

Answer:



Watch Video Solution

37. The neural system comprises of highly specialized cells called

A. Neurons

B. Sensory functions

C. Motor functions

D. Autonomic function

Answer:



Watch Video Solution

38. Transmits commands from the brains to the skeletal and muscular system.

A. Neural functions

B. Sensory functions

C. Motor functions

D. Autonomic function

Answer:



Watch Video Solution

39. Reflex actions are

A. Motor functions

B. Sensory functions

C. Autonomic functions

D. Neurons

Answer:



Watch Video Solution

40. Non-nervous special cells are called

A. Neuron

B. Neuroglia

C. Axolemma

D. Neurilemma

Answer:



Watch Video Solution

41. Neurons that take sensory impulses to the central neural system.

A. Afferent

B. Efferent

C. Interneurons

D. Axon

Answer:



Watch Video Solution

42. The efferent neurons carry impulses from the central nervous system to the effector organs.

A. Afferent

B. Efferent

C. Neuroglia

D. Axolemma

Answer:



Watch Video Solution

43. The plasma membrane covering the neuron is called

A. Neurilemma

B. Dendrites

C. Neuroglia

D. Axoglia

Answer:



Watch Video Solution

44. Plasma membrane covering the axon is called

A. Neurilemma

B. Axolemma

C. Nissl's granules

D. Axon hillock

Answer:



Watch Video Solution

45. Longest cell in the human body

A. Neurons

B. Axons

C. Dendrites

D. Nissl's granules

Answer:



Watch Video Solution

46. Granulated endoplasmic reticulum of a neuron is called

A. Neurilemma

B. Dendrites

C. Schwann cells

D. Nissl's granules

Answer:



Watch Video Solution

47. Axon is a long fibre that arises from a cone shaped area of the cell body called

A. Axolemma

B. Neuroglia

C. Axon hillock

D. Schwann cells

Answer:



Watch Video Solution

48. Where is Nissl's bodies seen in the nerve cell?

A. Cell body and dendrites

B. Cell body and axon

C. Cell body and myelin sheath

D. Cell body and end place of axon

Answer:



Watch Video Solution

49. Name the cell organelle which is not seen in the axons.

A. Mitochondria

B. Golgi apparatus

C. Centriole

D. Endoplasmic reticulum

Answer:



Watch Video Solution

50. each branch at the distal end of the axon terminates into a bulb like structure called

A. Myelin sheath

B. Synaptic knob

C. Neuro-muscular junction

D. Multipolar neurons

Answer:



Watch Video Solution

51. The axon transmits nerve impulses away from the cell body to

A. Myelin sheath

B. Synaptic knob

C. Neuro-muscular junction

D. Multipolar neuron

Answer:



Watch Video Solution

52. Name the gaps in the myelin sheath between adjacent Schwann cells

A. Nodes of Ranvier

B. Nodes of axon

C. Nodes of cyton

D. Nodes of dendrites

Answer:



Watch Video Solution

53. Neurons that have many processes with one axon and two or more dendrites

A. Multipolar

B. Bipolar

C. Unipolar

D. Polar

Answer:



Watch Video Solution

54. Neurons that have two processes with one axon and one dendrite

A. Multipolar

B. Bipolar

C. Unipolar

D. Polar

Answer:



Watch Video Solution

55. Neurons that have a single short process
and one axon

A. Polar

B. Bipolar

C. Unipolar

D. Multipolar

Answer:



Watch Video Solution

56. Neurons located in the ganglia of cranial and spinal nerves

A. Polar

B. Bipolar

C. Unipolar

D. Multipolar

Answer:



Watch Video Solution

57. Which is the electric potential difference across the plasma membrane of a resting neuron?

A. Bipolar neurons

B. Unipolar neurons

C. Intracellular neurons

D. Resting membrane potential

Answer:



Watch Video Solution

58. Match the following with correct answer

- | | |
|----------------------------|---|
| 1. Leakage channels | - a) Action membrane potential |
| 2. Ligand-gated channels | - b) Mechanically gated channels |
| 3. Voltage-gated channels | - c) Chemically gated channels |
| 4. Transmission of impulse | - d) Ionic channels that remain open all time |

A. 1-a 2-b 3-c 4-d

B. 1-d 2-c 3-b 4-a

C. 1-a 2-b 3-d 4-c

D. 1-b 2-c 3-a 4-d

Answer:



Watch Video Solution

59. Ionic channels that remain open all time

A. Leakage channels

B. Ligand gated channels

C. Voltage gated channels

D. Ionic potential

Answer:



Watch Video Solution

60. Where are unipolar neurons situated?

A. Spinal cord

B. Retina

C. Inner ear

D. Brain

Answer:



Watch Video Solution

61. Where are bipolar neurons situated?

A. Cranial nerves

B. Spinal nerves

C. Skin

D. Olfactory lobes of brain

Answer:



Watch Video Solution

62. Fluid found outside the axolemma

- A. Extracellular fluid
- B. Intracellular fluid
- C. Cellular fluid
- D. Nurilemma

Answer:



Watch Video Solution

63. The ionic gradient across the resting membrane is maintained by ATP driven

- A. Sodium-potassium pump
- B. Depolarization
- C. Threshold potential
- D. All or none principle

Answer:



64. Which of the following phase is not included in action membrane potetial

- A. Depolarization
- B. Repolarization
- C. Hypopolarization
- D. Hyperpolarization

Answer:



65. The reversal of electric charge is called

- A. Depolarization
- B. Repolarization
- C. Hypopolarization
- D. Hyperpolarization

Answer:



Watch Video Solution

66. During hyperpolarization, K^+ ion gates are more permeable to K^+ even after reaching the threshold level as it closes slowly. It is called as

- A. Resting state
- B. Lazygates
- C. Nodes of Ranvier
- D. Saltatory conduction

Answer:



Watch Video Solution

67. The action potential occurs in response to a threshold stimulus, but not at sub threshold stimuli. What is the name of the principle involved ?

- A. Lazy gates
- B. All or none principle
- C. Spike potential
- D. Saltatory conduction

Answer:



Watch Video Solution

68. The voltage gates Na^+ and K^+ channels are concentrated at the

A. Saltatory conduction

B. Lazy gates

C. Nodes of Ranvier

D. All or none principle

Answer:



Watch Video Solution

69. Junction between two neurons

- A. Nodes of Ranvier
- B. Axons
- C. Saltatory conduction
- D. Synapse

Answer:



Watch Video Solution

70. Which is called as falling phase?

- A. Repolarization
- B. Depolarization
- C. Hyperpolarization
- D. Hypopolarization

Answer: A



Watch Video Solution

71. The membrane potential return to its original resting state when K^+ ions channels close completely.

- A. Repolarization
- B. Depolarization
- C. Hyperpolarization
- D. Nodes of Ranvier

Answer:



Watch Video Solution

72. The axon terminals contain synaptic vesicles filled with

- A. Neurons
- B. Neurotransmitters
- C. Synaptic cleft
- D. Synaptic vesicles

Answer:



Watch Video Solution

73. In the neurilemma, the synaptic vesicles release neurotransmitters into the synaptic cleft by

A. Exocytosis

B. Endocytosis

C. Inhibitory

D. Excitatory

Answer:



Watch Video Solution

74. _____ acts as a command and control system.

A. Brain

B. Heart

C. Kidney

D. Lungs

Answer:



Watch Video Solution

75. Small gap between pre and post synaptic membranes is called

- A. Synapse
- B. Synaptic cleft
- C. Synaptic vesicle
- D. Exocytosis

Answer:



Watch Video Solution

76. First neuron involved in synapse formation

- A. Pre-synaptic neuron
- B. Post-synaptic neuron
- C. Exocytosis
- D. Synaptic cleft

Answer:



Watch Video Solution

77. Second neuron involved in the synapse formation

- A. Pre-synaptic neuron
- B. Post-synaptic neuron
- C. Neurotransmitters
- D. Synaptic cleft

Answer:



Watch Video Solution

78. Central neural system includes

- A. Brain and heart
- B. Brain and lungs
- C. Brain and spinal cord
- D. None

Answer:



Watch Video Solution

79. Outer layer of brain

A. Dura mater

B. Arachnoid mater

C. Subdural space

D. Pia mater

Answer:



Watch Video Solution

80. Inner most layer in brain

A. Dura mater

B. Arachnoid mater

C. Pia mater

D. Cerebrum

Answer:



Watch Video Solution

81. Which is called as seat of intelligence?

A. Cerebrum

B. Cerebellum

C. Diencephalon

D. Prosencephalon

Answer:



Watch Video Solution

82. Superficial region of the cerebrum

A. Diencephalon

B. Dura mater

C. Cerebral cortex

D. Gyri

Answer:



Watch Video Solution

83. Which is known as fore brain?

A. Cerebrum

B. Diencephalon

C. Cerebral cortex

D. (a) and (b)

Answer:



Watch Video Solution

84. Median thin layer of brain

- A. Dura mater
- B. Pia mater
- C. Arachnoid mater
- D. Subarachnoid mater

Answer:



Watch Video Solution

85. The cerebral hemispheres are connected by a tract of nerve fibres called

- A. Cerebrum
- B. Cerebellum
- C. Corpus callosum
- D. Association areas

Answer:



86. The areas other than sensory and motor areas in cerebral cortex are called

- A. Cerebrum
- B. Dissociation areas
- C. Corpus callosum
- D. Association areas

Answer:



87. _____ forms the roof of the diencephalon.

A. Epithalamus

B. Choroid plexus

C. Pineal body

D. Melatonin

Answer:



Watch Video Solution

88. The folds on the surface of the cerebrum are called

A. Gyri

B. Sulcus

C. Fissures

D. Grooves

Answer:



Watch Video Solution

89. The surface of the cerebrum shows many shallow grooves called

A. Gyri

B. Sulci

C. Fissures

D. Dendrites

Answer:



Watch Video Solution

90. Which regulates sleep wake cycle

A. Epithalamus

B. Indundibulum

C. Pineal body

D. Melatonin

Answer:



Watch Video Solution

91. Which acts as a nerve tract between cortex and diencephalon

A. Cortex

B. Medulla

C. Pineal body

D. Corpus callosum

Answer:



Watch Video Solution

92. Which acts as a satiety centre?

A. Hypothalamus

B. Limbic system

C. Brain stem

D. Thalamus

Answer:



Watch Video Solution

93. It acts as a reflex centre for vision and hearing

A. Corpora quadrigemina

B. Cerebellum

C. Pons varolii

D. Medulla oblongata

Answer:



Watch Video Solution

94. the_____is the second largest part of the brain.

- A. Cerebrum
- B. Cerebellum
- C. Pons varolii
- D. Medulla

Answer:



Watch Video Solution

95. Lateral ventricles communicate with the narrow third ventricle in diencephalon through an opening called

- A. Septum pellucidum
- B. Interventricular foramen
- C. CSF
- D. Cerebral aqueduct

Answer:



Watch Video Solution

96. _____ is a network of blood capillaries from cerebrospinal fluid

- A. Cerebral aqueduct
- B. Septum pellucidum
- C. Choroid plexus
- D. Foramen of monro

Answer:



Watch Video Solution

97. Third ventricle is connected with fourth ventricle in the hind brain through a canal called

- A. cerebral aqueduct
- B. Septum pellucidum
- C. Choroid plexus
- D. Foramen of monro

Answer:



Watch Video Solution

98. The thick bundle of elongated nerve roots within the lower vertebral canal is called

- A. Choroid plexus
- B. Cerebral aqueduct
- C. Cauda equina
- D. Septum pellucidum

Answer:



Watch Video Solution

99. Functional nervous structure between the brain and effector organs.

A. Spinal cord

B. Reflex arc

C. Pons

D. Medulla

Answer:



Watch Video Solution

100. The pathway followed by a nerve impulse to produce a reflex action

A. Spinal cord

B. Neuron

C. Reflex arc

D. Unconditioned reflex

Answer:



Watch Video Solution

101. Blinking of eye when a dust particle fall into it is an example of

- A. Conditioned reflex
- B. Unconditional reflex
- C. Reflex arc
- D. Reflex action

Answer:



Watch Video Solution

102. Pavlov did his classical conditioning experiment in a

A. Cat

B. Dog

C. Bat

D. Cow

Answer:



Watch Video Solution

103. Which is the sensory structure that responds to a specific stimulus?

A. Sensory receptor

B. Sensory neurons

C. Interneuron

D. Motor neuron

Answer:



Watch Video Solution

104. Which is an inborn reflex for an unconditioned stimulus

- A. Unconditioned reflex
- B. Conditioned reflex
- C. Cerebral cortex
- D. Receptor

Answer:



Watch Video Solution

105. Which is a response to the stimulus that has been acquired by learning

A. Unconditioned reflex

B. Conditioned reflex

C. Cerebral cortex

D. Receptor

Answer:



Watch Video Solution

106. The conditioned reflex was first demonstrated by

A. Robert

B. Pavlov

C. vagus

D. Niechel

Answer:



Watch Video Solution

107. _____ controls conditioned reflex

A. Cerebral cortex

B. Spinal cord

C. Medulla

D. Pons

Answer:



Watch Video Solution

108. _____ helps in rotation of eye ball.

- A. Abducens nerve
- B. Auditory nerve
- C. Vagus nerve
- D. hyoglossal nerve

Answer:



Watch Video Solution

109. Glossopharyngeal neerve function as

- A. Rotation of eyeball
- B. Speech and swallowing
- C.
- D. Functioning of facial parts

Answer:



Watch Video Solution

110. Total CSF volume in adult is

A. 100 ml

B. 150 ml

C. 200 ml

D. 500 ml

Answer:



Watch Video Solution

111. How much ml of CSF is formed daily?

A. 150

B. 400

C. 250

D. 500

Answer:



Watch Video Solution

112. There are _____ pair of spinal nerves.

A. 30

B. 31

C. 40

D. 41

Answer:



Watch Video Solution

113. Match and find the correct species.

. Match and find the correct series

- | | |
|---------------------|---------------|
| 1. Cervical nerves | - a) 5 pairs |
| 2. Thoracic nerves | - b) 5 pairs |
| 3. Lumbar nerves | - c) 1 pair |
| 4. Sacral nerves | - d) 8 pairs |
| 5. Coccygeal nerves | - e) 12 pairs |

A. 1-d 2- 3-a 4-b 5-c

B. 1-e 2-c 3-b 4-d 5-a

C. 1-a 2-b 3-c 4-d 5-e

D. 1-e 2-d 3-c 4-b 5-a

Answer:



Watch Video Solution

114. How many pairs of cranial nerves are there in Peripheral Nervous System?

A. 18

B. 16

C. 12

D. 31

Answer:



Watch Video Solution

115. Part of peripheral neural system associated with voluntary control of body movements via skeletal system

- A. Somatic neural system
- B. Autonomic neural system
- C. Sympathetic neural system
- D. Parasympathetic system

Answer:





[Watch Video Solution](#)

116. Neuron whose cell body is in the brain or spinal cord.

- A. Autonomic neural system
- B. Postganglionic neuron
- C. Preganglionic neuron
- D. Sympathetic neuron

Answer:



[Watch Video Solution](#)

117. Neuron that conveys nerve impulses from autonomic ganglia to visceral effector organs.

- A. Autonomic ganglion
- B. Postganglionic neuron
- C. Preganglionic neuron
- D. Autonomic neural system

Answer:



Watch Video Solution

118. It is considered as “The Rest and Digest system”.

A. Parasympathetic neural system

B. Sympathetic neural system

C. Autonomic neural system

D. Somatic neural system

Answer:



Watch Video Solution

119. Its is considered as flight or fight system

- A. Sympathetic neural system
- B. Parasympathetic neural system
- C. Peripheral neural system
- D. Autonomic neural system

Answer:



Watch Video Solution

120. The sebaceous glands at the base of eyelashes are calledglands.

A. Lacrymnal glands

B. Ciliary glands

C. Exteroceptors

D. Interoceptors

Answer:



Watch Video Solution

121. Glands responsible for secreting tears are

.....

A. Ciliary

B. Sebaceous

C. Lacrymal

D. None

Answer:



Watch Video Solution

122. Tears contains

A. Salt

B. Mucus

C. Lysozyme

D. All the above

Answer:



Watch Video Solution

123. Receptors that are located in the visceral organs and blood vessels.

- A. Interoceptors
- B. Exteroceptors
- C. Proprioceptors
- D. All the above

Answer:



Watch Video Solution

124. Receptors that are sensitive to external stimuli

- A. Interoceptors
- B. Exteroceptors
- C. Proprioceptors
- D. All the above

Answer:



Watch Video Solution

125. Which channel drains out the excess of aqueous humor at the junction of sclera and the cornea.

- A. Canal of Schlemm
- B. Choroid
- C. Intraocular pressure
- D. None

Answer:



Watch Video Solution

126. Coloured portion of the eye lying between the cornea and lens.

A. Sclera

B. Choroid

C. Retina

D. Iris

Answer:



Watch Video Solution

127. Inner most layer of eye.

A. Cone

B. Rod

C. Iris

D. Retina

Answer:



Watch Video Solution

128. Smooth muscle present in the ciliary body is called

- A. Ciliary muscle
- B. Aqueous humor
- C. Sphincter pupillae
- D. Dilator pupillae

Answer:



Watch Video Solution

129. The ability of the eyes to focus objects at varying distances is called

- A. Retina
- B. Canal of schlemm
- C. Ciliary body
- D. Accommodation

Answer:



Watch Video Solution

130. Hypermetropia is also known as

- A. Long sightedness
- B. Short sightedness
- C. Catract
- D. Glaucoma

Answer:



Watch Video Solution

131. Myopia is also known as

A. Long sightedness

B.

C. Catract

D. Glaucoma

Answer:



Watch Video Solution

132. Yellow flat spot present at the centre of posterior region of the retina is called

- A. Macula lutea
- B. Fovea centralis
- C. Aqueous humor
- D. Retinal

Answer:



Watch Video Solution

133. Small depression present in the centre of yellow spot in retina is

- A. Macula lutea
- B. Fovea centralis
- C. Blind spot
- D. Opsin

Answer:



Watch Video Solution

134. Derivative of vitamin -A

A. Opsin

B. Retinal

C. Macula lutea

D. None

Answer:



Watch Video Solution

135. Which lens are used to correct presbyopia

A. Concave

B. Convex

C. Hypermetropic

D. Myopic

Answer:



Watch Video Solution

136. Wax producing glands present in the external auditory meatus

- A. Ciliary gland
- B. Ciliary body
- C. Ceruminous gland
- D. Tympanic gland

Answer:



Watch Video Solution

137. Due to the changes in nature of protein, the lens becomes opaque is

- A. Cataract
- B. Eustachian tube
- C. Perilymph
- D. Vestibule

Answer:



Watch Video Solution

138. It is a small air filled cavity in the temporal bone

A. Tympanic cavity

B. Pinna

C. External ear

D. Ear drum

Answer:



Watch Video Solution

139. Tube that connects middle ear cavity with pharynx

A. Eustachian tube

B. Vestibule tube

C. Ear ossicles

D. Endolymph

Answer:



Watch Video Solution

140. Match and find the correct series

- | | |
|----------------------|-------------------|
| 1. Malleus | - a) Anvil bone |
| 2. Incus | - b) Ear drum |
| 3. Stapes | - c) Hammer bone |
| 4. Tympanic membrane | - d) Stirrup bone |

A. 1-c 2-b 3-a 4-d

B. 1-c 2-a 3-d 4-b

C. 1-d 2-c 3-b 4-a

D. 1-a 2-b 3-c 4-d

Answer:





Watch Video Solution

141. The scala vestibuli and scala media are separated by a membrane called

- A. Endolymph
- B. Stereocilia
- C. Basilar membrane
- D. Tectorial membrane

Answer:



Watch Video Solution

142. each branch at the distal end of the axon terminates into a bulb like structure called

- A. Endolymph
- B. Stereocilia
- C. Organ of corti
- D. Cochlea

Answer:



Watch Video Solution

143. Hair like structures protruding from the apical part of each hair cell is known as

- A. Stereocilia
- B. Eustachian tube
- C. Scala vestibuli
- D. Cochlea

Answer:



Watch Video Solution

144. The intensity of sound is measured in

A. Wavelength

B. Intensity

C. Decibels

D. Frequency

Answer:



Watch Video Solution

145. Defect may be in the organ of cortior
auditory nerve

A. Sensory-neural deafness

B. Otoliths

C. crista ampullairs

D. Cehmoreceptors

Answer:



Watch Video Solution

146. Organ of balance located in the inner ear next to the cochlea

- A. Vestibular system
- B. Otoliths
- C. Proprioception
- D. Crista ampullaris

Answer:



Watch Video Solution

147. Small calcareous particles present in otolithic membrane

A. Ampulla

B. Maculae

C. Otoliths

D. Organ of corti

Answer:



Watch Video Solution

148. Each ampulla has a sensory area known as

A. Otoliths

B. Maculae

C. Vestibular system

D. Crista ampullaris

Answer:



Watch Video Solution

149. The receptors of taste and smell are called

.

- A. Interoceptors
- B. Chemoreceptors
- C. Gustatory receptor
- D. Exteroceptors

Answer:



Watch Video Solution

150. Tongue is provided with small projections called

A. Basal cells

B. Papillae

C. Maculae

D. Ampulla

Answer:



Watch Video Solution

151. Teste buds consists of ____ epithelial cells

- A. 50-100
- B. 150-200
- C. 150-350
- D. 50-400

Answer:



Watch Video Solution

152. Sensitive portion of the gustatory cells

A. Gustatory epithelial cells

B. Gustatory hairs

C. Basal epithelial cells

D. Repairing cells

Answer:



Watch Video Solution

153. Largest sense organ

A. Skin

B. Tongue

C. Nose

D. Ear

Answer:



Watch Video Solution

154. Large egg shaped receptors found scattered deep in the dermis

A. Meissner's corpuscles

B. Hair follicle receptors

C. Pacinian corpuscles

D. Tactile Merkel's disc

Answer:



Watch Video Solution

155. Small light pressure receptors found beneath the epidermis in dermal papillae

- A. Pacinian corpuscles
- B. Meissner's corpuscles
- C. Krause and bulbs
- D. tactile merkel disc

Answer:



Watch Video Solution

156. which lie in the dermis respond to continuous pressure.

- A. Krause end bulbs
- B. Tactile Merkel's disc
- C. Ruffini endings
- D. Pacinian corpuscles

Answer:



Watch Video Solution

157. are thermoreceptors that sense temperature.

- A. Krause end bulbs
- B. Ruffini endings
- C. Tactile Merkel's disc
- D. Hair follicle receptors

Answer:



Watch Video Solution

158. Light touching receptors lying in the deeper layer of epidermis

A. Meissner's corpuscles

B. Tactile Merkel's disc

C. Pacinian corpuscles

D. Ruffini endings

Answer:



Watch Video Solution

159. Vitiligo is also known as

- A. Leucoderma
- B. Leukemia
- C. Root hair plexus
- D. Meissner's corpuscles

Answer:



Watch Video Solution

160. Conscious awareness of changes in external or internal environment

A. Sensation

B. Chemoreceptors

C. Vestibular system

D. Otoliths

Answer:



Watch Video Solution

161. The ability to sense stimuli arising within the body regarding position, motion and equilibrium

A. Proprioception

B. Interception

C. Extrareception

D. All the above

Answer:



Watch Video Solution

162. Which of the following pairings is correct ?

A. Sensory nerve-afferent

B. Motor nerve- afferent

C. Sensory nerve- ventral

D. Motor nerve-dorsal

Answer:



Watch Video Solution

163. Examine the diagram of the two cell types A and B given below and select the correct option.



A. Cell-A is the rod cell found evenly all over retina

B. Cell-A is the cone cell more concentrated in the fovea centralis

C. Cell-B is concerned with colour vision in bright light

D. Cell-A is sensitive to bright light intensities

Answer:



Watch Video Solution

164. Assertion : In membrane the concentration of Na^{++} and K^{+} , and proteins generates action potential.

Reason : To maintain the unequal distribution of Na^{+} and K^{+} , the neurons use electrical energy.

A. Both Assertion and Reason are true and Reason is the correct explanation of the Assertion.

B. Both Assertion and Reason are true but the Reason is not the correct explanations of Assertion.

C. Assertion is true, but Reason is false.

D. Both Assertion and Reason are false.

Answer:



Watch Video Solution

165. The respiratory centre is present in the

A. Medulla oblongata

B. Hypothalamus

C. Cerebellum

D. Thalamus

Answer:



Watch Video Solution

166. Match the following human spinal nerves in column-I with their respective number in

column-II and choose the correct option.

	Column - I		Column - II
P	Cervical nerves	(i)	5 pairs
Q	Thoracic nerve	(ii)	1 pair
R	Lumbar nerve	(iii)	12 pairs
S	Coccygeal nerve	(iv)	8 pairs

A. (P-iv), (Q-iii), (R-i), (S-ii)

B. (P-iii), (Q-i), (R-ii), (S-iv)

C. (P-iv), (Q-i), (R-ii), (S-iii)

D. (P-ii), (Q-iv) (R-i), (.S-iii)

Answer:



Watch Video Solution

167. The abundant intracellular cation is



Answer:



Watch Video Solution

168. When the potential across the axon membrane is more negative than the normal resting potential the neuron is said to be state of

- A. Depolarization
- B. Hyperpolarization
- C. Repolarization
- D. Hypopolarization

Answer:



Watch Video Solution

169. Longest cell in the human body

- A. Neurons
- B. Axons
- C. Dendrites
- D. Nissil's granules

Answer:



Watch Video Solution

170. Name the cell organelle which is not seen in the axons.

A. Mitochondria

B. Golgi apparatus

C. Centriole

D. Endoplasmic reticulum

Answer:



Watch Video Solution

171. The pathway followed by a nerve impulse to produce a reflex action

A. Spinal cord

B. Neuron

C. Reflex arc

D. Unconditioned reflex

Answer:



Watch Video Solution

172. Why is the blind spot called so ?



Watch Video Solution

173. Sam's optometrist tells him that his intraocular pressure is high. What is this condition called and which fluid does it involve ?



Watch Video Solution

174. The action potential occurs in response to a threshold stimulus, but not at sub threshold stimuli. What is the name of the principle involved ?



Watch Video Solution

175. Can you state why some areas of the brain and spinal cord are gray and some are white?



Watch Video Solution

176. What is meant by sulcus and gyrus.



Watch Video Solution

177. Draw the diagram of brain stem and label the parts.



Watch Video Solution

178. What is choroid plexus?



Watch Video Solution

179. What is maculae lutea?



Watch Video Solution

180. What is tectorial membrane?



Watch Video Solution

181. Why are we getting running nose while crying ?





[Watch Video Solution](#)

182. Pleasant smell fo food urged Ravi to Rush into the kitchen. Name the parts of the brain involved in the identification of food and emotional responses to odour.



[Watch Video Solution](#)

183. Label the parts of the neuron.



[Watch Video Solution](#)

184. What is the ANS controlling centre.



Watch Video Solution

185. Classify receptors based on type of stimuli.



Watch Video Solution

186. What are the functions of neuroglia ?



Watch Video Solution

187. Write a note on saltatory conduction.



Watch Video Solution

188. The body maintains a stable condition even when the outside environment changes.

How?



Watch Video Solution

189. What are the three cranial meninges?



Watch Video Solution

190. The sense of taste is considered to be the most pleasurable of all senses.

Describe the structure of the receptor involved with a diagram.



Watch Video Solution

191. Describe the structures of olfactory receptors.



Watch Video Solution

192. The choroid plexus secretes cerebrospinal fluid. List the function of it.



Watch Video Solution

193. Tabulate the difference between sympathetic and para sympathetic neural system.



Watch Video Solution

194. Explain the mechanism of hearing.



Watch Video Solution

195. Explain the structure of an ear.



[Watch Video Solution](#)

196. Tabulate the Cranial nerves and its function.



[Watch Video Solution](#)