



# BIOLOGY

## BOOKS - CBSE MODEL PAPER

### PRACTICE PAPER 2022

#### Multiple Choice Question

1. Which of the following represent the male gametophyte in flowering plants?

A. stamen

B. anther

C. pollen sac

D. pollen grain

**Answer: D**



**Watch Video Solution**

2. Viola plants represent the largest genus of cleistogamous flowers.

Which of the following is NOT a requirement for Viola plants to assure propagation?

A. flowering

B. fertilisation

C. bisexual flowers

D. external pollinators

**Answer: D**



**Watch Video Solution**

3. In some species of flowering plants, fruits develop without the process of fertilisation.

Which of these can be an identifying factor of such fruits?

- A. They are not developed from the ovary.
- B. They are always composite.
- C. They are always seedless.
- D. They are not juicy.

**Answer: C**



Watch Video Solution

4. Which of these statements about food storage in seeds is/ are TRUE

1: It is stored in the endosperm in albuminous seeds.

2: It is stored in the cotyledons in albuminous seeds.

3: It is stored in the cotyledons in ex-albuminous seeds.

4: It is stored in the endosperm in the ex-albuminous seeds.

A. only 1

B. only 2

C. only 1 and 3

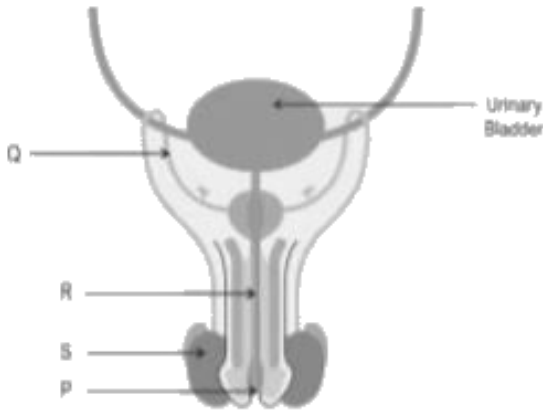
D. only 2 and 4

**Answer: C**



**Watch Video Solution**

**5.** Look at the labelled diagram of the male reproductive system.



Identify the correct route of passage of sperm in the male reproductive tract.

A.  $P - Q - R - S$

B.  $S - Q - R - P$

C.  $P - S - R - Q$

D.  $Q - R - S - P$

**Answer: B**



**Watch Video Solution**

6. Pick the correct combination of sperm cell and egg cell that can lead to the formation of a male offspring.

A. sperm cell having X chromosome + egg cell having Y chromosome

B. sperm cell having X chromosome + egg cell having X chromosome



C. sperm cell having Y chromosome + egg

cell having X chromosome

D. sperm cell having Y chromosome + egg

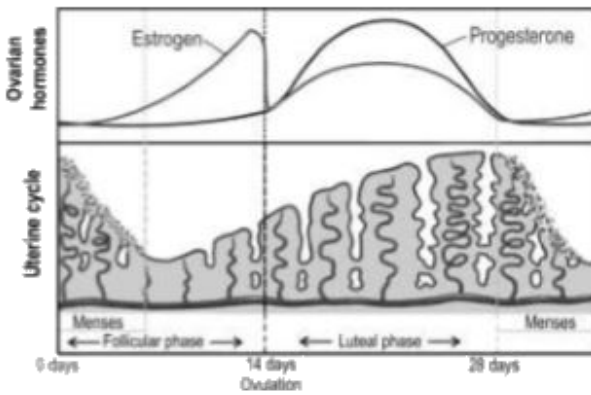
cell having Y chromosome

**Answer: C**

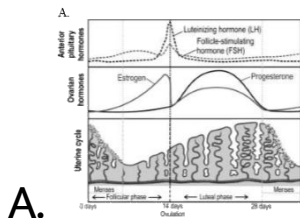


**Watch Video Solution**

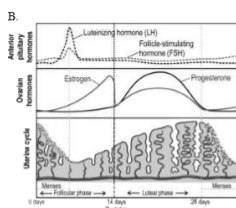
7. Shown here is how the levels of hormones Estrogen and Progesterone change during the menstrual cycle.



Which of these correctly shows how the levels of Luteinizing hormone (LH) and Follicle-stimulating hormone (FSH) change during the same cycle?

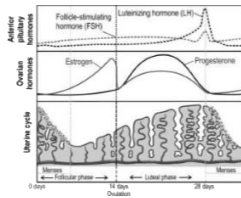


A.

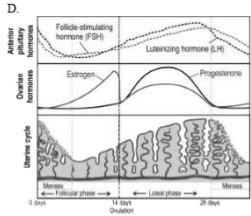


B.

C.



D.



**Answer: A**



**Watch Video Solution**

**8.** Genetic disorders are sometimes classified into two broad types - Mendelian disorders and chromosomal disorders.

Which among the following is a chromosomal disorder?

A. sickle cell anemia

B. Down's syndrome

C. color blindness

D. thalassemia

**Answer: B**



**Watch Video Solution**

9. Cystic fibrosis is an autosomal recessive disorder. Consider a cross between two carrier parents, each with genotype Ff.

A. ff

B. FF

C. ffff

D. FfFf

**Answer: A**



**Watch Video Solution**

**10.** Sutton and Boveri conducted experiments to understand the pattern of inheritance of traits in organisms.

Which among the following statements was /were understood as result of experiments by Sutton and Boveri?

1: Genes are located on homologous chromosomes.

2: All genes on the same chromosome are linked.

3: Genes on homologous chromosomes get separated during anaphase of meiotic division.

4: Frequency of gene pairs on the same chromosome is a measure of the distance between the genes.

A. only 1

B. only 1 and 3

C. only 2,3 and 4

D. only 1,3 and 4

**Answer: B**



**Watch Video Solution**

11. If a wrong type of pollen or pollen from a different species lands on the stigma, which of these is NOT formed?

A. egg cell

B. embryo

C. embryo sac

D. (all of the above will be formed)

**Answer: B**



**Watch Video Solution**



12. An anther is made up of the following major parts: lobes, theca and sporangia. The theca are cavities in which the sporangia develop.

Which of the following types of anther structure can develop into a tetrasporangiate anther?

- A. filamentous
- B. monothealous
- C. dithealous
- D. unlobed

**Answer: C**



**Watch Video Solution**

**13.** Which of the following statements about genes responsible for X linked disease inheritance is/are TRUE?

1: They are located on the X chromosome.

2: They are passed on from mother to female child only.

3: They are passed to all male offsprings from male parent.

4. They are passed to all male offsprings from affected mother.

A. only 1

B. only 1 and 4

C. only 2, 3 and 4

D. only 1, 2 and 3

**Answer: B**



**Watch Video Solution**

**14.** A single gene is usually seen to exhibit a single phenotypic expression. Pleiotropic genes, however, can impact multiple phenotypic expressions.

Which of these genetic disorders have multiple phenotypic expressions being impacted by a change in a single gene?

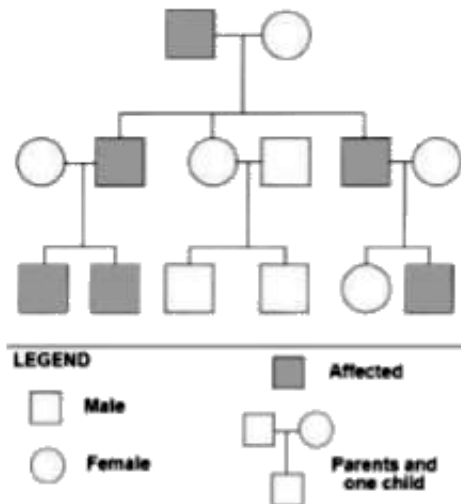
- A. thalassemia
- B. haemophilia
- C. phenylketonuria

## D. Down's syndrome

Answer: C

 Watch Video Solution

15. Consider the pedigree chart given below.



Since only males and offsprings from the affected males are getting affected, the gene responsible for the genetic disease is likely to be located on which of the following?

A. Y chromosome

B. X chromosome

C. autosomal chromosomes

D. (both sex chromosomes and autosomes)

**Answer: A**



**Watch Video Solution**

**16.** Which of these is/are function(s) of placenta?

i. production of hormones

ii. exchange of respiratory gases

iii. production of antibodies

iv. removal of nitrogenous waste from foetus to mother

A. only ii and iii

B. only i, ii and iii

C. only i, ii and iv

D. all - i, ii, iii and iv

**Answer: D**



**Watch Video Solution**

17. Consider a test cross between a homozygous recessive yellow seeded plant with a plant having an unknown seed. 50% of the offsprings in F1 generation have yellow seeds and 50% have green seeds.

Which of the following statements is/are TRUE



about the cross?

1: The unknown seed is homozygous recessive for green.

2: The unknown seed is heterozygous for green.

3: All the offsprings in F2 generation will have green seeds.

4: All the offsprings in F2 generation will have yellow seeds.

A. only 1

B. only 2

C. only 1 and 4

D. only 2 and 3

**Answer: B**



**Watch Video Solution**

**18.** Given below are some statements about chromosomal disorders.

1: They can be caused due to failure in process completion during chromatid separation

2: They can be caused due to failure in process completion during cytokinesis.

3: They arise only in sex chromosomes.

4: They can be inherited.

Which of the above-mentioned statements/s is/are TRUE?

A. only 1

B. only 2

C. only 3 and 4

D. only 1, 2 and 4

**Answer: D**



**Watch Video Solution**

**19.** In the image depicting a level of the packaging of the DNA helix, identify P and Q.



A. P: Base pairs, Q: DNA

B. P: nucleosome, Q: DNA

C. P: nucleosome, Q: chromatin

D. P: histone, Q: chromosome

**Answer: B**



**Watch Video Solution**

**20.** Which of these statements about seed dormancy are TRUE?

1: Seeds do not respire during dormancy.

2: Seeds lose a lot of water before dormancy.

3: Seeds have low metabolic rate during dormancy.

4: Seeds have no metabolic activity during dormancy.

A. only 1 and 3

B. only 2 and 3

C. only 1 and 4

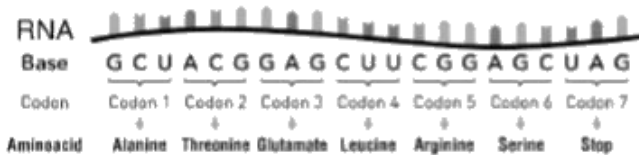
D. only 1, 2 and 3

**Answer: B**



**Watch Video Solution**

21. Consider the following genetic code:



Which among the following would cause a frameshift mutation?

- A. substitution of A by C in codon 2
- B. insertion of G after C in codon 4
- C. insertion of GCU after C in codon 6
- D. deletion of codon 3, GAG



**Answer: B**



**Watch Video Solution**

**22.** Codons UCA, UCG, UCU, UCC, AGC, and AGU code for the amino acid serine.

What do these codons indicate?

- A. that the genetic code is universal
- B. that the genetic code is degenerate
- C. that UCA is the initiator codon

D. that all amino acids are coded by six codons

**Answer: B**



**Watch Video Solution**

**23.** The average Guanine content in yeast is found to be 18%.

Which of the following represents the nitrogenous base content percentages correctly from the above data?

A. A: 18%, T: 18%, C: 36%

B. A: 36%, T: 32%, C: 32%

C. A: 32%, T: 32%, C: 18%

D. A:18%, T: 18%, C:18%

**Answer: C**



**Watch Video Solution**

**24.** If dark skin colour is controlled by dominant genes MNO and its recessive allele

is mno, what can be DEFINITELY said about the offsprings that are dark-skinned?

A. They all have two copies of the dominant alleles.

B. They have at least one copy of the dominant allele.

C. They all have very high exposure to sunlight.

D. They do not have any exposure to sunlight.

**Answer: B**



**Watch Video Solution**

**25.** Two statements are given - one labelled Assertion (A) and the other labelled Reason (R). Read the statements carefully and choose the option that correctly describes statements A and R.

Assertion (A): All genetic disorders, Mendelian or chromosomal, are transmitted from one generation to the other.

Reason (R): Genes are located on chromosomes.

A. Both A and R are true and R is the correct explanation for A.

B. Both A and R are true but R is not the correct explanation for A.

C. A is true but R is false.

D. A is false but R is true.

**Answer: D**



**Watch Video Solution**

**26.** Two statements are given - one labeled Assertion (A) and the other labeled Reason (R).

Assertion: RNA polymerases are able to catalyse all three steps of translation. Reason: RNA polymerases contain an initiation factor and a termination factor in them.

Which of the following is correct?

A. Both A and R are true, and R is the correct explanation of the assertion.

B. Both A and R are true, but R is not the correct explanation of the assertion.

C. A is true, but R is false.

D. A is false, but R is true.

**Answer: C**



**Watch Video Solution**

**27.** Two statements are given - one labeled Assertion (A) and the other labeled Reason (R).

Assertion: INVO cell is a new cost-effective



technology for in vitro fertilisation (IVF) in which the sperm and the egg are mixed in a lab, put in a small capsule which is inserted into the vagina for a five days incubation period, post which the capsule is removed, and the embryos are implanted inside the uterus as usual.

Reason: Instead of growing the embryo in an incubator, allowing it to develop in the natural environment in woman's vagina reduces the cost in case of INVO cell as compared to regular IVF technology.

Which of the following is correct?

- A. Both A and R are true, and R is the correct explanation of the assertion.
- B. Both A and R are true, but R is not the correct explanation of the assertion.
- C. A is true, but R is false.
- D. A is false, but R is true.

**Answer: A**



**Watch Video Solution**

**28.** Two statements are given - one labeled Assertion (A) and the other labeled Reason (R).

Assertion: Apomictic fruits are seedless.

Reason: Apomictic fruits are formed without fertilisation.

Which of the following is correct?

A. Both A and R are true, and R is the correct explanation of the assertion.

B. Both A and R are true, but R is not the correct explanation of the assertion.

C. A is true, but R is false.

D. A is false, but R is true.

**Answer: D**



**Watch Video Solution**

**29.** Globozoospermia is a rare condition that affects only males. It is characterized by sperm cells having a round head and no acrosome.

What would this condition lead to?

A. inability of the sperms to fertilise the  
egg

B. inability of the male to produce enough  
sperms

C. formation of zygote that is haploid  
instead of diploid

D. formation of zygotes with a missing sex  
chromosome

**Answer: A**



**Watch Video Solution**

**30.** Identify the correct sequence of processes that happen in an adult female leading to child birth.

A. fertilisation → implantation →  
development of foetus → ovulation  
→ birth

B. ovulation → fertilisation →  
implantation → development of foetus  
→ birth

C. implantation → ovulation →

development of foetus → fertilisation

→ birth

D. menstruation → fertilisation →

ovulation → development of foetus

→ birth

**Answer: B**



**Watch Video Solution**

31. Study the human karyotype given below.



Which among the following does the karyotype represent?

- A. a normal human female.
- B. a normal human male.
- C. a sterile human female.



D. a sterile human male.

**Answer: D**



**Watch Video Solution**

**32.** The following statements were noted by a student of grade 12 after studying about Morgan's dihybrid cross experiments with *Drosophila*.

1. Two genes chosen in a dihybrid cross are always located on the same chromosome.

2. Genes on the same chromosome are often linked.
3. Linked genes segregate independently during gamete formation.
4. Linked genes do not always obey the law of independent assortment.

Which of these statement(s) is/are TRUE?

- A. only 1
- B. only 1 and 2
- C. only 2 and 4
- D. all- 1, 2, 3 and 4

**Answer: C**



**Watch Video Solution**

**33.** In an experiment involving three types of crosses, the following results were observed in F1 progeny:

Cross 1: Only one parental character is expressed.

Cross 2: Both the parental characters are partially expressed.

Cross 3: Both the parental characters are

expressed.

Which of the following conclusions is most likely to be correct?

A. Cross 1 represents codominance, cross 2 represents incomplete dominance and cross 3 represents complete dominance.

B. Cross 1 represents codominance, cross 2 represents complete dominance and cross 3 represents incomplete dominance.

C. Cross 1 represents complete dominance, cross 2 represents incomplete dominance and cross 3 represents codominance.

D. Cross 1 represents incomplete dominance, cross 2 represents codominance and cross 3 represents complete dominance.

**Answer: C**



**Watch Video Solution**

**34.** In a cross between full green pods (FFGG) and constricted yellow pods (ffgg), the percentage of heterozygous dominant offsprings in F1 is:

A. 25 %

B. 50 %

C. 75 %

D. 100 %

**Answer: D**



Watch Video Solution

**35.** Enlisted are some events during fruit formation.

1: The egg cell is fertilised by a male gamete.

2. The thalamus withers away.

3. The ovules form seeds.

4. The ovary develops into the fleshy fruit.

Which of these events is/are NOT TRUE for an apple fruit?

A. only 1

B. only 2

C. only 2 and 4

D. only 2,3 and 4

**Answer: B**



**Watch Video Solution**

**36.** Why is the endosperm in flowering plants

$3n$ ?



A. because it is formed from 3 antipodal cells

B. because it is formed from 2 male gametes and an egg cell

C. because it is formed from 2 male gametes and a polar nucleus

D. because it is formed from 1 male gamete and 2 polar nuclei

**Answer: D**



**Watch Video Solution**

**37.** When McLeod, Avery and McCarty experimented to establish the chemical nature of the Transforming Principle', which of the following statement/s helped them reach their conclusion?

1: Proteases did not affect transformation

2: DNases did not affect transformation,

3: RNases did not affect transformation.

4: The R strain could synthesise the polysaccharide coat.

A. only 1 and 2

B. only 1 and 3

C. only 1, 3 and 4

D. only 2,3 and 4

**Answer: B**



**Watch Video Solution**

**38.** Consider the following statements about the genetic code and identify which of them is/ are INCORRECT.

1: AUG is an initiator codon.

2: Codons in bacteria and animals usually are different.

3: All codons are triplets of amino acids and code for base pairs.

4: All codons are triplets of base pairs and code for amino acids.

A. only 3

B. only 2 and 3

C. only 1 and 4

D. only 1, 2 and 3

**Answer: B**



**Watch Video Solution**

**39.** Given below are statements on the structure of the DNA double helix.

1: The helix generally is wound clockwise.

2: Purines and pyrimidines are paired by different number of hydrogen bonds.

3: The two strands run in parallel polarity.

4: The sugar in DNA backbone is a pentose sugar.

Which of the above statement/s is/are NOT TRUE?

A. only 1

B. only 2

C. only 3

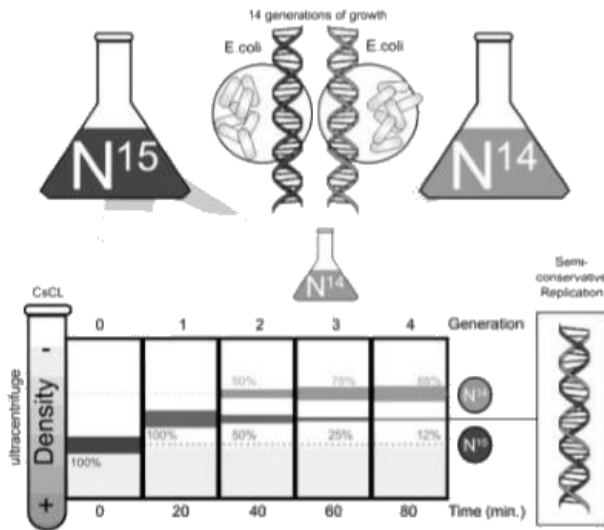
D. only 2 and 4

**Answer: C**



**Watch Video Solution**

40. The diagram below represents Meselson and Stahl's experiment on DNA replication.



For several generations, *E. coli* was grown in a medium containing an isotope of nitrogen,  $N^{15}$ . DNA was extracted periodically, at successive generations, and it was subjected to ultracentrifugation to check the percentage

of the isotope that was transmitted across generations.

How did the centrifugation process help in providing evidence of the nature of DNA replication?

A. It mixed the medium well.

B. It destroyed the heavy isotope.

C. It allowed the DNA with  $N^{14}$  to settle down.

D. It separated the DNA with nitrogen isotopes based on densities.



**Answer: D**



**Watch Video Solution**

**41.** Which of the following correctly represents the path taken by the sperm (indicated by the arrows) inside the female reproductive system till the point it may meet an egg cell (indicated by the point)?

**A.**





B.



C.



D.

**Answer: B**



**Watch Video Solution**

**42.** Recent studies have indicated that one of the possible reasons behind male infertility is certain mutations in the mitochondrial DNA of the sperms that affect the way mitochondria in the sperms function. What could be a possible effect of such a mutation on the sperm?

A. It lowers the sperm count.

B. It lowers the sperm motility.

C. It lowers the ability to penetrate the egg.

D. It lowers the ability to produce hormones.

**Answer: B**



**Watch Video Solution**

**43.** Which of the following is paired correctly with respect to their functions?

A. mRNA: catalyses translation

B. rRNA: initiates transcription

C. tRNA: reads genetic code

D. rRNA: provides template

**Answer: C**



**Watch Video Solution**

**44.** When glucose is substituted by lactose in the growth medium of the *E. coli* bacteria, lactose enters the cells and acts as an inducer

of the lac operon. It then leads to transcription of enzymes that enable effective digestion of lactose.

Instead of lactose an unknown sugar medium is used and there is no glucose in the medium.

How would the unknown sugar affect the lac operon?

- A. It will induce the lac operon.
- B. It will have no effect on the lac operon.
- C. It will enable its conversion to lactose which will then induce the lac operon.

D. It may or may not induce the lac operon depending on whether the repressor is being produced or not.

**Answer: B**



**Watch Video Solution**

**45.** The image below shows the DNA fingerprinting evidence obtained from a crime scene by the forensic department.



Who is most likely guilty of the crime?

- A. Suspect 1
- B. Suspect 2
- C. Suspect 3



D. (The DNA fingerprint of the criminal is not there.)

**Answer: B**



**Watch Video Solution**

**46.** How does an anticodon on a tRNA molecule help?

A. It signals the stop of translation.

B. It helps to initiate a  $5' \rightarrow 3'$

translation.

C. It ensures accurate reading of the code

on the mRNA.

D. It enables translation in the opposite

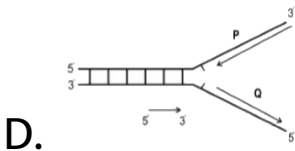
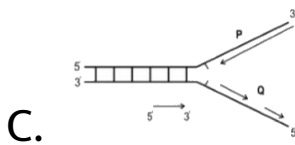
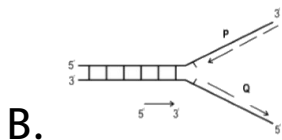
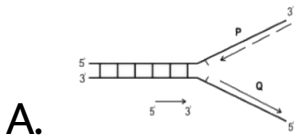
polarity to the mRNA.

**Answer: C**



**Watch Video Solution**

47. Which one of the images of the replicating fork given below represent the process correctly?



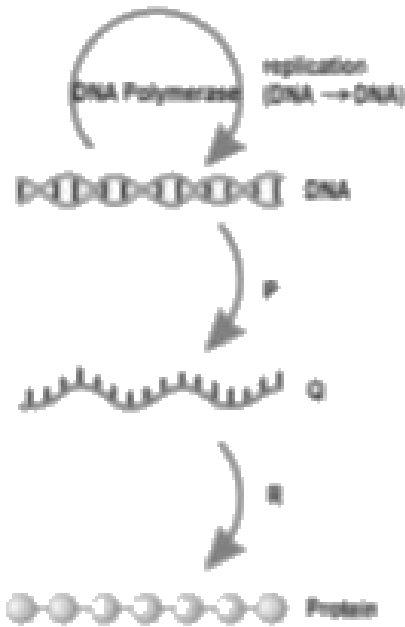
**Answer: C**



**Watch Video Solution**

**48.** In the representation of the Central Dogma of Molecular Biology given below.

identify P, Q and R.



A. P: ligase, Q: histone, R: polymerase

B. P: translation, Q: mRNA, R: transcription

C. P: splicing, Q: mRNA, R: capping

D. P: transcription, Q: mRNA, R: translation

**Answer: D**

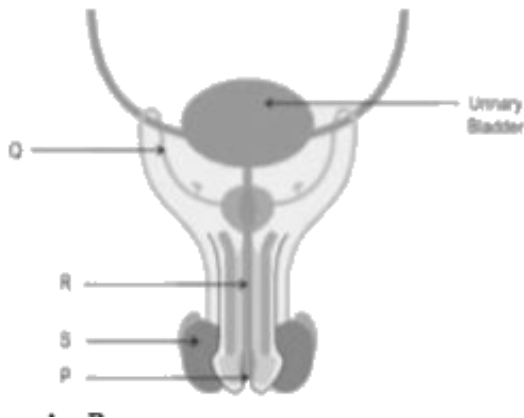


**Watch Video Solution**

**49.** A new birth control method for men known as RISUG for Reversible Inhibition of Sperm Under Guidance is under testing. The procedure involves injection of a nontoxic polymer inside of the vas deferens. The polymer forms a coating on the inner lining of vas deferens. As sperms pass through, they are chemically disabled by the polymer. Hence,

there is ejaculation but the sperms are incapable of fertilising the egg. At any stage if needed, the polymer film can be dissolved and removed using specific injections.

At which of these points would the polymer be injected?



A. P

B. Q

C. R

D. S

**Answer: B**



**Watch Video Solution**

**50.** A new birth control method for men known as RISUG for Reversible Inhibition of Sperm Under Guidance is under testing. The procedure involves injection of a nontoxic polymer inside of the vas deferens. The



polymer forms a coating on the inner lining of vas deferens. As sperms pass through, they are chemically disabled by the polymer. Hence, there is ejaculation but the sperms are incapable of fertilising the egg. At any stage if needed, the polymer film can be dissolved and removed using specific injections.

What effect would the polymer have on the sperms?

A. It may be preventing the sperms from moving ahead.

B. It may be damaging the membrane or the tail of the sperms.

C. It may be reversing the direction of movement of the sperms.

D. It may be controlling the frequency at which sperms are released.

**Answer: B**



**Watch Video Solution**

**51.** A new birth control method for men known as RISUG for Reversible Inhibition of Sperm Under Guidance is under testing. The procedure involves injection of a nontoxic polymer inside of the vas deferens. The polymer forms a coating on the inner lining of vas deferens. As sperms pass through, they are chemically disabled by the polymer. Hence, there is ejaculation but the sperms are incapable of fertilising the egg. At any stage if needed, the polymer film can be dissolved and removed using specific injections.

In another birth control method vasectomy, a small part of the vas deferens is removed or tied up. What advantage does RISUG give over vasectomy?

- A. It can be performed on males of any age.
- B. It does not involve the female partner of the male.
- C. It is being tested currently and hence more reliable.
- D. It allows the male to go back to the fertile state whenever needed.

**Answer: D**



**Watch Video Solution**

**52.** A new birth control method for men known as RISUG for Reversible Inhibition of Sperm Under Guidance is under testing. The procedure involves injection of a nontoxic polymer inside of the vas deferens. The polymer forms a coating on the inner lining of vas deferens. As sperms pass through, they are chemically disabled by the polymer. Hence,

there is ejaculation but the sperms are incapable of fertilising the egg. At any stage if needed, the polymer film can be dissolved and removed using specific injections.

In one of the trials that was being conducted to check the effectiveness of the method, one of the conditions was for males to have had two children in the past. What could be the reason for having such a condition?

A. to ensure that they could not produce more children in future

B. to ensure that the procedure didn't have any side effects on their children

C. to ensure that the males were fertile and their partners had conceived in the past

D. to ensure that they were educated enough to understand how the method worked

**Answer: C**



**Watch Video Solution**

**53.** A student researching on an artificial crop improvement project in wheat growing in a certain field saw that wheat plants were covered with bags made up of butter paper.



What is the purpose of covering these plants with butter paper bags?

A. to reduce transpiration

B. to reduce photosynthesis



C. to hide the identity of the plants

D. to prevent unwanted pollination

**Answer: D**



**Watch Video Solution**

**54.** A student researching on an artificial crop improvement project in wheat growing in a certain field saw that wheat plants were covered with bags made up of butter paper.



A

process called emasculation is carried out before bagging. In which of these cases can the process of emasculation be avoided?

- A. when the flowers are very large
- B. when the flowers are very small
- C. when the flowers are pistillate
- D. when the flowers are staminate

**Answer: C**



**Watch Video Solution**

**55.** A student researching on an artificial crop improvement project in wheat growing in a certain field saw that wheat plants were covered with bags made up of butter paper.



Which of the following is NOT a desired outcome of such crop improvement techniques?

- A. to create disease-free varieties
- B. to create high-yielding varieties
- C. to conserve desired characters
- D. to increase female flowers

**Answer: C**



**Watch Video Solution**

56. Which among the following statements about the exons is TRUE?

- A. They are stop codons.
- B. They are start codons.
- C. They are coding sequences.
- D. They are intervening sequences.

**Answer: C**



**Watch Video Solution**

57. It is found that 99.9 percent of the base sequences in humans are identical.

Given below are number of base pairs that match with a sample from a human male individual. Which of them is definitely from a different individual?

A.  $3 * 10^9$

B.  $3 * 10^6$

C.  $3 * 10^3$

D.  $3 * 10^8$

**Answer: B**



**Watch Video Solution**

**58.** hnRNA is converted to mRNA after which of the following in transcription?

A. initiation

B. capping

C. splicing

D. tailing

**Answer: D**



**Watch Video Solution**

**59.** Consider a cross where some off springs in a generation have genotype  $ppqrr$ . Which of these CAN be a genotype of either parent?

A.  $PPQQRR$

B.  $PPQRr$

C.  $PpQqRr$

D.  $PpQQRr$

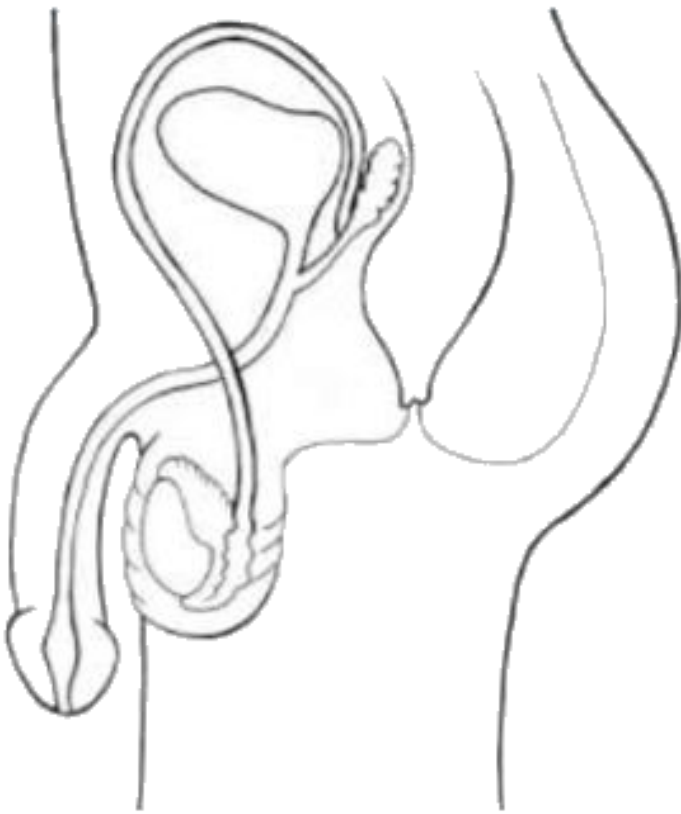


**Answer: C**



**Watch Video Solution**

**60.** Shown here is a representation of the male reproductive system.



One of its important parts is missing. Which one?

A. urinary bladder

B. seminal vesicles

C. prostate gland

D. vas deferens

**Answer: C**



**Watch Video Solution**