



# BIOLOGY

## BOOKS - CBSE MODEL PAPER

### SAMPLE PAPER 2022 TERM II

#### Section A

1. Humans have innate immunity for protection against pathogens that may enter the gut along with food. What are the two

barriers that protect the body from such pathogens?



[Watch Video Solution](#)

2. A patient admitted in ICU was diagnosed to have suffered from myocardial infarction. The condition of coronary artery is depicted in the image below.

Name two bioactive agents and their mode of

action that can improve this condition.

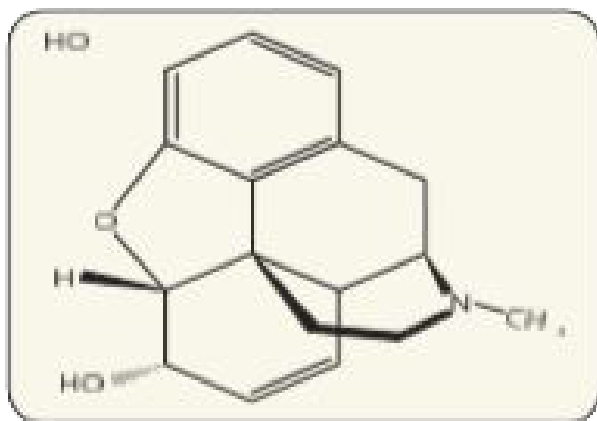


[Watch Video Solution](#)

3. Substantiate by giving two reasons as to why a holistic understanding of the flora and fauna the cropland is required before introducing an appropriate biocontrol method.

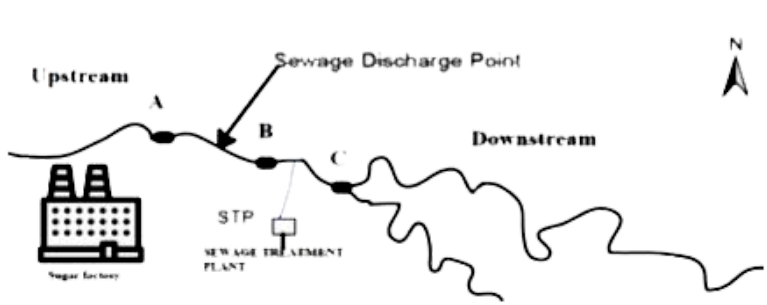
 [Watch Video Solution](#)

4. Identify the compound chemical structure is shown below. State any three of its physical properties.



 [Watch Video Solution](#)

5. Water samples were collected at points A, B and C in a segment of a river near a sugar factory and tested for BOD level. The BOD levels of samples A, B and C were 400 mg/L, 480 mg/L and 8 mg/L respectively. What is this indicative of? Explain why the BOD level gets reduced considerably at the collection point C?



[Watch Video Solution](#)

6. An ecologist study an area with population A, thriving on unlimited resources and showing exponential growth, introduced population B and C to the same area.

What will be the effect on the growth pattern of the population A, B and C when living together in the same habitat?



**Watch Video Solution**

7. With the decline in the population of fig species it was noticed that the population of wasp species also started to decline. What is the relationship between the two and what could be the possible reason for decline of wasps?



[Watch Video Solution](#)

8. With the increase in the global temperature, the inhabitants of Antarctica are facing

fluctuations in the temperature. Out of the regulators and the conformers, which of the two will have better chances of survival? Give two adaptations that support them to survive in the ambient environment? Give one suitable example.



**Watch Video Solution**

**Section B**



1. How do normal cells get transformed into cancerous neoplastic cells? Elaborate giving three examples of inducing agent



[Watch Video Solution](#)

2. A person is suffering from a high-grade fever. Which symptoms will help to identify if he/she is suffering from Typhoid, Pneumonia or Malaria?



[Watch Video Solution](#)

**3.** Recognition of an antigenic protein of a pathogen or exposure to a pathogen occurs during many types of immune responses, including active immunity and induced active immunity.

Specify the types of responses elicited when human beings get encountered by a pathogen.



**Watch Video Solution**

4. In a pathological lab, a series of steps were undertaken for finding the gene of interest. Describe the steps, or make a flow chart showing the process of amplification of this gene of interest.



[Watch Video Solution](#)

5. 'The Evil Quartet' describes the rates of species extinction due to human activities.

Explain how the population of organisms is affected by fragmentation the habitats.



**Watch Video Solution**

6. Introduction of alien species has led to environmental damage and decline of indigenous species. Give any one example of how it has affected the indigenous species?



**Watch Video Solution**

7. Could the extinction of Steller's sea cow and passenger pigeon be saved by man? Give reasons to support your answer.



[Watch Video Solution](#)

8. The image shown below is of a sacred grove found in India. Explain how has human involvement helped in the preservation of

these biodiversity rich regions.



[Watch Video Solution](#)

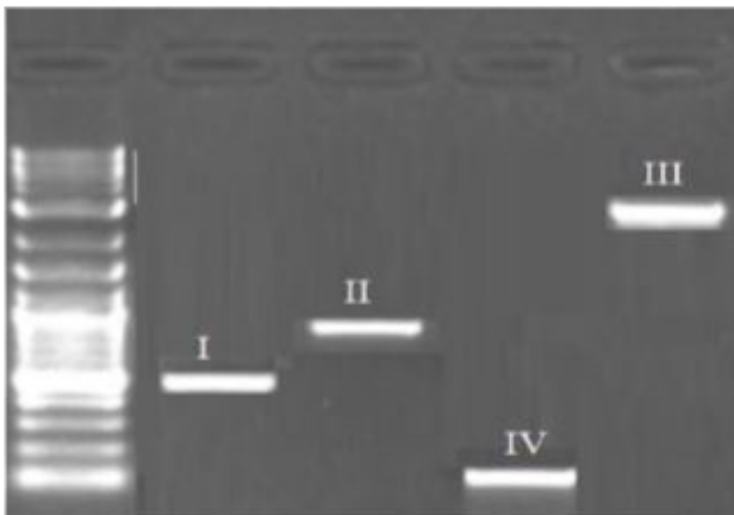
9. Value of  $Z$  (regression coefficient) is considered for measuring the species richness of an area. If the value of  $Z$  is 0.7 for area A

,and 0.15 for area B, which area has higher species richness and a steeper slope?



**Watch Video Solution**

**10.** The image below depicts the result of gel electrophoresis.



If the ladder represents sequence length upto 3000 base pairs (bp).

a. Which of the bands (I - IV) correspond to 2500 bp and 100 bp respectively?

b. Explain the basis of this kind of separation and also mention the significance of this process.



[Watch Video Solution](#)

**Section C**



1. Some restriction enzymes break a phosphodiester bond on both the DNA strands, such that only one end of each molecule is cut and these ends have regions of single stranded DNA. BamH1 is one such restriction enzyme which binds at the recognition sequence, 5'-GGATCC- 3' and cleaves these sequences just after the 5'-guanine on each strand.

a. What is the objective of this action?

b. Explain how the gene of interest is introduced into a vector.

c. You are given the DNA shown below.

5' ATTTTGAGGATCCGTAATGTCCT 3

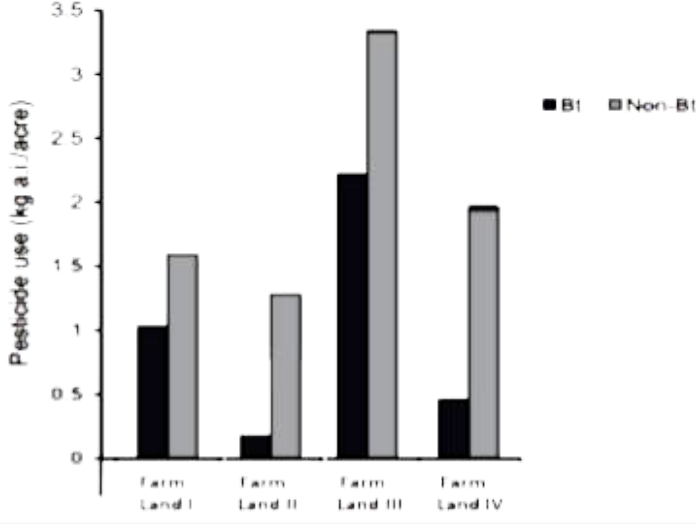
3' TAAAACTCCTAGGCATTACAGGA 5'

If this DNA was cut with BamHI, how many DNA fragments would you expect? Write the sequence of these double-stranded DNA fragments with their respective polarity.

d. A gene M was introduced into E.coli cloning vector PBR322 at BamHI site. What will be its impact on the recombinant plasmids? Give a possible way by which you could differentiate non recombinant to recombinant plasmids.



2. GM crops especially Bt crops are known to have higher resistance to pest attacks. To substantiate this an experimental study was conducted in 4 different farmlands growing Bt and non Bt-Cotton crops. The farm lands had the same dimensions, fertility and were under similar climatic conditions. The histogram below shows the usage of pesticides on Bt crops and non Bt crops in these farm lands.



a. Which of the above 4 farm lands has successfully applied the concepts of Biotechnology to show better management practices and use of agrochemicals? If you had to cultivate, which crop would you prefer (Bt or Non- Bt) and why?

b. Cotton Bollworms were introduced in another experimental study on the above farm

lands wherein no pesticide was used. Explain what effect would a Bt and Non Bt crop have on the pest.



**Watch Video Solution**