



BIOLOGY

BOOKS - SRIJAN BIOLOGY (ENGLISH)

SAMPLE PAPER - 3 (BIOLOGY)

Questions Choosing The Correct Option

1. Which one of the following is not a male accessory gland?

A. Seminal vesicle

B. Ampulla

C. Prostate

D. Bulbourethral gland

Answer: B



View Text Solution

2. Which of the following is a mass of finger like projections on the synergid wall?

A. Egg

B. Chalaza

C. Micropylar

D. Filiform apparatus

Answer: D



View Text Solution

3. How many chromosomes do drones of honeybee possess?

A. 12

B. 16

C. 24

D. 32

Answer: B



View Text Solution

4. A typical angiospermic anther possesses

A. 4 lobes, 2 sporangia

B. 4 lobes, 4 sporangia

C. 2 lobes, 2 sporangia

D. 2 lobes, 4 sporangia

Answer: D



View Text Solution

5. Which of the following statements is correct about a cistron?

A. It is the non-coding DNA segment.

B. It contains repetitive DNA sequences.

C. It is a segment of DNA coding for a polypeptide.

D. It is a segment of DNA that codes for a mono-peptide.

Answer: C



View Text Solution

6. Which part of the flower do the tassels of the corn-cob represent?

A. Petals

B. Stigma

C. Style

D. Both style and stigma

Answer: D



View Text Solution

7. The transcriptionally active region of chromatin in a nucleus is:

A. intron

B. exon

C. heterochromatin

D. all of these

Answer: B



View Text Solution

8. At which stage of cell division does segregation of an independent pair of chromosomes occurs?

- A. Anaphase-I of Meiosis-I
- B. Prophase – I of Meiosis -I
- C. Anaphase-II of Meiosis-II
- D. Prophase-II of Meiosis-II

Answer: A



View Text Solution

9. Moss plants produce very large number of male gametes. These gametes are called

A. Heterogametes

B. Antherozoids

C. Isogametes

D. Egg

Answer: B



View Text Solution

10. A pea plant homozygous for axial flowers and constricted pods (AAii) is crossed with the pea plant homozygous for terminal flowers having inflated pods (aall). The genotype of the parents would be

A. Aa_{ii} x aa_{ii}

B. aa_{li} x Aa_{li}

C. AA_{ii} x aa_{ll}

D. AA_{ll} x aa_{ii}

Answer: C





11. What type of sex-determination mechanisms the following cross show? Female ZW and Male ZZ

- A. Male heterogamety
- B. Male homogamety
- C. Female homogamety
- D. Female heterogamety Question

Answer: D

 [View Text Solution](#)

12. Sporopollenin is found in

A. Integuments of ovule

B. Intine

C. Exine

D. Anther

Answer: C

 [View Text Solution](#)

13. At which ends do 'capping' and 'tailing' of mRNA occur respectively?

A. 5' and 3'

B. 5' and 5'

C. 3' and 3'

D. 3' and 5'

Answer: A



View Text Solution

14. Consider the template strand given below:

----ATGCATGCATA C-----

Write the sequence of RNA that will be transcribed from the above transcription unit along with its polarity,

A. 3'-UACGUACGUAUG-5'

B. 5'-UACGUACGUAUG-3'

C. 5'-TACGTACGTATG-3'

D. 3'-TACGTACGTATG-5'

Answer: B





[View Text Solution](#)

15. Sexual reproduction in flowering plants was discovered by

A. Camerarius

B. Nawaschin

C. Strasburger

D. Maheshwari

Answer: C



[View Text Solution](#)

16. Marchantia is a:

A. Monoecious plant

B. Homothallic plant

C. Dioecious plant

D. Bisexual plant

Answer: C



View Text Solution

17. The bacterium Streptococcus produces the enzyme

A. Streptokinase

B. Statin

C. Lipase

D. Chitin

Answer: A



View Text Solution

18. Which of the following is a better mode of reproduction?

A. Sexual

B. Asexual

C. Both sexual and asexual

D. Parthenocarpy

Answer: A



View Text Solution

19. Tendrils of Cucurbita and thorns of Bougainvillea are

- A. Analogous structures
- B. Homologous structures
- C. Vestigial organs
- D. Connecting links

Answer: B



View Text Solution

20. Who proposed the concept of Central Dogma?

A. Meselson and Stahl

B. Frederich Meischer

C. Watson and Crick

D. Francis Crick

Answer: D



View Text Solution

21. Which of the following is the terminal method to prevent pregnancy in humans?

A. Condoms

B. Saheli pills

C. Tubectomy

D. Cut

Answer: C



View Text Solution

22. Transcription of InRNA is catalysed by

A. DNA polymerase

B. RNA polymerase

C. DNA ligase

D. Gyrase

Answer: B



View Text Solution

23. The phase that all organisms have to pass through before they can reproduce sexually is

- A. Juvenile phase
- B. Senescent phase
- C. Reproductive phase
- D. Menopausal phase

Answer: A



View Text Solution

24. Cucurbits are categorized as

A. Dioecious

B. Monoecious

C. Hermaphrodites

D. Parthenogenetic

Answer: B



View Text Solution

25. Which embryonic stage gets implanted in the uterine wall of a human female?

A. Blastocyst

B. Morula

C. Blastomere

D. Zygote

Answer: A



View Text Solution

26. Which of the following is a post-fertilisation event in flowering plants?

A. Transfer of pollen grains

B. Embryo development

C. Formation of flower

D. Formation of pollen grains

Answer: B



View Text Solution

27. Which of the following gases is not included in biogas?



Answer: D



View Text Solution

28. Fertilization is the fusion of male and female gametes.

Reason : Fertilization is followed by division of zygote multiple times to form the blastocyst.

A. Both assertion and reason are true and reason is the correct explanation of assertion.

B. Both assertion and reason are true, but reason is not the correct explanation of assertion.

C. Assertion is true, but reason is false.

D. Both assertion and reason are false.

Answer: B



View Text Solution

29. Assertion : Pollen grains are well preserved as fossils.

Reason : Exine of the pollen grain contains sporopollenin.

A. Both assertion and reason are true and reason is the correct explanation of assertion.

B. Both assertion and reason are true, but reason is not the correct explanation of assertion.

C. Assertion is true, but reason is false.

D. Both assertion and reason are false.

Answer: A



View Text Solution

30. Assertion : Pills contain a combination of estrogen and progesterone.

Reason : Pills are not safe to take.

A. Both assertion and reason are true and reason is the correct explanation of assertion.

B. Both assertion and reason are true, but reason is not the correct explanation of assertion.

C. Assertion is true, but reason is false.

D. Both assertion and reason are false.

Answer: C



View Text Solution

31. Assertion : Meiosis results in formation of two daughter cells,

Reason : Both the daughter cells are exactly same.

A. Both assertion and reason are true and reason is the correct explanation of assertion.

B. Both assertion and reason are true, but reason is not the correct explanation of assertion.

C. Assertion is true, but reason is false.

D. Both assertion and reason are false.

Answer: D



View Text Solution

32. Assertion : If dsDNA has 28% of cytosine, the amount of guanine will also be 28%.

Reason : According to Chargaff's rule, amount of guanine is always equal to amount of cytosine.

A. Both assertion and reason are true and reason is the correct explanation of assertion.

B. Both assertion and reason are true, but reason is not the correct explanation of assertion.

C. Assertion is true, but reason is false.

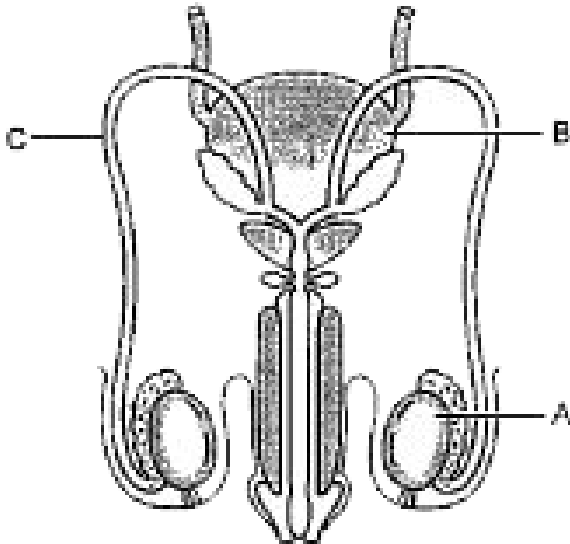
D. Both assertion and reason are false.

Answer: A



View Text Solution

33. Study the diagram given below and answer the questions that follow.



Name the accessory gland 'B'.

A. Seminal vesicle

B. Vas deferens

C. Epididymis

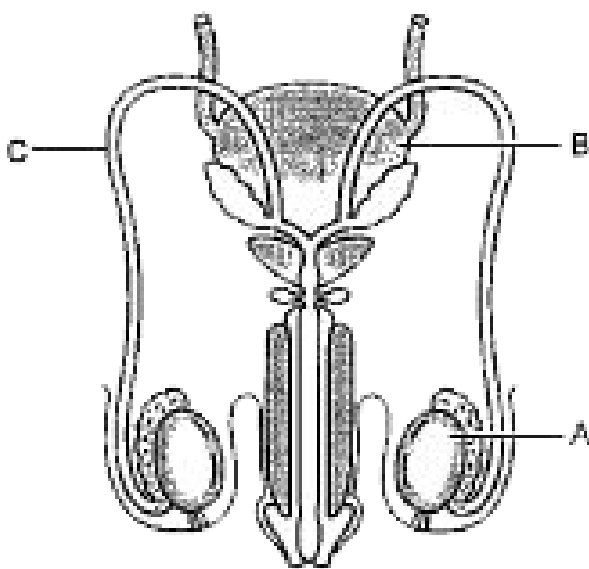
D. Testis

Answer: A



View Text Solution

34. Study the diagram given below and answer the questions that follow.



Name the organ 'C'.

A. Seminal vesicle

B. Vas deferens

C. Epididymis

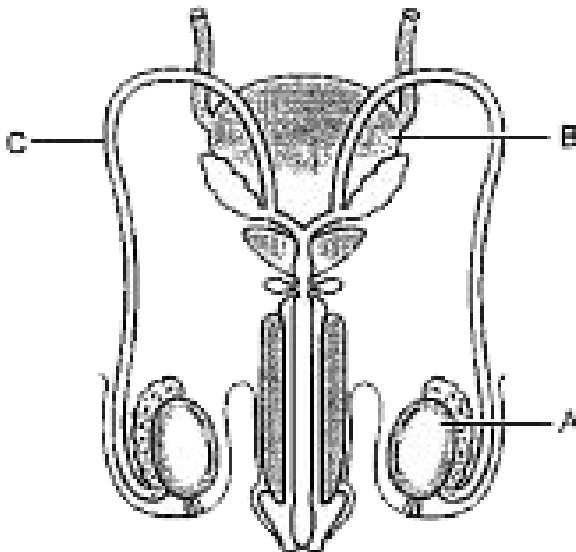
D. Testis

Answer: B



View Text Solution

35. Study the diagram given below and answer the questions that follow.



Which of the following hormone regulates Sertoli cells?

A. GH

B. Oxytocin

C. LH

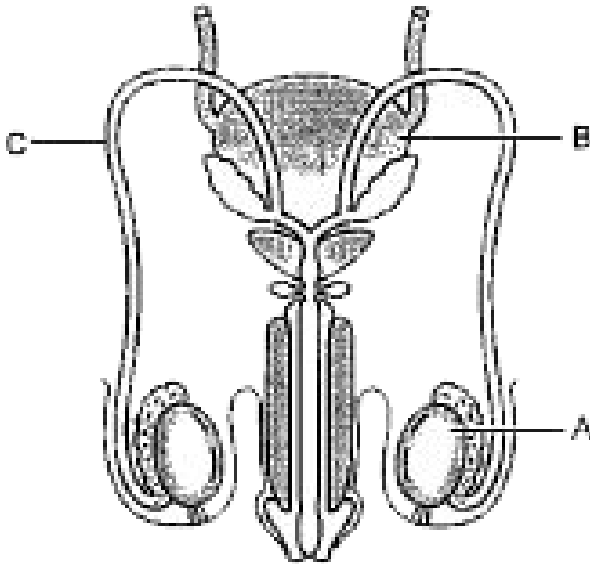
D. FSH

Answer: D



View Text Solution

36. Study the diagram given below and answer the questions that follow.



Sertoli cells are present

A. outside seminiferous tubules

B. in epididymis

C. in the lining of seminiferous tubules

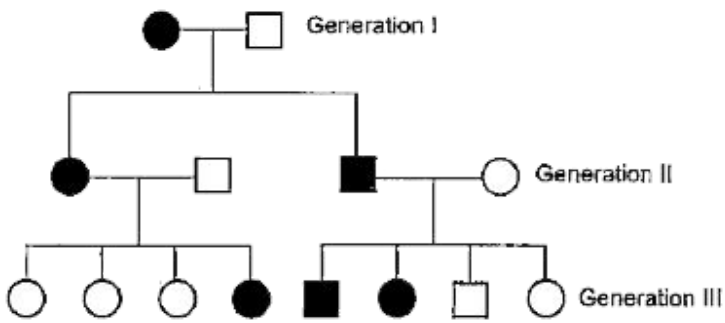
D. in the lining of epididymis

Answer: C



View Text Solution

37. Study the pedigree analysis given below and answer the questions that follow:



The type of inheritance depicted here is:

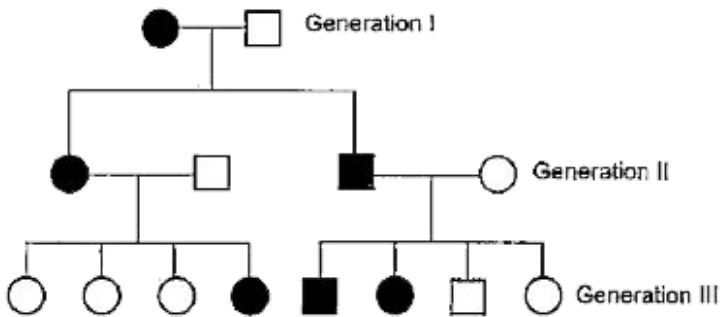
- A. Sex-linked dominant
- B. Sex-linked recessive
- C. Autosomal dominant
- D. Autosomal recessive

Answer: B



View Text Solution

38. Study the pedigree analysis given below and answer the questions that follow:



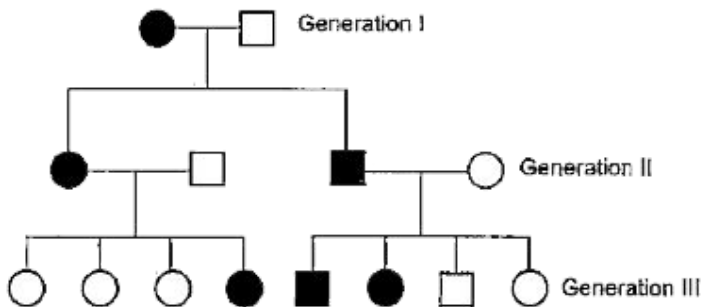
The possible genotype of parents is

- A. female - $X^d X^d$ and male - $X^d Y$
- B. female - $X^d X$ and male - $X^d Y$
- C. female - $X^d X^d$ and male - XY
- D. female - XX and male - $X^d Y$

Answer: A

 [View Text Solution](#)

39. Study the pedigree analysis given below and answer the questions that follow:



Which of the following disease shows this type of inheritance?

A. Down's syndrome

B. Thalassemia

C. Sickle-cell anaemia

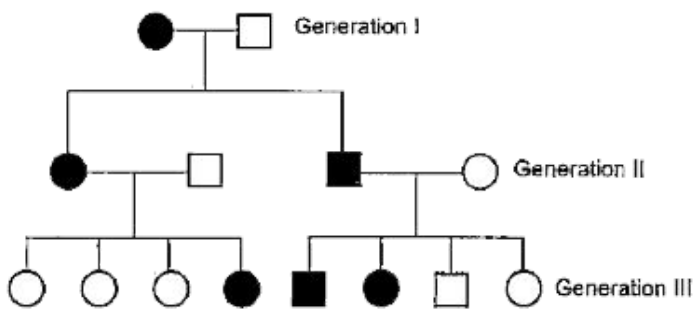
D. Hemophilia

Answer: D



View Text Solution

40. Study the pedigree analysis given below and answer the questions that follow:



A. Sickle-cell anaemia is a result of mutation.

B. frameshift

C. point

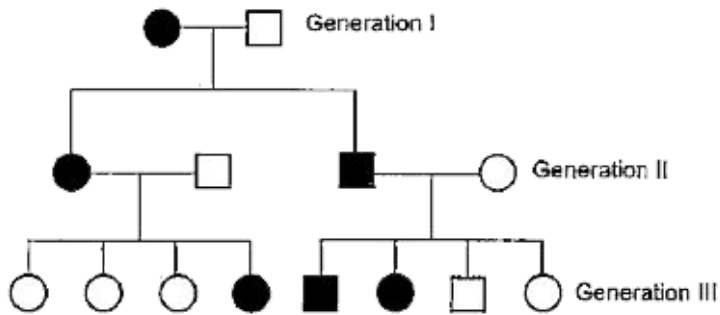
D. base

Answer: C



View Text Solution

41. Study the pedigree analysis given below and answer the questions that follow:



A son receives X-chromosome from,

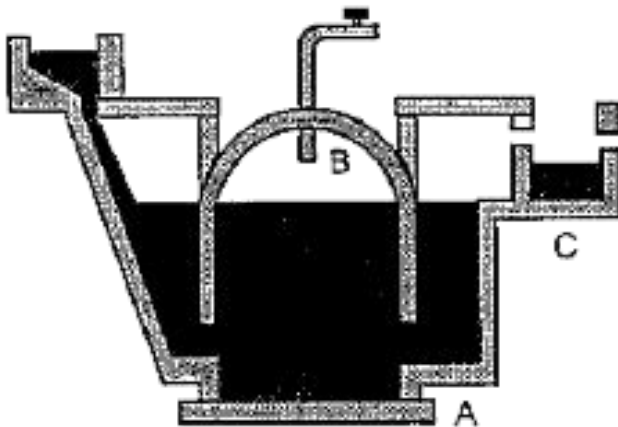
- A. The mother
- B. The father
- C. Both mother and father
- D. Either mother or father.

Answer: A



View Text Solution

42. Study the diagram of biogas plant given below and answer the questions that follow.



The major constituents of biogas are:

A. CH_4 , CO_2

B. C_2H_6 , O_2

C. CH_4 , O_2

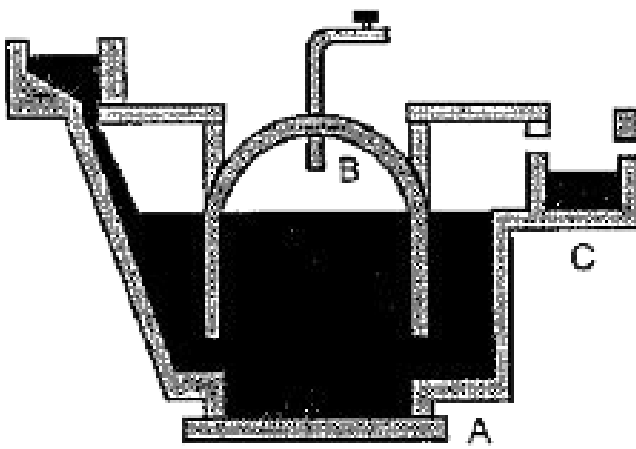
D. C_2H_6 , CO_2

Answer: A



View Text Solution

43. Study the diagram of biogas plant given below and answer the questions that follow.

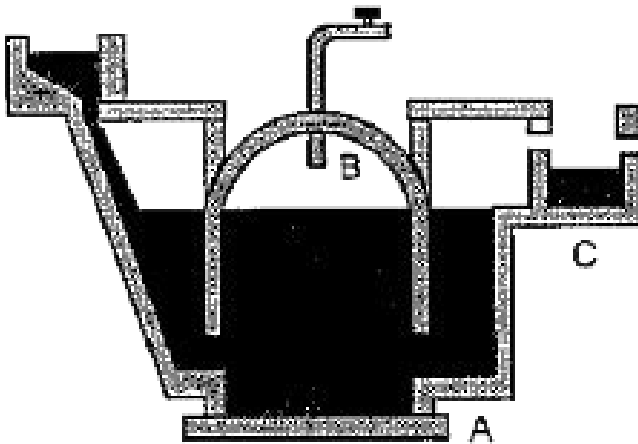


The component labeled as 'A' is

- A. Gas tank
- B. Digester
- C. Outlet
- D. Inlet

Answer: B

44. Study the diagram of biogas plant given below and answer the questions that follow.



The biogas plant is constructed

- A. Under the ground
- B. Above the ground

C. On top of a building

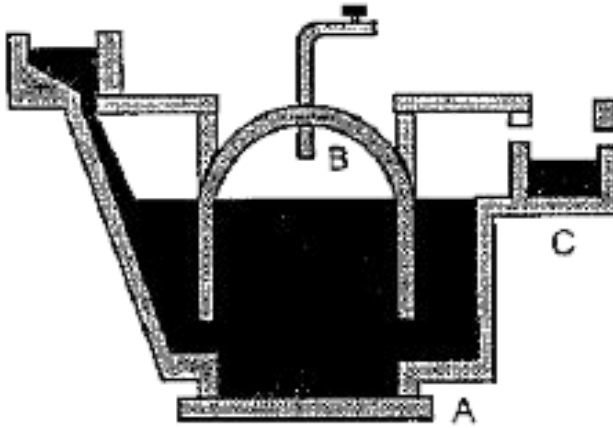
D. Near a water source

Answer: A



View Text Solution

45. Study the diagram of biogas plant given below and answer the questions that follow.



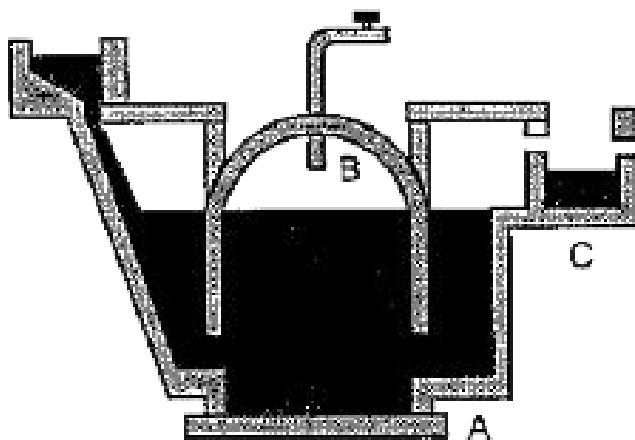
The spent slurry is

- A. used as fuel
- B. used as fertilizer
- C. is a waste
- D. is reused to produce biogas

Answer: B



46. Study the diagram of biogas plant given below and answer the questions that follow.



The component labeled as 'B' is

A. Gas tank

B. Digester

C. Outlet

D. Inlet

Answer: A



View Text Solution

47. Read the passage given below and answer the questions that follow.

A couple cannot decide whether to have children or not since many members in the husband's family have been suffering from a

debilitating genetic condition. They consult a doctor and he refers them to a geneticist. The geneticist asks them about their entire family history up to 5 generations and gives them the advice.

The method that the geneticist used was

- A. Blood tests
- B. Pedigree analysis
- C. Test crosses
- D. Chromosomal tests

Answer: B



[View Text Solution](#)

48. Read the passage given below and answer the questions that follow.

A couple cannot decide whether to have children or not since many members in the husband's family have been suffering from a debilitating genetic condition. They consult a doctor and he refers them to a geneticist. The geneticist asks them about their entire family history up to 5 generations and gives them the advice.

Which of the following symbols represents marriage?

A. draw two circles joined by two lines

B. draw two squares joined by two lines

C. draw a circle and a square joined by a
line

D. draw a circle and square joined by two
lines

Answer: C



View Text Solution

49. Read the passage given below and answer the questions that follow.

A couple cannot decide whether to have children or not since many members in the husband's family have been suffering from a debilitating genetic condition. They consult a doctor and he refers them to a geneticist. The geneticist asks them about their entire family history up to 5 generations and gives them the advice.

The advantage of this method is

- A. helps in genetic counselling
- B. shows origin of trait in family
- C. predicts harmful effects of marriage between close relatives
- D. All of these

Answer: D



View Text Solution

50. Read the passage given below and answer the questions that follow.

A couple cannot decide whether to have children or not since many members in the husband's family have been suffering from a debilitating genetic condition. They consult a doctor and he refers them to a geneticist. The geneticist asks them about their entire family history up to 5 generations and gives them the advice.

The characters studied in this type of test is equivalent to

A. Quantitative trait

B. Mendelian trait

C. Polygenic trait

D. Maternal trait

Answer: B



View Text Solution

51. Read the passage given below and answer the questions that follow.

A couple cannot decide whether to have

children or not since many members in the husband's family have been suffering from a debilitating genetic condition. They consult a doctor and he refers them to a geneticist. The geneticist asks them about their entire family history up to 5 generations and gives them the advice.

A pair of contrasting characters is called

A. Phenotype

B. Genotype

C. Homozygosity

D. alleles

Answer: D

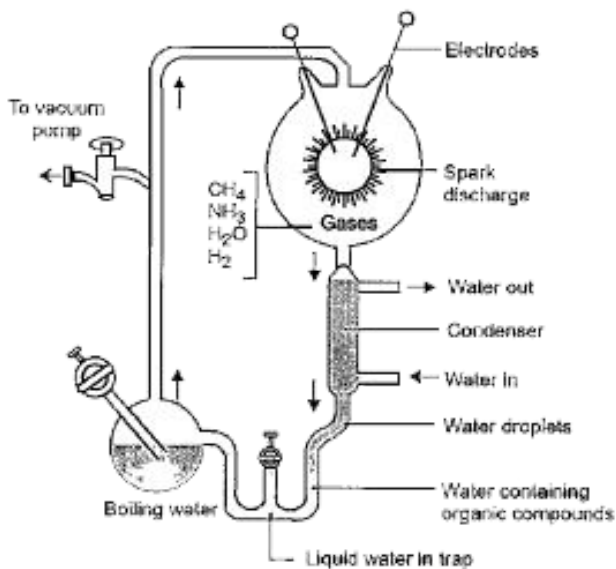


View Text Solution

52. Read the following passage and answer the questions that follow.

Urey & Miller tried to create in the laboratory the similar conditions which might have existed in early primitive atmosphere. A mixture of water vapours, methane, ammonia

& hydrogen is exposed to electric discharge in a closed chamber, this fluid thus formed is allowed to stand for several weeks as a result, amino acids e.g. glycine & alanine are formed from fluid. They suggested that electric discharge produced during lightning in primitive atmosphere of earth might have resulted in formation of organic



Who were the two scientists that conducted an experiment to synthesise organic molecule abiotically?

A. Urey

B. Miller

C. Both (a) and (b)

D. Stanley

Answer: C

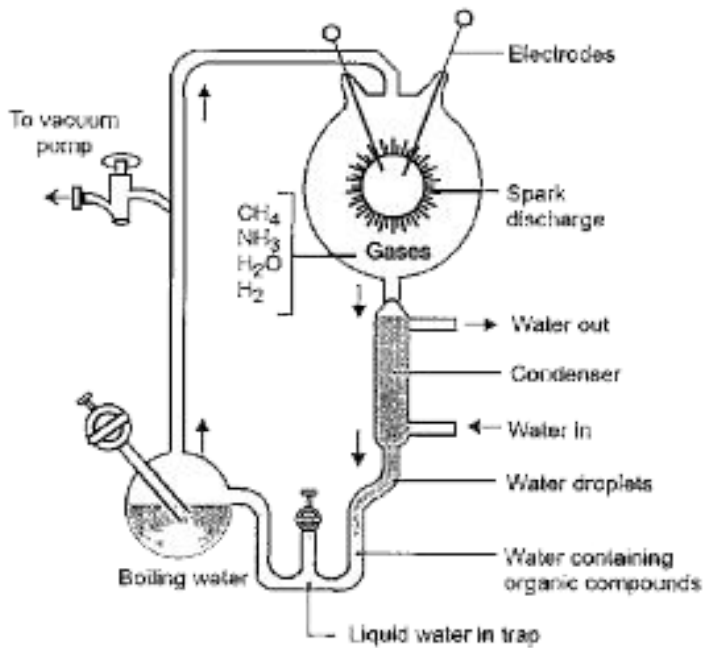


View Text Solution

53. Read the following passage and answer the questions that follow.

Urey & Miller tried to create in the laboratory the similar conditions which might have existed in early primitive atmosphere. A mixture of water vapours, methane, ammonia

& hydrogen is exposed to electric discharge in a closed chamber, this fluid thus formed is allowed to stand for several weeks as a result, amino acids e.g. glycine & alanine are formed from fluid. They suggested that electric discharge produced during lightning in primitive atmosphere of earth might have resulted in formation of organic



The conclusion of this experiment by scientists was

- A. Life originated through spontaneous generation
- B. Life came from pre-existing life

C. Life came from pre-existing organic molecules

D. Life was created by God

Answer: C

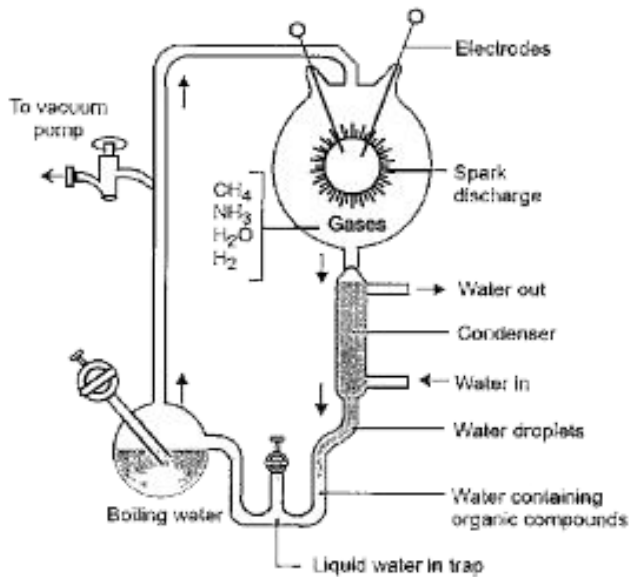


View Text Solution

54. Read the following passage and answer the questions that follow.

Urey & Miller tried to create in the laboratory the similar conditions which might have

existed in early primitive atmosphere. A mixture of water vapours, methane, ammonia & hydrogen is exposed to electric discharge in a closed chamber, this fluid thus formed is allowed to stand for several weeks as a result, amino acids e.g. glycine & alanine are formed from fluid. They suggested that electric discharge produced during lightning in primitive atmosphere of earth might have resulted in formation of organic



The concept of this experiment is based on

- A. Interaction of water, air and clay under intense heat
- B. Effect of solar radiation on chemicals

C. Possible origin of life by combination of chemicals under suitable environmental conditions

D. Crystallization of chemicals

Answer: C

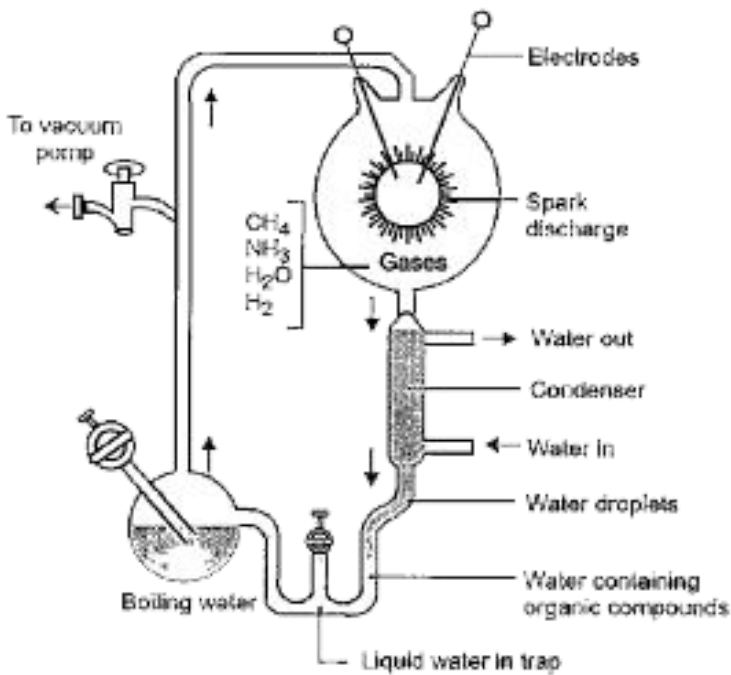


View Text Solution

55. Read the following passage and answer the questions that follow.

Urey & Miller tried to create in the laboratory

the similar conditions which might have existed in early primitive atmosphere. A mixture of water vapours, methane, ammonia & hydrogen is exposed to electric discharge in a closed chamber, this fluid thus formed is allowed to stand for several weeks as a result, amino acids e.g. glycine & alanine are formed from fluid. They suggested that electric discharge produced during lightning in primitive atmosphere of earth might have resulted in formation of organic



This experiment created primitive earth conditions. These conditions include

A. Low temperature, volcanic storms,
atmosphere rich in oxygen

B. Low temperature, volcanic storms,
reducing atmosphere

C. High temperature, volcanic storms, non-
reducing atmosphere

D. High temperature, volcanic storms,
reducing atmosphere

Answer: D

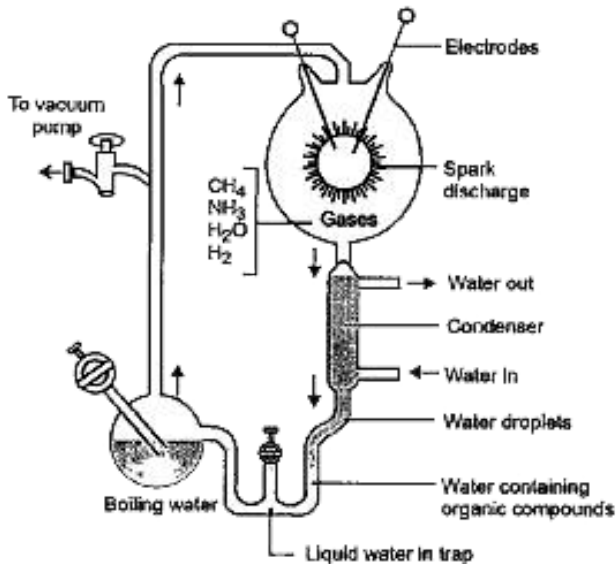


View Text Solution

56. Read the following passage and answer the questions that follow.

Urey & Miller tried to create in the laboratory the similar conditions which might have existed in early primitive atmosphere. A mixture of water vapours, methane, ammonia & hydrogen is exposed to electric discharge in a closed chamber, this fluid thus formed is allowed to stand for several week as a result, amino acids e.g. glycerine & alanine are formed from fluid. They suggested that electric discharge produced during lightening

in primitive atmosphere of earth might have resulted in formation of organic



Miller in his experiment, synthesized simple amino acid from

A. methane, ammonia, oxygen, nitrogen

B. hydrogen, methane, ammonia, water

C. ammonia, methane, carbon dioxide,
oxygen

D. hydrogen, water, oxygen, helium

Answer: B



View Text Solution