



# CHEMISTRY

## BOOKS - KALYANI CHEMISTRY

### (ENGLISH)

# DISTINCTION BETWEEN PAIRS OF COMPOUNDS

**Questions**

## 1. Distinction between pairs of compounds

Ethane and Ethane or Acetylene.



**View Text Solution**

## 2. Distinction between pairs of compounds

Ethylene and Acetylene.



**Watch Video Solution**

### 3. Distinction between pairs of compounds

But-1-yne and But-2-yne



[Watch Video Solution](#)

### 4. Distinction between pairs of compounds

Cyclohexane and Cyclohexene

(a)  $Br_2$  test.

(b) Baeyer's reagent test.



[Watch Video Solution](#)

## 5. Distinction between pairs of compounds

Chloroform ( $CHCl_3$ ) and Carbon tetrachloride ( $CCl_4$ )



[Watch Video Solution](#)

## 6. Distinction between pairs of compounds

Chlorobenzene ( $C_6H_5Cl$ ) and n-hexylchloride ( $C_6H_{13}Cl$ )



[Watch Video Solution](#)

## 7. Distinction between pairs of compounds

Ethyl bromide ( $CH_3CH_2Br$ ) and bromobenzene ( $C_6H_5Br$ )



[Watch Video Solution](#)

## 8. Distinction between pairs of compounds

3-Bromoprop-1-ene ( $CH_2 = CH - CH_2Br$ ) and 1-Bromopropane ( $CH_3CH_2CH_2Br$ ).

(a)  $Br_2$  test.

(b) Baeyer's reagent test.



[Watch Video Solution](#)

**9. Distinction between pairs of compounds**

1, 1-Dichloroethane and 1, 2-dichloroethane.



**Watch Video Solution**

**10. Distinction between pairs of compounds**

n-Propyl iodide ( $CH_3CH_2CH_2I$ ) and

isopropyl iodide ( $CH_3CHICH_3$ )



**Watch Video Solution**

## 11. Distinction between pairs of compounds

Methanol ( $CH_3OH$ ) and ethanol  
( $CH_3CH_2OH$ )



[Watch Video Solution](#)

## 12. Distinction between pairs of compounds

Methanol ( $CH_3OH$ ) and Phenol ( $C_6H_5OH$ )

(i)  $Br_2$ -water test.

(ii)  $FeCl_3$  test.

(iii) Litmus test.



[Watch Video Solution](#)

### 13. Distinction between pairs of compounds

Phenol ( $C_6H_5OH$ ) and Cyclohexanol

( $C_6H_{11}OH$ )

(i)  $Br_2$ -water test.

(ii)  $FeCl_3$  test.



[Watch Video Solution](#)

### 14. Distinction between pairs of compounds

Propan-1-ol ( $CH_3CH_2CH_2OH$ ) and Propan-2-



ol ( $CH_3CHOHCH_3$ )



Watch Video Solution

15. Distinction between pairs of compounds

Butan-1-ol ( $CH_3CH_2CH_2CH_2OH$ ) and

butan-2-ol ( $CH_3CHOHCH_2CH_3$ )



Watch Video Solution

16. Distinction between pairs of compounds

Secondary

butylalcohol

$(CH_3CHOHCH_2CH_3)$  and tertiary butyl alcohol  $[(CH_3)_3COH]$

(a) Lucas Test.

(b) Iodoform test.



**Watch Video Solution**

**17. Distinction between pairs of compounds**

Phenyl acetaldehyde ( $C_6H_5CH_2CHO$ ) and acetophenone ( $C_6H_5COCH_3$ )

(a) By the use of Tollens' reagent and Fehling

solution.

Iodoform Test.



Watch Video Solution

**18.** Distinction between pairs of compounds

Pentanal ( $CH_3CH_2CH_2CH_2CHO$ ) and

diethyl ketone ( $CH_3CH_2COCH_2CH_3$ )

(a) Fehling Solution test.

Tollens' reagent Test.



Watch Video Solution

## 19. Distinction between pairs of compounds

Diethyl Ketone ( $CH_3CH_2COCH_2CH_3$ ) and acetone ( $CH_3COCH_3$ )

(a) Iodoform test.

Sodium bisulfite test.



[Watch Video Solution](#)

## 20. Distinction between pairs of compounds

Propanal ( $CH_3CH_2CHO$ ) and Propanone ( $CH_3COCH_3$ )

(a) By the use of Tollens' reagent and Fehling

Solution.

(b) By iodoform test.



Watch Video Solution

**21.** Distinction between pairs of compounds

Ethylamine ( $CH_3CH_2NH_2$ ) and diethylamine

( $CH_3CH_2NHCH_2CH_3$ )



Watch Video Solution

## 22. Distinction between pairs of compounds

Pentan-2-one, ( $CH_3COCH_2CH_2CH_3$ ) and pentan-3-one.



[Watch Video Solution](#)

## 23. Distinction between pairs of compounds

Ethanol ( $CH_3CH_2OH$ ) and Phenol ( $C_6H_5OH$ )



[Watch Video Solution](#)

## 24. Distinction between pairs of compounds

Ethanol ( $CH_3CH_2OH$ ) and benzyl alcohol

( $C_6H_5CH_2OH$ )



[Watch Video Solution](#)

## 25. Distinction between pairs of compounds

Benzaldehyde ( $C_6H_5CHO$ ) and acetone

( $CH_3COCH_3$ )

(a) Tollens' reagent test.

(b) Iodoform test.



[Watch Video Solution](#)

## 26. Distinction between pairs of compounds

Phenol ( $C_6H_5OH$ ) and Acetic acid  
( $CH_3COOH$ )

(a)  $FeCl_3$  test.

(b)  $NaHCO_3$  test.

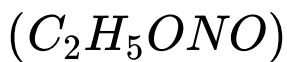


[Watch Video Solution](#)

## 27. Distinction between pairs of compounds

Nitroethane ( $C_2H_5NO_2$ ) and ethyl nitrite





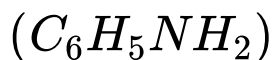
$HNO_2$  test.



Watch Video Solution

**28.** Distinction between pairs of compounds

Ethylamine ( $C_2H_5NH_2$ ) and Aniline



Watch Video Solution

**29. Distinction between pairs of compounds**

Methylamine ( $CH_3NH_2$ ) and dimethylamine  
( $CH_3$ )<sub>2</sub>NH



**Watch Video Solution**

**30. Distinction between pairs of compounds**

Benzoic acid ( $C_6H_5COOH$ ) and Phenol  
( $C_6H_5OH$ )

(a)  $FeCl_3$  test.

(b)  $NaHCO_3$  test.





Watch Video Solution

**31.** Distinction between pairs of compounds

Ethyl cyanide ( $CH_3CH_2CN$ ) and ethyl

isocyanide ( $CH_3CH_2N \overset{\ominus}{\rightarrow} C$ )



Watch Video Solution

**32.** Distinction between pairs of compounds

Acetaldehyde ( $CH_3CHO$ ) and acetone

( $CH_3COCH_3$ )



Watch Video Solution

**33. Distinction between pairs of compounds**

Acetaldehyde ( $CH_3CHO$ ) and benzaldehyde ( $C_6H_5CHO$ ).



**Watch Video Solution**

**34. Distinction between pairs of compounds**

Chlorobenzene ( $C_6H_5Cl$ ) and benzyl chloride ( $C_6H_5CH_2Cl$ )



**Watch Video Solution**

**35.** Distinction between pairs of compounds

p-chlorotoluene ( $p\text{-ClC}_6\text{H}_4\text{CH}_3$ ) and benzyl

chloride ( $\text{C}_6\text{H}_5\text{CH}_2\text{Cl}$ )



**Watch Video Solution**

**36.** Distinction between pairs of compounds

Chlorobenzene ( $\text{C}_6\text{H}_5\text{Cl}$ ) and

chlorocyclohexane



**Watch Video Solution**

**37. Distinction between pairs of compounds**

Bromobenzene  $C_6H_5Br$  and benzyl bromide



**Watch Video Solution**

**38. Distinction between pairs of compounds**

Propanone ( $CH_3COCH_3$ ) and ethanol



**Watch Video Solution**

**39.** Distinction between pairs of compounds

Ethanol ( $CH_3CH_2OH$ ) and 1-Propanol  
( $CH_3CH_2CH_2OH$ )



**Watch Video Solution**

**40.** Distinction between pairs of compounds

Ethyl alcohol and 2-propanol



**Watch Video Solution**

#### 41. Distinction between pairs of compounds

Acetophenone ( $C_6H_5COCH_3$ ) and

benzophenone ( $C_6H_5COC_6H_5$ )



[Watch Video Solution](#)

#### 42. Distinction between pairs of compounds

Aniline ( $C_6H_5NH_2$ ) and N-methylaniline



[Watch Video Solution](#)



### 43. Distinction between pairs of compounds

Aniline and Nitrobenzene



[Watch Video Solution](#)

### 44. Distinction between pairs of compounds

Aniline and N, N-dimethylaniline

1. Carbylamine test.
2. Reaction with Hinsberg's reagent.



[Watch Video Solution](#)

## 45. Distinction between pairs of compounds

Acetic acid and Acetone

Iodoform test.



[Watch Video Solution](#)

## 46. Distinction between pairs of compounds

Methanol and Ethanol



[Watch Video Solution](#)

**47.** Distinction between pairs of compounds

Methylamine and methylethylamine.



**Watch Video Solution**

**48.** Distinction between pairs of compounds

Benzene and phenol.



**Watch Video Solution**

## 49. Distinction between pairs of compounds

n-Hexylamine and aniline



[Watch Video Solution](#)

## 50. Distinction between pairs of compounds

Propanol ( $CH_3CH_2CH_2OH$ ) and Propanone  
( $CH_3COCH_3$ )



[Watch Video Solution](#)

## 51. Distinction between pairs of compounds

Phenol and Benzyl alcohol.

1. Litmus Test.
2. Bromine water test.



[Watch Video Solution](#)

## 52. Distinction between pairs of compounds

Ethane and Ethane or Acetylene.



[View Text Solution](#)

### 53. Distinction between pairs of compounds

Ethylene and Acetylene.



[Watch Video Solution](#)

### 54. Distinction between pairs of compounds

But-1-yne and But-2-yne



[Watch Video Solution](#)

## 55. Distinction between pairs of compounds

Cyclohexene and Cyclohexane

(a)  $Br_2$  test.

(b) Baeyer's reagent test.



[Watch Video Solution](#)

## 56. Distinction between pairs of compounds

Chloroform ( $CHCl_3$ ) and Carbon  
tetrachloride ( $CCl_4$ )



[Watch Video Solution](#)

**57. Distinction between pairs of compounds**

Chlorobenzene ( $C_6H_5Cl$ ) and n-hexylchloride  
( $C_6H_{13}Cl$ )



**Watch Video Solution**

**58. Distinction between pairs of compounds**

Ethyl bromide ( $CH_3CH_2Br$ ) and  
bromobenzene ( $C_6H_5Br$ )



**Watch Video Solution**



**59.** Distinction between pairs of compounds

3-Bromoprop-1-ene ( $CH_2 = CH - CH_2Br$ )

and 1-Bromopropane ( $CH_3CH_2CH_2Br$ ).

(a)  $Br_2$  test.

(b) Baeyer's reagent test.



**Watch Video Solution**

**60.** Distinction between pairs of compounds

1, 1-Dichloroethane and 1, 2-dichloroethane.



**Watch Video Solution**

**61.** Distinction between pairs of compounds

n-Propyl iodide ( $CH_3CH_2CH_2I$ ) and

isopropyl iodide ( $CH_3CHICH_3$ )



**Watch Video Solution**

**62.** Distinction between pairs of compounds

Methanol ( $CH_3OH$ ) and ethanol

( $CH_3CH_2OH$ )



**Watch Video Solution**

**63.** Distinction between pairs of compounds

Methanol ( $CH_3OH$ ) and Phenol ( $C_6H_5OH$ )

(i)  $Br_2$ -water test.

(ii)  $FeCl_3$  test.

(iii) Litmus test.



**Watch Video Solution**

**64.** Distinction between pairs of compounds

Phenol ( $C_6H_5OH$ ) and Cyclohexanol

( $C_6H_{11}OH$ )

(i)  $Br_2$ -water test.

(ii)  $FeCl_3$  test.



[Watch Video Solution](#)

**65.** Distinction between pairs of compounds

Propan-1-ol ( $CH_3CH_2CH_2OH$ ) and Propan-2-

ol ( $CH_3CHOHCH_3$ )



[Watch Video Solution](#)

**66.** Distinction between pairs of compounds

Butan-1-ol ( $CH_3CH_2CH_2CH_2OH$ ) and

butan-2-ol ( $CH_3CHOHCH_2CH_3$ )



**Watch Video Solution**

**67.** Distinction between pairs of compounds

Secondary

butylalcohol

( $CH_3CHOHCH_2CH_3$ ) and tertiary butyl

alcohol [ $(CH_3)_3COH$ ]

(a) Lucas Test.

(b) Iodoform test.



Watch Video Solution

**68.** Distinction between pairs of compounds

Phenyl acetaldehyde ( $C_6H_5CH_2CHO$ ) and

acetophenone ( $C_6H_5COCH_3$ )

(a) By the use of Tollens' reagent and Fehling solution.

Iodoform Test.



Watch Video Solution

**69.** Distinction between pairs of compounds

Pentanal ( $CH_3CH_2CH_2CH_2CHO$ ) and

diethyl ketone ( $CH_3CH_2COCH_2CH_3$ )

(a) Fehling Solution test.

Tollens' reagent Test.



**Watch Video Solution**

**70.** Distinction between pairs of compounds

Diethyl Ketone ( $CH_3CH_2COCH_2CH_3$ ) and

acetone ( $CH_3COCH_3$ )

(a) Iodoform test.

Sodium bisulfite test.



Watch Video Solution

71. Distinction between pairs of compounds

Propanal ( $CH_3CH_2CHO$ ) and Propanone  
( $CH_3COCH_3$ )

(a) By the use of Tollens' reagent and Fehling  
Solution.

(b) By iodoform test.



Watch Video Solution



**72.** Distinction between pairs of compounds

Ethylamine ( $CH_3CH_2NH_2$ ) and diethylamine

( $CH_3CH_2NHCH_2CH_3$ )



**Watch Video Solution**

**73.** Distinction between pairs of compounds

Pentan-2-one, ( $CH_3COCH_2CH_2CH_3$ ) and

pentan-3-one.



**Watch Video Solution**

74. Give one chemical test to distinguish between pair of compounds

Formic acid and acetic acid.



Watch Video Solution

75. Distinction between pairs of compounds

Ethanol ( $CH_3CH_2OH$ ) and Phenol

( $C_6H_5OH$ )



Watch Video Solution

76. Distinction between pairs of compounds

Ethanol ( $CH_3CH_2OH$ ) and benzyl alcohol

( $C_6H_5CH_2OH$ )



[Watch Video Solution](#)

77. Distinction between pairs of compounds

Benzaldehyde ( $C_6H_5CHO$ ) and acetone

( $CH_3COCH_3$ )

(a) Tollens' reagent test.

(b) Iodoform test.



[Watch Video Solution](#)

**78.** Distinction between pairs of compounds

Phenol ( $C_6H_5OH$ ) and Acetic acid  
( $CH_3COOH$ )

(a)  $FeCl_3$  test.

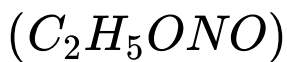
(b)  $NaHCO_3$  test.



**Watch Video Solution**

**79.** Distinction between pairs of compounds

Nitroethane ( $C_2H_5NO_2$ ) and ethyl nitrite



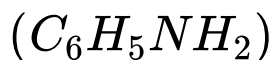
$HNO_2$  test.



Watch Video Solution

**80.** Distinction between pairs of compounds

Ethylamine ( $C_2H_5NH_2$ ) and Aniline



Watch Video Solution

**81. Distinction between pairs of compounds**

Methylamine ( $CH_3NH_2$ ) and dimethylamine  
( $CH_3$ )<sub>2</sub>NH



**Watch Video Solution**

**82. Distinction between pairs of compounds**

Benzoic acid ( $C_6H_5COOH$ ) and Phenol  
( $C_6H_5OH$ )

(a)  $FeCl_3$  test.

(b)  $NaHCO_3$  test.





Watch Video Solution

**83.** Distinction between pairs of compounds

Ethylamine ( $CH_3CH_2NH_2$ ) and diethylamine  
( $CH_3CH_2NHCH_2CH_3$ )



Watch Video Solution

**84.** Distinction between pairs of compounds

Acetaldehyde ( $CH_3CHO$ ) and acetone  
( $CH_3COCH_3$ )



Watch Video Solution

**85.** Distinction between pairs of compounds

Acetaldehyde ( $CH_3CHO$ ) and benzaldehyde ( $C_6H_5CHO$ ).



**Watch Video Solution**

**86.** Distinction between pairs of compounds

Chlorobenzene ( $C_6H_5Cl$ ) and benzyl chloride ( $C_6H_5CH_2Cl$ )



**Watch Video Solution**



**87.** Distinction between pairs of compounds

p-chlorotoluene ( $p\text{-ClC}_6\text{H}_4\text{CH}_3$ ) and benzyl

chloride ( $\text{C}_6\text{H}_5\text{CH}_2\text{Cl}$ )



**Watch Video Solution**

**88.** Distinction between pairs of compounds

Chlorobenzene ( $\text{C}_6\text{H}_5\text{Cl}$ ) and

chlorocyclohexane



**Watch Video Solution**

**89.** Distinction between pairs of compounds

Bromobenzene  $C_6H_5Br$  and benzyl bromide



**Watch Video Solution**

**90.** Distinction between pairs of compounds

Propanone ( $CH_3COCH_3$ ) and ethanol



**Watch Video Solution**

**91.** Distinction between pairs of compounds

Ethanol ( $CH_3CH_2OH$ ) and Phenol  
( $C_6H_5OH$ )



**Watch Video Solution**

**92.** Distinction between pairs of compounds

Ethyl alcohol and 2-propanol



**Watch Video Solution**

**93.** Distinction between pairs of compounds

Acetophenone ( $C_6H_5COCH_3$ ) and

benzophenone ( $C_6H_5COC_6H_5$ )



[Watch Video Solution](#)

**94.** Distinction between pairs of compounds

Aniline ( $C_6H_5NH_2$ ) and N-methylaniline



[Watch Video Solution](#)

## 95. Distinction between pairs of compounds

Aniline and Nitrobenzene



[Watch Video Solution](#)

## 96. Distinction between pairs of compounds

Aniline and N, N-dimethylaniline

1. Carbylamine test.
2. Reaction with Hinsberg's reagent.



[Watch Video Solution](#)

## 97. Distinction between pairs of compounds

Acetic acid and Acetone

Iodoform test.



[Watch Video Solution](#)

## 98. Distinction between pairs of compounds

Methanol and Ethanol



[Watch Video Solution](#)

**99.** Distinction between pairs of compounds

Methylamine and methylethylamine.



**Watch Video Solution**

**100.** Distinction between pairs of compounds

Benzene and phenol.



**Watch Video Solution**

## 101. Distinction between pairs of compounds

n-Hexylamine and aniline



[Watch Video Solution](#)

## 102. Distinction between pairs of compounds

Propanol ( $CH_3CH_2CH_2OH$ ) and Propanone  
( $CH_3COCH_3$ )



[Watch Video Solution](#)



### **103.** Distinction between pairs of compounds

Phenol and Benzyl alcohol.

1. Litmus Test.
2. Bromine water test.



**Watch Video Solution**

### **104.** Distinction between pairs of compounds

Ethane and Ethyne or Acetylene.



**Watch Video Solution**

**105.** Distinction between pairs of compounds

Ethylene and Acetylene.



**Watch Video Solution**

**106.** Distinction between pairs of compounds

But-1-yne and But-2-yne



**Watch Video Solution**

**107.** Distinction between pairs of compounds

Cyclohexane and Cyclohexene

(a)  $Br_2$  test.

(b) Baeyer's reagent test.



**Watch Video Solution**

**108.** Distinction between pairs of compounds

Chloroform ( $CHCl_3$ ) and Carbon

tetrachloride ( $CCl_4$ )



**Watch Video Solution**

**109.** Distinction between pairs of compounds

Chlorobenzene ( $C_6H_5Cl$ ) and n-hexylchloride

( $C_6H_{13}Cl$ )



**Watch Video Solution**

**110.** Distinction between pairs of compounds

Ethyl bromide ( $CH_3CH_2Br$ ) and

bromobenzene ( $C_6H_5Br$ )



**Watch Video Solution**

**111.** Distinction between pairs of compounds

3-Bromoprop-1-ene ( $CH_2 = CH - CH_2Br$ )

and 1-Bromopropane ( $CH_3CH_2CH_2Br$ ).

(a)  $Br_2$  test.

(b) Baeyer's reagent test.



[Watch Video Solution](#)

**112.** Distinction between pairs of compounds

1, 1-Dichloroethane and 1, 2-dichloroethane.



[Watch Video Solution](#)

**113.** Distinction between pairs of compounds

n-Propyl iodide ( $CH_3CH_2CH_2I$ ) and

isopropyl iodide ( $CH_3CHICH_3$ )



[Watch Video Solution](#)

**114.** Distinction between pairs of compounds

Methanol ( $CH_3OH$ ) and ethanol

( $CH_3CH_2OH$ )



[Watch Video Solution](#)

**115.** Distinction between pairs of compounds

Methanol ( $CH_3OH$ ) and Phenol ( $C_6H_5OH$ )

(i)  $Br_2$ -water test.

(ii)  $FeCl_3$  test.

(iii) Litmus test.



**Watch Video Solution**

**116.** Distinction between pairs of compounds

Phenol ( $C_6H_5OH$ ) and Cyclohexanol

( $C_6H_{11}OH$ )

(i)  $Br_2$ -water test.

(ii)  $FeCl_3$  test.



Watch Video Solution

**117.** Distinction between pairs of compounds

Propan-1-ol ( $CH_3CH_2CH_2OH$ ) and Propan-2-  
ol ( $CH_3CHOHCH_3$ )



Watch Video Solution



### 118. Distinction between pairs of compounds

Butan-1-ol ( $CH_3CH_2CH_2CH_2OH$ ) and

butan-2-ol ( $CH_3CHOHCH_2CH_3$ )



Watch Video Solution

### 119. Distinction between pairs of compounds

Secondary

butylalcohol

( $CH_3CHOHCH_2CH_3$ ) and tertiary butyl

alcohol [ $(CH_3)_3COH$ ]

(a) Lucas Test.

(b) Iodoform test.



Watch Video Solution

**120.** Distinction between pairs of compounds

Phenyl acetaldehyde ( $C_6H_5CH_2CHO$ ) and

acetophenone ( $C_6H_5COCH_3$ )

(a) By the use of Tollens' reagent and Fehling solution.

Iodoform Test.



Watch Video Solution

**121.** Distinction between pairs of compounds

Pentanal ( $CH_3CH_2CH_2CH_2CHO$ ) and

diethyl ketone ( $CH_3CH_2COCH_2CH_3$ )

(a) Fehling Solution test.

Tollens' reagent Test.



**Watch Video Solution**

**122.** Distinction between pairs of compounds

Diethyl Ketone ( $CH_3CH_2COCH_2CH_3$ ) and

acetone ( $CH_3COCH_3$ )

(a) Iodoform test.

Sodium bisulfite test.



Watch Video Solution

**123.** Distinction between pairs of compounds

Propanal ( $CH_3CH_2CHO$ ) and Propanone  
( $CH_3COCH_3$ )

(a) By the use of Tollens' reagent and Fehling  
Solution.

(b) By iodoform test.



Watch Video Solution

**124.** Distinction between pairs of compounds

Ethylamine ( $CH_3CH_2NH_2$ ) and diethylamine

( $CH_3CH_2NHCH_2CH_3$ )



[Watch Video Solution](#)

**125.** Distinction between pairs of compounds

Pentan-2-one, ( $CH_3COCH_2CH_2CH_3$ ) and

pentan-3-one.



[Watch Video Solution](#)

**126.** Give one chemical test to distinguish between pair of compounds

Formic acid and acetic acid.



[Watch Video Solution](#)

**127.** Distinction between pairs of compounds

Ethanol ( $CH_3CH_2OH$ ) and Phenol

( $C_6H_5OH$ )



[Watch Video Solution](#)

**128.** Distinction between pairs of compounds

Ethanol ( $CH_3CH_2OH$ ) and benzyl alcohol

( $C_6H_5CH_2OH$ )



**Watch Video Solution**

**129.** Distinction between pairs of compounds

Benzaldehyde ( $C_6H_5CHO$ ) and acetone

( $CH_3COCH_3$ )

(a) Tollens' reagent test.

(b) Iodoform test.



**Watch Video Solution**

**130.** Distinction between pairs of compounds

Phenol ( $C_6H_5OH$ ) and Acetic acid  
( $CH_3COOH$ )

(a)  $FeCl_3$  test.

(b)  $NaHCO_3$  test.

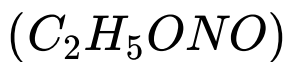


**Watch Video Solution**

**131.** Distinction between pairs of compounds

Nitroethane ( $C_2H_5NO_2$ ) and ethyl nitrite





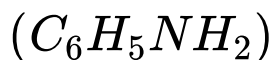
$HNO_2$  test.



Watch Video Solution

**132.** Distinction between pairs of compounds

Ethylamine ( $C_2H_5NH_2$ ) and Aniline



Watch Video Solution

**133.** Distinction between pairs of compounds

Methylamine ( $CH_3NH_2$ ) and dimethylamine

$(CH_3)_2NH$



[Watch Video Solution](#)

**134.** Distinction between pairs of compounds

Benzoic acid ( $C_6H_5COOH$ ) and Phenol

$(C_6H_5OH)$

(a)  $FeCl_3$  test.

(b)  $NaHCO_3$  test.





Watch Video Solution

**135.** Distinction between pairs of compounds

Ethyl cyanide ( $CH_3CH_2CN$ ) and ethyl

isocyanide ( $CH_3CH_2N \overset{\equiv}{\rightarrow} C$ )



Watch Video Solution

**136.** Distinction between pairs of compounds

Acetaldehyde ( $CH_3CHO$ ) and acetone

( $CH_3COCH_3$ )



Watch Video Solution

**137.** Distinction between pairs of compounds  
Acetaldehyde ( $CH_3CHO$ ) and benzaldehyde  
( $C_6H_5CHO$ ).



[Watch Video Solution](#)

**138.** Distinction between pairs of compounds  
Chlorobenzene ( $C_6H_5Cl$ ) and benzyl chloride  
( $C_6H_5CH_2Cl$ )



[Watch Video Solution](#)

**139.** Distinction between pairs of compounds

p-chlorotoluene ( $p\text{-ClC}_6\text{H}_4\text{CH}_3$ ) and benzyl

chloride ( $\text{C}_6\text{H}_5\text{CH}_2\text{Cl}$ )



[Watch Video Solution](#)

**140.** Distinction between pairs of compounds

Chlorobenzene ( $\text{C}_6\text{H}_5\text{Cl}$ ) and

chlorocyclohexane



[Watch Video Solution](#)

**141.** Distinction between pairs of compounds

Bromobenzene  $C_6H_5Br$  and benzyl bromide



**Watch Video Solution**

**142.** Distinction between pairs of compounds

Propanone ( $CH_3COCH_3$ ) and ethanol



**Watch Video Solution**

**143.** Distinction between pairs of compounds

Ethanol ( $CH_3CH_2OH$ ) and Phenol

( $C_6H_5OH$ )



**Watch Video Solution**

**144.** Distinction between pairs of compounds

Ethyl alcohol and 2-propanol



**Watch Video Solution**

**145.** Distinction between pairs of compounds

Acetophenone ( $C_6H_5COCH_3$ ) and

benzophenone ( $C_6H_5COC_6H_5$ )



**Watch Video Solution**

**146.** Distinction between pairs of compounds

Aniline ( $C_6H_5NH_2$ ) and N-methylaniline



**Watch Video Solution**



## 147. Distinction between pairs of compounds

Aniline and Nitrobenzene



[Watch Video Solution](#)

## 148. Distinction between pairs of compounds

Aniline and N, N-dimethylaniline

1. Carbylamine test.
2. Reaction with Hinsberg's reagent.



[Watch Video Solution](#)

## 149. Distinction between pairs of compounds

Acetic acid and Acetone

Iodoform test.



[Watch Video Solution](#)

## 150. Distinction between pairs of compounds

Methanol and Ethanol



[Watch Video Solution](#)

**151.** Distinction between pairs of compounds

Methylamine and methylethylamine.



**Watch Video Solution**

**152.** Distinction between pairs of compounds

Benzene and phenol.



**Watch Video Solution**

**153.** Distinction between pairs of compounds

n-Hexylamine and aniline



**Watch Video Solution**

**154.** Distinction between pairs of compounds

Propanol ( $CH_3CH_2CH_2OH$ ) and Propanone  
( $CH_3COCH_3$ )



**Watch Video Solution**

## 155. Distinction between pairs of compounds

Phenol and Benzyl alcohol.

1. Litmus Test.
2. Bromine water test.



**Watch Video Solution**