



BIOLOGY

BOOKS - AAKASH SERIES

CHEMICAL COORDINATION AND INTERGRATION

Exercise I

1. identify A and B using the given information

A	B
* It regulates and coordinates the cellular activities.	* It provides a point to point coordination among the organs.
* The coordination is slow and long lasting.	* It is fast but short lived.

A. A-Enzyme coordination, B-hormonal coordination

B. A-neural coordination, B-hormonal coordination

C. A-Hormonal

coordination,B-neural

coordination

D. A-Hormona

coordination,B-Enzyme

coordination

Answer: C



Watch Video Solution

2. Which one of the following statement is correct?

A. Endocrine glands regulate neural activity

but not vice versa

B. Neurons regulate endocrine activity, but

not vice versa

C. Endocrine glands regulate neural activity

, and nervous system regulates endocrine

activity

D. Neither hormones control neural activity

nor the neurons control endocrine

activity

Answer: C



Watch Video Solution

3. Which of the following hormones is derived from a single amino acid?

A. thyroxine

B. oxytocin

C. estradiol

D. epinephrine

Answer: C



Watch Video Solution

4. How can enzymes, vitamins and hormones be classified into a single category of biological chemicals?

A. help in regulating metabolism

B. are exclusively synthesized in the body of living organism as at present

C. are conjugated proteins

D. enhance oxidative metabolism

Answer: A



Watch Video Solution

5. Which one of the following hormones is modified amino acid?

A. Epinephrine

B. progesterone

C. Prostaglandin

D. Estrogen

Answer: A



Watch Video Solution

6. Fill up the blanks A to C correct combination which A act as --B-- messengers and are produced in -----C---amounts.

A. A-nutrient,B-intercellular,C-trace

B. A-non-nutrient,B-intracellular.C-trace

C. A-non-nutrient,B-Intercellular ,C-trace

D. A-non-nutrient,B-intercellular ,C-large

Answer: C



Watch Video Solution

7. Select the correct answer related to A and B based on their reactions

A	B
* They are consumed in the reaction	* They act as catalyst and remain unchanged
* They are effective only in low concentration	* They are more effective in relatively higher concentration
* The actions controlled by them are not reversible	* The actions controlled by them are reversible

A. A-Hormones,B-vitamins

B. A-Enzymes,B-Hormones

C. A-vitamins,B-Hormones

D. A-vitamins,B-Vitamins

Answer: A



Watch Video Solution

8. "Tropic hormones" Means

A. Pituitary hormones

B. Local hormones

C. Hormones that effect another 'target'
endocrine gland

D. Hormones that have receptors on almost
all living cells of the body.

Answer: C



[Watch Video Solution](#)

9. Endocrine signaling is always a

A. Electrical

B. Mechanical

C. Chemical

D. Physico-chemical

Answer: C



[Watch Video Solution](#)

10. A hormone secreted by non endocrine tissue is

- A. Insulin like growth factor (IGF)
- B. Calcitriol
- C. Cytokine
- D. Enzyme

Answer: A



Watch Video Solution

11. Identify the following bio molecules A,B based on their properties

A	B
* They are rarely synthesized in the body, mostly supplied through food.	* They are synthesized in the body itself.
* In excess they are excreted, but in deficiency they cause diseases.	* Their excess or deficiency may cause health disorders.

A. A-Hormones,B-vitamins

B. A-Enzymes,B-Hormones

C. A-vitamins,B-Hormones

D. A-vitamins,B-cofactors

Answer: C



Watch Video Solution

12. Match the following columns.

Column - I

- A) Protein hormones
- B) Steroid hormones
- C) Iodothyronines hormones
- D) Amino acid derivative hormones

Column - II

- 1) Epinephrine
- 2) Testosterone, progesterone
- 3) Thyroid
- 4) Insulin and glucagon

A. A-1,B-2,C-3,D-4

B. A-4,B-,C-2,D-1

C. A-4,B-2,C-3,D-1

D. A-4,B-2,C-1,D-3

Answer: C



Watch Video Solution

13. Chemically hormones are

A. Biogenic amines only

B. Proteins, steroids and biogenic amines

C. Proteins only

D. Steroids only

Answer: B



Watch Video Solution

14. Hormones are secreted by

A. All living organisms

B. Vertebrates only

C. Invertebrates

D. All metazoans

Answer: D



Watch Video Solution

15. Select the incorrect statement

A. Invertebrates posses very simple

endocrine system

B. Vertebrates posses a large number of

chemicals act as hormones

C. Arthropods are the first invertebrates with well organized endocrine system

D. We get some hormones through the food

Answer: D



Watch Video Solution

16. Largest endocrine gland in humans

A. Liver

B. Thyroid

C. Thymus

D. Pituitary

Answer: B



Watch Video Solution

17. Number of endocrine glands related to the brain

A. One

B. Three

C. Two

D. Five

Answer: B



Watch Video Solution

Exercise I Hypothalamus

1. Gonadotropin releasing hormones are formed by

A. Pituitary

B. Gonads

C. Hypothalamus

D. Placenta

Answer: C



Watch Video Solution

2. Somatostatin produced by hypothalamus

A. Stimulates the release of growth hormone

B. Controls the activity of alpha and beta cells of pancreas

C. Inhibits the release of growth hormone

D. Controls the reabsorption of water in kidney

Answer: C



Watch Video Solution

3. Hypothalamus contains several group of neurosecretory cells called

A. Tract

B. Pituitary gland

C. Nuclei

D. protoplasm

Answer: C



Watch Video Solution

4. Somatostatin

- A. Actiates the release of growth hormone
- B. inhibits the release of growth hormone
- C. Inhibits the release of enzymes in the digestive tract
- D. activates the release of enzymes pineal gland

Answer: B



Watch Video Solution

5. Large number of hormones are secreted by

A. Pituitary hormones

B. Thyroid

C. Hypothalamus

D. Adrenal

Answer: C



Watch Video Solution

6. Majority of endocrine secretions are released into

A. Arteries

B. Gut

C. Veins

D. All the above

Answer: C



Watch Video Solution

7. Mark the correct sequence of synthesis of hormones in human being.

A. GnRh \rightarrow FSH \rightarrow Testosterone

B. GnRH \rightarrow Progesterone \rightarrow LH

C. GnRH \rightarrow LH \rightarrow Testosterone

D. TRH \rightarrow TSH \rightarrow Thyroxine

Answer: C



Watch Video Solution

Exercise I Pituitary Gland

1. Pituitary gland is located

- A. Above epithalamus
- B. Anterior to pineal body
- C. Ventral to trachea
- D. in sella tursica

Answer: D



Watch Video Solution

2. Oxytocin and vasopressin are transported to neurohypophysis through

A. Blood

B. interstitial fluid

C. axons

D. lymph

Answer: C



Watch Video Solution

3. Which of the following hormones is not secreted by anterior pituitary ?

A. Growth hormone

B. Follicle stimulating hormone

C. Oxytocin

D. Adrenocorticotrophic hormone

Answer: C



Watch Video Solution

4. In human pars intermedia is almost merged with

- A. Pars distalis
- B. pars nervosa
- C. pars tuberalis
- D. posterior pituitary

Answer: A



Watch Video Solution

5. Identify A to D in the given figure and choose the correct combination



A. A-Hypothalamic

neuron,B---

hypothalamus,C-portal

circulation,D-

Posterior pituitary

B. A-Hypothalamus, B-Hypothalamic

neuron, C-Portal Circulation, D-Posterior
pituitary

C. A-Hypothalamus, B-Hypothalamic neuron,

C-Posterior pituitary, D-Portal Circulation

D. A-Hypothalamus, B-Hypothalamic

neuron, C-Posterior pituitary, D-

Neurohypophysis.

Answer: B



Watch Video Solution

6. Resorption of water and electrolytes by distal tubules of kidney and thereby diuresis reducing the loss of water through urine (diuresis) is done by

- A. Oxytocin
- B. Vasopressin
- C. FSH
- D. LH

Answer: B



Watch Video Solution

7. Functions of oxytocin is/are

A. Smooth muscle contraction

B. Contraction of uterus

C. Milk ejection

D. All of the above

Answer: D

 [Watch Video Solution](#)

8. MSH is secreted by

- A. Anterior lobe of pituitary
- B. Middle lobe of pituitary
- C. posterior lobe of pituitary
- D. Endostyle

Answer: B

 [Watch Video Solution](#)

9. Mainly which type of hormones control the menstrual cycle in human beings

A. FSH

B. LH

C. FSH,LH,estrogen

D. Progesterone

Answer: C



Watch Video Solution

10. Which set is similar?

A. Corpus luteum-Graafian follicles

B. Sebum -sweat

C. Bundle of His-pace maker

D. Vitamin B_7 -Niacin

Answer: A



Watch Video Solution

11. Sertoli cells are regulated by the pituitary hormone known as –

A. LH

B. FSH

C. GH

D. Prolactin

Answer: B



Watch Video Solution

12. Match the following and choose correct one

Column-I	Column-II
A) Hypothalamus	1) Lactation after child birth
B) Anterior pituitary	2) Resbsorption of water by nephrons
C) ADH	3) FSH and LH
D) Prolactin	4) Gonadotropin releasing hormone

A. A-2,B-4.C-3,D-1

B. A-1,B-3,C-2,D-4

C. A-4,B-3,C-2,D-1

D. A-2,B-3,C-1,D-4

Answer: C



[Watch Video Solution](#)

13. Which of the following is synthesised in both the brain and endocrine glands?

A. ACTH

B. Cortisol

C. Oxytocin

D. Somatostatin

Answer: D



[Watch Video Solution](#)

14. In females, vigorous contraction of uterus at the time of child birth and milk ejection from the mammary gland is due to

A. LH

B. FSH

C. Oxytocin

D. Progesterone

Answer: C



Watch Video Solution

15. Two hormones.....(a).....and (b).....synthesize in hypothalamus and transported in pituitary gland through (C)..... And(d).....respectively.

A. a=oxytocin → C=portal circulation

b=ADH ⇒ d=direct release

B. a=ADH ⇒ C=axonal transport

b=TSHRF implies~d=portal circulation

C. a=ACTH \Rightarrow =axonal transport

b=MSH \Rightarrow c=portal circulation

D. a=TSHRF \Rightarrow c=axonal transport

b=ADH \Rightarrow d=portal circulation

Answer: B



Watch Video Solution

16. A person suffers from frequent urination feels thirsty and there is no glucose in the urine ,what may be the cause

A. Hyposecretion of posterior lobe of
pituitary

B. Hypersecretion of posterior lobe of
pituitary

C. Hyposecretion of adrenal gland

D. Hyper secretion of thyroid

Answer: A



Watch Video Solution

17. Statement -I prolactin has no role in males
statement-II prolactin is a maternity hormone

A. Statement-I and statement -II both are
correct

B. Statement -I is correct and statement -is
wrong

C. Statement -I is wrong and statement -II is
correct

D. Both statement -I and statement -II are
wrong

Answer: C



Watch Video Solution

18. Which of the following is an accumulation and release centre of neurohormones ?

- A. Anterior pituitary lobe
- B. Posterior pituitary lobe
- C. Intermediate lobe of the pituitary
- D. Hypothalamus

Answer: B



Watch Video Solution

19. The hormones acting on mammary glands

A. FSH and LH

B. Oxytocin and prolactin

C. LH, Prolactin and oxytocin

D. Vasopressin and prolactin

Answer: B

20. Gigantism in children occurs due to the hyper secretion of

A. hGH

B. ACTH

C. LTH

D. ICSH

Answer: A

21. Secretion of which of the following antagonistic hormones is not under the control of pituitary gland?

A. PTH-Calcitonin

B. Calcitonin-Calcitriol

C. Glucocorticoids-cortisol

D. LH-FSH

Answer: B



Watch Video Solution

22. Identify the following hormonal disorders A and B based on the their characters

A	B
* Due to hypersecretion of GH from an early age.	* Due to hypersecretion of GH after adolescence.
* Characterized by abnormally elongated long bones.	* Disproportionate facial features, gorilla like appearance.

A. A-Acromegaly ,B-Gigantism

B. A-Critinism,B-Acromegaly

C. A-Gigantism,B-Midget

D. A-Gigantism,B-Acromegaly

Answer: D



Watch Video Solution

23. Diabetes insipidus is caused by the deficiency of hormone

A. Glucagon

B. Insulin

C. ADH

D. Secretin

Answer: C



Watch Video Solution

24. Hypersecretion of hGH during adulthood causes

A. Dwarfism

B. Osteoporosis

C. Acromegaly

D. Addison's disease

Answer: C



Watch Video Solution

25. Disproportionate gigantism is termed

A. Acromegaly

B. Cretinism

C. Dwarfism

D. Myxoedema

Answer: A



Watch Video Solution

26. Occurrence of diuresis following saline water ingestion is due to

A. Suppression of adrenocorticoid release

B. reduction in the rate of water absorption
by kidney capillaries

C. Suppression of ADH release

D. Reduction of colloidal osmotic pressure
of blood

Answer: C



Watch Video Solution

27. Pigmentation of skin is influenced by

A. FSH

B. LH

C. MSH

D. ACTH

Answer: C



Watch Video Solution

28. Corpus luteum is maintained by

A. LH

B. GH

C. ACTH

D. Oxytocin

Answer: A



Watch Video Solution

29. Fill up the blanks spaces in the table below by selecting correct option

Hormone	Produced by	Stimulates	Result
A	Anterior pituitary	Sertoli cells	Spermio-genesis
GnRH	B	Anterior pituitary	Secretion of gonado-tropins
Oxytocin	Maternal pituitary	C	Parturition
Relaxin	Placenta	Pelvic ligaments	D

A. A-FSH,B-Hypothalamus,C-Uterine

muscles,D-Easy delivery

B. A-LH,B-Hypothalamus,C-Uterus,D-

Mammary glands

C. A-Testosterone,B-Anterior pituitary,C-

Mammary glands,D-milk ejection

D. A-Inhibin,B-Anterior pituitary ,C-Ovaries,D-

prevents ovulation.

Answer: A



Watch Video Solution

30. In a pregnant woman having prolonged labour pains if child birth has to be hastened i.e. ,to aid parturition ,it is advisable to administer a hormone that can

- A. Activate smooth muscles
- B. increase merabolic rate
- C. release glucose into the blood
- D. Stimulate ovary

Answer: A



[Watch Video Solution](#)

31. Corpus luteum is maintained by

- A. Luteizing hormone & lactogenic hormone
- B. Luteotropic hormone & FSH
- C. ICSH & progesterone
- D. ICSH & progesterone

Answer: A



[Watch Video Solution](#)

32. Pituitary gland is divided into

A. Adenohypophysis and neurohypophysis

B. adenohypophysis and pars distalis

C. adenohypophysis and pars intermedia

D. adenohypophysis and anterior pituitary

Answer: A



Watch Video Solution

33. Gigantism and dwarfism are the disease related to

- A. Prolactin hormone of mammary gland
- B. growth hormone of adenohypophysis
- C. luteinising hormone of pituitary gland
- D. thyroid stimulating hormone of thyroid

Answer: B



Watch Video Solution

Exercise I Pineal Gland

1. The function of pineal body is to

- A. lighten the skin colour
- B. control sexual behavior
- C. regulate periods of puberty
- D. all of the above

Answer: D



Watch Video Solution

2. Diurnal rhythm of our body is maintained by

A. thyroid gland

B. pineal gland

C. pituitary gland

D. Hypothalamus

Answer: B



Watch Video Solution

3. Melanocyte stimulating hormone is secreted by

A. Pars intermedia

B. pars nervosa

C. pars distalis

D. thymus

Answer: A



Watch Video Solution

4. Pigmentation of skin is maintained by

A. GH

B. ADH

C. MSH

D. thyroxin

Answer: C



Watch Video Solution

5. Sleep -wake cycle,menstrual cycle are influenced by

A. thyroxine

B. calcitonin

C. FSH

D. melatonin

Answer: D



Watch Video Solution

6. A hormone responsible for normal sleep wake cycle is

A. Epinephrine

B. Gastrin

C. Melatonin

D. Insulin

Answer: C



Watch Video Solution

Exercise I Thyroid Gland

1. Basal Metabolic Rate is influenced by

A. GH

B. Glucagon

C. thyroxine

D. ADH

Answer: C



Watch Video Solution

2. The thyroid gland is composed of

A. follicles

B. stromal tissue

C. trachea

D. Both (1) and (2)

Answer: D



Watch Video Solution

3. a growing baby is characterized by stunted growth, mental retardation, low intelligence quotient, abnormal skin, deaf-mutism etc. it is caused due to

A. hyperthyroidism

B. goitre

C. hypothyroidism

D. Both (2) and (3)

Answer: C



Watch Video Solution

4. Hypothyroidism during pregnancy causes

A. cretinism

B. low IQ

C. deaf-mutism

D. all of these

Answer: D



Watch Video Solution

5. Thymosin is responsible for

- A. raising blood sugar level
- B. raising blood calcium level
- C. maturation of T-lymphocytes
- D. decrease in RBC

Answer: C



Watch Video Solution

6. Oedema behind the eyes caused by hyperthyroidism is termed

- A. Myxoedema
- B. Simple goiter
- C. Exophthalmos
- D. Acromegaly

Answer: C



Watch Video Solution

7. Select the incorrect option

A. Thyroid gland is the largest endocrine gland in humans

B. Thyroid secretes T_3 and T_4

C. Thyroid gland is composed of follicle and stromal tissues

D. Thyroid consists of four lobes

Answer: D



Watch Video Solution

8. Which of the following conditions is not linked to deficiency of thyroid hormone?

A. Cretinism

B. Goitre

C. Myxoedema

D. Exophthalmosis

Answer: D



Watch Video Solution

9. Which of the following diseases is not related to thyroid gland ?

A. Myxoedema

B. Acromegaly

C. Cretinism

D. Goitre

Answer: B



Watch Video Solution

10. Match the following and choose the correct answer

List-I	List-II
A) Cretinism	I) Hypothyroidism in adults
B) Myxoedema	II) Hypothyroidism in children
C) Gigantism	III) Hyper secretion of insulin
D) Acromegaly	IV) Hyper secretion of hGH in children
	V) Hyper secretion of hGH in adults

A. A-II,B-I,C-III,D-IV

B. A-II,B-I,C-IV,D-V

C. A-IV,B-III,C-V,D-II

D. A-II,B-I,C-IV,D-III

Answer: B



Watch Video Solution

11. Endemic goitre is a state of

A. Increased thyroid function

B. normal thyroid function

C. decreased thyroid function

D. Moderate thyroid function

Answer: C

 [Watch Video Solution](#)

12. Hashimoto disease is an autoimmune disorder that effects

A. brain

B. adrenal cortex

C. Thyroid gland

D. adrenal medulla

Answer: C

 [Watch Video Solution](#)

13. Hypothyroidism in adult human beings causes

A. Cretinism

B. Exophthalmos

C. Dwarfism

D. Myxoedema

Answer: D



Watch Video Solution

14. Undersecretion of thyroxine/hypothyroidism in children causes

- A. Cretinism
- B. Graves's disease
- C. Myxoedema
- D. Endemic goiter

Answer: A



Watch Video Solution

15. Enlargement of thyroid due to deficiency of iodine is called

A. Tetany

B. Oedema

C. Acromegaly

D. Simple goiter

Answer: D



Watch Video Solution

16. T_3 and T_4 hormones are synthesised by

- A. follicles
- B. stromal tissue
- C. isthmus
- D. Both (1) and (3)

Answer: A



Watch Video Solution

17. Hyper secretion of thyroxine causes

A. Graves's disease

B. Addison's disease

C. Myxoedema

D. Acromegaly

Answer: A



Watch Video Solution

18. Which one of the followings is not a function of T_4

A. Erythropoiesis

B. Maintenance of water and electrolyte
balance

C. Enhances oxygen consumption

D. Stimulates cell division in epiphyseal
plates of bone

Answer: D



Watch Video Solution

19. Tetany is caused by

A. Hyperparathyroidism

B. Hypoparathyroidism

C. Hyperthyroidism

D. Hypothyroidism

Answer: B



Watch Video Solution

20. Acromegaly is caused by

- A. Excess of STH
- B. Excess of thyroxine
- C. Deficiency of thyroxine
- D. Excess of adrenaline

Answer: A



Watch Video Solution

Exercise I Parathyroid Gland

1. PTH is a

A. hypercalcemic hormone

B. hypocalcemic hormone

C. endocalcemic hormone

D. exocalcemic hormone

Answer: A



Watch Video Solution

2. Significant role of calcium balance in the body is maintained by

A. PTH and FSH

B. PTH and TCT

C. TCT and FSH

D. TCT and GH

Answer: B



Watch Video Solution

3. PTH is a

A. Hyperglucemic hormone

B. hypoglycemic hormone

C. Hypocalcemic hormone

D. Hypercalcemic hormone

Answer: D



Watch Video Solution

4. Gull's disease occurs due to

A. hyperthyroidism

B. hypothyroidism

C. hyperparathyroidism

D. hypoparathyroidism

Answer: B



Watch Video Solution

5. Which of the following hormones is correctly matched with its deficiency disease ?

A. Relaxin-cretinism

B. Parathaormone-tetany

C. Insulin-diabetes insipidus

D. Prolactin-astigmatism

Answer: B



Watch Video Solution

6. Which of the following is a true nut?

A. Glucagon

B. growth hormone

C. Parathyroid hormone

D. Thyroxine

Answer: C



Watch Video Solution

7. Osteoporosis, osteomalacia, kidney stone

formation are due to

A. Hyperparathyroidism

B. Hyperthyroidism

C. Hyperinsulinemia

D. Hypothyroidism

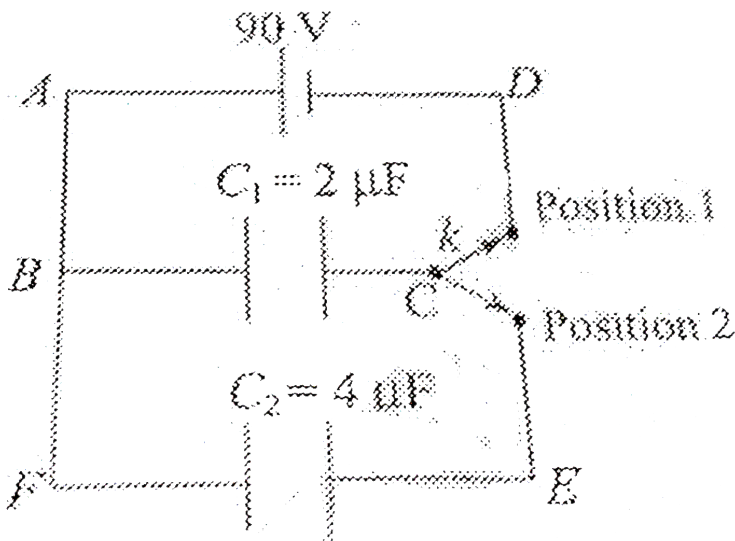
Answer: A



Watch Video Solution

8. Figure shows two capacitors of capacitance $2\mu F$ and $4\mu F$ and a cell of 90 V. The switch 'k' is such that when it is in position 1, the circuit ABCD is closed and when it is in position 2, the circuit BCEF is closed. The resistance of both the circuits is negligible so that the capacitor gets fully charged instantly. Initially the switch is in

position 1. then it is turned in position 2 and then in position 1. Now two cycles are completed. Find the charge (in μC) after two cycles.



A. Growth hormone

B. TSH

C. ACTH

D. None of these

Answer: A



Watch Video Solution

9. Due to hypersecretion of which hormone, bones become weak in female?

A. PTh

B. TSH

C. Progesterone

D. Estrogen

Answer: A



Watch Video Solution

10. Match the following and choose the correct combination.

List-1

List-2

- | | |
|------------------------|----------------------|
| A) Hypothyroidism | 1) Addison's disease |
| B) Hyperthyroidism | 2) Kidney stones |
| C) Hypoparathyroidism | 3) Graves's disease |
| D) Hyperparathyroidism | 4) Tetany |
| | 5) Myxoedema |

A. A-5,B-3,C-4,D-2

B. A-4,B-3,C-2,D-5

C. A-5,B-3,C-2,D-4

D. A-3,B-5,C-4,D-2

Answer: A



Watch Video Solution

Exercise I Thymus Gland

1. Thymus gland releases

A. T_4

B. T_3

C. Thymosins

D. TCT

Answer: C



Watch Video Solution

2. If thymectomy is done during adult hood then what possibility is their

A. Immunosuppressant

B. Die immediately

C. No adverse reaction

D. Myasthenia gravis

Answer: C



Watch Video Solution

3. Major roles of thymus gland in humans is/are

A. Differentiation of T-lymphocytes

B. Differentiation of B-lymphocytes

C. Promote production of antibodies

D. Both (1) and (3)

Answer: D



Watch Video Solution

4. Immune response of old age person becomes weak due to the degeneration of following gland

A. Thyroid

B. Parathyroid

C. thymus

D. hypothalamus

Answer: C



Watch Video Solution

5. This one plays an important role in immune system

A. Pineal gland

B. thyroid

C. parathyroid

D. Thymus gland

Answer: D



Watch Video Solution

6. Thymosin plays an important role in differentiation of

A. RBCs

B. T-lymphocytes

C. NK cells

D. Dendritic cells

Answer: B



Watch Video Solution

7. "Tyrosin" is important in the formation of

I. T_3 II. T_4 III. Oxytocin IV. PRL

I and II

II and III

IV and I

III and I

A. I and II

B. II and III

C. IV and I

D. III and I

Answer: A



Watch Video Solution

8. A child with a weak immune system .Which of the following gland could be the cause of the problem?

A. Thyroid gland

B. Parathyroid gland

C. Thymus

D. Pituitary gland

Answer: C



Watch Video Solution

9. Estrogen

- A. Stimulates the growth of ovarian follicle
- B. Stimulate the appearance of secondary sex characters
- C. Stimulate the growth of mammary gland
- D. All of the above

Answer: D



Watch Video Solution

10. Thymosin is responsible for

- A. Raising the blood sugar level
- B. Raising the blood calcium level
- C. Differentiation of T lymphocytes
- D. Decrease in blood RBC

Answer: C



Watch Video Solution

11. Blood calcium level is a resultant of how much dietary calcium is absorbed ,Hoe much calcium is lost in urine,how much bone dissoves releasing calcium into the blood and how much calcium from blood enters tissues.A number of facctors play an important role in these processes.Mask the one which has no role.

A. Vitamin D

B. Parathyroid hormone

C. Thyrocalcitonin

D. Thymosin

Answer: D



Watch Video Solution

Exercise I Adrenal Gland

1. During emergency piloerection ,sweating ,dilation of pupil are due to

thyroxine,insulin

insulin,glucagon

catecholamines

corticoids

A. thyroxine,insulin

B. insulin,glucagon

C. catecholamines

D. corticoids

Answer: C



Watch Video Solution

2. Adrenaline and noradrenaline do not promote

A. Breakdown of proteins

B. Breakdown of lipids

C. Glycogenesis

D. Glycogenolysis

Answer: C



Watch Video Solution

3. Main glucocorticoid is

A. Insulin

B. Glucagon

C. Cortisol

D. Aldosterone

Answer: C



Watch Video Solution

4. Aldosterone is the main

A. Sexual cortioid

B. glucocorticoid

C. mineralocorticoid

D. androgen

Answer: C



Watch Video Solution

5. Hormone that helps in maintenance of electrolytes, body fluid volume and osmotic pressure is

Cortisol

aldosterone

Oxytocin

thyroxin

A. Cortisol

B. aldosterone

C. Oxytocin

D. thyroxin

Answer: B



Watch Video Solution

6. A tumour in the adrenal zona glomerulosa can cause hyper secretion of hormones produced in that region. Which of the

following might you expect to find in a patient with such a tumour:

Increased blood sodium levels

Increased blood glucose levels

Decreased blood calcium levels

Increased dehydration

A. Increased blood sodium levels

B. Increased blood glucose levels

C. Decreased blood calcium levels

D. Increased dehydration

Answer: A



Watch Video Solution

7. Fight (or) Flight responses are due to

A. Release of adrenal medullary hormones
and low sympathetic tone

B. Release of corticoids and low sympathetic
tone

C. Release of adrenal medullary hormones
and high sympathetic tone

D. release of adrenal medullary hormones and high parasympathetic tone

Answer: C



Watch Video Solution

8. Autoimmune endocrine disorders are

A. Exophthalmos & simple goiter

B. Grave's disease & Addison's disease

C. Addison's syndrome & Cushing's syndrome

D. Graves disease & tetany

Answer: B



Watch Video Solution

9. Statement-I Adrenalin functions differently in different organs like heart and liver statement-II :Adrenalin receptors differ in different organs

A. Statement-I and statement-II both are correct

B. Statement-I is correct and statement -is
wrong

C. Statement-I is wrong and statement -II is
correct

D. Statement-I and statement -II Both are
wrong

Answer: B



Watch Video Solution

10. Statement-I: Hormonal action is characterized by amplification of output
statement-II: Hormones are bio-catalysis

A. Statement-I and statement-II both are correct

B. Statement -I is correct and statement -II is wrong

C. Statement-I is wrong and statement-II is correct

D. Both statement -I and statement -II and
wrong

Answer: B



Watch Video Solution

11. Insulin shock is due to

- A. Down-regulation of insulin-receptors
- B. Up-regulation of insulin receptors
- C. injuction of heavy dose of insulin

D. Low blood sugar level

Answer: C



Watch Video Solution

12. Addison's disease is due to the

A. Hyposecretion of T_3 and T_4 Hormones

B. Hyposecretion of glucocorticoids and mineralocorticoids

C. Hypersecretion of T_3 and T_4 hormones

D. Hypersecretion of glucocorticoids and mineralocorticoids

Answer: B



Watch Video Solution

13. Identify the wrong statement.

A. Hyposecretion of corticosteroids causes cushing's disease

- B. Hypersecretion of thyroxine in adults causes Grave's disease
- C. Hyposecretion of adrenal medullary hormones causes Addison's disease
- D. Simple goiter is an endemic disease

Answer: C



Watch Video Solution

14. Corticoids are the hormones, which are secreted by

A. Renal cortex

B. Adrenal cortex

C. Adrenal medulla

D. hypothalamus

Answer: B



Watch Video Solution

15. Glucocorticoids are the corticoids which

A. are involved in protein metabolism

B. are involved in fat metabolism

C. are involved in glucose metabolism

D. All of the above

Answer: D



Watch Video Solution

16. Addison's disease is due to

A. Hypersecretion of PTH and aldosterone

B. Hyposecretion of cortisol and aldosterone

C. Hypersecretion of PTH and
Hypersecretion of cortisol

D. Hypersecretion of cortisol and PTH

Answer: B



Watch Video Solution

17. Addison's disease is due to

A. hypertrophy of adrenal cortex

B. Hyperophy of thyroid

C. Atrophy of adrenal coretx

D. Atrophy of thyroid

Answer: C



Watch Video Solution

18. Adrenaline and noradrenaline are hormones that can act as

A. Energy producing agents

B. Neurotransmitter

C. Energy yielding agents

D. Biocatayst

Answer: B



Watch Video Solution

19. Hypersecretion of Cortisol by adrenal cortex causes

A. Cushing's syndrome

B. Turner's syndrome

C. Down's syndrome

D. Klinefelter syndrome

Answer: A



Watch Video Solution

20. Match the following and choose correct one

Column-I	Column-II
A) Addison's disease	1) Pituitary
B) Tetany	2) Thyroid
C) Acromegaly	3) Adrenal cortex
D) Myxoedema	4) Parathyroid

A. A-3,B-2,C-1,D-4

B. A-1,B-3,C-2,D-4

C. A-3,B-4,C-1,D-2

D. A-3,B-4,C-2,D-1

Answer: C



Watch Video Solution

21. Statement-I (S-I): hyposecretion of aldosterone results in low blood pressure.

Statement -II (S-II): hyposecretion of Aldosterone leads to elevated potassium (K^+), decreased sodium (Na^+) in the blood and dehydration

A. Statement-I and statement -II both are correct

B. Statement-I is wrong Statement -II is correct

C. Statement -I is correct and statement-is
wrong

D. Both statement-I and statement-II are
wrong

Answer: A



Watch Video Solution

22. Epinephrine is secreted from

A. Adrenal medulla and increases the heart rate

B. adrenal medulla and decreases the heart rate

C. adrenal cortex and increases the heart rate

D. adrenal cortex and decreases the heart rate

Answer: A



Watch Video Solution

23. Gluconeogenesis, Lipolysis and proteolysis process are stimulated by

- A. Glucocorticoids
- B. Mineralocorticoids
- C. Both (1) and (2)
- D. None of the above

Answer: A



Watch Video Solution

24. Match the following about endocrine disorder and choose the correct combination

Symptom	Disorder
A) Hypersecretion of cortisol	1) Flushed facial skin
B) Cushing's Syndrome	2) Skin with bronzed appearance
C) Myxoedema	3) Stretch marks on abdomen
D) Addison's disease	4) Pale skin
	5) Swelling of facial tissue

A. A-3,B-2,C-5,D-1

B. A-2,B-1,C-4,D-3

C. A-3,B-5,C-1,D-2

D. A-1,B-3,C-5,D-2

Answer: D



Watch Video Solution

25. Match the following and select the correct option

List-I

- I) Melatonin
- II) Adrenalin
- III) Cortisol
- IV) Oxytocin

List-II

- A) Fight-or-Flight response
- B) Milk ejection
- C) Sets Biological clock
- D) Anti inflammatory effect

A. IC,IIA,IIIB,IVD

B. IC,IIA,IIID,IVB

C. IB,IIA,IIID,IVC

D. I C,IID,IIIA,IV B

Answer: B



Watch Video Solution

26. Addison's disease results from

A. hypertrophy of gonad

B. hyperactivity of Leydig,s cells

C. hyposecretion of adrenal cortex

D. None of the above

Answer: C



Watch Video Solution

27. The steroid responsible for balance of water and electrolytes in our body is

A. insulin

B. melatonin

C. aldosterone

D. testosterone

Answer: C



Watch Video Solution

28. Which hormon cause dilation of blood vessels,increased oxygen consumption and gluco-genesis?

A. Glucogon

B. ACTH

C. Insulin

D. Adrenaline

Answer: D



Watch Video Solution

29. A steroid hormone which regulates glucose metabolism is

A. Cortisone

B. Cortisol

C. Corticosterone

D. 11-Deoxyxorticosterone

Answer: B



Watch Video Solution

30. Which one of the following does not act as a neurotransmitter ?

A. Acetylcholine

B. Epinephrine

C. Norepinephrine

D. Cortisone

Answer: D



Watch Video Solution

31. When blood levels of glucocorticoids raises then the secretion of

A. TSH decreases

B. Somatocrinin increases

C. FSH Increases

D. ACTH decreases

Answer: D



Watch Video Solution

32. Adrenaline directly affects

A. S.A node

B. α -cells of Langerhans

C. Dorsal root of spinal nerve

D. Epithelial cells of stomach

Answer: A



Watch Video Solution

33. Statement-I:Adrenal medulla is not essential for life

Statement-II :Nor epinephrine is also secreted by neurons of sympathetic division

A. Statement-I and statement-II both are correct

B. Statement-I is correct and statement-II is wrong

C. Statement -I is wrong and statement-II is correct

D. Both statement-I and statement-II are wrong

Answer: A



Watch Video Solution

34. Mary is about to face an interview. But during the first five minutes before the interview she experiences sweating, increased rate of heart beat, respiration etc. Which hormone is responsible for her restlessness

- A. Estrogen and Progesterone
- B. Oxytocin and vasopressin
- C. Adrenaline and noradrenaline
- D. Insulin and glucagon

Answer: C



[Watch Video Solution](#)

35. The steroid responsible for balance of water and electrolytes in our body is

- A. Insulin like growth factor (IGF)
- B. Melatonin
- C. Testosterone
- D. Aldosterone

Answer: D



[Watch Video Solution](#)

36. Cortisol is secreted from

A. Pancreas

B. Thyroid

C. Adrenal

D. Thymus

Answer: C



Watch Video Solution

Exercise I Pancreas

1. Hyperglycemia is due to

A. 1) Hypersecretion of glucocorticoids and
hyposcretion of insulin

B. 2) Hypersecretion of glucocorticoids and
hyposcretion of glucagon

C. 3) Hyposcretion of glucagon and
hypersecretion of Insulin

D. 4)Hypersecretion of glucocorticoids and
insulin

Answer: A



Watch Video Solution

2. Following are events taking place for blood
glucose regulation -

(i) increase in blood glucose

(ii) increase in circulating from glucagon

(iii) release of glucose from glycogen

(iv) decrease in blood glucose level

Select the option depicting the correct sequence of these events.

A. ,iii,ii,i

B. iii,i,ii

C. ,ii,iii,i

D. I,ii,iii

Answer: B



Watch Video Solution

3. Hypercalcemic hormone is

A. Cortisol

B. Adrenaline

C. Insulin

D. Glucagon

Answer: D



Watch Video Solution

4. Rapid movement of glucose into hepatocytes and adipocytes is due to

A. Cortisol

B. Adrenaline

C. Insulin

D. Glucagon

Answer: C



Watch Video Solution

5. Diabetes mellitus is characterized by

- A. Loss of appetite
- B. Loss of growth
- C. increase of glucose
- D. All of those

Answer: C



Watch Video Solution

6. Which one of the following pairs correctly matches a hormone with a disease resulting from its deficiency?

A. 1) Luteinizing hormone-Failure of ovulation

B. 2) Insulin-Diabetes insipidus

C. 3) Thyroxine-Tetany

D. 4) Parathyroid hormone-Diabetes mellitus

Answer: A



Watch Video Solution

7. Which one of the following pairs correctly matches a hormone with disease resulting from its deficiency?

- A. Relaxin-Gigantism
- B. Prolactin-Cretinism
- C. Parathyroid hormone-Tetany
- D. Insulin-Diabetes insipidus

Answer: C



Watch Video Solution

8. Find the odd one out

A. Parathyroid-Tetany

B. Pancreas-Diabetes insipidus

C. Adrenal cortex-cushing's syndrome

D. thyroid -goitre

Answer: B



Watch Video Solution

9. Enterogastrone is :

- A. A hormone secreted by gastric mucosa
- B. Enzyme secreted by gastric mucosa
- C. A hormone secreted by duodenal mucosa
- D. Secreted by exocrine gland related to digestions

Answer: C



Watch Video Solution

10. How insulin lowers blood sugar ?

- A. By increasing myoglobin formation
- B. By increasing blood pressure
- C. By enhancing liver glycogen formation
- D. All of these

Answer: C



Watch Video Solution

11. Fill up the blanks A to D with correct combination of term. Insulin is a-A-Hormone, which plays a major role in the

regulation of -B-homeostasis major acts mainly
on -C- and -D-

A. A -protein,B-glucose,C-hepatocytes,D-
adipocytes

B. A-peptide,B-lipd,C-hepatococytes,D-
myocytes

C. A-protein,B-glucose,C-osteocytes,D-
adipocytes

D. A-peptide,B-glucose,C-hepatocytes,D-
adipocytes

Answer: A



Watch Video Solution

12. Statement-I: Pancreas is a mixed gland

statement-II ,pancreatic enzymes help in digestion

A. 1) Statement-I and statement -II both are correct

B. 2) Statement-I is correct and statement-II is wrong

C. 3) Statement-I is wrong and statement -II is correct

D. 4) Both statement-I and statement-II are wrong

Answer: A



Watch Video Solution

13. A patient of diabetes mellitus excretes glucose in urine even when he is kept on a carbohydrate free diet. It is because

A. Fats are catabolised to from glucose

B. Amino acides are catabolised in liver

C. Amino acids are discharged into blood
stream fro liver

D. Glycogen from muscles are released into
the blood stream

Answer: A



Watch Video Solution

14.)llow metabolic rate

II)Increase in body weight

III)Tendency to retain water in tissue

Which of the following disease shows the above given symptoms?

A. Gigantism

B. Cretenism

C. Myxoedema

D. Acromegaly

Answer: C



[Watch Video Solution](#)

15. Islets of Langerhans in a normal human pancreas comprise only

- A. 2-3% of pancreatic tissue
- B. 1-2% of pancreatic tissue
- C. 2-4% of pancreatic tissue
- D. 4-5 % of pancreatic tissue

Answer: B



[Watch Video Solution](#)

16. Glucagon is

- A. Protein hormone
- B. Increases the blood sugar
- C. Hyperglycemic hormone
- D. All of the above

Answer: D



Watch Video Solution

17. Insulin is

A. Protein hormone

B. Decreases the blood sugar

C. act on adipose tissue and hepatocytes

D. All of the above

Answer: D



Watch Video Solution

18. Match correctly

A. 1)Thyroxine-tetanus

B. 2)insulin-diabetes insipidus

C. 3)adrenaline-hepatitis

D. 4)MSH-metachrosis

Answer: D



Watch Video Solution

19. Statement-I:pancreas is considered a dual (mixed) gland.

Statement-II :Pancreas produces enzymes and hormones.

- A. 1)Both S-I and S-II are correct
- B. 2)S-I is incorrect S-II is correct
- C. 3)Both S-I and S-II are incorrect
- D. 4)S-I is correct S-II is correct

Answer: A



Watch Video Solution

20. Loss of glucose in the urine occurs only when the blood glucose concentration is above

A. 180 mg/100 ml

B. 100mg/100 ml

C. 80 mg/100ml

D. 30 mg/100 ml

Answer: A



Watch Video Solution

21. Diabetes mellitus causes

A. Hypocalcaemia

B. Hypocalcaemia

C. Hypoglycemia

D. Hyperglycaemia

Answer: D



Watch Video Solution

22. How many Islets of Langerhans are present in normal human pancreas?

A. 1 to 2 million

B. 2 to 3 million

C. 3 to 4 million

D. 4 to 5 million

Answer: A



Watch Video Solution

23. Hypoglycemia is associated with

- A. Hyperinsulinism
- B. hypothyroidism
- C. Cushing's disease
- D. Diabetes insipidus

Answer: A



Watch Video Solution

1. Development of epididymis, vas deferens, seminal vesicles, prostate glands and urethra is controlled by

A. estrogen

B. Progesterone

C. androgen

D. Pituitary hormone

Answer: C



Watch Video Solution

2. Not a function with androgen influence is

A. Libido

B. Catabolism of proteins

C. Spermatogenesis

D. Anabolism of proteins

Answer: B



Watch Video Solution

3. Androgens regulates

A. Development of accessory sex organs

B. Muscular growth

C. Maturation of accessory sex organs

D. All of the above

Answer: D



Watch Video Solution

4. Statement-I: Androgens are secreted only in males

Statement-II :Progesterone is secreted only in females

A. Statement-I and statement -II both are correct

B. Statement-I is correct and statement is wrong

C. Statement -I is wrong and statement-II is correct

D. Statement-I and statement -II Both are wrong

Answer: C



Watch Video Solution

5. The Leydig cells secrete

- A. Intermedian
- B. Inhibin
- C. Testosterone
- D. Fertilizin

Answer: C



6. Choose the correct option among the following

Column-A	Column-B
A) Epinephrine	I) Stimulates in muscle growth
B) Testosterone	II) Decrease in blood pressure
C) Glucagon	III) Decrease in liver glycogen content
D) Atrial natriuretic factor	IV) Increase heart beat

A. A-II, B-I, C-II, D-IV

B. A-IV, B-I, C-III, D-II

C. A-I, B-II, C-III, D-IV

D. S-I,B-IV,C-II,D-III

Answer: B



Watch Video Solution

Exercise I Ovary

1. Match the following and choose correct one.

Column-I

- A) Testis
- B) Ovaries
- C) Pineal body
- D) Melanin

Column-II

- 1) Pigmentation
- 2) Circadian rhythm
- 3) Estrogen
- 4) Testosterone

A. A-2,B-4,C-3,D-1

B. A-1,B-3,C-2,D-4

C. A-4,B-3,C-2,D-1

D. A-2,B-3,C-1,D-4

Answer: C



Watch Video Solution

2. Leydig cells produce a group of hormones called

A. Androgens

B. Estrogens

C. aldosterone

D. Gondotropins

Answer: A



Watch Video Solution

3. The progesterone is a hormone which is

A. a protein useful for morphogenesis

B. helpful in relaxing uterus during parturition

C. an enzyme helpful for growth

D. Responsible for growth and maintenance of deciduas

Answer: D



Watch Video Solution

4. The female hormone inhibin is secreted by

A. 1)Zona pellucida

B. 2)Ovary

C. 3)Corpus luteum

D. 4)Uterine epithelium

Answer: C



Watch Video Solution

5. Progesterone is secreted by the cells of

A. Corpus luteum

B. Corpus callosum

C. Corpus albicans

D. Macula lutea

Answer: A



Watch Video Solution

6. Fill up the blanks A to C with correct combination of terms, Estrogens produce wide ranging actions such as stimulation of growth and activities of -A- secondary sex

organs,development of growing -B-,appearance of female secondary sex characters (e.g., high pitch of voice ,etc),-C- gland development.

A. A-female,B-ovarian follicles,C-mammary

B. A-male,B-ovarian follicles,C-mammary

C. A-female,B-thyroid follicles,C-mammary

D. A-female ,B-ovarian follicles,C-uterine

Answer: A



Watch Video Solution

7. Which one of the following is anti abortion hormone?

A. Relaxin

B. Progesterone

C. Estrogen

D. epinephrine

Answer: B



Watch Video Solution

8. Progesterone

A. Supports the pregnancy

B. Acts on the mammary gland and stimulate the formation of alveoli

C. Both (1) and (2)

D. Controls secondary sexual characters in females

Answer: C



Watch Video Solution

9. Select the right match of endocrine gland and their hormones among the options given below

- | | |
|--------------------|-------------------------|
| A. Pineal | (i) Epinephrine |
| B. Thyroid | (ii) Melatonin |
| C. Ovary | (iii) Estrogen |
| D. Adrenal medulla | (iv) Tetraiodothyronine |

A. A-iv,B-ii,C-iii,D-i

B. A-ii,B-iv,C-I,D-iii

C. A-iv,B-ii,C-I,D-iii

D. A-ii,B-iv,C-iii,D-i

Answer: D



Watch Video Solution

Exercise I Hormones Produced By Other Organs

1. Gastrointestinal hormone are

- A. Steroidal in nature
- B. Proteinaceous in nature
- C. Glycoproteinaceous in nature
- D. Both (1) and (2)

Answer: B



Watch Video Solution

2. Corpus luteum secretes a hormone called

- A. Prolactin
- B. Progesterone
- C. Aldosterone
- D. testosterone

Answer: B



Watch Video Solution

3. Which of the following organs in mammals does not consist of central "medullary" region surrounded by a cortical region

A. Ovary

B. Adrenal

C. Liver

D. Kidney

Answer: C



Watch Video Solution

4. GIP (Gastric inhibitory peptide)

A. Inhibits the gastric secretion and motility

B. Inhibits the gastric secretion only

C. Activates the gastric secretion and motility

D. Activates the gastric secretion only

Answer: A



Watch Video Solution

5. ANF has exactly opposite function of which of hormone secreted .

A. PTH

B. Estrogen

C. aldosterone

D. androgen

Answer: C



6. JG cells kidney produces

A. Rennin

B. Renin

C. erythropoitin

D. Both (2) and (3)

Answer: D



Watch Video Solution

7. Match the following and choose correct one.

Column-I	Column-II
A) Testosterone	1) Increase in muscle growth
B) Atrial natriuretic factor	2) Decrease in blood pressure
C) Glucagon	3) Decrease in liver glycogen content
D) Epinephrine	4) Increase in heart beat

A. A-1,B-2,C-3,D-4

B. A-1,B-3,C-2,D-4

C. A-3,B-4,C-1,D-2

D. A-3,B-4,C-2,D-1

Answer: A



Watch Video Solution

8. Statement-I :Erythropoietin is produced from the JG cells of kidney in response to high blood volume

Statement II:Erythropoietin stimulates erythroclasia.

A. 1)Both statement I & statement II are wrong

B. 2)Statement I is true & statement II is wrong

C. 3) Both statement I & statement II are correct

D. 4) Statement I is wrong & statement II is correct

Answer: A



Watch Video Solution

9. ANF, is secreted by

A. Venous wall of heart

B. atrial wall of heart

C. Both (1) and (2)

D. None of these

Answer: B



Watch Video Solution

10. ANF' is

A. Steroidal in nature

B. Peptide hormone

C. Glucocorticoid hormone

D. Mineralocorticoid hormone

Answer: B



Watch Video Solution

11. ANF' is a hormone ,Which

A. is secreted when BP is increased

B. decreases BP

C. Causes vasodilation

D. All of above

Answer: D



Watch Video Solution

12. Erythropoietin

A. Stimulates erythropoiesis

B. Inhibits erythropoiesis

C. Inhibits platelets formation

D. Stimulates platelets formation

Answer: A



Watch Video Solution

13. CCK acts on

A. 1)Pancreas

B. 2)gall bladder

C. 3)Both (1) and (2)

D. 4)Liver

Answer: C

14. The given table enlists various hormones and their chemical nature. Select the option which completes the table.

Hormone		Chemical composition	
(i)		Protein	
Testosterone		(ii)	
Thyroxine		(iii)	
(iv)		Amino-acid derivative	
(i)	(ii)	(iii)	(iv)
1) Cortisol	Steroid	Polypeptide	Estradiol
2) Insulin	Protein	Polypeptide	Epinephrine
3) Cortisol	Protein	Iodothyronine	Estradiol
4) Insulin	Steroid	Iodothyronine	Epinephrine

15. The same hormone can be known by various names given in which set

A. 1)secretin ,enterokinin,gastrin

B. 2)Gametokinetic factor ,testosterone,LTH

C. 3)ADH,Pitressin,and vasopressin

D. 4)Oxytocin ,tri-iodo=thyronine,thyroxine

Answer: C



Watch Video Solution

16. Atrial natriuretic peptide is produced by

A. lungs

B. heart

C. Kidney

D. JG cells

Answer: B



Watch Video Solution

17. Secretin acts on the

A. liver

B. stomach

C. pancreas

D. small intestine

Answer: C



Watch Video Solution

18. Which of the following hormones is not secreted by human placenta?

A. Prolactin

B. Estrogen

C. Progesterone

D. Human chorionic gonadotropin

Answer: A



Watch Video Solution

Exercise I Mechanism Of Hormonal Action

1. Which one of the following is not a second messenger in hormone action ?

A. cAMP

B. vGMP

C. Calcium

D. Sodium

Answer: D



Watch Video Solution

2. Hormone receptors on the target tissue are made up of

A. lipids

B. carbohydrates

C. Proteins

D. All of these

Answer: C



Watch Video Solution

3. Steroid hormones typically alters the activity of target cells by

A. activating primary messenger

B. activating secondary messenger

C. interacting with intracellular receptors

D. selectively affecting transcription from a battery of genes

Answer: C



Watch Video Solution

4. Lipid soluble hormone works by interacting with

- A. Intracellular receptors
- B. Intercellular receptors
- C. Enzymes
- D. producing enzymes

Answer: A



Watch Video Solution

5. Statement-I Boy/girl who is blind by birth attains sexual maturity early

Statement-II: Darkness stimulate the release of melatonin

A. Statement-I and statement-II both are correct

B. Statement-I is correct and statement -is wrong

C. Statement-I is wrong and statement-II is correct

D. Both statement -I and statement-II are
wrong

Answer: A



Watch Video Solution

6. Some hormones need the secondary messenger because

A. they need activator

B. They can't cross cell membrane

C. They can cross cell membrane

D. They need a prosthetic group

Answer: B



Watch Video Solution

7. Which one of the following is not a second messenger in hormone action ?

A. Calcium

B. Sodium

C. cAMP

D. IP_3

Answer: B



Watch Video Solution

8. Estrogen and testosterone hormones bind to

A. cytoplasmic receptors

B. G-protein membrane proteins

C. Enzyme linked proteins

D. membrane receptors

Answer: A



Watch Video Solution

9. Steroid hormones work as

A. They enter into target cells and binds with specific receptor and activate specific genes to form protein

B. they bind to cell membrane

C. they catalyse formation of AMP

D. None of the above

Answer: A



Watch Video Solution

10. Insulin receptors are

A. extrinsic protein

B. interinsic protein

C. G-protein

D. trimetic protein

Answer: A



Watch Video Solution

11. According to the accepted concept of hormone action, if receptor molecules are removed from target organs, then the target organ will

A. Not respond to the hormone

B. Continue to respond to the hormone without any difference

C. Continue to respond to the hormone but in the opposite way

D. Continue to respond to the hormone but will require higher concentration

Answer: A



Watch Video Solution

12. Hormone that is having receptor on the surface of cell membrane is

A. estrogen

B. iodothyronines

C. FSH

D. testosterone

Answer: C



Watch Video Solution

13. Hormone that maintains the blood glucose level within the limit is

A. Thyroxine

B. Insulin

C. Testosterone

D. Epinephrine

Answer: A



Watch Video Solution

14. Secretion of aldosterone is under the control of

A. Hypothalamic portal system

B. Hypothalamo-hypophyseal tract

C. RAAS pathway

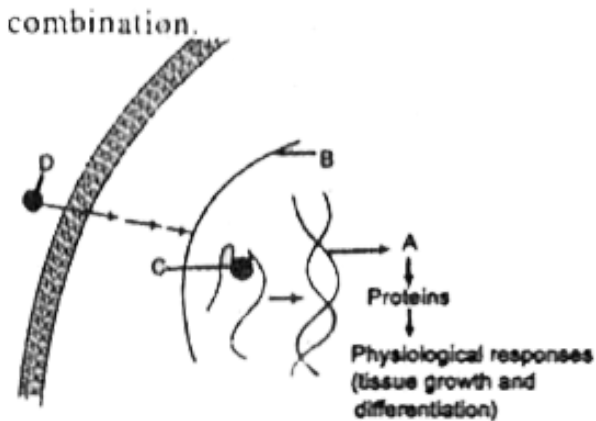
D. Adrenal cortex

Answer: C



Watch Video Solution

15. Identify A to D and choose the correct combination



Chemical Coordination and Integration

A. A-DNA, B-Nucleus, C-Hormone receptor

complex, D-Hormone

B. A-mRNA, B-Nucleus, C-Hormone receptor

complex, D-Hormone

C. A-mRNA ,B-Nucleus ,C-Hormone receptor complex,D-Protein

D. A-DNA,B-Nucleus,C-Hormone receptor complex ,D-protein

Answer: B



Watch Video Solution

16. In the mechanism of action of a protein hormone ,one of the second messengers is

A. cyclic AMP

B. Insulin

C. T_3

D. Gastrin

Answer: A



Watch Video Solution

17. Hormones are called chemical signals that stimulate specific target tissues. Which is the

corret location of these receptors in case of protein hormones?

A. Extra cellular matrix

B. Blood

C. Plasma membrane

D. Nucleus

Answer: C



Watch Video Solution

1. Which one of the following hormones is a modified amino acid ?

A. Prostaglandin

B. Progesterone

C. Epinephrine

D. Estrogen

Answer: C



Watch Video Solution

2. Father of endocrinology is

A. Huxley

B. Thomas Addison

C. Abel

D. Kimball and Murlin

Answer: B



Watch Video Solution

3. Heterocrine glands are the glands .which

A. Work as exocrine glands

B. Work as endocrine glands

C. Have dual (exo and endocrine) mode of
function

D. are present in the hypothalamus region
of brain

Answer: C



Watch Video Solution

4. Read the following statements

I) All hormone receptors are proteins

II) All hormones are protein hormones

III) The hormone function is generally close to the site its release

The incorrect statements are

A. All except I

B. All except II

C. All except III

D. I, II and III

Answer: A



Watch Video Solution

5. Local hormone of the following is

A. Somatostatin

B. ACTH

C. Thyrocalcitonin

D. Thyroxine

Answer: A



Watch Video Solution

Exercise II Human Endocrine System

1. Which of the following can be true regarding epinephrine

A) Protein hormone B) Catecholamine

C) Lipid soluble D) Water soluble

E) Bind to intracellular hormone receptor

F) Steroid hormone

G) Amine hormone

A. A,B,E,G

B. B,D,E,G

C. B,C,E,G

D. B,D,G

Answer: D



Watch Video Solution

2. If suddenly the gravitational force of attraction between the earth and a satellite

revolving around it becomes zero, then the satellite will :

- A. Rathke's pouch
- B. Outgrowth of oral region
- C. Intundibular process
- D. Hypophyseal portal system

Answer: C



Watch Video Solution

3. Match the following columns

List-I

- A) V-shaped chromosome
- B) L-shaped chromosome
- C) J-shaped chromosome
- D) I-shaped chromosome

List-II

- I) telocentric
- II) metacentric
- III) sub-metacentric
- IV) acrocentric

A. A & B

B. B & D

C. C & D

D. E & F

Answer: B



Watch Video Solution

4. Suprachiasmatic nucleus is influenced by

A. increased light intensity

B. decreased light intensity

C. Both of the above

D. None of the Above

Answer: D



5. Estradiol is a

Glucocorticoid

Mineralo corticoid

Gonadotropin

Oestrogen

A. Glucocorticoid

B. Mineralo corticoid

C. Gonadotropin

D. Oestrogen

Answer: D



Watch Video Solution

6. Read the following hormone

A)Epinephrine B)Thyroid hormone

C)Nor-epinephrine D)Melatonin

Identify the hormones that considered as catecholamines

A. A and B

B. A and C

C. B and C

D. C and D

Answer: B



Watch Video Solution

7. Study the following and choose the correct statements

I)Hormones produced by adenoypohysis are protein hormones

II)Hormones stores by neurohypophysis are

peptide hormones

III) Catecholamines are water soluble hormones

IV) Thyroid hormone is derived from amino acid
the tyrosine

A. A) I and II

B. B) I, II and III and IV

C. C) II, III and IV

D. D) III and IV

Answer: B



Watch Video Solution

8. Identify the mismatched combination from the following

A. 1) Peptide hormone-vasopressin

B. 2) Protein hormone-Insulin

C. 3) Amine hormone-Melatonin

D. 4) Oestrogen-Protein hormone

Answer: D



Watch Video Solution

9. Which one of the following is termed temporary gland?

A. Pineal

B. Thymus

C. Placenta

D. Kidney

Answer: C



Watch Video Solution

Exercise II Hypothalamus

1. Function of hypothalamus

- A. Thermoregulation
- B. Water balance
- C. Control of hormone function
- D. All the above

Answer: B



Watch Video Solution

2. Hypothalamus secrete

- A. Peptide hormone only
- B. Amine hormones only
- C. Inhibiting and releasing hormones
- D. Gonadotropins

Answer: C



Watch Video Solution

1. Prolactin controlling agent is

A. Ach

B. Dopamine

C. GABA

D. Prostaglandins

Answer: B



Watch Video Solution

2. A 10 yr child with deficient anterior pituitary function is likely to

A. Develop acromegaly

B. be a short stature but have relatively normal body

C. be a constant danger of becoming dehydrated

D. Have a high basal metabolic rate

Answer: B





3. The posterior pituitary is under the

A. 1)direct neural regulation of the
adenohypophysis

B. 2)direct neural regulation of the
hypothalamus

C. 3)direct axonal regulation of the
adenohypophysis

D. 4)direct axonal regulation of the neurohypophysis

Answer: B



Watch Video Solution

4. In fish culture which pair of hormones is most important?

A. TSH and ACTH

B. FSH and LH

C. Estrogen and progesterone

D. Vasopressin and oxytocin

Answer: B



Watch Video Solution

5. If the pituitary gland of an adult rat is surgically removed , which of the following endocrine glands will be the least affected ?

A. Adrenal cortex

B. Adrenal medulla

C. Thyroid

D. Gonad

Answer: B



Watch Video Solution

6. Congenital hypothyroidism results in

A. Myxoedema

B. Exophthalmos

C. Dwarfism

D. Cretinism

Answer: D



Watch Video Solution

7. Hyposecretion of ADH causes

A. Type 1 diabetes mellitus

B. Diabetes insipidus

C. Type II diabetes mellitus

D. Hyperinsulinism

Answer: B



Watch Video Solution

8. Diabetes insipidus occurs due to the hyposecretion of

A. Thymosine

B. Oxytocine

C. Insulin

D. Vasopressin

Answer: D



Watch Video Solution

9. Secretion of which of the following is under neurosecretory nerve axons?

A. Pineal

B. Adrenal cortex

C. Anterior pituitary

D. posterior pituitary

Answer: D



Watch Video Solution

10. GnRH (Gonadotropin Releasing Hormone)
Stimulates the

A. Pancreas to release the gonadotropin

B. Pituitary for synthesis and release of
gonadotropin

C. Testis to release the gonadotropin

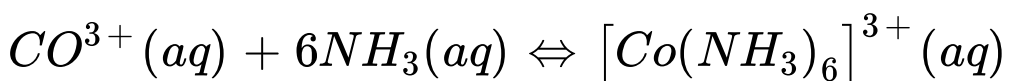
D. hypothalamus to release the
gonadotropin

Answer: B



Watch Video Solution

11. The equilibrium constant at $25^{\circ}C$ for the process:



is 2×10^7 . Calculate the value of ΔG^{\ominus} at $25^{\circ}C$

.

$$[R = 8.314JK^{-1}mol^{-1}]$$

In which direction is the reaction spontaneous when reactants and products are under standard conditions?

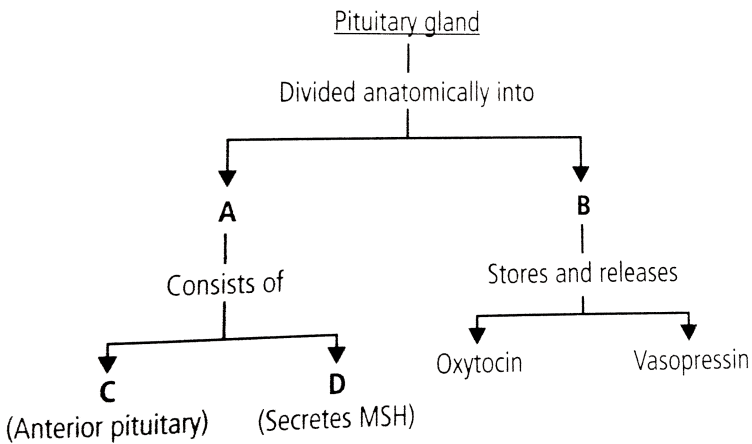
- A. Adrenal cortex
- B. Anterior pituitary
- C. Posterior pituitary
- D. Pineal body

Answer: C



Watch Video Solution

12. Identify A,B,C and D in the given flow chart and select the correct option.



A. A-neurohypophysis,B-Adenohypophysis,C-
pars distalis,D-pars intermedia

B. A-Adenohypophysis,B-Neurohypophysis,C-

Pars intermedia,D-Pars distalis

C. A-Adenohypophysis ,B-

Neurohypophysis,D-Pars distalis ,Pars

intermedia

D. A-Neurohypophysis,B-Adenohypophysis,C-

Pars intermedia,D-Pars distalis

Answer: C



Watch Video Solution

Exercise II Pineal Gland

1. Which one is derived from the amino acid tryptophan

A. Melanin

B. Melatonin

C. Insulin

D. Thyroxine

Answer: B



Watch Video Solution

2. Darkness stimulates the release of the following hormone

A. A water soluble causing ageing in adults

B. A hormone that maintains menstrual cycle

C. A hormone that prevents diuresis

D. A hormone that stimulates uterine muscle contractions

Answer: B



[Watch Video Solution](#)

3. Which of the following is responsible for sleep cycle movement ?

A. Dopamine

B. Melatonin

C. Serotonin

D. Adrenalin

Answer: B



[Watch Video Solution](#)

4. Darkness stimulates the release of the following hormone

A. A water soluble causing ageing in adults

B. A hormone that maintains menstrual cycle

C. A hormone that prevents diuresis

D. A hormone that stimulates uterine muscle contractions

Answer: B



Watch Video Solution

Exercise II Thyroid Gland

1. A patient has swelling around eyes and large as well as popping eye balls. This patient is probably suffering from

A. excessive secretion of thyroxine

B. excessive secretion of calcitonin

C. less secretion of thyroxine

D. less secretion of calcitonin

Answer: A



Watch Video Solution

2. Toxic agents present in food which interfere with thyroxine synthesis lead to the development of

A. 1) toxic goitre

B. 2)cretinism

C. 3)simple goitre

D. 4)thyrotoxicosis

Answer: C



Watch Video Solution

3. Read the following statements

I)Congenital hypothyroidism results in cretinism

II)Myxoedema is characterised by accumula-tion

of interstitial fluid below the skin

III) Eyes protrude in the patient suffering from Grave's disease

The correct statements are

- A. I and II only
- B. II and III only
- C. I, II and III
- D. I and III only

Answer: A



Watch Video Solution

4. The hormone which inhibits bone resorption is/are

A. 1) Calcitonin

B. 2) Calcitriol

C. 3) Parathromone

D. 4) (1) and (2)

Answer: A



Watch Video Solution

5. Identify the incorrect matching

- | | | |
|----|-----------------|----------------|
| A. | Endocrine gland | Hormone |
| | Pars distalis | Growth Hormone |
| B. | Endocrine gland | Hormone |
| | Parsintermedia | Oxytocin |
| C. | Endocrine gland | Hormone |
| | Pars nervosa | Vasopressin |
| D. | Endocrine gland | Hormone |
| | Thyroid | T_(3),T_(4) |

Answer: B



Watch Video Solution

6. Facial tissues swell and look puffy in case of

A. Grestinism

B. Graves's disease

C. Anaphylaxis

D. Endemic goiter

Answer: C



Watch Video Solution

7. The vitamin which works along with para thyroid hormone is

A. Vitamine C

B. Calciferol

C. Tocopherol

D. Vitamin- B_{12}

Answer: B



Watch Video Solution

8. One of the following is correct statement

A. $1)T_4$ is more active than T_3

B. 2) T_3 is more active than T_4

C. 3) T_3 and T_4 are the same

D. 4)None of the above

Answer: B



Watch Video Solution

9. Match the following and choose the correct one

Structure	Related feature
A) Epiphysis cerebri	1) Maintain proper levels of Ca^{2+} and phosphates
B) Follicular cells of thyroid	2) Regulates pigmentation
C) Pars intermedia	3) Circadian rhythms
D) Parafollicular cells of thyroid	4) Influences menstrual cycle
	5) Basal metabolic rate

A. A-2,B-5,C-4,D-1

B. A-3,B-5,C-2,D-1

C. A-4,B-1,C-2,D-1

D. A-3,B-1,C-2,D-5

Answer: B



Watch Video Solution

Exercise II Parathyroid Gland

1. Hormone that stimulates the process of bone resorption is

- A. Parathyroid hormone
- B. Calorigenic hormone
- C. Thyroxine
- D. Catecholamines

Answer: A



Watch Video Solution

2. Parathormone

- A. Stimulate Vitamin A in liver
- B. Stimulate Vitamin B_{12} in liver
- C. Stimulate Vitamin D in Kidney
- D. Stimulate Vitamin K in Kidney

Answer: C



Watch Video Solution

3. Increase in bleeding time and delay in blood coagulation is due to the deficiency of which hormone?

- A. Adrenaline
- B. Noradrenaline
- C. Parathormone
- D. thyroxine

Answer: C



Watch Video Solution

Exercise II Thymus

1. Maturation of T-Cells promoted by the hormone

A. Estradiole

B. Melatonin

C. Thymosin

D. Thyroxine

Answer: C



Watch Video Solution

2. Which gland atrophies in adults?

A. Pancreas gland

B. Thymus gland

C. Adrenal gland

D. Thyroid gland

Answer: B



Watch Video Solution

3. Development of breast tissue in males called

- A. Eunuchoidism
- B. Precocious puberty
- C. Hypogonadism
- D. Gynecomastia

Answer: D



Watch Video Solution

4. When both ovaries are removed from a rat which hormone is decreased in blood?

A. Oxytocin

B. Prolactin

C. Estrogen

D. Gonadotropin releasing factor

Answer: C



Watch Video Solution

Exercise II Adrenal Gland

1. Cortisol is involved in

- A. Controlling blood sugar levels
- B. Controlling blood pressure
- C. Reducing inflammation
- D. All of the above

Answer: D



Watch Video Solution

2. Spindly arms and legs, pot belly, moon face, buffalo hump are some manifestations of

A. Cushing's syndrome

B. Addison's disease

C. Parkinson's disease

D. Graves disease

Answer: A



Watch Video Solution

3. Which gland is called 4S and 3F?

- A. 1)Thyroid gland
- B. 2)Parathyroid gland
- C. 3)Adrenal gland
- D. 4)Hypothalamus

Answer: C



Watch Video Solution

4. Addison's disease results from

- A. Hyposecretion of adrenal
- B. Hypertrophy of gonads
- C. Hyperactivity of cells of Leydig
- D. None of these

Answer: A



Watch Video Solution

5. The heartbeat increase at the time of interview due to

- A. Secretion of adrenaline
- B. Corticotropic hormone
- C. Hypersecretion of renin
- D. Antidiuretic hormone secretion

Answer: A



Watch Video Solution

6. Conn's disease is caused by the over secretion of

A. 1)Aldosterone

B. 2)ADH

C. 3)ACTH

D. 4)None of these

Answer: A



Watch Video Solution

7. Life saving hormone are secreted by

A. Pituitary

B. Pineal

C. Adrenal

D. Thyroid

Answer: C



Watch Video Solution

8. The following are the hormones secreted by suprarenal glands

A)Cortisol

B)Catecholamines

C)Aldosterone

D)Androgens

Arrange them in a correct sequence as secrete by the concerned zones of the glands from outside to inside

A. 1)C-S-A-B

B. 2)C-A-D-B

C. 3)A-D-C-B

D. 4)A-C-D-B

Answer: B



Watch Video Solution

9. The hormone which regulates homeostasis of minerals is secreted by

- A. Zona reticularis of adrenal cortex
- B. Zone glomerulosa of adrenal cortex
- C. Zona fasciculata of adrenal cortex
- D. Adrenal medulla

Answer: B



Watch Video Solution

Exercise II Pancreas

1. Presence of ketone bodies in urine is called-----

- A. Diabetes mellitus
- B. Diabetes insipidus
- C. Myxoedema
- D. Endemic goiter

Answer: A



Watch Video Solution

2. Assertion: Insulin stimulates glycogenolysis and gluconeogenesis and gluconeogenesis resulting in hyperglycemia.

Reason: Prolonged hyperglycemia leads to complex disorder called diabetes insipidus.

- A. Diabetes insipidus
- B. Diabetes mellitus
- C. Increase in ketone bodies
- D. Both (2) and (3)

Answer: D



Watch Video Solution

Exercise II Testis

1. In males, the spermatogenesis is regulated by

A. FSH

B. androgens

C. Both (1) and (2)

D. Hypothalamus

Answer: C



Watch Video Solution

2. Compared to a bull a bullock is docile because of

- A. Higher level of thyroxin
- B. Higher levels of cortisone
- C. Lower levels of blood testosterone
- D. Lower levels of adrenalin/noradrenalin in its blood

Answer: C



Watch Video Solution

Exercise II Ovary

1. Match the following

- | | |
|-----------------------------------|--------------------------------|
| a) Estrogen | 1) Maintains corpus luteum |
| b) Progesterone | 2) Spermatogenesis |
| c) Follicular stimulating hormone | 3) Supports pregnancy |
| d) Luteinizing hormone | 4) Growth of ovarian follicles |

A. a-4,b-2,c-3,d-1

B. a-1,b-2,c-3,d-4

C. a-4,b-3,c-2,d-1

D. a-2,b-1,c-4,d-3

Answer: C



Watch Video Solution

2. Read the following activities

A)Oogenesis B)Ovulation

C)Milk secretion D) Milk ejection

A. A-B-C-D

B. B-A-C-D

C. A-B-D-C

D. B-A-D-C

Answer: B



Watch Video Solution

Exercise II Other Endocrine Structures

1. Hormones stimulate production of erythrocytes are

A. Aldosterone, Calcitonin, Cortisol

B. Erythropoietin, Thyrocalcitonin, Growth
Hormone

C. Cortisol, Thyroxine, Erythropoietin

D. Thyroxine, Epinephrine, Erythropoietin

Answer: C



Watch Video Solution

2. Bombycol, a pheromone secreted by

A. cat

B. muskdeer

C. Silkmoth

D. Honey bee

Answer: C



Watch Video Solution

3. Geraniol ,an aggregation pheromone is produced by

A. Honeybee

B. Silkworm

C. Muskdeer

D. Cat

Answer: A



Watch Video Solution

4. Match the following

List-I	List-II
A) Cholecystokinin	1) Stimulates secretion of gastric juice
B) Enterogastrone	2) Stimulates bicarbonate secretion by pan-creas
C) Gastrin	3) Contraction of gall bladder
D) Secretin	4) Inhibits secretion of gastric juice

A. A-3,B-1,C-4,D-2

B. A-1,B-4,C-3,D-2

C. A-4,B-1,C-3,D-2

D. A-3,B-4,C-1,D-2

Answer: B



Watch Video Solution

5. Which of the following help in communication with the other members of the same species

A. Hormones

B. Automones

C. Pheromones

D. Autocoids

Answer: C



Watch Video Solution

6. Which of the following is not an example of sex pheromone

A. Bombicol

B. Muskone

C. Formic acid

D. Civetone

Answer: C



Watch Video Solution

7. Presence of fats and chyme in the food causes duodenum to produce this polypeptide hormone

A. secretin

B. Gastric inhibitory peptide

C. Gastrin

D. Cholecystokinin

Answer: D



Watch Video Solution

Exercise II Mechanism Of Hormonal Action

1. Which is not involved as second messenger in Ca^{2+} mediated hormone ?

A. cAMP

B. DAG

C. Phospholipase

D. IP_3

Answer: A



Watch Video Solution

2. Read the following arrange them in a correct sequence in the activity of Epinephrine on the liver cells

A) Formation of cAMP

B) Epinephrine binds to membrane receptor

C) Activation of phosphorylase

D) G protein binds to GTP and activates

adenylate cyclase

E) Activation of protein kinase A

F) Phosphorylation of glycogen to glucose-6-phosphate

A. BADECF

B. BDAECF

C. BADFCE

D. BDAFCE

Answer: B



Watch Video Solution

3. Second messengers are activated in response to

- A. Steroid hormones
- B. thyroxine
- C. hydrophilic hormones
- D. all of these

Answer: C



Watch Video Solution

Exercise Iii Previous Aipmt Neet Questions

1. Hypersecretion of Growth Hormone in adults does not cause further increase in height because

A. Growth hormone becomes inactive in adults

B. Epiphyseal plates close after adolescence

C. Bones lose their sensitivity of Growth hormone in adults

D. Muscle fibres do not grow in size after birth

Answer: B



Watch Video Solution

2. GnRH, a hypothalamic hormone, needed in reproduction, acts on

A. anterior pituitary gland and stimulates secretion of LH and oxytocin.

B. Anterior pituitary gland and stimulates secretion of LH and FSH

C. Poserior pituitary gland and stimulates secretion of ozytocin and FSH

D. Poserior pitutary gland and stimulates secretion of LH and relaxin

Answer: B



Watch Video Solution

3. Which hormones do stimulate the production of pancreatic juice and bicarbonate?

A. Gastrin and insulin

B. Cholecystokinin and secretin

C. insulin and glucagon

D. Angiotensin and epinephrine

Answer: B



Watch Video Solution

4. Graves' disease is caused due to

- A. Hypersecretion of thyroid gland
- B. hyposecretion of adrenal gland
- C. hypersecretion of adrenal gland
- D. hyposecretion of thyroid gland

Answer: A



Watch Video Solution

5. Name a peptide hormone which acts mainly on hepatocytes, adipocytes and enhances cellular glucose uptake and utilization.

A. Glucagon

B. Secretin

C. Gastrin

D. Insulin

Answer: D



Watch Video Solution

6. Osteoporosis, an age-related disease of the skeletal system, may occur due to

A. High concentration of Ca^{++} and Na^{+}

B. Decreased level of estrogen

C. accumulation of uric acid leading to inflammation of joints

D. immune disorder affecting neuromuscular junction leading to fatigue

Answer: B



7. The posterior pituitary gland is not a 'true' endocrine gland because

A. it only stores and releases hormones

B. it is under the regulation of hypothalamus

C. it secretes enzymes

D. it is provided with a duet

Answer: A



[Watch Video Solution](#)

8. Several hormones like hCG, hPL, estrogen, progesterone are produced by

A. Placenta

B. Fallopian tube

C. pituitary

D. ovary

Answer: A



[Watch Video Solution](#)

9. Which of the following pairs of hormones are not antagonistic (having opposite effect) to each other ?

A. Parathomone-Calcitonin

B. Insulin-Glucagon

C. Aldosterone-Atrial Natriuretic factor

D. Relaxin-Inhibin

Answer: D



Watch Video Solution

10. Select the incorrect statement

- A. FSH stimulates the sertoli cells which help
in sperminogenesis
- B. LH triggers ovulation in ovary
- C. LH and FSH decrease gradually during the
follicular phase
- D. LH trigger secretion of androgens from
the Leydig cells

Answer: C



Watch Video Solution

11. Changes in GnRH pulse frequency in females is controlled by circulating levels of

- A. estrogen and progesterone
- B. estrogen and inhibin
- C. progesterone only
- D. progesterone and inhibin

Answer: A



Watch Video Solution

12. Identify the correct statement on inhibin

A. Inhibits the secretion of LH, FSH and prolactin

B. Is produced by granulosa cells in ovary and inhibits the secretion of FSH

C. Is produced by granulosa cells in ovary
and inhibits the secretion of LH

D. Is produced by nurse cells in tests and
inhibits the secretion of LH

Answer: B



Watch Video Solution

13. The amino acid Tryptophan is the precursor
for the synthesis of

A. Melatonin and serotonin

B. thyroxine and triiodothyronine

C. estrogen and progesterone

D. cortisol and cortisone

Answer: A



Watch Video Solution

14. A chemical signal that has both endocrine and neural roles is

A. Cortisol

B. Melatonin

C. Calcitonin

D. Epinephrine

Answer: D



Watch Video Solution

15. Which one of the following hormones is not involved in sugar metabolism ?

A. Glucagon

B. Cortisone

C. Aldosterone

D. Insulin

Answer: C



Watch Video Solution

16. Which of the following events is not associated with ovulation in human female?

A. LH surge

B. Decrease in estradiol

C. Full development of Graafian follicle

D. Release of secondary oocyte

Answer: B



Watch Video Solution

17. Which one of the following hormones is thought to be synthesised elsewhere, but is stored and released by the master gland ?

A. Melanocyte stimulating hormone

B. Antidiuretic hormone

C. Luteinizing hormone

D. Prolactin

Answer: B



Watch Video Solution

18. Identify the hormone with its correct matching of source and function

A. Oxytocin-posterior pituitary growth and maintenance of mammary glands.

B. Melatonin-pineal gland, regulates the normal rhythm of sleep-wake cycle

C. Progesterone-corpora lutea, stimulation of growth and activities of female sex organs

D. Atrial natriuretic factor-ventricular wall, increase the blood pressure

Answer: B



Watch Video Solution

19. Fight-or-flight reactions cause activation of

A. The parathyroid glands ,leading to increased metabolic rate

B. The kidney ,leading to suppression of reninangiotensin-aldosterone pathway

C. The adrenal medulla ,leading to increased secretion of epinephrine and norepinephrine

D. The pancreas, leading to a reduction in the blood sugar levels

Answer: C



Watch Video Solution

20. A pregnant female delivers a baby who suffers from stunted growth, mental retardation, low intelligence quotient and abnormal skin.

This is the result of

- A. Cancer of the thyroid gland
- B. Oversecretion of pars distalis
- C. Deficiency of iodine in diet
- D. Low secretion of growth hormone

Answer: C



Watch Video Solution

21. Wich of the following statements is correct in relation to the endocrine system ?

A. Non-nutrient chemicals produced by the body in trace amounts that act as intercellular messenger are known as hormones

B. Releasing and inhibitory hormones are produced by the pituitary gland

C. Adenohypophysis is under neural regulation of the hypothalamus

D. Organs in the body like gastrointestinal tract, heart, kidney and liver do not

produce any hormones

Answer: A



Watch Video Solution

22. Select the answer which correctly matches the endocrine gland with the hormone it

secretetes and its function/ deficiency symptom

Endocrine gland	Hormone	Function/ deficiency symptoms
(1) Thyroid gland	Thyroxine	Lack of iodine in diet results in goitre
(2) Corpus luteum	Testosterone	Stimulates spermatogenesis
(3) Anterior pituitary	Oxytocin	Stimulate uterus contraction during child birth
(4) Posterior pituitary	Growth Hormone (GH)	Oversecretion stimulates abnormal growth

A. {("Endocrine","Hormone","Function

deficiency

symptoms"),

("1)Thyroid","thyroxine","Lack of iodine in

diet result in goitre");}

B. {("Endocrine","Hormone","Function

deficiency symptoms"),("2)Corpus

luteum","Testos","stimulates spermato-

genesis terone");}

C. {("Endocrine","Hormone","Function

deficiency symptoms"),("3)Anterior

pituitary","Oxytocin

contraction","Stimulates uterus uring

child birth");}

D. {("Endocrine","Hormone","Function

deficiency symptoms"),("4)Posterior

pituitary","Growth

hormone","Oversecretion stimulates

abnormal growth");}

Answer: A



Watch Video Solution

23. Answer the following

(a) Name the endocrine gland associated with

brain?

(b) Which gland secretes digestive enzymes as well as hormones?

(c) Name the endocrine gland associated with kidneys?

(d) Which endocrine gland is present in males but not in females?

A. {("Endocrine

gland","Hormone","Function"),

("1)Placenta","Estrogen","Initiates secretion

of the milk");}

B. {("Endocrine

gland","Hormone","Function"),("2)Corpus

luteum","Estrogen","Essential formain

tenance of endometrium"):}

C. {("Endocrine

gland","Hormone","Function"),

("3)Leydig's","Androgen","Initiates the

production of sperms"):}

D. {("Endocrine

gland","Hormone","Function"),

("4)Ovary","FSH","Stimulates follicular development and the secretion of estrogens":})

Answer: C



Watch Video Solution

24. Norepinephrine

(i)Is released by sympathetic fibres

(ii)Is released by parasympathetic fibres

(iii)Increases the heart rate

(iv)Decreases blood pressure

Which of the above statements are correct?

A. (i) and (iii)

B. (ii) and (iii)

C. (ii) and (iv)

D. (i) and (iv)

Answer: A



Watch Video Solution

25. Which of the following represents the action of insulin?

A. Increases blood glucose level by stimulating glucagon production

B. Decreases blood glucose levels by forming glycogen

C. Increases blood glucose levels by promoting cellular of glucose

D. increases blood glucose levels by hydrolysis of glycogen

Answer: B



Watch Video Solution

26. Which one of the following pairs of hormones are the examples of those that can easily pass through the cell membrane of the target cell and bind to a receptor inside it (mostly in the nucleus)

A. Insulin, glucagon

B. Thyroxine, insulin

C. Somatostatin, oxytocin

D. Cortisol, testosterone

Answer: D



Watch Video Solution

27. A person entering an empty room suddenly finds a snake right in front on opening the door. Which one of the following is likely to happen in his neurohormonal control system ?

A. Sympathetic nervous system is activated releasing epinephrine and norepinephrine from adrenal medulla

B. Neurotransmitters diffuse rapidly across the cleft and transmit a nerve impulse

C. Hypothalamus activates the parasympathetic division of brain

D. Sympathetic nervous system is activated releasing epinephrine and norepinephrine from adrenal cortex

Answer: A



Watch Video Solution

28. What is correct to say about the hormone action in humans ?

A. Glucagon is secreted by β cells of islets of Langerhans and stimulates glycogenolysis

B. Secretion of thymosins is stimulated with aging

C. In females ,FSH first binds with specific receptors on ovarian cell membrane

D. FSH stimulates the secretion of estrogen and progesterone

Answer: C



Watch Video Solution

29. Match the source gland with its respective hormone and function and select the correct

option

Source gland	Hormone	Function
1) Anterior pituitary	Oxytocin hormone	Contraction of pituitary uterus muscles during child birth
2) Posterior pituitary	Vasopressin	stimulates resorption of water in the distal tubules in the nephron
3) Corpus luteum	Oestrogen	Supports pregnancy
4) Thyroid	Thyroxine	Regulates blood calcium level



[Watch Video Solution](#)

30. Given below is an incomplete table about certain hormones, their source glands and one

major effect of each on the body in humans.

Identify the correct option for the three blanks

A, B and C.

GLAND	SECRETION	EFFECT ON BODY
A	Oestrogen	Maintenance of secondary sexual characters
Alpha cells of Islets of Langerhans	B	Raises blood sugar level
Anterior pituitary	C	Over secretion leads to gigantism



[Watch Video Solution](#)

31. The 24 hour (diurnal) rhythm of our body such as the sleep - wake cycle is regulated by the hormone

A. Calcitonin

B. Prolactin

C. Adrenaline

D. Melatonin

Answer: D



Watch Video Solution

32. Injury to adrenal cortex is not likely to affect the secretion of which one of the following ?

A. Aldosterone

B. Both androstenedione and dehydro
epiandro-sterone

C. Adrenaline

D. Cortisol

Answer: C



Watch Video Solution

33. Low Ca^{++} in the body fluid may be the cause of

A. Tetany

B. Anaemia

C. Angina pectoris

D. Gout

Answer: A



Watch Video Solution

34. Which one of the following pairs is incorrectly matched ?

A. Glucagon-beta cells(source)

B. Somatostatin-delta cells(source)

C. Corpus luteum-relaxin(secretion)

D. Insulin -Diabetes mellitus(disease)

Answer: A



Watch Video Solution

35. Toxic agent present in food which interferes with thyroxine synthesis, leads to the development of

- A. toxic goitre
- B. cretinism
- C. simple goitre
- D. thyrotoxicosis

Answer: D



Watch Video Solution

36. Select the correct matching of a hormone, its source and function.

Hormone	Source	Function
(1) Vasopressin	Posterior Pituitary	Increases loss of water through urine
(2) Norepinephrine	Adrenal medulla	Increases heart beat, rate of respiration & alertness
(3) Glucagon	Beta-cells of Islets of langerhans	Stimulates glyco- genolysis
(4) Prolactin	Posterior Pituitary	Regulates growth of mammary glands and milk formation in females



Watch Video Solution

37. A health disorder that results from the deficiency of thyroxine in adults and characterized by (i) a low metabolic rate, (ii) increase in body weight and (iii) tendency to retain water in tissues is

A. Simple goitre

B. Myxoedema

C. Cretinism

D. Hypothyroidism

Answer: B



Watch Video Solution

38. Which one of the following pairs of organs includes only the endocrine glands?

- A. Thymus and testes
- B. Adrenal and ovary
- C. Parathyroid and adrenal
- D. Pancreas and parathyroid

Answer: C



Watch Video Solution

39. The blood calcium level is lowered by the deficiency of

- A. Both calcitonin and parathormone
- B. Calcitonin
- C. Parathormone
- D. Thyroxine

Answer: C



Watch Video Solution

40. Feeling the tremors of an earthquake, a scared resident of seventh floor of a multistoryed building starts climbing down the stairs rapidly. Which hormone initiated this action?

A. Adrenaline

B. Glucagon

C. Gastrin

D. Thyroxine

Answer: A



Watch Video Solution

41. A person is having problem with calcium and phosphorus metabolism in his body which one of the following glands may not be functioning properly?

A. Parotid

B. pancreas

C. Thyroid

D. Parathyroid

Answer: D



Watch Video Solution