



CHEMISTRY

BOOKS - DISHA PUBLICATION

CHEMISTRY (HINGLISH)

CHEMISTRY IN EVERDAY LIFE

Exercise

1. The correct match between items of List - I and List - II is :

List-I	List-II
(A) Phenelzine	(p) Pyrimidine
(B) Chloroxylenol	(q) Furan
(C) Uracil	(r) Hydrazine
(D) Ranitidine	(s) Phenol

A. (A) - (s), (B) - (r), (C) - (q), (D) - (p)

B. (A) - (r), (B) - (s), (C) - (p), (D) - (q)

C. (A) - (r), (B) - (s), (C) - (q), (D) - (p)

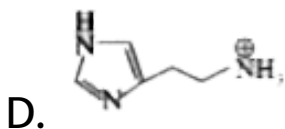
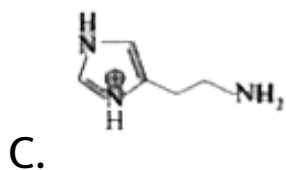
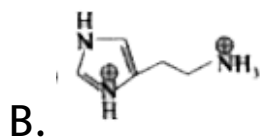
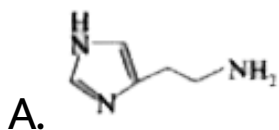
D. (A) - (s), (B) - (r), (C) - (p), (D) - (q)

Answer: B



Watch Video Solution

2. The predominant form of histamine present in human blood is (pK_a Histidine - 6.0)



Answer: D



Watch Video Solution

3. Which of the following is a bactericidal antibiotic?

A. Ofloxacin

B. Tetracycline

C. Chloramphenicol

D. Erythromycin

Answer: A



Watch Video Solution

4. Which of the following is an anionic detergent?

A. Cetyltrimethyl ammonium bromide

B. Glycerol Oleate.

C. Sodium stearate.

D. Sodium lauryl sulphate.

Answer: D



Watch Video Solution

5. Which artificial sweetener contains chlorine?

A. Sucralose

B. Alitame

C. Aspartame

D. Saccharin

Answer: A



Watch Video Solution

6. Which of the following compounds is not an antacid?

A. Phenelzine

B. Ranitidine

C. Aluminium hydroxide

D. Cimetidine

Answer: A



Watch Video Solution

7. Which one of the following is used as Antihistamine?

- A. Omeprazole
- B. Chloranphenicol
- C. Diphenhydramine
- D. Norethindrone

Answer: C



Watch Video Solution

8. Aminoglycosides are usually used as :

A. Antibiotic

B. Analgesic

C. Hypnotic

D. Antifertility

Answer: A



Watch Video Solution

9. An antipyretic is

A. quinine

B. paracetamol

C. luminal

D. piperazine

Answer: B



Watch Video Solution

10. Salol can be used as

A. antiseptic

B. antipyretic

C. analgesic

D. none of these

Answer: A



Watch Video Solution

11. Which one of the following is employed as a tranquilizer ?

A. Naproxen

B. Tetracycline

C. Chlorpheniramine

D. Equanil

Answer: D



Watch Video Solution

12. Terfenadine is commonly used as a/an

- A. tranquilizer
- B. antihistamine
- C. antimicrobial
- D. antibiotic

Answer: B



Watch Video Solution

13. Tranquillizers are substances used for the treatment of :

A. cancer

B. AIDS

C. mental diseases

D. physical disorders

Answer: C



Watch Video Solution

14. Which of the following is used for inducing sleep?

A. Paracetamol

B. Chloroquine

C. Bithional

D. Barbituric acid derivatives

Answer: D



Watch Video Solution

15. Chloramine - T is a/an.

A. disinfectant

B. antiseptic

C. analgesic

D. antipyretic

Answer: B



Watch Video Solution

16. Penicilin was first discovered by .

A. A.Fleming

B. Tence and Salke

C. S.A. Waksna

D. Lewis Pasteur

Answer: A



Watch Video Solution

17. Which of the following terms means pain killer ?

A. Antibiotic

B. Analgesic

C. Anitpyretic

D. Penicillin

Answer: B



Watch Video Solution

18. Which of the following hormones is produced under the conditions of stress which stimulate glycogenolysis in the liver of human beings ?

A. Thyroxine

B. Insulin

C. Adrenaline

D. Estradiol

Answer: C



Watch Video Solution

19. Arsenic containing medicine used for the treatment of syphilis is :

- A. Tetracycline
- B. Ofloxacin
- C. Erythromycin
- D. Salvarsan

Answer: D



Watch Video Solution

20. Which of the following is an insecticide?

A. Bakelite

B. TNT

C. BHC

D. Aspirin

Answer: C



Watch Video Solution

21. Which of the following statements about aspirin is not true ?

- A. It is effective in relieving pain
- B. It is a neurologically durg
- C. It has antiblood clotting action
- D. It belong to narcotic analgesics .

Answer: D



Watch Video Solution

22. Chemically heroin is

A. morphine monoacetate

B. morphine dibenzoate

C. morphine diacetate

D. morphine monobenzoate

Answer: C



Watch Video Solution

23. Sulphonamides act as

A. Antiseptic

B. Analgesic

C. Antimicrobials

D. Antipyretic

Answer: C



Watch Video Solution

24. Substances used for bringing down temperature in high fever are called

A. pyretics

B. antipyretics

C. antibiotics

D. antiseptics

Answer: B



Watch Video Solution

25. Various phenol derivatives, tincture of iodine (2-3%) I_2 , in (water/alcohol) and some dyes like methylene blue are

A. antiseptics

B. disinfectants

C. analgesics

D. antipyretics

Answer: A



Watch Video Solution

26. The insecticide containing 99% γ - isomer of benzene hexachloride is known as

A. lindane

B. TNT

C. malathion

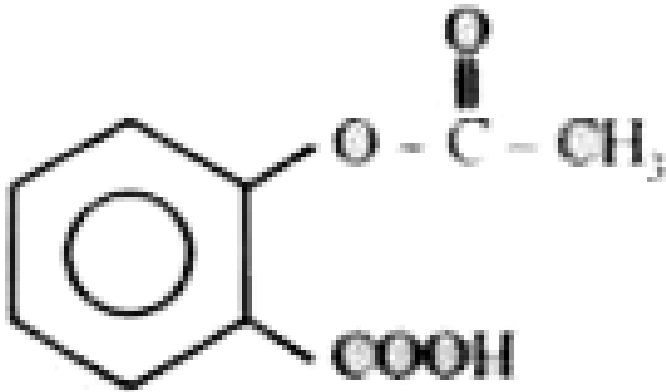
D. methoxychlor

Answer: A



Watch Video Solution

27. The following compound is used as



- A. an anti-inflammatory compound
- B. analgesic
- C. hypnotic
- D. antiseptic

Answer: B



Watch Video Solution

28. Amoxycillin is semi-synthetic modification of

A. penicillin

B. streptomycin

C. tetracyclin

D. chloroamphenicol

Answer: A



Watch Video Solution

29. Which of these is a hypnotic?

A. metaldehyde

B. acetaldehyde

C. paraldehyde

D. none of these

Answer: C



Watch Video Solution

30. Which of the following is used as an antibiotic?

A. ciprofloxacin

B. paracetamol

C. ibuprofen

D. tocopherol

Answer: A



31. Barbituric acid and its derivatives are well known as

A. antipyretics

B. analgesics

C. antiseptics

D. traquillizers

Answer: D



32. The drug used for the prevention of heart attacks is

A. aspirin

B. valium

C. chloramphenicol

D. cephalosporin

Answer: A



Watch Video Solution

33. Omeoprazole and lansoprazole are used as

-

A. antifertility

B. antiallergic

C. antibiotic

D. antacid

Answer: D



Watch Video Solution

34. Sulpha drugs are used for

- A. precipitating bacteria
- B. removing bacteria
- C. decreasing the size of bacteria
- D. stopping the growth of bacteria

Answer: D



Watch Video Solution

35. Streptomycin is effective in the treatment of

A. tuberculosis

B. malaria

C. typhoid

D. cholera

Answer: A



Watch Video Solution

36. An antibiotic with a broad spectrum

A. kills the antibodies

B. acts on a specific antigen

C. acts on different antigens

D. acts on both the antigens and
antibodies

Answer: C



Watch Video Solution

37. Which of the following is not an antiseptic drug?

A. Iodoform

B. Dettol

C. Gammexane

D. Genation violet

Answer: C



Watch Video Solution

38. A medicine which promotes the secretion of urine is called

A. uretic

B. monouretic

C. diuretic

D. triuretic

Answer: C



Watch Video Solution

39. Veronal, a barbiturate drug, is used as

A. anaesthetic

B. sedative

C. antiseptic

D. None of these

Answer: B



Watch Video Solution

40. An antibiotic effective in treatment of pneumonia, bronchitis etc. is

- A. streptomycin
- B. chloramphenicol
- C. penicillin
- D. sulphaguanidine

Answer: C



Watch Video Solution

41. An ester used as medicine is :

- A. ethyl acetate
- B. methyl acetate
- C. methyl salicylate
- D. ethyl benzoate

Answer: C



Watch Video Solution

42. Select the incorrect statement

A. Equanil is used to control depression and hypertension.

B. Mifepristone is a synthetic steroid used as "morning after pill"

C. 0.2 per cent solution of phenol is an antiseptic while its 1.0 per cent solution is a disinfectant.

D. A drug which kills the organism in the body is called bacteriostatic.

Answer: D



[View Text Solution](#)

43. Which of the following acts as an antioxidant in edible oils?

A. Vitamin B

B. Vitamin C

C. Vitamin D

D. Vitamin E

Answer: D



44. Which of the following is used as an antioxidant in food?

A. BTX

B. BHT

C. BHC

D. All the three

Answer: B



45. Which one of the following compounds is an anti-fertility drug?

A. Aspirin

B. Chloromycetin

C. Saheli

D. Penicillin

Answer: C



Watch Video Solution

46. Which is used for sterilization of water in water supply system of cities?

A. Chlorine

B. Sulphurdioxide

C. Potassium permanganate

D. DDT

Answer: A



Watch Video Solution

47. A drug which is effective in curing malaria is

A. quinine

B. aspirin

C. analgin

D. equanil

Answer: A



Watch Video Solution

48. Heroin is a derivative of

A. cocaine

B. morphine

C. caffeine

D. nicotine

Answer: B



Watch Video Solution

49. The formulation of Dettol contains:

A. chloroxylenol

B. terpineol

C. alcohol

D. All of these

Answer: D



Watch Video Solution

50. Which of the following is an alkaloid?

A. Nicotine

B. Piperine

C. Cocaine

D. All of these

Answer: D



Watch Video Solution

51. Morphine is

- A. an alkaloid
- B. an enzyme
- C. a carbohydrate
- D. a protein

Answer: A



Watch Video Solution

52. Which of the following is an antidiabetic drug?

A. Insulin

B. Penicillin

C. Chloroquine

D. Aspirin

Answer: A



Watch Video Solution

53. Further growth of cancerous cells in the body is arrested by:

A. physiotherapy

B. chemotherapy

C. electrotherapy

D. psychotherapy

Answer: B



Watch Video Solution

54. Structurally biodegradable detergents, should contain

- A. normal alkyl chain
- B. branched alkyl chain
- C. phenyl side chain
- D. cyclohexyl side chain

Answer: B



Watch Video Solution

55. Detergents are prepared by the action of H_2SO_4 , on which of the following?

- A. Cholesterol
- B. Lauryl alcohol
- C. Cyclohexanol
- D. p-Nitrophenol

Answer: B



Watch Video Solution

56. Substance used for the preservation of coloured fruit juices is

A. benzene

B. benzoic acid

C. phenol

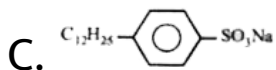
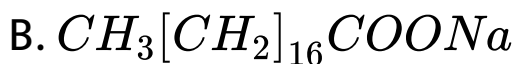
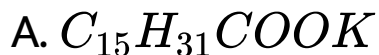
D. sodium meta bisulphite

Answer: B



Watch Video Solution

57. Which of the following represents a synthetic detergent?



D. None of these

Answer: C



Watch Video Solution

58. Match the chemical in Column I with their uses in Column II.

	Column I		Column II
(A)	Sodium perborate	(I)	Disinfectant
(B)	Chlorine	(II)	Antiseptic
(C)	Bithional	(III)	Milk bleaching agent
(D)	Potassium stearate	(IV)	Soap

A. $A - I, B - II, C - III, D - IV$

B. $A - II, B - III, C - IV, D - I$

C. $A - III, B - I, C - II, D - I$

D. $A - IV, B - I, C - II, D - III$

Answer: C



Watch Video Solution

59. An antibiotic contains nitro group attached to aromatic nucleus. It is

- A. penicillin
- B. streptomycin
- C. tetracycline
- D. chloramphenicol

Answer: D



Watch Video Solution

60. Sulphaguadine is used for

- A. dysentery
- B. urinary infections
- C. antiseptic
- D. antipyretic

Answer: A



Watch Video Solution

61. Interferon is connected with

A. tonic

B. virus

C. carbohydrate

D. ore of iron

Answer: B



Watch Video Solution

62. Phenacetin is used as

A. antipyretic

B. antiseptic

C. antimalarial

D. antibiotic

Answer: A



Watch Video Solution

63. A large number of antibiotics have been isolated from

A. Bacteria actinomycetes

B. Acids

C. Alkanals

D. Bacteria rhizobium

Answer: A



Watch Video Solution

64. Aspirin can be prepared by the reaction of

A. Salicylaldehyde with acetic anhydride in presence of H_2SO_4

B. Salicylic acid with methanol in presence of H_2SO_4

C. Salicylic acid with acetic anhydride in presence of H_2SO_4

D. Cinnamic acid with acetic anhydride in presence of H_2SO_4

Answer: C



Watch Video Solution

65. Which of the following is a hallucinogenic drug?

A. Methedrine

B. Calmpose

C. LSD

D. Seconal

Answer: C



Watch Video Solution

66. Placebo is often given to patients. It is

- A. an antidepressant
- B. a broad spectrum antibiotic
- C. a sugar pill
- D. a tonic

Answer: C



Watch Video Solution

67. An antibiotic with a broad spectrum

A. kills the antibodies

B. acts on a specific antigen

C. acts on different antigens

D. acts on both the antigens and
antibodies

Answer: C



Watch Video Solution

68. H_1 Receptor antagonists is a term associated with:

A. Antiseptics

B. Antihistamin

C. Antacids

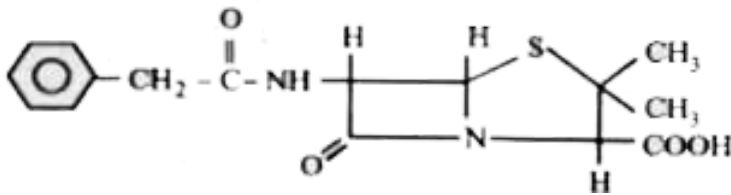
D. Analgesics

Answer: B



Watch Video Solution

69. The structure given below is known as



A. Penicillin F

B. Penicillin G

C. Penicillin K

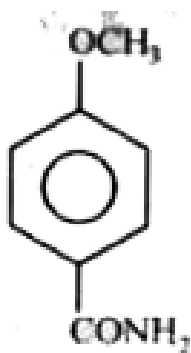
D. Ampicillin

Answer: B

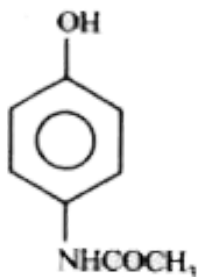


Watch Video Solution

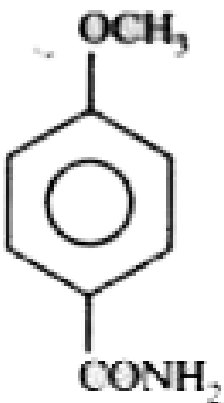
70. The correct structure of the drug paracetamol is :



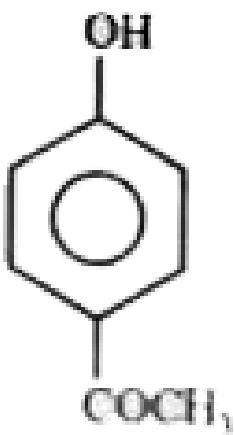
A.



B.



C.



D.

Answer: B



Watch Video Solution

71. Which one of the following can possibly be used as analgesic without causing addiction and mood modification?

A. Diazepam

B. Morphine

C. N-acetyl-para-aminophenol

D. Tetrahydrocannabinol

Answer: C



Watch Video Solution

72. Antiseptics and disinfectants either kill or prevent growth of microorganisms. Identify which of the following statements is not true:

A. Chlorine and iodine are used as strong disinfectants.

B. Dilute solutions of boric acid and hydrogen Peroxide are strong antiseptics.

C. Disinfectants harm the living tissues.

D. A 0.2% solution of phenol is an antiseptic while 1% solution acts as a disinfectant.

Answer: B



View Text Solution

73. Which is correct about vanillin?

- A. A flavouring agent having vanilla flavour
- B. p-hydroxy-m-methoxybenzaldehyde

C. A food additive

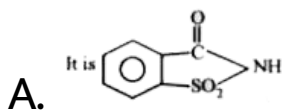
D. All of these

Answer: D



Watch Video Solution

74. Which is correct about saccharin ?



B. It is 600 times sweeter than sugar

C. It is used as sweetening agent

D. All of these

Answer: D



Watch Video Solution

75. Benzalkonium chloride is a .

A. cationic surfactant and antiseptic

B. anionic surfactant and soluble in most
of organic solvents

C. cationic surfactant and insoluble in most
of organic solvents

D. cationic surfactant and antimalarial

Answer: A



Watch Video Solution

76. Antiseptic chloroxylenol is

A. 4-chloro-3,5-dimethylphenol

B. 3-chloro-4, 5-dimethylphenol

C. 4-chloro-2,5-dimethylphenol

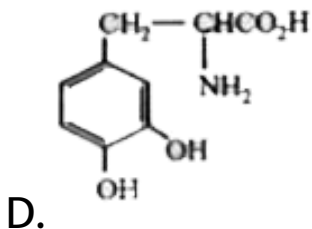
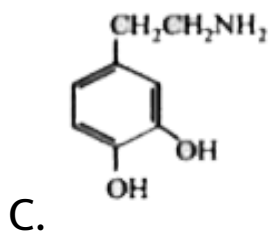
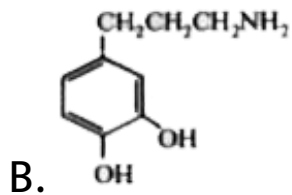
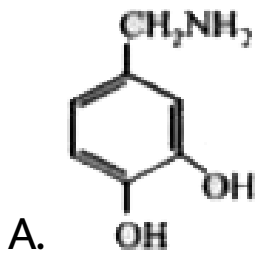
D. 5-chloro-3, 4-dimethylphenol

Answer: A



Watch Video Solution

77. Parkinson's disease is linked to abnormalities in the levels of dopamine in the body. The structure of dopamine is



Answer: C



Watch Video Solution

78. Arsenic drugs are mainly used in the treatment of

A. Jaundice

B. Typhoid

C. Syphilis

D. Cholera

Answer: C



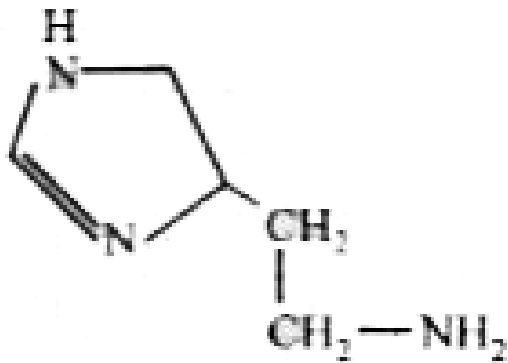
Watch Video Solution

79.

The

drug

The drug



is used

as .

- A. Antacid
- B. Analgesic
- C. Antimicrobial
- D. Antiseptic

Answer: A



Watch Video Solution

80. Which one of the following is employed as a tranquilizer drug ?

A. Promethazine

B. Valium

C. Naproxen

D. Mifepristone

Answer: B



Watch Video Solution

81. Which of the following hormones contains iodine

- A. Insulin
- B. Testosterone
- C. Adrenaline
- D. Thyroxine

Answer: D



Watch Video Solution

82. Chloramphenicol is an :

- A. antifertility drug
- B. antihistaminic
- C. antiseptic and disinfectant
- D. antibiotic-broad spectrum

Answer: D



Watch Video Solution

83. Streptomycin, a well-known antibiotic, is a derivative of

A. peptides

B. carbohydrates

C. purines

D. terpenes

Answer: B



84. Artificial sweetner which is stable under cold conditions only is :

A. Saccharine

B. Sucralose

C. Aspartame

D. Alitame

Answer: C



85. Bithional is generally added to the soaps as an additive to function as a / an

- A. Dryer
- B. Buffering agent
- C. Antiseptic
- D. Softner

Answer: C



Watch Video Solution

86. Which of the following is an analgesic?

A. Novalgin

B. Penicillin

C. Streptomycin

D. Chloromycetin

Answer: A



Watch Video Solution

87. Mixture of chloroxylenol and terpineol acts

as :

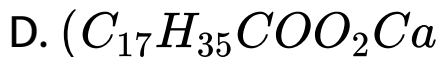
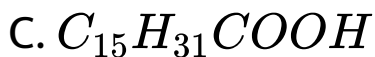
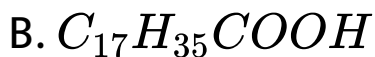
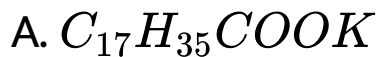
- A. antiseptic
- B. antipyretic
- C. antibiotic
- D. analgesic

Answer: A



Watch Video Solution

88. Which of the following represents soap?



Answer: A



Watch Video Solution