



MATHS

BOOKS - ARIHANT MATHS (ENGLISH)

LIMITS

Examples

1. $\lim_{x \rightarrow 2} \frac{x^6 - 24x - 16}{x^3 + 2x - 12}$

 [Watch Video Solution](#)

2. Evaluate $\lim_{x \rightarrow 0} \frac{x \tan 2x - 2x \tan x}{(1 - \cos 2x)^2}$.

 [Watch Video Solution](#)

3. Evaluate $\lim_{x \rightarrow 1} \frac{x^2 - 3x + 2}{x - 1}$

 [Watch Video Solution](#)

4. Evaluate $\lim_{x \rightarrow 1} \frac{x^2 + x \log_e x - \log_e x - 1}{(x^2) - 1}$

 [Watch Video Solution](#)

5. Evaluate $\lim_{h \rightarrow 0} \frac{\sqrt{x+h} - \sqrt{x}}{h}$

 [Watch Video Solution](#)

6. The value of $\lim_{x \rightarrow 2a} \frac{\sqrt{x-2a} + \sqrt{x} - \sqrt{2a}}{\sqrt{x^2 - 4a^2}}$ is

 [Watch Video Solution](#)

7. Evaluate $\lim_{x \rightarrow 2} \frac{x^3 - 2^3}{x - 2}$

 [Watch Video Solution](#)

8. Evaluate $\lim_{x \rightarrow 1} \frac{x + x^2 + \dots + x^n - n}{x - 1}$

 [Watch Video Solution](#)

9. The value of $\lim_{x \rightarrow 1} \frac{y^3}{x^3 - y^2 - 1}$ as $(x, y) \rightarrow (1, 0)$ along the line $y = x - 1$ is

A. 1

B. -1

C. 0

D. Doesn't exist

Answer:

 [Watch Video Solution](#)

10. Evaluate $\lim_{x \rightarrow \infty} \frac{x^2 + 5}{x^2 + 4x + 3}$

 [Watch Video Solution](#)

11. Evaluate $\lim_{n \rightarrow \infty} \frac{(n+2)! + (n+1)!}{(n+2)! - (n+1)!}$

 [Watch Video Solution](#)

12. $\lim_{x \rightarrow \infty} (x - \sqrt{x^2 + x})$

 [Watch Video Solution](#)

13. Evaluate : $\lim_{x \rightarrow \infty} \sqrt{x^2 + x + 1} - \sqrt{x^2 + 1}$

 [Watch Video Solution](#)

14. Evaluate $\lim_{x \rightarrow \infty} \frac{ax^2 + b}{x + 1}$ when $a \geq 0$

 [Watch Video Solution](#)

15. If $\lim_{x \rightarrow \infty} \left(\frac{x^2 + 1}{x + 1} - ax - b \right) = 0$, find the values of a and b .

 [Watch Video Solution](#)

16. If $\lim_{x \rightarrow \infty} \left\{ \frac{x^2 + 1}{x + 1} - ax - b \right\} = 2$, then

 [Watch Video Solution](#)

17. If $\lim_{x \rightarrow \infty} \left(\frac{x^2 + 1}{x + 1} - ax - b \right) = 0$, find the values of a and b .

 [Watch Video Solution](#)

18. Let $S_n = 1 + 2 + 3 + \dots + n$ and

$$P_n = \frac{S_2}{S_2 - 1} \frac{S_3}{S_3 - 1} \frac{S_4}{S_4 - 1} \dots \frac{S_n}{S_n - 1} \quad \text{Where } n \in N, (n \geq 2). \quad \text{Then}$$

$$(\lim)_{n \rightarrow \infty} P_n = _ _ _$$



[Watch Video Solution](#)

19. If $(\lim)_{n \rightarrow \infty} \frac{1}{(\sin^{-1} x)^n + 1} = 1$, then $f \in$ the value of x .

A. $(-\sin 1, \sin 1)$

B. $(-1, 1)$

C. $(0, 1)$

D. $(-1, 0)$

Answer: A:C



[Watch Video Solution](#)

20. Evaluate $\lim_{x \rightarrow 0} \frac{1 - \cos 2x}{x^2}$

 [Watch Video Solution](#)

21. Solve $\lim_{x \rightarrow 0} \frac{1 - \cos(1 - \cos x)}{\sin^4 x}$

 [Watch Video Solution](#)

22. Evaluate $\lim_{x \rightarrow \infty} (2^{-x} \sin(2^x))$

 [Watch Video Solution](#)

23. Evaluate $\lim_{x \rightarrow \infty} e^x \sin(d/e^x)$.

 [Watch Video Solution](#)

24. Evaluate $\lim_{x \rightarrow \infty} \sqrt{\frac{x - \sin x}{x + \cos^2 x}}$

 [Watch Video Solution](#)

25. the value of $\lim_{x \rightarrow y} \frac{\sin^2 x - \sin^2 y}{x^2 - y^2}$ equals

 [Watch Video Solution](#)

26. $(\lim)_{x \rightarrow \infty} \{x + 5) \tan^{-1}(x + 5) - (x + 1) \tan^{-1}(x + 1)\}$ is equal to
 π (b) 2π (c) $\frac{\pi}{2}$ (d) none of these

A. π

B. 2π

C. $\frac{\pi}{2}$

D. None of these

Answer: B

 [Watch Video Solution](#)

27. Evaluate $\lim_{x \rightarrow 0} \frac{\sin(\pi \cos^2 x)}{x^2}$

 [Watch Video Solution](#)

28. Let $a = \min \{x^2 + 2x + 3, x \in R\}$ and $b = \lim_{\theta \rightarrow 0} \frac{1 - \cos \theta}{\theta^2}$ then the value of $\sum_{r=0}^n a^r \cdot b^{n-r}$ is :

 [Watch Video Solution](#)

29. $\lim_{n \rightarrow \infty} \cos \frac{x}{2} \cdot \cos \frac{x}{4} \cdot \cos \frac{x}{8} \dots \dots \cos \frac{x}{2^n}$

 [Watch Video Solution](#)

30. Evaluate $\lim_{x \rightarrow a} \frac{\log\{1 + (x - a)\}}{(x - a)}$

 [Watch Video Solution](#)

31. Evaluate $\lim_{h \rightarrow 0} \frac{\log_{10}(1+h)}{h}$

 Watch Video Solution

32. Evaluate $\lim_{x \rightarrow 0} \frac{\log(5+x) - \log(5-x)}{x}$.

 Watch Video Solution

33. $(\lim)_{x \rightarrow 0} \frac{1n(1+2h) - 21n(1+h)}{h^2} = _ _$

 Watch Video Solution

34. The value of $\lim_{x \rightarrow \infty} \left(x - x^2 \log_e \left(1 + \frac{1}{x} \right) \right)$ is _____.

 Watch Video Solution

35. Evaluate $\lim_{x \rightarrow 0} \frac{a^x - b^x}{x}$

 [Watch Video Solution](#)

36. Evaluate $\lim_{x \rightarrow 0} \frac{(ab)^x - a^x - b^x + 1}{x^2}$

 [Watch Video Solution](#)

37. $\lim_{x \rightarrow 0} \frac{e^{\tan x} - e^x}{\tan x - x} =$

 [Watch Video Solution](#)

38. Evaluate $\lim_{x \rightarrow 0} \frac{ae^x - b}{x} = 2$. Find a and b

 [Watch Video Solution](#)

39. Find the constant a , b and c such that

$$\lim_{x \rightarrow 0} \frac{axe^x - b \log(1+x) + cxe^{-x}}{x^2 \sin x} = 2$$

 [Watch Video Solution](#)

40. Evaluate $\lim_{x \rightarrow \infty} \left(1 + \frac{2}{x}\right)^x$

 [Watch Video Solution](#)

41. $\lim_{x \rightarrow 1} (\log_3 3x)^{\log_x 3} =$

 [Watch Video Solution](#)

42. Evaluate $\lim_{x \rightarrow a} \left(2 - \frac{a}{x}\right)^{\tan \frac{\pi x}{2a}}$

 [Watch Video Solution](#)

43. Evaluate the following limits :

$$\lim_{x \rightarrow \infty} \left(\frac{x + 6}{x + 1} \right)^{x+4}$$



Watch Video Solution

44. Evaluate $\lim_{x \rightarrow 0} (1 + \tan^2 \sqrt{x})^{\frac{1}{2x}}$



Watch Video Solution

45. Evaluate $\lim_{x \rightarrow 0} \left\{ \tan\left(\frac{\pi}{4} + x\right) \right\}^{\frac{1}{x}}$



Watch Video Solution

46. Evaluate $\lim_{x \rightarrow 0} \left(\frac{1 + 5x^2}{1 + 3x^2} \right)^{1/x^2}$



Watch Video Solution

47. Evaluate $\lim_{x \rightarrow \infty} \left(\frac{x-3}{x+2} \right)^x$

 [Watch Video Solution](#)

48. $\lim_{x \rightarrow 0} \sin^2 \left(\frac{\pi}{2 - px} \right)^{\sec^2 \left(\left(\frac{\pi}{2 - px} \right) \right)}$

A. $e^{-a/b}$

B. a^{-a^2/b^2}

C. $a^{2a/b}$

D. $e^{4a/b}$

Answer: B

 [Watch Video Solution](#)

49. Evaluate: $(\lim)_{x \rightarrow \frac{7}{2}} (2x^2 - 9x + 8)^{\cot(2x-7)}$

A. $e^{5/2}$

B. $e^{-5/2}$

C. $e^{7/2}$

D. $e^{3/2}$

Answer: A::C



Watch Video Solution

50. The value of $\lim_{x \rightarrow 1} \left(\tan\left(\frac{\pi}{4} + \log x\right) \right)^{\frac{1}{\log x}}$ is equal to

A. e

B. e^{-1}

C. e^2

D. e^{-2}

Answer: A::C



Watch Video Solution

51. $\lim_{x \rightarrow 0} \left(\sin \frac{x}{m} + \cos \frac{3x}{m} \right)^{(2m)/x}$ is

A. e

B. 1

C. e^{-1}

D. e^2

Answer: A::C::D



Watch Video Solution

52. The value of $\lim_{n \rightarrow \infty} \left(\frac{a - 1 + \sqrt[n]{b}}{a} \right)^n$ ($a > 0, b > 0$) is equal to

A. $\sqrt[n]{b}$

B. $\sqrt[n]{a}$

C. \sqrt{b}

D. \sqrt{a}

Answer: A::C

 [Watch Video Solution](#)

53. Evaluate $\lim_{x \rightarrow 0} |x|^{\sin x}$

 [Watch Video Solution](#)

54. Evaluate $\lim_{n \rightarrow \infty} (\pi n)^{2/n}$

 [Watch Video Solution](#)

55. evaluate $\lim_{n \rightarrow \infty} \left(\frac{e^n}{\pi} \right)^{\frac{1}{n}}$

 [Watch Video Solution](#)

56. Evaluate $\lim_{x \rightarrow 0} (\cos ecx)^x$.



Watch Video Solution

57. Solve $\lim_{x \rightarrow 0} \frac{(1+x)^{1/x} - e}{x}$



Watch Video Solution

58. Evaluate the left-and right-hand limits of the function

$$f(x) = \begin{cases} \frac{|x-4|}{x-4}, & x \neq 4, \\ 0, & x = 4, \end{cases} \text{ at } x = 4$$



Watch Video Solution

59. Let $f(x) = \begin{cases} 5x - 4, & 0 < x \leq 1 \\ 4x^3 - 3x, & 1 < x < 2. \end{cases}$

Find $\lim_{x \rightarrow 1} f(x)$.



Watch Video Solution

60. Show that $\lim_{x \rightarrow 0} \frac{e^{1/x} - 1}{e^{1/x} + 1}$ does not exist.



Watch Video Solution

61. $\lim_{x \rightarrow 1} \frac{\sqrt{1 - \cos 2(x - 1)}}{x - 1},$

A. (a) exists and equals to $\sqrt{2}$

B. (b) exists and equals to $-\sqrt{2}$

C. (c) does not exist

D. (d) None of these

Answer: Hence $\lim_{x \rightarrow 1} f(x)$ doesn't exist.



Watch Video Solution

62. Solve (i) $\lim_{x \rightarrow 1} \sin x$ (ii) $\lim_{x \rightarrow 0^+} \left[\frac{\sin x}{x} \right]$

(iii) $\lim_{x \rightarrow 0^-} \left[\frac{\sin x}{x} \right]$

(where $[.]$ denotes greatest integer function)



Watch Video Solution

63. Solve (i) $\lim_{x \rightarrow \infty} \tan^{-1} x$

(ii) $\lim_{x \rightarrow -\infty} \tan^{-1} x$

(where $[.]$ denotes greatest integer function)

 [Watch Video Solution](#)

64. Solve (i) $\lim_{x \rightarrow 0^+} \left[\frac{\tan x}{x} \right]$

(ii) $\lim_{x \rightarrow 0^-} \left[\frac{\tan x}{x} \right]$

(where $[.]$ denotes greatest integer function)

 [Watch Video Solution](#)

65. Solve (i) $\lim_{x \rightarrow 1^-} \sin(\sin^{-1} x)$ (ii) $\lim_{x \rightarrow \pi/2} \sin^{-1}(\sin x)$

 [Watch Video Solution](#)

66. Solve (i) $\lim_{x \rightarrow 0} \cot x$

(ii) $\lim_{x \rightarrow +\infty} \cot^{-1} x$

(where $[.]$ denotes greatest integer function)

 [Watch Video Solution](#)

67. Solve $\lim_{x \rightarrow 0} \left[\sin \frac{|x|}{x} \right]$, where $e[.]$ denotes greatest integer function.

 [Watch Video Solution](#)

68. Solve $\lim_{x \rightarrow 0} \left[\sin \frac{|x|}{x} \right]$, where $e[.]$ denotes greatest integer function.

 [Watch Video Solution](#)

69. $\lim_{x \rightarrow 0} \left[\frac{-2x}{\tan x} \right]$, where $[.]$ denotes greatest integer function is

A. -1

B. 4

C. 5

D. None of these

Answer: A::C::D



Watch Video Solution

70. Evaluate $\lim_{x \rightarrow 0} x^3 \cos \frac{2}{x}$.



Watch Video Solution

71. Evaluate $\lim_{x \rightarrow \infty} \frac{x^2(2 + \sin^2 x)}{x + 100}$



Watch Video Solution

72. $\lim_{n \rightarrow \infty} \left(\frac{1}{n^2 + 1} + \frac{2}{n^2 + 2} + \frac{3}{n^2 + 3} + \dots + \frac{n}{n^2 + n} \right)$





Watch Video Solution

73. The value of the $\lim_{x \rightarrow 0} \frac{x}{a} \left[\frac{b}{x} \right]$ ($a \neq 0$) (where $[\cdot]$ denotes the greatest integer function) is

A. a

B. b

C. $\frac{b}{a}$

D. $1 - \frac{b}{a}$

Answer: A:C



Watch Video Solution

74. If $[x]$ denotes the greatest integer less than or equal to x , then evaluate $\lim_{n \rightarrow \infty} \frac{1}{n^2} ([1. x] + [2. x] + [3. x] + \dots + [n. x])$.



Watch Video Solution

75. $\lim (x \rightarrow 0) \left(\frac{1}{x^5} \int_0^x e^{-t^2} dt - \frac{1}{x^4} + \frac{1}{3x^2} \right)$ is equal to

 [Watch Video Solution](#)

76. Evaluate $\lim_{x \rightarrow 0} \frac{x - \left(\int_0^x \cos t dt \right)}{x^3 - 6x}$

 [Watch Video Solution](#)

77. Evaluate $\lim_{x \rightarrow 0} \frac{\int_0^{x^2} \cos^2 t dt}{x \sin x}$

 [Watch Video Solution](#)

78. $\lim_{n \rightarrow \infty} \frac{1}{n} \sum_{r=1}^{2n} \frac{r}{\sqrt{n^2 + r^2}}$ equals

 [Watch Video Solution](#)

79. The value of

$$\lim_{n \rightarrow \infty} \left[\frac{1}{n^2 + 1^2} + \frac{2}{n^2 + 2^2} + \dots + \frac{n}{n^2 + n^2} \right], \text{ is}$$

 [Watch Video Solution](#)

80. Evaluate: $(\lim)_{n \rightarrow \infty} \left[\frac{n!}{n^n} \right]^{1/n}$

A. $\frac{1}{e}$

B. e

C. e^2

D. $\frac{1}{e^2}$

Answer: A:C

 [Watch Video Solution](#)

81. The value of $\lim_{x \rightarrow 0} \frac{x \sin(\sin x) - \sin^2 x}{x^6}$ equals

A. (a) $\frac{1}{6}$

B. (b) $\frac{1}{12}$

C. (c) $\frac{1}{18}$

D. (d) $\frac{1}{24}$

Answer: A::B::C

 [Watch Video Solution](#)

82. If $\lim_{x \rightarrow 0} \frac{\log_e \cot\left(\frac{\pi}{4} - K_1 x\right)}{\tan K_2 x} = 1$, then

A. $K_1 = K_2$

B. $2K_1 = K_2$

C. $K_1 = 2K_2$

D. $K_1 = 4K_2$

Answer: A::B

 [Watch Video Solution](#)

83.

Let

$$f(\theta) = \frac{1}{\tan^2 \theta} \left\{ (1 + \tan \theta)^3 + (2 + \tan \theta)^3 + \dots + (10 + \tan \theta)^3 \right\} - 10 \tan \theta$$

Then, $\lim_{\theta \rightarrow \frac{\pi}{2}} f(\theta)$ is equal to

- A. 170
- B. 166
- C. 165
- D. None of these

Answer: A



Watch Video Solution

84. For positive integers $k=1,2,3,\dots,n$, let S_k denotes the area of $\triangle AOB_k$

such that $\angle AOB_k = \frac{k\pi}{2n}$, $OA=1$ and $OB_k = k$ The value of the

$$\lim_{n \rightarrow \infty} \frac{1}{n^2} \sum_{k=1}^n S_k \text{ is}$$

A. $\frac{2}{\pi^2}$

B. $\frac{4}{\pi^2}$

C. $\frac{8}{\pi^2}$

D. $\frac{1}{(2\pi)^2}$

Answer: B



Watch Video Solution

85. Evaluate: $(\lim)_{x \rightarrow 2} \frac{\sqrt{(x+7)} - 3\sqrt{(2x-3)}}{(x+6)^{\frac{1}{3}} - 2(3x-5)^{\frac{1}{3}}}$

A. $\frac{33}{23}$

B. $\frac{34}{23}$

C. $\frac{54}{25}$

D. None of these

Answer: B::C::D



Watch Video Solution

86.

Let

$$g(x) = |f(x+c)f(x+2c)f(x+3c)f(c)f(2c)f(3c)f'(c)f'(2c)f'(3c)|,$$

where c is constant, then find $(\lim_{x \rightarrow 0} \frac{g(x)}{x})$

A. 0

B. 1

C. 2

D. 3

Answer: A::C::D



Watch Video Solution

87. Let $\lim_{x \rightarrow 1} \frac{x^a - ax + a - 1}{(x - 1)^2} = f(a)$. The value of $f(101)$ equals

A. 5050

B. 5151

C. 4950

D. 101

Answer: A::B



Watch Video Solution

88. $(\lim)_{x \rightarrow 1} \frac{nx^{n+1} - (n+1)x^n + 1}{(e^x - e)\sin \pi x}$, where $n = 100$, is equal to :

$\frac{5050}{\pi e}$ (b) $\frac{100}{\pi e}$ (c) $-\frac{5050}{\pi e}$ (d) $-\frac{4950}{\pi e}$

A. $\frac{5050}{\pi e}$

B. $\frac{100}{\pi e}$

C. $-\frac{5050}{\pi e}$

D. $-\frac{4950}{\pi e}$

Answer: A



Watch Video Solution

89. The value of $\lim_{n \rightarrow \infty} \frac{1 \cdot n + 2 \cdot (n - 1) + 3 \cdot (n - 2) + \dots + n \cdot 1}{1^2 + 2^2 + \dots + n^2}$ is

A. $\frac{1}{3}$

B. $\frac{2}{3}$

C. $\frac{1}{2}$

D. $\frac{1}{6}$

Answer: A



Watch Video Solution

90. $\lim_{x \rightarrow \infty} \frac{\cot^{-1}(x^{-a} \log_a x)}{\sec^{-1}(a^x \log_x a)}, (a > 1)$, is equal to

A. 1

B. 0

C. $\frac{\pi}{2}$

D. Doesn't exist

Answer: A:B

 [Watch Video Solution](#)

91. Find slope of tangent if equation of the curve is $y = 3x^4 - 4x$ at $x = 4$

 [Watch Video Solution](#)

92.
$$\lim_{x \rightarrow \infty} \frac{\cot^{-1}(\sqrt{x+1} + \sqrt{x})}{\sec^{-1}\left\{\left(\frac{2x+1}{x-1}\right)^x\right\}} =$$

A. 1

B. 0

C. $\frac{\pi}{2}$

D. None of these

Answer: A



Watch Video Solution

93. Evaluate $\lim_{n \rightarrow \infty} \cos\left(\pi\sqrt{n^2 + n}\right)$ when n is an integer.

A. 1

B. -1

C. 0

D. Doesn't exist

Answer:



Watch Video Solution

94. The value of $\lim_{x \rightarrow 0} \frac{(\tan(\{x\} - 1))\sin\{x\}}{\{x\}(\{x\} - 1)}$ is where $\{x\}$ denotes the fractional part function

A. 1

B. $\tan 1$

C. $\sin 1$

D. Doesn't exist

Answer: C::D



Watch Video Solution

95. $\lim_{x \rightarrow 0^-} (-\ln(\{x\} + |[x]|))^{x}$ is equal to

A. 0

B. 1

C. $\ln 2$

D. $\ln \frac{1}{2}$

Answer: A::B



Watch Video Solution

96. $\lim_{x \rightarrow \infty} \frac{2 + 2x + \sin 2x}{(2x + \sin 2x)e^{\sin x}}$ is equal to

A. 0

B.

C. -1

D. Non- existent

Answer: A



Watch Video Solution

97. The value of $\lim_{x \rightarrow 0} (\cos ax)^{\cos ec^2 bx}$ is

A. a) $e^{\left(-\frac{8b^2}{a^2}\right)}$

B. b) $e^{\left(-\frac{8a^2}{b^2}\right)}$

C. c) $e^{-\frac{a^2}{2b^2}}$

D. d) $e^{-\frac{b^2}{2a^2}}$

Answer: C

 [Watch Video Solution](#)

98. $\lim_{n \rightarrow \infty} \sum_{r=1}^n \frac{r}{n^2 + n + 4}$ equals

A. 0

B. $1/3$

C. $1/2$

D. 1

Answer: C

 [Watch Video Solution](#)

99. The value of $\lim_{n \rightarrow \infty} \left(\sqrt{n^2 + n + 1} - \left[\sqrt{n^2 + n + 1} \right] \right)$ where $[.]$ denotes the greatest integer function is

A. 0

B. $1/2$

C. $2/3$

D. $1/4$

Answer: A::B



[Watch Video Solution](#)

100. $\lim_{x \rightarrow 1} \frac{\sin^2(x^3 + x^2 + x - 3)}{1 - \cos(x^2 - 4x + 3)}$ has the value equal to

A. 18

B. $9/2$

C. 9

D. None of these

Answer: A

 [Watch Video Solution](#)

101. The graph of the function $y = f(x)$ has a unique tangent at the point $(e^a, 0)$ through which the graph passes then $\lim_{(x \rightarrow e^a)} \frac{\log_e \{1 + 7f(x)\} - \sin f(x)}{3f(x)}$

A. 1

B. 2

C. 7

D. None of these

Answer: B

 [Watch Video Solution](#)

102. If $f(x) = \frac{3x^2 + ax + a + 1}{x^2 + x - 2}$, then which of the following can be correct?

- A. $\lim_{x \rightarrow 1} f(x)$ exists $\Rightarrow a = -2$
- B. $\lim_{x \rightarrow -2} f(x)$ exists $\Rightarrow a = 13$
- C. $\lim_{x \rightarrow 1} f(x) = 4/3$
- D. $\lim_{x \rightarrow -2} f(x) = -1/3$

Answer: A:C

 [Watch Video Solution](#)

103. Let $f(x) = \begin{cases} \frac{\tan^2 [x]}{x^2 - [x]^2} & \text{for } x > 0 \\ \frac{1}{\sqrt{|x|\cot|x|}} & \text{for } x < 0 \end{cases}$ where $[x]$ and $\{x\}$ denote

respectively the greatest integer less than equal to x and the fractional part of x , then

- A. (a) $\lim_{x \rightarrow 0^+} f(x) = 1$
- B. (b) $\lim_{x \rightarrow 0^-} f(x) = 1$

$$C. (c)\cot^{-1}\left(\lim_{x\rightarrow 0^-} f(x)\right)^2 = 1$$

D. (d)None of the above

Answer: A

 [Watch Video Solution](#)

104. Given that the derivative $f'(a)$ exists. Indicate which of the following statements(s) is/are always true?

$$A. f'(a) = \lim_{h \rightarrow a} \frac{f(h) - f(a)}{h - a}$$

$$B. f'(a) = \lim_{h \rightarrow 0} \frac{f(a) - f(a - h)}{h}$$

$$C. f'(a) = \lim_{t \rightarrow 0} \frac{f(a + 2t) - f(a)}{t}$$

$$D. f'(a) = \lim_{t \rightarrow 0} \frac{f(a + 2t) - t(a + t)}{2t}$$

Answer: A::C::D

 [Watch Video Solution](#)

105. Let $f(x) = \lim_{n \rightarrow \infty} \sum_{r=0}^{n-1} \frac{x}{(rx+1)\{(r+1)x+1\}}$. Then

A. $f(0) = 0$

B. $f(0) = x$

C. $f(0^+) = 1$

D. $f(0^-) = 1$

Answer: A

 [Watch Video Solution](#)

106. Find $f'(x)$ if $f(x) = e^{\{x^2\}}$

 [Watch Video Solution](#)

107. Find $\frac{dy}{dx}$ if $y = e^{5x}$

 [Watch Video Solution](#)

108. Let A be $n \times n$ matrix given by

$$A = \begin{bmatrix} a_{11} & a_{12} & a_{13} \dots \dots a_{1n} \\ a_{21} & a_{22} & a_{23} \dots \dots a_{2n} \\ \vdots & \vdots & \vdots \\ a_{n1} & a_{n2} & a_{n3} \dots \dots a_{nn} \end{bmatrix}$$

Such that each horizontal row is arithmetic progression and each vertical column is a geometrical progression. It is known that each column in geometric progression have the same common ratio. Given that

$$a_{24} = 1, a_{42} = \frac{1}{8} \text{ and } a_{43} = \frac{3}{16}$$

Let $S_n = \sum_{j=1}^n a_{4j}$, $\lim_{n \rightarrow \infty} \frac{S_n}{n^2}$ is equal to

A. $\frac{1}{4}$

B. $\frac{1}{8}$

C. $\frac{1}{16}$

D. $\frac{1}{32}$

Answer: D



Watch Video Solution

109. Let A be $n \times n$ matrix given by

$$A = \begin{bmatrix} a_{11} & a_{12} & a_{13} \cdot \dots \cdot a_{1n} \\ a_{21} & a_{22} & a_{23} \cdot \dots \cdot a_{2n} \\ \vdots & \vdots & \vdots \\ a_{n1} & a_{n2} & a_{n3} \cdot \dots \cdot a_{nn} \end{bmatrix}$$

Such that each horizontal row is arithmetic progression and each vertical column is a geometrical progression. It is known that each column in geometric progression have the same common ratio. Given that

$$a_{24} = 1, a_{42} = \frac{1}{8} \text{ and } a_{43} = \frac{3}{16}$$

Let d_i be the common difference of the elements in with row then $\sum_{i=1}^n d_i$

is

A. n

B. $\frac{1}{2} - \frac{1}{2^{n+1}}$

C. $1 - \frac{1}{2^n}$

D. $\frac{n+1}{2^n}$

Answer: C



Watch Video Solution

110. Let A be $n \times n$ matrix given by

$$A = \begin{bmatrix} a_{11} & a_{12} & a_{13} \dots a_{1n} \\ a_{21} & a_{22} & a_{23} \dots a_{2n} \\ \vdots & \vdots & \vdots \\ a_{n1} & a_{n2} & a_{n3} \dots a_{nn} \end{bmatrix}$$

Such that each horizontal row is arithmetic progression and each vertical column is a geometrical progression. It is known that each column in geometric progression have the same common ratio. Given that

$$a_{24} = 1, a_{42} = \frac{1}{8} \text{ and } a_{43} = \frac{3}{16}$$

The value of $\lim_{n \rightarrow \infty} \sum_{i=1}^n a_{ii}$ is equal to

A. $\frac{1}{4}$

B. $\frac{1}{2}$

C. 1

D. 2

Answer: D



Watch Video Solution

111. Find $\frac{dy}{dx}$ if $y = \frac{\sin x}{x}$



Watch Video Solution

112. Statement 1 $\lim_{x \rightarrow \pi/2} \frac{\sin(\cot^2 x)}{(\pi - 2x)^2} = \frac{1}{2}$

Statement 2: $\lim_{\theta \rightarrow 0} \frac{\sin \theta}{\theta} = 1$ and $\lim_{\theta \rightarrow 0} \frac{\tan \theta}{\theta} = 1$, where θ is measured

in radians.

- A. Statement 1 is true, Statement 2 is true, Statement 2 is correct explanation for statement 1.
- B. Statement 1 is true, Statement 2 is true, Statement 2 is not the correct explanation for statement 1.
- C. Statement 1 is true, Statement 2 is false
- D. Statement 1 is false, Statement 2 is true

Answer: A::B::D



Watch Video Solution

113. Statement 1 $\lim_{m \rightarrow \infty} \lim_{n \rightarrow \infty} \{\sin^{2m} n! \pi n\} = 0$, $n \in \mathbb{N}$, when x is rational.

Statement 2 When $n \rightarrow \infty$ and x is rational $n!x$ is integer.

- A. (a) Statement 1 is true, Statement 2 is true, Statement 2 is correct explanation for statement 1.
- B. (b) Statement 1 is true, Statement 2 is true, Statement 2 is not the correct explanation for statement 1.
- C. (c) Statement 1 is true, Statement 2 is false
- D. (d) Statement 1 is false, Statement 2 is true

Answer:



[Watch Video Solution](#)

114. Statement 1: If $\lim_{x \rightarrow 0} \left\{ f(x) + \frac{\sin x}{x} \right\}$ does not exist then $\lim_{x \rightarrow 0} f(x)$ does not exist.

Statement 2: $\lim_{x \rightarrow 0} \left(\frac{e^{1/x} - 1}{e^{1/x} + 1} \right)$ does not exist.

- A. Statement 1 is true, Statement 2 is true, Statement 2 is correct explanation for statement 1.
- B. Statement 1 is true, Statement 2 is true, Statement 2 is not the correct explanation for statement 1.
- C. Statement 1 is true, Statement 2 is false
- D. Statement 1 is false, Statement 2 is true

Answer: B



Watch Video Solution

115. Match the following

	Column I	Column II
(A)	$\lim_{x \rightarrow \infty} \left(\frac{x}{1+x} \right)^x$ equals	(p) e^2
(B)	$\lim_{x \rightarrow \infty} \left(\sin \frac{1}{x} + \cos \frac{1}{x} \right)^x$ equals	(q) $e^{-1/2}$
(C)	$\lim_{x \rightarrow 0} (\cos x)^{\cot^2 x}$ equals	(r) e
(D)	$\lim_{x \rightarrow 0} \left[\tan \left(\frac{\pi}{4} + x \right) \right]^{1/x}$ equals	(s) e^{-1}



Watch Video Solution

116. Match the following

	Column I	Column II
(A)	$\lim_{x \rightarrow \infty} (\sqrt{x} + \sqrt{x} - \sqrt{x} - \sqrt{x})$ equals	(p) -2
(B)	The value of the $\lim_{x \rightarrow 0} \frac{\sin 2x - 2 \tan x}{\ln(1+x^3)}$ is	(q) -1
(C)	$\lim_{x \rightarrow 0^+} (\ln \sin^3 x - \ln(x^4 + ex^3))$ equals	(r) 0
(D)	Let $\tan(2\pi \sin \theta) = \cot(2\pi \cos \theta)$, where $\theta \in R$ and $f(x) = (\sin \theta + \cos \theta)^x$. The value of $\lim_{x \rightarrow \infty} \left[\frac{2}{f(x)} \right]$ equals (here, $[\cdot]$ represents greatest integer function)	(s) 1



Watch Video Solution

117. If $(\lim)_{x \rightarrow 0} (x^{-3} \sin 3x + ax^{-2} + b)$ exists and is equal to 0, then

$$a = -3 \text{ and } b = \frac{9}{2} \qquad a = 3 \text{ and } b = \frac{9}{2} \qquad a = -3 \text{ and } b = -\frac{9}{2}$$
$$a = 3 \text{ and } b = -\frac{9}{2}$$

 [Watch Video Solution](#)

118. For a certain value of 'c' $\lim_{x \rightarrow \infty} [(x^5 + 7x^4 + 2)^c - x]$ is finite and non-zero. Then the value of c is :

 [Watch Video Solution](#)

119. If $\lim_{x \rightarrow 0} \int_0^x \frac{2t dt}{(e^x - 1 - x) \sqrt{\frac{2a}{3} - \frac{t}{2} + 104}} = \frac{1}{19}$, then $\frac{a}{2010}$

equals.....

 [Watch Video Solution](#)

120. Evaluate $\lim_{x \rightarrow 0^+} \log_{\sin x} \sin 2x$.

 Watch Video Solution

121.

$$\lim_{x \rightarrow \infty} \left(\sqrt{x^4 + ax^3 + 3x^2 + bx + 2} - \sqrt{x^4 + 2x^3 + cx^2 + 3x - d} \right) = 4$$

 Watch Video Solution

122. Let $f(x) = \lim_{m \rightarrow \infty} \left\{ \lim_{n \rightarrow \infty} \cos^{2m}(n!\pi x) \right\}$, where $x \in \mathbb{R}$. Then prove that $f(x) = \{1, \text{if } x \text{ is rational and } 0, \text{if } x \text{ is irrational}$

 Watch Video Solution

123. If $a_1 = 1$ and $a_{n+1} = \frac{4 + 3a_n}{3 + 2a_n}$, $n \geq 1$, show that $a_{n+2} \geq a_{n+1}$ and if a lim l as $n \rightarrow \infty$ the evaluate $\lim_{n \rightarrow \infty} a_n$

 Watch Video Solution

124. Let a_1, a_2, a_n be sequence of real numbers with $a_{n+1} = a_n + \sqrt{1 + a_n^2}$ and $a_0 = 0$. Prove that $\lim_{x \rightarrow \infty} \left(\frac{a_n}{2^{n-1}} \right) = \frac{2}{\pi}$

 [Watch Video Solution](#)

125. A square is inscribed in a circle of radius R , a circle is inscribed in this square then a square in this circle and so on n times. Find the limit of the sum of areas of all the squares as $n \rightarrow \infty$.

 [Watch Video Solution](#)

Exercise Single Option Correct Type Questions

1. $\lim_{x \rightarrow 0} \frac{\sin(\pi \cos^2(\tan(\sin x)))}{x^2}$ is equal to

A. π

B. $\frac{\pi}{4}$

C. $\frac{\pi}{2}$

D. None of these

Answer: A



Watch Video Solution

2. $\lim_{t \rightarrow 0} \frac{1 - (1 + t)^t}{\ln(1 + t) - t}$ is equal to

A. $\frac{1}{2}$

B. $-\frac{1}{2}$

C. 2

D. -2

Answer: C



Watch Video Solution

3. If $I_1 = \lim_{x \rightarrow \infty} (\tan^{-1} \pi x - \tan^{-1} x) \cos x$ and $I_2 = \lim_{x \rightarrow 0} (\tan^{-1} \pi x - \tan^{-1} x) \cos x$ then (I_1, I_2) is

A. $(0, 0)$

B. $(0, 1)$

C. $(1, 0)$

D. None of the above

Answer: A



Watch Video Solution

4. If $f(x) = 0$ is a quadratic equation such that $f(-\pi) = f(\pi) = 0$ and

$f\left(\frac{\pi}{2}\right) = -\frac{3\pi^2}{4}$, then $\lim_{x \rightarrow -\pi} \frac{f(x)}{\sin(\sin x)}$ is equal to (a) 0 (b) π (c) 2π

(d) none of these

A. 0

B. π

C. 2π

D. None of these

Answer: C



[Watch Video Solution](#)

5. $\lim_{x \rightarrow 0} \frac{{}^3\sqrt{1 + \sin^2 x} - {}^4\sqrt{1 - 2 \tan x}}{\sin x + \tan^2 x}$ is equal to:

A. -1

B. 1

C. $\frac{1}{2}$

D. $-\frac{1}{2}$

Answer: C



[Watch Video Solution](#)

6. If $x_{n+1} = \sqrt{\frac{1+x_n}{2}}$ and $|x_0| < 1, n \in \mathbb{W}$ then $\lim_{n \rightarrow \infty} \frac{\sqrt{1-x_0^2}}{x_1 x_2 x_3 \dots x_{n+1}}$
=

A. -1

B. 1

C. $\cos^{-1}(x_0 + 1)$

D. $\cos^{-1}(x_0)$

Answer: D

 [Watch Video Solution](#)

7. For $n \in \mathbb{N}$, let

$$f_n(x) = \tan \frac{x}{2} (1 + \sec x)(1 + \sec 2x)(1 + \sec 4x) \dots (1 + \sec 2^n x),$$

the $\lim_{x \rightarrow 0} \frac{f_n(x)}{2x}$ is equal to :

A. 0

B. 2^n

C. 2^{n-1}

D. 2^{n+1}

Answer: C



Watch Video Solution

8. Let $f(x)$ be a real valued function defined for all $x \geq 1$, satisfying

$$f(1) = 1 \text{ and } f'(x) = \frac{1}{x^2 + f(x)}, \text{ then } \lim_{x \rightarrow \infty} f(x)$$

A. (a) doesn't exist

B. exists and less than $\frac{\pi}{4}$

C. exists and less than $1 + \frac{\pi}{4}$

D. exists and equal to 0

Answer: C



Watch Video Solution

9. The quadratic equation whose roots are the minimum value of $\sin^2 \theta - \sin \theta + \frac{1}{2}$ and $\lim_{x \rightarrow \infty} \sqrt{(x+1)(x+2)} - x$ is

A. (a) $3x^2 - 7x + 3 = 0$

B. (b) $8x^2 - 14x + 3 = 0$

C. (c) $x^2 - 7x + 3 = 0$

D. (d) $2x^2 - 8x + 3 = 0$

Answer: B



Watch Video Solution

10. If $x_1 = \sqrt{3}$ and $x_{n+1} = \frac{x_n}{1 + \sqrt{1 + x_n^2}}$, $\forall n \in N$ then $\lim_{n \rightarrow \infty} 2^n x_n$

is equal to

A. $\frac{3}{2\pi}$

B. $\frac{2}{3\pi}$

C. $\frac{3\pi}{3}$

D. $\frac{3\pi}{2}$

Answer: C



Watch Video Solution

11. $\lim_{x \rightarrow a^-} \frac{\sqrt{x-b} - \sqrt{a-b}}{(x^2 - a^2)}, (a > b)$ is

A. $\frac{1}{4a}$

B. $\frac{1}{a\sqrt{a-b}}$

C. $\frac{1}{2a\sqrt{a-b}}$

D. $\frac{1}{4a\sqrt{a-b}}$

Answer: D



Watch Video Solution

12. $\lim_{n \rightarrow \infty} (\sin^n 1 + \cos^n 1)^n$ is equal to

 [Watch Video Solution](#)

13. The value of $\lim_{n \rightarrow \infty} \sum_{k=1}^n \frac{n-k}{n^2} \cos\left(\frac{4k}{n}\right)$ equals to

A. (a) $\frac{1}{4} \sin 4 + \frac{1}{15} \cos 4 - \frac{1}{16}$

B. (b) $\frac{1}{4} \sin 4 - \frac{1}{16} \cos 4 + \frac{1}{16}$

C. (c) $\frac{1}{16} (1 - \sin 4)$

D. (d) $\frac{1}{16} (1 - \cos 4)$

Answer: D

 [Watch Video Solution](#)

14. about to only mathematics

A. 6

B. 7

C. 8

D. 9

Answer: A::B::D



Watch Video Solution

15. $\int_{-1}^2 \left[\frac{[x]}{1+x^2} \right] dx$, where $[.]$ denotes the greatest integer function, is equal to

A. 0

B. 1

C. $\cot 1$

D. not defined

Answer: A::B::D



Watch Video Solution

16. If α and β are roots of $x^2 - \left(\sqrt{1 - \cos 2\theta}\right)x + \theta = 0$, where $0 < \theta < \frac{\pi}{2}$. Then $\lim_{\theta \rightarrow 0^+} \left(\frac{1}{\alpha} + \frac{1}{\beta}\right)$ is

A. (a) $\frac{1}{\sqrt{2}}$

B. (b) $-\sqrt{2}$

C. (c) $\sqrt{2}$

D. (d) None of these

Answer: C

 [Watch Video Solution](#)

17. If $f(x) = \frac{1}{3} \left(f(x+1) + \frac{5}{f(x+2)} \right)$ and $f(x) > 0, \forall x \in \mathbb{R}$, then

$\lim_{x \rightarrow \infty} f(x)$ is

A. 0

B. $\sqrt{\frac{2}{5}}$

C. $\sqrt{\frac{5}{2}}$

D. ∞

Answer: C



Watch Video Solution

18. Let $f: (1, 2) \rightarrow \mathbb{R}$ satisfies the inequality

$$\frac{\cos(2x - 4) - 33}{2} < f(x) < \frac{x^2|4x - 8|}{x - 2} \quad \forall x \in (1, 2). \quad \text{Then find}$$

$$\lim_{x \rightarrow 2^-} f(x).$$

A. 16

B. -16

C. does'nt exist

D. θ

Answer: B



Watch Video Solution

19. Let $f(x)$ be polynomial of degree 4 with roots 1,2,3,4 and leading coefficient 1 and $g(x)$ be the polynomial of degree 4 with roots 1, $\frac{1}{2}$, $\frac{1}{3}$ and $\frac{1}{4}$ with leading coefficient 1. Then $\lim_{x \rightarrow 1} \frac{f(x)}{g(x)}$ equals

A. (a) $\frac{1}{24}$

B. (b) -24

C. (c) $\frac{1}{12}$

D. (d) $-\frac{1}{12}$

Answer: B

 [Watch Video Solution](#)

20. $\lim_{x \rightarrow \frac{\pi}{4}} \frac{4\sqrt{2} - (\cos x + \sin x)^5}{1 - \sin 2x}$ is equal to

A. $\sqrt{2}$

B. $3\sqrt{5}$

C. $5\sqrt{2}$

D. $-5\sqrt{2}$

Answer: C



Watch Video Solution

21. If $\lim_{n \rightarrow \infty} \frac{n \cdot 3^n}{n(x-2)^n + n \cdot 3^{n+1} - 3^n} = \frac{1}{3}$, then the range of x is

(where $n \in \mathbb{N}$)

A. 3

B. 4

C. 5

D. infinite

Answer: C



Watch Video Solution

22. Let $f(x) = \lim_{n \rightarrow \infty} \frac{1}{\left(\frac{3}{\pi} \tan^{-1} 2x\right)^{2n} + 5}$. Then the set of values of x

for which $f(x) = 0$ is

A. $|2x| > \sqrt{3}$

B. $|2x| < \sqrt{3}$

C. $|2x| \geq \sqrt{3}$

D. $|2x| \leq \sqrt{3}$

Answer: A::B::D



Watch Video Solution

23. Find the integral value of n for which

$(\lim)_{x \rightarrow 0} \frac{\cos^2 x - \cos x - e^x \cos x + e^x - \frac{x^3}{2}}{x^n}$ is a finite nonzero number

A. 2

B. 3

C. 4

D. None of these

Answer: C



Watch Video Solution

24. Find $\frac{dy}{dx}$ if $x^7 - e^x = \sin y$



Watch Video Solution

25. $\lim_{x \rightarrow \frac{\pi}{2}} \frac{\left[\frac{x}{2} \right]}{\log_e(\sin x)}$ ($[.]$ denotes greatest integer function)

A. 0

B. 1

C. -1

D. Doesn't exist

Answer: A::B::D



Watch Video Solution

26. Let $a_1 = 1$, $a_n = n(a_{n-1} + 1)$ for $n = 2, 3, \dots$ where

$$P_n = \left(1 + \frac{1}{a_1}\right) \left(1 + \frac{1}{a_2}\right) \left(1 + \frac{1}{a_3}\right) \dots \left(1 + \frac{1}{a_n}\right) \quad \text{then}$$

$$\lim_{n \rightarrow \infty} P_n =$$

A. e

B. $\frac{e}{2}$

C. $2e$

D. $3e$

Answer: A::B::D



Watch Video Solution

27. If $f(x + y) = f(x) + f(y)$ for $x, y \in R$ and $f(1) = 1$, then find the

value of $\lim_{x \rightarrow 0} \frac{2^{f(\tan x)} - 2^{f(\sin x)}}{x^2 \cdot f(\sin x)}$

A. $\log 2$

B. $\log 4$

C. $\log \sqrt{2}$

D. $\log 8$

Answer: C



Watch Video Solution

28.

Evaluate

$$\lim_{n \rightarrow \infty} n^{-n^2} [(n + 2^0)(n + 2^{-1})(n + 2^{-2}) \dots (n + 2^{-n+1})]^n.$$

A. e

B. e^2

C. e^3

D. e^4

Answer: B

 [Watch Video Solution](#)

29. If $f(x) = \begin{cases} \frac{\sin[x]}{[x]}, & f \text{ or } [x] \neq 0 \\ 0, & f \text{ or } [x] = 0 \end{cases}$, where $[x]$ denotes the greatest integer less than or equal to x , then $(\lim)_{x \rightarrow 0} f(x)$ is (a) 1 (b) 0 (c) -1 (d) none of these

A. 1

B. 0

C. -1

D. does

Answer: D

 [Watch Video Solution](#)

30. Evaluate: $\left(\lim \right)_{x \rightarrow 2} \frac{x^3 - 6x^2 + 11x - 6}{x^2 - 6x + 8}$

A. 3

B. 2

C. 1

D. 4

Answer: A::B::D



Watch Video Solution

31. Let r^{th} term t_r of a series if given by $t_c = \frac{r}{1 + r^2 + r^4}$. Then

$\lim_{n \rightarrow \infty} \sum_{r=1}^n t_r$ is equal to :

A. 2

B. $\frac{1}{2}$

C. 1

D. $\frac{1}{4}$

Answer: B



Watch Video Solution

32. The value of $\lim_{n \rightarrow \infty} \sum_{r=1}^n \cot^{-1} \left(\frac{r^3 - r + \frac{1}{r}}{2} \right)$ is

A. A. π

B. B. $\frac{\pi}{4}$

C. C. $\frac{\pi}{2}$

D. D. π

Answer: C



Watch Video Solution

33. Let $x \tan \alpha + y \sin \alpha = \alpha$ and $x \alpha \operatorname{cosec} \alpha + y \cos \alpha = 1$ be two variable straight lines, α being the parameter. Let P be the point of

intersection of the lines. In the limiting position when $a \rightarrow 0$, the point

P lies on the line :

A. $(2, -1)$

B. $(2, 1)$

C. $(-2, 1)$

D. $(-2, -1)$

Answer: A::B::D



Watch Video Solution

34. The polynomial of least degree such that

$$\lim_{x \rightarrow 0} \left(1 + \frac{x^2 + f(x)}{x^2} \right)^{1/x} = e^2 \text{ is}$$

A. x^2

B. $x^3 + 2x^2$

C. $-x^2 + 2x^3$

D. None of these

Answer: C



Watch Video Solution

35. If n is a non zero integer and $[*]$ denotes the greatest integer function

then $\lim_{x \rightarrow 0} \left[n \frac{\sin x}{x} \right] + \lim_{x \rightarrow 0} \left[n \frac{\tan x}{x} \right]$ equals

A. $n + 1$

B. $2n$

C. $n - 1$

D. $2n - 1$

Answer: D



Watch Video Solution

36. The value of $\lim_{x \rightarrow a} [\sqrt{2-x} + \sqrt{1+x}]$, where $a \in \left[0, \frac{1}{2}\right]$ and $[\cdot]$

denotes the greatest integer function is:

A. 1

B. 2

C. 3

D. 4

Answer: B



Watch Video Solution

37. The value of

$$\lim_{x \rightarrow 0^+} \frac{-1 + \sqrt{(\tan x - \sin x) + \sqrt{(\tan x - \sin x) + \sqrt{(\tan x - \sin x) + \dots}}}}{-1 + \sqrt{x^3 + \sqrt{x^3 + \sqrt{x^3 + \dots}}}}$$

is

A. a) $\frac{1}{2}$

B. b) $\frac{1}{4}$

C. c) $\frac{1}{8}$

D. d) 1

Answer: A::B::D



Watch Video Solution

38. Evaluate: $\lim_{\theta \rightarrow 0} \frac{\cos^2(1 - \cos^2(1 - \cos^2 \dots (1 - \cos^2(\theta))))}{\sin\left(\pi \frac{\sqrt{\theta+4}-2}{\theta}\right)}$

A. (a) 2

B. (b) $\sqrt{2}$

C. (c) $\frac{1}{2}$

D. (d) $\frac{1}{\sqrt{2}}$

Answer: B



Watch Video Solution

39. The value of $\lim_{n \rightarrow \infty} a_n$ when $a_{n+1} = \sqrt{2 + a_n}$, $n = 1, 2, 3, \dots$ is

A. 1

B. 2

C. 3

D. 4

Answer: B



[Watch Video Solution](#)

Exercise More Than One Correct Option Type Questions

1. If $\lim_{x \rightarrow \infty} 4x \left(\frac{\pi}{4} - \tan^{-1} \left(\frac{x+1}{x+2} \right) \right) = y^2 + 4y + 5$ then y can be equal to

A. 1

B. -1

C. -4

D. -3

Answer: B::D



Watch Video Solution

2. $\lim_{x \rightarrow 0} \frac{1 - \cos(x^2)}{x^3(4^x - 1)}$ is equal to:

A. (a) $\frac{1}{2} \ln 2$

B. (b) $\ln 2$

C. (c) $\ln 4$

D. (d) $1 - \frac{1}{2} \ln\left(\frac{e^2}{4}\right)$

Answer: null



Watch Video Solution

3. If $f(x) = e^{[\cot x]}$, where $[y]$ represents the greatest integer less than or equal to y then

A. $\lim_{x \rightarrow \frac{\pi}{2}^+} f(x) = 1$

B. $\lim_{x \rightarrow \frac{\pi}{2}^+} f(x) = \frac{1}{e}$

C. $\lim_{x \rightarrow \frac{\pi}{2}^-} f(x) = \frac{1}{e}$

D. $\lim_{x \rightarrow \frac{\pi}{2}^-} f(x) = 1$

Answer: B::D



Watch Video Solution

4. $\lim_{x \rightarrow 0} \left[m \frac{\sin x}{x} \right]$ is equal to (where $m \in I$ and $[.]$ denotes greatest integer function)

A. m if $m < 0$

B. $m - 1$ if $m > 0$

C. $m - 1$, if $m < 0$

D. m if $m > 0$

Answer: A::B

 [Watch Video Solution](#)

5. If $(\lim)_{x \rightarrow 0} (1 + ax + bx^2)^{\frac{2}{x}} = e^3$, then find the value of a and b .

A. $a = 3, b = 0$

B. $a = \frac{3}{2}, b = 1$

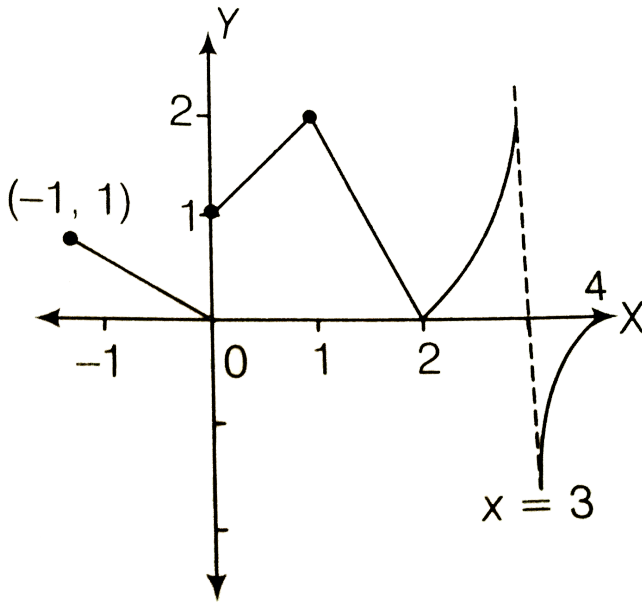
C. $a = \frac{3}{2}, b = 4$

D. $a = 2, b = 3$

Answer: B::C

 [Watch Video Solution](#)

6. The graph of the function $y = f(x)$ is shown in the adjacent figure then correct statement is



- A. $\lim_{x \rightarrow 0^+} f(x) = 1$
- B. $\lim_{x \rightarrow 1} f(x) = 2$
- C. $\lim_{x \rightarrow 3} f(x) =$ does not exist
- D. $\lim_{x \rightarrow 4} f(x) = 0$

Answer: A::B::C::D



Watch Video Solution

7. Find $\lim_{x \rightarrow 0} \frac{\cot^{-1}\left(\frac{1}{x}\right)}{x}$

 [Watch Video Solution](#)

8. If $l = \lim_{x \rightarrow \infty} \left(\frac{x+1}{x-1}\right)^x$, the value of $\{l\}$ and $[l]$ are

A. 7

B. $7 - e^2$

C. -7

D. $e^2 - 7$

Answer: A::D

 [Watch Video Solution](#)

9. If $f(x) = \begin{cases} \frac{\sin[x]}{[x]}, & f \text{ or } [x] \neq 0, \\ 0, & f \text{ or } [x] = 0, \end{cases}$ where $[x]$ denotes the greatest integer less than or equal to x , then $(\lim)_{x \rightarrow 0} f(x)$ is (a) 1 (b) 0 (c) -1 (d) none of these

A. $\lim_{x \rightarrow 0^-} f(x) = \sin 1$

B. $\lim_{x \rightarrow 0^+} f(x) = 0$

C. limit does not exist at $x = 0$

D. limit exists at $x = 0$

Answer: A::B::C::D

 [Watch Video Solution](#)

10. $\lim_{x \rightarrow c} f(x)$ does not exist when

where $[.]$ and $\{.\}$ denotes greatest integer and fractional part of x

A. $f(x) = [x] - [2x - 1], c = 3$

B. $f(x) = [x] - x, c = 1$

C. $f(x) = \{x\}^2 - \{-x\}^2, c = 0$

D. $f(x) = \frac{\tan(\operatorname{sgn}x)}{(\operatorname{sgn}x)}, c = 0$

Answer: B::C



Watch Video Solution

11. Identify the correct statement.

A. $\lim_{x \rightarrow \infty} \left[\sum_{r=1}^n \frac{1}{2^r} \right] = 1$

B. If $f(x) = (x - 1)\{x\}$, where $[.]$ and $\{.\}$ denotes greatest integer function and fractional part of x respectively, the limit of $f(x)$ does not exist at $x = 1$

C. $\lim_{x \rightarrow 0^+} \left[\frac{\tan x}{x} \right] = 1$

D. $\left[\lim_{x \rightarrow 0^+} \frac{\tan x}{x} \right] = 1$

Answer: C::D



Watch Video Solution

12. For $a > 0$, let $l = \lim_{x \rightarrow \frac{\pi}{2}} \frac{a^{\cot x} - a^{\cos x}}{\cot x - \cos x}$ and $m = \lim_{x \rightarrow -\infty} \left(\sqrt{x^2 + ax} \right) - \left(\sqrt{x^2 - ax} \right)$ then solve it

 [Watch Video Solution](#)

13. Consider the function $f(x) = \left(\frac{ax + 1}{bx + 2} \right)^x$, where $a, b > 0$, the

$\lim_{x \rightarrow \infty} f(x)$ is

A. exists for all values of a and b

B. zero for $a < b$

C. non-existent for $a > b$

D. $e^{-(1/a)}$ or $e^{-(1/b)}$ if $a = b$

Answer: B::C::D

 [Watch Video Solution](#)

14. If $f(x) = \frac{x \cdot 2^x - x}{1 - \cos x}$ and $g(x) = 2^x \cdot \sin\left(\frac{\log 2}{2^x}\right)$ then

A. $\lim_{x \rightarrow 0} f(x) = \log 2$

B. $\lim_{x \rightarrow \infty} g(x) = \log 4$

C. $\lim_{x \rightarrow 0} f(x) = \log 4$

D. $\lim_{x \rightarrow \infty} g(x) = \log 2$

Answer: C::D



Watch Video Solution

15. If $\lim_{x \rightarrow 3} \frac{x^3 + cx^2 + 5x + 12}{x^2 - 7x + 12} = l$ (finite real number), then

A. $l = 4$

B. $c = -6$

C. $c = 4$

D. $x \in \mathbb{R}$

Answer: A::B



Watch Video Solution

Exercise Passage Based Questions

1. If $\lim_{x \rightarrow a} f(x) = 1$ and $\lim_{x \rightarrow a} g(x) = \infty$ then

$$\lim_{x \rightarrow a} \{f(x)\}^{g(x)} = e^{\lim_{x \rightarrow a} (f(x) - 1)g(x)}$$

$\lim_{x \rightarrow 0} \left(\frac{\sin x}{x} \right)^{\frac{\sin x}{x - \sin x}}$ is equal to

A. (a) $1/e$

B. (b) $-1/e$

C. (c) e

D. (d) $-e$

Answer: A



Watch Video Solution

2. If $\lim_{x \rightarrow a} f(x) = 1$ and $\lim_{x \rightarrow a} g(x) = \infty$ then

$$\lim_{x \rightarrow a} \{f(x)\}^{g(x)} = e^{\lim_{x \rightarrow a} (f(x) - 1)g(x)}$$

$$\lim_{x \rightarrow 0} \left(\frac{x - 1 + \cos x}{x} \right)^{\frac{1}{x}}$$

is

equal to

A. (a) $e^{1/2}$

B. (b) $e^{-1/2}$

C. (c) e^1

D. (d) $\frac{1}{e}$

Answer: B

 **Watch Video Solution**

3. If $\lim_{x \rightarrow a} f(x) = 1$ and $\lim_{x \rightarrow a} g(x) = \infty$ then

$$\lim_{x \rightarrow a} \{f(x)\}^{g(x)} = e^{\lim_{x \rightarrow a} (f(x) - 1)g(x)}$$

$$\lim_{x \rightarrow 0} \left(\frac{a^x + b^x + c^x}{3} \right)^{\frac{2}{x}}$$

is

equal to

A. $a^{2/3} + b^{2/3} + c^{2/3}$

B. abc

C. $(abc)^{2/3}$

D. 1

Answer: C

 [Watch Video Solution](#)

4. Find $\frac{dy}{dx}$ if $2x - 3y = \tan x$

 [Watch Video Solution](#)

5. Find $|A|$ if $A = \begin{vmatrix} x^2 & 2x \\ x^4 & 5x \end{vmatrix}$

 [Watch Video Solution](#)

6. Let $f(x) = \lim_{n \rightarrow \infty} \left(\cos \sqrt{\frac{x}{n}} \right)^n$, $g(x) = \lim_{n \rightarrow \infty} (1 - x + x\sqrt[n]{e})^n$

Now consider the function $y = h(x)$ where $h(x) = \tan^{-1}(g^{-1}f^{-1}(x))$.

Range of the function $y = h(x)$ is

A. $\left(0, \frac{\pi}{2}\right)$

B. $\left(-\frac{\pi}{2}, 0\right)$

C. R

D. $\left(-\frac{\pi}{2}, \frac{\pi}{2}\right)$

Answer: D



[Watch Video Solution](#)

7. How many 4 digits numbers can be formed from the digits 1 to 10 if not digit can be repeated.



[Watch Video Solution](#)

8. Find $\frac{dy}{dx}$ if $2y = e^y - 2x$

 [Watch Video Solution](#)

9. Let $f: N \rightarrow R$ and $g: N \rightarrow R$ be two functions and

$$f(1) = 0.8, g(1) = 0.6,$$

$$f(n+1) = f(n)\cos(g(n)) - g(n)\sin(g(n)) \text{ and } g(n+1) = f(n)\sin(g(n))$$

for $n \geq 1$. $\lim_{n \rightarrow \infty} f(n)$ is equal to

A. (a) -1

B. (b) 0

C. (c) 1

D. (d) does not exist

Answer: A

 [Watch Video Solution](#)

10. Let $f: N \rightarrow R$ and $g: N \rightarrow R$ be two functions and $f(1) = 0.8, g(1) = 0.6, f(n+1) = f(n)\cos(g(n)) - g(n)\sin(g(n))$ and $g(n+1) = f(n)\sin(g(n)) + g(n)\cos(g(n))$ for $n \geq 1$.

$\lim_{n \rightarrow \infty} f(n)$ is equal to

A. -1

B. 0

C. 1

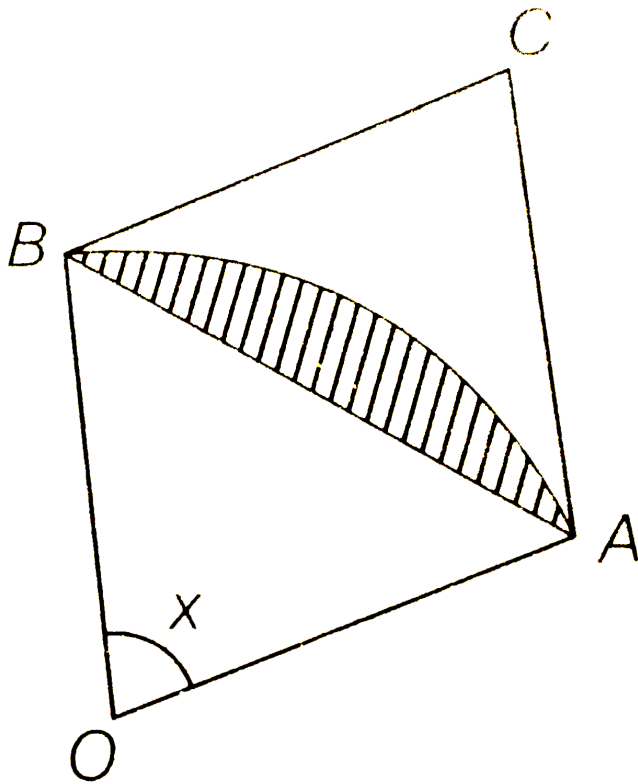
D. does not exist

Answer: B



[Watch Video Solution](#)

11. A circle arc of radius 1 subtends an angle of x radians as shown in figure. The centre of the circle is O and the point C is the intersection of two tangent lines at A and B . Let $T(x)$ be the area of $\triangle ABC$ and $S(x)$ be the area of shaded region.



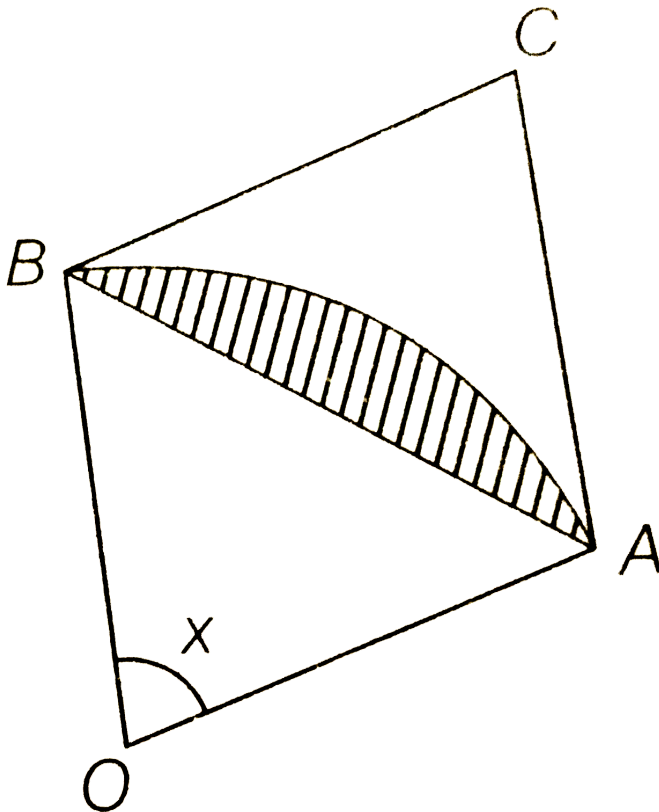
$$\lim_{x \rightarrow 0} \frac{T(x)}{x^3} \text{ is}$$

- A. $\frac{1}{2}$
- B. $\frac{1}{3}$
- C. $\frac{1}{4}$
- D. $\frac{1}{8}$

Answer: D



12. A circle arc of radius 1 subtends an angle of x radians as shown in figure. The centre of the circle is O and the point C is the intersection of two tangent lines at A and B . Let $T(x)$ be the area of $\triangle ABC$ and $S(x)$ be the area of shaded region.



$$\lim_{x \rightarrow 0} \frac{S(x)}{x} \text{ is}$$

A. 0

B. $\frac{1}{2}$

C. 1

D. None of these

Answer: A



Watch Video Solution

13. A circular arc of radius 1 subtends an angle of x radians $0 < x < \frac{\pi}{2}$ as shown in the figure. The point r is the intersection of the two tangent lines at P and Q . Let $T(x)$ be the area of triangle PQR and $S(x)$ be the area of the shaded region then find $T(x) \& S(x) \& \lim_{x \rightarrow 0} \frac{T(x)}{S(x)}$

A. $\frac{1}{4}$

B. $\frac{3}{4}$

C. $\frac{3}{2}$

D. 0

Answer: C



Watch Video Solution

Exercise Matching Type Questions

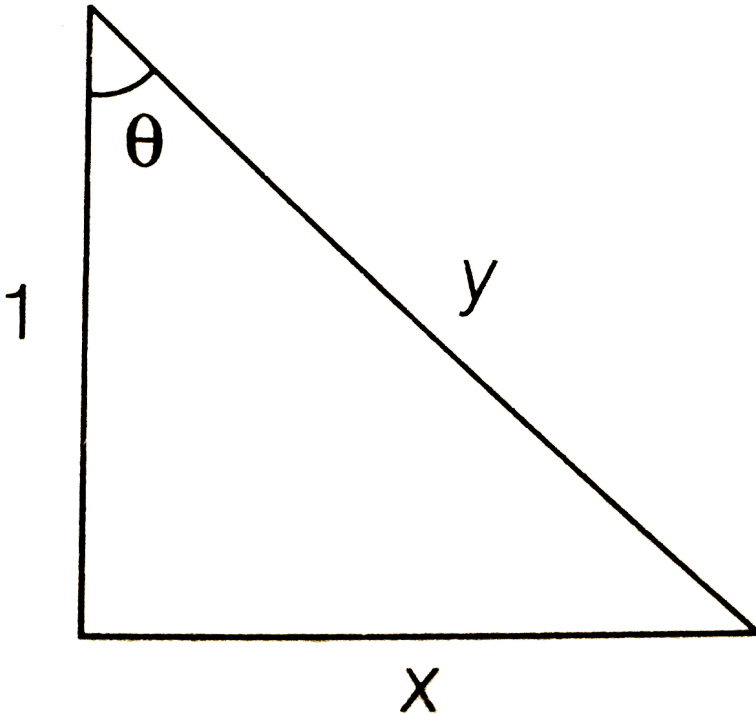
1. Match the statements of Column I with values of Column II.

	Column I		Column II
(A)	$\lim_{x \rightarrow \frac{\pi^+}{2}} \tan^{-1}(\tan x)$	(p)	0
(B)	$\lim_{n \rightarrow \infty} \left[\sum_{r=1}^n \frac{1}{2^r} \right]$ ([\cdot] denotes the greatest integer function)	(q)	Doesn't exist
(C)	$\lim_{x \rightarrow \infty} \sec^{-1} \left(\frac{x}{x+1} \right)$	(r)	$-\frac{\pi}{2}$
(D)	$\lim_{x \rightarrow \frac{\pi}{2}} \frac{\cos x}{(1 - \sin x)^{2/3}}$	(s)	$\frac{\pi}{2}$



Watch Video Solution

2. A right angled triangle has legs 1 and x . The hypotenuse is y and angle opposite to the side x is θ . Shown as



	Column I		Column II
(A)	$\lim_{\theta \rightarrow \frac{\pi}{2}} (\sqrt{y} - \sqrt{x})$	(p)	0
(B)	$\lim_{\theta \rightarrow \frac{\pi}{2}} (y - x)$	(q)	$\frac{1}{2}$
(C)	$\lim_{\theta \rightarrow \frac{\pi}{2}} (y^2 - x^2)$	(r)	1
(D)	$\lim_{\theta \rightarrow \frac{\pi}{2}} (y^3 - x^3)$	(s)	∞



3. Find $\frac{dy}{dx}$ if $2y = x - \cos 2x$

 [Watch Video Solution](#)

Matching Type Questions

1. Find $\frac{dy}{dx}$ if $1 - y = x$

 [Watch Video Solution](#)

Exercise Single Integer Answer Type Questions

1. Let $L = \lim_{x \rightarrow \infty} \left(x \log x + 2x \cdot \log \sin \left(\frac{1}{\sqrt{x}} \right) \right)$, then value of $\left(-\frac{2}{L} \right)$ is

 [Watch Video Solution](#)

2. For $n \in \mathbb{N}$ let x_n be defined as $\left(1 + \frac{1}{n}\right)^{(n+x_n)} = e$ then $\lim_{n \rightarrow \infty} (2x_n)$ equals.....

 [Watch Video Solution](#)

3. Let $f(x) = x^4 - x^3$ then find $f'(2)$

 [Watch Video Solution](#)

4. If the arithmetic mean of the product of all pairs of positive integers whose sum is n is A_n then $\lim_{n \rightarrow \infty} \frac{n^2}{A_n}$ equals to

 [Watch Video Solution](#)

5. The value of $\lim_{n \rightarrow \infty} \sum_{k=1}^n \frac{6^k}{(3^k - 2^k)(3^{k+1} - 2^{k+1})}$ is equal to

 [Watch Video Solution](#)

6. The value of $\lim_{x \rightarrow \frac{\pi}{2}} \sqrt{\frac{\tan x - \sin\{\tan^{-1}(\tan x)\}}{\tan x + \cos^2(\tan x)}}$ is

 [Watch Video Solution](#)

7. Express in the form of complex number if $z = i^5$

 [Watch Video Solution](#)

8. If the two $AB: \left(\int_0^{2t} \left(\frac{\sin x}{x} + 1 \right) dx \right) x + y = 3t$ and

$AC: 2tx + y = 0$ intersect at a point A the x-coordinate of a point A as $t \rightarrow 0$, is equal to $\frac{p}{q}$ (p and q are in their lowest form) the $(p + q)$ is

.....

 [Watch Video Solution](#)

9. Find $\frac{dy}{dx}$ if $e^x = \log y - \sin x$

 [Watch Video Solution](#)

10. If $L = \lim_{x \rightarrow \frac{\pi}{2}^+} \frac{\cos \tan^{-1}(\tan x)}{x - \pi/2}$ then $\cos(2\pi L)$ is

 [Watch Video Solution](#)

11. Number of solutions of the equation $\csc \theta = k$ in $[0, \pi]$ where

$$k = \lim_{n \rightarrow \infty} \prod_{r=2}^n \left(\frac{r^3 - 1}{r^3 + 1} \right) \text{ is } \text{---}$$

 [Watch Video Solution](#)

12. If C satisfies the equation $\lim_{x \rightarrow \infty} \left(\frac{x+c}{x-c} \right)^x = 4$ then $\left| \frac{e^c}{2} \right|$ is

 [Watch Video Solution](#)

13. If $\lim_{x \rightarrow -\infty} \frac{(3x^4 + 2x^2) \cdot \sin\left(\frac{1}{x}\right) + |x|^3 + 5}{|x|^3 + |x^2| + |x| + 1} = k$ then $\left|\frac{k}{2}\right|$ is

 [Watch Video Solution](#)

14. If $f(x) = \lim_{t \rightarrow 0} \left[\frac{2x}{\pi} \cdot \tan^{-1}\left(\frac{x}{t^2}\right) \right]$, then $f(1)$ is

 [Watch Video Solution](#)

15. Differentiate $x^3 - 5 \sin x$ w.r.t x

 [Watch Video Solution](#)

16. If $l = \lim_{x \rightarrow 1^+} 2^{-2^{\frac{1}{1-x}}}$ and $m = \lim_{x \rightarrow 1^+} \frac{x \sin(x - [x])}{x - 1}$ (where $[.]$ denotes greatest integer function). Then $(l + m)$ is

 [Watch Video Solution](#)

17. The value of $\lim_{x \rightarrow 0} \left[\frac{\sin x \cdot \tan x}{x^2} \right]$ is

(where $[.]$ denotes greatest integer function).

 [Watch Video Solution](#)

18. $\lim_{n \rightarrow \infty} \sum_{r=1}^n \frac{r}{1 \times 3 \times 5 \times 7 \times 9 \times \dots \times (2r+1)}$ is equal to

 [Watch Video Solution](#)

19. Find $\frac{dy}{dx}$ if $y = \sin^4 x$

 [Watch Video Solution](#)

20. If $f(x + y + z) = f(x) + f(y) + f(z)$ with $f(1) = 1$ and $f(2) = 2$

and $x, y, z \in \mathbb{R}$ the value of $\lim_{x \rightarrow \infty} \sum_{r=1}^n \frac{(4r)f(3r)}{n^3}$ is

 [Watch Video Solution](#)

21. If $\lim_{n \rightarrow \infty} \frac{n \cdot 3^n}{n(x-2)^n + n \cdot 3^{n+1} - 3^n} = \frac{1}{3}$, then the range of x is
(where $n \in \mathbb{N}$)

 [Watch Video Solution](#)

22. The value of $\lim_{x \rightarrow \infty} \left(((x-1)(x-2)(x+3)(x+10)(x+15))^{\frac{1}{5}} - x \right)$ is

 [Watch Video Solution](#)

23. If $\lim_{x \rightarrow \infty} ([f(x)] + x^2)\{f(x)\} = k$, where $f(x) = \frac{\tan x}{x}$ and $[\cdot]$, $\{\cdot\}$ denote greatest integer and fractional part of x respectively, the value of $[k/e]$ is

 [Watch Video Solution](#)

24. Let $p(x)$ be a polynomial of degree 4 having extremum at $x = 1, 2$ and $\lim_{x \rightarrow 0} \left(1 + \frac{p(x)}{x^2}\right) = 2$. Then find the value of $p(2)$.

 [Watch Video Solution](#)

25. If α is the number of solution of $|x| = \log(x - [x])$, (where $[.]$ denotes greatest integer function) and

$\lim_{x \rightarrow \alpha} \frac{xe^{ax} - b \sin x}{x^3}$ is finite, the value of $(a - b)$ is

 [Watch Video Solution](#)

26. Suppose $x_1 = \tan^{-1} 2 > x_2 > x_3 > \dots$ are the real numbers satisfying $\sin(x_{n+1} - x_n) + 2^{-(n+1)} \cdot \sin x_n \cdot \sin x_{n+1}$ for all $n > 1$ and $l = \lim_{x \rightarrow \infty} x_n$, the value of $[4l]$ is...where $[t]$ denotes greatest integer function.

 [Watch Video Solution](#)

1. Let $\alpha, \beta \in \mathbb{R}$ such that $\lim_{x \rightarrow 0} \frac{x^2 \sin(\beta x)}{\alpha x - \sin x} = 1$. Then $6(\alpha + \beta)$ equals

 [Watch Video Solution](#)

2. about to only mathematics

 [Watch Video Solution](#)

3. Let $f: \mathbb{R} \rightarrow \mathbb{R}$ be a continuous odd function, which vanishes exactly at one point and $f(1) = \frac{1}{2}$. Suppose that

$F(x) = \int_{-1}^x f(t) dt$ for all $x \in [-1, 2]$ and $G(x) = \int_{-1}^x t |f(f(t))| dt$
 f for all $x \in [-1, 2]$ $\lim_{x \rightarrow 1} \frac{F(x)}{G(x)} = \frac{1}{14}$, Then the value of $f\left(\frac{1}{2}\right)$ is

 [Watch Video Solution](#)

4. The targets value of non negative integer for which

$$\lim_{x \rightarrow 1} \left\{ \frac{-ax + \sin(x-1) + a}{x + \sin(x-1) - 1} \right\}^{\frac{1-x}{1-\sqrt{x}}} = \frac{1}{4}$$

 [Watch Video Solution](#)

5. Let $L = (\lim)_{x \rightarrow 0} \frac{a - \sqrt{a^2 - x^2} - \frac{x^2}{4}}{x^4}$, $a > 0$. If $L \in \mathbb{N}$, then $a = 2$

(b) $a = 1$ $L = \frac{1}{64}$ (d) $L = \frac{1}{32}$

A. $a = 2$

B. $a = 1$

C. $L = \frac{1}{64}$

D. $L = \frac{1}{32}$

Answer: C

 [Watch Video Solution](#)

6. $\lim_{x \rightarrow \frac{\pi}{2}} \frac{\cot x - \cos x}{(\pi - 2x)^3}$ equals

A. $\frac{1}{4}$

B. $\frac{1}{24}$

C. $\frac{1}{16}$

D. $\frac{1}{8}$

Answer: C



Watch Video Solution

7. Let $p = \lim_{x \rightarrow 0^+} (1 + \tan^2 \sqrt{x})^{\frac{1}{2x}}$. Then $\log_e p$ is equal to

A. 2

B. 1

C. $\frac{1}{2}$

D. $\frac{1}{4}$

Answer: B



Watch Video Solution

8. $\lim_{n \rightarrow \infty} \left(\frac{(n+1)(n+2)(n+3)\dots 2n}{n^{2n}} \right)^{\frac{1}{n}}$ is equal to

A. $\frac{18}{e^4}$

B. $\frac{27}{e^2}$

C. $\frac{9}{e^2}$

D. $3 \log 3 - 2$

Answer: D



Watch Video Solution

9. $\lim_{x \rightarrow 0} \frac{\sin(\pi \cos^2 x)}{x^2}$ is equal to

A. $\frac{\pi}{2}$

B. 1

C. $-\pi$

D. π

Answer: D

 [Watch Video Solution](#)

10. $\lim_{x \rightarrow 0} \frac{(1 - \cos x)(3 + \cos x)}{x \tan 4x}$ is equal to

A. 4

B. 3

C. 2

D. $\frac{1}{2}$

Answer: B

 [Watch Video Solution](#)

11. If $\lim_{x \rightarrow \infty} \left(\frac{x^2 + x + 1}{x + 1} - ax - b \right) = 4$, then

A. $a = 1, b = 4$

B. $a = 1, b = -4$

C. $a = 2, b = -3$

D. $a = 2, b = 3$

Answer: D



Watch Video Solution

12. Let $\alpha(a)$ and $\beta(a)$ be the roots of the equation $\left((1+a)^{\frac{1}{3}} - 1 \right) x^2 + \left((1+a)^{\frac{1}{2}} - 1 \right) x + \left((1+a)^{\frac{1}{6}} - 1 \right) = 0$ where $a > -1$ then $\lim_{a \rightarrow 0^+} \alpha(a)$ and $\lim_{a \rightarrow 0^+} \beta(a)$

A. $-\frac{5}{2}$ and 1

B. $-\frac{1}{2}$ and -1

C. $-\frac{7}{2}$ and 2

D. $-\frac{9}{2}$ and 3

Answer: C



Watch Video Solution

13. If $(\lim)_{x \rightarrow 0} [1 + x \ln(1 + b^2)]^{\frac{1}{x}} = 2b \sin^2 \theta, b > 0, \theta \in (-\pi, \pi]$,

then the value of θ is $\pm \frac{\pi}{4}$ (b) $\pm \frac{\pi}{3}$ (c) $\pm \frac{\pi}{6}$ (d) $\pm \frac{\pi}{2}$

A. $\pm \frac{\pi}{4}$

B. $\pm \frac{\pi}{3}$

C. $\pm \frac{\pi}{6}$

D. $\pm \frac{\pi}{2}$

Answer: D



Watch Video Solution

14. The value of $\lim_{x \rightarrow 0} \left((\sin x)^{\frac{1}{x}} + \left(\frac{1}{x} \right)^{\sin x} \right)$, where $x > 0$, is (a) 0 (b) -1 (c) 1 (d) 2

A. 0

B. -1

C. 1

D. 2

Answer: D



Watch Video Solution

15. $\lim_{h \rightarrow 0} \frac{f(2h + 2 + h^2) - f(2)}{f(h - h^2 + 1) - f(1)}$ given that $f'(2) = 6$ and $f'(1) = 4$ then (a) limit does not exist (b) is equal to $-\frac{3}{2}$ (c) is equal to $\frac{3}{2}$ (d) is equal to 3

A. does not exist

B. is equal to $-3/2$

C. is equal to $3/2$

D. is equal to 3

Answer: C



Watch Video Solution

16. $\lim_{x \rightarrow 0} \frac{\sin(nx)((a - n)nx - \tan x)}{x^2} = 0$, when n is a non-zero positive integer, then a is equal to

A. 0

B. $\frac{n + 1}{n}$

C. n

D. $n + \frac{1}{n}$

Answer: C



Watch Video Solution

17. The integer n for which $(\lim)_{x \rightarrow 0} \left((\cos x - 1) \frac{\cos x - e^{\widehat{x}}}{x^n} \right)$ is finite nonzero number is _____

A. 1

B. 2

C. 3

D. 4

Answer: C



Watch Video Solution

18. Let $f: \mathbb{R} \rightarrow \mathbb{R}$ be such that $f(1) = 3$ and $f'(1) = 6$. Then

$$\lim_{x \rightarrow 0} \left(\frac{f(1+x)}{f(1)} \right)^{1/x} = \text{(a) } 1 \text{ (b) } e^{\frac{1}{2}} \text{ (c) } e^2 \text{ (d) } e^3$$

A. 1

B. $e^{\frac{1}{2}}$

C. e^2

D. None of these

Answer: C



Watch Video Solution

19. $\lim_{x \rightarrow \infty} \left(\frac{x-3}{x+2} \right)$ is equal to :

A. e

B. e^{-1}

C. e^{-5}

D. e^5

Answer: C



Watch Video Solution

Exercise For Session 1

1. If $f(a) = 2$ $f'(a) = 1$ $g(a) = -1$ $g'(a) = 2$ then

$$\lim_{x \rightarrow a} \frac{g(x)f(a) - g(a)f(x)}{x - a} \text{ is}$$

A. -5

B. 3

C. -3

D. 5

Answer: C



[Watch Video Solution](#)

2. The value of $\lim_{x \rightarrow 0} \frac{x \cos x - \log(1+x)}{x^2}$ is

A. 1

B. $\frac{1}{4}$

C. $\frac{1}{2}$

D. None of these

Answer: C



Watch Video Solution

3. Evaluate $\lim_{x \rightarrow 0} \frac{e^{x^2} - \cos x}{x^2}$

A. $\frac{3}{2}$

B. $-\frac{3}{2}$

C. $\frac{1}{2}$

D. $-\frac{1}{2}$

Answer: C



Watch Video Solution

4. The value of $\lim_{x \rightarrow a} \frac{\cos x - \cos a}{\cot x - \cot a}$ is

A. $-\sin^3 a$

B. $\cos^2 a$

C. $\sin^3 a$

D. $\cot a$

Answer: A



Watch Video Solution

5. The value of $\lim_{x \rightarrow 0} \left(\frac{1}{x^2} - \cot x \right)$ is

A. 0

B. 1

C. $\frac{1}{4}$

D. None of these

Answer: C



Watch Video Solution

6. Evaluate $\lim_{x \rightarrow \infty} \left[\sqrt{a^2x^2 + ax + 1} - \sqrt{a^2x^2 + 1} \right]$.

A. $\frac{1}{2}$

B. $-\frac{1}{2}$

C. does'nt exist

D. None of these

Answer: A



Watch Video Solution

7. The value of $\lim_{n \rightarrow \infty} \frac{1^3 + 2^3 + 3^3 + \dots + n^3}{(n^2 + 1)^2}$

A. $\frac{1}{4}$

B. $\frac{1}{2}$

C. $\frac{1}{2\sqrt{2}}$

D. None of these

Answer: A



Watch Video Solution

8. The value of $\lim_{n \rightarrow \infty} \frac{1 \cdot n + 2 \cdot (n - 1) + 3 \cdot (n - 2) + \dots + n \cdot 1}{1^2 + 2^2 + \dots + n^2}$

A. 1

B. -1

C. $\frac{1}{\sqrt{2}}$

D. $\frac{1}{2}$

Answer:



Watch Video Solution

9. The value of $\lim_{n \rightarrow \infty} \frac{a^n + b^n}{a^n - b^n}$, (where $a > b > 0$) is

A. 1

B. -1

C. $\frac{1}{2}$

D. $\frac{1}{\sqrt{2}}$

Answer:



[Watch Video Solution](#)

Exercise For Session 2

1. If $(\lim_{x \rightarrow 0} (x^{-3} \sin 3x + ax^{-2} + b))$ exists and is equal to 0, then

$$a = -3 \text{ and } b = \frac{9}{2} \qquad a = 3 \text{ and } b = \frac{9}{2} \qquad a = -3 \text{ and } b = -\frac{9}{2}$$

$$a = 3 \text{ and } b = -\frac{9}{2}$$

A. $a = -3, b = \frac{9}{2}$

B. $a = 3, b = \frac{9}{2}$

C. $a = -3, b = \frac{-9}{2}$

D. None of these

Answer: D



Watch Video Solution

2. The value of $\lim_{x \rightarrow a} \frac{x \sin a - a \sin x}{x - a}$ is

A. $a \sin a - \cos a$

B. $\sin a - a \cos a$

C. $\cos a + a \sin a$

D. $\sin a + a \cos a$

Answer: B



Watch Video Solution

3. Evaluate the following limits:

$$\lim_{x \rightarrow \pi} \frac{\sqrt{2 + \cos x} - 1}{(\pi - x)^2}$$

A. $\frac{1}{4}$

B. $\frac{1}{2}$

C. 2

D. Doesn't exist

Answer: A



Watch Video Solution

4. evaluate $\lim_{\theta \rightarrow \frac{\pi}{4}} \frac{\sqrt{2} - \cos \theta - \sin \theta}{(4\theta - \pi)^2}$

A. $\frac{1}{16\sqrt{2}}$

B. $\frac{1}{16}$

C. $\frac{1}{8\sqrt{2}}$

D. $\frac{1}{2\sqrt{2}}$

Answer: D



Watch Video Solution

5. The value of $\lim_{x \rightarrow \pi/4} \frac{(\cos x + \sin x)^3 - 2\sqrt{2}}{1 - \sin 2x}$ is

A. $\frac{\sqrt{3}}{2}$

B. $-\frac{3}{\sqrt{2}}$

C. $\frac{1}{2}$

D. $-\frac{1}{\sqrt{2}}$

Answer: B



Watch Video Solution

1. Evaluate $\lim_{x \rightarrow 0} \frac{e^x - e^{x \cos x}}{x + \sin x}$.

A. 0

B. 1

C. -1

D. None of these

Answer: A



Watch Video Solution

2. The value of $\lim_{x \rightarrow y} \frac{x^y - y^x}{x^x - y^y}$ is:

A. (a) $\frac{1 - \log x}{1 + \log x}$

B. (b) $\frac{1 - \log y}{1 + \log y}$

C. (c) $\frac{\log x - \log y}{\log x + \log y}$

D. (d) None of these

Answer: B



Watch Video Solution

3. The value of $\lim_{x \rightarrow 0} \frac{p^x - q^x}{r^x - s^x}$ is

A. $\frac{1 - \log p}{1 + \log p}$

B. $\frac{\log p - \log q}{\log r - \log s}$

C. $\frac{\log p \cdot \log q}{\log r \cdot \log s}$

D. None of these

Answer: B



Watch Video Solution

4. The value of $\lim_{x \rightarrow \infty} (x + 2)\tan^{-1}(x + 2) - (x \tan^{-1} x)$ is

A. $\frac{\pi}{2}$

B. Doesn't exist

C. $\frac{\pi}{4}$

D. None of these

Answer: D



Watch Video Solution

5. The value of $\lim_{x \rightarrow 4} \frac{(\cos \alpha)^x - (\sin \alpha)^x - \cos 2\alpha}{x - 4}$, $\alpha \in \left(0, \frac{\pi}{2}\right)$ is

A. $\log(\cos \alpha) + (\sin \alpha)^4 \log(\sin \alpha)$

B. $(\cos^4 \alpha) \log(\cos \alpha) - (\sin \alpha)^4 \log(\sin \alpha)$

C. $(\cos^4 \alpha) \log(\cos \alpha)$

D. None of these

Answer: B



Watch Video Solution

6. The value of $\lim_{x \rightarrow 0} \left(\frac{1^x + 2^x + 3^x + \dots + n^x}{n} \right)^{a/x}$ is

A. $(n!)^{a/n}$

B. $n!$

C. $a^{n!}$

D. Doesn't exist

Answer:



Watch Video Solution

7. If $(\lim_{x \rightarrow 0} (1 + ax + bx^2)^{\frac{2}{x}} = e^3$, then find the value of a and b .

A. $a = \frac{3}{2}, b \in R$

B. $a = \frac{1}{2}, b \in R$

C. $a \in R, b \in R$

D. None of these

Answer:



Watch Video Solution

8. If α and β are roots of $ax^2 + bx + c = 0$ the value for

$$\lim_{x \rightarrow \alpha} (1 + ax^2 + bx + c)^{2/x - \alpha} \text{ is}$$

A. $e^{2a(\alpha - \beta)}$

B. $e^{a(\alpha - \beta)}$

C. $e^{\frac{2a}{3}(\alpha - \beta)}$

D. None of these

Answer:



Watch Video Solution

9. The value of $\lim_{(n \rightarrow \infty)} \left((1.5)^n + \left[(1 + 0.0001)^{10000} \right]^n \right)^{\frac{1}{n}}$, where

[.] denotes the greatest integer function is:

A. 1

B. $\frac{1}{2}$

C. does'nt exist

D. 2

Answer:



[Watch Video Solution](#)

10. The value of $\lim_{x \rightarrow 0} |x|^{[\cos x]}$, $[\cdot]$ denotes greatest integer function is

A. 0

B. Doesn't exist

C. 1

D. None of these

Answer:



[Watch Video Solution](#)

Exercise For Session 4

1. Evaluate $\lim_{x \rightarrow 0^+} (\sin x)^x$

 [Watch Video Solution](#)

2. Evaluate $\lim_{x \rightarrow 0^+} (\sin x)^{\tan x}$

 [Watch Video Solution](#)

3. evaluate $\lim_{n \rightarrow \infty} \left(\frac{e^n}{\pi} \right)^{\frac{1}{n}}$

 [Watch Video Solution](#)

4. The value of $\lim_{x \rightarrow 0} \frac{e - (1+x)^{1/x}}{\tan x}$ is

A. e

B. $\frac{11e}{24}$

C. $\frac{e}{2}$

D. None of these

Answer: D



[Watch Video Solution](#)

Exercise For Session 5

1. The value of $\lim_{x \rightarrow 1} (\{1 - x + [x - 1] + [1 - x]\})$ (where $[.]$ denotes the greatest integral function) is

A. -1

B. Doesn't exist

C. 1

D. None of these

Answer:



Watch Video Solution

2. The value of $\lim_{x \rightarrow 0} \frac{\sin[x]}{[x]}$ (where $[.]$ denotes the greatest integer function) is The value of $\lim_{x \rightarrow 0} \left[\frac{\sin x}{x} \right]$ (where $[.]$ denotes the greatest integer function) is

- A. 1
- B. $\sin 1$
- C. does'nt exist
- D. None of these

Answer:



Watch Video Solution

3. The value of $\lim_{x \rightarrow 0} \sin^{-1}\{x\}$ (where $\{.\}$ denotes fractional part of x) is

A. 0

B. $\frac{\pi}{2}$

C. does'nt exist

D. None of these

Answer:



[Watch Video Solution](#)

4. If $[.]$ denotes the greatest integer function then $\lim_{x \rightarrow 0} \left[\frac{x^2}{\tan x \cdot \sin x} \right] =$

A. 0

B. 1

C. does'nt exist

D. None of these

Answer:



[Watch Video Solution](#)

Exercise For Session 6

1. The value of

$$\lim_{x \rightarrow \infty} \left(\frac{1}{n^3} \right) ([1^2x + 1^2] + [2^2x + 2^2] + \dots + [n^2x + n^2])$$
 is

where $[.]$ denotes the greatest integer function.

A. $\frac{x}{3}$

B. $x + \frac{1}{3}$

C. $\frac{x}{3} + \frac{1}{3}$

D. None of these

Answer:



[Watch Video Solution](#)

2. The value of

$$\lim_{x \rightarrow \infty} \left\{ \lim_{n \rightarrow \infty} \frac{[1^2(\sin x)^x] + [2^2(\sin x)^x] + \dots + [n^2(\sin x)^x]}{n^3} \right\}$$

is (wehre $[.]$ denotes the greatest integer function)

A. A. $\frac{x}{3} + \frac{\sin x}{3}$

B. B. $\frac{x}{3} + (\sin x)^x$

C. C. $\frac{1}{3}$

D. D. 0

Answer: option 4



Watch Video Solution

3. The value of $\lim_{x \rightarrow 1^+} \frac{\int_1^x |t - 1| dt}{\sin(x - 1)}$ is:

A. (a) 0

B. (b) 1

C. (c) doesn't exist

D. (d) None of these

Answer:



[Watch Video Solution](#)

4. The value of $\lim_{n \rightarrow \infty} \sum_{k=1}^n \log \left(1 + \frac{k}{n} \right)^{\frac{1}{n}}$, is

A. $\log_e \left(\frac{e}{4} \right)$

B. $\log_e \left(\frac{4}{e} \right)$

C. $\log_e 4$

D. None of these

Answer:



[Watch Video Solution](#)

5. Evaluate: $(\lim)_{n \rightarrow \infty} n \left[\frac{1}{na} + \frac{1}{na+1} + \frac{1}{na+2} + \dots + \frac{1}{nb} \right]$

A. $\log\left(\frac{a}{b}\right)$

B. $\log\left(\frac{b}{a}\right)$

C. $\log(ab)$

D. None of these

Answer:



Watch Video Solution