



BIOLOGY

BOOKS - DINESH PUBLICATION ENGLISH

ANIMAL TYPES

Multiple Choice Question

1. According to Darwin one acre of land may contain

- A. About 100,000 earth worms
- B. About 50,000 earth worms
- C. About 20,000 earth worms
- D. None of the above

Answer: B



Watch Video Solution

2. The most common earthworm of India is

- A. *Pheretima communissima*
- B. *Eutyphacus*
- C. *Pheretima posthuma*
- D. *Lumbricus*

Answer: C

 Watch Video Solution

3. Pharyngeal nephridia of *Pheretima* are found in segments

- A. 4, 5 and 6
- B. 5, 6 and 7
- C. 6, 7 and 8

D. 3, 4 and 5

Answer: A



Watch Video Solution

4. In earthworm the septal nephridia begin from behind segments

A. 18

B. 17

C. 15

D. 13

Answer: C



Watch Video Solution

5. Chaeta of Pheretima is about

A. 0.025 mm long

B. 0.25 mm long

C. 0.5 mm long

D. 2.5 mm long

Answer: B



Watch Video Solution

6. Respiratory pigment in Pheretima is present in

A. Erythrocytes

B. Plasma

C. Yellow cells

D. Mucocytes

Answer: B



Watch Video Solution

7. The function of spermathecae is :

- A. To store sperms
- B. To nourish sperms
- C. To secrete sticky material during copulation
- D. None of the above

Answer: B



[Watch Video Solution](#)

8. The nature of chaetae of Earthworm is

- A. Chitin
- B. Cellulose
- C. Protein

D. Chitin and scleroprotien

Answer: D



[Watch Video Solution](#)

9. Integumentary nephridia of Earthworm occur in

- A. All segments except the first two
- B. First two segments of the body
- C. First fifteen segments
- D. All the segments

Answer: A



[Watch Video Solution](#)

10. In Earthworm, the spermathecae occur in

A. 4 - 7 segments

B. 5 - 8 segments

C. 6 - 9 segments

D. 7 - 10 segments

Answer: C



[Watch Video Solution](#)

11. Intestinal caeca of Earthworm lie between

A. 22 - 26 segments

B. 20 - 24 segments

C. 14 -16 segments

D. 33 - 36 segments

Answer: A



[Watch Video Solution](#)

12. Coelomic fluid of Pheretima is

- A. Acidic
- B. Watery
- C. Oily
- D. Alkaline

Answer: D



[Watch Video Solution](#)

13. Erythrocytes of Pheretima contain

- A. Haemoglobin
- B. Erythrocrucorin
- C. Haemocyanin

D. Erythrocytes are absent

Answer: D



Watch Video Solution

14. Blood of Pheretima is

A. Red

B. Blue

C. Colourless

D. None of the above

Answer: A



Watch Video Solution

15. Circulatory system of Pheretima is of

- A. Open type
- B. Closed type
- C. Both
- D. None

Answer: B

 [Watch Video Solution](#)

16. Body cavity of Earthworm is

- A. Schizocoel
- B. Enterocoel
- C. Pseudocoel
- D. None of the above

Answer: A

 [Watch Video Solution](#)

17. Dorsal pores of Earthworm do not occur in the region of

- A. First eleven and last annulus
- B. 14 - 16 annuli
- C. 100 - 110 annuli
- D. 26 - 40 segments

Answer: A



[Watch Video Solution](#)

18. Dorsal pores of Earthworm are meant for passage of

- A. Coelomic fluid
- B. Blood
- C. Waste materials

D. Gametes

Answer: A



Watch Video Solution

19. Pheretima is

A. Ammonotelic

B. Uricotelic

C. Ureotelic

D. None of the above

Answer: C



Watch Video Solution

20. Gustoreceptors of Pheretima are present

A. In the buccal cavity

B. In the prostomium

C. In the peristomium

D. None of the above

Answer: A



Watch Video Solution

21. Oxygen is carried to different parts of body from skin by :

A. Blood plasma

B. Blood corpuscles

C. Both A and B

D. A special pigment called haemocyanin

Answer: A



Watch Video Solution

22. Number of Pheretima species found in India is

A. 7

B. 13

C. 25

D. 31

Answer: B



[Watch Video Solution](#)

23. Earthworm is

A. Nocturnal

B. Diurnal

C. Aquatic

D. All the above

Answer: A



Watch Video Solution

24. Pheretima is

A. Arboreal

B. Scansorial

C. Fossorial

D. Cursorial

Answer: C



Watch Video Solution

25. Nephridiopores of Earthworm occur in all segments except

- (a) First
- (b) Last
- (c) Both first and last
- (d) First two and the last

A. All segments

B. All segments except first two

C. All segments except first two and last

D. All except clitellum, first two and last segment

Answer: C



Watch Video Solution

26. Nephridiopores present over the body of earthworm belong to

A. Integumentary nephridia

B. Septal nephridia

C. Pharyngeal nephridia

D. Protonephridia

Answer: A



Watch Video Solution

27. Number of ovaries present in Earthworm is

A. One

B. Two

C. Four

D. Eight

Answer: B



Watch Video Solution

28. Number of testes in Earthworm is

- A. One
- B. Two
- C. Four
- D. Eight

Answer: C



Watch Video Solution

29. In Earthworm, typhlosole is component of

- A. Male reproductive system
- B. Female reproductive system
- C. Stomach
- D. Intestine

Answer: D



Watch Video Solution

30. Stomach of Earthworm has glands

- A. Digestive
- B. Calcareous
- C. Endocrine
- D. Both A and B

Answer: D



Watch Video Solution

31. Haemoglobin and blood cells are formed in Earthworm from

- A. Lateral hearts

B. Laterooesophageal hearts

C. Blood glands

D. Ventral blood vessel

Answer: C



Watch Video Solution

32. Salivary glands of Cockroach open at

A. Buccal cavity

B. Hypopharynx

C. Epipharynx

D. Pharynx

Answer: B



Watch Video Solution

33. The basal segment of antenna is called

- A. Scape
- B. Pedicel
- C. Clypeus
- D. Frons

Answer: A



[Watch Video Solution](#)

34. Eggs of cockroach are

- A. Mesolecithal
- B. Centrolecithal
- C. Telolecithal
- D. Alecithal

Answer: B



[Watch Video Solution](#)

35. In cockroach, ootheca is produced by secretion of -

- (a) Collateral glands
- (b) Conglobate gland
- (c) Mushroom glands
- (d) Gynatrium

A. Phallic gland

B. Mushroom gland

C. Colleterial gland

D. All the above

Answer: C



[Watch Video Solution](#)

36. In Cockroach an ovary is formed of ovarioles

- A. 4
- B. 6
- C. 8
- D. 10

Answer: C



Watch Video Solution

37. Cockroach has a stomodaeal valve between

- A. Crop and gizzard
- B. Gizzard and mesenteron
- C. Mesenteron and ileum
- D. Ileum and colon

Answer: B



Watch Video Solution

38. In cockroaches, the sclerite are joined to each other by

- A. Terga
- B. Sterna
- C. Pleura
- D. Arthroial plates

Answer: D



Watch Video Solution

39. The mouth of cockroach is provided with several appendages. Name them.

A. Prognathous

B. Hypognathous

C. Orthognathous

D. Opisthognathous

Answer: B



Watch Video Solution

40. The labium in cockroach is formed by

A. Upper lip

B. Lower lip

C. Jaw

D. Tongue

Answer: A



Watch Video Solution

41. Head capsule of Cockroach is formed of segments

A. 1

B. 2

C. 4

D. 6

Answer: D



Watch Video Solution

42. Thorax of Cockroach has segments

A. 1

B. Two

C. Three

D. Four

Answer: C



Watch Video Solution

43. Locomotor centre of the body of an insect is

A. Brain

B. Head

C. Thorax

D. Abdomen

Answer: C



Watch Video Solution

44. Nervures occur in

A. Nerve fibres

B. Wings

C. Tarsus

D. Femur

Answer: B



[Watch Video Solution](#)

45. Number of sterna visible in female Cockroach is

A. Ten

B. Nine

C. Eight

D. Seven

Answer: D



[Watch Video Solution](#)

46. Number of sterna visible in male Cockroach is

- A. Nine
- B. Ten
- C. Eight
- D. Eleven

Answer: A



[Watch Video Solution](#)

47. Terga visible in male Cockroach is

- A. Ten
- B. Nine
- C. Eight

D. Seven

Answer: B



Watch Video Solution

48. First pair of wings of Cockroach are

- A. Tegmina attached to mesothorax
- B. Elytra attached to prothorax
- C. Tegmina attached to thorax
- D. Tegmina attached to thorax

Answer: A



Watch Video Solution

49. Tegmina are

- A. Used in flight
- B. Function as wing covers
- C. Not used in flight
- D. Both B and C

Answer: D

 [Watch Video Solution](#)

50. Acoustic organs of Cockroach are located over

- A. Anal Styles
- B. Fenestrae
- C. Anal cerci
- D. Filament part of antennae

Answer: C

 [Watch Video Solution](#)

51. Brood pouch is formed in female Cockroach by

- A. Seventh sternum
- B. Eighth sternum
- C. Ninth sternum
- D. All the above

Answer: D



Watch Video Solution

52. Oenocytes occur in

- A. Blood
- B. Epidermis
- C. Malpighian tubules

D. Crop

Answer: B



Watch Video Solution

53. Oenocytes secrete

A. Epicuticle

B. Exocuticle

C. Endocuticle

D. All the above

Answer: A



Watch Video Solution

54. Trichogen cells of epidermis of Cockroach produce

- A. Exocuticle
- B. Endocuticle
- C. Bristles
- D. Membrane around bristles

Answer: C

 [Watch Video Solution](#)

55. Anus in Cockroach occurs in

- A. Tenth sternum
- B. Dorsal surface of 10th tergum
- C. Ventral surface of 10th tergum
- D. Ninth sternum

Answer: C

 [Watch Video Solution](#)

56. Female genital aperture of Cockroach occurs over

- A. Eighth sternum
- B. Seventh sternum
- C. Ninth sternum
- D. Between 9th sternum and 10th tergum

Answer: A



[Watch Video Solution](#)

57. What is gonapophyses?

- A. Mouth parts
- B. Plates bearing spiracles
- C. Joints between sclera

D. External genitalia

Answer: D



[Watch Video Solution](#)

58. The body cavity of cockroach is called

A. Coelom

B. Pseudocoel

C. Swellings of embryonic blood vessels

D. Swelling of embryonic gut

Answer: C



[Watch Video Solution](#)

59. Body cavity of Cockroach is called haemocoel because

- A. It contains blood
- B. It contains lymph
- C. It is filled with water
- D. It is empty

Answer: A

 [Watch Video Solution](#)

60. Number of chambers in body cavity of Cockroach is

- A. One
- B. Two
- C. Three
- D. Four

Answer: C

 [Watch Video Solution](#)

61. True coelom of Cockroach occurs

- A. Around head sinuses
- B. Around ganods
- C. Around heart
- D. In thorax

Answer: B



[Watch Video Solution](#)

62. A cavity present in between the mouth parts of Cockroach is

- A. Buccal cavity
- B. Preoral cavity
- C. Buccopharyngeal cavity

D. Proventriculus

Answer: B



Watch Video Solution

63. In Cockroach the ingested food is stored in

A. Oesophagus

B. Crop

C. Gizzard

D. All the above

Answer: B



Watch Video Solution

64. Digestion in Periplanata begins in

A. Crop

B. Preoral cavity

C. Midgut

D. Pharynx

Answer: B



Watch Video Solution

65. 7 - 8 finger-like blind tubules open into anterior part of midgut of Cockroach. They are

A. Intestinal Caeca

B. Malpighian tubules

C. Hepatic caeca

D. None of the above

Answer: C

 [Watch Video Solution](#)

66. Structure associated with storage of food in alimentary canal of Periplanata

A. Oesophagus

B. Crop

C. Ileum

D. Colon

Answer: C

 [Watch Video Solution](#)

67. Blood of Cockroach contains corpuscles known as

A. Haemocytes

B. Plasmocytes

C. Coagulocytes

D. All the above

Answer: D



Watch Video Solution

68. Number of alary muscles in Cockroach are

A. Twelve pairs

B. Twelve

C. Thirteen

D. Thirteen pairs

Answer: A



Watch Video Solution

69. On contraction of alary muscles, the size of pericardial sinus

- A. Increases
- B. Decreases
- C. Remains same
- D. There is no relation between the two

Answer: A



[Watch Video Solution](#)

70. Number of diaphragms present in the haemocoel of Periplanata is

- A. One
- B. Two
- C. Three
- D. None

Answer: B



Watch Video Solution

71. Number of spiracles in Cockroach is

- A. 6 pairs
- B. 8 pairs
- C. 10 pairs
- D. 12 pairs

Answer: C



Watch Video Solution

72. Wings in the cockroach occur in

- A. Prothoracic

B. Mesothoracic

C. Metathoracic

D. both b and c

Answer: B



[Watch Video Solution](#)

73. Which pair of spiracles are borne dorsolaterally over the tergum instead of pleura

A. First thoracic

B. Second thoracic

C. First abdominal

D. Second abdominal

Answer: C



[Watch Video Solution](#)

74. Number of longitudinal tracheal trunks in Cockroach is

- A. Three pairs
- B. Three
- C. Two
- D. Two pairs

Answer: A



[Watch Video Solution](#)

75. Chitinous rings supporting tracheae are called

- A. Atria
- B. Taenidia
- C. Ctenidia
- D. Lamellae

Answer: B



[Watch Video Solution](#)

76. Ventilation movements in Cockroach are performed

- A. At rest
- B. During activity
- C. All the times
- D. When threatened

Answer: B



[Watch Video Solution](#)

77. Cockroach is

- A. Uricotelic

B. Ureotelic

C. Ammonotelic

D. Guanotelic

Answer: A



Watch Video Solution

78. Binucleate cells are

A. Plasmocytes

B. Coagulocytes

C. Nephrocytes

D. Oenocytes

Answer: C



Watch Video Solution

79. Uricose glands are part of

- A. Colleterial glands
- B. Mushroom glands
- C. Conglobate glands
- D. Vasa deferentia

Answer: B



Watch Video Solution

80. Nerve cord of Cockroach is

- A. Dorsal and single
- B. Dorsal and double
- C. Ventral and single
- D. Ventral and double

Answer: D



Watch Video Solution

81. Brain of Cockroach is made of two groups of

- A. One ganglia
- B. Two ganglia
- C. Three ganglia
- D. Four ganglia

Answer: C



Watch Video Solution

82. Chordotonal organs are connected with sense of

- A. Hearing

B. Smell

C. Taste

D. Thermoreceptor

Answer: A



Watch Video Solution

83. Cockroach has

A. Two types of eyes

B. One type of eyes

C. Three types of eyes

D. None of the above

Answer: A



Watch Video Solution

84. Number of simple eyes found in Cockroach is

- A. One
- B. Two
- C. Three
- D. Numerous

Answer: C



[Watch Video Solution](#)

85. Ocelli or fenestrae of Cockroach take part in

- A. Sight
- B. Perception of temperature
- C. Perception of light
- D. Perception of humidity

Answer: C



Watch Video Solution

86. Humidity and temperature receptors are located in Cockroach over

- A. Inner surface of labrum
- B. Labial plaps
- C. Femur
- D. Antennae

Answer: D



Watch Video Solution

87. Vision of Cockroach is

- A. Monocular

B. Binocular

C. Mosaic

D. Superposed

Answer: C



Watch Video Solution

88. Number of vision units in each eye of Cockroach is

A. 2000

B. 500

C. 200

D. 50

Answer: A



Watch Video Solution

89. Hormone ecdysone is produced by

- A. Corpora allata
- B. Prothoracic glands
- C. Corpora cardiaca
- D. Intercerebral gland cells

Answer: B



[Watch Video Solution](#)

90. Tracheal respiration takes air to

- A. Blood
- B. Lungs
- C. Body cavity
- D. Tissues

Answer: D



Watch Video Solution

91. Testes occur in Cockroach in abdominal segments

A. 2 – 4

B. 4 – 6

C. 6 – 8

D. 5 – 7

Answer: B



Watch Video Solution

92. Covering of spermatophore in Cockroach is formed by

A. Mushroom gland

B. Conglabate gland

C. Phallic gland

D. B and C

Answer: D



[Watch Video Solution](#)

93. Mushroom or utricular gland of male Cockroach takes part in

A. Nourishing of sperms

B. Storing of sperms

C. Formation of inner membrane of spermatophore

D. All the above

Answer: D



[Watch Video Solution](#)

94. A stenohygrous animal is

- A. Cockroach
- B. Frog
- C. Rat
- D. Rabbit

Answer: B



Watch Video Solution

95. Common Indian Frog is Bull Frog because it is

- A. Shaped like a bull
- B. Larged sized
- C. Croaks loudly
- D. Both B and C

Answer: D



Watch Video Solution

96. Frog is able to swim rapidly with the help of

- A. Padded forelimbs
- B. Webbed long hind limbs
- C. Both A and B
- D. Webbed fore limbs

Answer: B



Watch Video Solution

97. What is prominent in squatting position of Frog

- A. Bulging eyes

B. Tympanum

C. Hump

D. Unfolded fore limbs

Answer: C



Watch Video Solution

98. Croaking of frog is

A. Call for food

B. Indication of enemy

C. Call for mating

D. Call for hibernation

Answer: C



Watch Video Solution

99. Aestivation of Frog occurs during

- A. Winter
- B. Summer
- C. Rainy season
- D. Autumn

Answer: B



Watch Video Solution

100. Long muscular hind limbs of Frog help in

- A. Swimming
- B. Leaping
- C. Walking
- D. Both A and B

Answer: D



Watch Video Solution

101. Tadpole of Frog is

- A. Carnivorous
- B. Carnivorous and cannibal
- C. Herbivorous
- D. Sanguivorous

Answer: C



Watch Video Solution

102. Adult Frog is

- A. Carnivorous

B. Sanguivorous

C. Omnivorous

D. Grainivorous

Answer: A



Watch Video Solution

103. Frog hibernate during

A. Autumn

B. Winter

C. Rainy season

D. Spring

Answer: B



Watch Video Solution

104. Frog hibernates during winter to

- A. Avoid fatal cold
- B. Avoid death due to hunger
- C. Avoid dreadful winter animals
- D. All the above

Answer: A



Watch Video Solution

105. *Rana tigrina* has a yellow coloured streak called

- A. Abdominal streak
- B. Lateral line
- C. Vertebral line
- D. Brow spot

Answer: C



[Watch Video Solution](#)

106. Ability of Frog to change colour is called

- A. Mimicry
- B. Metachrosis
- C. Camouflage
- D. All the above

Answer: B



[Watch Video Solution](#)

107. A light coloured patch found on the head of Frog in between the two eyes is

- A. Vocal sac
- B. Dermal plica
- C. Tympanum
- D. Brow spot

Answer: D

 [Watch Video Solution](#)

108. Fore limbs of Frog have

- A. Five digits
- B. Four digits
- C. Three fingers
- D. One finger

Answer: B

 [Watch Video Solution](#)

109. The digit absent in the fore limbs of Frog is

- A. Pollex
- B. Hallux
- C. Index finger
- D. Little finger

Answer: A



Watch Video Solution

110. Amplexusory or nuptial pad is present in male Frog over

- A. Index finger
- B. Little finger
- C. Hallux

D. Outer toe

Answer: A



Watch Video Solution

111. In Frog webs are present in between

A. Fingers of forelimbs

B. Toes of hind limbs

C. Both A and B

D. None of the above

Answer: B



Watch Video Solution

112. Pairing of male and female frogs during breeding season is called

- A. Coitus
- B. Mating
- C. Copulation
- D. Amplexus

Answer: D

 [Watch Video Solution](#)

113. in frog and Toad, the tongue is attached

- A. Posteriorly
- B. Laterally
- C. Anteriorly
- D. Absent

Answer: C

 [Watch Video Solution](#)

114. in frog the upper eye lid is

- A. Rapidly movable
- B. Immovable
- C. Slightly movable
- D. Absent

Answer: C



Watch Video Solution

115. Lower eyelid of Frog is

- A. Large and opaque
- B. Small and semitransparent
- C. Nearly immovable

D. Both B and C

Answer: D



[Watch Video Solution](#)

116. Male frogs can croak louder than females because of

A. Larger size

B. Larger larynx

C. Vocal sacs

D. Stronger muscles

Answer: C



[Watch Video Solution](#)

117. Skin of Frog does not possess

A. Scales

B. Mucous glands

C. Chromatophores

D. Epidermis

Answer: A



[Watch Video Solution](#)

118. Outermost skin layer or stratum corneum of Frog consists of

A. Columnar unkeratinised cells

B. Flat keratinised cells

C. Flat non-keratinised cells

D. Columnar keratinised cells

Answer: B



[Watch Video Solution](#)

119. Skin of Frog possess

- A. Mucous glands
- B. Sebaceous glands
- C. Sweat glands
- D. Both A and B

Answer: A



Watch Video Solution

120. Frog casts off its outer dead skin

- A. On being agitated
- B. When frightened
- C. When hungry

D. Periodically

Answer: D



Watch Video Solution

121. Skin casting of Frog is

- A. Cuboidal epithelium
- B. Squamous epithelium
- C. Columnar epithelium
- D. Ciliated epithelium

Answer: B



Watch Video Solution

122. In Frog chromatophores occur in

- A. Epidermis
- B. Stratum corneum of epidermis
- C. Dermis
- D. Stratum germinativum

Answer: C

 [Watch Video Solution](#)

123. Chromatophores of Frog consists of

- A. Lipophores
- B. Erythrophores and guanophores
- C. Melanophores
- D. All the above

Answer: D

 [Watch Video Solution](#)

124. Teeth of Frog are

- A. Acrodont and isodont
- B. Thecodont and isodont
- C. Acrodont and heterodont
- D. Thecodont and heterodont

Answer: A



Watch Video Solution

125. Which is absent in Frog

- A. Gastric glands
- B. Salivary glands
- C. Pancreas

D. Liver

Answer: B



Watch Video Solution

126. Buccorpharyngeal cavity of Frog is lined by

- A. Squamous epithelium
- B. Cuboidal epithelium
- C. Non-ciliated columnar epithelium
- D. Ciliated columnar epithelium

Answer: D



Watch Video Solution

127. In frog, teeth occur on

- (a) lower jaw only
- (b) upper jaw only
- (c) both a and b
- (d) none of the above

A. Lower jaw

B. Upper jaw

C. Both jaws

D. None of the jaws

Answer: B



Watch Video Solution

128. Subrostral fossae are

A. Three terminal over upper jaw

B. Three terminal over lower jaw

C. Two lateral over upper jaw

D. Two lateral over lower jaw

Answer: A



[Watch Video Solution](#)

129. Pre-lingual elevations occur in Frog

A. Three terminal over upper jaw

B. Three terminal over lower jaw

C. Three lateral over upper jaw

D. Three lateral over lower jaw

Answer: B



[Watch Video Solution](#)

130. The organ that stores bile is

- A. Pancreas
- B. Liver
- C. Gall bladder
- D. Spleen

Answer: C



Watch Video Solution

131. Skin is an ideal respiratory organ in Frog because it is

- A. Highly vascular
- B. Kept moist
- C. Devoid of hair and scales
- D. All the above

Answer: D



Watch Video Solution

132. In Frog, throat is raised during buccopharyngeal and pulmonary respiration by means of

- A. Hypoglossus muscles
- B. Submentalis muscles
- C. Sternohyoid muscles
- D. Petrohyoid muscles

Answer: D



Watch Video Solution

133. Pulmonary respiration of Frog consists of

- A. Inspiration and expiration
- B. Aspiration, inspiration and expiration
- C. Aspiration and external respiration
- D. Aspiration and inspiration

Answer: B

 [Watch Video Solution](#)

134. Which type of respiration will occur in Frog during leaping

- A. Pulmonary
- B. Buccopharyngeal
- C. Cutaneous
- D. All the above

Answer: A

 [Watch Video Solution](#)

135. A type of respiration in Frog in which the external nares remain open

- A. Cutaneous
- B. Buccopharyngeal
- C. Pulmonary
- D. All the above

Answer: B



Watch Video Solution

136. Sound producing organ of Frog is

- A. Syrinx
- B. Larynx
- C. Laryngotracheal chamber

D. Lungs

Answer: C



[Watch Video Solution](#)

137. Laryngotracheal chamber of Frog is Supported by

- A. One arytenoid and one cricoid cartilage
- B. Two arytenoids and one cricoid
- C. One arytenoid and two cricoids
- D. Two arytenoids and two cricoids

Answer: B



[Watch Video Solution](#)

138. Erythrocytes of Frog are

- A. Biconcave
- B. Biconvex
- C. Nucleated
- D. Both B and C

Answer: D

 [Watch Video Solution](#)

139. Thrombocytes of Frog are

- A. Cell fragments
- B. Nucleated spindle shaped cells
- C. Irregular nucleated cells
- D. Spindle-shaped anucleate cells

Answer: B

 [Watch Video Solution](#)

140. Heart of frog is

- A. Two chambered
- B. Three chambered
- C. Four chambered
- D. Five chambered

Answer: B



Watch Video Solution

141. Auriculo-ventricular aperture of Frog is

- A. Single and two flapped
- B. Two, two flapped and three flapped
- C. Single and four flapped

D. Double and double flapped

Answer: C



[Watch Video Solution](#)

142. Sinus venosus occurs on

- A. Dorsal side of heart
- B. Ventral side of heart
- C. Basal region of heart
- D. Apical end of heart

Answer: A



[Watch Video Solution](#)

143. Venae cavae open into

- A. Right auricle
- B. Left auricle
- C. Sinus venosus
- D. Truncus arteriosus

Answer: C

 [Watch Video Solution](#)

144. Chordae tendineae

- A. Increase area of ventricle
- B. Prevent pushing of auriculoventricular valve into auricles
- C. Keep auricles stretched
- D. Direct flow of blood into truncus arteriosus

Answer: B

 [Watch Video Solution](#)

145. Truncus arteriosus receives blood from

- A. Right auricle
- B. Left auricle
- C. Ventricle
- D. Venae cavae

Answer: C



Watch Video Solution

146. Number of aortic arches in Frog is

- A. Two
- B. Two pairs
- C. Three pairs

D. Four pairs

Answer: C



[Watch Video Solution](#)

147. Renal portal system of Frog is significant in

- A. Supplying extra blood to kidneys
- B. Drawing blood from kidneys
- C. Quick short circuit for elimination of nitrogenous wastes
- D. Quick short circuit for elimination of fats

Answer: C



[Watch Video Solution](#)

148. Pulmonary veins of Frog open into

A. Sinus venosus

B. Right auricle

C. Left auricle

D. Truncus arteriosus

Answer: C



Watch Video Solution

149. Number of lymph hearts in Frog is

A. One

B. Two

C. Three

D. Four

Answer: D



Watch Video Solution

150. Total number of cranial nerves in frog is

- A. 8
- B. 10
- C. 12
- D. 14

Answer: B



Watch Video Solution

151. Frog has spinal nerves

- A. 33 pairs
- B. 13 pairs
- C. 9 paired and 1 unpaired

D. 10 paired and 1 unpaired

Answer: C



[Watch Video Solution](#)

152. Midbrain of Frog consists of

- A. Corpora quadrigemina
- B. Corpora quadrigemina and crura cerebri
- C. Two optic lobes and crura cerebri
- D. Two optic lobes

Answer: C



[Watch Video Solution](#)

153. Filum terminale of Frog is located in

A. Skull

B. Urostyle

C. Pelvic girdle

D. Pectoral girdle

Answer: B



Watch Video Solution

154. Harderian gland occurs in connection with

A. Lower eyelid

B. Upper eyelid

C. Cornea

D. Iris

Answer: A



Watch Video Solution

155. Secretion of harderian gland is

- A. Watery
- B. Acidic
- C. Oily or unctuous
- D. Alkaline

Answer: C



Watch Video Solution

156. Tympanic membrane is stretched over a cartilaginous ring called

- A. Tympanicus annulus
- B. Columella auris
- C. Stapes

D. Fenestra ovalis

Answer: A



[Watch Video Solution](#)

157. Taste buds in buccal cavity of Frog are located over

- A. Tongue
- B. Tongue and floor of buccal cavity
- C. Tongue and roof of buccal cavity
- D. Roof of buccal cavity only

Answer: C



[Watch Video Solution](#)

158. Number of uriniferous tubules in a kidney of Frog is

A. Numerous

B. 10000

C. 5000

D. 2000

Answer: D



[Watch Video Solution](#)

159. Funnel-shaped ciliated pits on the ventral side of kidney of Frog

A. Ostia

B. Nephrostomes

C. Nephridiopores

D. Coelomostomes

Answer: B



[Watch Video Solution](#)

160. In Frog, ureters open in

- A. Rectum
- B. Urinary bladder
- C. Colon
- D. Cloaca

Answer: D



Watch Video Solution

161. Ureter of male Frog has a swelling called vesicular seminalis. It

- A. Stores urine
- B. Stores sperms
- C. Stores ova

D. Both A and B

Answer: B



[Watch Video Solution](#)

162. Oviduct of female Frog has a swelling or ovisac for storing

A. Sperms

B. Ova

C. Albumin

D. Urine

Answer: B



[Watch Video Solution](#)

163. Male Frog can be distinguished from female by

- A. Nuptial pad
- B. Vocal sacs
- C. Narrow abdomen
- D. All the above

Answer: D

 [Watch Video Solution](#)

164. Albuminous layer around the egg of Frog is deposited by

- A. Ovarian follicles
- B. Ovary
- C. Oviduct
- D. Coelom

Answer: C

 [Watch Video Solution](#)

165. During hibernation, frog respire with

- A. Buccopharyngeal cavity
- B. Skin/integument
- C. Skin and lungs
- D. Skin, lungs and buccopharyngeal cavity

Answer: B



Watch Video Solution

166. a frog has

- A. Eyes but no lids
- B. Jaws but no teeth
- C. Hands but no fingers

D. Ears but no pinnae

Answer: D



[Watch Video Solution](#)

167. Frog has

A. Five fingers and four toes

B. Four fingers and five toes

C. Five fingers and five toes

D. Four fingers and four toes

Answer: B



[Watch Video Solution](#)

168. Bull frog of India is

A. *Rana tigrina*

B. *R. sylvatica*

C. *R. ecutesbeiana*

D. *R. esculenta*

Answer: A

 [Watch Video Solution](#)

169. The glands present in the skin of frog are

A. Sweat and mammary

B. Sweat and sebaceous

C. Sweat and mucous

D. Mucous and poisonous

Answer: D

 [Watch Video Solution](#)

170. Mucus helps frog in forming

- A. Thick skin
- B. Dry skin
- C. Smooth skin
- D. Moist skin

Answer: D



Watch Video Solution

171. Frog is

- A. Ammonotelic
- B. Ureotelic
- C. Uricotelic

D. None of the above

Answer: B



[Watch Video Solution](#)

172. Mouth parts of cockroach are :

- A. Piercing and sucking
- B. Sucking and siphoning
- C. Biting and chewing
- D. Sponging

Answer: C



[Watch Video Solution](#)

173. The excretory organs of cockroach are

A. Flame cells

B. Nephridia

C. Green glands

D. Malpighian tubules

Answer: D



Watch Video Solution

174. Periplaneta shows

A. complete metamorphosis

B. Incomplete metamorphosis

C. No metamorphosis

D. Gradual metamorphosis

Answer: D



Watch Video Solution

175. Male and female cockroaches can be distinguished externally by

- A. Anal styles in male
- B. Anal cerci in female
- C. Anal style and antennae in female
- D. Both B and C

Answer: A



[Watch Video Solution](#)

176. The number of ganglia in the abdominal nerve-cord of cockroach is

- A. 12
- B. 10
- C. 9

D. 6

Answer: C



Watch Video Solution

177. In Cockroach nerve cord ganglia are

- A. Two pairs thoracic and four pairs abdominal
- B. Three pairs thoracic and six pairs abdominal
- C. Three pairs thoracic and five pairs abdominal
- D. Two pairs thoracic and seven pairs abdominal

Answer: B



Watch Video Solution

178. Assertion (A) *Periplaneta americana* is nocturnal, omnivorous, household pest.

Reason (R) It is because it acts as scavenger.

A. A is true but R is false

B. A is false and R is true

C. Both A and R are true and R is correct explanation of A

D. Both A and R are true but R is not correct explanation of A

Answer: A



Watch Video Solution

179. Region of Earthworm which is forest of nephridia is

A. Clitellar region

B. Pharyngeal region

C. Typhlosolar region

D. Intestinal region

Answer: A



Watch Video Solution

180. Chloragogen cells are present in :

- A. Body wall of Leucosolenia
- B. Blood of Earthworm
- C. Coelomic fluid of Earthworm
- D. Blood of Cockroach

Answer: C



Watch Video Solution

181. In Earthworm, genital papillae occur in segments

A. 16 and 17

B. 16 and 18

C. 17 and 19

D. 17 and 18

Answer: C



[Watch Video Solution](#)

182. Flow of blood in dorsal blood vessel of Earthworm is

A. Backward

B. Forward

C. Sideward

D. Downward

Answer: B



[Watch Video Solution](#)

183. Setae occur in Earthworm in all segments except

- A. Clitellar region
- B. Anal segment
- C. Peristomium
- D. All the above

Answer: D



Watch Video Solution

184. The clitellum or cingulum in Earthworm is present in

- A. 12, 13 and 14 segments
- B. 13, 14 and 15 segments
- C. 14, 15 and 16 segments

D. 16, 17 and 18 segments

Answer: C



Watch Video Solution

185. The female genital aperture in Earthworm is present ventrally on the segment

A. 10th

B. 12th

C. 14th

D. 18th

Answer: C



Watch Video Solution

186. In Earthworm, the male genital apertures are present ventrally on segment :

- A. 14th
- B. 15th
- C. 17th
- D. 18th

Answer: D



Watch Video Solution

187. In Earthworm fertilization occurs in

- A. Oviduct
- B. Spermatheca
- C. Clitellum
- D. Cocoon

Answer: D



Watch Video Solution

188. The main function of clitellum is

- A. Coccon formation
- B. Locomotion
- C. Excretion
- D. Copulation

Answer: A



Watch Video Solution

189. Clitellum of Pheretima is thick girdle that is

- A. Non-glandular around 14 - 16 segments

B. Glandular around 14 -16 segments

C. Glandular around 16 - 18 segments

D. Non-glandular around 16 - 18 segments

Answer: B



[Watch Video Solution](#)

190. Spermathecae of earthworm take part in

A. Store sperms

B. Produce sperms

C. Activate sperms

D. Bring about fertilization

Answer: A



[Watch Video Solution](#)

191. In Pheretima oxygen carrying haemoglobin occurs in

- A. Corpuscles
- B. Plasma
- C. Both corpuscles and plasma
- D. The statement is wrong

Answer: B



Watch Video Solution

192. Photoreceptors of earthworm occur on

- A. Clitellum
- B. Anal segment
- C. Dorsal surface
- D. Lateral sides

Answer: C



Watch Video Solution

193. Earthworm are

- A. Useful
- B. Harmful
- C. More useful than harmful
- D. More harmful

Answer: C



Watch Video Solution

194. Pheretima posthuma is highly useful as

- A. Their burrows make the soil loose

- B. They make the soil porous, leave their castings and take organic debris in the soil
- C. They are used as fish meal
- D. They kill the birds due to biomagnification of chlorinated hydrocarbons

Answer: B



Watch Video Solution

195. How many "hearts" are found in earthworm ?

- A. 6 pairs
- B. 4 pairs
- C. 2 pairs
- D. 1

Answer: B



[Watch Video Solution](#)

196. Earthworm helps farmer by

- A. Destroying harmful bacteria
- B. Destroying harmful insects
- C. Making soil porous and loose
- D. Both A and B

Answer: C



[Watch Video Solution](#)

197. Enteronephric nephridia of Earthworm are

- A. Pharyngeal and septal
- B. Pharyngeal
- C. Septal

D. Integumentary

Answer: A



[Watch Video Solution](#)

198. In Earthworm, ovary is situated in segment

A. 13

B. 9

C. 10

D. 26

Answer: A



[Watch Video Solution](#)

199. Typhosole of Earthworm is a device for

A. Extra secretion of digestive enzymes

B. Increasing absorptive area

C. Slowing down passage of food

D. Crushing of food

Answer: B



[Watch Video Solution](#)

200. Blood of Pheretima is

A. Blue with haemocyanin in corpuscles

B. Blue with haemocyanin in plasma

C. Red with haemoglobin in corpuscles

D. Red with haemoglobin in plasma

Answer: D



[Watch Video Solution](#)

201. The animal which does not show any metamorphosis of larval stage is

A. *Pheretima posthuma*

B. *Asterias*

C. *Musca domestica*

D. Butterfly

Answer: A



Watch Video Solution

202. Testes in earthworm are present in the segments

A. 12 and 13

B. 10 and 11

C. 14 and 15

D. 17 and 18

Answer: B



[Watch Video Solution](#)

203. In earthworm, the arrangement of blood vessels is

- A. Different in last fifteen segments
- B. Different in first thirteen segments
- C. Same throughout
- D. Different in middle thirteen segments

Answer: B



[Watch Video Solution](#)

204. In a copulatory pair of earthworms, there occur

- A. Reciprocal fertilization and external fertilization
- B. Cross fertilization and internal fertilization
- C. External fertilization and internal fertilization
- D. Cross fertilization and reciprocal fertilization

Answer: A

 [Watch Video Solution](#)

205. Chloragogen cells are involved in

- A. Digestion
- B. Excretion of water
- C. Respiration
- D. Fat storage

Answer: D

 [Watch Video Solution](#)

206. The excretory organ of earthworm are

- A. Coelom
- B. Flame cells
- C. Nephridia
- D. Gizzard

Answer: C



Watch Video Solution

207. Hemoglobin is dissolved in the blood plasma of

- A. Frog
- B. Rabbit
- C. Cockroach

D. Earthworm

Answer: D



[Watch Video Solution](#)

208. In earthworm setae are present in all segments except

- A. Clitellum
- B. First segment
- C. Clitellum and last segment
- D. Clitellum, first and last segments

Answer: D



[Watch Video Solution](#)

209. In Earthworm the effective organ for food digestion is

- A. Pharynx
- B. Buccal cavity
- C. Mouth
- D. Stomach

Answer: A

 [Watch Video Solution](#)

210. Life span of Earthworm is

- A. 1 - 3 years
- B. 2 - 8 years
- C. 3 · 5 - 10 · 5 years
- D. 6 - 8 years

Answer: C

 [Watch Video Solution](#)

211. The copulation period of earthworm is

- A. One hour
- B. Two hours
- C. Four hours
- D. About one week

Answer: A



Watch Video Solution

212. In Earthworm

- A. Ovaries are larger than testes
- B. Testes are larger than ovaries
- C. Both are equal

D. Right testes are larger than ovaries

Answer: A



Watch Video Solution

213. The dorsal vessel of earthworm is

A. Distributing

B. Collecting

C. Collecting in first thirteen segments and distributing in the rest

D. Distributing in first thirteen segments and collecting in the rest

Answer: C



Watch Video Solution

214. Spermathecal pores in Pheretima are present in segments

A. $5/6$, $6/7$, $7/8$ and $8/9$

B. $6/7$, $7/8$, $8/9$ and $9/10$

C. $1/2$, $2/3$, $3/4$ and $4/5$

D. $14/15$, $15/16$, $16/17$ and $17/18$

Answer: A



[Watch Video Solution](#)

215. Typhlosole found in Pheretima occurs in

A. Oesophagus

B. Stomach

C. Gizzard

D. Intestine

Answer: C



[Watch Video Solution](#)

216. Chromophil cells present on pharynx of Earthworm take part in secretion of

- A. Mucus
- B. Lipases
- C. Carbohydases
- D. All the above

Answer: A



Watch Video Solution

217. Which part of Cockroach has both exoskeleton and endoskeleton ?

- A. Head
- B. Thorax
- C. Abdomen

D. All the above

Answer: A



Watch Video Solution

218. Wings in cockroach do not arise from :

A. Prothorax

B. Mesothorax

C. Metathorax

D. None of the above

Answer: A



Watch Video Solution

219. Young cockroach is called

A. Maggot

B. Nymph

C. Ephyra

D. Pupa

Answer: B



Watch Video Solution

220. Structural and functional unit of compound eye of cockroach used in forming image are called

A. Eyelets

B. Fenestrae

C. Ocelli

D. Ommatidia

Answer: D

 [Watch Video Solution](#)

221. The number of spiracles in *Periplaneta americana* is

- A. 8
- B. 9
- C. 10
- D. 11

Answer: C

 [Watch Video Solution](#)

222. How is a male cockroach distinguished from a female cockroach?

- A. Longer antennae
- B. Longer abdomen
- C. Wingless body

D. All the above

Answer: B



[Watch Video Solution](#)

223. The blood of cockroach contains no respiratory pigment. It means that:

- A. It does not respire
- B. Cockroach respire anaerobically
- C. Oxygen passes to all the tissues through diffusion
- D. Oxygen reaches tissues through tracheoles

Answer: D



[Watch Video Solution](#)

224. Which is characteristic of Cockroach ?

- A. 13 - chambered heart
- B. Reduced wings
- C. Cocoon formation
- D. Segmented body

Answer: A



Watch Video Solution

225. Ten pairs of spiracles with trachea are present in

- A. Star fish
- B. Cockroach
- C. Earthworm
- D. Frog

Answer: B



Watch Video Solution

226. 13- chambered tubular heart is found in

- A. Cockroach
- B. Earthworm
- C. Frog
- D. Rabbit

Answer: A



Watch Video Solution

227. In cockroach the longest podomere is

- A. Coxa

B. Trochanter or Femur

C. Tibia

D. Tarsus

Answer: C



Watch Video Solution

228. In Cockroach moulting is induced by secretion of

A. Prothoracic gland

B. Corpora allata

C. Corpora cardiaca

D. Neurosecretory cells

Answer: A



Watch Video Solution

229. Endocrine glands of insects which secrete juvenile hormone are

- A. Corpora allata
- B. Corpora albicans
- C. Corpora myecaena
- D. All the above

Answer: A



Watch Video Solution

230. The blood of cockroach contains no respiratory pigment. It means that:

- A. Does not respire
- B. Respires anaerobically
- C. Oxygen goes to tissues by intracellular capillary system
- D. Oxygen reaches tissues directly through diffusion

Answer: D



Watch Video Solution

231. A respiratory pigment is absent in

A. Earthworm

B. Frog

C. Rabbit

D. Cockroach

Answer: D



Watch Video Solution

232. Anal style is present in

A. Male Cockroach

B. Female Cockroach

C. Both the sexes

D. None of the two

Answer: A



Watch Video Solution

233. Colleterial gland is found in

A. Male Cockroach

B. Female Cockroach

C. Both the sexes

D. None of the two

Answer: B



Watch Video Solution

234. Heart of cockroach is

- A. 10 segmented
- B. 12 segmented
- C. 13 segmented
- D. 15 segmented

Answer: C



Watch Video Solution

235. Movement of which muscles can alter the pericardial space in cockroach?

- A. Ciliary
- B. Alary
- C. Circular
- D. Longitudinal

Answer: B



[Watch Video Solution](#)

236. Spiracles of Cockroach which are larger and always kept open are

- A. First and second pairs
- B. First and third pairs
- C. First and tenth pairs
- D. Second and third pairs

Answer: B



[Watch Video Solution](#)

237. Antennae of Cockroach have

- A. Gustatory receptors

B. Auditory receptors

C. Tactile receptors

D. Tactile and olfactory receptors

Answer: D



Watch Video Solution

238. Croaking of frog is

A. Hunger call

B. Sex call for female

C. Danger call

D. Musical note

Answer: B



Watch Video Solution

239. RBCs are nucleated in

- A. Rat
- B. Cat
- C. Frog
- D. Rabbit

Answer: C



Watch Video Solution

240. Three chambered heart of frog is not as efficient as four chambered human heart because

- A. Oxygenated and deoxygenated bloods mix up
- B. Ventricle does not pump blood properly
- C. It does not hold enough blood
- D. Heart muscles are not strong

Answer: A



Watch Video Solution

241. In Frog, jelly around the eggs is deposited

- A. In water after fertilization
- B. In water during fertilization
- C. In the oviduct
- D. In the ovary

Answer: C



Watch Video Solution

242. Opening of rectum in Frog is called

- A. Coccyx

B. Cloaca

C. Anus

D. None of the above

Answer: C



Watch Video Solution

243. Structure present in man but absent in frog is

A. Salivary glands

B. Pancreas

C. Adrenal glands

D. Metanephros

Answer: A



Watch Video Solution

244. Kidney of Frog is

- A. Archinephros
- B. Pronephros
- C. Mesonephros
- D. Metanephros

Answer: C



Watch Video Solution

245. Chloragogen cells of Earthworm are similar to an organ of vertebrates

- A. Liver
- B. Lung
- C. Kidney
- D. Spleen

Answer: A



Watch Video Solution

246. Chloragogen cells are present in :

- A. Nutrition
- B. Excretion
- C. Reproduction
- D. Respiration

Answer: B



Watch Video Solution

247. Spermathecae of earthworm take part in

- A. Collection of sperms of other animal

B. Collection of sperms of the same animal

C. Sperm maturation

D. Fertilisation

Answer: A



[Watch Video Solution](#)

248. Nephrostome occurs in Earthworm

A. Septal nephridia

B. Integumentary nephridia

C. Pharyngeal and septal nephridia

D. Pharyngeal and integumentary nephridia

Answer: A



[Watch Video Solution](#)

249. Movement of coelomic fluid helps in locomotion of

- A. Hydra
- B. Frog
- C. Starfish
- D. Earthworm

Answer: D



Watch Video Solution

250. Closed circulatory system occur in

- A. Earthworm
- B. Cockroach
- C. Grasshopper
- D. Housefly

Answer: A



Watch Video Solution

251. In earthworm, mouth is situated on

- A. Prostomium
- B. Peristomium
- C. Stomium
- D. Protostomium

Answer: B



Watch Video Solution

252. In Earthworm, the dorsal blood vessel is collecting channel

- A. Behind 13th segment

B. Anterior 13 segment

C. Throughout

D. In typhlosolar region

Answer: A



Watch Video Solution

253. In Pheretima, septa are absent between segments

A. 5/6, 10/11

B. 5/6, 7/8

C. 6/7, 7/8

D. First four segments

Answer: D



Watch Video Solution

254. The enteronephric nephridia of earthworms are mainly concerned with

- A. Excretion
- B. Respiration
- C. Digestion
- D. Osmoregulation

Answer: A



[Watch Video Solution](#)

255. Blood vessels in Pheretima, which have valves are

- A. Dorsal
- B. Ventral
- C. Lateral
- D. Integumentary

Answer: A



[Watch Video Solution](#)

256. Oxygen carrying blood pigment of Earthworm is

- A. Haemocyanin
- B. Haemoglobin
- C. Haemoerythrin
- D. Chlorocruorin

Answer: B



[Watch Video Solution](#)

257. Nephridia of Pheretima are

- A. Protonephridia

B. Solenocytes

C. Micrometanephridia

D. Meganephridia

Answer: C



[Watch Video Solution](#)

258. Number of lateral hearts in Pheretima are

A. 8

B. 12

C. 16

D. 4

Answer: A



[Watch Video Solution](#)

259. Which is not correct for Earthworm

- A. It walks with a speed of 25 cm/min
- B. It can remain without oxygen for 6 - 30 hrs
- C. Life span is 3 · 5 - 10 years
- D. Setae easily dissolve in KOH

Answer: D



Watch Video Solution

260. In Pheretima coelomic fluid contains

- A. Dissolved haemoglobin
- B. Dissolved RBC
- C. Broken WBC
- D. Watery plasma

Answer: D



Watch Video Solution

261. Blood glands of Pheretima take part in

- A. Formation of red blood corpuscles
- B. Formation of phagocytes
- C. Maintenance of blood volume
- D. Maintenance of blood circulation

Answer: B



Watch Video Solution

262. Blood glands of Pheretima occur in segments

- A. 1, 2 and 3

B. 3, 4 and 5

C. 4, 5 and 6

D. 10, 11 and 12

Answer: C



[Watch Video Solution](#)

263. Phaosome in Earthworm is

A. Lens

B. Pigment

C. Nephridium

D. Hormone

Answer: A



[Watch Video Solution](#)

264. Open vascular system is absent in

- A. Housefly
- B. Cockroach
- C. Silver Fish
- D. Earthworm

Answer: D



Watch Video Solution

265. Which one will excrete silicates consumed by Earthworm along with food

- A. Intestinal cells
- B. Basal cells
- C. Chloragogen cells
- D. Flame cells

Answer: C



Watch Video Solution

266. Pharyngeal nephridia of Earthworm pheretima occur in segments

A. 3, 4 and 5

B. 4, 5 and 6

C. 5, 6 and 7

D. 6, 7 and 8

Answer: B



Watch Video Solution

267. Which one is correct

A. Flat worms are eucoelomates

- B. Fishes are radially symmetrical
- C. Birds are poikilothermic
- D. Earthworm is metamerically segmented

Answer: D



[Watch Video Solution](#)

268. Locomotion occurs in Earthworm with the help of

- A. Setae
- B. Setae and circular muscles
- C. Parapodia
- D. Setae, circular muscles and longitudinal muscles

Answer: D



[Watch Video Solution](#)

269. Open circulatory system is not of physiological hindrance in Cockroach because

- A. Heart is simple but chambered
- B. Blood is colourless
- C. Circulatory and respiratory systems are not connected
- D. Excretion occurs through malpighian tubules

Answer: C



Watch Video Solution

270. Number of fertilized eggs in ootheca of Cockroach is

- A. 16 pairs in two rows
- B. 16 in two rows
- C. 10 in one row
- D. 8 in two rows

Answer: B



Watch Video Solution

271. In cockroach, ootheca is produced by secretion of -

- (a) Collateral glands
- (b) Conglobate gland
- (c) Mushroom glands
- (d) Gynatrium

A. Conglobate gland

B. Phallic gland

C. Colleterial gland

D. Mushroom gland

Answer: C



Watch Video Solution

272. Muscles connected with working of insect heart are

- A. Alary
- B. Pericardial
- C. Striped
- D. Radial

Answer: A



Watch Video Solution

273. Number of legs found on thorax of Cockroach is

- A. 2
- B. 4
- C. 6
- D. 8

Answer: C



Watch Video Solution

274. Respiration without a distinct respiratory organ occurs in

- A. Cockroach
- B. Frog
- C. Earthworm
- D. Fish

Answer: C



Watch Video Solution

275. Abdomen of Cockroach has segments

- A. 6

B. 10

C. 11

D. 12

Answer: B



Watch Video Solution

276. Number of malpighian tubules present in Cockroach is

A. 50 - 60

B. 80 - 90

C. 100 - 150

D. 200 - 250

Answer: C



Watch Video Solution

277. Tubular heart of cockroach has how many chambers ?

- A. 4
- B. 10
- C. 13
- D. 15

Answer: C



Watch Video Solution

278. Ommatidia serve the purpose of photoreception in

- A. Cockroach
- B. Frog
- C. Humans
- D. Sunflower

Answer: A



Watch Video Solution

279. Which of the following is a hermaphrodite ?

- A. Cockroach
- B. Earthworm
- C. Ant
- D. Termite

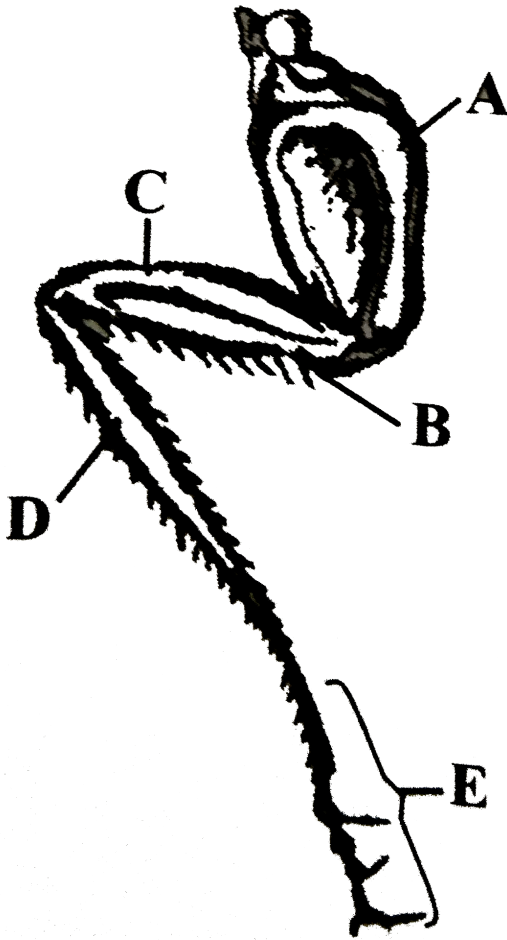
Answer: C



Watch Video Solution

280. In the given diagram of a leg of cockroach, parts have been indicated by alphabets. Select the answer in which these alphabets have been

correctly matched with the parts which they indicate



A. a = coxa, b = tibia, c=tarsus, d=femur, e=trochanter

B. a=coxa, b=femur, c=trochanter, d=tarsus, e=tibia

C. a=coxa, b=tarsus, c=femur, d=tibia, e=trochanter

D. a=coxa, b=trochanter, c=femur, d=tibia, e=tarsus

Answer: D



Watch Video Solution

281. Chloragogen cells are involved in

- A. Respiratory only
- B. Circulatory only
- C. Polyfunctional
- D. Excretory only

Answer: C



Watch Video Solution

282. Which one does not occur in Earthworm

- A. Septal nephridia

B. Macronephridia

C. Integumentary nephridia

D. Pharyngeal nephridia

Answer: B



Watch Video Solution

283. in frog oviduct is formed by

A. Wolffian duct

B. Bidder's canal

C. Metanephric duct

D. Mullerian duct

Answer: D



Watch Video Solution

284. Which structure of Pheretima plays the role of liver ?

- A. Calciferous cells
- B. Chloragogen cells
- C. Clitellar cells
- D. Gland cells

Answer: B



Watch Video Solution

285. Peculiar pungent smell of Cockroach is secretion of

- A. Pheromone
- B. Periplaneta
- C. Dermal glands
- D. Cervical glands

Answer: C



Watch Video Solution

286. Cockroach of genus Blatta is called

- A. German Cockroach
- B. Oriental Cockroach
- C. American Cockroach
- D. Australian Cockroach

Answer: B



Watch Video Solution

287. Which one function as primary organiser in Frog ?

- A. Dorsal tip of gastrulla

- B. Grey crescent
- C. Chordamesoderm of gastrula
- D. Any of the above

Answer: B

 [Watch Video Solution](#)

288. Brown colour of Earthworm is due to

- A. Melanin
- B. Porphyrin
- C. Haemoglobin
- D. Both A and B

Answer: B

 [Watch Video Solution](#)

289. Type of feeding in Earthworm is

- A. Fluid feeding
- B. Filter feeding
- C. Detritus feeding
- D. Tentacle

Answer: C



Watch Video Solution

290. Male genital aperture of earthworms is located in the segment

- A. 14
- B. 18
- C. 19
- D. 22

Answer: C



Watch Video Solution

291. Number of pairs of valves found in lateral oesophageal heart of Pheretima is

- (a) 1
- (b) 2
- (c) 3
- (d) 4

A. 1

B. 2

C. 3

D. 4

Answer: C



Watch Video Solution

292. Match the components of column I and II, both related to Pheretima :

Column I

Column II

(i) Yellow cells

(a) Primordial germ cells

(ii) Oval sphincter pores

(b) Totipotent

(iii) Basal cells

(c) Deamination

(iv) Parietal

(d) Septum

A. (1) (i)-(c), (ii)-(d), (iii)-(b), (iv)-(a)

B. (2) (i)-(c), (ii)-(b), (iii)-(d), (iv)-(a)

C. (3) (i)-(c), (ii)-(a), (iii)-(b), (iv)-(d)

D. (i)-(d), (ii)-(a), (iii)-(b), (iv)-(a)

Answer: A



Watch Video Solution

293. In Earthworm the dorsal wall of the intestine from the 26th segment to 95th segment forms a median internal fold called

A. (a) Trochophore

B. (b) Typhlosole

C. (c) Clitellum

D. (d) Trachea

Answer: B



Watch Video Solution

294. Chloragogen cells resemble the following in function

A. Collar cells

B. Plasma cells

C. Flame cells

D. Mesophyll cells

Answer: C



Watch Video Solution

295. In Earthworm, cocoon is formed by

- A. Epidermal muscles
- B. Setae
- C. Cuticle
- D. Clitellum

Answer: D



Watch Video Solution

296. How many pairs of spiracles are found in cockroach?

- A. 5 thoracic, 3 abdominal
- B. 3 thoracic, 5 abdominal
- C. 8 thoracic, 2 abdominal
- D. 2 thoracic, 8 abdominal

Answer: D



Watch Video Solution

297. In cockroach, conglobate glands occur in

- A. Females
- B. Males
- C. Nymph
- D. Both A and B

Answer: B



Watch Video Solution

298. Heart of Cockroach is

- A. Myogenic

B. Neuromyogenic

C. Neurogenic

D. None of the above

Answer: C



Watch Video Solution

299. Enzyme found in saliva of Cockroach is

A. Amylase

B. Cellulase

C. Protease

D. All the above

Answer: A



Watch Video Solution

300. In Cockroach enzymes cellulase is produced by

- A. Saliva
- B. Lining cells of midgut
- C. Bacteria in midgut
- D. Cellulose is not metabolised

Answer: C



Watch Video Solution

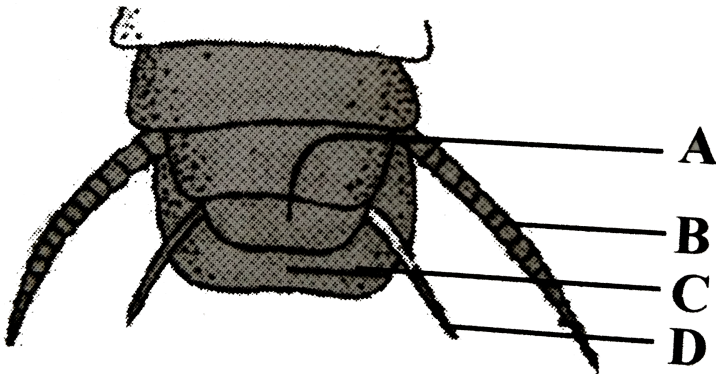
301. Number of segments in the anal cerci of Cockroach is

- A. 12
- B. 15
- C. 18
- D. 10

Answer: B

 Watch Video Solution

302. The given figure represents posterior region of male cockroach. Identify the parts labelled as A,B,C and D



A. a - 9th sternum, b - anal style, c - 10th tergum, d - anal circus

B. a - anal style, b - anal circus, c - 10th tergum, d - 9th sternum

C. a - 9th sternum, b - anal circus, c - 10th tergum, d - anal style

D. a - anal circus, b - 9th sternum, c - 10th tergum, d - anal style

Answer: C



[Watch Video Solution](#)

303. The adhesive pads (soft-pada) present in legs of cockroaches are

- A. Galeae
- B. Lacineae
- C. Glossae
- D. Plantulae

Answer: D



[Watch Video Solution](#)

304. frog is amphibian because

- A. It has no tail
- B. It has lungs
- C. Its tadpole is aquatic

D. It lives both on land and water

Answer: D



Watch Video Solution

305. Which one is useful in metamorphosis of tadpole into frog?

A. Aldosterone

B. Thyroxine

C. Pituitary

D. Oxytocin

Answer: B



Watch Video Solution

306. Gizzard of cockroach is a part of

A. Respiratory system

B. Digestive system

C. Immune system

D. Circulatory system

Answer: B



[Watch Video Solution](#)

307. Number of segments present in Earthworm is

A. 85 - 400

B. 100 - 200

C. 20 - 95

D. 115 - 120

Answer: D



[Watch Video Solution](#)

308. Most animals are

- (A) Haploid
- (B) Diploid
- (C) Heterotrophic
- (D) Both B and C

A. Haploid

B. Diploid

C. Heterotrophic

D. Both B and C

Answer: D



Watch Video Solution

309. give the locations of hepatic caeca in a cockroach , what is their function ?

A. Glucose and amino acids

B. Lipids

C. Glucose

D. Both B and C

Answer: A



Watch Video Solution

310. Tadpoles of frog can be made to grow as giant sized tadpoles, if they are

A. Administered large amount of thyroxine

B. Administered antithyroid substance like thiourea

C. Reared on a diet rich in egg yolk

D. Reared on a diet rich in egg yolk

Answer: B

 [Watch Video Solution](#)

311. Number of lateral hearts in Pheretima are

- A. 2
- B. 6
- C. 8
- D. 12

Answer: C

 [Watch Video Solution](#)

312. Axoloti larva of Amblyostoma normally fails to metamorphose due to

- A. Lack of Ca and Mg in water
- B. Absence of phosphorus in water
- C. High concentration of iodine in water

D. Lack of iodine in water

Answer: D



[Watch Video Solution](#)

313. The correct arrangement of leg parts is

- A. Tibia, trochanter, femur, tarus and coxa
- B. Trochanter, coxa, tibia, femur and tarasus
- C. Coxa, femur, trochanter, tibia and tarsus
- D. Coxa, trochanter, femur, tibia and tarsus

Answer: D



[Watch Video Solution](#)

314. Which of the following is the correct statement about the circulatory system of cockroach

- A. In has closed type of circulatory sytem
- B. It has a compicated type of circulatory system
- C. It has 13-chambered heart with a pair of ostia in each chamber
- D. It takes place without participation of tissues

Answer: C



Watch Video Solution

315. In cockroach, the anterior wings are called

- A. Elytra
- B. Pedipalps
- C. Antenna
- D. Chelicera

Answer: A



Watch Video Solution

316. In Earthworm, gizzard occurs in segment

(a) 5

(b) 6

(c) 8

(d) 10

A. 5

B. 6

C. 8

D. 10

Answer: C



Watch Video Solution

317. In the 4th 5th and 6th segments of earthworms lying above pharyngeal mass and connected with pharyngeal glands are found small, red coloured follicular bodies called

- A. Septal glands
- B. Blood glands
- C. Salivary glands
- D. Nephridia

Answer: B



Watch Video Solution

318. In Pheretima, septa are absent between which segments

- A. 3/4 and 9/10
- B. 4/5 and 8/9
- C. 5/6 and 7/8

D. $\frac{6}{7}$ and $\frac{7}{8}$

Answer: A



[Watch Video Solution](#)

319. In cockroach, larval and nymphal characters are maintained by

A. Ecdysone

B. Salivary glands

C. Parotid glands

D. Juvenile hormone

Answer: D



[Watch Video Solution](#)

320. In Earthworm, neurons are

- (a) Sensory
- (b) Motor
- (c) Both a and b
- (d) Mixed

A. Sensory

B. Motor

C. Associate

D. All the above

Answer: D



Watch Video Solution

321. In earthworm the characteristic internal median fold of dorsal wall of the intestine called typhlosole is present in

A. 20-90 segments

B. 26-35 segments

C. 20-95 segments

D. 21-100 segments

Answer: B



[Watch Video Solution](#)

322. Cockroach is

A. Uricotelic

B. Ureotelic

C. Ammonotelic

D. Both B and C

Answer: A



[Watch Video Solution](#)

323. In Earthworm, the spermathecae occur in

- A. 6-9 segments
- B. 6-10 segments
- C. 6-11 segments
- D. 5-8 segments

Answer: A



Watch Video Solution

324. Urinogenital duct of male Frog opens into

- (a) Rectum
- (b) Cloaca
- (c) Urinary bladder
- (d) Intestine

A. Rectum

B. Cloaca

C. Urinary bladder

D. Intestine

Answer: B



Watch Video Solution

325. Male Cockroach is identified by the presence of

A. Green gland

B. Anal style

C. Anal cercus

D. Broad abdomen

Answer: B



Watch Video Solution

326. In the given diagram, what does "A" represent?



- A. Ventral vessel
- B. Dorsal vessel
- C. Heart
- D. Lateral vessel

Answer: B



Watch Video Solution

327. A pair of stink gland is found in

- A. 4th and 5th terga
- B. 5th and 6th terga
- C. 5th and 6th sterma
- D. 4th and 5th sterma

Answer: B



Watch Video Solution

328. Salivary mass of Earthworm occurs in

- A. Dorsal wall of buccal cavity
- B. Ventral wall of buccal cavity
- C. Pharyngeal wall
- D. Gizzard

Answer: C



Watch Video Solution

329. Somites/metameres/segments present in the body of Earthworm are

A. 60 - 80

B. 80 - 100

C. 100 - 120

D. 120 - 160

Answer: C



Watch Video Solution

330. In which of the following animals Hb (haemoglobin) is found dissolved in plasma

A. Earthworm

B. Cockroach

C. Planaria

D. Sepia

Answer: A



[Watch Video Solution](#)

331. Bidder's canal is found in

A. Testis of Frog

B. Ovary of Frog

C. Kidney of Frog

D. All the above

Answer: C



[Watch Video Solution](#)

332. Pylangium in frog is found in

- A. Conus arteriosus
- B. Sinus venosus
- C. Atrium
- D. Ventricle

Answer: A



Watch Video Solution

333. A nephron is devoid of loop of Henle in

- A. Man
- B. Rabbit
- C. Frog

D. Dog

Answer: C



Watch Video Solution

334. Columella auris occurs in

A. Rabbit

B. Frog

C. Man

D. All the above

Answer: B



Watch Video Solution

335. Which one is present in integument of Frog but not in mammals ?

- (a) Sweat glands
- (b) Dermis
- (c) Stratum germinativum
- (d) Mucous glands

A. Sweat glands

B. Dermis

C. Stratum germinativum

D. Mucous glands

Answer: D



Watch Video Solution

336. Match the columns :

Pheretima	Cell Features
<i>a</i> Phagocytes	1. Small cells with yellowish granules
<i>b</i> Chloragogen cells	2. Elongated cells
<i>c</i> Circular cells	3. Largest cells
<i>d</i> Mucocytes	4. Cells with surface markings

A. a-3, b-4, c-1, d-2

B. a-2, b-1, c-4, d-3

C. a-3, b-1, c-4, d-2

D. a-4, b-3, c-2 d-1

Answer: C



Watch Video Solution

337. Arrange blood flow from ventral to dorsal blood vessels

(a) Dorsointestinal blood vessels

(b) External intestinal plexus

(c) Internal intestinal plexus

(d) Ventrointestinal blood vessel

A. d, b, a, c

B. c, a, b, d

C. b, c, d, a

D. d, b, c, a

Answer: D



Watch Video Solution

338. Earthworms have no skeleton but during burrowing, the anterior end becomes turgid and acts as a hydraulic skeleton. It is due to

A. Gut peristalsis

B. Setae

C. Coelomic fluid

D. Blood

Answer: C



Watch Video Solution

339. A detritivorous animal of economic importance is

(A) Leech

(B) Earthworm

(C) Fowl

(D) Caterpillar larva

A. Leech

B. Earthworm

C. Fowl

D. Caterpillar larva

Answer: B



Watch Video Solution

340. The number of abdominal segments in male and female cockroach is

(a) 10, 10

(b) 9, 10

(c) 10, 11

(d) 8, 10

A. 10, 10

B. 9, 10

C. 10, 11

D. 8, 10

Answer: A



Watch Video Solution

341. Which is correct ?

- A. Rat- Left kidney is slightly higher in position than the right one
- B. Cockroach - 10 pairs of spiracles (2 thorax, 8 abdomen)
- C. Earthworm - Alimentary canal has pharynx, oesophagus, stomach, gizzard and intestine
- D. Frog - Body divisible into head, neck and trunk

Answer: B



Watch Video Solution

342. In frog caudal vertebrae are fused to form

- A. Coccyx
- B. Pogostyle
- C. Urostyle
- D. Prehensile tail

Answer: C



[Watch Video Solution](#)

343. Cloaca of Frog is common chamber for urinary tract, reproductive tract and

- (a) Alimentary canal
- (b) Portal system
- (c) Hepatic portal vein
- (d) Notochord

A. Alimentary canal

B. Portal system

C. Hepatic portal vein

D. Notochord

Answer: A



[Watch Video Solution](#)

344. In leg of Cockroach, trochanter is followed by

- A. Coxa
- B. Femur
- C. Tarsus
- D. Tibia

Answer: B



Watch Video Solution

345. The egg of frog is

- A. Microlecithal and homolecithal
- B. Polylecithal and centrolecithal
- C. Moderately telolecithal and mesolecithal
- D. Heavily telolecithal and polylecithal

Answer: C



Watch Video Solution

346. Nitrogenous waste in the Malpighian tubule flows into

- A. Haemocoel
- B. Intestine
- C. Vacuole
- D. Duodenum

Answer: B



Watch Video Solution

347. Poikilotherms are also known as

- A. Isotherms

B. Endotherms

C. Heterotherms

D. Ectotherms

Answer: D



Watch Video Solution

348. Which is absent in blood of Cockroach ?

A. Plasma

B. Respiratory pigment

C. Nutrients

D. Blood cells

Answer: B



Watch Video Solution

349. Earthworm are

- A. Ureotelic when plenty of water is available
- B. Uricotelic when plenty of water is available
- C. Uricotelic under conditions of water scarcity
- D. Ammonotelic when plenty of water is available

Answer: D



Watch Video Solution

350. The open circulatory system is found in

- A. Octopus
- B. Pheretima
- C. Periplaneta
- D. Rana

Answer: C



Watch Video Solution

351. Tadpole of Frog is

- A. Ureotelic
- B. Uricotelic
- C. Ammonotelic
- D. Aminotelic

Answer: C



Watch Video Solution

352. Different colour of frog skin are controlled by :

- A. Hormones

B. Melanocytes

C. Nervous system

D. Both B and C

Answer: A



[Watch Video Solution](#)

353. The anterior addominal vein in frog is formed by the union of

A. Sciatic veins

B. Pelvic veins

C. Femoral veins

D. Renal veins

Answer: B



[Watch Video Solution](#)

354. In earthworm

- A. Integumentary and pharyngeal nephridia are exonephric
- B. Pharyngeal and septal nephridia are exonephric
- C. Integumentary and septal nephridia are enteronephric
- D. Pharyngeal and septal nephridia are enteronephric

Answer: D



Watch Video Solution

355. Which of the following is not a characteristic feature of frog ?

- A. Skin is moist and slimy
- B. Each of the forelimbs and hindlimbs ends in five digits
- C. Hepatic and renal portal systems are present
- D. Skin, buccal cavity and lungs are respiratory organs

Answer: B



Watch Video Solution

356. If a live earthworm is pricked with a needle on its outer surface without damaging its gut, the fluid that comes out is

- A. Coelomic fluid
- B. Excretory fluid
- C. Slimy mucus
- D. Haemolymph

Answer: A



Watch Video Solution

357. Which one of the following correctly describes the location of some body parts in the earthworm (Pheretima) ?

- A. Two pairs of accessory glands in 16 - 18 segments
- B. Two pairs of testes in 10th and 11th segments
- C. Four pairs of spermathecae in 4 - 7 segments
- D. One pair of ovaries attached over septum 14 - 15 segments

Answer: B

 [Watch Video Solution](#)

358. The gas exchange surface in an earthworm is

- A. Tracheae
- B. Gills
- C. Skin
- D. Ctenidia

Answer: C

 [Watch Video Solution](#)

359. The blood of cockroach contains no respiratory pigment. It means that:

- A. Haemoglobin
- B. Plasma
- C. Treholse
- D. Haemocytes

Answer: A



Watch Video Solution

360. The circulatory system of cockroach

- A. On dorsal side with 13 unit heart in abdomen
- B. On dorsal side with 10 abdominal and 3 thoracic units of heart
- C. On ventral side with 13 unit heart in abdomen

D. On ventral side with 10 abdominal and 3 thoracic units of heart

Answer: B



Watch Video Solution

361. The phenomena of spawning and amplexus occur in

A. *Rana hexadactyla*

B. *Pavo cristatus*

C. *Felis domestica*

D. *Naja naja*

Answer: A



Watch Video Solution

362. Which one of the following species of earthworm is not recommended for vermicomposting ?

- A. *Eudrilus eugeniae*
- B. *Eisenia fetida*
- C. *Perionyx excavatus*
- D. *Pheretima posthuma*

Answer: D



Watch Video Solution

363. Cockroach is

- A. Diurnal and herbivorous
- B. Nocturnal and carnivorous
- C. Diurnal and omnivorous
- D. Nocturnal and omnivorous

Answer: D



[Watch Video Solution](#)

364. Which one of the following species of earthworm is not recommended for vermicomposting ?

- A. *Lumbricus terrestris*
- B. *Eisenia fetida*
- C. *Aporrectodea limicola*
- D. *Arctiostrotus vancouverensis*

Answer: B



[Watch Video Solution](#)

365. The lateral hearts in earthworms have

- A. Two pairs of valves, segments 6 and 11
- B. Three pairs of valves, segments 8 and 10
- C. Four pairs of valves, segments 7 and 9
- D. Four pairs of valves segments 6 and 8

Answer: C

 [Watch Video Solution](#)

366. In the mouth parts of cockroach the galea and lacinia form parts of the

- A. Labrum
- B. Labium
- C. Mandible
- D. Maxilla

Answer: D

 [Watch Video Solution](#)

367. Number of spinal nerves in frog is

- A. 8 pairs
- B. 10 pairs
- C. 11 pairs
- D. 12 pairs

Answer: B

 [Watch Video Solution](#)

368. The head of cockroach lacks

- A. Cardo
- B. Gena
- C. Frons

D. Trochanter

Answer: D



[Watch Video Solution](#)

369. Mushroom gland is a part of

- A. Male reproductive system of Cockroach
- B. Female reproductive system of Cockroach
- C. Male reproductive system of Rabbit
- D. Female reproductive system of Rabbit

Answer: A



[Watch Video Solution](#)

370. Oxygen-carrying respiratory pigment of cockroach and other insect is

A. Malpadin

B. Vanadium

C. Haemocyanin

D. None of the above

Answer: D



[Watch Video Solution](#)

371. How many ova are laid at a time by a mature female frogs ?

A. 3500 - 4500

B. 2500 - 3000

C. 1450 - 1500

D. 500 - 1000

Answer: A



[Watch Video Solution](#)

372. In Frog, cloacal aperture is used for elimination of

- A. Urine
- B. Gametes
- C. Faecal matter
- D. All the above

Answer: D



Watch Video Solution

373. Metanephridia of Earthworm are

- A. Homologous to flame cells
- B. Analogous to flame cells
- C. Connected with respiration

D. Helpful in copulation

Answer: B



[Watch Video Solution](#)

374. Which of the following is a more accurate statement about respiration

- A. O_2 from atmosphere diffuses into blood and combines with haemoglobin of blood plasma
- B. Blood does not have any important role in O_2 transport
- C. Respires anaerobically
- D. O_2 diffused from air combines with haemoglobin of RBCs.

Answer: A



[Watch Video Solution](#)

375. Cockroach crushes food with the help of its

- A. Labium
- B. First maxillae
- C. Mandibles
- D. Antennae

Answer: C



Watch Video Solution

376. Maximum number of ganglia are present in Cockroach in

- A. Neck
- B. Thorax
- C. Abdomen
- D. Head

Answer: C



Watch Video Solution

377. Single large blood vessel in Cockroach is

- A. Lateral artery
- B. Ventral aorta
- C. Posterior aorta
- D. Anterior aorta

Answer: D



Watch Video Solution

378. Compound eyes are found in

- A. Earthworm

B. Cockroach

C. Roundworm

D. Flatworm

Answer: B



Watch Video Solution

379. In cockroach, the gizzard contains

A. Four teeth

B. Six teeth

C. Eight teeth

D. Five teeth

Answer: B



Watch Video Solution

380. Which reference to external features of Cockroach, which among the following statements is not correct?

- A. It has pulvillus between claws
- B. Hind wings are protective and are not useful in flight
- C. Fore wings are elytra
- D. Gonapophyses help in copulation

Answer: B



Watch Video Solution

381. About how many times does the nymph of then *Periplaneta americana* undergo moulting before becoming an adult ?

- A. 2
- B. 3
- C. 4

Answer: D



Watch Video Solution

382. Read the statements regarding frog. Which of the statements is/are correct and incorrect ?

- (i) The medulla oblongata passes out through foramen of Monoro and continues into the spinal cord
- (ii) Vasa efferentia are 10-12 in number that arise from the testes
- (iii) Ovaries have no functional connection with kidneys
- (iv) Frogs are uricotelic

A. a, b, c correct, d incorrect

B. a, b correct , c, d incorrect

C. b, c correct, a, d incorrect

D. b, c, d correct, a incorrect

Answer: C



Watch Video Solution

383. Fertilized eggs of *Periplaneta americana* are encased in

- A. Ootheca
- B. Cocoon
- C. Phallomere
- D. Genital chamber

Answer: A



Watch Video Solution

384. How is humic acid present in soil neutralised in earthworm stomach?

- A. Intestinal caecum

B. Typhlosole

C. Gizzard

D. Calciferous glands

Answer: D



Watch Video Solution

385. Which of the following happens in the common cockroach ?

A. Nitrogenous excretory product in urea

B. Food is ground by mandibles and gizzard

C. Malpighian tubules are excretory organs that project out from
coelom

D. Oxygen is transported by haemoglobin in blood

Answer: B



Watch Video Solution

386. Special feature of Pheretima is

- A. S - shaped setae are defensive weapons against enemy
- B. It has long, dorsal tubular heart
- C. Fertilization of eggs occurs inside the body
- D. Typhlosole increases effective absorptive area for digested food

Answer: D



Watch Video Solution

387. Which one of the following structures in Pheretima is correctly matched with its function ?

- A. Clitellum - secretes cocoon
- B. Gizzard - absorbed digested food
- C. Setae - defence against predators

D. Typhlosole - storage of extra nutrients

Answer: A



[Watch Video Solution](#)

388. Ureters act as urinogenital ducts in

A. Human females

B. Human males

C. Male frogs

D. Both male and female frogs

Answer: C



[Watch Video Solution](#)

389. Consider the following four statements (A-D) related to the common frog *Rana tigrina*, and select the correct option stating which ones are true(T) and which ones are false(F).

Statements :

(A) On dry land it would die due to lack of O₂ if its mouth is forcibly kept closed for a few days

(B) it has four-chambered heart

(C) On dry land it turns uricotelic from ureotelic

(D) Its life-history is carried out in pond water

A. *a* *b* *c* *d*
(A) T F F T

B. *a* *b* *c* *d*
(B) T T F F

C. *a* *b* *c* *d*
(C) F F T T

D. *a* *b* *c* *d*
(D) F T T F

Answer: A



Watch Video Solution

390. Given below are assertion and reason. Point out if

Assertion : Blood of cockroach is colourless haemolymph with no respiratory pigments

Reason : Respiration in Cockroach occurs through diffusion in haemolymph

- A. Both are true with reason being correct explanation
- B. Both are true but reason is not correct explanation
- C. Assertion is true but reason is wrong
- D. Both are wrong

Answer: C



[Watch Video Solution](#)

391. In cockroaches, digestive juice is secreted by the

- A. Gizzard

B. Malpighian tubules

C. Crop

D. Hepatic caeca

Answer: D



Watch Video Solution

392. A tactile organ of Cockroach is

A. Antennae

B. Ommatidia

C. Fenestrae

D. Anal cerci

Answer: A



Watch Video Solution

393. The ingrowth of exoskeleton in the head of cockroach is called

- A. Notum
- B. Pleura
- C. Tentorium
- D. Apodemes

Answer: C



Watch Video Solution

394. Which of the following is absent in the coelomic fluid of earthworm ?

- A. Proteins
- B. Corpuscles
- C. Haemoglobin
- D. Salts

Answer: C



Watch Video Solution

395. What is correct about breathing in adult Frog

- A. In water - skin, gills
- B. In water - skin, buccal cavity
- C. On land - skin, lungs, gills
- D. On land - skin, buccal cavity

Answer: D



Watch Video Solution

396. Removal of which ganglia results in loss of motor control in Pheretima

- A. Sub pharyngeal ganglia
- B. Suboesophageal ganglia
- C. Suprapharyngeal ganglia
- D. Supra-oesophageal ganglia

Answer: A

 [Watch Video Solution](#)

397. Identify the set of collecting and distributing blood vessels in Pheretima

- A. Latero - oesophageal blood vessel and subneural blood vessel and commissural blood vessels
- B. Dorsal blood vessel and commissural blood vessels
- C. Dorsal blood vessel and ventral blood vessel
- D. Ring vessels and anterior loops

Answer: B



Watch Video Solution

398. Arrange the parts of alimentary canal of cockroach in correct order :

I. Stomodaeal valve. II. Crop. III. Ileum. IV Proventriculus. V. Mesenteron. VI. Colon.

A. IV \rightarrow II \rightarrow V \rightarrow I \rightarrow III \rightarrow VI

B. IV \rightarrow II \rightarrow I \rightarrow III \rightarrow VI \rightarrow V

C. II \rightarrow IV \rightarrow I \rightarrow V \rightarrow III \rightarrow VI

D. II \rightarrow IV \rightarrow I \rightarrow III \rightarrow V \rightarrow VI

Answer: C



Watch Video Solution

399. Thermoreceptor sensillae of cockroach are located on

A. Antennae, maxillary and labial palps

B. Tarsus of leg

C. Anal cerci and anal styles

D. Labrum, maxillae and labium

Answer: B



Watch Video Solution

400. Arrange ganglia of autonomous nervous system of cockroach in correct sequence from anterior to posterior end

(a) Frontal ganglion

(b) Proventricular ganglion

(c) Hypocerebral ganglion

(d) Visceral ganglion

A. a-c-d-b

B. a-d-c-b

C. b-c-d-a

D. b-d-a-c

Answer: A



Watch Video Solution

401. In T.S. Pheretima, the correct sequence of body wall layers from outer to inner side (a) Circular muscles (b) Parietal peritoneum (c) Epidermis (d) Cuticle (e) Longitudinal muscles

A. $c \rightarrow b \rightarrow e \rightarrow a \rightarrow d$

B. $d \rightarrow c \rightarrow e \rightarrow a \rightarrow b$

C. $d \rightarrow c \rightarrow a \rightarrow e \rightarrow b$

D. $d \rightarrow b \rightarrow a \rightarrow e \rightarrow c$

Answer: C



Watch Video Solution

402. Match the lists with reference to Pheretima

I		II	
(a) Pharyngeal nephridia	(i)	14th segment	
(b) Stomach	(ii)	18th segment	
(c) Anterior loops	(iii)	9th and 14th segments	
(d) Male genital apertures	(iv)	4th, 5th and 6th segments	
	(v)	10th and 11th segments	

- A. *a* *b* *c* *d*
(A) (*iv*) (*i*) (*v*) (*iii*)
- B. *a* *b* *c* *d*
(B) (*i*) (*iii*) (*ii*) (*v*)
- C. *a* *b* *c* *d*
(C) (*v*) (*iv*) (*iii*) (*i*)
- D. *a* *b* *c* *d*
(D) (*iv*) (*iii*) (*v*) (*ii*)

Answer: D



Watch Video Solution

403. Given below are assertion and reason. Point out if

Assertion : A mutual exchange of sperms occurs between the earthworms during mating.

Reason : Mature sperms, egg cells and nutritive fluid are deposited in cocoons produced by gland cells of clitellum

- A. Both are correct with reason being correct explanation
- B. Both are true but reason is not correct explanation
- C. Assertion is true but reason is wrong
- D. Both are wrong

Answer: B



[Watch Video Solution](#)

404. In open vascular system, the circulating fluid is known as

- A. Blood
- B. Perilymph
- C. Haemolymph
- D. Lymphatic fluid

Answer: C



Watch Video Solution

405. Eggs of Cockroach give rise to

- A. Nymph
- B. Larva
- C. Caterpillar
- D. Pupa

Answer: A



Watch Video Solution

406. Select the correct option about cockroach

- A. Males bear short oval styles not present in females

- B. Nervous system comprises a dorsal nerve cord and ten pairs of ganglia
- C. Fore wings are tegmina which are used in flight
- D. Malpighian tubules convert nitrogenous wastes into urea

Answer: A

 [Watch Video Solution](#)

407. Correct path of air during respiration of Periplaneta is

- A. Mouth, bronchial tube, trachea, oxygen enters cells
- B. Spiracles in prothorax, tracheoles, trachea, oxygen diffuses into cells
- C. Hypopharynx, mouth, pharynx, trachea, tissues
- D. Spiracles in metathorax, trachea, tracheoles, oxygen diffuses into cells

Answer: D



[Watch Video Solution](#)

408. Respiratory organs of Cockroach are called

- A. Maxillae
- B. Spiracles
- C. Mandibles
- D. Labrum

Answer: B



[Watch Video Solution](#)

409. What external changes are visible after the last moult of a cockroach nymph?

A. Labium develops

B. Mandible becomes harder

C. Anal cerci develop

D. Both fore wings and hind wings develop

Answer: D



Watch Video Solution

410. Flow of haemolymph in Cockroach is

A.

Heart → Ostia → Perivisceral sinus → Pericardial sinus → Head

B.

Heart → Pericardial sinus → Head → Perivisceral sinus → Ostia

C.

Heart → Head → Perivisceral sinus → Pericardial sinus → Ostia

D.

Heart → Head → Perivisceral sinus → Ostia → Pericardial sinus

Answer: C



[Watch Video Solution](#)

411. Which part of Cockroach leg is attached to thorax ventrally

A. Trochanter

B. Claw

C. Femur

D. Coxa

Answer: D



[Watch Video Solution](#)

412. Identify the wrong statement regarding earthworm

- A. The first body segment is called peristomium
- B. Prostomium contains the mouth
- C. Clitellum is made up of glandular tissue
- D. Prostomium is sensory in function

Answer: B



Watch Video Solution

413. The sensory papillae in frogs are associated with

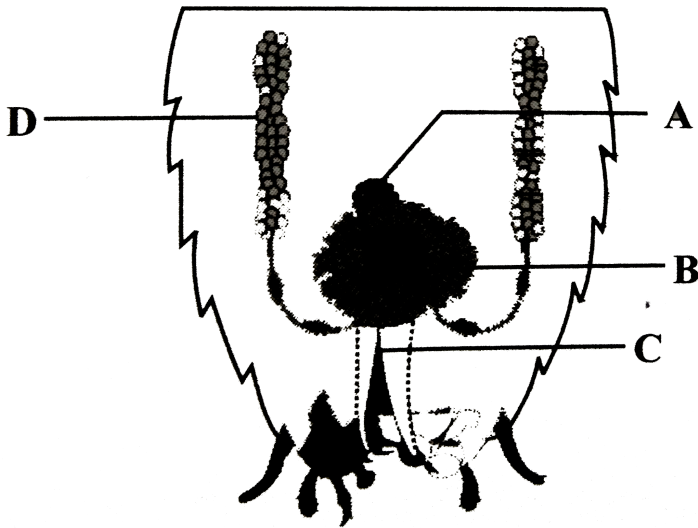
- A. Smell
- B. Hearing
- C. Respiration
- D. Touch

Answer: D

[Watch Video Solution](#)

414. Study the given figure of reproductive system of male cockroach

In which of the labelled parts are sperms stored ?



A. a- phallic gland, b- small tubules, c- vas deferens, d- ejaculatory duct,
e- right phallomere

B. a- phallic gland, b- vas deferens, c- small tubules, d- ejaculatory duct,
e- right phallomere

C. a- phallic gland, b-ejaculatory duct, c-vas deferens, d- right phallomere, e- small tubules

D. a- small tubules, b- phallic gland, c- vas deferens, d- ejaculatory duct, e- testis

Answer: A

 [Watch Video Solution](#)

415. Read the statements regarding frog and choose the correct option

1. Frog never drinks water but absorbs water through its skin
2. Hind limbs of frog end in four digits
3. Male frogs have vocal sacs
4. Male frogs have a copulatory pad on the second digit of fore limb
5. Frog has bilobed tongue

A. 2 and 5 alone are correct

B. 5 alone is correct

C. 1, 3 and 5 alone are correct

D. 1 and 4 alone are correct

Answer: C



Watch Video Solution

416. In Periplaneta, which one helps in nourishing the sperms

A. Ejaculatory duct

B. Vas deferens

C. Utriculi majores

D. Utriculi breviores

Answer: D



Watch Video Solution

417. In Periplaneta, ductus ejaculatorius of male reproductive system lies in

- A. 7th segment
- B. 8th segmet
- C. 5th segment
- D. 6th segment

Answer: A



[Watch Video Solution](#)

418. Statement a. : Secretion of colleterial gland forms the egg case in Cockroach

Statement b. : The development of Cockroach is hemimetabolous

- A. Both the statements, a and b, are correct and b is the reason for a

B. Both the statements, a and b, are correct but b is not the reason for

a

C. Statement a is correct but statement b is wrong

D. Statement b is correct but statement a is wrong

Answer: C



[Watch Video Solution](#)

419. Respiration in adult frog is

A. Cutaneous

B. Buccal

C. Pulmonary

D. All the above

Answer: D



[Watch Video Solution](#)

420. In earthworm, efficiency of food absorption is due to structure

- A. Villi
- B. Typhlosole
- C. Caecum
- D. Stomach

Answer: B



Watch Video Solution

421. In cockroach , the common duct of salivary reservoir opens at the base of the

- A. Pharynx
- B. Maxilla
- C. Mandible

D. Hypopharynx

Answer: D



[Watch Video Solution](#)

422. The total number of podomeres in the leg of Cockroach is

A. 5

B. 6

C. 7

D. 8

Answer: A



[Watch Video Solution](#)

423. Which is not a sensory structure in Cockroach

A. Antennae

B. Eyes

C. Anal cerci

D. Proventriculus

Answer: D



Watch Video Solution

424. Choose the wrongly matched pair regarding the position of reproductive structures in earthworm

A. Testes - 10th and 11th segments

B. Spermathecae - 6th to 9th segments

C. Male genital pore - 9th segment

D. Female genital pore - 14th segment

Answer: C

 [Watch Video Solution](#)

425. In Cockroach, the arthroal membrane

- A. Forms the hind wings
- B. Covers the compound eyes
- C. Forms the hypopharynx
- D. Joins the sclerites

Answer: D

 [Watch Video Solution](#)

426. Choose the wrong statement regarding the circulatory system of Frog

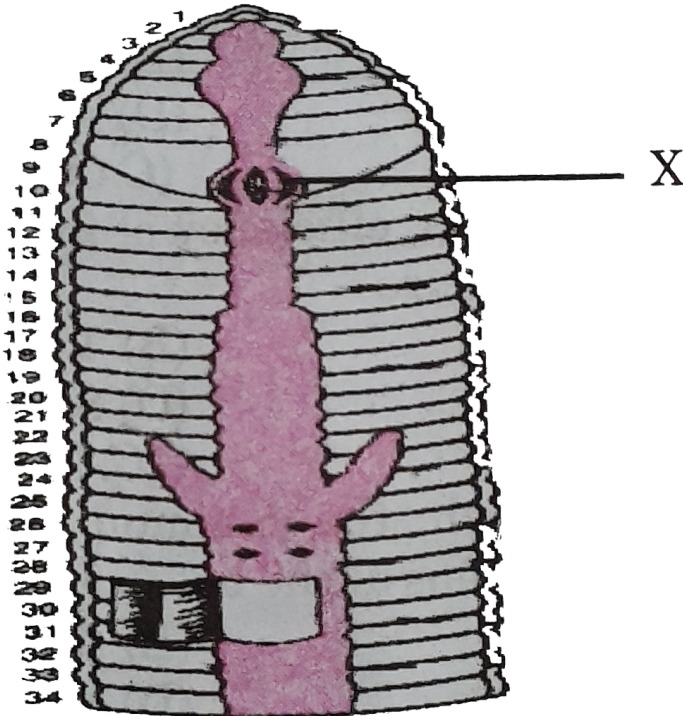
- A. Sinus venosus receives blood through major veins called vena cava
- B. The ventricle opens into a sac like conus arteriosus
- C. The erythrocytes are nucleated

D. Special venous connection between liver and intestine called renal portal system is present

Answer: C

 [Watch Video Solution](#)

427. Identify the part 'X' in the figure of digestive system of Earthworm



A. Intestinal caecae

B. Typhlosole

C. Gizzard

D. Pharynx

Answer: C



Watch Video Solution

428. The body cells in cockroach discharge their nitrogenous waste in the haemolymph mainly in the form of

A. Ammonia

B. Potassium urate

C. Urea

D. Calcium carbonate

Answer: B

 [Watch Video Solution](#)

429. Total number of spiracles present in the thoracic region of cockroach is

A. 10

B. 2

C. 8

D. 6

Answer: B

 [Watch Video Solution](#)

430. _____ in the earthworm perform the function similar to flame cells in Taenia.

A. Germmules of sponges

- B. Flame cells of liverfluke
- C. Chelicerae of spiders
- D. Tube feet of echinoderms

Answer: B



[Watch Video Solution](#)

431. Type of respiration in Cockroach is

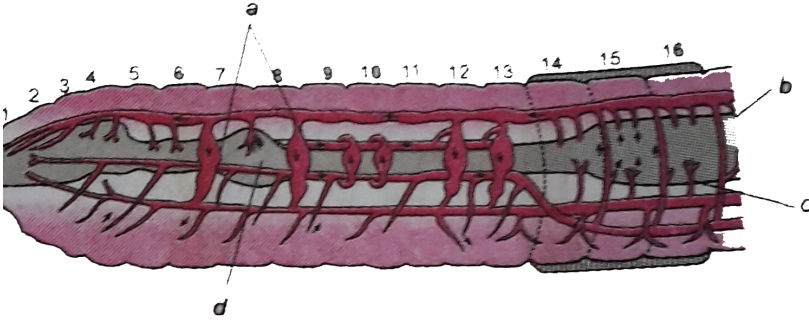
- A. Cutaneous
- B. Tracheal
- C. Pulmonary
- D. Brancheal

Answer: B



[Watch Video Solution](#)

432. In the circulatory system of Pheretima a, b, c, and d represent



A. a - lateral hearts, b - Sub-neural vessel, c - commissural vessel, d - lateral oesophageal vessel

B. a - lateral hearts, b - lateral oesophageal vessel, c- subneural vessel, d - commissural vessel

C. a - lateral hearts, b - commissural vessel, c- subneural vessel, d- oesophageal vessel

D. a- commissural vessels, b-lateral hearts, c - lateral oesophageal vessel, d- subneural vessel

Answer: C



Watch Video Solution

433. The structure in earthworm which serves as a wedge to force open cracks in the soil is

- A. Peristomium
- B. Setae
- C. Clitellum
- D. Prostomium

Answer: D



Watch Video Solution

434. Which among these is not involved in excretion in cockroaches

- A. Malpighain tubules
- B. Nephrocytes
- C. Urecose glands

D. Maxillary plaps

Answer: D



Watch Video Solution

435. Frogs

- A. Are uricotelic
- B. Have olfactory lobes in midbrain
- C. Do not have renal portal system
- D. Have lymphatic system

Answer: D



Watch Video Solution

436. Match the following with respect to eye of insect

- | | |
|----------------------|---|
| (a) Apposition image | (i) secretes crystalline cone |
| (b) Dioptical region | (ii) Refractive region of an ommatidium |
| (c) Retinulae | (iii) Region having cornea and crystalline cone |
| (d) Vitrella | (iv) Houseflies |
| (e) Cornea | (v) Photoreceptor cells |

A. (a)-(v), (b)-(iv), (c)-(iii), (d)-(i),(e)-(ii)

B. (a)-(iv), (b)-(iii), (c)-(v), (d)-(i),(e)-(ii)

C. (a)-(iii), (b)-(ii), (c)-(iv), (d)-(v),(e)-(i)

D. (a)-(iv), (b)-(v), (c)-(iii), (d)-(ii),(e)-(i)

Answer: D



Watch Video Solution

437. Statement (S). : Cockroach is "paurometabolus" with reference to its development

Reason (R). : In the development of cockroach, there is no nymphal stage

- A. Both S and R are correct but R is not correct explanation to S
- B. Both S and R are correct and R is the correct explanation to S
- C. S is wrong but R is correct
- D. S is correct but R is wrong

Answer: D

 [Watch Video Solution](#)

438. Which of the following statements is incorrect pertaining to cockroach

- A. Ostia have valves which allow blood to pass only into heart
- B. Thoracic and abdominal spiracles are valvular
- C. Wall of trachea is made with lamina propria, endothelium and taenidia

D. The taenidia keep the trachea always open and prevent it from collapsing

Answer: C

 [Watch Video Solution](#)

439. Which among the following are fat secreting cells present in the haemocoel of cockroach

A. Trophocytes

B. Urate cells

C. Mycetocytes

D. Oenocytes

Answer: D

 [Watch Video Solution](#)

440. The first body segment of earthworm is

- A. Prostomium
- B. Peristomium
- C. Peristome
- D. Protome

Answer: B



Watch Video Solution

441. Given below are assertion and reason. Point out if

Assertion : The nymph of Cockroach undergoes moulting several times

Reason : There is gradual metamorphosis in Cockroach

- A. Both are true with reason being correct explanation
- B. Both true but reason is not correct explanation
- C. Assertion true but reason is wrong

D. Both are wrong

Answer: B



[Watch Video Solution](#)

442. Given below are assertion and reason. Point out if

Assertion : Blood of Cockroach is colourless with no respiratory pigment.

Reason : Respiration in Cockroach occurs through diffusion in haemolymph

- A. Both are true with reason being correct explanation
- B. Both true but reason is not correct explanation
- C. Assertion true but reason is wrong
- D. Both are wrong

Answer: C



[Watch Video Solution](#)

443. Sinus venosus of Frog is formed by the union of

- A. Two precavals and two post cavals
- B. One precaval and two post cavals
- C. One precaval and one post caval
- D. Two precavals and one post caval

Answer: D



Watch Video Solution

444. The tongue of Frog is

- A. Short protrusible and attached at distal end
- B. Short protrusible and attached at front end
- C. Long nonprotrusible attached at front end
- D. Long protrusible attached at front end

Answer: D



[Watch Video Solution](#)

445. In male cockroach, sperms are stored in

- A. Vas deferens
- B. Seminal vesicles
- C. Mushroom glands
- D. Testes

Answer: B



[Watch Video Solution](#)

446. *Periplaneta americana* differs from *Blatta orientalis* in having

- A. No wings

- B. Developed wings
- C. Only first pair of wings
- D. Only second pair of wings

Answer: B



[Watch Video Solution](#)

447. If a live earthworm is pricked with a needle on its outer surface without damaging its gut, the fluid that comes out is

- A. Excretory fluid
- B. Mucus
- C. Haemolymph
- D. Coelomic fluid

Answer: D



[Watch Video Solution](#)

448. Which of the following features is not present in *Periplanets americana*?

- A. Metamerically segmented body
- B. Schizocoelom as body cavity
- C. Indeterminate and radial cleavage during embryonic development
- D. Exoskeleton composed of N-acetylglucosamine

Answer: C



Watch Video Solution

449. In Earthworm, gizzard occurs in segment

- (a) 5
- (b) 6
- (c) 8
- (d) 10

A. 8th - 9th

B. 10th - 12th

C. 4th - 5th

D. 15th - 16th

Answer: A



Watch Video Solution

450. Arolium in cockroach helps in

A. Digestion

B. Respiration

C. Locomotion

D. Reproduction

Answer: C



Watch Video Solution

451. In the female cockroach, the anterior wall, roof and floor of genital pouch are formed respectively by the following abdominal sterna of

- A. 7th, 8th and 9th segments
- B. 8th, 7th and 9th segments
- C. 9th, 8th and 7th segments
- D. 8th, 9th and 7th segments

Answer: D



[Watch Video Solution](#)

452. Identify the correct statements with reference to nervous system of Periplaneta

- (i) Brain is mainly sensory and an endocrine gland
- (ii) All thoracic ganglia supply nerves to the parts of their respective segments only

(iii) Sixth abdominal ganglion is the largest of all abdominal ganglia

(iv) Frontal ganglion is connected to ingluvial ganglion by a recurrent nerve

A. ii and iv

B. ii and iii

C. *i* and ii

D. *i* and iv

Answer: C



Watch Video Solution

453. Match with reference to corpora adiposa of Periplaneta and find the correct option

I

(a) Trophocytes

(b) Mycetocytes

(c) Oenocytes

(d) Urate cells

II

Contain symbiotic bacteria

Store food

Store uric acid

Synthesise and store lipids

A. a-i, b-ii, c-iii, d-iv

B. a-ii, b-iii, c-iv, d-i

C. a-ii, b-i, c-iii, d-iv

D. a-ii, b-i, c-iv, d-iii

Answer: D



Watch Video Solution

454. Statement (S) : Respiratory system of Periplaneta is "polyneustic" type

Reason (R) : In Periplaneta thoracic spiracles help in inspiration

A. S is correct but R is wrong

B. S is wrong but R is correct

C. Both S and R are correct and R is correct explanation of S

D. Both S and R are correct and R is not correct explanation of S

Answer: A



Watch Video Solution

455. Role of calciferous glands in stomach of earthworm is to

- A. Neutralise the humic acid in the humus
- B. Produce HCl
- C. Emulsify fats
- D. Increase absorptive area

Answer: A



Watch Video Solution

456. Through mosaic vision, a Cockroach can receive

- A. Several images of an object with more sensitivity but less resolution

B. Only one image of an object with more sensitivity but less resolution

C. Several images of an object with less sensitivity but more resolution

D. Only one image of an object with less sensitivity but more resolution

Answer: A



Watch Video Solution

457. Choose the correct option about morphology of cockroach

I

II

- | | |
|-------------------|---------------------|
| (i) Tergites | (a) Fore wings |
| (ii) Tegmina | (b) Upper lip |
| (iii) Hypopharynx | (c) Dorsal sclerite |
| (iv) Labium | (d) Tongue |
| (v) Labrum | (e) Lower lip |

A. *i*-d, *ii*-e, *iii*-c, *iv*-b, *v*-a

B. *i*-b, *ii*-c, *iii*-e, *iv*-d, *v*-b

C. i-c, ii-a, iii-d, iv-e, v-b

D. i-c, ii-b, iii-e, iv-a, v-d

Answer: C



Watch Video Solution

458. Mesorchium in frog is an/a

A. Opening of conus arteriosus

B. Peritoneal fold which adheres to the upper part of kidneys

C. Part of hind brain

D. Tissue by which ovaries are attached to the peritoneal cavity

Answer: B



Watch Video Solution

459. Select the correct route for the passage of sperms in male frogs

A.

Testis → Bidder's canal → Kidney → Vasa efferentia → Urinogenit

B.

Testis → Vasa efferentia → Kidney → Seminal vesicle → Urinogenit

C. Testis → Vasa efferentia → Bidder's canal → Ureter → Cloaca

D.

Testis → Vasa efferentia → Kidney → Bidder's canal → Urinogenit

Answer: D



[Watch Video Solution](#)

Check Your Grasp

1. Harderian glands are also called

- A. Lacrimal glands
- B. Accessory lacrimal glands
- C. Meibomian glands
- D. Ceruminous glands

Answer: b

 [Watch Video Solution](#)

2. Part of urinogenital system that takes part in storing sperms in male Frog is called

- A. Spermatheca
- B. Spermatophore
- C. Seminal vesicle
- D. Bidder's canal

Answer: c

 [Watch Video Solution](#)

3. Part of female reproductive system of Frog which stores ova temporarily is

- A. Uterus
- B. Ovary
- C. Fallopian tube
- D. Ovisac

Answer: d

 [Watch Video Solution](#)

4. Part of peritoneum that suspends testes is called

- A. Mesentary
- B. Mesorchium

C. Mesovarium

D. Renal peritoneum

Answer: b



Watch Video Solution

5. Which hormone is required for metamorphosis in frogs?

A. Ecdysone

B. Thyroxine

C. Juvenile hormone

D. Melatonin

Answer: b



Watch Video Solution

6. Vein not belonging to digestive tract which becomes component part of hepatic portal system of Frog is

- A. Dorso-lumbar
- B. Vesicular
- C. Gonadial
- D. Anterior abdominal

Answer: d



[Watch Video Solution](#)

7. Adjacent ommatidia do not interfere in the images due to presence of

- A. Pigmented cells
- B. Retinulae
- C. Vitrillae
- D. Coneagen cells

Answer: a



Watch Video Solution

8. Chordotonal organs are connected with sense of

- A. Humidity
- B. Sound
- C. Temperature
- D. Smell

Answer: b



Watch Video Solution

9. Endocrine glands of insects which secrete juvenile hormone are

- A. Corpora allata

B. Corpora cardiaca

C. Prothoracic glands

D. Intercerebral glands

Answer: a



Watch Video Solution

10. Sugar present in blood plasma of Cockroach is

A. Sucrose

B. Glucose

C. Trehalose

D. Lactose

Answer: c



Watch Video Solution

11. Number of crushing teeth present in the gizzard of Cockroach is

- A. Two
- B. Three
- C. Four
- D. Six

Answer: d



Watch Video Solution

12. Characteristic odour of Cockroach is produced by

- A. Dermal glands
- B. Stink glands
- C. Trichogen cells
- D. Both A and B

Answer: d



Watch Video Solution

13. Nephridia of Pheretima are

- A. Meganephridia
- B. Micronephridia
- C. Metanephridia
- D. Both B and C

Answer: d



Watch Video Solution

14. Chromophil cells of pharyngeal mass are

- A. Excretory cells

B. Glandular cells

C. Storage cells

D. Digestive cells

Answer: b



Watch Video Solution

15. Buccal segment of Pheretima is

A. First segment

B. Second segment

C. Third segment

D. Both B and C

Answer: a



Watch Video Solution

