



BIOLOGY

BOOKS - DINESH PUBLICATION ENGLISH

CHEMICAL COORDINATION AND REGULATION

Mcq

1. Hormones are produced by

- A. Exocrine glands
- B. Endocrine glands
- C. Holocrine glands

D. Apoerine glands.

Answer: B

 [Watch Video Solution](#)

2. An organ where a hormone shows its effect is called

A. Effector

B. Target

C. Initiator

D. Terminator.

Answer: B

 [Watch Video Solution](#)

3. A heterocrine gland is one which

A. Has two distinct parts

B. Serves a double function of exocrine and endocrine gland

C. Produces two types of hormones.

D. Occurs in two places.

Answer: B



Watch Video Solution

4. The primary target of the hormones of hypothalamus is

A. Pineal gland

B. Thymus

C. Pituitary

D. Testis.

Answer: C



Watch Video Solution

5. The releasing hormones are produced by

A. Testis

B. Pancreas

C. Pituitary

D. Hypothalamus.

Answer: D

 [Watch Video Solution](#)

6. The organ which was considered vestigial till recently but now confirmed to be endocrine gland is

- A. Thymus
- B. Pancreas
- C. Pineal
- D. Pituitary.

Answer: C

 [Watch Video Solution](#)

7. The disease mellitus is the result of

- A. Undersecretion of insulin
- B. Undersecretion of thyroxine
- C. Undersecretion of oestrogen
- D. None of the above

Answer: A

 [Watch Video Solution](#)

8. Deficiency of iodine in food or water leads to

- A. Colour blindness
- B. Simple goitre
- C. Ophthalmic goitre
- D. None of these.

Answer: B



Watch Video Solution

9. Islets of Langerhans are present in

- A. Brain
- B. Stomach
- C. Ovary

D. Pancreas.

Answer: D

 [Watch Video Solution](#)

10. The hormone insulin is secreted by

A. Hypothalamus

B. Thymus

C. β -cells of islet of Langerhans

D. Pituitary.

Answer: C

 [Watch Video Solution](#)

11. Which of the following statement is false about diabetes ?

- A. It is the result of deficiency of insulin
- B. Blood has excess of glucose
- C. Cells fail to pick up glucose from blood
- D. More sugar is burnt in the body of a diabetic than of a normal person.

Answer: D



Watch Video Solution

12. The male sex hormone is called

- A. Vasopressin
- B. Gonadotropic hormone
- C. FSH
- D. Testosterone

Answer: D



Watch Video Solution

13. Which hormone produces calorogenic effect in the body

?

- A. Adrenaline

B. FSH

C. Growth hormone

D. Thyroxine.

Answer: D



Watch Video Solution

14. The hormone which reduces the sodium loss through urine and sweat is

A. Calcitonin

B. Aldosterone

C. Parathormone

D. Vasopressin

Answer: B



Watch Video Solution

15. In males , the essential hormone for secondary sexual characteristics is

Or

The hormone which brings about characteristics changes in the male at puberty is called

A. Testosterone

B. Androgen

C. Follicle stimulating hormone

D. None of these.

Answer: A

 [Watch Video Solution](#)

16. Dwarfism is a hormonal disorder due to

- A. Deficiency of thyroxine secreted by the thyroid
- B. Excess of thyroxine
- C. Deficiency of STH produced by the pituitary
- D. Deficiency of thyroxine and GH.

Answer: C

 [Watch Video Solution](#)

17. Epinephrine is secreted by

- A. Adrenal medulla and decreases heart beat
- B. Adrenal medulla and increases heart beat
- C. Pancreas and increases heart beat.
- D. Pancreas and decreases heart beat.

Answer: B



Watch Video Solution

18. Function of ACTH is to

- A. Stimulate pituitary

- B. Stimulate the adrenal cortex to produce hormones
- C. Suppress the activity of adrenal cortex
- D. Stimulate thyroid.

Answer: B

 [Watch Video Solution](#)

19. If a person happens to take large amount of water, the amount of ADH in blood will

- A. Increases
- B. Decrease
- C. First increase then decrease

D. Will remain unchanged.

Answer: B

 [Watch Video Solution](#)

20. The excessive amount of calcium is regulated by

A. Thyroxine

B. Calcitonin

C. Epinephrine

D. Progesterone.

Answer: B

 [Watch Video Solution](#)

21. Which hormone is required for metamorphosis in frogs?

A. Adrenaline

B. Insulin

C. Thyroxine

D. Cortisol.

Answer: C



Watch Video Solution

22. Deficiency in the activity of adrenal cortex leads to

A. Cushing disease

- B. Conn's syndrome
- C. Addison's disease
- D. Simmond's disease.

Answer: C

 [Watch Video Solution](#)

23. The hormone that stimulates the stomach to secrete gastric juice is

- A. Enterogastrone
- B. Gastrin
- C. Pancreozymin

D. Cholecystokinin.

Answer: B

 [Watch Video Solution](#)

24. Secretion of gastric juice is stopped by

A. Gastrin

B. Secretin

C. Enterogastrone

D. Cholecystokinin.

Answer: C

 [Watch Video Solution](#)

25. Testosterone is secreted by

- A. Leydig cells
- B. Sertoli cells
- C. Spermatogonia
- D. Both A and B.

Answer: A



Watch Video Solution

26. The hormone which darkens the skin of frog is

- A. Insulin

B. Oestrogen

C. Melanocyte stimulating hormone

D. None of these.

Answer: C

 [Watch Video Solution](#)

27. While dwarfs and cretins are somewhat of the same height, the main difference is that

A. Dwarfs have normal intelligence while cretins do not

B. Cretins are mentally deranged

C. The head of cretin is especially large

D. The dwarf have elongated chin.

Answer: B

 [Watch Video Solution](#)

28. Pars nervosa is a part of

A. Brain

B. Spinal cord.

C. Pituitary gland

D. Pineal gland.

Answer: C

 [Watch Video Solution](#)

29. Relaxin is secreted by

A. Corpus luteum

B. Pituitary

C. Pineal

D. Ovary

Answer: A



Watch Video Solution

30. Intergration system in the body is

A. Nervous system

B. Endocrine system

C. Circulatory system

D. Nervous and Endocrine system.

Answer: D



Watch Video Solution

31. Blood pressure is controlled by

A. Adrenal

B. Thyroid

C. Thymus

D. Corpus luteum.

Answer: A

 [Watch Video Solution](#)

32. Correct hormonal sequence in the case of menstruation as

- A. Estrogen, FSH, Progesterone
- B. Estrogen, Progesterone, FSH
- C. FSH, Progesterone, Estrogen
- D. FSH, Estrogen, Progesterone.

Answer: D

 [Watch Video Solution](#)

33. Serotonin and Melatonin are hormones, secreted by

A. Thymus

B. Pineal

C. Thyroid

D. Adrenal.

Answer: B



Watch Video Solution

34. Which one is related to the production of lymphocytes and antibodies ?

A. Thymus

B. Thyroid

C. Adrenal

D. Pituitary.

Answer: A



Watch Video Solution

35. A patient who excretes large quantity of sodium in urine has

A. Diseased adrenal medulla

B. Diseased adrenal cortex

C. Diseased pancreas

D. Diseased thymus.

Answer: B

 [Watch Video Solution](#)

36. Chorionic gonadotropic hormone is secreted by

A. Ovary

B. Pituitary

C. Uterus

D. Placenta.

Answer: D

 [Watch Video Solution](#)

37. Which ovarian hormone is proteinaceous ?

A. Estradiol

B. Progesterone

C. Relaxin

D. Human chorionic gonadotropin.

Answer: C



Watch Video Solution

38. Human male sex hormone or androgen present in urine of males is

A. Testosterone

B. Andostenedione

C. Dehydroepiandrosterone

D. Androsterone.

Answer: D

 [Watch Video Solution](#)

39. Besides testes, androgens are also produced by

A. Thyroid

B. Thymus

C. Adrenal medulla

D. Adrenal cortex

Answer: D

 [Watch Video Solution](#)

40. STH (somatotrophic hormone) is also known as

A. TSH

B. LTH

C. ADH

D. GH.

Answer: D

 [Watch Video Solution](#)

41. What is the other name of vasopressin ?

A. ADH

B. ACTH

C. LH

D. FSH.

Answer: A



Watch Video Solution

42. Hormones may be

A. Steroids

B. Peptides

C. Amino acid derivatives

D. All the above.

Answer: D



Watch Video Solution

43. Treatment with alloxan destroys

A. STH cells

B. Setoli cells

C. Leydig's cells

D. β -cells of islets of Langerhans.

Answer: D



Watch Video Solution

44. Which of the following glands grows to the maximum size at puberty and then diminishes gradually

- A. Thymus
- B. Pituitary
- C. Thyroid
- D. Adrenal.

Answer: A



Watch Video Solution

45. Complete failure of adenohypophysis of pituitary causes

- A. Addison's disease
- B. Acromegaly
- C. Cushing's disease
- D. Simmond's disease.

Answer: D



Watch Video Solution

46. The contraction of gall bladder is due to

- A. Oxytocin

B. Gastrin

C. Cholecystokinin

D. Secretin.

Answer: C



Watch Video Solution

47. Which of the following does not act as an endocrine gland as well as an exocrine gland?

A. Adrenal

B. Pituitary

C. Pancreas

D. Liver.

Answer: C

 [Watch Video Solution](#)

48. The hormone that controls the level of calcium and phosphorus in the blood is secreted by

A. Thymus

B. Thyroid

C. Parathyroid

D. Adrenal.

Answer: C

 [Watch Video Solution](#)

49. Secretin is produced by

- A. Pancreas and influences the conversion of glycogen to glucose
- B. Adrenal gland and accelerates heart beat
- C. Testis and produces male secondary sex characters
- D. Small intestine and stimulates pancreas.

Answer: D

 [Watch Video Solution](#)

50. The gonadotropic hormones are secreted by

- A. Posterior part of thyroid
- B. Adrenal cortex
- C. Adenohypophysis of pituitary
- D. Interstitial cells of testis.

Answer: C



Watch Video Solution

51. Spermatogenesis in mammals is controlled by

- A. F.S.H. (Follicle stimulating hormone)
- B. L.H.

C. F.S.H. and prolactin

D. Growth hormone and prolactin.

Answer: A



Watch Video Solution

52. Testosterone is secreted by

A. Tunica albuginea

B. Sertoli cells

C. Leydig/interstitial cells

D. Primary spermatocytes.

Answer: C



[Watch Video Solution](#)

53. Adrenal gland is associated with

- A. Pharynx
- B. Pancreas
- C. Kidney
- D. Brain.

Answer: C



[Watch Video Solution](#)

54. According to one of the theories of aging, the decline and disappearance of which gland by late middle age is the primary cause of aging ?

A. Thyroid

B. Parathyroid

C. Thymus

D. Posterior lobe of pituitary.

Answer: C



Watch Video Solution

55. Mammalian thymus' is mainly concerned with

- A. Regulation of body temperature
- B. Regulation of body growth
- C. Immunological functions
- D. Secretion of thyrotropin.

Answer: C



Watch Video Solution

56. An important function of progesterone is

- A. To prepare uterus for pregnancy
- B. Implantation of embryo

C. Maintenance of pregnancy

D. To stimulate ADH

A. An enzyme for digesting proteins

B. Hormone to initiate uterine contraction

C. Amino acid which may be cause of alkaptonuria

D. Hormone concerned with retention and growth of pregnancy.

Answer: D



Watch Video Solution

57. The hormone which brings about characteristic changes in male at puberty is called

A. Estrogen

B. Testosterone

C. GH

D. FSH.

Answer: B

 [Watch Video Solution](#)

58. Continued secretion of milk is maintained by

Or

Which of the following is a lactogenic hormone

A. Prolactin

B. LH

C. Relaxin

D. STH

Answer: A



Watch Video Solution

59. Endocrine glands are those glands which pour their secretion directly into

A. Ducts

B. Substrate

C. Blood

D. All the above.

Answer: C



Watch Video Solution

60. Hormone excreted in females in urine after menopause is

A. STH

B. LH

C. FSH

D. LTH

Answer: C



Watch Video Solution

61. Term 'hormone' was coined by

A. E.H. Starling

B. G.W. Harris

C. E.H. Schally

D. W.M. Bayliss.

Answer: A



Watch Video Solution

62. Occurrence of Leydig's cells and their secretion is

A. Ovary and estrogen

B. Liver and chloesterol

C. Pancreas and glucagon

D. Testis and testosterone.

Answer: D



Watch Video Solution

63. Ovarian hormones are usually

A. Proteinaceous

B. Steroids

C. Amines

D. Modified amino acids.

Answer: B



[Watch Video Solution](#)

64. LH in males stimulates Leydig cells to produce

A. Aldosterone

B. Estrogen

C. Progesterone

D. Testosterone.

Answer: D



[Watch Video Solution](#)

65. The major function of corpus luteum is

A. Excretory

B. Digestive

C. Nervous

D. Endocrine.

Answer: D



Watch Video Solution

66. The hormone which brings about characteristic changes in male at puberty is called

A. Estradiol

B. Androsterone

C. Testosterone

D. Adrenaline.

Answer: C



Watch Video Solution

67. A woman started developing male characteristics. It may be due to

A. Overproduction of adrenal androgens

B. Overproduction of estrogen

C. Damage to mammary estrogen

D. Damage to posterior pituitary.

Answer: A

 [Watch Video Solution](#)

68. Progesterone is secreted by

A. Corpus luteum

B. Pituitary

C. Adrenal cortex

D. Pineal.

Answer: A

 [Watch Video Solution](#)

69. Hormone responsible for the development of secondary sexual characters of female is

A. Progesterone

B. Oxytocin

C. Estrogen

D. Androgen.

Answer: C



Watch Video Solution

70. Corpus luteum releases:

A. Luteinising hormone

B. Estrogen

C. Progesterone

D. Both B and C.

Answer: D



Watch Video Solution

71. Which of the following is not a steroid hormone?

A. Aldosterone

B. Androgen

C. Estrogen

D. Thyroxine.

Answer: D



Watch Video Solution

72. Which of the following is called emergency gland of the body?

- A. Thyroid
- B. Thymus
- C. Pituitary
- D. Adrenal.

Answer: D



Watch Video Solution

73. Hormone involved in the discharge of pancreatic juice in mammals is

- A. Gastrin
- B. Cholecystinin
- C. Secretin
- D. Enterogastrone.

Answer: B



Watch Video Solution

74. The islets of Langerhans are found in

- A. Pancreas

B. Pituitary

C. Liver

D. Spleen.

Answer: A



Watch Video Solution

75. Ovulation in humans is controlled by

A. FSH and LTH

B. FSH and TSH

C. LTH and LH

D. FSH and LH

Answer: D



Watch Video Solution

76. The hormone ACTH is secreted by :

- A. Adrenal cortex
- B. Pituitary
- C. Adrenal medulla
- D. Thyroid.

Answer: B



Watch Video Solution

77. Posterior lobe of pituitary/neurohypophysis secretes two hormones

- A. Testosterone and androsterone
- B. Progesterone and estradiol
- C. Vasopressin and oxytocin
- D. Cortisone and cortisterone.

Answer: C

 [Watch Video Solution](#)

78. Which hormone is concerned with the concentration of urine :

- A. Oxytocin

B. Parathormone

C. Androgen

D. Vasopressin

Answer: D



Watch Video Solution

79. Pituitary gland is under the control of

A. Thyroid gland

B. Adrenal gland

C. Adrenal medulla

D. Hypothalamus.

Answer: D



Watch Video Solution

80. ADH or vasopressin is

- A. Enzyme that hydrolyses peptides
- B. Hormone secreted by pituitary that promotes reabsorption of water from glomerular filtrate
- C. Hormone that promotes glycogenolysis
- D. Energy rich compound connected with muscle contraction.

Answer: B





[Watch Video Solution](#)

81. Growth hormone (GH) or STH is secreted by

- A. Adrenal
- B. Anterior lobe of pituitary
- C. Posterior lobe of pituitary
- D. Sex organs.

Answer: B



[Watch Video Solution](#)

82. Gigantism and acromegaly are due to

A. Thyroid

B. Pituitary

C. Thyroid and pituitary

D. Thyroid, pituitary and thymus.

Answer: B



Watch Video Solution

83. The hormone which is not synthesised by the anterior lobe of pituitary is

A. ACTH, TSH and oxytocin

B. STH, GH and ADH

C. TSH, ADH and prolactin

D. FSH, GH and LH.

Answer: D

 [Watch Video Solution](#)

84. Hypophysectomy results in

A. Heart attack

B. Regression of reproductive functions

C. Death

D. Poor digestion.

Answer: B



[Watch Video Solution](#)

85. Diabetes insipidus can be cured by administration of

A. ADH

B. Antithistamine

C. Glucagon

D. Insulin.

Answer: A



[Watch Video Solution](#)

86. A woman whose pituitary gets damaged can have a baby if she is given

A. $20\mu\text{g}$ of estrogen and progesterone each day for 14 days

B. Small quantity of estrogen every day for 28 days after ovulation

C. Small quantity of FSH and LH each day and large dose of LH on fifteenth day

D. Small quantity of FSH and LH each day.

Answer: C



Watch Video Solution

87. Why is oxytocin called a birth hormone?

- A. Prolactin
- B. Progesterone
- C. Adrenaline
- D. Oxytocin.

Answer: D



Watch Video Solution

88. Which one does not match with regard to biological activity ?

- A. Creatinine

B. Renin

C. Gastrin

D. Oxytocin.

Answer: A



Watch Video Solution

89. FSH is secreted by

A. Thyroid gland

B. Anterior pituitary

C. Posterior pituitary

D. Gonad.

Answer: B



Watch Video Solution

90. Reception for protein hormones are located

- (a) in the nucleus
- (b) in the cytoplasm
- (c) on the cell surface
- (d) on the endoplasmic reticulum

- A. Inside nucleus
- B. Inside cytoplasm
- C. On surface of ER
- D. On cell surface.

Answer: D

 [Watch Video Solution](#)

91. Small amount of iodine is added to common salt so that

A. Oedema is prevented

B. Common salt is utilised properly in the body

C. Occurrence of goitre is prevented

D. Kidney remains efficient in maintaining water balance.

Answer: C

 [Watch Video Solution](#)

92. Iodine taken in diet is stored in

- A. Liver cells
- B. Thyroid cells
- C. Muscle cells
- D. Brain cells.

Answer: B

 [Watch Video Solution](#)

93. Hypothyroidism causes in adult

- A. Diabetes mellitus
- B. Diabetes insipidus

C. Myxoedema

D. Exophthalmic goitre.

Answer: C



Watch Video Solution

94. Graves' disease is caused due to

A. Hyposecretion of thyroxine

B. Hypersecretion of thyroxine

C. Hypersecretion of thyrocalcitonin

D. Hyposecretion of thyrocalcitonin.

Answer: B



[Watch Video Solution](#)

95. Undersecretion of thyroxine/hypothyroidism in children causes

- A. Cretinism
- B. Dwarfism
- C. Goitre
- D. Acromegaly.

Answer: A



[Watch Video Solution](#)

96. A tadpole with surgically removed thyroid gland can be made to metamorphose if

- A. Given an injection of TSH
- B. Given an injection of oxytocin
- C. Given an injection of thyroxine
- D. Fed on dried thyroid gland.

Answer: C



Watch Video Solution

97. LH and FSH are collectively called

- A. Emergency hormones

B. Neurohormones

C. Gonadotropin hormones

D. Antistress hormones.

Answer: C



Watch Video Solution

98. Goitre is a pathological condition associated with

A. Thyroxine

B. Testosterone

C. Progesterone

D. Glucagon.

Answer: A

 [Watch Video Solution](#)

99. Addition of a trace of thyroxine or iodine in water containing tadpoles will

- A. Keep them in larval stage
- B. Hasten their metamorphosis
- C. Slow down their metamorphosis
- D. Kill the tadpoles.

Answer: B

 [Watch Video Solution](#)

100. The hormone that controls the level of calcium and phosphorus in the blood is secreted by

- A. Thyroid
- B. Parathyroid
- C. Thymus
- D. Pancreas.

Answer: B



Watch Video Solution

101. Addisons disease is due to under-secretion of

- A. Adrenaline

B. Corticoids/Adrenals

C. ACTH

D. Insulin.

Answer: B



Watch Video Solution

102. Addison's disease is due to

A. Adrenals

B. Thyroid

C. Parathyroids

D. Pituitary.

Answer: A



Watch Video Solution

103. Epinephrine is secreted from

- A. Adrenal cortex
- B. Adrenal medulla
- C. Pancreas
- D. Nerve endings.

Answer: B



Watch Video Solution

104. Adrenaline increases

- A. Blood pressure
- B. Heart beat
- C. Both A and B
- D. Arteriosclerosis.

Answer: C

 [Watch Video Solution](#)

105. Blood pressure is controlled by

- A. Thymus
- B. Adrenal

C. Thyroid

D. Corpus luteum.

Answer: B



Watch Video Solution

106. Insulin is a/an

A. Vitamin

B. Lipid

C. Hormone

D. Enzyme.

Answer: C



[Watch Video Solution](#)

107. Secretin stimulates secretion of

- A. Liver
- B. Gall bladder
- C. Pancreas
- D. Stomach.

Answer: C



[Watch Video Solution](#)

108. Which hormone controls water and mineral metabolism ?

- A. Insulin
- B. Progesterone
- C. Glucagon
- D. Deoxycorticosterone.

Answer: D



Watch Video Solution

109. Parathormone induces

- A. Increased level of serum calcium

- B. Increased level of blood sugar
- C. Decreased level of serum calcium
- D. Decreased level of blood sugar.

Answer: A

 [Watch Video Solution](#)

110. Cushing's disease is caused by hyperactivity of

- A. GH
- B. Thyroxine
- C. Insulin
- D. Glucocorticoids/Cortisol.

Answer: D



Watch Video Solution

111. Failure or reduced insulin production causes

- A. Diabetes mellitus
- B. Diabetes insipidus
- C. Addison's disease
- D. Cushing's disease

Answer: A



Watch Video Solution

112. Hypothalamus controls the production of pituitary hormones

A. ACTH (corticotropin), GH (growth hormone) and ADH (vasopressin)

B. FSH and progesterone

C. TSH (thyrotropin) and cortisol

D. LH (luteinising hormone), ACTH (corticotropin) and TSH (thyrotropin).

Answer: D



Watch Video Solution

113. Appearance of facial hairs in a woman may be due to the effect of

A. UV radiation

B. Temperature

C. Hormones

D. Pollution.

Answer: C



Watch Video Solution

114. Reabsorption of water from distal parts of the tubules is facilitated by hormone _____.

A. Vassopressin/ADH

B. Oxytocin

C. Calcitonin

D. Relaxin.

Answer: A



Watch Video Solution

115. Pineal gland produces

A. Glucagon

B. Aldosterone

C. Cortisone

D. Melatonin.

Answer: D

 [Watch Video Solution](#)

116. Diabetes insipidus is caused by the deficiency of hormone

A. Insulin

B. Vasopressin

C. Oxytocin

D. Thymosin

Answer: B

 [Watch Video Solution](#)

117. Endocrine gland for combating emergency is

- A. Adrenal cortex
- B. Adrenal medulla
- C. Pancreas
- D. Parathyroid

Answer: B

 [Watch Video Solution](#)

118. Gluconeogenesis is controlled by

A. Corticosterone

B. Thyroxine

C. Cortisol

D. All the above.

Answer: D



Watch Video Solution

119. Effect of thyroxine on B.M.R is

A. Increase

B. Decrease

C. Uncertain

D. No effect.

Answer: A

 [Watch Video Solution](#)

120. Glucagon is produced by

A. Peptic cells

B. Oxyntic cells

C. Alpha cells

D. Beta cells.

Answer: C

 [Watch Video Solution](#)

121. Which of the following is a female sex hormone?

A. Estrogen

B. Androgen

C. Insulin

D. Adrenaline.

Answer: A



Watch Video Solution

122. Release of pancreatic juice is stimulated by

A. Secretin

B. Cholecystokinin/Pancreozymin

C. Duocrinin

D. Enterogastone.

Answer: B



Watch Video Solution

123. During pregnancy , the urine of female would contain

A. Progesterone

B. FSH

C. Luteinising hormone

D. Chorionic gonadotropin.

Answer: D



Watch Video Solution

124. Adrenal cortex produces

- A. Adrenaline
- B. Epinephrine
- C. Aldosterone
- D. Calcitonin.

Answer: C



Watch Video Solution

125. Parathyroid gland degenerates. Which activity is disturbed?

- A. Growth
- B. Calcium concentration
- C. Potassium concentration
- D. Sodium concentration.

Answer: B

 [Watch Video Solution](#)

126. Secretion of gastric juice is stopped by

- A. Enterogastrone

B. Gastrin

C. Pancreozymin

D. Cholecystokinin.

Answer: A



Watch Video Solution

127. Testosterone is secreted by

A. Sertoli cells

B. Leyding cells

C. Oxyntic cells

D. Pituitary gland.

Answer: B



Watch Video Solution

128. Hormone secreted during child birth is

- A. Thyroxine
- B. Relaxin
- C. Progesterone
- D. Glucocorticoid.

Answer: B



Watch Video Solution

129. Effect of prolactin hormone is on

- A. Liver
- B. Pancreas
- C. Mammary glands
- D. Bones.

Answer: C



Watch Video Solution

130. Dwarfism results due to

- A. Absence of insulin
- B. Hyposecretion of GH during childhood

C. Hyposecretion of GH during adult stage.

D. Excessive secretion of adrenaline.

Answer: B



Watch Video Solution

131. Ovulation is stimulated by

A. LH

B. FSH

C. Estrogen

D. Progesterone.

Answer: A



Watch Video Solution

132. Hormone having stimulatory effect on heart is

A. Thyroxine

B. Gastrin

C. Glucagon

D. Adrenaline.

Answer: D



Watch Video Solution

133. Glucagon produced by α -cells of islets of Langerhans

- A. Converts glucose to glycogen
- B. Converts glycogen to glucose
- C. Decreases concentration of glucose in blood
- D. None of these.

Answer: B

 [Watch Video Solution](#)

134. Diabetes mellitus means

- A. Increase of sugar in blood
- B. Increase of sugar in urine
- C. Decrease of sugar in blood

D. Both A and B.

Answer: D



Watch Video Solution

135. Blood calcium is increased by administration of

A. Glucagon

B. Thyroxine

C. Parathormone

D. Calcitonin.

Answer: C



Watch Video Solution

136. MSH is secreted by

- A. Anterior lobe
- B. Median lobe
- C. Posterior lobe
- D. Not any particular lobe.

Answer: B



[Watch Video Solution](#)

137. In hormone action, if receptor molecules are removed from target organs, the target organ will

A. Continue to respond to hormone

B. Not respond to hormone

C. Continue to respond but requires higher concentration

D. Continue to respond but in the opposite way

Answer: B

 [Watch Video Solution](#)

138. Which one of the following endocrine glands stores its secretion in the extracellular space before discharging in into the blood?

A. Testes

B. Pancreas

C. Thyroid

D. Adrenal.

Answer: C



Watch Video Solution

139. Ca^{2+} level in body is controlled by

A. Thyroid

B. Hypothalamus

C. Pituitary

D. Thyroid and parathyroids

Answer: D



Watch Video Solution

140. Which of the following is not secreted by pituitary gland

A. Thyroxine

B. F.S.H.

C. G.H.

D. A.C.T.H.

Answer: A



Watch Video Solution

141. Iodine is present in the secretion of

- A. Adrenal
- B. Thyroid/thyroxine
- C. Pancreas
- D. Pituitary.

Answer: B

 [Watch Video Solution](#)

142. Which is correct ?

- A. Glucagon and insulin are secreted by same cells
- B. Glucagon and insulin are secreted by different cells

- C. Glucagon and insulin are secreted by different cells
and have opposite effect
- D. None of the above

Answer: C

 [Watch Video Solution](#)

143. A temporary endocrine gland in humans is

- A. Corpus uteri
- B. Corpus albicans
- C. Corpus callosum
- D. Corpus luteum.

Answer: D

 [Watch Video Solution](#)

144. Pineal gland is located on the

- A. Dorsal part of diencephalon
- B. Ventral part of diencephalon
- C. Ventral side of cerebellum
- D. Lateral side of cerebrum.

Answer: A

 [Watch Video Solution](#)

145. Cholecystokinin and duocrinin are secreted by

- A. Stomach
- B. Liver
- C. Duodenum
- D. Ileum.

Answer: C



Watch Video Solution

146. Grown up individual may lack sexual traits due to

- A. Castration
- B. Decreased secretion of sex hormones

C. Excess secretion of sex hormones

D. Glandular disease.

Answer: B

 [Watch Video Solution](#)

147. Which one opposes parathormone ?

A. ADH

B. Insulin

C. Thyroxine

D. Thyrocalcitonin.

Answer: D



[Watch Video Solution](#)

148. Which is true of thyrocalcitonin ?

- A. Produced by parathyroid, decreases Ca in ECF
- B. Produced by thyroid, decreases Ca in ECF
- C. Produced by parathyroid, increases Ca in ECF
- D. Produced by thyroid, increase Ca in ECF.

Answer: B



[Watch Video Solution](#)

149. Hormones differ from enzymes in that they are

- A. Found in plants only
- B. Found in animals only
- C. Used up in metabolism
- D. Not used in metabolism.

Answer: C

 [Watch Video Solution](#)

150. Somatostatin (GHIH) is secreted by

- A. Pituitary
- B. Thyroid
- C. Pineal

D. Hypthalamus.

Answer: D



Watch Video Solution

151. The hormone insulin is secreted by

A. α -cells of pancreas

B. β -cells of pancreas

C. Spleen

D. Mucosa of oesophagus.

Answer: B



Watch Video Solution

152. Diabetes insipidus is due to

- A. Hypersecretion of pituitary hormone
- B. Excess of insulin
- C. Deficiency of insulin.
- D.

Answer: A



Watch Video Solution

153. Abnormal secretion of thyroxine produces

- A. Acromegaly

B. Addison's disease

C. Cretinism

D. Goitre.

Answer: D



Watch Video Solution

154. Undersecretion of cortisol (corticoids) produces a disease known as

A. Addison's disease

B. Haemophilia

C. Anaemia

D. Mental retardation.

Answer: A

 [Watch Video Solution](#)

155. Which hormone controls growth, mental functions and tissue differentiation ?

A. Glucagon

B. Parathormone

C. Thyroxine

D. Cortisone.

Answer: C

 [Watch Video Solution](#)

156. Release of milk from mother's breast is mediated through

- A. Prolactin
- B. Relaxin
- C. Oxytocin
- D. Progesterone.

Answer: C

 [Watch Video Solution](#)

157. Renin is produced by

A. Liver

B. Spleen

C. Juxtaglomerular cells

D. Stomach.

Answer: C



Watch Video Solution

158. Androgen is

A. Gas

B. Hormone

C. Male flower

D. Male hormone.

Answer: D



Watch Video Solution

159. A mineralocorticoid is

A. Testosterone

B. Aldosterone

C. Androgen

D. Progesterone.

Answer: B



Watch Video Solution

160. Action of insulin was first demonstrated by

- A. Banting and Best
- B. Darwin
- C. Lamarck
- D. Watson and Crick.

Answer: A



Watch Video Solution

161. Insulin is a/an

- A. Vitamin

B. Proteinaceous hormone

C. Amine hormone

D. Steroid.

Answer: B



Watch Video Solution

162. Hormones thyroxine, adrenaline and the pigment melanin are formed from

A. Glycine

B. Tryptophan

C. Tyrosine

D. Proline.

Answer: C

 [Watch Video Solution](#)

163. Hormone produced in allergic reaction is

- A. Glucocorticoid
- B. Mineralocorticoid
- C. Norepinephrine
- D. Epinephrine

Answer: A

 [Watch Video Solution](#)

164. FSH is involved in

- A. Ovulation
- B. Spermatogenesis
- C. Control of blood sugar
- D. Growth.

Answer: B



Watch Video Solution

165. Epinephrine is

- A. Adrenergic

B. Cholinergic

C. Both A and B

D. None of the above

Answer: A



Watch Video Solution

166. Acromegaly is due to hypersecretion of a hormone secreted from:

A. Thyroid

B. Thymus

C. Anterior pituitary

D. Posterior pituitary.

Answer: C

 [Watch Video Solution](#)

167. GH controls growth through

A. rRNA

B. tRNA

C. mRNA

D. None of the above

Answer: C

 [Watch Video Solution](#)

168. A gorilla-like appearance with huge hands and legs is due to excess secretion of:

- A. Excess TSH
- B. Excess vitamin C
- C. Excess thyroxine
- D. Excess secretion of GH after maturity.

Answer: D



Watch Video Solution

169. Diabetes insipidus is due to

A. ACTH

B. TSH

C. ADH

D. Aldosterone.

Answer: C



Watch Video Solution

170. Which one controls the secretion of oestrogen

A. h CG

B. Progesterone

C. LH

D. FSH.

Answer: D

 [Watch Video Solution](#)

171. Parathormone deficiency leads to

- A. Goitre
- B. Hypocalcemia
- C. Hypercalcemia
- D. All the above.

Answer: B

 [Watch Video Solution](#)

172. Which hormone facilitates child birth/parturition ?

A. Oxytocin

B. FSH

C. LH

D. Prolactin.

Answer: A



Watch Video Solution

173. The hormone secreted by corpus luteum is

A. Thyroxine

B. Progesterone

C. hCG

D. Estrogen.

Answer: B



Watch Video Solution

174. Basal metabolic rate is controlled by

A. Glucagon

B. Insulin

C. Thyroxine

D. Both A and B.

Answer: C

 [Watch Video Solution](#)

175. The hormones controlling secondary sexual characters include

- A. Thyroxine
- B. FSH and LH
- C. GH and FSH
- D. Testosterone and estrogen.

Answer: D

 [Watch Video Solution](#)

176. Hormones involved in carbohydrate metabolism are

- A. Insulin, glucagon, epinephrine and parathormone
- B. Insulin, glucagon, epinephrine and glucocorticoids
- C. Insulin, glucagon, glucocorticoid and calcitonin
- D. Insulin, glucagon, norepinephrine and melatonin.

Answer: B



Watch Video Solution

177. Hormone is

- A. Enzyme
- B. Chemical messenger

C. Excretory product

D. Glandular secretion.

Answer: B



Watch Video Solution

178. Pituitary gland is found in

A. Trachea

B. Abdomen

C. Gonads

D. Brain.

Answer: D



[Watch Video Solution](#)

179. Renin is produced by

- A. Testis
- B. Adrenals
- C. Pituitary
- D. Ovary

Answer: D



[Watch Video Solution](#)

180. Immune disease in which body destroys the ill-functioning thyroid is

- A. Simmond's disease
- B. Cretinism
- C. Hashimoto's disease
- D. Myxoedema.

Answer: C



Watch Video Solution

181. Which of the following is known as master endocrine gland

A. Pituitary

B. Thyroid

C. Parathyroid

D. Pineal.

Answer: A



Watch Video Solution

182. Which of the following is called emergency gland of the body?

A. Testis

B. Adrenal

C. Thymus

D. Pituitary.

Answer: B



Watch Video Solution

183. Function of thyrocalcitonin :

A. Elevates K^+ level in blood

B. Lowers Ca^{2+} level in blood

C. Elevates Ca^{2+} level in blood

D. None of the above

Answer: B



[Watch Video Solution](#)

184. Hormone connected with increase rate of gluconeogenesis, blood pressure and heart beat is

- A. Insulin
- B. Glucagon
- C. Adrenaline
- D. FSH.

Answer: C



[Watch Video Solution](#)

185. Secretion of which of the following is under control of neurosecretory nerve cells?

- A. Pineal
- B. Adrenal cortex
- C. Anterior pituitary
- D. Posterior pituitary.

Answer: D

 [Watch Video Solution](#)

186. Iodine deficiency to Frog will lead to

- A. Accelerated metamorphosis

B. Inhibition of metamorphosis

C. Development of minature frog

D. Development of a giant frog.

Answer: B



Watch Video Solution

187. Secretin hormone is secreted by stimulates

A. Duodenum-pancreas

B. Duodenum-liver

C. Stomach - gastric glands

D. Thyroid - thyroid.

Answer: A



Watch Video Solution

188. Zona glomerulosa or glomerular area of adrenal cortex is involved in

- A. Water and electrolyte balance
- B. Carbohydrate metabolism
- C. Steroid and hormone secretion
- D. Blood pressure.

Answer: A



Watch Video Solution

189. Thyroidectomised tadpole will metamorphose by administration of

A. Pituitary extract

B. Thyroxine

C. TSH

D. Iodine.

Answer: B



Watch Video Solution

190. Removal or absence of thymus in early life shall bring about

A. Lack of lymphocytes

B. Lack of antibodies

C. Lack of lymph nodes

D. All the above.

Answer: D



Watch Video Solution

191. Daily rhythms are usually associated with

Or

One of the following endocrine gland functions as a biological clock and a neurosecretory transducer

A. Pituitary

B. Thymus

C. Pineal

D. Hypothalamus.

Answer: C



Watch Video Solution

192. Which of the following is related to obesity low plasma Na^+ high K^+ and increased blood pressure

A. Growth hormone

B. Cortisol

C. Thyroxine

D. Adrenaline.

Answer: B

 [Watch Video Solution](#)

193. Androgens are produced by

A. Pituitary

B. Parathyroid

C. Thyroid

D. Adrenals.

Answer: D

 [Watch Video Solution](#)

194. Cholecystikin and duocrin are secreted by

- A. Intestine
- B. Pancreas
- C. Adrenal cortex
- D. Thyroid gland.

Answer: A



Watch Video Solution

195. Hormone oxytocin controls

- A. Growth

B. Lactation

C. Child birth

D. Both B and C.

Answer: D



Watch Video Solution

196. Restlessness, intolerance to temperature and increased metabolism is due to

A. Thyrotoxicosis

B. ACTH deficiency

C. Pituitary deficiency

D. Calcitonin deficiency.

Answer: A

 [Watch Video Solution](#)

197. Endocrine gland responsible for immunity is

A. Pineal

B. Thymus

C. Pituitary

D. Adrenal.

Answer: B

 [Watch Video Solution](#)

198. Disease caused by deficiency of parathormone is

- A. Cretinism
- B. Hypercalcemia
- C. Tetany
- D. Myxoedema.

Answer: C

 [Watch Video Solution](#)

199. Cretinism is due to less secretion of

- A. Thyroid

B. Pituitary

C. Parathyroid

D. Adrenal.

Answer: A



Watch Video Solution

200. An endocrine gland that atrophies at the age of 14-16 years is

A. Adrenal

B. Pineal

C. Thymus

D. Pituitary.

Answer: C

 [Watch Video Solution](#)

201. Human placenta is

A. hCG and progesterone

B. Calcitonin

C. Relaxin

D. Vasopressin.

Answer: A

 [Watch Video Solution](#)

202. Which are identical ?

- A. ACTH and adrenaline
- B. hCG and progesterone
- C. Calcitonin and oxytocin
- D. Vasopressin and ADH.

Answer: D



Watch Video Solution

203. Which hormone promotes cell division, protein synthesis and bone growth?

A. ADH

B. ACTH

C. PTH

D. GH.

Answer: D



Watch Video Solution

204. Which of the following takes part in salt balancing?

A. Mineralocorticoid

B. Glucocorticoid

C. Somatotrophin

D. Follitrophin.

Answer: A

 [Watch Video Solution](#)

205. Which one exclusively comprises endocrine glands

- A. Pituitary, Salivary, Adrenals, Ovary, Testis
- B. Pituitary, Thyroid, Adrenals, Ovary, Testis
- C. Salivary, Thyroid, Adrenals, Ovary, Testis
- D. Adrenals, Ovary, Testis, Salivary, Liver.

Answer: B

 [Watch Video Solution](#)

206. Goitre influences

- A. Speech
- B. Excretion
- C. Metabolism
- D. Vision.

Answer: C



Watch Video Solution

207. Pheromones are chemical messengers that help insect in (a) Communication (b) Sending alarm signals (c) Marking trails (d) Attracting males (e) Killing pests

- A. Produced by endocrine glands
- B. mRNAs
- C. Chemicals used in animal communication
- D. Proteins.

Answer: C

 [Watch Video Solution](#)

208. Cretinism and myxoedema are due to :

- A. Decreased production of thyroxine
- B. Increased production of thyroxine
- C. Excess GH

D. Decreased insulin.

Answer: A

 [Watch Video Solution](#)

209. Injection of glucagon will

- A. Cause hypoglycemia
- B. Cause galactosemia
- C. Increase blood sugar
- D. Cause goitre.

Answer: C

 [Watch Video Solution](#)

210. Hormone produced more in dark is

- A. Thyroxine
- B. Melatonin
- C. Adrenaline
- D. Insulin.

Answer: B



Watch Video Solution

211. Which of the following is not involved in the endocrine secretion ?

- A. Leydig cell
- B. Lutein cell
- C. Para-follicular cells of thyroid
- D. Kupffer cells.

Answer: D

 [Watch Video Solution](#)

212. Gull's disease is related to deficient working of

- A. Thyroid
- B. Parathyroid
- C. Adrenal cortex

D. Gonads

Answer: A

 [Watch Video Solution](#)

213. Hormone melatonin is secreted by

- A. Adrenal
- B. Thymus
- C. Pituitary
- D. Pineal.

Answer: D

 [Watch Video Solution](#)

214. Hormone controlling $Na^+ - K^+$ ion concentration is

- A. Aldosterone
- B. Anti-diuretic hormone
- C. Progesterone
- D. Pitocin.

Answer: A

 [Watch Video Solution](#)

215. Adrenal cortex produces

- A. Tyrosine

B. Tryptophan

C. Cholesterol

D. Glycoproteins.

Answer: C



Watch Video Solution

216. Who is the "Father of Endocrinology"?

A. Einthoven

B. Addison

C. Pasteur

D. Whittaker.

Answer: B

 [Watch Video Solution](#)

217. On seeing a Tiger, the heart beat and blood pressure increase due to release of hormone

A. Adrenaline

B. Thyroxine

C. Parathormone

D. Corticoids.

Answer: A

 [Watch Video Solution](#)

218. A person has protuding eyes, tachycarida and higher body temperature. He is suffering from

- A. Cretinism
- B. Hyperthyroidism
- C. Diabetes
- D. Acromegaly.

Answer: B



Watch Video Solution

219. Hormone controlling metabolism is

- A. ACTH from pituitary

B. FSH from pituitary

C. Thyroxine from thyroid

D. Adrenaline from adrenal medulla.

Answer: C



Watch Video Solution

220. Pituitary gland is crushed and injected in Frog. Frog will

A. Start laying eggs almost immediately

B. Change colour

C. Undergo metamorphosis

D. Die.

Answer: B

 [Watch Video Solution](#)

221. Which of the following is hypoglycemic hormone

A. Insulin

B. Glucagon

C. Thyroxine

D. ACTH.

Answer: A

 [Watch Video Solution](#)

222. Given below are assertion and reason. Point out if both are true and reason is correct explanation (A), both are true but reason is not correct explanation (B), assertion is true but reason is wrong (C) and both are wrong (D).
Assertion. In a tadpole, if thyroid is cut, metamorphosis stops. Reason. TSH is not secreted.

A. a

B. b

C. c

D. d

Answer: C



Watch Video Solution

223. Hormones are produced by

- A. Apocrine glands
- B. Endocrine glands
- C. Heterocrine glands
- D. Both B and C.

Answer: D



Watch Video Solution

224. Excess secretion of growth hormone in adults leads to

_____.

- A. Gigantism
- B. Acromegaly
- C. Grave's disease
- D. Gull's disease

Answer: B

 [Watch Video Solution](#)

225. Give biological reason for the following statement:

Some women have facial hair like beard and moustache.

- A. Hypersecretin of adrenal cortex
- B. Hypersecretion of thyroxine

C. Hyposecretion of adrenaline

D. Hyposecretion of thyroxine.

Answer: A



Watch Video Solution

226. Name the hormone secreted by adrenal cortex which controls water and salt concentration in urine,Â

A. Adrenaline

B. Aldosterone

C. Norepinephrine

D. Corticosterone

Answer: D

 [Watch Video Solution](#)

227. Cretinism is produced when one of the following is deficient

- A. Adrenaline
- B. Growth hormone
- C. Parathormone
- D. Thyroxine.

Answer: D

 [Watch Video Solution](#)

228. Antiageing hormone is

- A. Thyroxine
- B. Melatonin
- C. Estrogen
- D. Testosterone.

Answer: B



Watch Video Solution

229. Which hormone stimulates the expulsion of milk during feeding of baby

- A. Prolactin

B. Luteinising hormone

C. Estrogen

D. Testosterone.

Answer: A



Watch Video Solution

230. During parturition

A. Luteinising hormone

B. Estrogen

C. Progesterone

D. Oxytocin.

Answer: D

 [Watch Video Solution](#)

231. Which of the following hormones is not secreted by anterior pituitary?

A. ADH

B. GH

C. Prolactin

D. FSH.

Answer: A

 [Watch Video Solution](#)

232. Tadpoles will undergo metamorphosis if they are

- A. Fed on Frog eggs
- B. Provided with suitable environment
- C. Injected thyroxine
- D. Injected gonadotrophic hormones.

Answer: C



Watch Video Solution

233. Secretion of ductless glands are known as

- A. Hormones
- B. Pheromones

C. Enzymes

D. Mucoids

Answer: A



Watch Video Solution

234. Enteroendocrine glands are present in

A. Stomach

B. Intestine

C. Oesophagus

D. Both A and B.

Answer: D



[Watch Video Solution](#)

235. Intermediate lobe of pituitary secretes a hormone

- A. Oxytocin
- B. Melanocyte stimulating hormone
- C. Corticotropin releasing hormone
- D. Thyrotropin releasing hormone.

Answer: B



[Watch Video Solution](#)

236. Ductless glands are called

- A. Alveolar glands
- B. Tubular glands
- C. Exocrine glands
- D. Endocrine glands.

Answer: D

 [Watch Video Solution](#)

237. Osteoporosis is caused by

- A. Ca^{2+} deficiency
- B. Na^{+} deficiency
- C. K^{+} deficiency

D. Parathormone hypersecretion.

Answer: D

 [Watch Video Solution](#)

238. Hormone that causes glycogenolysis and gluconeogenesis

A. Aldosterone

B. Insulin

C. Glucagon

D. ACTH.

Answer: C

 [Watch Video Solution](#)

239. The hormone secreted by intermediate lobe of pituitary is

- A. Oxytocin
- B. MSH
- C. Vasopressin
- D. FSH

Answer: B

 [Watch Video Solution](#)

240. During early pregnancy progesterone is secreted by

A. Corpus luteum

B. FSH

C. Thyroid

D. None of the above

Answer: A



Watch Video Solution

241. Substances formed at one place and expressing effect at a distant place are called

A. Pheromones

B. Enzymes

C. WBC

D. Hormones.

Answer: D



Watch Video Solution

242. Thyrotrophic releasing factor (TRF) is secreted by

A. Hypothalamus

B. Adenohypophysis

C. Pars intermedia

D. Neurohypophys

Answer: A



[Watch Video Solution](#)

243. Sella turcica is a

- A. Band connecting cerebaral hemispheres
- B. Foramen of skull
- C. Skull depression for lodging pituitary
- D. Lodging of heart

Answer: C



[Watch Video Solution](#)

244. The cause of cretinism is

A. Hypoparathyroidism

B. Hypothyroidism

C. Hyperparathyroidism

D. Hyperthyroidism.

Answer: B



Watch Video Solution

245. Menstruation is caused by

A. FSH

B. LH

C. Oestrogen

D. Progesterone.

Answer: B

 [Watch Video Solution](#)

246. Hormone responsible for aggressive behaviour of an animal is

A. Adrenaline

B. Thyroxine

C. ADH

D. Testosterone.

Answer: A



Watch Video Solution

247. Thyroxine acts on every organ except

- (a) Brain
- (b) Testis
- (c) Thyroid
- (d) All the above

A. Brain

B. Testis

C. Thyroid

D. All the above.

Answer: C



Watch Video Solution

248. Pick up the correct combination

- | | |
|-----------------------------|----------------------------|
| <i>a.</i> Addison's disease | <i>i.</i> Pituitary |
| <i>b.</i> Tetany | <i>ii.</i> Thyroid |
| <i>c.</i> Acromegaly | <i>iii.</i> Adrenal cortex |
| <i>d.</i> Myxoedema | <i>iv.</i> Parathyroid |

A. a-iii, b-ii, c-I, d-iv

B. a-I, b-iii, c-ii, d-iv

C. a-iii, b-iv, c-I, d-ii

D. a-iii, b-iv, c-ii, d-i

Answer: C



Watch Video Solution

249. Parathormone induces

- A. Increase in blood sugar
- B. Increase in serum calcium
- C. Decrease in serum calcium
- D. Decrease in blood sugar level.

Answer: B



Watch Video Solution

250. Under-secretion of adrenal cortex causes

- A. Addison's disease
- B. Cretinism

C. Dwarfism

D. Sterility

Answer: A



Watch Video Solution

251. The gonadotropic hormones are secreted by

A. Testosterone and androsterone

B. Estrogen and progesteron

C. LH and FSH

D. Prolactin and luteotropin

Answer: C



[Watch Video Solution](#)

252. Second messenger is

A. ATP

B. cAMP

C. GTP

D. ATP and AMP

Answer: B



[Watch Video Solution](#)

253. Acromegaly/Gigantism is caused by

- A. Hypersecretion of FSH
- B. Hyposecretion of ACTH
- C. Hypersecretion of ACTH
- D. Hypersecretion of GH

Answer: D

 [Watch Video Solution](#)

254. Brain sand occurs in

- A. Thymus
- B. Pineal
- C. Thyroid

D. Pituitary

Answer: B

 [Watch Video Solution](#)

255. Glucose level of blood is controlled by

A. Liver

B. Gall bladder

C. Ileum

D. Duodenum

Answer: A

 [Watch Video Solution](#)

256. What is true about neurohypophysis

- A. Stores hormones produced by adenohypophysis
- B. Functionless in humans
- C. Stores and releases neurohormones secreted by hypothalamus
- D. Secretes its own hormone.

Answer: C



Watch Video Solution

257. α -cells of pancreas are destroyed. The process affected is

- A. Glycogenolysis
- B. Glycogenesis
- C. Proteolysis
- D. Cytolysis.

Answer: A



[Watch Video Solution](#)

258. Hormone useful in suppressing allergies, rheumatoid arthritis and tissue inflammation is

A. Mineralocorticoid

B. Glucocorticoid

C. Thyroxine

D. Adrenaline.

Answer: B



Watch Video Solution

259. Parathormone is secreted during

A. Increased Ca^{2+} level in blood

B. Decreased blood Ca^{2+} level

C. Increased blood sugar level

D. Decreased blood sugar level.

Answer: B

 [Watch Video Solution](#)

260. Secretion of gastric juice is controlled by

A. Enterogasterone

B. Cholecystokinin

C. Gastrin

D. Motilin

Answer: C

 [Watch Video Solution](#)

261. Cholecystokinin is

- A. Bile pigment
- B. Enzyme
- C. Lipid
- D. Gastrointestinal hormone.

Answer: D



Watch Video Solution

262. The one used for treatment of thyroid cancer is

- A. Ra-224

B. I-131

C. U-238

D. C-14

Answer: B



Watch Video Solution

263. When both ovaries are removed from a rat which hormone is decreased in blood?

A. Oxytocin

B. Prolactin

C. Estrogen

D. Gonadotropin releasing factor.

Answer: C

 [Watch Video Solution](#)

264. Autoimmune thyroiditis results in

A. Simmond's disease

B. Minimata disease

C. Grave's disease

D. Hashimoto disease

Answer: D

 [Watch Video Solution](#)

265. Endocrine glands

- A. Pour their secretion into blood by means of ducts
- B. Do not possess ducts
- C. Sometimes do not have ducts
- D. Always possess ducts.

Answer: B



Watch Video Solution

266. Hormone responsible for ovulation and development of corpus luteum is

A. FSH

B. LH

C. Luteotropic hormone

D. ICSH

Answer: B



Watch Video Solution

267. Tetany is caused by

A. Hypoparathyroidism

B. Hyperparathyroidism

C. Hypothyroidism

D. Hyperthyroidism

Answer: A

 [Watch Video Solution](#)

268. Which one is correctly matched

- A. Relaxin-Gigantism
- B. Prolactin-Cretinism
- C. Parathyroid hormone - Tetany
- D. Insulin-Diabetes insipidus

Answer: C

 [Watch Video Solution](#)

269. A person passes much urine and drinks much water but his blood glucose level is normal. This condition may be the result of

- A. Increased secretion of glucagon
- B. Fall in glucose released in urine
- C. Reduction in insulin secretion
- D. Reduction in vasopressin secretion in posterior pituitary.

Answer: D



Watch Video Solution

270. The source of somatostatin is same as that of

- A. Insulin and glucagon
- B. Vassorpressin and oxytocin
- C. Thyroxine and calcitonin
- D. Somatotropin and prolactin.

Answer: B



Watch Video Solution

271. The patient in the picture possible depicts an instance of



A. Myxoedema

B. Acromegaly

C. Cretinism

D. Simple goitre

Answer: B



[Watch Video Solution](#)

272. Extraction of sympathetic nervous system is

- A. Adrenal medulla
- B. Adrenal cortex
- C. Pineal
- D. Neurohypophysis.

Answer: A



[Watch Video Solution](#)

273. Hypothyroidism causes

- A. Bohr disease
- B. Diabetes mellitus
- C. Cretinism and myxoedema
- D. Diabetes insipidus.

Answer: C

 [Watch Video Solution](#)

274. Androgens are produced by

- A. Adrenals and ovaries
- B. Ovaries and testes
- C. Testes and adrenals

D. Adrenals only.

Answer: C

 [Watch Video Solution](#)

275. Which endocrine gland becomes inactive in old age

A. Thyroid

B. Thymus

C. Pancreas

D. Spleen.

Answer: B

 [Watch Video Solution](#)

276. Growth hormone is produced by

- A. Thyroid
- B. Neurohypophysis
- C. Intermediate hypophysis
- D. Adenohypophysis

Answer: D



Watch Video Solution

277. Hormone connected with increased rate of glucogenesis, blood pressure and heart beat is

A. Prolactin

B. LH

C. FSH

D. Adrenaline

Answer: D



Watch Video Solution

278. Disease caused by hyper-or-hypo secretion of thyroxme
isÂ

A. Cretinism

B. Acromegaly

C. Goitre

D. both a and c

Answer: C



Watch Video Solution

279. Pancrease secrete hormones

A. Vasopression and oxytocin

B. Insulin and glucagon

C. FSH and LH

D. Epinephrine and norepinephrine.

Answer: B



[Watch Video Solution](#)

280. Which of the following endocrine glands is unpaired?

A. Adrenal

B. Parathyroid

C. Gonad

D. Pituitary

Answer: D



[Watch Video Solution](#)

281. Chromophil cells are found in

A. Anterior pituitary

B. Thymus

C. Adrenal cortex

D. Testis.

Answer: A



Watch Video Solution

282. Herring bodies are found in

A. Adenohypophysis

B. Neurohypophysis

C. Thyroid

D. Adrenal medulla.

Answer: B

 [Watch Video Solution](#)

283. Failure of release of ADH causes

A. Diabetes insipidus

B. Diabetes mellitus

C. Hepatitis

D. Coronary thrombosis.

Answer: A

 [Watch Video Solution](#)

284. Gastrin is secreted by

A. Pancreas

B. Intestine

C. Liver

D. Stomach.

Answer: D



Watch Video Solution

285. Which one is a correct match

A. Luteinising hormone- ovulation

B. Insulin - Diabetes insipidus

C. Parathormone - Diabetes mellitus

D. Thyroxine- Tetany.

Answer: A



Watch Video Solution

286. Which of the following hormones is not secreted by human placenta

A. Human chorionic gonadotropin

B. Estrogen

C. Prolactin

D. Progesterone.

Answer: C

 [Watch Video Solution](#)

287. Which one of the following is an amine hormone ?

A. Progesterone

B. Epinephrine

C. Estrogen

D. Relaxin.

Answer: B

 [Watch Video Solution](#)

288. Given below are assertion and reason. Point out if both are true with reason being correct explanation (A), both true but reason is not correct explanation (B), assertion true but reason is wrong (C), both are wrong (D).

Assertion. Diabetes insipidus is marked by excessive urination and too much thirst of water.

Reason. Antidiuretic hormone (ADH) is secreted by posterior lobe of pituitary.

A. a

B. b

C. c

D. d

Answer: B



Watch Video Solution

289. Synthesis of testosterone by leydig cells is stimulated by

A. FSH

B. TSH

C. LTH

D. ICSH

Answer: D



Watch Video Solution

290. The largest endocrine gland in human is

- A. Adrenal
- B. Thyroid
- C. Thymus
- D. Pituitary.

Answer: B



Watch Video Solution

291. Which one is without a specific target organ?

- A. Thyrotropin
- B. Gonadotropin

C. Somatotrophin

D. Adrenocortitropin.

Answer: C



Watch Video Solution

292. Glycoproteinaceous hormone is

A. Erythropoietin

B. Insulin

C. Oxytocin

D. Relaxin.

Answer: A



[Watch Video Solution](#)

293. Hormone prolactin is secreted by

- A. Neurohypophysis
- B. Adenohypophysis
- C. Adrenal cortex
- D. Adrenal medulla.

Answer: B



[Watch Video Solution](#)

294. Insulin deficiency causes

A. Diabetes insipidus

B. Goitre

C. Diabetes mellitus

D. All the above.

Answer: C



Watch Video Solution

295. Increase in glucose level is called

A. Hypoglycemia

B. Uremia

C. Anaemia

D. Hyperglycemia

Answer: D

 [Watch Video Solution](#)

296. Name a molecules which catalyses biological reactions.

A. Vitamins

B. Hormones

C. Enzymes

D. Fats.

Answer: B

 [Watch Video Solution](#)

297. Steroid hormones are derived from

A. Cholesterol

B. Corticoid

C. NAD

D. Protein.

Answer: A



Watch Video Solution

298. Hyposecretion of growth hormone.

A. Acromegaly

B. Cretinism

C. Dwarfism

D. Myxoedema.

Answer: C



Watch Video Solution

299. Somatostatin is produced by ____ cells of pancreas

A. Alfa

B. Beta

C. Delta

D. Acinar.

Answer: C



Watch Video Solution

300. Which one is a gonadotrophic hormone ?

- A. Collip's hormone
- B. Prolactin
- C. Oxytocin
- D. Luteinizing hormone.

Answer: D



Watch Video Solution

301. Which one is endocrine ?

- A. Brunner's gland
- B. Crypts of Lieberkuhn
- C. Pars radiata
- D. Juxtaglomerulus.

Answer: D



Watch Video Solution

302. Deficiency of a hormone cause increase K^+ ions in decrease Na^+ ion in blood. It is caused by

- A. Zona fasciculata

B. Zona glomerata

C. Zona reticulata

D. Zona pellucida.

Answer: B



Watch Video Solution

303. Hormones act on

A. Organ systems

B. Cells

C. Target organs

D. Cell receptors.

Answer: D



Watch Video Solution

304. Trophic hormones are produced by

A. Anterior pituitary

B. Middle pituitary

C. Posterior pituitary

D. Thyroid.

Answer: A



Watch Video Solution

305. Thyroxine is

- A. Follicles of thyroid gland
- B. Stored in follicle cells of thyroid
- C. Inactive form of triiodothyroine
- D. Stored in pituitary gland .

Answer: C



Watch Video Solution

306. Removal of a part of pituitary affected excretory system. It causes

- A. Atrophy of adrenal cortex

B. Atrophy of adrenal medulla

C. Atrophy of adrenal pyramid

D. Atrophy of renal medulla.

Answer: A



Watch Video Solution

307. Acromegaly is due to hypersecretion of a hormone secreted from:

A. Neurohypophysis

B. Adenohypophysis

C. Pars intermedialis

D. Cells of Leyding.

Answer: B

 [Watch Video Solution](#)

308. A patient of diabetes mellitus excretes glucose in urine even when he is kept on a carbohydrate free diet. It is because

- A. Fats are catabolised to form glucose
- B. Amino acids are catabolised in liver
- C. Amino acids are discharged in blood stream from liver
- D. Glycogen from muscles is released in blood stream.

Answer: A



Watch Video Solution

309. Which gland stores hormone before its secretion and then releases it ?

A. Pancreas

B. Pineal

C. Pituitary

D. Thyroid.

Answer: D



Watch Video Solution

310. Hassall's corpuscles are found in

A. Thyroid

B. Thymus

C. Adrenal

D. Pineal.

Answer: B



Watch Video Solution

311. Graves' disease is caused due to

A. Hyperactivity of thymus

B. Hypoactivity of thymus

C. Hyperactivity of thyroid

D. Hypoactivity of thyroid

Answer: C



Watch Video Solution

312. Identify from the following, a hormone produced by the pituitary gland in both males and females but functional only in females.

A. Vasopressin

B. Relaxin

C. Prolactin

D. Somatotropin.

Answer: C



Watch Video Solution

313. Match the columns and find the correct combination

Column I

Column II

- | | |
|-------------------|------------------------|
| (i) ADH | (a) Pituitary |
| (ii) ACTH | (b) Mineralocorticoid |
| (iii) Aldosterone | (c) Diabetes mellitus |
| (iv) Insulin | (d) Diabetes insipidus |
| (v) Adrenaline | (e) Vasodilator |

A. i-a, ii-d, iii-b, iv-c, v-e

B. I-d, ii-b, iii-a, iv-c, v-e

C. i-d, ii-a, iii-c, iv-b, v-e

D. i-d, ii-a, iii-b, iv-c, v-e

Answer: D



Watch Video Solution

314. Which is incorrectly matched

- A. Myxoedema- Swollen facial tissue
- B. Cretinism - Mentally retarded
- C. Grave's disease- Exophthalmos
- D. Insulin - Raised blood glucose

Answer: D



Watch Video Solution

315. Find the incorrect statement.

- A. Gene therapy is a genetic engineering technique used to treat diseases by replacing defective genes with normal genes
- B. Calcitonin is recombinant product used in treatment of infertility
- C. Bt toxin is a biodegradable insecticide got from *Bacillus thuringiensis*
- D. *Trichoderma* provides biocontrol for fungal pathogens

Answer: B



Watch Video Solution

316. Find out the correct match

A. Thyroid- Hyperactivity in young children causes cretinism

B. Parathyroid- Secretes parathormone which promotes movement of calcium ion from blood into bones during calcification

C. Thymus - Starts undergoing atrophy after puberty

D. Pancreas - Delta cells of islets of Langerhans secrete a hormone which stimulates glycolysis in liver.

Answer: C



Watch Video Solution

317. FSH is secreted by

- A. Anterior lobe of pituitary
- B. Hypothalamus
- C. Gonads
- D. Posterior lobe of pituitary.

Answer: A



Watch Video Solution

318. Stress emergency hormone is

- A. Oxytocin

B. Vasopressin

C. Adrenaline

D. Sex hormone.

Answer: C



Watch Video Solution

319. According to the accepted concept of hormone action, if receptor molecules are removed from target organs, then the target organ will

A. Continue to respond to hormone but in opposite way

B. Continue to respond to hormone without any difference

C. Continue to respond to hormone but will require higher concentration

D. Stop responding to hormone.

Answer: D

 [Watch Video Solution](#)

320. Chemicals synthesised by one organism that affect behaviour of another member of the same species are called

A. Enzymes

B. Hormones

C. Flavoids

D. Pheromones.

Answer: D

 [Watch Video Solution](#)

321. Endostyle is similar to

A. Parathyroid

B. Thyroid

C. Thymus

D. Thalamus.

Answer: B

 [Watch Video Solution](#)

322. Placenta produces hormone

A. GH

B. ACTH

C. Progesterone

D. Gastrin.

Answer: C



Watch Video Solution

323. Match the columns :

Column I

a Adenohypophysis *p*
b Adrenal medulla *q*
c Parathyroid gland *r*
d Thymus gland *s*

Column II

Epinephrine
Somatotropin
Thymosine
Calcitonin

A. a-q, b-p, c-s, d-r

B. a-s, b-r, c-q, d-p

C. a-r, b-p, c-s, d-q

D. a-p, b-q, c-q, d-s

Answer: A



Watch Video Solution

324. Find out the correct statement.

A. Endocrine glands regulate neural activity but not vice

versa

B. Neurons regulate endocrine activity but not vice

versa

C. Endocrine glands regulate neural activity and nervous

system regulates endocrine glands

D. Neither hormones control neural activity nor the

neurons control endocrine activity

Answer: C



Watch Video Solution

325. Sertoli cells are regulated by the pituitary hormone known as

- A. LH
- B. FSH
- C. GH
- D. Prolactin.

Answer: B



Watch Video Solution

326. Which one of the following is not a second messenger in hormone action ?

A. cAMP

B. cGMP

C. Calcium

D. Sodium/Mg

Answer: D



Watch Video Solution

327. Steroid hormone regulating glucose metabolism

A. Cortisone

B. Cortisol

C. Corticosterone

D. 11- deoxycorticosterone.

Answer: B



Watch Video Solution

328. Which of the following is an accumulation and release centre of neurohormones ?

- A. Posterior pituitary
- B. Anterior pituitary
- C. Interior lobe of pituitary
- D. Hypothalamus.

Answer: A

 [Watch Video Solution](#)

329. Which hormone causes dilation of blood vessels, increased oxygen consumption and gluconeogenesis?

- A. Glucagon
- B. ACTH
- C. Insulin
- D. Adrenaline.

Answer: D

 [Watch Video Solution](#)

330. Which of the following hormones are produced in the hypothalamus and stored in the posterior pituitary ?

- A. ASH and oxytocin
- B. FSH and LH
- C. TSH and STH
- D. ACTH and MSH.

Answer: A



Watch Video Solution

331. Match the columns :

Column I

- a* Hypothalamus
- b* Anterior pituitary
- c* Testis
- d* Ovary

Column II

- p* Relaxin
- q* Estrogen
- r* FSH and LH
- s* Androgens
- t* Gonadotropin releasing hormone

A. a-p, b-q, c-s, d-r

B. a-r, b-t, c-s, d-q

C. a-t, b-r, c-s, d-q

D. a-t, b-r, c-q, d-s.

Answer: C



Watch Video Solution

332. Assertion: Our body secretes adrenaline in intense cold.

Reason: Adrenaline raises metabolic rate.

A. a

B. b

C. c

D. d

Answer: A



Watch Video Solution

333. The hormones that initiate ejection of milk, stimulates milk production and growth of ovarian follicles are

respectively known as

- A. PRL, OT and LH
- B. OT, PRL and FSH
- C. LH, PRL and FSH
- D. PRH, OT and LH

Answer: B



Watch Video Solution

334. In heart cells, which one serves as a second messenger, speeding up muscle cell contraction in response to adrenaline ?

- A. cAMP

B. cGMP

C. GTP

D. ATP

Answer: A



Watch Video Solution

335. Hypothyroidism in adults and hyperparathyroidism will respectively, lead to

A. Myxoedema and cretinism

B. Graves' disease and Hashimoto's disease

C. Myxoedema and osteitis fibrosa cystica

D. Addison's disease and cretinism

Answer: C

 [Watch Video Solution](#)

336. Daily rhythms are associated with

A. Adrenal gland

B. Thyroid gland

C. Thymus gland

D. Pineal gland.

Answer: D

 [Watch Video Solution](#)

337. A substance called ADH is

- A. High energy compound formed by glycogenesis in liver cells
- B. Pituitary secretion which promotes reabsorption of water from glomerular filtrate
- C. Hormone that promotes glycogenesis in liver cells
- D. Enzyme secreted by cells of intestinal wall which hydrolyses dipeptides into amino acids.

Answer: B



Watch Video Solution

338. During summer season, which hormone concentration is maintained at high level ?

A. Glucagon

B. ADH

C. Insulin

D. Relaxin.

Answer: B



Watch Video Solution

339. Which of the following statements are false / true

(A) Calcitonin regulates the metabolism of calcium

(B) Oxytocin stimulates contraction of uterine muscles

during birth

(C) Grave's disease is caused by malfunctioning of adrenal gland

(D) ADH stimulates absorption of water and increase the urine productions

A. a and c are true, b and d are false

B. a and d are true b and c are false

C. a and b are true, c and d are false

D. a, b and c are true, d only false

Answer: C



Watch Video Solution

340. With increasing age, secretion of which of the following is reduced to half

A. HGH

B. Estrogen

C. GTH

D. Melatonin.

Answer: D



Watch Video Solution

341. Steroid hormones have an effect

A. Slow and short term

- B. Fast and short term
- C. Fast and long lasting
- D. Slow and long lasting

Answer: D

 [Watch Video Solution](#)

342. Percentage of chromophobe cells in pituitary is

- A. 0.15
- B. 0.25
- C. 0.35
- D. 0.5

Answer: C



Watch Video Solution

343. Pineal gland of human brain secretes melatonin concerned with

- A. Colouration of skin
- B. Sleep
- C. Anger
- D. Body temperature.

Answer: B



Watch Video Solution

344. Which is not produced by anterior pituitary

A. FSH

B. MSH

C. Oxytocin

D. Prolactin.

Answer: C



Watch Video Solution

345. Element present in thyroxine is got from

A. Laminaria

B. Polysiphonia

C. Porphyra

D. Gelidium.

Answer: A



Watch Video Solution

346. The condition of having excess of potassium in the blood is

A. Hypercholestrolemia

B. Hyperkalaemia

C. Osteomalacia

D. Hyperexcitability.

Answer: B



Watch Video Solution

347. Increase in bleeding time and delay in blood coagulation is due to the deficiency of which hormone?

A. Adrenaline

B. Noradrenaline

C. Parathormone

D. Thyroxine.

Answer: C



Watch Video Solution

348. Enterogasterone is secreted by

- A. Gastric mucosa
- B. Oesophageal mucosa
- C. Saliva
- D. Duodenal mucosa.

Answer: D

 [Watch Video Solution](#)

349. ADH acts on

- A. Loop of Henle
- B. Collecting tubule

C. Vasa efferentia

D. Vasa deferentia.

Answer: B



Watch Video Solution

350. Which is steroid hormone

A. Epinephrine

B. Thyroxine

C. Estrogen

D. Gonadotropin

Answer: C



[Watch Video Solution](#)

351. Which one is a protein hormone

- A. Cortisol
- B. Thyroxine/insulin
- C. Estrogen
- D. All the above.

Answer: B



[Watch Video Solution](#)

352. Adrenal gland is derived from

A. Endoderm

B. Ectoderm

C. Mesoderm

D. Ectoderm and mesoderm

Answer: D



Watch Video Solution

353. Which is not involved as second messenger in Ca^{2+} mediated hormone ?

A. cAMP

B. DAG

C. IP_3

D. Phospholipase.

Answer: D



Watch Video Solution

354. Insulin receptors are

A. Trimeric protein

B. G-protein

C. Extrinsic protein

D. Intrinsic protein

Answer: A



Watch Video Solution

355. Which one is correct hormone with its source cells

- A. α -glucagon, β -insulin, δ -somatostatin
- B. α -insulin, β -glucagon, δ -somatostatin
- C. δ -insulin, α -somatostatin, β -glucagon
- D. α -somatostatin, β -insulin, δ -glucagon.

Answer: A



Watch Video Solution

356. RAAS secretes

- A. Glucocorticoids
- B. Mineralocorticoids
- C. Both A and B
- D. None of the above

Answer: B

 [Watch Video Solution](#)

357. Compared to a bull a bullock is docile because of

- A. High cortisone level
- B. High thyroxine
- C. Low blood testosterone

D. Low adrenaline/noradrenaline in blood.

Answer: C

 [Watch Video Solution](#)

358. Feeling the tremors of an earthquake, a scared resident of seventh floor of a multistoreyed building starts climbing down the stairs rapidly. Which hormone initiated this action?

A. Glucagon

B. Adrenaline

C. Gastrin

D. Thyroxine.

Answer: B



Watch Video Solution

359. Growth hormone is secreted by

- A. Acidophilic α -cells
- B. Acidophilic β -cells
- C. Basophilic α -cells
- D. Basophilic β -cells.

Answer: A



Watch Video Solution

360. Osteoporosis disease is caused by hypersecretion of

A. Thyroid

B. Adrenals

C. Parathyroid

D. Pituitary

Answer: B



Watch Video Solution

361. Which one of the following four glands is correctly matched with the accompanying description ?

- A. Pancreas -Delta cells of islets of Langerhans secrete a hormone which stimulates glycolysis in liver
- B. Thyroid-Hyperactivity in young children causes cretinism
- C. Thymus-Starts undergoing atrophy after puberty
- D. Parathyroid- Secretes parathormone that promotes movement of Ca^{2+} ions from blood into bones during calcification.

Answer: C



Watch Video Solution

362. Match the columns and find out correct combination :

Column I

Column II

- | | |
|-------------------------|---------------------------|
| (a) Adrenaline | 1. Myxoedema |
| (b) Hyperparathyroidism | 2. Accelerates heart beat |
| (c) Oxytocin | 3. Water balance |
| (d) Hypothyroidism | 4. Child birth |
| (e) Aldosterone | 5. Demineralisation |

A. a-2, b-5, c-4, d-1, e-3

B. a-5, b-3, c-2, d-4, e-1

C. a-3, b-4, c-5, d-1, e-2

D. a-2, b-3, c-4, d-5, e-1

Answer: A



Watch Video Solution

363. Spermatogenesis is promoted by

- A. Oestrogen
- B. Progesterone
- C. Oxytocin
- D. Testosterone.

Answer: D



Watch Video Solution

364. In thyroid follicle which type of epithelial tissue is present ?

- A. Squamous

B. Cuboidal

C. Transitional

D. Columnar.

Answer: B



Watch Video Solution

365. Identify the placental hormone

A. Insulin

B. Vasopressin

C. Somatotrophic hormone

D. Human chorionic hormone (h CG)

Answer: D



Watch Video Solution

366. Mark the correct sets

Endocrine Gland	Hormone disorder	Deficiency
(a) Neurohypophysis	Vasopressin	Diabetes insipidus
(b) Adrenal cortex	Corticosteroids	Addison's disease
(c) Parathyroid glands	Parathormone	Myxoedema
(d) Thyroid gland	Calcitonin	Acromegaly

A. b,c

B. c,d

C. a,b

D. a,d

Answer: C



Watch Video Solution

367. Posterior lobe of pituitary contains cells called

- A. Acidophils
- B. Basophils
- C. Chromophils
- D. Pituicytes.

Answer: D



Watch Video Solution

368. Hormone which is more active than T_4 is

A. T_1

B. T_2

C. T_3

D. T_5

Answer: C



Watch Video Solution

369. A cleft occurs in hypophysis between

A. Median eminence and stalk

B. Hypophysial stalk and pars nervosa

C. Pars tuberalis and pars distalis

D. Pars distalis and pars intermedia.

Answer: D

 [Watch Video Solution](#)

370. Hormone stimulating iodine uptake is

A. Thyroxine

B. TSH

C. MSH

D. Prolactin.

Answer: B



371. Given below are assertion and reason. Point out if both are true and reason is correct explanation (A), both are true but reason is not correct explanation (B), assertion is true but reason is wrong (C) and both are wrong (D).
Assertion. Diabetes insipidus is marked by excessive urination and too much thirst. Reason. Antidiuretic hormone is secreted by posterior lobe of pituitary.

A. a

B. b

C. c

D. d

Answer: B



Watch Video Solution

372. Which one of the following statements is correct?

A. Neurons regulate endocrine activity but not vice

versa

B. Endocrine glands regulate neural activity and

nervous system regulates endocrine glands

C. Neither hormones control neural activity nor

neurons control endocrine activity

D. Endocrine glands regulate neural activity but not vice

versa.

Answer: B



Watch Video Solution

373. The function of pineal body is to

- A. Control sexual behaviour
- B. Regulate period of puberty
- C. Lighter skin colour
- D. All the above.

Answer: D



Watch Video Solution

374. Find the correct answers about body coordination

1. Nervous system 2. Circulatory system

3. Endocrine system 4. Excretory system.

(a) 1,2,3 correct

(b) 1,2 correct

(c) 2,4 correct

(d) 1,3 correct

A. 1,2,3 correct

B. 1,2 correct

C. 2,4 correct

D. 1,3 correct.

Answer: D



Watch Video Solution

375. Find the correct answers about LH in females

1. Facilitates luteinisation of granulosa cells of ovulated follicle

2. Called ovulation hormone

3. Helps in milk secretion

4. Activates Leydig cells to secrete androgen.

(a) 1,2,3 correct

(b) 1,2 correct

(c) 2,4 correct

(d) 1,3 correct

A. 1,2,3 correct

B. 1,2 correct

C. 2,4 correct

D. 1,3 correct.

Answer: B



Watch Video Solution

376. Which one of the following is an emergency hormone

Or

When an animal is angry and wants to fight, the hormone that is secreted is

- (a) Aldosterone
- (b) Calcitonin
- (c) Thyroxine
- (d) Adrenaline

A. Aldosterone

B. Calcitonin

C. Thyroxine

D. Adrenaline

Answer: D

 [Watch Video Solution](#)

377. Which one of the following pairs of organs includes only the endocrine glands?

A. Thymus and testes

B. Adrenal and ovary

C. Parathyroid and adrenals

D. Pancreas and parathyroid.

Answer: C

 [Watch Video Solution](#)

378. In human adult females oxytocin

- A. Stimulates pituitary to secrete vasopressin
- B. Causes strong uterine contractions during parturition
- C. Is secreted by anterior pituitary
- D. Stimulates growth of mammary glands.

Answer: B

 [Watch Video Solution](#)

379. The blood calcium level is lowered by the deficiency of

- A. Parathormone
- B. Thyroxine
- C. Calcitonin
- D. Both calcitonin and parathormone.

Answer: A



Watch Video Solution

380. Pituitary gland of adult rat is surgically removed.

Which of the following endocrine glands will be less effected?

A. Thyroid

B. Gonads

C. Adrenal cortex

D. Adrenal medulla.

Answer: D



Watch Video Solution

381. The hormone that increases the blood calcium level and decreases its excretion by kidneys is

A. Thyroxine

B. Parathormone

C. Calcitonin

D. Insulin.

Answer: B



Watch Video Solution

382. Signaling between cells usually results in the activation of protein

A. Kinases

B. Proteases

C. Lipases

D. Nucleases.

Answer: A



Watch Video Solution

383. Steroid hormones, estrogen and testosterone, bind to

- A. Membrane ion channels
- B. Enzyme-linked membrane receptors
- C. G-Protein linked membrane receptors
- D. Cytoplasmic receptors.

Answer: D



Watch Video Solution

384. Steroid hormones easily pass through the plasma membrane by simple diffusion because they

- A. Are lipid soluble
- B. Are water soluble
- C. Enter through pores
- D. Contain carbon and hydrogen.

Answer: A

 [Watch Video Solution](#)

385. Which of the following hormones does not contain a polypeptide?

(a) Oxytocin

(b) Prostaglandins

(c) Insulin

(d) ADH

A. Oxytocin

B. Prostaglandins

C. Insulin

D. ADH.

Answer: B



Watch Video Solution

386. Which is steroid hormone

A. Relaxin

B. Thyroxine

C. Estrogen

D. Insulin.

Answer: C



Watch Video Solution

387. Obesity of face, hypergluycemia and virilism females is characteristic of

A. Graves' disease

B. Addison's disease

C. Conn's disease

D. Cushing's disease.

Answer: D

 [Watch Video Solution](#)

388. Biogenetic amines are

A. Tryoptophan

B. Tyrosine

C. Glutamic acid

D. Phenylalanine.

Answer: B

 [Watch Video Solution](#)

389. The chemical nature of hormones secreted by α and δ cells of pancreas is

- A. Glycoprotein
- B. Steroid
- C. Polypeptide
- D. Glycolipid.

Answer: C



Watch Video Solution

390. Goitre can occur as a consequence of all the following except

A. Graves' disease

B. Iodine deficiency

C. Pituitary adenoma

D. Excessive intake of exogenous thyroxine.

Answer: D



Watch Video Solution

391. An adenohypophysis hormone which is regulated by feedback mechanism is

(a) TSH

(b) Cortisone

(c) Calcitonin

(d) Oxytocin

A. TSH

B. Cortisone

C. Calcitonin

D. Oxytocin.

Answer: A



Watch Video Solution

392. Match the hormone with its source of secretion

A. Somatostatin	1. Pineal gland
B. Melatonin	2. Corpus luteum
C. Aldosterone	3. Placenta
D. Progesterone	4. Adrenal cortex
E. HCG	5. Islet of Langerhans
	6. Adenohypophysis

A. a-5, b-1, c-6, d-3, e-2

B. a-1, b-2, c-4, d-3, e-5

C. a-2, b-6, c-4, d-5, e-3

D. a-5, b-1, c-4, d-2, e-3

Answer: D



Watch Video Solution

393. Gigantism and acromegaly are due to

A. Hyperthyroidism

B. Hypopituitarism

C. Hyperpituitarism

D. Hypothyroidism.

Answer: C

 [Watch Video Solution](#)

394. Which of the following hormones contains iodine ?

A. Testosterone

B. Thyroxine

C. Adrenaline

D. Insulin.

Answer: B

 [Watch Video Solution](#)

395. A health disorder that results from the deficiency of thyroxine in adults and characterized by (i) a low metabolic rate, (ii) increase in body weight and (iii) tendency to retain water in tissues is

- A. Simple goitre
- B. Myxodema
- C. Hypothyroidism
- D. Cretinism.

Answer: B



Watch Video Solution

396. Parafollicular cells of thyroid secrete hormone for controlling level of

A. (a) K^+

B. (b) Na^+

C. (c) Ca^{2+}

D. (d) Mg^{2+}

Answer: C



Watch Video Solution

397. Master gland, pituitary has a non - functional part in humans

A. Anterior pituitary

B. Pars intermedia

C. Neurohypophysis

D. Pars nervosa.

Answer: B



Watch Video Solution

398. Secretion of mineralocorticoids is under the control of

A. FSH

B. TSH

C. ADH

D. ACTH

Answer: D

 [Watch Video Solution](#)

399. Function of thyroid is under the control of TSH except for

- A. Thyrocalcitonin
- B. Storage of iodine
- C. Thyronine
- D. Thyroxine.

Answer: A

 [Watch Video Solution](#)

400. Which one is not a steroid hormone?

A. Aldosterone

B. Androgen

C. Testosterone

D. Vasopressin.

Answer: D

 [Watch Video Solution](#)

401. The main mineralocorticoid in human is

A. Aldosterone

B. Cortisol

C. Testosterone

D. Progesterone.

Answer: A



Watch Video Solution

402. Chemically epinephrine is

A. Amino acid derivative

B. Steroid

C. Peptide

D. Glucocorticoid

Answer: A



Watch Video Solution

403. Human chorionic gonadotropin is secreted by

A. Chorion

B. Amnion

C. Placenta

D. Corpus luteum.

Answer: C



Watch Video Solution

404. Hormone regulating diurnal rhythm/sleep wake cycle is

- A. Thymosin
- B. Glucagon
- C. Melatonin
- D. Oxytocin.

Answer: C



Watch Video Solution

405. Hypothyroidism during pregnancy causes

A. Goitre

B. Cretinism

C. Diabetes mellitus

D. Hypoglycemia.

Answer: A



Watch Video Solution

406. Which one of the following is not the function of insulin?

A. Increase in permeability of cell membrane to glucose

B. Initiates the conversion of glycogen to glucose

C. Increases oxidation of glucose in cells

D. Initiates the formation of hepatic glycogen from excess of glucose.

Answer: B



Watch Video Solution

407. Brick red colour in Benedict's test indicates percentage of sugar in urine

A. Nil

B. 0.5

C. 1.0

D. 2.0

Answer: D

 [Watch Video Solution](#)

408. Oxytocin mainly helps in

- A. Milk production
- B. Milk ejection
- C. Water absorption in kidneys
- D. Colour change.

Answer: B

 [Watch Video Solution](#)

409. Which of the following stimulates protein metabolism and muscle growth

- A. Estrogen
- B. Testosterone
- C. Progesterone
- D. Oxytocin.

Answer: B



Watch Video Solution

410. Trace element needed for insulin to exert its maximal effect in glucose uptake is

A. Molybdenum

B. Vanadium

C. Chromium

D. Selenium.

Answer: C



Watch Video Solution

411. Which is a 32 amino acid water soluble peptide hormone

A. Gastrin

B. Insulin

C. Glucagon

D. Calcitonin.

Answer: D

 [Watch Video Solution](#)

412. Parathormone influences calcium absorption in the small intestine by regulating the metabolism of

- A. Vitamin C
- B. Vitamin D
- C. Vitamin B
- D. Enterogastrone

Answer: B

 [Watch Video Solution](#)

413. Accelerates heartbeat due to stimulation of adrenal medulla by sympathetic nerves

- A. Adrenaline
- B. Vasopressin
- C. Thyroxine
- D. Collip's hormone.

Answer: A

 [Watch Video Solution](#)

414. Which of the following is not an endocrine gland

A. Liver

B. Pancreas

C. Testes

D. Thymus

Answer: A



Watch Video Solution

415. Which one is related to immunity

A. Pineal gland

B. Thymus

C. Adrenal gland

D. Parathyroid gland.

Answer: B

 [Watch Video Solution](#)

416. Endemic goitre is a state of

- A. Increased thyroid function
- B. Moderate thyroid function
- C. Decreased thyroid function
- D. Normal thyroid function.

Answer: C

 [Watch Video Solution](#)

417. Which one is not produced by basophils of pituitary?

(a) PRL

(b) TSH

(c) FSH

(d) LH.

A. PRL

B. TSH

C. FSH

D. LH.

Answer: A



Watch Video Solution

418. Smooth muscles of arterioles undergo contraction under the influence of

(a) ADH

(b) ACTH

(c) FSH

(d) PRL

A. ADH

B. ACTH

C. FSH

D. PRL

Answer: A



Watch Video Solution

419. What does not occur in exophthalmic goitre

- A. Protrusion of eyes
- B. Increased heart beat
- C. Nervousness
- D. Degeneration of sex organs.

Answer: D

 [Watch Video Solution](#)

420. Which of the following hormone is not involved in tyrosine metabolism

- A. Calcitonin

B. Melanin

C. Thyroxine

D. Epinephrine.

Answer: A



Watch Video Solution

421. Myxoedema occurs due to

A. Hypersecretion of thyroid hormone

B. Hyposecretion of thyroid hormone

C. Hypersecretion of parathormone

D. Hyposecretion of parathormone.

Answer: B



Watch Video Solution

422. Select the correct matching of a hormone, its source and function.

Hormone	Source	Function
(1) Vasopressin	Posterior Pituitary	Increases loss of water through urine
(2) Norepinephrine	Adrenal medulla	Increases heart beat, rate of respiration & alertness
(3) Glucagon	Beta-cells of Islets of Langerhans	Stimulates glycolysis
(4) Prolactin	Posterior Pituitary	Regulates growth of mammary glands and milk formation in females

Hormone Source Function

A. Vasopressin Posterior pituitary Increases loss of water through urine

B.

Hormone Source Function

Norepinephrine Adrenal medulla Increases heart beat respiration and alertness

C.

Hormone	Source	Function
Glucagon	β – cells of islet of Langerhans	Stimulates glycogenolysis

D.

Hormone	Source	Function
Prolactin	Posterior pituitary	Regulates growth of mammary glands and milk formation in females

Answer: B

 [Watch Video Solution](#)

423. Toxic agents present in food which interfere with thyroxine synthesis lead to the development of –

A. Cretinism

B. Simple goitre

C. Thyrotoxicosis

D. Toxic goitre.

Answer: B



Watch Video Solution

424. Injury to adrenal cortex is not likely to affect secretion of

A. Androstenedione and dehydroepiandrosterone

B. Adrenaline

C. Cortisol

D. Aldosterone.

Answer: B

 [Watch Video Solution](#)

425. Low Ca^{++} in the body fluid may be the cause of

A. Anaemia

B. Angina pectoris

C. Gout

D. Tetany.

Answer: D

 [Watch Video Solution](#)

426. Which one of the following pairs is incorrectly matched ?

- A. Somatostatin - Delta cells (Source)
- B. Corpus luteum- Relaxin (Secretion)
- C. Insulin- Diabetes mellitus (Disease)
- D. Glucagon- Beta cells (Source).

Answer: D



Watch Video Solution

427. Match the columns

	A		B
(i)	Posterior pituitary	(a)	Encourages the activity of osteoclasts
(ii)	Parathyroid	(b)	Encourages hydrolysis of stored food
(iii)	β -cells of pancreas	(c)	Encourages reabsorption of water by uriniferous tubules
(iv)	α -cells of pancreas	(d)	Encourages synthesis of lipid and proteins and thereby prevent their utilization of energy resources

A. i-d,ii-c,iii-a,iv-b

B. i-d, ii-a, iii-b, iv-c

C. i-c, ii-a, iii-d, iv-b

D. i-c, ii-d, iii-b, iv-a

Answer: C



[Watch Video Solution](#)

428. Volume of urine is regulated by

A. TSH

B. ACTH

C. FSH

D. ADH.

Answer: D



[Watch Video Solution](#)

429. A symptom of Graves' disease is

- A. Low temperature
- B. Low breathing rate
- C. Low heart rate
- D. High heart rate.

Answer: D



Watch Video Solution

430. Oedema is symptom of

- (a) Graves disease
- (b) Gillchrist disease
- (c) Gull's disease
- (d) Gingivitis

A. Graves disease

B. Gillchrist disease

C. Gull's disease

D. Gingivitis

Answer: C



Watch Video Solution

431. Infertility can occur in both the sexes due to deficiency of

A. Oxytocin

B. Prolactin

C. LH

D. FSH

Answer: D



Watch Video Solution

432. Enlargement of lower jaw occurs in

A. Acromegaly

B. Gigantism

C. Simmond's disease

D. Cushing disease

Answer: A



[Watch Video Solution](#)

433. Acidophils of pituitary secrete

A. STH and FSH

B. STH and PL

C. STH and TSH

D. STH and GTH

Answer: B



[Watch Video Solution](#)

434. Acromegaly causes

(a) Dwarfism

(b) Extra growth in height

(c) Extra growth in hands, feet and lower jaw

(d) Small hands, feet and face

A. Dwarfism

B. Extra growth in height

C. Extra growth in hands, feet and lower jaw

D. Small hands, feet and face

Answer: C



Watch Video Solution

435. Thymus gland is related to

A. $Na^+ K^+$ balance

B. Immune system

C. Glucose level

D. Ca^{2+} level

Answer: B

 [Watch Video Solution](#)

436. Which one of the following does not act as a neurotransmitter ?

A. Acetylcholine

B. GABA

C. Norepinephrine

D. Thyroxine.

Answer: D



Watch Video Solution

437. Swelling around eyes and large popping eye balls are observed in an individual who has

A. Less secretion of thyroxine in adult

B. Excessive secretion of thyroxine

C. Excessive secretion of calcitonin

D. Less secretion of thyroxine right from birth.

Answer: B

 [Watch Video Solution](#)

438. Name of hormone that has no role in menstruation.

A. LH

B. GH

C. FSH

D. TSH.

Answer: D

 [Watch Video Solution](#)

439. Hypokalemia is caused by deficiency of which mineral

A. Calcium

B. Sodium

C. Potassium

D. Phosphorus.

Answer: C



Watch Video Solution

440. Which one is not a placental hormone?

A. Progesterone

B. hCG

C. hPL

D. Melatonin.

Answer: D



Watch Video Solution

441. Which of the following hormones stimulates production of estrogen at puberty?

A. FSH and LH

B. ACTH

C. TSH

D. GH.

Answer: A



Watch Video Solution

442. Which among the following hormones is not secreted by adenohypophysis

A. FSH

B. ICSH

C. LH

D. hCG

Answer: D

443. Juvenile diabetes mellitus is due to

- (a) Loss of pancreatic beta cells
- (b) Resistance to insulin
- (c) Malnutrition
- (d) Obesity

A. Loss of pancreatic beta cells

B. Resistance to insulin

C. Malnutrition

D. Obesity

Answer: A

444. Select the correct match.

(a) Pineal gland - Does not influence menstrual cycle

(b) Corpus luteum- Secretes oxytocin

(c) Interstitial cells- Erythropoetin

(d) Cholecystokinin- Stimulates pancreatic enzyme secretion

A. Pineal gland - Does not influence menstrual cycle

B. Corpus luteum- Secretes oxytocin

C. Interstitial cells- Erthropoetin

D. Cholecystokinin- Stimulates pancreatic enzyme secretion.

Answer: D



Watch Video Solution

445. Match the columns and choose correct options.

Column I	Column II
(a) ANF	(p) Regulates blood calcium level
(b) MSH	(q) Decreases blood pressure
(c) GIP	(r) Pigmentation
(d) TCT	(s) Inhibits gastric secretion

(1) a-q, b-r, c-s, d-p

(2) a-s, b-p, c-q, d-r

(3) a-q, b-p, c-s, d-r

(4) a-s, b-p, c-r, d-q

A. a-q, b-r, c-s, d-p

B. a-s, b-p, c-q, d-r

C. a-q, b-p, c-s, d-r

D. a-s, b-p, c-r, d-q

Answer: A



Watch Video Solution

446. Thymosin hormone is secreted by

A. Thyroid

B. Thymus

C. Parathyroid

D. Hypothalamus.

Answer: B



Watch Video Solution

447. Somatostatin

- A. Stimulates glucagon release and inhibits insulin release
- B. Stimulates release of insulin and glucagon
- C. Inhibits release of insulin and glucagon
- D. Inhibits glucagon release and stimulates insulin release.

Answer: C



Watch Video Solution

448. Match the source gland with its respective hormone as well as the function

A. Corpus luteum - Estrogen - Supports pregnancy

B. Thyroid - Thyroxine - Regulates blood calcium level

C. Anterior pituitary - Oxytocin - Constriction of uterine muscles during child birth

D. Posterior pituitary - Vasopressin - Stimulates reabsorption of water in distal tubules.

Answer: D



Watch Video Solution

449. Identify blanks a, b and c

(i) a-Oestrogen-Maintenance of secondary sexual characters

(ii) α -cells of islets of Langerhans-b-Raises blood sugar level

(iii) Anterior pituitary-c-Oversecretion leads to gigantism

A. *a* *b* *c*
Ovary Insulin Calcitonin

B. *a* *b* *c*
Ovary Glucagon Growth hormone

C. *a* *b* *c*
Placenta Glucagen Calcitonin

D. *a* *b* *c*
Placenta Insulin Vasopressin

Answer: B



Watch Video Solution

450. A person entering an empty room suddenly finds a snake right in front on opening the door. Which one of the following is likely to happen in his neuro-hormonal control system ?

A. Sympathetic nervous system activated, releasing epinephrine and norepinephrine from adrenal medulla

B. Activation of sympathetic nervous system releasing epinephrine and norepinephrine from adrenal cortex

C. Neurotransmitters diffuse rapidly across synaptic cleft

D. Hypothalamus activates parasympathetic nervous system.

Answer: A



Watch Video Solution

451. What is correct ?

A. Secretion of thymosins increases with age

B. Glucagon secreted by β -cells of islets of Langerhans stimulates glycogenolysis

C. FSH binds with specific receptors over ovarian cell membrane

D. FSH stimulates secretion of estrogen and progesterone.

Answer: C



Watch Video Solution

452. Which one can pass easily through cell membrane of target cells and bind to internal receptors

- A. Thyroxine, insulin
- B. Somatostatin, Oxytocin
- C. Insulin, glucagon
- D. Cortisol, testosterone.

Answer: D



Watch Video Solution

453. Which is incorrect

- A. Glucagon is produced by pancreas
- B. Androgen is produced by ovary
- C. Thyroxine is secreted by thyroid
- D. Oxytocin is produced by pituitary.

Answer: B



Watch Video Solution

454. Which of the following is both (mixed) exo and endocrine gland

- A. Thyroid

B. Pituitary

C. Adrenal

D. Pancreas.

Answer: D



Watch Video Solution

455. Pituicytes are under the control of

A. Adenohypophysis

B. Neurohypophysis

C. Hypothalamus

D. Pineal.

Answer: C



Watch Video Solution

456. Somatostatin is produced by

- A. Adenohypophysis
- B. Neurohypophysis
- C. Pineal gland
- D. Basal part of diencephalon.

Answer: D



Watch Video Solution

457. Erythropoietin stimulates

- A. Osmoregulation
- B. Formation of RBC
- C. Reduces blood pressure
- D. GiP.

Answer: B



Watch Video Solution

458. Hypercalcemic hormone is

- A. Thyroxine
- B. Tri-iodo-thyronine

C. Parathormone

D. Thyrocalcitonin.

Answer: C



Watch Video Solution

459. Which hormone among these is not secreted by an endocrine gland

A. ADH

B. PTH

C. T_4

D. ANF

Answer: D



Watch Video Solution

460. Decreased levels of estrogen is a common cause of

A. Myasthenia gravis

B. Tetany

C. Osteoporosis

D. Gout

Answer: C



Watch Video Solution

461. Why is banana a monocarpic plant?



Watch Video Solution

462. Catecholamine normally induces

- A. Alertness
- B. Excessive urination
- C. Decreased heart beat
- D. Intense salivation.

Answer: A



Watch Video Solution

463. Hormone with no effect on beat is

- A. Oxytocin
- B. Adrenaline
- C. Noradrenaline
- D. Thyroxine.

Answer: A



Watch Video Solution

464. Cancer of parafollicular or C-cells of thyroid is

- A. Follicular cancer
- B. Medullary cancer

C. Papillary cancer

D. Anaplastic cancer.

Answer: B



Watch Video Solution

465. At the time of interview, heart beat increased due to

A. ADH secretion

B. Secretion of renin

C. Secretion of adrenaline

D. Adrenocorticotrophic hormone.

Answer: C



Watch Video Solution

466. Assertion . Iodine deficiency causes goitre

Reason. Reduced iodine intake decreases thyroxine production

- A. Point out if, both are true with reason being correct explanation
- B. both are true but reason is not correct explanation
- C. assertion is true but reason is wrong
- D. both are wrong

Answer: A



Watch Video Solution

467. Assertion. A male lacks facial and pubic hair

Reason. There is hyposecretion of testosterone from Leydig cells

- A. Point out if, both are true with reason being correct explanation
- B. both are true but reason is not correct explanation
- C. assertion is true but reason is wrong
- D. both are wrong

Answer: A

 [Watch Video Solution](#)

468. Assertion : Oxytocin is also known as Anti-diuretic hormone (ADH).

Reason : Oxygen can casue an increase in the renal reabsorption of water.

- A. Point out if, both are true with reason being correct explanation
- B. both are true but reason is not correct explanation
- C. assertion is true but reason is wrong
- D. both are wrong

Answer: D



Watch Video Solution

469. Cortisol is secreted by the adrenal cortex in response to stress. In addition to its function in a stress response, it functions in negative feedback by

- A. Inhibiting hypothalamus to secrete corticotropin releasing hormone or CRH
- B. Inhibiting anterior pituitary's ability to respond to CRH
- C. Both A and B
- D. None of the above

Answer: C



Watch Video Solution

470. Pineal gland is located

- A. On kidney
- B. In brain
- C. In pancreas
- D. Near thyroid.

Answer: B

 [Watch Video Solution](#)

471. Which increases the rate of Ca^{2+} absorption from gastrointestinal tract

- A. Calcitriol

B. Calcitonin

C. Aldosterone

D. Cholecystokinin.

Answer: A



Watch Video Solution

472. Identify hormones not antagonistic in function

A. MSH - Melatonin

B. Calcitonin- Parathormone

C. Adrenaline- Noradrenaline

D. Insulin- Glucagon.

Answer: C



Watch Video Solution

473. Select the answer which correctly matches the endocrine gland with the hormone it secretes and its function/deficiency symptom

A. Corpus luteum - testosterone - stimulates spermatogenesis

B. Anterior pituitary - oxytocin - stimulates uterus contraction during child birth

C. Posterior pituitary - growth hormone - oversecretion stimulates abnormal growth

D. Thyroid gland - thyroxine - lack of iodine in diet
results in goitre.

Answer: D



Watch Video Solution

474. A pregnant female delivers a baby who suffers from stunted growth, mental retardation, low intelligence quotient and abnormal skin.

This is the result of

- A. Oversecretion of pars distalis
- B. Deficiency of iodine in diet
- C. Low secretion of growth hormone

D. Cancer of thyroid gland

Answer: B

 [Watch Video Solution](#)

475. Which of the following statements is correct in relation to the endocrine system ?

A. Releasing and inhibitory hormones are produced by the pituitary gland

B. Adenohypophysis is under direct neural regulation of hypothalamus

C. Organs in the body like gastrointestinal tract, heart, kidney and liver do not produce any hormones

D. Nonnutrient chemicals produced by body in trace amounts that act as intercellular messengers are known as hormones.

Answer: D

 [Watch Video Solution](#)

476. Select the correct match of endocrine gland, its hormone and its function

A. Corpus luteum - estrogen -essential for maintenance of endometrium

B. Leydig cells - androgen - initiates production of sperms

C. Ovary - FSH - stimulates follicular development and secretion of estrogens

D. Pancreas - estrogen - initiates secretion of milk

Answer: B

 [Watch Video Solution](#)

477. Which of the following represents the action of insulin?

- A. Decreases blood glucose levels by forming glycogen
- B. Increases blood glucose level by promoting cellular uptake of glucose
- C. Increases blood glucose levels by hydrolysis of glycogen
- D. Increases blood glucose levels by stimulating glucagon production.

Answer: A

 [Watch Video Solution](#)

478. Which of the following is not a function of progesterone?

- A. Gestation
- B. Stimulation of mammary secretion
- C. Inhibition of ovulation
- D. Uterine growth and development

Answer: B

 [Watch Video Solution](#)

479. GnRH of hypothalamus stimulates secretion of

- A. Aldosterone from adrenals
- B. ADH from posterior pituitary
- C. FSH and LH from anterior pituitary

D. Thyroxine from thyroid.

Answer: C

 [Watch Video Solution](#)

480. Hormone which converts glucose to glycogen inside liver is produced in

- A. Thymus
- B. Pancreas
- C. Thyroid
- D. Adrenals

Answer: B

 [Watch Video Solution](#)

481. Name the chemical, deficiency of which causes Parkinson's disease while excess produces schizophrenia

- A. Dopamine
- B. Acetylcholine
- C. Endorphins
- D. Glycine.

Answer: A

 [Watch Video Solution](#)

482. Destruction of adrenal cortex results in disease is known as

- A. Cretinism
- B. Myxoedema
- C. Conn's disease
- D. Addison's disease

Answer: D



Watch Video Solution

483. Which is not the function of endocrine gland located in upper dorsal side of heart and aorta?

A. Plays important role in development of immune system

B. Induces differentiation of T-lymphocytes

C. Induces formation of RBCs

D. Induces development of T-lymphocytes.

Answer: C



Watch Video Solution

484. Name the gland which is located under corpus callosum

A. Adrenal gland

B. Pineal gland

C. Thyroid gland

D. Thymus gland

Answer: B

 [Watch Video Solution](#)

485. Match the columns and choose correct combination

I

- (a) FSH
- (b) GH
- (c) Prolactin
- (d) Oxytocin

II

- (p) Normal growth
- (q) Ovulation
- (r) Parturition
- (s) Water diuresis
- (t) Milk secretion

A. a-q, b-p, c-t, d-r

B. a-q, b-p,c-t,d-s

C. a-p,b-t, c-r, d-q

D. a-q,b-t,c-s,d-r

Answer: A

 [Watch Video Solution](#)

486. Which is correct for gland, hormone and its function

A. Anterior pituitary - oxytocin - contraction of uterine muscles

B. Anterior pituitary - vasopressin - induces reabsorption of water in nephron

C. Thymus - thymosin - proliferation of T-lymphocytes

D. α -cells - glucagon - uptake of glucose by cells.

Answer: C

 [Watch Video Solution](#)

487. Choose the wrong statement

- A. Somatostatin secreted by hypothalamus stimulates secretion of somatotrophic hormone
- B. Pars intermedia secretes melanocyte stimulating hormone
- C. In human, pars intermedia is almost merged with pars distalis.

D. Corpus luteum is formed from remnants of Graafian follicle after ovulation

Answer: A



Watch Video Solution

488. Which is not a function of thyroid hormone

A. Regulation of basal metabolic rate

B. Controls metabolism of carbohydrates, proteins and fats

C. Maintains water and electrolyte balance

D. Regulates the diurnal rhythm.

Answer: D



Watch Video Solution

489. Due to deficiency of which hormone, bones become weak in females

A. Progesterone

B. TSH

C. ACTH

D. Oestrogen.

Answer: D



Watch Video Solution

490. Part of adrenal cortex which secretes cortisol is

- A. Zona glomerulosa
- B. Zona reticularis
- C. Zona fasciculata
- D. Zona pellucida.

Answer: C

 [Watch Video Solution](#)

491. Human endocrine gland regulating body rhythms is

- A. Adrenal
- B. Pineal

C. Thymus

D. Thyroid.

Answer: B



Watch Video Solution

492. Which of the following hormones is a derivative of fatty acids

A. Gastrin

B. Thymosin

C. Estrogen

D. Prostaglandins.

Answer: D



Watch Video Solution

493. Which pituitary hormone is secreted without involvement of a releasing hormone

- A. TSH
- B. FSH
- C. Oxytocin
- D. Prolactin.

Answer: C



Watch Video Solution

494. Insulin causes rapid movement of glucose from blood to hepatocytes and adipocytes resulting in

(a) Hyperglycemia

(b) Hypoglycemia

(c) Diabetes

(d) None

A. Hyperglycemia

B. Hypoglycemia

C. Diabetes

D. None.

Answer: B



Watch Video Solution

495. Erythropoietin is produced by

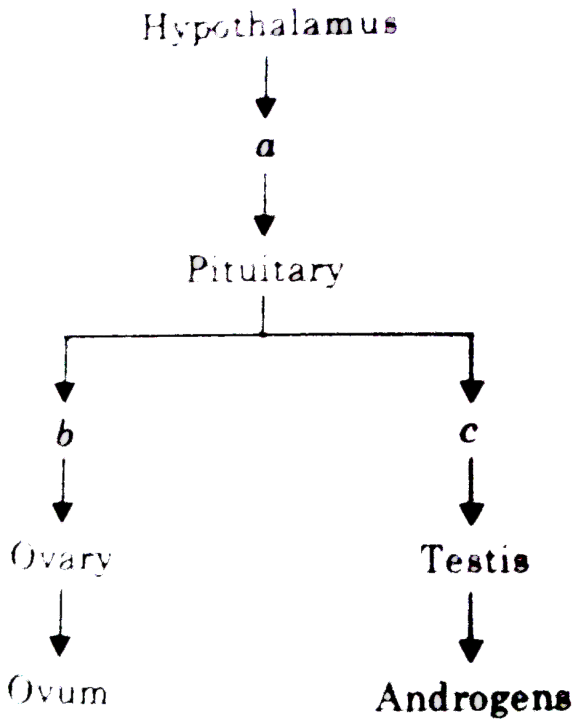
- A. Thymus
- B. Pituitary
- C. Heart
- D. Kidney

Answer: D



Watch Video Solution

496. Identify the hormones a, b and c that are labelled in the given flow chart



- A. (1) a- Gn RH, b- ICSH, c-FSH
- B. (2) a-GH, b-FSH, c-LH
- C. (3) a-Gn RH, b-PRL, c-ICSH
- D. (4) a-Gn RH, b-FSH, c-LH

Answer: D



Watch Video Solution

497. Which one of the following hormones also produces: anti-inflammatory reactions in man and suppresses the immune response in addition to its primary functions?

- (a) Cortisol
- (b) Thymosin
- (c) Thyrocalcitonin
- (d) Erythropoietin

- A. Cortisol
- B. Thymosin
- C. Thyrocalcitonin
- D. Erythropoietin.

Answer: A



Watch Video Solution

498. Which one has the correct match.

- (i) Corpus luteum - progesterone - degeneration of endometrium
- (ii) Pineal gland - vasopressin - intracellular transport
- (iii) Pars nervosa - coherin - induces contraction of jejunum

A. I only

B. I and ii

C. iii only

D. ii and iii.

Answer: C



Watch Video Solution

499. Which of the following is wrong

- A. Sella turcica is a bony cavity where pituitary gland is located
- B. Parathyroid hormone decreases the Ca^{2+} levels in blood
- C. Thymosins play a major role in T-cell differentiation
- D. The middle layer of adrenal cortex is zona fasciculata

Answer: B





500. Match the columns and choose the correct option

- | | |
|----------------------|------------------------------------|
| (i) Hypothalamus | (a) Melanocyte stimulating hormone |
| (ii) Pars intermedia | (b) Aldosterone |
| (iii) Pineal gland | (c) Gonadotropin releasing hormone |
| (iv) Adrenal medulla | (d) Melatonin |
| (v) Adrenal cortex | (e) Catecholamines |

- A. i-e,ii-a,iii-d,iv-b,v-c
- B. i-e, ii-d,iii-a,iv-b,v-c
- C. a-b,ii-d,iii-a, iv-c,v-e
- D. i-c,ii-a,iii-d,iv-e,v-b

Answer: D



Watch Video Solution

501. Identify the hormone with its correct matching of source and function

A. Melatonin- pineal gland, regulates the normal rhythm of sleep wake cycle

B. Progesterone - corpus luteum, stimulates growth and activities of female secondary sex organs

C. Atrial natriuretic factor- ventricular wall, increases blood pressure

D. Oxytocin - posterior pituitary, growth and maintenance of mammary glands.

Answer: A



Watch Video Solution

502. Fight-or-flight reactions cause activation of

- A. The kidneys, leading to suppression of renin - angiotensin -aldosterone pathway
- B. The adrenal medulla, leading to increased secretion of epinephrine and norepinephrine
- C. The pancreas leading to a reduction in the blood sugar levels
- D. The parathyroid glands, leading to increased metabolic rate.

Answer: B



Watch Video Solution

503. Select the correct statement

- A. Parathyroid hormone increases K^+ absorption of the body
- B. Insulin and glucagon help to maintain blood sugar levels
- C. Old people have weak immunity due to increased activity of thymus
- D. Osteoporosis in women occurs due to increased levels of oestrogen.

Answer: B



Watch Video Solution

504. Which one of the following pairs of hormones are the examples of those that can easily pass through the cell membrane of the target cell and bind to a receptor inside it (mostly in the nucleus)

- A. Insulin, glucagon, epinephrine and parathormone
- B. Thyroxine, insulin
- C. Somatostatin, oxytocin
- D. Cortisol, testosterone.

Answer: D



Watch Video Solution

505. Assertion : Adrenocorticotropin - releasing hormone excites the anterior pituitary to produce adrenocorticotropin hormone (ACTH)

Reason : ACTH stimulates the adrenal cortex to secrete its glucacorticoid and mineralocorticoid hormones.

- A. Point out if, both are true with reason being correct explanation
- B. both are true but reason is not correct explanation
- C. assertion is true but reason is wrong
- D. both are wrong

Answer: B



Watch Video Solution

506. Assertion : ADH and RAAS work in response to low blood volume and blood pressure

Reason : ANF works in response to high blood volume and blood pressure.

- (a) both are true with reason being correct explanation
- (b) both are true but reason is not correct explanation
- (c) assertion is true but reason is wrong
- (d) both are wrong

A. Point out if, both are true with reason being correct explanation

B. both are true but reason is not correct explanation

C. assertion is true but reason is wrong

D. both are wrong

Answer: B



[Watch Video Solution](#)

507. Gonadotropin releasing hormone is transferred to anterior pituitary by

A. Left coronary artery

B. Hypophyseal portal artery

C. Axons of neurosecretory cells

D. Nuclei of hypothalamus.

Answer: B

 [Watch Video Solution](#)

508. When kidney of a person is damaged, the patient suffers from anaemia because

- A. RBCs pass through the glomerulus
- B. Sufficient erythropoietin is not produced
- C. Haemoglobin is not synthesised efficiently
- D. Iron and B_{12} vitamin are not able to bind to haemoglobin.

Answer: B

 [Watch Video Solution](#)

509. Which of the following hormones is not a steroid ?

A. Testosterone

B. Progesterone

C. Corticosterone

D. Adrenocorticotrophic hormone.

Answer: D

 [Watch Video Solution](#)

510. Tetraidothyronine is

A. T_3

B. Thyroxine

C. TSH

D. TRH.

Answer: B



Watch Video Solution

511. Secretion of which hormone is not pituitary dependent

A. Triiodothyronine

B. Testosterone

C. Glucocorticoids

D. Parathyroid hormone.

Answer: D



Watch Video Solution

512. Which hormones are produced in women only during pregnancy?

A. Estrogen, human chorionic gonadotrophin, human placental lactogen

B. Estrogen, progesterone, oxytocin

C. Human placental lactogen, human chorionic gonadotropin, relaxin

D. Human placental lactogen, human chorionic gonadotropin, thyroxine.

Answer: C

 [Watch Video Solution](#)

513. With respect to its body mass which of the following will have highest metabolic rate

A. Rat

B. Rabbit

C. Horse

D. Elephant.

Answer: A



Watch Video Solution

514. Melatonin is produced by

A. Pineal gland

B. Adrenal gland

C. Parathyroid gland

D. Ovary.

Answer: A



[Watch Video Solution](#)

515. Which one of the following is called intraspecific chemical messenger

- A. Pheromones
- B. Prostaglandins
- C. Corticotrophin
- D. Catecholamines.

Answer: A



[Watch Video Solution](#)

516. Glucagon hormone is secreted by

- A. Beta cells of islets of Langerhans
- B. Alpha cells of islets of Langerhans
- C. Acidophilic cells of adenohiphophysis
- D. Basophilic cells of adenohiphophysis.

Answer: B



Watch Video Solution

517. Which enzyme is responsible for conversion of norepinephrine to epinephrine?

(a) Catecholamine-O-methyl transferase

(b) Phenylalanine-N-methyl transferase

(c) DOPA carboxylase

(d) Monoamine oxidase

A. Catecholamine-O-methyl transferase

B. Phenylalanine-N-methyl transferase

C. DOPA carboxylase

D. Monoamine oxidase.

Answer: B



Watch Video Solution

518. Steroid hormones

A. Work via second messenger

- B. Trigger rapid, short term response in cells
- C. Alter the activity of genes
- D. Initiate open channels in plasma membrane.

Answer: C

 [Watch Video Solution](#)

519. Ecotopically transplanted pituitary secretes following hormone abundantly

- A. Oxytocin
- B. Vasopressin
- C. Prolactin

D. Inhibin.

Answer: C



Watch Video Solution

520. Which hormone stimulates the secretion of milk during sucking of milk by baby

Or

Which hormone is responsible for milk ejection after an birth of the baby

A. Oxytocin

B. Relaxin

C. Prolactin

D. Progesterone.

Answer: A



Watch Video Solution

521. Pick up the correct match in relation to glands and diseases associated with them

- | | |
|-----------------------|----------------------|
| (a) Addison's disease | (i) Pituitary |
| (b) Tetany | (ii) Thyroid |
| (c) Acromegaly | (iii) Adrenal cortex |
| (d) Myxoedema | (iv) Parathyroid |

A. a-iii, b-iv, c-i, d-ii

B. a-i, b-iii, c-ii, d-iv

C. a-iii, b-iv, c-ii, d-i

D. a-iii, b-ii, c-I, d-iv

Answer: A



Watch Video Solution

522. Find out the correct layers in T.S. adrenal gland

A. Modulla- Zona reticularis - Zona fasciculata - Zona glomerulosa

B. Zona glomerulosa - Medulla- Zona reticularis - Zona fasciculata

C. Zona glomerulosa - Zona fasciculata - Zona reticularis - Medulla

D. Zona reticularis - Zona fasciculata - Zona glomerulosa

- Medulla.

Answer: C



Watch Video Solution

523. Pars distalis region of pituitary does not produce these enzymes

I. Melanocyte stimulating hormone

II. Vasopressin

III. Prolactin

IV. Growth hormone

A. III only

B. I and IV only

C. II and IV only

D. I and II only

Answer: D



Watch Video Solution

524. Somatostatin

A. Stimulate pituitary synthesis and release
gonadotropins

B. Inhibit the release of gonadotropins from pituitary

C. Stimulate pituitary and promotes secretion of growth hormone

D. Inhibit the release of growth hormone from pituitary

Answer: C



Watch Video Solution

525.shows anti-allergic and anti-inflammatory effect.

A. Mineralocorticoids

B. Sex corticoids

C. Glucocorticoids

D. Noradrenaline.

Answer: C



Watch Video Solution

526. which is the inhibitory hormone of GH

- A. Insulin
- B. Somatostatin
- C. Parathormone
- D. Testosterone.

Answer: B



Watch Video Solution

527. Which one of the following hormones is not involved in sugar metabolism

A. Cortisone

B. Aldosterone

C. Insulin

D. Glucagon.

Answer: B

 [Watch Video Solution](#)

528. Which one of the following hormones though synthesised elsewhere is stored and released by the master gland ?

- A. Antidiuretic hormone
- B. Luteinising hormone
- C. Prolactin
- D. Melanocyte stimulating hormone.

Answer: A

 [Watch Video Solution](#)

529. Serotonin and Melatonin are hormones, secreted by

- A. Pancreas
- B. Pineal body
- C. Pituitary gland

D. Thymus.

Answer: B



Watch Video Solution

530. Which of the following integrates Nervous and endocrine system

A. Thalamus

B. Hypothalamus

C. Epithalamus

D. Colliculus.

Answer: B

531. Consider the following four statements (i-iv) and select the option that correctly identifies the true (T) and false (F) ones.

(i). Atrial natriuretic factor can cause vasodilation (dilation of blood vessels) and thereby decreases the blood pressure.

(ii). On an average, 60-70 gm of urea is excreted out per day.

(iii). Sebaceous glands eliminate certain substances like NaCl, urea and lactic acid through sebum.

(iv). PCT is lined by simple cuboidal brush border epithelium which increases the surface area for reabsorption.

- A. Blood pressure
- B. Secretion of renin
- C. Na^+ secretion
- D. Vasodilation.

Answer: A

 [Watch Video Solution](#)

532. Select the mismatched pair from the following.

- A. Glucagon- glycogenolysis
- B. Prolactin - milk production
- C. Insulin - Gluconeogenesis

D. Oxytocin- Contraction of uterine muscles.

Answer: C

 [Watch Video Solution](#)

533. Assertion (A). Hormones interacting with cell surface receptors do not enter the target but they generate second messenger

Reason (R). Glucocorticoids bind to intracellular receptors and regulate gene expression

A. Both A and R are true and R is correct explanation of

A

- B. Both A and R are true but R is not correct explanation of A
- C. A is true but R is false
- D. A is false and R is true.

Answer: B



Watch Video Solution

534. Match and find the correct combination

- | | |
|-----------------------|--|
| (a) Addison's disease | (i) Hypothyroidism in adult |
| (b) Cushing syndrome | (ii) Hypersecretion of somatotropin in adult |
| (c) Cretinism | (iii) Hyposecretion of glucocorticoids |
| (d) Myxoedema | (iv) Hypothyroidism during pregnancy |
| (e) Acromegaly | (v) Overproduction of glucocorticoids |

A. a-iii, b-v, c-iv, d-I, e-ii

B. a-v, b-iv, c-iii, d-ii, e-i

C. a-ii, b-iii, c-iv, d-I, e-v

D. a-iii, b-iv, c-v, d-I, e-ii

Answer: A



Watch Video Solution

535. How many endocrine glands are located in human brain

A. 3

B. 4

C. 2

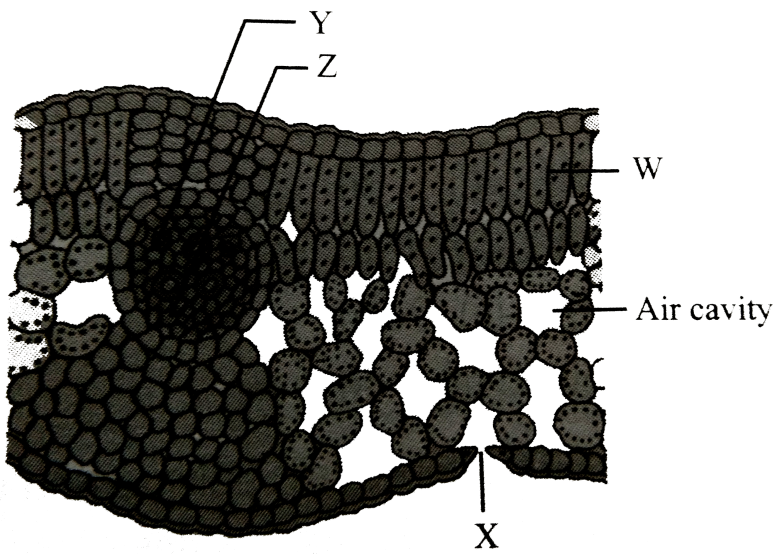
D. 9

Answer: A



[Watch Video Solution](#)

536. Which of the following is correct regarding the given figure ?



- A. Regulate carbohydrate, protein and fat metabolism
- B. Development of female sexual characters
- C. Antiallergic and anti-inflammatory effects.
- D.

Answer: B

[Watch Video Solution](#)

537. If in a child, secretion from anterior lobe of pituitary gland is more than normal, the child will be suffering from

- A. Night blindness
- B. Maturing late
- C. Gigantic due to speedy growth
- D. Dull mentally and weak.

Answer: C

 [Watch Video Solution](#)

538. The isthmus which connects right and left lobes of thyroid gland is located from ____ tracheal cartilages

- A. 1st to 3rd
- B. 2nd to 4th
- C. 5th to 7th
- D. 6th to 8th.

Answer: B

 [Watch Video Solution](#)

539. ADH carries out following functions except

- A. Increases blood pressure
- B. Increases glomerular filtrate rate
- C. Increases permeability for water in DCT

D. Increase Na^+ excretion.

Answer: D



Watch Video Solution

540. A pair of hormones produced by kidneys is

- A. Erythropoietin and relaxin
- B. Erythropoietin and calcitriol
- C. Calcitonin and relaxin
- D. Calcitonin and calcitriol.

Answer: B



Watch Video Solution

541. Which of the following is considered as hypoglycemic factor

- A. Insulin
- B. Glucagon
- C. Aldosterone
- D. Parathormone.

Answer: B



Watch Video Solution

542. The hormone which regulates the gene-expression of the target cell is

A. Prolactin

B. Oxytocin

C. Thyroxine

D. Growth hormone.

Answer: C



Watch Video Solution

543. This hormone is a catecholamine

A. Oxytocin

B. Adrenaline

C. Vasopressin

D. Prolactin.

Answer: B



Watch Video Solution

544. Match and find the correct option.

- | | |
|--------------------------------------|--------------------------------|
| (a) Hyperthyroidism | (i) Myxedema |
| (b) Hyposecretion of glucocorticoids | (ii) Addison's disease |
| (c) Hypothyroidism | (iii) Increased metabolic rate |
| (d) Hyperparathyroidism | (iv) Cushing's syndrome |
| | (v) Kidney stones |

A. a-iii, b-ii, c-I, d-v

B. a-iii, b-iv, c-I, d-ii

C. a-I, b-iv, c-iii, d-ii

D. a-I, b-ii, c-iii, d-v

Answer: A



Watch Video Solution

545. You are watching a horror movie and you notice that your heart is beating fast and mouth is dry. It is because of

A. Fight and flight response

B. Autonomic nervous response

C. Sympathetic nervous system

D. Both A and C

Answer: D



Watch Video Solution

546. Conversion of glucose 6-P requires ATP. Yet critically ill patients are given glucose solution intravenously instead of glucose 6-P. The reason for not giving glucose 6-P directly is

- A. Glucose 6-P is degraded very fast in the blood before it enters the cells
- B. Commercial preparation of glucose 6-P is always contaminated with toxic chemicals
- C. High cost of glucose 6-P

D. Cells cannot take up glucose 6-P.

Answer: D



Watch Video Solution

547. Match the lists and find the correct option

I

II

- | | |
|--|------------------|
| (a) Sleep-wake cycle | (i) Cortisol |
| (b) Induce smooth muscles of uterus during child birth | (ii) Aldosterone |
| (c) Stimulate process of erythropoiesis | (iii) Melatonin |
| (d) Regulate balance of water and electrolytes in the body | (iv) Oxytocin |
| (e) Anti-inflammatory reactions | (v) Thyroxine |

A. a-ii,b-iii, c-v,d-iv, e-i

B. a-iii, b-ii, c-v, d-iv, e-i

C. a-iii, b-iv, c-v, d-ii, e-i

D. a-v,b-iv, c-iii, d-ii, e-i

Answer: C



Watch Video Solution

548. The hormone reduces cellular glucose uptake and utilisation

A. Glucagon

B. Insulin

C. Aldosterone

D. Thymosin

Answer: A



Watch Video Solution

549. In response of increased returns of venous blood in heart, which hormone secretion begins and from which organ

A. ADH from kidney

B. ANF from heart

C. Epinephrine from adrenal medulla

D. Noradrenaline from adrenal medulla.

Answer: B



Watch Video Solution

550. Disease caused by hypoactivity of anterior pituitary gland is

- A. Dwarfism
- B. Gigantism
- C. Acromegaly
- D. Cushing disease

Answer: A



Watch Video Solution

551. Calcitonin

- A. Elevates potassium level in blood
- B. Lowers calcium level in blood
- C. Elevates calcium level in blood
- D. No effect on calcium.

Answer: B



Watch Video Solution

552. Oxytocin is synthesised in

- A. Adenohypophysis
- B. Neurohypophysis

C. Hypothalamus

D. Epiphysis.

Answer: C



Watch Video Solution

553. The adrenal cortex synthesis only

A. Steroid hormones

B. Peptide hormones

C. Glycopetide hormones

D. Catecholamines.

Answer: A



[Watch Video Solution](#)

554. Which of the following hormones is not chemically glycoprotein

- A. Growth hormone
- B. Prolactin
- C. Luteinising hormone
- D. Estrogen.

Answer: D



[Watch Video Solution](#)

555. Which of the following pairs of hormones are not antagonistic (having opposite effects) to each other

A. Relaxin- Inhibin

B. Parathormone-Calcitonin

C. Insulin-Glucagon

D. Aldosterone-Atrial natriuretic factor.

Answer: A



Watch Video Solution

556. The amino acid Tryptophan is the precursor for the synthesis of

- A. Cortisol and cortisone
- B. Melatonin and serotonin
- C. Thyroxine and triiodothyronine
- D. Estrogen and progesterone.

Answer: B

 [Watch Video Solution](#)

557. Name a peptide hormone which acts mainly on hepatocytes, adipocytes and enhances cellular glucose uptake and utilization.

- A. Gastrin
- B. Insulin

C. Glucagon

D. Secretin.

Answer: B



Watch Video Solution

558. Osteoporosis, an age-related disease of skeletal system, may occur due to

A. Accumulation of uric acid leading to inflammation of joints

B. Immune disorder affecting neuromuscular junction leading to fatigue

C. High concentration of Ca^{2+} and Na^{+}

D. Decreased level of oestrogen.

Answer: D



Watch Video Solution

559. The posterior pituitary gland is not a 'true' endocrine gland because

A. It secretes enzymes

B. It is provided with a duct

C. It only stores and releases hormones

D. It is under regulation of hypothalamus.

Answer: C

 [Watch Video Solution](#)

560. Several hormones like hCG, hPL, estrogen, progesterone are produced by

- A. Pituitary
- B. Ovary
- C. Placenta
- D. Fallopian tube.

Answer: C

 [Watch Video Solution](#)

561. Which of the following represents the action of insulin?

- A. Increase blood glucose level by stimulating glucagon
- B. Decreases blood glucose level by forming glycogen
- C. Increases blood glucose level by promoting cellular uptake of glucose
- D. Increase blood glucose level by hydrolysis of glycogen.

Answer: B



Watch Video Solution

562. Hypersecretion of Growth Hormone in adults does not cause further increase in height because

- A. Growth hormone becomes inactive in adults
- B. Epiphyseal plates close after adolescence
- C. Bones lose their sensitivity for growth hormone in adults
- D. Muscle fibres do not grow in size after birth

Answer: B

 [Watch Video Solution](#)

563. A temporary endocrine gland is

- A. Pineal gland
- B. Corpus cardiacum
- C. Corpus luteum
- D. Corpus allatum.

Answer: C

 [Watch Video Solution](#)

564. GnRH, a hypothalamic hormone, needed in reproduction, acts on

- A. Anterior pituitary gland and stimulates secretion of LH and oxytocin

- B. Anterior pituitary gland and stimulates secretion of LH and FSH
- C. Posterior pituitary gland and stimulates secretion of oxytocin and FSH
- D. Posterior pituitary gland and stimulates secretion of LH and relaxin.

Answer: B

 [Watch Video Solution](#)

Check Your Grasp

1. α -cells of adenohypophysis secrete

A. TSH and FSH

B. GH and LTH

C. FSH and LH

D. ACTH and LH

Answer: B



Watch Video Solution

2. The term 'birth hormone' is associated with

A. Oxytocin

B. Relaxin

C. Progesterone

D. hCG

Answer: A

 [Watch Video Solution](#)

3. Second messenger is

A. Releasing hormone

B. Tropic hormone

C. Hormone

D. cAMP

Answer: D

 [Watch Video Solution](#)

4. Skin pigmentation caused by pregnancy is related to

A. Hypersecretion of MSH

B. Hyposecretion of MSH

C. hCG

D. Progesterone.

Answer:



Watch Video Solution

5. Father of endocrinology is

A. Berthold

B. Bernard

C. Addison

D. Kendall.

Answer:



Watch Video Solution

6. Who studied the effect of thyroxine on metamorphosis

A. Kendall

B. Starling

C. Gudernatsch

D. Huxley.

Answer:

 [Watch Video Solution](#)

7. Sanger is known in endocrinology for his work on

- A. Purification of thyroxine
- B. Isolation of insulin
- C. Isolation of glucagon
- D. Insulin structure.

Answer:

 [Watch Video Solution](#)

8. The largest endocrine gland in human is

A. Pituitary

B. Thyroid

C. Adrenal

D. Pancreas

Answer:



Watch Video Solution

9. Which one of the following is temporary endocrine gland

A. Placenta

B. Thymus

C. Stomach

D. Adrenal.

Answer:



Watch Video Solution

10. Gravindex test for pregnancy involves the check of

A. hCG

B. Relaxin

C. Androgen

D. Estradiol.

Answer:



[Watch Video Solution](#)

Brain Teasers V

1. There is increase in number of RBCs at higher altitudes to compensate for

- A. High rate of destruction
- B. Lower turn-over
- C. Low level of oxygen
- D. Higher requirement of energy.

Answer: C



[Watch Video Solution](#)

2. Total length of blood vessels in human body is

A. 9.6 km

B. 96.5 km

C. 9600 km

D. 96000 km.

Answer: D



[Watch Video Solution](#)

3. For one complete circuit in the body, a blood cell takes

A. 60 seconds

B. 6 minutes

C. 60 minutes

D. 6 hours.

Answer: A



Watch Video Solution

4. About 400 million haemoglobin molecules are destroyed in our body every

A. Minute

B. Second

C. Hour

D. Day

Answer: B



Watch Video Solution

5. Number of haemoglobin molecules present in an average human body is

- A. 6000 million million
- B. 6000 million million million
- C. 6 million million million
- D. 600 million million million

Answer: B



Watch Video Solution

6. Which organ is part of circulatory system but does not take part in pumping ?

A. Heart

B. Liver

C. Spleen

D. Kidney

Answer: C



Watch Video Solution

7. Spleen stores

- A. RBCs
- B. Lymphocytes
- C. Iron
- D. All the above.

Answer: D



Watch Video Solution

8. Amount of blood which can be stored in spleen is

- A. 200 ml
- B. 100 ml

C. 50 ml

D. None of the above

Answer: A



Watch Video Solution

9. Foramen ovale

A. Partition between inner and middle ear

B. Inter-auricular septum

C. Inter-ventricular septum

D. Aortic and pulmonary arches.

Answer: B



Watch Video Solution

10. Foetal passage between aortic and pulmonary arches is

- (a) Foramen rotundum
- (b) Foramen caecum
- (c) Ductus arteriosus
- (d) Ligamentum arteriosum

- A. Foramen rotundum
- B. Foramen caecum
- C. Ductus arteriosus
- D. Ligamentum arteriosum.

Answer: C



Watch Video Solution

11. Number of great vessels is

A. 4

B. 6

C. 7

D. 8

Answer: D



Watch Video Solution

12. Pharyngeal tonsils are

A. Near surface of tongue

B. At the back of throat

C. Active throughout life

D. Adenoids.

Answer: D



Watch Video Solution

13. Adenoids are functional upto age of

A. Four years

B. Ten years

C. Adolescence

D. 20 years.

Answer: B

 [Watch Video Solution](#)

14. Tonsils and adenoids are

- A. Lymph nodes
- B. Connective tissue with blood supply
- C. Endocrine glands
- D. Small organs specialised to produce endorphins.

Answer: A

 [Watch Video Solution](#)

15. Lymphatic system is

- A. Devoid of heart
- B. Provided with heart in some amphibians
- C. With small hearts in reptiles
- D. Both B and C.

Answer: B



Watch Video Solution

16. Lymph nodes possess

- A. Extra lymph

B. Lymphocytes

C. Macrophages

D. All the above.

Answer: D



Watch Video Solution

17. Lymphokines are

A. Chemical messengers from lymphocytes

B. Antibodies

C. Antigens

D. Meshes of lymph node.

Answer: A



Watch Video Solution

18. A lymphokine involved in defensive reaction against viruses is

- A. Interleukin
- B. Endorphin
- C. Interferon
- D. Both B and C.

Answer: C



Watch Video Solution

19. Macrophages are

- A. Short lived
- B. With life span longer than most leucocytes
- C. Lymphocytes
- D. A type of neutrophils.

Answer: B

 [Watch Video Solution](#)

20. Which one is devoid of macrophages ?

- A. Lymph nodes
- B. Connective tissue

C. Lungs

D. None of the above

Answer: D



Watch Video Solution

21. In lungs macrophages help in removal of

A. Microorganisms

B. Dust and fibres

C. Cell debris

D. All the above.

Answer: D



[Watch Video Solution](#)

22. Properdin is

- A. Neurohormone for stimulating body activities
- B. Plasma protein that destroys foreign RBCs
- C. Plasma protein involved in defence against certain bacteria and viruses
- D. Both B and C.

Answer: D



[Watch Video Solution](#)

23. Erythropoietin is secreted from

A. Bone marrow

B. Spleen

C. Kidneys

D. Liver.

Answer: C



Watch Video Solution

24. Erythropoietin is a

A. Lipid

B. Mucopolysaccharide

C. Glycoprotein

D. Nucleoprotein.

Answer: C



Watch Video Solution

25. Sinusoids are characterised by

A. Irregular lumen

B. Absence of endothelium

C. Mixing of blood and lymph

D. Both B and C.

Answer: A



Watch Video Solution

26. Intercrescencce of endothelium and endodermis occurs in

- A. Sinuses
- B. Rete mirabile
- C. Great blood vessels
- D. Corpus luteum.

Answer: A



Watch Video Solution

27. Phagocytic endothelial cells are

- A. Monocytes
- B. Kupffer's cells
- C. Lymphocytes
- D. Plasma cells.

Answer: B



Watch Video Solution

28. Kupffer's cells are

- A. Stellate cells
- B. Star cells

C. Phagocytic cells

D. All the above.

Answer: D



Watch Video Solution

29. Rete mirabile is found in

A. Cartilaginous fishes

B. Bony fishes

C. Aquatic mammals

D. Both B and C.

Answer: D



[Watch Video Solution](#)

30. Rete mirabile is

- A. Network of fine blood vessels
- B. Branches of arteries reforming arteries
- C. Store house of oxygen
- D. All the above.

Answer: D



[Watch Video Solution](#)

31. Pseudo-unipolar neurons are

A. Without any dendron

B. Without any axon

C. Actually bipolar

D. Actually nonpolar with an edge of cyton prolonged.

Answer: C



Watch Video Solution

32. Pseudounipolar neurons are present in :

A. Retina

B. Dorsal ganglion

C. Ventral root of spinal nerve

D. Nerve nuclei.

Answer: B

 [Watch Video Solution](#)

33. Myelin of the nerve fibres of the central nervous system is produced and maintained by

A. Axon

B. Connective tissue

C. Schwann cells

D. Neuroglia.

Answer: C

 [Watch Video Solution](#)

34. Myelin sheath consists of

A. A layer of cells

B. Fat

C. Protein

D. Alternate fat and protein layers.

Answer: D

 [Watch Video Solution](#)

35. Myelin sheath has layers of fat and protein

A. Upto 100

B. 43758

C. Two each

D. One each.

Answer: A



Watch Video Solution

36. A characteristic of ganglia is

A. Hollow cluster of nervous tissue

B. Nervous tissue devoid of tissue sheath

- C. Solid cluster of nervous tissue surrounded by tissue sheath
- D. Found inside the central nervous system.

Answer: C

 [Watch Video Solution](#)

37. Nuclei of nervous tissue are found in

- A. Visceral organs
- B. Outside the visceral organs
- C. Inside central nervous system
- D. White matter of nervous system.

Answer: C



Watch Video Solution

38. A flattened sheet connecting muscle with an organ or bone is

- A. Aponeurosis
- B. Ligament
- C. Epineurium
- D. Epimusium.

Answer: A



Watch Video Solution

39. Achilles tendon connects

- A. Calf muscles to heel
- B. Thigh muscles to knee
- C. Muscles of buttocks to pelvic girdle
- D. Biceps muscles to shoulder girdle.

Answer: A



Watch Video Solution

40. Colour of melanin in human skin is

- A. Black
- B. Brown

C. Dark brown

D. Yellow.

Answer: B



Watch Video Solution

41. Melanin pigment of human skin is produced by

A. Mast cells of corium

B. Melanocytes of corium and incorporated there

C. Melanocytes of corium and incorporated in epidermis

D. Melanocytes of epidermis.

Answer: C



[Watch Video Solution](#)

42. Concentration of skin melanin is controlled by

- A. Heredity
- B. Environment
- C. Both heredity and environment
- D. Food.

Answer: C



[Watch Video Solution](#)

43. Melanin present in the skin is useful in

- A. Prevention of overheating
- B. Reflecting solar radiations
- C. Protection form ultra-violet radiations
- D. All the above.

Answer: C

 [Watch Video Solution](#)

44. Keratohyalin is transparent substance present in

- A. Corium
- B. Stratum corneum
- C. Stratum lucidum

D. Stratum granulosum.

Answer: D

 [Watch Video Solution](#)

45. Eleidin occurs in

A. Stratum germinativum

B. Stratum spinosum

C. Stratum granulosum

D. Stratum lucidum.

Answer: D

 [Watch Video Solution](#)

46. Callus or skin callosity develops in response to

- A. Pressure
- B. Irritation
- C. Injury
- D. All the above.

Answer: A



Watch Video Solution

47. Acne develop in response to

- A. Fungal infection

B. Viral infectin

C. Overactivity of sebaceous glands

D. Overactivity of sudoriferous glands.

Answer: C



Watch Video Solution

48. Amount of water present inside human body cells is about

A. 15 litres

B. 5 litres

C. 25 litres

D. 10 litres.

Answer: C

 [Watch Video Solution](#)

49. Water present in human tissue fluid is

A. 4 litres

B. 12 litres

C. 2 litres

D. 3 litres.

Answer: B

 [Watch Video Solution](#)

50. Daily loss of water through breathing, perspiration and excretion is

A. 1.5 litres

B. 3 litres

C. 5 litres

D. 7.5 litres.

Answer: B



[Watch Video Solution](#)

51. Hallucinations begin to appear with a water loss of

A. 1.5 litres

B. 3.0 litres

C. 4.0 litres

D. 6.0 litres

Answer: C



Watch Video Solution

52. Eye teeth are

A. Upper incisors

B. Lower incisors

C. Lower canines

D. Upper canines.

Answer: D

 [Watch Video Solution](#)

53. Commonest defect in teeth is

- A. Misplacements
- B. Apperance of wisdom teeth
- C. Nonappearance of wisdom teeth
- D. Mottling.

Answer: A

 [Watch Video Solution](#)

54. Commonest disease of teeth is

A. Mottling

B. Caries

C. Dissolution of enamel

D. Pyorrhoea.

Answer: B



Watch Video Solution

55. Length of human alimentary canal is

A. 100 cm

B. 3-4 m

C. 4-6 m

D. 6-9 m.

Answer: D



Watch Video Solution

56. Mammalian palate is

A. Primary structure

B. Parallel to original roof of mouth cavity

C. Secondary structure

D. Both B and C.

Answer: D



Watch Video Solution

57. Cloaca is a small, median chamber that is used to pass

- A. Common aperture for digestive and urinary systems
- B. Common aperture for digestive, urinary and reproductive systems
- C. Common chamber in which reproductive, urinary and digestive tracts open
- D. Common chamber for digestive and urinary tracts.

Answer: C





[Watch Video Solution](#)

58. Cloaca is

- A. Absent in mammals
- B. Found in prototheria
- C. Present in all fishes
- D. Both B and C.

Answer: B



[Watch Video Solution](#)

59. Alexis St. Martin is famous for

- A. His views on evolution
- B. Work on animal breeding
- C. Open stomach for experiments on digestion
- D. Being first person to study digestion.

Answer: C

 [Watch Video Solution](#)

60. The scientist to study digestion for the first time was

- A. Beaumont
- B. Pavlov
- C. Guillemin

D. Sach.

Answer: A



Watch Video Solution

61. The scientist who found secretion of gastric juice to be under control of nervous system was

A. Pavlov

B. Reamur

C. Spallanzani

D. Ernest Starling

Answer: A



[Watch Video Solution](#)

62. Pavlov's pouch is

- A. An artificial stomach
- B. A bag containing digestive enzymes
- C. A bag containing food
- D. Opened stomach of a dog.

Answer: D



[Watch Video Solution](#)

63. Intracellular digestion occurs in human body for

A. Lipids

B. Proteins

C. Sucrose

D. All the above.

Answer: C



Watch Video Solution

64. Sucrose is broken down in the lining layer of intestine to form fructose and glucose. The products are

A. Passed into blood

B. Poured into intestinal lumen

C. Utilised in the living cells

D. Passed inwardly to supply the whole wall of intestine.

Answer: B

 [Watch Video Solution](#)

65. Phytomenadione is

A. β -phyloquinone

B. α -phyloquinone

C. K_1

D. Both B and C.

Answer: D



Watch Video Solution

66. A deficiency disease which causes drying up of skin and hair is

- A. Pellagra
- B. Beri-beri
- C. Scurvy
- D. Anorexia.

Answer: C



Watch Video Solution

67. Chymase is

- A. Rennin
- B. Activator or prorennin
- C. Activator of chymotrypsinogen
- D. Gastric juice.

Answer: A



Watch Video Solution

68. Indigestible plant matter that dissolves in water is called

- A. Pectin

B. Gum

C. Hemicellulose

D. Soluble fibre.

Answer: D



Watch Video Solution

69. Soluble fibre is useful medically for

A. Optimum functioning of alimentary cannal

B. Reduction in blood cholesterol

C. Binding of faecal matter

D. Noncorrosion of intestinal lining.

Answer: B



Watch Video Solution

70. Rapid deep breathing is

A. Dyspnoea

B. Hypopnoea

C. Hyperpnoea

D. None of the above

Answer: C



Watch Video Solution

71. Hyperventilation or hyperpnoea causes

- A. Increased carbon dioxide concentration of blood
- B. Decreased blood carbon dioxide concentration
- C. Temporary stoppage of respiration
- D. Both B and C.

Answer: D



Watch Video Solution

72. Hyperventilation is

- A. Extra deep breathing
- B. Rapid breathing

C. Rapid shallow breathing

D. Rapid deep breathing.

Answer: D



Watch Video Solution

73. Yoga trainees perform rapid deep breathing in order to

A. Cleanse respiratory tract

B. Mental concentration

C. Hold breath for longer period

D. All the above.

Answer: C



[Watch Video Solution](#)

74. Panting after vigorous exercise is due to

- A. Oxygen debt
- B. Continuity of deep breathing even after exercise
- C. Continuity of mouth breathing started during exercise
- D. Requirement of rapid dissipation of energy.

Answer: A



[Watch Video Solution](#)

75. Mountain sickness is due to

- A. Colder atmosphere
- B. Higher humidity
- C. Winds
- D. Rarefaction of air.

Answer: D

 [Watch Video Solution](#)

76. Which is a component of mountain sickness ?

- A. Difficult breathing
- B. Nausea and headache

C. Bluish tongue

D. All the above.

Answer: D



Watch Video Solution

77. In a bird which organ gets inflated on inspiration

A. Lungs

B. Air sacs

C. Air capillaries

D. All the above.

Answer: B



[Watch Video Solution](#)

78. Gaseous exchange occur in birds inside

A. Air capillaries

B. Air sacs

C. Bronchi

D. Sacchobronchi.

Answer: A



[Watch Video Solution](#)

79. Nonsecretion of uric acid in human beings produces

A. Uraemia

B. Gout

C. Calculi

D. Both B and C.

Answer: D



Watch Video Solution

80. Uric acid is excretory product in

A. Land animals

B. Aquatic animals

C. Amphibians

D. Animals that develop in shells.

Answer: D

 [Watch Video Solution](#)

81. Renal rickets are bending of weight bearing long bones
in

- A. Infants
- B. Young children
- C. Adolescents
- D. Elderly persons.

Answer: D



[Watch Video Solution](#)

82. Renal rickets is related to old age

- A. Vitamin D deficiency
- B. Osteoporosis
- C. Chronic kidney disease
- D. Both B and C.

Answer: D



[Watch Video Solution](#)

83. Macula densa is found in

A. Internal ear

B. Kidney

C. Liver

D. Spleen.

Answer: B



Watch Video Solution

84. In kidney macula densa is present in

A. Proximal convoluted tubule

B. Loop of Henle

C. Distal convoluted tubule

D. Bowman's capsule.

Answer: C

 [Watch Video Solution](#)

85. Cells of macula densa produce

A. Erythropoietin and relaxin

B. Renin

C. Angiotensionogen

D. Angiotensin.

Answer: B

 [Watch Video Solution](#)

86. Juxta-glomerular cells form

- A. Angiotensinogen and angiotensin
- B. Renin and erythropoietin
- C. Counter-current
- D. Selective secretory and absorptive apparatus.

Answer: B



Watch Video Solution

87. Human vertebral column has

- A. Four curves

B. No curves

C. Three curves

D. Two curves.

Answer: A



Watch Video Solution

88. Curvature of vertebral column is helpful in

A. Little jolting of viscera during springing

B. Increasing size of chest

C. Increasing size of pelvic region

D. All the above.

Answer: D



Watch Video Solution

89. Nucleus pulposus is present in

A. Spleen

B. Liver

C. Intervertebral discs

D. Brain.

Answer: C



Watch Video Solution

90. Nucleus pulposus represents

- A. Remains of notochord
- B. Area of ossification
- C. Region of non-ossification
- D. Area resistant to frictional damage.

Answer: A



Watch Video Solution

91. Language centres of the brain are located in

- A. Occipital lobes of cerebrum
- B. Right side of cerebrum

C. Frontal lobes

D. Left part of cerebrum.

Answer: D



Watch Video Solution

92. The area that controls ability to talk is speech centre of

A. Temporal lobe

B. Parietal lobe

C. Frontal lobe

D. All the above.

Answer: C



[Watch Video Solution](#)

93. Broca's area of frontal lobe is language centre for the

- A. Ability to talk
- B. Comprehension of spoken words
- C. Comprehension of written words
- D. All the above.

Answer: A



[Watch Video Solution](#)

94. Comprehension of spoken and written words take place in the region of

- A. Broca's gyrus
- B. Wernicke's area
- C. Somaesthetic area
- D. Association area.

Answer: B

 [Watch Video Solution](#)

95. Number of neurotransmitters is about

- A. 5

B. 10

C. 30

D. 50

Answer: D



Watch Video Solution

96. A neurotransmitter which also functions as hormone is

A. Acetylcholine

B. Dopamine

C. Noradrenaline/Norepinephrine

D. Both B and C.

Answer: C

 [Watch Video Solution](#)

97. An intermediate of adrenaline biosynthesis which is also a neurotransmitter is

- A. Glycine
- B. Gama-aminobutyric acid
- C. Dopamine
- D. Glutamic acid.

Answer: C

 [Watch Video Solution](#)

98. Dopamine neurons are connected with syndrome

A. Horton's syndrome

B. Parkinsonism

C. Schizophrenia

D. Both B and C.

Answer: D



Watch Video Solution

99. Dentist's nerve is

A. Trigeminal

B. Facial

C. Auditory

D. Glossopharyngeal.

Answer: A



Watch Video Solution

100. Distance between the focussing parts of the two human eyes is about.

A. 2 cm

B. 4 cm

C. 7 cm

D. 10 cm.

Answer: C



Watch Video Solution

101. Images formed of an object by the two human eyes are

- A. Similar
- B. Slightly different
- C. Completely different
- D. Both A and B.

Answer: B



Watch Video Solution

102. Presbyopia is due to

- A. Reduced elasticity of eye lens
- B. Protrusion of cornea
- C. Enlargement of eye ball
- D. Compression of eye ball.

Answer: A



Watch Video Solution

103. For a normal eye, distance of near point from the eye is.

- A. 25 cm

B. 20 cm

C. 15 cm

D. 10 cm.

Answer: A



Watch Video Solution

104. An old person requires spectacles for

A. Reading

B. Distant vision

C. Both A and B

D. Astigmatism.

Answer: C



Watch Video Solution

105. Some persons have an innate sense of direction. It is due to magnetic sensitivity of

- A. Cochlea
- B. Corpora quadrigemina
- C. Nose
- D. Pinna.

Answer: C



Watch Video Solution

106. In old persons damage to eyes occurs due to

- A. Skin wrinkles
- B. Insufficient tears
- C. Nose
- D. Pinna.

Answer: B



Watch Video Solution

107. The primary colours are

- A. Blue, violet and red

B. Blue, green and yellow

C. Blue, green and red

D. Violet, yellow and red.

Answer: C



Watch Video Solution

108. Complementary colours are

A. Red and blue

B. Orange and blue

C. Green and blue

D. Yellow and orange.

Answer: B



Watch Video Solution

109. α – and β -cells in the islets of Langerhans are respectively defunctioned by

- A. Mercuric chloride and alloxan
- B. Alloxan and DDT
- C. Alloxan and cobalt chloride
- D. Cobalt chloride and alloxan.

Answer: D



Watch Video Solution

110. Photoperiods are believed to be perceived by

- A. Hypothalamus
- B. Pineal body
- C. Pituitary gland
- D. Thyroid.

Answer: B



Watch Video Solution

111. Mammalian biorhythms may be due to differential secretion of

- A. FSH

B. MSH

C. Melatonin

D. Sex corticoids.

Answer: C



Watch Video Solution

112. Complex fatty acids that function as intercellular messengers are

A. Prostaglandins

B. Catecholamines

C. Sphingolipids

D. Steroids.

Answer: A

 [Watch Video Solution](#)

113. Synthetic prostaglandin is given to ladies for

- A. Labour induction
- B. Relieving discomfort of carriage
- C. Induction of ovulation
- D. Nonliberatin of ova.

Answer: A

 [Watch Video Solution](#)

114. This hormone is a catecholamine

- A. Dopamine
- B. Adrenaline
- C. Noradrenaline
- D. All the above.

Answer: D



Watch Video Solution