



BIOLOGY

BOOKS - DINESH PUBLICATION ENGLISH

HUMAN REPRODUCTION

Mcq

1. Primary sex organ is

- A. Ovary/Testis
- B. Uterus/Seminal Vesicle
- C. Breast/Beard
- D. Spermatic cord.

Answer: A::D



Watch Video Solution

2. Secondary sex organ is

A. Testis

B. Breast

C. Beard

D. Vas deferena.

Answer: C



Watch Video Solution

3. Vagina of the female reproductive system is

- A. Primary sex organ
- B. Accessory sex organ
- C. Secondary sex organ
- D. None of the above.

Answer: D



Watch Video Solution

4. Accessory sex character is

- A. Beard
- B. Breast
- C. Moustaches
- D. All the above.

Answer: B

 [Watch Video Solution](#)

5. External/accessory/secodnary sexual characters first appear in

A. Childhood

B. Puberty

C. Foetus

D. Adulthood

Answer: B

 [Watch Video Solution](#)

6. Temperature in scrotum necessary for sperm formation should be

- A. $2^{\circ}C$ above body temperature
- B. $2^{\circ}C$ below body temperature
- C. $4^{\circ}C$ above body temperature
- D. $4^{\circ}C$ below body temperature

Answer: A::D



Watch Video Solution

7. Cryptorchidism is

- A. Non descended testes in scrotum
- B. Non development of testes

C. Removal of scrotum

D. Breaking connection of vas deferens.

Answer: A

 [Watch Video Solution](#)

8. Puberty occurs in the human male at an age of:

A. 8-10 years

B. 11-14years

C. 14 -16 years

D. 18-20 years.

Answer: D

 [Watch Video Solution](#)

9. Voice is high pitched in

- A. Aged persons
- B. Adult males
- C. Boys
- D. Females.

Answer: C



[Watch Video Solution](#)

10. First menstrual cycle is

- A. Parturition
- B. Menopause
- C. Menarche

D. Implantation

Answer: C

 [Watch Video Solution](#)

11. Menopause occurs in females at the age of

A. 55-60years

B. 50-55 years

C. 45-60years

D. 37-42years

Answer: B

 [Watch Video Solution](#)

12. Nonprimate mammals have

- A. Menstrual cycle
- B. Oestrus cycle
- C. Breeding seasons
- D. Non breeding seasons.

Answer: D



Watch Video Solution

13. Semiferrous tubules open into

- A. Epididymis
- B. Vesa efferentia
- C. Vasa deferntia

D. Rete testis.

Answer: A::D

 [Watch Video Solution](#)

14. Partitions of testis develop from

A. Tunica albuginea

B. Tunica vasculosa

C. Tunica vaginalis

D. Rete testis.

Answer: C

 [Watch Video Solution](#)

15. Vasa efferentia possess

- A. Peristalsis
- B. Secretory cells
- C. Ciliated cells
- D. Openings for seminal vesicles.

Answer: C



Watch Video Solution

16. Epididymis is

- A. Network of sinuses between seminiferous tubules and vasa efferentia

- B. Intermediate structure between rete testis and vasa efferentia
- C. A long coiled tube between vasa efferentia and vas deferens
- D. Connection between vas deferens and seminal vesicle.

Answer: A::D

 [Watch Video Solution](#)

17. Vas deferens arises from

- A. Cauda epididymis
- B. Caput epididymis
- C. Corpus epididymis
- D. Rete testis.

Answer: C



Watch Video Solution

18. The common duct formed by the union of vas deferens and duct from seminal vesical is :

- A. Urethra
- B. Tunica vasculosa
- C. Ejaculatory duct.
- D. Spermatic duct.

Answer: D



Watch Video Solution

19. Glands of male reproductive system are

- A. Prostate and seminal vesicles
- B. Prostate, Bartholin's and seminal
- C. Seminal vesicles and Bartholin's glands
- D. Prostate, Cowpers and seminal.

Answer: D



Watch Video Solution

20. Number of sperms present in a single ejaculation of semen contains

- A. 10000
- B. 100,000-1000,000

C. 30-40 milion

D. 300-400milion

Answer: D

 [Watch Video Solution](#)

21. Menstrual cycle is generally of

A. 21 days

B. 28 days

C. 30 days

D. 40 days.

Answer: B

 [Watch Video Solution](#)

22. Menstrual cycle is controlled by

- A. Estrogen and progesterone of ovary
- B. FSH and LH of pituitary
- C. Both A and B
- D. FSH of pituitary.

Answer: C



Watch Video Solution

23. Progesterone is secreted by

- A. Corpus Luteum
- B. Corpus albicans
- C. Leydig cells

D. Graagian cells.

Answer: A::D

 [Watch Video Solution](#)

24. Clitoris is related to penis

A. Analogous

B. Homologous

C. Nonfunctional part in females

D. Functional equivalent in females.

Answer: B

 [Watch Video Solution](#)

25. Stages in menstrual cycle are

- A. Recovery phase and proliferative phase
- B. Proliferative, secretory and menstrual
- C. Proliferative secretory and menstrual
- D. Recovery phase, secretory phase and phase of menstrual flow.

Answer: C



Watch Video Solution

26. Luteal phase is the other name of

- A. Follicular phase
- B. Proliferative phase

C. Menstrual flow phase

D. Sec retory phase.

Answer: D

 [Watch Video Solution](#)

27. Follicular phase of menstrual cycle is the other name of :

A. Proliferative phase

B. Secretory phase

C. Luteal phase

D. Menstruation.

Answer: A::D

 [Watch Video Solution](#)

28. Mesorchium is peritoneal covering of

- A. Ovary
- B. Testis
- C. Kidney
- D. Liver.

Answer: B



[Watch Video Solution](#)

29. Vasa efferentia connect the

- A. Testis with epididymis
- B. Kidneys with cloaca
- C. Testes with urogenital ducts

D. None of the above.

Answer: A::D

 [Watch Video Solution](#)

30. Mesovarium is the peritoneal covering of

A. Ovary

B. Testis

C. Kidney

D. Liver.

Answer: A::D

 [Watch Video Solution](#)

31. At puberty woman starts producing

- A. Sperms
- B. Urine
- C. Young ones
- D. Ova.

Answer: D



Watch Video Solution

32. Ostium is an aperture present in

- A. Oviduct
- B. Fallopian funnel
- C. Ovisac

D. Coloaca.

Answer: B



Watch Video Solution

33. The function of mitochondria in sperm is

- A. To control the movement of sperm
- B. To provide energy for movement of sperm
- C. To provide energy to nucleus
- D. None of the above.

Answer: B



Watch Video Solution

34. The function of hyaluronidase is

- A. To form cone of reception in egg
- B. To puncture the vitelline membrane of egg
- C. It is not produced in human sperm
- D. None of the above.

Answer: B



Watch Video Solution

35. Primary oocyte is

- A. Haploid
- B. Diploid
- C. Polyploid

D. None of the above.

Answer: B

 [Watch Video Solution](#)

36. Secodnary ooyte is

A. Haploid

B. Diploid

C. Polyploid

D. None of the above.

Answer: A:D

 [Watch Video Solution](#)

37. Centrioles of sperm control

- A. Movement of tail
- B. Haploid number of chromosomes
- C. Help in fertilization
- D. None of the above.

Answer: A::D



Watch Video Solution

38. Progesterone is secreted by

- A. Carbohydrate
- B. Steroid
- C. Protein

D. Sterol.

Answer: B



Watch Video Solution

39. Tunica albuginea is the covering around

A. Ovary

B. Testis

C. Kidney

D. Heart.

Answer: B



Watch Video Solution

40. The fertilization membrane is secreted because

- A. It checks the entry of more sperms after fertilization
- B. It checks the entry of antigens in ovum
- C. It represents the left out tail sperm
- D. It represents the plasma membrane of sperm.

Answer: A::D



[Watch Video Solution](#)

41. Eggs from ovary are released in

- A. Oviduct
- B. Kidney
- C. Ureter

D. Coelom.

Answer: D

 [Watch Video Solution](#)

42. Cessation fo menstrual cycle in a woman is called

A. Ovulation

B. Puberty

C. Menopause

D. Implantation.

Answer: C

 [Watch Video Solution](#)

43. Development of foetus takes place in

- A. Vagina
- B. Uterus
- C. Ovary
- D. Oviduct.

Answer: B



Watch Video Solution

44. Lower narrow end of uterus is called

- A. Urethra
- B. Cervix
- C. Clitoris

D. Vulva.

Answer: B

 [Watch Video Solution](#)

45. The functional unit of testes of man is

- A. Uriniferous tubules
- B. Malpighian tubules
- C. Seminiferous tubules
- D. Acini or lobules.

Answer: C

 [Watch Video Solution](#)

46. Chorionic gonadotropic hormone is secreted by

- A. Pituitary
- B. Ovary
- C. Placenta
- D. Uterus.

Answer: C



Watch Video Solution

47. Vitelline membrane is a

- A. Primary egg membrane
- B. Secondary egg membrane
- C. Tertiary egg membrans

D. None of these

Answer: A::D

 [Watch Video Solution](#)

48. In mammals, the testis is posteriorly connected to the acrotal sac by an elastic cord called

A. Spermatic cord

B. Rachis

C. Gubernaculum

D. Ligament .

Answer: C

 [Watch Video Solution](#)

49. In man the sperms released from the testis take the following route to reach the urethra

A. Vasa efferentia, Bidder canal, uriniferous tubules and nephrostome

B. Vasa efferentia, epididymis, vasa deferens and urethra.

C. Vasa efferentia, Bidder's canal nephrostome

D. Vasa efferentia, collecting tubules and bidder canals.

Answer: B

 [Watch Video Solution](#)

50. Vaginal cavity of tunica vaginalis/vaginal coelom is found in

A. Ovaries of female

B. Testis of male

C. Vagina of female

D. None of the above

Answer: B



Watch Video Solution

51. Testosterone is secreted by

A. Leydi'g cells

B. Sertoli cells

C. Pituitary

D. Tastis.

Answer: A::D



Watch Video Solution

52. Penile urethra traverses through

- A. Corpors caveronoss
- B. Corpus spongiosum
- C. Corpus callosum.
- D. Corpus striatum.

Answer: B

 Watch Video Solution

53. Meiosis occurs in

- A. Primary spermatocytes
- B. Secondary espermatocytes

C. Both A and B

D. Spermatogonia.

Answer: C

 [Watch Video Solution](#)

54. Formation of primary spermatocyte/ oocyte from a spermatogonium/oogonium requires

A. Mitosis

B. Melosis I

C. Meiosis II

D. Growth.

Answer: D

 [Watch Video Solution](#)

55. Human female possess 44 + XX chromosomes. The secondary oocyte shall have:

A. 44+XX

B. 22+X

C. 22

D. 44

Answer: B



[Watch Video Solution](#)

56. Gestation period in human beings is:

A. 7 months

B. 9 months

C. 25 months

D. 8 months.

Answer: B



Watch Video Solution

57. Human embryo completes development in

A. 180 days

B. 300days

C. 250days

D. 266days.

Answer: D



Watch Video Solution

 [Watch Video Solution](#)

58. Gestation period of 280 days is calculated from time of

- A. Last menstruation
- B. Fertilization
- C. Next menstruation
- D. Puberty.

Answer: A::D

 [Watch Video Solution](#)

59. Foetus is nourished by

- A. Placenta
- B. Yolk

C. Blood

D. Phagocytosis.

Answer: A::D

 [Watch Video Solution](#)

60. Primary germ layers are

A. Trophoblast, ectoderm, mesoderm and endoderm

B. Endoderm, trophoectoderm and trophomesoderm

C. Trophomesoderm and trophoectoderm

D. Ectoderm, mesoderm and endoderm.

Answer: D

 [Watch Video Solution](#)

61. Noncellular layer is

- A. Theca interna
- B. Membrana granulosa
- C. Corona radiata
- D. Zona pellucida.

Answer: D



Watch Video Solution

62. Corona radiata is derived from

- A. Membrana granulosa
- B. Cumulus ovaricus
- C. Theca interna

D. Theca externa.

Answer: B

 [Watch Video Solution](#)

63. Sperm s move actively in female genital tract by

A. Creeping

B. Gliding

C. Swimming

D. Jet propulsion.

Answer: C

 [Watch Video Solution](#)

64. The rate of active movement of sperms is

- A. 1.5-3.0cm/min
- B. 1.5-3.0mm/min
- C. 1.5-3.0m/min
- D. 1.5-3.0m/hr.

Answer: B

 [Watch Video Solution](#)

65. Ovum receives the sperm in the region of

- A. Animal pole
- B. Vegetal pole
- C. Equator

D. Pigmented area.

Answer: A::D

 [Watch Video Solution](#)

66. Axial filament of sperm is formed by

A. Distal centriole

B. Proximal centriole

C. Mitochondrial spiral

D. DNA.

Answer: A::D

 [Watch Video Solution](#)

67. In corona radiata, the cells are held together by

- A. Cytoplasmic connections
- B. Cell membrane interdigitations
- C. Thin layer of intercellular cement
- D. Hyaluronic acid.

Answer: D



Watch Video Solution

68. Cells of corona radiata disperse just

- A. After fertilization
- B. Before implantation
- C. At the time of coming in contact with sperm

D. After cleavage.

Answer: B

 [Watch Video Solution](#)

69. Zona pellucida disintegrates just:

- A. Before fertilization
- B. After fertilization
- C. Midway during cleavage
- D. After completion of cleavage.

Answer: D

 [Watch Video Solution](#)

70. Body of embryo is formed from

- A. Trophoblast
- B. Inner cell mass
- C. Outer cell mass
- D. Trophoectoderm.

Answer: B



[Watch Video Solution](#)

71. Morphogenetic movements involve

- A. Movement of organs
- B. Movement of small cell masses
- C. Movement of large cells masses

D. Differentiation of cells.

Answer: B



[Watch Video Solution](#)

72. Primitive gut or archenteron is lined by

A. Ectoderm

B. Mesoderm

C. Endoderm

D. Trophoectoderm.

Answer: C



[Watch Video Solution](#)

73. Nerves develop from

- A. Ectoderm
- B. Mesoderm
- C. Endoderm
- D. Both layers of mesoderm and endoderm.

Answer: A::D



[Watch Video Solution](#)

74. Which is not formed by endoderm?

- A. Pancreas
- B. Kidneys with cloaca
- C. Liver

D. Lungs.

Answer: B



Watch Video Solution

75. Mesoderm produces

A. Brain

B. Heart

C. Urinary bladder

D. Middle ear.

Answer: B



Watch Video Solution

76. The organ not formed by ectoderm is

- A. Brain
- B. Spinal cord
- C. Internal ear
- D. gonads.

Answer: D



[Watch Video Solution](#)

77. Which is formed first ?

- A. Yolk sac
- B. Embryonic disc
- C. Trophoblast

D. Inner cell mass.

Answer: D

 [Watch Video Solution](#)

78. Part of primitive gut is

A. Yolk sac

B. Embryonic disc

C. Trophoblast

D. Inner cell mass.

Answer: A

 [Watch Video Solution](#)

79. Mesoderm proliferates from

- A. Trophoblast
- B. Cephalic end of embryonic disc
- C. Ectoderm of embryonic disc.
- D. Caudal end of embryonic disc

Answer: d

 [Watch Video Solution](#)

80. Foetal membranes produced by trophoblast are

- A. Chorion and allantois
- B. chorion and amnion
- C. Amnion and allatois

D. Allantois and yolk sac.

Answer: B



[Watch Video Solution](#)

81. Lens of eye retina is developed from

A. Ectodermal

B. Mesodermal

C. Endodermal

D. Ectodermal and mesodermal.

Answer: A



[Watch Video Solution](#)

82. Pancreas is

- A. Ectodermal
- B. Mesodermal
- C. Endodermal
- D. None of the above

Answer: C



Watch Video Solution

83. Kidneys are

- A. Ectodermal
- B. Mesodermal
- C. Endodermal

D. None of the above

Answer: B



Watch Video Solution

84. The internal ears develop from

A. Ectoderm

B. Endoderm

C. Mesoderm

D. Ectoderm and endoderm.

Answer: A



Watch Video Solution

85. Foetus developing in the genital tract without getting nourishment from the mother is a case of

A. Vivipary

B. Ovipary

C. Ovo-vivipary

D. None of the above.

Answer: C



[Watch Video Solution](#)

86. Tongue of frog/rabbit is

A. Ectodermal

B. Mesodermal

C. Endodermal

D. None of the above

Answer: C

 [Watch Video Solution](#)

87. Vertebral column develops from

A. Notochord

B. Nerve cord

C. Mesoderm

D. Endoderm.

Answer: A

 [Watch Video Solution](#)

88. Emboly is

- A. Migration of micromeres into the blastocoel
- B. Migration of macromeres into the blastocel
- C. Migration of endoderm,mesoderm and notochord in the
blastocoel
- D. None of the above.

Answer: C



Watch Video Solution

89. Solid blastula is known as

- A. Coeloblastula
- B. Disocoblastula

C. Stereoblastula

D. Superficial blastula.

Answer: C

 [Watch Video Solution](#)

90. Fertilization was first discovered by

A. Aristotle

B. Leeuwenhoek

C. Harvey

D. pander.

Answer: A

 [Watch Video Solution](#)

91. Cleavage was first seen by

A. Spallanzani

B. Aristotle

C. Hertwig

D. Harvey.

Answer: A



[Watch Video Solution](#)

92. the origin of germ layers in chick embryo was described by

A. Hans Speman

B. Pander

C. Charles Bonnet

D. None of the above.

Answer: B

 [Watch Video Solution](#)

93. Dtermination cleavage is found in

A. Coelenterates

B. Annelida

C. Nematodes

D. All the above.

Answer: D

 [Watch Video Solution](#)

94. Coeloblastula is found in

- A. Labeo
- B. Snakes
- C. Star fish
- D. Imop/

Answer: C



[Watch Video Solution](#)

95. The discoblastula is found in

- A. Echidna/Birds/Reptiles /Fishes
- B. Man
- C. Branchiostoma

D. Rana.

Answer: A

 [Watch Video Solution](#)

96. The superficial blastula is the characteristic of

- A. Birds
- B. Reptiles
- C. Insects
- D. Annelids.

Answer: C

 [Watch Video Solution](#)

97. Spiral cleavage is found in

- A. Coelenteratea
- B. Annelids
- C. Echinodermata
- D. Cephalopod Molluscs.

Answer: B



[Watch Video Solution](#)

98. The hypoblast (inner germ layer of gastrula) forms the

- A. Ectoderm
- B. Mesoderm
- C. Endoderm

D. None of the above.

Answer: C

 [Watch Video Solution](#)

99. the epiblast (outer germ layer of gastrula) forms the

A. Ectoderm

B. Mesoderm

C. Endoderm

D. None of the above.

Answer: A

 [Watch Video Solution](#)

100. The neurenteric canal opens to the outside by

- A. Mouth
- B. Blastopore
- C. Neuropore
- D. None of the above.

Answer: B



Watch Video Solution

101. The medullary tube is formed by

- A. Ectoderm
- B. Mesoderm
- C. Endoderm

D. None of the above.

Answer: A

 [Watch Video Solution](#)

102. the proctodaeum develops from

A. Ectoderm

B. Mesoderm

C. endoderm

D. None of the above.

Answer: A

 [Watch Video Solution](#)

103. The process by way of which a larva or miniature adult comes out of the egg membranes is called.

- A. Hatching
- B. Emboly
- C. Epiboly
- D. Ingression.

Answer: A



[Watch Video Solution](#)

104. Cleavage differs from mitosis because

- A. In cleavage there is no growth phase
- B. In cleavage consumption of O_2 increases

C. In cleavage nucleus-cytoplasmic ratio increases

D. All the above.

Answer: D

 [Watch Video Solution](#)

105. During gastrulation blastomeres move from the surface to their destination in the embryo. These movements are called

A. Migratory movements

B. Formative movements

C. Morphogenic movement

D. All the above.

Answer: D

 [Watch Video Solution](#)

106. During cleavage all division are

- A. Equal
- B. Reductional
- C. Mitotic
- D. Determinate.

Answer: C



Watch Video Solution

107. Division in which the egg divides completely is known as

- A. Holoblastic
- B. Meroblastic

C. Macroblastic

D. Blastogenic.

Answer: A

 [Watch Video Solution](#)

108. Heart is

A. Ectodermal

B. Mesodermal

C. Endodermal

D. None of the above.

Answer: B

 [Watch Video Solution](#)

109. Skeleton and muscles in a vertebrate embryo develop from

- A. Ectoderm
- B. Mesoderm
- C. Endo-mesoderm
- D. Endoderm.

Answer: B



Watch Video Solution

110. Ontogenetically, liver and pancreas are

- A. Ectodermal
- B. Mesodermal
- C. Endodermal

D. None.

Answer: C

 [Watch Video Solution](#)

111. Meroblastic cleavage takes place in

A. Hydra

B. Amphioxus

C. Frog

D. Chick.

Answer: D

 [Watch Video Solution](#)

112. During cleavage. What is true about cells?

- A. Nucleocytoplasmic ratio remains unchanged
- B. Size does not increase
- C. There is less consumption of oxygen
- D. The division is like meiosis.

Answer: B



Watch Video Solution

113. Human placenta is

- A. haemochorial
- B. Syndesmochorial
- C. yolk sac

D. Haemo-endothelial.

Answer: A

 [Watch Video Solution](#)

114. Allantois is embryonic membrane found in

A. Mammals

B. Birds

C. Reptiles

D. Birds, mammals and reptiels.

Answer: D

 [Watch Video Solution](#)

115. Amniotic fluid protects the foetus from

- A. Shock
- B. Encystment
- C. Degeneration
- D. Disease.

Answer: A



Watch Video Solution

116. Umbilical cord contains

- A. Umbilicus
- B. Placenta
- C. Discus proligerus

D. Allantoic artery and vein.

Answer: D

 [Watch Video Solution](#)

117. Amnion is helpful to embryo in

A. Nutrition

B. Protection from shock

C. Excretion

D. Respiration.

Answer: B

 [Watch Video Solution](#)

118. Gestation period is the duration:

- A. Between egg growth and ovulation
- B. Of fertilization
- C. Between fertilization and parturition
- D. Between preparation of sex cells and fertilisation.

Answer: C



Watch Video Solution

119. In mammals, the onset of pregnancy causes

- A. Secretion of testorsterone
- B. Degeneration of ovary
- C. Inhibition of further ovulation

D. Inhibition of fertilization.

Answer: C



Watch Video Solution

120. Vascular and excretory organs are formed from

A. Endoderm

B. Mesoderm

C. Ectoderm of embryonic disc.

D. Mesendoderm.

Answer: B



Watch Video Solution

121. In which organ the bulk is formed of endoderm

- A. Intestine
- B. Liver
- C. Heart Kidney.
- D. Kidney.

Answer: B



Watch Video Solution

122. Chosse the correct one

- A. Mesoderm-skeleton
- B. Mesoderm-brain
- C. Ectoderm-liver

D. Endoderm-epidermis.

Answer: A

 [Watch Video Solution](#)

123. In development, Eustachian tube is

A. Ectodermal

B. Mesodermal

C. Endodermal

D. Both mesodermal and endodermal.

Answer: C

 [Watch Video Solution](#)

124. In development, nervous system (brain, spinal cord, nerve cells) is

- A. Ectodermal
- B. Endodermal
- C. Endomesoderma
- D. Endomesodermal

Answer: A



[Watch Video Solution](#)

125. Which one develops from ectoderm?

- A. Liver and heart
- B. Notochord and vertebral column

C. Spinal cord and brain

D. Eye and skin.

Answer: C

 [Watch Video Solution](#)

126. Some parts developed from ectoderm are

A. Retina, epidermis and brain

B. Brain, liver and gills

C. Dermis, nerves and lungs

D. Spinal cord, epidermis and heart.

Answer: A

 [Watch Video Solution](#)

127. Olfactory epithelium develop from

- A. Embryonic endoderm
- B. Embryonic ectoderm
- C. Embryonic mesoderm
- D. Embronic mesenchyme.

Answer: B



[Watch Video Solution](#)

128. Notochord grows from

- A. Neuropore
- B. Prechordal plate
- C. Hypochordal rod

D. Chorda-mesoderm.

Answer: D

 [Watch Video Solution](#)

129. Notochord develops from

- A. Primary ectoderm
- B. Primary endoderm
- C. primary mesoderm
- D. Both A and B

Answer: C

 [Watch Video Solution](#)

130. Retina, eye lens brain and skin are formed from

- A. Mesoderm-skeleton
- B. Ectoderm
- C. Endoderm
- D. Both ectoderm and endoderm.

Answer: B



Watch Video Solution

131. Gonads/testes develop from embryonic

- A. Ectoderm
- B. Endoderm
- C. Mesoderm

D. Both mesoderm and endoderm.

Answer: C

 [Watch Video Solution](#)

132. What is true of cleavage?

- A. Daughter cells or blastomeres grow in size equal to parent cell
- B. Blastomeres separate
- C. Cytoplasm of blastomeres increases after each division.
- D. There is no growth of daughter cells.

Answer: D

 [Watch Video Solution](#)

133. Spermiogenesis changes

- A. Spermatogonium to primary spermatocyte
- B. Primary spermatocyte to secondary spermatocyte
- C. Secondary spermatocyte to spermatid
- D. Spermatid to sperm

Answer: D



Watch Video Solution

134. What is the total number of polar bodies formed during oogenesis in the ovary?

- A. 4
- B. 3

C. 1

D. 2

Answer: C



Watch Video Solution

135. In spermatogenesis, a primary spermatocyte produces four similar sperms while in oogenesis, a primary oocyte forms

- A. Four similar ova.
- B. Three large ova and one polar body
- C. Two large ova and two polar bodies
- D. One large ovum and 2-3 polar bodies.

Answer: D



Watch Video Solution

136. Human eggs are

- A. Alecithal
- B. Microlecithal
- C. Mesolecithal
- D. Macrolecithal.

Answer: A



Watch Video Solution

137. Sperms produce an enzymatic substance or lysin for dissolving egg coverings. It is called

- A. Hyaluronic acid

B. hyaluronidase

C. Androgamone

D. Diastase.

Answer: B



Watch Video Solution

138. Fertilizins are present over

A. Immature eggs

B. Mature eggs

C. Sperms

D. Polar bodies.

Answer: B



Watch Video Solution

139. How many sperms are produced from one primary spermatocyte?

- A. 8
- B. 6
- C. 2
- D. 4

Answer: D

 Watch Video Solution

140. 50 secondary oocytes in female and 50 secondary spermatocytes in male give rise to

- A. 50 ova and 100 sperms
- B. 100 ova and 200 sperms
- C. 200 ova and 50 sperms
- D. 100 ova and 100 sperms.

Answer: A

 [Watch Video Solution](#)

141. Which is the correct sequence in spermatogenesis?

- A. Spermatogonia → Spermatids → Secondary spermatocytes → Primary spermatocytes → Sperms
- B. Spermatogonia → Spermatids → Primary spermatocytes → Secondary spermatocytes → Sperms

C. Primary spermatocytes → Secondary spermatocytes → spermatids → Spermatogonia → Sperms

D. Spermatogonia → primary spermatocytes → Secondary spermatocytes → Spermatids → Sperms.

Answer: D

 [Watch Video Solution](#)

142. How many sperms are formed from a secondary spermatocyte?

A. 4

B. 8

C. 2

D. 1

Answer: C



Watch Video Solution

143. What is true about the process of fertilization?

- A. Only acrosome of sperms enters the egg
- B. Two haploid nuclei fuse but the fusion nucleus divides immediately to form two haploid nuclei.
- C. entry of sperm activates the egg to complete meiosis
- D. Only one sperm enters an egg.

Answer: D



Watch Video Solution

144. What are the diploid stages in gametogenesis?

- A. 50 secondary spermatocytes and 50 secondary oocytes
- B. 25 secondary spermatocytes and 25 secondary oocytes.
- C. 25 primary spermatocytes and 25 primary oocytes
- D. 25 primary spermatocytes and 100 primary oocytes.

Answer: B



Watch Video Solution

145. Which chemical of the egg attracts and holds sperm?

- A. Fertilizin
- B. Antifertilizin
- C. Agglutin

D. Angtiagglutin.

Answer: D

 [Watch Video Solution](#)

146. Human egg has

- A. One Y-chromosome
- B. One x-Chromosome
- C. Two X-Chromosomes
- D. One X-chromosome and one Y-hromosome.

Answer: A

 [Watch Video Solution](#)

147. Which is the correct sequence in spermatogenesis?

- A. Spermatogonia → Spermatids → Secondary spermatocytes → Primary spermatocytes → Sperms
- B. Spermatogonia → Spermatids → Primary spermatocytes → Secondary spermatocytes → Sperms
- C. Primary spermatocytes → Secondary spermatocytes → spermatids → Spermatogonia → Sperms
- D. Spermatogonia → primary spermatocytes → Secondary spermatocytes → Spermatids → Sperms.

Answer: B



Watch Video Solution

148. The eggs of some mammals have more yolk. They are

A. Aquatic mammals

B. Metatherians

C. Protherians

D. Eutherians.

Answer: C



Watch Video Solution

149. Meroblastic cleavage is division.

A. Horizontal

B. Partial/parietal

C. Total

D. Spiral

Answer: B



Watch Video Solution

150. Insec egg is

A. Homolecithal

B. Telolecithal

C. Centrolecithal

D. Alecithal.

Answer: C



Watch Video Solution

151. A morula can be differentiated from blastula in

- A. Presence of cavity
- B. Presence of more yolk
- C. Presence of yolk
- D. Absence of cavity.

Answer: D

 [Watch Video Solution](#)

152. A zygote is completely divided into two by a cleavage furrow.

The cleavage type is

- A. Equatorial
- B. Meroblastic

C. Radial

D. Holoblastic.

Answer: D

 [Watch Video Solution](#)

153. Eye lens is formed from

A. Ectoderm

B. Mesoderm

C. Endoderm

D. Ectoderm and mesoderm.

Answer: C

 [Watch Video Solution](#)

154. Gastrula and stage is characterised by

- A. End of Blastocoel
- B. Blastopore
- C. Formation of neural tube
- D. End of archenteron.

Answer: A



Watch Video Solution

155. Which one contains only mesodermal structure?

- A. Liver, heart, blood, and muscles
- B. Notochord, heart, blood and bone
- C. Liver, heart, blood and bone

D. Liver,blood ,notochord and muscles.

Answer: B

 [Watch Video Solution](#)

156. Enzyme secreted by sperm is

- A. Sperm trypsin
- B. Sperm lysin
- C. Male hormone
- D. Sperm gastrin.

Answer: B

 [Watch Video Solution](#)

157. Meroblastic segmentation occurs during the development of

- A. Pigeon
- B. Human
- C. Frog
- D. Dog, Fish.

Answer: A

 [Watch Video Solution](#)

158. In simplest type of placenta, Six barriers separate maternal blood from foetal blood. How many barriers are lost in human placenta?

- A. One Y-chromosome

B. Two haploid nuclei fuse but the fusion nucleus divides immediately to form two haploid nuclei.

C. three

D. four

Answer: C



Watch Video Solution

159. In centrolecithal eggs, the cleavage is

A. Equal holoblastic

B. Unequal holoblastic

C. Unequal holoblastic

D. Meroblastic superficial.

Answer: D



Watch Video Solution

160. Blastopore is

- A. Opening of neural tube
- B. Opening of gastrocel/archenteron
- C. Future anterior end of embryo
- D. Found in blastula.

Answer: B



Watch Video Solution

161. On fertilization of egg nucleus with sperm nucleus

- A. Second maturation is completed
- B. Embryo is formed
- C. First polar body is formed
- D. First maturation is completed.

Answer: B



Watch Video Solution

162. Secodnary oocyte is formed

- A. Before ovum maturation
- B. After mitosis of germinal cells
- C. After fertilization
- D. Before fertilization

Answer: D

 [Watch Video Solution](#)

163. Extrusion of second polar body from egg occurs:

- A. After entry of sperm before completion of fertilization
- B. After completion of fertilisation
- C. Before entry of sperm
- D. Without any relation of sperm entry.

Answer: A

 [Watch Video Solution](#)

164. Termination of gastrulation is marked by

- A. Obliteration of blastocoel
- B. Obliteration of archenteron
- C. Closure of blastopore
- D. Closure of neural tube.

Answer: A

 [Watch Video Solution](#)

165. In mammals the archenteron/primitive gut is lined with

- A. Ectoderm
- B. Mesoderm
- C. Endoderm
- D. Mesoderm and endoderm.

Answer: C



Watch Video Solution

166. Relative sizes of egg cell, morula, blastula and gastrula cells are

- (a) Egg cell is the smallest and gastrula cell is the largest
- (b) All are of equal size
- (c) Egg cell is the largest and morula cell is the smallest
- (d) Egg cell is the largest and gastrula cell is the smaller.

A. Egg cell is the smallest and gastrula cell is the largest

B. All are of equal size

C. Egg cell is the largest and morula cell is the smallest.

D. Egg cell is the largest and gastrula cell is the smaller.

Answer: C



[Watch Video Solution](#)

167. Polar bodies develop during the formation of

- A. Spermatogonia → Spermatids → Secondary spermatocytes → Primary spermatocytes → Sperms
- B. Ova
- C. Oogonia
- D. Sperms.

Answer: B



[Watch Video Solution](#)

168. In telolecithal egg the yolk is found

A. All over the egg

B. On one side

C. Both the sides

D. Centre.

Answer: B



Watch Video Solution

169. At the time of fertilization.

A. First maturation division is completed

B. Embryo is formed

C. Second maturation division is completed

D. First polar body is formed.

Answer: C

 [Watch Video Solution](#)

170. Human beings are

- A. Ovoviviparous
- B. Oviparrous
- C. Parthenogenetic
- D. Viviparous.

Answer: D

 [Watch Video Solution](#)

171. Extra-embryonic membranes provide

- A. Cells to the embryo
- B. Protection to embryo
- C. Nutrition to embryo
- D. Both B and c.

Answer: D



Watch Video Solution

172. Acrosome reaction in sperm is triggered by

- A. Capacitation
- B. Release of lysin
- C. Influx of Na^+
- D. Release of fertilisin .

Answer: D

 [Watch Video Solution](#)

173. Amount of yolk and its distribution are changed in the egg.

Which one is affected?

- A. Pattern of cleavage
- B. Formation of zygote
- C. Number of blastomeres
- D. Fertilization

Answer: A

 [Watch Video Solution](#)

174. Acrosome is made up of

- A. Mitochondria
- B. Centrioles
- C. golgi bodies
- D. Ribosomes.

Answer: C



Watch Video Solution

175. Scrotal sacs of man and rabbit are connected with the abdominal cavity by

- A. Inguinal canal

B. Haversian canal

C. Vagina cavity

D. Spermatic canal.

Answer: A



Watch Video Solution

176. Eggs are liberated from ovary in humans in the

A. Secondary oocyte stage

B. Primary oocyte stage

C. Mature ovum stage.

D.

Answer: A



Watch Video Solution

177. Cryptorchidism is a condition in which

- A. Unable to descend in scrotal sacs
- B. Unable to produce sperms
- C. Having been surgically removed
- D. Having remained undeveloped.

Answer: A

 Watch Video Solution

178. In mammals, the testes occur in scrotal sacs outside the viscera because of the

- A. Presence of urinary bladder

B. Presence of rectum

C. Long vas deferens

D. Requirement of low temperature for spermatogenesis.

Answer: D



[Watch Video Solution](#)

179. In between spermatogonia are found

A. Germinal cells

B. Sertoli cells

C. Epithelial cells

D. Lymph space.

Answer: B



[Watch Video Solution](#)

180. Testosterone is secreted by

- A. Acinar cells
- B. graafian follicles
- C. Leyding cells
- D. Hepatic cells.

Answer: C

 Watch Video Solution

181. The Graafian follicles are found in

- A. Testis of mammal
- B. Ovary of frog

C. Ovary of cockroach

D. Ovary of mammals

Answer: D

 [Watch Video Solution](#)

182. Sertoli cells are found in

A. Seminiferous tubules

B. Germinal epithelium

C. Cauda epididymis

D. Caput epididymis

Answer: A

 [Watch Video Solution](#)

183. Cells of leydig occur in

- A. Liver and heart
- B. Ovary
- C. Testis
- D. Spleen.

Answer: C



Watch Video Solution

184. Occurrence of Leydig's cells and their secretion is

- A. Liver-cholesterol
- B. Ovary-estrogen
- C. Testis-testosterone/androgens

D. Pancreas-glucagon.

Answer: C

 [Watch Video Solution](#)

185. Which accessory genital gland occurs only in mammalian male?

A. Cowper's gland

B. Bartholin gland

C. Prostate gland

D. Perineal gland.

Answer: C

 [Watch Video Solution](#)

186. Site of fertilization in a mammal is

- A. Ovary
- B. Uterus
- C. Vagina
- D. Fallopian tube.

Answer: D



Watch Video Solution

187. Endometrium is lining of

- A. Testis
- B. Urinary bladder
- C. uterus

D. Ureter.

Answer: C

 [Watch Video Solution](#)

188. Seminiferous tubules occur in :

- A. Liver
- B. kidney
- C. Ovary
- D. Testis.

Answer: D

 [Watch Video Solution](#)

189. Spermatogenesis and sperm differentiation are under the control of

- A. FSH
- B. LH
- C. Testosterone
- D. Parathyroid hormone.

Answer: A



Watch Video Solution

190. Bartholin's glands of female correspond to which glands in male?

- A. Inguinal glands

B. Prostate glands

C. Cowper's glands

D. Rectal glands

Answer: C



Watch Video Solution

191. Cowper's glands are found in:

A. Male mammals

B. Female mammals

C. Male amphibians

D. Female amphibians.

Answer: A



Watch Video Solution

 Watch Video Solution

192. Corpus luteum is

- A. Excretory
- B. Endocrine
- C. Digestive
- D. Reproduction

Answer: B

 Watch Video Solution

193. enzyme hyaluronidase is synthesised in

- A. Head of sperm
- B. Golgi bodies of acrosome

C. Lsosome of acrosome

D. Tail of sperm.

Answer: B

 [Watch Video Solution](#)

194. In mammals maturation of sperms take place at a temperature

A. Equal to that of body

B. Higher than that of body

C. Higher than that of body

D. Lower than that of body

Answer: C

 [Watch Video Solution](#)

195. The middle piece of the sperm contains

- A. Mitochondria and centriole
- B. Mitochondria only
- C. Centriole only
- D. Nucleus and mitochondria.

Answer: A



Watch Video Solution

196. Tail-less sperm occurs in

- A. Frog
- B. Ascaris
- C. Amphioxus

D. Rabbit.

Answer: B

 [Watch Video Solution](#)

197. Onset of pregnancy

- A. Stimulate testosterone secretion
- B. Inhibits further ovulation
- C. Leads to degeneration of ovary
- D. Inhibite fusion of egg and sperm nucleii.

Answer: B

 [Watch Video Solution](#)

198. The Sertoli cells occur in

- A. Human testis
- B. Frog testis
- C. Human ovary
- D. Frog ovary.

Answer: A



Watch Video Solution

199. Graffian follicles contain

- A. Corpus luteum
- B. Corpus alibicana
- C. Theca externa and theca interna

D. Oogonial cells.

Answer: C

 [Watch Video Solution](#)

200. Brunner's glands occur in

- A. Females and help in vestibular lubrication.
- B. Females and produce oestrogen for regulating secondary sexual characters
- C.
- D. Males and produce alkaline fluid for neutralising urethral acidity.

Answer: A

 [Watch Video Solution](#)

201. Loss of reproductive capacity in women after the age of 45 years is

- A. Mensturation
- B. Ageing
- C. Menopause
- D. Menarche.

Answer: C

 Watch Video Solution

202. Urine of the-would-be mother contains.

- A. LH

B. Progesterone

C. FSH

D. hCG.

Answer: D



Watch Video Solution

203. Which one is a primary sex organ ?

A. Scrotum

B. Penis

C. Testis

D. Prostate.

Answer: C



Watch Video Solution

204. Which is correct?

- A. Menstrual cycle is present in all mammals
- B. Menstrual cycle is present in all primates.
- C. Estrus cycle occurs in all mammals
- D. Most mammals are ovoviviparous.

Answer: B

 Watch Video Solution

205. Yellow corpus luteum occurs in mammals in

- A. Heart to initiate heart beat
- B. Skin to function as pain receptor

C. Brain and connects cerebral hemispheres

D. Ovary for secretion of progesterone.

Answer: D

 [Watch Video Solution](#)

206. A female gland corresponding to the prostate of males is

A. Bartholin's gland

B. Bulbourethral gland

C. Clitoris

D. None of the above.

Answer: D

 [Watch Video Solution](#)

207. What would happen if vasa deferentia of man are cut ?

- A. Sperms are non-nucleate
- B. Spermatogenesis does not occur
- C. Semen is without sperms
- D. Sperms are nomotile.

Answer: C



[Watch Video Solution](#)

208. Fertilization is :

- A. Union of diploid spermatozoon with diploid ovum to form
diploid zygote

B. Union of haploid sperm with haploid ovum to form haploid zygote

C. Union of haploid sperm with haploid ovum to form diploid zygote

D. Union of diploid sperm with haploid ovum to form triploid zygote.

Answer: C



Watch Video Solution

209. Vascular tissue is derived from

A. Epithelium q

B. Ectoderm

C. All germinal layers

D. Mesoderm.

Answer: D

 [Watch Video Solution](#)

210. Which one is produced by mesoderm?

A. Heart and notochord

B. Heart and brain

C. Spinal cord and notochord

D. Brain and notochord.

Answer: A

 [Watch Video Solution](#)

211. First step in activation of ovum during process of fertilization is

- A. Formation of fertilization membrane
- B. Fertilizin-antifertilizin reaction
- C. Penetration of sperm in ovum
- D. Formation of fertilization cone.

Answer: B



[Watch Video Solution](#)

212. In a mammalian sperm, spirally arranged mitochondria around an axial filament occurs in

- A. Middle piece

- B. Head
- C. End piece of tail
- D. Principal piece of tail.

Answer: A

 [Watch Video Solution](#)

213. A mature sperm has

- A. A pair of flagella
- B. A nucleus, an acrosome and a centrole
- C. A nucleus, an acrosome, a pair of centrioles
- D. A nucleus an acrosome a pair of cntrioles and a tail.

Answer: D

 [Watch Video Solution](#)

214. The extraembryonic membranes of mammalian embryo are derived from

- A. Inner cell mass
- B. Trophoblast
- C. Formative cells
- D. Follicle cells.

Answer: B

 Watch Video Solution

215. What is true about cleavage in the fertilised egg in humans?

- A. Meroblastic

- B. Starts when egg reaches uterus
- C. Starts in fallopian tube.
- D. It is identical to normal mitosis.

Answer: C

 [Watch Video Solution](#)

216. Total cleavage is possible in eggs

- A. Isolecithal
- B. Mesolecithal
- C. Oligolecithal
- D. Telolecithal.

Answer: C

 [Watch Video Solution](#)

217. Solid ball of cell produced by repeated cleavage is called

- A. Morula
- B. Blastula
- C. Blastocyst
- D. Blastodisc.

Answer: A

 Watch Video Solution

218. Membrane that gives protection to embryo from external shocks is

- A. Amnion

B. Allantois

C. Chorion

D. Placenta.

Answer: A



Watch Video Solution

219. In mammals, primitive streak gives rise to

A. Ectoderm

B. Mesoderm

C. Endoderm

D. All the germ layers.

Answer: B



Watch Video Solution

 Watch Video Solution

220. Migration and rearrangement of cells during embryo development occur in

- A. Epiboly
- B. emboly
- C. Involution
- D. Gastrulation.

Answer: D

 Watch Video Solution

221. Immediate membrane covering the mammalian egg is

- A. Corona radiata

B. Zona pellucida

C. Vitelline membrane

D. Chorion.

Answer: C



Watch Video Solution

222. Chemical substance present on the surface of sperm is

A. Hyalouronidase

B. Antifertilizin

C. Agglutinin

D. Fertilizin.

Answer: B



Watch Video Solution

223. Breaking of acrosome membrane is:

- A. Agglutination
- B. Activation
- C. Cavitation
- D. Capacitation.

Answer: A

 Watch Video Solution

224. At the end of first meiotic division, male germ cell differentiates into

- A. Secodnary spermatocyte

B. Primary spermatocyte to secondary spermatocyte

C. Spermatogonium

D. Spermatid.

Answer: A



[Watch Video Solution](#)

225. Layer of blastocyst that gives rise to ectoderm is

A. Trophoectoderm

B. Embryo disc

C. Cnidoblast

D. Amnion.

Answer: B



[Watch Video Solution](#)

 Watch Video Solution

226. State two parameters for tiger census in our country.

 Watch Video Solution

227. Foetal membrane that provides the first blood corpuscle for circulation in embryo is

- A. Trophoblast
- B. Yolk sac
- C. Amnion and allantois
- D. Chorion.

Answer: B

 Watch Video Solution

228. Which is urinary bladder of child in womb?

- A. Urinary bladder
- B. Liver
- C. Allantois
- D. Amnion.

Answer: C



Watch Video Solution

229. Type of cleavage in an eggs is determined by

- A. Amount and distributin of yolk
- B. Number of egg membrane
- C. Size and location of nucleus

D. Shape and size of sperm.

Answer: A

 [Watch Video Solution](#)

230. Ectoderm produces

- A. Mesoderm
- B. Proctoderm
- C. Stomoderm
- D. Both B and C.

Answer: D

 [Watch Video Solution](#)

231. Egg with little yolk is

- A. Alecithal
- B. Microlecithal
- C. Mesolecithal
- D. Polylecithal.

Answer: B



Watch Video Solution

232. Coelom is formed by splitting of

- A. Mesoderm-skeleton
- B. Ectoderm
- C. Endoderm

D. All the above.

Answer: A

 [Watch Video Solution](#)

233. Neural tube is formed by

A. Endoderm

B. Mesoderm

C. Ectoderm

D. Megaspore.

Answer: C

 [Watch Video Solution](#)

234. Which one develops from endoderm.

- A. Nervous system, urinary bladder and eye
- B. Liver, connective tissue and heart
- C. Thymus, spinal cord and brain
- D. Liver, pancreas and thymus/thyroid.

Answer: D



Watch Video Solution

235. Which one develops from ectoderm

- A. Adrenal medulla
- B. Adrenal cortex
- C. Blood

D. Lymph.

Answer: A

 [Watch Video Solution](#)

236. When do the three germinal layers differentiate

A. Blastula

B. Gastrula

C. Cleavage

D. Fertilization.

Answer: B

 [Watch Video Solution](#)

237. Monozygotic twins are formed when:

- A. Two ova are fertilized simultaneously
- B. Incomplete cleavage of zygote
- C. First cleavage of zygote is followed by separation into two
- D. There is no cleavage.

Answer: C



Watch Video Solution

238. Which one is not formed from ectoderm?

- A. Notochord
- B. Epidermis
- C. Internal ear

D. Branchial arches.

Answer: A

 [Watch Video Solution](#)

239. Which is correct sequence of egg layers from outside to inside

- A. Rardiated, Proliferous and Pellucida
- B. Proliferous, Radiata and Pellucids
- C. Proliferous, Yolk Sac and Radiata
- D. None of the above.

Answer: B

 [Watch Video Solution](#)

240. Reptile and bird egg are

- A. Macrolecithal
- B. Oligolecithal
- C. Mesolecithal
- D. Alecithal.

Answer: A



Watch Video Solution

241. Fertilization is fusion of

- A. Diploid spermatozoan with diploid ovum to form diploid zygote

B. Haploid spermatozoan with diploid ovum to form diploid zygote

C. Diploid spermatozoan with haploid ovum to form dioploid zygote

D. Haploid spermatozoan with haploid ovum to form diploid zygote.

Answer: D



Watch Video Solution

242. Egg of Frog is

A. Centrolecithal

B. Macrolecithal

C. Telolecithal

D. Microlecithal.

Answer: C

 [Watch Video Solution](#)

243. In the development of Frog. Gastrulation is followed by

- A. Invagination
- B. Emboly
- C. Epiboly
- D. All the above.

Answer: D

 [Watch Video Solution](#)

244. ATP was discovered by

- A. Leuwenhoek
- B. Aristotle
- C. Graaf
- D. Pander

Answer: A



Watch Video Solution

245. Which is derived from ectoderm?

- A. Epidermis
- B. Spinal cord
- C. Retina

D. All the above.

Answer: D

 [Watch Video Solution](#)

246. Two formative movements that take place during gastrulation are

- A. Involutin and invagination
- B. Epiboly and emboly
- C. Invagination and ingression
- D. Ingression and delamination.

Answer: B

 [Watch Video Solution](#)

247. During cleavage, nucleocytoplasmic ratio nucleus/cytoplasm

- A. Increases
- B. Decreases
- C. Remains same
- D. None of the above.

Answer: A



[Watch Video Solution](#)

248. Sperm head contains

- A. Mitochondria
- B. Nucleus
- C. Yolk

D. Centrosome

Answer: B

 [Watch Video Solution](#)

249. Which part of the sperm plays an important role in penetrating the egg membrane?

A. Tail

B. Acrosome

C. Allosome

D. Autosome.

Answer: B

 [Watch Video Solution](#)

250. Cleavage involving in complete division is

- A. Spiral
- B. Meroblastic
- C. Holoblastic
- D. Meridional

Answer: B



Watch Video Solution

251. Atretic follicles are found in the

- A. Ovary
- B. Thymus
- C. Testis

D. Liver

Answer: A

 [Watch Video Solution](#)

252. Preparation of sperm before penetration of ovum is

- A. Spermatation
- B. Coition
- C. Insemination
- D. Capacitation.

Answer: D

 [Watch Video Solution](#)

253. Acrosomal reaction occurs at the time of

- A. Excretion
- B. Painful stimulation
- C. Movement of sperm
- D. Fertilisation.

Answer: D



Watch Video Solution

254. Third phase of embryo development is

- A. Cleavage
- B. Fertilization
- C. Gametogenesis

D. Gastrulation.

Answer: D

 [Watch Video Solution](#)

255. Villi of human placenta develop from

A. Chorion and allantois

B. Allantois

C. Yolk sac

D. Both A and B

Answer: A

 [Watch Video Solution](#)

256. Active inrolling of endodermal and mesodermal cells into interior of embryo is

- A. Ingression
- B. Involution
- C. Inversion
- D. Epiboly.

Answer: B



[Watch Video Solution](#)

257. Holoblastic cleavage occurs in

- A. Insects
- B. Frog

C. Birds

D. Mammals.

Answer: D



Watch Video Solution

258. Presence of massive yolk at one end makes the egg

A. Telolecithal

B. Mesolecithal

C. Centrolecithal

D. Oligolecithal.

Answer: A



Watch Video Solution

259. Point of sperm entry forms

- A. Axis of cleavage
- B. Grey crescent
- C. Dorsal lip of blastopore
- D. Centre of embryo rotation.

Answer: A



Watch Video Solution

260. Liver and pancreas develop from

- A. Ectoderm
- B. Endoderm
- C. Mesoderm

D. Both A and B

Answer: B



[Watch Video Solution](#)

261. Acrosome of sperm contains

A. Tail part

B. Behind the nucleus

C. Middle piece

D. Tip.

Answer: D



[Watch Video Solution](#)

262. Oogenesis consists of

- A. Multiplication phase
- B. Growth phase
- C. Maturation phase
- D. All the above.

Answer: D



Watch Video Solution

263. Fertilised ovum is transplanted in uterus after

- A. 1 day
- B. 7 day
- C. 8 days

D. 10days.

Answer: B

 [Watch Video Solution](#)

264. Correct sequence in development is :

A. Fertilization → Zygote → Cleavage → Morula →

Blastula → Gastrula

B. Fertilization → Zygote → Blastula → Morula →

Cleavage → Gastula

C. Fertilization → Cleavage → Zygote → Blastula →

Gastrula.

D. Cleavage → Zygote → Fertilization → Morula →

Blastula → Gastrula.

Answer: A

 [Watch Video Solution](#)

265. Eye develop from

- A. Ectoderm
- B. Mesoderm
- C. Endoderm
- D. Both A and B

Answer: D

 [Watch Video Solution](#)

266. Middle piece of mammalian sperm contains

A. Nucleus

B. Vacuole

C. Mitochondria

D. Centriole.

Answer: C



Watch Video Solution

267. Egg with peripheral cytoplasm around the yolk is

A. Isolecithal

B. Microlecithal

C. Telolecithal

D. Centrolecithal

Answer: D



Watch Video Solution

268. Immediately after ovulation, the mammalian egg is covered by a membrane known as

- A. Chorion and allantois
- B. Zona pellucida
- C. Corona radiata
- D. Vitelline membrane.

Answer: B



Watch Video Solution

269. Leydig cells produce:

- A. estrogen
- B. Progesterone
- C. Testosterone
- D. Corticosterone.

Answer: C



Watch Video Solution

270. Spreading of presumptive ectoderm on underlying mass of cells is

- A. Epiboly
- B. Invagination

C. Ingression

D. Delamination.

Answer: A

 [Watch Video Solution](#)

271. The most primitive type of mammalian placenta is

A. Syndesmochorial

B. Endotheliochorial

C. Haemochorial

D. Epitheliochorial.

Answer: D

 [Watch Video Solution](#)

272. Meroblastic cleavage occur in egg

- A. Isolecithal
- B. Microlecithal
- C. Telocithal
- D. All the above.

Answer: C



Watch Video Solution

273. A change in ovum after the penetration of sperm is

- A. Formation of first polar body
- B. Second meiosis
- C. First meiosis

D. Formation of pronuclei,

Answer: B

 [Watch Video Solution](#)

274. Adrenal medulla and membranous labyrinth develop from

- A. Ectoderm
- B. Endoderm
- C. Mesoderm
- D. Both B and C

Answer: A

 [Watch Video Solution](#)

275. Ovulation occurs under the influence of

- A. LH
- B. FSH
- C. Estrogen
- D. Progesterone.

Answer: A

 [Watch Video Solution](#)

276. If somatic chromosomes' number is 40, what shall be the chromosomal number in the cell of seminiferous tubules ?

- A. 40
- B. 20

C. 10

D. 40 and 20.

Answer: D

 [Watch Video Solution](#)

277. In the 28 days human ovarian cycle, the ovulation takes place typically on

A. Day 1

B. Day 5

C. Day 14

D. Day 28.

Answer: C

 [Watch Video Solution](#)

278. Progesterone is secreted by

- A. Corpus luteum
- B. Thyroid
- C. Thymus
- D. Testis.

Answer: A



Watch Video Solution

279. Release of oocytes/ova from ovary is

- A. Gestation
- B. Ovulation

C. Parturition

D. Implantation.

Answer: B

 [Watch Video Solution](#)

280. The growth and maturation of Graafian follicle is caused by :

A. FSH-LH

B. FSH-LTH

C. ACTH-LH

D. GH-ADH

Answer: A

 [Watch Video Solution](#)

281. For ovulation in reflex ovulators

- A. Coitus is necessary
- B. Coitus is not necessary
- C. Plenty of food is not necessary
- D. Plenty of food is necessary.

Answer: A



Watch Video Solution

282. Testes of rabbit occur :

- A. On either side of dorssal aorta
- B. Inside body
- C. On sides of kidneys

D. In scrotal sacs.

Answer: D

 [Watch Video Solution](#)

283. Sugar fructose is present in the secretion of

A. Prostate gland

B. Perineal gland

C. Cowper's gland

D. Seminal vesicles.

Answer: D

 [Watch Video Solution](#)

284. Spermatozoa are nourished during their development by

- A. Sertoli cells
- B. Interstitial cells
- C. Connective tissue cells
- D. None of the above.

Answer: A



Watch Video Solution

285. Testes in whale are

- A. Extra abdominal
- B. Half external, half internal
- C. Internal

D. None of the above.

Answer: C

 [Watch Video Solution](#)

286. Prostate gland is present in

A. On ureter

B. On kidney

C. On testis

D. Around urethra.

Answer: D

 [Watch Video Solution](#)

287. Prostate gland produces a secretion for

- A. Attracting sperms
- B. Stimulating sperm activity
- C. Inhibiting sperm activity
- D. None of the above.

Answer: B



Watch Video Solution

288. Corpus luteum is developed from:

- A. Oocyte
- B. Nephrostonme
- C. Ruptured Graffian Follicle

D. None of the above

Answer: C

 [Watch Video Solution](#)

289. Cells of germinal epithelium are

A. Cuboidal cells

B. Columnar cells

C. Squamous cells

D. Stratified cells.

Answer: A

 [Watch Video Solution](#)

290. Corpus luteum secretes

- A. LH
- B. Estrogen
- C. Progesterone
- D. FSH

Answer: C



Watch Video Solution

291. In case of non-fertilization, corpus luteum

- A. Stops secreting progesterone
- B. Changes to corpus albicans
- C. Starts producing progesterone

D. None of the above.

Answer: B

 [Watch Video Solution](#)

292. In apomictic/parthenogenetic development the individuals are

- A. Morphologically and genetically similar
- B. Morphologically and genetically different.
- C. Morphologically different but genetically similar
- D. None of the above.

Answer: A

 [Watch Video Solution](#)

293. Fimbriated funnel is found over

- A. Ureter
- B. Urinary bladder
- C. Uterus
- D. Fallopian tube.

Answer: D



Watch Video Solution

294. Failure of testes to descend into scrotum is

- A. Vasectomy
- B. Cryptorchidism
- C. Impotency

D. Tubectomy.

Answer: B

 [Watch Video Solution](#)

295. Sertoli cells are involved in :-

- A. Excretion
- B. Respiration
- C. Nutrition and morphogenesis of sperms
- D. All the above.

Answer: C

 [Watch Video Solution](#)

296. After ovulation, Graafian follicle forms

- A. Corpus luteum
- B. Corpus albicans
- C. Corpus artesia
- D. Corpus callosum.

Answer: A



Watch Video Solution

297. Secretion of progesterone by corpus luteum is initiated by

- A. MSH
- B. LH
- C. Testosterone

D. Thyroxine.

Answer: B

 [Watch Video Solution](#)

298. Graafian follicle of ovary secretes

A. Estrogen

B. Relaxin.

C. Progesterone

D. Cortisone.

Answer: A

 [Watch Video Solution](#)

299. Corpus luteum occurs in

- A. Uterus
- B. Oviduct
- C. Ovary
- D. Vagina.

Answer: C



Watch Video Solution

300. Fallopian tube is part of

- A. Uterus
- B. Ureter
- C. Vas deferens

D. Oviduct.

Answer: D

 [Watch Video Solution](#)

301. Seminal vesicles are located in

- A. Caput epididymis
- B. Uterus
- C. Above Cowper's gland
- D. Glans penis.

Answer: C

 [Watch Video Solution](#)

302. Cells of Leydig occur in

- A. Testis of Frog
- B. Kidney of Frog
- C. Kidney of Man
- D. Testis of Man.

Answer: D



Watch Video Solution

303. Number of eggs released in the life time of a woman is approximately

- A. 40
- B. 400

C. 4000

D. 20000

Answer: B

 [Watch Video Solution](#)

304. Correct hormonal sequence in the case of menstruation as

A. FSH,progesterone, estroen

B. Estrogen, FSH,progesterone

C. FSH,estrogen, progesterone

D. Estrogen,progesterone. FSH.

Answer: C

 [Watch Video Solution](#)

305. Cervix is a part:

- A. Kidney
- B. Fallopian tube
- C. Between uterus and vagina
- D. Epididymis.

Answer: C



Watch Video Solution

306. Graafian follicle contains

- A. Many oocytes
- B. Many sperms
- C. A single oocyte

D. Site for egg fertilisation.

Answer: C

 [Watch Video Solution](#)

307. The Mullerian duct in the female amniotes develops into:

- A. Ureter
- B. Urethra
- C. Sperm duct
- D. Oviduct.

Answer: D

 [Watch Video Solution](#)

308. Progesterone levels falls during :

- A. Gestation
- B. Menopause
- C. Lactation
- D. Mensturation.

Answer: B



Watch Video Solution

309. The head of the epididymis at the head of the testis is called

- A. Caput epididymis
- B. Cauda epididymis
- C. Vas deferens

D. Gubernaculum.

Answer: A

 [Watch Video Solution](#)

310. Human female reaches menopause at the age of about

A. 25 years

B. 35years

C. 50 years

D. 70 years.

Answer: C

 [Watch Video Solution](#)

311. Glands secreting male sex hormone are

- A. Leydig cells
- B. Seminiferous tubules
- C. Vasa deferentia
- D. Testis.

Answer: D

 [Watch Video Solution](#)

312. Estrogen is secreted by

- A. Corpus luteum
- B. Membranous granulosa of Graffian follicle.
- C. Germinal epithelium of ovary

D. Pituitary.

Answer: B

 [Watch Video Solution](#)

313. Which one is correct combination

- A. Haemoglobin-muscle contraction
- B. Sertoli cells-sperm nutrition
- C. Rods and cones-auditor reception
- D. Cochlea-eye.

Answer: B

 [Watch Video Solution](#)

314. Assertion: In a woman after hysterectomy (removal of uterus) the ovarian cycle is stopped.

Reason: Stoppage of FSH secretion.

A. A

B. B

C. C

D. D

Answer: B



Watch Video Solution

315. Immediately after ovulation, the mammalian egg is covered by a membrane known as

A. Plasma membrane

B. Vitelline membrane

C. Zona pellucida

D. All the above.

Answer: C



Watch Video Solution

316. Ovulation occurs in and on

A. 43687

B. 43813

C. 14-16

D. Last two days of menstrual cycle.

Answer: B



Watch Video Solution

 Watch Video Solution

317. Phase of menstrual cycle when ovulation occurs is

- A. Luteal
- B. Menstrual
- C. Proliferative secretory and menstrual
- D. Secretory.

Answer: C

 Watch Video Solution

318. Mammary glands are modified

- A. Sebaceous glands
- B. Seat glands

C. Meibomian glands

D. None of the above.

Answer: B

 [Watch Video Solution](#)

319. Antrum is the cavity of :

A. Ovary

B. Graffian follicle

C. Blastual

D. Gastrula.

Answer: B

 [Watch Video Solution](#)

320. Testes descent into scrotum in mammals for

- A. Spermatogenesis
- B. Fertilization
- C. Development of sex organs
- D. Development of visceral organ.

Answer: A



Watch Video Solution

321. Nereis has

- A. Stereoblastula
- B. Discoblastula
- C. Coeloblastula

D. Superficial blastula.

Answer: A

 [Watch Video Solution](#)

322. The process of formation of ova is called

- A. Ovulation
- B. Oogenesis
- C. Oviparity
- D. Oviposition.

Answer: B

 [Watch Video Solution](#)

323. The eggs of placental mammals are described as

- A. Homolecithal
- B. Alecithal
- C. Microlecithal
- D. Mesolecithal.

Answer: B



Watch Video Solution

324. Function of alantois is

- A. Respiration
- B. Excretion
- C. Nutrition and excretion

D. Protection from shock.

Answer: C

 [Watch Video Solution](#)

325. Free martin is an example of :

A. Hormonal control of sex

B. Sex reversal

C. Transformer gene

D. Nutritional control of sex.

Answer: A

 [Watch Video Solution](#)

326. Movement of sperm is due to

- A. Head
- B. Acrosome
- C. Middle piece
- D. Tail flagellum.

Answer: D



Watch Video Solution

327. What is true about cleavage in the fertilised egg in humans?

- A. Starts in uterus
- B. Is meroblastic
- C. Starts when egg is in fallopian tube

D. Is discoidal.

Answer: C

 [Watch Video Solution](#)

328. Egg with large amount of yolk is

A. Microlecithal

B. Mesolecithal

C. Oligolecithal

D. Macrolecithal.

Answer: D

 [Watch Video Solution](#)

329. Ectoderm forms

- A. Sweat glands
- B. Nervous system
- C. Lens of eye
- D. All the above.

Answer: D



Watch Video Solution

330. Polar body is produced during the formation of

- A. Sperm
- B. Secondary oocyte
- C. Oogonium

D. Spermatocytes.

Answer: B

 [Watch Video Solution](#)

331. The head of a mature sperm is mainly composed of :-

- A. An acrosome
- B. Elongated nucleus covered by acrosome
- C. Two centrioles and an axial filament
- D. Nucleus, acrosome, cytoplasm and mitochondrial shock.

Answer: B

 [Watch Video Solution](#)

332. Spermatogenesis involves

- A. Mitosis
- B. Meiosis
- C. Both A and B
- D. Metamorphosis.

Answer: C



Watch Video Solution

333. Vegetal hemisphere of Frog's egg has

- A. Germinal vesicle
- B. Yolk sac
- C. Pigment

D. Grey creacent.

Answer: B

 [Watch Video Solution](#)

334. Germinal layer formed from trophoblast of mammalian blastocyst is

A. Ectoderm

B. Endoderm

C. Mesoderm

D. None of the above.

Answer: D

 [Watch Video Solution](#)

335. Development which freed land vertebrates from water was

- A. Four appendages
- B. Four chambered heart
- C. Cleidoic egg
- D. Lungs.

Answer: C



Watch Video Solution

336. Grey crescent develops in

- A. Eye of Frog
- B. Fertilised egg of Frog
- C. Brain of Rabbit

D. Eye of Cockroach.

Answer: B

 [Watch Video Solution](#)

337. Mass separation of cells in embryo is

- A. Emboly
- B. Involution
- C. Delamination
- D. Epiboly.

Answer: C

 [Watch Video Solution](#)

338. What is true of deuterostomes?

- A. Presence of schizocoel
- B. Nonformation of anus from blastopore
- C. Coelum lined by mesoderm on both sides
- D. Absence of false coelom.

Answer: D



Watch Video Solution

339. Division of human egg is :

- A. Equal holoblastic
- B. Unequal holoblastic
- C. Superficial meroblastic

D. Discoidal meroblastic.

Answer: B

 [Watch Video Solution](#)

340. Mass of cells formed during early embryonic development of an animal is

A. Morula

B. Blastula

C. Amphiblastula

D. Gastrula.

Answer: A

 [Watch Video Solution](#)

341. Early embryonic stage that follows blastula is

A. Morula

B. Amphiblastula

C. Radula

D. Gastrula.

Answer: D



Watch Video Solution

342. Amnion surrounds

A. Allantois

B. Chorion

C. Embryo

D. Yolk sac.

Answer: C



Watch Video Solution

343. Given below are assertion and reason. Point out if both are true and the reason is correct explanation (A), both are true but reason is not correct explanation (B), assertion is true but reason is wrong (C) and both are wrong (D) Assertion: in morula stage cell divides without increase in size. Reason. Zona pellucida remains till cleavage is finished

A. A

B. B

C. C

D. D

Answer: B



Watch Video Solution

344. Meiosis during sperm formation of *Ascaris*, was first observed by

- A. Fleming
- B. Boveri
- C. Brauer
- D. De Vries

Answer: C



Watch Video Solution

345. Cortical granules are associated with

- A. Oogenesis
- B. Spermatogenesis
- C. Cleavage
- D. Fertilization.

Answer: D



Watch Video Solution

346. Intestine develops from

- A. Ectoderm
- B. Endoderm
- C. Mesoderm

D. Pharyngeal pouch.

Answer: B

 [Watch Video Solution](#)

347. Mosaic cleavage occurs in

A. Camel

B. Dog Fish

C. Whale

D. Echinococcus.

Answer: D

 [Watch Video Solution](#)

348. Egg of Cockroach is

- A. Alecithal
- B. Oligolecithal
- C. Microlecithal
- D. Centrolecithal

Answer: C



Watch Video Solution

349. Which one is correct

- A. Meiosis I occurs in primary spermatocyte
- B. Meiosis I occurs in secondary spermatocyte
- C. Meiosis I takes place in spermatids

D. Meiosis II occurs in spermatids.

Answer: A

 [Watch Video Solution](#)

350. Hyaluronidase is present in

- A. Ovary
- B. Ovum
- C. Sperm
- D. Blood.

Answer: C

 [Watch Video Solution](#)

351. An organ not formed from ectoderm is

- A. Optic nerve
- B. Middle ear
- C. Inner ear
- D. Skin.

Answer: B



Watch Video Solution

352. The morphogenetic movements change the hollow spherical blastula into a

- A. Gastrula
- B. Morula

C. Neurula

D. Embryonic disc

Answer: A



Watch Video Solution

353. Polar bodies develop during the formation of

A. Oogenesis

B. Spermstogenesis

C. Spermiogenesis

D. Somatic hybridisation.

Answer: A



Watch Video Solution

354. Select the correct statement

- A. Fishes, reptiles and amphibians
- B. Amphibians, birds and reptiles
- C. Birds, reptiles and mammals
- D. Amphibians, reptiles and mammals.

Answer: C



Watch Video Solution

355. Oocyte is liberated from ovary under the influence of LH, after completing

- A. Meiosis and before liberating polar bodies
- B. Meiosis I and before liberating polar bodies

C. Meiosis I/before completion of meiosis II

D. Meiosis I after release of polar body.

Answer: D

 [Watch Video Solution](#)

356. Noncleidic eggs occur in :

A. Birds

B. Fish

C. Reptiles

D. Platypus.

Answer: B

 [Watch Video Solution](#)

357. Haemoendothelial placenta occurs in

- A. Man and Ape
- B. Cow and Goat
- C. Deer and Camel
- D. Rat and Rabbit

Answer: D



Watch Video Solution

358. Which is incorrect regarding fertilisation

- A. Fertilisation occurs in fallopian tube
- B. Fertilisation is physico-chemical event
- C. Cleavage leads to increased mass of protoplasm

D. Cleavage produces morula.

Answer: C

 [Watch Video Solution](#)

359. Number of chromosomes in secondary oocyte stage in human is

A. 23

B. 46

C. 18

D. 20

Answer: A

 [Watch Video Solution](#)

360. Which organelle is absent in human sperms?

- A. Nucleus
- B. Mitochondria only
- C. Centriole only
- D. Endoplasmic reticulum.

Answer: D



Watch Video Solution

361. Jaw bones are formed from

- A. Ectoderm
- B. Endoderm
- C. Mesoderm

D. Ectoderm and endoderm.

Answer: C

 [Watch Video Solution](#)

362. In development of Frog gastrulation involves

- A. Epiboly
- B. Emboly
- C. Invagination and ingression
- D. All the above.

Answer: D

 [Watch Video Solution](#)

363. Thick layer which immediately surrounds the ovum is

- A. Zona pellucida
- B. Membrana granulosa
- C. Corona radiata
- D. Theca interna.

Answer: A



Watch Video Solution

364. Thick/follicular cells surrounding oocyte in Graffian follicle belong to

- A. Zona pellucida
- B. Corona radiata

C. Zona vesiculosa

D. Membrane granulosa.

Answer: B

 [Watch Video Solution](#)

365. Sperms are stored and nourished inside

A. Cowper's glands

B. Epididymis

C. Seminiferous tubules

D. Vasa efferentia.

Answer: B

 [Watch Video Solution](#)

366. When egg is not fertilized, yellow colored corpus luteum degenerates to form

- A. Corpus albicans
- B. Corpus callosum
- C. Corpora bigemina
- D. Corpora quadrigemina.

Answer: A



[Watch Video Solution](#)

367. Meroblastic cleavage is

- A. Total
- B. Spiral

C. Incomplete

D. Horizontal.

Answer: C



Watch Video Solution

368. Given below are assertion and reason. Point out if both are correct with reason being true explanation (A), both correct but reason is not true explanation (B), assertion correct Assertion upto ovulation oocyte has released one polar body. Reason, Released oocyte in the fallopian tube is in secondary metaphase stage.

A. A

B. B

C. C

D. D

Answer: A



Watch Video Solution

369. First or free milk is called:

- A. Colostrum
- B. Baby's milk
- C. Rostrum
- D. Cholesterol.

Answer: A



Watch Video Solution

370. Surgical removal of uterus is called

A. Tubectomy

B. Hysterctomy

C. Vasectomy

D. Orchidectomy.

Answer: B



Watch Video Solution

371. Tunica albuginea is related to

A. Liver

B. Lung

C. Spleen

D. Testes.

Answer: D



Watch Video Solution

372. Part of sperm that passes into ovum is

- A. Tail
- B. Acrosome
- C. Head
- D. Head, nect and middle piece.

Answer: D



Watch Video Solution

373. Which grouping has gestation period in decreasing order?

A. Cow, Horse,Goat ,Monkey and Swine pig.

B. Horse,Cow,Goat,Monkey and Swine

C. Moneky,Cow,Horse,Goat and Swine

D. Monkey,Horse,Goat,Cow and Swine.

Answer: B



Watch Video Solution

374. Cumulus oophorus represents

A. Heap of eggs

B. Heap of maturing follicle

C. Mass of cells in Graffian follicle

D. Mass of sperms embedded in Sertoli cells.

Answer: C

 [Watch Video Solution](#)

375. In higher animals blastopore generally forms

- A. Anus
- B. Mouth
- C. Liver
- D. Gut.

Answer: A

 [Watch Video Solution](#)

376. In deuterostomes second opening forms

- A. Anus
- B. Mouth
- C. Nose
- D. Both A and B

Answer: B

 [Watch Video Solution](#)

377. Cavity of gastrula is

- A. Coelom
- B. Blastocoel
- C. Archenteron
- D. Chorion.

Answer: C

 [Watch Video Solution](#)

378. Gastrulation comprises

- A. Morphogenetic movements
- B. Differentiation of archenteron
- C. Differentiation of three germ layers.
- D. All the above.

Answer: D

 [Watch Video Solution](#)

379. formation of organs is

A. Organogenesis

B. Neurogenesis

C. Mesogenesis

D. Notogenesis

Answer: A



Watch Video Solution

380. Secondary sexual characters in females

A. Relaxin

B. Progesterone

C. Estrogen

D. Gonadotropin.

Answer: C

 [Watch Video Solution](#)

381. Fixing up of blastocyst in the wall of the uterus is known as

- A. Impregnation
- B. Placentation
- C. Implanantion
- D. Fertilisation

Answer: C

 [Watch Video Solution](#)

382. Type of placenta present in humans/rodents is

A. Discoidal

B. Zonary

C. Difuse

D. Cotyledonary.

Answer: A



Watch Video Solution

383. The number of fetal membranes in a man is

A. 2

B. 3

C. 4

D. L

Answer: C



Watch Video Solution

384. Plaenta in human beings is formed by

- A. Amnion
- B. Allantois
- C. Choion
- D. All the above.

Answer: C



Watch Video Solution

385. Cleidoic eggs are characteristic of :

A. Insects

B. Fishes

C. Mammals

D. Reptiles and birds

Answer: D



Watch Video Solution

386. Mobility of mature sperm is controlled by mitochondria present in

A. Head

B. Middle piece

C. Tail

D. All the above.

Answer: B



Watch Video Solution

387. For the formation of 32 spermatide, meiotic division occurs in cells

A. 16

B. 8

C. 32

D. 4

Answer: B



Watch Video Solution

388. Two offsprings developed in the same uterus from the fertilization of two different ova are

- A. Monozygotic twins
- B. Dizygotic twins
- C. Fraternal twins
- D. Both B and C.

Answer: D



Watch Video Solution

389. The ganglia of sympathetic and the central nervous system in frog develops from the

- A. Neural cell

B. Neural plate cells

C. Notochord cells

D. Neural crest cells.

Answer: D



Watch Video Solution

390. Function of protein binding in acrosomal process is to

A. prevent polyspermy

B. Digest viteline layer

C. Ensure fertilisation of egg by a sperm of same species

D. Severe the sperm tail.

Answer: A



Watch Video Solution

 [Watch Video Solution](#)

391. In insect egg, cleavage is

- A. Equal holoblastic
- B. Unequal holoblastic
- C. Meroblastic superficial
- D. Meroblastic discoidal.

Answer: C

 [Watch Video Solution](#)

392. Which one is correct

- A. Cleavage follows gastrulation
- B. Yolk content of egg has no role in cleavage

C. Cleavage is repeated mitotic division of zygote

D. Gastrulation and blastulation follow each other.

Answer: B

 [Watch Video Solution](#)

393. In which mammals do the testes remain in the abdomen

A. Human

B. Elephant

C. Rabbit

D. Ox.

Answer: A

 [Watch Video Solution](#)

394. Progesterone is secreted by

- A. Corpus luteum
- B. Corpus albicans
- C. Corpus callosum
- D. Corpus straight

Answer: C



Watch Video Solution

395. Which is incorrect for human female ?

- A. Menstrual cycle takes 28 days
- B. Menopause occurs at 45-55 years
- C. Ovulated egg released during pregnancy

D. Menstruation takes 4 days.

Answer: D

 [Watch Video Solution](#)

396. Which of the following is correct about mammalia testes ?

- A. Graffian follicles, Sertoli cells, Leydig cells
- B. Graffian follicles, Sertoli cells and seminiferous tubules
- C. Graffian follicles, Leydig's cells and seminiferous tubules
- D. Sertoli cells, seminiferous tubules, Leydig cells.

Answer: C

 [Watch Video Solution](#)

397. Spermiogenesis/spermateleosis is formation of spermatozoa from

- A. Primary spermatocytes
- B. Secondary spermatocyte
- C. Spermatids
- D. Germinal cells of testes.

Answer: C



Watch Video Solution

398. Release of seminal fluid in the vagina of female is

- A. Ejaculation
- B. Implantation

C. Insemination

D. Copulation.

Answer: B

 [Watch Video Solution](#)

399. Cytoplasm surroundings mitochondria present in the middle piece of sperm is

A. Manchette

B. Microplasm

C. Centroplasm

D. Acrosome.

Answer: B

 [Watch Video Solution](#)

400. Sperm of animal species a cannot fertilise ovum of species b because

- A. Fertilizin of a and b are not compatible
- B. Antifertilizin of a and b are not compatible
- C. Fertilizin of a and antifertilizin of b are not compatible
- D. Antifertilizin of b are not compatible.

Answer: D



Watch Video Solution

401. Hormone responsible for ovulation and development of corpus luteum is

A. FSH

B. LH

C. LTH

D. ICSH.

Answer: B



Watch Video Solution

402. Hormone controlling human menstrual cycle is

A. Estrogen

B. FSH

C. LH

D. All the above.

Answer: D



Watch Video Solution

403. Which one is not associated with gametogenesis

- A. Formation of ova
- B. Formation of spermatids
- C. Release of ova
- D. Change of spermatid to spermatozoa

Answer: C



Watch Video Solution

404. Vitallogenesis occurs during the formation of

- A. Secodnary oocyte in fallopian tube
- B. Primary oocyte is Graffian follicle
- C. Primary spermatocyte in testis
- D. Secondary spermatocyte in testis

Answer: B



Watch Video Solution

405. Rearrangement of layers/morphogenetic movements occur during Gastrualtion

- A. Blastulation
- B. Morulation
- C. Organogenesis.
- D.

Answer: A

 [Watch Video Solution](#)

406. During cleavage. What is true about cells?

- A. Size of resulting cells decreases
- B. Size of resulting cells increases
- C. Size of early embryo increases
- D. Size of early embryo decreases

Answer: A

 [Watch Video Solution](#)

407. Production of sperms from spermatids is

- A. Spermiogenesis
- B. Spermatogenesis does not occur
- C. Oogenesis
- D. Gametogenesis.

Answer: A

 [Watch Video Solution](#)

408. In spermatogenesis, the phase of maturation involves

- A. Growth of spermatogonia into spermatocytes
- B. Formation of spermatogonia from gonocytes through mitosis
- C. Formation of spermatids from primary spermtocytes through meiosis

D. Formation of oogonia from spermatocytes through meiosis.

Answer: C

 [Watch Video Solution](#)

409. Sertoli cells are found in:-

- A. Between the seminiferous tubules
- B. In the germinal epithelium of ovary
- C. In the uppermost part of fallopian tube
- D. In the germinal spithelium of seminiferous tubules.

Answer: D

 [Watch Video Solution](#)

410. Bartholin glands are situated

- A. On the side of head of some amphibians
- B. At the reduced tail and of birds
- C. On either side of vagina in humans
- D. On either side of vas deferens in human. \

Answer: C



Watch Video Solution

411. both corpus luteum and macula lutea are

- A. Found in human ovaries
- B. Source of hormones
- C. Characterised by yellow colour

D. Contributory in maintaining pregnancy.

Answer: C

 [Watch Video Solution](#)

412. The phase of menstrual cycle in humans that last for 7-8 days, is

- A. Follicular phase
- B. Ovulatory phase
- C. Luteal phase
- D. Menstruation.

Answer: A

 [Watch Video Solution](#)

413. Which is correct about human embryonic development

- A. Cleavage increase in mass of protoplasm
- B. In the second division, one of the two blastomeres usually divides a little sooner than the second
- C. With more cleavage divisions the resultant blastomeres become larger and larger.
- D. Cleavage divisions result in hollow ball of cells called morula.

Answer: B



Watch Video Solution

414. Assertion: Holoblastic cleavage with almost equal sized blastomeres is a characteristic of placental animals.

Reason: Eggs of most mammals, including humans, are of centrolecithal type.

A. A

B. B

C. C

D. D

Answer: C



Watch Video Solution

415. Menstruation is caused by

A. Increase in FSH level

B. Fall in oxytocin level

C. Fall in progesterone level

D. Increase in oestrogen level.

Answer: C

 [Watch Video Solution](#)

416. Ball-like structure formed after completion of cleavage is

A. Blastula

B. Morula

C. Gastrula

D. Neural plate.

Answer: B

 [Watch Video Solution](#)

417. Fertilizin is

- A. Phospholipid
- B. Steroid
- C. Carbohydrate
- D. Glycoprotein.

Answer: D



Watch Video Solution

418. Which one occurs first in embryo

- A. Neurogenesis
- B. Notogenesis
- C. Heptogenesis

D. Cardiogenesis.

Answer: A

 [Watch Video Solution](#)

419. Stage of sperm before entry into ovum/s prefertilisation process is

- A. Maturation
- B. Insemination
- C. Capacitation
- D. Fertilization.

Answer: C

 [Watch Video Solution](#)

420. Sertoli cells are involved in

- A. Nourish sperms
- B. Form the sperms
- C. Help in fertilization
- D. Synthesise hormones.

Answer: A



Watch Video Solution

421. In ectopic pregnancy, fetus grows in

- A. Vagina
- B. Fallopian tube
- C. Uterus

D. Body cavity

Answer: B



Watch Video Solution

422. Inhibin is produced by

A. Corpus luteum

B. Testis

C. Placenta

D. All the above.

Answer: D



Watch Video Solution

423. The nutritive cells found in seminiferous tubules are

- A. Leydig cells
- B. Sertolic ells
- C. Atretic follicular cells
- D. Chromaffin cells.

Answer: B



Watch Video Solution

424. Trophoectoderm takes part in

- A. Protection of embryo
- B. Formation of ectoderm
- C. Formation of placenta

D. Drawing food for developing cells

Answer: C

 [Watch Video Solution](#)

425. Structure absent in Frog's testis is

- A. 1. Seminiferous tubules
- B. 2. Seminal vesicles
- C. 3. Sertoli cells
- D. 4. Interstitial cells.

Answer: C

 [Watch Video Solution](#)

426. Chromosome number is halved during

- A. Formation of first polar body
- B. Formation of second polar body
- C. Meiosis II
- D. Division of secondary oocyte.

Answer: A



Watch Video Solution

427. Ovulation in the human female normally takes place during the menstrual cycle

- A. At the end of proliferative phase
- B. In the middle of secretory phase

C. Just before the end of secretory phase

D. In the beginning of proliferative phase

Answer: A

 [Watch Video Solution](#)

428. The animal in which testis descent into scrotum only during breeding season

A. Frog

B. Kan garoo

C. Shrew

D. Bat.

Answer: D

 [Watch Video Solution](#)

429. Gametes are formed in animals from

- A. Muscular tissue
- B. Nervous tissue
- C. Connective tissue
- D. Epithelial tissue.

Answer: D



Watch Video Solution

430. Explain why the following reasoning is wrong :

“The Sun attracts all bodies on the Earth. At mid-night, when the sun is directly below, it pulls on an object in the same direction as the pull of the Earth on that object, at noon, when the Sun is

directly above, it pulls on an object in a direction opposite to the pull of the Earth, Hence all objects should be heavier at mid-night (or night) than they are at noon (or day).”

- A. Relaxin
- B. Oxytocin
- C. Progesterone
- D. Oestrogen

Answer: D

 [Watch Video Solution](#)

431. Assertion: From evolutionary point of view, human gestation period is believed to the shortening

Reason: One major evolutionary trend in humans has been larger head undergoing faster growth rate in the foetal stage.

A. A

B. B

C. C

D. D

Answer: A



Watch Video Solution

432. Neubenkern is part of

A. Human ovum

B. Human sperm

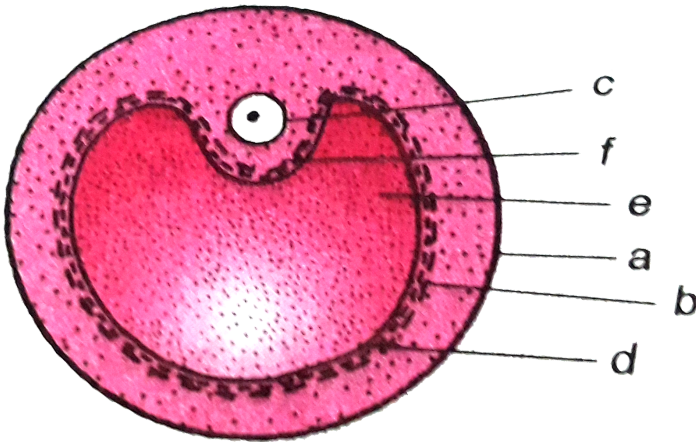
C. Foetus

D. Graafian follicle.

Answer: B

 Watch Video Solution

433. In the diagram of section of Graafian follicle. Different parts are indicated by alphabeta. Choose the correct combination



A. a-membrana granulosa, b-theca interna,c-ovum,d-cumulus oophorus, e-antrum,f-theca externa.

B. a-theca externa, b-theca interna, c-ovum d-membrana granulosa,e-antrum,f-cumulus oophorus

C. a-theca externa, b-theca interna, c-ovum, d-cumulus oophorus, e-antrum,f-membrana granulosa

D. a-membrana granulosa,b-theca externa,c-ovum,d-cumulus oophorus,e-antrum,f-theca interna.

Answer: B



[Watch Video Solution](#)

434. Which is not mesodermal in origin

A. Circulatory system

B. Nervous system

C. Muscular system

D. Skeleton tissue.

Answer: B

 [Watch Video Solution](#)

435. Coelom is cavity found between

- A. Splitted mesoderm
- B. Ectoderm and endoderm
- C. Ectoderm and mesoderm
- D. Body wall and mesoderm

Answer: A

 [Watch Video Solution](#)

436. The cellular layer that disintegrates and regenerates again and again in human skin is:

- A. Endometrium of uterus
- B. dermis of skin
- C. Cornea of eye
- D. Endothelium of blood vessels.

Answer: A



[Watch Video Solution](#)

437. Testosterone is secreted by

- A. Sertoli cells
- B. Leydig/interstitial cells

C. Seminiferous cells

D. All the above.

Answer: B

 [Watch Video Solution](#)

438. Which organelle is absent in human sperms?

A. Mitochondria

B. Nucleus

C. Centriole only

D. E.R.

Answer: D

 [Watch Video Solution](#)

439. Development of animal embryo from egg without fertilization is called :

- A. Parthenocarpy
- B. Parthenogenesis
- C. Apospory
- D. Apomixis.

Answer: B



Watch Video Solution

440. A cell formed from cleavage is called

- A. Blastomere
- B. Blastopore

C. Blastula

D. Morula.

Answer: A

 [Watch Video Solution](#)

441. Stage of embryo development at which h implanatation occurs in human female is

A. Morula

B. Zygote

C. Blastocyst

D. Neurula.

Answer: C

 [Watch Video Solution](#)

442. Leydig cells produce:

- A. Nourishment of sperms
- B. Provide motility to sperms
- C. Bring about maturation of sperms
- D. Synthesis of testosterone Androgens.

Answer: D



Watch Video Solution

443. Which is wrong about oogenesis?

- A. Unequal meiotic division
- B. Growth phase

C. Formation of polar bodies

D. Equal meiotic division

Answer: D

 [Watch Video Solution](#)

444. Gastrulation is

A. Cleavage of zygote

B. Formation of trophoblast

C. Morphogenetic movement

D. Gamete formation

Answer: C

 [Watch Video Solution](#)

445. Sertoli cells are involved in :-

- A. Secretory cells
- B. respiratory cells
- C. Excretory cells
- D. Nurse cells.

Answer: D

 [Watch Video Solution](#)

446. Which of the following does not occur between 15-28 day of menstrual cycle ?

- A. Premenstrual phase
- B. Lutueal phase

C. Secretory phase

D. Proliferative phase.

Answer: D

 [Watch Video Solution](#)

447. Pattern of cleavage in egg of Frog is

A. Meroblastic

B. Holoblastic unequal

C. Holoblastic equal

D. All the above.

Answer: B

 [Watch Video Solution](#)

448. During embryonic development, the establishment of polarity along anterior/posterior, dorsal/ventral or medial/lateral axis is called : -

- A. Anamorphosis
- B. Organiser phenomenon
- C. Pattern formation
- D. Axis formation.

Answer: C



Watch Video Solution

449. In the urinogenital system, one of the following part is present in males and not in females :

- A. Urethra

B. Fallopian tube

C. Vagina

D. Vas deferena.

Answer: D



Watch Video Solution

450. Number of sperms formed from four spermatocytes is

A. 4

B. 1

C. 16

D. 32

Answer: C



Watch Video Solution

451. Fertilization was discovered by

- A. Strasburger
- B. Robert Brown
- C. Lamarck
- D. Darwin.

Answer: A

 Watch Video Solution

452. Function of prostate gland is

- A. Storage of semen
- B. Provide motility to sperms

C. Formation of semen

D. Release of hormones.

Answer: B

 [Watch Video Solution](#)

453. Preganacy begins with implanatation of

A. Embryo

B. Fertilized ovum

C. Blastopore

D. Blastocyst.

Answer: D

 [Watch Video Solution](#)

454. Menstrual cycle occurs in

- A. Human females
- B. Mammalian females
- C. Primate females
- D. Rabbit.

Answer: B



Watch Video Solution

455. Ovulation is caused by

- (a) Oestrogen
- (b) Oestrogen and progesterone
- (c) FSH and oestrogen
- (d) FSH and LH

- A. Oestrogen
- B. Oestrogen and progesterone
- C. FSH and oestrogen
- D. FSH and LH.

Answer: D

 [Watch Video Solution](#)

456. Acrosome of sperm contains

- A. Hyaluronidase and acrosin
- B. Hyaluronic acid and acrosin
- C. Hippuric acid and uric acid
- D. Creatinine.

Answer: A



Watch Video Solution

457. Attachment of foetus to placenta occurs through

- (a) Chorda mesoderm
- (b) Spinal cord
- (c) Umbilical cord
- (d) Notochord

A. Chorda mesoderm

B. Spinal cord

C. Umbilical cord

D. Notochord.

Answer: C



Watch Video Solution

458. Which type of blastula occurs in Frog?

- (a) Steroblastula
- (b) Coeloblastula
- (c) Holoblastula
- (d) Amphiblastula

A. Steroblastula

B. Coeloblastula

C. Holoblastula

D. Amphiblastula.

Answer: B



Watch Video Solution

459. Some mature cells cannot undergo division because

- (a) Their genes have become inactive
- (b) They lack centrioles
- (c) They have taken up specific function and undergone differentiation
- (d) They have lost the ability to divide

A. Their genes have become inactive

B. They lack centrioles

C. They have taken up specific function and undergone differentiation

D. They have lost the ability to divide.

Answer: C



Watch Video Solution

460. Which one causes ovulation?

- (a) ADH
- (b) FSH
- (c) Thyroxine
- (d) LH

A. ADH

B. FSH

C. Throxine

D. LH.

Answer: D



Watch Video Solution

461. Grey crescent is

- A. Melanin rich area formed at the region opposite to entry of sperm
- B. Yolk rich area of egg
- C. Laying of sperms and eggs in Frog.
- D. None of these

Answer: B



Watch Video Solution

462. Fusion of male pronucleus with female pronucleus is

- A. Amphimixis
- B. Conjugation
- C. Penetration
- D. Transduction.

Answer: A



Watch Video Solution

463. Macrolecithal eggs are characterised by

- (a) Little yolk
- (b) Abundant yolk
- (c) Entry of sperm
- (d) Pattern of cleavage

A. Little yolk

B. Abundant yolk

C. Entry of sperm

D. Pattern of cleavage.

Answer: B



Watch Video Solution

464. During development which of the following organs is formed first

- (a) Heart
- (b) Brain
- (c) Neural tube
- (d) Skin

- A. Heart
- B. Brain
- C. Neural tube
- D. Skin.

Answer: C



Watch Video Solution

465. Which of the following is correct sequence in embryo development?

- (a) Cleavage, gastrulation, blastulation
- (b) Blastulation, cleavage, gastrulation
- (c) Cleavage,blastulation, gastrulation
- (d) Gastrulation,blastulation,cleavage

- A. Cleavage, gastrualtion, blastulation
- B. Blastulation, cleavage, gastrulation
- C. Cleavage,blastulation, gastrulation
- D. Gastrulation,blastulation,cleavage.

Answer: C



Watch Video Solution

466. In human females, ova are produced in

- A. Ovarian follicles
- B. Oviduct
- C. Uterus
- D. Vagina

Answer: A



Watch Video Solution

467. Hormone that prepares and maintains the uterus during pregnancy is produced by

- A. Corpus albicans
- B. Corpus luteum

C. Graafian follicles

D. Corpora Cardiaca.

Answer: B



Watch Video Solution

468. After menopause there is a rise in urinary excretion of

A. FSH

B. STH

C. MSH

D. LH.

Answer: A



Watch Video Solution

469. Delivery of developed foetus is

- A. Ovulation
- B. Oviposition
- C. Parturition
- D. Abortion.

Answer: C



Watch Video Solution

470. Abnormal condition when mammae of man become female like

- A. Feminisation
- B. Gynochorium

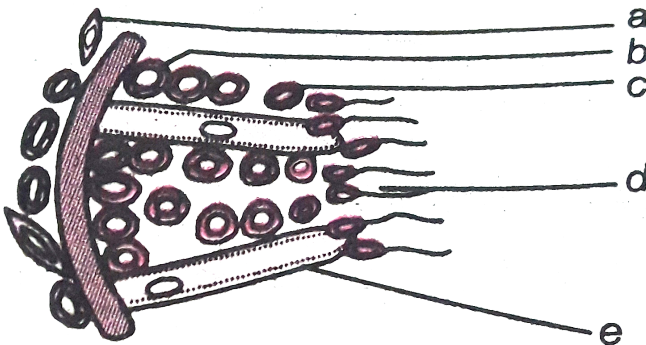
C. Gynoesism

D. Gynaecomastia.

Answer: D

 Watch Video Solution

471. Mark the correct labelling for part of seminiferous tubule.



 Watch Video Solution

472. Which is not formed by Wolffian duct?

- A. Epididymis
- B. Vas deferens
- C. Ejaculatory duct
- D. Oviduct.

Answer: D



[Watch Video Solution](#)

473. What is the correct observation regarding size of egg, blastula and gastrula?

- (a) There is progressive increase in size from zygote to blastula to gastrula
- (b) All the three are of same size
- (c) Zygote is small while blastula and gastrula are larger
- (d) Gastrula is larger while zygote and blastula are of same size

- A. There is progressive increase in size from zygote to blastula to gastrula
- B. All the three are of same size
- C. Zygote is small while blastula and gastrula are larger
- D. Gastrula is larger while zygote and blastula are of same size.

Answer: A

 [Watch Video Solution](#)

474. Which are derivatives of endoderm?

- A. Muscles and blood
- B. Alimentary canal and respiratory organs
- C. Excretory and reproduction organs
- D. Skin and nerve cord.

Answer: B



Watch Video Solution

475. Which are haploid?

- A. Spermatogonial cells
- B. Germinal epithelial cells
- C. Secondary spermatocytes
- D. Primary spermatocytes.

Answer: C



Watch Video Solution

476. Sertoli cells secrete a hormone

A. Gonadotropin

B. Testosterone

C. Relaxin

D. Inhibin.

Answer: D

 [Watch Video Solution](#)

477. If a germ cell in a female gonad and a germ cell in a male gonad begin undergoing meiosis simultaneously, what will be the ratio of ova and sperms produced?

A. 1 : 1

B. 1 : 2

C. 1 : 4

D. 2:1

Answer: C

 Watch Video Solution

478. Match the columns and find the correct combinations

<i>Column I</i>		<i>Column II</i>	
(a)	Hyaluronidase	(i)	Acrosomal reaction
(b)	Corpus luteum	(ii)	Morphogenetic movements
(c)	Gastrulation	(iii)	Progesterone
(d)	Capacitation	(iv)	Mammary glands
(e)	Colostrum	(v)	Sperm activation

A. a-vb-ii,c-iv,d-I,e-iii

B. a-I,b-iii,c-ii,d-v,e-iv

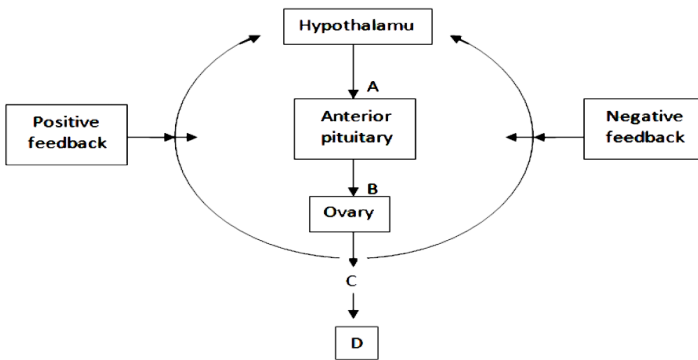
C. a-iii,b-ii,c-v,d-iv,e-i

D. a-iv,b-ii,c-v,d-iii,e-i

Answer: B

 Watch Video Solution

479. Choose the correct combination of labelling that depicts the hormonal control of the female reproductive system .



- A. a-Gn RH,b-LTH,c-estrogen,d-uterus
- B. a-GnRH,b -ACTH,c-LH,d-uterus
- C. a-GnRH,b-STH,c-LH,d-uterus
- D. a-GnRH,b -LH/FSH,c-estrogen,d-uterus.

Answer: D

 [Watch Video Solution](#)

480. If mammalian ovum fails to get fertilised, which one of the following is unlikely?

- A. Corpus luteum will disintegrate
- B. Primary follicle starts developing
- C. Progesterone secretion rapidly declines
- D. Estrogen secretion further decreases.

Answer: B

 [Watch Video Solution](#)

481. Grey crescent is the area -

- A. At the point of entry of sperm into ovum
- B. At the animal pole
- C. Just opposite the site of entry of sperms into ovum
- D. At the vegetal pole.

Answer: C



Watch Video Solution

482. Given below are assertion and reason. In humans the gamete contributed by the male determines whether the child produced will be male or female.

Reason. Sex in humans is polygenic trait dependent upon the cumulative effect of some genes on X-chromosome and some on Y-

chromosome. Point out if both are true with reason being correct explanation (A). Both are true but reason is not correct explanation (B), assertion is true but reason is wrong (C) and both are wrong (D). Assertion .

A. A

B. B

C. C

D. D

Answer: C



Watch Video Solution

483. Which is correctly matched in a normal menstrual cycle ?

A. Endometrium regenerates -5 to 10 days

B. Release of egg-5th day

C. Endometrium secretes nutrients for implanatation -11 to 18 days

D. Rise in progesterone level -1 to 15 days.

Answer: A

 [Watch Video Solution](#)

484. A cross section at the midpoint of the middle piece of a human sperm will show

A. Centriole, mitochondria, 9+2 arrangement of microtubules

B. Centriole and mitochondria

C. Mitochondria and 9+2 arrangement of microtubules

D. 9+2 arrangement of microtubules only.

Answer: C



Watch Video Solution

485. Which of the following is immortal?

- (a) Somatic cell
- (b) Germ cell
- (c) Glomerular cell
- (d) Cells of pituitary

A. Somatic cell

B. Germ cell

C. Glomerular cell

D. Cells of pituitary.

Answer: B



Watch Video Solution

486. Extra structure that provides nutrition to embryo is

- (a) Umbilicus
- (b) Amnion
- (c) Chorion
- (d) Placenta

A. Umbilicus

B. Amnion

C. Chorion

D. Placenta.

Answer: D



Watch Video Solution

487. Spermatogenesis is formation of

- A. Ovary
- B. Ovum
- C. Sperm
- D. Zygote.

Answer: C



Watch Video Solution

488. Spermatogonia develop through division

- A. Amitosis
- B. Mitosis
- C. Meiosis I

D. Meiosis II.

Answer: B



Watch Video Solution

489. Graffian follicles occur in

(a) Ovary

(b) Testis

(c) Egg

(d) Sperm

A. Ovary

B. Testis

C. Egg

D. Sperm.

Answer: A



Watch Video Solution

490. Monozygotic twins develops from

- (a) Different zygotes
- (b) Different ova
- (c) Different sperms
- (d) Same zygote

- A. Different zygotes
- B. Different ova
- C. Different sperms
- D. Same zygote.

Answer: D



Watch Video Solution

491. Ovulation occurs in and on

- A. Ovary
- B. About 14th day
- C. Both A and B
- D. None of these

Answer: C



Watch Video Solution

492. Low level of progesterone and estrogen in blood stimulate

- A. FSH-RH
- B. LH

C. GH

D. All the above

Answer: A

 [Watch Video Solution](#)

493. Due to presence of large amount of yolk. Zygote divides into two incomplete halves. This type of cleavage does not occur in

A. Peacock, Duck-billed platypus and crocodile.

B. Jungle Fowl, Dove and Duck

C. Amphioxus, Salamander and Rana

D. Hemidactylus, Calotes and Varanus

Answer: C

 [Watch Video Solution](#)

494. Due to presence of large amount of yolk. Zygote divides into two incomplete halves. This type of cleavage does not occur in

- A. Peacock, Duck-billed platypus and crocodile.
- B. Jungle. Fowl, Dove and Duck
- C. Formation of three germinal layers
- D. Formation of archenteron.

Answer: B

 [Watch Video Solution](#)

495. Withdrawal of which of the following hormones is the immediate cause of menstruation ?

A. Estrogen

B. FSH

C. FSH-RH

D. Progesterone

Answer: D



Watch Video Solution

496. Blastopore occurs in

A. Gastrula

B. Blastula

C. Blastocoel

D. Morula.

Answer: A



Watch Video Solution

497. Mesoderm is formed through invagination of

- A. Ectoderm
- B. Endoderm
- C. Inner mass of cells
- D. Primitive streak.

Answer: D



Watch Video Solution

498. Secretion of which structure prepares the inner wall of uterus for implantation?

- A. Ovary
- B. Corpus luteum
- C. Pituitary gland
- D. Ovarian follicle.

Answer: B



[Watch Video Solution](#)

499. Which secretions are produced by spermatozoa at the time of fertilization

- A. Fertilizin and spermlysin

- B. Only spermlysin
- C. Fertilizin and antifertilizin
- D. Antifertilizin and spermlysin.

Answer: D

 [Watch Video Solution](#)

500. Which represents a condition of higher reduced motility

- A. Azospermia
- B. Polyspermy
- C. Oligospermia
- D. Asthenospermia.

Answer: D

 [Watch Video Solution](#)

501. Oxytocin is helpful in

- A. Semen formation
- B. Diuresis
- C. Molecular development.
- D. None of these

Answer: B

 Watch Video Solution

502. Ectoderm forms

- A. Bones and muscles
- B. Lining of gut and respiratory organs

C. Enamel of teeth and cornea of eye

D. Gonads and blood vessels.

Answer: C

 [Watch Video Solution](#)

503. State: what type of a parasite is Mistletoe

 [Watch Video Solution](#)

504. In organisms, shape of foetus is determined by

- (a) Organogenesis
- (b) Blastula
- (c) Morphogenesis
- (d) Reproduction

A. Organogenesis

B. Blastula

C. Morphogenesis

D. Reproduction.

Answer: C



Watch Video Solution

505. Energy center of sperm is

A. Head

B. Middle piece

C. Entire sperm

D. Tail.

Answer: B



Watch Video Solution

506. Fusion of sperm and ovum is

A. Amphimixis

B. Regeneratin

C. Fertilization → Cleavage → Zygote → Blastula →
Gastrula.

D. None of the above.

Answer: C



Watch Video Solution

507. Embryonic connective tissue is formed from

- (a) Ectoderm
- (b) Endoderm
- (c) Mesenchyma
- (d) Mesoglea

A. Ectoderm

B. Endoderm

C. Mesenchyma

D. Mesogloes.

Answer: C



Watch Video Solution

508. Embryo at 16-celled stage is called

A. Morula

B. Blastula

C. Blastomere

D. Gastrula.

Answer: A



Watch Video Solution

509. Corpus luteum produces

A. Lutenizing hormone

B. Progesterone

C. Luteotrophic hormone

D. Inhibin.

Answer: B



Watch Video Solution

510. Process of maturation and development of sperms is

- (a) Spermatogenesis
- (b) Spermiogenesis
- (c) Oogenesis
- (d) Spermiation

A. Spermatogenesis

B. Spermiogenesis

C. Oogenesis

D. Spermiation.

Answer: A



Watch Video Solution

511. Which one is wrong

- A. Amnion is the outer layer containing amniotic fluid that acts as a shock absorber for soft embryo
- B. Amnion and chorion develop as upward projecting folds of somatopleure called amniotic folds
- C. Yolk sac is a foetal membrane that helps in nourishment of embryo in general
- D. Chorio-allantoic membrane develops villi and contributes much to the development of placenta.

Answer: B



Watch Video Solution

512. With the disintegration of corpus luteum, a decrease in the secretion of ___ hormone occurs.

A. LTH

B. FSH

C. Progesterone

D. LH.

Answer: D

 [Watch Video Solution](#)

513. Which one holds corona radiata?

A. Muscopolysaccharide

B. Oligosaccharide

C. Lipolysaccharide

D. Lipoprotein.

Answer: A



Watch Video Solution

514. A protective layer around testis is

A. Tunica adventitia

B. Tunica vasculosa

C. Tunica media

D. Tunica albuginea.

Answer: D



Watch Video Solution

515. Sperm capacitation involves:

- A. Change in shape
- B. Release of mitochondria
- C. Removal of membrane fatty acids
- D. Hyaluronic acid.

Answer: C



Watch Video Solution

516. Which accessory genital gland occurs only in mammalian male?

- A. Cowper's gland
- B. Bartholin gland

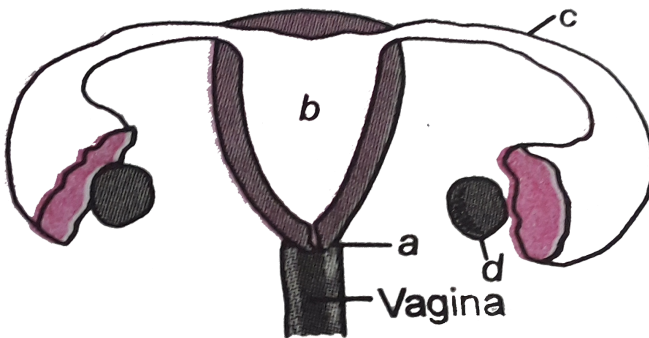
C. Perineal gland

D. Prostate gland.

Answer: D

 [Watch Video Solution](#)

517. Identify correctly



A. a-uterus, b-uterine cavity, c-oviduct, d-ovary

B. a-cervix, b-uterine cavity, c-fallopian tube, d-ovary

C. a-oviduct, b-uterus, c-oviduct, d-ovary

D. a-cervix,b-uterus,c-ovary,d-tumor.

Answer: B

 [Watch Video Solution](#)

518. Extrusion of second polar body from egg nucleus occurs

- A. After entry of sperm
- B. After fertilization
- C. Before sperm entry
- D. With no relation to sperm entry.

Answer: A

 [Watch Video Solution](#)

519. Cell division that occurs in zygote is called

- A. Meiosis
- B. Mitosis
- C. Cleavage
- D. Differentiation.

Answer: C



Watch Video Solution

520. Layers of an ovum from outside to inside is

- A. Corona radiata, zona pellucida, vitelline membrane.
- B. Zona pellucida, corona radiata, vitelline membrane
- C. Vitelline membrane, zona pellucida, corona radiata

D. Zona pellucida, vitelline membrane, corona radiata.

Answer: A

 [Watch Video Solution](#)

521. Which layer of embryo is formed first

- A. Ectoderm
- B. Mesoderm
- C. Endoderm
- D. Both B and C.

Answer: C

 [Watch Video Solution](#)

522. LH surge occurs during phase of menstrual cycle

- (a) Menstrual phase
- (b) Beginning of proliferation phase
- (c) Just before end of proliferation phase
- (d) At the middle of the cycle

A. Menstrual phase

B. Beginning of proliferative phase.

C. Just before end of proliferation phase

D. At the middle of the cycle.

Answer: D



Watch Video Solution

523. In which phase of cell division are oogonia arrested

- (A) Anaphase II
- (B) Anaphase I
- (C) Interphase
- (D) Both A and B

A. Anaphase II

B. Anaphase I

C. Interphase

D. Both A and B

Answer: B



Watch Video Solution

524. Capacitation of sperm occurs in

A. Female genital tract

B. Vagina

C. Vas efferene

D. Vas deferens.

Answer: A



Watch Video Solution

525. Fertilization of ovum occurs in

A. Fimbriae of oviduct

B. Isthmus of oviduct

C. Ampulla of oviduct

D. None of the above.

Answer: C

 [Watch Video Solution](#)

526. Which of the following controls the function of Sertoli cells ?

- A. Estrogen
- B. FSH
- C. Testosterone
- D. ACTH.

Answer: B

 [Watch Video Solution](#)

527. Which part of ovary in mammals acts as an endocrine gland after ovulation?

- A. Stroma
- B. Vitelline membrane
- C. Germinal epithelium
- D. Graafian follicle.

Answer: D



Watch Video Solution

528. Corpus spongiosum occurs in

- A. Ovary
- B. Penis

C. Testis

D. Uterine wall.

Answer: B



Watch Video Solution

529. Cytoplasm of ovum doesnot contain

A. Golgi complex

B. Mitochondria only

C. Centrosome

D. Ribosomes.

Answer: C



Watch Video Solution

530. Which one takes part in formation of placenta?

- (a) Only trophoblast
- (b) Only allantois
- (c) Trophoblast and mesoderm
- (d) Trophoblast, mesoderm and allantois

A. Only trophoblast

B. Only allantois

C. Trophoblast and mesoderm

D. Trophoblast, mesoderm and allantois.

Answer: D



Watch Video Solution

531. Match the columns and find the correct combination

Column I		Column II	
a. Oxytocin	<i>p</i>	Stimulates ovulation	
b. Prolactin	<i>q</i>	Implantation and maintenance of pregnancy	
c. Luteinising hormone	<i>r</i>	Lactation after child birth	
d. Progesterone	<i>s</i>	Uterine contraction during labour	
	<i>t</i>	Reabsorption of water by nephrons	

A. a-s,b-r,c-p,d-q

B. a-t,b-r,c-p,d-e

C. a-sb-q,c-r,d-t

D. a-t,b-p,c-s,d-r.

Answer: A



Watch Video Solution

532. Notochord, skeletal system and dermis of the skin are the derivatives of

- A. Mesoderm
- B. Endoderm
- C. Ectodermq
- D. All the above.

Answer: A

 [Watch Video Solution](#)

533. During embryogenesis archenteron is preceded by

- (a) Blastulation
- (b) Neuralation

(c) Gastrulation

(d) Implantation

A. Blastulation

B. Neuralation

C. Gastrulation

D. Implanatation

Answer: C



Watch Video Solution

534. Eggs produced in a year by an ovary of nonpregnant woman is

A. 12

B. 6

C. 24

D. 48

Answer: B

 [Watch Video Solution](#)

535. Sperms are produced in

- A. vas deferens
- B. Interstitial cells
- C. Prostate gland
- D. Seminiferous tubules.

Answer: D

 [Watch Video Solution](#)

536. In oogenesis, egg is fertilised by sperm at which stage?

- A. Primary oocyte
- B. Secondary oocyte
- C. Oogonium
- D. Ovum.

Answer: B



Watch Video Solution

537. Find the correct options

- A. Testosterone influences male secondary sexual characters
- B. Gestation period in Rabbit is about 276 days
- C. Bulbourethral gland secretes a vaginal lubricant

D. Placenta secretes estrogen.

Answer: C

 [Watch Video Solution](#)

538. Which one of the following statements is incorrect about menstruation?

- A. At menopause, there is abrupt increase in gonadotropic hormones
- B. Beginning of cycle of menstruation is called menarche
- C. During normal menstruation about 40mL of blood is lost
- D. Menstrual fluid can easily clot.

Answer: D

 [Watch Video Solution](#)

539. Acrosomal reaction of the sperm occurs due to

- A. Capacitation
- B. Release of lysin
- C. Release of fertilizin
- D. Influx of Na^+

Answer: C



Watch Video Solution

540. Which extraembryonic membrane in humans prevents desiccation of the embryo inside the uterus?

- A. Yolk one

B. Amnion

C. Chorion

D. Allantois.

Answer: B



Watch Video Solution

541. Which protects the embryo from external injury

A. Amnion

B. Allantois

C. Chorion

D. Yolk sac.

Answer: A



Watch Video Solution

542. Lutenising hormone is

- A. Lactotropic
- B. Mammatropic
- C. Non-mammatropic
- D. Both A and B

Answer: C

 Watch Video Solution

543. Level of estrogen and progesterone are minimum at the time of

- (a) Follicular phase
- (b) Ovulation

(c) Secretory phase

(d) Onset of menstrual phase

A. Follicular phase

B. Ovulation

C. Secretory phase

D. Onset of menstrual phase.

Answer: D



Watch Video Solution

544. Proximal centriole of sperm is found in

A. Head

B. Neck

C. Middle piece

D. Tail.

Answer: B



Watch Video Solution

545. Which provides nutrition to maturing sperms?

A. Leydig cells

B. Scrotum

C. Epididymis

D. Sertoli cells.

Answer: D



Watch Video Solution

546. Extra structure that provides nutrition to embryo is

- (a) Umbilicus
- (b) Amnion
- (c) Chorion
- (d) Placenta

A. Umbilicus

B. Chorion

C. Placenta

D. Amnion.

Answer: C



Watch Video Solution

547. Pick up the correct information about menstrual cycle control

A. Estrogen and progesterone of ovary

B. FSH of pituitary

C. FSH and LH pituitary

D. Oxytocin.

Answer: D



Watch Video Solution

548. Pick up correct statement about organs with dual origin from embryonic layers.

1. Hypophysis 2. Adrenal glands

3. Sence organs 4. Pancreas.

A. 1) 1,2,3 correct

B. 2) 1,2 correct

C. 3) 2,4 correct

D. 4) 1,3 correct.

Answer: A

 [Watch Video Solution](#)

549. Which hormone level reaches peak during luteal phase of menstrual cycle?

- (a) Luteinising hormone
- (b) Progesterone
- (c) Follicle stimulating hormone
- (d) Estrogen

A. Luteinising hormone

B. Progesterone

C. Pollicle stimulating hormone

D. Estrogen.

Answer: B



Watch Video Solution

550. Some important events in the human female reproductive cycle are given below. Arrange the events in a proper sequence

A- Secretion of FSH,

B- Growth of corpus luteum,

C- Growth of the follicle and oogenesis,

D-ovulation,

E. sudden increase in the levels of LH

A. $a \rightarrow c \rightarrow e \rightarrow d \rightarrow b$

B. $c \rightarrow a \rightarrow d \rightarrow b \rightarrow e$

C. $a \rightarrow d \rightarrow c \rightarrow e \rightarrow b$

D. $b \rightarrow a \rightarrow c \rightarrow d \rightarrow e$.

Answer: A



[Watch Video Solution](#)

551. Which one of the following is initiated by secretions of trophoblast?

- (a) Blastulation
- (b) Implantation
- (c) Cleavage
- (d) Gastrulation

A. Blastulation

B. Implantation

C. Cleavage

D. Gastrulation

Answer: B

 [Watch Video Solution](#)

552. Foetal ejection reflex in human female is induced by

- A. Release of oxytocin from pituitary
- B. Pressure exerted by amniotic fluid
- C. Differentiation of mammary glands
- D. Fully developed foetus and placenta.

Answer: D

 [Watch Video Solution](#)

553. Which is correctly matched?

- A. Menstruation. Breakdown of myometrium and ovum and fertilised.
- B. Ovulation LH and FSH attain peak level, sharp fall in secretion of progesterone
- C. Development of Corus luteum Secretory phase and increased secretion of progesterone.
- D. Proliferative phase. Rapid regeneration of myometrium and maturation of Graafian follicle.

Answer: C

 [Watch Video Solution](#)

554. A regular cycling woman is not menstruating which one of the following is the most likely root cause of this?

- A. Fertilisation of ovum
- B. Maintenance of hypertrophical endometrial lining.
- C. Maintenance of high titre of sex hormones
- D. Retention of well developed corpus luteum.

Answer: A

 [Watch Video Solution](#)

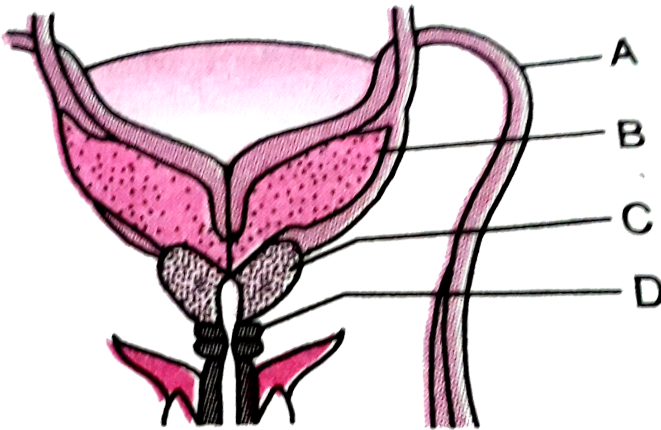
555. Seminal plasma in humans is rich in

- A. Fructose and certain enzymes, poor in Ca^{2+}
- B. Fructose, Ca^{2+} and certain enzymes
- C. Fructose Ca^{2+} but no enzymes
- D. Glucose, certain enzymes but on Ca^{2+}

Answer: B

 Watch Video Solution

556. Select the correct set of names for the parts A,B,C,D



	A	B	C	D
(A)	Ureter	Seminal vesicle	Prostate	Bulbourethral gland
(B)	Ureter	Prostate	Seminal vesicle	Bulbourethral gland
(C)	Vas deferens	Seminal vesicle	Prostate	Bulbourethral gland
(D)	Vas deferens	Seminal vesicle	Bulbourethral gland	Prostate

A. *A* *B* *C* *D*
Ureter Seminal Prostate Bulbourethral gland

B. *A* *B* *C* *D*
Ureter Prostate Seminal verticle Bulbourethral gland

C.

A *B* *C* *D*
Vas deferens Seminal vesicle Prostate Bulbourebral gland

D. $\{(A,B,C,D), ("Vas \text{ deferens}", "Seminal \text{ vesicle}", "Bulbourethral \text{ gland}", "Prostate")$

Answer: C

 [Watch Video Solution](#)

557. The 32-cells stage of the human embryo is

A. Smaller than fertilized egg

B. Same size as fertilized egg

C. Two times the size of fertilised egg

D. Four times the fertilized egg.

Answer: B

 [Watch Video Solution](#)

558. Besides activating the egg, another role of a sperm is to carry to egg

A. RNA

B. Ribosomes

C. Mitochondria and 9+2 arrangement of microtubules

D. DNA

Answer: D

 [Watch Video Solution](#)

559. In females, the hormone inhibin is secreted by

- A. Granulosa cells and corpus luteum
- B. Granulosa and theca cells
- C. Granulosa and cumulus oophorus cells
- D. Granulosa cells and zona pellucida.

Answer: A

 [Watch Video Solution](#)

560. Match the columns and find the correct combination

I		II	
a.	Hypothalamus	1.	Sperm lysins
b.	Acrosome	2.	Estrogen
c.	Graafian follicle	3.	Relaxin
d.	Leydig cells	4.	Gn RH.
e.	Parturition	5.	Testosterone

(a) a-2, b-1, c-4, d-3, e-5

(b) a-4, b-1, c-2, d-5, e-3

(c) a-2, b-1, c-5, d-4, e-3

(d) a-4, b-1, c-2, d-3, e-5

A. a-2,b-1c-4,d-3,e-5

B. a-4b-c-2,d-5,e-3

C. a-2,b-1,c-5,d-4,e-3

D. a-4,b-1,c-2,d-3,e-5

Answer: B



Watch Video Solution

561. Which group represents external genitalia of human female ?

(a) Labium minora, labium majora, oviduct

(b) Labium minora, labium majora, cervix

(c) Labium minora, labium majora, ciltoris

(d) Labium minora, labium majora, vagina

A. Labium minors, labium majora,oviduct

B. Labium minors, labium majora, cervix

C. Lebiium minors, labium majora, ciloris.

D.

Answer: D



Watch Video Solution

562. Accessory glands associated with the genital organs in female
rate are

(i) Vestibular Bartholins (ii) Cowper's glands

(iii) Ampullary glands (iv) Vesicular gland

A. a,b

B. a only

C. b,c

D. d only

Answer: B



Watch Video Solution

563. Connective tissue around seminiferous tubules possess endocrine cells called

A. leydig cells

B. Sertoli cells

C. Primary germ cells

D. Both A and B

Answer: A

 [Watch Video Solution](#)

564. Multicellular, multinucleate, irregular mass of embryo which pass into uterine wall is

- A. Ectoderm
- B. Endoderm
- C. Syncytiotrophoblast
- D. Amnion.

Answer: C

 [Watch Video Solution](#)

565. Various parts of male urethra are

- A. Prostatic, bulboourethral and ejaculatory
- B. Prostatic, membranous and penile
- C. Corpora cavernosa and corpus spongiosum
- D. Prostatic, bulbourethral and glans.

Answer: B



Watch Video Solution

566. What is false?

- A. Menarche is beginning of menstruation
- B. Menstruation is shedding of endometrial lining
- C. Menopause occurs in the beginning of puberty

D. Ovulation occurs under high titre of LH.

Answer: C

 [Watch Video Solution](#)

567. The cavity contained in Graafian follicle is

- A. Antrum
- B. Centrocoel
- C. Blastocoel
- D. Archenteron.

Answer: A

 [Watch Video Solution](#)

568. Morphogenetic movements take place during

- A. Formation of morula
- B. Blastulation
- C. Gastrulation
- D. Organogenesis.

Answer: C



Watch Video Solution

569. Gastrula has a pore known as

- A. Zoospore
- B. Oospore
- C. Gonospore

D. Blastopore.

Answer: D



Watch Video Solution

570. Which of the following is not the reason for very high load of bilirubin ?

- (a) Excessive red blood cells in the new born burst, relasing bilirubin
- (b) Insoluble bilirubin in the intestine is reabsorbed by the blood
- (c) Liver of the new born is too young to cope with the heavy load of bilirubin
- (d) Mother's milk contains a high amount of blirubin.

A. Insolubl irubin in the intestine is reabsorbed by the blood

- B. Liver of the new born is too young to cope with the heavy load of bilirubin
- C. Mother's milk contains a high amount of bilirubin.
- D.

Answer: D

 [Watch Video Solution](#)

571. In the absence of acrosome the sperm

- A. Cannot penetrate the egg
- B. Cannot get food
- C. Cannot get energy
- D. Cannot swim.

Answer: A::C

 [Watch Video Solution](#)

572. Chorionic gonadotropic hormone is secreted by

- A. Placenta
- B. Ovary
- C. Anterior pituitary gland
- D. Posterior pituitary gland.

Answer: A

 [Watch Video Solution](#)

573. Metadiscoidal placenta is found in

A. Humans

B. Cow

C. Pig

D. Rabbit.

Answer: A



Watch Video Solution

574. In humans the oocyte is maintained in a state of meiotic arrest by the secretion of

A. Granulosa cells

B. Zona pellucida

C. Cumulus oophorus

D. Theca.

Answer: A



Watch Video Solution

575. Identical twins are also known as

- A. Monozygotic twins
- B. Dizygotic twins
- C. Fraternal twins
- D. Both B and C.

Answer: A



Watch Video Solution

576. Medulla oblongata develops from

- A. Ectoderm
- B. Endoderm
- C. Mesoderm
- D. Mesenchyme.

Answer: A

 [Watch Video Solution](#)

577. In human the unpaired male reproductive structure is

- A. Testis
- B. Seminal vesicle
- C. Bulbourethral gland
- D. Prostate

Answer: D

 [Watch Video Solution](#)

578. Mammalian blastula is known as

- A. Trophoderm
- B. Blastocyst
- C. Foetal blastula
- D. Oedema.

Answer: B

 [Watch Video Solution](#)

579. Acrosome of sperm contains

A. Hydrolytic enzymes

B. DNA

C. Fructose

D. Mitochondria.

Answer: A



Watch Video Solution

580. Radial cleavage is found in

A. Tunicates

B. Protozoans

C. Coelenterates

D. Annelids.

Answer: C

 [Watch Video Solution](#)

581. Cavity formed during gastrulation is

A. Primitive gut

B. Gastrocoel

C. Archenteron

D. All the above.

Answer: B

 [Watch Video Solution](#)

582. Which hormones are produced in women only during pregnancy?

- A. Human chorionic gonadotropin (hCG)
- B. Relaxin
- C. Human placental lactogen (hPL)
- D. All the above.

Answer: D



[Watch Video Solution](#)

583. Menstrual phase is followed by

- A. Luteal phase
- B. Follicular phase

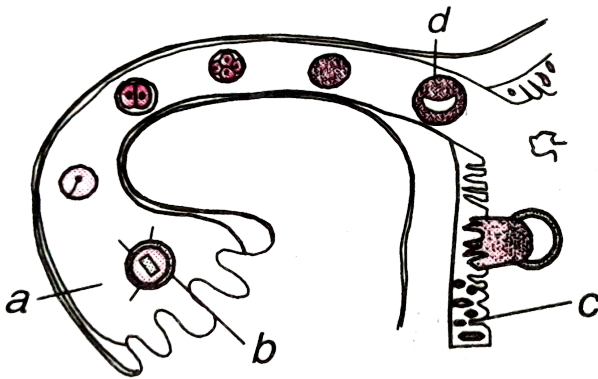
C. Fertilization

D. Implanatation

Answer: B

 Watch Video Solution

584. What do a, b, c and d represents respectively.



- (1) Infundibulum, fertilization myometrium, morula
- (2) Infundibulum. Fertilization, endometrium, blastocyst
- (3) Isthmus, fertilization, myometrium, blastocyst
- (4) Isthmus, fertilisation, endometrium, morula

- A. Infundibulum, fertilization myometrium, morula
- B. Infundibulum. Fertilization, endometrium, blastocyst
- C. Isthmus, fertilization,myometrium, blastocyst
- D. Isthmus, fertlisation,endometrium,morula.

Answer: B

 [Watch Video Solution](#)

585. Which animal has the longest gestation period?

- A. Shark
- B. Elephant
- C. Walrus
- D. Dog.

Answer: B



Watch Video Solution

586. The internal cavity commonly formed by cell division prior to gastrulation is the

- A. Enteron
- B. Blastopore
- C. Blastocoel
- D. Coelom.

Answer: C



Watch Video Solution

587. Signals from fully developed foetus and placenta ultimately lead to parturition which requires the release of

- A. Estrogen from placenta
- B. Oxytocin from foetal pituitary
- C. Oxytocin from maternal pituitary
- D. Relaxin from placenta.

Answer: C



Watch Video Solution

588. In human female the blastocyst:-

- A. Gets implanted in endometrium by trophoblast cells
- B. Forms placenta even before implanatation

C. Gets implanted into uterus 3 days after ovulation

D. Gets nutrition from uterine endometrial secretion only after implanatation.

Answer: A



Watch Video Solution

589. Secretions from which one of the following are rich in fructose,calcium and some enzymes?

A. Male accessory glands

B. Pancreas

C. Liver

D. Salivary glands.

Answer: A



[Watch Video Solution](#)

590. Which is correct about morula.

- A. Less cytoplasm and less DNA than zygote
- B. Same amount of cytoplasm and DNA as zygote
- C. More cytoplasm and more DNA than zygote
- D. Same amount of cytoplasm but much more DNA than zygote.

Answer: D



[Watch Video Solution](#)

591. Foetal Movements and sprerance of hair on head occur in.....month of pregnancy

- A. Fifth
- B. Sixth
- C. Third
- D. Fourth

Answer: A

 [Watch Video Solution](#)

592. Second maturation division of mammalian ovum occurs

- A. Until after sperm has penetrated ovum
- B. Until nuclear of sperm and ovum fuse
- C. In Graafian follicle soon after first maturation division.
- D. Shortly after ovulation before entry into fallopian tube.

Answer: A

 [Watch Video Solution](#)

593. Vasa efferentia are the ductules leading from

- A. Rete testis to vas deferens
- B. Vas deferens to epididymis
- C. Epididymis to urethra
- D. Testicular lobules to rete testis.

Answer: A

 [Watch Video Solution](#)

594. The Sertoli cells occur in

- A. Adrenal cortex and secrete adrenaline
- B. Seminiferous tubules and provide nutrition to germ cells
- C. Pancrease and secrete choleystokinus
- D. Ovarises and secrete progesterone.

Answer: B

 [Watch Video Solution](#)

595. Which of the following statements about human sperm is correct?

- A. Sperm lysins in acrosome dissolve egg envelope facilitating fertilization.
- B. Acrosome serves as sensory structure leading sperm towards ovum

C. Acrosome has no particular function

D. Acrosome has conical tip for piercing and penetrating egg for fertilization.

Answer: A



Watch Video Solution

596. Part of fallopian tube closest to ovary is

A. Infundibulum, fertilization myometrium, morula

B. Cervix

C. Ampulla of oviduct

D. Isthmus.

Answer: A



Watch Video Solution

597. Which one is not character of haemochorial placenta

- A. CO_2 and excretory products pass from foetus to mother's body
- B. O_2 and nutrients from mother's body enter the foetus
- C. Chorion villi are covered by blood sinuses of mother
- D. It protects foetus from mechanical shocks.

Answer: D



Watch Video Solution

598. Which gland secretes alkaline mucous in the urethra to neutralize the acidity of urine?

- A. Prostate gland
- B. Cowper's gland
- C. Seminal vesicle
- D. Preputial glands.

Answer: B

 [Watch Video Solution](#)

599. Sixty percent of semen is produced by

- A. Bartholin's glands
- B. Cowper's glands
- C. Seminal vesicles
- D. Prostate gland.

Answer: C



Watch Video Solution

600. Epididymis lies between

- A. Rete testis and vasa efferentia
- B. Vas deferens and vasa efferentia
- C. Vas deferens and ejaculatory duct
- D. Seminal tubules and rete testis.

Answer: B



Watch Video Solution

601. Due to deficiency of which hormone, bones become weak in females

- A. ACTH
- B. TSH
- C. Progesterone
- D. Estrogen

Answer: D



[Watch Video Solution](#)

602. Assertion Q.

Due to fragmentation in Planaria, each part develops the remaining body parts and becomes a complete animal

Reason R. Differentiated tissue present in each broken part of

Planaria undergoes de-differentiation and then differentiation in regeneration.

- A. Q and R both are correct and R is not a correct reason for Q
- B. Q and R both are correct and R is correct reason for Q
- C. Q and R both are wrong
- D. Q is correct but R is wrong.

Answer: B



[Watch Video Solution](#)

603. Menstruation is caused by

- A. Increase in LH
- B. Increase in estrogen
- C. Increase in progesterone

D. Decrease in progesterone

Answer: D

 [Watch Video Solution](#)

604. The first milk which comes out from the mother's mammary glands just after child birth is known as

A. Colostrum

B. Prolactin

C. Human placental lactogen (hPL)

D. Oxytocin.

Answer: A

 [Watch Video Solution](#)

605. In human beings, menstrual cycle ceases around 50 years of age that is termed as

- A. Menopause
- B. Menarche
- C. Dipause
- D. None of the above

Answer: A



[Watch Video Solution](#)

606. Which type of germ cells contains 23 chromosomes?

- A. Spermatogonia
- B. Primary spermatocytes

C. Secondary spermatocytes

D. None of above

Answer: C

 [Watch Video Solution](#)

607. Which layer of uterus undergoes cyclical changes during menstrual cycle?

A. Myometrium

B. Endometrium

C. Perimetrium

D. All the above.

Answer: B

 [Watch Video Solution](#)

608. Gonadotropin releasing hormone is formed by

- A. Adenohypophysis
- B. Pars intermedia
- C. Neurohypophysis
- D. Hypothalamus.

Answer: D



Watch Video Solution

609. Which is associated with production of androgens

- A. ICSH
- B. ACTH

C. TSH

D. ADH.

Answer: A

 [Watch Video Solution](#)

610. Which differentiates a sperm from egg

A. Cytoplasm is more abundant in sperm than in egg

B. Accessory membranes are absent in sperm but present in
egg

C. Nucleus is clear in sperm and very compact in egg

D. Mitochondria form a sheath in egg and diffused in sperm.

Answer: B

 [Watch Video Solution](#)

611. Which is incorrect about fertilization

- A. It restores diploid condition
- B. It activates egg
- C. There is no variation
- D. It determines sex of offspring.

Answer: C

 Watch Video Solution

612. Animals with cleidoic eggs show

- A. External fertilization, internal development
- B. Internal fertilization internal development

C. External fertilization, external development

D. Internal fertilization external development.

Answer: D

 Watch Video Solution

613. Match the columns and find the correct

Column I		Column II	
a. Parturition	p.	Attachment of zygote to endometrium	
b. Gestation	q.	Release of egg from Graafian follicle	
c. Ovulation	r.	Delivery of baby from uterus	
d. Implantation	s.	Duration between pregnancy and birth	
e. Conception	t.	Formation of zygote by fusion of egg and sperm	
	u.	Stoppage of ovulation and menstruation.	

A. a-q,b-s,c-p,d-t,e-r

B. a-s,b-r,c-p,d-t,e-q

C. a-t,b-p,c-q,d-r,e-s

D. a-r,b-s,c-q,d-p,e-t.

Answer: D



[Watch Video Solution](#)

614. Fimbriae of fallopian tube

A. Release ovum from Graafian follicle

B. Cause endometrial changes for implantation

C. Help develop corpus luteum

D. Help collection of ovum after ovulation

Answer: D



[Watch Video Solution](#)

615. In human, cleavage divisions are

- A. Slow and synchronous
- B. Slow and asynchronous
- C. Fast and synchronous
- D. Fast and asynchronous.

Answer: B

 Watch Video Solution

616. Primary spermatocyte differs from spermatogonium in

- A. Size and volume
- B. Size of chromosomes

C. DNA content

D. Number of chromosomes.

Answer: A

 [Watch Video Solution](#)

617. Which is devoid of glands.

A. Uterus

B. Vulva

C. Vagina

D. Oviduct.

Answer: C

 [Watch Video Solution](#)

618. Corpus luteum releases

- A. Androgen
- B. Progesterone
- C. Estrogen
- D. Both B and C.

Answer: D



Watch Video Solution

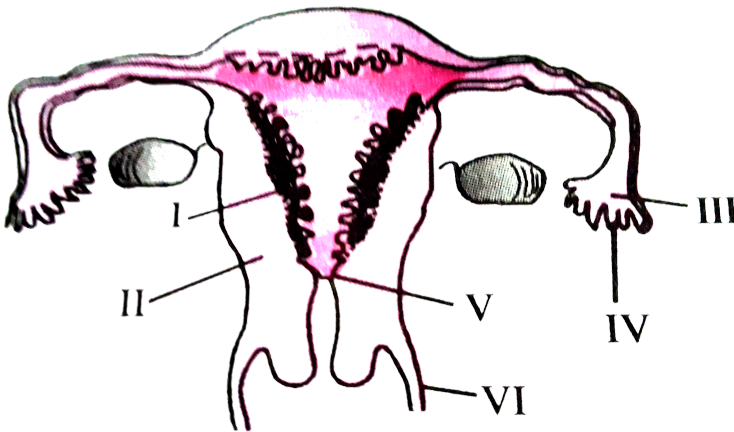
619. The number of autosomes in human primary spermatocyte is

- A. 22
- B. 23
- C. 44

Answer: C

 Watch Video Solution

620. Identify the correct set of three parts



A. IV-Oviducal funnel,V-Uterus,VI-Cervix

B. I-Perimetrium. II-Myometrium, III-Fallopian tube

C. II-Infundibulum,IV-Fimbriae,V-Cervix.

D. None of these

Answer: D

 [Watch Video Solution](#)

621. What happens during fertilization when many sperms reach close to ovum

- A. Cells of corona radiata trap all the sperms except one
- B. Only two sperms nearest to ovum penetrate zona pellucida
- C. Secretion of acrosome helps one sperm enter cytoplasm of ovum through zona pellucida
- D. All sperms except the one nearest to ovum lose their tails.

Answer: C

 [Watch Video Solution](#)

622. Which is correct

- A. Humans show spontaneous ovulation
- B. Several enzymes occur in bile juice
- C. Monkeys, apes and humans have estrus cycle
- D. Urine is pale yellow and slightly alkaline.

Answer: A



Watch Video Solution

623. Assertion. Corpus luteum is produced by Graafian follicle after ovulation

Reason. It secretes estrogen which is necessary to maintain pregnancy.

If both A_s and R are correct and R is correct explanation of A_s

If both A_s and R are correct but R is not correct explanation of A_s

If A_s is correct, R is wrong

If both A_s and R are wrong.

A. A

B. B

C. C

D. D

Answer: C



Watch Video Solution

624. Which is called milk ejection hormone

A. Prolactin

B. Oxytocin

C. Vassopressin

D. Luteinizing hormone.

Answer: B



Watch Video Solution

625. Which is false about visibility of mammalian sperm

A. Sperm is visible for only 24 hours.

B. Sperm viability is determined by its motility

C. Sperms must be concentrated in thick suspension

D. It depends upon pH of medium as sperm is more active in alkaline medium.

Answer: A

 [Watch Video Solution](#)

626. Signals for parturition originate from

- A. Fully developed foetus only
- B. Placenta only
- C. Oxytocin released by maternal pituitary
- D. Both A and B

Answer: D

 [Watch Video Solution](#)

627. In normally pregnant woman, gonadotropin activity shows high level of

- A. Circulating FSH and LH to stimulate implanatation of embryo in uterus
- B. Circulating hCG to stimulate endometrial thickening
- C. Circulating hCG to stimulate estrogen and progesterone synthesis
- D. FSH and LH to stimulate endometrial thickening.

Answer: B



Watch Video Solution

628. In spermatogenesis, reduction divison of chromosome occurs during conversion of

- A. Primary spermatocytes to secondary spermatocytes
- B. Spermatogonia to primary spermatocytes
- C. Spermatids to sperms
- D. Secondary spermatocytes to spermatids.

Answer: A

 [Watch Video Solution](#)

629. Which hormone is not produced by corpus luteum

- A. Progesterone
- B. Estradiol
- C. Inhibin
- D. Relaxin

Answer: C

 [Watch Video Solution](#)

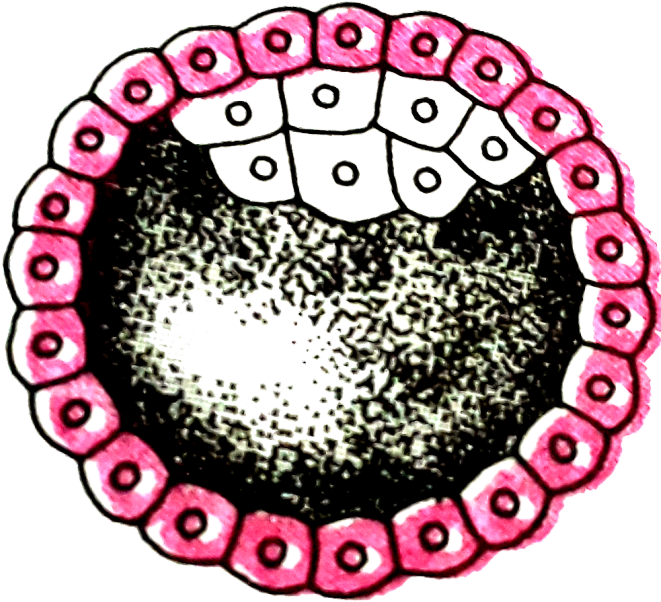
630. Spermatogenesis occurs in

- A. Vasa deferentia
- B. Epididymis
- C. Seminiferous tubules
- D. Penis.

Answer: C

 [Watch Video Solution](#)

631. Identify development stage and place of occurrence.



- (a) Blastocyst, uterine wall
- (b) 8-celled morula, starting point of fallopian tube
- (c) Late morula ,middle part of fallopian tube
- (d) Blastula, end part of fallopian tube.

A. Blastocyst, uterine wall

B. 8-celled morula, starting point of fallopian tube

C. Late morula ,middle part of fallopian tube.

D. Blastula, end part of fallopian tube.

Answer: A

 [Watch Video Solution](#)

632. Secretory phase of human menstrual cycle is also called

- A. Luteal phase and lasts for 8 days
- B. Luteal phase and lasts for 13 days
- C. Follicular phase and lasts for 13 days
- D. Follicular phase and lasts for 6 days.

Answer: B

 [Watch Video Solution](#)

633. A temporary endocrine gland in humans is

- A. Islets of Langerhane
- B. Pineal body
- C. Corpus luteum
- D. Corpus allate.

Answer: C



Watch Video Solution

634. Braxton hicks contractions occur during

- A. Passage of food through alimentary canal
- B. Peristalsis
- C. Pregnancy

D. Lactation.

Answer: C

 [Watch Video Solution](#)

635. The correct sequence of human embryonic development is

- A. Gastrocoel-Blastocoel-Neural Crest -Notochord
- B. Gastrocoel-Blastocel-Notochord-Neural Crest
- C. Blastocoel-Neural crest -Gastrocoel -Notochord
- D. Blastocoel-Gastrucoel-Neural crest -Notochord.

Answer: D

 [Watch Video Solution](#)

636. The onset of menstrual cycle in females of anthropoid primates is known as

- A. Puberty
- B. Menarche
- C. Menopause
- D. Menstruation

Answer: B

 [Watch Video Solution](#)

637. Thick yellow high protein fluid produced by the mammary glands of a woman during first 2-3 days after child birth is known as:-

- A. Meconium

B. Hymen

C. Cumulus oophorus

D. Colostrum.

Answer: D



Watch Video Solution

638. hCG, hPL and relaxin are produced in women

A. At puberty

B. During pregnancy

C. Before puberty

D. At menopause

Answer: B



Watch Video Solution

 [Watch Video Solution](#)

639. During spermatogenesis, the first meiotic division occurs in

- A. Sertoli cells
- B. Spermatids
- C. Spermatozoans
- D. Primary spermatocytes

Answer: D

 [Watch Video Solution](#)

640. Which is not functions of Sortoli cells

- A. Nurse cells to sperms
- B. Secreting hormone inhibin

C. Forming a manchette

D. Secreting testicular fluid for sperm transport.

Answer: C

 [Watch Video Solution](#)

641. Which is not correct about placenta

A. It prevents passage of maternal *IgG* to foetus

B. It acts as foetal lung

C. It acts as foetal liver

D. It acts as endocrine gland.

Answer: A

 [Watch Video Solution](#)

642. Fertilization membrane is formed to

- A. Facilitate entry of sperm into egg
- B. Provide stability to egg
- C. Prevent monospermy
- D. Prevent polyspermy.

Answer: D



Watch Video Solution

643. What is incorrect during amphimixis

- A. Swelling of sperm nucleus
- B. Initial movement of male nucleus along copulation path
- C. Establishment of achromatic spindle by proximal centriole

D. Completion of second meiotic division

Answer: B

 [Watch Video Solution](#)

644. Time for conception change in womens starting from day of menstraction.

- A. 4th day
- B. 14th day
- C. 26thday
- D. 1st day.

Answer: B

 [Watch Video Solution](#)

645. The 'cells of Rauber' are:

- A. Inner cell mass of blastocoel
- B. Secretory cells of endometrium
- C. Trophoblast cells in contact with uterine wall.
- D. Terophoblast cells in contact with inner cell mass of blastocyst.

Answer: D



Watch Video Solution

646. What is correct

- A. Foetal heart is formed in second month

B. Foetus shows movements for the first time in seventh month.

C.

D.

Answer: D



Watch Video Solution

647. Formation of archenteron starts in

A. Morula

B. Blastula

C. Early gastrula

D. Early neurula.

Answer: C



Watch Video Solution

648. In humans, the embryo is protected in

- A. Peritoneal cavity
- B. Amniotic cavity
- C. Pleural cavity
- D. Allantois.

Answer: B



Watch Video Solution

649. Relaxin is produced by

A. Ovary

B. Testis

C. Adrenal

D. Pituitary gland.

Answer: A



Watch Video Solution

650. Sperms develop in

A. Vas deferens

B. Seminiferous tubules

C. Prostate gland

D. Interstitial cells.

Answer: B

 [Watch Video Solution](#)

651. Which is not the function of placenta

- A. Secretes oxytocin during parturition
- B. Facilitates supply of O_2 and nutrients to embryo
- C. Secretes estrogen
- D. Facilitates removal of CO_2 and water products from embryo.

Answer: A

 [Watch Video Solution](#)

652. Menstrual flow occurs due to lack of

A. Vasopressin

B. Progesterous

C. FSH

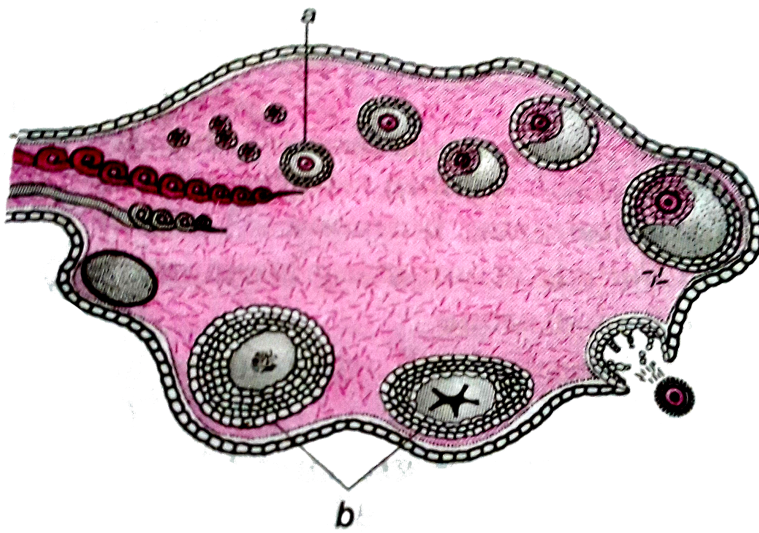
D. Oxytocin.

Answer: B



Watch Video Solution

653. Identify the option a or b correctly along with its function/characteristic.



A. a-tertiary follicle, forms Graafian follicle

B. b-corpora luteum, secretes estrogen

C. a-primary oocyte, prophase 1 of meiotic division

D. b-corpora luteum, secretes progesterone.

Answer: D

 [Watch Video Solution](#)

654. Spermiogenesis changes

- A. Spermatogonium into primary spermatocyte
- B. Primary spermatocyte into secondary spermatocyte
- C. Secondary spermatocyte into spermatid
- D. All the above.

Answer: D



Watch Video Solution

655. Hormone responsible for spermatogenesis is

- A. Androgen
- B. Progesterone
- C. Testosterone

D. None of these.

Answer: C

 [Watch Video Solution](#)

656. In mammals, Sertoli cells occur in

- A. Germinal epithelium of testis
- B. Germinal epithelium of ovary
- C. Medulls of kidney
- D. Adrenal cortex.

Answer: A

 [Watch Video Solution](#)

657. Cleavage of Frog's egg is

- A. Meroblastic
- B. Holoblastic
- C. Heteroblastic
- D. Diploblastic.

Answer: B



Watch Video Solution

658. In mammals, spermatogenesis is stimulated by

- A. MSH
- B. TSH
- C. ADH

D. FSH.

Answer: D



Watch Video Solution

659. Formation of activation calyx in the egg takes place

- A. Before fertilization
- B. After fertilization
- C. At the time of cleavage
- D. At the time of amphimixis.

Answer: B



Watch Video Solution

660. a. The egg of is moderately telolecithal b. Sooner or later the cleavage pattern becomes irregular

- A. Statement a is correct, b is wrong
- B. Statement b is correct, a is wrong
- C. Both the statement a in wrong
- D. Both the statements a and b are correct.

Answer: D



Watch Video Solution

661. Arrange male reproductive accessory organs based on the amount of secretion poured into urethra

- (i) Prostate gland, (ii) Seminal vesicles
- (iii) Bulbourethral glands.

A. $i > ii > iii$

B. $iii > ii > i$

C. $ii > iii > i$

D. $ii > i > iii$.

Answer: D



Watch Video Solution

662. Given below are assertion and reason, Point out if both are true with reason being correct explanation (A), both are true but reason is not correct explanation (B), assertion is true but reason is wrong (c) and both are wrong (D).

Assertion. In a regular medical examination of a small population , a 35 years old lady was found to have higher levels of oestrogen

and progesterone in her blood.

Reason: The lady is 12 weeks pregnant.

A. A

B. B

C. C

D. D

Answer: A



[Watch Video Solution](#)

663. Component of seminal vesicles that provides a forensic test for rape is

A. Phosphorycholine

B. Prostaglandin

C. Fructose

D. Citric acid

Answer: C

 [Watch Video Solution](#)

664. Oophorocytosis is

A. Disorder of female reproductive system

B. Stage in the production of ovum

C. Disorder in male reproductive system

D. Stage in the production of sperms.

Answer: A

 [Watch Video Solution](#)

665. Concordant type of twins are

- A. Free martins
- B. Dizygotic twins
- C. Monozygotic twins
- D. Both B and C.

Answer: C



Watch Video Solution

666. How many sphincters are present in the urethra

- A. 4
- B. 3
- C. 2

D. 1

Answer: C

 [Watch Video Solution](#)

667. Secondary spermatocytes undergo second meiotic division during spermatogenesis to produce.

A. Spermatozoa

B. Diploid spermatids.

C. Primary spermatocytes → Secondary spermatocytes → spermatids → Spermatogonia → Sperms

D. Spermatogonia

Answer: D

 [Watch Video Solution](#)

668. Spermatids are transformed into spermatozoa by

- A. Spermiogenesis
- B. Spermatosis
- C. Meiosis
- D. Spermiation.

Answer: A



Watch Video Solution

669. How many sperms are present in an average 3 ml ejaculation

- A. 200 million
- B. 300 million

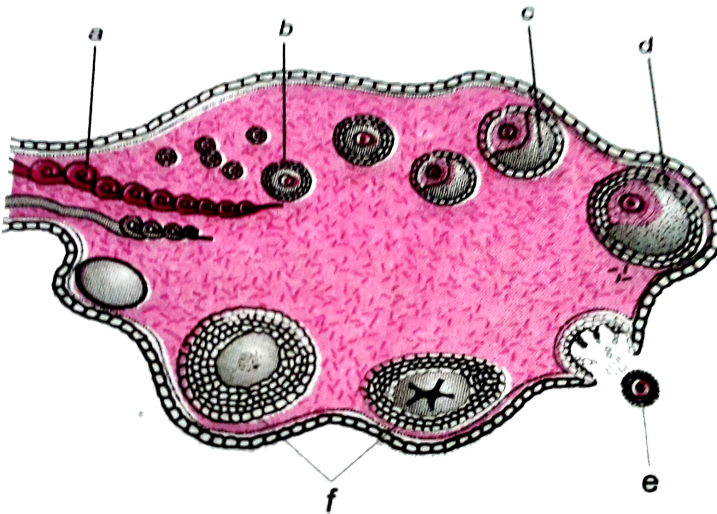
C. 500 million

D. 800million.

Answer: B

 Watch Video Solution

670. Identify the correct labellings in the diagram



A. (1) a-blood vessel, b-primary follicle, c-tertiary follicle, d-

Graafian follicle, e-ovum, f-corporis luteum

- B. (2) a-primary follicle, b-blood vessel, c-tertiary follicle, d-Graafian follicle, e-ovum, f-corpora lutea
- C. (3) a-blood vessel, b-primary follicle, c-tertiary follicle, d-ovum, e-Graafian follicles, f-corpora lutea
- D. (4) a-ovum, b-Graafian follicle, c-corpora lutea, d-blood vessel, e-primary follicle, f-tertiary follicle.

Answer: A



[Watch Video Solution](#)

671. Statement S. After implantation, the uterine endometrium undergoes changes to become decidua

Reason R. the placenta is described as deciduous type.

Correct answer is

- A. Both S and R are true but R is not correct explanation to S.
- B. S is correct but R is not correct
- C. S is not correct but R is not correct
- D. Both S and R are true and R is a correct explanation to S.

Answer: D

 [Watch Video Solution](#)

672. The anterior portion of the sperm head which is covered by a cap-like structure is called:

- A. Acrosome
- B. Antrum
- C. Sertoli cells
- D. Enzymes.

Answer: A

 [Watch Video Solution](#)

673. If spermatogenesis proceeds rapidly, inhibin is released.

Inhibin reduces secretion of

- A. Luteinizing hormone
- B. Follicle stimulating hormone
- C. Testosterone
- D. Interstitial cell stimulating hormone.

Answer: B

 [Watch Video Solution](#)

674. The first sign of growing human foetus in uterus may be noticed by

- A. Listening heart sound
- B. Movement of fortus
- C. Development of limbs and digits
- D. None of these

Answer: A



Watch Video Solution

675. Match the lists and find the correct option

I		II	
(a)	Leydig cells	I.	Carry sperms from seminiferous tubules to vasa efferentia
(b)	Sertoli cells	II.	Nourish sperms
(c)	Rete testis	III.	Secretion of testosterone
(d)	Corpus luteum	IV.	Secretion of progesterone
		V.	Secretion of estrogen

A. a-II,b-II,c-V,d-IV

B. a-III,b-II,c-I,d-IV

C. a-III,b-II,c-V,d-IV

D. a-II,b-III,c-I,d-V

Answer: B



Watch Video Solution

676. The biochemical procedure used to detect human chorionic gonadotrophin is

- A. WIDAL
- B. CAT
- C. MRI
- D. ELISA

Answer: D

 [Watch Video Solution](#)

677. Which of the following hormones are secreted in large quantities during pregnancy in women

- A. hCG, progesterone, estradiol and FSH

B. hCG, hPL, progesterone, estrogen and LH

C. LH, estrogen and estradiol

D. hCG, and hPL.

Answer: D



Watch Video Solution

678. Cleavage is a succession of rapid cell division that follow fertilisation . During cleavage.

A. Number of cells increases and size of cells decreases

B. Number of cells increaes and embryo enalrges.

C. Number of cells decreases and embryo does not enlarge.

D. Number of cells neither increases nor decreases but forms blasmtomeres.

Answer: A

 [Watch Video Solution](#)

679. Human primary spermatocyte contains

- A. 22 autosomes and a X-chromosomesome
- B. 22 sutosomes and a Y-chromosome
- C. 22 autosomes and a Y-chromosome
- D. 22 pairs of autosomes and XY chromosomes.

Answer: D

 [Watch Video Solution](#)

680. Which of the following hormones initiate parturition

- A. ACTH,hCG,oxytocin
- B. ACTH,corticosteroid, oxytocin
- C. Corticosteroid, ACTH protaglandin
- D. ACTH, progesterone hCG.

Answer: B

 **Watch Video Solution**

681. Identify the correct option in column I, II and III

	I	II	III
(1)	Interstitial cells	(a) Cortex of ovary	(i) Follicular fluid
(2)	Sertoli cells	(b) Ovarian follicle	(ii) Progesterone
(3)	Granulosa cells	(c) Testis	(iii) Attachment of sperm bundle
(4)	Cells of corpus luteum	(d) Seminiferous tubules	(iv) Testosterone

- A. 2-a-iii,1-c-iv,3-b-I,4-d-ii
- B. 1-c-iv,2-d-iii,3-b-I,4-a-ii
- C. 1-d-iii,2-a-iv,3-b-I,4-c-ii

D. 2-d-iii,1-c-iv,3-a-ii,4-b-iv.

Answer: B

 Watch Video Solution

682. Identify the correct match.

Accessory gland		Function	
(i)	Seminal vesicle	(a)	Lubricates vagina
(ii)	Prostate gland	(b)	Provides energy, coagulation of sperms
(iii)	Cowper's gland	(c)	Neutralises acidity of vagina

A. (1) i-b,ii-c,iii-a

B. (2) i-c,ii-b,iii-a

C. (3) i-a,ii-c,iii-b

D. (4) i-c,ii-a,iii-b

Answer: A

 [Watch Video Solution](#)

683. Testes are extra abdominal in position. Which of the following is the most appropriate reason

- A. Narrow pelvis in males
- B. Special protection for testes
- C. Prostate gland and seminal vesicles occupy maximum space.
- D. $20-25^{\circ}C$ lower than the normal body temperature.

Answer: D

 [Watch Video Solution](#)

684. Which of the following statement is wrong?

- (a) Sertoli cells provide nutrition to the developing male germ cells
- (b) Leydig cells synthesizes and secrete androgens
- (c) Secretions of acrosome help the sperm to enter the cytoplasm of the ovum
- (d) Secondary spermatocytes are diploid

A. Sertoli cells provide nutrition to the developing male germ cells

B. Leydig cells synthesise and secrete androgens

C. Secretions of acrosome help the sperm to enter the cytoplasm of the ovum

D. Secondary spermatocytes are diploid

Answer: D



Watch Video Solution

685. The inner glandular layer of the uterus is

- A. Endometrium
- B. Myometrium
- C. Fallopian tubes
- D. Perimerium

Answer: A



[Watch Video Solution](#)

686. Release of sperms from seminiferous tubules is called

- A. Spermiogenesis
- B. Spermiation

C. Spermatogenesis

D. Fertilization.

Answer: B

 [Watch Video Solution](#)

687. The shared terminal duct of the reproductive and urinary system in the human male is

A. Ureter

B. Vas deferens

C. Vasa efferentia

D. Urethra.

Answer: D

 [Watch Video Solution](#)

688. Select the correct option describing gonadotropin activity in a normal pregnant female

- A. High level of FSH and LH facilitate implantation of the embryo.
- B. High level of hCG stimulates the synthesis of estrogen and progesterone
- C. High level of hCG stimulates the thickening of endometrium
- D. High level of FSH and LH stimulates the thickening of endometrium.

Answer: B



Watch Video Solution

689. During menstrual cycle, levels of LH and estrogen are highest around

A. 14th day

B. 21st day

C. 7th day

D. 28th day.

Answer: A



Watch Video Solution

690. Hormones for the menstrual cycle are produced by

A. Ovaries only

B. Uterus only

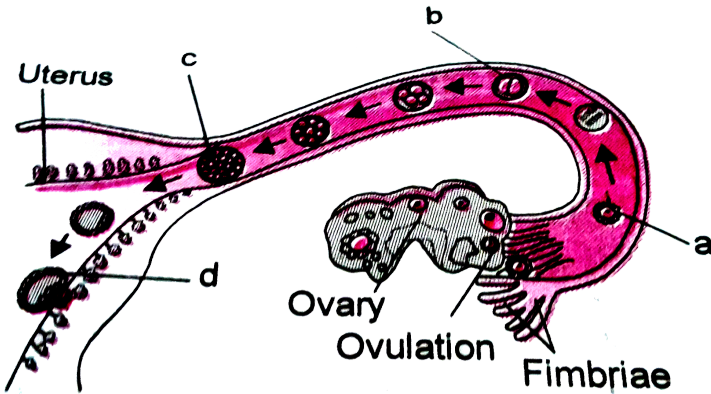
C. Ovaries and uterus

D. Ovaries and anterior pituitary.

Answer: D

[▶ Watch Video Solution](#)

691. Select the correct explanation for the label a,b,c and d



- A. (1) a-represents fertilized zygote
- B. (2) b-represents stage of morula
- C. (3) c-represents blastocyst

D. (4) d-represents blastocyst implantation.

Answer: D

 [Watch Video Solution](#)

692. Assertion : Parturition is induced by neural signal in maternal pituitary.

Reason : At the end of gestation period, the maternal pituitary release prolactin which causes uterine contractions.

A. A

B. B

C. C

D. D

Answer: D



[Watch Video Solution](#)

693. Which one of the following causes mammary glands to enlarge at puberty

- A. Testosterone
- B. Progesterone
- C. Estrogen
- D. Oxytocin.

Answer: C



[Watch Video Solution](#)

694. Which statement(s) is/are correct

- A. FSH and LH occur in both males and females.

B. FSH and LH stimulate the folliculate secrete estrogen.

C. The ovarian cycle depends upon blood levels of FSH and LH.

D. All the above.

Answer: D

 [Watch Video Solution](#)

695. One of the following cells secrete hormone

A. Cells of Leydig

B. Cells of Sertoli

C. Primary spermatocytes → Secondary spermatocytes

D. Secondary spermatocytes.

Answer: A

 [Watch Video Solution](#)

696. The glycoprotein fertilizin is secreted by

- A. Ovum
- B. Ovary
- C. Sperm
- D. Testis.

Answer: A

 Watch Video Solution

697. Ectoderm give rise to

- A. Cornea, hearth, bronchi, dentine
- B. Adrenal cortex, tongue, liver, retina

C. Lungs, adrenal medulla, dermis, thyroid

D. Enamel of teeth, nails, adrenal medulla, hair.

Answer: D

 [Watch Video Solution](#)

698. Pick up the odd homologous pair out

A. Barthlin's gland-Cowper's gland

B. Clitoris-Penis

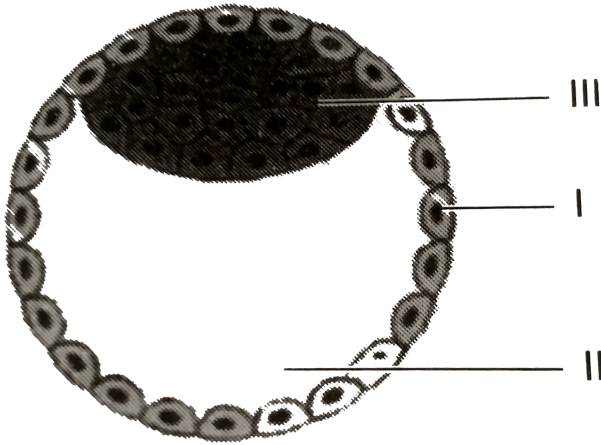
C. Mons pubis-Glans penis

D. Labia major-Scrotum.

Answer: C

 [Watch Video Solution](#)

699. Choose the correct group of labellings:



- A. I-Trophoblast, II-Archenteron, III-Micromeres
- B. I-Trophoblast, II-Blastocoel. III-Megameres.
- C. I-Trophoblast. II-Archenteron, III-Inner mass cells.
- D. I-Trophoblast, II-Blastocoel, III-Inner mass cells.

Answer: D



[Watch Video Solution](#)

700. Morula formed at the end of cleavage is celled

A. 14

B. 16

C. 18

D. 20

Answer: B



Watch Video Solution

701. Forceful muscular contractions of uterine wall are involved in

A. Implantation

B. Lactation

C. Micturition

D. Parturition.

Answer: D

 [Watch Video Solution](#)

702. What is "afterbirth" referred to:

- A. Amniotic fluid passing out
- B. Expulsion of baby
- C. Expulsion of placenta, umbilical cord and foetal membrane.
- D. Secretion of hormone relaxin.

Answer: C

 [Watch Video Solution](#)

703. During spermatogenesis, the diploid cells are

- A. Primary spermatocyte and spermtogonium
- B. Spermatogonium and spermatid
- C. Secondary spermatocyte and spermatid.
- D. Primary spermatocyte and spermatid.

Answer: A

 [Watch Video Solution](#)

704. Amnion and chlorion consist of

- A. Somatopleure
- B. Splanchnopleure
- C. Somatic mesoderm
- D. Primary spermatocyte and spermatid.

Answer: A

 [Watch Video Solution](#)

705. During menstrual phase, uterine endometrium, epithelial glands and connective tissues are broken. This is due to

- A. Over production of progesterone
- B. Lack of progesterone
- C. Over secretion of FSH
- D. Lack of estrogen.

Answer: B

 [Watch Video Solution](#)

706. Which one of the following hormones is responsible for uterine contraction during parturition?

- A. Relaxin
- B. Vasopressin
- C. Oxytocin
- D. Prolactin.

Answer: C



Watch Video Solution

707. Which of the following implants in the lining of uterus

- A. Zygote
- B. Gastrula

C. Blastocyst

D. Morula.

Answer: C

 [Watch Video Solution](#)

708. Example of sex hormone secreted by ovary is

A. FSH and LH.

B. FSH, LH and progesterone

C. Progesterone and estrogen

D. FSH, LH, progesterone and estrogen.

Answer: C

 [Watch Video Solution](#)

709. What is height and weight of twelve week old human embryo

A. 7.5cm,650gm

B. 42cm,1800gm

C. 7.5cm,14gm

D. 32cm,650gm.

Answer: C



Watch Video Solution

710. Study and identify the correct combination

A. AmnionSomatopleure-Protection

B. Allantois-Splanchnopleure-Placenta formation

C. Yolk sac-Midgut-Nutrition

D. Chorion-Outer wall of amniotic folds-Excretion.

Answer: A

 [Watch Video Solution](#)

711. Identify the complete and correct sequence in the passage of spermatozoa.

A. Seminiferous tubules → Rete testis → Vasa efferentia
→ Vas deferens → Epididymis → Ejaculatory duct →
Urethra → Vagina of female

B. Seminiferous tubules → Rete testis → Vasa efferentia
→ Epididymis → Vas Urethra → Vagina of female

C. Seminiferous tubules → Rete testis → Vasa efferentia
→ Epididymis → Urethra → Vagina of female

D. Seminiferous tubules → Rete testis → Vasa efferentia
→ Ejaculatory duct → Vagina of female.

Answer: B

 [Watch Video Solution](#)

712. Identify the wrong statement with respect to embryonic stem cells

- A. They are pluripotent
- B. They are isolated from epiblast tissue of blastocyst
- C. They cannot proliferate in culture medium
- D. They can give rise to the three germinal layers.

Answer: C

 [Watch Video Solution](#)

713. Identify the correct sequence of stages involved in the reproductive cycle of fungi.

A. Vas deference

B. Epididymis

C. Urethra

D. Vasa efferentia

Answer: C



Watch Video Solution

714. The hormone which acts on Sertoli cells and stimulates the process of spermatogenesis is :

A. LH

B. FSH

C. Androgen

D. GnRH.

Answer: B



Watch Video Solution

715. In human foetus, the limbs and digits develop after:

A. 8 weeks

B. Fifth month

C. First trimester

D. 12 weeks .

Answer: A

 [Watch Video Solution](#)

716. During menstrual cycle, the cyclic changes take place in

- A. Myometrium
- B. Corpus luteum
- C. Endometrium secretes nutrients for implanatation -11 to 18 days
- D. Pertimetrium.

Answer: C

 [Watch Video Solution](#)

717. Each secondary spermatocyte after second meiotic division produces

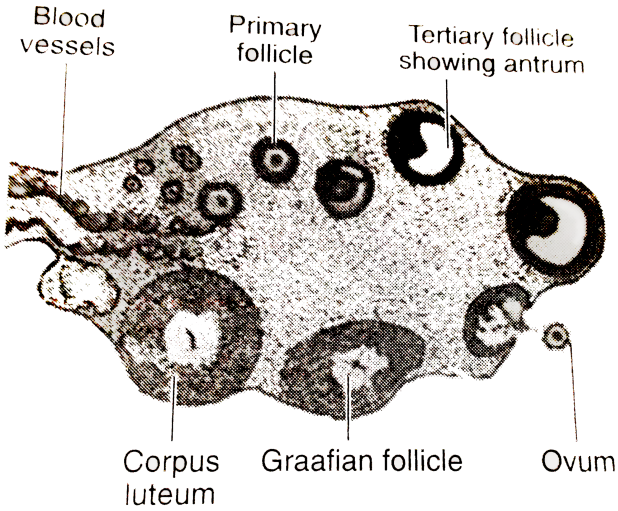
- A. Four haploid spermatids
- B. Only one haploid spermatid
- C. Two haploid spermatids
- D. Two diploid spermatids.

Answer: C



[Watch Video Solution](#)

718. Identify the wrongly labelled part:



A. Primary follicle

B. Ovum

C. Graafian follicle

D. Corpus luteum.

Answer: C



Watch Video Solution

719. Ectopic pregnancies are referred to as

- A. Pregnancies with genetic abnormality
- B. Implantation of embryo at site other than uterus
- C. Implantation of defective embryo in the uterus
- D. Pregnancies terminate due to hormonal imbalance.

Answer: B



Watch Video Solution

720. Which event is not associated with ovulation in human female

.

- A. Decrease in estradiol
- B. Full development of Graafian follicle
- C. Release of secondary oocyte

D. LH surge.

Answer: A



Watch Video Solution

721. Which of the following layers is acellular in antral follicle

A. Granulosa

B. Theca interna

C. Stroma

D. Zona pellucida.

Answer: D



Watch Video Solution

722. In human females, meiosis-II is not completed until

- A. Puberty
- B. Fertilization
- C. Uterine implantation
- D. Birth.

Answer: B



Watch Video Solution

723. During pregnancy degeneration of corpus luteum is prevented by the hormone

- A. hCG
- B. hPL

C. LH, estrogen and estradiol

D. Relaxin.

Answer: A

 [Watch Video Solution](#)

724. Connective tissues are derived from embryonic

A. Ectoderm

B. Endo-mesoderm

C. Endoderm

D. Mesoderm.

Answer: D

 [Watch Video Solution](#)

725. Oogenesis takes place in

- A. Squamous epithelium of ovary.
- B. Interstitial cells of ovary
- C. Follicles of ovary
- D. Germinal epithelium of ovary.

Answer: C



Watch Video Solution

726. Lanugo is

- A. Feather as junction of rachis and quill
- B. A certain feather present on tail region
- C. Coating of hair on epidermin of man

D. A coating of fine hair with which the body of mammals is covered during foetal development.

Answer: D

 [Watch Video Solution](#)

727. Respiratory system is derived from

A. Ectoderm

B. Mesoderm

C. Endoderm

D. Chorda mesoderm.

Answer: C

 [Watch Video Solution](#)

728. Fraternal twins in humans are produced when

- A. Two sperms fertilize an ovum and the first two blastomeres separate from each other.
- B. One sperm fertilize an ovum and the first two blastomeres separate from each other.
- C. Egg develop parthenogenetically and first two blastomeres separate from each other
- D. Two ova are fertilized simultaneously.

Answer: D



Watch Video Solution

729. In which phase of menstrual cycle, progesterone level rises

- A. Menstrual phase
- B. Proliferative phase
- C. Secretory phase
- D. Maturation phase.

Answer: C

 [Watch Video Solution](#)

730. Which one of these is not an accessory gland in male reproductive system

- A. Prostate gland
- B. Seminal vesicle
- C. Cowper's gland
- D. Bartholin's gland.

Answer: D



Watch Video Solution

731. Choose the correct sequence of events that occur in human reproduction

- A. (a) Gametogenesis → Gastrulation → Insemination → Fertilization → Implantation → Parturition
- B. (b) Gametogenesis → Insemination → Gestation → Implantation → Fertilization → Parturition
- C. (c) Gametogenesis → Insemination → Fertilization → Implantation → Gestation → Parturition
- D. (d) Insemination → Fertilization → Implantation → Gametogenesis → Gestation → Parturition

Answer: D

 [Watch Video Solution](#)

732. Pick up the hormone which is not secreted by human placenta

- A. hCG
- B. hPL
- C. Prolactin
- D. Estrogen

Answer: C

 [Watch Video Solution](#)

733. Which one of the following statements is correct?

- (a) Fertilization in human takes place in womb
- (b) Zygote contains haploid number of chromosomes
- (c) Fertilization membrane avoids polyspermy
- (d) Primary oocyte inhibits the process of oogenesis

A. Fertilization in human takes place in womb

B. Zygote contains haploid number of chromosomes

C. Fertilization membrane avoids polyspermy

D. Primary oocyte inhibits the process of oogenesis

Answer: C



Watch Video Solution

734. Spermatozoa not ejaculated are reabsorbed I the

A. Ejaculatory duct

B. Urethra

C. Vas efferens

D. Vas deferens.

Answer: C



Watch Video Solution

735. The proces by which primary germinal layers are formed is called

A. Blastulation

B. Cleavage

C. Gastrulation

D. Implanatation

Answer: c



Watch Video Solution

736. Select the correct pair of endodermal derivatives

- A. Adrenal medulla, dermis of skin
- B. Lungs, thyroid gland
- C. Lymphatic vessel, vagina
- D. Retina, tonsil

Answer: C



Watch Video Solution

737. Which constituent of seminal fluid helps in coagulation of semen after ejaculation

- A. Fibrin
- B. Fibrinogen
- C. Fructose
- D. Prostaglandins

Answer: B



[Watch Video Solution](#)

738. During fertilization, zona pellucida is dissolved by

- A. Hyaluronidase
- B. Hyaluronic acid

C. Renin

D. Acrosin

Answer: B



Watch Video Solution

739. Arrange in correct sequence the structures formed during spermatogenesis

- a) spermatogonia
- b) Secondary spermatocyte
- c) Spermatogonial stem cells
- c) spermatogonial stem cell
- d) primary spermatocyte
- e) spermatid

A. (1) c-d-b-a-e

B. (2) c-a-d-b-e

C. (3) a-b-c-d-e

D. (4) c-d-a-b-c

Answer: b



Watch Video Solution

740. Which of the following male accessory genital glands produce citric acid and prostaglandins

A. Seminal vesicles

B. Cowper's gland

C. Prostate gland

D. Bulbourethral gland

Answer: A



[Watch Video Solution](#)

741. Foetal ejection reflex in human female is induced by:

- A. Release of hormones from placenta
- B. Growth and development of ovarian follicles
- C. release of oxytocin from material pituitary
- D. Release of gonadotrophine

Answer: C



[Watch Video Solution](#)

742. Fertilization in humans is practically feasible only if

- A. The sperms are transported into cervix within 48 hours of release of ovum in uterus
- B. The sperms are transported into vagina just after the release of ovum in fallopian tube
- C. The ovum and sperms are transported simultaneously to ampullary-isthmic junction of fallopian tube
- D. The ovum and sperms are transported simultaneously to ampullary-isthmic junction of fallopian tube

Answer: C

 [Watch Video Solution](#)

743. Identify the correct statement on 'inhibin'

- A. Is produced by nurse cells in testes and inhibits the secretion of LH
- B. Inhibits the secretion of LH, FSH and prolactin
- C. Is produced by granulosa cells in ovary and inhibits the secretion of FSH
- D. Is produced by granulosa cells in ovary and inhibits the secretion of LH

Answer: C

 [Watch Video Solution](#)

744. Changes in GnRH pulse frequency in females is controlled by circulating levels of

- A. Progesterone and inhibin

B. Estrogen and progesterone

C. Estrogen and inhibin

D. Progesterone only

Answer: B



Watch Video Solution

745. Select the incorrect statement

A. LH triggers secretion of androgens from leydig cells

B. FSH stimulates Sertoli cells which helps in spermiogenesis

C. LH triggers ovulation in ovary

D. LH and FSH decrease gradually during follicular phase

Answer: D



Watch Video Solution

746. Which of the following depicts the correct pathway of transport of sperms?

A. Efferent ductules → Rete testis → Vas deferens → Epididymis

B. Rete testis → Efferent ductules → Epididymis → Vas deferens

C. Rete testis → Epididymis → Efferent ductules → Vas deferens

D. Rete testis → Vas deferens → Efferent ductules → Epididymis

Answer: B



747. Match the columns and find the correct option

I		II	
(a)	Mons pubis	(i)	Embryo formation
(b)	Antrum	(ii)	Sperm
(c)	Trophoectoderm	(iii)	Female external genitalia
(d)	Nebenkern	(iv)	graafian follicle

A. a-I, b-iv, c-iii, d-ii

B. a-iii, b-iv, c-ii, d-i

C. a-iii, b-iv, c-I, d-ii

D. a-iii, b-I, c-iv, d-ii

Answer: C

 [Watch Video Solution](#)

748. In mammalsova are found

- A. Mesolecithal
- B. Megalecithal
- C. Alecithal or microlecithal
- D. none

Answer: C



Watch Video Solution

749. Which of the following statements is correct regarding menstrual cycle?

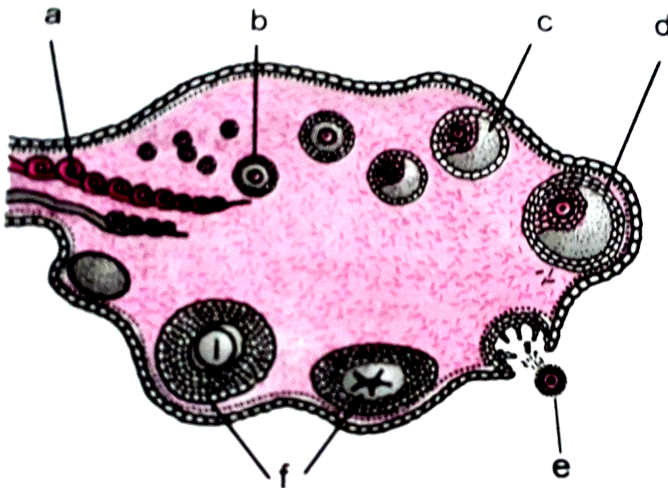
- A. LH induces rupturing of Graafian follicle

- B. Proliferative phase is characterised by increased production of progesterone
- C. corpus luteum secretes large amount of oestrogen
- D. Both LH and FSH attain a peak level in secretory phase

Answer: A

 [Watch Video Solution](#)

750. Choose the correct option from parts labelled a-f



A. b-Graafian follicle, f-corpora luteum

B. c-Graafian follicle, a-ovum

C. b-primary follicle, c-tertiary follicle showing antrum

D. e-corpora callosum, d-antrum cavity.

Answer: C



Watch Video Solution

751. Achondroplasia is a disease related to defect in the formation of

A. Membrane

B. Cartilage

C. Mucosa

D. None of the above

Answer: B

 [Watch Video Solution](#)

752. Capacitation occurs in

- A. Rete testis
- B. Epididymis
- C. Vas deferens
- D. Female reproductive tract.

Answer: D

 [Watch Video Solution](#)

753. Tyson's glands occur in the male reproductive system on

- A. Urethra
- B. scrotal sac
- C. Prepuce
- D. Corona of glans.

Answer:

 [Watch Video Solution](#)

754. Structural and functional unit of primary male sex organ is

- A. Testis
- B. Rete testis → Efferent ductules → Epididymis → Vas deferens
- C. Seminiferous tubule
- D. Vas deferens.

Answer:



Watch Video Solution

755. Perineum is the area in the female reproductive system that lies

- A. Above the external genitalia
- B. Below the external genitalia
- C. Sides of external genitalis
- D. Centre of genitalia.

Answer:



Watch Video Solution

756. Which gland of male reproductive system provides sugar/fructose for sperm motility?

- A. Seminal vesicle
- B. Prostate
- C. Cowper's
- D. Tyson's.

Answer:

 [Watch Video Solution](#)

757. Gynaecomastia is

- A. Surgical removal of testes
- B. Surgical removal of uterus

C. Enlargement of male breasts

D. Shrinkage of female breasts.

Answer:

 [Watch Video Solution](#)

758. Sperms are produced in adult human males

A. Continously

B. Periodically

C. Just before ejaculation Once.

D.

Answer:

 [Watch Video Solution](#)

759. Scrotum is absent in male.

- A. Bat
- B. Otter
- C. Monkeys, apes and humans
- D. Seal.

Answer:



Watch Video Solution

760. An induced ovulator is

- A. Cat
- B. Bitch
- C. Rabbit

D. Monkey.

Answer:



[Watch Video Solution](#)

761. Ovarian follicles were first observed by

A. Aristotle

B. Van Baer

C. Graaf

D. Pander.

Answer:



[Watch Video Solution](#)

762. Capacitation is

- A. Early cleavage for determining different parts
- B. Developing ability in sperm to penetrate egg
- C. Developing ability in egg
- D. Differentiation of gametes.

Answer:



Watch Video Solution

763. Vertebrate eggs are

- A. Indeterminate
- B. Determinate
- C. Holoblastic

D. Heteroblastic.

Answer:

 [Watch Video Solution](#)

764. The largest eggs belong to

- A. *Drosophila bifurca*
- B. *Drosophila melanogaster*
- C. *Ascaris lumbricoides*
- D. Ostrich.

Answer:

 [Watch Video Solution](#)

765. Mammalian blastula is called

- A. Blastodisc
- B. Discoblastula
- C. Stereoblastula
- D. Blastocyst.

Answer:



Watch Video Solution

766. Balfour's law is connected with

- A. Development of germinal layers
- B. Rate of segmentation
- C. Size of blastomeres

D. Both B and C.

Answer:

 [Watch Video Solution](#)

767. An animal with gestation period of more than one year is

A. Cow

B. Dog

C. Camel

D. Rat.

Answer:

 [Watch Video Solution](#)

768. Primary germinal layers were first studied by

- A. Hertwig
- B. Pander
- C. Roux
- D. Aristotle.

Answer:



Watch Video Solution

769. Union of egg and sperm nuclei were first observed by

- A. Hertwig
- B. Newport
- C. Prevost and Dumas

D. Balfour.

Answer:

 [Watch Video Solution](#)

770. Father of modern embryology :-

A. Haeckel

B. Von Baer

C. Wolff

D. Aristotle.

Answer:

 [Watch Video Solution](#)