



## BIOLOGY

### BOOKS - DINESH PUBLICATION ENGLISH

### PHYLUM - ARTHROPODA

Mcq

1. Cyclops is

- A. Terrestrial free living chilopod
- B. Aquatic free living crustacean
- C. Cursorial arachnid
- D. Aquatic insect.

**Answer: B**



[Watch Video Solution](#)

2. Cyclops differs from Daphnia in

- A. Having green colouration
- B. Absence of heart
- C. Absence of carapace
- D. All of above.

**Answer: D**



[Watch Video Solution](#)

3. Walking Worm is

- A. Hermit Crab
- B. Millipede

C. Peripatus

D. Scylla serrata

**Answer: C**



**Watch Video Solution**

**4. Trilobites are**

A. Extinct arthropods

B. Connecting link between annelids and molluscs

C. Living fossils

D. Insects.

**Answer: A**



**Watch Video Solution**

5. An arthropod having unjointed legs is

- A. Limulus
- B. Peripatus
- C. Eupagurus
- D. Millipede

**Answer: B**



**Watch Video Solution**

6. Daphnia resembles aphids in

- A. Parasitic mode of living
- B. Aquatic habitat
- C. Presence of carapace
- D. Parthenogenesis for a few generations.

**Answer: D**

 [Watch Video Solution](#)

7. A pair of stink gland is found in

- A. Julus
- B. Scolopendra
- C. Palamnaeus
- D. Paratelphusa.

**Answer: A**

 [Watch Video Solution](#)

8. A characteristic feature of scorpions is

A. 4 pairs of walking legs

B. Vivipary

C. Chelicerae

D. Pedipalpi.

**Answer: B**



**Watch Video Solution**

**9.** In hypermetamorphosis, there are

A. Several larval moultings

B. More than one pupal stage

C. Several larval stages showing different structure and habits

D. Several types of larvae.

**Answer: C**

 [Watch Video Solution](#)

10. Lepisma is

- A. Stick Insect
- B. Leaf Insect
- C. Praying Mantis
- D. Silver Fish.

**Answer: D**

 [Watch Video Solution](#)

11. Praying Mantis is

- A. Herbivorous
- B. Carnivorous

C. Saprozoic

D. Coprophagous.

**Answer: B**



**Watch Video Solution**

**12. Naiads are**

A. Nymphs of Locust

B. Nymphs of Grasshopper

C. Nymphs of Dragonfly

D. All the above.

**Answer: C**



**Watch Video Solution**



13. Eggs of Pediculus/human louse are

- A. Nits
- B. Tumblers
- C. Naiads
- D. Instars.

**Answer: A**



**Watch Video Solution**

14. True and complete metamorphosis occurs in

- A. Moth
- B. Grasshopper
- C. Bed Bug
- D. Silver Fish.

**Answer: A**



**Watch Video Solution**

**15.** Ticks and Mites belong to

- A. Insecta
- B. Crustacea
- C. Diplopoda
- D. Arachnida.

**Answer: D**



**Watch Video Solution**

**16.** Scabies is due to

A. Ticks

B. Itch Mite

C. Maggots

D. Fungal infection.

**Answer: B**



**Watch Video Solution**

**17. Worker termites are**

A. Wingless

B. Sterile

C. Blind

D. All the above.

**Answer: D**

 [Watch Video Solution](#)

**18.** Which social insect produces the biggest colony

- A. Bees
- B. Ant
- C. Termites
- D. Wasps.

**Answer: C**

 [Watch Video Solution](#)

**19.** Wings are covered by scales in

- A. Dragonflies
- B. Houseflies

C. Mosquitoes

D. Butterflies and Moths.

**Answer: D**



**Watch Video Solution**

**20.** Red dye for colouring cosmetics is obtained from

A. Lac Insect

B. Cochineal Insect

C. Spanish Fly

D. Honey Bee.

**Answer: B**



**Watch Video Solution**

21. An insect commonly available from book shelves is

- A. Silver Fish
- B. Drosophila
- C. Cockroach
- D. Mosquito.

**Answer: A**



**Watch Video Solution**

22. Resemblance of phyllium to a dicot leaf is

- A. Variation
- B. Adaptive radiation
- C. Mimicry
- D. Genetic drift.

**Answer: C**

 [Watch Video Solution](#)

**23.** A wingless blood sucking ectoparasitic insect is

- A. Mosquito
- B. Pediculus
- C. Silver Fish
- D. Aphids.

**Answer: B**

 [Watch Video Solution](#)

**24.** Glow worn/Fire Fly is

A. Insect

B. Arachnid

C. Diplopod

D. Chilopod.

**Answer: A**



**Watch Video Solution**

**25.** An animal related to spider is

A. Palamnaeus

B. Mosquito

C. Crab

D. Housefly.

**Answer: A**



 [Watch Video Solution](#)

26. An insect helping in pollination is

- A. *Drosophila*
- B. *Musca nebulosa*
- C. *Bombyx mori*
- D. *Apis dorsata*.

**Answer: D**

 [Watch Video Solution](#)

27. Cantharidine is got from

- A. Cochineal Insect
- B. Spanish Fly

C. Red Ant

D. Boll Weevil.

**Answer: B**



**Watch Video Solution**

**28.** An insect that produces shellac is

A. *Apis indica*

B. *Bombyx mori*

C. *Laccifer lacca*

D. *Dictyolopius coccus*.

**Answer: C**



**Watch Video Solution**

29. Centipede has

- A. 150 legs
- B. 200 legs
- C. As many pairs of legs as body segments
- D. As many legs as body segments.

**Answer: C**



[Watch Video Solution](#)

30. Life history of cockroach represents

- A. Ametabola
- B. Hemimetabola
- C. Paurometabola
- D. Holometabola.

**Answer: b**



**Watch Video Solution**

**31.** First pair of wings of Cockroach are

- A. Tegmina attached to mesothorax
- B. Elytra attached to metaorax
- C. Tegmina attached to prothorax
- D. Tegmina attached to metathorax

**Answer: A**



**Watch Video Solution**

**32.** An animal which periodically casts off its exoskeleton is

A. Unio

B. Fish

C. Fasciola

D. Cockroach.

**Answer: D**



**Watch Video Solution**

**33.** Tracheal respiration takes air to

A. Blood

B. Tissues

C. Lungs

D. Body cavity.

**Answer: B**

 [Watch Video Solution](#)

34. Dances of honey bees are performed by

- A. Workers while bringing food
- B. Drones during nuptial flight
- C. Queen during nuptial flight
- D. Scout bees before collector bees.

**Answer: D**

 [Watch Video Solution](#)

35. Members of bee colony recognise one another through

- A. Dance
- B. Touch

C. Smell

D. Vision.

**Answer: C**



**Watch Video Solution**

**36.** The two pairs of wings of an insect develop respectively from

A. Prothorax and mesothorax

B. Mesothorax and metathorax

C. Metathorax and first abdominal segment

D. First two abdominal segments.

**Answer: B**



**Watch Video Solution**

37. A spider spins the web by means of a section of

- A. Abdominal glands
- B. Salivary glands
- C. Thoracic glands
- D. Mouth

**Answer: A**



**Watch Video Solution**

38. Maggot is

- A. Larva of Anopheles/Culex
- B. Pupa of Housefly
- C. Larva of Housefly
- D. Larva of Dragonfly.



**Answer: C**



**Watch Video Solution**

**39.** Wiggler is larva of

- A. Beetle
- B. Mosquito
- C. Housefly
- D. Butterfly

**Answer: B**



**Watch Video Solution**

**40.** Pupa of mosquitoes is also named as

- A. Grub
- B. Tumbler
- C. Maggot
- D. Naiad

**Answer: B**

 [Watch Video Solution](#)

**41. Housefly spreads diseases**

- A. Typhoid, diphtheria, Tuberculosis and Pertussis
- B. Tuberculosis, Tetanus, Pertussis and Diphtheria
- C. Gangrene, Poliomyelities, Diphtheria and Typhoid
- D. Dengue, Encephalitis, Filariasis and Poliomyelities.

**Answer: C**



[Watch Video Solution](#)

42. Housefly cannot take food unless it is in

- A. Digested state
- B. Liquid state
- C. Semisolid state
- D. Solid state

**Answer: B**



[Watch Video Solution](#)

43. Peripatus belongs to

- A. Arachnida
- B. Insecta

C. Crustacea

D. Onychophora.

**Answer: D**



**Watch Video Solution**

**44.** Which one is a living fossil ?

A. Limulus

B. Peripatus

C. Lepisma

D. Pediculus.

**Answer: A**



**Watch Video Solution**

45. Which character of Peripatus resembles with annelids ?

- A. Body is segmented
- B. Presence of nephridia
- C. Simple eyes
- D. None of the above.

**Answer: B**



**Watch Video Solution**

46. Study of crustaceans is called

- A. Limnology
- B. Cardiology
- C. Chondrology
- D. Carcinology.

**Answer: D**

 [Watch Video Solution](#)

**47.** In crustacea excretion is by

- A. Malpighian tubules
- B. Kidneys
- C. Nephridia
- D. Antennary/green glands.

**Answer: D**

 [Watch Video Solution](#)

**48.** Palamnaeus (Scorpion) belongs to class arachnida because of

A. 4 pairs of legs

B. Chelate legs

C. Sting

D. None.

**Answer: A**



**Watch Video Solution**

**49.** Julus belong to class

A. Insecta

B. Chilopoda

C. Diplopoda

D. Cructancea.

**Answer: C**

 [Watch Video Solution](#)

50. Which is a poisonous arthropod ?

- A. Spider
- B. Scolopendra
- C. Palaeomon
- D. Anopheles.

**Answer: B**

 [Watch Video Solution](#)

51. Which respire by book lungs ?

- A. Spider
- B. Scolopendra



C. Palaeomon

D. Anopheles.

**Answer: A**



**Watch Video Solution**

**52. Blood of most arthropods is**

A. Colourless

B. Reddish

C. Bluish

D. Yellow

**Answer: A**



**Watch Video Solution**

53. Which one is the characteristic of class crustacea ?

- A. Cephalothorax with two pairs of antennae
- B. Gills and green glands
- C. Both A and B
- D. Cephalothorax with one pair of antennae.

**Answer: C**



[Watch Video Solution](#)

54. Select the crustacean

- A. Cockroach
- B. Cyclops
- C. Dragonfly
- D. Butterfly

**Answer: B**

 [Watch Video Solution](#)

**55.** Which is not a crustacean ?

- A. Waterflea
- B. Palaeomon
- C. Crab
- D. Grasshopper.

**Answer: D**

 [Watch Video Solution](#)

**56.** Class arachnida is characterised by

A. A pair each of pedipalpi and chelicerae

B. Four pairs of legs

C. Both A and B

D. Three pairs of legs.

**Answer: C**



**Watch Video Solution**

**57.** Which of the following is not an arachnid

A. Spider

B. Itch Mite

C. Louse

D. Tick.

**Answer: C**

 [Watch Video Solution](#)

58. Myriapoda includes

- A. Diploponds only
- B. Both diplopods and chilopods
- C. Chilopods only
- D. Locusts.

**Answer: B**

 [Watch Video Solution](#)

59. Diplopods (e.g., Millipede) differ from a chilopods (e.g., Centipede) in

- A. Occurrence of two pairs of legs on each segment

B. Presence of pedipalpi

C. Presence of chelicerae

D. Absence of sting.

**Answer: A**



**Watch Video Solution**

**60.** Entomology is the study of

A. Enteron

B. enteric epithelium

C. Insects

D. Arachnids.

**Answer: C**



**Watch Video Solution**

**61.** Phylum Arthropoda is characterised by the presence of :

- A. Jointed appendages
- B. Unjointed appendages
- C. Undeveloped appendages
- D. Absence of appendages.

**Answer: A**

 [Watch Video Solution](#)

**62.** In arthropoda, respiration is accomplished by

- A. Book lungs and gills
- B. Tracheae, book lungs and gills
- C. Tracheae only

D. Tracheae in terrestrial habitat and gills in aquatic habitats.

**Answer: B**

 [Watch Video Solution](#)

**63.** Excretory organs of arthropods are

- A. Green glands
- B. Green gland and malpighian tubules
- C. Malpighian tubules
- D. Nephridia.

**Answer: B**

 [Watch Video Solution](#)



**64.** Scorpion sting is located on

- A. Head
- B. Abdomen tip
- C. Dorsal surface of thorax
- D. Ventral side of abdomen.

**Answer: B**



**Watch Video Solution**

**65.** Scorpions are

- A. Sanguivorous
- B. Carnivorous
- C. Herbivorous
- D. Omnivorous.

**Answer: B**

 [Watch Video Solution](#)

**66.** Itchmite is connected with scabies as

- (a) Pathogen
- (b) Vector
- (c) Parasite
- (d) Intermediate host

A. Pathogen

B. Vector

C. Parasite

D. Intermediate host.

**Answer: C**

 [Watch Video Solution](#)

67. Encephalitis is caused by the bite of

A. Anopheles

B. Culex

C. Aedes

D. Culex and Aedes.

**Answer: D**



[Watch Video Solution](#)

68. The vector of Wuchereria is

A. Anopheles

B. Culex

C. Aedes

D. None of the above.

**Answer: B**

 [Watch Video Solution](#)

**69.** Aedes (a type of mosquitoes) transmits

A. Dengue fever

B. Relapsing fever

C. Malaria

D. None of the above.

**Answer: A**

 [Watch Video Solution](#)

70. Male anopheles differs from female in having

- A. Larger wings
- B. Spotted wings
- C. Larger antennae
- D. Brush like antennae.

**Answer: D**



**Watch Video Solution**

71. Respiratory organs of scorpions are

- A. Lungs
- B. Gills
- C. Book lungs
- D. Ctenidia.

**Answer: C**

 [Watch Video Solution](#)

**72.** Larva of Housefly is known as

- A. Maggot
- B. Grub
- C. Caterpillar
- D. Naiad.

**Answer: A**

 [Watch Video Solution](#)

**73.** The period in between the 2 moults of insects is

A. Stadium

B. Instar

C. Incubation

D. None of the above.

**Answer: A**



**Watch Video Solution**

**74.** Formicarium is the nest of

A. Termites

B. Ants

C. Wasps

D. Honey bees.

**Answer: B**

 [Watch Video Solution](#)

75. Apiculture is

- A. Culture of silk worms
- B. Culture of honey bees
- C. Culture of ants
- D. Culture of termites.

**Answer: B**

 [Watch Video Solution](#)

76. Which is sanguivorous

- A. Cimex
- B. Apis



C. Musca

D. Blatta

**Answer: A**



**Watch Video Solution**

**77. Which belongs to Holometabola ?**

A. May fly

B. pediculus

C. Butter fly

D. Lepisma.

**Answer: C**



**Watch Video Solution**

78. Hemimetabolous metamorphosis is found in

- A. Anopheles
- B. Musca
- C. Dragon flies
- D. Butter flies.

**Answer: C**



**Watch Video Solution**

79. Eggs of Anopheles are

- A. Singly laid with air floats
- B. Singly laid without air floats
- C. Laid in groups with float
- D. Laid in groups without float.

**Answer: A**



**Watch Video Solution**

**80.** Aquatic larva of mosquitoes is popularly called

A. Maggot

B. Grub

C. Wiggler

D. Naiad

**Answer: C**



**Watch Video Solution**

**81.** Vector insects are which

- A. Spread disease
- B. Destroy crop
- C. Spoil soil
- D. Act as scavengers.

**Answer: A**

 [Watch Video Solution](#)

**82.** Anopheles eggs are

- A. Rounded without floats
- B. Boat-shaped with floats
- C. Rounded with floats
- D. Boat-shaped without floats.

**Answer: B**



[Watch Video Solution](#)

83. The most economic insect is

- A. Silver fish
- B. Desert locust
- C. Bombyx mori
- D. Dragon fly.

**Answer: C**



[Watch Video Solution](#)

84. The home of white ant is known as

- A. Mole hill
- B. Hive

C. Termitarium

D. Sanatorium.

**Answer: C**



**Watch Video Solution**

**85.** Rice bug emits unpleasant odour from its scent glands located in

A. Thorax

B. Head

C. Abdomen

D. Legs.

**Answer: C**



**Watch Video Solution**

**86.** Paddy bug attacks Rice plants

- A. In seedling stage
- B. Milk grain stage
- C. Ripe grain stage
- D. All the above.

**Answer: B**



**Watch Video Solution**

**87.** During non-paddy season, Rice bug subsists on

- A. Grass
- B. Sugarcane
- C. Maize or Sorghum
- D. All the above.

**Answer: D**

 [Watch Video Solution](#)

**88.** *Leptocorisa varicornis* has mouth parts

- A. Cutting and chewing
- B. Piercing and sucking
- C. Sponging
- D. Siphoning.

**Answer: B**

 [Watch Video Solution](#)

**89.** *Balanus* differs from *Lepas* in being



A. Sessile

B. Stalked

C. Absence of cement glands

D. Absence of mantle.

**Answer: A**



**Watch Video Solution**

**90.** Cement glands of Lepas and Balanus open over

A. Antennules

B. Antennae

C. Maxillae

D. Maxillules.

**Answer: A**

 [Watch Video Solution](#)

**91.** Barnacles feed on

- A. Other crustaceans
- B. Worms
- C. Microorganisms
- D. All types of animals.

**Answer: C**

 [Watch Video Solution](#)

**92.** Barnacles are pests of

- A. Crop plants
- B. Fruit trees

C. Marine plants

D. Ships and hard shelled animals.

**Answer: D**



**Watch Video Solution**

**93.** Squilla is a

A. Arachnid

B. Crustacean

C. Chilopod

D. Insect

**Answer: B**



**Watch Video Solution**

94. In Squilla, respiration occurs through

- A. Book lungs
- B. Tracheae
- C. Gills
- D. Book gills.

**Answer: C**



[Watch Video Solution](#)

95. Triops/Amphipod is

- A. Marine Crustaceans
- B. Fresh water Crustaceans
- C. Fresh water arachnid
- D. Terrestrial arachnid.

**Answer: B**

 [Watch Video Solution](#)

**96.** Which one is Tadpole Shrimp (Tadpole Fish) ?

A. Lepus

B. Squilla

C. Balanus

D. Triops.

**Answer: D**

 [Watch Video Solution](#)

**97.** Triops commonly multiplies through

- A. Sexually
- B. Asexually
- C. Parthenogenetically
- D. All the above.

**Answer: C**

 [Watch Video Solution](#)

**98.** Peripatus is a connected link between

- A. Annelida and Arthropoda
- B. Mollusca and Arthropoda
- C. Annelida and Mollusca
- D. Coelenterata and Platyhelminthes.

**Answer: A**

 [Watch Video Solution](#)

99. Mouth parts of a butterfly are of type

- A. Sponging
- B. Siphoning
- C. Piercing and sucking
- D. Chewing and sucking.

**Answer: B**

 [Watch Video Solution](#)

100. Which of the following is a matching pair of the vector and the disease ?

- A. Sandfly- Plague

B. Culex-filariasis/Elephantiasis

C. Body Louse-Typhoid

D. Housefly-Yellow Fever.

**Answer: B**

 [Watch Video Solution](#)

**101.** Silk industry is related to

A. Apiculture

B. Pisciculture

C. Sericulture

D. Horticulture.

**Answer: C**

 [Watch Video Solution](#)



**102.** Periplaneta shows

- A. Complete metamorphosis
- B. Incomplete metamorphosis
- C. No metamorphosis
- D. Gradual metamorphosis.

**Answer: D**

 [Watch Video Solution](#)

**103.** In Arthropoda, the body cavity is called

- A. Enteron
- B. Pseudocoel
- C. Haemocoel

D. Coelom.

**Answer: C**

 [Watch Video Solution](#)

**104.** Ecdysone/moulting hormone is produced by

A. Prothoracic gland

B. Corpora allata

C. Corpora cardiaca

D. Abdominal gland

**Answer: A**

 [Watch Video Solution](#)

**105.** Mouth parts of Housefly are of

- A. Sponging
- B. Siphoning
- C. Piercing and sucking
- D. Biting and chewing.

**Answer: A**



**Watch Video Solution**

**106.** In insects, respiratory gas exchange occurs through

- A. Diffusion through surface
- B. Tracheal tubes
- C. Respiratory pigment through blood
- D. Gills.

**Answer: B**

 [Watch Video Solution](#)

**107.** Silk thread is obtained from silk moth during

- A. Pupal/cocoon state
- B. Larval state
- C. Nymph state
- D. Adult state.

**Answer: A**

 [Watch Video Solution](#)

**108.** Natural parthenogenesis is found in

A. Pheretima

B. Frog

C. Star Fish

D. Honey Bee.

**Answer: D**



**Watch Video Solution**

**109.** Johnston's organ occurs in

A. Antenna of Mosquito

B. Head of Cockroach

C. Abdomen of Housefly

D. Abdomen of spider.

**Answer: A**

 [Watch Video Solution](#)

110. Fish which can be used in biological control of mosquitoes/larvicidal fish is

- A. Eel
- B. Carp
- C. Cat Fish
- D. Gambusia

**Answer: D**

 [Watch Video Solution](#)

111. Which one of the following diseases is spread by housefly?

- A. Dengue fever

B. Encephalitis

C. Filariasis

D. Gangrene.

**Answer: D**

 [Watch Video Solution](#)

**112.** Mouth parts of cockroach are :

A. Piercing and sucking

B. Sucking and siphoning

C. Cutting and biting type

D. Sucking and resping

**Answer: C**

 [Watch Video Solution](#)

**113.** Lepisma is

- A. Mammal
- B. Insect/Arthropod
- C. Fish
- D. Echinoderm.

**Answer: B**



**Watch Video Solution**

**114.** In Cockroach, metamorphosis and moulting are controlled by secretion of

- A. Corpus luteum
- B. Corpora allata



C. Corpus callosum

D. Corpus spongiosum.

**Answer: B**



**Watch Video Solution**

**115.** Bee dances are meant for

A. Courtship

B. Communication

C. Recreation

D. Instinct.

**Answer: B**



**Watch Video Solution**

**116.** In hot summer and cold winter, the number of malaria cases as well as *Anopheles* declines, reappearance of malaria in humid warm conditions is due to

- A. Surviving malarial parasites in human carriers
- B. Surviving sporozoites in surviving mosquitoes
- C. Monkeys
- D. Mosquito larvae in permanent waters.

**Answer: A**

 [Watch Video Solution](#)

**117.** Housefly feeds on sugar by

- A. Crushing its crystals and then sucking the powder
- B. Crushing and eating

C. Sucking

D. Dissolving in saliva and sucking.

**Answer: D**



**Watch Video Solution**

**118.** A characteristic feature of insects is

(a) antennae

(b) 3 pairs of legs

(c) 1 pair of compound eyes

(d) 2 pairs of wings

A. Three pairs of legs

B. A pair of compound eyes

C. Chitinous exoskeleton

D. Segmented body.

**Answer: A**

 [Watch Video Solution](#)

**119.** Malpighian tubules are

- A. Excretory organs of insects
- B. Excretory organs of annelids
- C. Respiratory organs of insects
- D. Respiratory organs of annelids.

**Answer: A**

 [Watch Video Solution](#)

**120.** Kala-azar and oriental sore are spread by

A. Housefly

B. Bed Bug

C. Sand Fly

D. Fruit fly

**Answer: C**



**Watch Video Solution**

**121. Mouth parts of Mosquito are of**

A. Siphoning type

B. Piercing and sucking type

C. Sponging type

D. Cutting and chewing.

**Answer: B**

 [Watch Video Solution](#)

**122.** Male and female cockroaches can be distinguished externally by

- A. Anal styles in male
- B. Anal cerci in female
- C. Anal style and antennae in females
- D. Both B and C.

**Answer: A**

 [Watch Video Solution](#)

**123.** Metamorphosis of insects is regulated through hormone

- A. Pheromone
- B. Thyroxine

C. Ecdysone

D. All the above.

**Answer: C**



**Watch Video Solution**

**124.** Which of the following insects is regarded as greatest mechanical carrier of diseases?

A. Pediculus

B. Cimex

C. Musca

D. Xenopsylla

**Answer: C**



**Watch Video Solution**

**125.** which is not a member of class insecta

A. Musca

B. Cockroach

C. Louse

D. Spider

**Answer: D**



**Watch Video Solution**

**126.** Male Mosquito feeds on

A. Human blood

B. Flower sap

C. Garbage

D. All the above.



**Answer: B**



**Watch Video Solution**

**127. Bed Bug spreads**

- A. Yellow fever
- B. Typhoid
- C. Trench fever
- D. Typhus.

**Answer: D**



**Watch Video Solution**

**128. The major excretory product of arthropods is**

A. Ammonia

B. Urea

C. Uric acid

D. Trimethylamine oxide.

**Answer: C**



**Watch Video Solution**

**129.** Yellow fever is transmitted by

A. Culex

B. Aedes

C. Anopheles

D. Bed Bug.

**Answer: B**



[Watch Video Solution](#)

**130.** Adult Culex and Anopheles can be distinguished with the help of

- A. Mouth parts/colour
- B. Sitting posture
- C. Antennae/wings
- D. Feeding habits.

**Answer: B**



[Watch Video Solution](#)

**131.** A larval stage occurs in the life history of all members of the group

- A. Frog, Lizard and Cockroach

B. Ascaris, Housefly and Frog

C. Housefly, Earthworm and Mosquito

D. Butterfly, Frog and Mosquito.

**Answer: D**

 [Watch Video Solution](#)

**132.** Difference between male and female Anopheles occurs in

A. Proboscis

B. Wings

C. Antennae

D. Size.

**Answer: C**

 [Watch Video Solution](#)

**133.** Spiders and Scorpions belong to class

- A. Arachnida
- B. Anthozoa
- C. Crustacea
- D. Onychophora.

**Answer: A**

 [Watch Video Solution](#)

**134.** Trachea of cockroach and mammal are similar in having

- A. Paried nature
- B. Noncollapsible walls
- C. Ciliated inner lining

D. Origin from head.

**Answer: B**

 [Watch Video Solution](#)

**135.** Out of pneumonia, gangrene, yellow fever, dengue fever, malaria and elephantiasis, mosquitoes transmit diseases

A. 6

B. 4

C. 3

D. 2

**Answer: B**

 [Watch Video Solution](#)

**136.** Which of feature is common to leech, cockroach and scorpion?

- A. Cocoon
- B. Ommatidia
- C. Dorsal nerve cord
- D. Ventral never cord

**Answer: D**



**Watch Video Solution**

**137.** Jointed appendages are characteristic of phylum

- A. Echinodermate
- B. Annelida
- C. Mollusca
- D. Arthropoda.

**Answer: D**



**Watch Video Solution**

**138.** Pupa occurs in the life cycle of

- A. Cockroach
- B. Housefly
- C. Honey Bee
- D. Earthworm.

**Answer: B**



**Watch Video Solution**

**139.** Vestigial wings occur in



A. Housefly

B. Mosquito

C. Blatta

D. Periplaneta.

**Answer: C**



**Watch Video Solution**

**140.** Insects excrete nitrogen as

A. Uric acid

B. Guanine

C. Urea

D. Ammonia.

**Answer: A**



[Watch Video Solution](#)

**141.** An insect without mandibles is

A. Musca

B. Apis

C. Anopheles

D. Blatta.

**Answer: A**



[Watch Video Solution](#)

**142.** Bubonic plague is transmitted by

A. Bed Bug/Cimex

B. Rat Flea/Xenopsylla

C. Louse/Pediculus

D. Mosquito/Aedes.

**Answer: B**



**Watch Video Solution**

**143.** Basic unit in the eye of cockroach/insect is

A. Retina

B. Rhabdome

C. Corneal facet

D. Ommatidium.

**Answer: D**



**Watch Video Solution**

**144.** Which part of Cockroach has both exoskeleton and endoskeleton ?

- A. Head
- B. Thorax
- C. Abdomen
- D. All the above.

**Answer: A**

 [Watch Video Solution](#)

**145.** Wings in cockroach do not arise from :

- A. Prothorax
- B. Mesothorax
- C. Metathorax

D. None of the above.

**Answer: A**

 [Watch Video Solution](#)

**146.** Young cockroach is called

A. Maggot

B. Nymph

C. Ephyra

D. Pupa.

**Answer: B**

 [Watch Video Solution](#)

**147.** The first animals to fly were

A. Mammals

B. Lizards

C. Birds

D. Insects.

**Answer: D**



**Watch Video Solution**

**148.** Common House fly (*Musca nebulosa*) lays eggs on

A. Cow/Horse dung

B. Stagnant water

C. Hanging ropes

D. Open meats and sweets.

**Answer: A**



**Watch Video Solution**

**149.** Which is a connecting link

A. Limulus

B. Peripatus

C. Periplanata

D. Pila.

**Answer: B**



**Watch Video Solution**

**150.** Which is nonpoisonous

- A. Scorpion
- B. Centipede
- C. Crab
- D. Spider.

**Answer: C**

 [Watch Video Solution](#)

**151. Pollen basket occurs in Honey Bee on**

- A. Prothoracic leg
- B. Mesothoracic leg
- C. Metathoracic leg
- D. Union of thorax and abdomen.

**Answer: C**



 [Watch Video Solution](#)

**152.** In Honey Bee, barbless sting occurs in

- A. Workers
- B. Queen Bee
- C. Drone
- D. In all the three

**Answer: B**

 [Watch Video Solution](#)

**153.** Which one is tracheate group?

- A. King Carb-Scorpion-Housefly
- B. Crab-Centipede-Cockroach

C. spider-Peripatus-Mosquito

D. Bed Bug-Sandfly-Silkworm.

**Answer: D**

 [Watch Video Solution](#)

**154.** In which bee, the wax glands are present in

A. Workers

B. Drone

C. Queen Bee

D. Both Queen and Worker bees.

**Answer: A**

 [Watch Video Solution](#)

**155.** Lac is a product of

- A. Faecal matter
- B. Secretion from body
- C. Excretion from body
- D. Excess food oozing out of the body.

**Answer: B**



**Watch Video Solution**

**156.** Filaria is spread by

- A. Bed Bug
- B. Mosquito
- C. Housefly
- D. Flea.

**Answer: B**



[Watch Video Solution](#)

**157.** What is the similarity between fly, mosquito and cockroach

- A. Open excretory system
- B. Two pairs of wings
- C. All belong to class insecta
- D. 13- chambered heart.

**Answer: C**



[Watch Video Solution](#)

**158.** Arrhenotoky is parthenogenetic development found in

A. All insects

B. Mosquitoes

C. Butterflies

D. Honey Bees, Wasps and Ants.

**Answer: D**



**Watch Video Solution**

**159.** Sandfly is

A. Acyclostoma

B. Musca

C. Phebotomus

D. Drosophila.

**Answer: C**

 [Watch Video Solution](#)

**160.** Tick the correct matching

- A. Arachnida - Ticks, Mites
- B. Prototheria - Scaly Anteater
- C. Procaryotes - Green Algae
- D. Annelida - Ascaris, Taenia

**Answer: A**

 [Watch Video Solution](#)

**161.** Which ones posses larval stages ?

- A. Cockroach and Housefly
- B. Housefly and Butterfly

C. Cockroach and Honey Bee

D. Grasshopper and Dragonfly.

**Answer: B**



**Watch Video Solution**

**162.** Honey-bees exhibit a dance to communicate location of food. It is

A. Break-dance

B. Woggle dance

C. Top dance

D. Round and waggle dance

**Answer: D**



**Watch Video Solution**

**163.** In Butterfly, long coiled siphoning tube is formed from

- A. Labrum
- B. Maxilla
- C. Labium
- D. Mandibles

**Answer: B**



**Watch Video Solution**

**164.** Which one is best silk ?

- A. Tassar silk
- B. Eri silk
- C. Mulberry silk
- D. Both A and B.



**Answer: C**

 [Watch Video Solution](#)

**165.** In a colony of honey bee family there are

- A. One queen and a few drones
- B. One queen, 10 -100 drones and 20000-80000 workers
- C. Two queens, 5-10 drones and 20000-workers
- D. No queen, 10-20 drones and 80000 workers.

**Answer: B**

 [Watch Video Solution](#)

**166.** In Honey bee drones (males) are produced from

A. Larvae fed on royal jelly

B. Fasting larvae

C. Fertilized eggs

D. Unfertilised eggs.

**Answer: D**

 [Watch Video Solution](#)

**167.** Endocrine glands of insects which secrete juvenile hormone are

A. Corpora allata

B. Corpora albicans

C. Corpora myecaene

D. All the above.

**Answer: A**

 [Watch Video Solution](#)

**168.** What is true about earthworm, scorpion, cockroach, and silverfish?

- A. Compound eyes
- B. Jointed legs
- C. Poison glands
- D. Metamorphosis.

**Answer: B**

 [Watch Video Solution](#)

**169.** Honey is

- A. Alkaline

B. Acidic

C. Neutral

D. Basic after some days.

**Answer: C**



[Watch Video Solution](#)

**170.** Which is presently most inflective ?

A. Aedes

B. Anopheles

C. Culex

D. Trilobite

**Answer: B**



[Watch Video Solution](#)

**171.** Trilobites evolved in

- A. Precambrian
- B. Ordovician
- C. Silurian
- D. Cambrian

**Answer: D**



**Watch Video Solution**

**172.** Which one is incorrect match ?

- A. Xenopsylla-Plague
- B. Pediculus-Typhoid
- C. Culex-Malaria

D. Stegomyia-Yellow Fever.

**Answer: C**

 [Watch Video Solution](#)

**173.** Rocky Mountain Fever is spread by

A. Tick

B. Housefly

C. Cockroach

D. Mosquito.

**Answer: A**

 [Watch Video Solution](#)

**174.** Silk is a product of

- A. *Laccifera indica*
- B. *Nosema bombycis*
- C. *Bombyx mori*
- D. *Apis dorsata*.

**Answer: C**



**Watch Video Solution**

**175.** Mature larve of Housefly is

- A. Caterpillar
- B. Wiggler
- C. Grub
- D. Maggot.

**Answer: D**



**Watch Video Solution**

**176.** Metamorphosis of Butterfly, Housefly and Mosquito is

- A. Ametabola
- B. Holometabola
- C. Hemimetabola
- D. Paurometabola.

**Answer: B**



**Watch Video Solution**

**177.** A useful insect which no longer occurs in wild is



- A. *Laccifera indica*
- B. *Drosophila melanogaster*
- C. *Musca nebulosa*
- D. *Bombyx mori*

**Answer: D**

 [Watch Video Solution](#)

**178.** Structure common to Housefly and Cockroach is

- A. Chitinous exoskeleton
- B. Two pairs of wings
- C. Filamentous antennae
- D. Sponging mouth parts.

**Answer: A**



[Watch Video Solution](#)

**179.** Dengue (the break-bone fever) is spread by

- A. Anopheles
- B. Aedes
- C. Culex
- D. Musca.

**Answer: B**



[Watch Video Solution](#)

**180.** If juvenile hormone is absent when silkworm moults, it will

- A. Mould into another larval stage
- B. Mould into pupa

C. Moulting into adult

D. Die.

**Answer: B**



**Watch Video Solution**

**181.** Silk fibre contains protein

A. Fibroin and sericin

B. Collagen and elastin

C. Fibrin and sericin

D. Chondrin and mucin.

**Answer: A**



**Watch Video Solution**

**182.** which is absent in arthropoda ?

- A. Compound eye
- B. Chitinous exoskeleton
- C. Closed blood vascular system
- D. Malpighian tubules.

**Answer: C**

 [Watch Video Solution](#)

**183.** Vector of Malaria is

- A. Male Culex
- B. Female Anopheles
- C. Female Aedes
- D. Female Culex.

**Answer: B**



**Watch Video Solution**

**184.** A class with the largest number of animals is

A. Mammalia

B. Insecta

C. Reptilia

D. Pisces.

**Answer: B**



**Watch Video Solution**

**185.** Cray fish is

A. Crustacean

B. Edible fish

C. Poisonous fish

D. Mammal.

**Answer: A**



**Watch Video Solution**

**186.** Swarming is found in

A. Houseflies

B. Mosquitoes

C. Locusts

D. Pyrilla.

**Answer: C**

 [Watch Video Solution](#)

**187.** Limulus belongs to group

- A. Insecta
- B. Crustacea
- C. Merostomata
- D. Onychophora.

**Answer: C**

 [Watch Video Solution](#)

**188.** Cray fish belongs to

- A. Pisces
- B. Mollusca

C. Arthropoda

D. Anthozoa.

**Answer: C**



**Watch Video Solution**

**189.** Green glands are

A. Excretion

B. Respiration

C. Digestion

D. Both A and B.

**Answer: A**



**Watch Video Solution**



190. Most common silkworm of India is

- A. *Bombyx mori*
- B. *Antheraea assamensis*
- C. *Antheraea roylei*
- D. *Antheraea paphia*.

**Answer: A**



[Watch Video Solution](#)

191. Honey bee species reared most widely in india is

- A. *Apis mellifera*
- B. *Apis dorsata*
- C. *Apis indica*
- D. *Apis florea*.

**Answer: C**

 [Watch Video Solution](#)

**192.** Wings are vestigial in

- (a) Male Blatta
- (b) Female Blatta
- (c) Male Periplaneta
- (d) Female Periplaneta

A. Male anopheles

B. Female Anopheles

C. Male Blatta

D. Female Blatta.

**Answer: D**

 [Watch Video Solution](#)

**193.** A respiratory pigment is absent in

A. Earthworm

B. Frog

C. Rabbit

D. Cockroach.

**Answer: D**



**Watch Video Solution**

**194.** Anal style is present in

A. Male Cockroach

B. Female Cockroach

C. Both the sexes

D. None of the two.

**Answer: A**

 [Watch Video Solution](#)

**195.** Pseudotrachea of Housefly is formed by

A. Labella

B. Rostrum

C. Haustellum

D. Basiproboscis.

**Answer: A**

 [Watch Video Solution](#)

**196.** Vectors are

- A. Physalia, Musca domestica and Anopheles
- B. Amoeba, Physalia and Musca
- C. Anopheles, Musca and Culex
- D. All the above.

**Answer: C**



**Watch Video Solution**

**197.** Corpora allata are removed from a nymph. It will

- A. Remain nymph for life
- B. Become adult
- C. Change to next nymph immediately but will remain in that state
- D. Die after some time.

**Answer: B**



**Watch Video Solution**

**198.** In insects, ecdysone takes part in

- A. Growth and development
- B. Maturation into adult
- C. Moulting till pupa is formed
- D. Secretion of cuticle in adult.

**Answer: C**



**Watch Video Solution**

**199.** Aedes is vector of

A. Plague

B. Malaria

C. Filaria

D. Encephalitis and Dengue.

**Answer: D**



**Watch Video Solution**

**200.** Antennae of Cockroach have

A. Gustatory receptors

B. Auditory receptors

C. Tactile receptors

D. Tactile and olfactory receptors.

**Answer: D**

 [Watch Video Solution](#)

**201.** Which is wrong for an insect

- A. Cephalization and unjointed appendages
- B. Chitinous exoskeleton and wings
- C. Ceohalisation and complete metamorphosis
- D. Well developed sensory organs and haemocoel.

**Answer: A**

 [Watch Video Solution](#)

**202.** Millipede (Julus) and Centipede Centipede (Sclopendra) are both included under

- A. Arachnida



B. Myriapoda

C. Scaphopoda

D. Pelecypoda.

**Answer: B**

 [Watch Video Solution](#)

**203.** Which one is correct pair ?

A. Echinodermate- Cuttle Fish

B. Arthropoda - Silver Fish

C. Mollusca- Star Fish

D. Pisces- Jelly Fish.

**Answer: B**

 [Watch Video Solution](#)

**204.** The order of metamorphosis in housefly is

- A. Egg, nymph, pupa and adult
- B. Egg, larva, nymph and adult
- C. Egg, larva, pupa and adult
- D. Egg, pupa, larva and adult

**Answer: C**



**Watch Video Solution**

**205.** Honey is acidic and mainly consists of

- A. Monosaccharides
- B. Disaccharides
- C. Polysaccharides

D. Fats.

**Answer: A**

 [Watch Video Solution](#)

**206.** Hind wings of Mosquito/Housefly are represented by

- A. Elytra
- B. Halteres
- C. Tentorium
- D. Coxa.

**Answer: B**

 [Watch Video Solution](#)

**207.** Life span of worker honey bee

- A. 10 days
- B. 15 days
- C. 6 weeks
- D. 10 weeks

**Answer: D**



**Watch Video Solution**

**208.** Spider prepare the web with the help to

- A. Legs
- B. Mouth
- C. Spinnerets
- D. Salivary glands.

**Answer: C**

 [Watch Video Solution](#)

**209.** Silk gland pore is situated on

- A. Endopodite of first maxilla
- B. Endopodite of second maxilla
- C. Prostheda of mandible
- D. Anterior part of hypropharynx.

**Answer: D**

 [Watch Video Solution](#)

**210.** Which scientist decoded the language of honey bee and was awarded Nobel prize for his work?

A. C. Darwin

B. K.V. Frisch

C. W. Harvey

D. H.G. Khorana.

**Answer: B**



**Watch Video Solution**

**211. Disease caused by female Culex is**

A. Filaria

B. Pneumonia

C. Malaria

D. Typhoid.

**Answer: A**

 [Watch Video Solution](#)

**212.** Open circulatory system is not of physiological hindrance in Cockroach because

- A. Heart is simple but chambered
- B. Blood is colourless
- C. Circulatory and respiratory system are not connected
- D. Excretion occurs through malpighian tubules.

**Answer: C**

 [Watch Video Solution](#)

**213.** Larva of 'Culex' floats on surface of water with its head

- A. Directed upwards

B. Directed downwards

C. Parallel to surface

D. Attached to surface of water.

**Answer: B**

 [Watch Video Solution](#)

**214.** Female Silk Moth lays

A. 50-100 eggs

B. 200-250 eggs

C. 350-400 eggs

D. 800-1000 eggs.

**Answer: C**

 [Watch Video Solution](#)



**215.** Arthropoda is characterised by

- A. Triploblastic, bilateral symmetry and abdominal appendages
- B. Bilateral symmetry and pair of wings
- C. Acoelomate and radial symmetry
- D. Exoskeleton, metmeric segmentation and jointed appendages.

**Answer: D**

 [Watch Video Solution](#)

**216.** Open circulatory system is found in

- A. Man
- B. Insects/Cockroach
- C. Reptiles

D. Aves.

**Answer: B**

 [Watch Video Solution](#)

**217.** Hard exoskeleton cephalothorax and gills for respiration are characteristics of

- A. Insecta
- B. Myriapoda
- C. Polychaeta
- D. Crustacea.

**Answer: D**

 [Watch Video Solution](#)

**218.** Palaemon (Prawn) is a

- A. Insect
- B. Crustacean
- C. Soft shelled molluse
- D. Fish.

**Answer: B**



**Watch Video Solution**

**219.** Arachnida contains

- A. Wasps
- B. Insects
- C. Spiders
- D. Beetles.

**Answer: C**



**Watch Video Solution**

**220.** If the honey bee is performing round dance it is conveying the information of food source from the hive at a distance of

- A. 50 m
- B. 100 m
- C. 1000 m
- D. 2000 m.

**Answer: A**



**Watch Video Solution**

**221.** Life cycle of Mulberry Silkworm is completed in

A. 20 days

B. 30 days

C. 35 days

D. 45 day.

**Answer: D**



**Watch Video Solution**

**222.** India's ranking on Mulberry Silk production is

A. Fourth

B. Third

C. Second

D. First

**Answer: C**

 [Watch Video Solution](#)

**223.** Which is true about bees

- A. *Apis indica* is the largest species in India
- B. Bees wax is a wasteful product
- C. Honey has glucose and arabinose as main constituents
- D. Communication in bees was first studied by Frisch.

**Answer: D**

 [Watch Video Solution](#)

**224.** *Ascaris* and Cockroach resemble each other in

- A. Pseudocoel
- B. Sexual dimorphism

C. Nephridia

D. Dorsal tubular nerve cord.

**Answer: B**



**Watch Video Solution**

**225.** Which among the following is a social insect

A. White Ants

B. Locusts

C. Bed Bugs

D. Mosquitoes.

**Answer: A**



**Watch Video Solution**

226. One pair of wings occurs in

A. Dragonfly

B. Housefly

C. Mayfly

D. Butterfly.

**Answer: B**



[Watch Video Solution](#)

227. An arthropod without a true head is

A. Bed Bug

B. Louse

C. Butterfly

D. Tick.



**Answer: D**

 [Watch Video Solution](#)

**228.** Antennae are absent in

- A. Housefly
- B. Mosquito
- C. Silkworm
- D. Tick.

**Answer: D**

 [Watch Video Solution](#)

**229.** Body of insect is divisible into

- A. Head, thorax and abdomen
- B. Head, trunk and abdomen
- C. Cephalothorax, head and abdomen
- D. Trunk, thorax and abdomen.

**Answer: A**

 [Watch Video Solution](#)

**230.** Arthropods lack

- A. Jointed appendages
- B. Cilia
- C. Respiratory organs
- D. Segmented body.

**Answer: B**

 [Watch Video Solution](#)

**231.** Mouth parts of male anopheles/mosquito are of type

- A. Rasping and sucking
- B. Piercing and sucking
- C. Biting and sucking
- D. Biting and chewing.

**Answer: B**

 [Watch Video Solution](#)

**232.** In insects, pheromone is secreted by

- A. Corpus callosum
- B. Corpus luteum

C. Corpus albicans

D. Corpus allata.

**Answer: D**



**Watch Video Solution**

**233.** Cocoon is made of protein

A. Myosin

B. Fibroin

C. Tubulin

D. Sericin.

**Answer: B**



**Watch Video Solution**

**234.** Hometaboly is found in

- A. Lady bird Beetle
- B. Bed Bug
- C. Cockroach
- D. Grass Hopper

**Answer: A**



**Watch Video Solution**

**235.** In India maximum silk is produced by

- A. Gujarat
- B. Kerala
- C. Karnataka
- D. Assam.

**Answer: C**

 [Watch Video Solution](#)

**236.** Maggot of Housefly is

- A. Pupa
- B. Larva
- C. Chrysalis
- D. Imago.

**Answer: B**

 [Watch Video Solution](#)

**237.** Which is wrong about Bee colony

- A. Sex differentiation is based on haplodiploidy
- B. Female dominated society
- C. Domesticated species are *A. indica* and *A. mellifera*
- D. Fertilized eggs develop into sterile females only.

**Answer: D**

 [Watch Video Solution](#)

**238.** Which is the characteristic of class crustacea ?

- A. Cephalothorax, biramous appendages and gills
- B. Head and thorax, book lungs and chitinous exoskeleton
- C. Cephalothorax, book lungs and chitinous exoskeleton
- D. Head and thorax, biramous appendages and book lungs.

**Answer: A**

 [Watch Video Solution](#)

**239.** Arthropoda is differentiated from annelids by

- A. Segmented body
- B. Absence of nephridia
- C. Eyes
- D. None of the above.

**Answer: B**

 [Watch Video Solution](#)

**240.** A vertebrate virus which replicates in an arthropod is

- A. Limulus
- B. Peripatus



C. Daphnia

D. Lepisma.

**Answer: B**



**Watch Video Solution**

**241.** The larva of *Bombyx mori* is known as

A. Caterpillar

B. Trochophore

C. Nymph

D. Cocoon.

**Answer: A**



**Watch Video Solution**

**242.** Paurometaboly is

- A. Complete metamorphosis
- B. Gradual metamorphosis
- C. Incomplete metamorphosis
- D. complete metabolism.

**Answer: B**



**Watch Video Solution**

**243.** Waggle dance in Honey Bee represents

- A. Distance of food source
- B. Direction of food source
- C. Both distance and direction of food source
- D. Distance and direction of enemy.

**Answer: C**

 [Watch Video Solution](#)

**244.** Arachnida, Crustacea, Myriapoda and Insecta are classes of

A. Platyhelminthes

B. Annelida

C. Mollusca

D. Arthropoda.

**Answer: D**

 [Watch Video Solution](#)

**245.** Common feature amongst silver Fish, crab, cockroach and Honey Bee is

- A. Poison glands
- B. Jointed legs
- C. Compound eyes
- D. Metamorphosis.

**Answer: B**

 [Watch Video Solution](#)

**246.** Mandibles are reduced and functionless in

- A. Cockroach
- B. Mosquito
- C. Bed Bug
- D. Butterfly.

**Answer: D**

 [Watch Video Solution](#)

247. Which is not economically useful

- A. *Apis dorsata*
- B. Lac insect
- C. *Bombyx mori*
- D. *Lepisma*.

**Answer: D**

 [Watch Video Solution](#)

248. Spider occurring in Uttarakhand belongs to same class as that of

- A. Tick
- B. Centipede

C. Peripatus

D. Cockroach.

**Answer: A**



**Watch Video Solution**

**249.** Number of moults undergone by caterpillar of *Bombys mori* is

A. 2

B. 4

C. 6

D. 8

**Answer: B**



**Watch Video Solution**

**250.** Insects are

- A. Ammonotelic
- B. Ureotelic
- C. Uricotelic
- D. Aminotelic.

**Answer: C**



**Watch Video Solution**

**251.** In Cockroach, coelom is

- A. Schizocoel
- B. Enterocoel
- C. Pseudocoel
- D. Absent.

**Answer: A**



**Watch Video Solution**

**252.** Tripedal locomotion occurs in

- A. Kangaroo
- B. Cockroach
- C. Snail
- D. Earthworm.

**Answer: B**



**Watch Video Solution**

**253.** Oak Tassar silkworm is



- A. *Bombyx mori*
- B. *Antheraea ricini*
- C. *Antheraea assama*
- D. *Antheraea roylei*, *A. pernyi*.

**Answer: D**

 [Watch Video Solution](#)

**254.** Tassar silk is obtained from

- A. *Antheraea roylei*/*A. mylitta*
- B. *Bombyx mori*
- C. *Apis indica*
- D. *Apis dorsata*.

**Answer: A**

 [Watch Video Solution](#)

**255.** Book lungs occur in

- A. Earthworm
- B. Insects
- C. Arachnids
- D. Mammals.

**Answer: C**

 [Watch Video Solution](#)

**256.** Match the correct relation as Anopheles to malaria

- A. Plasmodium- malaria
- B. Trypanosoma - kala azar

C. Giardia - diarrhoea

D. Culex- elephantiasis.

**Answer: D**



**Watch Video Solution**

**257.** Number of leg pairs found in Insecta is

A. Two

B. Three

C. Four

D. Five.

**Answer: B**



**Watch Video Solution**

258. Open blood circulation is found in

- A. Earthworm
- B. Cockroach/Prawn
- C. Humans
- D. Cows.

**Answer: B**



**Watch Video Solution**

259. Haemocoel occurs in

- A. Coelenterata
- B. Porifera
- C. Annelida
- D. Arthropoda.

**Answer: D**

 [Watch Video Solution](#)

**260.** Salivary duct of cockroach opens at

- A. Hypopharynx
- B. Epipharynx
- C. Left mandible
- D. Right mandible.

**Answer: A**

 [Watch Video Solution](#)

**261.** In insects, respiratory gas exchange occurs through

A. Gills

B. Tracheae

C. Skin

D. Lungs

**Answer: B**

 **Watch Video Solution**

**262.** Match the columns and choose the exact combination

- |                |                                       |
|----------------|---------------------------------------|
| (a) Ommatidia  | (i) Articulation with thorax          |
| (b) Trochanter | (ii) For vision                       |
| (c) Coxa       | (iii) Forming exoskeleton             |
| (d) Sclerites  | (iv) Fused with large and stout femur |

A. a-(iv) b-(iii) c-(i) d-(ii)

B. a-(i) b-(ii) c-(iii) d-(iv)

C. a-(ii) b-(iv) c-(i) d-(iii)

D. a-(iii) b-(i) c-(ii) d-(iv)

**Answer: C**

 [Watch Video Solution](#)

**263.** Acarology is study of

A. Coral reefs

B. Mollusca

C. Fossils

D. Ticks and Mites.

**Answer: D**

 [Watch Video Solution](#)

**264.** Peritrophic membrane is secreted in cockroach by

- A. Tracheal tubes
- B. Mesenteron
- C. Brood pouch
- D. Salivary glands.

**Answer: B**



**Watch Video Solution**

**265.** In Cockroach, glands present between 5th and 6th abdominal segments are

- A. Blood
- B. Pharyngeal
- C. Salivary



D. Stink

**Answer: D**

 [Watch Video Solution](#)

**266.** Complete metamorphosis occurs in

- A. Housefly and Cockroach
- B. Mosquito and Cockroach
- C. Housefly and Mosquito
- D. Cockroach and Locust.

**Answer: C**

 [Watch Video Solution](#)

**267.** Organ of mastication in cockroach is

A. Mandibles

B. Maxilla

C. Labium

D. Labrum.

**Answer: A**



**Watch Video Solution**

**268.** What is common between earthworm and cockroach?

A. Nephridia

B. Solid ventral nerve cord

C. Cuticle

D. Malpighian tubules.

**Answer: B**



**Watch Video Solution**

**269.** Which is an insect

- A. Mites
- B. Prawn
- C. Moth
- D. Scorpion.

**Answer: C**



**Watch Video Solution**

**270.** Choose the correct match

A. Housefly- yellow fever

B. Body Louse - typhoid

C. Aedes - plague

D. Anopheles- malaria.

**Answer: D**



**Watch Video Solution**

**271. Which of the following respire by gills?**

A. Prawn

B. Crocodile

C. Whale

D. Frog.

**Answer: A**

 [Watch Video Solution](#)

**272.** Insect is distinguishable from crustacean by

- A. Number of eyes
- B. Arrangement of nerve cords
- C. Number of appendages
- D. Presence of wings.

**Answer: C**

 [Watch Video Solution](#)

**273.** Exoskeleton of insects is formed of

- (a) pectin
- (b) chitin

(c) lignin

(d) suberin

A. Coelenterate

B. Arthropoda

C. Mollusca

D. Porifera.

**Answer: B**



**Watch Video Solution**

**274.** Immature statge of housefly is

A. Caterpillar

B. Nymph

C. Grub

D. Maggot.

**Answer: D**

 [Watch Video Solution](#)

**275.** Silver fish belongs to

A. Insecta

B. Mollusca

C. Chordata

D. Echinodermata.

**Answer: A**

 [Watch Video Solution](#)

**276.** Which one does not occur in Cockroach leg ?

- A. Tibia
- B. Femur
- C. Fibula
- D. Coxa.

**Answer: C**



**Watch Video Solution**

**277.** Comma-shaped stage in the life cycle of Mosquito is

- A. Larval stage
- B. Pupal stage
- C. Imago stage
- D. None of the above.



**Answer: B**

 [Watch Video Solution](#)

**278.** Wiggler is larva of

- A. Butterfly
- B. Housefly
- C. Mosquito
- D. Cockroach.

**Answer: C**

 [Watch Video Solution](#)

**279.** Blood does not transport oxygen due to absence of respiratory pigment in

A. Cochroach

B. Earthworm

C. Frog

D. Rabbit.

**Answer: A**



**Watch Video Solution**

**280.** Which one of the following is a matching pair of an animal and a certain phenomenon it exhibits?

A. Pheretima- Sexual dimorphism

B. Musca - complete metamorphosis

C. Chamaeleon - Mimicry

D. Taenia - Polymorphism.

**Answer: B**

 [Watch Video Solution](#)

**281.** Insects having piercing and sucking mouth parts are

- A. Butterflies
- B. Aphids
- C. Houseflies
- D. Fruitflies.

**Answer: B**

 [Watch Video Solution](#)

**282.** Butterflies belong to class

A. Lepidoptera

B. Coleoptera

C. Insecta

D. Arachnida.

**Answer: C**



**Watch Video Solution**

**283.** Scorpion is member of a class to which also belongs

A. Tick

B. Crab

C. Cockroach

D. Barnacle.

**Answer: A**

 [Watch Video Solution](#)

**284.** In which group of arthropoda, the body is divisible into head thorax and abdomen

- A. Myriapoda
- B. Crustacea
- C. Arachnida
- D. Insecta.

**Answer: D**

 [Watch Video Solution](#)

**285.** Spider web is secreted by

- A. Salivary glands

- B. Abdominal glands
- C. Cephalothoracis glands.
- D. None of the above.

**Answer: B**

 [Watch Video Solution](#)

**286.** Beetle larva is

- A. Maggot
- B. Caterpillar
- C. Nymph
- D. Grub.

**Answer: D**

 [Watch Video Solution](#)

**287.** Feature common to Leech, Cockroach and Scorpion is

- A. Ventral nerve cord
- B. Nephridia
- C. Antennae
- D. Cephalisation.

**Answer: A**

 [Watch Video Solution](#)

**288.** A: The honey bee queen copulates only once in her life time.

R: the honey bee queen can lay fertilized as well as unfertilized eggs.

- A. If both are true with reason being correct explanation
- B. Both true but reason is not correct explanation

C. assertion true but reason is wrong

D. and both are wrong

**Answer: B**



**Watch Video Solution**

**289.** Sericteries (silk glands) are modified

A. Intestinal glands

B. Gastric glands

C. Salivary glands

D. Endocrine glands.

**Answer: C**



**Watch Video Solution**



**290.** Silk is obtained from

A. *Laccifera lacca*

B. *Bombyx mori*

C. *Apis mellifera*

D. None of the above.

**Answer: B**



**Watch Video Solution**

**291.** Peculiar pungent smell of Cockroach is secretion of

A. Pheromones

B. *Periplaneta*

C. Dermal gland

D. Cervical glands.

**Answer: C**



**Watch Video Solution**

**292.** The cockroach of genus *Blatta* is also called

- A. German Cockroach
- B. Oriental Cockroach
- C. American Cockroach
- D. Australian Cockroach.

**Answer: B**



**Watch Video Solution**

**293.** Which one secretes lac ?

A. *Antheraea assama*

B. *Bombyx mori*

C. *Lytta*

D. *Tachardia lacca*.

**Answer: D**

 [Watch Video Solution](#)

**294.** Which one belongs to same taxonomic group ?

A. *Papilio*, *Xenopsylla*, *Musca*

B. Starfish, Cat Fish, Cray Fish

C. Tapeworm, Hookworm, Silkworm

D. *Physalia*, solen, *Toredo*.

**Answer: A**

 [Watch Video Solution](#)

**295.** Excretory organ of Crab is

- A. Nephridium
- B. Flame cell
- C. Coxal gland
- D. Malpighian tube.

**Answer: C**

 [Watch Video Solution](#)

**296.** In Honey Bee, drones are

- A. Haploid males
- B. Haploid females

C. Diploid males

D. Diploid females.

**Answer: A**



**Watch Video Solution**

**297.** Which is true ?

A. Silk is extracted from cocoon of moth by boiling

B. Larva of moth secretes silk

C. Salivary glands of moth secrete silk

D. Leaves of Mulberry produce silk.

**Answer: A**



**Watch Video Solution**

**298.** In cockroach, conglobate glands occur in

- A. Females
- B. Males
- C. Nymph
- D. Both A and B.

**Answer: B**

 [Watch Video Solution](#)

**299.** Heart of cockroach is

- A. Myogenic
- B. Neuriomyogenic
- C. Neurogenic
- D. None of the above.

**Answer: C**

 [Watch Video Solution](#)

**300.** Enzyme found in saliva of Cockroach is

- A. Amylase
- B. Cellulase
- C. Chitinase
- D. All the above.

**Answer: A**

 [Watch Video Solution](#)

**301.** In Cockroach enzymes cellulase is produced by

- A. Saliva
- B. Lining cells of midgut
- C. Bacteria in midgut
- D. Cellulose is not metabolised.

**Answer: C**

 [Watch Video Solution](#)

**302.** Which one communicates by means of pheromones ?

- A. Annelids
- B. Gastropods
- C. Insects
- D. Birds.

**Answer: C**





[Watch Video Solution](#)

**303.** Proboscis is the

- A. Hypopharynx
- B. Mandibles
- C. Labium
- D. Glossa

**Answer: D**



[Watch Video Solution](#)

**304.** Giant fresh water prawn is

- A. White Shrimp
- B. Tiger Shrimp

C. Sarine

D. Scampi.

**Answer: D**



**Watch Video Solution**

**305.** Which structure of man is similar to spiracle of cockroach?

A. Nostril

B. Alveoli

C. Bronchiole

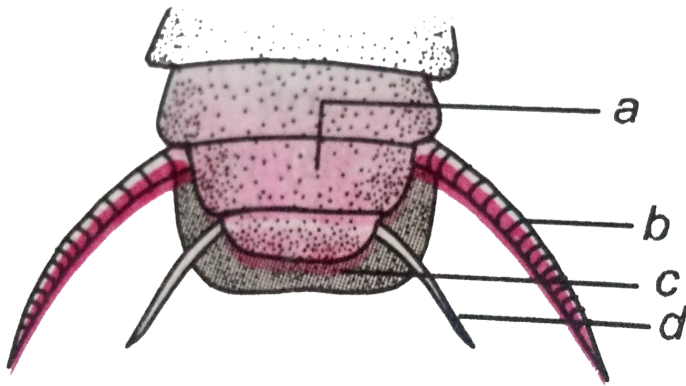
D. Lung.

**Answer: A**



**Watch Video Solution**

306. Diagram represents posterior region of male Cockroach. Choose the correct combination of labelling.



- A. a-9th sternum, b-anal style, c-10th tergum, d-anal circus
- B. a-anal style, b-anal circus, c-10th tergum, d-9th sternum
- C. a-9th sternum, b- anal circus, c-10th tergum, d-anal style
- D. a-9th sternum, b- anal style, c-10th tergum, d-anal circus

**Answer: C**

 [Watch Video Solution](#)

**307.** Insect is distinguishable from crustacean by

- A. Number of appendages
- B. Number of eyes
- C. Presence of wings
- D. Arrangement of nerve cord.

**Answer: A**



**Watch Video Solution**

**308.** Select the wrong statement

- A. Prawn has two pairs of antennae
- B. Millepedes have two pairs of appendages in each segment of the body.
- C. Nematocysts are characteristic of phylum cnidaria

D. Porifers are exclusively marine.

**Answer: D**

 [Watch Video Solution](#)

**309.** Which one of the following features is common in silver fish, scorpion, dragonfly and prawn?

- A. Three pairs of legs and segmented body
- B. Chitinous cuticle and two pairs of antennae
- C. Jointed appendages and chitinous exoskeleton
- D. Cephalothroax and tracheae.

**Answer: C**

 [Watch Video Solution](#)

**310.** Insects have

- A. Two pairs of legs
- B. Three pairs of legs
- C. Four pairs of legs
- D. One pair of legs.

**Answer: B**



**Watch Video Solution**

**311.** Which is Horn Beetle ?

- (a) Tribolium
- (b) Corcyra
- (c) Tragoderma
- (d) None of the above

A. Tribolium

B. Corcyra

C. Tragoderma

D. None of the above.

**Answer: D**

 [Watch Video Solution](#)

**312.** What is present in crustaceans but not in insects ?

A. Paired limbs

B. Two pairs of antennae

C. Bilateral symmetry

D. Chitinous exoskeleton.

**Answer: B**

 [Watch Video Solution](#)

**313.** Two common characters found in Centipede, Cockroach and Crab are

- A. Jointed legs and chitinous exoskeleton
- B. Green glands and tracheae
- C. Book lungs and antennae
- D. Compound eyes and anal cerci.

**Answer: A**

 [Watch Video Solution](#)

**314.** Insects such as butterflies and termites belong to class

- A. Crustacea
- B. Arachnida



C. Insecta

D. Gastropoda.

**Answer: C**



**Watch Video Solution**

**315.** Which one is related to Cockroach ?

(a) Nephridia

(b) Malpighian tubules

(c) Chloragogen cells

(d) Flame cells

A. Nephridia

B. Malpighian tubules

C. Chloragogen cells

D. Flame cells.

**Answer: B**



**Watch Video Solution**

**316.** Caterpillar and maggot are

- A. Larvae
- B. Nymphs
- C. Pupae
- D. Adults.

**Answer: A**



**Watch Video Solution**

**317.** Larva of the mosquito is called

A. Caterpillar

B. Maggot

C. Grub

D. None of the above.

**Answer: D**



**Watch Video Solution**

**318.** Changes involving conversion of larva into adult are

A. Metastasis

B. Metamorphosis

C. Metagenesis

D. Alternation of generations.

**Answer: B**

 [Watch Video Solution](#)

**319.** Which one is correctly matched with the insect and name of rearing phenomenon?

- A. Apiculture - Honey Bee
- B. Pisciculture - silk Moth
- C. Sericulture - fish
- D. Aquaculture - Mosquito.

**Answer: A**

 [Watch Video Solution](#)

**320.** Daphnia is

- (a) Water Flea
- (b) Tadpole Shrimp

(c) Fairy Shrimp

(d) Clam Shrimp

A. Water Flea

B. Tadpole Shrimp

C. Fairy Shrimp

D. Clam Shrimp.

**Answer: A**



**Watch Video Solution**

**321. Mosquito takes in air through**

A. Pedicel

B. Flagellum

C. Cilia

D. None of the above.

**Answer: D**

 [Watch Video Solution](#)

**322.** Lady Bird Beetle is

A. Bird

B. Insect

C. Worm

D. Reptile.

**Answer: B**

 [Watch Video Solution](#)

**323.** Cray fish belongs to

A. Sponges

B. Bird

C. Pisces

D. Arthropoda.

**Answer: D**



**Watch Video Solution**

**324.** Largest number of species occurs in the phylum

A. Annelida

B. Echinodermate

C. Arthropoda

D. Coelenterata.

**Answer: C**

 [Watch Video Solution](#)

**325.** What is true about Nerels, Scorpion, Cockroach and Silver fish?

- A. All possess dorsal heart
- B. None is aquatic
- C. They belong to same phylum
- D. They have jointed paired appendages.

**Answer: A**

 [Watch Video Solution](#)

**326.** Which one shows polymorphism



A. Honey Bee

B. Cockroach

C. Earthworm

D. Frog.

**Answer: A**



**Watch Video Solution**

**327. Swarming of Bees is**

A. Nuptial flight

B. Defence against predator

C. Movement to a new place

D. Response to food shortage.

**Answer: C**



[Watch Video Solution](#)

**328.** Chitinous cuticle forms exoskeleton in

- (a) Annelida
- (b) Echinodermata
- (c) Porifera
- (d) Arthropoda

A. Annelida

B. Echinodermata

C. Porifera

D. Arthropoda.

**Answer: D**



[Watch Video Solution](#)

**329.** Honey Bee belongs to

- (a) Apis
- (b) Daphnia
- (c) Leptocorisa
- (d) Limulus

A. Apis

B. Daphnia

C. Leptocorisa

D. Limulus.

**Answer: A**



**Watch Video Solution**

**330.** Common name of paddy pest Leptocorisa is

- (a) Silver fish

(b) Water flea

(c) Gandhi Poka

(d) Cray fish

A. Silver fish

B. Water flea

C. Gandhi Poka

D. Cray fish.

**Answer: C**

 [Watch Video Solution](#)

**331.** Respiratory organs of silkworm are

(a) Lungs

(b) Tracheae

(c) Malpighian tubules

(d) Skin

A. Lungs

B. Tracheae

C. Malpighian tubules

D. Skin.

**Answer: B**



**Watch Video Solution**

**332.** Food plant of *Antheraea assama* / Muga silkworm is

(a) *Terminalia arjuna*

(b) *Ricinus cummunis*

(c) *Euphorbia pulcherima*

(d) *Machilus bombycina*

A. *Terminalia arjuna*

B. *Ricinus cummunis*

C. *Euphorbia pulcherima*

D. *Machilus bombycina*.

**Answer: D**



**Watch Video Solution**

**333.** Green gland is excretory organ of

(a) Prawn

(b) Snail

(c) Butterfly

(d) Earthworm

A. Prawn

B. Snail

C. Butterfly

D. Earthworm.

**Answer: A**

 [Watch Video Solution](#)

**334.** Name the protozoan disease of Mulberry silkworm?

- (a) Flacheri
- (b) Grasserie
- (c) Pebrine
- (d) Muscardine

A. Flacheri

B. Grasseri

C. Pebrine

D. Muscardine.

**Answer: C**

 [Watch Video Solution](#)

**335.** Royal jelly is secreted from

- A. Hypopharyngeal gland
- B. Milk gland
- C. Salivary gland
- D. Intergumentary gland.

**Answer: A**



**Watch Video Solution**

**336.** Compound eyes occur in

- A. Echinodermate
- B. Mollusca
- C. Arthropoda



D. Annelida

**Answer: C**

 [Watch Video Solution](#)

**337.** From which stage of silk moth, the silk is obtained?

- A. Third instar
- B. Fourth instar
- C. Fifth instar
- D. Pupa.

**Answer: C**

 [Watch Video Solution](#)

**338.** Helically coiled X-organ occurs in

- (a) Crustacea
- (b) Insecta
- (c) Amphibia
- (d) Porifera

A. Crustacea

B. Insecta

C. Amphibia

D. Porifera.

**Answer: A**



**Watch Video Solution**

**339.** Statement (S). Arthropoda are the most successful of all known animal groups

Reason (R). Arthropoda exhibits the greatest adaptive radiations and have adapted to diverse habitats.

- A. Both S and R are true and R explains S.
- B. Both S and R are true but R cannot explain S.
- C. Only S is correct R is wrong.
- D. Both S and R are wrong.

**Answer: A**



**Watch Video Solution**

340. Match the columns :

**Set I**

- (a) Pollen basket
- (b) Pseudotracheae
- (c) Shellac
- (d) Dutton's membrane
- (e) Well developed galea

**Set II**

- (i) Butterfly
- (ii) *Laccifer lacca*
- (iii) Mosquito
- (iv) *Musca*
- (v) Worker Bee

- (A) a-iii, b-ii, c-iv, d-v, e-i
- (B) a-i, b-v, c-iii, d-iv, e-ii
- (C) a-iv, b-v, c-iii, d-ii, e-i
- (D) a-v, b-iv, c-ii, d-iii, e-i.

A. a-iii, b-ii, c-iv, d-v, e-i

B. a-i, b-v, c-iii, d-iv, e-ii

C. a-iv, b-v, c-iii, d-ii, e-i

D. a-v, b-iv, c-ii, d-iii, e-i.

**Answer: D**

 **Watch Video Solution**

**341.** Which one is correctly matched ?

(a) Scorpion, Spider, Cockroach - Ventral solid central nervous system

(b) Cockroach, Locust, Taenia - Metameric segmentation

(c) Liverfluke, Sea Anemone, sea Cucumber - Bilateral symmetry

(d) Centipede, prawn, Sea Urchin - Jointed appendages

A. Scorpion, Spider, Cockroach - Ventral solid central nervous system

B. Cockroach, Locust, Taenia - Metameric segmentation

C. Liverfluke, Sea Anemone, sea Cucumber - Bilateral symmetry

D. Centipede, prawn, Sea Urchin - Jointed appendages.

**Answer: A**



**Watch Video Solution**

**342.** Saprozoic feeding habit occurs in

A. Cockroach

B. Mosquito

C. Spider

D. Scorpion.

**Answer: C**



**Watch Video Solution**

**343.** Ecdysone is secreted in

A. Nematoda

B. Polychaeta

C. Trematoda

D. Insecta.

**Answer: D**

 [Watch Video Solution](#)

**344.** The eggs of silk moth are

- A. Centrolecithal
- B. Telolecithal
- C. Mesolecithal
- D. Alecithal.

**Answer: A**

 [Watch Video Solution](#)

**345.** Which of the following hormones regulates growth and metamorphosis in insects

- A. Brain hormone

- B. Juvenile hormone
- C. Prothoracicotrophic hormone
- D. Ecdysone.

**Answer: B**

 [Watch Video Solution](#)

**346.** The larva of *Bombyx mori* is known as

- A. Trochophore
- B. Nymph
- C. Cocoon
- D. Caterpillar.

**Answer: D**

 [Watch Video Solution](#)



**347.** *Aedes aegypti* is a vector for

- A. Yellow fever
- B. Dengue fever
- C. Both A and B
- D. Japanese encephalitis.

**Answer: C**



**Watch Video Solution**

**348.** During silk reeling, pupae inside cocoons are killed by

- A. Stiffing
- B. Asphyxiation
- C. Crushing

D. Pressing.

**Answer: B**

 [Watch Video Solution](#)

**349.** In royal jelly percentage of maltose and other sugar is

- A. 9.2 %
- B. 10.5 %
- C. 11.2 %
- D. 8.81 %

**Answer: C**

 [Watch Video Solution](#)

**350.** The scientific name of Asian tiger mosquito is

A. *Aedes taeniorhynchus*

B. *A. aegypti*

C. *A. albopictus*

D. *A. albolineatus*.

**Answer: C**



**Watch Video Solution**

**351.** Life span of Honey Bee drone is

A. 3-4 months

B. 1-2 months

C. 6-7 months

D. 10-12 months

**Answer: B**

 [Watch Video Solution](#)

**352.** Which stage of silkworm secretes silk?

(a) Adult

(b) Pupa

(c) Cocoon

(d) Larva

A. Adult

B. Pupa

C. Cocoon

D. Larva.

**Answer: D**

 [Watch Video Solution](#)

**353.** Real product of apiculture is

- A. Honey
- B. Honey and bee wax
- C. Bee wax
- D. None of the above.

**Answer: C**



**Watch Video Solution**

**354.** Polymorphism is shown by

- A. Physalia
- B. Termite
- C. Trypanosoma

D. All the above.

**Answer: D**

 [Watch Video Solution](#)

**355.** Bilateral symmetry, segmentation, coelom and open circulatory system characterises which of the following phyla?

A. Arthropoda

B. Mollusca

C. Echinodermata

D. Annelida.

**Answer: A**

 [Watch Video Solution](#)

**356.** Worker bees are

- A. Sterile females
- B. Fertile females
- C. Sterile drones
- D. Become fertile females in absence of queen.

**Answer: A**



**Watch Video Solution**

**357.** Which is economically useful insect?

- (a) Mantis religiosa
- (b) Termites
- (c) Taccardia lacca
- (d) Carausius

**A. Mantis religiosa**

B. Termites

C. Taccardia lacca

D. Carausius.

**Answer: C**



**Watch Video Solution**

**358.** Which of the following match is correct?

(a) Cockroach-crustacea

(b) Pila-Pelecypoda

(c) Spider-arachnida

(d) Unio-gastropoda

A. Cockroach-crustacea

B. Pila-Pelecypoda

C. Spider-arachnida



D. Unio-gastropoda.

**Answer: C**

 [Watch Video Solution](#)

**359.** Which one of the following diseases is caused by *Nosema bomycus* in Mulberry silkworm.

A. Muscadine

B. Pebrine

C. Flacherie

D. Grasserie

**Answer: B**

 [Watch Video Solution](#)

**360.** How do you differentiate a butterfly from a moth?

- A. Moth has feathery antennae but butterfly has club-shaped antennae
- B. Moth has one pair of wings but butterfly has two pairs of wings
- C. Moth is diurnal but butterfly is nocturnal
- D. Moth has simple eyes but butterfly has compound eyes.

**Answer: A**

 [Watch Video Solution](#)

**361.** The most commonly maintained species of bee by bee keepers is

- A. *Apis dorsata*
- B. *Apis mellifera*
- C. *Apis indica*

D. *Apis florea*

**Answer: B**

 [Watch Video Solution](#)

**362.** Which of the following are examples of Arthropoda?

- A. Silver fish, Star fish, Prawn
- B. Clam worm, Apple Snail, Honey bee
- C. Sea star, Tongue worm, Scorpion
- D. Cockroach, Scorpion, Prawn.

**Answer: D**

 [Watch Video Solution](#)

**363.** Percentage composition of fibroin and sericin in silk is

A. 30 : 90

B. 50 : 40

C. 40 : 60

D. 80 : 20

**Answer: D**



**Watch Video Solution**

**364.** Which of the following is used as organic farming as an bioinsecticide

A. Tiger beetle

B. Silkworm

C. Caterpillar

D. Gundhi poka.

**Answer: A**

 [Watch Video Solution](#)

**365.** Which animal of the following belongs to class crustacea

A. Mosquito

B. Cyclops/Prawn

C. Grass hopper

D. Cockroach.

**Answer: B**

 [Watch Video Solution](#)

**366.** pebrine is a disease of

- A. Honey bee
- B. Silk worm
- C. Lac insect
- D. Aphids.

**Answer: B**



**Watch Video Solution**

**367.** Bee-keeping is called

- A. Sericulture
- B. Pearl culture
- C. Pisciculture
- D. Apiculture.

**Answer: D**



**Watch Video Solution**

**368.** Japanese encephalitis is spread by

- A. Tsetse fly
- B. House fly
- C. Sandfly
- D. Mosquito

**Answer: D**



**Watch Video Solution**

**369.** Culex and Anopheles show similarity in that

- A. Females of both transmit diseases
- B. Larvae float in water
- C. Larvae lie horizontally, floating parallel to surface of water
- D. All the above.

**Answer: D**

 [Watch Video Solution](#)

**370.** *Bombyx mori* lays its eggs on the leaves of tree

- (a) *Ficus religiosa*
- (b) *Morus alba*
- (c) *Dalbergia sisso*
- (d) *Mangifera indica*

A. *Ficus religiosa*

B. *Morus alba*



C. Dalbergia sisso

D. Mangifera indica.

**Answer: B**



**Watch Video Solution**

**371.** Round dance of bee indicates

A. Courtship

B. Arrival of queen

C. Location of flowers

D. Location of predator.

**Answer: C**



**Watch Video Solution**

**372.** A female Anopheles mosquito can be recognized by

- (a) Proboscis and palpi are long and more or less of equal length
- (b) Proboscis long and palpi short
- (c) Proboscis short and palpi long
- (d) Both proboscis and palpi short

- A. Proboscis and palpi are long and more or less of equal length
- B. Proboscis long and palpi short
- C. Proboscis short and palpi long
- D. Both proboscis and palpi short.

**Answer: A**



**Watch Video Solution**

**373.** Open circulatory system occurs in

- A. Earthworm

B. Snail

C. Cockroach

D. Both B and C.

**Answer: D**



[Watch Video Solution](#)

**374.** Stiffing is related to

A. Sericulture

B. Lac culture

C. Fishery

D. Apiculture.

**Answer: A**



[Watch Video Solution](#)

**375.** Silk produced by *Antheraea mylitta* is also called

- A. Muga silk
- B. Tasar silk
- C. Mysore silk
- D. Eri silk.

**Answer: B**

 [Watch Video Solution](#)

**376.** The arthropod exoskeleton is formed of

- A. Several kinds of polysaccharides
- B. Several kinds of proteins
- C. Layers of proteins and chitin

D. Single complex protein called arthropodin.

**Answer: C**

 [Watch Video Solution](#)

**377.** Which one belongs to Arthropoda?

- (a) Cuttle Fish
- (b) Gold Fish
- (c) Star Fish
- (d) Silver Fish

A. Cuttle Fish

B. Gold Fish

C. Star Fish

D. Silver Fish.

**Answer: D**



[Watch Video Solution](#)

**378.** Which is not an insect?

- A. Spider
- B. Locust
- C. Mosquito
- D. Ant.

**Answer: A**



[Watch Video Solution](#)

**379.** Which one prefers to breed helps in clean water and its larvae lie parallel to surface of water?

- (a) Anopheles
- (b) Culex

(c) Aedes

(d) Phlebotomus

A. Anopheles

B. Culex

C. Aedes

D. Phlebotomus.

**Answer: C**



**Watch Video Solution**

**380.** Which one of the following is a correct match?

(a) Filariasis- Taenia solium

(b) Encephalitis - Culex

(c) Malaria - Phlebotomus

(d) Kala-azar- Anopheles

A. Filariasis- Taenia solium

B. Encephalitis - Culex

C. Malaria - Phle botomus

D. Kala-azar- Anopheles.

**Answer: B**



**Watch Video Solution**

**381.** Periplaneta belongs to phylum

A. Annelida

B. Mollusca

C. Echinodermata

D. Arthropoda.

**Answer: D**



 [Watch Video Solution](#)

**382.** An aquatic living fossil, with ancient origin and many primitive characters which respire through book lungs is

A. Limulus

B. Cancer

C. Lucifer

D. Daphnia.

**Answer: A**

 [Watch Video Solution](#)

**383.** The two more distantly related phyla are

A. Cnidarians and Platyhelminthes

B. Annelida and Arthropoda

C. Chordata and Echinodermata

D. Mollusca and Echinodermata.

**Answer: B**



[Watch Video Solution](#)

**384.** Pebrine disease of silkworm is caused by a sporozoan/protozoan which is

A. Nosema

B. Plasmodium

C. Dugesia

D. Monocystis.

**Answer: A**



 [Watch Video Solution](#)

**385.** What is common between earthworm and Periplaneta?

- A. Red coloured blood
- B. Segmented body
- C. Anal styles
- D. Malpighian tubules.

**Answer: B**

 [Watch Video Solution](#)

**386.** Which is not characteristic feature of arthropods

- A. Jointed appendages
- B. Moulting

C. Unsegmented body

D. Articulated exoskeleton.

**Answer: C**



**Watch Video Solution**

**387.** The stages between larval moults in an insect are called

A. Pupae

B. Grubs

C. Caterpillars

D. Instars.

**Answer: D**



**Watch Video Solution**

**388.** Hemimetabolus insect which is nocturnal and sanguivorous is

A. Cimex

B. Musca

C. Anopheles

D. Apis.

**Answer: A**



**Watch Video Solution**

**389.** Identify the correct combinations

(a) Housefly- labellum - Dutton's membrane

(b) Moth - labellum - Dutton's membrane

(c) Butterfly - first maxillae - galea

(d) Tsetse fly - rostrum - haustellum.

A. a and b

B. a and c

C. b and c

D. b and d.

**Answer: B**



**Watch Video Solution**

**390.** Select the option with correct exception

A. 

Organisms	Category	Exception
Cacti, Venus Fly Trap	Plants	Cacti

B.

Organisms	Category	Exception
Penicillium, Aspergillus, Mucor	Fungi	Mucor

C.

Organisms	Category	Exception
Ascaris, Nereis, Wuchereria	Aschelminthes	Nereis

D.

Organisms

Category

Exception

Scorpion, Prawn, Anopheles – Arthropoda – Prawn

**Answer: C**



[Watch Video Solution](#)

**391.** Plague is spread by

A. Pediculus

B. Cimex

C. Aedes

D. Xenopsylla

**Answer: D**



[Watch Video Solution](#)

**392.** In mosquitoes, the sex differentiation can be done on the basis of

- A. size of wings
- B. Antennae
- C. Antennae and maxillary palps
- D. Ocelli.

**Answer: C**

 [Watch Video Solution](#)

**393.** Which of the following best illustrates feedback in development ?

- A. As tissue 'X' develops, it secretes enzyme to inhibit development of tissue 'Y'



- B. As tissue 'X' develops, it secretes something that induces tissue 'Y' to develop
- C. As tissue 'X' develops, it secretes something that slows down growth of tissue 'Y'
- D. Tissue 'X' secretes RNA which changes the development of tissue 'Y'.

**Answer: A**

 [Watch Video Solution](#)

**394.** Which are correctly matched to their taxonomic classification

- A. Spiny Anteater, Sea Urchin, Sea Cucumber - Echinodermata
- B. Flying Fish, cuttle Fish, Silver Fish - Pisces
- C. Centipede, Millipede, spider, Scorpion- Insecta

D. Housefly, butterfly, Tsetse fly, Silver Fish- Insecta.

**Answer: D**

 [Watch Video Solution](#)

**395.** One of the representatives of Phylum Arthropoda is

A. Flying Fish

B. Cuttle Fish

C. Silver fish

D. Puffer Fish.

**Answer: C**

 [Watch Video Solution](#)

**396.** Which group of animals belong to the same phylum?

- A. Sponge, Sea Anemone, Star Fish
- B. Malarial parasite, Amoeba, Mosquito
- C. Earthworm, Pinworm, Tapeworm
- D. Prawn, Scorpion, Locusta.

**Answer: D**



**Watch Video Solution**

**397.** Which is correctly matched

- A. Centipede, Prawn, Sea Urchin - Jointed appendages
- B. Cockroach, Locust, Taenia - Metameric segmentation
- C. Scorpion, Spider, Cockroach - Ventral solid nerve cord
- D. Liver fluke, Sea Anemone, Sea Cucumber - Bilateral symmetry.

Answer: C



Watch Video Solution

398. Match the columns and find the correct option

- |                 |                   |
|-----------------|-------------------|
| (a) Choanocytes | (i) Arthropoda    |
| (b) Cnidoblasts | (ii) Ctenophora   |
| (c) Green gland | (iii) Porifera    |
| (d) Nephridia   | (iv) Coelenterata |
| (e) Comb plates | (v) Annelida      |
- (A) (a)–(ii), (b)–(i), (c)–(iv), (d)–(v), (e)–(iii)  
(B) (a)–(ii), (b)–(iv), (c)–(i), (d)–(v), (e)–(iii)  
(C) (a)–(v), (b)–(i), (c)–(iii), (d)–(ii), (e)–(iv)  
(D) (a)–(iii), (b)–(iv), (c)–(i), (d)–(v), (e)–(ii).



Watch Video Solution

399. The moulting hormone ecdysone belongs to the category of

A. Amines

B. Long chain peptides

C. Steroids

D. Fatty acids.

**Answer: C**

 [Watch Video Solution](#)

**400.** Choose the correct set of disease transmitting arthropods

A. Tsetse fly, house fly, rat flea, sand fly

B. Anopheles, louse, house fly, termite

C. Cockroach, louse, termite, house fly

D. Rat flea, butterfly, house fly, tse-tse fly.

**Answer: A**

 [Watch Video Solution](#)

**401.** The chitinous exoskeleton of arthropoda is formed by polymerisation of

- A. Keratin sulphate and chondroitin sulphate
- B. D-glucosamine
- C. N-acetyl glucosamine
- D. Lipoglycans.

**Answer: C**

 [Watch Video Solution](#)

**402.** Which one forms a connecting link between annelida and arthropoda

- A. Peripatus

B. Chaetopterus

C. Limulus

D. Bonellia.

**Answer: A**

 [Watch Video Solution](#)

**403.** In insects, the effect of juvenile hormone is to

A. Potentiate effect of ecdysone

B. Oppose the effect of ecdysone

C. Effect maturation

D. Prevent maturation.

**Answer: D**

 [Watch Video Solution](#)

**404.** Which is a matching set of taxonomy

- A. Leech, Locust, Sea Anemone, Lobster
- B. Star Fish, Jelly fish, Cuttle fish, Octopus
- C. Millipede, Carb, Centipede, cockroach
- D. Nereis, Planaria, Roundworm, Earthworm.

**Answer: C**

 [Watch Video Solution](#)

**405.** *Aedes aegypti* is a vector for

- A. Yellow fever
- B. Dengue fever
- C. Japanese encephalitis



D. Both A and B.

**Answer: D**

 [Watch Video Solution](#)

**406.** Apposition image is formed in the eye of insect

A. Aedes

B. Culex

C. Musca

D. Periplaneta.

**Answer: C**

 [Watch Video Solution](#)

**407.** Match the columns and choose the correct option

I	II	III
(1) Cnidocytes	(a) <i>Ctenoplana</i>	(i) Balancing
(2) Statocyst	(b) <i>Fasciola</i>	(ii) Defense
(3) Radula	(c) <i>Pennatulula</i>	(iii) Feeding
(4) Flame cells	(d) <i>Locusta</i>	(iv) Locomotion
(5) Comb plates	(e) <i>Pila</i>	(v) Osmoregulation

A. 1-a-ii, 2-b-v, 3-e-iii, 4-c-l, 5-d-iv

B. 1-b-iii, 2-a-iv, 3-e-v, 4-c-ii, 4-c-ii, 5-d-i

C. 1-c-ii, 2-d-l, 3-e-iii, 4-b-v, 5-a-iv

D. 1-d-l, 2-c-ii, 3-a-iv, 4-b-iii, 5-e-v

**Answer: C**



**Watch Video Solution**

**408.** Which of the following features is not present in the phylum

Arthropoda

- A. Jointed appendages
- B. Chitinous exoskeleton
- C. Metameric segmentaton
- D. Parapodia

**Answer: D**

 [Watch Video Solution](#)

**409.** Harmful insect for leaves and stems of sugarcane is

- A. Pyrilla
- B. Agrostis
- C. Leptocorisa
- D. Idiocercus.

**Answer: A**

 [Watch Video Solution](#)

**410.** Similarity between Housefly and Mosquito is that both have

- A. Two pairs of fully developed wings
- B. Sponging mouth parts
- C. Long antennae
- D. Larval forms.

**Answer: D**

 [Watch Video Solution](#)

**411.** Identify the incorrect statements : (i) Members of gastropoda exhibit torsion (ii) Aristotle's lantern is present in heart urchins (iii) Anthozoans are polypoid forms (iv) Diplopoda includes centipedes

A. ii, iii

B. iii, iv

C. ii, iv

D. i, ii

**Answer: C**

 [Watch Video Solution](#)

**Cyg**

1. Tail wagging dance of bees is meant for indicating a location situated at a distance of

A. 10 m

B. 50 m

C. Less than 75 m

D. More than 75 m.

**Answer:**

 [Watch Video Solution](#)

2. The different categories in Black Ant are

A. Queens, kings, workers and soldiers

B. Queens, kings and workers

C. Queen and workers

D. Queens, kings and soldiers.

**Answer:**

 [Watch Video Solution](#)

3. Termitarium is the nest of

- A. Bees
- B. Wasps
- C. White Ants
- D. Black Ants.

**Answer:**



**Watch Video Solution**

4. Fire Fly is a

- A. Nocturnal Fly
- B. Nocturnal Beetle
- C. Scale Insect
- D. Moth.

**Answer:**

 [Watch Video Solution](#)

5. Organ sensitive to vibrations is called

- A. Tangoreceptor
- B. Proprioceptor.
- C. Auditory receptor
- D. Thigmoreceptor.

**Answer:**

 [Watch Video Solution](#)

6. Cells producing moulting hormones are



A. Trophocytes

B. Hoemocytes

C. Oenocytes

D. Mycetocytes.

**Answer:**



**Watch Video Solution**

7. The insect that spreads germs of plague from rats to humans is

A. Penticulus

B. Xenopsylla

C. Cimex

D. Gnat.

**Answer:**

 [Watch Video Solution](#)

8. Trilobites are

- A. Extinct arthropods
- B. Microscopic crustaceans
- C. Coloured crustaceans of tidal areas
- D. Nocturnal bottom feeders of Central and south India.

**Answer:**

 [Watch Video Solution](#)

9. Millipede possesses

- A. Stink glands
- B. Scent glands

C. Silk glands

D. Poison glands.

**Answer:**



**Watch Video Solution**

**10.** A viviparous arthropod is

A. Centipede

B. Scorpion

C. Millipede

D. Hermit Crab.

**Answer:**



**Watch Video Solution**

11. Crustacean with a single eye is

- A. Centipede
- B. Cyclops
- C. Daphnia
- D. Both B and C.

**Answer:**



[Watch Video Solution](#)

12. The loudest insect is

- A. Cricket
- B. Grasshopper
- C. Cicada
- D. Tinea.

**Answer:**

 [Watch Video Solution](#)

**13.** What is true about gonapophyses of Cockroach ?

- A. Three in each sex
- B. Six in each sex
- C. Three in female and six in male
- D. Six in female and three in male.

**Answer:**

 [Watch Video Solution](#)

**14.** Number of alary muscles in Cockroach is

A. 12

B. 13

C. 9

D. 7

**Answer:**



**Watch Video Solution**

**15. Tumbler is**

A. Naiad of Dragon Fly

B. Pupa of Mosquito

C. Caterpillar of Mosquito

D. Nymph of Locust.

**Answer:**

 [Watch Video Solution](#)

**16.** The visual pigment present in insect ommatidium (rhabdomeres) is

- A. Retinene
- B. Rhodosin
- C. Iodopsin
- D. None of the above.

**Answer:**

 [Watch Video Solution](#)

**17.** Ant Cows are

- A. Trichonympha

B. Aphids

C. Silver fish

D. Ticks.

**Answer:**



[Watch Video Solution](#)

**18. Lac Insect feeds on**

A. Ants

B. Mosquitoes

C. Leaves

D. Plant juice.

**Answer:**



[Watch Video Solution](#)



19. Antennae of Moth are

- A. Long and plumose
- B. Long and feathery
- C. Short and feathery
- D. Short and plumose.

**Answer:**

 [Watch Video Solution](#)

20. Lady Bird Beetle is a useful insect because it feeds on

- A. Aphids and scale insects
- B. Moths
- C. Ticks

D. Termites.

**Answer:**



**Watch Video Solution**