



BIOLOGY

BOOKS - DINESH PUBLICATION ENGLISH

PLATYHELMINTHES-THE FLAT WORMS

Multiple Choice Questions

1. An important character not present in platyhelminthes is

- A. monoecious
- B. Vitelline glands
- C. Flat animals
- D. Flame cells

Answer: d



2. Flat worms are

- A. Diploblastic
- B. Triploblastic
- C. Monoblastic
- D. None of the above

Answer: b

 Watch Video Solution

3. Coelom in flat worms is

- A. Well developed
- B. Poorly developed
- C. Schizocoel

D. Absent .

Answer: d



Watch Video Solution

4. Animals with self fertilization is

A. paragonimus

B. Dugesia

C. Taenia solium

D. None of the above

Answer: c



Watch Video Solution

5. Which of the following is a free living flat worm

- A. Planaria
- B. schisosoma
- C. Fasciola
- D. Taenia

Answer: a

 [Watch Video Solution](#)

6. Vital system absent in Tapeworm is

- A. Nervous system
- B. Digestive system
- C. Excretory system
- D. Reproductive system .

Answer: b

 [Watch Video Solution](#)

7. in which animal ,pharyex can be everted ?

A. Dugesia

B. Fasciola

C. Taenia

D. Ascaris

Answer: a



[Watch Video Solution](#)

8. Respiration in Dugesia is

A. Aerobic

B. Anaerobic

C. Both

D. None of the above

Answer: a

 [Watch Video Solution](#)

9. In platyhelminthes

A. Nerve cords are present

B. Nerve cords are absent

C. Nerve nets are present

D. Nerve nets are absent

Answer: a

 [Watch Video Solution](#)

10. Segments of Tapeworm are called

- A. Scolex
- B. Cysticercus
- C. Proglotids
- D. Onchospheres

Answer: c

 [Watch Video Solution](#)

11. The tissue In platyheminthes between viscera and body wall is called

- A. Coelom
- B. Paraenchyma
- C. Mesoderm
- D. Choanderm.

Answer: b

 [Watch Video Solution](#)

12. Tapeworm respire

- A. Through suckers
- B. Through mouth
- C. Through lateral pores or Sterigmata
- D. Anaerobically

Answer: d



Watch Video Solution

13. Animals belonging to plathelminthes are also called . Flat worms because

- A. their head is flat
- B. they have dorsoventrally compressed body
- C. they creep over surface

D. the alimentary canal is flattened .

Answer: b



Watch Video Solution

14. Scolex occurs in

A. Hydra

B. Asaris

C. Taenia

D. liver Fluke

Answer: c



Watch Video Solution

15. Incomplete alimentary cannal occurs in

- A. Fasciola
- B. Ascaris
- C. Wuchereria
- D. Rhabditis

Answer: a

 [Watch Video Solution](#)

16. Which is free swimming stage in the life history of Fasciola?

- A. Miracidium
- B. Sporocyst
- C. Redia
- D. None of the above

Answer: a

 [Watch Video Solution](#)

17. Proglottids of tapeworm proliferate from

- A. Scolex
- B. Other proglottids
- C. Neck
- D. Anywhere from the body

Answer: c



Watch Video Solution

18. Parasitic adaptation of flatworms is

- A. Anaerobic respiration
- B. Secretion of antienzymes
- C. Resistant covering cuticle or integument

D. All of the above

Answer: d



[Watch Video Solution](#)

19. The disease caused by Fasciola is

A. Liver rot

B. Cysticercosis

C. Taeniasis

D. None of the above

Answer: a



[Watch Video Solution](#)

20. Taenia saginata differs from taenia solium as it lacks

- A. Rostellum
- B. Suckers
- C. Scolex
- D. None of the above

Answer: a

 [Watch Video Solution](#)

21. Apoptosis is

- A. Removal of mature proglottides
- B. Removal of immature proglottides
- C. Removal of gravid segments
- D. None of the above

Answer: c

 [Watch Video Solution](#)

22. Regeneration is best shown by flat worm

- A. Fasciola
- B. Planaria dugesia
- C. Schistosoma
- D. Echinococcus

Answer: b



Watch Video Solution

23. Which one is blood fluke ?

- A. Schistosoma
- B. Echinococcus
- C. Fasciola

D. Taenia

Answer: a



Watch Video Solution

24. Dog tapeworm is

A. *Schistosoma haematobium*

B. *Opistorchios sinensis*

C. *Taenia nana*

D. *Echinococcus granulosus*

Answer: d



Watch Video Solution

25. The secondary host of taenia saginata is

A. Cow

B. Sheep

C. Pig

D. Both A and B

Answer: d



[Watch Video Solution](#)

26. The secondary host of tenia solium is

A. Buffalo

B. Sheep

C. Pig

D. Goat

Answer: c



[Watch Video Solution](#)

27. In Schistosoma

- A. male is longer than female
- B. male is broader than female
- C. male has gynaecophoric canal for holding female
- D. Both B and C

Answer: d



Watch Video Solution

28. The number of proglottides in Taenia solium is about

- A. 500
- B. 900
- C. 300

D. 200

Answer: b



[Watch Video Solution](#)

29. Four suckers present on the scolex of tapeworm are meant for

A. Attachment

B. sucking food

C. Crushing food

D. all of the above

Answer: a



[Watch Video Solution](#)

30. A cestode with only 3 segments is

- A. *Taenia solium*
- B. *Diphyllobothrium lattum*
- C. *Echinococcus*
- D. *Hymenolipis nana.*

Answer: c

 [Watch Video Solution](#)

31. *Fasciola hepatica* is a

- A. Endoparasite
- B. Free living
- C. Ectoparasite
- D. Both B and C

Answer: ab

 [Watch Video Solution](#)

32. Cysticercus stage of taenia soilum is found in

- A. Man
- B. Pig
- C. Goat
- D. Sheep

Answer: a



[Watch Video Solution](#)

33. Liver Fluke belongs to class

- A. Trematoda
- B. Turbellaria
- C. Cestoda

D. Nematoda

Answer: c



Watch Video Solution

34. The body of tapeworm consists of

- A. Scolex and neck
- B. Scolex and proglottids
- C. Scolex , neck and proglottids
- D. Neck and strobila

Answer: a



Watch Video Solution

35. Tape worm hepatica occurs in

A. Bile duct of sheep

B. Liver of sheep

C. Liver of man

D. Human bile ducts .

Answer: a

 [Watch Video Solution](#)

36. Tape worm is

A. Anoxybiotic

B. Oxybiotic

C. Aerobic

D. None of the above

Answer: a

 [Watch Video Solution](#)

37. Each segment of taenia is

- A. monoecius
- B. Dioecius
- C. Asexual
- D. None of the above

Answer: d



[Watch Video Solution](#)

38. Hydatid worm is

- A. Achhissoma indicum
- B. Ancylostoma duodenale
- C. Ecteroebius vermicularis

D. Echinococcus granulosus

Answer: db



Watch Video Solution

39. The infective stage of Fasciola hepatica is

A. Sporocyst

B. Redia

C. Cercaria

D. Metacercaria

Answer: a



Watch Video Solution

40. Which one of the flatworms has eyes ?

A. Fasciola

B. Dugesia

C. Schistosoma

D. Echinococcus

Answer: a

 [Watch Video Solution](#)

41. Hexacanth is activated by

A. Bile salts

B. Pancreatic juice

C. Intestinal juice

D. None

Answer: a

 [Watch Video Solution](#)

42. Hexacanth reaches

- A. Voluntary muscles
- B. Involuntary muscles
- C. Cardiac muscles
- D. none of the above

Answer: ad



Watch Video Solution

43. the disease caused by taenia is

- A. Taeniasis
- B. liver rot
- C. Ascariasis

D. None

Answer: a



[Watch Video Solution](#)

44. Fasciola attaches its self to walls of the bile ducts by means of

- A. Anterior sucker
- B. Adhesive zone
- C. Posterior sucker /acetabulum
- D. Spiny cuticle and posterior sucker

Answer: a



[Watch Video Solution](#)

45. Human infection of taenia solium through food contaminated with

A. Cystecerci

B. Onchospheres

C. Hexacanth

D. Adult worm

Answer: d



Watch Video Solution

46. Pig gets infection of taenia solium contains

A. Onchospheres

B. cysticerci

C. Hexacanth

D. Adult worm

Answer: b



Watch Video Solution

47. Scolex of taenia solium consists of

- A. Rostellum
- B. Hooks
- C. Suckers
- D. All of the above

Answer: a



[Watch Video Solution](#)

48. Taenia solium attaches itself to the intestinal wall by means of scolex through its

- A. Suckers
- B. Suckers and hooks
- C. Hooks

D. Adhesive glands

Answer: d



Watch Video Solution

49. Fluke occurring in human beings is

A. Fasciolopsis

B. Fasciola

C. Dugesia

D. Echinococcus .

Answer: b



Watch Video Solution

50. in case of human beings hydatid cysts occur over

A. Stomach

B. liver

C. Lungs

D. Both B and C

Answer: c



[Watch Video Solution](#)

51. Primary host of echinococcus granulosus is

A. Sheep or Goat

B. Dog

C. Human beings

D. pig

Answer: b



[Watch Video Solution](#)

52. In Human being ,hydatid worm is

- A. Secondary parasite
- B. Periodic parasite
- C. Incidental parasite
- D. Ectoparasite

Answer: ca



Watch Video Solution

53. Number of proglottides present in Echinococcus granulosus is

- A. 3 – 4
- B. 10 – 15
- C. 25 – 30

D. 250 – 300

Answer: b



Watch Video Solution

54. Beef tapeworm is

A. *Taenia solium*

B. *Taenia saginata*

C. *Hymenolepis nana*

D. *Dipylidium caninum*

Answer: b



Watch Video Solution

55. Beef tapeworm attaches itself to the wall of intestine by means of

A. Hooks

B. Hookless rostellum

C. Suckers

D. Minute spines

Answer: c



Watch Video Solution

56. Onchosphere infection of taenia solium may occur in human being it

Causes

A. Cysticercosis

B. Taeniasis

C. liver rot

D. hydatid disease

Answer: a

 [Watch Video Solution](#)

57. Pigs pick up tapeworm infection because they are

- A. Coprozoic
- B. Coprophagic
- C. Capsules
- D. Both B and C

Answer: bd

 [Watch Video Solution](#)

58. Encapsulated embryo present over the scolex of tapeworm is called

- A. cysticaria
- B. Bladderworm
- C. Cysticercus

D. Both B and C

Answer: c



Watch Video Solution

59. The larva or embryo which develop from onchosphere of Tapeworm is called

A. Cysticercus

B. Radia

C. Hexacanth

D. Matacercaria

Answer: d



Watch Video Solution

60. Inside pig , hexacanth larva gives rise to

- A. onchospheres
- B. Bladderworm
- C. Cysticercus
- D. Both B and C

Answer: a



[Watch Video Solution](#)

61. Protrusible structure present over the scolex of tapeworm is

- A. Rostellum
- B. Sucker
- C. Proglottids
- D. Auricle

Answer: c



Watch Video Solution

62. Structure present over the middle of the scolex of tapeworm is

A. Rosellum

B. Sucker

C. Proglottis

D. Auricle

Answer: c



Watch Video Solution

63. Number and arrangement of hooks present over rostellum of tapeworm are

A. 12 – 22 in one whorl

B. 22 – 32 in two whorls

C. 22 – 32 in one whorl

D. 12 – 22 in two whorls

Answer: b



Watch Video Solution

64. Number of gravid proglottides expelled out at one time is

A. 4 – 5

B. 5 – 10

C. 10 – 20

D. 20 – 40

Answer: a



Watch Video Solution

65. Infection in which capsules pass out of the body through faeces and urine is

- A. Cysticercosis
- B. Schistosomiasis
- C. Taeniasis
- D. Both B and C

Answer: b



[Watch Video Solution](#)

66. Schistosoma lives in human body in

- A. Lymph nodes
- B. urinary tract blood vessels
- C. Mesenteric and hepatic portal veins

D. All of the above

Answer: d



[Watch Video Solution](#)

67. the alternate host of schistosome is

A. Snail

B. pig

C. Sheep and goat

D. fish

Answer: a



[Watch Video Solution](#)

68. the stage absent in life cycle of schistosoma is

A. Miracidium

B. Redia

C. Capsule

D. Cercaria

Answer: b



Watch Video Solution

69. Human infection of blood Fluke occurs through

A. Metacercaria

B. Miracidium

C. capsule

D. Cercariae

Answer: d



Watch Video Solution

70. cercaria of blood Fluke pass into human body through

- A. Ingestion of food
- B. Drinking of contaminated water
- C. Direct penetration through skin
- D. Both B and C.

Answer: d



Watch Video Solution

71. what is true about male blood Fluke ?

- A. Shorter and slender
- B. Longer and slender
- C. Longer and broader

D. Shorter and broader

Answer: d



[Watch Video Solution](#)

72. In Schistosoma

A. male for holding female

B. male for holding eggs

C. female for holding male .

D. Female for holding male

Answer: a



[Watch Video Solution](#)

73. Which of the following is not a modification of plant organ for arid region?

- A. Echinococcus
- B. Schistosoma
- C. Opisthorchis
- D. Fasciola

Answer: b



[Watch Video Solution](#)

74. Intestinal Fluke is

- A. Fasciola indica
- B. Fasciolopsis buski
- C. Opisthorchis sinensis
- D. Schistosma japonicum.

Answer: b



Watch Video Solution

75. chinese or oriental Liver Fluke is

- A. *Opisthorchis sinensis*
- B. *Schistosoma japonicum*
- C. *Fasciola gigantica*
- D. both B and C.

Answer: a



Watch Video Solution

76. liver Fluke of Cattle is

- A. *Fasciola hepatica*

B. Fasciola gigantica

C. Schistosoma indium

D. Schistosoma mansoni

Answer: b



Watch Video Solution

77. Lung Fluke is

A. Paragonimus westermani

B. Schistosoma mansoni

C. Fasciola indica

D. Fasciola buski

Answer: a



Watch Video Solution

78. Fasciolasis is

- A. Liver rot of sheep
- B. Cirrhosis of humans
- C. Liver rot of cattle
- D. Cirrhosis of pig

Answer: a



Watch Video Solution

79. Fasciola hepatica is a

- A. Ectoparasite
- B. Monogenetic endoparasite
- C. Digenetic endoparasite
- D. Incidental parasite

Answer: c



Watch Video Solution

80. primary host of taenia solium is

A. Humans

B. Pig

C. Sheep

D. Snail

Answer: a



Watch Video Solution

81. primary host of taenia solium is

A. Snail

B. pig

C. Cattle

D. Human

Answer: d



Watch Video Solution

82. Liver Fluke resides inside

A. Liver

B. Bile ducts

C. Both A and B

D. Liver and duodenum.

Answer: c



Watch Video Solution

83. Liver Fluke has

- A. Absorptive nutrition
- B. saprozoic nutrition
- C. Holozic nutrition
- D. All the above

Answer: c



Watch Video Solution

84. Liver Fluke living in bile ducts feeds on

- A. Bile
- B. Blood and lymph
- C. Epithelial cells
- D. All the above

Answer: d



Watch Video Solution

85. Schistosoma is

- A. hermaphrodite but protandrous
- B. Hermaphrodute but protogynous
- C. Unisexual
- D. Hermaphordite with self fertilization

Answer: c



Watch Video Solution

86. Fasciola hepatica is

- A. Hermaphrodite with self fertilization

B. Hermaphrodite with preferably cross fertilization

C. unisexual

D. sexually sterile

Answer: b



[Watch Video Solution](#)

87. In fasciola hepatica , germination of capsule produces

A. Miracidium

B. Sporocyst

C. Redia

D. Cercaria

Answer: a



[Watch Video Solution](#)

88. Miracidium of Liver Fluke is

- A. Herbivorous
- B. Carnivorous
- C. Omnivoous
- D. Non feeding

Answer: d



Watch Video Solution

89. Miracidium of Liver Fluke is

- A. Free swiming
- B. Creeping
- C. Non motile
- D. Free floating

Answer: a



Watch Video Solution

90. Miracidium gives rise to

- A. sporocyst after entering snail
- B. sporocyst in contact with aquatic vegetation
- C. Redia after entering snail
- D. Redia in contact with aquatic vegetation .

Answer: a



Watch Video Solution

91. Sheep pick up infection of liver fluke from

- A. Redia

B. Cercaria

C. Metacercaria

D. Capsule

Answer: c



[Watch Video Solution](#)

92. Metacercaria of Liver Fluke is

A. Free swimming stage

B. Encysted stage

C. Nonencysted non motile stage

D. Free floating stage

Answer: b



[Watch Video Solution](#)

93. Regeneration is absent in flatworm

- A. Planaria
- B. Fasciola
- C. Schistosoma
- D. Both B and C

Answer: d



Watch Video Solution

94. Pseudoemetamerism occurs in

- A. Turbellaria
- B. Trematoda
- C. Cestoda
- D. None of the above

Answer: c



Watch Video Solution

95. mouth of dugesia is

- A. Anterior
- B. Antero - dorsal
- C. Mid- ventral
- D. Antero -ventral

Answer: c



Watch Video Solution

96. Fertilization is internal in

- A. Dugesia

B. Fasciola

C. Schistosoma

D. All the above

Answer: d



[Watch Video Solution](#)

97. Dugesia shows

A. Transverse binary fission

B. longitudinal binary fission

C. Oblique binary fission

D. no binary fission

Answer: a



[Watch Video Solution](#)

98. Afferent zone of *Dugesia* is

- A. Anterior
- B. Posterior
- C. Dorsal
- D. Ventral

Answer: d



Watch Video Solution

99. Solenocytes/ flame cells are excretory structures of

- A. Coelenterates
- B. Platyhelminthes
- C. Annelida
- D. Echinodermata

Answer: b



[Watch Video Solution](#)

100. Regeneration power can best be studied in

A. Planaria /Dugesia

B. Amphioxus

C. Earthworm

D. Sponge .

Answer: a



[Watch Video Solution](#)

101. The excretory structures of flat worms/Taenia are

A. Flame cells

B. Nephridia

C. malpighian tubules

D. Green glands

Answer: a



Watch Video Solution

102. *Taenia saginata* differs from *taenia solium* as it lacks

A. Absence of scolex hooks

B. Absence of scolex hooks and uterine branching

C. Absence of scolex hooks and presence of both male and female reproductive organs

D. Presence of scolex hooks

Answer: b



Watch Video Solution

103. Schistosoma is a parasite found in

- A. Blood
- B. Liver
- C. Lungs
- D. interstine

Answer: a



Watch Video Solution

104. Onchosphere occurs in

- A. Ascaris
- B. Fasciola
- C. Taenia

D. Planaria

Answer: c



Watch Video Solution

105. Bladderworm (cysticercus) is the larva of

A. Tapeworm

B. Roundworm

C. pinworm

D. liver Fluke

Answer: a



Watch Video Solution

106. Larva of schistosome is

A. Cercaria

B. Planula

C. cysticercus

D. Muller's larve

Answer: a



Watch Video Solution

107. What is correct about Taenia?

A. male organs occur in posterior proglottids

B. male organs occur in anterior proglottides

C. Female organs occur in anterior proglottides

D. mature proglottides contain both male and female organs

Answer: d



Watch Video Solution

108. Flame cells are associated with

- A. Respiration
- B. Excretion
- C. Nutrition
- D. Digestion

Answer: b



Watch Video Solution

109. What is true about *Taenia saginata*?

- A. Life history has pig as intermediate host
- B. there are two large suckers on scolex
- C. Rostellar hooks are absent

D. Rostellum has double circle of hooks

Answer: c



[Watch Video Solution](#)

110. Tapeworm does not possess digestive system as it

- A. does not require solid food
- B. Obtains food through general surface
- C. does not require food
- D. Lives in intestine

Answer: b



[Watch Video Solution](#)

111. which one is not larval stage of flatworms ?

- A. Redia
- B. Cercaria
- C. Bipinaria
- D. Miracidium

Answer: c

 [Watch Video Solution](#)

112. Which constitutes the correct pairing

- A. Flatworms -planaria
- B. Dogfish -Sea Urchin
- C. Fish - Snail
- D. None of the above

Answer: a

 [Watch Video Solution](#)

113. Anus is absent in

- A. Fasciola
- B. pheretima
- C. periplaneta
- D. unio

Answer: b



Watch Video Solution

114. Pick up the correctly matched

- A. water vascular system - sponge
- B. Blubber - kargaaro
- C. Marsupium - platyuro

D. flame cell -flatworm

Answer: d



Watch Video Solution

115. Which one belongs to Platyhelminthes?

A. Schistosoma

B. Trypanosoma

C. Plasmodium

D. Wuchereria

Answer: a



Watch Video Solution

116. Cysticerci in pig muscles can remain viable upto

- A. one year
- B. six months
- C. six years
- D. one month.

Answer: b

 [Watch Video Solution](#)

117. Taenia solium is characterised by

- A. Absence of digestive tract
- B. presence of hooks for adhesion
- C. Externally divided body
- D. all the above

Answer: d

 [Watch Video Solution](#)

118. Both alternation of generation and alternation of hosts are present in

A. Wuchereria

B. Fasciola

C. Taenia

D. Ascaris

Answer: b



Watch Video Solution

119. Give the correct match in the following

Column I

Column II

A Flame cells

p. Sponges

B Collar Cells

q. Hydra

C Stinging Cells

r. Planaria

D Pseudocoelom

s. Ascaris

A. $a = r, b = p, c = q, d = s$

B. $a = r, b = p, c = s, d = q$

C. $a = r, b = s, c = p, d = p$

D. $a = r, b = q, c = s, d = s$

Answer: a



Watch Video Solution

120. Laurer's canal is found in

A. Amoeba

B. Paramecium

C. Fasciola

D. Hydra.

Answer: c



Watch Video Solution

121. Which is true of taenia ?

- A. Anterior proglottides contain male organs while ripe proglottids have uterus filled with eggs
- B. all proglottides have both male and female organs
- C. female organs are confined to anterior proglottides .
- D. Male organs are confined to posterior proglottides.

Answer: a



Watch Video Solution

122. Alimentary canal is absent in

- A. Taenia and schistosoma
- B. Ascaris and fasciola

C. Taenia and Echinococcus

D. tricuris and Fasciola

Answer: c



Watch Video Solution

123. Rhabdites occur in

A. Planaria /Dugesia

B. fasciola

C. Taenia

D. Echinococcus

Answer: a



Watch Video Solution

124. In life history of liver fluke are present (1) Cercaria (2) Metacercaria (3) Sporocyst (4) Redia (5) Miracidium. What is their proper sequence

A. 21354

B. 53412

C. 54213

D. 54312

Answer: b



Watch Video Solution

125. Fasciola hepatica lives in

A. liver of sheep

B. Blood of sheep

C. Interstine of sheep

D. Spleen of sheep

Answer: a



Watch Video Solution

126. Dropping of gravid proglottids by cestodes is called

- A. Autophagy
- B. Autotomy
- C. Paedogenesis
- D. Apolysis

Answer: d



Watch Video Solution

127. Turbellarians are

- A. free living nematodes

B. parastic nematodes

C. free living flatworms

D. parastic trematodes

Answer: c



Watch Video Solution

128. Cercaria stage of *Fasciola hepatica* leads to

A. sporocyst

B. Redia

C. miracidium

D. metacercaria

Answer: d



Watch Video Solution

129. Free swimming ciliated larva of liver fluke is

- A. Redia
- B. Miracidium
- C. Metacercaria
- D. Cercaria

Answer: b



[Watch Video Solution](#)

130. Acoelmate animal with protansrous nature is

- A. Ascaris
- B. Schistosoma
- C. Taenia
- D. Megascolex

Answer: c



Watch Video Solution

131. A metazoan covered by cilia is

A. paramecium

B. Dugesia

C. fasciola

D. Ascaris

Answer: b



Watch Video Solution

132. For completing its life cycle , Tape worm requires /Intermediate host of Tapeworm is

A. Snail

B. pig

C. Dog

D. Man only

Answer: b



[Watch Video Solution](#)

133. Cysticercus of Taenia develop in

A. Man

B. Goat

C. Sheep

D. pig

Answer: d



[Watch Video Solution](#)

134. Hymenolepis nana is

- A. dog tapeworm
- B. Dwarf tapeworm
- C. Pork tapeworm
- D. Dead man's finger

Answer: b



Watch Video Solution

135. Lung Fluke is

- A. hymenolepic nana
- B. Paragnimus westermani
- C. Schistodoma haematobium

D. Echinococcus graanulosus

Answer: b



Watch Video Solution

136. which of the following takes foods but has no alimentary canal ?

A. Leech

B. Liver Fluke

C. Ascaris

D. Taenia

Answer: d



Watch Video Solution

137. Mehli's glands of Tapeworm are associated with

A. Reproduction

B. Excretion

C. Respiration

D. Circulation

Answer: a



Watch Video Solution

138. During its life cycle, *Fasciola hepatica* (Liver Fluke) infects its intermediate host and primary host as the following larval stages respectively

A. Radia and miracidium

B. Cercaria and redia

C. Metacercaria and cercaria

D. Miracidium and metacercaria

Answer: d



[Watch Video Solution](#)

139. Which one is excretory organ ?

A. Archaeocyte

B. Choanocyte

C. Pinacocyte

D. Solenocyte

Answer: d



[Watch Video Solution](#)

140. An acoelomate animal with bilateral symmetry is :

A. jelly fish

B. Liver Fluke

C. Crab

D. Roundworm.

Answer: b



Watch Video Solution

141. *Taenia solium* belongs to phylum

A. Aschelminthes

B. Mollusca

C. Platyhelminthes

D. Annelida

Answer: c



Watch Video Solution

142. *Taenia solium* is attached to intestinal mucosa by

- A. Rostellum
- B. Scolex
- C. Proglottides
- D. Acetabulum.

Answer: a



[Watch Video Solution](#)

143. Triploblastic , unsegmented , acoelomate exhibit bilateral symmetry reproducing both asexually and sexually , with some Parasitic forms . This description is characteristic of the phylum

- A. porifera
- B. platyhelminthes
- C. cnidaria

D. ctenophore

Answer: b



Watch Video Solution

144. flame cells are excretory organs of

A. Hydra

B. Hydrilla

C. Cockroach

D. planaria

Answer: d



Watch Video Solution

145. Cestoda are distinguished from other flatworms by the absence by

- A. Nervous system
- B. Digestive system
- C. Excretory system
- D. Reproductive system .

Answer: b

 [Watch Video Solution](#)

146. gut paraasite belongs to

- A. Gestoda
- B. Cestoda
- C. Turbellaria
- D. Both A and B

Answer: b

 [Watch Video Solution](#)

147. Which is not a characteristic of Taenia ?

- A. Apolysis
- B. Proglottides
- C. Metamerism
- D. Strobila

Answer: c



Watch Video Solution

148. Which one can show self fertilization ?

- A. Earthworm
- B. Liver fluke
- C. Fish

D. Roundworm.

Answer: b



Watch Video Solution

149. Excretory organs of flatworms are

A. Malpighian tubules

B. Nephridia

C. Protonephridia

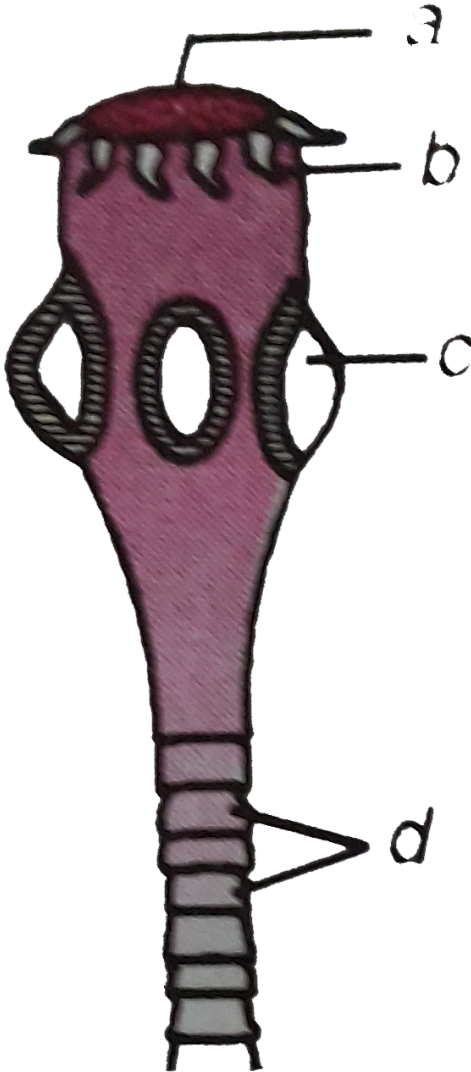
D. Nephron.

Answer: c



Watch Video Solution

150. in the diagram given by the side different parts are indicated by alphabets . Chosse the answer in which these alphbetas correctly match the parts they indicate



A. a - suctorial mouth , b - hooks ,c- sucker ,d- segments

B. a- sucker , b- hairs , c- ring ,d- proglottids

C. a - rostellum , b- hooks , c- sucker , d- proglottids

D. a - mouth b- tentacles , c- sucker , d- segments .

Answer: c



Watch Video Solution

151. the animals having parenchyma in space between body wall and gut is

A. Echinococcus

B. Echinus

C. Enterobius

D. Eunice

Answer: a

 [Watch Video Solution](#)

152. intermediate host of schistosoma is

- A. Sheep
- B. Snail
- C. Mosquito
- D. pig

Answer: b

 [Watch Video Solution](#)

153. Which of the following does not have many segments ?

- A. Lobster
- B. Grasshopper
- C. Earthworm

D. Flatworm

Answer: d



[Watch Video Solution](#)

154. All flatworms differ from all roundworms in having

- A. Solid mesoderm
- B. Bilateral symmetry
- C. Metamorphosis
- D. Triploblastic body

Answer: a



[Watch Video Solution](#)

155. Tapeworms belong to which of the following groups

- A. Annelida
- B. nematoda
- C. Cestoda
- D. Trematoda

Answer: c



[Watch Video Solution](#)

156. Which one of the following kinds of animals are triploblastic

- A. Sponges
- B. Ctenophores
- C. Corals
- D. Flatworms

Answer: d



Watch Video Solution

157. Member of phylum platyhelminthes are called

- A. Flat worms
- B. Round worms
- C. Segmented worms
- D. Walking worms

Answer: a



Watch Video Solution

158. Hexacanth of Taenia reaches heart of pig through vein

- A. Post caval vein

B. Renal vein

C. Hepatic vein

D. Precaval vein

Answer: a



[Watch Video Solution](#)

159. Which parasite is responsible for causing gigantism in its intermediate host

A. Plasmodium vivax

B. Ascaris lumbricoides

C. Sacculina

D. Fasciola hepatica

Answer: d



[Watch Video Solution](#)

160. Match the lists with reference to Taenia

I

- (a) mehlis glands
- (b) vitelline glands
- (c) Mesenchymal cells
- (d) Flame cells

II

- (i) tegument formation
- (ii) Osmoregulation and excretion
- (iii) Lubricate passage of capsules into uterus
- (iv) secretion of embryophore
- (v) Capsule formation around zygote

- A.

<i>a</i>	<i>b</i>	<i>c</i>	<i>d</i>
(iii)	(v)	(i)	(ii)
- B.

<i>a</i>	<i>b</i>	<i>c</i>	<i>d</i>
(iii)	(v)	(ii)	(iv)
- C.

<i>a</i>	<i>b</i>	<i>c</i>	<i>d</i>
(v)	(iii)	(i)	(ii)
- D.

<i>a</i>	<i>b</i>	<i>c</i>	<i>d</i>
(iv)	(iii)	(i)	(ii)

Answer: a



Watch Video Solution

161. Liver rot of sheep is caused by

- A. Fasciola hepatica

B. Planaria

C. Turbellaria

D. Bipalium

Answer: b



Watch Video Solution

162. The cercarial stage of liverfluke is produced by

A. Sexual reproduction

B. Asexual multiplication

C. Binary fission

D. Parthenogenesis

Answer: c



Watch Video Solution

163. which one of the following is an actively swimming free - living and nonfeeding stage of liverfluke

- A. Sporocyst
- B. Redia
- C. Cercaria
- D. Metacercaria

Answer: c



[Watch Video Solution](#)

164. Choose the correct combinations

- (a) Tubellaria-mostly free living flat worms with - convoluta mucus forming rhabdites in body wall
- (b) Trematoda - Commonly called flukes and bear - Bilharzia two suckers
- (c) Cestoda -Ecto - and endoparasite , body segmented -Echinococcus
- (d) Phasmodia - Amphids -forming chemoreceptor function -Trichuris

A. (b) and (c)

B. (a) and (b)

C. (a),(c) and (d)

D. (a) ,(b) and (d).

Answer: b



Watch Video Solution

165. Flame cells of flatworms help in

(i) Osmoregulation

(ii) Digestion

(iii) Reproduction

(iv) Excretion

(v) Bioluminescence

A. (ii) only is correct

B. (i) and (iv) are correct

C. (iii) only is correct

D. (i) and (v) only are correct

Answer: b



Watch Video Solution

166. Gut is found in all but one of the following taxonomic group of platyhelminthes

A. Digenea

B. Cestoda

C. Polyclidia

D. Monogenea

Answer: b



Watch Video Solution

167. A proglottid of Taenia is called gravid only if it has

- A. Both male and female reproductive organs well developed
- B. Only female organs well developed
- C. Well developed uterus filled with eggs
- D. Become dead .

Answer: c



Watch Video Solution

168. The passage of eggs in uterus is lubricated by the secretion from mehlis ' glands in

- A. Liver fluke
- B. Ascaris
- C. Platypus
- D. kangaroo

Answer: a



Watch Video Solution

169. Which one of the following life cycle stage of liver Fluke is infective to the intermediate host

- A. Metacercaria
- B. Miracidia
- C. Sporocyst
- D. Cercaria

Answer: b



Watch Video Solution

170. Echinococcus is an exemple of

A. Nematelminthes

B. Platyheminthes

C. Bacteria

D. Protista

Answer: b



[Watch Video Solution](#)

Check Your Grasp

1. Binary fission occurs in metazoan in

A. Cestoda

B. Turbellaria

C. Trematoda

D. Nematoda

Answer:



[Watch Video Solution](#)

2. A parastic flotwrom which passes out capsules through urine is

- A. Opisthorhic sinensis
- B. Fasciola gigantica
- C. Echinococcus granulosus
- D. Schistsoma haesatiobium

Answer:



[Watch Video Solution](#)

3. Germinal linage hydothesis has been advocated for the larvae of

- A. Fasciola hepatica

B. *Taenia solium*

C. *Ascaris lumbricooides*

D. *Necator lumbricoides*

Answer:



[Watch Video Solution](#)

4. which larval stage can be repeated in the life cycle of *Fasciola hepatica*

A. Miracidium

B. Sporocyst

C. Radia

D. Cercaria

Answer:



[Watch Video Solution](#)

5. in dugessia the development of young ones is

- A. Direct
- B. Indirect by three types of larvae
- C. indirect by two types of larvae
- D. indirect through a larval stage.

Answer:



[Watch Video Solution](#)

6. Schistosomiasis is common in

- A. Farmers
- B. potters
- C. Washermen
- D. All the above

Answer:



Watch Video Solution

7. Tapeworms shows

- A. internal fertilization
- B. self fertilization
- C. Cross fertilization
- D. all the above

Answer:



Watch Video Solution

8. Body is unsegmented and leaf like in

- A. Turbellaria

B. Trematoda

C. Both A and B

D. Cestoda

Answer:



[Watch Video Solution](#)

9. Party ciliated epidermis occurs in

A. Trematoda

B. Turbellaria

C. Cestoda

D. All the above

Answer:



[Watch Video Solution](#)

