



## BIOLOGY

### BOOKS - DINESH PUBLICATION ENGLISH

### STRUCTURAL ORGANISATION IN ANIMALS

#### Multiple Choice Questions

1. Tissue means

- A. Similar cells having common origin
- B. Similar cells having common origin and functions
- C. Cells having same metabolic activities
- D. Similar cells with same metabolic activity.

**Answer: B**



Watch Video Solution

2. Simple tissue is defined as

- A. Group of similar cells which are common in origin.
- B. Different types of cells performing same functions
- C. Different types of cells performing same functions
- D. Organised group of cells performing many functions.

**Answer: A**

 Watch Video Solution

3. Compound tissue is defined as

- A. Similar types of cells held together by connective tissue
- B. Different types of cells which are different in structure and function
- C. Different types of cells performing one function

D. Similar cells at different regions performing many functions.

**Answer: C**



[Watch Video Solution](#)

4. Epithelial cells get nutrient material from

A. Neighbouring cells

B. Blood vessels

C. Lymph vessels

D. Underlying tissue .

**Answer: D**



[Watch Video Solution](#)

5. Microvilli of epithelial cells

- A. Increase surface area
- B. Protect the cells
- C. Engulf the foreign matter
- D. Give movements to the cells .

**Answer: A**

 [Watch Video Solution](#)

**6. Maximum intercellular substance is found in**

- A. Connective tissue
- B. Nervous tissue
- C. Epithelial tissue
- D. Muscular tissue

**Answer: A**

 [Watch Video Solution](#)

7. Squamous epithelium is also called

- A. Germinal epithelium
- B. Columnar epithelium
- C. Pavement epithelium
- D. Sensory epithelium .

**Answer: C**



[Watch Video Solution](#)

8. Epidermis of skin of vertebrates comprises

- A. Simple epithelium
- B. Stratified epithelium
- C. Transitional epithelium

D. Columnar epithelium.

**Answer: B**



[Watch Video Solution](#)

9. Ciliated epithelial cells are present in

- A. Buccal cavity of Frog
- B. Stomach of Frog
- C. Pancreatic duct of Pancreas
- D. None of these.

**Answer: A**



[Watch Video Solution](#)

10. Human mammary glands belong to which one of the following types of glands?

- A. Simple alveolar
- B. Coiled tubular
- C. Compound tubulo- alveolar
- D. Simple tubular .

**Answer: C**



[Watch Video Solution](#)

11. Tessellated epithelium is found in :

- A. Lining of intestine
- B. Lining of blood vessel
- C. Seminiferous tubule
- D. Uriniferous tubules.

**Answer: B**



**Watch Video Solution**

**12. Germinal epithelial cells are present in**

- A. Seminiferous tubules
- B. Uriniferous tubules
- C. Lining of stomach
- D. Inner lining of trachea.

**Answer: A**



**Watch Video Solution**

**13. Where is transitional epithelium found apart from urinary bladder?**

- A. Larynx



B. Vein

C. Kidney

D. Ureter and renal pelvis .

**Answer: D**



**Watch Video Solution**

**14.** Outer layer of skin that frog casts off is composed of

A. Simple squamous epithelium

B. Tesselated epithelium

C. Ciliated epithelium

D. Cuboidal epithelium .

**Answer: A**



**Watch Video Solution**

15. Areolar tissue connects

- A. The skin with muscles
- B. Muscles to muscles
- C. Bone to bone
- D. Bone to muscles .

**Answer: A**



[Watch Video Solution](#)

16. Matrix of the connective tissue is secreted by

- A. Fibrocytes
- B. Histiocytes
- C. Mast cells
- D. Plasma cells.

**Answer: A**



**Watch Video Solution**

**17.** Dermis of the skin is formed of

- (a) Adipose connective tissue
- (b) Epithelial tissue
- (c) Muscular tissue
- (d) Areolar connective tissue

A. Adipose connective tissue

B. Epithelial tissue

C. Muscular tissue.

D. Areolar connective tissue.

**Answer: A**



**Watch Video Solution**

18. Tendon is made up of

- A. Yellow fibrous connective tissue
- B. Adipose tissue
- C. Modified white fibrous tissue
- D. Areolar tissue.

**Answer: A::C**



**Watch Video Solution**

19. Yellow fibres are made up of

- A. Ossein
- B. Elastin
- C. Chondrin
- D. Collagen.

**Answer: B**



**Watch Video Solution**

**20.** When the glandular cells breakdown completely , the gland is known as

- A. Holocrine gland
- B. Apocrine gland
- C. Merocrine gland
- D. None of the above.

**Answer: A**



**Watch Video Solution**

**21.** Perichondrium covers the

A. Bone

B. Cartilage

C. Decalcified bone

D. Dried bone .

**Answer: B**



**Watch Video Solution**

**22.** Hyaline cartilage is present at

(a) The ends of digits

(b) Tip of the nose

(c) Epiglottis of mammals

(d) Articular ends of long bones

A. The ends of digits

B. Tip of the nose

C. Epiglottis of mammals

D. Articular ends of long bones .

**Answer: D**



[Watch Video Solution](#)

**23.** Calcified cartilage is present in

- (a) Pinna
- (b) Supra scapula of pectoral girdle of frog
- (c) Ends of bones
- (d) Intervertebral discs

A. Pinna

B. Supra scapula of pectoral girdle of frog

C. Ends of bones

D. Intervertebral discs.

**Answer: B**



[Watch Video Solution](#)

24. The process of bone formation is called

- A. Ossification
- B. Calcification
- C. Calcination
- D. None of these.

**Answer: A**



[Watch Video Solution](#)

25. Matrix of cartilage is secreted by

- A. Chondrocytes
- B. Chondroblasts
- C. Osteocytes



D. Histiocytes.

**Answer: B**



[Watch Video Solution](#)

**26.** The main difference between bone and cartilage is of

- (a) Mineral salts
- (b) Blood vessels
- (c) Lymph vessels
- (d) Haversian canals

A. Mineral salts

B. Blood vessels

C. Lymph vessels

D. Haversian canals.

**Answer: B**



[Watch Video Solution](#)

27. 60% inorganic components are present in

- A. Cartilage
- B. Bone
- C. Connective tissue
- D. None of these.

**Answer: B**



[Watch Video Solution](#)

28. RBC that lack nuclei when they are mature are of

- A. Frog
- B. Lizard
- C. Man

D. Birds.

**Answer: C**



**Watch Video Solution**

**29.** Blood clot is mainly due to

- A. Plasma and RBC
- B. Plasma and thrombocytes
- C. Heparin and corpuscles
- D. Fibrin and corpuscles.

**Answer: D**



**Watch Video Solution**

**30.** Which of the following is not phagocytic ?

A. Neutrophils

B. Monocytes

C. Lymphocytes

D. Eosinophils .

**Answer: C**



**Watch Video Solution**

**31. Blood platelets are present in the blood of**

A. Fishes

B. Amphibians

C. Reptiles

D. Mammals

**Answer: D**



**Watch Video Solution**

**32.** Agranulocytes normally develop in

- A. Bone marrow
- B. Liver
- C. Lymph glands and spleen
- D. None of these.

**Answer: C**



**Watch Video Solution**

**33.** Granulocytes are produced in

- A. Liver
- B. Bone marrow
- C. Spleen

D. None of these.

**Answer: B**



[Watch Video Solution](#)

**34.** Formation of platelets is known as

- (a) Haemopoiesis
- (b) Thrombopoiesis
- (c) Haemolysis
- (d) None of these

A. Haemopoiesis

B. Thrombopoiesis

C. Haemolysis

D. None of these.

**Answer: B**



[Watch Video Solution](#)

**35.** Percentage of protein is more in

- (a) Lymph
- (b) Blood
- (c) Plasma
- (d) W.B.C.

A. Lymph

B. Blood

C. Plasma

D. W.B.C.

**Answer: B**



**Watch Video Solution**

**36.** Which of the acts as middle man?

- (a) W.B.C.

(b) Plasma

(c) Blood

(d) Lymph

A. W.B.C.

B. Plasma

C. Blood

D. Lymph.

**Answer: D**



**Watch Video Solution**

**37.** In man , the number of R.B.C. per cubic mm of blood is

(a) 1 to 3 millions

(b) 5 to 5.4 millions

(c) Less than one million but more than 50 thousand

(d) Less than 50 thousand



A. 1 to 3 millions

B. 5 to 5.4 millions

C. Less than one million but more than 50 thousand

D. Less than 50 thousand.

**Answer: B**



[Watch Video Solution](#)

**38.** Life span of a W.B.C. in man is

A. 100 days

B. 50 days

C. 7 days

D. None of the above.

**Answer: C**



[Watch Video Solution](#)

**39.** Blood platelets are

- A. Nucleated
- B. Nucleus is many lobed
- C. Nucleus is very small
- D. Denucleated .

**Answer: D**



**Watch Video Solution**

**40.** The diameter of RBC is

- A.  $10.3\mu m$
- B.  $9.2\mu m$
- C.  $7.2\mu m$

D.  $8.1\mu m$ .

**Answer: C**



**Watch Video Solution**

**41.** Formation of antibodies is the function of

A. Monocytes

B. Neutrophils

C. Basophils

D. Lymphocytes.

**Answer: D**



**Watch Video Solution**

**42.** The lifespan of human RBC is

- A. 120 - 128 days
- B. 100 days
- C. Less than 100 days
- D. None of the above.

**Answer: A**

 [Watch Video Solution](#)

**43.** The difference between blood and lymph :

- A. Absence of RBC
- B. Absence of WBC
- C. Number of WBC is less in blood
- D. None of these.

**Answer: A**

 [Watch Video Solution](#)

44. Which blood corpuscle is largest in diameter ?

- A. Erythrocyte
- B. Monocyte
- C. Neutrophil
- D. Lymphocyte.

**Answer: B**



**Watch Video Solution**

45. Which of the W.B.C. has many lobed nucleus ?

- A. Monocytes
- B. Lymphocytes
- C. Neutrophils

D. Basophils.

**Answer: C**



**Watch Video Solution**

**46.** Matrix of bone is arranged

- A. In concentric layers
- B. Not is concentric layers
- C. Matrix forms the ground substance
- D. None of these.

**Answer: A**



**Watch Video Solution**

**47.** Which of the following lack blood supply ?

- A. Bone
- B. Connective tissue
- C. Cartilage
- D. None of these.

**Answer: C**

 [Watch Video Solution](#)

**48.** Volkmann's canal connects

- A. Osteocyte with matrix
- B. Different bones
- C. Haversian canal with matrix
- D. Haversian canal with other Haversian canals.

**Answer: D**

 [Watch Video Solution](#)

**49.** Ossification of connective tissue results in

- A. Cartilage
- B. Sesamoid bone
- C. Membrane bone
- D. None of the above.

**Answer: C**



**Watch Video Solution**

**50.** Bone has longitudinal canals , called

- A. Central canals
- B. Haversian canals
- C. Volkmann's canals



D. None of the above.

**Answer: B**



**Watch Video Solution**

**51.** Hyoid apparatus is composed of

A. Hyaline cartilage

B. Fibrous cartilage

C. Calcified cartilage

D. Elastic cartilage .

**Answer: A**



**Watch Video Solution**

**52.** Intervertebral discs are composed of

- A. Hyaline cartilage
- B. Elastic cartilage
- C. Fibrous cartilage
- D. None of the above.

**Answer: C**

 [Watch Video Solution](#)

**53.** Calcified cartilage is found in humans in

- A. Head of femur
- B. Pectoral girdle
- C. Ribs and sternum
- D. Both A and B .

**Answer: A**

 [Watch Video Solution](#)

54. Ossification is the process by which

- A. Cartilage is formed
- B. Bone is formed
- C. Connective tissue is formed
- D. None of the above.

**Answer: B**



**Watch Video Solution**

55. Supportive connective tissue means

- (a) Tendon
- (b) Cartilage and bone
- (c) Ligament
- (d) Blood and lymph

- A. Tendon
- B. Cartilage and bone
- C. Ligament
- D. Blood and lymph.

**Answer: B**

 [Watch Video Solution](#)

**56.** Yellow fibres are present in

- (a) Bundles
- (b) Singly and branched
- (c) Singly and unbranched
- (d) None of these

- A. Bundles
- B. Singly and branched
- C. Singly and unbranched

D. None of these.

**Answer: B**



**Watch Video Solution**

**57.** Adipose tissues stores

- (a) Protein
- (b) Carbohydrates
- (c) Fat droplets
- (d) All the above

A. Protein

B. Carbohydrates

C. Fat droplets

D. All the above .

**Answer: C**



**Watch Video Solution**

58. In hyaline cartilage , matrix is

- A. Granular
- B. Transparent
- C. Agranular
- D. Semitransparent.

**Answer: D**



[Watch Video Solution](#)

59. Calcified cartilage is

- A. Soft
- B. Hard
- C. Fibrous

D. None of the above.

**Answer: B**



**Watch Video Solution**

**60.** Unstriped muscles are present in the

A. Wall of intestine

B. Leg muscles

C. Muscles of fore limb

D. Heart wall.

**Answer: A**



**Watch Video Solution**

61. Muscle fibres having rounded ends are

- (a) Unstripped muscles
- (b) Smooth muscles
- (c) Striped muscles
- (d) All the above

A. Unstripped muscles

B. Smooth muscles

C. Striped muscles

D. All the above .

**Answer: C**



**Watch Video Solution**

62. Inter-calated discs are present in

A. Cardiac muscles



B. Striped muscles

C. Unstriated muscles

D. Ligament .

**Answer: A**



[Watch Video Solution](#)

**63.** The cytoplasm of muscle fibre is known as :

A. Neuroplasm

B. Protoplasm

C. Germplasm

D. Sarcoplasm.

**Answer: D**



[Watch Video Solution](#)

**64.** Contractile fibrils of muscles are called

- (a) Neurofibrils
- (b) Collagen fibres
- (c) Myofibrils
- (d) Yellow fibres

A. Neurofibrils

B. Callogen fibres

C. Myofibrils

D. Yellow fibres.

**Answer: C**



**Watch Video Solution**

**65.** Each myofibril has a diameter of

- (a) 1 to 2  $\mu\text{m}$
- (b) 0.1 to 0.2  $\mu\text{m}$

(c)  $.001$  to  $.002\mu m$

(d) None of the above

A. 1 to 2  $\mu m$

B. 0.1 to 0.2 $\mu m$

C.  $.001$  to  $.002\mu m$

D. None of the above.

**Answer: A**



**Watch Video Solution**

**66.** Myofibrils show dark and light bands is

A. Cardiac muscles

B. Unstripped muscles

C. Striped muscles

D. Both A and C.

**Answer: D**



**Watch Video Solution**

**67.** Sarcomere is the unit of

- (a) Contraction
- (b) Relaxation
- (c) Contraction and relaxation
- (d) None of the above

A. Contraction

B. Relaxation

C. Contraction and relaxation

D. None of the above.

**Answer: C**



**Watch Video Solution**

68. Myosin filaments are localized in

A. Z - Band

B. H-Band

C. A- Band

D. None of the above.

**Answer: b**



[Watch Video Solution](#)

69. Uninucleate muscles are

A. Smooth muscles

B. Skeletal muscles

C. Voluntary muscles

D. All the above .

**Answer: A**



[Watch Video Solution](#)

**70. Multinucleate muscle cells are**

- (a) Cardiac muscles
- (b) Smooth muscles
- (c) Skeletal muscles
- (d) Both a and c

A. Cardiac muscles

B. Smooth muscles

C. Skeletal muscles

D. Both a and c

**Answer: C**



[Watch Video Solution](#)

71. Which of the muscles are attached to bones?

- (a) Smooth muscles
- (b) Skeletal muscles
- (c) Cardiac muscles
- (d) All the above

A. Smooth muscles

B. Skeletal muscles

C. Cardiac muscles

D. All the above .

**Answer: B**



[Watch Video Solution](#)

72. Chemical ions responsible for muscle contraction are

A. (a)  $Ca^{++}$  and  $K^{+}$

B. (b)  $Na^+$  and  $K^+$

C. (c)  $Na^+$  and  $Ca^+$

D. (d)  $Ca^{++}$  and  $Mg^{++}$  ions.

**Answer: D**



[Watch Video Solution](#)

**73.** Rhythmical contraction is noticed in

A. Cardiac muscles

B. Striped muscles

C. Unstripped muscles

D. In all the muscles.

**Answer: A**



[Watch Video Solution](#)



74. Muscles get fatigued due to accumulation of

- A. Adenosine triphosphate
- B.  $CO_2$
- C. Lactic acid
- D. Phosphate molecules.

**Answer: C**



**Watch Video Solution**

75. Mitochondria are more in

- A. Striated muscles
- B. Cardiac muscles
- C. Smooth muscles
- D. All the above .

**Answer: B**



[Watch Video Solution](#)

**76.** Striped muscle fibres are held together by

- A. Areolar connective tissue
- B. Adipose tissue
- C. White fibrous tissue
- D. Yellow fibrous tissue.

**Answer: A**



[Watch Video Solution](#)

**77.** Major protein constituent of muscle fibre is

- A. Actin

B. Myosin

C. Tropomyosin

D. Reticulin.

**Answer: B**



[Watch Video Solution](#)

**78.** Cardiac sphincter muscle is a circular band of

A. Striated muscles

B. Smooth muscles

C. Cardiac muscles

D. All the above .

**Answer: B**



[Watch Video Solution](#)

79. Cross connections are the characteristic feature of

- A. Cardiac muscles
- B. Striated muscles
- C. Smooth muscles
- D. None of the above.

**Answer: A**



**Watch Video Solution**

80. Centrosome is not present in

- A. Nerve cells
- B. Epithelial cells
- C. Germinal cells
- D. All the above .

**Answer: A**



**Watch Video Solution**

**81.** Neurilemma is outer covering of

- A. Blood capillaries
- B. Muscle fibre
- C. Intestine
- D. Nerve fibre.

**Answer: D**



**Watch Video Solution**

**82.** Nervous tissue originates from

- A. Endoderm

B. Ectoderm

C. Mesoderm

D. Mesoderm and ectoderm.

**Answer: B**



[Watch Video Solution](#)

**83. Unipolar nerve cell means**

A. Nerve cell with one dendron

B. Nerve cell with many dendrons

C. Nerve cell without dendron

D. None of the above.

**Answer: c**



[Watch Video Solution](#)

**84.** Multipolar neuron means

- A. With one dendron and one axon
- B. With many dendrons and one axon
- C. With one dendron and no axons
- D. With many dendrons and no axons.

**Answer: B**



**Watch Video Solution**

**85.** Neuro- fibrils are present in

- A. Cyton
- B. Muscles
- C. Bones
- D. Connective tissue.

**Answer: A**



**Watch Video Solution**

**86.** Plasmalemma of axon is called

- A. Axolemma
- B. Neurilemma
- C. Sacrolemma
- D. None of these.

**Answer: A**



**Watch Video Solution**

**87.** Collateral fibres are given out along its way in

- A. Muscle fibre



B. Axon

C. Dendron

D. Dendrites.

**Answer: B**



[Watch Video Solution](#)

**88.** Myelin sheath is present around the

A. Non- medullated nerve fibre

B. Medullated nerve fibre

C. Medullated and non-medullated nerve fibres

D. Muscle fibres.

**Answer: B**



[Watch Video Solution](#)

89. Which of the following possesses nodes of Ranvier ?

- A. Medullated nerve fibre
- B. Non - medullated nerve fibre
- C. Muscle fibre
- D. Medullated and non-medullated nerve fibres.

**Answer: A**



[Watch Video Solution](#)

90. The packing cells around nerve cells in brain are called

- A. Histiocytes
- B. Mast cells
- C. Matrix
- D. Neuroglia cells.

**Answer: D**



**Watch Video Solution**

**91.** Bipolar nerve cells are present in

- A. Skin tactile corpuscles
- B. Spinal cord
- C. Retina of eye
- D. All the above .

**Answer: C**



**Watch Video Solution**

**92.** Multipolar nerve cells are present in

- A. Cochlea

B. Dorsal root ganglia of spinal cord

C. Retina of eye

D. Brain.

**Answer: D**



[Watch Video Solution](#)

**93. Neuroglia cells are**

A. Astrocytes

B. Oligodendrocytes

C. Microglia

D. All the above .

**Answer: D**



[Watch Video Solution](#)

94. Sensory epithelial cells are modified

- A. Nerve cells
- B. Columnar cells
- C. Glandular cells
- D. None of these.

**Answer: B**



**Watch Video Solution**

95. Apocrine secretion of gland means

- A. When the product is released but the cell remains intact
- B. When entire contents of cell is discharged with the destruction of the cell
- C. When part of apical cytoplasm is lost

D. None of these.

**Answer: C**



**Watch Video Solution**

**96.** Wandering cells are

A. Histiocytes

B. Mast cells

C. Leucocytes

D. All the above .

**Answer: C**



**Watch Video Solution**

**97.** Which of the following cells contain fat droplets ?

A. Macrophages

B. Plasma cells

C. Adipose cells

D. Leucocytes.

**Answer: C**



**Watch Video Solution**

**98.** Pigment tissue is present in

A. Choroid

B. Iris

C. Skin

D. All the above .

**Answer: D**



**Watch Video Solution**

**99.** In man the amount of blood is

- A. 4 % to 5 %
- B. 10 % to 15 %
- C. 7 to 8 %
- D. More than 15 %

**Answer: C**



**Watch Video Solution**

**100.** Blood plasma is

- A. Alkaline
- B. Acidic
- C. Neutral



D. None of these.

**Answer: A**



**Watch Video Solution**

**101.** Diapedesis means

A. Movement of the food in gut

B. Formation of W.B.C.

C. The process by which leucocytes squeeze through thin capillary wall

D. Formation of R.B.C.

**Answer: C**



**Watch Video Solution**

**102.** Number of R.B.C. is more in persons living at hills because

- A. There is less oxygen
- B. Air is more purified
- C. Heat is required to warm the body
- D. None of these.

**Answer: A**

 [Watch Video Solution](#)

**103.** Name the cells which help in clotting of blood in mammals

- A. Platelets
- B. Thrombocytes
- C. Lymphocytes
- D. Monocytes.

**Answer: A**

 [Watch Video Solution](#)

**104.** Respiratory pigment found in R.B.C. is known as

- A. Haemocyanin
- B. Haemoglobin
- C. Haemocyanin and haemoglobin
- D. None of these.

**Answer: B**



[Watch Video Solution](#)

**105.** Haemorrhagic disorder occurs when the platelet count falls to less than

- A. 1,50,000 /  $mm^3$
- B. 1,00,000/ $mm^3$
- C. 75,000/ $mm^3$

D. 50,000/  $\text{mm}^3$

**Answer: D**



[Watch Video Solution](#)

**106.** Collagen is

A. Protein

B. Fat

C. Sugar

D. Starch.

**Answer: A**



[Watch Video Solution](#)

**107.** Plasma has water to the extent of

A. 80 %

B. 60 %

C. 70 %

D. 90 %

**Answer: D**



[Watch Video Solution](#)

**108.** Blood platelets are

A. Nucleated cells

B. Non- nucleated cells

C. Non-nucleated cell fragments

D. Nucleated cell fragments.

**Answer: C**



[Watch Video Solution](#)

**109.** Instead of platelets , the non - mammals possess clotting factor in

A. Nucleated cells called thrombocytes

B. RBC

C. WBC

D. Plasma.

**Answer: A**



**Watch Video Solution**

**110.** Sprain is caused by

A. Muscles

B. Ligaments

C. Tendons

D. Nerves.

**Answer: B**



[Watch Video Solution](#)

**111.** Which of the following tissues has the minimum intercellular matrix ?

A. Blood

B. Bone

C. Cartilage

D. Areolar tissue.

**Answer: B**



[Watch Video Solution](#)

**112.** Collagen fibres are

- A. White
- B. Yellow
- C. Pale
- D. Brown .

**Answer: A**

 [Watch Video Solution](#)

**113. Ligament connects**

- A. Muscle to skin
- B. Bone to bone
- C. Muscle to muscle
- D. Muscle to bone .

**Answer: B**

 [Watch Video Solution](#)



**114.** The bones marrow is composed of

- A. Areolar tissue and blood vessels
- B. Adipose tissue and fibroblasts
- C. Adipose tissue , areolar tissue and blood
- D. Adipose and areolar tissue .

**Answer: C**



**Watch Video Solution**

**115.** Sarcolemma is a membrane found over

- A. Muscle fibre
- B. Cartilage
- C. Never fibre

D. Collagen fibre.

**Answer: A**



[Watch Video Solution](#)

**116.** Power of regeneration is poor in

A. Brain cell

B. Bone cell

C. Chondroblasts

D. Striated muscles.

**Answer: A**



[Watch Video Solution](#)

**117.** Basic unit of muscle contraction is

A. Actin

B. Myosin

C. Sarcomere

D. Tropomyosin.

**Answer: C**



**Watch Video Solution**

**118. Muscle immune to fatigue are**

A. Striped

B. Unstriped

C. Cardiac

D. Eye muscles.

**Answer: C**



**Watch Video Solution**

**119.** Number of nuclei present in striped muscle fibre is

- A. One
- B. Many
- C. Two
- D. None.

**Answer: B**



**Watch Video Solution**

**120.** Characteristics of smooth muscle fibres are

- A. Spindle -shaped , unbranched , unstriated , uninucleate and involuntary

- B. Spindle -shaped , unbranched , unstriated , multinucleate and involuntary
- C. Cylindrical , unbranched , unstriated , multinucleate and involuntary
- D. Cylindrical , unbranched , striated , multinucleate and voluntary.

**Answer: A**

 [Watch Video Solution](#)

**121.** Tendons and ligaments belong to

- A. Muscular tissue
- B. Epithelial tissue
- C. Fibrous connective tissue
- D. Areolar connective tissue.

**Answer: C**

 [Watch Video Solution](#)

**122.** The cells of cartilage are called

- A. Osteocytes
- B. Chondrocytes
- C. Osteoblasts
- D. Odontoblasts.

**Answer: B**



**Watch Video Solution**

**123.** Difference between bone and cartilage is of

- A. Collagen
- B. Blood vessels
- C. Lymphatic vessels

D. Haversian canals.

**Answer: D**



**Watch Video Solution**

**124.** Tendon connects

A. Bone to bone

B. Bone to muscle

C. Nerve to muscle

D. Muscle to muscle .

**Answer: B**



**Watch Video Solution**

**125.** Endothelium lining a blood vessel is formed of

- A. Ciliated epithelium
- B. Columnar epithelium
- C. Cuboidal epithelium
- D. Simple squamous epithelium .

**Answer: D**

 [Watch Video Solution](#)

**126.** Ciliated epithelium is found in the lining of

- A. Stomach
- B. Trachea/Bronchus
- C. Duodenum
- D. Ileum.

**Answer: B**

 [Watch Video Solution](#)



127. The epithelium found in the lining layer of stomach and intestine is

- A. Columnar
- B. Squamous
- C. Stratified
- D. Pseudostratified.

**Answer: A**



[Watch Video Solution](#)

128. Epithelium present in cornea , oesophagus , urethra and vagina is

- A. Glandular
- B. Ciliated
- C. Stratified columnar

D. Stratified squamous .

**Answer: D**



**Watch Video Solution**

**129.** A bone kept in dil HCl for three days shall

A. Remain unaltered

B. Become soft

C. Break in pieces

D. Dissolve completely.

**Answer: B**



**Watch Video Solution**

**130.** Heart muscles are

A. Voluntary and unstriated

B. Voluntary and striated

C. Involuntary and striated

D. Involuntary unstriated.

**Answer: C**



**Watch Video Solution**

**131. Skeletal tissue found in mammalian pinna is**

A. Calcified cartilage

B. Fibrous cartilage

C. Simple cartilage

D. Elastic cartilage .

**Answer: D**



**Watch Video Solution**

**132.** Tissue connecting bones is

- A. Tendon
- B. Ligament
- C. Areolar tissue
- D. Adipose tissue.

**Answer: B**



**Watch Video Solution**

**133.** Striated and voluntary muscles occur in

- A. Trachea
- B. Lungs
- C. Gall bladder

D. Limbs.

**Answer: D**



[Watch Video Solution](#)

**134.** Heart muscles are

A. Visceral

B. Smooth

C. Skeletal

D. Cardiac.

**Answer: D**



[Watch Video Solution](#)

**135.** Bundles of striated muscle fibres are enclosed in

- A. Periosteum
- B. Epimysium
- C. Perimysium
- D. Endomysium.

**Answer: B**

 [Watch Video Solution](#)

**136.** Nissl granules occur in

- A. Bone cells
- B. Mast cells
- C. Nerve cells
- D. Chondrocytes .

**Answer: C**

 [Watch Video Solution](#)

137. Nissl granules found in cyton of a neuron and having affinity for basic dyes are composed of

- A. DNA
- B. RNA
- C. Proteins
- D. Amino acids

**Answer: B**



[Watch Video Solution](#)

138. Area of coming together of two neuron ends or between a dendron and axon ends is

- A. Junction
- B. Synapsis

C. Synapse

D. Synapticula.

**Answer: C**



**Watch Video Solution**

**139.** Haversian canals are found in

A. Muscle

B. Nerve

C. Cartilage

D. Bone .

**Answer: D**



**Watch Video Solution**



**140.** Membrane lining the marrow cavity is

- A. Endosteum
- B. Periosteum
- C. Perichondrium
- D. Pericardium.

**Answer: A**



**Watch Video Solution**

**141.** Haversian canals are found in the

- A. Ear
- B. Mammalian bone
- C. Fish and amphibian bone
- D. Simple sponges.

**Answer: B**



**Watch Video Solution**

**142.** Blood is a

- A. Epithelial tissue
- B. Nervous tissue
- C. Connective tissue
- D. Muscular tissue.

**Answer: C**



**Watch Video Solution**

**143.** Lymph differs from blood in possessing

- A. Only WBC

B. More RBC and WBC

C. More RBC and few WBC

D. More WBC and few RBC.

**Answer: A**



[Watch Video Solution](#)

**144.** Mineral found in red pigment of vertebrate blood is

A. Magnesium

B. Iron

C. Calcium

D. Copper.

**Answer: B**



[Watch Video Solution](#)

**145.** Histamine secreting cells are found in

- A. Connective tissue
- B. Lungs
- C. Muscular tissue
- D. Nervous tissue.

**Answer: A**



**Watch Video Solution**

**146.** Erythropoiesis starts in

- A. Bone marrow
- B. Spleen
- C. Liver
- D. Thymus.

**Answer: A**



**Watch Video Solution**

**147.** Where would you find mast cells?

- A. Areolar tissue
- B. Adipose tissue
- C. White fibrous tissue
- D. Yellow fibrous tissue.

**Answer: A**



**Watch Video Solution**

**148.** Transitional epithelium occurs in

- A. Blood vessels

B. Trachea

C. Kidney

D. Ureter/Urinary bladder.

**Answer: D**



[Watch Video Solution](#)

**149.** Pseudostratified columnar epithelium is found in

A. Mouth

B. Stomach/Oesophagus

C. Kidney

D. Trachea/ Bronchi/Bronchiole/Nasal cavity.

**Answer: D**



[Watch Video Solution](#)

150. The hardest substance in your body is :

- A. Bone
- B. Enamel
- C. Cartilage
- D. Tendon.

**Answer: B**



**Watch Video Solution**

151. Haversian canal is found in

- A. Humerus
- B. Pubis
- C. Scapula
- D. Clavicle .

**Answer: A**



[Watch Video Solution](#)

**152.** Multi-unit smooth muscle is seen in

- A. Large blood vessels
- B. Intestine
- C. Stomach
- D. Urinary bladder .

**Answer: A**



[Watch Video Solution](#)

**153.** Large irregular, amoeboid cells in the areolar tissue derived from monocytes are



A. Fibroblasts

B. Macrophages

C. Mast cells

D. Chromatophores.

**Answer: C**



**Watch Video Solution**

**154.** B- and T-cells required for immune system are produced in

A. Bone marrow

B. Liver

C. Spleen

D. Lymph nodes.

**Answer: A**



**Watch Video Solution**

**155.** Mast cells secrete

- A. Serotonin
- B. Heparin
- C. Histamine
- D. All the above .

**Answer: D**



**Watch Video Solution**

**156.** Epithelium forming the inner layer of urinary bladder is

- A. Simple squamous
- B. Transitional
- C. Simple columnar

D. Neurosensory.

**Answer: B**



**Watch Video Solution**

**157.** A human RBC is placed in 1.5% salt solution . It will :-

A. Shrink

B. Burst

C. Remain unaffected

D. Swell up.

**Answer: A**



**Watch Video Solution**

158. In normal healthy female, the number of

$RB \frac{C}{m} m^3$  of blood is

A.  $6 \cdot 5 - 7 \cdot 0$  million

B.  $5 \cdot 5 - 6 \cdot 0$  million

C.  $4 \cdot 5 - 5 \cdot 0$  million

D.  $3 \cdot 5 - 4 \cdot 0$  million

**Answer: C**



[Watch Video Solution](#)

159. Bone forming cells are

A. Osteoblasts

B. Osteoclasts

C. Chondroclasts

D. Chondroblasts.

**Answer: A**



[Watch Video Solution](#)

**160.** Component of blood responsible for producing antibodies is

- A. Thrombocytes
- B. Monocytes
- C. Erythrocytes
- D. Lymphocytes.

**Answer: D**



[Watch Video Solution](#)

**161.** Afferent nerve fibre carries impulses from

- A. Effector to central nervous system

- B. Receptor to central nervous system
- C. Central nervous system to muscles
- D. Central nervous system to receptors.

**Answer: B**



**Watch Video Solution**

**162.** Formation of cartilage bones involves

- A. Deposition of bony matter by osteoblasts and resorption by chondroclasts
- B. Deposition of bony matter by osteoclasts and resorption by chondroblasts
- C. Deposition of bony matter by osteoclasts only
- D. Deposition of bony matter by osteoblasts only.

**Answer: A**



[Watch Video Solution](#)

**163.** Vitamin K is required for

- A. Formation of thromboplastin
- B. Conversion of fibrinogen to fibrin
- C. Conversion of prothrombin to thrombin
- D. Synthesis of prothrombin .

**Answer: D**



[Watch Video Solution](#)

**164.** The lifespan of human RBC is

- A. 50 days
- B. 75 days
- C. 120 days

D. 100 days.

**Answer: C**



**Watch Video Solution**

**165.** Horizontal /oblique canals found in long bones of mammals are

- A. Haversian canals
- B. Volkmann's canals
- C. Canaliculi
- D. Neural canal.

**Answer: B**



**Watch Video Solution**

**166.** Muscles are connected to humerus by means of



A. Cartilage

B. Ligament

C. Tendon

D. Adipose tissue.

**Answer: C**



**Watch Video Solution**

**167.** Nodes of Ranvier occur in

A. Cell body

B. Right atrium

C. Right ventricle

D. Medullated nerve fibres.

**Answer: D**



**Watch Video Solution**

**168.** R.B.C. are found stored in

- A. Bone Marrow
- B. Liver
- C. Spleen
- D. All of the above.

**Answer: C**



**Watch Video Solution**

**169.** Formation of red blood is called

- A. Haemocytosis
- B. Haemolysis
- C. Haemopoiesis

D. Haemocytolysis.

**Answer: C**



**Watch Video Solution**

**170.** The surface of nerve fibres bear narrow areas called

A. Schwann cells

B. Schwann nodes

C. Nissl granules

D. Nodes of Ranvier.

**Answer: D**



**Watch Video Solution**

**171.** Besides calcium phosphate the bones contain

- A. Calcium chloride
- B. Magnesium carbonate
- C. Sodium chloride
- D. Magnesium phosphate.

**Answer: D**

 [Watch Video Solution](#)

**172.** Cells of squamous epithelium are

- A. Columnar
- B. Tall with elongated nuclei
- C. Flat plate-like
- D. Cube-like .

**Answer: C**

 [Watch Video Solution](#)

**173.** Fat is stored in

- A. Liver cells
- B. Alveolar tissue
- C. Adipose tissue
- D. Lymph glands.

**Answer: C**



**Watch Video Solution**

**174.** Blood consists of

- A. Plasma + RBC
- B. Plasma + WBC + RBC
- C. Plasma + RBC + WBC + Platelets

D. Plasma + Bone marrow cells.

**Answer: C**



[Watch Video Solution](#)

**175.** The chief difference between the erthrocytes of man and frog is

- A. Enucleate RBCs in frog
- B. Only human RBCs have haemoglobin
- C. Humans RBCs have more nuclei
- D. Human RBCs are without nuclei.

**Answer: D**



[Watch Video Solution](#)

**176.** Most of the human neurons are :

A. Multipolar

B. Bipolar

C. Unipolar

D. Pseudo-unipolar.

**Answer: A**



**Watch Video Solution**

**177.** Location of the epithelial tissue with thin flat cells appearing like packed tiles is

A. Inner lining of cheek

B. Inner lining of stomach

C. Inner lining of fallopian tubes

D. Outer surface of ovary.

**Answer: A**



[Watch Video Solution](#)

**178.** In Camel, the humps in mainly made of tissue

- A. Areolar
- B. Adipose
- C. Muscular
- D. Skeleton .

**Answer: B**



[Watch Video Solution](#)

**179.** Blood platelets are present in the blood of

- A. Birds
- B. Mammals
- C. Reptiles



D. Amphibians.

**Answer: B**



**Watch Video Solution**

**180.** Granulocytes are produced in

A. Liver

B. Red bone marrow

C. Kidney

D. Small intestine .

**Answer: B**



**Watch Video Solution**

**181.** Blood is

- A. Acidic
- B. Alkaline
- C. Neutral
- D. Variable .

**Answer: B**

 [Watch Video Solution](#)

**182.** Red cell count is carried out by

- A. Haemocytometer
- B. Haemoglobinometer
- C. Sphygmomanometer
- D. Electrocardiogram.

**Answer: A**

 [Watch Video Solution](#)

**183.** In camel, erythrocytes are

- A. Circular , biconcave , non-nucleated
- B. Oval and nucleated
- C. Circular , biconcave and nucleated
- D. Oval and non-nucleated.

**Answer: D**



**Watch Video Solution**

**184.** Blood clotting requires

- A.  $Na^+$  and  $K^+$
- B.  $Na^+$  and prothrombin
- C.  $Na^+$  and thromboplastin

D.  $Ca^{2+}$  and thromboplastin .

**Answer: D**



[Watch Video Solution](#)

**185.** Compound squamous epithelium occurs in

A. Stomach

B. Pharynx

C. Intestine

D. Trachea.

**Answer: B**



[Watch Video Solution](#)

**186.** Smooth muscles occur in

A. Vein

B. Artery

C. Uterus

D. All the above .

**Answer: D**



[Watch Video Solution](#)

**187.** Mammalian erythrocytes are

A. Circular

B. Biconcave

C. Non-nucleated

D. All the above .

**Answer: D**



[Watch Video Solution](#)

**188.** Muscles develop from

- A. Ectoderm
- B. Mesoderm
- C. Endoderm
- D. All the above .

**Answer: B**



**Watch Video Solution**

**189.** Bone marrow takes part in

- A. Controlling blood pressure
- B. As haemopoietic tissue
- C. Assisting kidneys

D. Assisting liver.

**Answer: B**



**Watch Video Solution**

**190.** Epithelial tissue is found in

- A. Protective covering
- B. Reproductive structure
- C. Nerve cells
- D. Corpuscles.

**Answer: A**



**Watch Video Solution**

**191.** Muscular tissue is differentiated into

- A. Striped and cardiac
- B. Unstriated , striated and cardiac
- C. Cardiac and unstriated
- D. Striped and unstriated.

**Answer: B**

 [Watch Video Solution](#)

**192.** Units of nervous system are

- A. Cytons
- B. Axons
- C. Neurons
- D. Dendrites.

**Answer: C**

 [Watch Video Solution](#)



**193.** Agranulocytes are

- A. Eosinophils and neutrophils
- B. Monocytes and lymphocytes
- C. Eosinophils and lymphocytes
- D. Lymphocytes and basophils.

**Answer: B**



**Watch Video Solution**

**194.** In embryonic stage , erythrocytes develop from

- A. Bone marrow
- B. Liver and kidney
- C. Spleen and kidney

D. Liver and spleen.

**Answer: D**



[Watch Video Solution](#)

**195.** Striated muscles are

- A. Syncytial
- B. Multinucleate
- C. With large number of sarcomeres
- D. All the above.

**Answer: D**



[Watch Video Solution](#)

**196.** Epithelium of bronchi is

- A. Simple cuboidal
- B. Pseudostratified columnar
- C. Simple squamous
- D. Pseudostratified sensory.

**Answer: B**

 [Watch Video Solution](#)

**197.** Platelets are a source of

- A. Fibrinogen
- B. Calcium
- C. Thromboplastin
- D. Haemoglobin.

**Answer: C**

 [Watch Video Solution](#)

**198.** Which is unrelated to blood plasma?

A. Fibrinogen

B. Fibrin

C. Bilirubin

D. Calcium.

**Answer: C**



**Watch Video Solution**

**199.** Stratified and non-keratinised squamous epithelium occurs in

(a) Epidermis of skin

(b) Vagina and cervix

(c) Buccal cavity

(d) Both b and c

A. Epidermis of skin

B. Vagina and cervix

C. Buccal cavity

D. Both B and C.

**Answer: D**



**Watch Video Solution**

**200.** Major component of blood plasma is

A. Water

B. Inorganic substances

C. Organic substances

D. Blood cells .

**Answer: A**



**Watch Video Solution**

**201.** Connective tissue belongs to

- A. Ectoderm
- B. Mesoderm
- C. Endoderm
- D. Any of the above.

**Answer: B**



**Watch Video Solution**

**202.** Which one is unrelated?

- A. Keratin
- B. Elastin
- C. Dextrin

D. Collagen.

**Answer: C**



**Watch Video Solution**

**203.** Thromboplastin required for blood clotting is produced by

- A. Platelets
- B. Erythrocytes
- C. Monocytes
- D. Lymphocytes.

**Answer: A**



**Watch Video Solution**

**204.** Which one has alternate striations and is correctly matched ?

A. Biceps under autonomous control

B. Iris muscles under control of will

C. Heart muscles , involuntary

D. Muscles of visceral organs under autonomous control .

**Answer: C**



[Watch Video Solution](#)

**205.** Maximum number of white blood corpuscles is that of

A. Basophils

B. Neutrophils

C. Monocytes

D. Eosinophils .

**Answer: B**



[Watch Video Solution](#)



206. Protein present in cartilage is

- A. Cartilagin
- B. Chondrin
- C. Ossein
- D. Oesein.

**Answer: B**



[Watch Video Solution](#)

207. Nissl granules are made up of

- A. Ribosomes/RER
- B. SER
- C. DNA

D. Golgi bodies.

**Answer: A**



[Watch Video Solution](#)

**208.** Basement membrane is made up of

A. Epidermal cells

B. Endodermal cells

C. Both A and B

D. None of the above but present below epithelial cells.

**Answer: D**



[Watch Video Solution](#)

**209.** The lifespan of human white blood corpuscles is

- A. 24 hours
- B. Less than 10 days
- C. 120 days
- D. 100 hours.

**Answer: B**

 [Watch Video Solution](#)

**210.** Inner lining of gut, stomach and liver is made of

- (a) Simple squamous epithelium
- (b) Simple columnar epithelium
- (c) Simple cuboidal epithelium
- (d) All the above

- A. Simple squamous epithelium
- B. Simple columnar epithelium
- C. Simple cuboidal epithelium

D. All the above.

**Answer: B**



**Watch Video Solution**

**211.** Which of the following are involved in body defense?

A. Neutrophils

B. Lymphocytes

C. Macrophages

D. All the above.

**Answer: D**



**Watch Video Solution**

**212.** Bone marrow occurs in

- A. Ribs and sternum
- B. Ribs, sternum and cranium
- C. Ribs and cranium
- D. Only ribs.

**Answer: B**

 [Watch Video Solution](#)

**213.** Largest corpuscles of mammalian blood are

- A. Erythrocytes
- B. Monocytes
- C. Lymphocytes
- D. Basophils.

**Answer: B**

 [Watch Video Solution](#)

**214.** Heparin is formed by

- A. Liver cells
- B. Plasma cells
- C. Blood cells
- D. Spleen cells.

**Answer: A**



**Watch Video Solution**

**215.** Prothrombin, albumin, and fibrinogen are synthesized by

- A. Pancreas
- B. Bone marrow
- C. Spleen

D. Liver .

**Answer: D**



**Watch Video Solution**

**216.** Regeneration of cartilage can occur from its

A. Matrix

B. Plasma

C. Perichondrium

D. A piece without perichondrium .

**Answer: C**



**Watch Video Solution**

**217.** Where would you find mast cells?

A. Connective tissue

B. Epithelial tissue

C. Skeletal tissue

D. Nervous tissue.

**Answer: A**



[Watch Video Solution](#)

**218.** Ground substance of connective tissue is formed of

A. Phospholipids

B. Lipids

C. Monosaccharides

D. Mucopolysaccharides.

**Answer: D**



[Watch Video Solution](#)



**219.** matrix of hyaline cartilage contains

- A. Collagen
- B. Chondrin
- C. Ossein
- D. All the above.

**Answer: B**



**Watch Video Solution**

**220.** Ends of long bones are covered with

- A. Blood cells
- B. Ligaments
- C. Muscles

D. Cartilage .

**Answer: D**



**Watch Video Solution**

**221.** Erythrocytes of adult mammals are formed in

A. Spleen

B. Liver

C. Bone marrow

D. Kidney.

**Answer: C**



**Watch Video Solution**

**222.** Histamine is secreted by

- A. Mast cells
- B. Histiocytes
- C. Lymphocytes
- D. Fibroblasts.

**Answer: A**

 [Watch Video Solution](#)

**223. Blood leukocytes are**

- A. Epithelial
- B. Endothelial
- C. Glandular
- D. Connective .

**Answer: D**

 [Watch Video Solution](#)

**224.** Intercalated discs are found in

- A. Skeletal muscle fibres
- B. Smooth muscles fibres
- C. Cardiac muscle fibres
- D. None of the above.

**Answer: C**



**Watch Video Solution**

**225.** Which one is a factor for maturation of erythrocytes?

- A. Vitamin  $B_{12}$
- B. Vitamin A
- C. Vitamin D

D. Vitamin C.

**Answer: A**



**Watch Video Solution**

**226.** Which is not part of nervous system?

A. Cyton

B. Axon

C. Myelin

D. Intermedin.

**Answer: D**



**Watch Video Solution**

**227.** Gastric glands are

- (a) Simple tubular
- (b) Simple coiled tubular
- (c) Branched tubular
- (d) Compound tubular

- A. Simple tubular
- B. Simple coiled tubular
- C. Branched tubular
- D. Compound tubular .

**Answer: C**



**Watch Video Solution**

**228.** Regeneration after injury is absent in

- A. Nervous tissue

B. Skin epidermis

C. Tendon

D. Smooth muscles.

**Answer: A**



**Watch Video Solution**

**229.** What is the oxidation state of iron in haemoglobin ?

A. Unionic

B.  $Fe^{2+}$

C.  $Fe^{3+}$

D. None of the above.

**Answer: B**



**Watch Video Solution**

**230.** Chylomicrons are

- A. Fat droplets coated with phospholipids
- B. Fat droplets coated with cholesterol and protein
- C. Undigested proteins
- D. Undigested carbohydrates .

**Answer: B**



**Watch Video Solution**

**231.** Brush border epithelium occurs in

- A. Trachea
- B. Stomach
- C. Small intestine
- D. Fallopian tube



**Answer: C**



**Watch Video Solution**

**232.** White fibrous tissue is

- A. Nervous
- B. Muscular
- C. Ligament
- D. Tendon.

**Answer: D**



**Watch Video Solution**

**233.** Loose connective tissue is

- A. Areolar

B. Adipose

C. Blood

D. Cartilage.

**Answer: A**



[Watch Video Solution](#)

**234.** Ensheathing tissue of muscles is called

A. Tendon

B. Fascia

C. Peritoneum

D. Ligament .

**Answer: B**



[Watch Video Solution](#)

235. Which one is the principal cation in the plasma of blood ?

A.  $K^+$

B.  $Na^+$

C.  $Ca^{2+}$

D.  $Mg^{2+}$

**Answer: B**



[Watch Video Solution](#)

236. Ligament is a

A. Modified white fibrous tissue

B. Inelastic white fibrous tissue

C. Modified elastic connective tissue

D. None of the above.

**Answer: C**



[Watch Video Solution](#)

**237.** Food reserve in muscles is

A. Glycogen

B. Fat

C. Protein

D. Phosphogen.

**Answer: A**



[Watch Video Solution](#)

**238.** Striped muscles are

A. Syncytial

B. Uninucleate

C. Binucleate

D. Anucleate.

**Answer: A**



[Watch Video Solution](#)

**239. pH of blood**

A. 8 · 4

B. 7 · 4

C. 6 · 4

D. 5 · 4

**Answer: B**



[Watch Video Solution](#)

**240.** Which of the following has non-myelinated nerve fibre

- A. Cranial nerves
- B. Autonomic nerves
- C. Optic nerves
- D. Spinal nerves .

**Answer: B**



**Watch Video Solution**

**241.** Adjacent epithelial cells are held together by means of

- (a) Liposomes
- (b) Glyoxisomes
- (c) Desmosomes
- (d) Microsomes

A. Liposomes

B. Glyoxisomes/glyoxysomes

C. Desmosomes

D. Microsomes.

**Answer: C**



**Watch Video Solution**

**242.** Percentage of haemoglobin in RBCs is

A. 0.1

B. 0.2

C. 0.34

D. 0.48

**Answer: C**



**Watch Video Solution**

**243.** Vertebrate salivary glands and exocrine part of pancreas are

- (a) Apocrine
- (b) Holocrine
- (c) Epicrine
- (d) Merocrine

- A. Apocrine
- B. Holocrine
- C. Both A and B
- D. Merocrine .

**Answer: D**



**Watch Video Solution**

**244.** Immature RBCs of mammals have

- A. No nucleus



B. Single beaded nucleus

C. Many nuclei

D. Single nucleus .

**Answer: D**



**Watch Video Solution**

**245.** The cytoplasm of muscle fibre is known as :

A. Neuroplasm

B. Sarcoplasm

C. Axoplasm

D. Sarcolemma.

**Answer: B**



**Watch Video Solution**

**246.** Match the columns

Column I	Column II
<i>a</i> Cartilage	<i>p</i> Neurilemma
<i>b</i> Bone	<i>q</i> Sarcolemma
<i>c</i> Muscle Fibre	<i>r</i> Perichondrium
<i>d</i> Neuron	<i>s</i> Periosteum
	<i>t</i> Pericardium

A. a-r , b-s, c-q, d-p

B. a-r , b-t , c-q, d-p

C. a-r, b-s, c-q, d-t

D. a-r,b-s , c-p , d-q

**Answer: A**



**Watch Video Solution**

**247. Match the columns**

	Column I		Column II
<i>a</i>	Erythrocytes	<i>p</i>	Bone
<i>b</i>	Chondrocytes	<i>q</i>	Neuron
<i>c</i>	Osteocytes	<i>r</i>	Cartilage
<i>d</i>	Schwann cells	<i>s</i>	Blood
—	—	<i>t</i>	Adipose Tissue

A. a-s, b-p , c-r , d-q

B. a-s, b-q , c-p , d-t

C. a-s , b-r , c-p , d-q

D. a-s , b-r , c-t , d-p

**Answer: C**



**Watch Video Solution**

**248.** Match the columns

	Column I		Column II
<i>a</i>	Ligament	<i>p</i>	Stores Fat
<i>b</i>	Tendon	<i>q</i>	Connects Bone to Bone
<i>c</i>	Areolar Tissue	<i>r</i>	Connects Muscle to Bone
<i>d</i>	Adipose Tissue	<i>s</i>	Forms Blood cells
—	—	<i>t</i>	Filling Tissue

A. a-q, b-r, c-t, d-s

B. a-q, b-r, c-t, d-p

C. a-q, b-r, c-p, d-s

D. a-q, b-s, c-t, d-q

**Answer: B**



**Watch Video Solution**

**249.** In skeletal muscle Z-line is connected to

A. Actin

B. Myosin

C. Tropomyosin

D. Hensen's line.

**Answer: A**



**Watch Video Solution**

**250.** Processes of osteocytes lie in

A. Dendrites

B. Haversian canals

C. Canaliculi

D. Lamella.

**Answer: C**



**Watch Video Solution**

**251. Megakaryocytes**

- A. Produce leucocytes
- B. Form blood platelets
- C. Are called bone cells.
- D. Are carriers of oxygen.

**Answer: B**



**Watch Video Solution**

**252. During blood clotting, fibrin is produced by**

- A. Thrombokinase
- B. Prothrombin
- C. Liver
- D. Proteolysis.

**Answer: B**



**Watch Video Solution**

Column I (Tissues )

- A. Simple columnar
- B. Cardiac muscle
- C. Adipose tissue

**253.**

D. Hyaline cartilage

Column II (Location)

- P. Wall of heart
- q. bone joints
- r. Inner lining of stomach and intestine
- s. Below the skin in the abdomen, buttocks, thighs
- j. and breasts

A. a-r, b-p , c-s , d-q

B. a-r , b-t , c-q ,d-s

C. a-p , b-r , c-s , d-t

D. a-r , b-p , c-t ,d-s

**Answer: A**



**Watch Video Solution**

**254.** Match the terms listed under column-I with the structures which they occur given under column-II, choose the answer which gives the correct combination of alphabets of the two columns.

Column I (Structure)	Column II (Occurrence)
A Haversian canal	p. Kidney
B Dendrites	q. Cartilage
C Sarcolemma	r. Muscle
D. Chondrocytes	s. Nerve cells
	t. Bone

A. a-s, b-t, c-q, d-r

B. a-t, b-s, c-r, d-q

C. a-q, b-r, c-s, d-t

D. a-p, b-r, c-s, d-t

**Answer: B**



**Watch Video Solution**



**255.** Simple epithelium is made of

- A. Non-cellular layer of hyaluronic acid
- B. Actively dividing cells
- C. tightly arranged cells
- D. Loosely arranged cells

**Answer: D**



**Watch Video Solution**

**256.** Which cartilage is present in trachea , larynx and bronchi ?

- A. Fibrous
- B. Elastic
- C. Hyaline

D. Calcified.

**Answer: C**



[Watch Video Solution](#)

**257.** In man , the number of R.B.C. per cubic mm of blood is

- (a) 1 to 3 millions
- (b) 5 to 5.4 millions
- (c) Less than one million but more than 50 thousand
- (d) Less than 50 thousand

A. 4 million

B. 5 million

C. 6 million

D. 0 · 5 million.

**Answer: B**



[Watch Video Solution](#)

**258.** Goblet cells are

- A. Unicellular glands
- B. Multicellular glands
- C. Stratified epithelium
- D. Dead keratinised cells.

**Answer: A**



**Watch Video Solution**

**259.** Sebaceous glands are

- A. Apocrine
- B. Holocrine
- C. Mesocrine

D. Eccrine.

**Answer: B**



**Watch Video Solution**

**260.** Glial cells forming blood brain barrier are formed of

A. Ranvier cells

B. Schwann cells

C. Astrocytes

D. Oligodendroglial cells.

**Answer: C**



**Watch Video Solution**

**261.** Number of WBCs per  $mm^3$  of human blood is

A. 8000

B. 7000

C. 6500

D. 6000

**Answer: A**



[Watch Video Solution](#)

**262.** In the region of joining of two cardiac muscle cells is present

A. Ligament

B. Basement

C. Intercalated disc

D. Fibres.

**Answer: C**



[Watch Video Solution](#)

**263.** RBCs are nucleated in

- A. Man
- B. Rabbit
- C. Rat
- D. Frog.

**Answer: D**



**Watch Video Solution**

**264.** Which proteolytic enzyme induce lysis of fibrin during fibrinolysis ?

- A. Fibrinogen
- B. Plasmin
- C. Thrombin

D. VIII Platelet factor.

**Answer: B**



[Watch Video Solution](#)

**265.** Direction of nerve impulse is reversed in nerve with

- A. Axo-axonic
- B. Axo-dendritic
- C. Axo- axondendritic
- D. None of the above.

**Answer: A**



[Watch Video Solution](#)

**266.** Cartilage is

- A. Non- vascular
- B. Poorly vascular
- C. Highly vascular
- D. Irregularly vascular.

**Answer: A**

 [Watch Video Solution](#)

**267. What is sarcomere ?**

- A. Z - line to Z-line
- B. Two I - bonds
- C. Two A - bands
- D. Two surfaces of a Z-line.

**Answer: A**

 [Watch Video Solution](#)



**268.** Collagen and elastin are formed by

- A. Macrophages
- B. Fibroblasts
- C. Mast cells
- D. Chondrocytes .

**Answer: B**



**Watch Video Solution**

**269.** The rarest leukocyte of human blood is

- A. Basophil
- B. Monocyte
- C. Neutrophil

D. Eosinophil.

**Answer: A**



**Watch Video Solution**

**270.** Squamous epithelium occurs in inner lining of

- (a) Kidney
- (b) Pancreatic duct
- (c) Lung alveoli
- (d) Liver

A. Kidney

B. Pancreatic duct

C. Lung alveoli

D. Heart .

**Answer: C**



**Watch Video Solution**

271. Platelet plug is associated with

- A. Clot retraction
- B. Haemostasis
- C. Fibrin formation
- D. Homeostasis

**Answer: B**



[Watch Video Solution](#)

272. In nerve cells , proteins are synthesised in

- A. Cell body
- B. Axon
- C. Dendron

D. Synapses.

**Answer: A**



[Watch Video Solution](#)

**273.** Bilirubin and biliverdin are derived from

A. Globin

B. Haem

C. Iron

D. Fat.

**Answer: B**



[Watch Video Solution](#)

**274.** Protein required for coagulation of blood is

A. Haemoglobin

B. Globulin

C. Fibrinogen

D. Albumin.

**Answer: C**



**Watch Video Solution**

**275. Branched tubular gland is**

A. Salivary

B. Gastric

C. Sebaceous

D. Sweat .

**Answer: B**



**Watch Video Solution**

**276.** Which is not a component of areolar tissue?

- A. Macrophage
- B. Plasma cell
- C. Schwann cell
- D. Adipose cell.

**Answer: C**



**Watch Video Solution**

**277.** To prevent clotting, donor's blood is treated with

- A. Sodium glycocholate
- B. Sodium citrate
- C. Heparin

D. Sodium taurocholate .

**Answer: B**



[Watch Video Solution](#)

**278.** Blood proteins connected with antibodies are

A. Albumins

B.  $\beta$ - globulins

C. Gammaglobulins

D.  $\alpha$ - globulins .

**Answer: C**



[Watch Video Solution](#)

**279.** Ruptured blood cells are not trapped in

A. Liver

B. Spleen

C. Bone marrow

D. Both A and C.

**Answer: C**

 [Watch Video Solution](#)

**280.** Match the columns

Column I      Column II

- |                   |                          |
|-------------------|--------------------------|
| <i>a</i> Glycogen | <i>p</i> Hormone         |
| <i>b</i> Globulin | <i>q</i> Binocatalyst    |
| <i>c</i> Steroids | <i>r</i> Antibody        |
| <i>d</i> Thrombin | <i>s</i> Storage Product |

A. a-r, b-q, c-s, d-p

B. a-s, b-q, c-p, d-r

C. a-q, b-s, c-r, d-p

D. a-s, b-r, c-p, d-q



**Answer: D**



[Watch Video Solution](#)

**281.** Characteristic of epithelial tissues is

- (a) Never produce glands
- (b) Cells can undergo rapid divisions
- (c) Abundant vascularization
- (d) Large intercellular spaces

- A. Never produce glands
- B. Cells can undergo rapid divisions
- C. Abundant vascularisation
- D. Large intercellular spaces .

**Answer: B**



[Watch Video Solution](#)

**282.** Cell body of neuron is called

- A. Nissl body
- B. Neurolemma
- C. Oligodendrocyte
- D. Perikaryon.

**Answer: D**



**Watch Video Solution**

**283.** Process of formation of blood is

- A. Haemolysis
- B. Plasmolysis
- C. Haemopoiesis
- D. Haemoneogenesis.

**Answer: C**



**Watch Video Solution**

**284.** Bones are mainly formed of

- A. Calcium and Magnesium
- B. Calcium and Phosphorus
- C. Calcium and Sulphur
- D. Calcium and Iron.

**Answer: B**



**Watch Video Solution**

**285.** Which of the following cells do not form layer and remain structurally separate ?

A. Nerve cells

B. Gland cells

C. Muscle cells

D. Epithelial cells.

**Answer: A**



**Watch Video Solution**

**286.** During an injury nasal septum gets damaged and for its recovery which cartilage is preferred ?

A. Fibrous cartilage

B. Elastic cartilage

C. Hyaline cartilage

D. Calcified cartilage .

**Answer: C**

 [Watch Video Solution](#)

**287.** Emulsification of fat is carried out by

- A. Osteoclasts
- B. Osteoprogenitors
- C. Osteoblasts
- D. None of the above.

**Answer: A**

 [Watch Video Solution](#)

**288.** Hyaline cartilage does not have :

- A. Cells
- B. Lacunae
- C. Fibres

D. Blood capillaries .

**Answer: C**



**Watch Video Solution**

**289.** Layer of columnar cells with uneven appearance and lining trachea is

A. Brush border epithelium

B. Pseudostratified epithelium

C. Stratified epithelium

D. Ciliated epithelium.

**Answer: B**



**Watch Video Solution**

**290.** The outer covering of non- myelinated neurons in brain is

A. Neurilemma

B. Axolemma

C. Oolemma

D. Sarcolemma.

**Answer: B**

 [Watch Video Solution](#)

**291.** Which one is connected with connective tissue alone ?

A. Blood , bone and skin

B. Blood , bone and epidermis

C. Bone , tendon and muscle

D. Cartilage , adipose tissue and blood.

**Answer: D**

 [Watch Video Solution](#)

**292.** Match the columns

	Column I		Column II
(i)	Chondrocyte	(a)	Bone forming
(ii)	Osteocyte	(b)	Cartilage forming
(iii)	Osteoblasts	(c)	Bone maintaing
(iv)	Osteoclast	(d)	Bone eating

A. (i) - (a) , (ii) - (b) , (iii) - (c) , (iv) - (d)

B. (i) - (b) , (ii) - (d) , (iii) - (c) , (iv) - (a)

C. (i) - (b) , (ii) - (c) , (iii) - (a) , (iv) - (d)

D. (i) - (d) , (ii) - ( b) , (iii) - (a) , (iv) - (c).

**Answer: C**



**Watch Video Solution**

**293.** Structure which joins two bones at the joints is formed of

A. Collagen fibres



B. Elastic fibres

C. Chondrocytes

D. Fibroblasts.

**Answer: B**



**Watch Video Solution**

**294.** A bipolar neuron has

A. Two axons and two dendrons

B. One axon and one dendron

C. Two axon and one dendron

D. One axon and two dendrons.

**Answer: B**



**Watch Video Solution**

**295.** Most abundant granulocytes of human blood is

- A. Neutrophil
- B. Eosinophil
- C. Basophil
- D. Monocyte.

**Answer: A**



**Watch Video Solution**

**296.** In which bones shall have Haversian system

- A. Panther
- B. Python
- C. Pigeon
- D. Pipe Fish.

**Answer: A**



[Watch Video Solution](#)

**297.** Niss's granules are absent in

A. Neuron

B. Axon

C. Cyton

D. Dendrite.

**Answer: B**



[Watch Video Solution](#)

**298.** Granules contain histamine in

A. Neutrophils

B. Eosinophils

C. Acidophils

D. Basophils.

**Answer: D**



[Watch Video Solution](#)

**299.** Serum is

A. Plasma of blood

B. Plasma minus gammaglobins

C. Plasma minus fibrinogen

D. Plasma minus  $Ca^{2+}$ .

**Answer: C**



[Watch Video Solution](#)

**300.** In medullated nerve fibre , nodes of Ranvier represent areas

- A. Swellings on axon
- B. Myelin sheath touches axon
- C. Swelling on cyton
- D. Depressions found on cyton.

**Answer: B**



**Watch Video Solution**

**301.** Largest smooth muscles occur in

- A. Urethra
- B. Uterus of pregnant woman
- C. Leg
- D. Thigh.

**Answer: B**



[Watch Video Solution](#)

**302.** Functional unit of skeletal muscle is called

- A. Motor unit
- B. Sarcoplasmic reticulum
- C. Sarcomere
- D. Myosin cross bridge.

**Answer: C**



[Watch Video Solution](#)

**303.** Lining of trachea is made up of

- A. Stratified epithelium

- B. Simple squamous epithelium
- C. Stratified cuboidal epithelium
- D. Pseudostratified epithelium.

**Answer: D**



**Watch Video Solution**

**304. White fibrous cartilage occurs in**

- A. Larynx
- B. External ear
- C. Trachea
- D. Intervertebral discs.

**Answer: D**



**Watch Video Solution**

**305.** Epithelium lining bronchiole is

- A. Columnar and cuboidal
- B. Pseudostratified and sensory
- C. Squamous and sensory
- D. Pseudostratified and columnar.

**Answer: A**



**Watch Video Solution**

**306.** Collagen is

- A. Lipid
- B. Globular protein
- C. Fibrous protein
- D. Carbohydrate.



**Answer: C**



[Watch Video Solution](#)

**307.** Assertion. RBC production is regulated by kidney.

Reason. Erythropoietin reaches red bone marrow, induces stem cell mitosis and speeds up development of RBC

- A. if both are true with reason being correct explanation
- B. both true but reason not correct explanation
- C. assertion true but reason wrong
- D. and both wrong .

**Answer: A**



[Watch Video Solution](#)

**308.** Assertion . Histamine is involved in allergic and inflammatory reactions . Reason. Histamine is vasodilator

- A. if both are true with reason being correct explanation
- B. both true but reason not correct explanation
- C. assertion true but reason wrong
- D. and both wrong .

**Answer: A**



[Watch Video Solution](#)

**309.** Asserion : Mast cells in the human body release excessive amounts of inflammatory chemicals which cause allergic reactions.

Reason : Allergens in the environment on reaching human body stimulate mast cell in certain individuals.

- A. if both are true with reason being correct explanation

B. both true but reason not correct explanation

C. assertion true but reason wrong

D. and both wrong .

**Answer: C**



[Watch Video Solution](#)

**310.** Which one of the following is a matching pair of a certain body feature and its value/count in a normal human adult

A. Urea : 5 - 10 gm/100 ml of blood

B. Blood sugar fasting : 70 - 100 mg/100 ml

C. Total blood volume : 3 - 4 litres

D. ESR in wintrobe method : 9-15 m in males and 20 - 34 m in females.

**Answer: B**



[Watch Video Solution](#)

**311.** Match the types of WBC listed under column *I* with the shape of nucleus given under column *II* and select the correct option from codes given below

Column I		Column II
A. Neutrophils	(i)	Kidney-shaped
B. Eosinophils	(ii)	S-shaped
C. Basophils	(iii)	3 to 5 lobes
D. Monocyte	(iv)	2 lobes
	(v)	Disc-shaped

A.  $a = r, b = t, c = p, d = q$

B.  $a = t, b = r, c = q, d = s$

C.  $a = q, b = p, c = t, d = r$

D.  $a = r, b = s, c = q, d = p.$

**Answer: D**



**Watch Video Solution**

**312.** In which of the following tissues is the matrix not product of synthesis of its cells?

- A. Vascular tissue
- B. Osseus tissue
- C. Loose connective tissue
- D. Adipose tissue.

**Answer: A**



[Watch Video Solution](#)

**313.** Which one of the following contains the largest quantity of extracellular material ?

- A. Striated muscle
- B. Areolar tissue
- C. Stratified epithelium

D. Myelinated nerve fibres.

**Answer: B**



**Watch Video Solution**

**314.** Cells of germinal epithelium are

A. Cuboidal

B. Columnar

C. Squamous

D. Ciliated.

**Answer: A**



**Watch Video Solution**

**315.** Antibodies are formed by

- A. Plasma cells
- B. Histiocytes
- C. Mast cells
- D. None of the above.

**Answer: A**

 [Watch Video Solution](#)

**316.** What used to be described as Nissl's granules in a nerve cell are now identified as

- A. Cell metabolites
- B. Fat granules
- C. Ribosomes
- D. Mitrochondria.

**Answer: C**

 [Watch Video Solution](#)

**317.** Epithelium covering the tongue is

- A. Pseudostratified
- B. Squamous keratinised
- C. Squamous non-keratinised
- D. Simple cuboidal.

**Answer: C**

 [Watch Video Solution](#)

**318.** Intervertebral discs are composed of

- A. Hyaline
- B. Fibrous
- C. Elastic



D. Calcified .

**Answer: B**



[Watch Video Solution](#)

**319.** Neuroglia cells are

- A. Secretory cells
- B. Sensory cells
- C. Non-sensory supporting cells
- D. Sensory and supporting cells.

**Answer: C**



[Watch Video Solution](#)

**320.** Normal level of haemoglobin per 100 ml of blood in a woman is

A. 18 g

B. 14 g

C. 12 g

D. 10g

**Answer: B**



[Watch Video Solution](#)

**321.** How do the basophils help in body defence?

A. Phagocytosis of pathogens

B. Cell mediated and antibody immunity

C. Inhibit allergic reaction

D. Heparin secretion for preventing thrombosis.

**Answer: D**



[Watch Video Solution](#)

**322.** Pancreas is

- A. Exocrine
- B. Endocrine
- C. Both A and B
- D. None of the above.

**Answer: C**



**Watch Video Solution**

**323.** The tissue that forms the inner lining of blood vessels is

- A. Epithelium
- B. Connective
- C. Muscle

D. Nervous .

**Answer: A**



**Watch Video Solution**

**324.** Both erythrocytes and leucocytes are formed in

A. Thymus

B. Bone marrow

C. Arterial walls

D. Lymph nodes.

**Answer: B**



**Watch Video Solution**

**325.** In a neuron , Schwann cells occur in association with

A. Axon

B. Soma

C. Dendrite

D. Axon hillock .

**Answer: A**



**Watch Video Solution**

**326.** \_\_\_\_ acts as a shock absorber to cushion when tibia and femur came together

A. Ligament

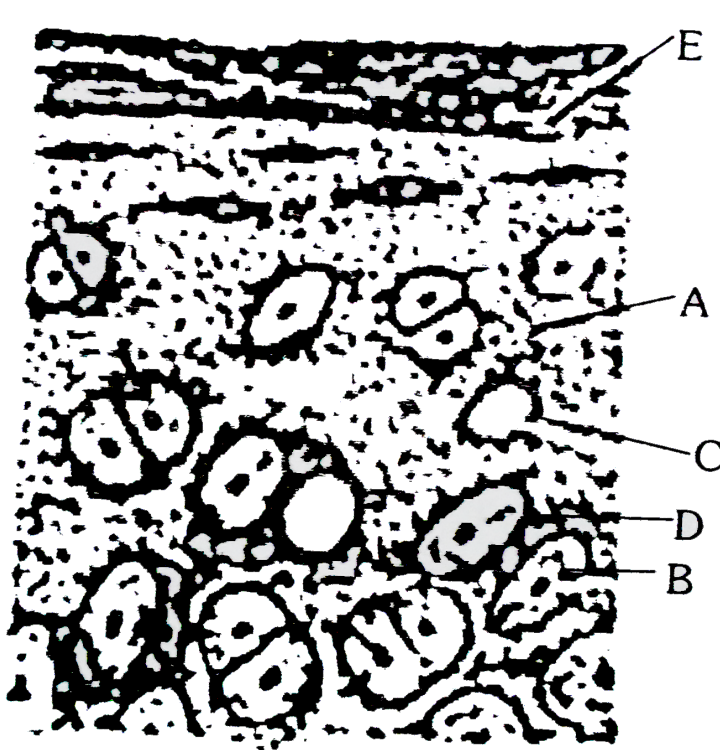
B. Cartilage

C. Tendon

D. Disc.

**Answer: B**

327. In the diagram of section of Hyaline cartilage, the different parts have been indicated by alphabets, choose the answer in which these alphabets correctly match with parts they indicate



A. a- chondrin, b - chondrocyte , c - lacuna , d - capsular matrix , e -  
perichondrium

B. a- chondrin , b - lacuna , c - chondrocyte , d- capsular matrix, e - perichondrium

C. a- perichodrium , b - chondrocyte , c - lacuna , d - capsular matrix , e - chondrin

D. a - capsular matrix , b - chondrocyte , c - lacuna , d - perichondrium , e - chondrin.

**Answer: A**



**Watch Video Solution**

**328.** Volkman's canals occur in

A. Cartilage

B. Liver

C. Bone

D. Internal ear.

**Answer: C**



**Watch Video Solution**

**329.** Which is not the property of yellow fibres

- A. Contain elastin
- B. Fewer in number
- C. Straight and branched
- D. Provide toughness and strength

**Answer: D**



**Watch Video Solution**

**330.** Which one has abundant white fibres

- A. Tendon



B. Ligament

C. Cartilage

D. Bone.

**Answer: A**



[Watch Video Solution](#)

**331.** The type of epithelial cells which line the inner surface of fallopian tubes, bronchioles and small bronchi are known as:

A. Squamous columnar epithelium

B. Ciliated columnar epithelium

C. Stratified and branched

D. Cubical epithelium .

**Answer: B**



[Watch Video Solution](#)

**332.** Major constituent of connective tissue is

- A. Collagen
- B. Carbohydrate
- C. Lipid
- D. Cholesterol.

**Answer: A**



**Watch Video Solution**

**333.** Collagen fibers are secreted by

- A. Histiocytes
- B. Fibroblasts
- C. Mast cells
- D. Macrophages.

**Answer: B**



**Watch Video Solution**

**334.** Thousand of years old mummies are still in condition as they were before due to non- destruction of

- A. Collagen fibres
- B. White elastin fibres
- C. Yellow elastin fibres
- D. Veins .

**Answer: C**



**Watch Video Solution**

**335.** Which identifies striated muscles ?

- A. Cylindrical , striped and branched
- B. Cylindrical , striped and uninucleate
- C. Spindle , unbranched and uninucleate
- D. Cylindrical , striped and unbranched .

**Answer: D**

 [Watch Video Solution](#)

**336.** Which of the following is not syncytial ?

- A. Skeletal muscles
- B. Tongue muscles
- C. Abdominal muscles
- D. Smooth muscles.

**Answer: D**

 [Watch Video Solution](#)

**337.** Which is true of contractile tissue of sphincter ?

1. Mesodermal 2. Contain stretch receptors

3. Rhythmicity 4 . Indefatigible

A. All the four

B. Only 1, 2 and 3

C. Only 1, 2 and 4

D. Only 1, 3 and 4.

**Answer: B**



**Watch Video Solution**

**338.** Choose the odd pair

A. Areolar connective tissue - Collagen

B. Epithelium - Keratin

C. Muscle fibre - Actin

D. Neuron - Melanin.

**Answer: D**



**Watch Video Solution**

**339.** In vertebrates , laying down of bone is often preceded by

A. Cartilage

B. Chitin

C. Platelets

D. Starch.

**Answer: A**



**Watch Video Solution**

**340.** Which is exclusively compound saccular ?

- A. Salivary
- B. Mammary
- C. Sebaceous
- D. Pancreas.

**Answer: B**



**Watch Video Solution**

**341.** Condition of having a number of nuclei in a muscle fibre is

- A. Polykaryon
- B. Coenocytic
- C. Syncytial
- D. Endoreduplication .

**Answer: C**



**Watch Video Solution**

**342.** What should be given if an anaemic person has large immature nucleated erythrocytes ?

- A. Iron
- B. Thiamine
- C. Folic acid and cobalamine
- D. Riboflavin.

**Answer: C**



**Watch Video Solution**

**343.** Areolar connective tissue joins



A. Integument with muscles

B. Bones with muscles

C. Bone with bone

D. Fat body with muscles.

**Answer: A**

 [Watch Video Solution](#)

**344. Match the columns**

Column I	Column II
<i>a</i> Squamous	1. Intestinal glands
<i>b</i> Cuboidal	2. Trachea
<i>c</i> Columnar	3. Ovary
<i>d</i> Ciliated	4. Blood vessels
<i>e</i> Pseudostratified	5. Bronchioles

A. a - 5 , b - 4 , c- 2 , d-1 , e-3

B. a - 4 , b - 3 , c-1 , d-5 , e-2

C. a - 4 , b-3 , c-1 , d-2 , e - 5

D. a- 4 , b-5 , c-1 , d-2 , e-3

**Answer: B**



**Watch Video Solution**

**345.** Match the types of WBC listed under column *I* with the shape of nucleus given under column *II* and select the correct option from codes given below

Column I		Column II
A. Neutrophils	(i)	Kidney-shaped
B. Eosinophils	(ii)	S-shaped
C. Basophils	(iii)	3 to 5 lobes
D. Monocyte	(iv)	2 lobes
	(v)	Disc-shaped

A. a-4 , b-1 , c- 3 , d- 5 , e-2

B. a - 2 , b- 5 , c-1 , d- 4 , e - 3

C. a - 4 , b - 5 , c -2 , d-1 , e- 3

D. a - 2 , b - 4 , c - 5 , d- 3 , e-1

**Answer: C**



**Watch Video Solution**

**346.** Which of the following is a transparent tissue ?

- A. Tendon
- B. Ligament
- C. Fibrous cartilage
- D. Hyaline cartilage.

**Answer: D**



**Watch Video Solution**

**347.** Anticoagulant hirudin is found in

- A. Scorpion

B. Snake

C. Leech

D. Lizard.

**Answer: C**



**Watch Video Solution**

**348.** Ringer soluion contains

A.  $Na^+$  and  $K^+$  ions

B.  $Na^+ + Cl^-$  ions

C.  $K^+ + Cl^-$  ions

D.  $Na^+ + K^+ + Cl^-$  ions.

**Answer: A**



**Watch Video Solution**

**349.** In heart , there are conducting cardiac muscles which consist of fibres called

- A. Myonemes
- B. Purkinje fibres
- C. Telodendria
- D. Columnae carnaeae.

**Answer: B**



**Watch Video Solution**

**350.** Strong, dense inextensible connective tissue with parallel collagen fibres that connect a muscle with bone is

- A. Elastic tissue
- B. Yellow tissue
- C. Ligament

D. Tendon.

**Answer: D**



**Watch Video Solution**

**351.** Which one is wrongly matched

- A. Squamous epithelium - Skin of Frog
- B. Columnar epithelium - Peritoneum of body cavity
- C. Ciliated epithelium - Bronchioles
- D. Stratified cuboidal epithelium - Oesophagus.

**Answer: B**



**Watch Video Solution**

**352.** What is correct

A. Neuron = Cyton + Dendrite + Axon + Synapse

B. Lymph = Plasma + RBC + WBC

C. Blood = Plasma + RBC + WBC + Blood platelets

D. Plasma = Blood - Lymphocytes.

**Answer: C**

 [Watch Video Solution](#)

**353.** Non-keratinised stratified epithelium occurs in

A. Vagina and cervix

B. Body cavity and anal canal

C. Vagina , cervix and buccal cavity

D. Vagina , cervix , buccal cavity and anal canal .

**Answer: D**

 [Watch Video Solution](#)

**354.** Alveoli of lungs are lined by

- A. Squamous epithelium
- B. Columnar epithelium
- C. Cuboidal epithelium
- D. Stratified cuboidal epithelium.

**Answer: A**



**Watch Video Solution**

**355.** Myelin sheath is formed from

- A. Nerve cells
- B. Glial cells
- C. Schwann cells



D. None of the above.

**Answer: C**



**Watch Video Solution**

**356.** Non-cellular layer that connects epithelium to connective tissue is

A. Dermis

B. Epidermis

C. Basement membrane

D. None of the above.

**Answer: C**



**Watch Video Solution**

**357.** Ligament is mainly made up of

A. Collagen

B. Elastin

C. Reticulin

D. Myosin.

**Answer: B**



[Watch Video Solution](#)

**358.** Three lobed nuclei occur in

A. Monocytes

B. Eosinophils

C. Neutrophils

D. Basophils.

**Answer: D**



[Watch Video Solution](#)

**359.** Heparin is secreted by

- A. Oxyntic cells
- B. Mast cells
- C. Goblet cells
- D. All the above.

**Answer: B**



**Watch Video Solution**

**360.** Blood clotting vitamin is

- A. A
- B.  $B_6$
- C.  $B_{12}$

D. K

**Answer: D**



**Watch Video Solution**

**361.** Which of the following is not phagocytic ?

A. Monocyte

B. Lymphocyte/Basophil

C. Neutrophil

D. Histiocyte.

**Answer: B**



**Watch Video Solution**

**362.** Cell junctions will be frequent in

- A. Thrombocytes
- B. Tendon
- C. Hyaline cartilage
- D. Ciliated epithelium.

**Answer: D**

 [Watch Video Solution](#)

**363.** Which will not coagulate

- A. Blood serum
- B. Blood plasma
- C. Lymph
- D. Whole blood.

**Answer: A**

 [Watch Video Solution](#)

**364.** Which one of the following pairs of structures distinguishes a nerve cell from other types of cell ?

- A. Vacuole and fibres
- B. Nucleus and mitochondria
- C. Perikaryon and dendrites
- D. Flagellum and medullary sheath.

**Answer: C**



**Watch Video Solution**

**365.** Match the columns and find correct combination :

Column I

Column II

- |                         |                     |
|-------------------------|---------------------|
| (a) Squamous epithelium | 1. Below skin       |
| (b) Hyaline cartilage   | 2. Bowman's capsule |
| (c) Adipose tissue      | 3. Wall of stomach  |
| (d) Smooth muscles      | 4. Trachea          |
|                         | 5. Duct of glands   |

A. (a) - 5 , (b) - 4 , (c) - 1 , (d) - 3

B. (a) - 5 , (b) - 1 , (c) - 4 , (d) - 2

C. (a) - 2 , (b) - 4 , (c) - 1 , (d) - 3

D. (a) - 2 , (b) - 1 , (c) - 4 , (d) - 3

**Answer: C**



**Watch Video Solution**

**366.** Myelin sheath is not found around nerve fibres of

A. Fishes

B. Egg laying mammals

C. Frog

D. Cyclostomates.

**Answer: D**



**Watch Video Solution**

**367.** Bone marrow does not occur in

- A. Reptiles
- B. Birds
- C. Amphibians
- D. Fishes .

**Answer: B**



**Watch Video Solution**

**368.** Non -excitable variously shaped cells found between neurons are

- A. Glial cells
- B. Schwann cells
- C. Dendrites



D. Nissl bodies .

**Answer: A**



**Watch Video Solution**

**369.** An example of embryonic connective tissue is

A. Wolman's jelly

B. Wharton's jelly

C. Wright's jelly

D. None of the above .

**Answer: B**



**Watch Video Solution**

**370.** Rupture of urinary bladder is prevented by

- A. Transitional epithelium
- B. Pseudostratified epithelium
- C. Stratified cuboidal epithelium
- D. Stratified columnar epithelium.

**Answer: A**

 [Watch Video Solution](#)

**371.** Cell junction facilitating cell to cell communication is

- A. Tight junction
- B. Adhering junction
- C. Gap junction
- D. Desmosomes

**Answer: C**

 [Watch Video Solution](#)

**372.** Structurally what are olfactory nerve cells ?

- A. Unipolar neurons
- B. Multipolar neurons
- C. Bipolar neurons
- D. Neurochemically specialised neurons.

**Answer: C**



**Watch Video Solution**

**373.** Fluid with variable amount of materials is

- A. Urine
- B. Cerebrospinal fluid
- C. Blood

D. Lymph.

**Answer: D**



**Watch Video Solution**

**374.** Type of tissue that forms glands is

A. Epithelial

B. Muscular

C. Squamous

D. Cuboidal.

**Answer: A**



**Watch Video Solution**

**375.** Which is not a cellular element of blood ?

A. T-cell

B. B-cell

C. Plasma

D. Monocyte.

**Answer: C**



[Watch Video Solution](#)

**376.** Carotene pigment occurs in the cells of

A. Dermis

B. Epidermis

C. Adipose tissue

D. Both B and C.

**Answer: B**



[Watch Video Solution](#)

**377.** Debove's membrane is layer of

- A. Epithelial tissue
- B. Muscular tissue
- C. Nervous tissue
- D. Connective tissue.

**Answer: D**



**Watch Video Solution**

**378.** Lining of intestine of man is

- A. Ciliated
- B. Brush bordered
- C. Keratinised

D. Squamous.

**Answer: B**



**Watch Video Solution**

**379.** Which part of neuron is covered by fatty sheath ?

A. Axon

B. Cyton

C. Dendrite

D. Node of Ranvier.

**Answer: A**



**Watch Video Solution**

**380.** Nerve cells do not divide because they do not have

- A. Nucleus
- B. Golgi body
- C. Mitochondria
- D. Centrosome.

**Answer: D**

 [Watch Video Solution](#)

**381.** Which leucocytes release histamine , serotonin and heparin ?

- A. Eosinophils
- B. Basophils
- C. Monocytes
- D. Neutrophils.

**Answer: B**

 [Watch Video Solution](#)



**382.** The most active phagocytic white blood cells are

- A. Lymphocytes and macrophages
- B. Neutrophils and eosinophils
- C. Eosinophils and lymphocytes
- D. Neutrophils and monocytes.

**Answer: B**



**Watch Video Solution**

**383.** Which of the following prevents the conversion of prothrombin in an undamaged blood vessel ?

- A. Thromboplastin
- B. Fibrinogen
- C. Heparin

D. Calcium.

**Answer: C**



**Watch Video Solution**

**384.** Brush border of small intestine cells is formed of

A. Microvilli

B. Cilia

C. Villi

D. Circular folds.

**Answer: A**



**Watch Video Solution**

**385.** Macrophages are modified

A. Eosinophils

B. Neutrophils

C. Monocytes

D. Basophils.

**Answer: C**



[Watch Video Solution](#)

**386.** Which one is connective tissue ?

A. Neuron

B. Nephrons

C. Islet of Langerhans

D. Blood.

**Answer: D**



[Watch Video Solution](#)

**387.** Cell junctions called tight , adhering and gap junctions are found in

- A. Neural tissue
- B. Muscular tissue
- C. Connective tissue
- D. Epithelial tissue.

**Answer: D**



**Watch Video Solution**

**388.** The supportive structure of our pinna is also found in

- A. Tip of nose
- B. Ear ossicles
- C. Vertebrae

D. Nails .

**Answer: A**



**Watch Video Solution**

**389.** DNA is absent in

A. Mature spermatozoan

B. Mature RBC

C. Hair root

D. Enucleated ovum.

**Answer: B**



**Watch Video Solution**

**390.** Mature mammalian RBC is unusual because it

A. Exhibits diapedesis

B. Has no nucleus

C. Is colourless

D. Can change its shape.

**Answer: B**



**Watch Video Solution**

**391.** In normal healthy individual percentage of adult and foetal haemoglobin , HbA: HbA<sub>2</sub>: HbF is

A. 96 : 2 : 2

B. 50 : 45 : 5

C. 45 : 45 : 10

D. 80 : 10 : 10.

**Answer: A**

 [Watch Video Solution](#)

**392.** Siderocyte is RBC having

- A. Herring bodies
- B. Russel bodies
- C. Pappenheimer bodies
- D. Schuffner's dots.

**Answer: C**

 [Watch Video Solution](#)

**393.** Myelin of the nerve fibres of the central nervous system is produced and maintained by

- A. Microglia
- B. Schwann cells

C. Astrocytes

D. Oligodendrocytes.

**Answer: D**

 [Watch Video Solution](#)

**394.** Which is the correct sequence of arrangement of types of WBC in decreasing order term of number per  $mm^3$  of human blood?

A. Eosinophils > basophils > neutrophils

B. Neutrophils > eosinophils > basophils

C. Basophils > eosinophils > neutrophils

D. Eosinophils > neutrophils > basophils.

**Answer: B**

 [Watch Video Solution](#)



**395.** Match list I with II and find the correct option

List I

List II

(Epithelial tissue)

(Location)

1. Cuboidal

(A) Epidermis of skin

2. Cililated

(B) Inner lining of blood vessel

3. Columnar

(C) Inner surface of gall bladder

4. squamous

(D) Inner lining of

5. Keratinized  
squamous

(E) Linig of pancreatic duct

A. 1-e , 2-d , 3-c , 4-b , 5-a

B. 1-e , 2-d , 3 - b , 4 -c , 5-a

C. 1- c , 2-d , 3-e , 4-b , 5-a

D. 1- c , 2-e , 3 -d , 4 -a , 5 -b

**Answer: A**



**Watch Video Solution**

**396.** Schwann cells are associated with

- A. Skeletal muscle
- B. Connective tissue
- C. Nervous tissue
- D. Cardiac muscle

**Answer: C**

 [Watch Video Solution](#)

**397.** Epimysium perimysium and endomysium occur in

- A. Blood vessel
- B. Striated muscle
- C. Nerve
- D. Uterus.

**Answer: B**

 [Watch Video Solution](#)

**398.** The area where medullary sheath is absent in the nerve fibre is

- A. Nissal granules
- B. Schwann cells
- C. Node of Ranvier
- D. Schwann node.

**Answer: C**



**Watch Video Solution**

**399.** Vitamin K is required for

- A. Synthesis of prothrombin
- B. Change of prothrombin to thrombin
- C. Reaction fo calcium with prothrombin

D. All the above.

**Answer: A**



**Watch Video Solution**

**400.** Which of the following is not a connective tissue

A. Blood

B. Bone

C. Lymph

D. Nerve.

**Answer: D**



**Watch Video Solution**

**401.** Skin is

- A. Cuboidal epithelium
- B. Stratified epithelium
- C. Columnar epithelium
- D. Pseudostratified epithelium.

**Answer: D**

 [Watch Video Solution](#)

**402.** Match the animals listed in column I to blood listed in column II

Column I	Column II
<i>a</i> Man	<i>p</i> Plasma and cells are colourless
<i>b</i> Earthworm	<i>q</i> Plasma colourless and nucleated RBC
<i>c</i> Cockroach	<i>r</i> Plasma colourless and enucleated RBC
<i>d</i> Frog	<i>s</i> Plasma red and nucleated colourless RBC
	<i>t</i> Plasma and RBC have haemoglobin.

A. a-r , b-s , c-p , d-q

B. a-s , b-t , c-r , d-q

C. a- p , b-s , c-q , d- r

D. a-t , b-r , c-p , d-s.

**Answer: A**



**Watch Video Solution**

**403.** Stereocilia occur in

- A. Columnar epithelium of stomach
- B. Pseudostratified columnar epithelium of epididymis
- C. Pseudostratified columnar epithelium of trachea
- D. Stratified columnar epithelium of pharynx.

**Answer: B**



**Watch Video Solution**

**404.** In the clotting mechanism pathway, thrombin activates the factors

A. VIII , X ,V

B. XI , VIII , X

C. XI , IX , X

D. XI , VIII , V.

**Answer: D**



**Watch Video Solution**

**405.** Originating from bone marrow , circulating in blood for 1-2 days and passing into connective tissue as macrophages are

A. Monocytes

B. Basophils

C. Eosinophils

D. Lymphocytes.

**Answer: A**

 [Watch Video Solution](#)

**406.** The matrix of bone and cartilage can be distinguished by the presence of

- A. Lacuna
- B. Chromatophores
- C. Haversian canals
- D. Adipose cells.

**Answer: C**

 [Watch Video Solution](#)

**407.** Multi-lobed nucleus and granular cytoplasm are characteristics of which of the following types of WBCs ?



A. Neutrophils

B. Monocytes

C. Lymphocytes

D. Eosinophils.

**Answer: A**



[Watch Video Solution](#)

**408.** Which of the following blood cells help in blood coagulation

A. RBCs

B. Lymphocytes

C. Thrombocytes

D. Basophils.

**Answer: C**



[Watch Video Solution](#)

**409.** The outer covering of cartilage is called

- A. Peritoneum
- B. Periosteum
- C. Endosteum
- D. Perichondrium.

**Answer: D**



**Watch Video Solution**

**410.** The blood does not clot inside the body because of

- A. Oxygenation of blood
- B. Absence of fibrinogen in blood
- C. Movement of blood

D. Heparin in blood .

**Answer: D**



[Watch Video Solution](#)

**411.** Red cell count is carried out by

- A. Haemocytometer
- B. Haemoglobinometer
- C. Sphygmomanometer
- D. Electrocardiogram.

**Answer: A**



[Watch Video Solution](#)

**412.** Fibroblasts, macrophages and mast cells are present in

- A. Cartilage tissue
- B. Areolar tissue
- C. Adipose tissue
- D. Glandular epithelium

**Answer: B**

 [Watch Video Solution](#)

**413.** Find out the wrong match

- A. Eosinphils - allergic response
- B. Basophils - secrete histamine and serotonin
- C. Monocytes - secrete heparin
- D. Lymphocytes - immune response

**Answer: C**

 [Watch Video Solution](#)

**414.** Which of these is not found in connective tissue

- A. Collagen fibres
- B. Basement membrane
- C. Hyaluronic acid
- D. Fluid.

**Answer: B**



**Watch Video Solution**

**415.** The study of tissues is known as

- A. Physiology
- B. Ecology
- C. Histology

D. Anatomy.

**Answer: C**



**Watch Video Solution**

**416.** Which type of epithelium is involved in a function to move particles or mucus in direction ?

- A. Squamous epithelium
- B. Cuboidal epithelium
- C. Columnar epithelium
- D. Ciliated epithelium.

**Answer: D**



**Watch Video Solution**

**417.** The kind of epithelium which forms inner walls of blood vessels is

- (a) cuboidal epithelium
- (b) columnar epithelium
- (c) ciliated columnar epithelium
- (d) squamous epithelium

- A. Columnar epithelium
- B. Ciliated columnar epithelium
- C. Squamous epithelium
- D. Cuboidal epithelium .

**Answer: C**



**Watch Video Solution**

**418.** Cartilage is a type of

- A. Connective tissue

B. Epithelial tissue

C. Skeletal tissue

D. Muscular tissue.

**Answer: C**



**Watch Video Solution**

**419.** The columnar epithelium is found in

A. Trachea

B. Stomach

C. Lungs

D. Uterus.

**Answer: B**



**Watch Video Solution**



**420.** They are phagocytic in nature

- A. Neutrophil, monocyte and basophil
- B. Neutrophil , monocyte and macrophage
- C. Neutrophil , basophil and macrophage
- D. Acidophil, basophil and lymphocyte.

**Answer: B**



**Watch Video Solution**

**421.** Which one of the following human cells does not contain mitochondria ?

- A. Nerve cells
- B. Red blood cell
- C. White blood cell
- D. Liver cell.

**Answer: B**



[Watch Video Solution](#)

**422.** WBC is called true cell because of

- A. Presence of nucleus
- B. Phagocytosis
- C. Polymorphism
- D. None of the above.

**Answer: A**



[Watch Video Solution](#)

**423.** Cardiac muscle occurs in

- A. Epicardium

B. Endocardium

C. Myocardium

D. All the above.

**Answer: C**



[Watch Video Solution](#)

**424.** Which is most abundant in the body

A. Nervous tissue

B. Muscle tissue

C. Epithelial tissue

D. Connective tissue.

**Answer: D**



[Watch Video Solution](#)

425. Muscles contains a red coloured oxygen storing pigment called : —

- A. Haemoglobin
- B. Myoglobin
- C. Erythrocruurin
- D. Haemolymph.

**Answer: B**



[Watch Video Solution](#)

426. Major protein in thick filaments of skeletal muscle fibre is

- A. Myosin
- B. Actin
- C. Tropomyosin
- D. Troponin.

**Answer: A**



[Watch Video Solution](#)

**427.** The cells involved in inflammatory reactions are

- A. Basophils
- B. Eosinophils
- C. Monocytes
- D. Neutrophils.

**Answer: A**



[Watch Video Solution](#)

**428.** Which of the following statements about the mechanism of muscle contraction are correct ?

- (i) Acetylcholine is released when the neural signal reaches the motor end

plate.

(ii) Muscle contraction is initiated by a signal sent by CNS via sensory neuron.

(iii) During muscle contraction, isotropic band gets elongated

(iv) Repeated activation of the muscles can lead to lactic acid accumulation.

A. *i* and iv

B. *i* and iii

C. ii and iii

D. *i* , ii and iii

**Answer: A**



**Watch Video Solution**

**429.** The ciliated columnar epithelial cells in humans are known to occur in

(a) Fallopian tubes and urethra

(b) Eustachian tube and stomach lining

(c) Bronchioles and Fallopian tubes

(d) Bile duct and oesophagus

A. Bile duct and oesophagus

B. Eustachian tube and stomach lining

C. Fallopian tubes and bronchioles

D. Fallopian tubes and urethra.

**Answer: C**



**Watch Video Solution**

**430.** The type of muscle present in our

A. Heart are involuntary and unstriated smooth muscles

B. Intestine are striated and involuntary

C. Thigh are striated and voluntary

D. Upper arm are smooth muscle fibres fusiform in shape.

**Answer: C**



**Watch Video Solution**

**431. Serum is**

- A. Blood without fibrinogen
- B. Blood without corpuscles and fibrinogen
- C. Lymph
- D. Lymph without corpuscles .

**Answer: B**



**Watch Video Solution**

**432. Tendon and Ligaments**



- A. Loose connective tissue
- B. Special connective tissue
- C. Dense irregular connective tissue
- D. Dense regular connective cell.

**Answer: D**

 [Watch Video Solution](#)

**433.** Which is not a neuroglial cell

- A. Oligodendrocyte
- B. Microglia
- C. Astrocyte
- D. Chondrocyte.

**Answer: D**

 [Watch Video Solution](#)

**434.** The supportive skeletal structures in the human external ears and in the nose tip are examples of

- A. Ligament
- B. Areolar tissue
- C. Bone
- D. Cartilage.

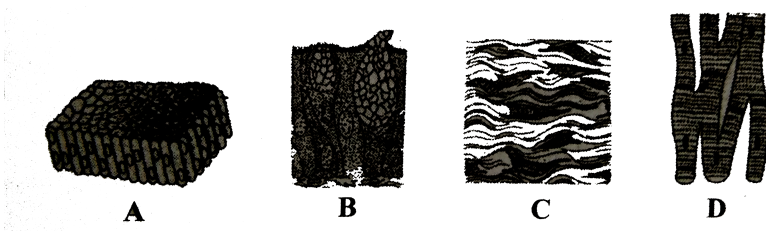
**Answer: D**



**Watch Video Solution**

**435.** The four figures (A, B, C and D) given below represent four different types of animal tissues. Which one of these is correctly identified in the

given options along with its correct location and function ?



A. b-Glandular epithelium - Intestine - Secretion

B. c - Collagen fibres - Cartilage - Attach skeletal muscles to bone

C. d- Smooth muscle tissue - Heart - Heart contraction

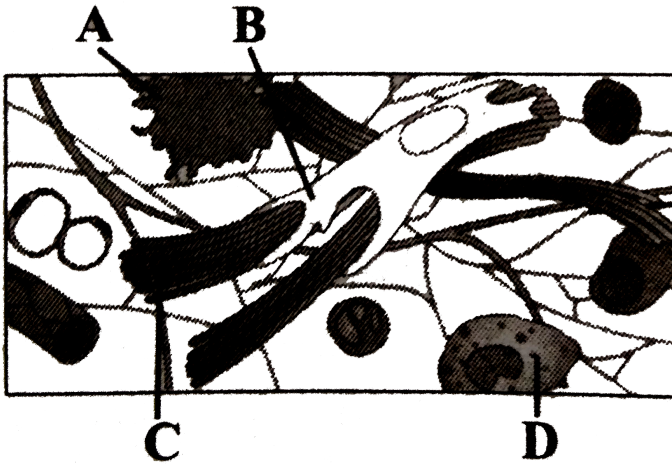
D. a - Columnar epithelium - Nephron - Secretion and Absorption.

**Answer: A**

[Watch Video Solution](#)

**436.** Given is the diagrammatic sketch of a certain type of connective tissue

Identify the parts labelled as A,B,C and D and select the correct option.



- A. Macrophage , Fibroblast , Collagen fibres , Mast cell
- B. Mast Cell, Macrophage , Fibroblast , Collagen fibres
- C. Macrophage, Collagen fibres , Fibroblast , Mast cell
- D. Mast Cell, Collagen Fibres , Fibroblast , Macrophage.

**Answer: A**

[▶ Watch Video Solution](#)

437. The cell membranes of adjacent cells are fused at

A. Macula adherens

B. Zonula adherens

C. Zoluna occludens

D. Nexus.

**Answer: C**



**Watch Video Solution**

**438.** One of the following salt predominates in bone matrix

A. Sodium chloride

B. Sodium carbonate

C. Calcium phosphate

D. Magnesium phosphate .

**Answer: C**



**Watch Video Solution**

**439.** In adult human beings , growth and cell division stop in

- A. Skin cells
- B. Bone marrow
- C. Testes and ovary
- D. Bone cells.

**Answer: D**



**Watch Video Solution**

**440.** What is autecology and synecology?



**Watch Video Solution**

**441.** Read the following statements and select the correct option

- (i) Blood cells secrete fibres of structural proteins called collagen and elastin
- (ii) Neuroglial cells protect and support the nephrons
- (iii) Osteocytes are present in spaces called lacunae
- (iv) Striated muscle fibres are bundled together in a parallel fashion
- (v) Biceps are involuntary and striated.

- A. (iii) and (iv) alone are wrong
- B. (i), (ii) and (v) alone are wrong
- C. (ii), and (iv) alone are wrong
- D. (i) and (iii) alone are wrong .

**Answer: B**



**Watch Video Solution**

**442.** Which is wrongly matched

A. Fusiform fibres - Smooth muscle

B. Cartilage - Areolar tissue

C. Unicellular glandular cells - Goblet cells

D. Saliva - Exocrine secretion

**Answer: B**



**Watch Video Solution**

**443.** Polysaccharide found in cartilage matrix is

A. Collagen

B. Hylaine

C. Ossein

D. Chondroitin.

**Answer: D**



**Watch Video Solution**



**444.** Collagen fibres are characteristic of tissue

- A. Muscle
- B. Epithelial
- C. Connective
- D. Nervous.

**Answer: C**



**Watch Video Solution**

**445.** Mummies of Egypt still have their arteries preserved due to the presence of

- A. Yellow elastic connective tissue fibres
- B. Cartilage
- C. Valves

D. White fibrous connective tissue fibres.

**Answer: A**



[Watch Video Solution](#)

**446.** Which of the following is a transparent tissue ?

A. Tendon

B. Hyaline cartilage

C. Fibrous cartilage

D. All the above.

**Answer: B**



[Watch Video Solution](#)

**447.** Mucus secreting cells of epithelial tissue are

A. Plasma cells

B. Mast cells

C. Goblet cells

D. Zymogen cells.

**Answer: C**



**Watch Video Solution**

**448.** The connective tissue that helps in maintaining body temperature in neonates is

A. Densed regular tissue

B. Brown adipose tissue

C. White adipose tissue

D. Areolar tissue.

**Answer: B**

**449.** Arrange the following in ascending order of their number per  $mm^3$  present in blood

- (a) Basophils
- (b) Lymphocytes
- (c) Eosinophils
- (d) Neutrophils
- (e) Monocytes.

A.  $a \rightarrow c \rightarrow b \rightarrow d \rightarrow e$

B.  $c \rightarrow a \rightarrow d \rightarrow e \rightarrow b$

C.  $c \rightarrow a \rightarrow d \rightarrow b \rightarrow e$

D.  $a \rightarrow c \rightarrow e \rightarrow b \rightarrow d.$

**Answer: D**

**450. Match the lists**

*I*

- (a) Simple squamous epithelium
- (b) Simple cuboidal epithelium
- (c) Nonciliated simple columnar epithelium
- (d) Transitional epithelium
- (e) Pseudostratified nonciliated columnar epithelium

*II*

- (i) Ureters
- (ii) Epididymis
- (iii) Lining of alveoli
- (iv) Lining of the stomach
- (v) Mucosa of the small intestine





- A.            a      b      c      d      e  
(A) (iii) (iv) (v) (i) (ii)
- B.            a      b      c      d      e  
(B) (i) (ii) (iv) (iii) (v)
- C.            a      b      c      d      e  
(C) (v) (iii) (ii) (iv) (i)
- D.            a      b      c      d      e  
(D) (ii) (iv) (iii) (v) (i)

**Answer: A**



**Watch Video Solution**

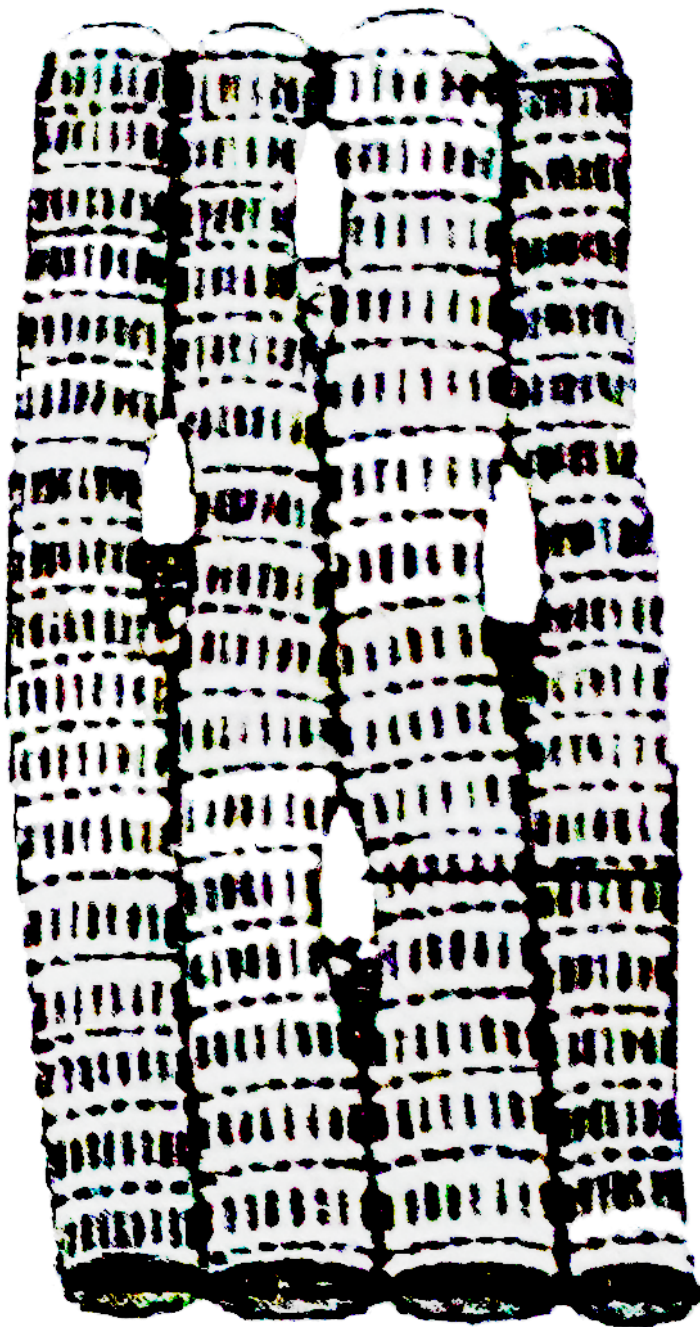
451. Select the option having all the correct characteristics.

Structure	Percentage of WBCs	Function
(A) 	0.3 – 0.5	Phagocytic
(B) 	0.5 – 1.0	Secrete histamine and serotonin
(C) 	30 – 40	Defence against parasites
(D) 	30 – 40	Allergic reactions



Watch Video Solution

452. Identify the tissue shown in the diagram and match with its characteristics and its location



A. Cardiac muscles, unbranched muscles , found in the walls of heart

B. Striated muscles tapering at both ends , attached with bones of ribs.

C. Skeletal muscles , show striations and closely attached with bones of the limbs

D. Smooth muscles , show branching , found in the walls of heart .

**Answer: C**



**Watch Video Solution**

**453.** Histology is study of

A. Tissues

B. Cells

C. Structure discernible with naked eyes

D. Changes in form and structure during development.

**Answer: A**





[Watch Video Solution](#)

**454.** Originating in bone marrow , circulating in blood for 1-2 days migrating to connective tissue and forming macrophages is a characteristic of

- A. Lymphocytes
- B. Basophils
- C. Eosinophils
- D. Monocytes.

**Answer: D**



[Watch Video Solution](#)

**455.** Read the statements and choose the correct option

1. Neuroglial cells protect and support the neurons
2. Cartilage has a hard and nonpliable matrix rich in magnesium salts

3. Smooth muscles are striated
4. Chondrocytes are bone forming cells
5. Biceps are parallelly bundled.

- A. 2 and 5 alone are wrong
- B. 2, 3 and 4 alone are wrong
- C. 1, 3 and 5 alone are wrong
- D. 1 and 5 alone are wrong .

**Answer: B**



**Watch Video Solution**

**456.** Which is unspecialised loose connective tissue

- A. Nervous system
- B. Blood
- C. Adipose tissue

D. Areolar tissue.

**Answer: D**



[Watch Video Solution](#)

**457.** The inner lining of ducts of sweat glands and pancreatic duct is formed of epithelium

- A. Pseudostratified
- B. Transitional
- C. Stratified cuboidal
- D. Stratified non-keratinised squamous.

**Answer: C**



[Watch Video Solution](#)

**458.** Dense regular connective tissue is present in

- A. Ligament and tendon
- B. Joint capsule and Wharton's jelly
- C. Periosteum and endosteum
- D. Pericardium and heart valves.

**Answer: A**



**Watch Video Solution**

**459.** The structural unit of bone is

- A. Chondrin
- B. Cyton
- C. Osteon
- D. Ossein.

**Answer: C**



**Watch Video Solution**

**460.** Read the following statements and choose the correct answer.

- (i) Gap junctions cement adjacent cells together.
- (ii) Areolar tissue contains fibroblasts , macrophages and mast cells.
- (iii) Tight junctions facilitate the cells to communicate with each other
- (iv) Adhering junctions help to stop substances from leaking across tissues
- (v) Cells of connective tissue except blood secrete fibres of structural proteins called elastin.

A. *i* and ii and iii only are wrong

B. *i* , iii and iv only are wrong

C. iii and v only are wrong

D. *i* , ii and v only are wrong .

**Answer: B**



**Watch Video Solution**

**461.** Choose the correctly matched pair

- A. Adipose tissue - Dense connective tissue
- B. Areolar tissue - Loose connective tissue
- C. Cartilage - Loose connective tissue
- D. Tendon - Specialized connective tissue.

**Answer: B**



**Watch Video Solution**

**462.** Choose the correctly matched pair

- A. Moist surface of buccal cavity - Glandular epithelium

B. Tubular parts of nephrons - Cuboidal episthelium

C. Inner surface fo bronchioles - Squamous epithelium

D. Inner lining of salivary ducts - Ciliated epithelium.

**Answer: B**



[Watch Video Solution](#)

**463.** All the following are examples of connective tissue except

A. Tendons

B. Ligaments

C. Muscle

D. Adipose tissue.

**Answer: C**



[Watch Video Solution](#)

**464.** Which one is a specialised connective tissue among these

- A. Adipose tissue
- B. Bone
- C. Areolar tissue
- D. Fibroblasts.

**Answer: B**



**Watch Video Solution**

**465.** Muscles of heart are

- A. Striated and voluntary
- B. Nonstriated and voluntary
- C. Striated unbranched and involuntary
- D. Striated , branched and involuntary .



**Answer: D**



**Watch Video Solution**

**466.** Skeletal muscle fibre is a "Syncytium" which means it is

- A. Made up of many fibres
- B. Made up of many proteins
- C. Long and slender
- D. Multinucleated.

**Answer: D**



**Watch Video Solution**

**467.** Choose the wrong statement with reference to smooth muscles

- A. Myofibrils show alternate dark and light bands

B. They are spindle-shaped uninucleate cells

C. Their contractions are under the control of autonomous nervous system

D. They exhibit prolonged contractions.

**Answer: A**

 [Watch Video Solution](#)

**468.** Wharton's jelly present in umbilical cord is an example of

A. Adipose tissue

B. Mucus connective tissue

C. Areolar tissue

D. Elastic connective tissue.

**Answer: B**

 [Watch Video Solution](#)

**469.** Assertion (A). In cardiac muscles , impulses are transmitted rapidly .  
Reason (R) . Gap junctions allow quick passage of ions from one cell to the other.

- A. Both A and R are true and R is correct explanation of A
- B. Both A and R are true but R is not correct explanation of A
- C. A is true but R is false
- D. A is false but R is true.

**Answer: A**



**Watch Video Solution**

**470.** The tissue covering the external surface of animal and internal surface of visceral organs is

- A. Adipose tissue

B. Connective tissue

C. Cartilaginous tissue

D. Epithelial tissue.

**Answer: D**



[Watch Video Solution](#)

**471.** Smooth muscles are

A. Voluntary, spindle-shaped , uninucleate

B. Involuntary , fusiform , nonstriated

C. Voluntary , multinucleate , cylindrical

D. Involuntary , cylindrical , striated.

**Answer: B**



[Watch Video Solution](#)

**472.** Pick out the correct statement from the following

- A. Tendons attach muscle to bone
- B. Ciliated epithelium is the modified columnar epithelium
- C. Adipose tissue is a type of dense connective tissue
- D. Cartilage is made up of chondrocytes.

**Answer: C**



**Watch Video Solution**

**473.** The kind of epithelial cells that form a lining of neck of renal tubule is

- A. Glandular
- B. Columnar
- C. Ciliated cuboidal
- D. Ciliated columnar.

**Answer: C**



**Watch Video Solution**

**474.** Choose the wrong statement

- A. Tight junctions help to stop substances from leaking across a tissue
- B. Adhering junctions perform cementing to keep neighbouring cells together
- C. Gap junctions facilitate the cells to communicate with each other by connecting the nuclei of adjoining cells
- D. The main function of cuboidal epithelium are secretion and absorption.

**Answer: C**



**Watch Video Solution**

**475.** Match the following

*I*

- (i) Squamous epithelium
- (ii) Dense regular connective
- (iii) Glandular epithelium
- (iv) Specialised connective
- (v) Dense irregular connective tissue

*II*

- (a) Bone
- (b) Skin tissue
- (c) Air sacs of lungs
- (d) Tendon
- (e) Goblet cells

A. i-b , ii - e, iii-c , iv -d , v-a

B. i-c , ii-e , iii-a , iv-b , v-d

C. i-c , ii-d , iii-e , iv-a , v-b

D. i-e , ii-a, iii-b , iv-d , v-c

**Answer: C**



**Watch Video Solution**

**476.** Statement (S) White adipose tissue is predominant in infants and has several small lipid droplets and numerous mitochondria

Reason. White fat is metabolically less active

- A. Both S and R are correct , R is correct explanation to S
- B. Both S and R are correct . R is not correct explanation to S
- C. S is correct but R is incorrect
- D. S is not correct but R is correct .

**Answer: D**

 [Watch Video Solution](#)

- 477.** Choose the correct statements with reference to hyaline cartilage
- (a) It is bluish white translucent and glass like cartilage
- (b) Matrix shows collagen fibres and elastin fibres
- (c) It forms embryonic endoskeleton in cyclostomes and adult cartilage fishes
- (d) It is the strongest cartilage with perichondrium.
- A. b , c and d
- B. a and c



C. a ,b and d

D. b and c.

**Answer: B**



**Watch Video Solution**

**478.** Desmosome are

A. Specialised thickened areas that facilitate cell adhesion

B. Site for storage of lecithin and pigment

C. Reservoir for peroxidases and catalases

D. Found in E. coli and Streptococcus.

**Answer: A**



**Watch Video Solution**

**479.** Which type of tissue correctly matches with its location?

- A. Cuboidal epithelium - Lining of stomach
- B. Smooth muscle - Wall of intestine
- C. Areolar tissue - Tendons
- D. Transitional epithelium - Tip of nose.

**Answer: B**



**Watch Video Solution**

**480.** Gerdy's fibres are

- A. Ligament of neck
- B. Ligament of ankle
- C. Ligament of palm
- D. Ligament of face.

**Answer: C**



**Watch Video Solution**

## Check Your Grasp

1. In origin , epithelium is

- A. Ecotodermal
- B. Mesodermal
- C. Endodermal
- D. All the above.

**Answer: D**



**Watch Video Solution**

2. Stereocilia occurs on some of the cells lining

- A. Digestive tract
- B. Male reproductive tract
- C. Female reproductive tract
- D. Urinary tract.

**Answer: B**

 [Watch Video Solution](#)

**3. Muroid connective tissue occurs in**

- A. Subcutaneous regions
- B. Around reproductive organs
- C. Umbilical cord
- D. Placenta.

**Answer: C**

 [Watch Video Solution](#)

4. Brown fat occurs in

- A. Embryo
- B. Liver
- C. Around kidneys
- D. Eye cushion.

**Answer: A**



**Watch Video Solution**

5. The term histology was coined by

- A. Malpighi
- B. Bichat
- C. Mayer

D. Hertwig.

**Answer: C**



**Watch Video Solution**

6. An epithelium lacking basement membrane is

A. Sensory

B. Glandular

C. Pseudostratified

D. Transitional.

**Answer: D**



**Watch Video Solution**

7. Which one of the following is the most abundant protein in the animals?

A. Collagen

B. Elastin

C. Reticulin

D. Keratin.

**Answer: A**



[Watch Video Solution](#)

8. Major constituent of human body is

A. Skeleton

B. Mucles

C. Connective tissue

D. Extracellular fluid.

**Answer: B**



**Watch Video Solution**

**9. Largest erythrocytes are found in**

- A. Llama
- B. Whale
- C. Amphiuma
- D. Musk Deer.

**Answer: C**



**Watch Video Solution**

**10. Power of regeneration is poor in**

- A. Bone



B. Cartilage

C. Adipose tissue

D. Nervous.

**Answer: D**



**Watch Video Solution**