



BIOLOGY

BOOKS - DINESH PUBLICATION ENGLISH

TRANSPORT IN PLANTS

Multiple Choice

1. The membrane that allows some of solute molecules to pass through it and prevent others is called

- A. Permeable membrane
- B. Semipermeable membrane
- C. Selectively or differentially permeable membrane.
- D. Impermeable membrane

Answer: C



[Watch Video Solution](#)

2. The external solution having more concentration than the cell sap is called

- A. Hypertonic solution
- B. Isotonic solution
- C. Hypotonic solution
- D. None of the above

Answer: A



[Watch Video Solution](#)

3. The external solution having same concentration than the cell sap is called

- A. Hypertonic solution

B. Isotonic solution

C. Hypotonic solution

D. None of the above

Answer: B



[Watch Video Solution](#)

4. The external solution having less concentration as that the of cell sap is called

A. Hypertonic solution

B. Isotonic solution

C. Hypotonic solution

D. Ultratonic solution

Answer: C



[Watch Video Solution](#)

5. The Pressure exerted by the swelling protoplast on the walls of the cell

is

- A. Wall pressure
- B. Osmotic pressure
- C. Suction pressure
- D. Turgor pressure .

Answer: D



[Watch Video Solution](#)

6. The pressure exerted by wall of the cell on the protoplast is

- A. W.P.
- B. T.P.
- C. D.P.

D. O.P.

Answer: A



[Watch Video Solution](#)

7. The membrane which allows the solvent molecules to pass through it and not the solute molecules is called

- A. Impermeable membrane
- B. Semipermeable membrane
- C. Permeable membrane
- D. None of the above

Answer: B



[Watch Video Solution](#)

8. Net movement of water is from

- A. Low DPD to high DPD
- B. High DPD to low DPD
- C. DPD gradient plays no role
- D. None of the above

Answer: A



[Watch Video Solution](#)

9. Cell turgidity is caused by

- A. Endosmosis
- B. Exosmosis
- C. Plasmolysis
- D. Diffusion

Answer: A



[Watch Video Solution](#)

10. Which helps in maintaining form and structure of cells

- A. Wall pressure
- B. Turgidity
- C. Atmospheric pressure
- D. D.P.D

Answer: B



[Watch Video Solution](#)

11. Fresh grapes shall shrink when they are placed in

- A. Hot water

B. Cold water

C. Starch water

D. Concentrated salt solution

Answer: D



Watch Video Solution

12. O.P. of a call can be measured by

A. Manometer

B. Photometer

C. Calorimeter

D. Plasmolysis

Answer: D



Watch Video Solution

13. O.P. of a solution can be measured by

- A. Photometer
- B. Osmometer
- C. Calorimeter
- D. Plasmolysis

Answer: B



[Watch Video Solution](#)

14. The common material used in demonstrating plasmolysis in the laboratory is

- A. Garden Nasturium
- B. Balsam
- C. Banyan
- D. Tradescantia

Answer: D



[Watch Video Solution](#)

15. A cell with fully elastic wall is placed in hypertonic solution. What will not happen ?

- A. Change in cell size and shape
- B. The whole cell will shrink
- C. Cytoplasm shrinks from the cell wall and undergoes plasmolysis
- D. Decrease in cell size .

Answer: C



[Watch Video Solution](#)

16. Gum swells up in the water due to

A. Imbibition

B. Diffusion

C. Endosmosis

D. Turgidity.

Answer: A



Watch Video Solution

17. When a cell is placed in 0.25 M concentrated sugar solution, there is no change in it. So the external solution is called

A. Hypertonic

B. Isotonic

C. Hypotonic

D. None of the above

Answer: B

 [Watch Video Solution](#)

18. When a cell is placed in 0.25 M concentrated sugar solution, there is no change in it. The concentration of cell sap would be

A. 0.025 M

B. 0.25 M

C. 25 M

D. None of the above

Answer: B

 [Watch Video Solution](#)

19. A cell when dipped in 0.5 M sucrose solution has no effect but when the same cell will be dipped in 0.5 M NaCl solution the cell will

A. Decrease in volume

- B. Increase in volume
- C. No change in volume
- D. None of the above

Answer: A

 [Watch Video Solution](#)

20. When chemical fertilisers are given to plants, the soil is to be thoroughly watered otherwise the plants get killed because of

- A. Toxic effects of chemical (fertilisers) compounds
- B. Plasmolysis due to high concentration of fertilisers
- C. Failure of physiological process like photosynthesis and respiration
- D. None of the above

Answer: B

 [Watch Video Solution](#)

21. The pressure that prevails in cell due to number of substances dissolved in cell sap is

- A. Wall pressure
- B. Turgor pressure
- C. Osmotic pressure
- D. Diffusion pressure.

Answer: C



[Watch Video Solution](#)

22. The selectively permeable membrane of the cell is

- A. Plasmalemma
- B. Cytoplasm
- C. Cell wall

D. None of the above

Answer: A



Watch Video Solution

23. The plasmolysed cells regain turgidity and assume original volume under influence of hypotonic solution. The process is called

- A. plasmolysis
- B. Deplasmolysis
- C. Endosmosis
- D. Exosmosis

Answer: B



Watch Video Solution

24. Diffusion pressure deficit is the amount by which two solutions differ in their

A. T.P.

B. O.P

C. D.P.

D. W.P.

Answer: C



[Watch Video Solution](#)

25. In biological system, the term osmosis involves the diffusion of

A. Water

B. Solutes

C. Energy

D. Both A and B.

Answer: A



[Watch Video Solution](#)

26. The practice of breaking of rocks during rainy season by inserting wooden pegs in them is based on the phenomenon of

- A. Imbibition Pressure
- B. Osmotic pressure
- C. Matric potential
- D. Plasmolysis

Answer: C



[Watch Video Solution](#)

27. Endosmosis takes place when a plant cell is immersed in

- A. Isotonic solution
- B. Hypotonic solution
- C. Hypertonic solution
- D. HCL solution.

Answer: B

 [Watch Video Solution](#)

28. Imbibition occurs when

- A. Grapes are dipped in saturated solution
- B. Wood is placed in ether
- C. Rubber is dipped in ether
- D. Rubber is dipped in water

Answer: C

 [Watch Video Solution](#)

29. A solution of 1.0 M glucose develops a pressure of -27 bars in an osmometer. What is not correct ?

- A. Pressure potential is -27 bars
- B. Osmotic pressure is 27 bars
- C. Osmotic potential is -27 bars
- D. Solute potential is -27 bars

Answer: A



Watch Video Solution

30. 1 gm molar solution is

- A. 1 gm mole of solute dissolved in 1000 ml of solvent
- B. 1 mole of solute dissolved in 1000 ml of solution
- C. 1 gm of solute dissolved in 1000 ml of solvent

D. 1 gm of solute dissolved in 1000 ml of solvent

Answer: B



[Watch Video Solution](#)

31. An animal cell placed in pure water will

- A. Swell up and burst
- B. Shrink and die
- C. Shrink and undergo Plasmolysis
- D. Swell up and develop turgidity

Answer: A



[Watch Video Solution](#)

32. Osmotic potential of pure water is

A. One

B. Zero

C. Less than Zero

D. Between zero and one .

Answer: B

 [Watch Video Solution](#)

33. A plant cell placed in water will

A. Swell up and become turgid

B. Swell up and burst

C. Lose water and become flaccid

D. Shrink and die.

Answer: A

 [Watch Video Solution](#)

34. Water potential is the sum of opposing forces of

- A. Osmotic pressure and diffusion potential deficit
- B. Solute potential and osmotic potential
- C. Solute potential and pressure potential
- D. Diffusion pressure deficit and turgor pressure

Answer: C



Watch Video Solution

35. Passage of water across a selectively permeable membrane is

- A. Active transport
- B. Pinocytosis
- C. Facilitated diffusion

D. Osmosis.

Answer: D



Watch Video Solution

36. Land plants grow in soils which possess an osmotic concentration

- A. Hypotonic in relation to cells
- B. Hypertonic in relation to cells
- C. Isotonic in relation to cells
- D. ultratonic in relation to cells .

Answer: A



Watch Video Solution

37. What will happen when pollen grain is placed in water ?

- A. It will germinate and produce a pollen tube
- B. The pollen grain does not germinate
- C. The pollen grain swells up but bursts at places without forming a pollen tube
- D. The pollen grain forms a number of pollen tubes

Answer: C



Watch Video Solution

38. In thistle funnel experiment, entry of water into thistle funnel stops after some time automatically due to

- A. Diffusion of sugar out of thistle funnel
- B. External and internal solutions become isotonic
- C. Development of hydrostatic pressure in the thistle funnel
- D. Development of hydrostatic pressure in the beaker.

Answer: C



Watch Video Solution

39. Seeds placed in water imbibe the same because of

A. Exosmosis

B. Higher Ψ_w

C. Lower Ψ_w

D. Pressure of vacuoles

Answer: C



Watch Video Solution

40. Potometers are made on the principle that

- A. The amount of water transpired is approximately equal to amount of water absorbed
- B. The amount of water transpired is more than the amount of water absorbed
- C. The amount of water transpired is less than the amount of water absorbed
- D. Humidity causes reduction in transpiration.

Answer: A



[Watch Video Solution](#)

41. The process in which loss of water occurs in the form of water vapour is

- A. Respiration
- B. Guttation

C. Transpiration

D. Exosmosis

Answer: C



Watch Video Solution

42. Stomatal aperture is surrounded by guard cells and widens (opens) when guard cells are

A. Flaccid

B. Turgid

C. Bean shaped

D. Dumb-bell shaped .

Answer: B



Watch Video Solution

43. The stomatal are celled sunken when

- A. Guard cells are in the line with epidermal cells
- B. Guard cells are situated below epidermal cells
- C. Guard cells are situated above epidermal cells
- D. Guard cells occur in lower epidermal

Answer: B



[Watch Video Solution](#)

44. Transpiration is high under

- A. Dry environment
- B. Low atmospheric pressure
- C. High temperature
- D. All the above

Answer: D



Watch Video Solution

45. Sunken stomate

- A. Increase transpiration
- B. Decrease tranpiration
- C. Hinder transpiration
- D. Stop transpiration

Answer: B



Watch Video Solution

46. Stomatal frequency indicates

- A. Number of stomata per unit area

- B. Rate of water loss
- C. Rate of gaseous exchange
- D. Width of stomatal aperture.

Answer: A

 [Watch Video Solution](#)

47. In dorsiventral leaf, the number of stomata per unit area are

- A. More on upper surface
- B. More on lower surface (epidermis)
- C. More on upper surface (epidermis)
- D. Absent on upper surface (epidermis)

Answer: B

 [Watch Video Solution](#)

48. In isobilateral leaf, the number of stomata per unit area are

- A. More on upper surface
- B. More on lower surface
- C. Approximately same on both the surfaces
- D. Absent on upper surface

Answer: C



Watch Video Solution

49. In xerophytic leaf the stomate are situated

- A. On both surfaces
- B. On upper surface
- C. On lower surface
- D. Absent from both surfaces

Answer: C



Watch Video Solution

50. The loss of water in the form of water drops is called

- A. Transpiration
- B. Respiration
- C. Guttation
- D. Exosmosis

Answer: C



Watch Video Solution

51. Guttation is form

- A. Uninjured edges of leaves near vein endings

B. Epidermal layers of leaf surfaces

C. Injured edges of leaves

D. None of the above

Answer: A



[Watch Video Solution](#)

52. Transpiration is unavoidable evil because of

A. Structure of leaf and harmful effect

B. Beneficial and harmful effect

C. Maintenance of turgidity for growth

D. Gaseous exchange for photosynthesis and respiration

Answer: D



[Watch Video Solution](#)

53. Drooping of leaves due to loss of turgor at noon but recovery in the evening is referred to as

- A. Temporary wilting
- B. Incipient wilting
- C. Permanent wilting
- D. Midday desiccation

Answer: A



[Watch Video Solution](#)

54. Loss of water by cells without external sign of leaf drooping is known as

- A. Temporary wilting
- B. Nascent wilting
- C. Incipient wilting

D. Permanent wilting.

Answer: C



[Watch Video Solution](#)

55. Plants with scotoactive stomate perform

A. C₄ photosynthesis

B. CAM photosynthesis

C. C₃ photosynthesis

D. Anoxygenic photosynthesis.

Answer: B



[Watch Video Solution](#)

56. Day time loss of water in the vapour form from stomata is a trade off for intake of

- A. Minerals
- B. Oxygen
- C. Carbon dioxide
- D. Energy

Answer: C



[Watch Video Solution](#)

57. For keeping stomata open, besides K ions the guard cells require a constant supply of

- A. ABA
- B. ATP
- C. Organic acids

D. Protons

Answer: B



Watch Video Solution

58. Presence of stomata on the under surface of dorsiventral leaf is a mechanism of

- A. Reduction in transpiration
- B. Protection from dust
- C. Proper regulation of transpiration
- D. Increase in transpiration

Answer: A



Watch Video Solution

59. An antitranspirant is

- A. Phenyl mercuric acid
- B. Abscisic acid
- C. Salicylic acid
- D. All the above

Answer: D



Watch Video Solution

60. Transpiration is a process related to

- A. Osmosis
- B. Diffusion
- C. Activated transport
- D. Facilitated diffusion

Answer: B



Watch Video Solution

61. Presence of hair on the leaf surface

- A. Reduces transpiration
- B. Increases transpiration
- C. Helps in rapid exchange of gases
- D. Prevents guttation

Answer: A



Watch Video Solution

62. Some plants possess modifications like phyllodes, scale leaves, etc. for

- A. Differentiation and evolution

- B. Decreasing transpiration
- C. Increasing transpiration
- D. Storage of absorbed water

Answer: B



[Watch Video Solution](#)

63. Rate of transpiration is inversely related to

- A. Humidity
- B. Light
- C. Temperature
- D. Water

Answer: A



[Watch Video Solution](#)

64. Which of the following shows guttation ?

- A. *Pisum sativum*
- B. *Ficus bengalensis*
- C. *Acacia nilotica*
- D. *Tropaeolum*

Answer: D



Watch Video Solution

65. Plants exhibit subepidermal evaporation of water during

- A. Photosynthesis
- B. Guttation
- C. Transpiration
- D. Respiration

Answer: C



[Watch Video Solution](#)

66. Of the following four dorsiventral leaves which will show the maximum loss of weight

- A. Smearred with vaseline on both surfaces
- B. Smearred with vaseline on the upper surface
- C. Smearred with vaseline on the lower surface
- D. Unsmearred

Answer: D



[Watch Video Solution](#)

67. Starch degradation activity of enzyme phosphorylase increases under

- A. High pH
- B. Low pH
- C. Neutral medium
- D. Not connected with pH.

Answer: A

 [Watch Video Solution](#)

68. Scotoactive movement of stomata is that

- A. Stomata open at night
- B. Stomata open during day
- C. Stomata close at night
- D. Stomata open both during day and night .

Answer: A

 [Watch Video Solution](#)

69. Which view is considered best for turgor changes in guard cells

- A. Photosynthesis of chloroplasts in guard cells
- B. Starch is converted into sugar in guard cells
- C. Starch is converted into glucose in guard cells
- D. Potassium is transported into guard cells.

Answer: D



[Watch Video Solution](#)

70. Guttational drop comprises

- A. Simple water
- B. Water and various salts dissolved in it
- C. Water and inorganic salts

D. Water and organic salts.

Answer: B



[Watch Video Solution](#)

71. Cobalt chloride method for demonstration of transpiration was first used by

A. Freemenn

B. Stahl

C. Darwin

D. Ganong

Answer: B



[Watch Video Solution](#)

72. Porometer was developed by

- A. Darwin
- B. Freeman
- C. Livingston
- D. Ganong

Answer: A



[Watch Video Solution](#)

73. A leafy shoot is enclosed air tightly in a flask. The flask become moist on the inner surface due to

- A. Guttation
- B. Evaporation
- C. Transpiration
- D. Cooling effect

Answer: C



Watch Video Solution

74. The most effective light for stomatal opening is

A. Yellow

B. Green

C. Red

D. Blue

Answer: D



Watch Video Solution

75. Opening and closing of stomata is due to the :-

A. K^+ ion influx and efflux

B. Change in pH

C. Starch Sugar interconversion

D. Photosynthetic activity of guard cell chloroplasts

Answer: C



[Watch Video Solution](#)

76. Who proposed that opening and closing of stomata is connected with the change in pH of guard cells

A. Lloyd

B. Von Mohl

C. Sayre/Scarath

D. Levitt

Answer: C



[Watch Video Solution](#)

77. Stomata remain open when relative humidity is

- A. Above 70%
- B. 50%-70%
- C. 30%-50%
- D. Below 30%

Answer: A



[Watch Video Solution](#)

78. Stomata close at relative humidity of

- A. 60%-70%
- B. 50%-60%
- C. 50%-70%
- D. Less than 50%

Answer: D

 [Watch Video Solution](#)

79. Transpiration efficiency/transpiration ration is

- A. Water absorbed to water transpired
- B. Unit weight of dry matter synthesised in relation to units of water transpired by the plant
- C. Unit weight of dry matter in realtion to water consumed
- D. Unit weight of water transpired to unit weight of dry matter synthesised

Answer: D

 [Watch Video Solution](#)

80. A mesophytic plant growing in well watered soil shows decreased transpiration in the afternoon due to

- A. Closure of many stomata
- B. Contraction of cuticle
- C. Less water availability from soil
- D. High rate of photosynthesis

Answer: A



Watch Video Solution

81. During high wind velocity, the stomata

- A. Open more widely
- B. Close down
- C. Remain unaffected
- D. Remain unaffected but lose more water due to mass action

Answer: B

 [Watch Video Solution](#)

82. Which of the following hypostomatous leaves would dry up last

- A. Both surfaces greased
- B. Both surfaces ungreased
- C. Lower surfaces greased
- D. Upper surfaces greased

Answer: A

 [Watch Video Solution](#)

83. In majority of dicot plant, the guard cells are

- A. Dumb-bell shaped

B. Bean shaped

C. Rounded

D. Polygonal

Answer: B



[Watch Video Solution](#)

84. Dumbell shaped guard cells are found in

A. Gymnosperms

B. Most dicots

C. Cereals

D. Xerophytes

Answer: C



[Watch Video Solution](#)

85. Cobalt chloride is blue in anhydrous state . In contact with water vapours it turns

A. Yellow

B. Pink

C. Red

D. Green

Answer: B



[Watch Video Solution](#)

86. The maximum absorption of water by roots occurs in the (region) zone of

A. Root cap

B. Cell division

C. Cell elongation

D. Cell maturation

Answer: C



Watch Video Solution

87. The phenomenon of absorption of water that depends on water loss from aerial parts of plant (Transpiration) is

- A. Active absorption
- B. Passive absorption
- C. Both passive and active absorption
- D. None of the above

Answer: B



Watch Video Solution

88. The metabolic activities of root cells are the main cause of water absorption in

- A. Passive absorption
- B. Active absorption
- C. Both passive and active absorption
- D. None of the above

Answer: B



[Watch Video Solution](#)

89. The movement of water is along

- A. 1.Turgor gradient
- B. 2.DPD gradient
- C. 3.Diffusion gradient
- D. 4.Osmotic gradient

Answer: B



[Watch Video Solution](#)

90. The energy is required in absorption of water in

- A. Active absorption
- B. Passive absorption
- C. Both passive and active absorption
- D. None of the above

Answer: A



[Watch Video Solution](#)

91. The most dominant role in the absorption of water is that of

- A. Active absorption

- B. Passive absorption
- C. Both passive and active absorption
- D. None of the above

Answer: B



[Watch Video Solution](#)

92. The absorption of water is not affected when

- A. Soil is water logged (poorly aerated)
- B. Soil temperature increases
- C. Soil solution is highly concentrated
- D. Soil water is available in maximum

Answer: D



[Watch Video Solution](#)

93. For absorption of water, the root hairs act as

- (a) Sucking organs
- (b) Osmotic system
- (c) Manometer
- (d) Anemometer

A. Sucking organs

B. Osmotic system

C. Manometer

D. Anemometer

Answer: B



[Watch Video Solution](#)

94. Optimum temperature for water absorption by plants is

A. $0^{\circ} - 5^{\circ} C$

B. $5^{\circ} - 20^{\circ} C$

C. $20^{\circ} - 25^{\circ} C$

D. $40^{\circ} - 50^{\circ} C$

Answer: C



[Watch Video Solution](#)

95. At 0 degree C soil temperature the rate of water absorption

A. Increases

B. Non affected

C. Decreases

D. Appreciable

Answer: C



[Watch Video Solution](#)

96. As water and minerals move toward the vascular cylinder of a root, they must enter the cytoplasm of

- A. Pericycle cells
- B. Endodermal cells
- C. Cortical cells
- D. Xylem parenchyma.

Answer: B



[Watch Video Solution](#)

97. A living continuum of cells connected by plasmodesmata is

- A. Dermal tissue
- B. Ground complex
- C. Donnan free space
- D. Symplast.

Answer: D



[Watch Video Solution](#)

98. A nonliving continuum of cells walls and intercellular spaces is

- (a) Ground complex
- (b) Alburnum
- (c) Apoplast
- (d) Desmotubule

A. Ground complex

B. Alburnum

C. Apoplast

D. Desmotubule

Answer: C



[Watch Video Solution](#)

99. A water - logged soil is considered to be physiologically dry because of

- A. Anaerobic conditions
- B. Nonmovement of water capillaries
- C. Increased viscosity of water
- D. Abundance of salts

Answer: A



[Watch Video Solution](#)

100. Water tightly held to soil particles all of the above

- A. Bound water
- B. Hygroscopic water
- C. Runaway water
- D. all of the above

Answer: B



[Watch Video Solution](#)

101. At field capacity the soil contains

- A. Capillary and gravitational water
- B. Capillary and runaway water
- C. Capillary and hygroscopic water
- D. Capillary, hygroscopic and bound water

Answer: D



[Watch Video Solution](#)

102. The phenomenon which forces water upwards into tracheary elements of xylem in the root region is

- A. Transpiration
- B. Root pressure
- C. Turgor pressure
- D. Imbibition pressure

Answer: B

 [Watch Video Solution](#)

103. Root pressure is caused by:

- A. Osmotic flow of water into xylem of absorbing part of root
- B. Loss of water from xylem of plant due to transpiration
- C. Low water potential of leaves
- D. High water potential of leaves

Answer: C

 [Watch Video Solution](#)

104. Osmotic theory of active water absorption was given

- A. Kramer (1941)
- B. Eaton (1943)
- C. Atkins(1916)
- D. Priestley (1923)

Answer: D



Watch Video Solution

105. The lowest water potential is found in the xylem channels of

- A. Stem
- B. Root
- C. Root in the root hair zone

D. Leaves.

Answer: A



Watch Video Solution

106. Contribution of passive water absorption to total water absorption is

A. 50 %

B. 70 %

C. 80 – 90 %

D. 96 – 100 %

Answer: C



Watch Video Solution

107. Force for passive water absorption develops in

A. Xylem

B. Aerial parts

C. Root

D. Root hairs

Answer: B



[Watch Video Solution](#)

108. Force for passive water absorption develops in

A. Xylem

B. Aerial parts

C. Root

D. Root hairs

Answer: C



[Watch Video Solution](#)

109. Rate of water absorption generally follows closely the rate of

- A. Transpiration
- B. Photosynthesis
- C. Respiration
- D. Growth

Answer: A



Watch Video Solution

110. The phenomenon related to active water absorption is

- A. Transpiration
- B. Root pressure
- C. Osmotic pressure

D. Translocation

Answer: B



Watch Video Solution

111. Root pressure can be demonstrated by means of

A. Wilting

B. Guttation

C. Transpiration

D. Exudation/bleeding

Answer: D



Watch Video Solution

112. Strasburger rejected the vital force theory on the ground that

A. Living cells are incapable of translocation

B. Water rises in dead cells

C. Respiration occurs in living cells

D. Living cells are capable of growth

Answer: B



Watch Video Solution

113. The pressure that develops in roots due to the metabolic activities of living cells is

A. Turgor pressure

B. Osmotic pressure

C. Root pressure

D. Diffusion pressure

Answer: C

 [Watch Video Solution](#)

114. Which of the following statement is wrong in root-pressure concept of ascent of sap

- A. Water can be raised to a height of 6'-7'
- B. Water moves upward in the absence of shoot
- C. Water movement by this force is slow
- D. Root pressure operates in all the plants

Answer: D

 [Watch Video Solution](#)

115. Imbibition theory was given by

- A. Sachs
- B. Boehm

C. Scholander

D. Curtis

Answer: A



Watch Video Solution

116. Cohesive force of water molecules is of the magnitude of (Dixon and Joly)

A. 1-10 atm

B. 10-15 atm

C. 45-200 atm

D. 15-45 atm

Answer: C



Watch Video Solution

117. The following evidences rejected the atmospheric pressure theory.

Which of them is incorrect

- A. It can raise water to height of 32 feet only if complete vacuum is created
- B. Free surface of water is required for proper operation of atmospheric pressure which is readily available in plants
- C. Pressure falls below that of atmospheric pressure because of transpiration
- D. Water rises rapidly to compensate the water loss because of atmospheric pressure.

Answer: B



[Watch Video Solution](#)

118. Which of the following is not the least convincing in the imbibitional theory of ascent of sap

- A. The imbibitional force is very high from 100-1000 atm
- B. The imbibitional force can raise the water to a height of 200'-400'
.i.e. the tallest tree
- C. The movement of water is along the walls of the xylem vessels and not through the lumen (cavity) of the vessels
- D. The movement of water, no doubt is slow, but to some extent can keep pace with tranpiration

Answer: C



Watch Video Solution

119. The girdling or ringing experiment is that

- A. The metallic ring is tightly tied to a stem

- B. The ring of tissue external to xylem is removed in a stem
- C. The area is simply marked in the form of ring in a stem
- D. None of the above

Answer: B



[Watch Video Solution](#)

120. The girdling or ringing experiment to prove that the water moves through the xylem vessels was performed by

- A. Stocking
- B. Malpighi
- C. Molisch
- D. Askenasy

Answer: B



[Watch Video Solution](#)

121. Capillarity theory was proposed by

- A. Unger
- B. Sachs
- C. Bohm
- D. Mac Dougal

Answer: C



Watch Video Solution

122. The chief function of a xylem vessel in a plant body is to:

- A. To provide mechanical support to the plant
- B. To conduct organic food from one part of the plant to another
- C. To conduct water and minerals from one part of the plant to another

D. None of the above

Answer: C



Watch Video Solution

123. A girdled plant will eventually die because of

- A. Absence of downward movement of water
- B. Absence of upward movement of water
- C. Absence of upward supply of organic nutrients
- D. Absence of downward movement of organic nutrients.

Answer: D



Watch Video Solution

124. The cut end of a shoot is dipped in eosine solution. What will happen ?

- A. Ascent of sap does not occur
- B. Ascent of sap does not occur but the leaves remain fresh
- C. Leaves wilt but ascent of sap continues
- D. Ascent of sap occurs and the tracheary elements get stained.

Answer: D



[Watch Video Solution](#)

125. Root pressure theory of ascent of sap is unacceptable because

- A. Water can ascend without root or root pressure
- B. Root pressure cannot explain ascent of sap beyond 10 meters
- C. Root pressure is more during early morning than afternoon
- D. Root pressure does not occur in spring .

Answer: A



[Watch Video Solution](#)

126. Transpiration cohesion theory explains that the upwards pull of water is transmitted from top to bottom by cohesion of molecules caused by

- A. Hydrophilic cell walls
- B. Hydrogen bonds
- C. Oxygen bonds
- D. Surface tension

Answer: B



[Watch Video Solution](#)

127. Rising column of water does not break its connection with xylem walls despite negative pressure or tension due to

- A. Cohesion amongst water molecules
- B. Strong transpiration pull
- C. Adhesion
- D. Surface tension

Answer: C



Watch Video Solution

128. Ascent of sap is

- A. Upward movement of water and minerals in the plant
- B. Downward movement of organic nutrients
- C. Upward and downward movement of water in the plant
- D. Redistribution of inorganic substances in the plant

Answer: A



[Watch Video Solution](#)

129. Instrument that can be used to demonstrate pull due to vaporisation of water is

- A. Potometer
- B. Atmometer
- C. Auxanometer
- D. Anemometer

Answer: B



[Watch Video Solution](#)

130. The transport of sap from root to top of the plant is

A. Ascent of sap

B. Conduction

C. Transport

D. Translocation

Answer: A

 [Watch Video Solution](#)

131. In xylem, the ascent of sap takes place in

A. Tracheids with associated xylem parenchyma

B. Walls of tracheary elements

C. Xylem parenchyma

D. Lumen of tracheary elements

Answer: D

 [Watch Video Solution](#)

132. The force with which water molecules are held together in xylem is

- A. Imbibition pressure
- B. Osmotic pressure
- C. Adhesion force
- D. Cohesion force

Answer: D



[Watch Video Solution](#)

133. Root pressure is unable to explain the ascent of sap because it is not found in

- A. Bryophytes
- B. All plants in all seasons
- C. Trees

D. Spring.

Answer: B



Watch Video Solution

Revision Questions From Competitive Exams

1. Which of the following determines the diffusion of water from one cell to another?

- (a) Diffusion pressure deficit
- (b) Hydrostatic pressure
- (c) Osmotic pressure
- (d) Wall pressure

A. T.P.

B. D.P.D./ Ψ_w

C. O.P.

D. W.P.

Answer: B



Watch Video Solution

2. DPD is abbreviated form of

- A. Daily photosynthetic deficit
- B. Daily phosphous deficit
- C. Daily pressure deficit
- D. Diffusion pressure deficit

Answer: D



Watch Video Solution

3. Swelling of wooden frames during rains is caused by

A. Endosmosis

B. Imbibition

C. Capillarity

D. Osmosis.

Answer: B



Watch Video Solution

4. Osmosis involves

A. Diffusion of suspended particles from higher to lower concentration

B. Diffusion of suspended particles from lower to higher concentration

C. Diffusion of water from more to less concentrated side

D. Diffusion of water from less to more concentrated side

Answer: D



[Watch Video Solution](#)

5. A cell is plasmolysed after being kept in hypertonic solution . What will be present between cell wall and plasmalemma ?

- A. Isotonic solution
- B. Hypertonic solution
- C. Air
- D. Hypotonic solution

Answer: B



[Watch Video Solution](#)

6. When raisins (Kismis) are placed in water , they swell due to the process of

A. plasmolysis

B. Adsorption

C. Diffusion

D. Endosmosis

Answer: D



Watch Video Solution

7. Osmosis is

A. Flow of solvent (water) through a semipermeable membrane from less

B. Flow of solute from a semipermeable membrane

C. Flow of water without a membrane

D. None of the above

Answer: A



Watch Video Solution

8. A cell increases in volume, if the external medium is

- A. Hypotonic
- B. Hypertonic
- C. Isotonic
- D. None of the above

Answer: A



Watch Video Solution

9. DPD is equal to

- A. $OP \times TP(WP)$
- B. $OP+TP(WP)$
- C. $OP-TP(WP)$

D. TP(WP)-OP.

Answer: C



[Watch Video Solution](#)

10. If cell gets reduced in size when placed in solution, the solution is

A. Hypertonic

B. Hypotonic

C. Weak

D. Saturated

Answer: A



[Watch Video Solution](#)

11. In a fully turgid cell, which one of the following would be zero

- A. Turgor pressure/pressure potential
- B. Wall pressure
- C. Suction pressure/DPD/water potential
- D. Osmotic pressure (solute pressure)

Answer: C

 [Watch Video Solution](#)

12. A beet root slice is first washed and then placed in cold water and it does not lose its anthocyanin. This shows that membrane is

- A. permeable to anthocyanin
- B. Impermeable to anthocyanin
- C. Differentially permeable to anthocyanin.
- D. Dead structure

Answer: B

 [Watch Video Solution](#)

13. If a thin slice of sugar beet is placed in concentrated solution of $NaCl$, then

- A. Become swollen
- B. Lose water and become flaccid
- C. Absorb small quantity of water
- D. Show no change .

Answer: B

 [Watch Video Solution](#)

14. Osmosis is

- A. passage of solvent only through a semipermeable membrane
- B. passage of solutes only through a membrane

C. passage of both solvent and solute through a membrane

D. passage of solution through a protoplasm.

Answer: A



Watch Video Solution

15. Osmotic pressure is maximum in

A. Hydrophytes

B. Halophytes

C. Xerophytes

D. Mesophytes

Answer: B



Watch Video Solution

16. Water passes into a cell due to

A. O.P.

B. D.P.D.

C. W.P.

D. Diffusion.

Answer: B



[Watch Video Solution](#)

17. Water potential is equal to

A. $\Psi_s + \text{O.P.}$

B. $\Psi_s = \text{T.P.}$

C. $\Psi_p + \text{psi}_w$

D. $\Psi_s + \Psi_p$.

Answer: D



Watch Video Solution

18. Osmotic pressure in a vacuolated plant cell is

- (a) Equal to W.P.
- (b) Equal to T.P.
- (c) More than D.P.D.
- (d) Less than D.P.D.

A. Equal to W.P.

B. Equal to T.P.

C. More than D.P.D.

D. Less then D.P.D.

Answer: C



Watch Video Solution

19. In a plant cell, O.P. is equal to

A. T.P.-D.P.D.

B. D.P.D.-T.P

C. T.P.-D.P.

D. D.P.D.+T.P.

Answer: D



Watch Video Solution

20. When one does not involve osmosis

A. Water passing from one xylem element to the other above it

B. Water passing from soil to root hair

C. Water passing into mesophyll cell from xylem

D. Water passing from root hair cell to cortical cell

Answer: A



Watch Video Solution

21. Imbibition involves

A. Diffusion

B. Movement of water into imbibant through capillarity

C. Movement of water into imbibant through diffusion as well as capillary action

D. Adsorption of water

Answer: C



Watch Video Solution

22. A bottle filled with previously moistened mustard seeds and water was screw capped tightly and kept in a corner. It blew up suddenly after about

half an hour. The phenomenon involved is

- A. Diffusion
- B. Imbibition
- C. Osmosis
- D. D.P.D

Answer: B



Watch Video Solution

23. A semipermeable membrane allows

- A. Solutes
- B. Solvent
- C. Both solvent and solutes
- D. None of the above

Answer: B



Watch Video Solution

24. Under given suitable conditions, the DPD will be more than OP when

A. $O.P. < T.P.$

B. $O.P. = T.P.$

C. T.P. is negative

D. $OP > T.P.$

Answer: C



Watch Video Solution

25. When the concentration of the soil solutes is low the absorption of water

A. Stopped

B. Increased

C. Reterded

D. Normal.

Answer: B



Watch Video Solution

26. Excessive supply of chemical fertilizers often causes wilting/death of crop plant due to

A. Exosmosis

B. Endomosis

C. Imbibition

D. Turgidity.

Answer: A



Watch Video Solution

27. Cell 'A' with $O.P = 10 \text{ atm}$ and $T.P. = 5 \text{ atm}$ is in contact with a cell 'B' having $O.P = 15 \text{ atm}$ and $T.P = 12 \text{ atm}$. The flow of water will be :

- A. From A to B
- B. Equal flow
- C. From B to A
- D. No flow

Answer: C



[Watch Video Solution](#)

28. Compared to 1M sucrose solution, the Ψ_w of 1M sodium chloride solution is

- A. High
- B. Same
- C. Lower

D. None of the above

Answer: C



Watch Video Solution

29. Guard cells differ from epidermal cells in having

A. Mitochondria

B. Vacuoles

C. Cell wall

D. Chloroplasts

Answer: D



Watch Video Solution

30. Active K^+ exchange mechanism for opening and closing of stomata was given by

- A. Darwin
- B. Levitt
- C. Scarth
- D. Khorana

Answer: B



[Watch Video Solution](#)

31. Wilting in plants occurs when

- A. Phloem is blocked
- B. Xylem is removed/blocked
- C. Pith is removed
- D. A few leaves are removed

Answer: B



[Watch Video Solution](#)

32. Guttation is the process of elimination of water from plants through

- A. Stomata
- B. Hydathodes
- C. Lenticels
- D. Wounds.

Answer: B



[Watch Video Solution](#)

33. Which of the following is used to determine the rate of transpiration in plants ?

A. Porometer/Hygrometer

B. Potometers

C. Auxanometer

D. Tensiometer/Barometer

Answer: B

 [Watch Video Solution](#)

34. What is the action spectrum of transpiration ?

A. Green and ultraviolet

B. Orange and red

C. Blue and far red

D. Blue and red

Answer: D

 [Watch Video Solution](#)

35. Water drops present on leaf margins of Tropaeolum, Balsam and grasses in early morning are due to

- A. Guttation
- B. Dew
- C. Osmosis
- D. Transpiration .

Answer: A



[Watch Video Solution](#)

36. Stomatal opening is under the control of

- A. Epidermal cells
- B. Palisade cells
- C. Spongy parenchyma cells

D. Guard cells

Answer: D



Watch Video Solution

37. Maximum transpiration takes place from

A. Stem

B. Leaves

C. Roots

D. Flowers and fruits

Answer: B



Watch Video Solution

38. In which type, the stomata are present exclusively on the upper surface of the leaves

- (a) Potato type
- (b) Potamogeton type
- (c) Barely type
- (d) Water Lily type

A. Potato type

B. Potamogeton type

C. Barely type

D. Water Lily type

Answer: D



[Watch Video Solution](#)

39. Number of stomata present per cm^2 of a common leaf is about

A. Less than 100

B. 1000 to 60000

C. 1 million

D. 10000

Answer: D



Watch Video Solution

40. Which is produced during water stress that brings about stomatal closure ?

A. Ethylene

B. Abscisic acid

C. Furolic acid

D. Coumarin.

Answer: B

 [Watch Video Solution](#)

41. In which of the following plants metabolism would be hindered if leaves are coated with vaseline on their upper surface ?

A. Hydrilla

B. Lotus

C. Pistia

D. Vallisneria

Answer: B

 [Watch Video Solution](#)

42. The following percentage of water absorbed by herbaceous plants is lost in transpiration

A. 80

B. 60

C. 99

D. 40

Answer: C



Watch Video Solution

43. Transpiration is least in

(a) Good soil moisture

(b) High wind velocity

(c) Dry environment

(d) High atmospheric humidity

A. Good soil moisture

B. High wind velocity

C. Dry environment

D. High atmospheric humidity.

Answer: D



Watch Video Solution

44. Transpiration is high under

- A. Rainy season/high humidity
- B. Winter
- C. High temperature
- D. Low wind velocity

Answer: C



Watch Video Solution

45. Potometer is a device used for measuring rate of

- A. Respiration

B. Transpiration

C. Growth

D. Photosynthesis

Answer: B



Watch Video Solution

46. Wilting appears due to excessive

A. Respiration

B. Photosynthesis

C. Absorption

D. Transpiration .

Answer: D



Watch Video Solution

47. Transpiration is regulated by movements of

- A. Guard cells
- B. Subsidiary cells
- C. Epidermal cells
- D. Mesophyll cells

Answer: A



[Watch Video Solution](#)

48. Transpiration differs from evaporation in

- A. Rate of water loss
- B. Transpiration is a physiological process while evaporation is a physical process

C. Transpiration is a physical process while evaporation is a physiological process

D. Frequency of water loss

Answer: B

 [Watch Video Solution](#)

49. Rate of transpiration is reduced with

A. Rise in temperature

B. Decrease in light intensity

C. Increase in wind velocity

D. Increase in water uptake .

Answer: B

 [Watch Video Solution](#)

50. Guttation is mainly due to

- A. Root pressure
- B. Osmosis
- C. Transpiration
- D. Imbibition

Answer: A



[Watch Video Solution](#)

51. Which one of the following plants keep its stomata open during the night and close during the day?

- A. Cactus
- B. Water Lily
- C. Ivy
- D. Hibiscus

Answer: A



Watch Video Solution

52. Which one gives the most valid and recent explanation for stomatal movements?

- A. Guard cells photosynthesis
- B. Starch hydrolysis theory
- C. Potassium influx and efflux
- D. Transpiration .

Answer: C



Watch Video Solution

53. The stomatal type of cereals which open only for a few hours during the day is

A. Barley type

B. Potato type

C. Alfalfa type

D. Bean type

Answer: A



Watch Video Solution

54. In most of the thin leaf mesophytes, the leaf stomata open during day and close night. It comes under

A. Barley type

B. Potato type

C. Alfalfa type

D. Bean type

Answer: C

 [Watch Video Solution](#)

55. Rate of transpiration is dependent upon

- A. Negative turgor pressure
- B. Temperature
- C. D.P.D.
- D. Vapour pressure deficit

Answer: D

 [Watch Video Solution](#)

56. On a hot summer day cooling of plant occurs due to

- A. Transport of water from root to all parts of the plant
- B. Loss of liquid water
- C. Water loss from entire plant

D. Loss of water vapours from foliar surface.

Answer: D



Watch Video Solution

57. Conversion of starch to organic acids is required for

A. Stomatal opening

B. Stomatal closing

C. Stomatal formation

D. Stomatal activity

Answer: A



Watch Video Solution

58. Element involved in stomatal regulation, its opening and closing is

A. Zinc

B. Magnesium

C. Potassium

D. Iron.

Answer: C



[Watch Video Solution](#)

59. At constant temperature, the rate of transpiration will be higher at

A. Sea level

B. 1 km below sea level

C. 1 km above sea level

D. 1.5 km above sea level

Answer: D



[Watch Video Solution](#)

60. In guard cells when sugar is converted into starch the stomatal pore

- A. Closes completely
- B. Opens partially
- C. Opens fully
- D. Remains unchanged

Answer: A



[Watch Video Solution](#)

61. Guttation occurs in well watered herbaceous plants of well drained soils during

- A. Evening
- B. Morning
- C. Day

D. Noon.

Answer: B



[Watch Video Solution](#)

62. Water will be absorbed by root hairs when the external medium is

A. Hypotonic

B. Hypertonic

C. Isotonic

D. Viscous.

Answer: A



[Watch Video Solution](#)

63. Root hairs are found in the zone of :

- A. Cell division
- B. Cell elongation
- C. Cell maturation
- D. Mature cells

Answer: C

 [Watch Video Solution](#)

64. Root cap has no role in water absorption because

- A. It has no direct connection with the vascular system
- B. It has loosely arranged cells
- C. It has no cells containing chloroplasts
- D. It has no root hairs

Answer: B

 [Watch Video Solution](#)

65. Root pressure is maximum when

- A. Water absorption as well as transpiration are low
- B. Both water absorption and transpiration are high
- C. Absorption is low and transpiration is high
- D. Absorption is high and transpiration is low

Answer: D



[Watch Video Solution](#)

66. Path of water movement from soil to exarch xylem is

- A. Metaxylem \Rightarrow Protoxylem \Rightarrow Cortex \Rightarrow Soil \Rightarrow Root hair
- B. Cortex \Rightarrow Root hair \Rightarrow Endodermis \Rightarrow Pericycle \Rightarrow Protoxylem
 \Rightarrow Metaxylem

C. Soil \Rightarrow Root hair \Rightarrow Cortex \Rightarrow Endodermis \Rightarrow Pericycle \Rightarrow

Protoxylem \Rightarrow Metaxylem

D. Pericycle \Rightarrow Soil \Rightarrow Root hair \Rightarrow Cortex \Rightarrow Endodermis \Rightarrow

protoxylem \Rightarrow Metaxylem.

Answer: C



Watch Video Solution

67. Which fraction of soil water is available to plants for absorption by roots ?

A. Gravitational water

B. Capillary water

C. Hygroscopic water

D. Combined water

Answer: B

 [Watch Video Solution](#)

68. Rate of water absorption can be increased through

- (a) Decreased transpiration
- (b) Decreased ion absorption
- (c) Increased photosynthesis
- (d) Increased transpiration

- A. Decreased transpiration
- B. Decreased ion absorptiion
- C. Increased photosynthesis
- D. Increased transpiration

Answer: D

 [Watch Video Solution](#)

69. Water in plants is transported by or ascent of sap take place through

A. Cambium

B. Phloem

C. Xylem

D. Epidermis

Answer: C



[Watch Video Solution](#)

70. The most widely accepted theory of ascent of sap in trees is

A. Capillarity

B. Role of atmospheric pressure

C. Pulsating action of living cell

D. Transpiration pull and cohesion theory of Dixon and Joly

Answer: D



[Watch Video Solution](#)

71. Water rises in the stem due to

- A. Cohesion and transpiration pull
- B. Turgor pressure
- C. Osmotic Pressure
- D. None of the above

Answer: A



[Watch Video Solution](#)

72. According to one vital force theory, ascent of sap is due to active pulsation of innermost layer of cortex. This theory was given by

or

In plant 'transpiration pull' theory for ascent of sap was first proposed by

- (a) J.C. Bose
- (b) Dixon

(c) Strasburger

(d) Sachs

A. J.C. Bose

B. Dixon

C. Strasburger

D. Sachs .

Answer: A



Watch Video Solution

73. At what time, the stomatal transpiration is completely stopped

A. Morning

B. Night

C. Evening

D. None of the above

Answer: B



[Watch Video Solution](#)

74. Upward movement of water through xylem is best explained by

- (a) Cohesion theory
- (b) Pulsation theory
- (c) Capillarity theory
- (d) Root pressure theory

A. Cohesion theory

B. Pulsation theory

C. Capillarity theory

D. Root pressure theory

Answer: A



[Watch Video Solution](#)

75. The principal pathway of water translocation in angiosperms is

- A. Sieve cells
- B. Sieve tube elements
- C. Xylem vessel system
- D. Xylem and phloem

Answer: C



Watch Video Solution

76. The cohesive force of water is due to

- A. O-bonds
- B. OH-bonds
- C. S-bonds
- D. H-bonds

Answer: D



[Watch Video Solution](#)

77. When phloem is removed by girdling

- A. Harting
- B. Strasburger
- C. Godlewski
- D. Bose

Answer: A



[Watch Video Solution](#)

78. During osmosis, flow of water through a semipermeable membrane is

- A. From Low Ψ_w To High Ψ_w

- B. From To
(C) High Solution concentration *Low solution concentration*
- C. From To
(C) High Ψ_s Low Ψ_s
- D. From To
(C) Hypotonic Solution Hypertonic solution

Answer: D



[Watch Video Solution](#)

79. Diffusion of water through selectively permeable membrane is

- A. Diffusion
- B. Imbibition
- C. Osmosis
- D. Translocation

Answer: C



[Watch Video Solution](#)

80. A higher plant cell covered with cutin and suberin is placed in water.

After 15 minutes, the cell

- A. Will be killed
- B. Size will increase
- C. Size will remain unchanged
- D. Size will decrease

Answer: C



Watch Video Solution

81. Water is absorbed from outside solution only when it is

- A. Isotonic
- B. Hypotonic
- C. Hypertonic
- D. None of the above

Answer: B



Watch Video Solution

82. Supply of excess fertilizer and watering of a grass lawn causes browning of grass leaves due to

- A. Decreased photosynthesis
- B. Water-logging of soil
- C. Leaching of fertilizer to lower soil strata
- D. Osmosis and death of root .

Answer: D



Watch Video Solution

83. During water absorption by roots , water potential of cell sap is lower than that of

- A. Pure water and soil solution
- B. Neither pure water nor soil solution
- C. Pure water but higher than that of soil solution
- D. Soil solution but higher than that of pure water

Answer: A

 [Watch Video Solution](#)

84. Comment upon the following :

When a plant cell is kept in hypertonic solution, it becomes flaccid.

- A. Lysed
- B. Turgid
- C. Deplasmolysed
- D. Plasmolysed

Answer: D

 [Watch Video Solution](#)

85. 0.1 M solution of a solute has a water potential of

- A. -2.3 bars
- B. Zero
- C. 2.3 bars
- D. 22.4 bars

Answer: A

 [Watch Video Solution](#)

86. The movement of free atoms from higher concentration to lower concentration is called

- A. Osmosis
- B. Diffusion

C. Endosmosis

D. Exosmosis

Answer: B



[Watch Video Solution](#)

87. In seed germination the first to occur is

A. Diffusion

B. Osmosis

C. Imbibition

D. All the above

Answer: C



[Watch Video Solution](#)

88. Plasmolysis is due to

- A. Exosmosis
- B. Endosmosis
- C. Osmosis
- D. Adsorption

Answer: A



[Watch Video Solution](#)

89. Mango dipped in concentrated NaCl solution will

- A. Burst
- B. Contract
- C. Swell
- D. No effect

Answer: B



Watch Video Solution

90. Cotton fibres dipped in water absorb water through

- A. Endosmosis
- B. Exosmosis
- C. Capillarity
- D. Imbibition

Answer: C



Watch Video Solution

91. A cell placed in a solution get deplasmolysed . The solution is

- A. Hypotonic

B. Hypertonic

C. Isotonic

D. Ditonic

Answer: A



Watch Video Solution

92. In the process of osmosis, volume of solvent

A. Decrease

B. Increase

C. Remain constant

D. Volume has no relation to osmosis

Answer: B



Watch Video Solution

93. The term water potential was coined by

A. Sayre

B. Von Mohl

C. Lloyd

D. Slatyer and Taylor

Answer: D



Watch Video Solution

94. Water potential of a solution is depicted by

A. Ψ_p

B. Ψ_w

C. Ψ_x

D. $\Delta\Psi$

Answer: B



Watch Video Solution

95. Endosmosis of water occurs when water potential of the cell sap is

A. Higher

B. Equal

C. Lower

D. None of the above

Answer: C



Watch Video Solution

96. If turgidity of a cell surrounded by water increases, the wall pressure will

- A. Decrease
- B. Increase
- C. Fluctuate
- D. Remain unchanged

Answer: B

 [Watch Video Solution](#)

97. Cut flowers are dipped basally in dilute sodium chloride solution to

- A. Reduce bacterial growth
- B. Reduce transpiration
- C. Induce endosmosis
- D. Increase solute inside flowers

Answer: B

 [Watch Video Solution](#)

98. "Osmosis is flow of solution from higher concentration to solution of lower concentration through semi-permeable membrane" What is incorrect in the statements ?

- A. Exact concentration of solution is not given
- B. Character of semipermeable membrane is not given
- C. Flow of solution is not possible through semipermeable membrane
- D. All the above

Answer: C

 [Watch Video Solution](#)

99. Stomata generally open during the day because the guard cells have

- A. Outer thin wall
- B. Chlorophyll

C. Kidney-shape

D. Larger nuclei

Answer: B



Watch Video Solution

100. Which of the following is an effective adaptation for better gas exchange in plants ?

A. Hair on lower surface

B. Multiple epidermis

C. Waxy cuticle

D. Stomata on lower surface away from direct sun rays .

Answer: D



Watch Video Solution

101. Transpiration is helpful to plants in

- A. Cooling
- B. Loss of excess nutrients
- C. Upward conduction/ascent of sap
- D. Loss of excess water.

Answer: C



Watch Video Solution

102. Temporary wilting is due to

- A. Photosynthesis
- B. Transpiration
- C. Respiration
- D. Absorption of water

Answer: B



[Watch Video Solution](#)

103. Stomata open when guard cells:

- A. Less K^+
- B. More ABA
- C. More K^+
- D. All the above

Answer: C



[Watch Video Solution](#)

104. An antitranspirant is

- A. Cobalt chloraldehyde

B. Mercury

C. Potassium

D. Phenyl mercuric acetate.

Answer: D



Watch Video Solution

105. Which of the following factors is most important in regulation of transpiration?

(a) Relative humidity

(b) Temperature

(c) Light

(d) Wind

A. Relative humidity

B. Temperature

C. Light

D. Wind.

Answer: B



Watch Video Solution

106. Transpiration is dependent upon

- A. Difference of vapour pressure
- B. Degree of stomatal opening
- C. Availability of green light.
- D. Both A and B.

Answer: D



Watch Video Solution

107. Plant cooling occurs due to

- A. Assimilation
- B. Guttation
- C. Photorespiration
- D. Transpiration

Answer: D

 [Watch Video Solution](#)

108. High CO_2 concentration in leaf interior will cause

- A. Stomatal opening
- B. Stomatal closure
- C. No effect on stomata
- D. Stomata are destroyed .

Answer: B

 [Watch Video Solution](#)

109. Water exudation through hydathodes is

- A. Guttation
- B. Transpiration
- C. Hydrolysis
- D. Excretion

Answer: A



Watch Video Solution

110. Hydathodes occur on

- A. Stem
- B. Leaves
- C. Roots

D. All the above

Answer: B



[Watch Video Solution](#)

111. Water potential in leaf tissue is 'positive' (near zero) during

A. Low transpiration

B. Excessive absorption

C. Excessive transpirants

D. Guttation.

Answer: D



[Watch Video Solution](#)

112. A leafy twig of mesophytic plant dipped in water would demonstrate

A. Photosynthesis

B. Transpiration

C. Respiration

D. Guttation.

Answer: B



[Watch Video Solution](#)

113. Which is not related to transpiration ?

A. Absorption and distribution of minerals

B. Circulation of water

C. Temperature

D. Bleeding

Answer: D



[Watch Video Solution](#)

114. The loss of water through cuticle reaches upto

- A. 5 %
- B. 10 %
- C. 20 %
- D. 40 %

Answer: D



Watch Video Solution

115. Phytohormone connected with closing of stomata is

- A. ABA
- B. Kinetin
- C. GA

D. IBA.

Answer: A



[Watch Video Solution](#)

116. A twig kept in water having some salt remains fresh for longer period due to

- A. Decrease in bacterial degradation
- B. Exosmosis
- C. Decrease in transpiration rate
- D. Absorption of more water

Answer: C



[Watch Video Solution](#)

117. Root pressure is caused by:

- A. Active absorption/transport
- B. passive absorption/transport
- C. Increased transpiration
- D. Increased photoxynthesis

Answer: A



Watch Video Solution

118. The movement of water from one cell of the cortex to the adjacent one in roots is due to

- A. Water potential gradient
- B. Chanical potential graient
- C. Accumulation of inorganic salts in the cells
- D. Accumulation of organic salts in the cells

Answer: A



[Watch Video Solution](#)

119. Exudation of xylem sap on cutting of a shoot is due to

- A. Guttation
- B. Root pressure
- C. Transpiration
- D. None of the above

Answer: B



[Watch Video Solution](#)

120. Water entering the root due to diffusion is part of

- A. Endocytosis

B. Osmosis

C. Passive absorption

D. Active absorption

Answer: C



Watch Video Solution

121. Water absorbed by root in order to meet the requirement of transpiration is due to

A. Transpiration pull

B. Osmosis

C. Imbibition

D. Plasmolysis

Answer: B



Watch Video Solution

122. The root hairs absorb from soil

- A. Turgor pressure
- B. Ion exchange
- C. Osmosis
- D. DPD.

Answer: C



Watch Video Solution

123. Prolonged water-logging kills plant due to

- A. Stoppage of root respiration
- B. Dilution of soil nutrients
- C. Dilution of plant cell sap
- D. Leaching of nutrients .

Answer: A



Watch Video Solution

124. Rate of water absorption is slow near freezing point because

- A. Water absorption is a metabolic process
- B. Cell growth stops
- C. Transpiration is reduced
- D. Cell membranes become more viscous.

Answer: D



Watch Video Solution

125. Water ascends in plants through

- A. Xylem

B. Phloem

C. Stele

D. Pith.

Answer: A



Watch Video Solution

126. Cohesion/transpiration pull theory of ascent of sap was proposed by

A. Munch

B. Stephen Hales

C. Dixon and Joly

D. Bose

Answer: C



Watch Video Solution

127. The force responsible for raising water in 100 ft tall plant is

- A. Transpiration pull
- B. Root pressure
- C. Air pressure
- D. Capillary action.

Answer: A



Watch Video Solution

128. Ascent of sap is

- A. Cohesion-tension theory of Dixon and Joly
- B. Starch-Sugar interconversion
- C. Photosynthesis
- D. None of the above

Answer: A



[Watch Video Solution](#)

129. Water supply in the plant is due to

- A. Osmosis
- B. Guttation
- C. Cohesion force
- D. Imbibition

Answer: C



[Watch Video Solution](#)

130. The principle by which blotting paper absorbs water is

- (a) Capillary action
- (b) Transpiration pull

(c) Root pressure

(d) Absorptive capacity

A. Capillary action

B. Transpiration pull

C. Root pressure

D. Absorptive capacity

Answer: A



Watch Video Solution

131. If cohesion-tension transpiration pull theory is correct, a break in water column should

(a) Increase water content of leaves

(b) Increase rate of photosynthesis

(c) Cause wilting of leaves

(d) Have no effect at all

- A. Increase water content of leaves
- B. Increase rate of photosynthesis
- C. Cause wilting of leaves
- D. Have no effect at all

Answer: C



Watch Video Solution

132. Plant cells dipped in distilled water will become

- (a) Turgid
- (b) Plasmolysed
- (c) Flaccid
- (d) Impermeable

- A. Turgid
- B. Plasmolysed
- C. Flaccid

D. Impermeable

Answer: A



[Watch Video Solution](#)

133. To initiate cell plasmolysis, salt solution should be

A. Isotonic

B. Hypotonic

C. Hypertonic

D. None of the above

Answer: C



[Watch Video Solution](#)

134. Water potential and osmotic potential of pure water are respectively

A. Zero and zero

B. 100 and zero

C. 100 and 100

D. Zero and 100

Answer: A



Watch Video Solution

135. If a cell A with OP 10 bars and TP 4 bars is connected to cells, B, C and D having OP and TP respectively 4 and 4, 10 and 5 and 7 and 3 bars, the flow of water will be

A. C to A, B and D

B. B to A, C and D

C. A to D, B and C

D. A to B, C and D

Answer: B



[Watch Video Solution](#)

136. Excessive supply of chemical fertilizers often causes wilting/death of crop plant due to

- A. Endosmosis
- B. Exosmosis
- C. Imbibition
- D. None of the above

Answer: B



[Watch Video Solution](#)

137. Osmotic potential is depicted as

A. (-)

B. (+)

C. (X)

D. (÷)

Answer: A



Watch Video Solution

138. Potato slices were placed in sucrose solution . After half an hour, density of sucrose solution increased . Water potential of Pototo tuber is

A. Equal to solute potential of sucrose solution

B. Greater then sloute potential of sucrose solutioin

C. Less then solute potential of sucrose solution

D. Half the concentration of sucrose solution

Answer: C

 [Watch Video Solution](#)

139. A cell will become fully turgid if it is placed in

- A. Hypotonic solution
- B. Isotonic solution
- C. Hypertonic solution
- D. All the above

Answer: A

 [Watch Video Solution](#)

140. Dry wooden stakes in cracks of a rock and soaked will develop pressure that will split the rock. The phenomenon is

- A. Osmotic pressure
- B. Imbibition

C. Turgor pressure

D. Deplasmolysis

Answer: B



Watch Video Solution

141. Cells absorb water through

A. Osmosis only

B. Imbibition only

C. Both osmosis and imbibition

D. None of the above

Answer: C



Watch Video Solution

142. In plasmolysis, a plant cell

- A. Swells up
- B. Bursts
- C. Becomes flaccid
- D. Becomes turgid

Answer: C



Watch Video Solution

143. A cell placed in hypotonic solution will

- A. Shrink
- B. Show exosmosis
- C. Show endosmosis
- D. No change in shape or size .

Answer: C



Watch Video Solution

144. A plant cell shrinks when it is kept in a

A. Isotonic

B. Hypotonic

C. Hypertonic

D. None of the above

Answer: C



Watch Video Solution

145. Assertion : Shrinkage of the protoplast of a cell occurs under the influence of hypertonic solution.

Reason : Hypertonic solution causes plasmolysis.

A. plasmolysis

B. Apoptosis

C. Deplasmolysis

D. Flaccidity

Answer: A



[Watch Video Solution](#)

146. Wooden doors swell up and get stuck during rainy season due to

A. Endosmosis

B. Imbibition

C. Capillarity

D. Exosmosis

Answer: B



[Watch Video Solution](#)

147. In plant water moves from

- A. Less negative to more negative gradient
- B. More negative to less negative gradient
- C. Similar gradient
- D. Zero gradient

Answer: A



[Watch Video Solution](#)

148. Osmosis is the passage of water through a semipermeable membrane from

- A. Wall pressure
- B. Suction pressure
- C. Osmotic pressure

D. Turgor pressure .

Answer: D



[Watch Video Solution](#)

149. Adding solution to pure water will cause development of

- A. Positive water potential
- B. More Positive water potential
- C. More negative water potential
- D. Negative water potential

Answer: D



[Watch Video Solution](#)

150. Lose of water from tips of leaves is

A. Transpiration

B. Guttation

C. Bleeding

D. Respiration

Answer: B



[Watch Video Solution](#)

151. Maximum transpiration occurs in

A. Algal cells

B. Xerophytic plants

C. Hydriophytic plants

D. Mesophytic plants

Answer: D



[Watch Video Solution](#)

152. Nonfunctional stomata can be seen in

- A. mango leaf
- B. Pea leaves
- C. Hydrilla
- D. Lotus

Answer: C



[Watch Video Solution](#)

153. Which of the following theory gives the latest explanation for closure of stomata?

- A. Starch glucose theory
- B. Active K^+ ions theory
- C. ABA theory

D. None of the above

Answer: C



[Watch Video Solution](#)

154. When half the leaves are removed randomly, transpiration will show

- A. Higher magnitude but lower flux or rate per unit
- B. Lower magnitude but higher flux
- C. Both magnitude and flux increase
- D. Both magnitude and flux decrease .

Answer: B



[Watch Video Solution](#)

155. Transpiration is a necessary evil in plants. Explain

A. Bose

B. Steward

C. Anderson

D. Curtis

Answer: D



[Watch Video Solution](#)

156. Rate of transpiration is related to

A. Light and temperature

B. Light, temperature , atmospheric humidity and wind

C. Light , temperature and wind

D. Soil and temperature

Answer: B



[Watch Video Solution](#)

157. Enzyme connected with opening and closing of stomata is

- A. α -amylase
- B. Pyruvic kinase
- C. PEP carboxylase
- D. RuDP carboxylase

Answer: C



Watch Video Solution

158. Rate of transpiration is highest when

- A. Soil is wet and air is dry
- B. Soil is wet and air is humid
- C. Soil is dry and air is humid

D. Both soil and air are dry

Answer: A



[Watch Video Solution](#)

159. An internal factor in transpiration is

A. CO_2

B. O_2

C. N_2

D. Stomata

Answer: D



[Watch Video Solution](#)

160. Root pressure is a

- A. Pumping food in phloem
- B. Pumping sap into xylem in roots
- C. Pumping sam in stem for sending it to roots
- D. All the above

Answer: B

 [Watch Video Solution](#)

161. [A]: Stomata remain open during day

[R]: Stomata help in gaseous exchange.

- A. Point out if both are true with reason being correct explanation (A),
- B. assertion is true but correct explanation (B),
- C. Assertion is true but reason is wrong (C)
- D. And both are wrong (D)

Answer: B

 [Watch Video Solution](#)

162. Match the columns

| Column I | Column II |
|---------------------------------------|--|
| <i>a</i> Girdling | <i>p</i> Ascent of sap |
| <i>b</i> Cobalt chloride paper method | <i>q</i> Transpiration |
| <i>c</i> Atmometer | <i>r</i> Unequal transpiration on two surfaces |
| <i>d</i> Ball jar experiment | <i>s</i> Translocation in phloem |

A. $a - s, b - p, c - q, d - r$

B. $a - s, b - r, c - p, d - q$

C. $a - q, b - p, c - s, d - r$

D. $a - r, b - p, c - s, d - q$

Answer: B

 [Watch Video Solution](#)

163. A sudden increase in carbon dioxide concentration around a leaf will cause

- A. Wider opening
- B. Increase in transpiration
- C. Closure in stomata
- D. Decrease in transpiration due to closure of stomata

Answer: D

 [Watch Video Solution](#)

164. Changes in turgidity of guard cells are controlled by

- A. Potassium
- B. Chloride
- C. Malic acid
- D. All the above

Answer: D

 [Watch Video Solution](#)

165. Rate of transpiration is high in

- A. C_3 plants
- B. C_4 plants
- C. CAM plants
- D. Both C_3 and C_4 plants

Answer: A



[Watch Video Solution](#)

166. Plants exchange water with environment through structures by two cells

- A. Lenticels
- B. Hydathodes
- C. Stomata

D. All the above

Answer: C



Watch Video Solution

167. Arrange root hair cell, inner cortical cell and mesophyll cell in ascending order of DPD.

- (a) Mesophyll cell, Root hair cell and Cortical cell
 - (b) Cortical cell, Mesophyll cell and Root hair
 - (c) Root hair cell , Cortical cell and Mesophyll cell
 - (d) Root hair cell, Mesophyll cell and Cortical cell
-
- A. Mesophyll cell, Root hair cell and Cortical cell
 - B. Cortical cell, Mesophyll cell and Root hair
 - C. Root hair cell , Cortical cell and Mesophyll cell
 - D. Root hair cell, Mesophyll cell and Cortical cell

Answer: C



[Watch Video Solution](#)

168. In root hair, water enters due to

- A. Diffusion
- B. W.P.
- C. T.P.
- D. O.P.

Answer: D



[Watch Video Solution](#)

169. The direction of water in the leaflets of *Cycas* from midrib is

- A. Upward
- B. Downward
- C. Lateral

D. Both A and B.

Answer: C



[Watch Video Solution](#)

170. Sir J.C. Bose proposed in theory of ascent of sap known as

- A. Pulsation theory
- B. Transpiration pull theory
- C. Relay pump theory
- D. Capillary force theory

Answer: A



[Watch Video Solution](#)

171. Cohesion-tension theory is related to

A. Respiration

B. Ascent of sap

C. Transpiration

D. Photosynthesis

Answer: B



[Watch Video Solution](#)

172. A cell kept in a solution increases in volume. The solution is

A. Hypotonic

B. Isotonic

C. Hypertonic

D. Either A or B

Answer: A



[Watch Video Solution](#)

173. Guttation is due to

- A. Negation root pressure
- B. Positive roots pressure
- C. Transpiration
- D. None of the above

Answer: B



Watch Video Solution

174. Which of the following is an epidermal cell containing chloroplast ?

- A. Hydathodes
- B. Accessory cells
- C. Stomata

D. Guard cells

Answer: D



[Watch Video Solution](#)

175. Each stoma is surrounded by

A. passage cells

B. Guard cells

C. Parenchyma cells

D. Lenticels

Answer: B



[Watch Video Solution](#)

176. Which one is correct

$$A. \Psi_m = \Psi_p + \Psi_s + \Psi_\omega$$

$$B. \Psi_\omega = \Psi_p + \Psi_s + \Psi_m$$

$$C. \Psi_p = \Psi_\omega + \Psi_m + \Psi_s$$

$$D. \Psi_\omega = \Psi_\omega + \Psi_p + \Psi_p + \Psi_s$$

Answer: B

 [Watch Video Solution](#)

177. Match the columns and find the correct combination

Column I

Column II

- | | |
|--------------------------------|-------------------------------------|
| <i>a</i> Ganong's Potometer | (i) Rate of growth |
| <i>b</i> Cobalt chloride paper | (ii) Rate of transpiration |
| <i>c</i> Pfeffer's auxanometer | (iii) Differential transpiration |
| <i>d</i> Porometer | (iv) Opening and closing of stomata |

A. (a) - (i), (b) - (ii), (c) - (iii), (d) - (iv)

B. (a) - (iv), (b) - (i), (c) - (iii), (d) - (ii)

C. (a) - (ii), (b) - (iii), (c) - (i), (d) - (iv)

D. (a) - (iii), (b) - (i), (c) - (iv), (d) - (ii)

Answer: C



Watch Video Solution

178. Find the correct order for instrument used for measuring (i) Transpiration (ii) Size of stomata (iii) Atmospheric pressure (iv) Osmosis

A. Potometer, manometer, porometer, osmometer

B. Manometer, potometer, porometer, osmometer

C. Porometer, manometer, potometer, osmometer

D. Potometer, porometer, manometer, osmometer.

Answer: D



Watch Video Solution

179. Chlorophyllous cells fewer in number, unique shape with inner walls thicker are

- A. Guard cells
- B. Passage cells
- C. Subsidiary cells
- D. Bulliform cells

Answer: A

 [Watch Video Solution](#)

180. Water lost through transpiration is

- A. Pure water
- B. Rich in organic solutes
- C. Rich in dissolved salts
- D. All the above

Answer: A

 [Watch Video Solution](#)

181. Common between guard cells and mesophyll cells is

- A. Dumbell shaped
- B. Differentially thick walls
- C. Presence of chloroplasts
- D. Uniformly thin cell wall .

Answer: C



Watch Video Solution

182. A leaf with more stomata on lower surface belongs to

- A. Potato type
- B. Oat type
- C. Apple-mulberry type

D. Nymphaea type

Answer: A



[Watch Video Solution](#)

183. Main function of lenticel is

A. Transpiration

B. Guttation

C. Bleeding

D. Gaseous exchange .

Answer: D



[Watch Video Solution](#)

184. Which factor is most important in regulating transpiration ?

A. Light

B. Temperature

C. Humidity

D. Wind.

Answer: B



Watch Video Solution

185. Epidermal is associated with

A. Respiration

B. Guttation

C. Transpiration

D. Photosynthesis

Answer: B



Watch Video Solution

186. Stomata open during day due to

- A. Accumulation of K^{+} ion and sugar
- B. High pH
- C. Osmotic effect of ions present in guard cells
- D. None of the above

Answer: A



[Watch Video Solution](#)

187. Choose the correct sequence of events during wilting

- A. Exosmosis, deplasmolysis, temporary wilting , permanent wilting
- B. Exosmosis, plasmolysis temporary, wilting , permanent wilting
- C. Endosmosis, plasmolysis temporary wilting, permanent wilting

D. Exosmosis,deplasmolysis, plasmolysis, temporary wilting,
permanent wilting.

Answer: B



Watch Video Solution

188. Which can preserve food stuff ?

- (a) Sugar and vinegar
- (b) Salt and sugar
- (c) Vinegar
- (d) All the above

A. Sugar and vineger

B. Salt and suger

C. Vinegar

D. All the above

Answer: D



[Watch Video Solution](#)

189. If turgor pressure becomes equal to osmotic pressure

- A. Water leaves the cells
- B. Water enters the cell
- C. No exchange of water takes place
- D. Solute pass out of the cell

Answer: C



[Watch Video Solution](#)

190. Risk of spoilage is less in salted pickles as it causes

- A. Guttation
- B. Imbibition
- C. Diffusion

D. Plasmolysis

Answer: D



Watch Video Solution

191. Solution A has $\Psi_s = -30$ bars and $\Psi_p = 5$ bars. Solution B has $\Psi_s = -10$ bars and $\Psi_p = 0$ atm. The two are separated by semipermeable membrane . Flow of water will be

- (a) B to A
- (b) A to B
- (c) Equal in both directions
- (d) No flow of water

A. B to A

B. A to B

C. Equal in both directions

D. No flow of water .

Answer: A



Watch Video Solution

192. Amount by which water potential is reduced due to presence of solute is called

- A. Pressure potential
- B. Solute potential
- C. Mateic potential
- D. None of the above

Answer: B



Watch Video Solution

193. Uniformly sweet taste of Tea or Coffee is due to

- A. Spreading
- B. Osmosis
- C. Permeability
- D. Diffusion

Answer: D

 [Watch Video Solution](#)

194. Exchange of substances between a cell and its environment is due to

- A. Osmosis
- B. Active transport
- C. Diffusion
- D. All the above

Answer: D

 [Watch Video Solution](#)

195. Turgor pressure develops in epiblema cells of root due to

- A. High water potential of cortical cells
- B. Entry of water into root hairs and increase in volume of cell sap
- C. Filling of large vacuole in root hair with cell sap
- D. Osmotic diffusion of water into pericycle through passage cells

Answer: B



Watch Video Solution

196. Root hairs absorb water from soil due to

- (a) Osmotic pressure
- (b) Turgor pressure
- (c) Suction pressure
- (d) Root pressure

A. Osmotic pressure

B. Turgor pressure

C. Suction pressure

D. Root pressure

Answer: C



Watch Video Solution

197. Which is not associated with ascent of sap in tall trees

A. Continuity of water column

B. Cohesion and adhesion of water molecules

C. Transpiration pull

D. Pressure of tracheary elements

Answer: D



Watch Video Solution

198. Cohesion force existing amongst water molecules contributes to

- (a) plasmolysis
- (b) Ascent of sap
- (c) Osmosis
- (d) Translocation

A. plasmolysis

B. Ascent of sap

C. Osmosis

D. Translocation

Answer: B



Watch Video Solution

199. Ascent of sap is

A. Sachs

B. Christian Wolf

C. Strasburger

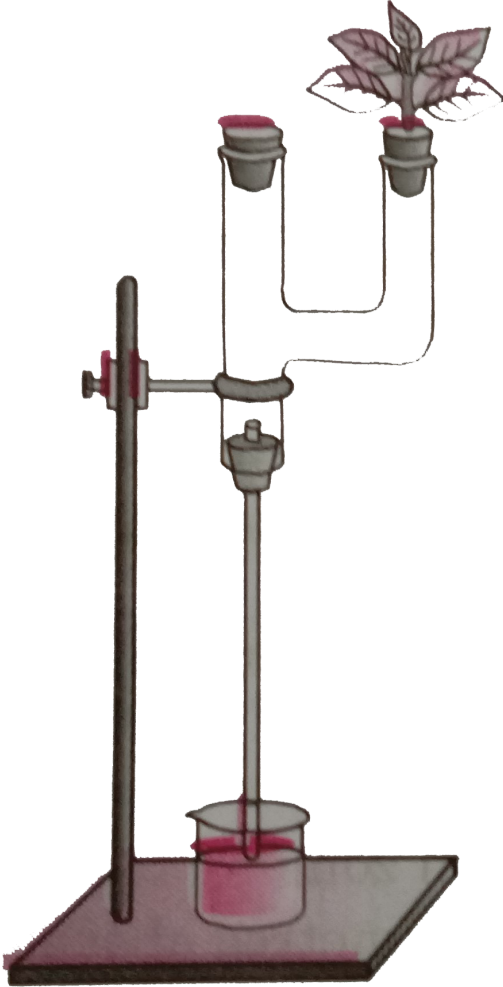
D. Dixon and Joly

Answer: B



Watch Video Solution

200. The experiment set up shown in the adjacent diagram is for



A. (a) The demonstration of development of suction force due to transpiration

B. (b) Measuring the rate of transpiration

C. (c) The demonstration of ascent of sap

D. (d) The demonstration of anaerobic respiration

Answer: B



[Watch Video Solution](#)

201. When the concentraion of solution is greater outside the cells then inside the cells,the solution outside the cells is

A. Isotonic

B. Hypertonic

C. Hypotonic

D. None of the above

Answer: B



[Watch Video Solution](#)

202. Stomata of CAM plants

- A. Are always open
- B. Open during the day and close at night
- C. Open during night and close during the day
- D. Never open

Answer: C

 [Watch Video Solution](#)

203. Stomata of a plant open due to : -

- A. Influx of potassium ions
- B. Efflux of potassium ions
- C. Influx of hydrogen ions
- D. Influx of calcium ions

Answer: D



[Watch Video Solution](#)

204. Osmotic pressure of a solution is

- A. More than that of pure solvent
- B. Less than that of pure solvent
- C. Variable depending upon concentration
- D. Equal to that of pure solvent

Answer: A



[Watch Video Solution](#)

205. If a cell A has DPD of 4 bars, it is connected to cell B,C,D whose OP and TP are 4 and 4, 10 and 5, 10 and 3 bars . The flow of water will be

A. D

B. C

C. B

D. A.

Answer: A



Watch Video Solution

206. Pea seeds absorb more water and swell up more as compared to Paddy seeds due to

A. Higher imbibition by proteins present in Pea seeds

B. High osmotic potential of Pea seeds

C. Paddy covering is impermeable to water

D. All the above

Answer: A

 [Watch Video Solution](#)

207. Root pressure is a

- A. At the tip
- B. Transition zone
- C. A few centimetres above the soil
- D. A few centimetres below the soil .

Answer: C

 [Watch Video Solution](#)

208. Which one is against the theory of ascent of sap by Dixon and Jolly

- A. Pores in tracheary elements
- B. Cohesion force of water molecules
- C. Adhesion force of water molecules

D. Requirement of ATP

Answer: D



[Watch Video Solution](#)

209. An adaptation to reduce transpiration is

- (a) Spongy parenchyma
- (b) Sunken stomata
- (c) Hydathodes
- (d) Aerenchyma

A. Spongy perenchyma

B. sunken stomata

C. Hydathodes

D. Aeremchyma

Answer: B



[Watch Video Solution](#)

210. Rate of transpiration higher than rate of water absorption shall cause

- A. Growth
- B. Leaf fall
- C. Wiling
- D. Death

Answer: C



[Watch Video Solution](#)

211. Plants loose most of water through leaves by

- A. Respiration
- B. Guttation

C. Photosynthesis

D. Transpiration

Answer: D



[Watch Video Solution](#)

212. Presence of moisture in the atmosphere

A. Increases rate of transpiration

B. Decreases rate of transpiration

C. Does not affect rate of transpiration

D. Transpiration becomes rapid

Answer: B



[Watch Video Solution](#)

213. Stomata close in response to

- A. Hot dry weather
- B. Abscisic acid
- C. Cytokinin
- D. Both A and B.

Answer: D



Watch Video Solution

214. Water potential is maximum in case of

- A. Pure water
- B. 2 % glucose
- C. 10 % glucose
- D. 10 % NaCl

Answer: A



[Watch Video Solution](#)

215. Which one is not connected with transport across the cell membrane

- A. Osmosis
- B. Active transport
- C. Diffusion
- D. Surface tension

Answer: D



[Watch Video Solution](#)

216. Entry of water into a cell causes swelling of protoplast due to

- (a) DPD
- (b) Osmotic pressure

(c) Imbibition

(d) Turgor pressure

A. DPD

B. Osmotic pressure

C. Imbibition

D. Turgor pressure .

Answer: D



Watch Video Solution

217. Wilting occurs when

A. Transpiration higher then absorption

B. Absorption higher then transpiration

C. Higher relative humidity of atmosphere

D. Excess root pressure

Answer: D



Watch Video Solution

218. A plant cell attains turgidity due to:

A. Plasmolysis

B. Exosmosis

C. Endosmosis

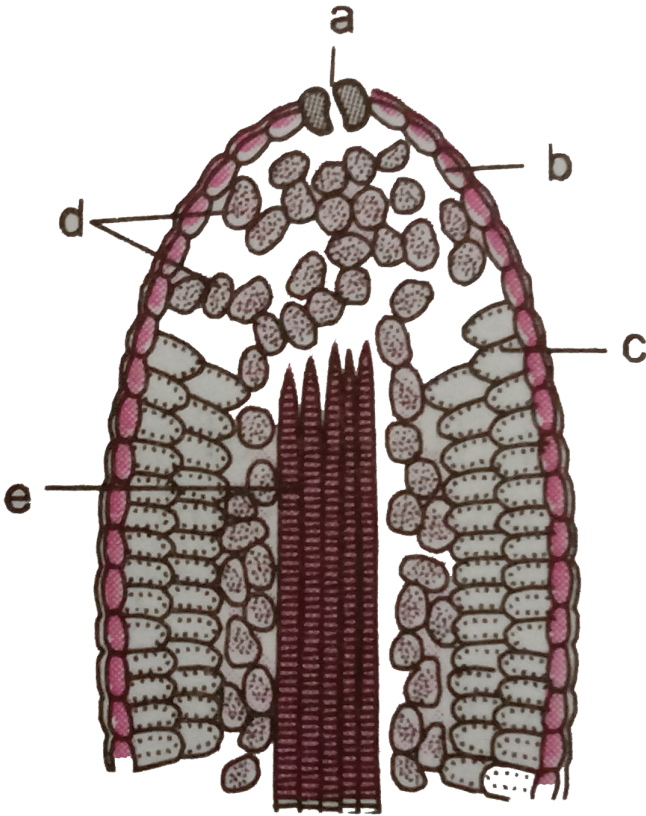
D. Electrolysis.

Answer: A



Watch Video Solution

219. Figure of hydathode has a labelling. What is correct

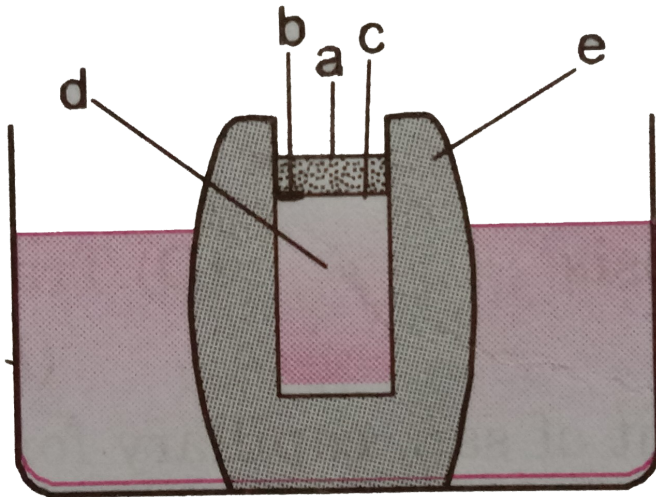


- A. a- guard cell, b-epithem, c-mesophyll, d-epidermis , e- vascu - lature
- B. a- guard cell, b-epidermis , c-mesophyll, d-epithem , e- vascu - lature
- C. a- water pore , b-epidermis , c-mesophyll, d-epithem , e- vasculature
- D. a- ostiole , b-epidermis , c-mesophyll, d-epithem , e- vasculature

Answer: C

 Watch Video Solution

220. Choose the correct combination of labelling in Potato osmoscope



- A. a - final level, b - dot pin, c - initial level, d - Sugar solution, e - Potato tuber .
- B. a - initial level, b - dot pin, c - final level, d - water, e - potato tuber
- C. a - final level, b - dot pin, c - initial level, d - water, e - potato tuber
- D. a - final level, b - dot pin, c - initial level, d - water , e - container .

Answer: A



Watch Video Solution

221. Match the columns and identify the correct combination

I

- a* Mass flow hypothesis
- b* Relay pump theory
- c* Transpiration pull theory
- d* Pulsatile movement theory

II

- p* J.C. Bose
- q* Strasburger
- r* Munch
- s* Godlewski
- t* Dixon and Jolly

A. a - r, b - q, c - t, d - p

B. a - q, b - p, c - t, d - r

C. a - r, b - p, c - t, d - q

D. a - s, b - r, c - p, d - q

Answer: C



Watch Video Solution

222. Stomata opening and closing is due to

- A. Rise in pH of guard cells causes hydrolysis of starch
- B. Cytokinins and cAMP are required
- C. Abscisic acid promotes closure
- D. All the above

Answer: D



Watch Video Solution

223. Basis of stomatal opening is

- A. Exosmosis
- B. Endosmosis
- C. Decrease in cell sap concentration
- D. Plasmolysis in guard cell

Answer: B



[Watch Video Solution](#)

224. Movement against concentration gradient is called

- A. Active transport
- B. Passive transport
- C. Diffuion
- D. Osmosis

Answer: A



[Watch Video Solution](#)

225. Guard cells regulate

- A. Photosynthesis
- B. Intensity of light entering leaves
- C. Change in green colour

D. Closing and opening of stomata

Answer: D



[Watch Video Solution](#)

226. Plant cell kept in saline drop will

A. Remain unchanged

B. Decrease in size

C. Increase in size

D. Burst out

Answer: B



[Watch Video Solution](#)

227. Which does not cause stomatal opening?

- A. Influx of K^+ ions
- B. Light
- C. High CO_2 concentration
- D. Circadian thymh

Answer: C

 [Watch Video Solution](#)

228. In pickles infection is rare due to

- A. plasmolysis
- B. Decrease in osmotic potential by salt
- C. Increase in osmotic potential by salt
- D. Decrease in temperature by salt

Answer: B

 [Watch Video Solution](#)

229. The plant growing in a dry environment possesses

- A. Thin Cuticle
- B. Poorly developed xylem
- C. Sunken stomata
- D. Aerenchyma

Answer: C



Watch Video Solution

230. Stomata generally operate in response to

- A. Atmospheric humidity
- B. Soil temperature
- C. Atmospheric temperature

D. Light

Answer: D



Watch Video Solution

231. Stomatal open in the daytime due to

- A. Decrease in pH
- B. Decrease in water potential
- C. Increase in water potential
- D. Light

Answer: B



Watch Video Solution

232. Wilting occure due to

- A. Diffusion
- B. Imbibition
- C. Exosmosis
- D. Endosmosis

Answer: C

 [Watch Video Solution](#)

233. In tall trees water is absorbed due to

- A. Transpiration/suction pull
- B. Root Pressure
- C. Capillary action
- D. Photosynthesis

Answer: A

 [Watch Video Solution](#)

234. Match the columns and find out the correct combination

- | | |
|-------------------------|------------------------|
| (a) Bulliform cells | (i) Lenticels |
| (b) Subsidiary cells | (ii) Isobilateral leaf |
| (c) Epithem | (iii) Stomata |
| (d) Complementary cells | (iv) Hydathodes |
| | (v) Phellem |

A. (a) - (ii), (b) - (iii), (c) - (i), (d) - (ii)

B. (a) - (i), (b) - (ii), (c) - (iv), (d) - (iii)

C. (a) - (ii), (b) - (iii), (c) - (iv), (d) - (i)

D. (a) - (iii), (b) - (ii), (c) - (iv), (d) - (i)

Answer: C



Watch Video Solution

235. Passive absorption occurs due to

A. Tension in root

B. Tension is xylem sap

C. ATP

D. None of the above

Answer: B



[Watch Video Solution](#)

236. The cell becomes turgid in solution which is

A. Hypertonic

B. Isotonic

C. Hypotonic

D. None of the above

Answer: C



[Watch Video Solution](#)

237. Value of osmotic potential (π) and pressure potential (p) of cells a, b,

| cell | π | p |
|------------------|-------|-----|
| a | 1.0 | 0.5 |
| c, d are given b | 0.6 | 0.3 |
| c | 1.2 | 0.6 |
| d | 0.8 | 0.4 |

Identify the correct sequence for movement of water

A. $b \rightarrow c \rightarrow d \rightarrow a$

B. $c \rightarrow b \rightarrow a \rightarrow d$

C. $d \rightarrow c \rightarrow a \rightarrow b$

D. $b \rightarrow d \rightarrow a \rightarrow c$

Answer: D



Watch Video Solution

238. Identify the correct statements and find out the correct combination

?

1. Accumulation of K^+ ions in guard cells does not require energy

2. A high pH favours stomatal opening

3. Movement of chloride ions into guard cells is in response to electrical differential created by K^+ ions

4. With entry of several K^+ ions and chloride ions, water potential of guard cells increases .

A. 1 and 3

B. 1 and 2

C. 2 and 3

D. 3 and 4

Answer: C



[Watch Video Solution](#)

239. Transpiration is mainly a process of

A. Imbibition

B. Respiration

C. Osmotic pressure

D. Diffusion

Answer: D



Watch Video Solution

240. Sunken stomata occur in the leaves of

A. Lemna

B. Nerium

C. Liliium

D. Trifolium

Answer: B



Watch Video Solution

241. Force developed in cortex of root which pushes water into xylem of root is

- A. Root pressure
- B. Turgor pressure
- C. Osmotic pressure
- D. Diffusion

Answer: A



Watch Video Solution

242. Match the columns and find the correct combination

| <i>I</i> | | <i>II</i> | |
|----------------|-------|-----------------|--|
| (a) Hypotonic | (i) | Water | |
| (b) Hypertonic | (ii) | Sucrose | |
| (c) Solute | (iii) | Lower tonicity | |
| (d) Solvent | (iv) | Higher tonicity | |

A. (a) - (i), (b) - (ii), (c) - (iii), (d) - (iv)

B. (a) -(iii), (b) - (ii), (c) - (i), (d) - (iii)

C. (a) -(iii), (b) - (ii), (c) - (iii), (d) - (i)

D. (a) -(iii), (b) - (iv), (c) - (ii), (d) - (i)

Answer: D



[Watch Video Solution](#)

243. Which one is a unit of measurement of water potential/osmotic pressure ?

A. Watts

B. Joule

C. Pascal

D. Litre

Answer: C



[Watch Video Solution](#)

244. Osmosis is not related to diffusion of water from

- A. One cell to another
- B. Soil to root
- C. Xylem to Xylem
- D. None of the above

Answer: C



Watch Video Solution

245. The potential energy of water is referred to as

- A. Osmotic potential
- B. Water potential
- C. Gravity potential
- D. pressure potential

Answer: B



[Watch Video Solution](#)

246. If two solutions have the same osmolarity, they are said to be

- A. Isotonic
- B. Hypertonic
- C. Hypotonic
- D. None of the above

Answer: A



[Watch Video Solution](#)

247. Which ones do not show transpiration ?

- A. Aquatic plants with floating leaves

B. Aquatic submerged plants

C. Plants growing in hilly areas

D. Plants living in deserts

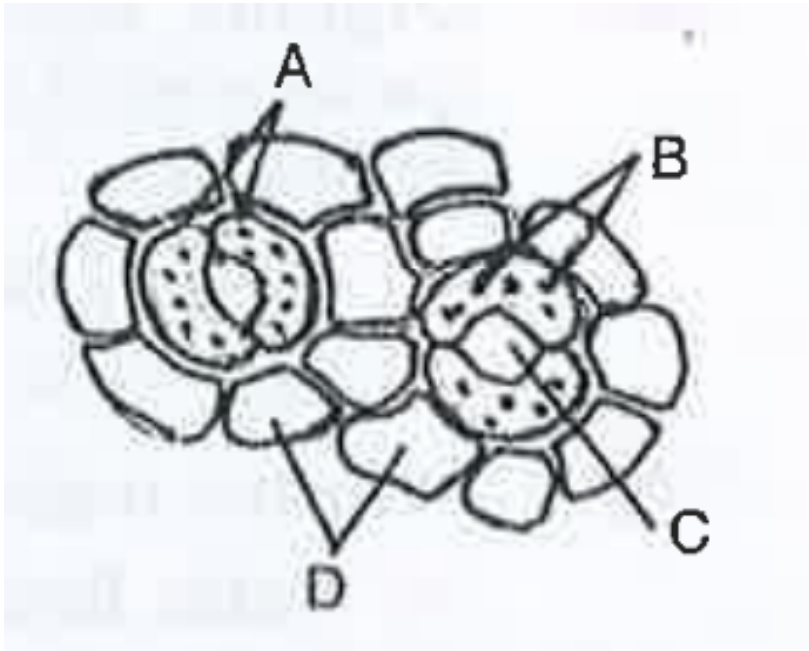
Answer: C



Watch Video Solution

248. The following figure shows the stomatal apparatus . Identify the parts labelled as A,B,C and D . Choose the correct answer from the

following



A. a - subsidiary cells, b - chloro - plaste, c - stoma, d - guard cell

B. a - guard cells , b - Stoma, c - Chloroplasts , d - subsidiary cells

C. a - guard cells, b - c - stomachloro - Chloroplasts , c - stoma, d - subsidiary cell

D. a - subsidiary cells, b - Stoma , c - Chloroplasts d - guard cell

Answer: C

[Watch Video Solution](#)

249. Match the columns and identify the correct combination

I

- a* Mass flow hypothesis
- b* Relay pump theory
- c* Transpiration pull theory
- d* Pulsatile movement theory

II

- p* J.C. Bose
- q* Strasburger
- r* Munch
- s* Godlewski
- t* Dixon and Jolly

A. (1) a - s, b - r, c - t, d - p

B. (2) a - s, b - r, c - , d - t

C. (3) a - r, b - s, c - p, d - t

D. (4) a - r, b - s, c - t, d - p

Answer: D



Watch Video Solution

250. A cell placed in 0.5 M sugar solution was found to be with no change in cell volume. If the same cell is placed in 0.5 M of sodium chloride solution, then there will be

- A. Increase in size
- B. Decrease in size
- C. Becomes turgid
- D. Gets plasmolyed

Answer: D

 [Watch Video Solution](#)

251. Potometer works on the principle of -

- A. Osmotic pressure
- B. Amount of water absorbed equal the amount transpired
- C. Root pressure
- D. Potential difference between tip of tube and that of plant

Answer: B

 [Watch Video Solution](#)

252. What is true ?

- A. ABA opens stomata
- B. ABA opens stomata while cytokinin closes stomata
- C. ABA closes while cytokinin opens stomata
- D. ABA and cytokinin do not affect stomata

Answer: C



Watch Video Solution

253. Guard cells line

- A. Stomata
- B. Hydathode
- C. Pnunmatophore

D. Lenticle

Answer: A



Watch Video Solution

254. Maximum water loss occurs through

A. Lenticels

B. Hydathodes

C. Stomata

D. Cuticle

Answer: C



Watch Video Solution

255. Which is incorrect ?

A. $\Psi_\omega = \Psi_\pi + \Psi_p$

B. $\Psi_\omega = \Psi_m + \Psi_\pi + \Psi_p$.

C. $\Psi_\omega = \Psi_s + \Psi_p$

D. $\Psi_\omega = \Psi_m + \Psi_\pi + \Psi_p$.

Answer: D

 [Watch Video Solution](#)

256. Pulsation theory was proposed by

A. Godlewski

B. J.C. Bose

C. Dixon and Joly

D. Arthur

Answer: B

 [Watch Video Solution](#)

257. Water will enter a cell if it is placed in solution less concentrated than cell sap due to

- A. Endosmosis
- B. Diffusion
- C. Imbibition
- D. Plasmolysis

Answer: A



[Watch Video Solution](#)

258. Which one is responsible for opening of stomata ?

- A. Decrease in CO_2 concentration and increase in H^+ ion concentration

B. Decrease in CO_2 concentration and decrease in H^+ ion concentration

C. Increase in CO_2 concentration and increase in H^+ ion concentration

D. More free H^+ ions and less Cl^- ions.

Answer: B



Watch Video Solution

259. Water is lost through hydathodes. Hydathodes

A. Remain closed at night

B. Remain closed during day

C. Remain always open

D. Remain open during day .

Answer: C



Watch Video Solution

260. Which one is correct ?

A. $\Psi_{\omega} = \Psi_m - (\Psi_s + \Psi_p)$.

B. $\Psi_{\omega} = \Psi_m - \Psi_s - \Psi_p$.

C. $\Psi_{\omega} = \Psi_m + \Psi_s + \Psi_p$.

D. $\Psi_{\omega} = \Psi_m + (\Psi_s - \Psi_p)$.

Answer: C



Watch Video Solution

261. Passive absorption of water by the root system of the result of

A. Forces created in the cells of the root

B. Osmotic forces in the shoot system

C. Increased respiratory activity in cells of the root

D. Tension in the sap due to transpiration

Answer: D



[Watch Video Solution](#)

262. Influx of $K(+)$ ions into guard cells and efflux of $H(+)$ ions from guard cells lead to

A. Exosmosis

B. Plasmolysis

C. Closure in stomata

D. Opening of stomata

Answer: D



[Watch Video Solution](#)

263. Assertion : When the ambient temperature is high and soil contains excess of water, the plants tend to lose water in the form of droplets from lenticels.

Reason : Root pressure regulates the rate of loss of water form lenticels.

- A. if both are true with reason being correct explanation (A),
- B. both true but reason is not correct explanation (B),
- C. Assertion is ture but reason is wrong (C),
- D. both are wrong (D),

Answer: D



[Watch Video Solution](#)

264. Assertion : In angiosperms the conduction of water is more efficient because their xylem has vessels.

Reason : Conduction of water by vessel elements is an active process with energy supplied by xylem parenchyma rich in mitochondria.

A. if both are true with reason being correct explanation (A),

B. both true but reason is not correct explanation (B),

C. Assertion is true but reason is wrong (C),

D. both are wrong (D),

Answer: C

 [Watch Video Solution](#)

265. Which ones are true and false ? (a) Positive hydrostatic pressure is called turgor pressure (b) Wall pressure exerts to prevent the increase of protoplasm size (c) Diffusion is more rapid in liquid than in gases (d) Diffusion of water through a semipermeable membrane is called imbibition (e) Osmosis is movement of substances which takes place along a diffusion gradient

A. a and b are true but c, d and e are false

B. a and c are true but b, d and e are false

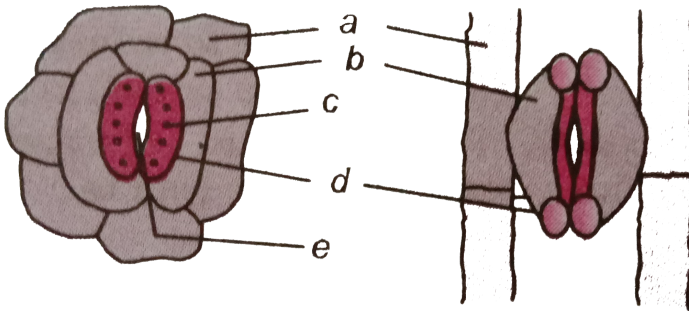
C. a and d are true but b, c and e are false

D. a and e are true but b, c and d are false

Answer: A

 [Watch Video Solution](#)

266. Choose the correct combination of labelling in Potato osmoscope



A. a - epidermal cells , b - subsidiary cells, c - chloroplast, d - stomatal aperture , e - guard cells

B. a - epidermal cells , b - subsidiary cells, c - chloroplast, d - guard cells , e - guard cells stomatal aperture

C. a - epidermal cells , b - guard cells, c - chloroplast, d - subsidiary cells

, e - stomatal aperture

D. a - subsidiary cells, b epidermal cells c - chloroplast, d - stomatal

aperture , e - guard cells

Answer: B

 [Watch Video Solution](#)

267. Match the columns

| <i>I</i> | <i>II</i> |
|----------------------|------------------------------------|
| <i>a</i> Diffusion | 1. Hydrophilic substance |
| <i>b</i> Osmosis | 2. Strinkage of protoplasm |
| <i>c</i> Imbibition | 3. Semipermeable membrane |
| <i>d</i> Plasmolysis | 4. Free movement of ions and gases |

A. a - 2, b - 1, c - 4, d - 3

B. a - 3, b - 1, c - 4, d - 2

C. a - 2, b - 3, c - 4, d - 1

D. a - 4, b - 3, c - 1, d - 2

Answer: D



Watch Video Solution

268. Who is related to ascent of sap

A. Mc Clung

B. J.C. Bose

C. A. Fleming

D. J Lederberg.

Answer: B



Watch Video Solution

269. Which is incorrect

A. Rate of diffusion is directly proportional to concentration

B. Rate of diffusion is inversely proportional to distance

C. Diffusion is movement of particles from low to high electrochemical potential

D. Example of diffusion is opening of scent or ammonia in one corner

Answer: C



[Watch Video Solution](#)

270. Oozing out of water drops from injured edges of tips is

A. Bleeding

B. Guttation

C. Transpiration

D. Oozation

Answer: A



[Watch Video Solution](#)

271. Upward movement of water in plants is called

- A. Translocation
- B. Suction
- C. Flight
- D. Ascent of sap .

Answer: D



Watch Video Solution

272. Rate of transpiration will increase if

- A. RH increases
- B. RH decreases
- C. RH remains unchanged

D. Water potential gradient remains unchanged

Answer: B



Watch Video Solution

273. Select the correct ones.

A-Apoplastic movement of water occurs exclusively through cell wall.

B-Solution increase free energy of water or water potential.

C-Symplastic movement occurs through plasmodesmata.

D- Membrane permeability depends upon membrane composition as well as chemical nature of solute

A. a and b only

B. b and d only

C. a, c and d only

D. a, b and d only

Answer: C



[Watch Video Solution](#)

274. Which is wrong

- A. Water potential is chemical potential of water
- B. Solute potential is always negative
- C. Pressure potential is zero in a flaccid cell
- D. Water potential equal solute potential in a fully turgid cell

Answer: D



[Watch Video Solution](#)

275. What is the effect of accumulation of K^+ ions in guard cells ?

- A. Loss of turgidity

B. Water potential decreases

C. Exosmosis

D. Water potential increases

Answer: B



[Watch Video Solution](#)

276. Physiological demonstration of osmosis is carried out by

A. Potometer

B. Bell jar experiment

C. Thistle funnel whose mouth is tied with egg membrane

D. Thistle funnel whose mouth is tied with paper .

Answer: C



[Watch Video Solution](#)

277. Enzyme connected with carboxylation of RuBP is

- A. Pyruvic kinase
- B. Cytochrome oxidase
- C. PEP carboxylase
- D. RuBISCO.

Answer: C



Watch Video Solution

278. Guttation occurs when

- A. Wind velocity is high
- B. Humidity increases
- C. Root pressure is less and transpiration rate is more
- D. Root pressure is more transpiration rate is less

Answer: D



[Watch Video Solution](#)

279. Plasmolysis occurs when cells are kept in

- A. Hypotonic solution
- B. Hypertonic solution
- C. Isotonic solution
- D. None of the above

Answer: B



[Watch Video Solution](#)

280. A and B cells are contiguous. Cell A has $OP=10$ atm, $TP=7$ atm and $DPD=3$ atm. Cell B has $OP=8$ atm, $TP=3$ atm and $DPD=5$ atm. The result would be

- A. No movement of water
- B. Equilibrium between the two
- C. Movement of water from A to B
- D. Movement of water from B to A

Answer: C

 [Watch Video Solution](#)

281. Cell wall shows

- A. Semipermeability
- B. Differential permeability
- C. Complete permeability
- D. Impermeability

Answer: C

 [Watch Video Solution](#)

282. Given below are assertion and reason. Dried seeds of Pea are kept in tin, water is poured over them upto upper level. A lid is put tight over it. Within an hour the lid is blown off Reason. Due to rapid cell division in Pea seeds

- A. if both are true with reason being correct explanation (A),
- B. both true but reason is not correct explanation (B),
- C. Assertion true but reason is wrong (C),
- D. both are wrong (D),

Answer: C



[Watch Video Solution](#)

283. Which of the following statements are not true

- (a) In CAM plant, stomata open during dark and remain closed during day
- (b) Role of Na^+ in stomata opening is now universally accepted

(c) Water Potential of root cells is higher than water potential of soil

(d) Capillarity theory is most accepted theory of water movement through plants

(e) Wall of xylem vessels made up of lignocellulose has strong affinity for water molecules

A. a , c and e

B. b, c and d

C. a, b and c

D. b and c

Answer: B



[Watch Video Solution](#)

284. In thistle funnel experiment, if sugar is added to beaker after the stoppage of osmosis, then

A. Level of solution in beaker lowers

- B. Level of solution in thishle funnel rises up
- C. Level of solution remins unaffected in beaker
- D. Level of solution in thistle funnel lowers.

Answer: D

 [Watch Video Solution](#)

285. Starch of guard cells is converted into PEP through

- A. Hydrolysis
- B. Oxidation
- C. Dephosphorylation
- D. Decarboxylation

Answer: A

 [Watch Video Solution](#)

286. Which one is most efficient imbibant ?

- A. Pectin
- B. Agar
- C. Cellulose
- D. Lignin

Answer: B



Watch Video Solution

287. Energy source responsible for upward flow of water is:

- (a) sun energy
- (b) artificial light
- (c) sucrose
- (d) ATP

A. ATP

B. Sucrose

C. Solar heat

D. Light

Answer: C



[Watch Video Solution](#)

288. In a fully turgid cell

A. Ψ_s is negative and Ψ_p is positive

B. Ψ_p is negative and Ψ_s is positive

C. Both Ψ_p and Ψ_s are positive

D. Both Ψ_s and Ψ_p are negative

Answer: A



[Watch Video Solution](#)

289. Root pressure is maximum when

- A. Transpiration is very high and absorption is high
- B. Transpiration is low and absorption is low
- C. Transpiration is high and absorption is low
- D. Transpiration is very low and absorption is low

Answer: D



Watch Video Solution

290. Guard cell regulate

- A. Respiration
- B. Transpiration
- C. Photosynthesis
- D. Photorespiration

Answer: B

 [Watch Video Solution](#)

291. Which ones show physiological process called "necessary evil" (a) Potamogeton (b) Sagittaria (c) Limnophila (d) Nymphaea

A. b,c,d

B. a,b,c

C. a,b,d,

D. a,c,d

Answer: A

 [Watch Video Solution](#)

292. Study the following table showing the components of water potential in closely arranged mesophyll cells namely A, B and C

| Cell | Osmotic Potential (MPa) | Pressure Potential (MPa) |
|----------|-------------------------|--------------------------|
| <i>A</i> | -0.21 | 0.05 |
| <i>B</i> | -0.22 | 0.02 |
| <i>C</i> | -0.23 | 0.05 |

Identify two of the following , which show the correct direction of water movement between two cells .

I. A → B. II B → C

III. C → A. IV C → B

A. a,b

B. b,c

C. a, d

D. b,d

Answer: C



Watch Video Solution

293. Ionic flux of guard cells directly connected with expenditure of energy is

A. Outward movement of protons

B. Outward movement of malate

C. Inward movement of K^+

D. Inward movement of Cl.

Answer: A



Watch Video Solution

294. Which ones regulate stomatal movements (a) IAA (b) GA₃ (c) Zeatin

(D) ABA

A. a,c

B. b,c

C. c,d

D. b,d

Answer: C

 [Watch Video Solution](#)

295. Thin and elastic walls of guard cells are

- A. Inner and lateral
- B. Inner
- C. Outer
- D. Outer and lateral

Answer: D

 [Watch Video Solution](#)

296. Colligative property is 1.Osmotic pressure 2. Vapour pressure
3.Cohesion force 4.Surface tension

- A. 1,2,3
- B. 1,2

C. 2,4

D. 1,3

Answer: B



[Watch Video Solution](#)

297. Water column does not rupture during ascent in tracheary elements due to

- A. Weak gravitational pull
- B. Transpiration pull
- C. Lignified thick walls
- D. Cohesion and adhesion

Answer: D



[Watch Video Solution](#)

298. Stomata open when guard cells swell due to

- A. Decreased water potential
- B. Increased water potential
- C. Endosmosis by efflux of K^+ ions
- D. Endosmosis by influx of hydrogen ions.

Answer: A



Watch Video Solution

299. Transpiration facilitates

- A. Electrolyte balance
- B. Absorption of water by roots
- C. Opening of stomata
- D. Excretion of minerals

Answer: B



[Watch Video Solution](#)

300. An RBC and a plant cell having same O.P. are placed in distilled water.

- A. None undergoes any change
- B. Plant cell swells up and bursts but there is no change in RBC
- C. RBC swells up and bursts but plant cell remains about the same size
- D. Both decrease in size and collapse.

Answer: C



[Watch Video Solution](#)

301. Which of the following would be in insignificant amount in xylem sap

- A. Water

B. Nitrate

C. Phosphate

D. Sugar

Answer: D



[Watch Video Solution](#)

302. Which pathway involves cell wall and intercellular spaces?

A. Vascular pathway

B. Protoplast pathway

C. Symplast pathway

D. Apoplast pathway

Answer: D



[Watch Video Solution](#)

303. Efflux of K^+ and Cl^- will cause

- A. Closure of stomata
- B. Opening of stomata
- C. Increased turgidity
- D. Imbibition

Answer: A



Watch Video Solution

304. The water potential increases due to

- A. Evaporation
- B. Addition of solution
- C. Pressure
- D. Afforestation

Answer: C



[Watch Video Solution](#)

305. Most of the water flow in the root takes place via the apoplast because

- A. Cortical cells are living cells
- B. Cortical cells are loosely arranged
- C. Cortical cells are thin walled
- D. All the above

Answer: B



[Watch Video Solution](#)

306. For the same amount CO_2 fixed C_4 plant, in comparison with a C_3 plants, lose only

- A. Half amount of water
- B. Double amount of water
- C. Equal amount of water
- D. None of the above

Answer: A

 [Watch Video Solution](#)

307. In the cell walls of the guard cells, cellulose microfibrils are oriented

- A. Transversely
- B. Tangentially
- C. Radially
- D. Obliquely

Answer: C

 [Watch Video Solution](#)

308. Graham's law is connected with

- A. Diffusion
- B. Osmosis
- C. Osmoregulation
- D. Absorption

Answer: A



Watch Video Solution

309. Select the correct events leading to the opening of the stomata

- (i) Decline in guard cell solutes
- (ii) Lowering of osmotic potential of guard cells
- (iii) Rise in potassium levels in guard cells
- (iv) Movement of water from neighbouring cells into guard cells
- (v) Guard cells becoming flaccid

A. a,e

B. b,c,d

C. a,c,d

D. b,d,e

Answer: B



[Watch Video Solution](#)

310. Water potentials of pure water and its solution are

A. 0 and 1

B. 0 and 0

C. 0 and more than one

D. 0 and less than one .

Answer: D



[Watch Video Solution](#)

311. Bacteria can not survive in a highly salted pickle because

- A. Salt inhibits reproduction of bacteria
- B. They become plasmolysed and die
- C. Nutrients in it cannot support life
- D. Enough light is not available for photosynthesis.

Answer: B



Watch Video Solution

312. What happens when concentration of solutes decreases in guard cells

- A. Water potential decreases
- B. Water potential increases
- C. Osmotic pressure increases

D. None of the above

Answer: B



[Watch Video Solution](#)

313. Force of cohesion develops due to

- A. Attraction between similar molecules
- B. Attraction between different molecules
- C. Surface tension at the interface
- D. All the above

Answer: A



[Watch Video Solution](#)

314. Major loss of water in transpiration occurs through

A. Cuticle

B. Bark

C. Hydathodes

D. Stomata

Answer: D



Watch Video Solution

315. Osmotic potential and pressure potential of three cells , a,b,s located in different parts of an actively transpiring plant are

| Cell | O.P (MPa) | P.P(MPa) |
|----------|-----------|----------|
| <i>a</i> | -0.87 | 0.44 |
| <i>b</i> | -0.92 | 0.34 |
| <i>c</i> | -0.68 | 0.27 |

which ones are roots hair , root cortical and mesophyll cells respectively

A. a,b,c

B. a,c,b

C. c,a,b

D. b,c,a

Answer: C

 [Watch Video Solution](#)

316. The number of stomata and epidermal cells in 1 mm^2 leaf area of lower epidermis of the leaves X, Y and Z plants are given below. Arrange the plants in decreasing order of their stomatal index.

The correct answer is

| Cell | Numbers of Stomata | Numbers of epidermal cells |
|------|--------------------|----------------------------|
| X | 30 | 150 |
| Y | 60 | 240 |
| Z | 90 | 400 |

A. Z,Y,X

B. X,Y,Z

C. Y,X,Z

D. Y,Z,X

Answer: D



[Watch Video Solution](#)

317. Which of the following is done during ringing experiment

- A. Bark is removed
- B. Xylem is removed
- C. Pith is removed
- D. All the above

Answer: A



[Watch Video Solution](#)

318. Glucose is not stored in plant due to

- A. Decrease in osmotic pressure
- B. Increases in osmotic pressure
- C. Increases in turgor pressure
- D. Decreases in turgor pressure

Answer: B

 [Watch Video Solution](#)

319. Which of the following is not related with transpiration pull theory ?

- A. Capillarity
- B. Adhesion
- C. Cohesion
- D. Ascent of sap

Answer: A

 [Watch Video Solution](#)

320. Which of the following scientist is credited with the mechanism of opening and closing of stomata related to K^+ exchange?

- A. Levitt
- B. Sayre
- C. Scarth
- D. Lloyd

Answer: A



Watch Video Solution

321. Cohesion transpiration pull theory operates in

- A. Active absorption
- B. Passive absorption
- C. Active and passive absorption

D. Apoplastic movements

Answer: B

 [Watch Video Solution](#)

322. Water absorption of root hairs occurs until

- A. Concentration of water in the cell sap is higher
- B. Salt concentration in cell sap is higher
- C. They are separated from the soil by a selectively permeable membrane
- D. Water potential is lower

Answer: D

 [Watch Video Solution](#)

323. According to the Steward's starch hydrolysis theory, which one of the following is the principle reason for the opening of stomata during daytime

- A. Influx of K^+ ions into guard cells under influence of ABA hormone
- B. Conversion of sugar into starch in guard cells
- C. Efflux of K^+ ions from guard cells under the influence of ABA hormone
- D. Photosynthetic utilisation of CO_2 in guard cells.

Answer: D



[Watch Video Solution](#)

324. Compare the statements a and b
Statement a. To counteract the increase in turgor pressure in plant cells the cell wall produces an equal and opposite pressure, i.e., wall pressure
Statement b. When plant cells undergo endosmosis, they swell but do not burst .

- A. Both the statements a and b are correct and a is reason for b
- B. Statement a is correct and b is wrong
- C. Statement a is wrong and b is correct
- D. Both the statements a and b are correct and a is not the reason for b

Answer: A



Watch Video Solution

325. Cell A and cell B are adjacent plant cells. In cell A $\Psi_s = -20$ bars and $\Psi_p = 8$ bars. In cell B, $\Psi_s = -12$ bars and $\Psi_p = 2$ bars. Then,

- A. Water moves from cell a to cell b
- B. There is no movement of water between cell a and cell b
- C. Water moves from cell b to cell a

D. Equal amount of water is simultaneously exchanged between cell a and cell b.

Answer: C



[Watch Video Solution](#)

326. Which one is the driving force for the process of passive absorption of water in roots

- A. Root pressure
- B. Transpiration in leaves
- C. Activity of aquaporins
- D. Increase in imbibition pressure in root cells

Answer: B



[Watch Video Solution](#)

327. Solute Potential of a solution is always

- A. 0
- B. > 0
- C. < 0
- D. Between 0.1-1.0

Answer: B



Watch Video Solution

328. Stomata opening and closing is due to

- A. Change in turgidity of guard cell
- B. Cellulose microfibrils of guard cells are oriented radially
- C. The inner wall of each guard cell is thick and less elastic
- D. All the above

Answer: D



Watch Video Solution

329. Attraction of water molecules to polar surfaces is known as

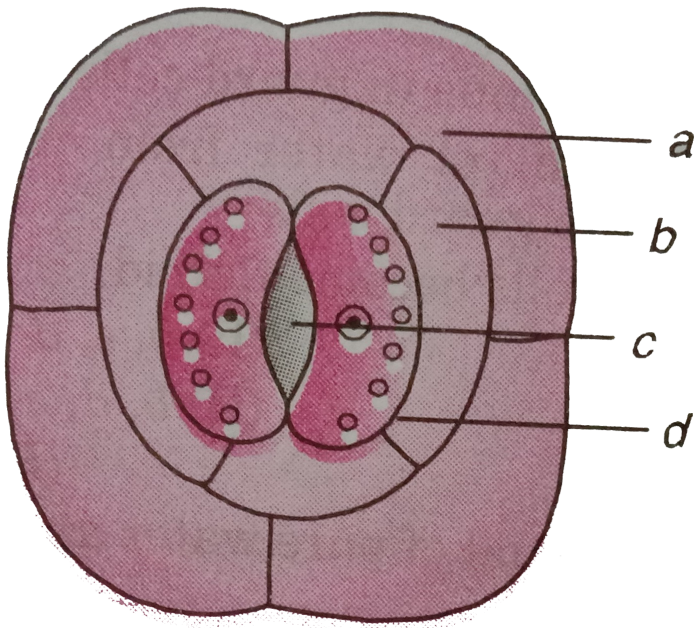
- A. Adhesion
- B. Tensile strength
- C. Surface tension
- D. Cohesion

Answer: A



Watch Video Solution

330. Given below is diagram of stomatal apparatus. Which option identifies labelling a, b, c, d correctly



A.

a *b* *c* *d*
 (A) Subsidiary cell Epidermal cell Guard cell Stomatal aperture

B.

a *b* *c* *d*
 (A) Guard cell Stomatal aperture Subsidiary cell Epidermal cell

C.

a *b* *c* *d*
 (A) Epidermal cell Guard cell Stomatal aperture Subsidiary cell

D.

a *b* *c* *d*
 (A) Epidermal cell Subsidiary cell Stomatal aperture Guard cell

Answer: D



Watch Video Solution

331. Apoplast is the system of adjacent cell walls that is continuous throughout the plant except at the

- A. Plasmodesmata
- B. Vessel elements
- C. Casparian strips of endodermis
- D. Tracheids.

Answer: C



Watch Video Solution

332. A negative effect of transpiration is

- A. Development of water stress
- B. Increase in mineral absorption
- C. Maintenance of leaf temperature
- D. Causing cooling

Answer: A



Watch Video Solution

333. What causes opening of stomata

- A. Thin wall of guard cell facing stomatal pore is stretched more, curves in and pore opens
- B. Thick wall of guard cell facing stomatal pore is stretched more, moves in and pore opens
- C. As thin wall of guard cell is stretched less, the guard cell well facing the stomatal pore moves in and pore opens

D. Thick wall of guard cell facing the stomatal pore is stretched less, moves in and the pore opens.

Answer: D



Watch Video Solution

334. Movement of water from higher water potential to lower water potential through a semipermeable membrane is called

- A. Osmosis
- B. Diffusion
- C. Plasmolysis
- D. Imbibition

Answer: A



Watch Video Solution

335. Which of the following is not a purpose of transpiration

- A. Supplies water for photosynthesis
- B. Maintains shape and structure of plants
- C. Helps in translocation of sugar from source to sink
- D. Cools leaf surfaces

Answer: C



Watch Video Solution

336. Which of the following is a rapid type of water absorption?

- A. Active absorption
- B. Passive absorption
- C. Continuous absorption
- D. Pulsationg absorption

Answer: B



Watch Video Solution

337. Which is not directly connected with ascent fo sap?

- A. Cohesion theory
- B. Root Pressure
- C. Apoplast-symplast
- D. Capillarity

Answer: C



Watch Video Solution

338. Tracheids are less efficient than vessels due to

- A. Absence of closed and walls

- B. Uneven thickenings
- C. Casparian strips
- D. Presence of tapering end walls

Answer: D



[Watch Video Solution](#)

339. Difference between osmotic pressure and turgor pressure is

- A. DPD
- B. Transpiration pull theory
- C. Osmotic potential
- D. Solute potential

Answer: A



[Watch Video Solution](#)

340. Whose water potential is less than water potential of root hair during water absorption (by root hair)

- A. Gravitational water
- B. Pure water
- C. Vacuolar sap
- D. Soil solution

Answer: C



Watch Video Solution

341. Water potential of water is not affected by

- A. Concentration of dissolved substances
- B. Gravitation
- C. Capillarity
- D. Atmospheric pressure .

Answer: C



[Watch Video Solution](#)

342. Accumulation of which one of the following acids results in closure of stomata

- A. Malic acid
- B. Aspartic acid
- C. PEP
- D. OAA.

Answer: A



[Watch Video Solution](#)

343. 2 % *NaCl* as compared to 18 % glucose solution is

- A. Isoosmotic
- B. Hypoosmotic
- C. Hyperosmotic
- D. None of the above

Answer: B

 [Watch Video Solution](#)

344. Active absorption of water by roots from the soil is mainly affected by

- A. Tension in cell sap due to transpiration
- B. Hydrophobic nature of root hair
- C. Typical tissue organisation
- D. Osmotic concentration of xylem sap.

Answer: C

 [Watch Video Solution](#)

345. The space between plasma membrane and cell wall of a plasmolysed cell surrounded by a hypertonic solution is occupied by

- A. Isotonic solution
- B. Hypotonic solution
- C. Hypertonic solution
- D. Water

Answer: C

 [Watch Video Solution](#)

346. Which one of the following is not an antitranspirant

- A. Low viscosity resin
- B. BAP

C. Silicone oil

D. PMA

Answer: B

 [Watch Video Solution](#)

347. The process by which water is absorbed by solid like colloids causing them to increase in volume is

A. plasmolysis

B. Diffusion

C. Osmosis

D. Imbibition

Answer: D

 [Watch Video Solution](#)

348. Which of the following get accumulated in vacuoles of guard cells during stomatal opening

- A. Water, Ca and Mg
- B. Malate, Na and K
- C. Starch, K and Cl
- D. Malate, K and Cl

Answer: D



Watch Video Solution

349. Stomatal opening is influenced by

- A. N_2 concentration, CO_2 concentration and light
- B. CO_2 concentration, temperature and light
- C. N_2 concentration, light and temperature
- D. CO_2 concentration, N_2 concentration and temperature.

Answer: B



[Watch Video Solution](#)

350. Given below are assertion and reason .

Assertion . Water entering a plant cell makes it turgid

Reason Entry of water into cell develop wall pressure inside the cell

- A. If both are true with reason being correct explanation (A).
- B. If both are true with reason being not correct explanation (A).
- C. assertion is true but reason is wrong (C)
- D. And both are wrong (D)

Answer: C



[Watch Video Solution](#)

351. Assertion . Movement of materials inside phloem is bidirectional, both upwards and downwards

Reason. Movement of molecules inside xylem is unidirectional always upwards

- A. If both are true with reason being correct explanation (A).
- B. If both are true with but reason is not the correct explanation (B).
- C. assertion is true but reason is wrong (C)
- D. And both are wrong (D)

Answer: B



[Watch Video Solution](#)

352. The relationship $\pi v = nRT$ is not obeyed by

- A. Concentrated solution
- B. Dilute solution

C. Extremely dilute solution

D. All the above

Answer: C



[Watch Video Solution](#)

353. Phloem sap is mainly composed of

A. Water and sucrose

B. Water and minerals

C. Oligosaccharides and hormones

D. None of the above

Answer: A



[Watch Video Solution](#)

354. Measurements reveal that the forces generated by transpiration can create pressures sufficient to lift a xylem sized column of water over

- A. 130 feet
- B. 130 metres
- C. 230 feet
- D. 230 metres

Answer: B



Watch Video Solution

355. Guttation differs from transpiration in which aspect ?

- A. Control by stomata
- B. Occurrence during daytime
- C. Occurrence in vapour form
- D. Occurrence in liquid form

Answer: D



Watch Video Solution

356. The ability to rise in thin tubes and Ability to resist a pulling force are respectively referred to as

- A. Tensile strength and capillarity
- B. Cohesion and adhesion
- C. Capillarity and tensile strength
- D. Adhesion and capillarity

Answer: C



Watch Video Solution

357. Which of the following is not the purpose of transpiration

- A. Prevents lose of water
- B. Helps in absorption and transport
- C. Makes cells rigid
- D. Cools leaf surfaces

Answer: A



Watch Video Solution

358. An osmometer is filled with 0.5 M solution of NaCl in water. In which of the following solutions it must be immersed in order to make it shrink

- A. 0.05 M
- B. 0.75 M
- C. 0.5 M
- D. Distilled water

Answer: B

 [Watch Video Solution](#)

359. Stomata open by

- A. Increasing solute concentration in guard cells
- B. Weakening of cell walls of guard cell to allow them to stretch
- C. Increasing water potential of guard cells
- D. Decreasing the solute concentration of guard cells

Answer: A

 [Watch Video Solution](#)

360. Correct pathway of water movement in plant roots is

- A. Soil water → Root hair cell → Passage cells → Cortical cells
→ Xylem to Pericycle

B. Soil water → Root hair cell → Pericycle → Cortical cell →

Passage cells → Xylem

C. Soil water → Root hair cell → Cortical cell → Passage cells →

pericycle → Xylem

D. Soil water → Root hair cell → Cortical cell → Pericycle →

Passage cells → Xylem

Answer: C



Watch Video Solution

361. Which growth hormone is associated with stomatal movements

A. Auxin

B. Gibberellin

C. Cytokinin

D. ABA

Answer: B



[Watch Video Solution](#)

362. For a plasmolysed cell, which equation is correct ?

A. $DPD = OP + TP$

B. $DPD = -TP$

C. $DPD = OP$

D. $DPD = OP - TP$

Answer: D



[Watch Video Solution](#)

363. Identify the wrong statement

A. Proton motive force drives the uniport

B. Movement of NO_3 ions in cotransport is against their own concentration gradient

C. Azides inhibit the process of respiration

D. ATPase serves as proton-respiration carrier protein

Answer: C

 [Watch Video Solution](#)

364. Number of stomata is 30 and epidermal cells 120 per unit area of a leaf. The stomatal index is

A. 0.05

B. 0.5

C. 0.2

D. 0.02

Answer: A

 [Watch Video Solution](#)

365. Match the lists and find the correct option

I

II

- | | |
|-----------------------|----------------------------|
| a. Henry Dixon | 1. Bioelectric responses |
| b. Slatyer and Taylor | 2. Cohesion-tension theory |
| c. Lavitt | 3. Active proton concept |
| d. J.C. Bose | 4. Water potential |
| | 5. Term Physiology |

A. a - 5, b - 2, c - 1, d - 3

B. a - 2, b - 3, c - 4, d - 1

C. a - 5, b - 1, c - 4, d - 2

D. a - 5, b - 1, c - 4, d - 2

Answer: C

 [Watch Video Solution](#)

366. In stomatal opening, influx of K^+ is accompanied by efflux of

A. Na^+

B. K^+

C. Cl^-

D. H^+

Answer: C



[Watch Video Solution](#)

367. The most widely accepted theory of ascent of sap in trees is

A. Capillarity theory

B. Root Pressure theory

C. Pulsation theory

D. Transpiration pull theory

Answer: D



[Watch Video Solution](#)

368. Which of the following criteria does not pertain to facilitated transport

- A. Uphill transport
- B. High selectivity
- C. Transport saturation
- D. Requirement of special membrane proteins .

Answer: D



Watch Video Solution

369. Passage of water through a semipermeable membrane causes

- (a) Suction pressure
- (b) Osmotic pressure
- (c) Turgor pressure
- (d) Wall Pressure

A. Suction pressure

B. Osmotic pressure

C. Turgor pressure

D. Wall Pressure

Answer: A



[Watch Video Solution](#)

370. Apoplast movement of water occurs through:

A. Cell wall only

B. Cell wall and inter cellular spaces

C. Intercellular spaces

D. Intercellular spaces, cell walls and endodermis

Answer: C



[Watch Video Solution](#)

371. Which ions are responsible for stomatal movement

- A. Ferric
- B. Zinc
- C. Potassium
- D. Sodium

Answer: B



Watch Video Solution

372. Guttation only occurs in

- A. Hydrophytes
- B. Mesophytes
- C. Mangroves

D. Marshy plants

Answer: C



Watch Video Solution

373. The osmotic pressure of pure water is:

A. 0

B. 1

C. 10

D. 100

Answer: D



Watch Video Solution

374. When turgidity is lost in guard cells the stomatal pore

A. Remains unchanged

B. Gets plasmolysed

C. Becomes closed

D. Opens fully

Answer: A



Watch Video Solution

375. A thin film of water, held by the soil particles under the influence of internal attractive force, is called which of the following water

A. Ranaway

B. Hygroscopic

C. Gravitational

D. Capillarity

Answer: C

 [Watch Video Solution](#)

376. Consider the following statements and select the correct statement

Statement a. Pure water has the maximum water potential Statement b.

Osmotic potential is zero in pure water

- A. Both statements are correct and b is not the reason for a
- B. Both the statements are wrong
- C. Both statements are correct and b is the reason for a
- D. Both statements are correct

Answer: B

 [Watch Video Solution](#)

377. What is not significant is osmosis

- A. Gravitational Potential

B. Matric potential

C. Solute potential

D. pressure potential

Answer: C



[Watch Video Solution](#)

378. Pressure potential in a plasmolysed cell is

A. Positive

B. Zero

C. Negative

D. Remains same

Answer: A



[Watch Video Solution](#)

379. Maximum transpiration occurs in

- A. Mesophytes
- B. Bryophytes
- C. Thallophytes
- D. Pteridophytes

Answer: C



Watch Video Solution

380. Which factor does not contribute to stomatal opening

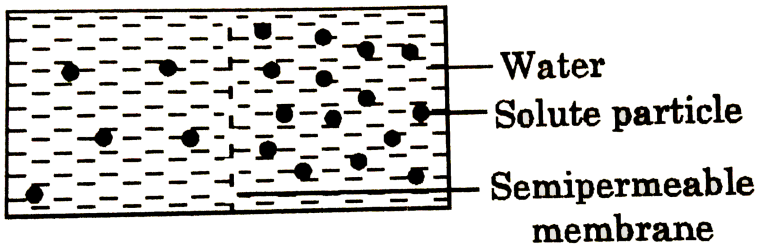
- A. Light
- B. Low pH
- C. Reduced CO_2
- D. Water

Answer: A

 Watch Video Solution

381. Chambers I and II are separated by a semipermeable membranes.

Study the given figure and choose the right option



A. Chamber I has higher water potential and water will move from I to II

B. Chamber II has lower solute potential and water will move from I to II

C. Chamber I has higher solute potential and water will move from II to I

D. Chamber II has lower water potential and water will move from II to

I

Answer: B



[Watch Video Solution](#)

382. Select the matched ones (i) Guttation-Water loss in liquid phase (ii) Adhesion- Mutual attraction between water molecules (iii) Imbibition- Absorption of water by dry wood (iv) Hypotonic solution-Cells shrink

A. I,ii and and iii only

B. ii and iv only

C. iii and iv only

D. I and iii only

Answer: A



[Watch Video Solution](#)

383. Which condition favours guttation

- A. High humidity
- B. Low humidity
- C. More transpiration
- D. Bright sunlight

Answer: D



Watch Video Solution

384. Number of stomata and epidermal cells in 1mm^2 area of abaxial surface of leaves a, b, c, and d are

| Plant | Number of stomata | Number of Epidermal cells |
|----------|-------------------|---------------------------|
| <i>a</i> | 40 | 730 |
| <i>b</i> | 60 | 510 |
| <i>c</i> | 70 | 450 |
| <i>d</i> | 30 | 620 |

Identify two

plants having least stomatal index

A. b and c

B. a and d

C. a and c

D. a and b

Answer: A



[Watch Video Solution](#)

385. Components of water potential of four cells of an actively transpiring monocot plant are

| cell | osmotic Potential | Pressure Potential |
|----------|-------------------|--------------------|
| <i>a</i> | -0.9 | 0.5 |
| <i>b</i> | -0.8 | 0.6 |
| <i>c</i> | -0.6 | 0.1 |
| <i>d</i> | -0.7 | 0.4 |

Identify the four cells as root hair, Cortical cell, endodermal and pericycle cells

A. b, c, d, a

B. b, d, c, a

C. b, d, a, c

D. a, d, b, c,

Answer: B



[Watch Video Solution](#)

386. When the concentration of the soil solutes is low the absorption of water

A. Raterded

B. Increased

C. Normal

D. Absent

Answer: C



[Watch Video Solution](#)

387. Water potential of pure water at standard temperature is equal to

A. 10

B. 20

C. 0

D. None of the above

Answer: A



Watch Video Solution

388. In a plant cell DPD is zero when it is

A. Plasmolysed

B. Turgid

C. Flaccid

D. Incipient

Answer: C

 [Watch Video Solution](#)

389. Choose the wrong statement

- A. Cells swell in hypertonic solutions and shrink in hypotonic solution
- B. Water potential is the kinetic energy of water which helps in movement of water
- C. Absorption of water by seeds and dry wood takes place by special type of diffusion called imbibition
- D. Ψ_s is always negative

Answer: B

 [Watch Video Solution](#)

390. The osmotic expansion of a cell kept in water is chiefly regulated by

A. Vacuoles

B. Plastids

C. Ribosomes

D. Mitochondria

Answer: A



[Watch Video Solution](#)

391. Number of stomata present per cm^2 of a common leaf is about

A. 1000-60,000

B. 10-1000

C. 50,000-100,000

D. 50-100.

Answer: A



[Watch Video Solution](#)

392. Match and find the correct combination

- | | |
|-------------------------|--|
| (a) Scotoactive stomata | (i) Opening and closing of photoactive stomata |
| (b) Guttation | (ii) Transpiration |
| (c) Tensile strength | (iii) Water loss in liquid phase |
| (d) K^+ pump theory | (iv) Night transpiration |
| | (v) Antitranspirant |

A. a - iv, b - iii, c - ii, d - i

B. a - iv, b - v, c - ii, d - iii

C. a - iii, b - iv, c - v, d - ii

D. a - iii, b - i, c - iv, d - ii

Answer: A



Watch Video Solution

393. The correct ascending sequence with respect to their water potential is

(a) $\pi = -0.8MPa, P = +0.4MPa$

(b) $\pi = -1.0MPa, P = +0.5MPa$

(c) $\pi = -0.9MPa, P = +0.2MPa$

(d) $\pi = -0.3MPa, P = +0.2MPa$

A. a, b, c, d

B. c, b, a, d

C. c, a, b, d

D. c, d, b, a

Answer: A



Watch Video Solution

394. Find out the correct pair of statements (i) In completely plasmolysed cell, pressure potential does not contribute to water potential (ii) If a cell

is placed in hypotonic solution for longer time , the cell membrane shrinks away from its cell wall (iii) Apoplastic system comprises interconnected protoplasts (iv) Polypeptides have more imbibing capacity than polysaccharides

A. i, iv

B. i,ii

C. ii, iv

D. iii, iv.

Answer: B



Watch Video Solution

395. A column of water within xylem vessels of tall trees does not break under its weight because of

A. Dissolved suger in water

B. Tensile strangth of water

C. Lignification of xylem vessels

D. Positive root pressure

Answer: B



Watch Video Solution

396. Water potential gradient between adsorbent and the liquid imbibed is essential for imbibition . In addition, for any substance to imbibition . In addition, for any substance to imbibe any liquid, one of the following is also a pre-requisite

A. Affinity beteen adsorbant and the liquid

B. Molecular density of adsorbant

C. Concentration of adsorbant

D. Pressure potential of the adsorbant

Answer: B



Watch Video Solution

397. Which of the following is not correct mass flow hypothesis

- A. Loading of phloem sets up a water potential gradient that facilitates the mass movement in phloem
- B. The sugar which is transported is sucrose
- C. The sugar is moved bidirectionally
- D. As hydrostatic pressure in phloem sieve tube increases, pressure flow stops and sap accumulates in phloem

Answer: A



Watch Video Solution

398. What are the forces that maintain the continuity of water column during ascent of sap?

- A. Evaporation of water
- B. Cohesive property of water
- C. Pressure of air bubbles in water
- D. Small size of xylem vessels .

Answer: D

 [Watch Video Solution](#)

399. Guttation is a process of loss of water in

- A. Liquid form containing dissolved minerals
- B. Liquid form without dissolved minerals
- C. Vapour form with minerals
- D. Vapour form without minerals

Answer: B

 [Watch Video Solution](#)

400. The apoplast is located

- A. Outside the plasma membrane
- B. In the entire cytosol
- C. On both sides of plasma membrane
- D. In the plastidial content

Answer: A



Watch Video Solution

401. Match and find the correct option

- | | | | |
|-----|--------------------|-------|---------------------------|
| (a) | Water potential | (i) | It is usually positive |
| (b) | Solute potential | (ii) | It is zero for pure water |
| (c) | Pressure potential | (iii) | It is always negative |

A. a- ii, b-iii, c-i

B. a-i, b-iii, c-ii

C. a-iii, b-ii, c-i

D. a-ii, b- i, c-iii

Answer: A



Watch Video Solution

402. Which of the following statements about plasmolysis is/ are true I. Plasmolysis occurs when water moves into cell II. Cells shrink in hypotonic solution III. If the external solution balances the osmotic pressure of cytoplasm, it is said to be isotonic

A. I only

B. II only

C. III only

D. I and II only

Answer: A



Watch Video Solution



Watch Video Solution

403. Above this minimum vertical distance, the gravity potential is not negligible

- A. 1 m
- B. 5 m
- C. 10 m
- D. 20 m

Answer: C



Watch Video Solution

404. Imbibition involves

- A. Solute potential
- B. Gravity potential

C. Matric potential

D. Pressure potential

Answer: B



[Watch Video Solution](#)

405. The major solute taken in by guard cells is Na^+

A. Na^+

B. Ca^{2+}

C. K^+

D. Mg^{2+}

Answer: C



[Watch Video Solution](#)

406. Water potential of soil quantified in term of

- A. Pressure
- B. Volume
- C. Molar concentration
- D. Molal concentration

Answer: C



Watch Video Solution

407. Identify the wrong statement .

- A. The degree of decrease of chemical potential of water depends on concentration of solute
- B. Bacteria and fungal spores are killed when they enter into pickles and jams dues to plasmolysis

C. Process of water exudation is called transpiration

D. Reverse plasmolysis will occur when flaccid cells are placed in hypotonic solution

Answer: C



Watch Video Solution

408. Find the correct pair of statements

- (i) Influx of Cl^- into guard cells during stomatal opening is active.
- (ii) Entry of sucrose from companion cells into sieve tubes at source involves expenditure of energy
- (iii) At the sinks sucrose moves out of phloem by passive transport
- (iv) Efflux of K^+ from guard cells during stomatal closure does not involve energy expenditure

A. ii,iv

B. ii,iii

C. i,iii

D. iii, iv.

Answer: C



Watch Video Solution

409. Arrange the following in ascending order based on their solute concentration

| Cell | Water Potential (KPa) | Pressure Potential(KPa) |
|------|-----------------------|-------------------------|
| (a) | -590 | 320 |
| (b) | -368 | 623 |
| (c) | -292 | 412 |
| (d) | -481 | 146 |

A. c, a, d, b

B. d, c, a, b

C. a, c, b, d

D. b, a, c, d

Answer: B



[Watch Video Solution](#)

410. Photosynthates are translocated from source to sink organs mainly in the form of

- A. Glucose
- B. Fructose
- C. Starch
- D. Sucrose

Answer: D



[Watch Video Solution](#)

411. The movement of water and minerals in xylem and the movement of phloem sap in phloem is respectively

A. Unidirectional, bidirectional

B. Bidirectional, bidirectional

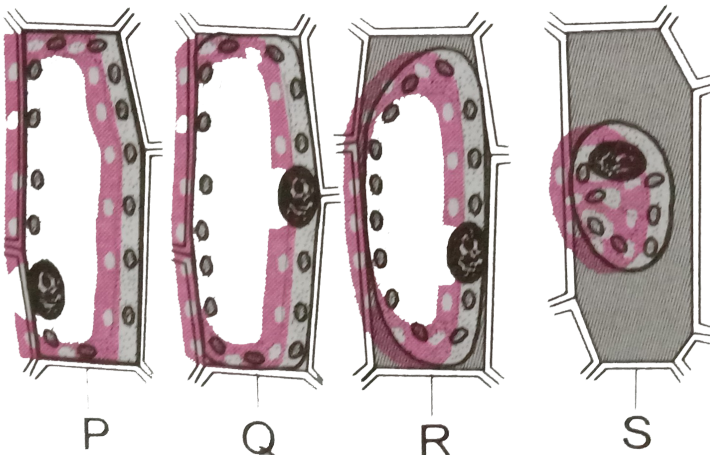
C. Bidirectional, unidirectional

D. Unidirectional, unidirectional .

Answer: D

 [Watch Video Solution](#)

412. In the given diagram, which is the initial condition of plasmolysis



A. P

B. Q

C. R

D. S

Answer: A



Watch Video Solution

413. Water exudation through hydathodes is

A. Guttation

B. Transpiration

C. Evaporation

D. Bleeding

Answer: B



Watch Video Solution

414. Apoplast movement of water occurs through:

A. i,ii and iv

B. iii and iv

C. i and ii

D. ii and iv

Answer: A



Watch Video Solution

415. In plants opening of stomata is regulated by

A. Red light

B. Blue light

C. Far-red light

D. Ultraviolet light .

Answer: C



Watch Video Solution

416. Incipient plasmolysis is

- A. Last stage of plasmolysis
- B. Mid stage of plasmolysis
- C. Zero hour for inception of plasmolysis
- D. Intial stage of plasmolysis.

Answer: B



Watch Video Solution

417. Basis of stomatal opening is

- A. Endosmosis

B. Exosmosis

C. Wall pressure

D. Diffusion pressure

Answer: D



Watch Video Solution

418. The movement of water molecules from a region of high concentration to a region of low concentration through a semipermeable membrane is due to

A. Imbibition

B. Diffusion

C. Osmosis

D. Plasmolysis

Answer: C



[Watch Video Solution](#)

419. Which of the following equations is correct in respect of osmotic phenomenon

A. $DPD = OP - TP$

B. $DPD = OP + TP$

C. $DPD = OP \times TP$

D. $DPD = OP \div TP$

Answer: C



[Watch Video Solution](#)

420. X and Y are adjacent living cells. The cell X has solute potential (Ψ_s) of -9 bars and pressure potential (Ψ_p) of bars whereas cell Y has solute potential (Ψ_s) of -8 bars and pressure potential (Ψ_p) of 5 bars. What will be the direction of water movement between these cells

- A. Cell X to cell Y
- B. Cell Y to cell X
- C. Does not move in any direction
- D. Moves in both directions.

Answer: A

 [Watch Video Solution](#)

421. Water vapour comes out from the plant leaf through the stomata} opening. Through the same stomata! opening carbon dioxide dif- fuses into the plant during photosynthesis. Reason out the above statements using one of following options

- A. One process occurs during day time and the other at night
- B. Both the processes cannot happen simultaneously
- C. Both processes can happen together because the diffusion coefficients of water vapours and CO_2 are different

D. The above processes happen only during night time

Answer: B



[Watch Video Solution](#)

422. A few drops of sap were collected by cutting across a plant stem by a suitable method. The sap was tested chemically. Which one of the following test results indicates that it is phloem sap ?

- A. Absence of sugar
- B. Acidic
- C. Alkaline
- D. Low refractive index.

Answer: C



[Watch Video Solution](#)

423. A plasmolysed cell can be deplasmolysed by placing it in

- A. Isotonic solution
- B. Saturated solution
- C. Pure water or hypotonic solution
- D. Hypertonic solution .

Answer: C



[Watch Video Solution](#)

424. Assertion : Translocation of sugar from source to sink is defined as pressure flow hypothesis. Reason : Translocations of the solutes is facilitated through living phloem sieve tube cells

- A. If both are true with reason being correct explanation (A).
- B. both true but reason is not correct explanation (B),
- C. Assertion true but reason is wrong (C),

D. both are wrong (D),

Answer: C



[Watch Video Solution](#)

425. Which of the following facilitates opening of stomatal aperture ?

- A. Contraction of outer wall of guard cells
- B. Decreases in turgidity of guard cells
- C. Radial orientation of cellulose microfibrils in the cell wall of guard cells
- D. Longitudinal orientation of cellulose microfibrils in the cell wall of guard cell

Answer:



[Watch Video Solution](#)

1. Increase in temperature

- A. Increases osmotic pressure
- B. Decreases osmotic pressure
- C. Has no effect on osmotic pressure
- D. Causes endosmosis

Answer: A



[Watch Video Solution](#)

2. Osmotic pressure of 0.1 M sucrose solution is -2.3 bars . What is the likely osmotic potential of 0.1 M NaCl ?

- A. - 1.2 bars
- B. - 2.3 bars

C. -4.6 bars

D. $+2.3$ bars

Answer:



[Watch Video Solution](#)

3. The plant imbibants are mainly made up of

A. Hydrophilic colloids

B. Hydrophobic colloids

C. Stored electrolytes

D. Stored nonelectrolytes

Answer:



[Watch Video Solution](#)

4. Osmosis was discovered by

- A. Nollet
- B. Pfeffer
- C. Ranner
- D. Meyer

Answer:



[Watch Video Solution](#)

5. A positively charged colloid will imbibe maximum at

- A. 9 pH
- B. 7 pH
- C. 4 pH
- D. pH has no influence on imbibition .

Answer:



[Watch Video Solution](#)

6. Which one is used for measuring osmotic potential of living cells ?

- A. Vapour pressure
- B. Evident plasmolysis
- C. Incipient plasmolysis
- D. Limiting plasmolysis

Answer:



[Watch Video Solution](#)

7. In case T.P. is less than the mixmum W.P., the cell will

- A. Undergo plasmolysis

B. Bursts

C. Swell and become fully turgid

D. Not become fully turgid

Answer:



[Watch Video Solution](#)

8. Which one imbibes maximum ?

A. Agar agar

B. Cellulose

C. Protein

D. Starch

Answer:



[Watch Video Solution](#)

9. Maximum osmotic pressure/osmotic potential is reported in

- A. Aerua
- B. Rhizophore
- C. Atriplex
- D. Chenopodium

Answer:



Watch Video Solution

10. Osmotic pressure of a cell is zero when

- A. T.P. is maximum
- B. D.P.D. is maximum
- C. T.P. is zero
- D. Not possible .

Answer:



[Watch Video Solution](#)

11. Amount of water transpired can be known with the help of

- A. Porometer
- B. Psychrometer
- C. Conductivity meter
- D. Dendrograph

Answer:



[Watch Video Solution](#)

12. In a well watered soil, the plant show loss of turgidity during noon. It is

- A. Incipient wilting
- B. Ethylene mediated wilting
- C. Sleep disease
- D. Temporary wilting

Answer:

 [Watch Video Solution](#)

13. Concrete is produced from a mixture of cement, water and small stones. Small amount of gypsum, $CaSO_4 \cdot 2H_2O$ is added in cement production to improve the subsequent hardening of concrete. The elevated temperature during the production of cement may lead to the formation of unwanted hemihydrate $CaSO_4 \cdot \frac{1}{2}H_2O$ according to reaction.



The $\Delta_f H^\ominus$ of $CaSO_4 \cdot 2H_2O(s)$, $CaSO_4 \cdot \frac{1}{2}H_2O(s)$, $H_2O(g)$

are $-2021.0 \text{ kJ mol}^{-1}$, $-1575.0 \text{ kJ mol}^{-1}$ and $-241.8 \text{ kJ mol}^{-1}$,

respectively. The respective values of their standard entropies are 194.0, 130.0 and $188.0JK^{-1}mol^{-1}$. The values of $R = 8.314JK^{-1}mol^{-1} = 0.0831L\text{ bar }mol^{-1}K^{-1}$.

Answer the following questions on the basis of above information.

Heat change occurring during conversion of 1kg of $CaSO_4 \cdot 2H_2O(s)$ (molar mass $172gmol^{-1}$) of $CaSO_4 \frac{1}{2}H_2O(s)$ is equal to

- A. Scarth
- B. Sayre
- C. Lloyd
- D. Steward

Answer:

 [Watch Video Solution](#)

14. In herbaceous mesophytes, cuticular transpiration accounts for

- A. 3 -10%

B. 10- 15%

C. 50-97%

D. 20-50%

Answer:



[Watch Video Solution](#)

15. The pH which favours hydrolysis of starch in guard cells is

A. 3

B. 5

C. 7.5

D. 9.5

Answer:



[Watch Video Solution](#)

16. The hormone required for stomatal opening is

- A. Auxin
- B. Cytokinin
- C. Abscisic acid
- D. Ethylene

Answer:



Watch Video Solution

17. Porometer was developed by

- A. Francis Darwin
- B. Charles Darwin
- C. Ganong
- D. Bose.

Answer:



[Watch Video Solution](#)

18. Margins of mature colocasia leaves appear withered/necrotic due to

- A. Deficiency of a mineral
- B. Excess of a mineral
- C. Excessive transpiration
- D. Guttation salts.

Answer:



[Watch Video Solution](#)

19. Cobalt chloride paper test for transpiration was developed by

- A. Stahl

B. Curtis

C. Kramer

D. Loftfield

Answer:



[Watch Video Solution](#)

20. At R.H. 30% the stomata will

A. Open

B. Close

C. Open in the presence of light

D. Close in dark only

Answer:



[Watch Video Solution](#)

21. The term root pressure was coined by

- A. Stephen Hales
- B. Atkins
- C. Renner
- D. Kramer.

Answer:



[Watch Video Solution](#)

22. Water present in a loam soil at field capacity is

- A. 15-25%
- B. 25-35%
- C. 35-45%
- D. 10-15%

Answer:



[Watch Video Solution](#)

23. Water potential of soil solution in common soil is

- A. -1 to -3 bars
- B. 1 to 3 bars
- C. -0.1 to -0.3 bars
- D. 0.1 to 0.3 bars

Answer:



[Watch Video Solution](#)

24. At PWP, a loam soil contains water

- A. 0.15

B. Negligible

C. 0.05

D. 0.1

Answer:



[Watch Video Solution](#)

25. What prevent wall to wall (apoplast) movement of absorbed water?

A. Osmotic apparatus of root hair cells

B. Cortical cells

C. Pericycle cells

D. Endodermal cells.

Answer:



[Watch Video Solution](#)

26. The structure present in endodermal cells of root which prevents apoplastic movement of water is

- A. Casparian strip
- B. Passage cells
- C. Central vacuoles
- D. Plasmodesmata

Answer:



[Watch Video Solution](#)

27. A cell placed in hypertonic solution will :

- A. Initially get plasmolysed but later becomes turgid if actively metabolising
- B. Get plasmolysed and die
- C. Remain turgid if treated with auxin

D. All the above

Answer:



Watch Video Solution

28. Capillary water is present in soil interspaces with a diameter of

A. (a) Less than 20μ

B. (b) $20 - 50\mu$

C. (c) Less than 0.2μ

D. (d) More than 50μ

Answer:



Watch Video Solution

29. Xylem channels of the rootlets maintain a low water potential due to

- (a) Maintenance of high salt content
- (b) Presence of negative pressure or water tension
- (c) Both a and b
- (d) Occurrence of positive pressure

A. Maintenance of high salt content

B. Presence of negative pressure or water tension

C. Both A and B

D. Occurrence of positive pressure .

Answer:



[Watch Video Solution](#)

30. A water-logged soil often causes wilting of leaves due to

A. Nonavailability of oxygen to roots

- B. Nonabsorption water by roots
- C. Production of ethylene precursor by roots
- D. Both B and C

Answer:



[Watch Video Solution](#)

31. Absorption of water from cut ends of stems/shoots disapproves the theory of

- (a) Capillarity
- (b) Cohesion-tension
- (c) Root pressure
- (d) Atmospheric pressure

- A. Capillarity
- B. Cohesion-tension
- C. Root pressure

D. Atmospheric pressure .

Answer:



[Watch Video Solution](#)

32. Ascent of sap is

A. a) Pholem

B. b) Cortex

C. c) Walls of tracheary elements

D. d) Lumens of tracheary elements

Answer:



[Watch Video Solution](#)

33. The ascent of mercury column in atmometer proves

- A. Transpiration pull
- B. Cohesion-tension theory
- C. Capillary theory of ascent of sap
- D. Atmospheric pressure theory of ascent of sap

Answer:

 [Watch Video Solution](#)

34. Air bubbles are formed in the rising column of water due to

- A. Negative pressure or tension
- B. Salts dissolved in water
- C. Cooling effect of transpiration
- D. Evaporation of water

Answer:

 [Watch Video Solution](#)

35. Tensile strength of water in the conducting channels of plant is

- A. 15000-20000 atm
- B. 1500 - 2000 atm
- C. 250 - 500 atm
- D. 50 - 200 atm

Answer:



[Watch Video Solution](#)

36. Who found that overlapping cuts do not hinder ascent of sap

- A. Askenasy
- B. Preston
- C. Mac Dougal

D. Priestley

Answer:



[Watch Video Solution](#)

37. Value of water tension/transpiration pull developed in plants is

A. 1-2 atm

B. 2-10 ATM

C. 15 -20 atm

D. 30 -60 atm

Answer: D



[Watch Video Solution](#)

38. Who gave the imbibition theory of ascent of sap

- A. Unger
- B. Dixon and Joly
- C. Bose
- D. Godlewaki

Answer:

 [Watch Video Solution](#)

39. Who proved that living cells are not involved in ascent of sap

- A. Sachs
- B. Boucherie
- C. Strasburger
- D. Both B and C

Answer: C

 [Watch Video Solution](#)

40. Absorption lag appears during

- A. Night
- B. Noon
- C. Early morning
- D. Late evening

Answer:



Watch Video Solution