



BIOLOGY

BOOKS - DINESH PUBLICATION ENGLISH

VERTEBRATA-AGNATHA AND PISCES

Multiple Choice Questions

1. Flying fish is

A. Torpedo

B. Scoliodon

C. Anguila

D. Exocoetus

Answer: D



Watch Video Solution

2. Lamprey (Petromyzon) belongs to

A. Chondrichthyes

B. Osteichytes

C. Agnatha

D. Amphibia

Answer: C



Watch Video Solution

3. Agnatha or Cyclostomata are characterised by

- A. Absence of jaws and presence of suctorial mouth
- B. Presence of suctorial mouth, absence of jaws, presence of single nostril and unpaired fins
- C. Absence of mouth, presence of single nostril
- D. Round mouth with triradiate lips

Answer: B



Watch Video Solution

4. Non-tetrapod vertebrates contain

- A. Osteichytes and chondrichthyes
- B. Agnatha, osteichthyes and chondrichthyes
- C. Agnatha and chondrichthyes
- D. Agnatha

Answer: B



Watch Video Solution

5. Cartilaginous fish has gill covers.

- A. Fins
- B. Gill cover/operculum
- C. Scales
- D. Mouth

Answer: B



Watch Video Solution

6. Which is a connecting link between fishes and amphibians

A. Catfish

B. Gambusia

C. Protopterus

D. Clupea

Answer: C



Watch Video Solution

7. Potamodromous fishes migrate from

- A. Fresh to fresh water
- B. Fresh to marine water
- C. Marine to fresh water
- D. Marine to marine water

Answer: A



Watch Video Solution

8. Oceanodromous fishes migrate from

- A. Fresh to fresh water
- B. Fresh to marine water

C. Marine to fresh water

D. Marine to marine water

Answer: D



Watch Video Solution

9. Catadromous fishes migrate from

A. Fresh to fresh water

B. Fresh to marine water

C. Marine to fresh water

D. Marine to marine water

Answer: B



[Watch Video Solution](#)

10. Anadromous fish migrate from

- A. Fresh to fresh water
- B. Fresh to marine water
- C. Marine to fresh water
- D. Marine to marine water

Answer: C



[Watch Video Solution](#)

11. Which is a catadromous fish?

A. Hilsa

B. Mystus

C. Anguilla

D. Chana

Answer: C



Watch Video Solution

12. Which is an anadromous fish?

A. Hippocampus

B. Petromyzon

C. Exocoetus

D. Anabas

Answer: B



Watch Video Solution

13. A scale-less fish is

A. Scoliodon

B. Remora

C. Catfish

D. Labeo

Answer: C



Watch Video Solution

14. In fishes the exoskeleton is made of

A. Cartilage

B. Bones

C. Hairs

D. Scales

Answer: D



Watch Video Solution

15. Chondrichthyes can be differentiated from osteichthydes externally by

A. Naked gills

B. Heterocercal tail

C. Ventral mouth

D. All the above

Answer: D



Watch Video Solution

16. Fish characteristic is

A. Dermal scales

B. Epidermal scales

C. Lateral line organs

D. Both A and C

Answer: D



Watch Video Solution

17. Petromyzon belongs to class

- A. Osteichthyes
- B. Chondrichthyes
- C. Cyclostomata
- D. Amphibia

Answer: C



Watch Video Solution

18. A marine cartilaginous fish that can produce electric current is

- A. Trygon
- B. Torpedo
- C. Pristis
- D. All the above

Answer: B



Watch Video Solution

19. Sharkes are

- A. Ovoviviparous

B. Viviparous

C. Oviparous

D. None of the above

Answer: A



Watch Video Solution

20. Hippocampus is a

A. Coelenterate

B. Bony fish

C. Mammal

D. Reptile

Answer: B



Watch Video Solution

21. Lateral line sense organs are present in

- A. Fishes
- B. Fishes and amphibian larvea
- C. Cartilaginous fishes and amphibian larvea
- D. Fishes and larvea of other vertebrates

Answer: B



Watch Video Solution

22. middle ear and tympanum are absent in

- A. Dog fish
- B. Cat fish
- C. Bony fishes
- D. All the fishes

Answer: D



Watch Video Solution

23. A homocercal tail is found in

- A. Teleosts
- B. Sharks

C. Rays

D. Lung fishes

Answer: A



Watch Video Solution

24. Parental care by males is found in

A. Hippocampus

B. Labeo

C. Anabas

D. Scoliodon

Answer: A



[Watch Video Solution](#)

25. Paired fins of fishes are

- A. Caudal and ventral
- B. Dorsal and ventral
- C. Pectoral and pelvic
- D. Caudal and pectoral

Answer: C



[Watch Video Solution](#)

26. Bony fishes are

- A. Cloaca
- B. Air bladder
- C. Placoid scales
- D. Ventral mouth

Answer: B



Watch Video Solution

27. The sucker of Remora is modification of

- A. Dorsal fin
- B. Pectoral fin
- C. Mouth
- D. Operculum

Answer: A



Watch Video Solution

28. Vertebrate is also called

- A. Acraniata
- B. Craniata
- C. urochordates
- D. Both B and C

Answer: D



Watch Video Solution

29. Internal naris is present in

- A. Agnatha
- B. Chondrichthyes and Osteichthyes
- C. Choanichthyes
- D. None of the above

Answer: C



Watch Video Solution

30. Latimeria is

- A. Coelacanth
- B. Has two dorsal fins

C. Possesses two pairs of external nares

D. All the above

Answer: D



Watch Video Solution

31. In latimeria, the fins are

A. All lobed

B. Non-lobed

C. Lobed except dorsal fins

D. Lobed except pelvic fins

Answer: C



[Watch Video Solution](#)

32. Latimeria swims by means of

- A. Flapping movement of its pectoral and pelvic fins
- B. Rotational movement of its pectoral fins
- C. Flapping movement of pectoral fins and rotational movement of pelvic fins
- D. Rotational movement of tail fin

Answer: B



[Watch Video Solution](#)

33. Lung Fish of Africa is

A. Protopterus

B. Lepidosiren

C. Neoceratodus

D. Muraena

Answer: A



Watch Video Solution

34. Lung fish found in Australia is

A. Lepidosiren

B. Neoceratodus

C. Muraena

D. Cyprinus

Answer: B



Watch Video Solution

35. Lepidosiren is

- A. Mackeral
- B. Sardine
- C. American lung fish
- D. Pilot fish

Answer: C



Watch Video Solution

36. Salmon is

- A. Wallogonia
- B. Sardinella
- C. Dussumieria
- D. Scomber

Answer: B



Watch Video Solution

37. In lung fishes, the heart is

- A. One chambered
- B. Two chambered

C. Three chambered

D. Incompletely four chambered

Answer: C



Watch Video Solution

38. Lung fishes have

A. Uncovered well developed gills

B. Covered well developed gills

C. Reduced but covered gills

D. Air bladder

Answer: D



[Watch Video Solution](#)

39. Lung fishes

- A. Seldom swim
- B. Swim like eels
- C. Creep over paired fins
- D. Both B and C

Answer: D



[Watch Video Solution](#)

40. Dorsal and ventral fins are continuous with caudal fin in

A. Lung fishes

B. Eel

C. Both A and B

D. Sea Horse

Answer: C



Watch Video Solution

41. Pregnant male is the term used for

A. Gambusia

B. Muraena

C. Hippocampus

D. Echeneis

Answer: C



Watch Video Solution

42. Hippocampus has

- A. Head at right angles to body
- B. Prehensile tail
- C. Only dorsal fin and reduced pectoral fins
- D. All the above

Answer: D



Watch Video Solution

43. A tubular snout with terminal mouth occurs in

- A. Solea
- B. Hippocampus
- C. Echeneis
- D. Anguilla

Answer: B



Watch Video Solution

44. Exocetus is able to leap into air by means of

- A. Large strong pectoral fins
- B. Powerful tail

C. Pelvic fins

D. Suddenly flashing of dorsal and ventral fins

Answer: A



Watch Video Solution

45. Climbing Perch is able to creep over land by means of

A. Pectoral fins

B. Opercular spines

C. Both A and B

D. Lobed fins

Answer: C



[Watch Video Solution](#)

46. Dorsal and ventral fins of Anabas have

- A. Stiff rays
- B. Soft rays
- C. Stiff rays in anterior region and soft rays in posterior region
- D. Soft rays in anterior region and stiff rays in posterior region

Answer: C



[Watch Video Solution](#)

47. A herbivorous fish is

- A. Labeo
- B. Rita
- C. Anabas
- D. All the above

Answer: A



Watch Video Solution

48. As compared to cartilaginous fishes, bony fishes have dorsal fin

- A. Single instead of two
- B. Two instead of one

C. Single in both

D. Two in both

Answer: A



Watch Video Solution

49. Pelvic fins of bony fishes are

A. Near tail

B. Near ventral fins

C. In middle

D. Anterior below pectoral fins

Answer: D



[Watch Video Solution](#)

50. Unpaired external naris occurs in

- A. Petromyzon
- B. Torpedo
- C. Anabas
- D. Solea

Answer: A



[Watch Video Solution](#)

51. Scroll valve is present in

- A. Respiratory system of cartilaginous fishes
- B. Intestine of cartilaginous fishes
- C. Intestine of bony fishes
- D. Respiratory system of bony fishes

Answer: B



Watch Video Solution

52. In Torpedo or Electric Ray the electric organs are modified

- A. Nerve nets
- B. Cartilage complexes
- C. Branchial muscles

D. Respiratory centres

Answer: C



Watch Video Solution

53. In Sting Ray, the stinger is modified

A. Dorsal fin

B. Ventral fin

C. Anal fin

D. Caudal fin

Answer: A



Watch Video Solution

54. In Shark, mouth and nares are

- A. Ventral and dorsal
- B. Terminal and dorsal
- C. Ventral and ventral
- D. Dorsal and ventral

Answer: C



Watch Video Solution

55. Claspers of male Scoliodon develop in relation to

- A. Pectoral fins

B. Pelvic fins

C. Anal or ventral fin

D. Dorsal fins

Answer: B



Watch Video Solution

56. Rabbit Fish Chimaera is connecting link between

A. Cartilaginous and bony fishes

B. Bony fished and lung fished

C. Lung fished and amphibians

D. Cyclostomates and chondrichthyes

Answer: A



Watch Video Solution

57. Caudal fins is heterocercal in bony fish

A. Solea

B. Anabas

C. Anguilla

D. Exocoetus

Answer: D



Watch Video Solution

58. Cartilaginous fishes are

- A. Ureotelic
- B. Ammonotelic
- C. Uricotelic
- D. Aminotelic

Answer: A



Watch Video Solution

59. A larvaevorous fish is

- A. Gambusia
- B. Solea

C. Anabas

D. Diodon

Answer: A



Watch Video Solution

60. Lophius occurs in

A. Fresh water ponds

B. Streams

C. Sea bottom

D. Sea shores

Answer: C



[Watch Video Solution](#)

61. Lophius is popularly called

- A. Angler fish
- B. Devil fish
- C. Frog fish
- D. All the above

Answer: D



[Watch Video Solution](#)

62. Angler fish attracts its preys through

- A. Bait present over the tip of first ray
- B. Leaf like skin flaps
- C. Phosphorescence
- D. All the above

Answer: D



Watch Video Solution

63. Lates occurs in

- A. Sea
- B. Estuary
- C. Fresh water ponds
- D. Muddy waters

Answer: B



Watch Video Solution

64. Lata fish is

A. Channa

B. Lates

C. Heteropneustes

D. Catla

Answer: A



Watch Video Solution

65. A fish capable of hibernating during drought is

A. Heteropneustes

B. Channa

C. Catla

D. Lates

Answer: B



Watch Video Solution

66. A fish of muddy waters is

A. Catla

B. Labeo

C. Heteropneustes

D. Diodon

Answer: C



Watch Video Solution

67. A fresh water fish which can inflict injury to its prey and other animals is

A. Clarias

B. Heteropneustes

C. Solea

D. Gambusia

Answer: B



Watch Video Solution

68. A filter feeder shark is

- A. Carcharodon
- B. Carcharinus
- C. Whale Shark
- D. Scoliodon

Answer: C



Watch Video Solution

69. Rhincodon is

- A. Basking Shark
- B. Whale Shark
- C. White Shark
- D. Indian Shark

Answer: B



Watch Video Solution

70. The largest fish is

- A. Cetorhinus
- B. Carcharinus

C. Carchorodon

D. Rhincodon

Answer: D



Watch Video Solution

Revision Questions

1. Which is viviparous

A. Bony Fish

B. Shark

C. Lung Fish

D. Frog

Answer: B



Watch Video Solution

2. Which one is a fish ?

A. Sea Horse

B. Sea Cow

C. Sea Cucumber

D. Sea Urchin

Answer: A



Watch Video Solution

3. Gambusia is

- A. Parasitic Fish
- B. Pest of fishes
- C. Fish predator of mosquito larva
- D. A mosquito spreading yellow fever

Answer: C



Watch Video Solution

4. A living fossil is

- A. Dog Fish
- B. Flying Fish

C. Dodo

D. Coelacanth/Latimeria

Answer: D



Watch Video Solution

5. Branch of biology dealing with study of fishes is

A. Fishery

B. Toxicology

C. Ichthyology

D. Piscology

Answer: C



[Watch Video Solution](#)

6. A vertebrate having entire cartilaginous skeleton is

A. Scoliodon

B. Rana

C. Labeo

D. Dolphin

Answer: A



[Watch Video Solution](#)

7. In fishes the kidney is

- A. Pronephric
- B. Metanephric
- C. Mesonephric
- D. Nephridial

Answer: C



Watch Video Solution

8. A common characteristic of all vertebrates is

- A. Presence of skull
- B. Division of body into head, neck trunk and tail
- C. Presence of two pairs of functional appendages
- D. Body is covered with an exoskeleton

Answer: A



Watch Video Solution

9. Which is cold blooded animal

A. Pigeon

B. Kangaroo

C. Shark

D. Rabbit

Answer: C



Watch Video Solution

10. Common name of fish Anguilla is

- A. Rohu
- B. Eel
- C. Hilsa
- D. Bombay Duck

Answer: B



Watch Video Solution

11. Sea Horse is an example of

- A. Mammalia
- B. Reptilia

C. Aves

D. Pisces

Answer: D



Watch Video Solution

12. Endoskeleton is cartilaginous in

A. Elasmobranchs

B. Dipnoi

C. Mollusca

D. Osteichthyes

Answer: A



[Watch Video Solution](#)

13. Electric organs occur in

- A. Sharks
- B. Goldfish
- C. Porpoises
- D. Rays

Answer: D



[Watch Video Solution](#)

14. Isinglass is a product obtained from air bladder of

A. Air bladder of fishes

B. Scales of fishes

C. Liver of Frog

D. Cartilage of shark

Answer: A



Watch Video Solution

15. Which one is migratory fish

A. Shark

B. Ribbon fish

C. Salmon

D. Carp

Answer: C



Watch Video Solution

16. Shagreen is skin of

A. Cod fish

B. Sole fish

C. Shark

D. Whale

Answer: C



Watch Video Solution

17. A teleost fish can be differentiated externally from an elasmobranch by

- A. Endoskeleton
- B. Exoskeleton
- C. Operculum
- D. Stream-lined body

Answer: C



Watch Video Solution

18. Anus opens into a central chamber in vertebrates called

- A. Rectum

B. Cloaca

C. Caecum

D. None of the above

Answer: B



Watch Video Solution

19. Lateral line occurs in

A. Star fish

B. Jelly fish

C. Dog fish

D. All the above

Answer: C



Watch Video Solution

20. First vertebrates originated during

- A. Devonian
- B. Silurian
- C. Carboniferous
- D. Ordovician

Answer: D



Watch Video Solution

21. Bony fishes are

- A. Ammonotelic
- B. Ureotelic
- C. Uricotelic
- D. Both B and C

Answer: A



Watch Video Solution

22. Which is not found in vertebrates?

- A. Gill opening
- B. Bilateral symmetry

C. Cnidoblasts

D. Body scales

Answer: C



Watch Video Solution

23. Which are primitive vertebrates?

A. Amphioxus and Herdmania

B. Doliolum and Scoliodon

C. Balanoglossus and Salpa

D. Petromyzon and Myxine

Answer: D



[Watch Video Solution](#)

24. Fertilization is internal in

- A. Cat Fish
- B. Dog Fish
- C. Frog
- D. Toad

Answer: B



[Watch Video Solution](#)

25. Scoliodon is called Dog Fish because of its

A. Carnivorous nature

B. Mouth

C. Power of smell

D. Gait

Answer: C



Watch Video Solution

26. Which one is age of fish?

A. Devonian

B. Silurian

C. Permian

D. Cretaceous

Answer: A



Watch Video Solution

27. An example of agnatha (jawless vertebrate)/cyclostomate is

A. Labeo rohita

B. Scoliodon

C. Rana tigrina

D. Petromyzon.

Answer: D



Watch Video Solution

28. Vertebrates do not possess

- A. Dorsal heart
- B. Ventral heart
- C. Vertebral column
- D. Coelom

Answer: A



Watch Video Solution

29. In fast swimming fishes, propulsion is mainly due to

- A. Pelvic fins
- B. Caudal fin

C. Dorsal fin

D. Pectoral fins

Answer: B



Watch Video Solution

30. Elasmobranchs lack

A. Gill slits

B. Operculum

C. Notochord

D. Placoid scales

Answer: B



[Watch Video Solution](#)

31. A cartilaginous fish with an operculum is

A. Scoliodon

B. Chimaera

C. Torpedo

D. Trygon

Answer: B



[Watch Video Solution](#)

32. Herbivorous carps are

- A. Labeo and Hilsa
- B. Cattle and Magur
- C. Shark and Singla
- D. All the above

Answer: A



Watch Video Solution

33. First vertebrates are

- A. Ostracodermi
- B. Placodermi
- C. Cyclostomates
- D. Chondrichthyes

Answer: A



Watch Video Solution

34. An edible fresh water teleost is

- A. Shark
- B. Ray and Skate
- C. Catla catla
- D. Hilsa hilsa

Answer: C



Watch Video Solution

35. Match the columns

Column I

Column II

a. Pseudopodia

p. Mollusca

b. Parapodia

q. Chondrichthyes

c. Muscular Foot

r. Protozoa

d. Fins

s. Annelids

A. $a - p, b - r, c - s, d - q$

B. $a - r, b - s, c - p, d - q$

C. $a - r, b - p, c - s, d - p$

D. $a - s, b - r, c - q, d - p$

Answer: B



Watch Video Solution

36. An indigenous fish used in biological control is

A. Catla

B. Labestes

C. Gambusia

D. Aplocheilus

Answer: B



Watch Video Solution

37. Fishes with swim bladder without direct communication with exterior and where there is little separation of secretory and absorbent parts are

A. Physostomes

B. Physoclists

C. Euphysoclists

D. Paraphysoclists

Answer: D



Watch Video Solution

38. Stenohaline fishes are

A. Marine fishes only

B. Those which tolerate narrow range salinity

C. Those which tolerate wide range salinity

D. Fresh water fishes only

Answer: B



[Watch Video Solution](#)

39. Salmon fishes are also known as

- A. Trout
- B. Cod
- C. Cartilaginous fishes
- D. Bony fishes

Answer: A



[Watch Video Solution](#)

40. Which one has a brood pouch for caring of eggs?

- A. Anabas
- B. Scoliodon
- C. Hippocampus
- D. Cutle fish

Answer: C



Watch Video Solution

41. The aquatic organism with prehensile tail is

- A. Chamaelon
- B. Macaca
- C. Exocoetus
- D. Hippocampus

Answer: D



Watch Video Solution

42. A fresh water fish is

A. Chanos

B. Hilsa

C. Clarias

D. Rostelliger

Answer: C



Watch Video Solution

43. Which one has heterocercal tail

- A. Dipnoi
- B. Bony fish
- C. Cartilaginous fish
- D. All the above

Answer: C



Watch Video Solution

44. One of the following is not a fish

- A. Sucker fish
- B. Flat fish

C. Flying fish

D. Cuttle fish

Answer: D



Watch Video Solution

45. Which one belongs to dipnoi?

A. Lung fish

B. Cat fish

C. Rat fish

D. Star fish

Answer: A



Watch Video Solution

46. [A] : Lateral line system is found in fish and aquatic larval amphibians.

[R]: This system consists of receptors derived from ectoderm

- A. both true but reason not correct explanation
- B. assertion true but reason wrong
- C. both wrong
- D. both true

Answer: B



Watch Video Solution

47. Fishes have very poor sense organs for

- A. Sound perception
- B. Vibrations
- C. Odours
- D. Light perception.

Answer: A



Watch Video Solution

48. Which one is a true fish?

- A. Cuttle fish
- B. Dog fish

C. Jelly fish

D. Silver fish

Answer: B



Watch Video Solution

49. Tooth-shaped scales are

A. Cycloid

B. Ctenoid

C. Ganoid

D. Placoid

Answer: D



[Watch Video Solution](#)

50. Which of the following statements is true

- A. All chordates are vertebrates
- B. All vertebrates are chordates
- C. Invertebrates possess a tubular nerve cord
- D. Non-chordates have a vertebral column

Answer: B



[Watch Video Solution](#)

51. Growing more than one species of fish in the same water body is

- A. Morigulture
- B. Aquaculture
- C. Monoculture
- D. Polyculture

Answer: D



Watch Video Solution

52. Which one is a true fish?

- A. Sea Horse
- B. Bombay Duck
- C. Salmon
- D. All the above

Answer: D



Watch Video Solution

53. In cartilaginous fishes, restiform (rope-like) bodies occur in

A. Heart

B. Brain

C. Eyes

D. Intestine

Answer: B



Watch Video Solution

54. Which is unique in fishes ?

- A. Gills
- B. Tails
- C. Lateral line sensory organs
- D. Lungs

Answer: C



Watch Video Solution

55. Air bladder is found in which of the following fishes?

- A. Torpedo
- B. Scoliodon

C. Anabas

D. Elasmobranch

Answer: C



Watch Video Solution

56. Scoliodon is called Dog Fish because of its

A. Dog Fish

B. Cuttle Fish

C. Jelly Fish

D. Whale Fish

Answer: A



[Watch Video Solution](#)

57. In elasmobranchs, oviducts are called

- A. Wolffian ducts
- B. Fallopin tubes
- C. Mullerian ducts
- D. Mullerian bodies

Answer: C



[Watch Video Solution](#)

58. Assertion: Fish meal is a rich source of proteins for cattle and poultry.

Reason: Fish meal is produced from non-edible parts of fish like fins, gills, etc.

- A. both true but reason is not correct explanation
- B. assertion is true but reason is wrong
- C. and both are wrong
- D. both true

Answer: B



Watch Video Solution

59. Choose the cat fish from the following

- A. Labeo rohita
- B. Catla catla

C. *Cirrhina mrigala*

D. *Wallago attu*

Answer: D



Watch Video Solution

60. Placoid scales are found in

A. Cartilaginous fishes/sharks/chondrichthyes

B. Bony fishes/osteichthyes

C. Lung fish

D. All the above

Answer: A



[Watch Video Solution](#)

61. Pancreas is absent in

- A. Amphibia
- B. Osteichthyes
- C. Chondrichthyes
- D. Cyclostomata

Answer: D



[Watch Video Solution](#)

62. Which one is an incorrect match?

A. Silver Fish-Arthropoda

B. Shell Fish-Pisces

C. Cuttle Fish-Mollusca

D. Star Fish-Echinodermata

Answer: B



Watch Video Solution

63. Hippocampus (Sea Horse) belong to the class

A. Agnatha

B. Chondrichthyes

C. Osteichthyes

D. Mammals

Answer: C



Watch Video Solution

64. Cartilaginous fishes belong to the class

A. Osteichthyes

B. Agnatha

C. Dipnoi

D. Chondrichthyes

Answer: D



Watch Video Solution

65. Which is true?

- A. All living members of class cyclostomata are parasites on some fishes
- B. There are about 2000 species in the class osteichthyes
- C. Ciona belongs to subphylum cephalo chordata
- D. Arthropods are diploblastic animals

Answer: A



Watch Video Solution

66. Illicium is modified

- A. Dorsal fin

B. First dorsal spine

C. Scales

D. Caudal fin

Answer: B



Watch Video Solution

67. Which one of the following is not a characteristic feature of the sub-phylum vertebrata?

A. Dorsal tubular nerve chord

B. Ventral muscular heart

C. Notochord in adult

D. Kidneys

Answer: C



Watch Video Solution

68. Which is correctly paired?

- A. Pristis-Saw fish
- B. Trygon-Monitor
- C. Ichthyophis-Crow
- D. Varanus-String Ray

Answer: A



Watch Video Solution

69. Bombay duck is a

- A. Bird
- B. Fish
- C. Reptile
- D. Mammal

Answer: B



Watch Video Solution

70. Sting Ray is

- A. Trygon
- B. Torpedo

C. Pristis

D. Syllum

Answer: A



Watch Video Solution

71. Bony fishes can stay at a particular depth in water without beating their pectoral and pelvic fins due to the presence of

A. Operculum

B. Tympanum

C. Pneumatic bones

D. Swim bladder

Answer: D



Watch Video Solution

72. Number of gills found in osteichthyes is

- A. Two pairs
- B. Four pairs
- C. Five pairs
- D. 6-15 pairs

Answer: B



Watch Video Solution

73. Which one of the following is not a major carp?

- A. *Cirrhinus mrigala*
- B. *Labeo rohita*
- C. *Puntius ticto*
- D. *Ctenopharyngodon idella*

Answer: C



Watch Video Solution

74. Amniota includes

- A. Fishes and amphibians
- B. Reptiles and birds

C. Birds and mammals

D. Reptiles and mammals

Answer: A



Watch Video Solution

75. Glomerular kidney occurs in fish

A. Tilapia

B. Cirrhinus

C. Sphyrna

D. Exocoetus

Answer: D



[Watch Video Solution](#)

76. What is true of Neoceratodus?

- (a) It is a crosspterygian fish
- (b) It is found in river chuturnnac
- (c) It does not exhibit aestivation
- (d) It is a ureotelic animal.

A. a and b

B. b and d

C. a and c

D. a and d

Answer: C



[Watch Video Solution](#)

77. Pectoral fins are enlarged in

- A. Hippocampus
- B. Exocoetus
- C. Coccoosteus
- D. Scoliodon

Answer: B



Watch Video Solution

78. In Sharks, which one of the following is absent?

- A. Claspers

B. Cartilaginous endoskeleton

C. Placoid scales

D. Air bladder

Answer: D



Watch Video Solution

79. Isinglass is employed in

A. Preparation of wines

B. Distillation of wines

C. Preservation of wines

D. Clearing of wines

Answer: D



Watch Video Solution

80. Heart is two chambered in

A. Fishes

B. Amphibians

C. Reptiles

D. Birds

Answer: A



Watch Video Solution

81. Ampullae of Lorenzini are present in

- A. Fish
- B. Lizard
- C. Frog
- D. Rabbit

Answer: A



Watch Video Solution

82. A viviparous fish is

- A. Labeo
- B. Clarias

C. Gambusia

D. Exocoetus

Answer: C



Watch Video Solution

83. Sharks and Rays belong to class

A. Cyclostomata

B. Osteichthyes

C. Amphibia

D. Chondrichthyes

Answer: D



[Watch Video Solution](#)

84. Which one of the following pairs of animals comprises 'jawless fishes'?

- A. Mackerels and Rohu
- B. Lampreys and Hag Fishes
- C. Lampreys and Eels
- D. Guppies and Hag Fishes

Answer: B



[Watch Video Solution](#)

85. First vertebrates are

A. Ostracoderms

B. Cephalochordates

C. Placoderms

D. Cyclostomates

Answer: A



Watch Video Solution

86. Vertebrates constitute approximately.....% of the total animals.

A. 5 %

B. 10 %

C. 15 %

D. 20 %

Answer: A



Watch Video Solution

87. Jawless vertebrates belong to the group

A. Agnatha

B. Gnathostomata

C. Lagomorpha

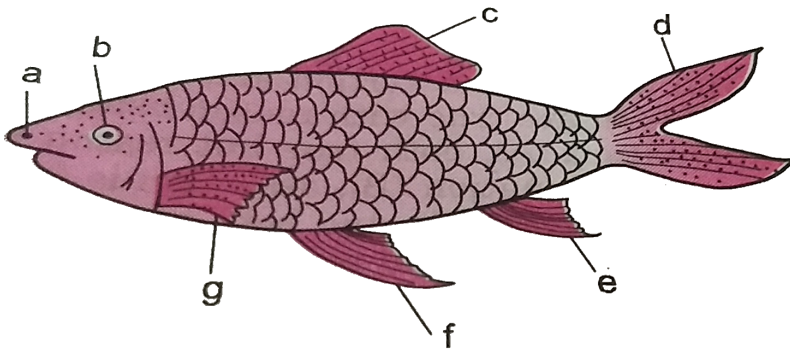
D. Prototheria

Answer: A



Watch Video Solution

88. Identify the parts a,b,c,d,e,g and g in the diagram of *Labeo rohita*



A. a-nostril, b-eye, c-dorsal fin,d-anal fin, e-dorsal fin, f-
pectoral fin, g-pelvic fin

B. a-nostril, b-eye, c-anal fin, d-caudal fin, e-dorsal fin, f-
pectoral fin, g-pelvic fin

C. a-nostril, b-eye,c-dorsal fin, d-caudal fin, e-anal fin, f-
pelvic fin, g-pectoral fin

D. a-nostril, b-eye, c-dorsal fin, d-caudal fin, e-pectoral fin,
f-anall fin, g-pelvic fin

Answer: C



Watch Video Solution

89. Air bladder is present in

- A. Star fishes
- B. Chondrichthyes
- C. Actinopterygii
- D. Flying fishes

Answer: C



[Watch Video Solution](#)

90. Fish glue is obtained from

- A. Air bladder and skin
- B. Bones
- C. Bones and skin
- D. Scales and skin

Answer: C



[Watch Video Solution](#)

91. Which one of the following is an exotic carp species ?

A. *Cirrhinus mrigala*

B. *Cyprinus carpio*

C. *Labeo bata*

D. *Barbus stigma*

Answer: B



Watch Video Solution

92. Scientific name of 'rohu' is

A. *Catla catla*

B. *Anabas testudineus*

C. *Naja naja*

D. *Labeo rohita*

Answer: D



Watch Video Solution

93. Chondrichthyes is characterized by

- A. Ventral mouth
- B. Placoid scales
- C. Ventral mouth and ctenoid scales
- D. Both A and B

Answer: D



Watch Video Solution

94. Saw Fish is

A. Betta

B. Pristis

C. Exocoetus

D. Trygon

Answer: B



Watch Video Solution

95. Match column I with column II and select the correct option from the given codes.

<i>Column I</i>	<i>Column II</i>
A. Cyclostomers	(i) Hemichordata
B. Aves	(ii) Urochordata
C. Tunicates	(iii) Agnatha
D. Balanoglossus	(iv) Pisces
E. Osteichthyes	(v) Tetrapod

A. (1) $a - p, b - q, c - r, d - s, e - t$

B. (2) $a - q, b - r, c - s, d - p, e - t$

C. (3) $a - r, b - p, c - t, d - q, e - s$

D. (4) $a - r, b - t, c - q, d - p, e - s$

Answer: D



Watch Video Solution

96. Which is correct matched without a single exception

- A. Chondrichthyes- Possess cartilaginous skeleton
- B. Mammalia-Give birth to young ones
- C. Reptilia- Possess 3-chambered heart with incompletely divided ventricle
- D. Chordata-Possess a mouth provided with an upper and a lower jaw.

Answer: A



Watch Video Solution

97. Venous heart is found in

- A. Amphibians
- B. Reptiles

C. Birds

D. Fishes

Answer: D



Watch Video Solution

98. Which one of the following categories of animals, is correctly described with no single exception in it ?

A. All reptiles posses scales, have a three chambered heart and are cold blooded

B. All bony fishes have four pairs of gills and an perculum on each side

C. All sponges are marine and have collared cells

D. All mammals are viviparous and possess diaphragm for breathing.

Answer: B



Watch Video Solution

99. Jaw of shark contains

- A. Thecodont teeth
- B. Pleurodont teeth
- C. Acrodont teeth
- D. None of the above

Answer: C



[Watch Video Solution](#)

100. In chondrichthyes, claspers are seen on

- A. Pelvic fins of male
- B. Pelvic fins of femals
- C. Operculum of both sexes
- D. Around jaws.

Answer: A



[Watch Video Solution](#)

101. Most poisonous fish is

A. Clown Fish

B. Eel Fish

C. Sword Fish

D. Puffer Fish

Answer: D



Watch Video Solution

102. Match the columns and find the correct option

<i>I</i>	<i>II</i>	<i>III</i>
(1) Ctenophora	(a) Ancylostoma	(i) Bioluminescence
(2) Plathyhelminthes	(b) Pleurobrachia	(ii) Acoelomate
(3) Cyclostomata	(c) Planaria	(iii) Migration
(4) Aschelminthes	(d) Ophiura	(iv) Coelomata
(5) Echinodermata	(e) Hog fishes	(v) Endoparasite

A.

$1 - a - i, 2 - c - ii, 3 - b - iii, 4 - e - v, 5 - d - iv$

B.

$1 - d - i, 2 - e - ii, 3 - c - iii, 4 - a - v, 5 - d - iv$

C.

$1 - b - i, 2 - c - ii, 3 - e - iii, 4 - a - v, 5 - d - iv$

D.

$1 - c - i, 2 - a - ii, 3 - d - iii, 4 - e - v, 5 - d - iv$

Answer: C



Watch Video Solution

103. Find out the wrongly matched pair

- A. Cnidoblast-Anchorage
- B. Parapodia-Defense
- C. Parapodia-Swimming
- D. Radula-Rasping organ

Answer: B



Watch Video Solution

104. Choose the wrong statement

- A. Teeth of chondrichthyes are modified ctenoid scales
- B. Air bladder in fishes regulates buoyancy
- C. In amphibians, the tympanum represents the ear
- D. Long bones in birds are pneumatic

Answer: A



Watch Video Solution

105. A marine cartilaginous fish that can produce electric current is

- A. Torpedo
- B. Trygon
- C. Scoliodon
- D. Pristis

Answer: A



Watch Video Solution

106. The ancestors of modern day frogs and salamanders are

A. Coelacanth

B. Amphioxus

C. Jawless fish

D. Hemichordata

Answer: A



Watch Video Solution

107. Which one of the following categories of animals, is correctly described with no single exception in it ?

- A. All reptiles possess scales, have three chambered heart and are cold blooded
- B. All bony fishes have four pairs of gills and an operculum on each side
- C. all sponges are marine and have collared cells
- D. All mammals are viviparous and possess muscular diaphragm for breathing.

Answer: B



Watch Video Solution

108. A jawless fish, which lays eggs in fresh water and whose ammocoetes larvae after metamorphosis return to

the ocean is

- A. Entatretus
- B. Myxine
- C. Neomyxine
- D. Petromyzon

Answer: D



Watch Video Solution

109. Flying fish is

- A. Scoliodon
- B. Exocoetus

C. Pristis

D. Trygon

Answer: B



Watch Video Solution

110. Which of the following is not a fresh water fish?

A. Pomfret

B. Kalbasu

C. Rohu

D. Catla

Answer: A



[Watch Video Solution](#)

111. The character not related to chondrichthyes is

- A. Claspers
- B. Placoid scales
- C. Filamentous gills
- D. Heterocercal caudal fin

Answer: C



[Watch Video Solution](#)

112. Statement (S). Marine lampreys migrate to rivers for spawning

Reason (R). Marine lampreys return to sea water after spawning

- A. Both S and R are correct but R is not correct explanation to S
- B. Both S and R are correct and R is correct explanation to S
- C. S is wrong but R is correct
- D. S is correct but R is wrong

Answer: D



Watch Video Solution

113. Match and find the correct combination

- (a) Ostracodermi (i) Lobe-finned fishes
(b) Coelacanth (ii) Exocoetus
(c) Cyclostomes (iii) Extinct jawless fishes
(d) Osteichthyes (iv) Hagfish

A. (a) – (iii), (b) – (i), (c) – (iv), (d) – (ii)

B. (a) – (ii), (b) – (iii), (c) – (i), (d) – (iv)

C. (a) – (i), (b) – (iii), (c) – (ii), (d) – (iv)

D. (a) – (iii), (b) – (ii), (c) – (iv), (d) – (i)

Answer: A



Watch Video Solution

114. Fishes belonging to dipnoi are commonly called

- A. Lung fishes
- B. Mud puppies
- C. Flying fishes
- D. Globe fishes

Answer: A



Watch Video Solution

115. Petromyzon is

- A. Anadromous
- B. Catadromous
- C. Nondromous
- D. Potamodormous

Answer: A



Watch Video Solution

116. Which one of the following categories of animals, is correctly described with no single exception in it ?

- A. All reptiles possess scales, have a three-chambered heart and are cold blooded
- B. All bony fishes have four pairs of gills and an operculum on each side
- C. All sponges are marine and have collared cells
- D. All mammals are viviparous and possess diaphragm for breathing.

Answer: B



Watch Video Solution

117. Statement(S). Fishes belonging to chondrichthyes have heterocercal caudal fin

Reason(R). These fishes have an air bladder that acts as hydrostatic organ

A. S is correct but R is wrong

B. S is wrong but R is correct

C. Both S and R are correct and R is correct explanation to S

D. Both S and R are correct and R is not correct explanation to S

Answer: A



Watch Video Solution

118. Ammocoete larva is of

- A. Paired fins
- B. Placoid scales
- C. Catadromous migration
- D. Anadromous migration.

Answer: D



Watch Video Solution

119. Match the find the correct answer.

I

(a) Stomochord

(b) Botryoidal tissue

(c) Captacula

(d) Rhabdites

II

(i) Hirudinaria

(ii) Dentalium

(iii) Balanoglossus

(iv) Dugesia

(v) Pinctada

A. $a - iii, b - ii, c - v, d - i$

B. $a - i, b - ii, c - iv, d - iii$

C. $a - iii, b - i, c - ii, d - iv$

D. $a - i, b - iii, c - ii, d - v$

Answer: C



Watch Video Solution

120. Ampullae of Lorenzini are present in

- A. Thermoreceptor
- B. Chemoreceptor
- C. Electoreceptor
- D. Touch receptor

Answer: A



Watch Video Solution

121. In vertebrates, the notochord is modified into

- A. Tail
- B. Vertebral column

C. Heart

D. Pharynx

Answer: B



Watch Video Solution

122. This is not true of sharks

A. They are as long as 12 m

B. They are viviparous

C. They have swim bladder

D. Their liver is rich source of vitamin A.

Answer: C



[Watch Video Solution](#)

123. Which is not a fish?

- A. Dog fish
- B. Saw fish
- C. Star Fish
- D. Flying Fish

Answer: C



[Watch Video Solution](#)

124. Which of the following characteristic features always holds true for the corresponding group of animals

(1) 3 - chambered heart with one incompletely divided ventricle	Reptilia
---	----------

(2) Cartilaginous endoskeleton	Chondrichthyes
--------------------------------	----------------

(3) Viviparous	Mammalia
----------------	----------

(4) Possess a mouth with an upper and a lower jaw	Chordata
---	----------

A. 3-chambered heart with one incompletely divided ventricleReptilia

B. Cartilaginous endoskeleton.....Chondrichthyes

C. Viviparous.....Mammalia

D. Possess a mouth with an upper and lower jaw.....Chordata.

Answer: B



Watch Video Solution

125. Choose the correct statement

- A. All pisces have gills covered by an operculum
- B. All mammals are viviparous
- C. All cyclostomata do not possess jaw and paired fins
- D. All reptiles have a three chambered heart.

Answer: C



Watch Video Solution

126. Select the correct statement regarding reproduction.

- A. Mating in dogs is synchronised with lunar cycle
- B. Salamanders always have internal fertilization
- C. In Trygon, the male introduces sperms into female through a modified pelvic fin
- D. Catla has internal fertilization

Answer: C



Watch Video Solution

Check Your Grasp

1. Air bladder is present in

A. Petromyzon

B. Scoliodon

C. Labeo

D. Frog

Answer:



Watch Video Solution

2. Large pectoral fins inserted dorsally and powerful tail occur in

A. Remora

B. Anabas

C. Trygon

D. Exocoetus

Answer:



Watch Video Solution

3. Bony fish swimming vertically and having bony shields with predhensile tail is

A. Hippocampus

B. Latimeria

C. Anguilla

D. Solea

Answer:



Watch Video Solution

4. Golden Age of Fishes is

A. Carboniferous

B. Devonian

C. Mesozoic

D. Coenozoic

Answer:



Watch Video Solution

5. Which is not a fish?

- A. Sea Horse
- B. Climbing Perch
- C. Silver Fish
- D. Eel

Answer:



Watch Video Solution

6. Large movable spines occur in fish

- A. Diodon
- B. Exocoetus

C. Anabas

D. Echeneis

Answer:



Watch Video Solution

7. A fish which migrate to ocean for spawning is

A. Latimeria

B. Anguilla

C. Gambusia

D. Clarius

Answer:



[Watch Video Solution](#)

8. A shark which often ascends Hoogly is

A. Scoliodon

B. Rhinodon

C. Carcharhinus

D. Latimeria

Answer:



[Watch Video Solution](#)

9. Pristis is

A. Rat Fish

B. Cat Fish

C. Carp

D. Saw Fish

Answer:



Watch Video Solution

10. Lamprey Petromyzon is

A. Carnivorous

B. Sanguivorous

C. Ectoparasite

D. Both B and C

Answer:



Watch Video Solution

11. A group of aquatic animals is

- A. Prawn, Mosquito and Shark
- B. Corals, Paramecium and Earthworm
- C. Sponge, Starfish and Silver Fish
- D. Hydra, Octopus and Sea Horse

Answer:



Watch Video Solution

12. Placoid scales occur in

- A. Toad
- B. Cartilaginous fishes
- C. Bony fishes
- D. Lizard

Answer:



Watch Video Solution