



BIOLOGY

BOOKS - DINESH PUBLICATION

ENGLISH

VIRUSES VIROIDS AND PRIONS

Mcq

1. Which of the following parasites is nonliving outside the cell of a living organism and

becomes living on entering it ?

A. Bacterium

B. Bacteriophage

C. Plasmodium

D. Yeast.

Answer: B



Watch Video Solution

2. RNA is genetic material in

A. T_2 virus

B. T_4 virus

C. SV - 400

D. TMV .

Answer: D



Watch Video Solution

3. Double stranded RNA is found in

A. Influenza Virus

B. Reovirus

C. Polio Virus

D. T_4 Virus

Answer: B



Watch Video Solution

4. Smallest virus is

A. Foot and Mouth virus

B. Alfalfa Mosaic virus

C. Pseudomonas Pf

D. TMV.

Answer: A



Watch Video Solution

5. Who discovered virus to be nucleoprotein entity ?

A. Causius

B. Pasteur

C. Ivanowski

D. Bawden and Piria.

Answer: D



Watch Video Solution

6. Name the most common viral disease

A. Flu

B. Common Cold

C. Rabies

D. Chicken Pox.

Answer: B



Watch Video Solution

7. The term virus was coined by

A. Ivanowski

B. Beijerinck

C. Pasteur

D. Loeffler and Frosch.

Answer: C



Watch Video Solution

8. A viral disease known from prehistoric times is

- A. Pneumonia
- B. Small Pox
- C. Poliomyelitis
- D. Both B and C.

Answer: D



Watch Video Solution

9. Rabies or hydrophobia is a disease

A. Viral

B. Bacterial

C. Protozoan

D. Helminthic.

Answer: A



Watch Video Solution

10. Who discovered vaccination against small pox?

A. Jenner

B. Pasteur

C. Lister

D. Mayer.

Answer: A



11. Extract of Tobacco with Mosaic disease was called contagium vivum fluidum by

- A. Mayer
- B. Ivanowski
- C. Beijerinck
- D. Pasteur.

Answer: C



12. Who found poliomyelitis to be viral disease ?

A. Pasteur

B. Popper

C. De Herelle

D. Loeffler and Frosch.

Answer: B



Watch Video Solution

13. Bacteriophages were discovered by

A. Twort

B. De Herelle

C. Takahashi and Rawlins

D. Stanley.

Answer: A



Watch Video Solution

14. Term bacteriophage was coined by

A. Pasteur

B. Ivanowski

C. Saffarman and Morris

D. De Herelle.

Answer: D



Watch Video Solution

15. Name the virus which was crystallised for the first time

A. Parrot Fever Virus

B. Small Pox Virus

C. TMV

D. HIV.

Answer: C



Watch Video Solution

16. Who cultured the virus for the first time ?

A. Stanley

B. Enders

C. Takahashi and Rawlins

D. Issacs and Lindemann.

Answer: B



Watch Video Solution

17. The first virus to be cultured in human cells was

- A. Polio Virus
- B. Dengue Virus
- C. Influenza Virus
- D. HIV.

Answer: A



Watch Video Solution

18. Coliphages are viruses parasitising

A. Fungi

B. Alimentary canal

C. Escherichia coli

D. Yeast.

Answer: C



Watch Video Solution

19. Who discovered that RNA is genetic material in TMV ?

A. Gierere and Schramm

B. Issacs and Lindemann

C. Sinsheimer

D. Delbruck.

Answer: A



Watch Video Solution

20. The most mutable virus is

A. Chicken Pox Virus

B. HIV

C. Influenza Virus

D. Dengue Virus

Answer: B



Watch Video Solution

21. Retroviruses and reverse transcriptase were discovered by

A. Sinsheimer

B. Stanley

C. Temin and Baltimore

D. Hershey and Chase

Answer: C



Watch Video Solution

22. Single stranded DNA as genetic material in

$\phi \times 174$ was discovered by

A. Delbruck

B. Safferman and Morris

C. Reed and Finley

D. Sanger

Answer: D



Watch Video Solution

23. TMV is

A. Helical Virus

B. Spherical Virus

C. Binal Virus

D. None of these

Answer: A



Watch Video Solution

24. Bacteriophage T_2 is

A. Filamentous

B. Cuboidal

C. polyhedral

D. Spherical.

Answer: C



Watch Video Solution

25. Which is absent in virus ?

A. Genetic material

B. Protein cover

C. Protoplasm

D. Both A and B.

Answer: C



Watch Video Solution

26. A virion is a

- A. Virus in stage of multiplication
- B. Virus attached to host cell nucleus
- C. Virus inside cytoplasm of host cell
- D. Virus in cell free environment .

Answer: D



Watch Video Solution

27. Peplomers are subunits of

A. Protein cover

B. Genetic material of virus

C. Viral envelope

D. Occasional enzyme found in viruses.

Answer: C



Watch Video Solution

28. Viral envelope is made of

A. Proteins

B. Lipid

C. Carbohydrates

D. All the above

Answer: D



Watch Video Solution

29. Host component of viral envelope is mostly

A. Lipids

B. Carbohydrates

C. Lipids and proteins

D. Lipids and carbohydrates.

Answer: C



Watch Video Solution

30. Capsid is

- A. Genetic material of virus
- B. Protein cover of virus
- C. Extra genetic material of bacterium
- D. House keeping genome of bacterium.

Answer: B



Watch Video Solution

31. A virus with as DNA is

A. $\phi \times 174$

B. Coliphage fd

C. Coliphage MS2

D. All the above

Answer: C



Watch Video Solution

32. Genomic nucleic acid is fragmented in

(a) TMV

(b) Influenza virus

(c) HIV

(d) Poliomyelitis virus.

A. TMV

B. Influenza virus

C. HIV

D. Poliomyelitis virus.

Answer: B



[Watch Video Solution](#)

33. Virus having enzyme lysozyme is

- A. Retrovirus
- B. Influenza virus
- C. Bacteriophage
- D. Vaccinia virus.

Answer: C



[Watch Video Solution](#)

34. Reverse transcriptase occurs in virus

A. HIV

B. Influenza virus

C. Vaccinia virus

D. All the above

Answer: A



Watch Video Solution

35. Which of the following is a DNA containing plant virus

A. TMV

B. Cauliflower Mosaic Virus

C. Potato Mosaic Virus

D. Both B and C.

Answer: B



Watch Video Solution

1. Viruses are

- A. Obligate parasites
- B. Obligate saprophytes
- C. Partial parasites
- D. Facultative parasites.

Answer: A



Watch Video Solution

2. Viruses possess

A. DNA only

B. Nucleic acid, DNA or RNA

C. Protein only

D. Nucleic acid and protein

Answer: D



Watch Video Solution

3. Coliphage $\phi \times 174$ virus contains

- A. Singla stranded RNA
- B. Double stranded RNA
- C. Single stranded DNA
- D. Doule stranded DNA

Answer: C



Watch Video Solution

4. Single stranded DNA occurs as a genetic material in virus

A. T_2

B. T_4

C. $\phi \times 174$

D. Lambda.

Answer: C



Watch Video Solution

5. In viruses, the nucleic acid is

A. DNA

B. RNA

C. Both A or B

D. Either A or B .

Answer: D



Watch Video Solution

6. Bacteriophages kill

A. Fungi

B. All monerans

C. Bacteria

D. Viruses.

Answer: C



Watch Video Solution

7. Viroids differ from viruses in having

A. Satellite RNA packaged with viral genome

B. Naked DNA molecules

C. Naked RNA molecules only

D. Naked DNA packaged with viral genome

Answer: C



Watch Video Solution

8. Reverse transcriptase is also called

- A. RNA dependent RNA polymerase
- B. DNA dependent RNA polymerase
- C. DNA dependent DNA polymerase
- D. RNA dependent DNA polymerase.

Answer: D



Watch Video Solution

9. Tobacco Mosaic Virus (TMV) genes are

- A. Double stranded RNA

B. Single stranded RNA

C. Polyribonucleotide

D. Proteinaceous.

Answer: C



Watch Video Solution

10. Which of the following cannot be grown on artificial culture medium?

A. *Escherichia coli*

B. TMV

C. Aspergillus

D. Yeast.

Answer: B



Watch Video Solution

11. The first to isolate plant virus was

Or

The Tobacco mosaic virus was crystallized for first time by

A. Edward Jenner

B. Louis Pasteur

C. Andre Lwoff

D. W.M. Stanley

Answer: D



Watch Video Solution

12. Bacteriophage is

A. Mycoplasma

B. Virus

C. Rickettsia

D. Spirochaete

Answer: B



Watch Video Solution

13. A bacteriophage is

A. Virus attacking bacteria

B. Virus attacking virus

C. Bacterium attacking virus

D. stage in bacterial life cycle.

Answer: A



Watch Video Solution

14. In some viruses, RNA is present instead of DNA indicating that

A. Their nucleic acid must combine with host DNA before replication

B. They cannot replicate

C. There is no hereditary information

D. RNA can act to transfer heredity.

Answer: D



Watch Video Solution

15. Virus attacking blue-green algae is known as

A. Cyanophage

B. Coliphage

C. Bacteriophage

D. Zoophage.

Answer: A



Watch Video Solution

16. Virus consists of

A. Protein

B. Nucleic acid

C. Protein and RNA

D. Protein and nucleic acid

Answer: D



Watch Video Solution

17. Tailed bacteriophages are

A. Non-motile

B. Actively motile in water

C. Motile on bacterial surface

D. Motile on surface of plant leaves.

Answer: A



Watch Video Solution

18. RNA is genetic material in

A. Bacterium

B. Bacteriophage

C. TMV

D. Protozoan.

Answer: C



Watch Video Solution

19. Genetic material of influenza virus is

- A. Single helix DNA
- B. Double helix DNA
- C. Double strand RNA
- D. Single strand RNA

Answer: D



[Watch Video Solution](#)

20. most of the bacteriophages possess

- A. Rounded shape
- B. Tadpole shape
- C. Irregular shape
- D. Rhomboid shape.

Answer: B



[Watch Video Solution](#)

21. A bacteriophage possesses an enzyme

A. reverse transcriptase

B. Urease

C. Dehydrogenase

D. Lysozyme.

Answer: D



Watch Video Solution

22. Genetic material of virus is

A. DNA

B. RNA

C. DNA or RNA but both

D. None of the above.

Answer: C



Watch Video Solution

23. The protein coat of virus is called

A. Capsid

B. Virion

C. Viroid

D. Bacterial wall

Answer: A



Watch Video Solution

24. Genetic material of bacteriophage is

A. RNA

B. DNA

C. RNA and DNA

D. DNA and mRNA

Answer: B



Watch Video Solution

25. Virus was discovered by

A. Stanley

B. Ivanowski

C. Herelle

D. Beijerinck.

Answer: B



Watch Video Solution

26. Animal viruses mostly contain

A. RNA

B. RNA and DNA

C. DNA

D. None of the above.

Answer: C



Watch Video Solution

27. Which one is absent in viruses

A. Replication

B. Mutation

C. Protein synthesis

D. Energy liberation.

Answer: D



Watch Video Solution

28. Coliphage T_2 has

A. ds DNA

B. ss RNA

C. ds RNA

D. ss DNA

Answer: A



Watch Video Solution

29. A characteristic of viruses is

A. Without independent metabolism

B. With independent metabolism

C. Multiplication outside living cells.

D. Culture in cell free medium.

Answer: A



Watch Video Solution

30. Which one does not have cellular structure ?

A. Bacteriophage

B. PPLO

C. Bacterium attacking virus

D. Diatom

Answer: A



Watch Video Solution

31. Viruses parasitising bacteria are

A. Bacteriophages

B. Bacto-viruses

C. Retroviruses

D. Plasmids.

Answer: A



Watch Video Solution

32. An arthropod belonging to onychophora which possesses nephridia is

A. Limulus

B. Peripatus

C. Daphnia

D. Lepisma

Answer: C



Watch Video Solution

33. Phages that show lysogenic cycle are called

- A. Lytic phages
- B. Temperate phages
- C. Virulent phages
- D. Avirulent phages.

Answer: B



Watch Video Solution

34. Genetic material of retroviruses is

A. ss RNA

B. ss DNA

C. ds RNA

D. ds DNA

Answer: A



Watch Video Solution

35. In some viruses, RNA is present instead of DNA indicating that

A. Ribocubica

B. Ribobinala

C. Ribovira

D. Deoxyvira

Answer: C



Watch Video Solution

36. Helical contractile sheath occurs in

A. Bacteria

B. Bacteriophage

C. Riboviruses

D. Fungi

Answer: B



Watch Video Solution

37. Sometimes when a virus attacks a bacterium, neither the virus multiplies nor the bacterium dies. This phenomenon is called as

A. Lysogeny

B. Adsorption

C. Assimilation

D. Viral stability

Answer: A



Watch Video Solution

38. The stage following infection by virus when virus particles cannot be observed is

A. Infection phase

B. Eclipse phase

C. Maturation phase

D. Lysogenic phase.

Answer: B



Watch Video Solution

39. Circular single stranded DNA occurs in bacteriophage

A. T_2, T_4

B. $\phi \times 174, M13$

C. $T_3, \phi 6$

D. δ, T_5

Answer: B



Watch Video Solution

40. Which of the following is an example of viral disease ?

- A. Leaf curl of Papaya
- B. Late blight of Potato
- C. Black rust of Wheat
- D. Red rot of Sugarcane

Answer: A



Watch Video Solution

41. In coliphage viruses the nucleic acid is

- A. RNA only

B. DNA only

C. DNA or RNA

D. DNA and RNA

Answer: B



Watch Video Solution

42. Largest known virus is

A. TMV

B. T_1 phage

C. Citrus tristeza

D. $\phi \times 174$

Answer: C



Watch Video Solution

43. TMV has a size of

A. $50nm \times 10nm$

B. $100nm \times 20nm$

C. $300nm \times 18nm$

D. $500nm \times 24nm$

Answer: C



Watch Video Solution

44. Which of the following viruses has DNA ?

A. Tobacco Mosaic Virus

B. Cauliflower Mosaic Virus

C. Tomato Mosaic Virus

D. Potato Mosaic Virus

Answer: B



Watch Video Solution

45. Mature virus pariticle is

A. Virion

B. Viricide

C. Capsid

D. Peplomer

Answer: A



[Watch Video Solution](#)

46. RNA retroviruses have an enzyme that

- A. Translates host DNA
- B. Polymerises host DNA
- C. Transcribes viral RNA to cDNA
- D. Destroys host DNA

Answer: C



[Watch Video Solution](#)

47. Naked DNA virus is

A. Polio Virus

B. Adenovirus

C. Reovirus

D. Ribovirus.

Answer: B



Watch Video Solution

48. Genetic material in animal viruses like influenza virus, polio virus, measles virus and HIV is

A. ss DNA

B. ds DNA

C. ss RNA

D. ds RNA

Answer: C



Watch Video Solution

49. Plant viruses mostly contain

A. DNA

B. RNA

C. Both DNA and RNA

D. Coiled nucleolus.

Answer: B



Watch Video Solution

50. Potato leaf-roll disease is caused by

A. Mycoplasma

B. Virus

C. Microspores

D. Bacterium

Answer: B



Watch Video Solution

51. Reverse transcriptase

- A. Disintegrates host DNA
- B. Polymerises host DNA
- C. Translates host DNA
- D. Transcribes viral RNA to cDNA

Answer: D



Watch Video Solution

52. Viral envelope is made of

A. Carbohydrates

B. Lipid

C. Protein

D. All the above

Answer: C



Watch Video Solution

53. Enzyme needed for production of DNA from RNA template in certain viruses is

- A. RNA polymerase
- B. Reverse transcriptase
- C. DNA helicase
- D. DNA polymerase.

Answer: B



Watch Video Solution

54. Bovine spongiform encephalopathy is a bovine disease. To which of the following human diseases it is related?

A. Kala-azar

B. Parkinson's disease

C. Creutzfeldt-Jekob disease

D. None of the above.

Answer: C



Watch Video Solution

55. Temin worked on virus

A. Rhinovirus

B. Dengue Virus

C. Herpes virus

D. Retrovirus

Answer: D



Watch Video Solution

56. Viruses cannot multiply of their own because they

A. Do not have sex organs

B. Lack genetic material

C. Lack cellular machinery to use its genetic material

D. None of the above.

Answer: C



Watch Video Solution

57. Viruses are living because

A. They can reproduce

B. They have protein synthesising
machinery

C. They have some genes

D. They are parasites

Answer: A



Watch Video Solution

58. The capsid of tobacco mosaic virus (TMV) has capsomeres numbering

A. 3120

B. 2130

C. 1230

D. 231

Answer: B



Watch Video Solution

59. Caulimo (Cauliflower Mosaic) viruses have

A. Double stranded DNA

B. Single stranded DNA

C. Single stranded RNA

D. Double stranded RNA

Answer: A



Watch Video Solution

60. What is true of viruses ?

- A. They are obligate intracellular parasites
- B. They are bigger than bacteria
- C. They are non-specific for their hosts
- D. They can reproduce in non-living medium.

Answer: A



Watch Video Solution

61. A polyhedral virus is

A. TMV

B. Polio Virus

C. Adenovirus

D. Vaccinia Virus

Answer: C



Watch Video Solution

62. Which is correctly matched ?

A. Ligase-Breaking DNA strand

B. Flame cells-Roundworms

C. Rous Sarcoma-Revetse transcriptase

D. Thyroxine -Adrenal

Answer: C



Watch Video Solution

63. TMV possesses

A. DNA

B. DNA + "Protein"

C. RNA + "Protein"

D. DNA + RNA

Answer: C



Watch Video Solution

64. Genetic material of reovirus is

A. DNA

B. RNA

C. DNA and RNA

D. Nucleoprotein complexes.

Answer: B



Watch Video Solution

65. What is true about viruses ?

A. They can be crystallised and stored for several years

B. Viruses do not occur as parasites in living cells

C. They can be cultured on artificial media

D. They are devoid of genetic material of their own

Answer: A



Watch Video Solution

66. Potato leaf roll disease is caused by

A. Fungi

B. Viruses do not occur as parasites in living cells

C. Bacteria

D. Nematodes

Answer: B



Watch Video Solution

67. Genetic material of reovirus is

A. ss DNA

B. ds DNA

C. ms RNA

D. ds RNA

Answer: D



Watch Video Solution

68. The one which does not lose its identity even after crystallisation is

A. Virus

B. Bacterium

C. Microbe

D. Protistan

Answer: A



Watch Video Solution

69. Virus with nucleic acid but without protein coat is

A. Virion

B. Viroid

C. Capsid

D. Prion

Answer: B



Watch Video Solution

70. Prophage is viral genome

(a) Freshly synthesised

(b) Inoculated to a bacterium

(c) Outside the host cell

(d) Incorporated and integrated to host genome

A. Freshly synthesised

B. Inoculated to a bacterium

C. Outside the host cell

D. Incorporated and integrated to host genome

Answer: D



Watch Video Solution

71. Viruses are no more 'alive' than isolated chromosomes because

- A. They require both RNA and DNA
- B. They both need food molecules
- C. They both require oxygen for respiration
- D. Both require the environment of a cell to replicate.

Answer: D



Watch Video Solution

72. Which one of the following statements about viruses is correct?

A. Viruses possess their own metabolic system

B. All viruses contain both RNA and DNA

C. Viruses are obligate parasites

D. Nucleic acid of viruses is known as capsid

Answer: C



73. Viroids have :

A. Single stranded RNA not enclosed by protein coat

B. Single strandad DNA not enclosed by protein coat

C. Double stranded DNA enclosed by protein coat

D. Double stranded RNA enclosed by protein coat

Answer: A



Watch Video Solution

74. Assertion : Severe acute Respiratory Syndrome (SARS) originated in china

Reason : China is the most populated country of the world

- A. Point out if both are true with reason being correct explanation
- B. both true but reason not correct explanation
- C. assertion true but reason wrong
- D. and both are wrong

Answer: B



Watch Video Solution

75. Which one is caused by virus

A. Malaria

B. Polio

C. Plague

D. Tuberculosis

Answer: B



Watch Video Solution

76. Which of the following diseases is not caused by virus?

A. Mumps

B. AIDS

C. Tuberculosis

D. Rabies.

Answer: C



Watch Video Solution

77. cDNA is

- A. Circular DNA
- B. Coiled DNA
- C. Cytoplasmic DNA
- D. Complementary DNA

Answer: D



Watch Video Solution

78. Which viral disease is spread by mosquito?

(a) Plague

(b) Typhus

(c) Yellow fever

(d) Elephantiasis

A. Plague

B. Typhus

C. Yellow fever

D. Elephantiasis

Answer: C



Watch Video Solution

79. Double stranded RNA is found in

A. TMV

B. Reovirus

C. $\phi \times 174$

D. Cauliflower Mosaic Virus

Answer: B



Watch Video Solution

80. Viruses that infect bacteria, multiply and cause their lysis are called

A. Lysozymes

B. Lipolytic

C. Lysogenic

D. Lytic.

Answer: D



Watch Video Solution

81. What is not true of retrovirus

A. DNA has no role in life cycle

B. There is a gene for RNA dependent DNA
polymerase

C. Genetic material is RNA

D. They are causative agents for certain
cancers.

Answer: A



Watch Video Solution

82. The genetic material of HIV is

A. ss DNA

B. ss RNA

C. ds RNA

D. ds DNA

Answer: B



Watch Video Solution

83. Cryptogram of TMV is

(a) R/1, 1/8, S/S, S/Af

(b) R/2, 1/5, E/P, O/S

(c) R/1, 2/5, E/E, S/O

(d) R/1, 2/7, E/E, S/O

A. R/1, 1/8, S/S, S/Af

B. R/2, 1/5, E/P, O/S

C. R/1, 2/5, E/E, S/O

D. R/1, 2/7, E/E, S/O

Answer: A



Watch Video Solution

84. Which of the following is false?

- A. Most plant viruses are RNA viruses
- B. Most animal viruses are DNA viruses
- C. TMV has a doubled stranded RNA
- D. T_4 bacteriophage has doule stranded DNA molecule.

Answer: C



Watch Video Solution

85. Viral genome incorporated and integrates with bacterial genomes is refer to as

A. DNA

B. Prophage

C. RNA

D. Both B and C.

Answer: B



Watch Video Solution

86. Identify the correct pair having double stranded RNA

A. Cauliflower mosaic virus and Dahlia mosaic virus

B. Poliovirus and Wound tumour virus

C. Tobacco mosaic virus and Reovirus

D. Wound tumour virus and Reovirus.

Answer: D





87. Louis Pasteur's view on the origin of life is that

- A. They have arisen from nucleic acid and protein found in primitive soup
- B. They arose from bacteria as a result of loss of cell wall ribosomes, ect.
- C. They arose from some bacteria which developed a nucleus only

D. They are modified plasmide which are in fact the fragments of nucleic acids of the host.

Answer: D



Watch Video Solution

88. Viral envelope is made of

A. Lipids

B. Proteins

C. Carbohydrates

D. All the above

Answer: D



Watch Video Solution

89. Retrovirus employs To make complementary DNA from RNA

A. DNA polymerase

B. Restriction endonuclease

C. Reverse transcriptase

D. Reverse polymerase.

Answer: C



Watch Video Solution

90. Reverse transcription was first shown by

A. Garrod

B. Temin and Baltimore

C. Beadla and Tatum

D. Marshall and Nirenberg

Answer: B



Watch Video Solution

91. A provirus is

A. Free virus

B. Free DNA

C. Primitive virus

D. Integrated virus genome

Answer: D



Watch Video Solution

92. Bacteriophage releases lysozyme at

- A. Absorption phase
- B. Penetration phase
- C. Eclipse phase
- D. Maturation phase

Answer: B



Watch Video Solution

93. Host of TMV is

(a) Nicotiana

(b) Triticum

(c) Dhatura

(d) Withania

A. Nicotiana

B. Triticum

C. Datura

D. Withania

Answer: A



Watch Video Solution

94. Prion consists of

(a) DNA

(b) RNA

(c) Both DNA and RNA

(d) Protein

A. DNA

B. RNA

C. Both DNA and RNA

D. Protein

Answer: D



Watch Video Solution

95. Viroid causes

(a) Cauliflower mosaic

(b) Potato spindle mosaic

(c) Tobacco mosaic

(d) Tulip yellow mosaic.

A. Cauliflower mosaic

B. Potato spindle mosaic

C. Tobacco mosaic

D. Tulip yellow mosaic.

Answer: B



Watch Video Solution

96. Franklin Conrat demonstrated that RNA is genetic material in

A. HIV

B. CMV

C. TMV

D. Mouse Sarcoma.

Answer: C



Watch Video Solution

97. Proteinaceous infectious particles causing disease are

A. Prions

B. Viroids

C. Viruses

D. Chlamydia.

Answer: A



Watch Video Solution

98. RNA like particles that cause disease are

A. Virus

B. Viroid

C. Prion

D. Mycoplasma.

Answer: B



Watch Video Solution

99. RNA retroviruses have a special enzyme that

- (a) Polymerizes host DNA
- (b) Translates host DNA
- (c) Disintegrates host DNA
- (d) Transcribes viral RNA to DNA

A. Polymerises host DNA

B. Translates host DNA

C. Disintegrates host DNA

D. Transcribes viral RNA to DNA

Answer: D



Watch Video Solution

100. Virus multiplies in

A. Dead tessue

B. Soil

C. Living tissue

D. Culture medium.

Answer: C



Watch Video Solution

101. Which one does not occur in lytic life cycle of a virulent DNA phage?

- A. The host cell lyses
- B. New phages are released
- C. Host cell produces a number of virions
- D. Phage DNA integrates with host DNA

Answer: D



102. A virus containing ssRNA act as a template for DNA synthesis is called as

- A. Polio Virus
- B. Retrovirus
- C. Adeno Virus
- D. Pox virus

Answer: B



103. Find the correct matches

	List I		List II
<i>a</i>	<i>M</i> ₁₃ bacteriophage	<i>i.</i>	ds RNA
<i>b</i>	Rice Dwarf Virus	<i>ii.</i>	ss RNA
<i>c</i>	Cauliflower Mosaic Virus	<i>iii.</i>	ss DNA
<i>d</i>	Polio Virus	<i>iv.</i>	ds DNA

(1) a-iii, b-i, c-iv, d-ii

(2) a-ii, b-i, c-iii, d-iv

(3) a-iii, b-iv, c-ii, d-i

(4) a-iv, b-iii, c-i, d-ii

A. a-iii, b-i, c-iv, d-ii

B. a-ii, b-i, c-iii, d-iv

C. a-iii, b-iv, c-ii, d-i

D. a-iv, b-iii, c-I, d-ii

Answer: A



Watch Video Solution

104. Which institute is correctly matched with its location?

A. National institute of communicable diseases-Lucknow

B. National Institute of Virology-Pune

C. National Institute of Nutrition-Mumbai

D. Central Drug Research Institute-Kasauli.

Answer: B



Watch Video Solution

105. SARS

A. Affects non-vegetarians faster than vegetarians

B. Is an acute form of asthma

C. Is caused by a variant of Common Cold virus (Corona virus)

D. Is caused by a variant of Pneumococcus pneumoniae.

Answer: B



Watch Video Solution

106. Rabies is caused by a

A. Bacterium

B. Worm

C. Virus

D. Fungus.

Answer: C



Watch Video Solution

107. Which one has ssRNA ?

A. $\phi \times 174$

B. T_2 bacteriophage

C. Pox virus

D. TMV.

Answer: D



Watch Video Solution

108. Genetic material of Rabies virus is

A. Double stranded RNA

B. Single stranded RNA

C. Double stranded DNA

D. Single stranded DNA

Answer: B



Watch Video Solution

109. Virion is

A. Virus without protein coat

B. Enuclented virus

C. Prion

D. Virus.

Answer: D



Watch Video Solution

110. What is false ?

A. TMV has double stranded RNA molecule

B. Most plant viruses are RNA viruses

C. Bacteriophage has a double stranded

DNA molecule

D. Most animal viruses are DNA viruses.

Answer: A



Watch Video Solution

111. Which one of the following are intracellular obligate parasites

(a) Bacteria

(b) Slime molds

(c) Viruses

(d) Blue-green algae

A. Bacteria

B. Slime moulds

C. Viruses

D. Blue-green algae.

Answer: C



Watch Video Solution

112. Potato Spindle Tuber disease is caused by

a

A. Nematode

B. Virus

C. Bacterium

D. Viroid.

Answer: D



Watch Video Solution

113. HIV is classified as a retrovirus because its genetic information is carried in

A. DNA instead of RNA

B. DNA

C. RNA instead of DNA

D. Protein coat.

Answer: C



Watch Video Solution

114. Spongiform encephalopathy is caused by

A. Prion

B. E. coli

C. Virus

D. Fungus.

Answer: A



Watch Video Solution

115. The agents which are known to cause CJD are

A. Protein particles

B. A class of bacteria

C. A class of viruses

D. Fungi

Answer: A



Watch Video Solution

116. T.O. Diener discovered as

A. Bacteriophage

B. Infectious protein

C. Free infectious DNA

D. Free infectious RNA

Answer: D



Watch Video Solution

117. AIDS contains or Human immuno deficiency (HIV) virus has protein coat and genetic material which is

A. RNA with protein

B. DNA only

C. DNA with protein

D. DNA without protein

Answer: A



Watch Video Solution

118. Bovine spongiform encephalopathy is a disease caused by prions in a

A. Cow

B. Sheep

C. Potato

D. Man.

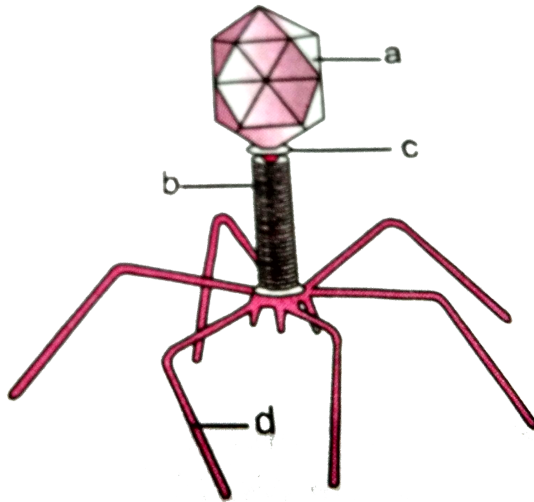
Answer: A



Watch Video Solution

119. Given is a diagram of a bacteriophage in which one of the options all the four parts, a,

b, c, and d are correct.



A. (1)

<i>a</i>	<i>b</i>	<i>c</i>	<i>d</i>
Tail fibres	Head	Sheath	Collar

B. (2)

<i>a</i>	<i>b</i>	<i>c</i>	<i>d</i>
Sheath	Collar	Head	Tail fibres

C. (3)

<i>a</i>	<i>b</i>	<i>c</i>	<i>d</i>
Head	Sheath	Collar	Tail fibres

D. (4)

<i>a</i>	<i>b</i>	<i>c</i>	<i>d</i>
Collar	Tail fibres	Head	Sheath

Answer: C



Watch Video Solution

120. Which of the following is considered as neither prokaryotes nor eukaryotes?

(a) Bacteria

(b) Monera

(c) Fungi

(d) Bacteriophages

A. Bacteria

B. Monera

C. Fungi

D. Bacteriophages.

Answer: D



Watch Video Solution

121. Virus differs from bacterium in having

A. Cell wall

B. Cytosol

C. DNA as genetic material

D. DNA or RNA with no ribosomes.

Answer: D



Watch Video Solution

122. Nucleic acid does not occur in

A. Prion

B. Viroid

C. Virus

D. Mycoplasma.

Answer: A



Watch Video Solution

123. Common cold is not caused by antibiotics because it is

A. Caused by virus

B. Caused by Gram (+) bacterium

C. Caused by Gram (-) bacterium

D. Not an infectious disease.

Answer: A



Watch Video Solution

124. Which statement is wrong for viruses?

A. All are parasites

B. All of them have helical symmetry

C. They have the ability to synthesise
nucleic acid and proteins

D. Antibiotics have no effect on them.

Answer: B



Watch Video Solution

125. Identify the correct sequence of events in
the viral replication process

- I. Eclipse II. Maturation
III. Adsorption IV. Assembly
V. Penetration VI. Lysis

A. $I \rightarrow II \rightarrow III \rightarrow IV \rightarrow V \rightarrow VI$

B. $II \rightarrow I \rightarrow III \rightarrow IV \rightarrow V \rightarrow VI$

C. $III \rightarrow V \rightarrow I \rightarrow II \rightarrow IV \rightarrow VI$

D. $III \rightarrow V \rightarrow I \rightarrow IV \rightarrow II \rightarrow VI$

Answer: C



Watch Video Solution

126. The genetic material of Papaya Mosaic Virus is

A. ss DNA

B. ds DNA

C. ds RNA

D. ss RNA

Answer: D



Watch Video Solution

127. The genetic material of a viroid is

A. DNA

B. RNA

C. Protein

D. Carbohydrate

Answer: B



Watch Video Solution

128. Which requires lysozyme for life cycle of viruses

- A. Eclipse phase
- B. Penetration phase
- C. Adsorption phase
- D. Latent phase

Answer: B



Watch Video Solution

129. Total number of amino acids in capsid of TMV having 2130 capsomeres is

(a) 336540

(b) 162622

(c) 948

(d) 387921

A. 336540

B. 162622

C. 948

D. 387921

Answer: A



Watch Video Solution

130. Satellite RNA are present in some

- A. Prions
- B. Bacteriophages
- C. Plant viruses
- D. Viroids

Answer: C



Watch Video Solution

131. A virus can be considered living being as it

(a) Reproduces inside the host

(b) Respires

(c) Can cause disease

(d) Responds to touch stimule.

A. Reproduces inside the host

B. Respires

C. Can cause disease

D. Responds to touch stimule.

Answer: A



Watch Video Solution

132. Identify the correct pair of combination

I. Viroid -Bovine spongiform encephalitis , II.

Prion-Creutzfeldf-Jakob disease

III. Measles Virus -Glycoprotein projecions

IV. Rabies Virus-Polyhedral symmetry

A. III, IV

B. I, III

C. I,II

D. II, III

Answer: D



Watch Video Solution

133. Which of the following shows coiled RNA strand and capsomeres

A. Tobacco mosaic virus

B. Measles virus

C. Retrovirus

D. Polio virus

Answer: A



Watch Video Solution

134. Viruses have

A. Prokaryotic nucleus

B. Single chromosome

C. Both DNA and RNA

D. DNA enclosed in a protein coat.

Answer: D



Watch Video Solution

135. Bacterial viruses usually have

A. ss RNA

B. ds RNA

C. ss DNA

D. ds DNA

Answer: D



Watch Video Solution

136. Which of the following is wrongly match ?

(a) T.O. Diener-Viroids are found to be free DNA

(b) W.M. Stanley-Crystallised proteins

(c) M.W. Beijerinck-Contagium vivum fluidum

(d) D.J. Ivanowski-Microbes smaller than

bacteria cause mosaic disease of tobacco.

- A. T.O. Diener-Viroids are found to be free DNA
- B. W.M. Stanley-Crystallised proteins
- C. M.W. Beijerinck-Contagium vivum fluidum
- D. D.J. Ivanowski-Microbes smaller than bacteria cause mosaic disease of tobacco.

Answer: A



Watch Video Solution

137. The cryptogram of T_2 coliphage is

A. D/2, 130/30, X/X, B/O

B. D/2, 3/7, S/S, V/O

C. D/2, 137/40, S/S, B/O

D. R/1,54/92, X/X, V/O

Answer: A



Watch Video Solution

138. Match the lists and find the correct option

(a) Viroid inflecting tomato plant	(i) 6,500 nucleotides
(b) TMV	(ii) 300–400 nucleotides
(c) Polio virus	(iii) Two identical molecules of RNA
(d) Lentivirus	(iv) Many sided
	(v) Prion

A. (a)-(ii), (b)-(i), (c)-(iv), (d)-(iii)

B. (a)-(iii), (b)-(iv), (c)-(iv), (d)-(ii)

C. (a)-(ii), (b)-(iv), (c)-(v), (d)-(i)

D. (a)-(i), (b)-(iv), (c)-(v), (d)-(i)

Answer: A



[Watch Video Solution](#)

139. Enzymes are not found in

A. Fungi

B. Cyanobacteria

C. Virus

D. Algae.

Answer: C



[Watch Video Solution](#)

140. Select the wrong statement

- A. Viroids were discovered by D.J. Ivanowski
- B. W.M. Stanley showed that viruses could be crystallised
- C. The term 'contagium vivum fluidum' was coined by M.W. Beijerinck
- D. Mosaic disease of tobacco and AIDS in human beings are caused by viruses.

Answer: A



[Watch Video Solution](#)

141. Which of the following affect proteins and nucleic acids but not viruses

- A. Pressure
- B. Enzyme treatment
- C. Deneturation
- D. All the above

Answer: D



[Watch Video Solution](#)

142. Pick out the statement that does not apply to viroids

- A. Infection agents smaller than viruses
- B. Cause potato spindle tuber disease
- C. Have free DNA
- D. Lack protein coat

Answer: C



Watch Video Solution

143. Influenza virus has

- A. Single stranded RNA (-)
- B. Single stranded RNA (+)
- C. Double stranded RNA
- D. Single stranded DNA

Answer: A



Watch Video Solution

144. Which of the following is true about prions

A. Useful polysaccharide of galactose

B. High molecular weight infectious proteins

C. Small nucleic acid fragments capable of replication

D. Low molecular weight infectious proteins.

Answer: D



Watch Video Solution

145. Match the following and find the correct answer

I		II		III	
(a) Adsorption phase	(i) Assemblage of virions	(p) Complementary receptor sites			
(b) Lytic phase	(ii) Tail core is driven through bacterial cell wall	(q) Eclipse period			
(c) Maturation phase	(iii) Contact between phage parasite and bacterium	(r) Lysozyme			
(d) Penetration phase	(iv) Cell wall dissolution	(s) Tail sheath			

A. a-i-r, b-ii-s, c-iv-q, d-iii-p

B. a-iii-q, b-i-p, c-ii-r, d-iv-s

C. a-iii-p, b-iv-r, c-i-q, d-ii-s

D. a-iv-s, b-iii-p, c-i-r, d-ii-q

Answer: C



Watch Video Solution

146. Nucleic acid having 5-methyl uracil is genetic material in

A. HIV

B. QB bacteriophage

C. TMV

D. T_4 Phage.

Answer: D



Watch Video Solution

147. Which of the following statements is wrong for viroids

A. RNA is of high molecular weight

B. They lack a protein coat

C. They are smaller than viruses

D. They cause infections .

Answer: A



Watch Video Solution

148. Viroids differ from viruses in having

- A. DNA molecules with protein coat
- B. DNA molecules without protein coat
- C. RNA molecules with protein coat
- D. RNA molecules without protein coat

Answer: D



Watch Video Solution

Cyg

1. Who discovered virus to be nucleoprotein entity ?

A. Stanley

B. Bawden and Pirie

C. Enders

D. Lwoff

Answer:



Watch Video Solution

2. Who cultured the virus for the first time ?

A. Enders

B. Sinsheimer

C. Temin

D. Issaca and Lindemann.

Answer:



Watch Video Solution

3. Bacteriophages possess

- A. ds DNA
- B. ds and ss RNA
- C. ss DNA
- D. All the above.

Answer: D



[Watch Video Solution](#)

4. Poplomers are components of

- A. Capsid of viruses
- B. Envelope of viruses
- C. RNA of certain viruses
- D. Viral enzymes.

Answer: B



[Watch Video Solution](#)

5. Which virus possesses two RNA genomes ?

A. TMV

B. Potato Mosaic virus

C. HIV

D. Rotavirus

Answer: D



Watch Video Solution

6. Who crystallised and isolated viruses for the first time?

A. Ivanowsky

B. Takashahi and Rawlins

C. Mayer

D. Stanley

Answer:



Watch Video Solution

7. Virus was discovered by

A. Holmes

B. Ivanowsky

C. Cairns

D. Hayes and Lederberg.

Answer:



Watch Video Solution

8. Which of the following sequence is found in Rous sarcoma virus

- A. Single stranded DNA
- B. Double stranded DNA
- C. Single stranded RNA
- D. Double stranded RNA

Answer:



Watch Video Solution

9. An envelope surrounds the virus in

A. HIV

B. TMV

C. T_2

D. Lambda phage

Answer: A



Watch Video Solution

10. Which one does not occur in lytic life cycle of a virulent DNA phage?

- A. Eukaryotic nucleases differ from prokaryotic nucleases
- B. Cytosine bases of viral DNA are methylated
- C. Thymine bases of viral DNA are alkylated
- D. Cytosine is replaced by uracil

Answer:





Watch Video Solution

11. Prophage is viral genome

A. Repressor

B. Changing to temperate form

C. Integrase

D. Repressor and integrase.

Answer:



Watch Video Solution

12. The single stranded DNA of phage $\phi \times 174$ has 5400 nucleotides. If average protein contains 200 amino acids, how many different proteins could this phage DNA code?

A. Replicative DNA

B. Master strand

C. Plus strand

D. Negative strand

Answer:



Watch Video Solution

13. HIV causes reduction in

or

HIV virus affects..... In AIDS patient

A. red blood cells

B. lymphocytes

C. platelets

D. all of the above

Answer:



Watch Video Solution