



BIOLOGY

BOOKS - TRUEMAN BIOLOGY

Animal Kingdom

Mcq

1. Sponges are not found in

1. cold water

2. brackish water

3. sea water

4. sandy water

A. cold water

B. brackish water

C. sea water

D. sandy water

Answer: A



Watch Video Solution

2. Characteristic feature of sponge is the occurrence of

1. one exit and many mouths

2. canal system

3. choanocytes

4. all of the above

A. one exit and many mouths

B. canal system

C. choanocytes

D. all of the above

Answer: D



Watch Video Solution

3. In sponges digestion takes place in

A. paragastric cavity

B. stomach

C. osculum

D. food vecuole

Answer: D



Watch Video Solution

4. Water current through the body of spongs is maintained by

A. amoebocytes

B. porocytes

C. choanocytes

D. pinacocytes

Answer: C



5. Classification of Phylum Porifera is based on

- A. canal system
- B. spicules
- C. shape of choanocytes
- D. myocytes

Answer: B



6. Sponges have division of labour, which cells are found in gemmules for asexual reproduction?

A. Choanocytes

B. mesoderm

C. choanoderm

D. none of these

Answer: B



Watch Video Solution

7. Epidermis of a sponge is called

- A. pinacoderm
- B. mesoderm
- C. choanoderm
- D. none of these

Answer: A



Watch Video Solution

8. Endoskeleton of sponge is called

- A. pinacoderm
- B. mesoderm
- C. choanoderm
- D. none of these

Answer: C



Watch Video Solution

9. Ostium and osculum are surrounded by

A. 1.choanocytes

B. 2.myocytes

C. 3.pinacocytes

D. 4.spicules

Answer: B



Watch Video Solution

10. The larva of Sycon is

A. parenchymula

B. amphiblastula

C. redia

D. planula

Answer: B



Watch Video Solution

11. Rhagon type of larva is found in

A. Leucosolenia

B. Sycon

C. Spongilla

D. all sponges

Answer: C



Watch Video Solution

12. The phenomenon of regeneration in sponges was observed and explained by

A. John Ellis

B. Aristotle

C. H.W. Wilson

D. Robert E. Grant

Answer: C



Watch Video Solution

13. Assertion(A): In sponges, archaeocytes are totipotent.

Reason(R): They give rise to all types of amoebocytes and are self replicating.

A. Both A) and B) are true and the R) is the correct explanation of A)

B. Both A) and R) are true and the R) is not the correct explanation of A)

C. A) is true statement but R) is false

D. Both A) and R) are false

Answer: A



Watch Video Solution

14. A distinguishing feature of companion cells is that they arise from the same initial from which arises

- A. flame cells
- B. nephridiopores
- C. statocysts
- D. cnidoblasts

Answer: D



Watch Video Solution

15. Nutritionally Hydra is

- A. saprozoic
- B. herbivorous
- C. insectivorous
- D. carnivorous

Answer: D



[Watch Video Solution](#)

16. Hydra can digest all types of food except

A. proteins

B. fats

C. starch

D. sugars

Answer: C



[Watch Video Solution](#)

17. Which of the following tissues is absent in Hydra?

A. Connective tissue

B. Epithelial tissue

C. Muscular tissue

D. Nervous tissue

Answer: A



Watch Video Solution

18. Association of Zoochlorella and Hydra is the example of

- A. parasitism
- B. mutualism
- C. cohabitation
- D. commensalism

Answer: B



Watch Video Solution

19. Interstitial cells in hydra renew

- A. all the cells of Hydra
- B. a few cells of Hydra
- C. one type of cells of Hydra
- D. they do not renew cells.

Answer: A



Watch Video Solution

20. Who first discovered the regenerative ability of Hydra?

A. Aristotle

B. Linnaeus

C. Darwin

D. Tremley

Answer: D



Watch Video Solution

21. Nematocyst is

- A. non-living capsulated structure within the cnidoblast
- B. living part of cnidoblast
- C. lying outside the cnidoblast
- D. none of the above

Answer:



Watch Video Solution

22. Hypnotoxin is a poisonous fluid produced by

A. Parasitic protozoa

B. Nematocysts

C. Sponges

D. Ascaris

Answer: B



Watch Video Solution

23. Hydra can be

A. monoecious

B. marine

C. viviparous

D. monoecious or dioecious

Answer: D



Watch Video Solution

24. Portuguese Man of War is

A. Pennatula

B. Coral

C. Physalia

D. Obelia

Answer: C



Watch Video Solution

25. Metagenesis is found in

A. Obelia

B. Hydra

C. Tubipora

D. Metridium

Answer: A



Watch Video Solution

26. Pneumatophore is present in

A. Hydra

B. Obelia

C. Physalia

D. Aurelia

Answer: C



Watch Video Solution

27. Coral island is

A. Srilanka

B. Greenland

C. Lakshadweep

D. Madras

Answer: C



Watch Video Solution

28. In Hydra

- A. 1.One testis and one ovary present
- B. 2.One testes and many ovary present
- C. 3.many testes and many ovary present
- D. 4.Many testes and one ovary present

Answer: D



Watch Video Solution

29. Which of the following animals belongs to phylum Coelenterata?

A. Planula

B. Cystecierus

C. rhabdiform

D. wriggler

Answer: A



Watch Video Solution

30. Which one is mismatched ?

A. *Hydra vulgaris*- sea water

B. *Hydra gangetica*-- fresh water

C. *Obelia* -sea water

D. *Physalia*-sea water

Answer: A



[Watch Video Solution](#)

31. Find the odd example

A. 1. Sea lily

B. 2. Sea fan

C. 3. Sea cucumber

D. 4. Sea urchin

Answer: B



[Watch Video Solution](#)

32. Digestion in Hydra is

- A. intecellular
- B. intracellular
- C. both 1) and 2)
- D. none of these

Answer: B



Watch Video Solution

33. Primitive nervous system is formed in

A. 1.sponge

B. 2.cnidaria

C. 3.echinodermata

D. 4.annelida

Answer: D



Watch Video Solution

34. In ctenophores, anal pore/pores is/are

A. complete

B. incomplete

C. both 1) and 2)

D. none

Answer: A



Watch Video Solution

35. In ctenophores, anal pore/pores is/are

A. one

B. two

C. three

D. four

Answer: B



Watch Video Solution

36. Nervous system of ctenophores is similar to

A. Cnidaria

B. Platyheminthes

C. Nemathelminthes

D. annelida

Answer: A



Watch Video Solution

37. Paedogenesis is observed in

A. Ctenophores

B. Liver fluke

C. Both 1) and 2)

D. Ascaris

Answer: C



Watch Video Solution

38. Cleavage in ctenophores is

A. equal

B. radial

C. incomplete

D. determinate

Answer: D



Watch Video Solution

39. During development of ctenophores there is a ciliated spherical larve which is called

A. cysticercus

B. miracidium

C. cydippid larva

D. glochidium

Answer: C



Watch Video Solution

40. Ctenophora have some similarities (or relation) with the phylum

A. Porifera

B. Coelenterata

C. Annelida

D. Arthropoda

Answer: B



Watch Video Solution

41. Comb plates are found in

A. Adamsia

B. Aurelia

C. Neries

D. Pleurobrachia

Answer: B



Watch Video Solution

42. Bioluminescence is well marked in

A. flatworms

B. ctenophores

C. cnidarians

D. aschelminthes

Answer: B



Watch Video Solution

43. Biradial symmetry is found in

A. Beroes

B. Hydra

C. Sponges

D. Labeo

Answer: A



Watch Video Solution

44. Which animal would not survive, if there were no ponds of water?

A. Fasciola

B. Ascaris

C. Entamoeba

D. Taenia

Answer: A



Watch Video Solution

45. Alimentary canal is not found in

A. 1.Arachnida

B. 2.Apoda

C. 3.Gastropoda

D. 4.Cestoda

Answer: D



Watch Video Solution

46. The intermediate host in the life-cycle of liver fluke is

A. 1.Pila

B. 2.Snail

C. 3.Sheep

D. 4.pig

Answer: B



Watch Video Solution

47. Copulation in Taenia occurs between

A. two Taenia

B. Male and female taenia

C. two proglottides

D. two mature proglottides of different species.

Answer: C



Watch Video Solution

48. The seat of proliferation with fertilised eggs in the uterus of tapeworm are regularly detached. This is known as

A. scolex

B. strobila

C. neck

D. the whole body.

Answer: C



Watch Video Solution

49. The matured proglottides with fertilised eggs in the uterus of tapeworm are regularly detached. This is known as

A. proliferation

B. strobilation

C. apolysis

D. topolysis

Answer: C



Watch Video Solution

50. *T.solium* passes on to secondary (intermediate) host at which stage?

A. 1.Onchosphere

B. 2.Hexacanth

C. 3.Cysticercus

D. 4.Bladderworm

Answer: A



Watch Video Solution

51. The larva of Sycon is

- A. Liver fluke
- B. Planaria
- C. Tape worm
- D. Round worm

Answer: C



Watch Video Solution

52. A rasping organ with transverse teeth and present in the buccal cavity of a mollusc is called

- A. cysticercosis
- B. bladderworm
- C. hydatid cyst
- D. measly pork

Answer: D



Watch Video Solution

53. The following are found in *Taenia solium*.

Which one is the correct sequence?

A. Onchosphere, hexacanth, cysticercus,

matured proglottid, gravid

B. Matured proglottid, cysticercus, gravid,

onchosphere, gravid

C. Hexacanth, cysticercus, gravid, oncho-

sphere, matured proglottid

D. Gravid, onchosphere, cysticercus,
hexacanth, matured proglottid

Answer: A



Watch Video Solution

54. Give the correct match in the following

Column I

Column II

- | | |
|--------------------|-------------------|
| (A) Flame cells | <i>P</i> Sponges |
| (B) Collar Cells | <i>q</i> Hydra |
| (C) Stinging Cells | <i>r</i> Planaria |
| (D) — | <i>s</i> Ascaris |

A. A=r, B=p, C=q

B. $A=r, B=p, C=s$

C. $A=r, B=s, C=s$

D. $A=r, B=s, C=p$

Answer: A



Watch Video Solution

55. The intermediate host in the life-cycle of liver fluke is

A. Redia and miracidium

B. Cercaria and redia

C. Metacercaria and cercaria

D. Miracidium and metacercaria

Answer: D



Watch Video Solution

56. In contrast to Annelids the Platyhelminthes show

A. radial symmetry

B. presence of pseudocoel

C. bilateral symmetry

D. absence of body cavity

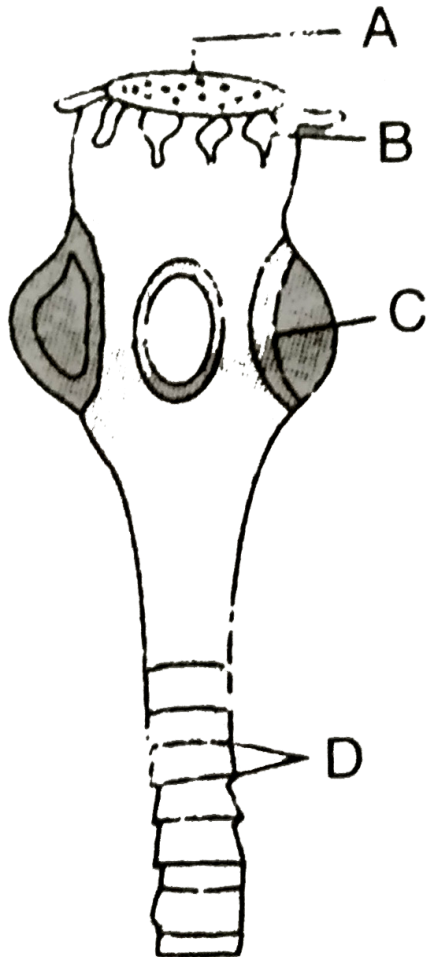
Answer: D



Watch Video Solution

57. In the given diagram, different parts are indicated by alphabets. Choose the answer, in which these alphabets correctly match with

the parts they indicate.



A. 1)A-Rostellum

B- Hooks

C-Sucker

D-Proglottids

B. 2)A-Suctorial mouth

B-Hooks

C-Sucker

D- Segments

C. 3)A-Mouth

B-Tentacles

C-Sucker

D- Segments

D. 4)A-Sucker

B-Hairs

C-Ring

D-Proglottids

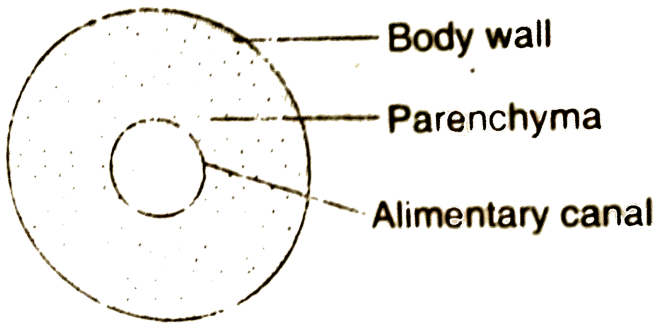
Answer: A



Watch Video Solution

58. The cross-section of the body of an invertebrate is given below. Identify the

animal, which has this body plan.



A. Cockroach

B. Roundworm

C. Planaria

D. Earthworm

Answer: C



Watch Video Solution

59. Organs of excretion and osmoregulation in Platyhelminthes are

- A. Contractile vacuoles
- B. Flame cells
- C. Nephridia
- D. Hepatic caecae

Answer: B



Watch Video Solution

60. Which one of the following animals possesses high regeneration capacity?

A. Planaria

B. Taenia

C. Salpa

D. Periplaneta

Answer: A



Watch Video Solution

61. One example of animals having a single opening to the outside that serves both as mouth as well as anus is

A. Octopus

B. Asterias

C. Ascidia

D. Fasciola

Answer: D



Watch Video Solution

62. Roundworms differ from flatworms in having a

- A. circulatory system
- B. pseudoceol
- C. dorsal nerve cord
- D. circular muscle layer

Answer: B



Watch Video Solution

63. Phasmids of *Ascaris* are

A. (1) tactile

B. (2) chemoreceptor

C. (3) photoreceptor

D. (4) 1 and 3

Answer: B



Watch Video Solution

64. Male *Ascaris* can be differentiated from female *Ascaris* by

- A. Pineal setas
- B. 50 parts of preanal papillae
- C. 5 pairs of postanal papillae
- D. all of them

Answer: D



Watch Video Solution

65. The lips of Ascaris are

- A. 1.denticulate
- B. 2.cartilaginous
- C. 3.smooth
- D. 4.bony

Answer: A



Watch Video Solution

66. Cuticle of *Ascaris* is noncellular and beneath the cuticle in *Ascaris* lies a thin epidermis having scattered nuclei and no separate cells, this epidermis is

- A. 1.multicellular
- B. 2.syncytial
- C. 3.aseptate
- D. 4.none of these

Answer: B



Watch Video Solution

67. Excretory structures in adult *Ascaris* are

- A. renette cells
- B. excretory canals
- C. Nephridia
- D. malpighian tubules

Answer: A



Watch Video Solution

68. Moulting of Second instar larva of *Ascaris* occurs in

- A. intestine
- B. sand
- C. blood vessels
- D. lungs

Answer: D



Watch Video Solution

69. Eggs containing the second state juvenile are

A. Eggs containing the second stage

juvenile are

B. embryonated eggs

C. fertilized eggs

D. unfertilized eggs

Answer: A



Watch Video Solution

70. The final moult of the rhabditiform larva of *Ascaris* occurs in human

A. heart

B. liver

C. intestine

D. lungs

Answer: C



Watch Video Solution

71. Second state larva of liver fluke goes on three week typical wandering tour. The course of travel is as follows,

- A. Small intestine,liver, heart, lung
- B. small intestine, lung, liver
- C. small intestine, liver, lung, heart
- D. liver, heart, lung, small intestine

Answer: A



Watch Video Solution

72. Cleavage in the egg of Ascaris is

- A. holoblastic and determinate type
- B. holoblastic and indeterminate type
- C. discoidal
- D. superficial

Answer: A



Watch Video Solution

73. Which larval stage of Ascaris is infective?

- A. first and fourth
- B. second and third
- C. first and second
- D. third and fourth.

Answer: C



Watch Video Solution

74. Life span of Ascaris is

A. 6-9 months

B. 9-12 months

C. 4-10 months

D. 10-12 weeks

Answer: B



Watch Video Solution

75. Which of the following sense organs is present in *Ascaris* are chemoreceptors and located in anterior part?

- A. pineal spicules
- B. pineal setate
- C. amphids
- D. copulatory Bursa.

Answer: C



Watch Video Solution

76. Cyclope is intermediate host of

- A. Planaria
- B. Echinococcus
- C. Dracunculus
- D. Ancylostoma

Answer: C



Watch Video Solution

77. Oil of Chenopodium and drug named Alcopar are used in

A. Malaria

B. typhoid

C. tuberculosis

D. ascariasis

Answer: D



Watch Video Solution

78. Filariasis is caused by

- A. Taenia solium
- B. Fasciola hepatica
- C. Ascaris lumbricoides
- D. Wuchereria bancrofti

Answer: D



Watch Video Solution

79. The technical name of guineaworm is

A. Ancylostoma

B. Enterobius Trichinella

C. Dracunculus

D.

Answer: D



Watch Video Solution

80. Ascaris is

A. Ancylostoma and ureotelic

B. Ureotelic and uricotelic

C. uricotelic

D. ammonotelic and ureotelic

Answer: A



Watch Video Solution

81. Which of the following is an unsegmented and ovoviviparous worm?

A. Ascaris

B. Filaria

C. Taenia

D. Fasciola

Answer: B



Watch Video Solution

82. The common name of *Ancylostoma* is

A. Pinworm

B. Whipworm

C. Hookworm

D. Guineaworm

Answer: C



Watch Video Solution

83. Filarial larvae are found in man's (host)

A. smears of spleen

B. biopsy of liver

C. peripheral blood at mid night

D. smear of intestinal contents

Answer: C



Watch Video Solution

84. Swelling of legs and scrotum occurs due to

A. blockage of lymphatic vessel by a

number of worms

B. accumulation of lymph in these organs

C. accumulation of dead and living worms,

lead to swelling

D. 1) and 2) are correct

Answer: D



Watch Video Solution

85. Which of the following parts of the human body is least affected by filariasis?

A. scrotum

B. Leg

C. Mammary gland

D. Penis

Answer: D



Watch Video Solution

86. Ancylostoma causes

A. itching

B. inflammation of the skin

C. pulmonary infection

D. all of the above

Answer: D



Watch Video Solution

87. Microfilariae are carried by

A. Sandfly

B. Culex mosquito

C. Anopheles mosquito

D. Housefly

Answer: B



Watch Video Solution

88. Wuchereria causes a disease in which parts of India

A. Filariasis-South

B. Elephantiasis- Bihar

C. Elephantiasis- Karnatka

D. none of the above

Answer: B



Watch Video Solution

89. In India, filariasis is transmitted by

1. *Culex fatigans*
2. *Anopheles culicifacies*
3. *Musca domestica*
4. *Aedes aegypti*

A. *Culex fatigans*

B. Anopheles culicifacies

C. Musca domestica

D. Aedes aegypti

Answer: A



Watch Video Solution

90. In *Ascaris*, 3rd moulting takes place in

1. intestine

2. lung

3. liver

4. egg

A. intestine

B. lung

C. liver

D. egg

Answer: B



Watch Video Solution

91. Differentiating trait of Ascaris is

1. sexual dimorphism and rhabditiform larva

2. unisexual and digenetic parasite

3. pseudocoelom and metameric
segmentation

4. hermaphrodite and pseudocoelom

A. sexual dimorphism and rhabditiform
larva

B. unisexual and digenetic parasite

C. pseudocoelom and metameric
segmentation

D. hermaphrodite and pseudocoelom

Answer: A



Watch Video Solution

92. Life span of *Ascaris* is

A. soil, lung, intestine

B. soil, alveoli, lung

C. soil, intestine, lung

D. liver, stomach, intestine

Answer: C



Watch Video Solution

93. Which of the following is not a part of the small intestine of frog ?

A. Ascaris

B. Tapeworm

C. Hookworm

D. Amoeba

Answer: C



Watch Video Solution

94. The dioecious animal is

A. Liverfluke

B. Aurelia

C. Tapeworm

D. Earthworm

Answer: B



Watch Video Solution

95. Ascaris is characterized by the

A. presence of neither true coelom nor

metamerism

B. presence of true coelom but absence of

metamerism

C. presence of true coelom and

metamerism (metamerisation)

D. absence of true coelom by presence

Answer: A



Watch Video Solution

96. The parasite which completes its life cycle in a single host is

A. Fasciole hepatica

B. Plasmodium vivax

C. Taehia solium

D. Ascaris lumbricoides

Answer: D



Watch Video Solution

97. Match the List I with List II and select the correct option.

List I	List II
A Protozoa	<i>Pennatula</i>
B Aschelminthes	<i>Beroe</i>
C Porifera	<i>Monocystis</i>
D Ctenophora	<i>Wuchereria</i>
E Cnidaria	<i>Cliona</i>

A. A-3, B-5, C-4, D-1, E-2

B. A-4, B-3, C-5, D-, E-1

C. A-3, B-4, C-5, D-2, E-1

D. A-2, B-4, C-5, D-3, E-1

Answer: C



Watch Video Solution

98. What is the common between earthworm, leech and centipede?

- A. These are hermaphrodite
- B. These have no legs
- C. These have a ventral nerve cord
- D. These have Malpighian tubules

Answer: C



Watch Video Solution

99. Trochophore larva present in the development of

A. Earthworm

B. Nereis

C. Leech

D. Frog

Answer: B



Watch Video Solution

100. Parapodia are present in

A. Leech

B. Earthworm

C. Nereis

D. Housefly

Answer: C



Watch Video Solution

101. Heteroneris is a

- A. another name of Nereis
- B. genus of an annelid
- C. asexual phase of Nereis
- D. sexual phase of Nereis

Answer: D



Watch Video Solution

102. Leech secretes which of the following anticoagulant

A. Hirudin

B. Heparin

C. Serotonin

D. Histamine

Answer: A



Watch Video Solution

103. The unique characteristic of phylum annelida is

A. coelom

B. nephridia

C. hermaphrodite

D. cingulum

Answer: B



Watch Video Solution

104. Blood pigment of earthworm is

A. Haemoglobin

B. cyanin

C. Haemocyanin

D. Haematin

Answer: B



Watch Video Solution

105. Blood pigment of annelids is

A. haemoglobin

B. cyanin

C. haematin

D. haemocyanin

Answer: A



Watch Video Solution

106. A trait common in Leech and Mosquito is

A. 1. anticoagulant

B. 2. cellular asexual reproduction

C. 3. cellular level of organisation

D. 4. absence of asexual phase

Answer: A



Watch Video Solution

107. Hirudinaria is

- A. omnivorous
- B. carnivorous
- C. herbivorous
- D. sanguivorous

Answer: D



Watch Video Solution

108. Body cavity of annelids/Nereis is

A. schizocoel

B. enterocoel

C. pseudocoel

D. none of these

Answer: D



Watch Video Solution

109. Number of eyes present on the prostomium of Nereis is

A. four

B. three

C. two

D. one

Answer: A



Watch Video Solution

110. Which of the following is common in Annelida and Arthropoda?

- A. Basal nerve cord
- B. Dorsal nerve cord
- C. Ventral nerve cord
- D. Anterior nerve cord

Answer: C



Watch Video Solution

111. Which is not correctly matched?

A. Annelida- Enterocoelomate

B. Arthropoda - Schizocoelomate

C. Platyhelminthes - Acoelomate

D. Nematelminthes - Pseudocoelomate

Answer: A



Watch Video Solution

112. A) It is fresh water matamerically segmented prostostome

B) the clitellum is absent

C) Its larval form is Trochophore

D) It is unisexual

E) The nervous system is found in the epidermis

Which one of the above is true of 'Paddle worm'?

A. A, B and E

B. B,C and E

C. B,C and D

D. C, D and E

Answer: C



Watch Video Solution

113. A pair of male genital pores in earthworm are present on the ventro-lateral sides of the

1. 14th segment

2. 18th segment

3. 10th segment

4. 15th segment

A. 14th segment

B. 18th segment

C. 10th segment

D. 15th segment

Answer: B



Watch Video Solution

114. The stages between larval moults in an insects are called

1. pupae

2. instars

3. grubs

4. caterpillars

A. pupae

B. instars

C. grubs

D. caterpillars

Answer: B



Watch Video Solution

115. Which set includes pathogenic arthropods

1. Tse-tse fly, mosquito, flea-plague

2. Crab, Culex, spider

3. Anopheles, culex, cray-fish

4. Silver-fish, housefly, sand-fly

A. Tse-tse fly, mosquito, flea-plague

B. Crab, Culex, spider

C. Anopheles, culex, cray-fish

D. Silver-fish, housefly, sand-fly

Answer: A



Watch Video Solution

116. Which one is not a fish

A. Cat fish

B. Dog fish

C. Silver fish

D. Lung Fish

Answer: C



Watch Video Solution

117. The desert locust would be living in isolation or near locality will depend upon

A. 1.its spices

B. 2.its kinds

C. 3.its genes

D. 4.its food and climatic conditions

Answer: C



Watch Video Solution

118. Wasp, gilamonster, centipede, scorpoin
and honey bee are

A. terrestrial

B. viviparous

C. social

D. poisonous

Answer: D



Watch Video Solution

119. Glow worm is

A. mollusc

B. annelid

C. insect

D. helminth

Answer: C



Watch Video Solution

120. Which of the following is a viviparous animal?

A. Prawn

B. Scorpion

C. Silverfish

D. Leech

Answer: B



Watch Video Solution

121. Respiratory pigment in insects is

A. haemoglobin

B. cytochrome

C. haemocyanin

D. none

Answer: D



[Watch Video Solution](#)

122. Which one is not not an insect

A. Housefly

B. Butterfly

C. Spider

D. Moth

Answer: C



[Watch Video Solution](#)

123. How many moles of electrons weigh one kilogram ?

A. 25000

B. 100

C. 1000

D. 2000

Answer: D



Watch Video Solution

124. At a time a female Anopheles lays eggs singly in water, which are approximately

A. 40-100 eggs

B. 150-300 eggs

C. 100-200 eggs

D. more than 1000 eggs

Answer: A



Watch Video Solution

125. Mouth parts of female Anopheles are suitable for

A. chewing

B. piercing and sucking

C. chewing and cutting

D. sucking

Answer: B



Watch Video Solution

126. Which mouth part occurs in female Anopheles but not in males?

A. Proboscis

B. Mandibles

C. Antennae

D. Maxillae

Answer: D



Watch Video Solution

127. Johnston's organs are present in

- A. abdomen of housefly
- B. head of cockroach
- C. antennae of mosquito
- D. none of the above

Answer: C



Watch Video Solution

128. Complete metamorphosis is found in

A. 1.Bed bug

B. 2.Locust

C. 3.Mosquito

D. 4.Silver fish

Answer: C



Watch Video Solution

129. Proboscis is :

A. labium

B. labrum-epipharynx

C. hypopharynx

D. all of these

Answer: A



Watch Video Solution

130. Which of the following are correspondingly the pathogen and vector of malaria?

1. Leishmania and sandfly

2. Plasmodium and Anopheles

3. Trypanosoma and rat flea

4. Trichomonas and blowfly

A. Leishmania and sandfly

B. Plasmodium and Anopheles

C. Trypanosoma and rat flea

D. Trichomonas and blowfly

Answer: B



Watch Video Solution

131. Aedes is the carrier of

1. dengue fever

2. malaria

3. yellow fever

4. both 1) and 3)

A. dengue fever

B. malaria

C. yellow fever

D. both 1) and 3)

Answer: D



132. Larva of Mosquito is

1. grub

2. maggot

3. wriggler

4. caterpillar

A. grub

B. maggot

C. wriggler

D. caterpillar

Answer: C



Watch Video Solution

133. Which of the following insects is useful to man?

- A. Dragon fly
- B. Grass hopper
- C. Moth
- D. Termite

Answer: A



Watch Video Solution

134. What is obtained from the body of insects?

A. 1.Pearl

B. 2.Sugar

C. 3.Lac

D. 4.Shagreen

Answer: C



Watch Video Solution

135. Adult butterfly can ingest food which is

A. solid and liquid

B. only solid

C. only liquid

D. only gas

Answer: C



[Watch Video Solution](#)

136. Muga silk worm feeds on

A. fat bodies

B. malpigan tubules

C. poison

D. salivary glands

Answer: D



[Watch Video Solution](#)

137. Rearing of silkworm is called:

A. apiculture

B. pisciculture

C. agriculture

D. sericulture

Answer: D



Watch Video Solution

138. Who was the first to draw attention to the fact that bees communicate by means of definite movements now called "bee dances"?

A. T.H. Huxley

B. Andreas Vesalius

C. A.I. Oparin

D. Ernest Spytzner

Answer: D



Watch Video Solution

139. Which scientist decoded the language of honey bee and was awarded Nobel prize for his work?

A. Carolus Linnaeus

B. Charles darwin

C. Karl von Frisch

D. William Harvey

Answer: C



Watch Video Solution

140. "Royal jelly" is secreted by worker Honeybees. Name the gland which secretes "royal jelly".

- A. Labial gland
- B. Maxillary glands
- C. Mandibular gland
- D. Labral gland

Answer: B



Watch Video Solution

141. In Honey bee drones (males) are produced from

A. unfertilized eggs

B. fertilized eggs

C. royal jelly fed larva from fertilized eggs

D. unfertilized eggs not cared by workers at

all

Answer: A



Watch Video Solution

142. Which of the following are vector hosts?

A. Rabbit, snake, lizard, frog

B. Sand fly, tsetse fly, house fly, culex

C. Tsetse fly, Trypanosoma, sand fly,
leishmania

D. House fly, frog, sand fly

Answer: B



Watch Video Solution

143. The best method to dispose night soil is

A. mechanical control

B. physical control

C. biological control

D. both 1) and 2)

Answer: C



Watch Video Solution

144. Bed bug transmits

A. typhus fever

B. leprosy

C. 1) and 2)

D. kala azar

Answer: C



Watch Video Solution

145. Locusts are found breeding in India in

A. Uttar pradesh

B. Rajasthan

C. Kerala

D. Kashmir

Answer: B



Watch Video Solution

146. Rearing of silkworm is done on large scale
in

A. china

B. India

C. japan

D. All of these

Answer: D



Watch Video Solution

147. Yellow fever is transmitted by

- A. female culex
- B. female anophilies
- C. female aedes
- D. housefly

Answer: A



Watch Video Solution

148. True and complete metamorphosis occurs
in

A. Silver

B. Bed bugs

C. Grasshoppers

D. Moths and mosquitoes.

Answer: D



Watch Video Solution

149. From which stage of silk moth, the silk is obtained?

A. Adult

B. Caterpillar

C. Egg

D. Pupa

Answer: D



Watch Video Solution

150. Book lungs are the respiratory organs found in

A. insects

B. crustaceans

C. millipedes

D. scorpions

Answer: D



Watch Video Solution

151. In honey bees, the royal jelly is fed to

A. 1.queen

B. 2.drones

C. 3.larva that becomes the queen

D. 4.both 1) and 3)

Answer: D



Watch Video Solution

152. Main function of halteres (reduced wings) on the metathroax of mosquito is to

- A. 1.provide balance in flight
- B. 2.speed up the light
- C. 3.emit sound
- D. 4.frighten enemies.

Answer: A



Watch Video Solution

153. Which of the following insects is regarded as greatest mechanical carrier of diseases?

A. 1.Xenopsella

B. 2.Musca

C. 3.Cimex

D. 4.Pediculus

Answer: B



Watch Video Solution

154. Pollen basket occurs in Honey Bee on

A. prothoracic leg

B. mesothoracic leg

C. methathoracic leg

D. union of thorax and abdomen

Answer: C



Watch Video Solution

155. In which bee, the wax glands are present in

A. worker

B. drone

C. queen Bee

D. both queen and worker bees

Answer: A



Watch Video Solution

156. Which one is a tracheate group

A. 1.King Crab- Scorpion- Housefly

B. 2.Crab- Centipede - Cockroach

C. 3.Spider- Peripatus - Mosquito

D. 4.Bed bug- Sandfly - Silkworm

Answer: D



Watch Video Solution

157. Arrhenotoky is parthenogenetic development found in

A. all insects

B. mosquitoes

C. butterflies

D. honey, bees, wasps and ants

Answer: D



Watch Video Solution

158. Trilobites evolved in

A. precambrian

B. ordovician

C. silurian

D. cambrian

Answer: D



Watch Video Solution

159. Silk fibre contains protein

- A. fibroin and sericine
- B. collagen and elastin
- C. fibrin and sericine
- D. chondrin and mucin

Answer: A



Watch Video Solution

160. Mostly widely reared Honey Bee species of india is

A. *Apis mellifera*

B. *Apis dorsata*

C. *Apis indica*

D. *Apis florea*

Answer: C



Watch Video Solution

161. Cray fish is

A. crustacean

B. edible fish

C. poisonous fish

D. mammal.

Answer: A



Watch Video Solution

162. Honey is acidic and mainly consists of

1. polysaccharides

2. disaccharides

3. monosaccharides

4. fats

A. polysaccharides

B. disaccharides

C. monosaccharides

D. fats

Answer: C



Watch Video Solution

163. If the honey bee is performing round dance it is conveying the information of food source from the hive at a distance of

1. 50 metres
2. 100 metres
3. 1000 metres
4. 2000 metres

A. 50 metres

B. 100 metres

C. 1000 metres

D. 2000 metres

Answer: A



Watch Video Solution

164. Arthropods lack

1. jointed appendages

2. cilia

3. respiratory organs

4. segmented body

A. jointed appendages

B. cilia

C. respiratory organs

D. segmented body

Answer: B



Watch Video Solution

165. Common among Moth, Frog and Mosquito is

- A. body differentiated into head, throat and abdomen
- B. life history is carried out partly in water
- C. larvae feed on a different type of food
- D. skin acts on main respiratory organ

Answer: C



Watch Video Solution

166. What is common amongst Earthworm, Cockroach and Centipede?

- A. metamorphism
- B. sexual dimorphism
- C. chitinous exoskeleton
- D. haemocoel

Answer: C



Watch Video Solution

167. What is true about Nerels, Scorpion, Cockroach and Silver fish?

- A. None of them is aquatic
- B. They all belong to the same phylum
- C. They all have jointed paired appendages
- D. They all possess dorsal heart

Answer: C



Watch Video Solution

168. In which of the following organisms, self fertilization is seen ?

A. Honey bee

B. Frog

C. *Ascaris lumbricoides*

D. Rabbit

Answer: A



Watch Video Solution

169. Which one of the following pairs of items correctly belongs to the category of organs mentioned against it?

A. Nictitating membrane and blind spot in human eye - Vestigial organs

B. Nephridia of Earth worm and Malpighian tubules of Cockroach - Excretory organs

C. Wings of Honey bee and wings of Crow - Homologous organs

D. Thorn of *Bougainvillea* and tendrils of

Cucurbita -Analogous organs

Answer: B



Watch Video Solution

170. Karl von Frisch was awarded Nobel prize in medicine or physiology in

A. 1970

B. 1972

C. 1973

D. 1974

Answer: C



Watch Video Solution

171. From which stage of silk moth, the silk is obtained?

A. 3rd instar larva

B. 4th instar larva

C. 5th instar larva

D. pupa

Answer: D



Watch Video Solution

172. Name one disease of mulberry silk worm caused by Protozoa an(Nosema bombycis)

A. Pebrine

B. Graseri

C. Flacheir

D. Mascardine

Answer: A



Watch Video Solution

173. Centrolecithal eggs are characteristic of

A. Frog

B. Mammals

C. Insecta

D. Star fish

Answer: C



Watch Video Solution

174. In which of these animals antennal gland functions as excretory organ?

A. Human being

B. Cockroach

C. Planaria

D. Prawn

Answer: D



Watch Video Solution

175. The scientific name of Asian tiger mosquito is

A. *Aedes aegypti*

B. *Aedes albopictus*

C. *Aedes taeniarhynchus*

D. *Aedes albolineatus*

Answer: B



Watch Video Solution

176. Life span of Honey Bee drone is

A. 1) 3--4 months

B. 2) 1--2 months

C. 3) 6--7 months

D. 4) 10-12 months

Answer: B



Watch Video Solution

177. Limnology is related to

A. nympho

B. trochophore

C. cocon

D. caterpillar

Answer: D



Watch Video Solution

178. Name one disease of mulberry silk worm caused by Protozoa an(Nosema bombycis)

A. 5th abdominal segment

B. 2nd thoracic segment

C. head

D. 8th addominal segment

Answer: D



179. Worker Bees are :

A. 1.sterile females

B. 2.fertile females

C. 3.when queen is absent then act as
fertile females

D. 4.sterile drones

Answer: A



180. Peripatus is a connecting link between :

1. Annelida and Arthropoda
2. Coelenterata Porifera
3. Ctenophora and Platyhelminthis
4. Mollusca and Echinodermata

A. Annelida and Arthropoda

B. Coelenterata Porifera

C. Ctenophora and Platyhelminthis

D. Mollusca and Echinodermata

Answer: A



Watch Video Solution

181. which one of the following is used as biological insecticide ?

1. Tiger beetle
2. Caterpillar
3. Silkmoth
4. Mazra poka

A. Tiger beetle

B. Caterpillar

C. Silkmoth

D. Mazra poka

Answer: A



Watch Video Solution

182. What is the genetic name of Sea hare?

1. Pila

2. Teredo

3. Aplysia

4. Sepia

A. Pila

B. Teredo

C. Aplysia

D. Sepia

Answer: C



Watch Video Solution

183. Ink-gland is absent in

A. 1.Loligo

B. 2.Sepia

C. 3.Octopus

D. 4.Nautilus

Answer: D



Watch Video Solution

184. Which set has the same number of s electrons?

A. Sea cow, seal, whale, bat

B. King crab, cockroach, silver fish, spider

C. cuttle fish, cray fish, hag fish,

D. Sea feather, sea urchin, star fish

Answer: C



Watch Video Solution

185. The method of induction of foreign particles between the mantle and the shell of pearl oyster for the simulation of pearl formation was introduced in Japan by

A. Mikimoto

B. Katu

C. Haeckel

D. Von Mohl

Answer: A



Watch Video Solution

186. The most primitive mollusc and living fossil is

A. Neopilina

B. Chiton

C. Dentalium

D. Patella

Answer: A



Watch Video Solution

187. Glochidium larva belongs to

A. Pila

B. Fresh water mussel

C. Cypraea

D. Loligo

Answer: B



Watch Video Solution

188. The respiratory organs in a fresh water mussel are

A. pulmonary sac

B. book lungs

C. Gills

D. tracheae

Answer: C



Watch Video Solution

189. Life cycle of liver fluke is digenetic. Its intermediate hosts are fresh water snails which are

A. Lymnaea and Planorbis

B. Pila and Lymnaea

C. Limax and Helix

D. Limax and Onchidium

Answer: A



Watch Video Solution

190. Study of mollusca is called

A. Malacology

B. Conchology

C. Mammolgy

D. Mastology

Answer: A



Watch Video Solution

191. The elephant tusk shell is

A. Dentalium

B. Limax

C. Cypraea

D. Nautilus

Answer: A



Watch Video Solution

192. Ink glands or sacs produce coloured pigment which is ejected out into the water

and form smoke screen for offence and defence. Such specs are found in

A. Sepia

B. Pecten

C. Mytilus

D. Teredo

Answer: A



Watch Video Solution

193. The largest invertebrate is

A. 1.Giant octopus

B. 2.Giant squid

C. 3.Giant snail

D. 4.giant Clam

Answer: B



Watch Video Solution

194. one example of complete metamorphosis



Watch Video Solution

195. Visceral mass is characteristic of

- A. arthropods
- B. molluscs
- C. echinoderms
- D. All of these

Answer: B



Watch Video Solution

196. Respiratory pigment of molluscs is

- A. 1.haemocyanin
- B. 2.haemoglobin
- C. 3.erythrocruorin
- D. 4.none of these

Answer: A



Watch Video Solution

197. An internal shell is absent in

A. Sepia

B. Loligo

C. Pila

D. Both 1) and 2)

Answer: D



Watch Video Solution

198. Osphradium of *Pila globosa* is

- A. chemoreceptor
- B. photoreceptor
- C. thermoreceptor
- D. tangoreceptor

Answer: A



Watch Video Solution

199. A mollusc previously used as currency is

A. Turbinella

B. Dentalium

C. Pila

D. Cypraea

Answer: D



Watch Video Solution

200. Study of (molluscan) shells is called

A. conchology

B. malacology

C. entomology

D. mastology

Answer: A



Watch Video Solution

201. A rasping organ with transverse teeth and present in the buccal cavity of a mollusc is called

A. 1. Dental plate

B. 2. Radula

C. 3. Tongue

D. 4. Rasper

Answer: B



Watch Video Solution

202. Pila respire by

- A. ctenidium
- B. pulmonary sac
- C. mantle cavity
- D. all of the above

Answer: D



Watch Video Solution

203. Torsion occurs in the visceral mass of

A. cephalopods

B. gastropods

C. scaphopods

D. pelecypods

Answer: B



Watch Video Solution

204. Excretory organs of Unio are

A. Organs of Bojanus

B. Keber's organ

C. 1) and 2)

D. Malpighian tubules

Answer: C



Watch Video Solution

205. One of the arms of a male mollusc is used to transfer sperms into the female. Which is this animal?

A. 1.Pila

B. 2.Loligo

C. 3.Octopus

D. 4.Teredo

Answer: C



Watch Video Solution

206. 2 types of metamorphosis



Watch Video Solution

207. Pearl producing Indian species is

- A. *Pinctada vulgaris*
- B. *Pinctada indica*
- C. *Ostrea indica*
- D. *Ostrea vulgaris*

Answer: A



Watch Video Solution

208. Closed circulatory system occurs in

A. 1.Snail

B. 2.Cockroach

C. 3.Cuttle fish

D. 4.All of these

Answer: C



[Watch Video Solution](#)

209. Trochophore larve occurs in

- A. 1. Annelida and Porifera
- B. 2. Coelenterata and Annelida
- C. 3. Mollusca and Coelenterata
- D. 4. Annelida and Mollusca

Answer: D



[Watch Video Solution](#)

210. What is true metamorphosis



Watch Video Solution

211. Eyes of pila/molluscs occur over

- A. 1.Pseudopodia
- B. 2.Ommatophores
- C. 3.Cephalic tentacles
- D. 4.Both 2) and 3)

Answer: B



Watch Video Solution

212. Which of the following have eye structure nearest to that of vertebrates?

A. insecta

B. polychaeta

C. cephalopoda

D. crustacea

Answer: C



Watch Video Solution

213. Ammonites fossil shell remains of

A. 1.pelecypods

B. 2.cephalopods

C. 3.gastropods

D. 4.scaphopods

Answer: B



[Watch Video Solution](#)

214. Name one example of complete and incomplete metamorphosis



[Watch Video Solution](#)

215. Asymmetry develops due to torsion in mollusc

A. Octopus

B. Pila

C. Teredo

D. Dentallium

Answer: B



Watch Video Solution

216. The devil fish and sea hare are

A. Molluscs

B. Crustaceans

C. Coelenterates

D. Marine fish and mollusks

Answer: D



Watch Video Solution

217. Gill is monopectinate in

A. Unio

B. Chiton

C. Patella

D. Pila

Answer: A



Watch Video Solution

218. In Star-fish which organ has dual function of locomotion and respiration?

A. Axial sinus

B. Ampullae

C. Tube feet

D. Tiedmann's body

Answer: C



Watch Video Solution

219. Autotomy is observed in

A. feather star

B. starfish

C. sea cucumber

D. all of the above

Answer: D



Watch Video Solution

220. one example of incomplete metamorphosis



Watch Video Solution

221. Connecting link between chordates and non chordates

- A. deuterostomatic: tube-with-a tube plan
- B. protostomatic, tube-within-a-tube plan
- C. water vascular system
- D. kidneys

Answer: A



Watch Video Solution

222. The founder of taxonomy is Aristotle. The father of modern Taxonomy who wrote

Species Plantarum and provided a basis for classification of plants, is

A. a fresh water echinoderm

B. a masticatory apparatus connected with digestive system in sea urchin

C. a seive plate connected with ambulacral system in sea water

D. an ancient Greak ship lantern shaped structuer connected with balancing system of sea lily.

Answer: B



Watch Video Solution

223. Comb plates are found in

- A. sea hares
- B. sea lemons
- C. star fishes
- D. sea lions

Answer: C



Watch Video Solution

224. In which of the echinoderm, the arms, spines and pedicellaria are absent?

A. Sea cucumber

B. Sea lily

C. Sea star

D. Sea urchin

Answer: A



225. Chief excretory matter in echinoderms I

A. ammonia

B. urea

C. uric acid

D. amino acid

Answer: A



226. In echinoderms skeleton is

- A. 1.calcareous
- B. 2.chitinous
- C. 3.siliceous
- D. 4.tunicin made

Answer: A



Watch Video Solution

227. Water vascular system is originated from

A. 1.ectoderm

B. 2.mesoderm

C. 3.endoderm

D. 4.both 1) and 3)

Answer: C



Watch Video Solution

228. Cuvierian organs are found in

A. Asterias

B. Holothuria

C. Echinus

D. Antedon

Answer: B



Watch Video Solution

229. Internal endoskeleton of starfish is made up of calcareous plates called ossicles. Ossicles are derived from

- A. 1.ectoderm
- B. 2.mesoderm
- C. 3.endoderm
- D. 4.both 1) and 3)

Answer: B



Watch Video Solution

230. Anus is absent in

A. Antedon

B. Ophiothrix

C. Holothuria

D. Echinus

Answer: A



Watch Video Solution

231. Pedicellaries are absent in

- A. Ophiothrix, holothuria, Antedon
- B. Echinus, Clypeaster, Echinocardium
- C. Pentaceros, Asterias, Astropecten
- D. Both 2) and 3)

Answer: A



Watch Video Solution

232. Spines are absent in

A. Star fish

B. sea urchin

C. Brittle star

D. Sea cucumber and feather star

Answer: D



Watch Video Solution

233. Which one is the common ancestral larval form of echinoderms, hemichordates and chordates ?

A. Tornaria

B. Bipinnaria

C. Dipleurula

D. Trochophore

Answer: C



Watch Video Solution

234. Evisceration is found in

A. 1.Echinodermata

B. 2.Annelida

C. 3.Coelenterata

D. 4.Chordata

Answer: A



Watch Video Solution

235. Deuterostomate and enterocoelomate invertebrate is

A. 1.Pila

B. 2.Ascaris

C. 3.Aphrodite

D. 4.Asterias

Answer: D



Watch Video Solution

236. What is correct?

- A. 1. Blue-green alga is a kind of fungus.
- B. 2. Sea Horse is related to Dolphin.
- C. 3. Maiden Hair Tree is an angiosperm.
- D. 4. Sea Lily is an echinoderm

Answer: D



Watch Video Solution

237. Diagnostic character of the phylum Echinodermata is the presence of

- A. spiny skin
- B. pedicellariae
- C. water vascular system
- D. All of these

Answer: D



Watch Video Solution

238. In can regenerate entire alimentary canal

A. 1.Fish

B. 2.Bird

C. 3.Amphibians

D. 4.Sea cucumber

Answer: D



Watch Video Solution

239. Find the odd example

A. Sea fan

B. Sea lily

C. sea urchin

D. sea cucumber

Answer: A



Watch Video Solution

240. The radial symmetry is observed in

I. Platyhelminthes

II. Coelenterates

III . Aschelminthes

IV. Annelids

v) Echinoderms

The correct statements are

- A. ii and v only
- B. I,ii,iii and v only
- C. ii, iii and I only
- D. I, iii and v only

Answer: a



Watch Video Solution

241. In which of the following phyla, the adult shows radial symmetry while the larva has bilateral symmetry?

A. Annelids

B. Arthropods

C. Molluscs

D. Echinoderms

Answer: D



Watch Video Solution

242. Who had given the hemichordata the status of an independent invertebrate phylum?

- A. Vander horst
- B. Dawydoff, Marcus
- C. Hyman
- D. All of these

Answer: D



Watch Video Solution

243. Body of Balanoglossus is divisible into

A. head, neck, thorax and abdomen

B. head, trunk and tail

C. proboscis, collar and tail

D. proboscis, collar and trunk.

Answer: D



Watch Video Solution

244. In Balanoglossus, the mouth is present

- A. at the tip of proboscis
- B. in between the proboscis and collar
- C. in the collar
- D. in the trunk

Answer: B



Watch Video Solution

245. Stomochord is a hollow outgrowth which arises from the roof of the buccal cavity. It is present in

- A. Chordata
- B. Cephalochordata
- C. Urochordata
- D. Hemichordata.

Answer: D



Watch Video Solution

246. Hemichordates have pharyngeal gill slits

which are

1. lateral in position
2. dorsal in position
3. ventral in position
4. none of the above

A. lateral in position

B. dorsal in position

C. ventral in position

D. none of the above

Answer: B



Watch Video Solution

247. Epidermis of *Balanoglossus* consists of

1. a single layer of cells
2. many layers of cells
3. two layers of cells
4. three layers of cells.

A. a single layer of cells

B. many layers of cells

C. two layers of cells

D. three layers of cells.

Answer: A



Watch Video Solution

248. Balanoglossus has

1. red blood
2. yellow blood
3. blue blood
4. colourless blood

A. red blood

B. yellow blood

C. blue blood

D. colourless blood

Answer: D



Watch Video Solution

249. Excretory organ of Balanoglossus is

A. kidney

B. body wall

C. glomerulus

D. gill

Answer: C



Watch Video Solution

250. Respiratory pigment in Balanoglossus is

A. haemocyanin

B. haemoglobin

C. chlorocruorin

D. none of these

Answer: D



Watch Video Solution

251. Tornaria, the larva of Balanoglossus which resembles with bipinnaria larva was first described by

A. J.Muller

B. Weismann

C. Hugo de Vries

D. Singer

Answer: A



Watch Video Solution

252. Hemichordates resembles annelids in

A. body form and burrowing habit

B. circulatory system

C. larval form

D. body form, burrowing habit, circulatory system and occurrence of a free swimming larva

Answer: D



Watch Video Solution

253. Echinoderms, hemichordates and chordates have a

A. different ancestral stock

B. common ancestral stock

C. similar nervous system

D. common external characters.

Answer: B



Watch Video Solution

254. Blood vascular system in hemichordata is

1. open

2. reduced

3. closed

4. absent

A. open

B. reduced

C. closed

D. absent

Answer: A



Watch Video Solution

255. Balanoglossus possesses

1. Dorsal nerve cord
2. Ventral nerve cord
3. Both 1) and 2)
4. Spinal cord

- A. Dorsal nerve cord
- B. Ventral nerve cord
- C. Both 1) and 2)
- D. Spinal cord

Answer: C



Watch Video Solution

256. Respiration occurs in Balanoglossus by

1. gill slits

2. general body surface

3. book gills

4. 1) and 2)

A. gill slits

B. general body surface

C. book gills

D. 1) and 2)

Answer: D



Watch Video Solution

257. Asexual reproduction occurs in Hemichordata by

A. 1.Fragmentation

B. 2.budding

C. 3.fission

D. 4.All the above

Answer: D



Watch Video Solution

258. Proboscis gland in Balanoglossus is associated with

A. digestion

B. respiration

C. circulation

D. excretion

Answer: D



Watch Video Solution

259. Connecting link between chordates and non-chordates is

A. 1.Feripatus

B. 2.Balanoglossus

C. 3.Sphenodon

D. 4.Tachyglossus

Answer: B



Watch Video Solution

260. Which of the following animals belongs to phylum Coelenterata?

A. Sea horse

B. Sea hare

C. Sea pen

D. Sea cucumber

Answer: C



Watch Video Solution

261. Which of the following is not correctly matched?

A. Sycon-Canal system

B. Starfish -Radial Symmetry

C. Ascaris - Flame cell

D. Prawn -Haemocol

Answer: C



Watch Video Solution

262. Which of the following statements are incorrec?

(i) Parapodia are lateral appendages in arthropods used for swimming.

(ii) Radula in molluscs are structures involved in excretion.

(iii) Aschelminthes are dioecious.

(iv) Echinoderm adults show radial symmetry.

(v) Ctenophorans are diploblastic

A. I and II

B. I and III

C. I, IV and V

D. III and V

Answer: A



Watch Video Solution

263. Which of the following are invertebrates

1. Insects

2. Birds

3. Angiosperms

4. Fungi

A. Insects

B. Birds

C. Angiosperms

D. Fungi

Answer: A



264. Which of the following are most intelligent invertebrates.

1. Crustaceans such as cray fish and hermit crab

2. Arachnidians like scorpions and spiders

3. Cephalopods such as squids and octopus

4. Echinoderms like starfish and sea urchin

A. Crustaceans such as cray fish and hermit crab

B. Arachnidians like scorpions and spiders

C. Cephalopods such as squids and octopus

D. Echinoderms like starfish and sea urchin

Answer: C



Watch Video Solution

265. "Royal jelly" is secreted by worker Honeybees. Name the gland which secretes "royal jelly".

A. *Apis dorsata*

B. *Apis indica*

C. *Apis florea*

D. *Apis mellifera*

Answer: D



Watch Video Solution

266. Munga silk worm feeds on

A. Shorea

B. Terminalia

C. Machilus

D. Morus

Answer: C



Watch Video Solution

267. Which one of the following is a correct match

A. Filariasis- *Taenia solium*

B. Encephalitis - *Culex vishnui*

C. Malaria - *Phlebotomus* sp.

D. kala-azar - *Anopheles stephensi*

Answer: B



Watch Video Solution

268. Which one of the following genus of insects prefer to breed in clean water and their larvae lie parallel to the surface of water

A. Anopheles

B. Culex

C. Aedes

D. Phlebotomus

Answer: A



Watch Video Solution

269. Which one of the following animal possesses gaint chromosome?

A. Drosophila

B. Mouse

C. Branchiomyces

D. Xenopsylia

Answer: A



Watch Video Solution

270. In Prawn, excretion is carried out by

A. Protonephridia

B. Malpighian tubules

C. Mushroom gland

D. Green gland

Answer: D



Watch Video Solution

271. An example of animals in which mesoderm occurs as scattered pouches between ectoderm and endoderm is

A. Filaria worm

B. Tapeworm

C. Earthworm

D. Lancelet

Answer: A



Watch Video Solution

272. Which is the only phylum in the animal kingdom without any nerve cell ?

A. Porifera

B. Coelenterata

C. Annelida

D. Nematoda

Answer: A



Watch Video Solution

273. In most simple type of canal system of porifera, water flows through which one of the following ways

A. Ostia → Spongocoel → Osculum →

Exterior

B. Spongocoel → Ostia → Osculum →

Exterior

C. Osculum → Spongocoel → Ostia →

Exterior

D. Osculum → Ostia → Spongocoel →

Exterior

Answer: C



Watch Video Solution

274. Which of the following is concerned with asexual reproduction?

A. Gemmules

B. Gametes

C. Gonads

D. Genitalia

Answer: A



Watch Video Solution

275. Which group of animals belong to the same phylum ?

A. Prawn, Scorpion, Locusta

B. Sponge, Sea anemone, Starfish

C. Malaria parasite, Amoeba, Mosquito

D. Earthworm, Pinworm, Tapeworm

Answer: D



Watch Video Solution

276. Which of the following is correctly matched with respect to their taxonomic classification?

A. House fly, butterfly, tsetsefly, silverfish-

Insecta

B. Spiny anteater, sea urchin, sea

cucumber-Echinodermata

C. Flying fish, cuttlefish, silverfish-Pisces

D. Centipede, millipede, spider, scorpion-

Insecta

Answer: A



Watch Video Solution

277. Which of the following are correctly matched with respect to their taxonomic classification?

A. House fly, butterfly, tsetsefly, silverfish-

Insecta

B. Spiny anteater, sea urchin, sea

cucumber-Echinodermata

C. Flying fish, cuttlefish, silverfish-Pisces

D. Centipede, millipede, spider, scorpion-

Insecta

Answer: A



Watch Video Solution

278. Which of the following characteristics is mainly responsible for diversification of insects of land

A. Bialteral symmetry

B. Exoskeleton

C. Eyes

D. Segmentation

Answer: B



Watch Video Solution

279. Body having meshwork of cell, internal cavities lined with food filtering flagellated

cells and indirect development are the characteristics of phylum

A. Coelenterata

B. Porifera

C. Mollusca

D. Protozoa

Answer: B



Watch Video Solution

280. Which of the following features is not present in the in the phylum arthropoda

A. Metmeric -Segmentation

B. Parapodia

C. Jointed Appendages

D. Chitinous exoskeleton

Answer: B



Watch Video Solution

281. In case of poriferans, the spongocoel is lined with flagellated cells called

A. ostia

B. oscula

C. choanocytes

D. mesencymal cells

Answer: C



Watch Video Solution

282. An important characteristic that hemichordates share with chordates is

- A. absence of notochord
- B. ventral tubular nerve cord
- C. pharynx with gill slits
- D. pharynx without gill slits

Answer: C



Watch Video Solution

283. Which of the following animals does not undergo metamorphosis

A. Starfish

B. Moth

C. Tunicate

D. Earthworm

Answer: D



Watch Video Solution

Assertion And Reason

1. [A] : The signet ring trophozoite of malarial parasite ingests major part of cytoplasm of erythrocytes and form a food vacuole into which it secretes digestive enzymes .

[R] : The enzymes cause breakdown of Haemoglobin into hematic and protein contents .

A. If both A and R are true and R is the correct explanation of A

B. If both A and R are true but R is not the correct explanation of A

C. If A is true and R is false

D. If both A and R are false

Answer: D



Watch Video Solution

2. [A] : Protozoans have no physiological division of labour .

[R] : They have a well developed cell , tissue and tissue organ system .

A. If both A and R are true and R is the correct explanation of A

B. If both A and R are true but R is not the correct explanation of A

C. If A is true and R is false

D. If both A and R are false

Answer: D



Watch Video Solution

3. [A] : Endomixis in Paramecium involves total internal nuclear reorganisation within a single individual .

[R] : It takes place in the absence of conjugation.

A. If both A and R are true and R is the correct explanation of A

B. If both A and R are true but R is not the correct explanation of A

C. If A is true and R is false

D. If both A and R are false

Answer: A



Watch Video Solution

4. [A] : Sponges are primitive multicellular animals that probably evolved a multicellular structure independently of other animals .

[R] : Sponges are stationary animals and

remain fixed to substratum while water passes over them .

A. If both A and R are true and R is the correct explanation of A

B. If both A and R are true but R is not the correct explanation of A

C. If A is true and R is false

D. If both A and R are false

Answer: B



Watch Video Solution

5. [A] : Annelids , Arthropods and mollusks are protostomial coelomates .

[R] : They all show bilateral symmetry , tube with in tube body plan and three germ layer derivations.

A. If both A and R are true and R is the correct explanation of A

B. If both A and R are true but R is not the correct explanation of A

C. If A is true and R is false

D. If both A and R are false

Answer: B



Watch Video Solution

6. [A] : The body cavity of earthworm is a true coelem .

[R] : It is lined by peritoneum derived from ectoderm .

A. 1) If both A and R are true and R is the correct explanation of A

B. 2) If both A and R are true but R is not the correct explanation of A

C. 3) If A is true and R is false

D. 4) If both A and R are false

Answer:



Watch Video Solution

7. [A] : Pearl is formed when a foreign particle gets in between shell and mantle .

[R] : The inner nacreous layer called mother of pearl is formed by layers of $CaCO_3$ and concholin.

A. 1) If both A and R are true and R is the correct explanation of A

B. 2) If both A and R are true but R is not the correct explanation of A

C. 3) If A is true and R is false

D. 4) If both A and R are false

Answer:



Watch Video Solution

8. [A] : Fasciola is hermaphrodite .

[R] : Gonads are well developed and the male and female genital ducts open into a common genital atrium .

A. If both A and R are true and R is the correct explanation of A

B. If both A and R are true but R is not the correct explanation of A

C. If A is true and R is false

D. If both A and R are false

Answer:



Watch Video Solution

9. [A] : There are 10 tidemanns bodies in ambulacral system of echinoderms .

[R] : They are enzyme destroying bodies and act as lymphatic glands .

A. If both A and R are true and R is the correct explanation of A

B. If both A and R are true but R is not the correct explanation of A

C. If A is true and R is false

D. If both A and R are false

Answer:



Watch Video Solution

10. [A] : Termites and ants are social insects .

[R] : They make fungus gardens in their nests .

A. If both A and R are true and R is the correct explanation of A

B. If both A and R are true but R is not the correct explanation of A

C. If A is true and R is false

D. If both A and R are false

Answer:



Watch Video Solution

11. Assertion(A): In sponges, archaeocytes are totipotent.

Reason(R): They give rise to all types of amoebocytes and are self replicating.

- A. If both A and R are true and R is the correct explanation of A
- B. If both A and R are true but R is not the correct explanation of A
- C. If A is true and R is false
- D. If both A and R are false

Answer:



Watch Video Solution

12. [A] : The honey is a vital food for animals including man .

[R] : The enzyme in saliva of honey bees converts complex sugar of nector of flowers into simple sugar of honey .

A. If both A and R are true and R is the correct explanation of A

B. If both A and R are true but R is not the correct explanation of A

C. If A is true and R is false

D. If both A and R are false

Answer:



Watch Video Solution

13. [A] : Leeches secrete Hirudin from their salivary glands .

[R] : Hirudin is anticoagulating agent .

A. If both A and R are true and R is the correct explanation of A

B. If both A and R are true but R is not the correct explanation of A

C. If A is true and R is false

D. If both A and R are false

Answer:



Watch Video Solution

14. [A] : All invertebrates can keep their body temperature constant all the time .

[R] : Amoeba can also keep its body

temperature constant as it has well-defined blood vascular system .

A. If both A and R are true and R is the correct explanation of A

B. If both A and R are true but R is not the correct explanation of A

C. If A is true and R is false

D. If both A and R are false

Answer:



Watch Video Solution

15. [A] : In *Taenia solium* , bladder worm is also known as cysticercus .

[R] : Bladder worm is characterised by a large vesicle and one scolex .

A. If both A and R are true and R is the correct explanation of A

B. If both A and R are true but R is not the correct explanation of A

C. If A is true and R is false

D. If both A and R are false

Answer:



Watch Video Solution

16. [A] : Earthworm obtain oxygen for respiration through moist skin . They do not have respiratory organs .

[R] : They are burrowing in habit .

- A. If both A and R are true and R is the correct explanation of A
- B. If both A and R are true but R is not the correct explanation of A
- C. If A is true and R is false
- D. If both A and R are false

Answer:



Watch Video Solution

17. [A] : Presence of alimentary canal would not have suited the mode of life of tapeworm .

[R] : It would have rendered impossible the process

A. If both A and R are true and R is the correct explanation of A

B. If both A and R are true but R is not the correct explanation of A

C. If A is true and R is false

D. If both A and R are false

Answer:



Watch Video Solution

18. [A]: Development in cockroach is termed as retrogressive metamorphosis .

[R] : The young ones resemble adults in all essential respects .

A. If both A and R are true and R is the correct explanation of A

B. If both A and R are true but R is not the correct explanation of A

C. If A is true and R is false

D. If both A and R are false

Answer:



Watch Video Solution

19. [A] : All the gills of Palaemon are phyllobranchs .

[R] : Each gill consists of two rows of leaf like

rhomboidal gill-plates arranged like the leaves of a book .

A. If both A and R are true and R is the correct explanation of A

B. If both A and R are true but R is not the correct explanation of A

C. If A is true and R is false

D. If both A and R are false

Answer:



Watch Video Solution

20. [A] : Renal-sac of Prawn functions in same manner as vertebrate kidney .

[R] : Renal-sac is large , thin-walled sac lying above the cardiac stomach .

A. If both A and R are true and R is the correct explanation of A

B. If both A and R are true but R is not the correct explanation of A

C. If A is true and R is false

D. If both A and R are false

Answer:



Watch Video Solution

21. [A] : Pila is adopted to lead an amphibious life .

[R] : It is provided with a pulmonary sac for aerial respiration and a gill or ctenidium for aquatic respiration .

A. If both A and R are true and R is the correct explanation of A

B. If both A and R are true but R is not the correct explanation of A

C. If A is true and R is false

D. If both A and R are false

Answer:



Watch Video Solution

22. [A] : Chordates have poor regeneration power while non-chordates have good regeneration power .

[R] : Non-chordates have asexual reproduction , so they have good regeneration power .

A. If both A and R are true and R is the correct explanation of A

B. If both A and R are true but R is not the correct explanation of A

C. If A is true and R is false

D. If both A and R are false

Answer:



Watch Video Solution

23. [A] : In lower invertebrates the digestion is intracellular while in higher forms it is extracellular .

[R] : Extracellular digestion is highly evolved process , it takes place in gut .

- A. If both A and R are true and R is the correct explanation of A
- B. If both A and R are true but R is not the correct explanation of A
- C. If A is true and R is false
- D. If both A and R are false

Answer:



Watch Video Solution

24. [A] : Chordates have an oxygen carrying pigment called haemoglobin . It is always present in red blood corpuscles .

[R] : Non-chordates have either no haemoglobin or if it is present , it is present in plasma . Non-chordates require very little oxygen as compared to chordates for their body functions.

A. If both A and R are true and R is the correct explanation of A

B. If both A and R are true but R is not the correct explanation of A

C. If A is true and R is false

D. If both A and R are false

Answer:



Watch Video Solution

25. [A] : Huxley comments that Birds are glorified reptiles .

[R] : Birds possess higher grades of intelligence and behaviour practically unknown in reptiles .

A. If both A and R are true and R is the correct explanation of A

B. If both A and R are true but R is not the correct explanation of A

C. If A is true and R is false

D. If both A and R are false

Answer:



Watch Video Solution

26. [A] : Birds excrete uric acid .

[R] : Birds do not have a urinary bladder .

A. If both A and R are true and R is the correct explanation of A

B. If both A and R are true but R is not the correct explanation of A

C. If A is true and R is false

D. If both A and R are false

Answer:



Watch Video Solution

27. [A] : In elastic lungs of birds are supplemented by remarkable system of air sacs .

[R] : Air sacs function in storage of food .

A. If both A and R are true and R is the correct explanation of A

B. If both A and R are true but R is not the correct explanation of A

C. If A is true and R is false

D. If both A and R are false

Answer:



Watch Video Solution

28. [A] : Sphenodon is referred to as a living fossil .

[R] : It has retained many primitive

characteristics of fossil or stem reptiles belonging to permain period.

A. If both A and R are true and R is the correct explanation of A

B. If both A and R are true but R is not the correct explanation of A

C. If A is true and R is false

D. If both A and R are false

Answer:



Watch Video Solution

29. [A] : In reptiles , lizards show autotomy .

[R] : Tail of most lizards is easily broken off when threatened or seized by a predator .

A. If both A and R are true and R is the correct explanation of A

B. If both A and R are true but R is not the correct explanation of A

C. If A is true and R is false

D. If both A and R are false

Answer:



Watch Video Solution

30. [A] : Heloderma is called beaded lizard .

[R] : Its scales resemble beads .

A. If both A and R are true and R is the correct explanation of A

B. If both A and R are true but R is not the correct explanation of A

C. If A is true and R is false

D. If both A and R are false

Answer:



Watch Video Solution

31. Assertion: Krait is poisonous snakes.

Reason: Belly scales are small and continuous with dorsal in poisonous snakes.

A. 1) If both A and R are true and R is the correct explanation of A

B. 2) If both A and R are true but R is not the correct explanation of A

C. 3) If A is true and R is false

D. 4) If both A and R are false

Answer:



Watch Video Solution

32. [A] : In the adult bird , only the left ovary is well developed .

[R] : A single ovary results in loss of weight as well as in decreasing the number of eggs produced .

A. If both A and R are true and R is the correct explanation of A

B. If both A and R are true but R is not the correct explanation of A

C. If A is true and R is false

D. If both A and R are false

Answer:



Watch Video Solution

33. [A] : Rabbit is classified as mammal .

[R] : Rabbit possesses mammary glands ,
pectan and teeth .

A. If both A and R are true and R is the
correct explanation of A

B. If both A and R are true but R is not the correct explanation of A

C. If A is true and R is false

D. If both A and R are false

Answer:



Watch Video Solution

34. [A] : Origin of mammals is polyphyletic .

[R] : Mammals are derived from atleast two

triassic reptilian stocks , Cynodonts and lepidosaurs.

A. If both A and R are true and R is the correct explanation of A

B. If both A and R are true but R is not the correct explanation of A

C. If A is true and R is false

D. If both A and R are false

Answer:



Watch Video Solution

35. [A] : The Ascidian tadpole larva possess all the basic chordate characters.

[R] : Both urochordates and other chordates have originated from a common ancestor .

A. If both A and R are true and R is the correct explanation of A

B. If both A and R are true but R is not the correct explanation of A

C. If A is true and R is false

D. If both A and R are false

Answer:



Watch Video Solution

36. [A] : Tail wagging dance is performed for short distances . It conveys both the distance and speed of the scout bees .

[R] : Foraging bees keep touching the scout bees through dance to get the information mainly by olfactory stimulation .

A. If both A and R are true and R is the correct explanation of A

B. If both A and R are true but R is not the correct explanation of A

C. If A is true and R is false

D. If both A and R are false

Answer:



Watch Video Solution

37. [A] : A pair of coxal glands are found in each side of metasoma of scorpion .

[R] : The coxal glands of scorpion are analogous with the green glands of crustacea and function as excretory organs .

A. If both A and R are true and R is the correct explanation of A

B. If both A and R are true but R is not the correct explanation of A

C. If A is true and R is false

D. If both A and R are false

Answer:



Watch Video Solution

38. [A] : Honey bees are social insects known for producing honey and bees wax , and for living in very highly organized colonies . These colonies have hexagonal chambers called cells made up of bees wax .

[R] : Cells are used for storing honey and

pollen breeds , as well as for rearing the brood.

A. If both A and R are true and R is the correct explanation of A

B. If both A and R are true but R is not the correct explanation of A

C. If A is true and R is false

D. If both A and R are false

Answer:



Watch Video Solution

39. Assertion : Cold blooded animals do not have fat layer.

Reason : Cold blooded animals use their fat for metabolic process during hibernation

A. If both A and R are true and R is the correct explanation of A

B. If both A and R are true but R is not the correct explanation of A

C. If A is true and R is false

D. If both A and R are false

Answer:



Watch Video Solution

40. [A] : Neoteny is the retention of larval form throughout the life .

[R] : It occurs in Axoltol larva of Ambystoma .

A. If both A and R are true and R is the correct explanation of A

B. If both A and R are true but R is not the correct explanation of A

C. If A is true and R is false

D. If both A and R are false

Answer:



Watch Video Solution

41. [A] : In Parthenogenesis , fertilized egg is stimulated to divide .

[R] : It is a type of reproduction through which

animals are not able to eliminate non adaptive characters and sterility.

A. If both A and R are true and R is the correct explanation of A

B. If both A and R are true but R is not the correct explanation of A

C. If A is true and R is false

D. If both A and R are false

Answer:



Watch Video Solution

42. [A] : Protozoans have no physiological division of labour .

[R] : They have a well developed cell , tissue and tissue organ system .

A. If both A and R are true and R is the correct explanation of A

B. If both A and R are true but R is not the correct explanation of A

C. If A is true and R is false

D. If both A and R are false

Answer:



Watch Video Solution

43. [A] : Visceral leishmaniasis is caused by the sand flies .

[R] : When the sand flies bite , secondary infection occurs .

- A. If both A and R are true and R is the correct explanation of A
- B. If both A and R are true but R is not the correct explanation of A
- C. If A is true and R is false
- D. If both A and R are false

Answer:



Watch Video Solution

44. [A] : Many desert mammals cool the exhaled air in their noses , before it is expelled out through nostrills .

[R] : The moisture condensation in the nose and is not lost as water vapours along with the exhaled air .

A. If both A and R are true and R is the correct explanation of A

B. If both A and R are true but R is not the correct explanation of A

C. If A is true and R is false

D. If both A and R are false

Answer:



Watch Video Solution

45. [A] : Amoeba is regarded as the lowest form of animals.

[R] : Body of amoeba consists of a mere mass of protoplasm and resembles a blob of jelly

A. 1) If both A and R are true and R is the correct explanation of A

B. 2) If both A and R are true but R is not the correct explanation of A

C. 3) If A is true and R is false

D. 4) If both A and R are false

Answer:



Watch Video Solution

46. [A] : In *Taenia solium* , bladder worm is also known as cysticercus .

[R] : Bladder worm is characterised by a large vesicle and one scolex .

A. If both A and R are true and R is the correct explanation of A

B. If both A and R are true but R is not the correct explanation of A

C. If A is true and R is false

D. If both A and R are false

Answer:



Watch Video Solution

47. Assertion : Bats and whales are classified as mammals

Reason : Bats and whales have four-chambered heart

A. If both A and R are true and R is the correct explanation of A

B. If both A and R are true but R is not the correct explanation of A

C. If A is true and R is false

D. If both A and R are false

Answer:



Watch Video Solution

48. [A] : The coelomic cavity of Leech is mostly filled with botryoidal tissue formed of branching tubular cells .

[R] : Hence the coelomic cavity is reduced to four longitudinal channels and their branches

.

A. If both A and R are true and R is the correct explanation of A

B. If both A and R are true but R is not the correct explanation of A

C. If A is true and R is false

D. If both A and R are false

Answer:





Watch Video Solution

49. [A] : Pearl is formed when a foreign particle gets in between shell and mantle .

[R] : The inner nacreous layer called mother of pearl is formed by layers of $CaCO_3$ and concholin.

A. If both A and R are true and R is the correct explanation of A

B. If both A and R are true but R is not the correct explanation of A

C. If A is true and R is false

D. If both A and R are false

Answer:



Watch Video Solution

50. [A] : Tail wagging dance is performed for short distances . It conveys both the distance and speed of the scout bees .

[R] : Foraging bees keep touching the scout bees through dance to get the information mainly by olfactory stimulation .

A. If both A and R are true and R is the correct explanation of A

B. If both A and R are true but R is not the correct explanation of A

C. If A is true and R is false

D. If both A and R are false

Answer:





Watch Video Solution

51. Assertion: The duck-billed platypus and the spiny anteater, both are egg-laying animals yet they are grouped under mammals.

Reason: Both of them have seven cervical vertebrae and 12 pairs of cranial nerves.

A. 1) If both A and R are true and R is the correct explanation of A

B. 2) If both A and R are true but R is not the correct explanation of A

C. 3) If A is true and R is false

D. 4) If both A and R are false

Answer:



Watch Video Solution