



BIOLOGY

BOOKS - TRUEMAN BIOLOGY

NEET - 2013 (HUMAN SYSTEMS)

Mcqs

1. Figure shows schematic plan of blood circulation in humans with labels A to D,

B. D- dorsal aorta -takes blood from heart
to body parts, $PO_2 = 95$ mm Hg

C. A - Pulmonary vein - takes impure blood
from body parts, $PO_2 = 60$ mm Hg

D. 8 - Pulmonary artery - takes blood from
heart to lungs, $PO_2 = 90$ mm Hg

Answer: 1



Watch Video Solution

2. Which of the following statements is correct in relation to the endocrine system.

A. Non-nutrient chemicals produced by the body in trace amount that act as intercellular messenger are known as hormones.

B. Releasing and inhibitory hormones are produced by the pituitary gland.

C. Adenohypophysis is under direct neural regulation of the hypothalamus.

D. Organs in the body like gastrointestinal tract, heart, kidney and liver do not produce any hormone

Answer: 1



Watch Video Solution

3. What is the correct sequence of sperm formation?

A. Spermatogonia, spermatozoa, sper-

matocyte, spermatid

B. Spermatogonia, spermatocyte, sper-

matid, spermatozoa

C. Spermatid, spermatocyte, sper-

matogonia. spermatozoa

D. Spermatogonia, spermatocyte, spermatozoa, spermatid

Answer: 2



Watch Video Solution

4. Artificial insemination means

A. artificial introduction of sperms of a healthy donor into the vagina

- B. introduction of sperms of a healthy donor directly into the ovary
- C. transfer of sperms of a healthy donor to a test tube containing ova
- D. transfer of sperms of husband to a test tube containing ova

Answer: 1



Watch Video Solution

5. Which one of the following is not the function of placenta? It

- A. Facilitates removal of carbon dioxide and waste material from embryo.
- B. Secretes oxytocin during parturition.
- C. Facilitates supply of oxygen and nutrients to embryo.
- D. Secretes estrogen

Answer: 2



6. Select the correct statement with respect to locomotion in humans

A. 1)The vertebral column has 10 thoracic vertebrae

B. 2)The joint between adjacent vertebrae is a fibrous joint

C. 3)A decreased level of progesterone causes osteoporosis in old people.

D. 4) Accumulation of uric acid crystals in joints causes their inflammation.

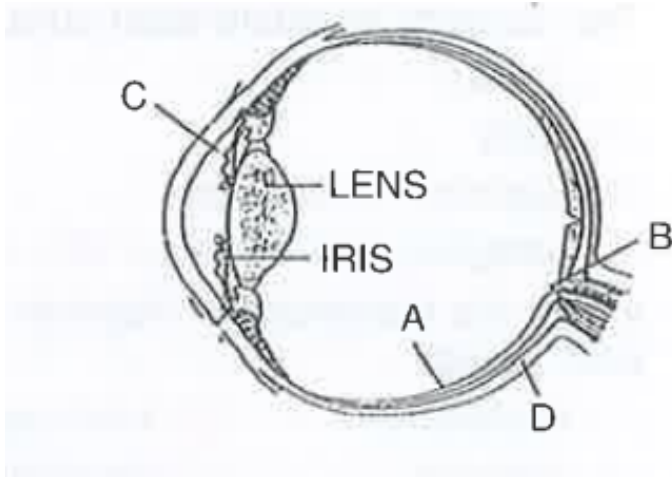
Answer: 4



Watch Video Solution

7. Parts A, B, C and D of the human eye are shown in the diagram. Select the option which gives correct identification along with its

functions/ characteristics



A. C - Aqueous chamber -reflects the light which does not pass through the lens.

B. D - Choroid - its anterior part forms ciliary body

C. A - Retina - contains photo receptors - rods and cones

D. B- Blind spot - has only a few rods and cones

Answer: 3



Watch Video Solution

8. Which of the following cannot be detected in a developing foetus by amniocentesis?

A. Down syndrome

B. Jaundice

C. Klinefelter syndrome

D. Sex of the foetus

Answer: 2



Watch Video Solution

9. The most abundant intracellular cation is

A. H^+

B. K^+

C. Na^+

D. Ca^+

Answer: 2



Watch Video Solution

10. If two persons with 'AB' blood group marry and have sufficiently large number of children, these children could be classified as 'A' blood group: 'AB' blood group 'B' blood group in 1:2:1

ratio. Modern technique of protein electrophoresis reveals presence of both 'A' and 'B' type proteins in 'AB' blood group individuals. This is an example of

- A. Partial dominance
- B. Complete dominance
- C. Codominance
- D. Incomplete dominance

Answer: 3



Watch Video Solution

11. One of the legal methods of birth control is

A. by having coitus at the time of day break

B. by a premature ejaculation during coitus

C. abortion by taking an appropriate
medicine

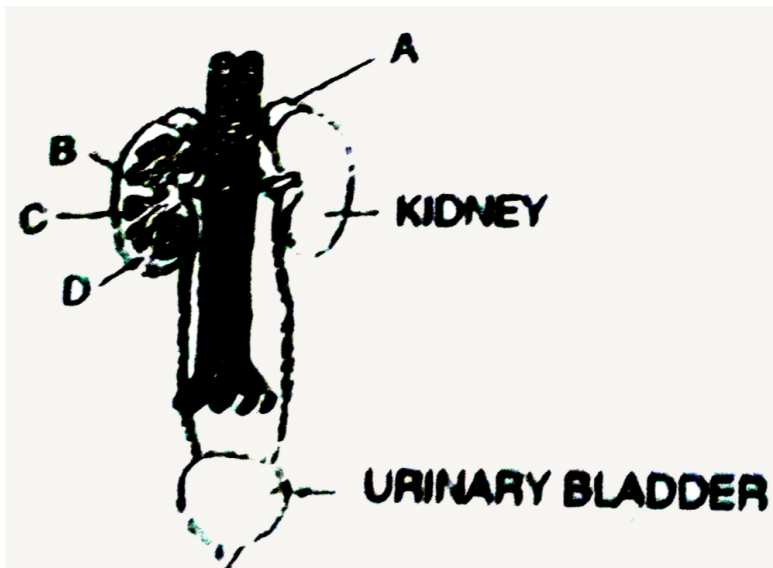
D. by abstaining from coitus from day 10 to
17 of the menstrual cycle

Answer: 4



Watch Video Solution

12. Figure shows human urinary system with structures labelled A to D. Select option which correctly identifies them and gives their characteristics and/or functions



A. C- Medulla - inner zone of kidney and contains complete nephrons

B. D-Cortex-outer part of kidney and do not contain any part of nephrons.

C. A - Adrenal gland -located at the anterior part of kidney. Secrete Cat- echolamines which stimulate glyco- gen breakdown

D. B-Pelvis-broad funnel shaped space inner to hilum, directly connected to loops of Henle.

Answer: 3



Watch Video Solution

13. The H-zone in the skeletal muscle fibre is due to

A. The central gap between actin filaments extending through myosin filaments in the A-band

B. Extension of myosin filaments in the central portion of the A-band.

C. The absence of myofibrils in the central portion of A-band

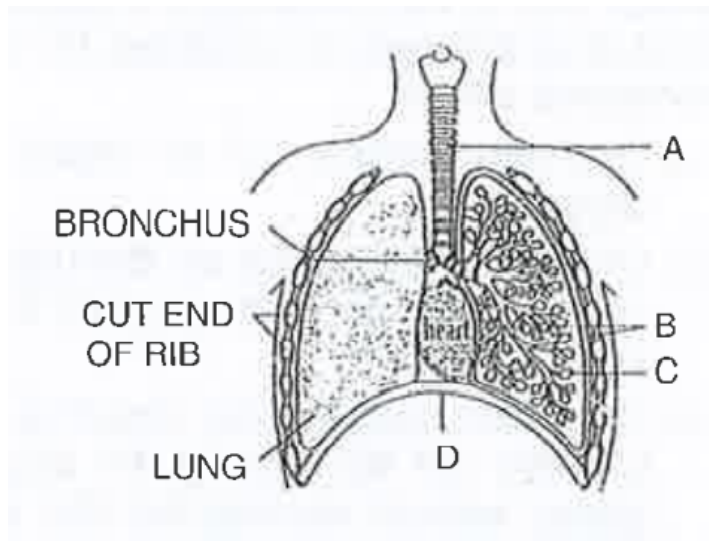
D. The central gap between myosin filaments in the A-band.

Answer: 1



Watch Video Solution

14. The figure shows a diagrammatic view of human respiratory system with labels A,B,C and D select the option which gives correct identification and main function and / or characteristic



A. C-Alveoli - thin walled vascular bag like structures for exchange of gas- es.

B. D - Lower end of lungs-diaphragm pulls it down during inspiration

C. A- trachea -long tube supported by complete cartilaginous rings for conducting inspired air.

D. B-pleural membrane -surround ribs on both sides to provide cushion against rubbing.

Answer: 1



Watch Video Solution

15. The characteristics and an example of a synovial joint in humans is

Characteristics	Examples
(1) fluid filled synovial cavity between two bones	joint between atlas and axis
(2) lymph filled between two bones, limited movement	gliding joint between carpals
(3) fluid cartilage between two bones, limited movements	Knee joint
(4) fluid filled between two joints, provides cushion	Skull bones



[Watch Video Solution](#)

16. Select the answer which correctly matches the endocrine gland with the hormone it

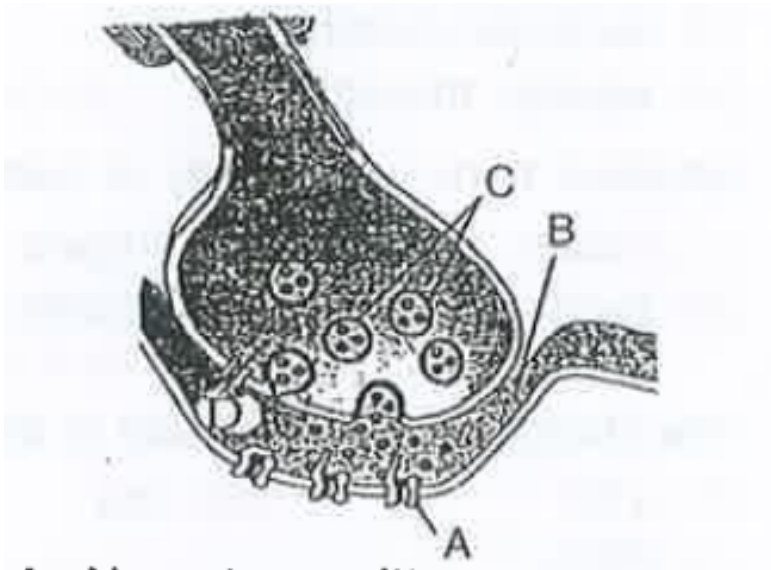
secreted and its function/ deficiency symptom

Endocrine gland	Hormone	Function/ deficiency symptoms
(1) Thyroid gland	Thyroxine	Lack of iodine in diet results in goitre
(2) Corpus luteum	Testosterone	Stimulates spermatogenesis
(3) Anterior pituitary	Oxytocin	Stimulate uterus contraction during child birth
(4) Posterior pituitary	Growth Hormone (GH)	Oversecretion stimulates abnormal growth



Watch Video Solution

17. A diagram showing axon terminal and synapses is given. Identify correctly at least two of A-D.



A. A- Neurotransmitter , B-Synaptic cleft

B. C-Neurotransmitter, D- Ca^{++}

C. A - Receptor , C-Synaptic vesicles

D. B-Synaptic connection , $D-K^+$

Answer: 3



Watch Video Solution

18. Product of sexual reproduction generally generates

A. New genetic combination leading to variation

B. Large biomass

C. Longer viability of seeds

D. Prolonged dormancy

Answer: 1



Watch Video Solution

19. Menstrual flow occurs due to lack of

A. Oxytocin

B. Vasopressin

C. Progesterone

D. FSH

Answer: 3



Watch Video Solution

20. The diagram given here is the standard ECG of a normal person. The P-wave represents the



A. Beginning of the systole

B. End of systole

C. Contraction of both the atria

D. Initiation of the ventricular contraction

Answer: 3



Watch Video Solution