



# BIOLOGY

## BOOKS - TRUEMAN BIOLOGY

### Animal Kingdom

Mcq

1. Sponges are not found in

A. cold water

B. brackish water

C. sea water

D. sandy water

**Answer: A**



**Watch Video Solution**

2. Characteristic feature of sponge is the occurrence of

A. one exit and many mouths

B. canal system

C. choanocytes

D. all of the above

**Answer: D**



**Watch Video Solution**

**3. In sponges digestion takes place in**

A. paragastric cavity

B. stomach

C. osculum

D. food vacuole

**Answer: D**



**Watch Video Solution**

**4. Water current through the body of spongs**  
is maintained by

A. amoebocytes

B. porocytes



C. choanocytes

D. pinacocytes

**Answer: C**



**Watch Video Solution**

**5. Classification of Phylum Porifera is based on**

A. canal system

B. spicules

C. shape of choanocytes

D. myocytes

**Answer: B**



**Watch Video Solution**

6. Sponges have division of labour, which cells are found in gemmules for asexual reproduction?

A. Choanocytes

B. mesoderm

C. choanoderm

D. none of these

**Answer: B**



**Watch Video Solution**

7. Epidermis of a sponge is called

A. pinacoderm

B. mesoderm

C. choanoderm

D. none of these

**Answer: A**



**Watch Video Solution**

**8. Endoskeleton of sponge is called**

A. pinacoderm

B. mesoderm

C. Spicules and spongin fibres

D. none of these

**Answer: C**



**Watch Video Solution**

**9. Ostium and osculum are surrounded by**

A. choanocytes

B. myocytes

C. pinacocytes

D. spicules

**Answer: B**



[Watch Video Solution](#)

**10.** The larva of Sycon is

A. parenchymula

B. amphiblastula

C. redia

D. planula

**Answer: B**



[Watch Video Solution](#)

11. Rhagon type of larva is found in

A. Leucosolenia

B. Sycon

C. Spongilla

D. all sponges

**Answer: C**



**Watch Video Solution**

12. The phenomenon of regeneration in sponges was observed and explained by

A. John Ellis

B. Aristotle

C. H.W. Wilson

D. Robert E. Grant

**Answer: C**



**Watch Video Solution**



**13. Assertion(A):** In sponges, archaeocytes are totipotent.

**Reason( R):** They give rise to all types of amoebocytes and are self replicating.

A. Both A) and B) are true and the R) is the correct explanation of A)

B. Both A) and R) are true and the R) is not the correct explanation of A)

C. A) is true statement but R) is false

D. Both A) and R) are false

**Answer: A**



**Watch Video Solution**

**14.** A distinguishing feature of cnidarians is the presence of

- A. flame cells
- B. nephridiopores
- C. statocysts
- D. cnidoblasts

**Answer: D**



**Watch Video Solution**

**15. Nutritionally Hydra is**

- A. saprozoic
- B. herbivorous
- C. insectivorous
- D. carnivorous

**Answer: D**



[Watch Video Solution](#)

16. Hydra can digest all types of food except

A. proteins

B. fats

C. starch

D. sugars

**Answer: C**



[Watch Video Solution](#)

17. Which of the following tissues is absent in Hydra?

A. Connective tissue

B. Epithelial tissue

C. Muscular tissue

D. Nervous tissue

**Answer: A**



**Watch Video Solution**

**18.** Association of Zoochlorella and Hydra is the example of

A. parasitism

B. mutualism

C. cohabitation

D. commensalism

**Answer: B**



**Watch Video Solution**

**19. Interstitial cells renew**

- A. all the cells of Hydra
- B. a few cells of Hydra
- C. a large number of cells of Hydra
- D. they do not renew cells.

**Answer: A**



**Watch Video Solution**

20. Who first discovered the regenerative ability of Hydra?

A. Aristotle

B. Linnaeus

C. Darwin

D. Tremley

**Answer: D**



**Watch Video Solution**



21. Nematocyst is

- A. non-living capsulated structure within the cnidoblast
- B. living part of cnidoblast
- C. lying outside the cnidoblast
- D. none of the above

**Answer:**



**Watch Video Solution**

22. Hypnotoxin is a poisonous fluid produced by

A. Parasitic protozoa

B. Nematocysts

C. Sponges

D. Ascaris

**Answer: B**



**Watch Video Solution**

**23.** Hydra can be

A. monoecious

B. marine

C. viviparous

D. monoecious or dioecious

**Answer: D**



**Watch Video Solution**

**24.** Portuguese Man of War is

A. Pennatula

B. Coral

C. Physalia

D. Obelia

**Answer: C**



**Watch Video Solution**

**25. Metagenesis is found in**

A. Obelia

B. Hydra

C. Tubipora

D. Metridium

**Answer: A**



**Watch Video Solution**

**26.** Pneumatophore is present in

A. Hydra

B. Obelia

C. Physalia

D. Aurelia

**Answer: C**



**Watch Video Solution**

**27. Coral island is**

A. Srilanka

B. Greenland

C. Lakshadweep

D. Madras

**Answer: C**



**Watch Video Solution**

**28. In Hydra**

- A. One testis and one ovary present
- B. One testes and many ovary present
- C. many testes and many ovary present
- D. Many testes and one ovary present

**Answer: D**



**Watch Video Solution**

**29.** The characteristic larva of phylum coelenterata is

A. Planula

B. Cystecierus

C. rhabdiform

D. wriggler



**Answer: A**



**Watch Video Solution**

**30. Which one is mismatched ?**

A. Hydra vulgaris- sea water

B. Hydra gangetica-- fresh water

C. Obelia -sea water

D. Physalia-sea water

**Answer: A**



[Watch Video Solution](#)

**31. Find the odd example**

A. Sea lily

B. Sea fan

C. Sea cucumber

D. Sea urchin

**Answer: B**



[Watch Video Solution](#)

**32. Digestion in Hydra is**

- A. intecellular
- B. intracellular
- C. both 1) and 2)
- D. none of these

**Answer: B**



**Watch Video Solution**

**33.** Primitive nervous system is formed in

A. sponge

B. cnidaria

C. echinodermata

D. annelida

**Answer: D**



**Watch Video Solution**

34. Digestive tract in ctenophores is

A. complete

B. incomplete

C. both 1) and 2)

D. none

**Answer: A**



**Watch Video Solution**

**35.** In ctenophores, anal pore/pores is/are

A. one

B. two

C. three

D. four

**Answer: B**



**Watch Video Solution**

**36.** Nervous system of ctenophores is similar to

A. Cnidaria

B. Platyheminthes

C. Nemathelminthes

D. annelida

**Answer: A**



**Watch Video Solution**

37. Paedogenesis is observed in

A. Ctenophores

B. Liver fluke

C. Both 1) and 2)

D. Ascaris

**Answer: C**



**Watch Video Solution**

38. Cleavage in ctenophores is



A. equal

B. radial

C. incomplete

D. determinate

**Answer: D**



**Watch Video Solution**

**39.** During development of ctenophores there is a ciliated spherical larve which is called

A. cysticercus

B. miracidium

C. cydippid larva

D. glochidium

**Answer: C**



**Watch Video Solution**

**40.** Ctenophora have some similarities (or relation) with the phylum

A. Porifera

B. Coelenterata

C. Annelida

D. Arthropoda

**Answer: B**



**Watch Video Solution**

**41. Comb plates are found in**

A. Adamsia

B. Aurelia

C. Neries

D. Pleurobrachia

**Answer: B**



**Watch Video Solution**

**42.** Bioluminescence is well marked in

A. flatworms

B. ctenophores

C. cnidarians

D. aschelminthes

**Answer: B**



**Watch Video Solution**

**43.** Biradial symmetry is found in

A. Beroes

B. Hydra

C. Sponges

D. Labeo

**Answer: A**



**Watch Video Solution**

**44.** Which animal would not survive, if there were no ponds of water?

A. Fasciola

B. Ascaris

C. Entamoeba

D. Taenia

**Answer: A**



**Watch Video Solution**

**45.** Alimentary canal is not found in

A. Arachnida

B. Apoda

C. Gastrropoda

D. Cestoda

**Answer: D**



**Watch Video Solution**

**46.** Food is sucked in by *Fasciola hepatica* with the help of

A. oral sucker

B. muscular pharynx

C. oral sucker and pharynx

D. mouth



**Answer: C**



**Watch Video Solution**

**47. Anus is absent in**

A. Unio

B. Pheretima

C. Periplaneta

D. Fasciola

**Answer: D**



[Watch Video Solution](#)

**48.** Parasitic animals have well-developed

- A. digestive system
- B. reproductive system
- C. respiratory system
- D. all of the above

**Answer: B**



[Watch Video Solution](#)

**49.** The intermediate host in the life-cycle of liver fluke is in

A. Pila

B. Snail

C. Sheep

D. pig

**Answer: B**



**Watch Video Solution**

50. Copulation in Taenia occurs between

A. two Taenia

B. Male and female taenia

C. two proglottides

D. two mature proglottides of different species.

**Answer: C**



**Watch Video Solution**

51. The seat of proliferation with fertilised eggs in the uterus of tapeworm are regularly detached. This is known as

A. scolex

B. strobila

C. neck

D. the whole body.

**Answer: C**



**Watch Video Solution**

52. The matured proglottides with fertilised eggs in the uterus of tapeworm are regularly detached. This is known as

A. proliferation

B. strobilation

C. apolysis

D. topolysis

**Answer: C**



**Watch Video Solution**

53. *T.solium* passes on to secondary (intermediate) host at which stage?

A. Onchosphere

B. Hexacanth

C. Cysticercus

D. Bladderworm

**Answer: A**



**Watch Video Solution**

54. Bladderworm (cysticercus) is the larva of

A. Liver fluke

B. Planaria

C. Tape worm

D. Round worm

**Answer: C**



**Watch Video Solution**



55. When cysticerci are present in the muscles of pig it is called

- A. cysticercosis
- B. bladderworm
- C. hydatid cyst
- D. measly pork

**Answer: D**



**Watch Video Solution**

56. The following are found in *Taenia solium*.

Which one is the correct sequence?

A. Onchosphere, hexacanth, cysticercus,  
matured proglottid, gravid

B. Matured proglottid, cysticercus, gravid,  
onchosphere, gravid

C. Hexacanth, cysticercus, gravid, oncho-  
sphere, matured proglottid

D. Gravid, onchosphere, cysticercus,  
hexacanth, matured proglottid

**Answer: A**



**Watch Video Solution**

**57.** Give the correct match in the following

**Column I**

**Column II**

(A) Flame cells	<i>P</i> Sponges
(B) Collar Cells	<i>q</i> Hydra
(C) Stinging Cells	<i>r</i> Planaria
(D) —	<i>s</i> Ascaris

A. A=r, B=p, C=q

B. A=r, B=p, C=s

C. A=r, B=s, C=s

D. A=r, B=s, C=p

**Answer: A**



**Watch Video Solution**

**58.** During its life cycle fasciola hepatica (Liver fluke) infects its intermediate host and primary host at the following larval stages respectively

A. Redia and miracidium

B. Cercaria and redia

C. Metacercaria and cercaria

D. Miracidium and metacercaria

**Answer: D**



**Watch Video Solution**

**59.** In contrast to Annelids the Platyhelminthes show

A. radial symmetry

B. presence of pseudocoel

C. bilateral symmetry

D. absence of body cavity

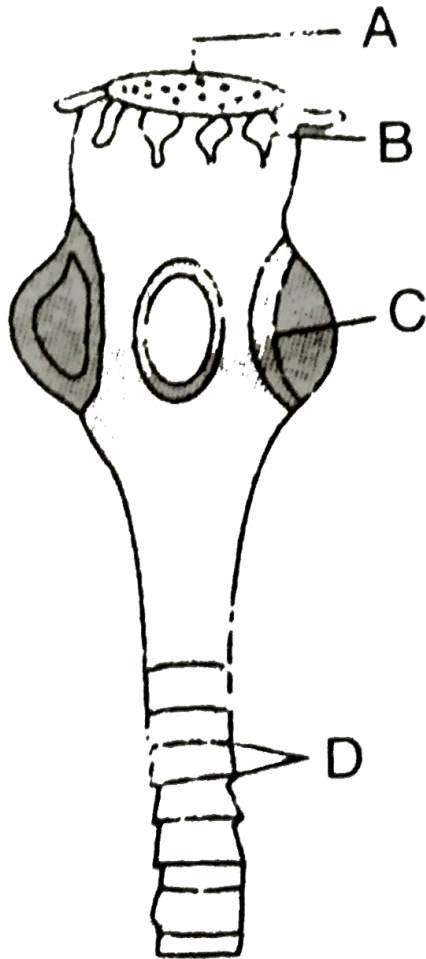
**Answer: D**



**Watch Video Solution**

**60.** In the given diagram, different parts are indicated by alphabets. Choose the answer, in which these alphabets correctly match with

the parts they indicate.



A. A-Rostellum

B- Hooks

C-Sucker

D-Proglottids

B. A-Suctorial mouth

B-Hooks

C-Sucker

D- Segments

C. A-Mouth

B-Tentacles

C-Sucker

D- Segments



D. A-Sucker

B-Hairs

C-Ring

D-Proglottids

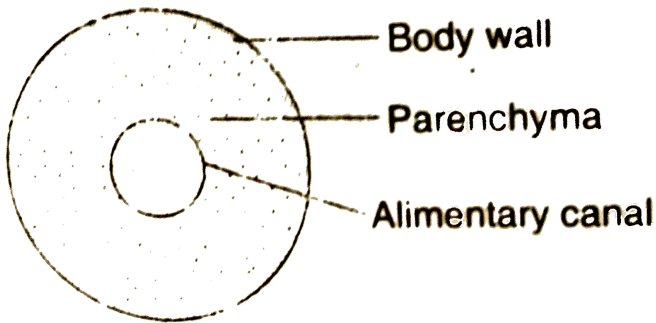
**Answer: A**



**Watch Video Solution**

**61.** The cross-section of the body of an invertebrate is given below. Identify the

animal, which has this body plan.



A. Cockroach

B. Roundworm

C. Planaria

D. Earthworm

**Answer: C**



**Watch Video Solution**

**62.** Organs of excretion and osmoregulation in

Platyhelminthes are

A. Contractile vacuoles

B. Flame cells

C. Nephridia

D. Hepatic caecae

**Answer: B**



**Watch Video Solution**

**63.** Which one of the following animals possesses high regeneration capacity?

A. Planaria

B. Taenia

C. Salpa

D. Periplaneta

**Answer: A**



**Watch Video Solution**

**64.** One example of animals having a single opening to the outside that serves both as mouth as well as anus is

A. Octopus

B. Asterias

C. Ascidia

D. Fasciola

**Answer: D**



**Watch Video Solution**

**65.** Roundworms differ from flatworms in having a

- A. circulatory system
- B. pseudoceol
- C. dorsal nerve cord
- D. circular muscle layer

**Answer: B**



**Watch Video Solution**

**66.** Phasmids of *Ascaris* are

A. tactile

B. chemoreceptor

C. photoreceptor

D. 1) and 3)

**Answer: B**



**Watch Video Solution**

67. Male *Ascaris* can be differentiated from female *Ascaris* by

- A. Pineal setas
- B. 50 parts of preanal papillae
- C. 5 pairs of postanal papillae
- D. all of them

**Answer: D**



**Watch Video Solution**



**68.** The lips of *Ascaris* are

A. denticulate

B. cartilaginous

C. smooth

D. bony

**Answer: A**



**Watch Video Solution**

69. Cuticle of *Ascaris* is noncellular and beneath the cuticle in *Ascaris* lies a thin epidermis having scattered nuclei and no separate cells, this epidermis is

A. multicellular

B. syncytial

C. aseptate

D. none of these

**Answer: B**



Watch Video Solution

70. Excretory structures in adult *Ascaris* are

- A. renette cells
- B. excretory canals
- C. Nephridia
- D. malpighian tubules

**Answer: A**



**Watch Video Solution**

71. Moulting of Second instar larva of Ascaris occurs in

- A. intestine
- B. sand
- C. blood vessels
- D. lungs

**Answer: D**



**Watch Video Solution**

72. Eggs containing the second state juvenile are

A. ootheca

B. embryonated eggs

C. fertilized eggs

D. unfertilized eggs

**Answer: A**



**Watch Video Solution**

**73.** The final moult of the rhabditiform larva of *Ascaris* occurs in human

A. heart

B. liver

C. intestine

D. lungs

**Answer: C**



**Watch Video Solution**

74. Second state larva goes on three week typical wandering tour. The course of travel is as follows,

A. Small intestine,liver, heart, lung

B. small intestine, lung, liver

C. small intestine, liver, lung, heart

D. liver, heart, lung, small intestine

**Answer: A**



**Watch Video Solution**

75. Cleavage in the egg of Ascaris is

- A. holoblastic and determine type
- B. holoblastic and indeterminate type
- C. discoidal
- D. superficial

**Answer: A**



**Watch Video Solution**



76. Which larval stage of Ascaris is infective?

- A. first and fourth
- B. second and third
- C. first and second
- D. third and fourth.

**Answer: C**



**Watch Video Solution**

77. Life span of Ascaris is

- A. 6-9 months
- B. 9-12 months
- C. 4-10 months
- D. 10-12 weeks

**Answer: B**



**Watch Video Solution**

78. Which of the following sense organs is present in *Ascaris* are chemoreceptors and located in anterior part?

- A. pineal spicules
- B. pineal setate
- C. amphids
- D. copulatory Bursa.

**Answer: C**



**Watch Video Solution**

79. Cyclope is intermediate host of

- A. Planaria
- B. Echinococcus
- C. Dracunculus
- D. Ancylostoma

**Answer: C**



**Watch Video Solution**

**80.** Oil of Chenopodium and drug named Alcopar are used in

A. Malaria

B. typhoid

C. tuberculosis

D. ascariasis

**Answer: D**



**Watch Video Solution**

**81.** Filariasis is caused by

- A. *Taenia solium*
- B. *Fasciola hepatica*
- C. *Ascaris lumbricoides*
- D. *Wuchereria bancrofti*

**Answer: D**



**Watch Video Solution**

**82.** The technical name of guineaworm is

A. Ancylostoma

B. Enterobius Trichinella

C. Dracunculus

D.

**Answer: D**



**Watch Video Solution**

**83.** Ascaris is

A. Monecious

B. Dioecious

C. Both

D. None of these

**Answer: A**



**Watch Video Solution**

**84.** Which of the following is an unsegmented and viviparous worm?

A. Ascaris



B. Filaria

C. Taenia

D. Fasciola

**Answer: B**



**Watch Video Solution**

**85.** The common name of *Ancylostoma* is

A. Pinworm

B. Whipworm

C. Hookworm

D. Guineaworm

**Answer: C**



**Watch Video Solution**

**86.** Filarial larvae are found in man's (host)

A. smears of spleen

B. biopsy of liver

C. peripheral blood at mid night

D. smear of intestinal contents

**Answer: C**



**Watch Video Solution**

**87.** Swelling of legs and scrotum occurs due to

A. blockage of lymphatic vessel by a

number of worms

B. accumulation of lymph in these organs

C. accumulation of dead and living worms,

lead to swelling

D. 1) and 2) are correct

**Answer: D**



**Watch Video Solution**

**88.** Which of the following parts of the human body is least affected by filariasis?

A. scrotum

B. Leg

C. Mammary gland

D. Penis

**Answer: D**



**Watch Video Solution**

**89.** Adult worms of *Wuchereria* are found in human

A. blood vessels

B. lymph vessels and lymph glands

C. veins

D. arteries

**Answer: B**



**Watch Video Solution**

**90.** Ancylostoma causes

A. itching

B. inflammation of the skin

C. pulmonary infection

D. all of the above

**Answer: D**



**Watch Video Solution**

**91. Microfilariae are carried by**

A. Sandfly

B. Culex mosquito

C. Anopheles mosquito

D. Housefly

**Answer: B**



**Watch Video Solution**

**92.** Wuchereria causes a disease in which parts of India

A. Filariasis-South

B. Elephantiasis- Bihar

C. Elephantiasis- Karnatka



D. none of the above

**Answer: B**



**Watch Video Solution**

**93.** In India, filariasis is transmitted by

A. *Culex fatigans*

B. *Anopheles culicifacies*

C. *Musca domestica*

D. *Aedes aegypti*

**Answer: A**



**Watch Video Solution**

**94.** In *Ascaris* 3rd moulting takes place in

A. intestine

B. lung

C. liver

D. egg

**Answer: B**



Watch Video Solution

95. Differentiating trait of *Ascaris* is

A. sexual dimorphism and rhabditiform larva

B. unisexual and digenetic parasite

C. pseudocoelom and metameric segmentation

D. hermaphrodite and pseudocoelom

**Answer: A**



**Watch Video Solution**

**96.** Sites of first, second and third moulting of *Ascaris* larva are

A. soil, lung, intestine

B. soil, alveoli, lung

C. soil, intestine, lung

D. liver, stomach, intestine

**Answer: C**



**Watch Video Solution**

**97.** Which of the following penetrates through skin and enters the intestine

A. Ascaris

B. Tapeworm

C. Hookworm

D. Amoeba

**Answer: C**



**Watch Video Solution**

**98.** The dioecious animal is

A. Liverfluke

B. Hookworm

C. Tapeworm

D. Earthworm

**Answer: B**



Watch Video Solution

**99.** Ascaris is characterized by the

A. Absence of neither true coelom nor metamerism

B. presence of true coelom but absence of metamerism

C. presence of true coelom and metamerism (metamerisation)

D. absence of true coelom

**Answer: A**



**Watch Video Solution**

**100.** The parasite which completes its life cycle in a single host is

- A. Fasciole hepatica
- B. Plasmodium vivax
- C. Taehia solium
- D. Ascaris lumbricoides



**Answer: D**



**Watch Video Solution**

**101.** Match the List I with List II and select the correct option.

<b>List I</b>	<b>List II</b>
<b>A</b> Protozoa	<i>Pennatula</i>
<b>B</b> Aschelminthes	<i>Beroe</i>
<b>C</b> Porifera	<i>Monocystis</i>
<b>D</b> Ctenophora	<i>Wuchereria</i>
<b>E</b> Cnidaria	<i>Cliona</i>

**A. A-3, B-5, C-4, D-1,E-2**

B. A-4, B-3, C-5, D-, E-1

C. A-3, B-4, C-5, D-2, E-1

D. A-2, B-4, C-5, D-3, E-1

**Answer: C**



**Watch Video Solution**

**102.** What is the common between earthworm, leech and centipede?

A. These are hermaphrodite

B. These have no legs

C. These have a ventral nerve cord

D. These have Malpighian tubules

**Answer: C**



**Watch Video Solution**

**103.** Trochophore larva is present in the development of

A. Earthworm

B. Nereis

C. Leech

D. Frog

**Answer: B**



**Watch Video Solution**

**104.** Heart is absent in

A. Nereis and Amphioxus

B. Pheretima

C. Nereis

D. Amphioxus

**Answer: A**



**Watch Video Solution**

**105.** Parapodia are present in

A. Leech

B. Earthworm

C. Nereis

D. Housefly

**Answer: C**



**Watch Video Solution**

**106.** Heteronereis is a

- A. another name of Nereis
- B. genus of an annelid
- C. asexual phase of Nereis
- D. sexual phase of Nereis

**Answer: D**



**Watch Video Solution**

**107.** Leech secretes which of the following anticoagulant

A. Hirudin

B. Heparin

C. Serotonin

D. Histamine

**Answer: A**



**Watch Video Solution**

**108.** The unique characteristic of phylum annelida is

A. coleom

B. nephridia

C. hermaphrodite

D. cingulum



**Answer: B**



**Watch Video Solution**

**109.** First segment of annelids is

- A. prostomium
- B. peristomium
- C. cingulum
- D. parietal peritoneum

**Answer: B**



[Watch Video Solution](#)

**110.** Blood pigment of annelids is

A. haemoglobin

B. cyanin

C. haemanin

D. haemocyanin

**Answer: A**



[Watch Video Solution](#)

**111.** A trait common in Leech and Mosquito is

A. anticoagulant

B. asexual reproduction

C. cellular level of organisation

D. absence of asexual phase

**Answer: A**



**Watch Video Solution**

**112.** Hirudinaria is

- A. omnivorous
- B. carnivorous
- C. herbivorous
- D. sanguivorous

**Answer: D**



**Watch Video Solution**

**113.** Body cavity of annelids/Nereis is

A. schizocoel

B. enterocoel

C. pseudocoel

D. none of these

**Answer: D**



**Watch Video Solution**

**114.** Number of eyes present on the prostomium of Nereis is

A. four

B. three

C. two

D. one

**Answer: A**



**Watch Video Solution**

**115.** Which of the following is common in Annelida and Arthropoda?

- A. Basal nerve cord
- B. Dorsal nerve cord
- C. Ventral nerve cord
- D. Anterior nerve cord

**Answer: C**



**Watch Video Solution**

**116.** Which is not correctly matched?

A. Annelida- Enterocoelomate

B. Arthropoda - Schizocoelomate

C. Platyhelminthes - Acoelomate

D. Nematelminthes - Pseudocoelomate

**Answer: A**



**Watch Video Solution**



117. A) It is fresh water matamerically segmented prostostome

B) the clitellum is absent

C) Its larval form is Trochophore

D) It is unisexual

E) The nervous system is found in the epidermis

Which one of the above is true of 'Paddle worm'?

A. A, B and E

B. B,C and E

C. B,C and D

D. C, D and E

**Answer: C**



**Watch Video Solution**

**118.** A pair of male genital pores in earthworm are present on the ventro-lateral sides of the

A. 14th segment

B. 18th segment

C. 10th segment

D. 15th segment

**Answer: B**



**Watch Video Solution**

**119.** The stages between larval moults in an insects are called

A. pupae

B. instars

C. grubs

D. caterpillars

**Answer: B**



**Watch Video Solution**

**120.** Which set includes pathogenic arthropods

A. Tse-tse fly, mosquito, flea-plague

B. Crab, Culex, spider

C. Anopheles, culex, cray-fish

D. Silver-fish, housefly, sand-fly

**Answer: A**



**Watch Video Solution**

**121. Which one is not a fish**

A. Cat fish

B. Dog fish

C. Silver fish

D. Lung Fish

**Answer: C**



**Watch Video Solution**

**122.** The desert locust would be living in isolation or near locality will depend upon

A. its spices

B. its kinds

C. its genes

D. its food and climatic conditions

**Answer: C**



**Watch Video Solution**

**123.** Wasp, gilamonster, centipede, scorpoin and honey bee are

A. terrestrial

B. viviparous

C. social

D. poisonous

**Answer: D**



**Watch Video Solution**

**124.** Glow worm is

A. mollusc

B. annelid

C. insect

D. helminth

**Answer: C**





Watch Video Solution

**125.** Which of the following is a viviparous animal?

A. Prawn

B. Scorpion

C. Silverfish

D. Leech

**Answer: B**



**126.** Respiratory pigment in insects is

A. haemoglobin

B. cytochrome

C. haemocyanin

D. none

**Answer: D**



127. Which one is not an insect

A. Housefly

B. Butterfly

C. Spider

D. Moth

**Answer: C**



**Watch Video Solution**

**128.** How many cocoons of the silkmoth *Bombyx mori* have to be boiled for one pound of silk?

A. 25000

B. 100

C. 1000

D. 2000

**Answer: D**



**Watch Video Solution**

**129.** At a time a female *Anopheles* lays eggs singly in water, which are approximately

A. 40-100 eggs

B. 150-300 eggs

C. 100-200 eggs

D. more than 1000 eggs

**Answer: A**



**Watch Video Solution**

**130.** Mouth parts of female Anopheles are suitable for

- A. chewing
- B. piercing and sucking
- C. chewing and cutting
- D. sucking

**Answer: B**



**Watch Video Solution**

**131.** Which mouth part occurs in female Anopheles but not in males?

A. Proboscis

B. Mandibles

C. Antennae

D. Maxillae

**Answer: D**



**Watch Video Solution**

**132.** Johnson's organs are present in

A. abdomen of housefly

B. head of cockroach

C. antenna of mosquito

D. none of the above

**Answer: C**



**Watch Video Solution**

**133.** Complete metamorphosis is found in



A. Bed bug

B. Locust

C. Mosquito

D. Silver fish

**Answer: C**



**Watch Video Solution**

**134.** Proboscis is the

A. labium

B. labrum-epipharynx

C. hypopharynx

D. all of these

**Answer: A**



**Watch Video Solution**

**135.** Which of the following are correspondingly the pathogen and vector of malaria?

- A. Leishmania and sandfly
- B. Plasmodium and Anopheles
- C. Trypanosoma and rat flea
- D. Trichomonas and blowfly

**Answer: B**



**Watch Video Solution**

**136.** Aedes is the carrier of

- A. dengue fever

B. malaria

C. yellow fever

D. both 1) and 3)

**Answer: D**



**Watch Video Solution**

**137.** Larva of Mosquito is

A. grub

B. maggot

C. wriggler

D. caterpillar

**Answer: C**



**Watch Video Solution**

**138.** Which of the following insects is useful to man?

A. Dragon fly

B. Grass hopper

C. Moth

D. Termite

**Answer: A**



**Watch Video Solution**

**139.** Which of the following is a secretion of insect?

A. Pearl

B. Honey

C. Lac

D. Coral

**Answer: C**



**Watch Video Solution**

**140.** What is obtained from the body of insects?

A. Pearl

B. Sugar

C. Lac

D. Shagreen

**Answer: C**



**Watch Video Solution**

**141.** Adult butterfly can ingest food which is

A. solid and liquid

B. only solid

C. only liquid



D. only gas

**Answer: C**



**Watch Video Solution**

**142.** Silk is a secretion by silk worm from its special

A. fat bodies

B. malpigan tubules

C. poison

D. salivary glands

**Answer: D**



**Watch Video Solution**

**143.** Rearing of silkworm is called:

A. apiculture

B. pisciculture

C. agronomy

D. sericulture

**Answer: D**



**Watch Video Solution**

**144.** Who was the first to draw attention to the fact that bees communicate by means of definite movements now called "bee dances"?

A. T.A. Huxley

B. Andreas Vesalius

C. A.I. Oparin

D. Ernest Spytzner

**Answer: D**



**Watch Video Solution**

**145.** Which scientist decoded the language of honey bee and was awarded Nobel prize for his work?

A. Carolus Linnaeus

B. Charles darwin

C. Karl von Frisch

D. William Harvey

**Answer: C**



**Watch Video Solution**

**146.** "Royal jelly" is secreted by worker Honeybees. Name the gland which secretes "royal jelly".

- A. Labial gland
- B. Maxillary glands
- C. Mandibular gland
- D. Labral gland

**Answer: B**



**Watch Video Solution**

**147.** In Honey bee drones (males) are produced from

A. unfertilized eggs

B. fertilized eggs

C. royal jelly fed larva from fertilized eggs

D. unfertilized eggs not cared by workers at  
all

**Answer: A**



**Watch Video Solution**

**148.** Which of the following are vector hosts?

A. Rabbit, snake, lizard, frog

B. Sand fly, tse fly, house fly, culex

C. Tse tse fly, Trypanosoma, sand fly,  
leishmania

D. House fly, frog, sand fly

**Answer: B**



**Watch Video Solution**

**149.** Best method for insect control is

A. mechanical control

B. physical control



C. biological control

D. both 1) and 2)

**Answer: C**



**Watch Video Solution**

**150. Bed bug transmits**

A. typhus fever

B. leprosy

C. 1) and 2)

D. kala azar

**Answer: C**



**Watch Video Solution**

**151.** Locusts are found breeding in India in

A. Uttar pradesh

B. Rajasthan

C. Kerala

D. Kashmir

**Answer: B**



**Watch Video Solution**

**152.** Rearing of silkworm is done on large scale  
in

A. china

B. India

C. japan

D. All of these

**Answer: D**



**Watch Video Solution**

**153.** Yellow fever is transmitted by

- A. female culex
- B. female anophilies
- C. female aedes
- D. housefly

**Answer: A**



Watch Video Solution

**154.** True and complete metamorphosis occurs  
in

A. Silver

B. Bed bugs

C. Grasshoppers

D. Moths and mosquitoes.

**Answer: D**



**155.** From which stage of silk moth, the silk is obtained?

A. Adult

B. Caterpillar

C. Egg

D. Pupa

**Answer: D**



**156.** Book lungs are the respiratory organs found in

A. insects

B. crustaceans

C. millipedes

D. scorpions

**Answer: D**



**Watch Video Solution**

157. In honey bees, the royal jelly is fed to

A. queen

B. drones

C. larva that becomes the queen

D. 1) and 3)

**Answer: D**



**Watch Video Solution**



**158.** Main function of halteres (reduced wings) on the metathroax of mosquito is to

- A. provide balance in flight
- B. speed up the light
- C. emit sound
- D. frighten enemies.

**Answer: A**



**Watch Video Solution**

**159.** Which of the following insects is regarded as greatest mechanical carrier of diseases?

A. Xenopsella

B. Musca

C. Cimex

D. Pediculus

**Answer: B**



**Watch Video Solution**

**160.** Pollen basket occurs in Honey Bee on

A. prothoracic leg

B. mesothoracic leg

C. methathoracic leg

D. union of thorax and abdomen

**Answer: C**



**Watch Video Solution**

**161.** In which bee, the wax glands are present in

A. worker

B. drone

C. queen Bee

D. both queen and worker bees

**Answer: A**



**Watch Video Solution**

**162.** Which one is a tracheate group

A. King Crab- Scorpion- Housefly

B. Crab- Centipede - Cockroach

C. Spider- Peripatus - Mosquito

D. Bed bug- Sandfly - Silkworm

**Answer: D**



**Watch Video Solution**

**163.** Arrhenotoky is parthenogenetic development found in

A. all insects

B. mosquitoes

C. butterflies

D. honey, bees, wasps and ants

**Answer: D**



**Watch Video Solution**

**164.** Trilobites evolved in

A. precambrian

B. ordovician

C. silurian

D. cambrian

**Answer: D**



**Watch Video Solution**

**165.** Silk fibre contains protein

- A. fibroin and sericine
- B. collagen and elastin
- C. fibrin and sericine
- D. chondrin and mucin

**Answer: A**



**Watch Video Solution**

**166.** Most widely reared Honey Bee species of india is



A. *Apis mellifera*

B. *Apis dorsata*

C. *Apis indica*

D. *Apis florea*

**Answer: C**



**Watch Video Solution**

**167.** Cray fish is

A. crustacean

B. edible fish

C. poisonous fish

D. mammal.

**Answer: A**



**Watch Video Solution**

**168.** Honey is acidic and mainly consists of

A. polysaccharides

B. disaccharides

C. monosaccharides

D. fats

**Answer: C**



**Watch Video Solution**

**169.** If the honey bee is performing round dance it is conveying the information of food source from the hive at a distance of

A. 50 metres

B. 100 metres

C. 1000 metres

D. 2000 metres

**Answer: A**



**Watch Video Solution**

**170.** Arthropods lack

A. jointed appendages

B. cilia

C. respiratory organs

D. segmented body

**Answer: B**



**Watch Video Solution**

**171.** Common among Moth, Frog and Mosquito

is

A. body differentiated into head, throat

and abdomen

B. life history is carried out partly in water

C. larvae feed on a different type of food

D. skin acts on main respiratory organ

**Answer: C**



**Watch Video Solution**

**172.** What is common amongst Earthworm,

Cockroach and Centipede?

A. metamersim

B. sexual dimorphism

C. chitinous exoskeleton

D. haemocoel

**Answer: C**



**Watch Video Solution**

**173.** What is true about Nereis, Scorpion, Cockroach and Silver fish?

A. None of them is aquatic

B. They all belong to the same phylum

C. They all have jointed paired appendages

D. They all possess dorsal heart

**Answer: C**



**Watch Video Solution**

**174.** Which one of the following groups of three animals each is correctly matched with



their characteristic morphological feature?

<i>Animals</i>	<i>Morphological feature</i>
(1) Centipede, Prawn, Sea urchin	jointed appendages
(2) Scorpion, Spider Cockroach	Ventral solid central nervous system
(3) Cockroach, Locust <i>Taenia</i>	Metameric segmentation
(4) Liver fluke, Sea anemone, Sea cucumber	Bilateral symmetry



**Watch Video Solution**

**175.** In which of the following organisms  
Malpighian tubule is found?

A. Honey bee

B. Frog

C. *Ascaris lumbricoides*

D. Rabbit

**Answer: A**



**Watch Video Solution**

**176.** Which one of the following pair of items correctly belongs to the category of organs mentioned against it?

- A. Necessitating membrane and blind spot in human eye - Vestigial organs
- B. Nephridia of Earth worm and Malpighian tubules of Cockroach - Excretory organs
- C. Wings of Honey bee and wings of Crow - Homologous organs
- D. Thorn of *Bougainvillea* and tendrils of *Cucurbita* - Analogous organs

**Answer: B**



Watch Video Solution

**177.** Karl von Frisch was awarded Nobel prize in medicine or physiology in

A. 1970

B. 1972

C. 1973

D. 1974

**Answer: C**



**178.** In which stage of its life cycle the silkworm begins to produce silk fibre?

- A. 3rd instar larva
- B. 4th instar larva
- C. 5th instar larva
- D. pupa

**Answer: D**



**179.** Name one disease of mulberry silk worm caused by Protozoa an(Nosema bombycis)

A. Pebrine

B. Graseri

C. Flacheir

D. Mascardine

**Answer: A**



**Watch Video Solution**

**180.** Centrolecithal eggs are characteristic of

A. Frog

B. Mammals

C. Insecta

D. Star fish

**Answer: C**



**Watch Video Solution**

**181.** In which of these animals antennal gland functions as excretory organ?

A. Human being

B. Cockroach

C. Planaria

D. Prawn

**Answer: D**



**Watch Video Solution**



**182.** The scientific name of Asian tiger mosquito is

- A. *Aedes aegypti*
- B. *Aedes albopictus*
- C. *Aedes taeniarhynchus*
- D. *Aedes albolineatus*

**Answer: B**



**Watch Video Solution**

**183.** Life span of Honey Bee drone is

- A. 3--4 months
- B. 1--2 months
- C. 6--7 months
- D. 10-12 months

**Answer: B**



**Watch Video Solution**

**184.** The larva of *Bombyx mori* is known as

A. nymph

B. trochophore

C. cocoon

D. caterpillar

**Answer: D**



**Watch Video Solution**

**185.** A dorsal horn is present on the .....of mulberry silk worm (caterpillar)

A. 5th abdominal segment

B. 2nd thoracic segment

C. head

D. 8th abdominal segment

**Answer: D**



**Watch Video Solution**

**186.** Worker Bees are :

A. sterile females

B. fertile females

C. when queen is absent then act as fertile  
females

D. sterile drones

**Answer: A**



**Watch Video Solution**

**187.** Peripatus is a connecting link between :

A. Annelida and Arthropoda

B. Coelenterata Porifera

C. Ctenophora and Platyhelminthis

D. Mollusca and Echinodermata

**Answer: A**



**Watch Video Solution**

**188.** which one of the following is used as biological insecticide ?

A. Tiger beetle

B. Caterpillar

C. Silkmoth

D. Mazra poka

**Answer: A**



**Watch Video Solution**

**189.** What is the genetic name of Sea hare?

A. Pila

B. Teredo

C. Aplysia

D. Sepia

**Answer: C**



**Watch Video Solution**

**190.** Ink-gland is absent in



A. Loligo

B. Sepia

C. Octopus

D. Nautilus

**Answer: D**



**Watch Video Solution**

**191.** Which set has different types of animals?

A. Sea cow, seal, whale, bat

B. King crab, cockroach, silver fish, spider

C. cuttle fish, cray fish, hag fish,

D. Sea feather, sea urchin, star fish

**Answer: C**



**Watch Video Solution**

**192.** The method of induction of foreign particles between the mantle and the shell of pearl oyster for the simulation of pearl formation was introduced in Japan by

A. Mikimoto

B. Katu

C. Haeckel

D. Von Mohl

**Answer: A**



**Watch Video Solution**

**193.** The most primitive mollusc and living fossil is

A. Neopilina

B. Chiton

C. Dentalium

D. Patella

**Answer: A**



**Watch Video Solution**

**194. Glochidium larva belongs to**

A. Pila

B. Fresh water mussel

C. Cypraea

D. Loligo

**Answer: B**



**Watch Video Solution**

**195.** The respiratory organs in a fresh water mussel are

A. pulmonary sac

B. book lungs

C. Gills

D. tracheae

**Answer: C**



**Watch Video Solution**

**196.** Life cycle of liver fluke is digenetic. Its intermediate hosts are fresh water snails which are

A. Lymnaea and Planorbis

B. Pila and Lymnaea

C. Limax and Helix

D. Limax and Onchidium

**Answer: A**



**Watch Video Solution**

**197.** Study of mollusca is called

A. Malacology

B. Conchology

C. Mammolgy

D. Mastology

**Answer: A**



**Watch Video Solution**

**198.** The elephant tusk shell is

A. Dentalium

B. Limax



C. Cypraea

D. Nautilus

**Answer: A**



**Watch Video Solution**

**199.** Ink glands or sacs produce coloured pigment which is ejected out into the water and form smoke screen for offence and defence. Such sacs are found in

A. Sepia

B. Pecten

C. Mytilus

D. Teredo

**Answer: A**



**Watch Video Solution**

**200.** The largest invertebrate is

A. Giant octopus

B. Giant squid

C. Giant snail

D. giant Claim

**Answer: B**



**Watch Video Solution**

**201.** A triploblastic animal with bilateral symmetry in larval stage but asymmetry in adult is

A. arachnid

B. echinoderm

C. gastropod

D. bivalve

**Answer: C**



**Watch Video Solution**

**202. Visceral mass is characteristic of**

A. arthropods

B. molluscs

C. echinoderms

D. All of these

**Answer: B**



**Watch Video Solution**

**203.** Respiratory pigment of molluscs is

A. haemocyanin

B. haemoglobin

C. erythrocrucorin

D. none of these

**Answer: A**



**Watch Video Solution**

**204.** An internal shell is absent in

A. Sepia

B. Loligo

C. Pila

D. Both 1) and 2)

**Answer: D**



**Watch Video Solution**

**205.** Osphradium of *Pila globosa* is

- A. chemoreceptor
- B. photoreceptor
- C. thermoreceptor
- D. tangoreceptor

**Answer: A**



**Watch Video Solution**

**206.** A mollusc previously used as currency is

- A. Turbinella
- B. Dentalium
- C. Pila
- D. Cypraea

**Answer: D**





[Watch Video Solution](#)

**207.** Study of (molluscan) shells is called

- A. conchology
- B. malacology
- C. entomology
- D. mastology

**Answer: A**



[Watch Video Solution](#)

**208.** A rasping organ with transverse teeth and present in the buccal cavity of a mollusc is called

A. Dental plate

B. Radula

C. Tongue

D. Rasper

**Answer: B**



**Watch Video Solution**

**209.** Pila respire by

A. ctendia

B. pulmonary sac

C. mantle

D. all of these

**Answer: D**



**Watch Video Solution**

**210.** Torsion occurs in the visceral mass of

A. cephalopods

B. gastropods

C. scaphopods

D. pelecypods

**Answer: B**



**Watch Video Solution**

**211.** Excretory organs of *Unio* are

A. Organs of Bojanus

B. Keber's organ

C. 1) and 2)

D. Malpighian tubules

**Answer: C**



**Watch Video Solution**

**212.** One of the arms of a male mollusc is used to transfer sperms into the female. Which is this animal?

A. Pila

B. Loligo

C. Octopus

D. Teredo

**Answer: C**



**Watch Video Solution**

**213.** Rectum passes through the heart of

A. Pila

B. Cockroach

C. Unio

D. Earthworm

**Answer: C**



**Watch Video Solution**

**214.** Pearl producing Indian species is

A. *Pinctada vulgaris*

B. *Pinctada indica*

C. *Ostrea indica*

D. *Ostrea vulgaris*

**Answer: A**



**Watch Video Solution**

**215.** Closed circulatory system occurs in

A. Snail

B. Cockroach

C. Cuttle fish



D. All of these

**Answer: C**



**Watch Video Solution**

**216.** Trochophore larve occurs in

A. Annelida and Porifera

B. Coelenterata and Annelida

C. Mollusca and Coelenterata

D. Annelida and Mollusca

**Answer: D**



**Watch Video Solution**

**217. Whose secretion forms the pearl?**

- A. Prismatic layer
- B. Columnar epithelial cells of mantle
- C. Ciliated epithelial cells of mantle
- D. Connective tissue of mantle

**Answer: B**



Watch Video Solution

**218.** Eyes of pila/molluscs occur over

- A. Pseudopodia
- B. Ommatophores
- C. Cephalic tentacles
- D. Both 2) and 3)

**Answer: B**



Watch Video Solution

**219.** Which of the following have eye structure nearest to that of vertebrates?

A. Insecta

B. Polychaeta

C. Cephalopoda

D. Crustacea

**Answer: C**



**Watch Video Solution**

**220.** Ammonites fossil shell remains of

A. pelecypods

B. cephalopods

C. gastropods

D. scaphopods

**Answer: B**



**Watch Video Solution**

**221.** Glochidium and Veliger both are the larval forms of

A. Pila

B. Nereis

C. Asterias

D. Bivalves

**Answer: D**



**Watch Video Solution**

222. Asymmetry develops due to torsion in mollusc

A. Octopus

B. Pila

C. Teredo

D. Dentallium

**Answer: B**



**Watch Video Solution**

**223.** The devil fish and sea hare are

A. Molluscs

B. Crustaceans

C. Coelenterates

D. Marine fish and mammal

**Answer: D**



**Watch Video Solution**



**224.** Gill is monopectinate in

A. Unio

B. Chiton

C. Octopus

D. Pila

**Answer: A**



**Watch Video Solution**

**225.** In Star-fish which has dual function of locomotion and respiration?

A. Axial sinus

B. Ampullae

C. Tube feet

D. Tiedmann's body

**Answer: C**



**Watch Video Solution**

**226.** Automy is observed in

- A. feather star
- B. starfish
- C. sea cucumber
- D. both 1) and 2)

**Answer: D**



**Watch Video Solution**

227. Development of blastopore into anus is seen in

A. Antedon

B. Octopus

C. Hydra

D. Nereis

**Answer: A**



**Watch Video Solution**

**228.** Similarity between Echinoderms and Chordates is

- A. deuterostomatic: tube-with-a tube plan
- B. protostomatic, tube-within-a-tube plan
- C. water vascular system
- D. kidneys

**Answer: A**



**Watch Video Solution**

**229.** Aristotle lantern is

A. a fresh water echinoderm

B. a masticatory apparatus connected with digestive system in sea urchin

C. a seive plate connected with ambulacral system in sea water

D. an ancient Greak ship lantern shaped structuer connected with balancing system of sea lily.

**Answer: B**



**Watch Video Solution**

**230.** Madreporite or sieve plate is found in

- A. sea hares
- B. sea lemons
- C. star fishes
- D. sea lions

**Answer: C**



Watch Video Solution

**231.** In which of the echinoderm, the arms, spines and pedicellaria are absent?

A. Sea cucumber

B. Sea lily

C. Sea star

D. Sea urchin

**Answer: A**





**232.** Chief excretory matter in echinoderms is

A. ammonia

B. urea

C. uric acid

D. amino acid

**Answer: A**



**233.** In echinoderms skeleton is

A. calcareous

B. chitinous

C. siliceous

D. tunicin made

**Answer: A**



**Watch Video Solution**

**234.** Water vascular system is originated from

A. ectoderm

B. mesoderm

C. endoderm

D. both 1) and 3)

**Answer: C**



**Watch Video Solution**

**235.** Cuvierian organs are found in

A. Asterias

B. Holothuria

C. Echinus

D. Antedon

**Answer: B**



**Watch Video Solution**

**236.** Internal endoskeleton of starfish is made up of calcareous plates called ossicles. Ossicles are derived from

- A. ectoderm
- B. mesoderm
- C. endoderm
- D. both 1) and 3)

**Answer: B**



**Watch Video Solution**

**237.** Anus is absent in

A. Antedon

B. Ophiothrix

C. Holothuria

D. Echinus

**Answer: A**



**Watch Video Solution**

**238.** Pedicellaries are absent in

- A. Ophiothrix, holothuria, Antedon
- B. Echinus, Clypeaster, Echinocardium
- C. Pentaceros, Asterias, Astropecten
- D. Both 2) and 3)

**Answer: A**



**Watch Video Solution**

**239.** Spines are absent in

A. Star fish

B. sea urchin

C. Brittle star

D. Sea cucumber and feather star

**Answer: D**



**Watch Video Solution**



**240.** Which one is the common ancestral larval form of echinoderms, hemichordates and chordates ?

A. Tornaria

B. Bipinnaria

C. Dipleurula

D. Trochophore

**Answer: C**



**Watch Video Solution**

**241.** Evisceration is found in

A. Echinodermata

B. Annelida

C. Coelenterata

D. Chordata

**Answer: A**



**Watch Video Solution**

242. Deuterostomate and enterocoelomate invertebrate is

A. Pila

B. Ascaris

C. Aphrodite

D. Asterias

**Answer: D**



**Watch Video Solution**

**243.** What is correct?

A. Blue-green alga is a kind of fungus.

B. Sea Horse is related to Dolphin.

C. Maiden Hair Tree is an angiosperm.

D. Sea Lily is an echinoderm

**Answer: D**



**Watch Video Solution**

**244.** Diagnostic character of the phylum Echinodermata is the presence of

- A. spiny skin
- B. pedicellariae
- C. water vascular system
- D. All of these

**Answer: D**



**Watch Video Solution**

**245.** It can regenerate entire alimentary canal

A. Fish

B. Bird

C. Amphibians

D. Sea cucumber

**Answer: D**



**Watch Video Solution**

**246.** Find the odd example

A. Sea fan

B. Sea lily

C. sea urchin

D. sea cucumber

**Answer: A**



**Watch Video Solution**

**247.** The radial symmetry is observed in

I. Platyhelminthes

II. Coelenterates

III. Aschelminthes

IV. Annelids

V. Echinoderms

The correct statements are

- A. ii and v only
- B. I,ii,iii and v only
- C. ii, iii and I only
- D. I, iii and v only

**Answer: a**



**Watch Video Solution**



**248.** In which of the following phyla, the adult shows radial symmetry while the larva has bilateral symmetry?

A. Annelids

B. Arthropods

C. Molluscs

D. Echinoderms

**Answer: D**



**Watch Video Solution**

**249.** Who had given the hemichordata the status of an independent invertebrate phylum?

- A. Vander horst
- B. Dawydoff, Marcus
- C. Hayman
- D. All of these

**Answer: D**



**Watch Video Solution**

**250.** Body of Balanoglossus is divisible into

A. head, neck, thorax and abdomen

B. head, trunk and tail

C. proboscis, collar and tail

D. proboscis, collar and trunk.

**Answer: D**



**Watch Video Solution**

**251.** In Balanoglossus, the mouth is present

- A. at the tip of proboscis
- B. in between the proboscis and collar
- C. in the collar
- D. in the trunk

**Answer: B**



**Watch Video Solution**

**252.** Stomochord is a hollow outgrowth which arises from the roof of the buccal cavity. It is present in

- A. Chordata
- B. Cephalochordata
- C. Urochordata
- D. Hemichordata.

**Answer: D**



**Watch Video Solution**

**253.** Hemichordates have pharyngeal gill slits which are

- A. lateral in position
- B. dorsal in position
- C. ventral in position
- D. none of the above

**Answer: B**



**Watch Video Solution**

**254.** Epidermis of Balanoglossus consists of

- A. a single layer of cells
- B. many layers of cells
- C. two layers of cells
- D. three layers of cells.

**Answer: A**



**Watch Video Solution**

**255.** Balanoglossus has

A. red blood

B. yellow blood

C. blue blood

D. colourless blood

**Answer: D**



**Watch Video Solution**

**256.** Excretory organ of Balanoglossus is

A. kidney



B. body wall

C. glomerulus

D. gill

**Answer: C**



**Watch Video Solution**

**257.** Respiratory pigment in Balanoglossus is

A. haemocyanin

B. haemoglobin

C. chlorocruorin

D. none of these

**Answer: D**



**Watch Video Solution**

**258.** Tornaria, the larva of Balanoglossus which resembles with bipinnaria larva was first described by

A. J.Muller

B. Weismann

C. Hugo de Vries

D. Singer

**Answer: A**



**Watch Video Solution**

**259.** Hemichordates resembles annelids in

A. body form and burrowing habit

B. circulatory system

C. larva form

D. body form, burrowing habit, circulatory system and occurrence of a free swimming larva

**Answer: D**



**Watch Video Solution**

**260.** Echinoderms, hemichordates and chordates have a

A. different ancestral stock

B. common ancestral stock

C. similar nervous system

D. common external characters.

**Answer: B**



**Watch Video Solution**

**261.** Blood vascular system in hemichordate is

A. open

B. reduced

C. closed

D. absent

**Answer: A**



**Watch Video Solution**

**262.** Balanoglossus possesses

A. Dorsal nerve cord

B. Ventral nerve cord

C. Both 1) and 2)

D. Spinal cord

**Answer: C**



**Watch Video Solution**

**263.** Respiration occurs in Balanoglossus by

A. gill slits

B. general body surface

C. book gills

D. 1) and 2)

**Answer: D**



**Watch Video Solution**

**264.** Asexual reproduction occurs in Hemichordata by

A. Fragmentation

B. budding

C. fission



D. All the above

**Answer: D**



**Watch Video Solution**

**265.** Proboscis gland in Balanoglossus is associated with

A. digestion

B. respiration

C. circulation

D. excretion

**Answer: D**



**Watch Video Solution**

**266.** Connecting link between chordates and non-chordates is

A. Peripatus

B. Balanoglossus

C. Sphenodon

D. Tachyglossus

**Answer: B**



**Watch Video Solution**

**267.** Which of the following animals belongs to phylum Coelenterata?

A. Sea horse

B. Sea hare

C. Sea pen

D. Sea cucumber

**Answer: C**



**Watch Video Solution**

**268.** Which of the following is not correctly matched?

A. Sycon-Canal system

B. Starfish -Radial Symmetry

C. Ascaris - Flame cell

## D. Prawn -Haemocoel

**Answer: C**



**Watch Video Solution**

**269.** Which of the following statements are incorrect?

(i) Parapodia are lateral appendages in arthropods used for swimming.

(ii) Radula in molluscs are structures involved in excretion.

(iii) Aschelminthes are dioecious.

(iv) Echinoderm adults show radial symmetry.

(v) Ctenophorans are diploblastic

A. I and II

B. I and III

C. I, IV and V

D. III and V

**Answer: A**



**Watch Video Solution**

270. Which of the following are most intelligent invertebrates

A. Insects

B. Birds

C. Angiosperms

D. Fungi

**Answer: A**



**Watch Video Solution**

271. Which of the following are most intelligent invertebrates.

A. Crustaceans such as cray fish and hermit crab

B. Arachnidians like scorpions and spiders

C. Cephalopods such as squids and octopus

D. Echinoderms like starfish and sea urchin

**Answer: C**





272. Which one of the following species of bees is used for the commercial production of honey?

A. *Apis dorsata*

B. *Apis indica*

C. *Apis florea*

D. *Apis mellifera*

**Answer: D**



[Watch Video Solution](#)

273. Munga silk worm feeds on

A. Shorea

B. Terminalia

C. Machilus

D. Morus

**Answer: C**



[Watch Video Solution](#)

274. Which one of the following is a correct match

A. Filariasis- *Taenia solium*

B. Encephalitis - *Culex vishnui*

C. Malaria -*Phlebotomus* sp.

D. kala-azar - *Anopheles stephensi*

**Answer: B**



**Watch Video Solution**

275. Which one of the following genus of insects prefer to breed in clean water and their larvae lie parallel to the surface of water

A. Anopheles

B. Culex

C. Aedes

D. Phlebotomus

**Answer: A**



**Watch Video Solution**

**276.** Which one of the following animal possesses gaint chromosome?

A. Drosophila

B. Mouse

C. Branchiomyces

D. Xenopsylia

**Answer: A**



**Watch Video Solution**

277. In Prawn, excretion is carried out by

- A. Protonephridia
- B. Malphigian tubules
- C. Mushroom gland
- D. Green gland

**Answer: D**



**Watch Video Solution**

**278.** An example of animals in which mesoderm occurs as scattered pouches between ectoderm and endoderm is

A. Filaria worm

B. Tapeworm

C. Earthworm

D. Lancelet

**Answer: A**



**Watch Video Solution**

**279.** Which is the only phylum in the animal kingdom without any nerve cell ?

A. Porifera

B. Coelenterata

C. Annelida

D. Nematoda

**Answer: A**



**Watch Video Solution**



**280.** In most simple type of canal system of porifera, water flows through which one of the following ways

A. Ostia → Spongocoel → Osculum → Exterior

B. Spongocoel → Ostia → Osculum → Exterior

C. Osculum → Spongocoel → Ostia → Exterior

D. Osculum → Ostia → Spongocoel →

Exterior

**Answer: C**



**Watch Video Solution**

**281.** Which of the following is concerned with asexual reproduction?

A. Gemmuies

B. Gametes

C. Gonads

D. Genitalia

**Answer: A**



**Watch Video Solution**

**282.** Which one of the following the genus name, its two characters and its class/phylum

are correctly matched?

Genus	Two characters	Class/ phylum
(1) <i>Salamandra</i>	(i) A tympanum represents ear (ii) Fertilization is external	Amphibia
(2) <i>Pteropus</i>	(i) Skin possesses hair (ii) Oviparous	Mammalia
(3) <i>Aurelia</i>	(i) Cnidoblast (iii) Organ level of organization	Coelenterata
(4) <i>Ascaris</i>	(i) Body segmented (ii) Males and females distinct	Annelida



Watch Video Solution

**283.** Which group of animals belong to the same phylum ?

A. Prawn, Scorpion, Locusta

B. Sponge, Sea anemone, Starfish

C. Malaria parasite, Amoeba, Mosquito

D. Earthworm, Pinworm, Tapeworm

**Answer: D**



**Watch Video Solution**

**284.** Which of the following are correctly matched with respect to their taxonomic classification?

A. House fly, butterfly, tsetsefly, silverfish-

Insecta

B. Spiny anteater, sea urchin, sea

cucumber-Echinodermata

C. Flying fish, cuttlefish, silverfish-Pisces

D. Centipede, millipede, spider, scorpion-

Insecta

**Answer: A**



**Watch Video Solution**

**285.** Which one of the following are correctly matched with respect to their taxonomic classification?

A. House fly, butterfly, tse tsefly, silverfish-

Insecta

B. Spiny anteater, sea urchin, sea

cucumber-Echinodermata

C. Flying fish, cuttlefish, silverfish-Pisces

D. Centipede, millipede, spider, scorpion-

Insecta

**Answer: A**



**Watch Video Solution**

**286.** Which of the following characteristics is mainly responsible for diversification of insects of land



A. Bialteral symmetry

B. Exoskeleton

C. Eyes

D. Segmentation

**Answer: B**



**Watch Video Solution**

**287.** Body having meshwork of cell, internal cavities lined with food filtering flagellated

cells and indirect development are the characteristics of phylum

A. Coelenterata

B. Porifera

C. Mollusca

D. Protozoa

**Answer: B**



**Watch Video Solution**

**288.** Which of the following features is not present in the in the phylum Arthropoda

A. Metameric -Segmentation

B. Parapodia

C. Jointed Appendages

D. Chitinous exoskeleton

**Answer: B**



**Watch Video Solution**

**289.** In case of poriferans, the spongocoel is lined with flagellated cells called

A. ostia

B. oscula

C. choanocytes

D. mesencymal cells

**Answer: C**



**Watch Video Solution**

**290.** An important characteristic that hemichordates share with chordates is

- A. absence of notochord
- B. ventral tubular nerve cord
- C. pharynx with gill slits
- D. pharynx without gill slits

**Answer: C**



**Watch Video Solution**

**291.** Which of the following animals does not undergo metamorphosis

A. Starfish

B. Moth

C. Tunicate

D. Earthworm

**Answer: D**



**Watch Video Solution**

## Assertion And Reason

1. [A] : The signet ring trophozoite of malarial parasite ingests major part of cytoplasm of erythrocytes and form a food vacuole into which it secretes digestive enzymes .

[R] : The enzymes cause breakdown of Haemoglobin into hematic and protein contents .

A. If both A and R are true and R is the correct explanation of A

B. If both A and R are true but R is not the correct explanation of A

C. If A is true and R is false

D. If both A and R are false

**Answer: D**



**Watch Video Solution**

2. [A] : Protozoans have no physiological division of labour .



[R] : They have a well developed cell , tissue and tissue organ system .

A. If both A and R are true and R is the correct explanation of A

B. If both A and R are true but R is not the correct explanation of A

C. If A is true and R is false

D. If both A and R are false

**Answer: D**



**Watch Video Solution**

3. [A] : Endomixis in Paramecium involves total internal nuclear reorganisation within a single individual .

[R] : It takes place in the absence of conjugation.

A. If both A and R are true and R is the correct explanation of A

B. If both A and R are true but R is not the correct explanation of A

C. If A is true and R is false

D. If both A and R are false

**Answer: A**



**Watch Video Solution**

4. [A] : Sponges are primitive multicellular animals that probably evolved a multicellular structure independently of other animals .

[R] : Sponges are stationary animals and

remain fixed to substratum while water passes over them .

A. If both A and R are true and R is the correct explanation of A

B. If both A and R are true but R is not the correct explanation of A

C. If A is true and R is false

D. If both A and R are false

**Answer: B**



**Watch Video Solution**

5. [A] : Annelids , Arthropods and mollusks are protostomial coelomates .

[R] : They all show bilateral symmetry , tube with in tube body pland and three germ layer derivations.

A. If both A and R are true and R is the correct explanation of A

B. If both A and R are true but R is not the correct explanation of A

C. If A is true and R is false

D. If both A and R are false

**Answer: B**



**Watch Video Solution**

6. [A] : The body cavity of earthworm is a true coelem .

[R] : It is lined by peritoneum derived from ectoderm .

- A. If both A and R are true and R is the correct explanation of A
- B. If both A and R are true but R is not the correct explanation of A
- C. If A is true and R is false
- D. If both A and R are false

**Answer:**



**Watch Video Solution**

7. [A] : Pearl is formed when a foreign particle gets in between shell and mantle .

[R] : The inner nacreous layer called mother of pearl is formed by layers of  $CaCO_3$  and concholin.

A. If both A and R are true and R is the correct explanation of A

B. If both A and R are true but R is not the correct explanation of A

C. If A is true and R is false



D. If both A and R are false

**Answer:**



**Watch Video Solution**

**8. [A] :** Fasciola is hermaphrodite .

[R] : Gonads are well developed and the male and female genital ducts open into a common genital atrium .

A. If both A and R are true and R is the correct explanation of A

B. If both A and R are true but R is not the correct explanation of A

C. If A is true and R is false

D. If both A and R are false

**Answer:**



**Watch Video Solution**

9. [A] : There are 10 tidemanns bodies in ambulacral system of echinoderms .

[R] : They are enzyme destroying bodies and act as lymphatic glands .

A. If both A and R are true and R is the correct explanation of A

B. If both A and R are true but R is not the correct explanation of A

C. If A is true and R is false

D. If both A and R are false

**Answer:**



**Watch Video Solution**

**10. [A] :** Termites and ants are social insects .

**[R] :** They make fungus gardens in their nests .

A. If both A and R are true and R is the correct explanation of A

B. If both A and R are true but R is not the correct explanation of A

C. If A is true and R is false

D. If both A and R are false

**Answer:**



**Watch Video Solution**

**11. Assertion(A):** In sponges, archaeocytes are totipotent.

**Reason( R):** They give rise to all types of amoebocytes and are self replicating.

A. If both A and R are true and R is the correct explanation of A

B. If both A and R are true but R is not the correct explanation of A

C. If A is true and R is false

D. If both A and R are false

**Answer:**



**Watch Video Solution**

12. [A] : The honey is a vital food for animals including man .

[R] : The enzyme in saliva of honey bees converts complex sugar of nector of flowers into simple sugar of honey .

A. If both A and R are true and R is the correct explanation of A

B. If both A and R are true but R is not the correct explanation of A

C. If A is true and R is false

D. If both A and R are false

**Answer:**



**Watch Video Solution**

**13. [A] :** Leaches secrete hirudin from their salivary glands .

**[R] :** Hirudin is anticoagulating agent .

A. If both A and R are true and R is the correct explanation of A



B. If both A and R are true but R is not the correct explanation of A

C. If A is true and R is false

D. If both A and R are false

**Answer:**



**Watch Video Solution**

**14. [A] :** All invertebrates can keep their body temperature constant all the time .

**[R] :** Amoeba can also keep its body

temperature constant as it has well-defined blood vascular system .

A. If both A and R are true and R is the correct explanation of A

B. If both A and R are true but R is not the correct explanation of A

C. If A is true and R is false

D. If both A and R are false

**Answer:**



**Watch Video Solution**

**15. [A]** : In *Taenia solium* , bladder worm is also known as cysticercus .

**[R]** : Bladder worm is characterised by a large vesicle and one scolex .

A. If both A and R are true and R is the correct explanation of A

B. If both A and R are true but R is not the correct explanation of A

C. If A is true and R is false

D. If both A and R are false

**Answer:**



**Watch Video Solution**

**16. [A] :** Earthworm obtain oxygen for respiration through moist skin . They do not have respiratory organs .

**[R] :** They are burrowing in habit .

A. If both A and R are true and R is the correct explanation of A

B. If both A and R are true but R is not the correct explanation of A

C. If A is true and R is false

D. If both A and R are false

**Answer:**



**Watch Video Solution**

17. [A] : Presence of alimentary canal would not have suited the mode of life of tapeworm .

[R] : It would have rendered impossible for the process of parasitism

A. If both A and R are true and R is the correct explanation of A

B. If both A and R are true but R is not the correct explanation of A

C. If A is true and R is false

D. If both A and R are false

**Answer:**



**Watch Video Solution**

**18. [A]:** Development in cockroach is termed as retrogressive metamorphosis .

**[R] :** The young ones resemble adults in all essential respects .

A. If both A and R are true and R is the correct explanation of A

B. If both A and R are true but R is not the correct explanation of A

C. If A is true and R is false

D. If both A and R are false

**Answer:**



**Watch Video Solution**

**19. [A] :** All the gills of Palaemon are phyllobranchs .

**[R] :** Each gill consists of two rows of leaf like



rhomboidal gill-plates arranged like the leaves of a book .

A. If both A and R are true and R is the correct explanation of A

B. If both A and R are true but R is not the correct explanation of A

C. If A is true and R is false

D. If both A and R are false

**Answer:**



**Watch Video Solution**

20. [A] : Renal-sac of Prawn functions in same manner as vertebrate kidney .

[R] : Renal-sac is large , thin-walled sac lying above the cardiac stomach .

A. If both A and R are true and R is the correct explanation of A

B. If both A and R are true but R is not the correct explanation of A

C. If A is true and R is false

D. If both A and R are false

**Answer:**



**Watch Video Solution**

21. [A] : Pila is adopted to lead an amphibious life .

[R] : It is provided with a pulmonary sac for aerial respiration and a gill or ctenidium for aquatic respiration .

A. If both A and R are true and R is the correct explanation of A

B. If both A and R are true but R is not the correct explanation of A

C. If A is true and R is false

D. If both A and R are false

**Answer:**



**Watch Video Solution**

22. [A] : Chordates have poor regeneration power while non-chordates have good regeneration power .

[R] : Non-chordates have asexual reproduction , so they have good regeneration power .

A. If both A and R are true and R is the correct explanation of A

B. If both A and R are true but R is not the correct explanation of A

C. If A is true and R is false

D. If both A and R are false

**Answer:**



**Watch Video Solution**

**23. [A] :** In lower invertebrates the digestion is intracellular while in higher forms it is extracellular .

**[R] :** Extracellular digestion is highly evolved process , it takes place in gut .

A. If both A and R are true and R is the correct explanation of A

B. If both A and R are true but R is not the correct explanation of A

C. If A is true and R is false

D. If both A and R are false

**Answer:**



**Watch Video Solution**

24. [A] : Chordates have an oxygen carrying pigment called haemoglobin . It is always present in red blood corpuscles .

[R] : Non-chordates have either no haemoglobin or if it is present , it is present in plasma . Non-chordates require very little oxygen as compared to chordates for their body functions.

A. If both A and R are true and R is the correct explanation of A



B. If both A and R are true but R is not the correct explanation of A

C. If A is true and R is false

D. If both A and R are false

**Answer:**



**Watch Video Solution**

**25. [A] :** Huxley comments that Birds are glorified reptiles .

[R] : Birds possess higher grades of intelligence and behaviour practically unknown in reptiles .

A. If both A and R are true and R is the correct explanation of A

B. If both A and R are true but R is not the correct explanation of A

C. If A is true and R is false

D. If both A and R are false

**Answer:**



**Watch Video Solution**

**26.** [A] : Birds excrete uric acid .

[R] : Birds do not have a urinary bladder .

A. If both A and R are true and R is the correct explanation of A

B. If both A and R are true but R is not the correct explanation of A

C. If A is true and R is false

D. If both A and R are false

**Answer:**



**Watch Video Solution**

27. [A] : In elastic lungs of birds are supplemented by remarkable system of air sacs .

[R] : Air sacs function in storage of food .

A. If both A and R are true and R is the correct explanation of A

B. If both A and R are true but R is not the correct explanation of A

C. If A is true and R is false

D. If both A and R are false

**Answer:**



**Watch Video Solution**

**28. [A] :** Sphenodon is referred to as a living fossil .

**[R] :** It has retained many primitive

characteristics of fossil or stem reptiles belonging to permain period.

A. If both A and R are true and R is the correct explanation of A

B. If both A and R are true but R is not the correct explanation of A

C. If A is true and R is false

D. If both A and R are false

**Answer:**



**Watch Video Solution**

29. [A] : In reptiles , lizards show autotomy .

[R] : Tail of most lizards is easily borken off when threatened or seized by a predator .

A. If both A and R are true and R is the correct explanation of A

B. If both A and R are true but R is not the correct explanation of A

C. If A is true and R is false

D. If both A and R are false

**Answer:**



**Watch Video Solution**

**30. [A] :** Heloderma is called beaded lizard .

**[R] :** Its scales resemble beads .

A. If both A and R are true and R is the correct explanation of A

B. If both A and R are true but R is not the correct explanation of A



C. If A is true and R is false

D. If both A and R are false

**Answer:**



**Watch Video Solution**

**31. Assertion:** Kraits are poisonous snakes.

**Reason:** Belly scales are small and continuous with dorsal in poisonous snakes.

- A. If both A and R are true and R is the correct explanation of A
- B. If both A and R are true but R is not the correct explanation of A
- C. If A is true and R is false
- D. If both A and R are false

**Answer:**



**Watch Video Solution**

**32. [A] :** In the adult bird , only the left ovary is well developed .

**[R] :** A single ovary results in loss of weight as well as in decreasing the number of eggs produced .

A. If both A and R are true and R is the correct explanation of A

B. If both A and R are true but R is not the correct explanation of A

C. If A is true and R is false

D. If both A and R are false

**Answer:**



**Watch Video Solution**

**33. [A] :** Rabbit is classified as mammal .

**[R] :** Rabbit possesses mammary glands ,  
pectan and teeth .

A. If both A and R are true and R is the  
correct explanation of A

B. If both A and R are true but R is not the correct explanation of A

C. If A is true and R is false

D. If both A and R are false

**Answer:**



**Watch Video Solution**

**34. [A] :** Origin of mammals is polyphyletic .

**[R] :** Mammals are derived from atleast two

triassic reptilian stocks , Cynodonts and Ictidosaur .

A. If both A and R are true and R is the correct explanation of A

B. If both A and R are true but R is not the correct explanation of A

C. If A is true and R is false

D. If both A and R are false

**Answer:**



**Watch Video Solution**

**35. [A] :** The Ascidian tadpole larva possess all the basic chordate characters.

**[R] :** Both urochordates and other chordates have originated from a common ancestor .

A. If both A and R are true and R is the correct explanation of A

B. If both A and R are true but R is not the correct explanation of A

C. If A is true and R is false

D. If both A and R are false

**Answer:**



**Watch Video Solution**

**36. [A] :** Tail wagging dance is performed for short distances . It conveys both the distance and speed of the scout bees .

**[R] :** Foraging bees keep touching the scout bees through dance to get the information mainly by olfactory stimulation .



- A. If both A and R are true and R is the correct explanation of A
- B. If both A and R are true but R is not the correct explanation of A
- C. If A is true and R is false
- D. If both A and R are false

**Answer:**



**Watch Video Solution**

37. [A] : A pair of coxal glands are found in each side of metasoma of scorpion .

[R] : The coxal glands of scorpion are analogous with the green glands of crustacea and function as excretory organs .

A. If both A and R are true and R is the correct explanation of A

B. If both A and R are true but R is not the correct explanation of A

C. If A is true and R is false

D. If both A and R are false

**Answer:**



**Watch Video Solution**

**38. [A] :** Honey bees are social insects known for producing honey and bees wax , and for living in very highly organized colonies . These colonies have hexagonal chambers called cells made up of bees wax .

**[R] :** Cells are used for storing honey and

pollen breeds , as well as for rearing the brood.

A. If both A and R are true and R is the correct explanation of A

B. If both A and R are true but R is not the correct explanation of A

C. If A is true and R is false

D. If both A and R are false

**Answer:**



**Watch Video Solution**

**39.** Assertion : Cold blooded animals do not have fat layer.

Reason : Cold blooded animals use their fat for metabolic process during hibernation

A. If both A and R are true and R is the correct explanation of A

B. If both A and R are true but R is not the correct explanation of A

C. If A is true and R is false

D. If both A and R are false

**Answer:**



**Watch Video Solution**

**40. [A] :** Neoteny is the retention of larval form throughout the life .

**[R] :** It occurs in Axoltol larva of Ambystoma .

A. If both A and R are true and R is the correct explanation of A

B. If both A and R are true but R is not the correct explanation of A

C. If A is true and R is false

D. If both A and R are false

**Answer:**



**Watch Video Solution**

**41. [A] :** In Parthenogenesis , fertilized egg is stimulated to divide .

**[R] :** It is a type of reproduction through which

animals are not able to eliminate non adaptive characters and sterility.

A. If both A and R are true and R is the correct explanation of A

B. If both A and R are true but R is not the correct explanation of A

C. If A is true and R is false

D. If both A and R are false

**Answer:**



**Watch Video Solution**



**42.** [A] : Protozoans have no physiological division of labour .

[R] : They have a well developed cell , tissue and tissue organ system .

A. If both A and R are true and R is the correct explanation of A

B. If both A and R are true but R is not the correct explanation of A

C. If A is true and R is false

D. If both A and R are false

**Answer:**



**Watch Video Solution**

**43. [A] :** Visceral leishmaniasis is caused by the sand flies .

[R] : When the sand flies bite , secondary infection occurs .

A. If both A and R are true and R is the correct explanation of A

B. If both A and R are true but R is not the correct explanation of A

C. If A is true and R is false

D. If both A and R are false

**Answer:**



**Watch Video Solution**

**44.** [A] : Many desert mammals cool the exhaled air in their noses , before it is expelled out through nostrills .

[R] : The moisture condensation in the nose and is not lost as water vapours along with the exhaled air .

A. If both A and R are true and R is the correct explanation of A

B. If both A and R are true but R is not the correct explanation of A

C. If A is true and R is false

D. If both A and R are false

**Answer:**



**Watch Video Solution**

**45. [A] :** Amoeba is regarded as the lowest form of animals.

**[R] :** Body of amoeba consists of a mere mass of protoplasm and resembles a blob of jelly

A. If both A and R are true and R is the correct explanation of A

B. If both A and R are true but R is not the correct explanation of A

C. If A is true and R is false

D. If both A and R are false

**Answer:**



**Watch Video Solution**

**46. [A] :** In *Taenia solium* , bladder worm is also known as cysticercus .

**[R] :** Bladder worm is characterised by a large vesicle and one scolex .

A. If both A and R are true and R is the correct explanation of A

B. If both A and R are true but R is not the correct explanation of A

C. If A is true and R is false

D. If both A and R are false

**Answer:**



**Watch Video Solution**

**47. Assertion :** Bats and whales are classified as mammals

**Reason :** Bats and whales have four-chambered heart

A. If both A and R are true and R is the correct explanation of A



B. If both A and R are true but R is not the correct explanation of A

C. If A is true and R is false

D. If both A and R are false

**Answer:**



**Watch Video Solution**

**48. [A] :** The coelomic cavity of Leech is mostly filled with botryoidal tissue formed of branching tubular cells .

[R] : Hence the coelomic cavity is reduced to four longitudinal channels and their branches

.

A. If both A and R are true and R is the correct explanation of A

B. If both A and R are true but R is not the correct explanation of A

C. If A is true and R is false

D. If both A and R are false

**Answer:**





Watch Video Solution

**49. [A]** : When a foreign object , such as a sand grain gets in between the shell and mantle , it results in the formation of a pearl .

**[R]** : The inner nacreous layer of irridiscent nacre is called the mother of pearl which is formed by many thin and alternating layers of calcium carbonate and concholin .

A. If both A and R are true and R is the correct explanation of A

B. If both A and R are true but R is not the correct explanation of A

C. If A is true and R is false

D. If both A and R are false

**Answer:**



**Watch Video Solution**

50. [A] : Tail wagging dance is performed for short distances . It conveys both the distance and speed of the scout bees .

[R] : Foraging bees keep touching the scout bees through dance to get the information mainly by olfactory stimulation .

A. If both A and R are true and R is the correct explanation of A

B. If both A and R are true but R is not the correct explanation of A

C. If A is true and R is false

D. If both A and R are false

**Answer:**





Watch Video Solution

**51. Assertion:** The duck-billed platypus and the spiny anteater, both are egg-laying animals yet they are grouped under mammals.

**Reason:** Both of them have seven cervical vertebrae and 12 pairs of cranial nerves.

A. If both A and R are true and R is the correct explanation of A

B. If both A and R are true but R is not the correct explanation of A

C. If A is true and R is false

D. If both A and R are false

**Answer:**



**Watch Video Solution**