



BIOLOGY

BOOKS - TRUEMAN BIOLOGY

REPRODUCTION

Section A

1. The turkey usually produces female for several generations. Name the process.



Watch Video Solution

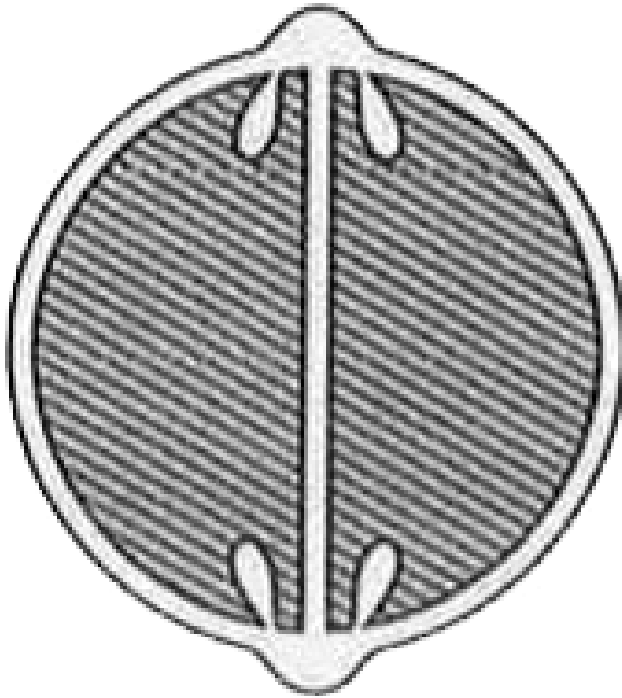
2. In the whiptail lizards only females are born generation after generation. There are no males. How is this possible ?



Watch Video Solution

3. In the following figure of a fruit, label the part which is protective in function and that

which is responsible for producing new plants.



Watch Video Solution

4. After a successful in vitro fertilization, the fertilized egg begins to divide. Where is this egg transferred before it reaches the 8-cell stage and what is the technique named?



Watch Video Solution

5. Name the organization which developed the 'Saheli'



Watch Video Solution

6. Name the stage at which zona pellucida envelop disintegrates



Watch Video Solution

7. What is colostrum? How does colostrum provide protection against diseases to new born babies ?



Watch Video Solution

8. Why do internodal segments of sugarcane fail to propagate vegetatively even when they are in contact with dump soil?



Watch Video Solution

9. How can pollen grains of wheat and rice which tend to lose viability within 30 minutes of their release be made available months later for breeding programmes ?



Watch Video Solution

10. Mention two events that are inhibited by the intake of oral contraceptive pills to prevent pregnancy in humans.



Watch Video Solution

11. Why are non-albuminous (exalbuminous) seeds so called ?



Watch Video Solution

12. Name the part of flower that contributes to fruit formation in strawberry and guava respectively



Watch Video Solution

13. A bilobed, ditheous anther has 100 microspore mother cells per microsporangium. How many male gametophytes this anther can produce ?



Watch Video Solution

14. Why an anther with malfunctioning tapetum often fails to produce viable male gametophytes?



Watch Video Solution

15. Mention a characteristic feature and a function of zoospores in some algae.



Watch Video Solution

16. What are assured seed sets in pea plants?



Watch Video Solution

17. Name the type of flower in pea plant.



Watch Video Solution

18. Why do the pollen grains of Vallisneria have a mucilaginous covering ?



Watch Video Solution

19. Name the organism and the mode of reproduction represented in the diagram given below .



Watch Video Solution

20. Why do corn cobs have long tassels ?



Watch Video Solution

21. Mention the function of trophoblast in human embryo



Watch Video Solution

22. Mention two inherent characteristics of Amoeba and yeast that enable them to reproduce asexually



Watch Video Solution

23. Vegetative reproduction in potato is



Watch Video Solution

24. Give an example for organism exhibiting apomixis.



Watch Video Solution

25. Honey bee produces female individuals without fertilization. Name the process.



Watch Video Solution

26. When was family planning implemented in India?



Watch Video Solution

27. Cucurbits and papaya plants bear staminate and pistillate flowers. Mention the categories they are put under separately on the basis of the type of flowers they bear.



Watch Video Solution

28. Name the process of conversion of spermatid to sperm in human.



Watch Video Solution

29. The following statements describe the characters of wind-pollinated plants. Which one of these statements is incorrect ?

(i) The pollen grains are sticky

(ii) Stamens are well exposed

(iii) Flowers often have a single ovule



Watch Video Solution

30. Write the function of Nucleus of human sperm



Watch Video Solution

31. Amoeba reproduces by budding. The following statement is

True

False



Watch Video Solution

32. Name an alga that reproduces asexually through zoospores



Watch Video Solution

33. Name the phenomenon and one bird where the female gamete directly develops into a new organism.



Watch Video Solution

Section B

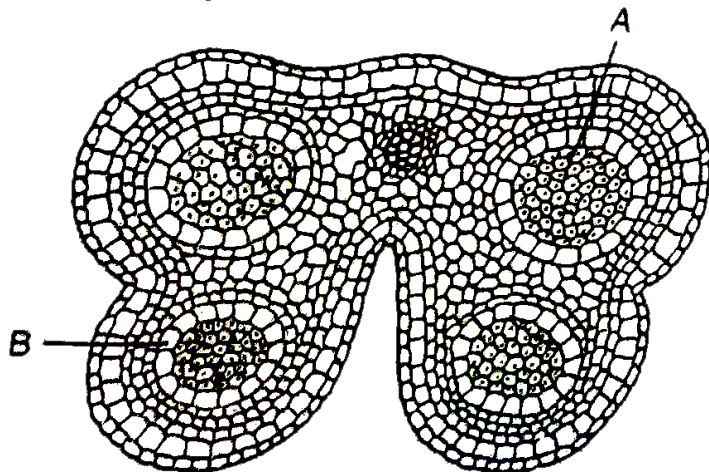
1. Identify the type of flower shown in A and B. Which out of the two will produce an

assured seed set ?



Watch Video Solution

2. In the T.S. of a mature anther given below, identify 'A' and 'B' and mention their function.



Watch Video Solution

3. In the table given below , select and enter one correct device out of the following : Oral pill, condom , Copper T , Saheli,Vasectomy,

Diaphragm, Tubectomy, Cervical cap

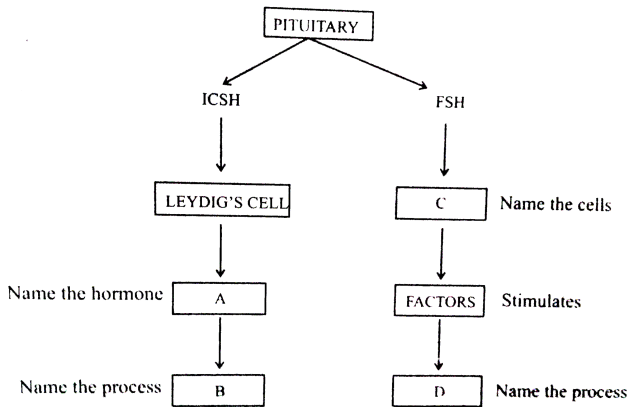
Method of birth control	Device
(a) Barrier	
(b) IUD	
(c) Surgical Technique	
(d) Administering Hormones	



[Watch Video Solution](#)

4. Given below is an incomplete flow chart showing influence of hormones on gametogenesis in males. Observe the flow chart carefully and fill in the blanks A,B,C and

D.



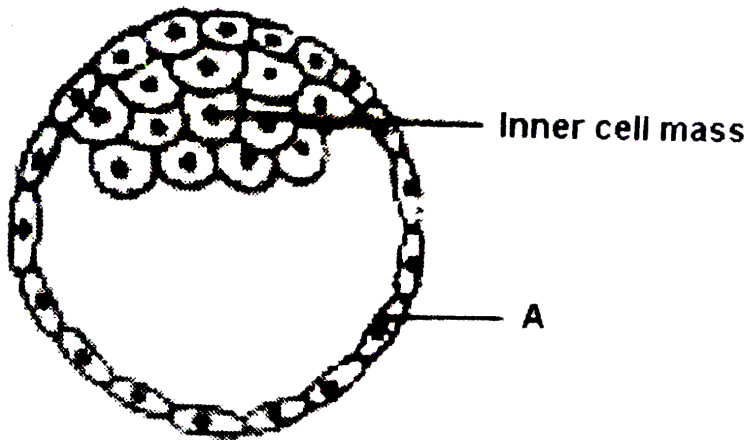
Watch Video Solution

5. Study the figure given below and answer the questions that follow :

(a) Name the stage of human embryo the figure represents.

(b) Identify 'A' in the figure and mention its function .

(c)Mention the fate of the inner cell mass after implantation in the uterus .



(d)Where are the stem cells located in this embryo ?



Watch Video Solution

6. Draw a vertical section of a maize grain and label (i) pericarp, (ii)scutellum, (iii)coleoptile, and (iv) radicle



Watch Video Solution

7. Why do some women used "Saheli" pills ?



Watch Video Solution

8. Mention the male gamete in plant. Where is it produced?



Watch Video Solution

9. Which part of the flower gives rise to an apple? What is the type of fruit produced in this case?



Watch Video Solution

10. Explain how geitonogamy is functionally similar to cross pollination and genetically similar to self pollination ?



Watch Video Solution

11. Name any two copper releasing Intra Devices (IUDs).List two reasons that make them effective contraceptives .



Watch Video Solution

12. If you squeeze a seed of orange you might observe many embryos of different sizes. How it possible ? Explain.



Watch Video Solution

13. Mention the hormones which function during menarch and menopause.



Watch Video Solution

14. Differentiate between major structural changes in the human ovary during the follicular and luteal phase of the menstrual cycle.



Watch Video Solution

15. Expand: ZIFT and IUT

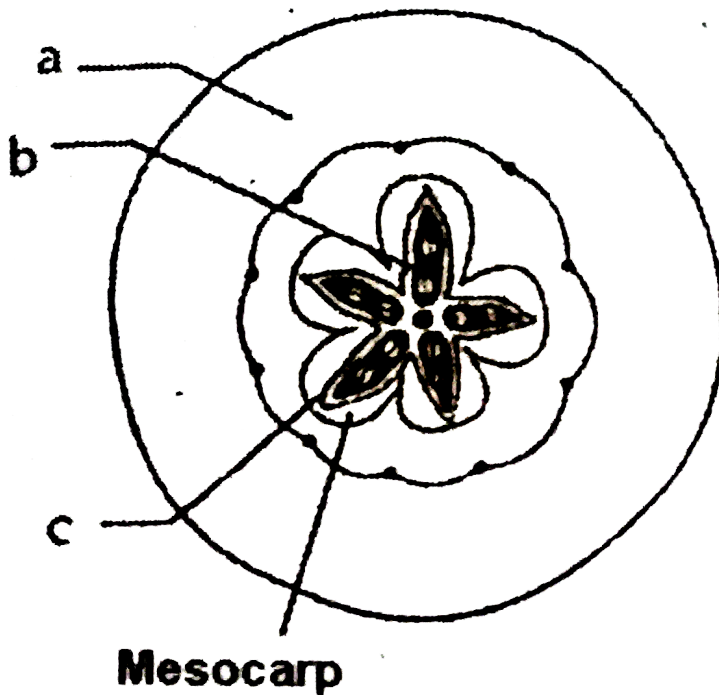


Watch Video Solution

16. (i) Given below is a T.S. of an apple. Identify

a, b and c

(ii) Why is an apple considered as a false fruit ?



Watch Video Solution

17. A fertilized egg is blue print of future development. Explain



Watch Video Solution

18. Describe the Lactational Amenorrhea method of birth control



Watch Video Solution

19. A moss plant produces a large number of antherozoids but relatively only a few egg cells. Why ?



Watch Video Solution

20. Mention the reasons for difference in ploidy of zygote and primary endosperm nucleus in an angiosperm.



Watch Video Solution

21. How many haploid nuclei and haploid cells are present in the female gametophyte of angiosperm?



Watch Video Solution

22. Placenta acts as an endocrine gland. Explain.



Watch Video Solution

23. The number of taxa exhibiting asexual reproduction is drastically reduced in higher plants(angiosperms) and higher animals (vertebrates) as compared with lower groups of plants and animals. Analyse the possible reasons for this situation.



Watch Video Solution

24. Draw the sketches of a zoospore and conidia. Mention two dissimilarities between

and atleast one feature common to both struture.



Watch Video Solution

25. Give below are the events that are observed in an artificial hybridization programme. Arrange them in the correct sequential order in which they are followed in the hybridisation programme.

(a) Re-bagging (b) Selection of parents (c)
Bagging (d) Dusting the pollen on stigma (e)

Emasculation (f) Collection of pollen from male parent.



Watch Video Solution

26. Why most of the zygotes in angiosperms divide only after certain amount of endosperm is formed?



Watch Video Solution

27. Corpus luteum in pregnancy has a long life. However, if fertilisation does not take place it remains active only for 10-12 days, Why?



Watch Video Solution

28. What are the events taking place in the ovary and uterus during follicular phase of the menstrual cycle.



Watch Video Solution

29. Explain: FSH and LH. Mention one function each. .



Watch Video Solution

30. The procedure of GIFT involves the transfer of female gamete to the fallopian tube. Can gametes be transferred to the uterus to achieve the same result? Explain.



Watch Video Solution

31. Briefly explain IVF and ET. What are the conditions in which these methods are advised?



Watch Video Solution

32. All reproductive tract infections RTIs are STDs, but all STDs are not RTIS. Justify with example.



Watch Video Solution

33. What do you understand by amniocentesis ? Why is there a statutory ban on this ? Give reason



Watch Video Solution

34. When and where do chorionic villi appear in humans ? State their function.



Watch Video Solution

35. (a) How does cleistogamy ensure autogamy?

(b) State one advantage and one disadvantage of cleistogamy to the plant.



Watch Video Solution

36. Explain the steps that ensure cross pollination in an autogamous flower.



Watch Video Solution

37. Name all the haploid cells present in an unfertilized mature embryo-sac of a flowering plant. Write the total number of cells in it.



Watch Video Solution

38. Differentiate between the two cells enclosed in a mature male gametophyte of an angiosperm.



Watch Video Solution

39. Name the hormones involved in the regulation of spermatogenesis.

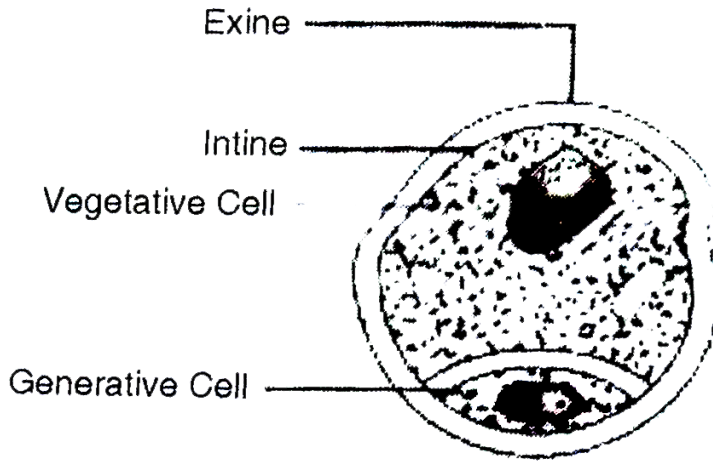


Watch Video Solution

Section C

1. Draw a labelled diagram of the sectional view of a mature pollen grain of angiosperms. Explain the function of generative cell and

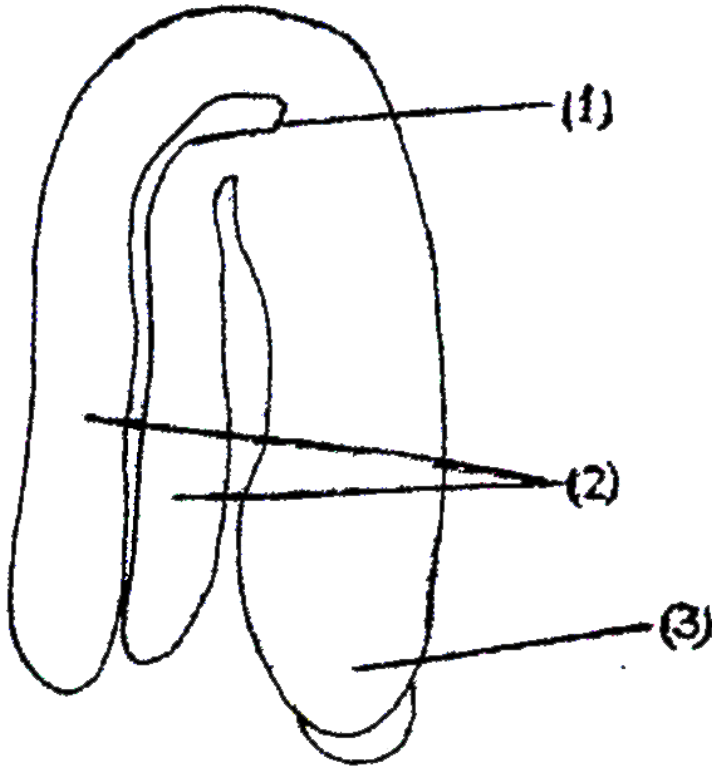
vegetative cell



Watch Video Solution

2. In the adjacent figure of a typical dicot embryo, label the parts (1),(2) and (3) . State

the function of each of the labelled part.



Watch Video Solution

3. (a) In which part of the human female reproductive system do the following events take place ?

I-Release of 1st polar body

II-Release of 2nd polar body

III-Fertilization

IV-Implantation

(b) From where do signals for parturition originate and what does maternal pituitary release for stimulating uterine contractions for child birth ?



Watch Video Solution

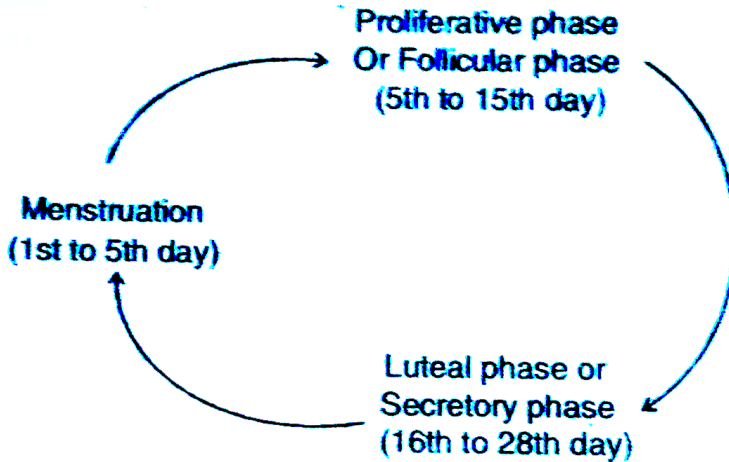
4. The events of the menstrual cycle are represented below. Answer the questions following the diagram.

(i) State the levels of FSH , LH and Progesterone simply by mentioning high or low , around 13th and 14th day and 21st to 23 rd day .

(ii) In which of the above mentioned phases does the egg travel to the fallopian tube ?

(iii) Why is there no menstruation upon

fertilization ?



Watch Video Solution

5. Draw a labelled diagram of a sectional view of human seminiferous tubule.

(b) Differentiate between gametogenesis in human males and females on the basis of

(i) time of initiation of the process.

(ii) Products formed at the end of the process.



Watch Video Solution

6. With the help of labelled diagrams, depict the stages of a microspore maturing into a pollen grain.



Watch Video Solution

7. In an angiosperm the embryo sac is haploid ,
zygote is diploid and endosperm is triploid.
Justify giving reasons for each stage.



Watch Video Solution

8. Mention the components of embryo sac.



Watch Video Solution

9. (i) Write the characteristics features of anther, pollen and stigma of wind pollinated flowers.

(ii) How do flowers reward their insect pollinators ? Explain.



Watch Video Solution

10. (a) Mention any four strategies adopted by flowering plants to prevent self- pollination.

(b) Why is geitonogamy also referred to as genetical autogamy?



Watch Video Solution

11. Expand: MOET. Mention its significance.



Watch Video Solution

12. Differentiate between perisperm and endosperm giving one example of each



Watch Video Solution

13. Fertilization is essential for the production of seed, but in some angiosperms seeds develop without fertilization.

(a) Give an example of an angiosperm that produces seeds without fertilization. Name the process.

(b) Explain the two ways by which seeds develop without fertilization.



Watch Video Solution

14. Write the function of each one of the following :

(a) (Oviducal) Fimbriae

(b) Coleoptile

(c) Oxytocin



Watch Video Solution

15. Write the function of each of the following :

(a) Middle piece in human sperm.

(b) Tapetum in anthers.

(c) Luteinizing hormone in human males.



Watch Video Solution

16. Write the function of each of the following

:

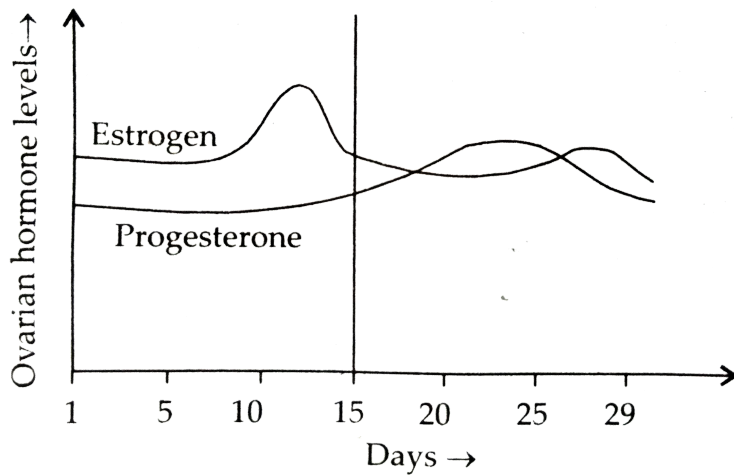
(a) Seminal vesicle

(b) Scutellum

(c) Acrosome of human sperm.



Watch Video Solution



17.

Read

the graph given above and correlate the uterine events that take place according to the hormonal levels on

(i) 6 - 15 days

(ii) 16 - 25 days

(iii) 26 - 28 days (if the ovum is not fertilised)

(b) Specify the sources of the hormones mentioned in the graph.



Watch Video Solution

18. Expand the following.

(i) IVF (ii) ZIFT (iii) IUI (iv) MTP



Watch Video Solution

19. Mention the number of cells in morula and that of blastula.



Watch Video Solution

20. Expand ART's. Mention any three examples.



Watch Video Solution

21. a) Which part of coconut represent endosperm?

b) How are pea seeds different from castor seeds with respect to endosperm?



Watch Video Solution

22. Write the changes a fertilized ovule undergoes within the ovary in an angiosperm plant.



Watch Video Solution

Section D

1. Mention the region in female reproductive system in which fertilization takes place.





[Watch Video Solution](#)

2. "Incompatibility is a natural barrier in the fusion of gametes". Justify the statement.



[Watch Video Solution](#)

3. Show diagrammatically the stages of embryonic development from zygote upto

implantation in humans .



Watch Video Solution

4. Describe the head region in human sperm.



Watch Video Solution

5. (a) At which stage of life does gametogenesis begin in human male and female respectively ?

(b)Name the organs where gametogenesis gets completed in male and female respectively.



Watch Video Solution

6. Mention the ploidy of the following:

a) Megaspore mother cell.

b) Microspore mother cell.

c) Pollen grain.

d) Ovum



Watch Video Solution

7. Study the flow chart given below . Name the hormones involved at each stage and explain their functions .



Watch Video Solution

8. Define Oogenesis. When and where in the body is oogenesis completed?



Watch Video Solution

9. Mention any two sexually transmitted diseases in human and its causative agent.



Watch Video Solution

10. Give reasons why:

(i) Most zygotes in angiosperms divide only after certain amount of endosperm is formed.

(ii) Groundnut seeds are exalbuminous and castor seeds are albuminous.

(iii) Micropyle remains as a small pore in the seed coat of a seed.

(iv) Integuments of an ovule harden and the water content is highly reduced, as the seed matures.

(v) Apple and cashew are not called true fruits.



Watch Video Solution

11. Describe in sequence the events that lead to the development of a 3-celled pollen grain from microspore mother cell in angiosperm.



Watch Video Solution

12. (a) Trace the development of megaspore mother cell up to the formation of a mature embryo-sac in a flowering plant.

(b) Draw a labelled diagram of the structure of mature dicot embryo.



Watch Video Solution

13. (a) Draw a labelled longisectional view of an albuminous 'seed'.

(b) How are seeds advantageous to flowering plants ?



Watch Video Solution

14. Describe the post-zygotic events leading to implantation and placenta formation in humans. Mention any two functions of placenta.



Watch Video Solution

15. Although sexual reproduction is a long drawn, energy-intensive complex form of reproduction, many groups of organisms in kingdom- Animalia and Plantae prefer this

mode of reproduction. Give atleast three reasons for this.



Watch Video Solution

16. Embryo sacs of some apomictic species appear normal but contain diploid cells. Suggest a suitable explanation for the condition.



Watch Video Solution

17. Describe oestrous cycle. In which group of animals is it observed.



Watch Video Solution

18. Give examples for physical and surgical contraceptive methods.



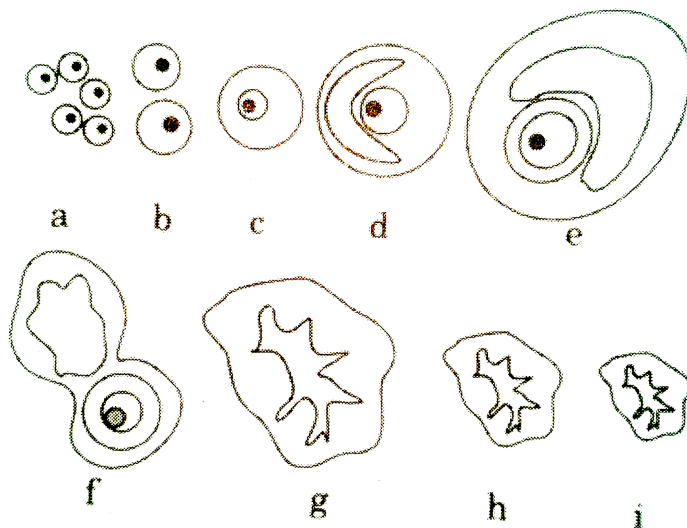
Watch Video Solution

19. The following is the illustration of the sequence of ovarian events (a - 1) in a human female.

(a) Identify the figure that illustrates ovulation and mention the stage of oogenesis it represents.

(b) Name the pituitary hormone that has

caused the above mentioned event.



Watch Video Solution

20. Mention the function of Synergids and polar nuclei in embryo sac.



Watch Video Solution

21. Describe the structure of blastula.



Watch Video Solution

22. Mention the fate of all the components of the embryo sac after fertilization



Watch Video Solution

23. (a) Draw a diagrammatic sectional view of a mature anatropous ovule and label the following parts in it :

(i) that develops into seed coat.

(ii) that develops into an embryo after fertilization.

(iii) that develops into an endosperm in an albuminous seed.

(iv) through which the pollen tube gains entry into the embryo sac.

(v) that attaches the ovule to the placenta.



Watch Video Solution

24. (a) Draw a diagrammatic sectional view of the female reproductive system of human and label the parts

(i) where the secondary oocytes develop

(ii) which helps in collection of ovum after ovulation

(iii) where fertilization occurs

(iv) where implantation of embryo occurs.



Watch Video Solution

25. Mention examples for:

a. Insect pollinated flower.

b. Wind pollinated flower



Watch Video Solution

26. Mention two types of gametogenesis.



Watch Video Solution

27. (a) Draw a diagram of a mature embryo sac of an angiosperm and label the following

parts in it :

(i) Filiform apparatus (ii) Synergids

(iii) Central cell (iv) Egg cell

(v) Polar nuclei (vi) Antipodals

(b) Write the fate of egg cell and polar nuclei after fertilization.



Watch Video Solution

Multiple Choice Question

1. Regeneration was first discovered in Hydra
by

A. Linnaeus

B. Trembley

C. Thomas Addison

D. Stanley

Answer: B



Watch Video Solution

2. Gerontology is the branch of science that deals with

A. birds

B. bones

C. ageing

D. earth

Answer: C



Watch Video Solution

3. Sex first originated in

A. protistans

B. simple algae

C. angiosperms

D. both 1 and 2

Answer: D



Watch Video Solution

4. *Strobilanthus kunthiana* (Neeelakuranji) flowers once in 12 years, The last time this plant flowered during September-October 2006. It is found in hilly areas in

A. Kerala and Karnataka

B. Tamil Nadu

C. Andhra Pradesh

D. Both (1) and (2)

Answer: D



Watch Video Solution

5. Blood is discharged from the uterus in

- A. oestrous cycle
- B. menstrual cycle
- C. cardiac cycle
- D. urea circle

Answer: B



Watch Video Solution

6. Endosperm provides food to the growing

A. seeds

B. fruit

C. endosperm

D. embryo

Answer: D



Watch Video Solution

7. Which of the following animals, is /are ovoviparous

A. Hen

B. Platypus

C. (1) and (2)

D. Rattle snake

Answer: D



Watch Video Solution

8. Parthenogenesis occurs in

A. Axolotl

B. Miracidium and Metacercaria

C. Cercaria

D. Sporocyst and redia

Answer: D



Watch Video Solution

9. Paramecium reproduces by

A. asexual reproduction

B. sexual reproduction

C. both (1) and (2)

D. none of the above

Answer: C



Watch Video Solution

10. When male differs female in morphol-ohy, it is called

A. heterogamy

B. homogamy

C. sexual dimorphism

D. hermaphroditism

Answer: C



Watch Video Solution

11. Paedogenesis is found in the larvae of

A. Taenia

B. Fasciola

C. Rana

D. Butterfly

Answer: B



Watch Video Solution

12. Oblique binary fission is found in

A. Monocystis

B. Plasmodium vivax

C. Planaria

D. Ceratium

Answer: D



Watch Video Solution

13. Which one has the capacity to reproduce without fertilization of eggs ?

A. Spider

B. Crow

C. Honey bee

D. Earthworm

Answer: C



Watch Video Solution

14. The term homothallic and monoeious are used to denote

A. Bisexual condition

B. Unisexual condition

C. Staminate flowers

D. Pistillate flowers

Answer: A



Watch Video Solution

15. What is the maximum age of parrot ?

A. 90 years

B. 25 years

C. 500 years

D. 140 years

Answer: D



Watch Video Solution

16. Which of the following statement is true about wate hyacinth ?

A. It is very useful for farmer because it acts as manure

B. It is found only in sea water

C. It takes oxygen from water which causes
death of fishes

D. It gives useful products to be used in
medicine

Answer: C



Watch Video Solution

17. Bryophyllum has asexual reproductive bodies
namely

A. runner

B. sucker

C. bulb

D. adventitious buds

Answer: D



Watch Video Solution

18. An example of a dioecious plant is

A. Cucumber

B. Date palm

C. Maize

D. Castor bean

Answer: C



Watch Video Solution

19. Internal fertilization is found in all

A. reptiles, birds, mammals

B. insects, annelies, echinoderms

C. sponges, flatworm, protochordates

D. fishes, amphibians, coelenterates

Answer: A



Watch Video Solution

20. What is a hermaphrodite?

A. Earthworm, Hydra and Leech

B. Cockroach, Ascaris and Hydra

C. Earthworm, Ascaris and Leech

D. Ascaris, Cockroach and Hydra

Answer: A



Watch Video Solution

21. Gamma cups are located on the male and female thalpi of Marchantia as

A. they are always attached to thalami

B. they are detached from the parent body
and germinate to form new individuals

C. Gemma cups are protective in function

D. they produce gametes

Answer: B



Watch Video Solution

22. Formation of the whole body of an organism from a small fragment is called

A. morphallaxis

B. epimorphosis

C. morphogenesis

D. metabolism

Answer: A



Watch Video Solution

23. The vegetative propagation where a branch is injured defoliated and pegged down in the ground is known as

A. layering

B. grafting

C. cutting

D. bud grafting

Answer: A



Watch Video Solution

24. It will not make any senses to produce seedless in

A. grapes

B. bananas

C. guavas

D. pomegrantes

Answer: D



Watch Video Solution

25. The technique of obtaining large number plantlets by tissue culture method is called

A. Plantiet culture

B. organ culture

C. micropropagation

D. macropropagation

Answer: C



Watch Video Solution

26. Fleshy buds produced in the axil of the leaves, which grow to form new plants when shed and on ground, are called

A. bulbs

B. bulbils

C. tubers

D. offsets

Answer: B



Watch Video Solution

27. Among the following which one is not a method of asexual reproduction ?

A. Budding

B. Layering

C. Sowing

D. Binary fission

Answer: C



Watch Video Solution

28. Double fertilization is found in

A. angiosperms

B. gymnosperms

C. pteridophytes

D. bryophytes

Answer: A



Watch Video Solution

29. Seeds are called products of sexual reproduction because they

A. are formed by fusion of gametes

B. give rise to new plants

C. can be stored for long time

D. are formed by fusion of pollen tubes

Answer: A



Watch Video Solution

30. Bamboo species flower

A. only once in lifetime

B. once in 12 years

C. every year

D. twice in 50-100 years

Answer: A



Watch Video Solution

31. Oestrous cycle is characteristic of mammalian females other than primates and occurs in females of

A. Monkeys

B. Cows

C. Apes

D. Humans

Answer: B



Watch Video Solution

32. Chromosome number in melocyte of drosophila (fruit fly) is

A. 2

B. 4

C. 6

D. 8

Answer: D



Watch Video Solution

33. Life span of crocodile and May fly is respectively

A. 15 years, 1week

B. 30 years, 1 year

C. 45 years, 1 month

D. 60 years, 1day

Answer: D



Watch Video Solution

34. Zoospores of chlamydomonas are

A. asexual reproductive bodies

B. sexual reproductive bodies

C. buds

D. gemmules

Answer: A



Watch Video Solution

35. The nodes are called 'eyes' which will form a new plant

A. Ginger

B. Bryophyllum

C. Alocasia

D. Potato

Answer: D



Watch Video Solution

36. Life span of tortoise is

A. 25-50 years

B. 50-75 years

C. 75 to 100 years

D. 100-150 years

Answer: D



Watch Video Solution

37. Vegetatively reproduced organism is

A. Dahlia

B. Ginger

C. Potato

D. all of the above

Answer: D



Watch Video Solution

38. Ciliate motile spores are called

A. aplanospores

B. conidia

C. zoospores

D. oospores

Answer: C



[Watch Video Solution](#)

39. The endosperm in angiosperm is

- A. haploid
- B. diploid
- C. triploid
- D. none of these

Answer: C



[Watch Video Solution](#)

40. The endosperm in gymnosperms is

- A. haploid
- B. diploid
- C. triploid
- D. none of these

Answer: A



Watch Video Solution

41. In wheat, pollination take place by

A. water

B. wind

C. animals

D. bats

Answer: B



Watch Video Solution

42. In maize pollination is called

- A. anemophily
- B. entomophily
- C. zoophily
- D. hydrophily

Answer: A



Watch Video Solution

43. Chromosome number in meiocyte of human beings is

A. 40

B. 42

C. 44

D. 46

Answer: D



Watch Video Solution

44. Chromosome number in gamete of ornnion is

A. 8

B. 16

C. 24

D. 32

Answer: B



Watch Video Solution

45. Comparable to angiosperms, which of the following algae exhibits diplontic life cycle ?

A. Spirogyra

B. Ectocarpus

C. Polysiphonia

D. Fucus

Answer: D



Watch Video Solution

46. The term used for the offspring that are exactly identical to one another as well as identical to their parents is

A. twins

B. replicates

C. drones

D. clone

Answer: D



Watch Video Solution

47. Find the correct combination.

A. Zoospore in sponge

B. Gemmules in Penicillium

C. Conidium in Algae

D. Buds in Hydra

Answer: D



Watch Video Solution

48. The meiocyte is

A. haploid

B. diploid

C. triploid

D. none of these

Answer: B



Watch Video Solution

49. Grafting in monocots is rarely successful because

A. monocots have closed vascular
cambium

B. monocots are without cambium

C. both (1) and (2)

D. both wrong

Answer: C



Watch Video Solution

50. If you have taken scion of desi mango and stock of dasher mango, what type of mango will be born ?

A. Dasher

B. Desi

C. Hybrid

D. None

Answer: B



Watch Video Solution

51. Vegetative reproduction of Agave occurs through

A. rhizome

B. stolen

C. bulbils

D. suckers

Answer: C



Watch Video Solution

52. New Banana plants develop from

A. rhizome

B. suckers

C. stolons

D. seed

Answer: B



Watch Video Solution

53. Tea and Cocoa are propagated by

A. layering

B. stem cuttings

C. grafting

D. bud grafting

Answer: B



Watch Video Solution

54. In *Lacerta saxicola armaniaca* (lizard) there are

A. females only

B. males only

C. bisexual only

D. Both (1) and (2)

Answer: A



Watch Video Solution

55. In which type of parthenogenesis, only males are produced ?

A. Arrhenotocky

B. Thelytoky

C. Amphitoky

D. Both (1) and (2)

Answer: A



Watch Video Solution

56. Vegetative propagation plays a vital role in

A. sericulture

B. apiculture

C. silviculture

D. horticulture

Answer: D



Watch Video Solution

57. Adventive embryony in Citrus is due to

A. egg

B. nucellus

C. embryo

D. integument

Answer: B



Watch Video Solution

58. After fertilization the ovary develops into

A. seed

B. fruit

C. pericarp

D. stamens

Answer: B



Watch Video Solution

59. Ginger multiplies vegetatively by

A. bud

B. tuber

C. corm

D. rhizome

Answer: D



Watch Video Solution

60. Layering is used for vegetative propagation of

A. Jasmine

B. Rose

C. Mango

D. all of the above

Answer: A



Watch Video Solution

61. In vegetative propagation by tubers, which of following remains constant through generations?

A. Morphology

B. Vigour only

C. Vigour and morphology only

D. Morphology, vigour and disease resistance

Answer: D



Watch Video Solution

62. Natural parthenogenesis is found in

- A. aphids
- B. honey bees
- C. wasps

D. all the above

Answer: D



Watch Video Solution

63. Stem cuttings are commonly used for the propagation of

A. Mango

B. Cotton

C. Rose

D. Banana

Answer: C



Watch Video Solution

64. Mango and Guava are propagated through

A. tissue culture

B. grafting

C. stem cuttings

D. layering

Answer: B



Watch Video Solution

65. First succesful animal clone was

A. dolly goat

B. dolly sheep

C. molly goat

D. molly sheep

Answer: B



Watch Video Solution

66. The terminal irreversiable stage of ageing is called

A. autogamy

B. syngamy

C. senescence

D. cytogames

Answer: C



67. Which type of binary fission occurs in paramecium

- A. simple binary fission
- B. longitudinal binary fission
- C. transverse binary fission
- D. oblique binary fission

Answer: C



68. Plasmotomy occurs in

A. Hydra

B. Obelia

C. Opalina

D. Plasmodium

Answer: C



Watch Video Solution

69. Gemmule formation occurs in

- A. fresh water sponge
- B. some marine sponges
- C. *Labeo rohita*
- D. Both (1) and (2)

Answer: D



Watch Video Solution

70. Menstrual cycle occurs in

A. Human females

B. Female primates

C. Mammalian females

D. Rabbit

Answer: D



Watch Video Solution

71. Isogametes are present in

A. Fuccus

B. Cladophora

C. Frog

D. Bird

Answer: B



Watch Video Solution

72. In grafting stock and scion ought to be joined

A. Phloem to phloem

B. xylem to xylem

C. pith to pith

D. cambium to cambium

Answer: D



Watch Video Solution

73. Ramphotyphlops braminus produces females only by parthenogenesis. It is a

A. snake

B. bird

C. frog

D. mammal

Answer: A



Watch Video Solution

74. Induction of rooting on stems before separating them from parent plant is

A. grafting

B. layering

C. root-stem joint

D. cutting

Answer: B



Watch Video Solution

75. Grafting in sugarcane can not be performed because

A. vascular bundles are scattered

B. phloem is internal to xylem

C. sugarcane plant is delicate

D. it is unable to bear injury

Answer: A



Watch Video Solution

76. In a grafted plant, stock has 48 chromosomes while scion has 24 chromosomes. The chromosome number for root cells and eggs are

A. 48 and 24

B. 24 and 24

C. 24 and 12

D. 48 and 12

Answer: D



Watch Video Solution

77. Ramet is

A. clone

B. callus

C. cell aggregate

D. individual member of clone

Answer: D



Watch Video Solution

78. Development of seed from an unfertilized egg is

A. vivipary

B. pathenocarpy

C. apogamy

D. apospory

Answer: C



Watch Video Solution

79. Which of the following groups of plants are propagated through underground root

A. Bryophyllum and Kalanchoe

B. Pistia, Chrysanthemum and Pineapple

C. Ginger , Potato, Onion, Zamikand

D. Swee Potato, Asparagus, Tapioca and
Dahlia

Answer: D



Watch Video Solution

80. A scion is grafted to a stock. The quality of fruits produced will be determined by the genotype of -

A. stock

B. scion

C. both stock and scion

D. neither stock nor scion

Answer: B



Watch Video Solution

81. The living organism can be unexceptionally distinguished from the non- living things on the basis of their ability for

A. reproduction

B. growth and movement

C. responsiveness to touch

D. intersection with the environment and
progressive evolution

Answer: A



Watch Video Solution

82. Maximum life span of Eagle is

A. 90 years

B. 15 years

C. 10 years

D. 5 years

Answer: A



Watch Video Solution

83. Male gametes in angiosperms are formed
by the division of

A. vegetative cell

B. microspore mother cell

C. microspore

D. generative cell

Answer: D



Watch Video Solution

84. In which of the following organisms, self fertilization is seen ?

A. Fish

B. Roundworm

C. Earthworm

D. Liver fluke

Answer: D



Watch Video Solution

85. Which of the following animals is having longitudinal binary fission

A. Euglena

B. Plasmodium

C. Planaria

D. Paramecium

Answer: A



Watch Video Solution

86. These processes are necessary for the complete development of male gametophyte from pollen mother cell

A. One meiotic and two mitotic divisions

B. One meiotic cell division and one mitotic
and division

C. Two meiotic cell divisions and one
mitotic cell division

D. Two mitotic cell divisions

Answer: A



Watch Video Solution

87. From which cells peripheral region of radicle is produced

A. vegetative cell

B. Hypophysis

C. Apical octant

D. Micropylar octant

Answer: B



Watch Video Solution

88. It is a process of embryosac formation from cell of nucellus, without undergoing meiosis ?

- A. Polyembryony
- B. Incompatibility
- C. Parthenocarpy
- D. Parthenogenesis

Answer: D



Watch Video Solution

89. It can regenerate entire alimentary canal

A. Amphibian

B. Fish

C. Sea cucumber

D. Parthenogenesis

Answer: C



Watch Video Solution

90. Spermatids are transformed into spermatozoa by

- A. Amphibian
- B. Spermatogenesis
- C. Meiosis
- D. Spermatosis

Answer:



Watch Video Solution

91. Study of pollen grain is called

A. Enthmology

B. Palynology

C. Micrology

D. Anthology

Answer: B



Watch Video Solution

92. Which is immortal ?

A. Plasma Cell

B. Germ Cell

C. Brain Cell

D. Kidney Cell

Answer: B



Watch Video Solution

93. Monocarpic plant

A. flowers twice in every year

B. bears only one type of flower

C. flowers once in every year

D. dies after flowering once in its life cycle

Answer: D



Watch Video Solution

94. Exponential growth occur in

A. yeast

B. asexual reproduction

C. bacteria

D. all of these

Answer: B



Watch Video Solution

95. Vegetative propagation in mint occurs by

A. offset

B. rhizome

C. sucker

D. runner

Answer: C



Watch Video Solution

96. Synergids are

A. haploid

B. diploid

C. triploid

D. tetraploid

Answer: A



Watch Video Solution

97. Match the items in column I with column II and choose the correct option

Column I	Column II
A Binary fission	1. Algae
B Zoospore	2. <i>Amoeba</i>
C Conidium	3. <i>Hydra</i>
D Budding	4. <i>Penicillium</i>
E Gemmules	5. Sponge

A. A-1, B-4, C-5, D-3

B. A-2, B-1, C-4, D-3

C. A-2, B-4, C-3, D-5

D. A-1, B-4, C-3, D-2

Answer: B



Watch Video Solution

98. Which one of the following animals possesses high regeneration capacity?

A. Planaria

B. Taenia

C. Salpa

D. Periplaneta

Answer: A



Watch Video Solution

99. Asexual reproduction in fungi takes place by

A. endospore

B. gametangia

C. exospores

D. conidiospore

Answer: D



Watch Video Solution

100. Gymnosperms bear seeds but lack fruits
because they lack

A. cotyledon

B. embryo

C. ovary

D. ovule

Answer: C



Watch Video Solution

101. Which one of the following processes results in the formation of clone of bacteria ?

A. Binary fission

B. Conjugation

C. Transformation

D. Transduction

Answer: A



Watch Video Solution

102. Egg apparatus of angiosperm consists of

A. an egg cell and two antipodals

B. an egg cell and two synergids

C. an egg cell and two polar nuclei

D. an egg and the central cell

Answer: B



Watch Video Solution

103. Breeding of crops with high levels of minerals vitamins and proteins called

A. somatic hybridisation

B. biofortification

C. biomagnification

D. micropropagation

Answer: B



Watch Video Solution

104. Vegetative propagation in Pistia occurs by

A. stolon

B. offset

C. runner

D. sucker

Answer: B



Watch Video Solution

105. Which of the following is pollinate by water

A. Viola

B. Yucca

C. Oxalis

D. Zostera

Answer:



Watch Video Solution

106. Find out the wrongly matched pair

A. tuber - potato

B. rhizome - ginger

C. bulbil- Agave

D. corm - crocus

Answer: D



[Watch Video Solution](#)

107. The term parthenogenesis was coined by

A. Owen

B. Bovri

C. Balfour

D. All of the above

Answer: A



[Watch Video Solution](#)

108. The offspring formed by asexual reproduction are identical and are referred to as

A. Zoospores

B. Clones

C. Conidia

D. gemmules

Answer: B



Watch Video Solution

109. The type of pollination involving transfer of pollen grains from anther to the stigma of the same flower is known as

A. geitonogamy

B. xenogamy

C. autogamy

D. apogamy

Answer: C



Watch Video Solution

110. The stage between two meiotic division is called

A. interphase

B. cytokinesis

C. interkinesis

D. karyokinesis

Answer: C



Watch Video Solution

111. Match list I with list II and select the correct option

List I	List II
A Gemmules	1. <i>Agave</i>
B Leaf-buds	2. <i>Penicillium</i>
C Bulbil	3. Water hyacinth
D Offset	4. Sponges
E Conidia	5. <i>Bryophyllum</i>

A. A-4, B-5, C-1, D-3, E-2

B. A-4, B-3, C-2, D-1, E-5

C. A-3, B-5, C-4, D-2, E-1

D. A-4, B-1, C-5, D-3, E-2

Answer: A



Watch Video Solution

112. The chromosomal number in the meiocytes of *Musca domestica* is :

A. 8

B. 12

C. 21

D. 23

Answer: B



Watch Video Solution

113. The 'Eyes' of the potato tuber are :-

- A. root buds
- B. flower buds
- C. shoot buds
- D. axillary budss

Answer: D



Watch Video Solution

114. Nucellar polyembryony is reported in species of

A. Citrus

B. Gossypium

C. Triticum

D. Brassica

Answer: A



115. Biodiversity of a geographical region represents

- A. endangered species found in the region
- B. the diversity in the organisms living in the region
- C. genetic diversity in the dominant species of the region
- D. None of these

Answer: B



Watch Video Solution

116. Testa of seed develops from

A. ovary wall

B. hilum

C. outer integument of ovule

D. funicle

Answer: C



Watch Video Solution

117. ovule in which funicle, chalaza and micropyle occur in one vertical plane is

A. campylotropous

B. amphitropous

C. orthropous

D. anatropous

Answer: C



118. Ovule integument gets transformed into

- A. seed
- B. fruit wall
- C. seed coat
- D. cotyledons

Answer: C



Watch Video Solution

119. Both, autogamy and geitonogamy are prevented in

A. Papaya

B. cucumber

C. castor

D. maize

Answer: A



Watch Video Solution

120. Denitrification is carried by bacteria

A. Pseudomonas

B. Nitrobacter

C. Nitrosomonas

D. Nitrococcus

Answer: A



Watch Video Solution

121. In general, pollen tube enter the ovule through

A. micropyle

B. chalaza

C. hilum

D. funicle

Answer: A



Watch Video Solution

122. Transfer of pollen from anthers of one flower to the stigma of another flower of the same plant is

A. geitonogamy

B. xenogamy

C. cleistogamy

D. chasmogamy

Answer: A



Watch Video Solution

123. The endosperm cells in angiosperms are

A. haploid

B. diploid

C. triploid

D. tetraploid

Answer: C



Watch Video Solution

124. The fleshy edible part of an apple is

A. thalamus

B. nucellus

C. ovary

D. endosperm

Answer: A



Watch Video Solution

125. Why asexual reproduction is sometimes disadvantageous ?

A. It allows animals that do not move around to produce offspring without finding mate

B. it allows an animals to produce many offspring quickly

C. it save the time and energy of gamete production

D. it produce genetically uniform populations

Answer: D



[Watch Video Solution](#)

126. Meiosis takes place in

- A. Gemmule
- B. Megaspore
- C. Meiocyte
- D. Conidia

Answer: C



[Watch Video Solution](#)

127. Monoecious plant of Chara shows occurrence of

A. Upper antheridium and lower oogonium on the same plant

B. Upper oogonium and lower antheridium on the same plant

C. Antheridiphore and archegoniophore on the same plant

D. Stamen and carpel on the same plant

Answer: B



Watch Video Solution

128. Which one of the following is wrong about Chara

A. Gobule is male reproductive structure

B. Upper oogonium and lower round antheridium

C. Globule and nucule present on the same
plant

D. Upper antheridium and lower oogonium

Answer: D



Watch Video Solution

129. In ginger , vegetative propagation occurs
through :

A. Offsets

B. Bulbils

C. Runners

D. Rhizome

Answer: D



Watch Video Solution

130. Which of the following pairs is not correctly matched ?

Mode of reproduction	Example
(1) Offset	Water hyacinth
(2) Rhizome	Banana
(3) Binary fission	<i>Sargassum</i>
(4) Conidia	<i>Penicillium</i>

A.

Mode of reproduction	Example
Offset	Waterhy acinth

B.

Mode of reproduction	Example
Rhizome	Banana

C.

Mode of reproduction	Example
Binary fission	Sargassum

D.

Mode of reproduction	Example
Conidia	Penicillium

Answer: C



Watch Video Solution

131. Which of the following flowers only once in its life-time

A. Papaya

B. Mango

C. Jackfruit

D. Bamboo species

Answer: D



Watch Video Solution

