



BIOLOGY

NTA MOCK TESTS ENGLISH

NTA NEET SET 92

Biology

1. Match the columns I, II and III , and choose the CORRECT combination from the options given regarding Cockroach

	Column I		Column II		Column III
a.	Testes	K.	2 nd – 6 th segments	w.	1 pair
b.	Ovaries	L.	4 th – 6 th segments	x.	8 ovarioles
c.	Spermathecae	M.	6 th – 7 th segments	y.	bilobed
d.	Mushroom	N.	6 th segment	z.	single

A. a-L-y, b-K-x, c-M-z, d-N-w

B. a-L-w, b-K-x, c-N-y, d -M-z

C. a-k-x,b-L-w,c-N-y,d-M-z

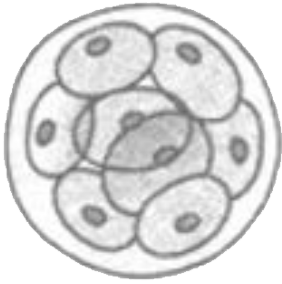
D. a-N-x,b-M-w,c-K-z,d-L-y

Answer: B



Watch Video Solution

2. Recognize the figure and find out the CORRECT matching.



a



b

- A. a-morula , b-blastocyst
- B. a-blastocyst , b-morula
- C. a-blastocyst , b-gastrula
- D. a-morula , b-gastrula

Answer: A



Watch Video Solution

3. A droplet infection is

A. Tetanus

B. Pneumonia

C. Syphilis

D. Typhoid

Answer: B



Watch Video Solution

4. Find the odd one.

(a) Sea lily

(b) Sea fan

(c) Sea cucumber

(d) Sea urchin

A. Sea lily

B. Sea fan

C. Sea cucumber

D. Sea urchin

Answer: B



Watch Video Solution

5. The relays impulses from the CNS to skeletal muscles .

- A. Somatic neural system
- B. automatic neural system
- C. the central neural systems
- D. the vertebral system

Answer: A



Watch Video Solution

6. Disease caused by undersecretion of adrenal cortex

- A. Sterility
- B. Cretinism
- C. Cushing disease
- D. Addison's disease

Answer: D



Watch Video Solution

7. Fatigue is mostly associated with

- A. repeated stimulation of muscles
- B. excessive work load on muscles
- C. anaerobic respiration in muscles
- D. all of these

Answer: D



Watch Video Solution

8. Abortions are much riskier

- A. before second trimester
- B. after conception
- C. at second trimester
- D. After gastrulation

Answer: C



Watch Video Solution

9. Find the odd one out w.r.t complete linkage

- A. Eye of Octopus and mammals
- B. Flippers of penguin and dolphins
- C. Sweet potato and potato

D. Upper limb of man and forelimbs of cheetah .

Answer: D



Watch Video Solution

10. Flowers which are pollinated by wind are

A. Compositae

B. Brassicaceae

C. Solanaceae

D. Poaceae

Answer: D



Watch Video Solution

11. The plants growing in dark ,show yellowing of leaves and elongated internodes, this condition is called as

- (a) Etiolation
- (b) Chlorosis
- (c) Dechlorosis
- (d) Dark effect

A. Etiolation

B. Chlorosis

C. Dechlorosis

D. Dark effect

Answer: A



Watch Video Solution

12. Which of the following is not one of the prime health risk associated with greater UV radiation through the atmosphere due to depletion of

stratospheric ozone ?

- A. reduced immune system
- B. damage of eyes
- C. increased liver cancer
- D. increased skin cancer

Answer: C



Watch Video Solution

13. Ornamental belonging to family Liliaceae are

- (a) tulip and Petunia
- (b) gloriosa and tulip
- (c) gloriosa and lupin
- (d) lupin and Sesbania

- A. tulip and Petunia
- B. glorioas and tulip

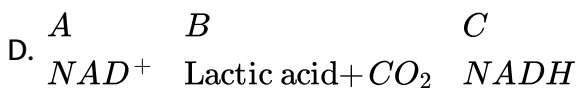
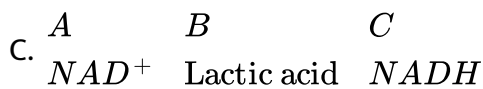
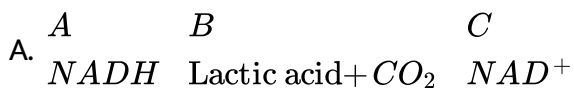
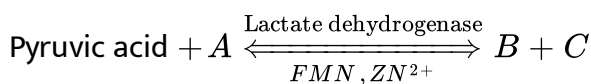
C. glorioas and lupin

D. lupin and Sesbania

Answer: B

 **Watch Video Solution**

14. Identify A,B and C in the given reaction of lactic acid fermentation and select the correct option.



Answer: B

 **Watch Video Solution**

15. Read the following statements regarding methanogens and select the correct option.

- (i) They are included in the group Archaeobacteria.
- (ii) They are responsible for the production of biogas in gobar gas plants.
- (iii) They live in hot sulphur springs.
- (iv) They are strictly anaerobic.

A. Statements (i) and (ii) are correct

B. Statements (i),(ii) and (iv) are correct

C. Statements (ii),(iii) and (iv) are correct

D. All Statements are correct

Answer: B



Watch Video Solution

16. Match the columns I and II , and choose the correct combination from the options given .

Column I

(a) Chlorophyceae

(b) Phaeophyceae

(c) Rhodophyceae

Column II (Major pigments)

(i) Chlorophyll a, c fucoxanthin

(ii) Chlorophyll a, d, phycoerythrin

(iii) Chlorophyll a, b

(a) a-iii, b-i, c-ii

(b) a-iii, b-ii, c-i

(c) a-ii, b-i, c-iii

(d) a-i, b-iii, c-ii

A. a-iii, b-i, c-ii

B. a-iii, b-ii, c-i

C. a-ii, b-i, c-iii

D. a-i, b-iii, c-ii

Answer: A



Watch Video Solution

17. Phagocytosis may be characterized by which of the following statements ?

- A. It is a constitutive process
- B. It involves fluid uptake by small vesicles
- C. It is important in digestive processes in mammals
- D. It involves the uptake of cellular debris in large endocytic vesicles.

Answer: D



Watch Video Solution

18. Identify CORRECTLY matched pair.

- A. Zygotene -Pairing of homologous chromosomes
- B. Pachytene-Disjunction of hi homologous chromosomes
- C. Diakinesis-Recombination of non sister chromatids of homologous chromosomes

D. Diplotene-Nucleolus disappears

Answer: A



Watch Video Solution

19. The perigynous flower is observed in :

A. Peach

B. Cucumber

C. cotton

D. Guava

Answer: A



Watch Video Solution

20. Match Column - I with column -II and select the CORRECT option from the codes given below.

Column – I	Column – II
(1) Bulliform cells	(i) Regulate the opening and closing of stomata
(2) Guard cells	(ii) Aerating pores in the bark of the plant
(3) Lenticels	(iii) Rolling in and out of leaves
(4) Subsidiary cells	(iv) Accessory cells

A. 1-(iii) , 2 -(i), 3-(ii) , 4-(iv)

B. 1-(i) , 2 -(ii), 3-(iii) , 4-(iv)

C. 1-(iv) , 2 -(iii), 3-(i) , 4-(ii)

D. 1-(ii) , 2 -(iv), 3-(iii) , 4-(i)

Answer: A



Watch Video Solution

21. Guttation is due to

- A. OP
- B. root pressure
- C. diffusion pressure
- D. transportation pull

Answer: B



Watch Video Solution

22. Nodules in soybean plant export the fixed nitrogen in the form of

- A. is a nitrogen and phosphorus rich compounds
- B. carries high NO_3 than carbohydrates
- C. carries high N : C ratio

D. Is highly soluble in organic compounds so , transported through xylem.

Answer: C



Watch Video Solution

23. Choose the CORRECT one for photorespiration that CO_2 compensation point

A. Photorespiration is common in plants having high CO_2

Compensation point

B. Photorespiration is caused by high O_2 and low CO_2

C. It is not affected by light , temperature

D. All of the above

Answer: A



Watch Video Solution

24. Two organisms with different correlated morphological characters belong to

- A. One biological species
- B. One taxonomic species
- C. Two biological species
- D. Two taxonomic species

Answer: D



Watch Video Solution

25. Electron Transport System (ETS) is located in mitochondrial

- A. Outer membrane
- B. inter membrane space
- C. inner membrane

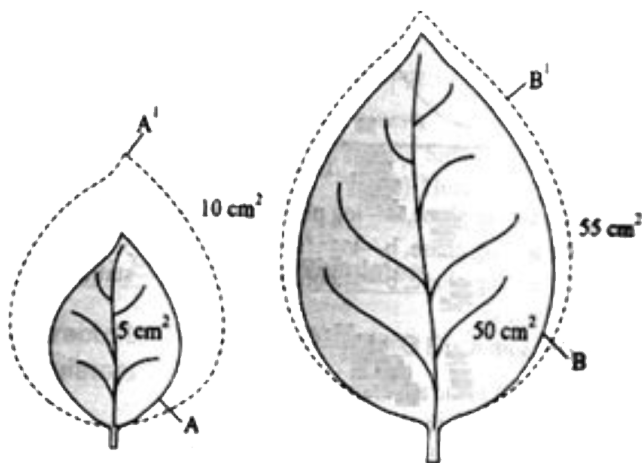
D. matrix

Answer: C



Watch Video Solution

26. Two levels , A and B of different sizes but shown absolute increase in the unit time to given leaves A^1 and B^1 Find out the absolute growth and relative growth rate of both the leaves.



A.

absolute Growth of
 5 cm^2

absolute Growth of B
 10 cm^2

Relative Growth Rate
10 %

B.

absolute Growth of
 $10cm^2$

absolute Growth of B
 $5cm^2$

Relative Growth Rate
5 %

C.

absolute Growth of
 $5cm^2$

absolute Growth of B
 $5cm^2$

Relative Growth Rate
10 %

D.

absolute Growth of
 $5cm^2$

absolute Growth of B
 $5cm^2$

Relative Growth Rate
100 %

Answer: D



Watch Video Solution

27. Among the following which one is not a method of asexual reproduction ?

A. Budding

B. Syngamy

C. Gemmulation

D. Fragmentation

Answer: B



Watch Video Solution

28. Differentiate between protandry and protogyny conditions.

A. Quick fertilization

B. Self fertilization

C. Cross fertilization

D. Delayed fertilization

Answer: C



Watch Video Solution

29. Match Column -I with column-II and select the CORRECT option from the codes given below .

Column - I	Column - II
(P) Autopolypoidy	(i) $2n + 1$
(Q) Trisomy	(ii) AAAA
(R) Allopolyploidy	(iii) AABB
(S) Nullisomy	(iv) $2n - 2$

A. P-(ii), Q-(i), R-(iii), S-(iv)

B. P-(iv), Q-(i), R-(ii), S-(iii)

C. P-(ii), Q-(iv), R-(iii), S-(i)

D. P-(ii), Q-(i), R-(iv), S-(iii)

Answer: A



Watch Video Solution

30. Enzyme required for transcribing genetic information of DNA into RNA is

- A. DNA dependent DNA polymerase
- B. DNA dependent RNA polymerase
- C. RNA dependent RNA polymerase
- D. Both (a) and (b)

Answer: B



Watch Video Solution

31. Match the columns I and II, and choose the correct combination from the options given.

Column I	Column II
a. Brassica	1. Pusa Sawani
b. Cauliflower	2. Pusa Sadabahar
c. Chilli	3. Pusa Shubhra
d. Okra	4. Pusa Swarnim

A. a-1, b-2, c-3, d-4

B. a-3, b-4, c-2, d-1

C. a-4, b-3, c-2, d-1

D. a-4, b-3, c-1, d-2

Answer: C



Watch Video Solution

32. The is a non-edible fungus.

A. Agaricus

B. Morels

C. truffles

D. Toadstools

Answer: D



Watch Video Solution

33. The means the number of birth per in a particular area for a particular time.

- A. productivity, 100
- B. mortality, 1000
- C. natality, 1000
- D. natality, 100

Answer: C



Watch Video Solution

34. XO type of sex determination and XY type of sex determination are the examples of

- A. male heterogamety
- B. female heterogamety
- C. male homogamety

D. both (b) and (c)

Answer: A



Watch Video Solution

35. Consider the following statements (A-D) and select the option which correctly fills the blanks.

A. A group of species belonging to a trophic level that exploits a common resources base in a similar fashion is known as (i).

B. (ii) reduces decomposition and causes the Pilling up of detritus.

C. In oceans, productivity is limited by (iii) and (iv).

D. The largest reservoir of calcium is (v).

- | | | | | | | |
|----|-------|---------------------|----------|------------|----------|-------|
| A. | (i) | (ii) | (iii) | (iv) | (v) | |
| | Guild | Oxygen | Nitrogen | Light | Rocks | |
| B. | (i) | (ii) | | (iii) | (iv) | (v) |
| | Guild | Anaerobic condition | | Light | Nitrogen | Rocks |
| C. | (i) | (ii) | | (iii) | (iv) | (v) |
| | Guild | Anaerobic condition | | Phorphorus | Dark | Soil |
| D. | (i) | (ii) | | (iii) | (iv) | (v) |
| | Guild | Anaerobic condition | | Nitrogen | Light | Soil |

Answer: B



Watch Video Solution

36. Assertion : Asexual reproduction involves formation of clones of an organism.

Reason : Clones are morphologically and genetically similar individuals.

- A. only morphologically alike
- B. only genetically alike
- C. morphologically as well as genetically alike
- D. occasionally genetically alike

Answer: C



Watch Video Solution

37. Fill in the blanks :

1. More than ...a... per cent of all species recorded are animals, while plants (including algae, fungi, bryophytes, gymnosperms and angiosperms) comprise no more than ...b.... Per cent of the total.
2. Among animals, insects making up more than ...c... per cent of the total.
3. Out of every 70 animals on this planet,d.... are insects.
4. The number ofe..... species in the world is more than all thef.... species combined.

A. a - 70, b - 12 , c - 22 , d - 7 , e- vertebrate , f - fungi

B. a - 70 , b - 22 , c - 70 , d - 7 , e - fungi , f - vertebrate

C. a - 70 , b - 22 , c - 70 , d - 49 , e - fungi , f - vertebrate

D. a - 67, b - 12 , c- 70 , d - 49 , e- vertebrate f - fungi

Answer: C



Watch Video Solution

38. All the given statement are true, except

- A. DNA is more stable the RNA because DNA contains 5 methyl uracil and deoxyribose
- B. DNA replication is semi-conservation bidirectional and semi-discontinuous
- C. Taylor proved semi-conservative replication of DNA by working on E. Coil bacteria
- D. Klenow fragment' is a part of DNA polymerase.

Answer: C



Watch Video Solution

39. Green muffler is specific for

- A. reducing smog

- B. sound insulation
- C. preventing haze formation
- D. reducing ground frost

Answer: B



Watch Video Solution

40. Select the CORRECT sequence of events with respect to the fungal sexual cycle.

- A. Karyogamy, plasmogamy and meiosis
- B. Meiosis, plasmogamy and karyogamy
- C. Plasmogamy, karyogamy and meiosis
- D. Meiosis, karyogamy and plasmogamy

Answer: C



Watch Video Solution

41. In fun aria, meiosis occurs in

- A. Protonema
- B. Prothallus
- C. Spore mother cells
- D. Spore

Answer: C



Watch Video Solution

42. The vacuole in the plant cell contains

- A. Stroma
- B. Matrix
- C. tonoplast
- D. Cell sap

Answer: D



Watch Video Solution

43. Syncytium condition can be observed in

- A. Liquid endosperm of coconut
- B. Solid endosperm of coconut
- C. Both liquid as well as solid endosperm of coconut
- D. Embryo of coconut

Answer: A



Watch Video Solution

44. Monocot plants are characterized by the presence of how many of the following characters?

Scutellum, Reticulate venation, Fibrous roots, stilt roots, Pulvinous leaf base, isobilateral leaves

- A. two
- B. three
- C. four
- D. all of these

Answer: B



Watch Video Solution

45. Cells of tissue are living, show angular wall thickenings and provide mechanical support.

- A. xylem
- B. sclerenchyma
- C. Collenchymas

D. Epidermis

Answer: C



Watch Video Solution

46. Apical dominance is caused due to action of

- A. Absciscic acid in lateral bud
- B. Cytokinin in leaf tip
- C. Gibberellin in lateral buds
- D. Auxin in shoot tip

Answer: D



Watch Video Solution

47. In a cereal grain or other grasses the single cotyledon of embryo is represented by

- A. coleoptile
- B. coleorhiza
- C. prophyll
- D. scutellum

Answer: D



Watch Video Solution

48. Select the WRONG statements regarding carbon cycle.

- A. Oceanic water can retain upto 50 time the CO_2 levels in the air
- B. The only major reservoir of carbon in the biosphere is the lake
- C. Volcanic eruptions, hot springs, burning of fossil fuel and weathering add carbon dioxide into the atmosphere .

D. The recycling of carbon is a self regulating feedback system.

Answer: D



Watch Video Solution

49. Which is the CORRECT match ?

A. CrylAb - Cotton bollworms

B. CrylAc - Cotton bollworms

C. CrylAc - Corn borer

D. CrylAb - corn borer

Answer: B



Watch Video Solution

50. The difference between oogenesis and spermatogenesis is

- A. oogenesis begins at puberty and spermatogenesis during embryonic development .
- B. oogenesis results in formation of four haploid ova from a primary oocyte, while during spermatogenesis only one sperm is formed from a primary spermatocyte.
- C. the Cytoplasmic division is unequal in oogenesis and equal in spermatogenesis .
- D. spermatogenesis is not completed until after fertilization occurs, but oogenesis is completed at the time of birth.

Answer: C



Watch Video Solution

51. The pathogen *Microsporum* responsible for ringworm disease in humans belongs to the same kingdom as that of

A. Wuchereria , a roundworm

B. Entamoeba , a protozoan

C. Mucor, a mould

D. Taenia, a tapeworm

Answer: C



Watch Video Solution

52. Which of the following hormones has no control over gluconeogenesis ?

A. Insulin

B. Glucagon

C. Vasopressin

D. Corticosterone

Answer: C



[Watch Video Solution](#)

53. 'Ontogeny recapitulates phylogeny' is the statement related to

- A. morphology
- B. physiology
- C. taxonomy
- D. embryology

Answer: D



[Watch Video Solution](#)

54. Approximately how many restriction enzymes have been isolated from the different (over 230) strains of bacteria:

- A. A - 900 , B - 230
- B. A - 600 , B - 230

C. A - 230 , B - 900

D. A - 900 , B - 600

Answer: A



Watch Video Solution

55. The first clinical gene therapy was given for treating

A. diabetes mellitus

B. chicken pox

C. rheumatoid arthritis

D. adenosine deaminase deficiency

Answer: D



Watch Video Solution

56. Which of the following organisms do not show male heterogamety ?

- A. hens
- B. humans
- C. fruit flies
- D. grasshoppers

Answer: A



Watch Video Solution

57. In IUCN Red list (2004), extinction of 784 species includes:

- A. 338 vertebrates , 359 invertebrates and 78 plants
- B. 359 vertebrates , 33.8 invertebrates and 87 plants
- C. 338 vertebrates , 359 invertebrates and 87 plants
- D. 359 vertebrates , 338 invertebrates and 78 plants

Answer: C



Watch Video Solution

58. The five kingdom system of classification was proposed by.....,in the year.....

A. Whittaker, 1960

B. Whittaker, 1969

C. John Ray, 1975

D. de Candole , 1978

Answer: B



Watch Video Solution

59. All of the following processes occur in the endomembrane system , except

- A. aerobic respiration
- B. protein glycosylation
- C. excretion
- D. synthesis of lipid - like steroidal hormones

Answer: A



Watch Video Solution

60. After fertilization, in the embryo sac which will grow faster?

- A. Nucellus
- B. Endosperm
- C. Pollen tube
- D. Synergids

Answer: B



Watch Video Solution

61. The disease sickle-cell anaemia is caused by the substitution of (i) by (ii) at the (iii) position of (iv) globin chain of haemoglobin molecule

Which of the following correctly fills the blanks in the above statements ?

A. (i) valine , (ii) glutamic acid , (iii) sixth , (iv) beta

B. (i) glutamic acid , (ii) valine , (iii) sixth , (iv) beta

C. (i) glutamic acid , (ii) valine , (iii) fifth , (iv) beta

D. (i) valine , (ii) glutamic acid , (iii) fifth , (iv) beta

Answer: B



Watch Video Solution

62. Identify the sequence of mRNA from the given sequence of coding strand of DNA.

5' T A C G T A G 3'

A. 5' U T G C U T C 3'

B. 3' U A C G U A G 5'

C. 3' U G C U T C 5'

D. 5' U A C G U A G 3'

Answer: D



Watch Video Solution

63. Find out the pairs which are correctly matched

- | | |
|---------------------------|--------------------------------|
| a. Cyanobacteria | 1. Biopesticide |
| b. Mycorrhiza | 2. Solubilisation of phosphate |
| c. Bacillus thuringiensis | 3. Cry protein |
| d. single cell protein | 4. Rhizobia |

A. A with 2

B. B with 2

C. C with 2

D. D with 2

Answer: C



Watch Video Solution

64. Consider the following statement.

- A . Temperature is the most ecologically relevant environmental factor.
- B. Temperature increases progressively from the equator towards the poles and from plains to the mountain tops.
- C. Diversity is not an important characteristic of living organisms .
- D. Mongo trees do not and cannot grow in temperate countries like Canada and Germany.

Of the above statements:

- A. B and D are correct
- B. A and B are correct
- C. A and C are correct
- D. A and D are correct

Answer: D



Watch Video Solution

65. What is the probability of production of dwarf offsprings in a cross between two heterozygous tall pea plants ?

- A. Zero
- B. 50 %
- C. 75 %
- D. 100 %

Answer: C



Watch Video Solution

66. The rate of conversion of light energy into chemical energy of organic molecules in an ecosystem is

- A. Gross primary productivity
- B. Net primary productivity
- C. Net secondary productivity
- D. Gross secondary productivity

Answer: A



Watch Video Solution

67. ____ is a parasite of large intestine of human beings and causes the disease____

- A. Escherichia coli, amoebic dysentery
- B. Entamoeba histolytica , amoebic dysentery
- C. Plasmodium vivax, malaria
- D. Trypanosoma gambiense , sleeping sickness

Answer: B



[Watch Video Solution](#)

68. Mendel formulated the law of of purity of gametes on the basis of

- A. monohybrid cross
- B. dihybride cross
- C. test cross
- D. back cross

Answer: A



[Watch Video Solution](#)

69. Which of the below mentioned regions exhibit less seasonal variations
?

- A. Tropics
- B. Temperates

C. Alpines

D. Both (A) and (B)

Answer: A



Watch Video Solution

70. Read the following matches

- (i) Datura- Actinomorphic flower
- (ii) Canna - Zygomorphic flower
- (iii) Gulmohur - Zygomorphic flower
- (iv) Cassia - Asymmetric flower

Which of these are correct ?

A. (i) , (ii) and (iii)

B. (i), (ii)

C. (ii) and (iv)

D. (ii), (iii) and (iv)

Answer: B



Watch Video Solution

71. Which of the following is the CORRECT sequence of PCR ?

A. Denaturation → Annealing → Extension

B. Extension → Denaturation → Annealing

C. Annealing → Extension → Denaturation

D. Denaturation → Extension → Annealing

Answer: A



Watch Video Solution

72. The following biomolecules are arranged in increasing order of their average percentage composition of the total cellular mass . Which of these orders is correct ?

A. Ions < Lipids < Carbohydrates < Nucleic acid < Proteins

B. Lipids < Ions < Carbohydrates < Nucleic acids < Proteins

C. Ions < Carbohydrates < Lipids < Nucleic acids < Proteins

D. Ions < Nucleic acids < Carbohydrates < Lipids < Proteins

Answer: A



Watch Video Solution

73. Which of the following is incorrect regarding human respiratory system?

A. I and III

B. II and IV

C. I and II

D. II, III and IV

Answer: B



[Watch Video Solution](#)

74. While recording ECG , the electrical lead is not attached to the

- A. right wrist
- B. left wrist
- C. right ankle
- D. left ankle

Answer: C



[Watch Video Solution](#)

75. There is a valve present at the junction of

- A. esophagus and stomach
- B. stomach and duodenum
- C. ileum and caecum

D. ileum and jejunum

Answer: C



Watch Video Solution

76. In Henle's loop were absent from mammalian nephron , which of the following is to be expected

- A. There will be no urine formation
- B. There will be hardly any change in the quality of urine formation.
- C. The urine will be more concentrated
- D. The urine will be more dilute

Answer: D



Watch Video Solution

77. Match the columns I,II and III and choose the CORRECT combination, from the options given.

	Column I		Column II		Column III
a.	Tall and slender cells	1.	Cuboidal epithelium	K.	Bronchioles
b.	Flattened cells with irregular boundaries	2.	Columnar epithelium	L.	Tubular parts of nephrons
c.	Cilia on their free surface	3.	Squamous epithelium	M.	Lining of intestine
d.	Cube like cells	4.	Ciliated epithelium	N.	Wall of blood vessels

A. a - 2 - M, b - 3 - N , c - 4 - K, d - 1 - L

B. a - 2 - K, b - 1 - L , c - 4 - M, d - 3 - N

C. a - 4 - M, b - 3 - L , c - 1 - K, d - 1 - N

D. a - 2 - M, b - 3 - N , c - 4 - L, d - 1 - K

Answer: A



Watch Video Solution

78. The cells of the mammary gland that secrete and store milk are called

- A. alveoli
- B. ampulla
- C. areola
- D. adipose

Answer: A



Watch Video Solution

79. Which of the following immunoglobulin (Ig) is present in colostrum?

- A. IgM, IgG
- B. IgG, IgA
- C. IgA only

D. IgG only

Answer: C



Watch Video Solution

80. Which one of the following groups of three animals, each is correctly matched with their one characteristic morphological feature ?

- | | | |
|----|---|---|
| A. | Animals
Centipede , prawn , Sea urchin | Morphological feature
Joined appendages |
| B. | Animals
Scorpion, Spider, Cockroach | Morphological feature
Ventral solid central nervous system |
| C. | Animals
Cockroach, Locust, Taenia | Morphological feature
Metameric segementation |
| D. | Animals
Liver fluke , sea anemone , Sea cucumber | Morphological feature
Bilateral symmetry |

Answer: B



Watch Video Solution

81. Which of the following is a characteristic feature of the human cornea ?

- A. It is secreted by the conjuction and glandular cells.
- B. It is also called a lacrimal gland , which secretes tears.
- C. Blood circulation is absent in the cornea
- D. In old age, the cornea hardens and a white layer is deposited over it which leads to the formation of a cataract.

Answer: C



Watch Video Solution

82. Estrogen and testosterone are steroid hormones, and most likely bind to

- A. membrane ion channels
- B. cytoplasmic receptors
- C. enzyme - linked membrane receptors
- D. G - Protein linked membrane receptors

Answer: A



Watch Video Solution

83. Which of the following can be categorised as an age - related disorder ?

- A. Myasthenia gravis
- B. Tetany
- C. Muscular dystrophy
- D. Osteoporosis

Answer: D



[Watch Video Solution](#)

84. Which of the following is used as an emergency contraceptive ?

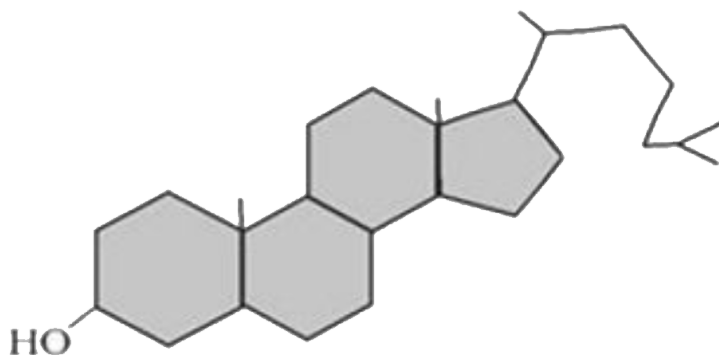
- A. Administration of progestogens
- B. Administration of progestogens - estrogen combinations
- C. IUDs
- D. All of the above

Answer: D



[Watch Video Solution](#)

85. The following organic compound in living tissue is



A. carbohydrate

B. protein

C. lipid

D. nucleic acid

Answer: C



Watch Video Solution

86. The solubility of oxygen is

- A. 20 - 25 times higher than carbon dioxide
- B. 20 - 25 times lower than carbon dioxide
- C. 10 - 15 times higher than carbon dioxide
- D. 10 - 15 times lower than carbon dioxide

Answer: B



Watch Video Solution

87. Congestion of the lungs is one of the main symptoms in

- A. angina pectoris
- B. heart block
- C. heart failure
- D. cardiac arrest

Answer: C



Watch Video Solution

88. The muscularis layer of alimentary canal has

- A. inner circular and outer longitudinal muscles
- B. inner longitudinal and outer circular muscles
- C. inner smooth and outer skeletal muscles
- D. inner skeletal and outer smooth muscles

Answer: A



Watch Video Solution

89. Which of the following statements are CORRECT ?

- I. Amino acids are organic compounds containing an amino group and an acidic group as substituents on the same carbon i.e., the α - carbon

II. Primary metabolites have identifiable functions and play known roles in normal physiological processes.

III. Ribulose Bisphosphate Carboxylase - Oxygenase (RUBISCO) is the most abundant protein in the whole of the biosphere .

IV. Starch forms helical primary strutures and it can hold I_2 molecules in the helical portion.

A. I and III

B. II and IV

C. I,II, III and IV

D. I,II and III

Answer: D



Watch Video Solution

90. Refer to the events given below and arrange them in the CORRECT chorological order.

(A) Invertebrates formed and active

- (B) First cellular forms of life
- (C) Existence of seaweeds and few plants
- (D) Appearance of reptiles on earth
- (E) Appearance of shrew - like mammals.

A. $B \rightarrow A \rightarrow C \rightarrow D \rightarrow E$

B. $B \rightarrow C \rightarrow A \rightarrow D \rightarrow E$

C. $B \rightarrow A \rightarrow D \rightarrow C \rightarrow E$

D. $B \rightarrow A \rightarrow C \rightarrow E \rightarrow D$

Answer: A



Watch Video Solution