



BIOLOGY

NTA MOCK TESTS ENGLISH

NTA NEET TEST 85

Biology

1. Which of the following statements is correct regarding Mitochondria ?

- A. Matrix possesses single ds circular DNA molecule and ribosomes of 70S type.
- B. Site of aerobic and anaerobic respiration
- C. Outer membrane forms the continuous limiting boundary of the organelle , and is folded into cristae .
- D. Mitochondria divide by fragmentation to increases its number.

Answer: B



Watch Video Solution

2. The two most important property of Malignant tumors are :

- A. metastasis and angiogenesis
- B. metastasis and contact inhibition
- C. metastasis and apoptosis
- D. metastasis and controlled division

Answer: A



Watch Video Solution

3. Match the following and choose the correct combination from the options.

Column - I	Column - II
A Potassium	(i) Constituent of ferredoxin
B Sulphur	(ii) Involved in stomatal movement
C Molybdenum	(iii) Auxin synthesis
D Zinc	(iv) Component of nitrogenase

A. A -ii, B - i, C -iv , D - iii

B. A -i, B - ii, C -iii , D - iv

C. A -iv, B - iii, C -ii, D - i

D. A -ii, B - iii, C -iv , D - i

Answer: A



Watch Video Solution

4. Read the following statements and select the right option :

I. The spleen is a large bean-shaped organ, which mainly contains lymphocytes and phagocytic cells.

II. The principal of vaccination is based on the property of memory of the immune system.

III. The graft rejected or failure of organ transplantation is due to cell-mediated immunity .

IV. The yellowish fluid colostrum has an abundant amount of IgA antibodies which provide active immunity to newborn babies.

A. I,II,III are correct

B. II, III, IV are correct

C. II and IV are correct

D. Only II is correct

Answer: A



Watch Video Solution

5. Match the phytohormones given in column I with their functions given in column II. Choose the answer with the correct combination of the alphabets of the

two-column.

	Column –I (Phytohormones)		Column – II (Function)
A	Auxins	(p)	Elongation of genetic dwarf plants
B	Gibberellins	(q)	Inducing fruit ripening
C	Cytokinins	(r)	Formation of the abscission layer
D	Ethylene	(s)	Root initiation on cutting the stem
		(t)	Richmond lang effect

A. $A = r, B = s, C = p, D = t$

B. $A = p, B = r, C = q, D = s$

C. $A = s, B = t, C = r, D = q$

D. $A = s, B = p, C = t, D = q$

Answer: D



Watch Video Solution

6. Which of the following is an incorrect statement about cannabinoids ?

A. Cannabinoids are the group of chemicals that interact with cannabinoids receptors present mainly in brain and gastrointestinal tract.

B. Cannabinoids are naturally obtained from the inflorescence of the *Cannabis sativa* plant.

C. Cannabinoids includes marijuana, hashish , charas and ganja.

D. Cannabinoids are generally taken by inhalation and oral ingestion, which affects the cardiovascular system of the body.

Answer: A



Watch Video Solution

7. When a cell is placed in the solution of different concentration then , the cell swells in.... and shrink in ... respectively.

A. hypotonic solution and isotonic solution

B. hypotonic solution and hypertonic solution

C. isotonic solution and hypertonic solution

hypertonic solution and hypotonic solution

D. hypertonic solution and hypotonic solution

Answer: B



Watch Video Solution

8. Following are some events of mitotic cell division, select the correct order in which these events occur .

(i) Condensation of chromosomes is completely

(ii) chromosomes lose their identity as discrete elements

(iii) Sister chromatids separate

(iv) Initiation of the assembly of the mitotic spindle

A. $i \rightarrow ii \rightarrow iii \rightarrow iv$

B. $iv \rightarrow i \rightarrow iii \rightarrow ii$

C. $ii \rightarrow i \rightarrow iv \rightarrow iii$

D. $iv \rightarrow iii \rightarrow i \rightarrow ii$

Answer: C



Watch Video Solution

9. Which of the following is a true nut?

- A. Morphogenic movement of blastomere
- B. Formation of blastocyst with fluid filled cavity
- C. Formation of three primary germinal layers
- D. Formation of epiblast and hypoblast form germinal disc

Answer: B



Watch Video Solution

10. Which of the following is involved in the synthesis of the plant hormone IAA and the vasoconstriction serotonin ?

A. Tryptophan

B. Tyrosine

C. Phenylalamine

D. None of these

Answer: A



Watch Video Solution

11. Male and female gametophytes are independent and freeliving in:

A. Cedrus

B. Marchantia

C. Pinus

D. Pisum

Answer: B



Watch Video Solution

12. The decrease in the number of sperms in semen is calledx..... and is due to the insufficient amount ofy..... Select the correct option for X and Y .

A. X - Azoospermia Y - Hyaluronidase

B. X - Oligospermia Y - Acid phosphatase

C. X - Oligospermia Y - Testosterone

D. X - Oligospermia Y - Inhibin

Answer: C



Watch Video Solution

13. Which of the following matches is correct with regard to the fungi and its characteristics and the class given?

A. Phytophthora → Aseptate mycelium →

Basidiomycetes

B. Alternaria → Sexual reproduction absent →

Deuteromycetes

C. Mucor → Reproduction by conjugation →

Ascomycetes

D. Agaricus → Parasitic fungus →

Basidiomycetes

Answer: B



Watch Video Solution

14. Mammary gland of a woman is

A. a modified sweat gland

B. a primary sex organ

C. an exocrine gland

D. Both (a) and (c)

Answer: D



Watch Video Solution

15. Select the incorrect statement from the following.

A. Cytoskeleton are filamentous proteinaceous structure

B. Cytoskeleton provides mechanical support to the cell.

C. Cytoskeleton helps in motility and maintenance of shape of cell

D. Cytoskeleton also occurs in prokaryotic cell.

Answer: D



Watch Video Solution

16. Which of the following is an example of intergeneric hybridization ?

A. Dolly

B. Tracy

C. Hisardale

D. Mule

Answer: D



Watch Video Solution

17. Match the following and select the correct option for ribosomes and its constituent rRNA.

(i) 50 s (a) 16 s

(ii) 30 s (b) 18s

(iii) 40 s (c) 23 s

(iv) 60s (d) 5.8s

A. i –b, ii –d, iii– a, iv – a

B. i –c, ii –a, iii– b, iv – d

C. i –a, ii –b, iii– c, iv – d

D. i –d, ii –c, iii– a, iv – b

Answer: B



Watch Video Solution

18. Which of the following is not an intra-uterine contraceptive device ?

A. Multiload 375

B. Progestasert

C. Implants

D. Lippes loop

Answer: C



Watch Video Solution

19. Select the correct option for the following

(A) The cell cycle is divided into two basic phases

(i).....and (ii)

(B) During(iii) cell is metabolically active and continuously grows.

(C) Centrioles duplicate in the cytoplasm during

(iv)

A. (i) Interphase (ii) M- phase (iii) G1 phase (iv) S

phase

B. (i) G1 phase (ii) S - phase (iii) Interphase (iv) s

phase

C. (i) Interphase (ii) M- phase (iii) G2 phase (iv) G1

phase

D. (i) karyokinesis (ii) cytokinesis (iii) G1 phase (iv) S

phase

Answer: A



[Watch Video Solution](#)

20. The Reproductive and child Health care programme (RCH) in India were initiated in

A. 1951

B. 1971

C. 2000

D. 2003

Answer: A



[Watch Video Solution](#)

21. Ozone present in troposphere promotes

- A. Oxidation of biochemicals
- B. destruction of chlorenchyma
- C. both (a) and (b)
- D. growth of plants

Answer: C



Watch Video Solution

22. The effect of global warming includes ,

- (i) Increased capacity of air to accommodate moisture
- (ii) Altered wind movement pattern

(iii) Increased frequency of extreme events like floods ,
drought , etc.

(iv) Altered range of disease , vectors, pathogens , etc.

A. (i) only

B. (ii) and (iv)

C. (i) and (ii)

D. (i) , (ii), (iii) and (iv)

Answer: D



Watch Video Solution

23. Find out incorrect match between animals and their features .

A. Pseudocoelomates : Ancylostoma and Ascaris

B. Radiata : Asterias and Ascidia

C. Metagenesis : Obelia and physalia

D. Bioluminescence : pleurobranchia and
Ctenoplana

Answer: B



Watch Video Solution

24. Chemosynthetic bacteria are those bacteria which

- A. do not carry out photosynthesis
- B. synthesizes food without light
- C. are unable to carry out chemical reactions
- D. carry out synthesis food in the presence of light

Answer: B



Watch Video Solution

25. Which one of the following pair is related to midbrain of human ?

- A. Corpus callosum and Cruracerbri
- B. Corpora quadrigemina and Limbic system
- C. Association areas and Brain stem
- D. Cruracerbri and Corpora quadrigemina

Answer: D



Watch Video Solution

26. Which of the following is a common feature of
Ascidia , pristis , Hyla and Calotes ?

- A. Skeleton made up of cartilage and bone

B. Solid , dorsal and double nerve cord

C. Three chambered heart with closed circulatory system

D. Paired pharyngeal gill slits at least in embryonic stage

Answer: D



Watch Video Solution

27. Gustatory receptors are responsible to detect

A. Taste

B. Touch

C. Smell

D. All of the above

Answer: A



Watch Video Solution

28. Select the incorrect statement from the following.

A. The HGP was a 13 year project.

B. The fragments of DNA were sequenced using automated DNA sequence that worked on the

principle developed by sanger

C. The sequence of chromosome 1 was completed
in May 2003.

D. Less than 2% of the genome codes for protein .

Answer: C



Watch Video Solution

29. Which of the following is a single U shaped bone present at the base of a buccal cavity and is intended in the skull ?

A. Zygomatic

B. Hyoid

C. Mandible

D. Ethmoid

Answer: B



Watch Video Solution

30. Select the incorrect statement from the following.

A. More than 70 % of all species recorded are animals.

- B. Plants (including algae, fungi , bryophytes , pteridophytes , gymnosperms, and angiosperm) comprises no more than 22 % of the total .
- C. Among animals insects are the most species rich taxonomic group .
- D. Birds are less than the number of mammals .

Answer: D



Watch Video Solution

31. Biodiversity plays a major role in many ecosystem services that nature provides . This is related to which

reason for conservation of biodiversity ?

A. Narrowly utilitarian view

B. Broadly utilitarian view

C. both (A) and (B)

D. Ethical argument .

Answer: B



Watch Video Solution

32. Which of the following function or activity is not affected by smooth muscles in human ?

- A. Transportation of food through the digestive tract
- B. Transport of gametes through the genital duct
- C. Transportation of urine through the ureter and bladder
- D. Chewing and swallowing of food through buccal cavity .

Answer: D



Watch Video Solution

33. Select the incorrect match from the following option given in relation to the extinct organism and the name of the country .

A. Dodo - Mauritius

B. Quagga - Africa

C. Thylacine - Russia

D. Stellar sea cow - Russia

Answer: C



Watch Video Solution

34. Which of the following is incorrect for hormones ?

- A. They are chemical acts as intercellular messengers .
- B. They are non-nutrient chemicals .
- C. They are always produced in trace amounts .
- D. They are species - specific chemicals .

Answer: D



Watch Video Solution

35. Pomato is a

A. autotetraploid

B. developed by anther culture of potato.

C. Somatic hybrid development by protoplast

fusion of potato and tomato

D. biofortified variety of potato .

Answer: C



Watch Video Solution

36. Which of the following hormonal disorder is characterised by mental retardation , stunted growth

, low intelligence quotient and deaf mutism in growing baby ?

A. Cretinism

B. Myxoedema

C. Goitre

D. All of these

Answer: A



Watch Video Solution

37. What will be the percentage inheritance of a disorder from an X - linked diseases father to his son

?

A. 0 %

B. 25 %

C. 50 %

D. 100 %

Answer: A



Watch Video Solution

38. Read the following statements carefully (A - D) :

A . Thymosin hormone helps T -lymphocytes to provide cell-mediated immunity .

B. Calcitonin hormone increases blood calcium level and is hypercalcemic.

C. Melanin hormones from the pineal gland, regulate the 24 hours (diurnal) rhythm cycle.

D. Epinephrine and norepinephrine hormones are called catecholamines.

How many statements /s from above is /are correct ?

A. Four

B. Three

C. Two

D. one

Answer: C



[Watch Video Solution](#)

39. In angiosperms , the first cell from which the development of male gametophyte takes place is :

A. Pollen grain

B. Zygote

C. Microspore

D. PEC

Answer: C



[Watch Video Solution](#)

40. Find out the correct match about blood :

A. Formed elements : about 55% of the blood

B. Plasma : about 45% of the blood

C. Haemoglobin : about 12-16 gm per 100 ml of
blood

D. All of the above are correct match

Answer: C



Watch Video Solution

41. Considers the the following statements about

Cleistogamy :

(i) Reported in viola , Oxalis , Commelina.

(ii) Flowers are invariably automatous.

(iii) pollinators are required for seed set.

(iv) Anthesis is absent .

How many statements are incorrect ?

A. Four

B. Three

C. Two

D. One

Answer: D



Watch Video Solution

42. Which of the following statements is incorrect for ECG of human heart ?

- A. It is graphical representation of the electrical activity of the heart during a cardiac cycle.
- B. The ECG of a person is obtained by using a machine called electrocardiogram .
- C. To obtain a standard ECG , a patient is connected to the machine with three electrical

leads.

D. Each peak in the ECG is identified with a letter from P to T that corresponds to a specific electrical activity of the heart .

Answer: B



Watch Video Solution

43. Read the following five statements (A -E) and answer the question.

A. Pollination by water is more common amongst abiotic pollinating agent.

B . Pollination by water is quite rare in flowering plants.

C . Water hyacinth and water lily. The flowers emerge above the level of water and are pollinated by water.

D. Wind pollinated plants numerous flowers packed into an inflorescence.

E. Self incompatibility is an outbreeding device which prevents inbreeding .

How many of the above statement are correct ?

A. Four

B. One

C. Two

D. Three

Answer: D



Watch Video Solution

44. Match the following :

	Column I		Column II
I	Heart attack	(i)	Due to closure of atrio-ventricular valves
J	Lubb sound	(ii)	Heart muscle is suddenly damaged
K	Cardiac arrest	(iii)	Due to closure of semilunar valves
L	Dubb sound	(iv)	Heart stop pumping blood effectively
		(v)	Heart stop beating

A. I - ii, J - iii, K - iv , L - i

B. I - iv, J - i, K - v , L - iii

C. I - ii, J - i, K - v , L - iii

D. I - ii, J - i, K - iv , L - iii

Answer: C



Watch Video Solution

45. Apomixis is

A. a special mechanism to produced seed without fertilization .

B. a special mechanism y produced seed with fertilization .

C. mimics of sexual reproduction.

D. (A) and (C)

Answer: D



Watch Video Solution

46. Which of the following ions are actively secreted into the filtrate by tubular cells of nephron during urine formation ?

A. Glucose, amino acids , Na^+

B. H^+ , K^+ , aminoacids

C. Na^+ , H^+ , aminoacids

D. K^+ , H^+ ammonia

Answer: D



Watch Video Solution

47. Which type of endosperm is observed in the white kernel of coconut ?

- A. integument /seed coat
- B. Cellular endosperm
- C. nuclear endosperm
- D. filamentous mesocarp

Answer: B



Watch Video Solution



[Watch Video Solution](#)

48. Which of the following disease is called as protein energy malnutrition ?

- A. Marasmus
- B. Kwashiorkor
- C. Gaucher's disease
- D. Both (A) and (B)

Answer: D



[Watch Video Solution](#)

49. Choose the incorrect statement .

- A. The leaves in gymnosperms are well -adapted to withstand extremes of temperature , humidity and wind.
- B. In *Cycas*, male cone and megasporophylls are borne on the same tree but in *Pinus* male cones and female cones are borne on different trees.
- C. Pollination in gymnosperms is Carried by air.
- D. In gymnosperms male and female gametophyte do not have independent free-living existence.

Answer: B



Watch Video Solution

50. Find the odd one out with respect to the respiratory organ.

A. Blue whale

B. Tadpole of frog

C. Bony fish

D. Shark

Answer: A



Watch Video Solution

51. How many of the following are taxa? Dogs, Cats, Mammals, Wheat, Rice, Plant, Wood, Mango, Leaves, Jointed legs.

A. 5

B. 4

C. 3

D. 2

Answer: C



Watch Video Solution

52. A trait controlled by a gene at several loci is an example of

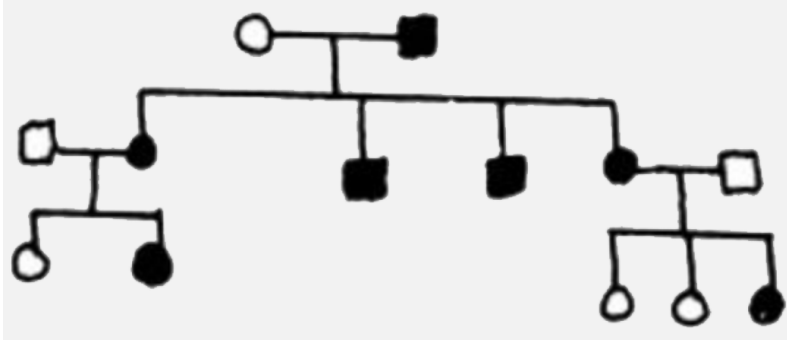
- A. Multiple allelism
- B. Incomplete dominance
- C. Pleiotropy
- D. Polygenic inheritance

Answer: D



Watch Video Solution

53. In the given pedigree, indicate whether the shaded symbols indicate dominant or recessive allele.



A. dominant

B. recessive

C. codominant

D. it can be both recessive or dominant

Answer: D



Watch Video Solution

54. Which of the following is the correct ascending order of all pulmonary volumes ?

A. $TV < RV < IRV < ERV$

B. $TV < ERV < RV < IRV$

C. $TV < RV < IRV < ERV$

D. $IRV > ERV > RV > TV$

Answer: B



Watch Video Solution

55. Leading strand is

- A. Chain of DNA which is continuously formed
- B. Formation of chain which polymerises in 3' to 5' direction
- C. Chain of DNA which is discontinuously formed
- D. Chain of DNA contains Okazaki fragments

Answer: A



Watch Video Solution

56. The first non-cellular form of life could have originated about years ago.

- A. About 3 billion years ago
- B. About 2 billion years ago
- C. About 4.5 billion years ago
- D. About 20 billion years ago

Answer: A



Watch Video Solution

57. The most commonly used bioreactor is

- A. Stirring type
- B. Shuttle based
- C. Dome type
- D. None of these

Answer: A



Watch Video Solution

58. Which of the following pair of evidences indicates the common ancestry ?

- A. Homologous organs&analogous organs

B. Homologous organs & vestigial organs

C. Analogous organs & vestigial organs

D. Both (A) and (C)

Answer: B



Watch Video Solution

59. Brewer's Yeast is

A. *Saccharomyces cariocanus*

B. *Saccharomyces florentinus*

C. *Saccharomyces cerevisiae*

D. *Saccharomyces spencerorum*

Answer: C



Watch Video Solution

60. Which of the following is not required in the preparation of a recombinant DNA molecules?

A. Restriction endonuclease

B. DNA ligase

C. DNA fragments

D. *E. coli*

Answer: D



Watch Video Solution

61. How many of the following organisms are associated with the production of single - cell protein ?

Yeast , Chlorella, Spirulina , Nostoc, Methylophilus methylotrophus, Mushroom, Clostridium

A. Two

B. Five

C. Four

D. Three

Answer: C



Watch Video Solution

62. Which of the following is not true about human evolution ?

A. About 15 mya , primates called Dryopithecus and Ramapithecus were existing

B. The first human - like being the hominid was called Homo habilis with brain capacity between

650 - 800cc.

C. During ice age between 75,000 - 10,000 years ago the modern Homo sapiens arose.

D. Pre - historic cave art were developed by ancestors of modern man around 10,000 years ago.

Answer: D



Watch Video Solution

63. Match the items in column I and column II and choose the correct option.

Column I

UV

Biodegradable organic matter

DDT

Phosphates

Column II

(i) Biomagnification

(ii) Eutrophication

(iii) Snow blindness

(iv) BOD

The correct match is :

A. A - ii, B - i, C - iv, D - iii

B. A - iii, B - ii, C - iv, D - i

C. A - iii, B - iv, C - i, D - ii

D. A - iii, B - i, C - iv, D - ii

Answer: C



Watch Video Solution

64. All the following statements are correct, except:

A. Retrovirus is commonly used as a vector for introducing a DNA fragment in human lymphocytes.

B. In India, the organisation responsible for assessing the safety of introducing genetically modified organisms for public use is GEAC.

C. The correct order of steps in polymerase chain reaction is denaturation , extension and annealing.

D. The DNA fragments separated on an agarose gel can be visualized after staining with ethidium bromide.

Answer: C



Watch Video Solution

65. If there are 99 bases in an mRNA that codes for a protein with 33 amino acids and the base at position 30 undergo nonsense mutation , then what will be the length of polypeptide formed ?

A. 11 amino acid long

B. 30 amino acid long

C. 9 amino acid long

D. 29 amino acid long

Answer: C



Watch Video Solution

66. Select the wrong statement from the following .

A. Cell wall is present in members of fungi and
Plantae.

B. Pseudopodia are locomotory and feeding structures in Sporozoans.

C. Chief producers in the oceans diatoms.

D. Mitochondria are the powerhous of the cell in all kingdoms except Monera.

Answer: B



Watch Video Solution

67. Which one of the following population interactions is widely used in medical science for the production of antibiotics ?

A. Commensalism

B. Parasitism

C. Mutualism

D. Amensalism

Answer: D



Watch Video Solution

68. Which of the following statement is incorrect ?

A. All enzymes for Kreb's cycle are present in mitochondrial matrix.

- B. In glycolysis, hydrogen acceptor is NAD, that can pick up hydrogen atoms.
- C. Glycolysis occurs in both aerobic and anaerobic respiration.
- D. Oxidative phosphorylation takes place in inner mitochondrial membrane and is organized as ETS.

Answer: A



Watch Video Solution

69. Which of the following is not the main function of the root system?

- A. Absorption of water and mineral from soil.
- B. Anchoring of plant in soil .
- C. Storage of food material and synthesis of plant growth regulator .
- D. It conducts water minerals and photosynthates , and helps in vegetative reproduction.

Answer: D



Watch Video Solution

70. How many plants in the list given below have marginal placentation ?

Mustard, Gram, Tulip, Asparagus, Arhar, Sun hemp,
Chilli, Colchicine, Onion, Moong, Pea, Tobacco, Lupin

A. Five

B. Six

C. Three

D. Four

Answer: B



Watch Video Solution

71. Match the following and choose the correct option.

	Group A		Group B
(A)	Pericarp	(i)	Without fertilization
(B)	Parthenocarpic fruit	(ii)	Ovary wall
(C)	Ovule	(iii)	Nutrition
(D)	Endosperm	(iv)	Seed

A. (A) - (i) , (B) - (ii) , (C) - (iii) , (D) - (iv)

B. (A) - (ii) , (B) - (i) , (C) - (iv) , (D) - (iii)

C. (A) - (iv) , (B) - (ii) , (C) - (i) , (D) - (iii)

D. (A) - (ii) , (B) - (iv) , (C) - (i) , (D) - (iii)

Answer: B



Watch Video Solution

72. The meristem that occurs in the mature regions of roots and shoots of many plants, particularly those that produce woody axis

- A. Intercalary meristem
- B. Apical meristem
- C. Secondary meristem
- D. All of above

Answer: C



Watch Video Solution

73. Read the following characteristics (I - IV) and identify the structure to which these features correspond

I. Cortex is made up of several layers of thin walled parenchyma cells without any intercellular spaces.

II Endoderm is made up of a single layer of barrel - shaped cells without any intercellular spaces.

III . Few layers of thick - walled parenachymatous cell forms pericycle.

IV. Pith is small or inconspicuous.

V. Conjunctive tissue present , and 2 to 4 xylem and phloem patches.

A. Dicot root

B. Dicot stem

C. Monocot root

D. Monocot stem

Answer: A



Watch Video Solution

74. Which of the following is incorrect about glycogen ?

A. It is a stored form of glucose in animals.

B. In glycogen , the right end is reducing and the left end is non - reducing .

C. It is a branched polymer of glucose.

D. It is a stored form of glucose in plants

Answer: D



Watch Video Solution

75. The bond present between two nucleotides is known as

A. Phosphoester linkage

B. Phosphodiester linkage

C. Glycosidic linkage

D. Peptide linkage

Answer: B



Watch Video Solution

76. The number of metabolic steps required for the oxidation of glucose to form lactic acid

A. 8

B. 9

C. 10

D. 11

Answer: D



Watch Video Solution

77. Internal factor affecting photosynthesis is / are :

A. Number and size of leaf

B. Age of leaf and orientation

C. Internal CO_2 concentration and amount of
chlorophyll

D. All the above

Answer: D



Watch Video Solution

78. Select the statement that is not correct from the following.

A. Plants which utilizes first , RuBP in CO_2 fixations are called C_3 plants.

B. Plants which utilizes first , PEP in CO_2 fixations are called C_2 plants.

C. CAM plants lack structural

compartmentalization of leaf , as found in C_4 plants .

D. C_4 photosynthetic pathway is more efficient than the C_3 pathway.

Answer: B



Watch Video Solution

79. Asexual reproduction is common among all except:

- A. unicellular organisms
- B. Plants with simple organization
- C. Animals with simple organization
- D. Animals with complex organization

Answer: D



Watch Video Solution

80. The limitation of ecological pyramids is

- A. it take into account the same species belonging to two or more trophic levels.

- B. it assumes a simple food chain that is most common in nature
- C. Saprophytes or decomposers occupy the lower level in the pyramid.
- D. None of the above

Answer: D



Watch Video Solution

81. In which of the following ecosystem, productivity is about 55 million tonnes ?

A. Forest

B. Grassland

C. Agroecosystem

D. Oceans

Answer: D



Watch Video Solution

82. Find the incorrect statement.

A. Biosphere is a global ecosystem.

B. Transfer of energy in ecosystem is explains in terms of food web and nutrient cycle.

C. Ecosystem is structural and not functional unit of nature.

D. Pond , lake and wetlands are aquatic ecosystem.

Answer: C



Watch Video Solution

83. In a population of an area, the difference in the natality rate and mortality rate is zero in a particular

year, but the population density has decreased. Which of the following may be the reason for this decrease ?

A. Number of immigrants $>$ Number of emigrants

B. Number of immigrants / Number of emigrants = 1

C. Number of immigrants $<$ Number of emigrants

D. Number of immigrants = Number of emigrants

Answer: C



Watch Video Solution

84. Which is not true for test cross ?

A. F_2 dihybrid test cross ratio 1:1:1:1.

B. It is performed know tha alleles of a gene in an individual.

C. A test cross is a type of back cross

D. Dominant offspring's in test cross is always homozygous.

Answer: D



Watch Video Solution

85. AGGTATCGCAT is a sequence from the coding strand of a gene. What will be the corresponding sequence of the transcribed mRNA?

A. AGGUACGCAU

B. ACCUAUCGAU

C. UGGTUTCGCAT

D. UCCAUAGCGUA

Answer: A



Watch Video Solution

86. Select the correct statements about a cockroach.

- A. The sclerites joined to each other by a thick ,
hard and non - flexible arthrodial membrane.
- B. Each thoracic segments bears a pair of flying
wings.
- C. In the cockroach, the fat body, nephrocytes and
urecose glands helps in excretion.
- D. A characteristic mushroom gland is present in
the 4 – 6th abdominal segments.

Answer: C





Watch Video Solution

87. In Bougainvillea and Citrus thorns are the modification of(i).....and in cactus spines are a modification of(ii).....

- A. (i) (ii)
Adventitious root Stem
- B. (i) (ii)
Stem Leaf
- C. (i) (ii)
Leaf Stem
- D. (i) (ii)
Stipules Flower

Answer: B



Watch Video Solution

88. Which of the following of the following statement related to Kreb's cycle is not correct ?

A. There is only reaction in Kreb's cycle where

FAD^+ is reduced to $FADH_2$

B. During conversion of succinyl CoA to succinic acid, a molecule of GTP is synthesized.

C. The cycle starts with reaction of acetyl CoA with pyruvic acid to form 6 C citric acid.

D. There are three reaction in the cycle where

NAD^+ is reduced to $NADH + H^+$

Answer: C



Watch Video Solution

89. The tissue lining the inner surface of hollow organ like a fallopian tube is

- A. Columnar epithelium
- B. Cuboidal epithelium
- C. Ciliated epithelium
- D. Brush bordered epithelium

Answer: C



Watch Video Solution

90. Which of the following statement is correct about reproduction in bacteria ?

- A. In bacteria reproduction occurs mainly by binary fission.
- B. Spores are formed under unfavorable condition in some bacteria only.
- C. Sexual reproduction occurs by a primitive type of transfer of DNA from one bacterium to another
- D. All of these

Answer: D



Watch Video Solution