



BIOLOGY

BOOKS - CENGAGE BIOLOGY (ENGLISH)

REPRODUCTIVE HEALTH

Exercises

1. Which of the following cannot be considered as an advantage of amniocentesis ?

- A. Prenatal diagnostics
- B. Detection of biochemical abnormalities
- C. Detection of congenital defects
- D. Determination of sex to abort female fetus

Answer: D



[Watch Video Solution](#)

2. Population growth rate depends upon

- A. Birth rate
- B. Death rate
- C. Immigration
- D. All of these

Answer: D



[Watch Video Solution](#)

3. Replacement level is the number of children a couple must produce to replace themselves so as to maintain population at zero growth level. The value of replacement level for developed countries is

- A. 2.7

B. 2.1

C. 1.9

D. 1.2

Answer: B



Watch Video Solution

4. Which of the following defines the stage of demographic transition ?

A. Birth rate is higher than death rate.

B. Death rate is higher than birth rate.

C. Birth rate and death rate are equal.

D. Both (1) and (2).

Answer: C



Watch Video Solution

5. The average number of children that would be borne by a female during her lifetime is called

- A. Natality
- B. Birth rate
- C. Population growth rate
- D. Total fertility rate

Answer: D



[Watch Video Solution](#)

6. Which of the following can be included under natural methods of birth control ?

- A. Rhythm method
- B. Coitus interruptus
- C. Lactational amenorrhoea

D. All of these

Answer: D



Watch Video Solution

7. Which of the following contraceptive devices also protect against sexually transmitted diseases ?

A. Fem shield

B. Sponge

C. IUDs

D. LNG-20

Answer: A



Watch Video Solution

8. Which of the following chemicals can be used under chemical methods for contraception ?

- A. Lactic acid
- B. Boric acid
- C. Citric acid
- D. All of these

Answer: D



[Watch Video Solution](#)

9. Which of the following is/are hormone-releasing IUDs ?

- A. Progestasert
- B. Levonorgestrel
- C. Both (1) and (2)
- D. Lippe's loop

Answer: C



Watch Video Solution

10. Which of the following can be included under emergency contraception ?

- A. An antiprogesterone pill
- B. Insertion of IUD within 72 h of unprotected sexual contact
- C. Both (1) and (2)
- D. Vasectomy

Answer: C



Watch Video Solution

11. "Norplant" is the new form of birth control and it

- A. Allows ovulation but does not allow fertilization
- B. Makes the cervical mucus thin making sperm entry into the uterus difficult
- C. Has progesterin as the active ingredient
- D. Is effective for a maximum of 1 year

Answer: C



Watch Video Solution

12. Which of the following is not included under barrier methods of birth control ?

- A. Vaginal pouch
- B. Diaphragm
- C. Cervical cap
- D. Implant

Answer: D



[Watch Video Solution](#)

13. Sexually transmitted diseases can get transmitted easily during the use of

- A. Diaphragm
- B. Cervical cap
- C. Birth control pills
- D. All of these

Answer: D



[Watch Video Solution](#)

14. The diaphragm is rubber-dome-shaped structure that stops the sperms from entering into

A. Vestibule

B. Vagina

C. Cervix

D. Both (1) and (2).

Answer: C



Watch Video Solution

15. Among the following methods, which one has the highest failure rate ?

A. Diaphragm with spermicide

B. Condom

C. Intra-uterine device

D. Rhythm method

Answer: D

 [Watch Video Solution](#)

16. In case of a person suffering from syphilis, chancre formation occurs during

- A. Primary stage
- B. Secondary stage
- C. Tertiary stage
- D. Neurosyphilis stage

Answer: A

 [Watch Video Solution](#)

17. The "symptomless" period or latent period in case of syphilis may last for

- A. 1 - 5 weeks

B. 6 - 24 weeks

C. 4 - 12 weeks

D. 20 years

Answer: D



[Watch Video Solution](#)

18. Which of the following STD and its causative agent is not correctly matched ?

A. Genital warts : Haemophilus ducrei

B. Syphilis : Treponema pallidum

C. Genital herpes : Type II Herpes simplex virus (HSV-2)

D. Trichomoniasis : Trichomonas vaginalis

Answer: A



[Watch Video Solution](#)

19. India was amongst the first countries in the world to initiate action plans and programs at a national level to attain reproductive health. These programs called "family planing" were initiated in _____ in India.

- A. 1951
- B. 1976
- C. 1901
- D. 1987

Answer: A



[Watch Video Solution](#)

20. All the following are use of amniocentesis, but one is a misuse. Which one is it ?

- A. the centers for genetic counseling offer amniocentesis on request to women for chromosome analysis.
- B. This technique has been developed for detecting fetal abnormalities by analyzing chromosomal defects.
- C. It is used to study the metabolic defects of fetus, e.g., PKU (phenylketonuria).
- D. It is done to examine the sex of the fetus leading to increasing female feticides.

Answer: D



Watch Video Solution

21. Which of the following is world's first non-hormonal oral contraceptive pill for females, developed by scientists at Central Drug Research Institute (CDRI) in Lucknow, India ?

A. Mala-D

B. Saheli

C. MORNING

D. PoP

Answer: A



Watch Video Solution

22. Which of the following is hormone-releasing IUD ?

A. Cu-T

B. LNG-20

C. Multiload 375

D. Implant

Answer: B



Watch Video Solution

23. Contraceptive pills are very effective with lesser side-effects and are well accepted by the females. They work by

A. Inhibiting ovulation

B. Inhibiting implantation

C. Altering the quality of cervical mucus to prevent/retard the entry of sperms

D. All of these

Answer: D



Watch Video Solution

24. Which of the following is a one-a-week pill with very few side-effects and high contraceptive value ?

A. Mala-D

B. Saheli

C. Depo-Provera

D. Norplant

Answer: B



[Watch Video Solution](#)

25. A sterilization technique in female which blocks gamete transport and thereby prevents conception is

A. Vasectomy

B. Copper-T

C. Condom

D. Tubectomy

Answer: D



[Watch Video Solution](#)

26. Surrogate mother is

- A. Mother without lactation
- B. Future mother with embryo implanted from another
- C. Carrying several embryos
- D. Artificially inseminated female

Answer: B



Watch Video Solution

27. The latest technique to produce a child is "GIFT". The full form is

- A. Gametic internal fertilization and transfer
- B. Gametic intra-fallopian transfer
- C. Gametic inter-fallopian transfer
- D. General internal fallopian transfer

Answer: B



Watch Video Solution

28. Test-tube baby is the one

- A. Who is reared on artificial medium outside the womb
- B. In which growth of human baby takes place inside the fallopian tube instead of uterus
- C. In which the ova from wife/donor (female) and sperms from husband/donor (male) are induced to form zygote by IVF and then implanted in female
- D. In which baby is born after artificial insemination

Answer: C



Watch Video Solution

29. Which of the following is the most appropriate statement of infertility ?

- A. Couple is unable to produce children in spite of unprotected sexual cohabitation.
- B. Infertility is defined as the inability to produce a viable offspring and is always due to defects/abnormalities in the female partner.
- C. Infertility is due to immature sex organs.
- D. Infertility cannot be helped by ART.

Answer: A

 [Watch Video Solution](#)

30. Which of the following STDs cannot be treated with antibiotics ?

- A. Gonorrhoea B. Syphilis
- C. Chlamydia D. Genital herpes

A. (D) only

B. (B) and (D)

C. (C) and (D)

D. (C) only

Answer: A



Watch Video Solution

31. At which stage of the ovarian cycle are mammalian eggs most likely to become fertilized ?

A. At the beginning of proliferative phase.

B. Immediately after ovulation.

C. During the middle of the secretory phase.

D. During the menstrual phase.

Answer: B

 [Watch Video Solution](#)

32. World population Day is

- A. 11th July
- B. 21 st September
- C. 7th April
- D. 1st July

Answer: A

 [Watch Video Solution](#)

33. MTPs are considered relatively safe up to ___ of pregnancy.

- A. 12 weeks
- B. 20 weeks
- C. 25 weeks

D. 18 weeks

Answer: A



Watch Video Solution

34. Most of the sexually transmitted diseases are completely curable if detected early and treated properly, except

- A. Hepatitis-B
- B. Genital herpes
- C. HIV infections
- D. All of these

Answer: D



Watch Video Solution

35. Which of the following causative agents of STDs can cross the placenta ?

A. Hepatitis-B

B. HIV

C. Syphilis

D. All of these

Answer: D



[Watch Video Solution](#)

36. Which of the following methods of birth control can cause excessive menstrual bleeding and pain ?

A. Condom

B. Cervical cap

C. Oral contraceptive

D. Intra-uterine device

Answer: D



[Watch Video Solution](#)

37. Which one is safest method of birth control ?

- A. The rhythm method
- B. Sterilization techniques
- C. Use of physical barriers
- D. Termination of unwanted pregnancy

Answer: B



[Watch Video Solution](#)

38. Purpose of tubectomy is to prevent

- A. Coitus
- B. Fertilization
- C. Egg formation
- D. Embryonic development

Answer: B



Watch Video Solution

39. Which of the following method of birth control is effective, easy to use, and less-expensive ?

- A. IUD
- B. Condom
- C. Implant
- D. Diaphragm

Answer: B

 [Watch Video Solution](#)

40. Which of the following are included in barrier method ?

- A. Condoms
- B. Diaphragms
- C. Cervical caps and vault
- D. All of these

Answer: D

 [Watch Video Solution](#)

41. In oogenesis, haploid egg is fertilized by sperm at which stage?

- A. Ovum
- B. Oogonium
- C. Primary oocyte

D. Secondary oocyte

Answer: D



[Watch Video Solution](#)

42. 1st polar body is formed at which stage of oogenesis?

A. 1 st meiosis

B. 2nd mitosis

C. 1 st mitosis

D. Differentiation

Answer: A



[Watch Video Solution](#)

43. Vitalogenesis occurs during the formation of

- A. Ootid in the fallopian tube
- B. Oogonial cell in the Graafian follicle
- C. Secondary oocyte in the fallopian tube
- D. Primary oocyte in the Graafian follicle

Answer: D

 [Watch Video Solution](#)

44. Fetal ejection reflex in human females is induced by

- A. Release of oxytocin from pituitary
- B. Fully developed fetus and placenta
- C. Differentiation of mammary glands
- D. Pressure exerted by amniotic fluid

Answer: B

 [Watch Video Solution](#)

45. Which of the following statement is correct ?

- A. Hormone releasing IUD make uterus unsuitable for implantation.
- B. IUDs are ideal contraceptives for females who want to delay pregnancy.
- C. IUD is the most widely accepted method of contraception in India.
- D. All the above.

Answer: D



[Watch Video Solution](#)

46. Which of the following can be used as an emergency contraceptive to avoid possible pregnancy ?

- A. Progestogens
- B. IUD, within 72 h

C. Diaphragms

D. (1) and (2)

Answer: D



[Watch Video Solution](#)

47. Which of the following statements is correct ?

A. MTP has a significant role in decreasing the population.

B. Government of India legalized MTP in 1977 with some strict conditions.

C. MTP is relatively safe during the first trimester.

D. All the above.

Answer: D



[Watch Video Solution](#)

48. Infertility cases due to the inability of male partner to inseminate the female are corrected by

- A. ZIFT
- B. GIFT
- C. Artificial insemination
- D. ICSI

Answer: C



Watch Video Solution

49. In vitro fertilization is a technique that involves transfer of which one of the following into the fallopian tube?

- A. Either zygote or early embryo up to 8 cell stage
- B. Embryo only, up to 8 cell stage
- C. Embryo of 32 cell stage

D. Zygote only

Answer: A



Watch Video Solution

50. Which of the following statement is not true with respect to tubectomy or tubal ligation ?

- A. It is more difficult than vasectomy and is even more difficult to reverse.
- B. No ovulation occurs, hence, no fertilization is possible.
- C. It involves ligation of both fallopian tube.
- D. The failure rate of this approach is almost zero percent.

Answer: B



Watch Video Solution

51. Which of the following hormone/s is/are maintained at high level during hormonal method of birth control ?

A. FSH

B. LH

C. Progestogens

D. Both (1) and (2).

Answer: C



[Watch Video Solution](#)

52. Injectable form of hormone-based contraceptive is

A. Norplant

B. Depo-Provera

C. Mala-D

D. Saheli

Answer: B



Watch Video Solution

53. In the rhythm method of birth control, the couple refrains from intercourse

- A. One day before and after ovulation
- B. Two days before and after ovulation
- C. Three day before and after ovulation
- D. One week before and after ovulation

Answer: C



Watch Video Solution

54. Which of the following method is used during abortion ?

- A. Vacuum aspiration
- B. Infusion of a saline solution
- C. Scraping
- D. All of these

Answer: D

 [Watch Video Solution](#)

55. The action of which of the following hormone is blocked during the use of RU 486 (mifepristone) ?

- A. FSH
- B. LH
- C. Progesterone
- D. hCG

Answer: C

 [Watch Video Solution](#)

56. Which of the following STD is not caused by a bacterium ?

- A. Chlamydia
- B. Gonorrhoea
- C. Syphilis
- D. Genital herpes

Answer: D

 [Watch Video Solution](#)

57. Which of the following cannot be taken as the symptom of a female suffering from gonorrhoea ?

- A. Inflammation of urethra with painful urination
- B. Discharge of pus from vagina

C. Inflammation of uterine tubes

D. Peritonitis or inflammation of the peritoneum

Answer: A



[Watch Video Solution](#)

58. Which of the following stage of syphilis is characterized by skin rash, fever and aches in joints and muscles ?

A. Primary stage

B. Secondary stage

C. Tertiary stage

D. Neurosyphilis stage

Answer: B



[Watch Video Solution](#)

59. The use of which of the following contraceptive device has increased in recent years due to its additional benefit of protecting the user from contracting STDs and AIDS ?

- A. Coitus interruptus
- B. IUDs (intra-uterine-devices)
- C. Condoms
- D. Vasectomy

Answer: C



[Watch Video Solution](#)

60. Which of the following have been found to be very effective as emergency contraceptives as they can be used to avoid possible pregnancy due to rape if given within 72 h?

- A. Administration of progestogens
- B. Progestogen - estrogen combination

C. IUDs

D. Condoms

A. (D) only

B. (A) and (B)

C. (A), (B) and (C)

D. (A), (B), (C) and (D)

Answer: C



Watch Video Solution

61. All the following statement about ZIFT are correct, but one is wrong.

Which one is wrong ?

A. It is zygote intra-fallopian transfer (ZIFT).

B. Zygote is transferred into the fallopian tube after IVF.

C. Early embryos up to 8 blastomers can also be transferred into the fallopian tubes.

D. Embryos with more than 8 blastomeres are also transferred into the fallopian tubes.

Answer: D

 [Watch Video Solution](#)

62. If a person is suffering from severe male infertility, in which the ejaculate contains very few sperms (oligozoospermia) or even no live sperm (azoospermia), it can be overcome by _____. This should offer couples an alternative to using donor sperm.

A. GIFT

B. ZIFT

C. ICSI

D. IVF

Answer: C



Watch Video Solution

63. Which of the following sexually transmitted diseases is caused by a protozoan?

- A. Gonorrhoea
- B. Trichomoniasis
- C. Chlamydiasis
- D. Syphilis

Answer: B



Watch Video Solution

64. Which of the following contraceptive is an injectable form of the "birth control pill hormones" that prevent ovulation ?

A. Norplant

B. Depo-Provera

C. Saheli

D. Mala-D

Answer: B



Watch Video Solution

65. Which of the following STDs is caused by the human papilloma virus (HPV) and is transmitted through intimate contact with infected person ?

A. Genital herpes

B. Genital warts

C. AIDS

D. Chlamydia

Answer: B

 [Watch Video Solution](#)

66. Norplant is

- A. A kind of plant
- B. A fertilizer factory
- C. A contraceptive
- D. A power generation plant

Answer: C

 [Watch Video Solution](#)

67. Which of the following is an important detection technique for syphilis ?

- A. Gram staining of the discharge
- B. Nucleic acid hybridization, PCR

C. Antibody detection, e.g., VDRL

D. Microscopic examination of culture

Answer: C



[Watch Video Solution](#)

68. Which of the following virus has dsDNA as the genetic material and is transmitted mainly by sexual contact ?

A. Hepatitis-A

B. Hepatitis-B

C. Hepatitis-C

D. All of these

Answer: B



[Watch Video Solution](#)

69. Which of the following drug is progesterone antagonist and acts as an abortion drug ?

- A. Saheli
- B. Mifepristone
- C. Mala-N
- D. Depo-Provera

Answer: B



[Watch Video Solution](#)

70. An important function of progesterone is:

1. prepare uterus for pregnancy
2. implantation of embryo
3. maintenance of pregnancy
4. stimulate ADH

A. (A) and (B) are correct

B. (B) and (D) are correct

C. (A) and (C) are correct.

D. (A), (B) and (C) are correct.

Answer: D



[Watch Video Solution](#)

71. Which hormone level reaches its peak during the luteal phase of menstrual cycle ?

A. Estrogen

B. Progesterone

C. Luteinizing hormone

D. Follicle stimulating hormone

Answer: B



[Watch Video Solution](#)

72. The 32-cells stage of the human embryo is

- A. Smaller than the fertilized egg
- B. Of the same size as the fertilized egg
- C. Two times the size of the fertilized egg
- D. Four times the size of the fertilized egg

Answer: B



[Watch Video Solution](#)

73. Which one of the following is the correct matching of the events occurring during menstrual cycle?

- A. Menstruation : Breakdown of myometrium and ovum not fertilized
- B. Ovulation : LH and FSH attain peak level and sharp fall in the secretion of progesterone

C. Proliferative : Rapid regeneration of myometrium and maturation of

Graafian phase follicle

D. Corpus luteum : Development of secretory phase and increased

secretion of progesterone

Answer: D



[Watch Video Solution](#)

74. RCH stands for

A. Routine check-up of health

B. Reproduction cum hygiene

C. Reversible contraceptive hazards

D. Reproduction and child healthcare

Answer: D



[Watch Video Solution](#)

75. What is true about "Saheli" ?

- (i) Developed at the CDRI, Lucknow
- (ii) Contains a steroidal preparation
- (iii) "Once-a-week" pill
- (iv) Many side effects
- (v) High contraceptive value
- (vi) Very few side effects
- (vii) Low contraceptive value

A. (i), (ii), (iii), (v), (vi)

B. (i), (iii), (v), (vi)

C. (ii), (iii), (iv), (v)

D. (i), (iii), (iv), (v)

Answer: B



Watch Video Solution

76. Amniocentesis is

- A. Digestion of amino acid
- B. Conversion of glucose to amino acids
- C. Taking out of cells near the fetus
- D. Killing of child before birth

Answer: C



[Watch Video Solution](#)

77. What is the function of copper-T ?

- A. Checks mutation
- B. Stop zygote formation
- C. Stops fertilization
- D. Stops obliteration of blastocoel

Answer: C



Watch Video Solution

78. AIDS was first reported in

- A. Russia
- B. USA
- C. Germany
- D. France

Answer: B



Watch Video Solution

79. Tubectomy prevents pregnancy by

- A. Preventing fertilization

- B. Preventing ovulation
- C. Altering FSH levels in ovary
- D. Altering LH levels in ovary

Answer: A



[Watch Video Solution](#)

80. Progesterone pill helps in preventing pregnancy by not allowing

- A. Ova formation
- B. Fertilization
- C. Implantation
- D. None of these

Answer: A



[Watch Video Solution](#)

81. Oral contraceptive pills function by

- A. Inhibiting ovulation
- B. Stimulating ovulation
- C. Stimulating the motility and secretory activity of oviduct
- D. None of the above

Answer: A



[Watch Video Solution](#)

82. The most important component of oral contraceptive pills is

- A. Progesterone - estrogen
- B. Growth hormone
- C. Thyroxine
- D. Luteinizing hormone

Answer: A



Watch Video Solution

83. Amniocentesis is a technique to

- A. Determine any disease in heart
- B. Determine any hereditary disease in the embryo
- C. Know about the disease of brain
- D. Grow cell on culture medium

Answer: B



Watch Video Solution

84. Which of the following is a technique of direct introduction of gametes into the oviduct ?

A. MTS

B. ET

C. IVF

D. POST

Answer: C



Watch Video Solution

85. Syphilis is caused by

A. *Treponema pallidum*

B. *Plasmodium*

C. *Neisseria gonorrhoea*

D. *Entamoeba histolytica*

Answer: A



Watch Video Solution

86. Gonorrhoea is caused by

- A. *Treponema pallidum*
- B. *Entamoeba gingivalis*
- C. *Mycobacterium leprae*
- D. *Neisseria gonorrhoeae*

Answer: D



Watch Video Solution

87. Which is non-invasive technique of genetic counseling ?

- A. Amniocentesis
- B. Chorionic biopsy
- C. Fetal blood sampling

D. Ultrasonography

Answer: D



[Watch Video Solution](#)

88. Which one of the following organisms cause syphilis ?

A. *Neisseria gonorrhoeae*

B. *Treponema pallidum*

C. *Pasteurella pestis*

D. *Clostridium botulinum*

Answer: B



[Watch Video Solution](#)

89. The common means of transmission of AIDS is

A. Sexual intercourse

B. Blood transfusion

C. Placental transfer

D. All of these

Answer: D



[Watch Video Solution](#)

90. AIDS is transmitted

A. Sexually

B. Parentally

C. Vertically

D. All of these

Answer: D



[Watch Video Solution](#)

91. Which is the causal agent for syphilis ?

- A. Haemophilus ducreyi
- B. Treponema pallidum
- C. Chlamydia trachomatis
- D. All of the above

Answer: B



Watch Video Solution

92. Component of oral pills is

- A. Progesterone
- B. Oxytocin
- C. Relaxin

D. None of these

Answer: A



Watch Video Solution

93. Contraceptive oral pills help birth control by

A. Preventing ovulation

B. Killing the sperms

C. Forming barriers between sperms-ova

D. Killing the ova

Answer: B



Watch Video Solution

94. GIFT involves transfer of

- A. A mixture of sperms and ova into the uterus
- B. Embryo into the uterus
- C. A mixture of sperms and ova into the fallopian tube
- D. Zygote into the fallopian tube

Answer: C

 [Watch Video Solution](#)

95. In the production of test tube baby

- A. Fertilization and fetus formation is external
- B. Fertilization and fetus formation is internal
- C. Fertilization is internal and fetus formation is external
- D. Fertilization is external and fetus formation is internal

Answer: D

 [Watch Video Solution](#)

96. The first case of IVF-ET technique success, was reported by

- A. Louis Joy Brown and Banting Best
- B. Patrick Steptoe and Robert Edwards
- C. Robert Steptoe and Gilbert Brown
- D. Baylis and Starling Taylor

Answer: B



[Watch Video Solution](#)

97. Which of the following is a mechanical barrier used in birth control ?

- A. Loop
- B. Dalkon shield
- C. Copper-T

D. Diaphragm

Answer: D



[Watch Video Solution](#)

98. Which of the following birth control measures can be considered as the safest ?

- A. The rhythm method
- B. The use of physical barriers
- C. Termination of unwanted pregnancy
- D. Sterilization techniques

Answer: D



[Watch Video Solution](#)

99. A sexually transmitted disease symptomised by the development of chancre on the genitals caused by the infection of

- A. Treponema pallidum
- B. Neisseria gonorrhoeae
- C. Human immuno deficiency virus
- D. Hepatitis B virus

Answer: A



[Watch Video Solution](#)

100. Surgical removal of vas deferens is called

- A. Tubectomy
- B. Vasectomy
- C. Vasectolysis
- D. None of these

Answer: B



[Watch Video Solution](#)

101. Aminocentesis is a technique used to

- A. Determine errors in amino acid metabolism in embryo
- B. Pinpoint specific cardiac ailments in embryo
- C. Determine any hereditary genetic abnormality in embryo
- D. All of the above

Answer: C



[Watch Video Solution](#)

102. Oral contraceptives are prescribed in females to check

- A. Entry of sperms in vagina

B. Implantation

C. Ovulation

D. Fertilization

Answer: C



[Watch Video Solution](#)

103. Which one of the following is a sexually transmitted disease ?

A. Cancer

B. Syphilis

C. Diphtheria

D. Myocarditis

Answer: B



[Watch Video Solution](#)

104. The status of the fetus for genetic counseling can be determined by

- A. Amniocentesis
- B. Aminoacidopathy
- C. Foetocentesis
- D. All of these

Answer: A



Watch Video Solution

105. Test which is misused for sex identification of an unborn baby is

- A. Clotting test
- B. Amniocentesis
- C. Erythroblastosis
- D. Angiogram

Answer: B



[Watch Video Solution](#)

106. Amniocentesis detects

- A. Deformity in brain
- B. Deformity in heart
- C. Hereditary disease
- D. All of these

Answer: D



[Watch Video Solution](#)

107. Which of the following is a method of birth control?

- A. IUD

B. GIFT

C. HTF

D. IVF-ET

Answer: A



Watch Video Solution

108. Tubectomy

A. Prevents implanatation

B. Prevents fetal development

C. Prevents fertilization

D. All of the above

Answer: C



Watch Video Solution

109. The present population of the world is about

- A. 500 million
- B. 100 million
- C. 15 billion
- D. 6 billion

Answer: D



Watch Video Solution

110. GIFT is

- A. Embryo implantation after in vivo fertilization
- B. Sperm injection for in vivo fertilization
- C. Embryo implantation after in vitro fertilization
- D. Egg implantation for in vivo fertilization

Answer: B



[Watch Video Solution](#)

111. Copper-T acts by

- A. Suppression of fertilization by forming a membrane
- B. Disturbing the site of implanaton of blastocyst
- C. Acting as a barrier
- D. None of these

Answer: B



[Watch Video Solution](#)

112. Each couple should produce only two children which will help in

- A. Checking pollution

B. Stabilizing the ecosystem

C. Fertility of soil

D. Improving food-web

Answer: B



[Watch Video Solution](#)

113. Amniocentesis has helped

A. The childless couples

B. In establishment of biological superiority of females

C. In waste of money

D. N/A

Answer: B



[Watch Video Solution](#)

114. The technique which makes use of amniotic fluid for the detection of prenatal disorder is called

- A. Laparoscopy
- B. Amniocentesis
- C. Endoscopy
- D. Ultrasound

Answer: B



[Watch Video Solution](#)

115. In vitro fertilization is a technique that involves the transfer of which one of the following into the fallopian tube ?

- A. Zygote only
- B. Embryo only, up to 8 cell stage
- C. Either zygote or early embryo up to 8 cell stage

D. Embryo of 32 cell stage

Answer: C



Watch Video Solution

116. Cu ions released from copper-releasing intra uterine devices (IUDs)

- A. Prevent ovulation
- B. Make uterus unsuitable for implantation
- C. Increase phagocytosis of sperms
- D. Suppress sperm motility

Answer: D



Watch Video Solution

117. Which of the following cannot be considered as assisted reproductive technology

- A. In vitro fertilization (IVF)
- B. Medical termination of pregnancy (MTP)
- C. Gamete intra-fallopian transfer (GIFT)
- D. Intra-cytoplasmic sperm injection (ICSI)

Answer: B



Watch Video Solution

118. Which of the following statements is correct with reference to a test tube baby ?

- A. Fertilization of egg is completed outside the body, the fertilized egg is then placed in the womb of the mother where gestation is completed.

- B. Fertilization of egg is complete in the female genital tract. It is then taken out and grown in a large test tube.
- C. A prematurely born baby is reared in an incubator.
- D. Fertilization of egg and growth of embryo is completed in a large test tube.

Answer: A



Watch Video Solution

119. A test-tube baby means

- A. Fertilization and development both in uterus
- B. Fertilization in vitro and then transplantation in uterus
- C. A baby grown in test tube
- D. Fertilized and developed embryo in test tube

Answer: B



[Watch Video Solution](#)

120. What is the work of copper-T ?

- A. To inhibit ovulation
- B. To inhibit fertilization
- C. To inhibit implantation of blastocyst
- D. To inhibit gametogenesis

Answer: B



[Watch Video Solution](#)

121. What is the work of progesterone which is present in oral contraceptive pills ?

- A. To inhibit ovulation
- B. To check oogenesis

C. To check entry into cervix and to make them inactive

D. To check sexual behavior

Answer: A



[Watch Video Solution](#)

122. Which is showing accurate pairing ?

A. Syphilis - *Treponema pallidum*

B. AIDS - *Bacillus conjugalis*

C. Gonorrhoea - *Leishmania donovani*

D. Typhoid - *Mycobacterium leprae*

Answer: A



[Watch Video Solution](#)

123. Test tube baby means a baby born when

- A. It is developed in a test tube
- B. It is developed through tissue culture method
- C. The ovum is fertilized externally and the egg is thereafter implanted in the uterus
- D. It develops from a non-fertilized egg

Answer: C



Watch Video Solution

124. Consider the statements given below regarding contraception and answer as directed thereafter:

- (1) Medical Termination of Pregnancy (MTP) during first trimester is generally safe
- (2) Generally chances of contraception are nil until mother breast-feeds the infant upto two years

(3) Intrauterine devices like copper-T are effective contraceptives

(4) Contraceptive pill may be taken upto one week after coitus to prevent conception

A. (A), (C)

B. (A), (B)

C. (B), (C)

D. (C), (D)

Answer: A



[Watch Video Solution](#)

125. Given below are four methods (A-D) and their modes of action (i-iv) in achieving contraception. Select their correct matching from the four options that follow

Method		Mode of Action
A. Oral pill	(i)	Prevents sperms reaching cervix
B. Condom	(ii)	Suppresses sperm motility
C. Vasectomy	(iii)	Prevents ovulation
D. Copper T	(iv)	Semen contain no sperms

A. $1 - (c), 2 - (d), 3 - (a), 4 - (b)$

B. $1 - (b), 2 - (c), 3 - (a), 4 - (d)$

C. $1 - (c), 2 - (a), 3 - (d), 4 - (b)$

D. $1 - (d), 2 - (a), 3 - (b), 4 - (c)$

Answer: C



Watch Video Solution

126. The permissible use of the technique aminocentesis is for

A. Detecting any genetic abnormality

B. Detecting sex of the unborn fetus

C. Artificial insemination

D. Transfer of embryo into the uterus of a surrogate mother

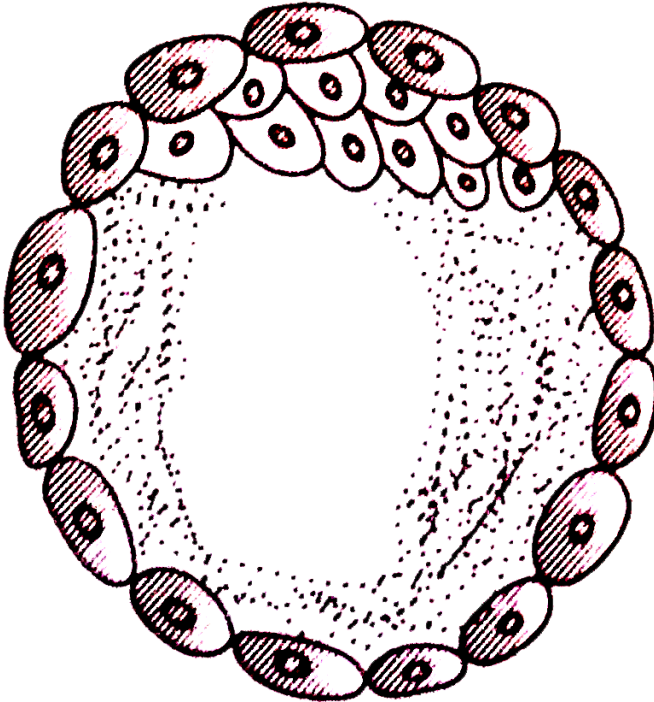
Answer: A



Watch Video Solution

127. Identify the human developmental stage shown in the figure as well as the related right place of its occurrence in a normal pregnant woman.

Select the right option for the two together.



- | | | |
|----|---------------------|-------------------------------|
| A. | Developmental stage | Site of occurrence |
| | Late morula | Middle part of fallopian tube |
| B. | Developmental stage | Site of occurrence |
| | Blastula | End part of fallopian tube |
| C. | Developmental stage | Site of occurrence |
| | Blastocyst | Uterine wall |

- | | | |
|----|---------------------|----------------------------------|
| D. | Developmental stage | Site of occurrence |
| | 8-celled morula | Starting point of fallopian tube |

Answer: C



[Watch Video Solution](#)

128. Artificial insemination means

- A. artificial introduction of sperms of a healthy donor into the vagina
- B. introduction of sperms of a healthy donor directly into the ovary
- C. Transfer of sperms of husband to a test tube containing ova.
- D. Transfer of sperms of a healthy donor to a test tube containing ova

Answer: D



[Watch Video Solution](#)

129. Which one of the following statements is correct regarding sexually transmitted infections (STIs) ?

- A. A person may contact syphilis by sharing milk with one already suffering from the disease.
- B. Haemophilia is one of the STDs.
- C. Genital herpes and sickle-cell anaemia are both STDs.
- D. The chances of a 5-years boy contacting a STD are very little.

Answer: D



Watch Video Solution

130. Consider the following statements and select the option stating which ones are true (T) and which ones are false (F)

- (i) There are many side effects of tubectomy and vasectomy
- (ii) Purpose of tubectomy is to prevent egg formation
- (iii) Contraceptive oral pills help in birth control by preventing ovulation

(iv) Genital warts is a sexually transmitted disease caused by herpes virus

(v) In India, there is rapid decline in infant mortality rate and MMR.

A. (i) (ii) (iii) (iv) (v)
T F T F F

B. (i) (ii) (iii) (iv) (v)
F F F T T

C. (i) (ii) (iii) (iv) (v)
T T T T T

D. (i) (ii) (iii) (iv) (v)
F F T F T

Answer: D



Watch Video Solution

131. Match Column-I with Column-II and select the correct option from the codes given below.

Column-I

(A) Syphilis

(B) GIFT

(C) AIDS

(D) Genital warts

Column-II

(i) Human papilloma virus

(ii) Haemophilus ducreyi

(iii) Treponema pallidum

(iv) HIV

A. (iii) (ii) (iv) (i)

B. (ii) (i) (iii) (iv)

C. (iv) (ii) (i) (iii)

D. (i) (iv) (iii) (ii)

Answer: A



Watch Video Solution

132. Which of the following statements is/are correct ?

A. Hepatitis B virus (HBV) can be transmitted through blood transfusion, sexual contact, tears, intravenous drug abuse, tattooing, ear and nose piercing, sharing of razors, etc.

B. Hepatitis B virus vaccine is the second generation vaccine produced from transgenic yeast by recombinant DNA technology.

C. Hepatitis B virus vaccine is the first commercially available human vaccine produced by genetic engineering.

D. All of these.

Answer: D



Watch Video Solution

133. What is true for lactational amenorrhea ?

- (i) It means absence of menstruation
- (ii) Ovulation does not occur during the lactational period
- (iii) Chances of contraception are almost nil upto six months following parturition
- (iv) Side effects are almost nil
- (v) Contraceptive efficiency reduces after the period of intense lactation
- (vi) It is natural method of contraception
- (vii) It increases phagocytosis of sperms

A. (ii), (iii), (iv), (v), (vi)

B. (i), (ii), (iii), (iv)

C. (ii), (iii), (iv), (v), (vii)

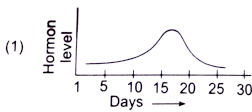
D. (i), (ii), (iii), (iv), (v), (vi)

Answer: D

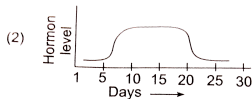


Watch Video Solution

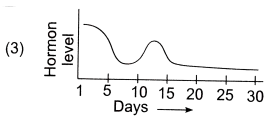
134. Which of the following graph is the correct representation of the level of progesterone in a female who has been using Mala-D as a method of birth control ?



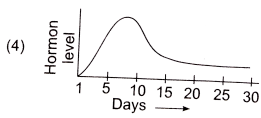
A.



B.



C.



D.

Answer: A

 **Watch Video Solution**

135. Which of the following option is correct ?

- | | (A) Saheli-A | (B) Mala-D | (C) Quinestrol |
|-----|---------------------|-------------------|-----------------------|
| (1) | Weekly oral pill | Daily oral pill | Monthly oral pill |
| (2) | Daily oral pill | Weekly oral pill | Monthly oral pill |
| (3) | Monthly oral pill | Daily oral pill | Weekly oral pill |
| (4) | Weekly oral pill | Monthly oral pill | Daily oral pill |

 **Watch Video Solution**

136. Pick up the odd one in each series and select the correct option :

(i) Diaphragms, Cervical caps, Vaultes, Tubectomy

(ii) Lippes loop, LNG-20, IUDs, Multiload-375

(iii) Gonorrhoea, Jaundice, Hepatitis-B, Syphilis

(iv) MTP, ZIFT, GIFT

(v) Saheli, Mala-D, Implants, Lactational amenorrhoea

src="https://d10lp6p6x60nq.cloudfront.net/physics_images/CEN_BIO_P2_C04_

width="80%"gt



[Watch Video Solution](#)

137. Different types of assisted reproductive techniques are given below ?

(a) ZIFT (b) IUT

(c) ICSI (d) GIFT

(e) AI

Select the correct type of fertilisation in the above techniques :

A. In vitro $\rightarrow d, b, c$ In vivo $\rightarrow a, e$

B. In vitro $\rightarrow a, b, c$ In vivo $\rightarrow d, e$

C. In vitro $\rightarrow d, e$ In vivo $\rightarrow d, b, c$

D. In vitro $\rightarrow a, c, e$ In vivo $\rightarrow b, d$

Answer: B



Watch Video Solution

138. Consider the following statements and select the option stating which ones are true (T) and which ones are false (F)

- (i) There are many side effects of tubectomy and vasectomy
- (ii) Purpose of tubectomy is to prevent egg formation
- (iii) Contraceptive oral pills help in birth control by preventing ovulation
- (iv) Genital warts is a sexually transmitted disease caused by herpes virus
- (v) In India, there is rapid decline in infant mortality rate and MMR.

A. i ii iii iv v
 T *F* *T* *F* *F*

B. i ii iii iv v
 F *F* *F* *T* *T*

C. i ii iii iv v
 T *T* *T* *F* *F*

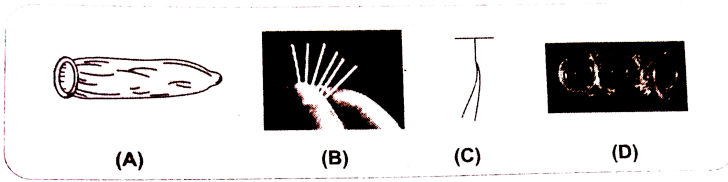
D. i ii iii iv v
 F *F* *T* *F* *T*

Answer: D



Watch Video Solution

139. Identify the figure of the contraceptive given below and select the correct option :



- | | (A) | (B) | (C) | (D) |
|-----|-------------------|---------|-------------------|-------------------|
| (1) | Condom for female | Implant | CuT | Condom for male |
| (2) | Implant | CuT | Condom for female | Condom for male |
| (3) | Condom for male | CuT | Implant | Condom for female |
| (4) | Condom for male | Implant | CuT | Condom for female |

[▶ Watch Video Solution](#)

140. Match Column-I with Column-II and select the correct option from the codes given below.

Column-I**Column-II**

- | | |
|-------------------|---------------------------|
| (A) Syphilis | (i) Human papilloma virus |
| (B) GIFT | (ii) Haemophilus ducreyi |
| (C) AIDS | (iii) Treponema pallidum |
| (D) Genital warts | (iv) HIV |

A.

$A - (i), B - (ii), (iv), (ix), C - (iii), (vi), D - (vii), (vii), E - (v)$

B.

$A - (i), B - (ii), C - (iii), (vi), (ix), D - (vii), (viii), E - (v)$

C.

$A - (i), B - (ii), (iv), (ix), C - (iii), (ix), D - (vii), (viii) E - (v)$

D.

$A - (i), B - (iv), (ix), C - (ii), (iii), (vi), D - (vii), (viii), E - (v)$

Answer: A



Watch Video Solution

141. Select the correct option regarding contraceptive method :

	(i)	(ii)	(iii)	(iv)
(1)	Barrier	Coitus inter-rupts	Periodic abstinence	Lactational amenorrhoea
(2)	IUDs	Lactational amenorrhoea	Coitus inter-rupts	Periodic abstinence
(3)	Natural	Periodic abstinence	Coitus inter-rupts	Lactational amenorrhoea
(4)	Surgi-cal	Periodic abstinence	Coitus inter-rupts	Lactational amenorrhoea



[Watch Video Solution](#)

142. Given below are four statement (a-d) regarding assisted reproductive technologies :

Select the option which include one only :

(a) ZIFT - The zygote or early correct one (only blastomere) transferred into the fallopian tube

(b) ICSI - A sperm is directly injected into the fallopian tube to form an embryo in the laboratory

(c) IUI - The semen collected either from the husband or healthy donor is artificially introduced either into the vagina or into the uterus

(d) GIFT - Transfer of zygote collected from a donor into the fallopian tube of another female who cannot produce one but can provide suitable environment for fertilisation and development.

A. Statement (b), (c) and (d)

B. Statement (a), (c)

C. Statement (c), (d)

D. Statement (a), (c) and (d)

Answer: B



Watch Video Solution

143. Assertion : Population of India crossed 1 billion in May 2000.

Reason : It is the result of rapid decline in death rate, maternal mortality rate (MMR), and infant mortality rate (IMR) as well as an increase in the number of people in reproductive age.

- A. If both Assertion and Reason are true but the reason is the correct explanation of the assertion, then mark (1).
- B. If both Assertion and Reason are true but the reason is not the correct explanation of the assertion, then mark (2).
- C. If Assertion is true but Reason is false, then mark (3).
- D. If both Assertion and Reason are false, then mark (4).

Answer: A



Watch Video Solution

144. Assertion : Intra-uterine devices (IUDs) are very effective contraceptive method.

Reason : IUDs do not allow sperms to enter uterus.

- A. If both Assertion and Reason are true but the reason is the correct explanation of the assertion, then mark (1).

B. If both Assertion and Reason are true but the reason is not the correct explanation of the assertion, then mark (2).

C. If Assertion is true but Reason is false, then mark (3).

D. If both Assertion and Reason are false, then mark (4).

Answer: C

 [Watch Video Solution](#)

145. Assertion : Surgical method blocks gamete transport and thereby prevents conception.

Reason : Surgical method used in males for this purpose is called vasectomy.

A. If both Assertion and Reason are true but the reason is the correct explanation of the assertion, then mark (1).

B. If both Assertion and Reason are true but the reason is not the correct explanation of the assertion, then mark (2).

C. If Assertion is true but Reason is false, then mark (3).

D. If both Assertion and Reason are false, then mark (4).

Answer: B



Watch Video Solution

146. Assertion : Saheli - the new oral contraceptive for females - contains a non-steroidal preparation.

Reason : It is "once-a-week" pill with very few side-effects and high contraceptive value.

A. If both Assertion and Reason are true but the reason is the correct explanation of the assertion, then mark (1).

B. If both Assertion and Reason are true but the reason is not the correct explanation of the assertion, then mark (2).

C. If Assertion is true but Reason is false, then mark (3).

D. If both Assertion and Reason are false, then mark (4).

Answer: B



Watch Video Solution

147. Assertion : In test-tube baby program, ova from wife/donor (female) and sperms from husband/donor (male) are collected and are induced to form zygote under simulated conditions in laboratory.

Reason : Embryos with more than 8 blastomeres are then transferred to fallopian tube (ZIFT) to complete its further development.

- A. If both Assertion and Reason are true but the reason is the correct explanation of the assertion, then mark (1).
- B. If both Assertion and Reason are true but the reason is not the correct explanation of the assertion, then mark (2).
- C. If Assertion is true but Reason is false, then mark (3).
- D. If both Assertion and Reason are false, then mark (4).

Answer: C



[Watch Video Solution](#)

148. Assertion : Surgical methods of contraception are practiced to space two successive conceptions.

Reason : During surgical methods, ovaries from females or testes from males are removed.

- A. If both Assertion and Reason are true but the reason is the correct explanation of the assertion, then mark (1).
- B. If both Assertion and Reason are true but the reason is not the correct explanation of the assertion, then mark (2).
- C. If Assertion is true but Reason is false, then mark (3).
- D. If both Assertion and Reason are false, then mark (4).

Answer: D



[Watch Video Solution](#)

149. Assertion : Natural methods are based on menstrual cycle and the life of sperms

Reason : Natural methods often fail to contracept.

- A. If both Assertion and Reason are true but the reason is the correct explanation of the assertion, then mark (1).
- B. If both Assertion and Reason are true but the reason is not the correct explanation of the assertion, then mark (2).
- C. If Assertion is true but Reason is false, then mark (3).
- D. If both Assertion and Reason are false, then mark (4).

Answer: A



[Watch Video Solution](#)

150. Assertion : Sexually transmitted diseases get transmitted from the infected to the normal person, only during sexual contact.

Reason : All sexually transmitted diseases can be cured by antibiotics.

- A. If both Assertion and Reason are true but the reason is the correct explanation of the assertion, then mark (1).
- B. If both Assertion and Reason are true but the reason is not the correct explanation of the assertion, then mark (2).
- C. If Assertion is true but Reason is false, then mark (3).
- D. If both Assertion and Reason are false, then mark (4).

Answer: D



Watch Video Solution

151. Assertion : In 1900, world population was 2000 million.

Reason : Indian population crossed 2000 million mark in May 2000.

- A. If both Assertion and Reason are true but the reason is the correct explanation of the assertion, then mark (1).

B. If both Assertion and Reason are true but the reason is not the correct explanation of the assertion, then mark (2).

C. If Assertion is true but Reason is false, then mark (3).

D. If both Assertion and Reason are false, then mark (4).

Answer: C

 [Watch Video Solution](#)

152. Assertion : Marriageable age of Indian females and males is 18 years and 21 years, respectively.

Reason : Under normal conditions, a girl child will release around 450 ova in her lifetime.

A. If both Assertion and Reason are true but the reason is the correct explanation of the assertion, then mark (1).

B. If both Assertion and Reason are true but the reason is not the correct explanation of the assertion, then mark (2).

C. If Assertion is true but Reason is false, then mark (3).

D. If both Assertion and Reason are false, then mark (4).

Answer: C



Watch Video Solution

Archives

1. Multiple choice questions (MCQs)

choose the correct option

Given below are four methods (A-D) and their modes of action (a-d) in achieving contraception. Select their correct matching from the four

options that follow

Method	Mode of Action
A. The pill	I Prevents sperm reaching cervix
B. Condom	II Prevents implantation
C. Vasectomy	III Prevents ovulation
D. Copper-T	IV Semen contains no sperms

A. A-(iii), B-(iv), C-(i), D-(ii)

B. A-(ii), B-(iii), C-(i), D-(iv)

C. A-(iii), B-(i), C-(iv), D-(ii)

D. A-(iv), B-(i), C-(ii), D-(iii)

Answer: C



Watch Video Solution

2. Cu ions released from copper releasing intrauterine devices (IUDs)

A. make uterus unsuitable for implantation

B. increase phagocytosis of sperms

C. suppress sperm motility

D. Prevent ovulation

Answer: C



Watch Video Solution

3. Medical Termination of pregnancy (MTP) is considered safe up to how many weeks of pregnancy

A. Six weeks

B. Eight weeks

C. Twelve weeks

D. Eighteen weeks

Answer: C



[Watch Video Solution](#)

4. Which of the following is the most widely accepted method of contraception in india at present ?

A. IUD's (Intra uterine devices)

B. Cervical caps

C. Tubectomy

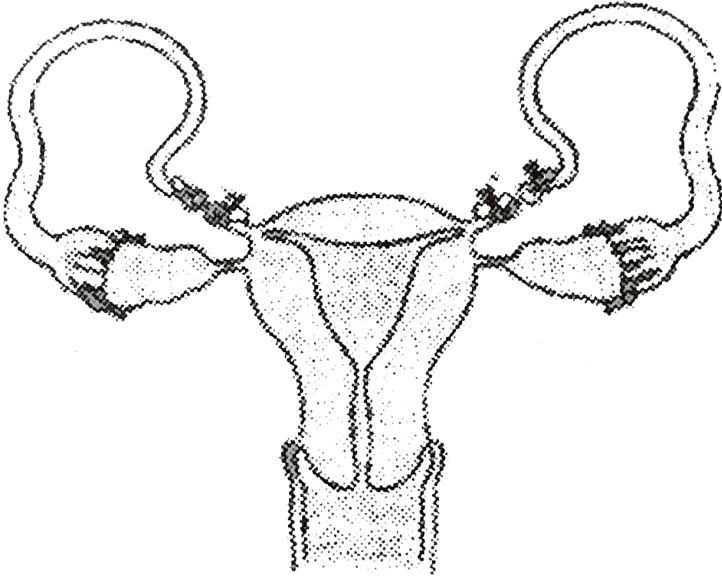
D. Diaphragms

Answer: A



[Watch Video Solution](#)

5. What is the figure given below showing in particular ?



- A. Uterine cancer
- B. Tubectomy
- C. Vasectomy
- D. Ovarian cancer

Answer: B



Watch Video Solution

6. The test-tube baby programme employs which one of the following techniques ?

- A. Intra-utrine insemination (IUI)
- B. Gamete intral-fallopian transfer (GIFT)
- C. Zygote intra-fallopian transfer (ZIFT)
- D. Intra - cytoplasmic sperm injection (ICSI)

Answer: C



[Watch Video Solution](#)

7. One of the legal methods of birth control is

- A. By abstaining from coitus from day 10 to 17 of the menstrual cycle
- B. By having coitus at the time of day break
- C. By premature ejaculation during coitus
- D. Abortion by taking an appropriate medicine

Answer: D



[Watch Video Solution](#)

8. Artificial insemination means

- A. Transfer of sperms of husband to a test tube containing ova
- B. Artificial introduction of sperms of a healthy donor into the vagina
- C. Introduction of sperms of a healthy donor directly into the ovary
- D. Transfer of sperms of a healthy donor to a test tube containing ova

Answer: C



[Watch Video Solution](#)

9. Which of the following cannot be detected in a developing foetus by amniocentesis?

A. Klinefelter syndrome

B. Sex of the foetus

C. Down syndrome

D. Jaundice

Answer: D



[Watch Video Solution](#)

10. Hysterectomy is surgical removal of

A. Mammary glands

B. Uterus

C. Prostate gland

D. Vas deference

Answer: B



[Watch Video Solution](#)

11. Assisted reproductive technology, IVF involves transfer of

- A. Ovum into the fallopian tube
- B. Zygote into the fallopian tube
- C. Zygote into the uterus
- D. Embryo with 16 blastomeres into the fallopian tube

Answer: B



[Watch Video Solution](#)

12. Which of the following is a hormone releasing intra uterine device (IUD)?

- A. Multiload 375
- B. LNG - 20
- C. Cervical cap

D. Vault

Answer: B



Watch Video Solution

13. Tubectomy is a method of sterilization in which

A. small part of the fallopian tube is removed or tied up

B. ovaries are removed surgically

C. small part of vas deferens is removed or tied up

D. uterus is removed surgically

Answer: A



Watch Video Solution

14. A childless couple can be assisted to have a child through a technique called GIFT. The full form of this technique is:-

- A. germ cell internal fallopian transfer
- B. gamete inseminated fallopian transfer
- C. gamete intra fallopian transfer
- D. gamete internal fertilization and transfer

Answer: C



[Watch Video Solution](#)

15. In context of amniocentesis, which of the following statements is incorrect?

- A. It is usually done when a woman is between 14-16 weeks pregnant.
- B. It is used for prenatal sex determination
- C. It can be used for detection of Down syndrome

D. It can be used for detection of Cleft palate

Answer: D



[Watch Video Solution](#)

16. Which of the following approaches does not give the defined action of contraceptive

A. Barrier methods prevent fertilization

B. Intrauterine - Increase phagocytosis devices of sperms, suppress sperm motility and fertilizing capacity of sperms

C. Hormonal Prevent/retard entry of contraceptives sperms, prevent ovulation and fertilization

D. Vasectomy - Prevents spermatogenesis

Answer: D



[Watch Video Solution](#)

17. Which of the following is hormone releasing IUD?

- A. Lippes loop
- B. Cu7
- C. LNG-20
- D. Multiload 375

Answer: C



[Watch Video Solution](#)

18. Which of the following is incorrect regarding vasectomy?

- A. Vase deferentia is cut and tied
- B. Irreversible sterility
- C. No sperm occurs in seminal fluid
- D. No sperm occurs in epididymis

Answer: D



Watch Video Solution

19. Embryo with more than 16 blastomeres formed due to in vitro fertilization is transferred into

- A. Fimbriae
- B. Cervix
- C. Uterus
- D. Fallopian tube

Answer: C



Watch Video Solution