



BIOLOGY

BOOKS - MBD BIOLOGY (ODIA ENGLISH)

HUMAN REPRODUCTION

Question Bank

1. Sertoli cells are found in _____ of mammals .

A. Kidney

B. Ovary

C. Testis

D. Liver

Answer: C



Watch Video Solution

2. ____ is responsible for the inhibition of ovulation

A. Oestrogen

B. Prolactin

C. Progesterone

D. Oxytocin

Answer: C



Watch Video Solution

3. Mature ovum enters fallopian tube through

A. infundibulum

B. Ostium

C. Vagina

D. Ureter

Answer: B



Watch Video Solution

4. Interstitial cells of testis produce hormone for the development of secondary sexual character in males

A. Testosterone

B. Progesterone

C. Thyroxine

D. FSH

Answer: A



Watch Video Solution

5. Which is structural and functional unit of testis

A. Fallopian tube

B. Nephric tubule

C. Urethra

D. Seminiferous tubule

Answer: D



Watch Video Solution

6. Dysmenorrhea, a painful menstruation is caused by

A. Uterine contractions

B. Ovarian cysts

C. Pelvic inflammation

D. All of the above

Answer: D



Watch Video Solution

7. The sperm produce some enzymes known as "sperm lysin" which helps in-

- A. Spermatogenesis
- B. Viability of sperm
- C. Penetration of sperm
- D. Movement of sperm

Answer: C



Watch Video Solution

8. Gametes are in chromosomal make up

- A. Diploid

B. Haploid

C. Tetraploid

D. Polyploid

Answer: B



Watch Video Solution

9. Zygotes contain number of chromosomes

A. n

B. $2n$

C. $3n$

D. $4n$

Answer: B



Watch Video Solution

10. The sertoli cells are regulated by which hormones of pituitary ?

A. GH

B. Prolactin

C. FSH

D. LH

Answer: C



Watch Video Solution

11. is the intromittent organ of man

A. Lips

B. Tongue

C. Testis

D. Penis

Answer: D



Watch Video Solution

12. Swelling of in old persons obstructs
urination

A. Seminal vesicle

B. Prostate glant

C. Bulbo-urethral gland

D. Corpus spongiosum

Answer: B



Watch Video Solution

13. Semen is composed of

A. Sperm and secretion from seminal vesicle

B. Sperm, secretion of seminal vesicle, prostate gland and Cowper's gland

C. Sperm and secretion from Cowper's gland

D. None of these

Answer: B



Watch Video Solution

14. In human being puberty occurs at the age of

A. 10-12 years

B. 12-13 years

C. 15-20 years

D. 20-22 years

Answer: B



Watch Video Solution

15. Menstruation cycle is controlled by

A. Oestrogen

B. Progesterone

C. Both (A) and (B)

D. None of these

Answer: C



Watch Video Solution

16. The endometrium is the lining of

A. Vas deferens

B. Oviduct

C. Uterus

D. None

Answer: C



Watch Video Solution

17. In whom is testis found inside the abdomen.

A. Elephant

B. Mouse

C. Horse

D. Dog

Answer: A



Watch Video Solution

18. Testes are masses of units of

A. Uriniferous tubule

B. Malpighian tubule

C. Vas deferens

D. Seminiferous tubule

Answer: D



Watch Video Solution

19. In human female the structure corresponding to penis is.

A. Urethra

B. Clitoris

C. Glans

D. Vulva

Answer: B



Watch Video Solution

20. What are the nurse cells for spermatozoa.

- A. Leydig cells
- B. Germinal cells
- C. Sertoli cells
- D. Spermatids

Answer: C



[Watch Video Solution](#)

21. Androgens are secreted by.

A. Testes

B. Ovary

C. Thyroid

D. Adrenal

Answer: A



[Watch Video Solution](#)

22. Inhibin hormone is secreted by.

A. Interstitial cell

B. Sertoli cells

C. Spermatocyte

D. Oocyte

Answer: B



Watch Video Solution

23. Identify the odd one of the following:

A. Infundibulum

B. Fimbriae

C. Labia minora

D. Isthmus

Answer: C



Watch Video Solution

24. Cowper's gland is a part of.

A. Liver

B. Pancreas

C. Male reproductive system of man

D. Femal reproductive system of human

Answer: C



Watch Video Solution

25. Fallopian tube is also called .

A. Oviduct

B. Ejaculatory duct

C. Ductus deferens

D. Vagina

Answer: A



Watch Video Solution

26. Acrosome is related to .

A. Ovum

B. Sperm

C. Oocyte

D. Spermatocyte

Answer: B



Watch Video Solution

27. Fertilization in human takes place in:

A. Fallopian tube

B. Uterus

C. Vagina

D. Ovary

Answer: A



Watch Video Solution

28. Which of the following is normally diploid (2n)?

A. Spermatids

B. Spermatogonoum

C. Secondary spermatocyte

D. Polar body

Answer: B



Watch Video Solution

29. Which is the outermost extra-embryonic membrane ?

A. Amnion

B. Allantois

C. Chorion

D. Yolk sac

Answer: C



Watch Video Solution

30. Menstrual cycle stops during or after:

- A. Gestation period
- B. Lactational period
- C. 45-50 year of age
- D. All of above

Answer: D



Watch Video Solution

31. Synthesis of yolk is known by:

A. Gluconeogenesis

B. Glycolysis

C. Vitellogenesis

D. None of the above

Answer: C



Watch Video Solution

32. Artificial labour can be induced by :

A. Oxytocin

B. Prolactin

C. Thyroxine

D. Corticosterone

Answer: A



Watch Video Solution

33. Which of the following stores and nourishes the sperms ?

A. Ovary

B. Epidymis

C. Oviduct

D. Ureter

Answer: B



Watch Video Solution

34. The process by which spermatids are converted into sperm is called .

- A. Spermioteliosis
- B. Spermiogenesis
- C. Spermatogenesis
- D. Both (a) and (b)

Answer: D



Watch Video Solution

35. In a mature sperm the mitochondria are present in .

A. Head of sperm

B. middle piece of sperm

C. Neck of sperm

D. Tail of sperm

Answer: C



Watch Video Solution

36. Clitoris is an outgrowth of which is :

- A. Non-functional penis
- B. Analogous to penis
- C. Homologous to penis
- D. Functional penis in females

Answer: C



Watch Video Solution

37. Archenteron is surrounded by :

A. Ectoderm

B. Endoderm

C. Mesoderm

D. Blastomeres

Answer: B



Watch Video Solution

38. Extrusion of second polar body from egg

occurs :

- A. After enter of sperm before completion of fertilization
- B. After completion of fertilization
- C. Before enter of sperm
- D. Without any relation of sperm entry

Answer: A



Watch Video Solution

39. Which one is correct sequence in the process of development .

A. Cleavage - zygote - fertilization -morula-

blastula - gastrula

B. Fertilization- zygote- cleavage- morula-

blastula- gastrula

C. Fertilization- cleavage- morula- zygote-

blastula- gastrula

D. Fertilization - zygote- gastrula- morula-
cleavage- gastrula

Answer: B



Watch Video Solution

40. Placenta of human being is formed by :

A. Amnion

B. Chorion

C. Allantoin

D. Allantoin, chorion, and uterine wall.

Answer: B



Watch Video Solution

41. Which type of cleavage occurs in the zygote of human female ?

A. Holoblastic and unequal

B. Meroblastic

C. Holoblastic and equal

D. Discoidal

Answer: A



Watch Video Solution

42. In which stages of development three germ layers are formed ?

A. Gastrula

B. Blastula

C. Morula

D. None of these

Answer: A



Watch Video Solution

43. Estrogen is secreted by :

A. Interstitial cell

B. Granulosa cells of Graafian follicle

C. Germinal epithelium of ovary

D. Pituitary

Answer: B



Watch Video Solution

44. Testes descend into scrotum in mammals for :

- A. Spermatogenesis
- B. Fertilization
- C. Development of sex organ
- D. None of these

Answer: A



Watch Video Solution

45. Antrum is a cavity of :

A. Ovary

B. Graafian follicle

C. Blastula

D. Gastrula

Answer: B



Watch Video Solution

46. How many sperm are produced from a single primary spermatocyte ?

A. 2

B. 3

C. 4

D. 5

Answer: C



47. Mammary gland is a modified :

- A. Sebacious gland
- B. Sweat gland
- C. Cutaneous gland
- D. Scent gland

Answer: B



48. Acrosome of spermatozoa is formed from :

A. Lysosome

B. Mitochondria

C. Ribosomes

D. Golgibodies

Answer: D



Watch Video Solution

49. Sequence of hormone during menstrual cycle is .

A. Oestrogen, Progesterone and FSH

B. Progesterone, Oestrogen and FSH

C. FSH, Oestrogen and progesterone

D. FSH, Progesterone and Oestrogen

Answer: C



Watch Video Solution

50. How many autosomes are present in a mature human sperm ?

A. 20

B. 22

C. 44

D. 46

Answer: B



Watch Video Solution

51. A cavity in gastrula is .

A. Archenteron

B. Blastocoel

C. Haemocoel

D. Hydrocoel

Answer: A



Watch Video Solution

52. Proliferation of endometrium of uterus is controlled by :

A. Relaxin

B. Oxytocin

C. Progesterone

D. Oestrogen

Answer: D



Watch Video Solution

53. Which one of the following is immortal ?

- A. Somatic cell
- B. Germ cells
- C. Glomerular cell
- D. Pitocytes

Answer: B



Watch Video Solution

54. Which hormone in urine confirms pregnancy ?

A. Progesterone

B. Estrogen

C. Human chorionic gonadotropin

D. Prolactin

Answer: C



Watch Video Solution

55. The Leydig cells secrete :

- A. Glucagon
- B. Androgens
- C. Oestrogen
- D. Lactogen

Answer: B



Watch Video Solution

56. In human fertilization occurs in :

A. Uterus

B. Vagina

C. Fallopian tube

D. Ovary

Answer: C



Watch Video Solution

57. During spermatogenesis, the first meiotic division is observed in :

A. Spermatozoans

B. Spermatids

C. Ootids

D. Primary spermatocytes

Answer: D



Watch Video Solution

58. The cells of Rauber are :

- A. Secretory cells is of endometrium in uterus
- B. Inner cell mass of blastocoel
- C. Cells of trophoblast in contact with inner cell mass of blastocyt
- D. Sertoli cells

Answer: C



Watch Video Solution

59. Sperm of animal species A cannot fertilize ovum of species B because .

A. Antifertilizin of A and B are not compatible.

B. Antifertilizin of A and fertilizin of B are not compatible.

C. Fertilizin of A and B are not compatible

D. None of above

Answer: B



[Watch Video Solution](#)

60. Humans are (oviparous, viviparous, ovoviviparous)

A. Oviparous

B. Viviparous

C. Ovo-viviparous

D. None of these

Answer: B



[Watch Video Solution](#)

61. Which set is similar :

A. Corpus luteum - graafian follicles

B. Sebum -Sweat

C. Bundle of His - pace maker

D. Vit. B7 - Niacin

Answer: A



Watch Video Solution

62. Temperature of the scrotum which is necessary for functioning of testis is always below body temperature. This difference is :

A. $2^{\circ}C$

B. $3^{\circ}C$

C. $4^{\circ}C$

D. $6^{\circ}C$

Answer: A



Watch Video Solution

63. Bartholin glands are situated :

A. on either side of vagina- in human

B. on either side of vas deferens in human

C. on the sides of heads of some
amphibians

D. at the reduced tail ends of birds.

Answer: A



Watch Video Solution

64. Menstrual cycle is affected by :

A. Progesterone only

B. LH only

C. LH +FSH+oestrogen

D. Oestrogen only

Answer: C



Watch Video Solution

65. Preparation of sperm before entry into the ovum is called :

A. Insemination

B. Maturation

C. Capacitation

D. Fertilization

Answer: C



Watch Video Solution

66. Oocyte is liberated from ovary under the influence of LH, after completing :

A. Meiosis and before liberating polar bodies

B. Meiosis -I and before liberating polar bodies

C. Meiosis

D. Meiosis -I after release of polar body

Answer: D



Watch Video Solution

67. Which is correct about human embryonic development ?

A. Cleavage divisions bring about considerable increase in mass of protoplasm.

B. In the second division, one of the two blastomeres usually divides a little sooner than the second.

C. With more cleavage division one of the two resultant blastomeres become larger and larger.

D. Cleavage division results in hollow ball of cells called morula

Answer: B



Watch Video Solution

68. The number of chromosomes in a mature gamete gets halved during :

A. Formation of first polar body

B. Formation of second polar body

C. Meiosis -II

D. Division of secondary oocyte and spermatocyte

Answer: A



Watch Video Solution

69. Frog' s testes do not possess:

- A. Interstitial cells
- B. Seminiferous cells
- C. Sertoli cells
- D. Seminal vesicles

Answer: C



Watch Video Solution

70. In oogamy, fertilization involves:

- A. A large non-motile female and a small non-motile male gamete
- B. A large motile female gamete and a small non-motile male gamete
- C. A small non-motile female gamete and a large motile male gamete
- D. A large non-motile female gamete and a small motile male gamete

Answer: D



Watch Video Solution

71. In human female, ovulation occurs during menstrual cycle:

- A. at the end of proliferative phase
- B. in the middle of secretory phase
- C. just before the end of secretory phase
- D. in the beginning of proliferative phase

Answer: A



Watch Video Solution

72. Nebenkern is a part of:

- A. Human ovum
- B. Human sperm
- C. Foetus
- D. Graafian follicle

Answer: B



Watch Video Solution

73. Yellow coloured milk secreted by cattle soon after the birth of a calf is called

A. Cholesterol

B. Colostrum

C. Chyme

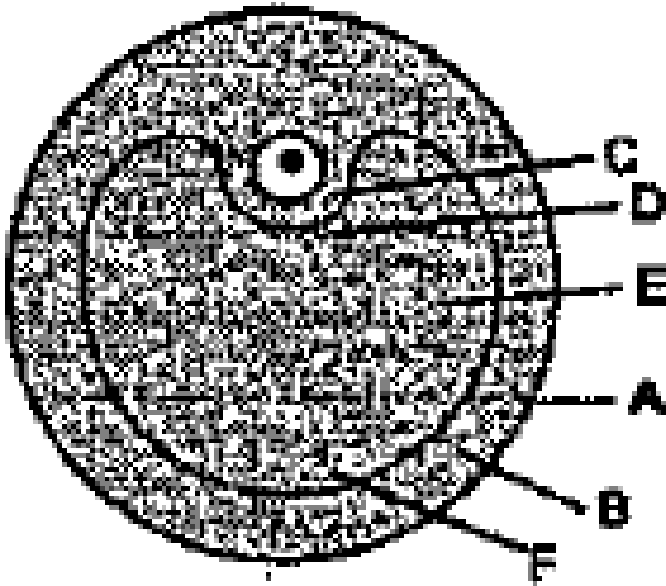
D. Chyle

Answer: B



74. In the diagram of section of Graffian follicle, different parts are indicated by alphabets . Choose the answer in which these alphabets have been correctly matched with

the parts they indicate.



A. A=Membrane granulosa : B=Theca interna, C = Ovum, D = Cumulus oophorus : E = Antrum, F = Theca externa

B. A = Theca externa, B = Theca interna, C =
Ovum, D = Membrana granulosa, E =
Antrum, F = Cumulus oophorus.

C. A = Theca externa, B = Theca interna, C =
ovum, D = Cumulus oophorus, E =
Antrum, F = membrana granulosa

D. A = Membrana granulosa, B = Theca
externa, C = Ovum, D = Cumulus
oophorus, E = Antrum, F = Theca interna

Answer: C



Watch Video Solution

75. In human female, ovulation occurs during menstrual cycle:

- A. At the beginning of the proliferative phase
- B. At the end of proliferative phase
- C. At the mid of secretory phase
- D. Just before the end of secretory phase

Answer: B



Watch Video Solution

76. In which of the following organisms testes descend into scrotum in breeding season but in non-breeding season goes up ?

A. Frog

B. Kangaroo

C. Shrew

D. Bat

Answer: D



Watch Video Solution

77. Proliferation of endometrium of uterus is controlled by :

- A. Relaxin
- B. Oxytocin
- C. Progesterone
- D. Oestrogen

Answer: D



Watch Video Solution

78. The type of placenta in shark is :

A. allantoic

B. yolk sac

C. haemochoria

D.

Answer: B



Watch Video Solution

79. Which cell organelle is absent in human sperm ?

A. ER

B. Mitochondria

C. Nucleus

D. Centrioles

Answer: A



80. The origin of kidney and ureter in *Rana tigrina* is :

- A. all mesodermal
- B. all endodermal
- C. ectodermal and mesodermal
- D. mesodermal

Answer: A



81. Which one of the following is immortal ?

A. Somatic cells

B. glomerular cells

C. germ cells

D. cells of pituitary

Answer: C



Watch Video Solution

82. Grey crescent is an area:

A. At the point of enter of sperm into ovum

B. At the animal pole

C. Just opposite to site of sperm entry into
ovum

D. At the vegetal pole

Answer: C



Watch Video Solution

83. Wolffian duct forms :

A. Epididymis

B. Oviduct

C. Penis

D. Urethra

Answer: A



Watch Video Solution

84. A cross section at the mid point of middle piece of a human sperm will show:

A. Centriole, mitochondria and 9+2

arrangement of microtubules

B.

C. Mitochondria and 9+2 arrangement of

microtubules

D. 9+2 arrangement of microtubules only

Answer: C



85. Which one of the following events is correctly matched with the time period in a normal menstrual cycle ?

A. Release of egg : 5 days

B. Endometrium regenerate : 5-10 days

C. Endometrium secretes nutrients for
implantation : 11- 18 days

D. Rise in progesterone : 1 - 15 days.

Answer: C



Watch Video Solution

86. If mammalian ovum fails to get fertilized ,
which one of the following is unlikely ?

- A. Corpus luteum will disintegrate
- B. Estrogen secretion further decreases
- C. Primary follicle start developing
- D. Progesterone secretion rapidly declines

Answer: C



Watch Video Solution

87. In which of the following sets of animals do all the four give birth to young ones ?

- A. Lion, bat , whale, ostrich
- B. Platypus, penguin, bat, hippopotamus
- C. Shrew, bat, cat, kiwi
- D. Kangaroo, hedgehog, dolphin, loris

Answer: D



Watch Video Solution

88. Both corpus luteum and macula lutea are :

A. found in human ovaries

B. a source of hormones

C. characterised by a yellow colour

D. contributory in maintaining pregnancy

Answer: C



Watch Video Solution

89. The sertoli cells are regulated by which hormones of pituitary ?

A. FSH

B. GH

C. Prolactin

D. LH

Answer: A



90. Withdrawal of which of the following hormones is the immediate cause of menstruation

- A. Estrogen
- B. FSH
- C. GnRH
- D. Progesterone

Answer: D



91. In cloning of cattle a fertilized egg is taken out of the mother's womb and:

A. in the eight cell stage , cells are separated and cultured until small embryos are formed which are implanted into the womb of the cows

B. in the eight cell stage the individual cells are separated under electrical field for

further development in culture media

C. from this upto eight identical twins can
be produced

D. the egg is divided into 4 pairs of cells
which implanted into the womb of other
COWS

Answer: A



Watch Video Solution

92. In the human female, menstruation can be deferred by the administration of:

A. Combination of FSH and LH

B. Combination of estrogen and progesterone

C. FSH only

D. LH only

Answer: B



Watch Video Solution

93. In humans, at the end of the first meiotic division, the male germ cells differentiates into

A. spermatids

B. spermatogonia

C. primary spermatocytes

D. secondary spermatocytes

Answer: D



Watch Video Solution

94. Which of the following statements is incorrect about menstruation ?

A. The menstrual fluid can easily clot

B. During normal menstruation about 40 mL blood is lost

C. The beginning of the cycle of menstruation is called menarche .

D. At menopause in the female, there is especially abrupt increase in

gonadotropic hormones

Answer: A



Watch Video Solution

95. Which one of the following statements about human Sperm is correct ?

A. The sperm lysins in the acrosome dissolve the egg envelope facilitating fertilisation

- B. Acrosome serves as a sensory structure leading the sperm towards the ovum
- C. Acrosome serves no particular function
- D. Acrosome has a conical pointed structure used for piercing and penetrating the egg, resulting in fertilisation

Answer: D



Watch Video Solution

96. The signals for parturition originate from

A. placenta as well as fully developed

foetus

B. oxytocin released from maternal

pituitary

C. fully developed foetus only

D. placenta only

Answer: A



Watch Video Solution

97. Sertoli cells are found in_____ of mammals .

A. adrenal cortex and secrete adrenaline

B. seminiferous tubules and provide
nutrition-to germ cells

C. pancreas and secrete cholecystokinin

D. ovaries and secrete progesterone

Answer: B



Watch Video Solution

98. Which of the following is characteristic of the 27th day of the menstrual cycle ?

A. Stasis of blood in the basal, straight arteries-of the endometrium

B. Constriction of the coiled spiral arteries

C. Increased proliferation of the endometrium,

D. edema Of the functional spongy

Increased layer of the endometrium

Answer: B



Watch Video Solution

99. In the male reproductive system:

A. Spermatozoa pass in order through efferent ductules, rete testis and ductus epididymis

B. The ductus deferens, seminal vesicle and prostate — all have smooth muscle in

their walls

C. The seminal vesicle is the main source of acid phosphatase in the semen

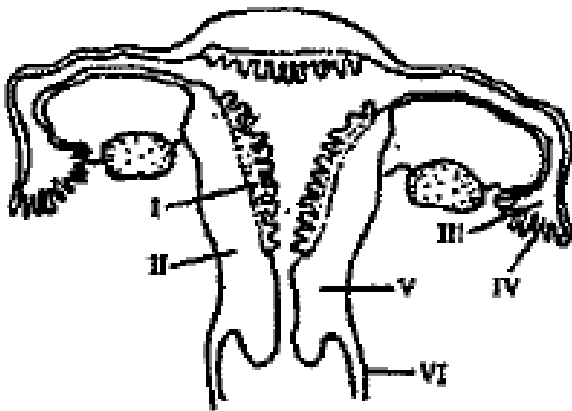
D. The prostate gland is a site- where maturation of sperms occurs

Answer: B



Watch Video Solution

100. The figure given below depicts a diagrammatic sectional view of the female reproductive system of humans. Which one set of three parts out of I-VI have been correctly identified ?



- A. (II) Endometrium, (III) infundibulum,
(IV) Fimbriae

B. (IV) Oviducal funnel, (V) Uterus, (VI)

Cervix

C. (III) Infundibulum,. (IV) Fimbriae,(V)

Cervix,

D. (I) Perimetrium, (II) Myometrium,

(III)Fallopian tube

Answer: C



Watch Video Solution

101. The testes in humans are situated outside the abdominal cavity inside a pouch called Scrotum. The purpose served is for :

- A. Maintaining the scrotal temperature lower than the internal body temperature
- B. Escaping any possible compression by the visceral organs
- C. Providing more space for the growth of epididymis

D. Providing a secondary sexual feature for exhibiting the male sex

Answer: A



Watch Video Solution

102. If for some reason, the vasa efferentia in the human reproductive system get block, the gametes will not be transported from :

A. Ovary to uterus

B. Epididymis to vas deferens

C. Testes to epididymis

D. Vagina to uterus

Answer: C



Watch Video Solution

103. The luteal (secretory) phase of the menstrual cycle is characterized by all of the following except :

- A. A coiling or sacculation of endometrial glands
- B. Decreased amounts of progesterone in the blood plasma
- C. The presence of a functional corpus luteum
- D. Atresia of some ovarian follicles

Answer: C



Watch Video Solution

104. The first movement of the foetus and appearance of hair on its head are usually observed during which month of pregnancy ?

- A. Fifth month
- B. Sixth month
- C. Third month
- D. Fourth month

Answer: A



Watch Video Solution

105. The second maturation division of the mammalian ovum occurs:

- A. Until after the ovum has been penetrated by a sperm
- B. Until the nucleus of the sperm has fused with that of the ovum
- C. In the Graafian follicle following the first maturation division

D. Shortly after ovulation before the ovum makes entry into the fallopian tube

Answer: A



Watch Video Solution

106. Which one of the following statements about morula in human is correct ?

A. It has far less cytoplasm as well as less DNA than in uncleaved zygote .

B. It has more or less equal quantity of cytoplasm and DNA as in nucleated zygote

C. It has more cytoplasm and more DNA than an uncleaved zygote .

D. It has almost equal quantity of cytoplasm as an uncleaved zygote but much more DNA.

Answer: A



Watch Video Solution

107. During the differentiation of a spermatozoan (spermatozoan) , the acrosome arises by accumulation of material in :

- A. Mitochondria
- B. The nucleus
- C. The Golgi complex
- D. The nuclear envelope

Answer:



Watch Video Solution

108. Seminal plasma is rich in

A. glucose and testosterone

B. DNA and potassium

C. ribose and potassium

D. fructose and calcium

Answer: D



Watch Video Solution

109. Fertilization in human is practically feasible only if :

A. The ovum and sperms are transported to the junction of cervix.

B. The ovum and sperms are transported to ampullary isthmic junction of the fallopian tube.

C. Sperms are transported to ovary.

D. None of the above

Answer: B



Watch Video Solution

110. In a normal pregnant woman of total gonadotropin activity was assessed. The result expected was :

A. High level of circulating HCG to stimulate

B. High levels of FSH and LH in uterus to stimulate endometrial thickening

C. High level of circulating HCG to stimulate estrogen and progesterone synthesis

D. High level of circulating FSH and LH in the uterus to stimulate implantation of the embryo

Answer: A



Watch Video Solution

111. The signals for parturition originate from

A. Oxytocin released from material

pituitary

B. Placenta only

C. Fully developed foetus only

D. Both placenta as well as fully developed

foetus

Answer: D



Watch Video Solution

112. The leydig's cells as found in the human body are the secretory sources of :

A. Intestinal mucus

B. Glucagon

C. Androgens

D. Progesterone

Answer: C



Watch Video Solution

113. Which one of the following is not the function of placenta ?

A. Secretes estrogen

B. Facilitates removal of carbon dioxide and waste material from embryo

C. Secretes oxytocin during parturition

D. Facilitates supply of oxygen and nutrients to embryo

Answer: C



114. What is the correct sequence of sperm formation ?

A. Spermatogonia , spermatocyte ,
spermatozoa' spermatid

B. Spermatogonia, spermatozoa ,
spermatocyte, spermatid

C. Spermatogonia, spermatocyte,
spermatid , spermatozoa

D. Spermatid,

spermatocyte,

spermatogonia, spermatozoa

Answer: C



Watch Video Solution

115. The shared terminal duct of the reproductive and urinary system in the human male is :

A. Urethra

B. Ureter

C. Vas deferens

D. Vasa efferentia

Answer: A



Watch Video Solution

116. The main function of mammalian corpus luteum is to produce :

A. Estrogen only

B. Progesterone

C. Human chorionic gonadotropin

D. Relaxin

Answer: B



Watch Video Solution

117. Select the correct option describing gonadotropin activity in a normal pregnant female.

A. High level of FSH and LH stimulates the thickening of endometrium.

B. High level of FSH and LH facilitate implantation of the embryo.

C. High level of HCG stimulates the synthesis of estrogen and progesterone.

D. High level of hCG stimulates the thickening of endometrium.

Answer: C



Watch Video Solution

118. Which part of human female reproductive system acts as womb ?



Watch Video Solution

119. Which cells of testis secrete androgens ?



Watch Video Solution

120. Which hormone of anterior pituitary is responsible for growth, maintenance and function of gonads ?



Watch Video Solution

121. Animals having both male and female reproductive organ are called what ?



Watch Video Solution

122. what structure connects foetus with the uterine wall ?



Watch Video Solution

123. Through which process a zygote develops into an embryo ?



Watch Video Solution

124. The foreskin around the glans penis is called what



Watch Video Solution

125. What term is applied to the sexual cycle in non-primate mammals ?



Watch Video Solution

126. Name the erectile tissue forming the glans penis .



Watch Video Solution

127. What term is used for the arrest of reproductive activity of human female at old days ?



Watch Video Solution

128. What term is applied for the various external genital organs in a woman ?



Watch Video Solution

129. Which structure of the ovary produces relaxin hormone ?



Watch Video Solution

130. What term expresses the onset of sexual maturity in boys and girls ?



Watch Video Solution

131. What is the process by which a living organism produces young once of its own kind ?



Watch Video Solution

132. What term is used for child birth ?



Watch Video Solution

133. Which organ of human female secretes human chorionic gonadotropin (hcG)?



Watch Video Solution

134. Which organ produces male gametes in human?



[Watch Video Solution](#)

135. Which organ produces female gametes in human?



[Watch Video Solution](#)

136. What are the organ producing gametes called ?



[Watch Video Solution](#)

137. What is the scientific term for male gamete ?



Watch Video Solution

138. What is the scientific term for female gamete ?



Watch Video Solution

139. What is produced when a sperm fertilizes an ovum ?



Watch Video Solution

140. What is the fertilization occurring outside the body of the organisms called ?



Watch Video Solution

141. What is the fertilization occurring inside the body of the organisms called ?



Watch Video Solution

142. What is the process of union of two gametes completely and permanently called ?



Watch Video Solution

143. In man , what is the condition called , in whom the testis fails to descend into scrotal sac ?



Watch Video Solution

144. In whom is testis found inside the abdomen.



Watch Video Solution

145. Which canal connects the cavity of the scrotal sac with the abdominal cavity ?



Watch Video Solution

146. Which structure connects testis of man to the wall of scrotal sac ?



Watch Video Solution

147. What is the abnormality , where the inguinal canal fails to contract or reopens called ?



Watch Video Solution

148. connective tissue covering the testis called ?



Watch Video Solution

149. In which tubules sperms are formed ?



Watch Video Solution

150. Which cells supply nourishment to developing sperms ?



Watch Video Solution

151. Which cells from the endocrine part of testis ?



[Watch Video Solution](#)

152. Which structure connects testis of man to the wall of scrotal sac ?



[Watch Video Solution](#)

153. Through which duct sperms pass from testis to urethra?



[Watch Video Solution](#)

154. What is constituted by sperm and secretions from seminal vesicle, prostate glands and Bulbourethral glands ?



Watch Video Solution

155. What is skiny covering on the glans penis called ?



Watch Video Solution

156. What is the enlarged sensitive tip of the penis termed as ?



Watch Video Solution

157. What is the period of intense sexual excitement termed as ?



Watch Video Solution

158. What is the sexual intercourse scientifically termed as ?



Watch Video Solution

159. Which term describe the connective tissue of ovary in mammals ?



Watch Video Solution

160. In which structures inside ovary the ovum develops ?



Watch Video Solution

161. Through which tube egg passes from ovary to uterus ?



Watch Video Solution

162. Presence of which structure in the female genital system of girls is a proof of virginity ?



Watch Video Solution

163. At what age menstruation starts in girls ?



Watch Video Solution

164. What term is used to express start of reproductive capacity in women?



[Watch Video Solution](#)

165. Which term describe the ceasure of reproductive capacity in women ?



[Watch Video Solution](#)

166. On which day of normal menstrual cycle, ovulation occurs?



[Watch Video Solution](#)

167. Where is the ovum fertilized in a woman ?



Watch Video Solution

168. Which term describes the attachment of fertilized ovum to the uterine wall ?



Watch Video Solution

169. Implantation of fertilized ovum and its development till birth is expressed by which

term ?



[Watch Video Solution](#)

170. Which hormone prepares the uterine wall for anticipated pregnancy as well as inhibits further maturation of graafian follicles if pregnancy occurs ?



[Watch Video Solution](#)

171. Which scientific term describes birth of young one ?



Watch Video Solution

172. What scar is left on ovary by the corpus luteum in case of failure of fertilization and pregnancy ?



Watch Video Solution

173. What term is applied to the sexual cycle in non-primate mammals ?



Watch Video Solution

174. Which term describes the period from conception till child birth ?



Watch Video Solution

175. What is the gestation period for human?



[Watch Video Solution](#)

176. In human female the structure corresponding to penis is.



[Watch Video Solution](#)

177. Cowpers gland of male correspond to which gland of female ?



[Watch Video Solution](#)

178. Who is called father of embryology ?



Watch Video Solution

179. Who discovered human spermatozoa and in which year ?



Watch Video Solution

180. Technique of testing amniotic fluid for sex determination is known as what ?





[Watch Video Solution](#)

181. Which part in male reproductive system store sperm ?



[Watch Video Solution](#)

182. Secretion of which gland makes the semen alkaline ?



[Watch Video Solution](#)

183. What the protective fluid for embryo of mammals is called ?



Watch Video Solution

184. What kind of placenta develops in human ?



Watch Video Solution

185. Where do you find the corpora cavernosa ?



[Watch Video Solution](#)

186. What is the peritoneal connection between ovary and uterus called ?



[Watch Video Solution](#)

187. Which part of the blastula gives rise to germ layers ?



[Watch Video Solution](#)

188. Fertilization in human takes place in:



Watch Video Solution

189. The process of release of egg from Graafian follicle is called _____.



Watch Video Solution

190. The milk produced during initial stage of lactation is called _____.





[Watch Video Solution](#)

191. Corpus luteum secretes hormone ____.



[Watch Video Solution](#)

192. The period between the fertilization and birth is called ____.



[Watch Video Solution](#)

193. The process which changes the Zygotes to blastula is called_____.



Watch Video Solution

194. _____ is the cavity of blastocyst.



Watch Video Solution

195. What is the sexual intercourse scientifically termed as ?



[Watch Video Solution](#)

196. _____ is the process by which the sperm prepares itself to fertilize the ovum.



[Watch Video Solution](#)

197. Cessation of menstrual cycle in female is called _____.



[Watch Video Solution](#)

198. Development of secondary sexual characters in male is controlled by which hormone ?



Watch Video Solution

199. What term is applied for the various external genital organs in a woman ?



Watch Video Solution

200. Scrotum is connected to abdominal cavity through a narrow canal is called _____.



Watch Video Solution

201. The process by which spermatids are converted into sperm is called .



Watch Video Solution

202. Cavity of scrotum is called _____.



[Watch Video Solution](#)

203. The first menstruation begins at puberty and is called _____.



[Watch Video Solution](#)

204. Animals with self- fertilizing ability is called _____.



[Watch Video Solution](#)

205. Degenerated corpus luteum is called ____.



[Watch Video Solution](#)

206. Mature Ovarian follicle is called ____.



[Watch Video Solution](#)

207. ____ is the process of release of sperms into lumen of seminiferous tubules.



[Watch Video Solution](#)

208. _____ is the act of expelling the infant from mother's uterus.



[Watch Video Solution](#)

209. The embryo at 16 - celled stage is known as _____.



[Watch Video Solution](#)

210. Ovulation takes place in _____.



[Watch Video Solution](#)

211. At menopause ,there is rise in urinary excretion of hormone _____



[Watch Video Solution](#)

212. Graafin follicles are found in _____ of mammals .



Watch Video Solution

213. Humans are oviparous.

A. True

B. False

C.

D.

Answer:



Watch Video Solution

214. The Ovum secretes enzyme hyaluronidase.

A. True

B. False

C.

D.

Answer:



Watch Video Solution

215. ZP2 glycoprotein is found in corona radiata.



Watch Video Solution

216. The mitochondrion in human are paternal origin.

A. True

B. False

C.

D.

Answer:



Watch Video Solution

217. The morula is a hollow sphere of embryo.



Watch Video Solution

218. Zygote is a single celled haploid cell.



Watch Video Solution

219. The new born child between 0 and 30 days is called infant.



Watch Video Solution

220. The baby between 0 month and 12 months is called toddlers.

A. True

B. False

C.

D.

Answer:



Watch Video Solution

221. The process of formation of ovum in Graafian follicle is called spermiogenesis.

A. True

B. False

C.

D.

Answer:



Watch Video Solution

222. Sterility of man results if sperms are mobile.

A. True

B. False

C.

D.

Answer:



Watch Video Solution

223. The lower part of uterus is vagina.



Watch Video Solution

224. The rapid mitotic division of zygote is called fertilization.



Watch Video Solution

225. Degeneration of ovarian follicles is called oogenesis.



Watch Video Solution

226. Intermixing of paternal and maternal chromosomes is called capacitation.



Watch Video Solution

227. The inner glandular lining of the uterus is stoma.



Watch Video Solution

228. The implantation is the process of release of semen into vagina of female.



Watch Video Solution

229. Development of unfertilized egg of an organism is called anisogamy.



Watch Video Solution

230. A period of sexual maturity is called menopause.



Watch Video Solution

231. The process of formation of yolk in the ovum is called parthenogenesis.



Watch Video Solution

232. Vagina is the house where the foetus gets food and shelter.



Watch Video Solution

233. Describe the structure of a seminiferous tubule.



Watch Video Solution

234. Write two major functions each of testes and ovaries.



Watch Video Solution

235. What are the major components of the seminal plasma?



Watch Video Solution

236. What are functions of sertoli cells ?



[Watch Video Solution](#)

237. What are the functions of male accessory duct- epididymis ?



[Watch Video Solution](#)

238. What are the functions of male accessory glands ?



[Watch Video Solution](#)

239. What are the major functions of the male reproductive system ?



Watch Video Solution

240. Explain the structure and function of Graafian follicle.



Watch Video Solution

241. What are Leydig cells? Write down their functions.



Watch Video Solution

242. What is parturition ? Give a brief account.



Watch Video Solution

243. What is lactation ? Write down its mechanism.



[Watch Video Solution](#)

244. What are the composition of colostrum ?



[Watch Video Solution](#)

245. What is after birth ?



[Watch Video Solution](#)

246. What is an umbilical cord ?



Watch Video Solution

247. How polyspermy is prevented ?



Watch Video Solution

248. What is the significance of colostrum ?



Watch Video Solution

249. Describe the role of prolactin and oxytocin in milk production.



Watch Video Solution

250. Differentiate between : Primary sex organ and secondary sex organ



Watch Video Solution

251. Differentiate between : Testis and Ovary



[Watch Video Solution](#)

252. Differentiate between : Vas deferens and Vas efferentia



[Watch Video Solution](#)

253. Differentiate between : Spermatogenesis and oogenesis



[Watch Video Solution](#)

254. Differentiate between : Estrous cycle and menstrual cycle



Watch Video Solution

255. Differentiate between : Spermatogenesis and Spermiogenesis



Watch Video Solution

256. Differentiate between : Proliferative phase and Secretory phase



Watch Video Solution

257. Differentiate between : Corpus luteum and corpus albicans.



Watch Video Solution

258. Arrange the following female reproductive parts in proper sequence from ovary to vulva.



Watch Video Solution

259. What is spermatogenesis ? Name the different development stage between 'Spermatogonia' and 'Spermatozoa'.



Watch Video Solution

260. Distinguish between fertilizin and antifertilizin.



Watch Video Solution

261. Draw a labelled diagram of human sperm (no description needed).



Watch Video Solution

262. Differentiate between sperm and ovum.





[Watch Video Solution](#)

263. Explain role (or importance) of fertilizin and antifertilizin.



[Watch Video Solution](#)

264. What is the significance of fertilization ?



[Watch Video Solution](#)

265. What are the roles of Human Chorionic Gonadotropin (HCG).



Watch Video Solution

266. What are the functions of placenta ?



Watch Video Solution

267. Write a short notes on Differentiation of Spermatid.



Watch Video Solution

268. What is placenta ?



Watch Video Solution

269. What are the functions of placenta ?



Watch Video Solution

270. Write the function of the following :

Corpus luteum



Watch Video Solution

271. Write the function of the following :

Endometrium



Watch Video Solution

272. State the function of the following

(i) Acrosome (ii) Sperm tail



Watch Video Solution

273. State the function of the following

(i) Acrosome (ii) Sperm tail



Watch Video Solution

274. Write the function of the following :

Fibriae



Watch Video Solution

275. How many spermatozoa are formed from one secondary spermatocyte ?



Watch Video Solution

276. Where does the first cleavage division of zygote takes place ?



Watch Video Solution

277. What is foetal ejection reflex ? Explain how it leads to parturition ?



Watch Video Solution

278. Give an account of the human male reproductive system.



Watch Video Solution

279. Describe the reproductive system in human female.



Watch Video Solution

280. Describe the process of Spermatogenesis.



[Watch Video Solution](#)

281. Describe the process of Oogenesis.



[Watch Video Solution](#)

282. Write short notes on : Menstrual cycle



[Watch Video Solution](#)

283. Write notes on Syngamy.



Watch Video Solution

284. Write short notes on : Development of human embryo up to 3 germ layers



Watch Video Solution

285. Write short notes on : Implantation



Watch Video Solution

286. Write short notes on : Parturition



Watch Video Solution

287. Draw a neat labelled diagram of T.S. of ovary of human female.



Watch Video Solution

288. Draw a labelled diagram of a Graafian follicle.



Watch Video Solution

289. Draw a labelled diagram of human sperm
(no description needed).



Watch Video Solution