



CHEMISTRY

BOOKS - MODERN PUBLICATION

CHEMISTRY IN EVERYDAY LIFE

Example

1. What is the role of bithional in toilet soaps ?



Watch Video Solution

2. Which class of drug is used in sleeping pills ?



Watch Video Solution

3. What class of drug is Ranitidine ?



Watch Video Solution

4. Which of the following is an antiseptic ? 0.2% phenol, 1% phenol



Watch Video Solution

5. Pick out the odd one out from amongst the following on the basis of their medicinal properties mentioning the reason: Luminal, seconal, phenacetin, equanil



[Watch Video Solution](#)

6. Pick out the odd one from among the following on the basis of their medicinal properties mentioning the reason : Chloroxylenol, phenol, chloramphenicol, bithional.



[Watch Video Solution](#)

7. Name a broad-spectrum antibiotic and state two diseases for which it is prescribed.



Watch Video Solution

8. Which chemical is responsible for the antiseptic properties of dettol ?



Watch Video Solution

9. Sulpha drugs work like antibiotics but these are not antibiotics. Is this a valid statement, if yes then why



[Watch Video Solution](#)

10. Name the class of antimicrobial drugs.



[Watch Video Solution](#)

11. Name the most common antacid.



[Watch Video Solution](#)

12. What are antibiotics ? Name the first antibiotic discovered.



Watch Video Solution

13. What type of drug is phenacetin ?



Watch Video Solution

14. Give an example of a sulpha drug.



Watch Video Solution

[Watch Video Solution](#)

15. A pain reliever used for relief from severe pain like post-operative pain or pain due to terminal cancer.



[Watch Video Solution](#)

16. Name a substance which can be used both as an antipyretic and as an analgesic.



[Watch Video Solution](#)

17. Name a substance which can be used as an antiseptic as well as disinfectant.



Watch Video Solution

18. What are the main constituents of dettol ?



Watch Video Solution

19. What is tincture of iodine and what is it used for ?



Watch Video Solution

20. Giving one example of each analgesics and tranquilizers.



[Watch Video Solution](#)

21. Sleeping pills are recommended to patient suffering from sleepness but it is not advisable to take them without consulting the doctor. Why?



[Watch Video Solution](#)

22. Give the name of first antibiotic discovered.



[Watch Video Solution](#)

23. Name the medicine which reduces fever.



[Watch Video Solution](#)

24. Give the name of one neurotransmitter.



[Watch Video Solution](#)

25. Which one of the following is a food preservative ? Equanil, Morphine, Sodium

benzoate.



[Watch Video Solution](#)

26. If water contains calcium hydrogen carbonate, out of soap and synthetic detergents which one will you use for cleansing clother ?



[Watch Video Solution](#)

27. Give one example of artificial sweetening agent.



[Watch Video Solution](#)

Watch Video Solution

28. What is the most common use of Aluminium bronze alloy?



Watch Video Solution

29. Give the structure of alkyl benzene sulphonate detergent.



Watch Video Solution

30. What is BHT ?



[Watch Video Solution](#)

31. What are biodegradable and non-biodegradable detergents ?



[Watch Video Solution](#)

32. Why the detergents with straight hydrocarbon groups are better than the detergents with branched chain hydrocarbon groups ?



[Watch Video Solution](#)

33. Name two artificial sweeteners used in food materials.



Watch Video Solution

34. Give one example each of cationic and anionic detergent.



Watch Video Solution

35. Express 877 in roman numbers.



Watch Video Solution

36. Express 878 in roman numbers.



Watch Video Solution

37. Give one example for each of the following :

An artificial sweetner whose use is limited to cold drinks.



Watch Video Solution

38. Give one example for each of the following :

A non-ionic detergent.



Watch Video Solution

39. Sleeping pills are recommended by doctors to the patients suffering from sleeplessness but it is not advisable to take its doses without consultation with the doctor. Why ?



Watch Video Solution

40. Ranitidine is antacid. With reference to which IT classification this statement has been given ?

 [Watch Video Solution](#)

41. Why do we require artificial sweetening agents ?

 [Watch Video Solution](#)

42. Write the chemical equations for preparing sodium soap from glyceryl oleate and glyceryl

palmitate.



Watch Video Solution

43. Aluminium bronze alloy is made up of-



Watch Video Solution

44. Express 1054 in roman numbers.



Watch Video Solution

45. Why do we need to classify the drugs in different ways ?

 [Watch Video Solution](#)

46. Explain the term “target molecules or drug targets” as used in medicinal chemistry.

 [Watch Video Solution](#)

47. Name the biomolecules that are chosen as drug targets ?



Watch Video Solution

48. Why should not medicines be taken without consulting doctors ?



Watch Video Solution

49. What do you mean by the term chemotherapy?



Watch Video Solution

50. Which forces are involved in holding the drugs to the active site of enzymes ?



Watch Video Solution

51. What is the most common use of solder?



Watch Video Solution

52. Low level of noradrenaline is the cause of depression. What type of drugs are needed to cure this problem ? Name two drugs.



Watch Video Solution

53. What are broad spectrum antibiotics.



Watch Video Solution

54. How do antiseptics differ from disinfectants?

Give one example of each



Watch Video Solution

55. Why are cimetidine and ranitidine better antacids than sodium hydrogen carbonate or magnesium or aluminium hydroxide ?



Watch Video Solution

56. Name a substance which can be used as an antiseptic as well as disinfectant.



Watch Video Solution

57. What are main constituents of dettol ?



Watch Video Solution

58. What is tincture of iodine and what is it used for ?



Watch Video Solution

59. What are food preservatives ?



Watch Video Solution

60. Why is use of aspartame limited to cold foods and drinks ?



Watch Video Solution

61. What are artificial sweeteners ?



Watch Video Solution

62. Name a sweetening agent used in the preparation of sweets for a diabetic patient.



Watch Video Solution

63. What problem arises in using alitame as artificial sweetener ?



Watch Video Solution

64. How are synthetic detergents better than soaps ?



Watch Video Solution

65. Explain the following terms with suitable examples.

Cationic detergents



Watch Video Solution

66. Explain the following terms with suitable examples.

Anionic detergents



Watch Video Solution

67. Explain the following terms with suitable examples.

Non-ionic detergents



Watch Video Solution

68. What are biodegradable and non-biodegradable detergents ?



Watch Video Solution

69. Why do soaps not work in hard water ?



[Watch Video Solution](#)

70. Which one of the soap and synthetic detergent can be used to check the hardness of water ?



[Watch Video Solution](#)

71. Explain the mechanism of the cleansing action of soaps



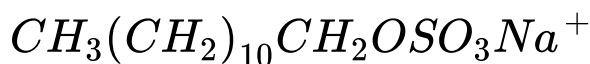
[Watch Video Solution](#)

72. If water contains calcium hydrogen carbonate, out of soap and synthetic detergents which one will you use for cleansing clother ?



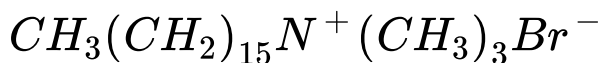
Watch Video Solution

73. Label the hydrophilic and hydrophobic parte in the following compound :



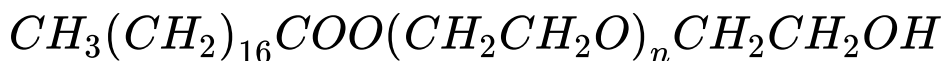
Watch Video Solution

74. Label the hydrophilic and hydrophobic parts in the following compound :



[Watch Video Solution](#)

75. Label the hydrophilic and hydrophobic part in the following compound :



[Watch Video Solution](#)

76. What is the average molecular mass of drugs ?

 [Watch Video Solution](#)

77. Write the uses of medicines.

 [Watch Video Solution](#)

78. What are antiseptics? Give one example.

 [Watch Video Solution](#)

79. Which type of drugs come under antimicrobial drugs?

- A. Antiseptics,antibiotics,disinfectant.
- B. Tranquilizers,analgesics,antiseptics.
- C. Tranquilizers,antiseptics,antifertility
- D. Antiseptics,antacids,antihistamine.

Answer:



Watch Video Solution

80. Where are receptors located in the body?



[Watch Video Solution](#)

81. What is the harmful effect of hyperacidity?



[Watch Video Solution](#)

82. Which site of an enzyme is called allosteric site?



[Watch Video Solution](#)

83. Which forces are involved in holding the drugs to the active site of enzymes ?



Watch Video Solution

84. What is the commonality between the antibiotic arsphenamine and azodye ?



Watch Video Solution

85. Which class of drug is used in sleeping pills ?



Watch Video Solution

86. Aspirin is pain relieving antipyretic drug but can be used to prevent heart attack. Explain.



Watch Video Solution

87. Both antacids and antiallergic drugs are antihistamines but they cannot replace each other. Explain why?



Watch Video Solution

88. What is a soft soap?



Watch Video Solution

89. If soap has high alkali content it irritates skin.

How can the amount of excess alkali be determined? What can be the source of excess alkali?



Watch Video Solution

90. Explain why some times foaming is seen in river water near the place where sewage water is poured after treatment?



Watch Video Solution

91. Which category of the synthetic detergents is used in toothpaste?



Watch Video Solution

92. Hair shampoos belong to which class of synthetic detergent?



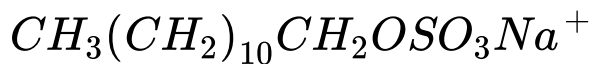
Watch Video Solution

93. Dishwashing soaps are synthetic detergents. What is their chemical nature?



Watch Video Solution

94. Label the hydrophilic and hydrophobic parts in the following compound :



[Watch Video Solution](#)

95. What is the most common use of alanko?



[Watch Video Solution](#)

96. What is the most common use of manganese steel?



[Watch Video Solution](#)

97. What are analgesics ?



Watch Video Solution

98. Express 879 in roman numbers.



Watch Video Solution

99. What is the basic difference between antiseptics and disinfectants?



Watch Video Solution

100. Fill in the blanks with appropriate answer-
_____, _____ and _____ combine together
in definite proportion to form an alloy called gun
metal.



Watch Video Solution

101. Express 880 in roman numbers.



Watch Video Solution

102. What is the medicinal use of narcotic drugs ?





[Watch Video Solution](#)

103. What is the most common use of chromium steel?



[Watch Video Solution](#)

104. Express 881 in roman numbers.



[Watch Video Solution](#)

105. What is the side product of soap industry?

Give reactions showing soap formation.



Watch Video Solution

106. Express 882 in roman numbers.



Watch Video Solution

107. Fill in the blanks with appropriate answer- A mixture of chromium, carbon and iron makes an alloy which is called _____



[Watch Video Solution](#)

108. Express 883 in roman numbers.



[Watch Video Solution](#)

109. Express 884 in roman numbers.



[Watch Video Solution](#)

110. Express 885 in roman numbers.



[Watch Video Solution](#)

Watch Video Solution

111. Express 886 in roman numbers.



Watch Video Solution

112. Express 887 in roman numbers.



Watch Video Solution

113. Fill in the blanks with appropriate answer-

Bronze is a mixture of _____ and _____.



Watch Video Solution

 [Watch Video Solution](#)

114. Pickles have a long shelf life and do not get spoiled for months, why?



[Watch Video Solution](#)

115. What is the difference between saccharin and saccharic acid?



[Watch Video Solution](#)

116. Name an artificial sweetener which is derivative of sucrose.



Watch Video Solution

117. Name two α -amino acids which form a dipeptide which is 100 times more sweet than cane sugar?



Watch Video Solution

118. Aspartame is unstable at cooking temperature, where would you suggest aspartame to be used for sweetening?



Watch Video Solution

119. Fill in the blanks- Mixture of _____ and _____ form an alloy called brass.



Watch Video Solution

120. Explain the role of allosteric site in enzyme inhibition?



Watch Video Solution

121. Where are receptors located in the body?



Watch Video Solution

122. What happens when the bond formed between an enzyme and an inhibitor is a strong covalent bond?



[Watch Video Solution](#)

123. Amino acids serine, aspartic acid and phenylalanine are present on the active site of an enzyme. Explain which forces may be involved in binding the drug to the enzyme if the drug inhibits the holding of substrate on the active site of enzyme .



[Watch Video Solution](#)

124. Express 888 in roman numbers.



[Watch Video Solution](#)

125. Express 889 in roman numbers.



[Watch Video Solution](#)

126. Account for the following : Aspirin drug helps in the prevention of heart attack.



[Watch Video Solution](#)

127. Diabetic patients are advised to take artificial sweeteners instead of natural sweeteners. Explain.



Watch Video Solution

128. Why are some substances biodegradable and some non-biodegradable?



Watch Video Solution

Exercise

1. True or False : Equanil, used as tranquilizer, is a derivative of barbituric acid.

 [Watch Video Solution](#)

2. True or False : Phenol acts both as antiseptic and disinfectant.

 [Watch Video Solution](#)

3. True or False : Chloroquine is used to cure typhoid.



[Watch Video Solution](#)

4. True or False : Synthetic detergents work well even in hard water.



[Watch Video Solution](#)

5. True or False

All monerans are autotrophs.



[Watch Video Solution](#)

6. Fill in the blanks with appropriate answer-

Mixture of _____, _____ and _____ makes an alloy called coin metal.



Watch Video Solution

7. A 1% solution of phenol in water is used as an antiseptic



Watch Video Solution

8. True or False : Butylated hydroxy anisole is used as artificial sweetening agent.



Watch Video Solution

9. True or False : Omeprazole and lansoprazole are most effective antacid drugs.



Watch Video Solution

10. True or False : Mifepristone is used as antifertility drug.



[Watch Video Solution](#)

11. Complete the missing links: Aspirin acts as and



[Watch Video Solution](#)

12. Bithional is added to soaps to impart them properties.



[Watch Video Solution](#)

13. Explain the given statement- In making of bronze alloy, a mixture of two metals are used.



Watch Video Solution

14. Dettol is a mixture of :



Watch Video Solution

15. Equanil is



Watch Video Solution

16. How was penicillin discovered?



Watch Video Solution

17. Name an artificial sweetener which is derivative of sucrose.



Watch Video Solution

18. Fill in the blanks- _____, _____ and _____ metals combine to form an alloy which is

used in making aircraft structures, truck wheels and screw machine products etc.



[Watch Video Solution](#)

19. The chemical substances which prevent the allergic reactions in body are called



[Watch Video Solution](#)

20. Chloramphenicol is an: Antifertility drug, Antihistaminic, antiseptic and disinfectant, antibiotic-broad spectrum.



[Watch Video Solution](#)

21. The birth control pills are called drugs.



[Watch Video Solution](#)

22. Amyl metacresol is



[Watch Video Solution](#)

23. Choose the correct alternative : Arsphenamine is used as antimicrobial/antifertility drug.



[Watch Video Solution](#)

24. A 1% solution of phenol in water is used as an antiseptic



[Watch Video Solution](#)

25. Valium is used as tranquilizer. True or False



[Watch Video Solution](#)

26. The chemical substances used to check pregnancy in women is called antifertility drugs.



[Watch Video Solution](#)

27. Ormeloxifene is antifertility / antibiotic drug.



[Watch Video Solution](#)

28. Read the given passage and answers following questions :

The cleansing action of soap is due to

emulsification and micelle formation. Soaps are basically sodium and potassium salts of long chain fatty acids, $R-COO-Na^+$. The end of the molecule to which the sodium is attached is polar in nature, while the alkyl-end is non-polar. Thus, a soap molecule contains a hydrophilic (polar) and a hydrophobic (nonpolar) part. When soap is added to water containing dirt, the soap molecules surround the dirt particles in such a manner that their hydrophobic parts get attached to the dirt molecule and the hydrophilic parts point away from the dirt molecule. This is known as micelle formation. Thus, we can say that the polar group dissolves in water while the non-

polar group dissolves in the dirt particle. Now, as these micelles are negatively charged, they do not coalesce and a stable emulsion is formed.

What is polar and non-polar groups ?



[Watch Video Solution](#)

29. What are biodegradable and non-biodegradable detergents ?



[Watch Video Solution](#)

30. BHA is antimicrobial /antioxidant in food.



[Watch Video Solution](#)

31. True or False : Synthetic detergents work well even in hard water.



[Watch Video Solution](#)

32. Aspartame is more/less stable than alitame during cooking.



[Watch Video Solution](#)

33. Name a substance which can be used both as an antipyretic and as an analgesic.



Watch Video Solution

34. Express 890 in Roman numbers.



Watch Video Solution

35. Compound which is added to soap to impart antiseptic properties is



Watch Video Solution

36. Define narrow spectrum antibiotics with suitable examples.



Watch Video Solution

37. Define antimalarial drugs.



Watch Video Solution

38. Which chemical is responsible for the antiseptic properties of dettol ?



[Watch Video Solution](#)

39. Give the structural formula of aspirin. Give the IUPAC name



[Watch Video Solution](#)

40. Name two antioxidants in food.



[Watch Video Solution](#)

41. What are antibiotics ? Name the first antibiotic discovered.



Watch Video Solution

42. What is the role of bithional in toilet soaps ?



Watch Video Solution

43. Name two artificial sweeteners used in food materials.



Watch Video Solution

44. Name a substance which can be used as an antiseptic as well as disinfectant.



Watch Video Solution

45. What are antimicrobials ? Give two examples.



Watch Video Solution

46. Express 891 in roman numbers.



Watch Video Solution

47. What is tincture of iodine and what is it used for ?



[Watch Video Solution](#)

48. Express 892 in roman numbers.



[Watch Video Solution](#)

49. Explain the given statement- Two metals_____ and _____ are combined in definite proportions to make an alloy called Magnesium.



Watch Video Solution

50. Express 893 in roman numbers.



Watch Video Solution

51. What are the main constituents of dettol ?



[Watch Video Solution](#)

52. What are antacids?



[Watch Video Solution](#)

53. Antipyretics are medicinal compounds which

A. lower body temperature

B. relieve pain

C. control malaria

D. kill microorganisms.

Answer:



Watch Video Solution

54. 0-2 per cent solution of phenol is :

- A. antibiotic
- B. antiseptic
- C. disinfectant
- D. analgesic

Answer:



Watch Video Solution

55. Which of the following is an analgesic ?

- A. Ranitidine
- B. Aspirin
- C. Penicillin
- D. None of these

Answer:



Watch Video Solution

56. Aspirin is an

- A. antipyretic
- B. antibiotics
- C. antiseptic
- D. None of these

Answer:



Watch Video Solution

57. Acetyl salicylic acid is used as

A. an antiseptic

B. an antibiotic

C. an analgesic

D. a pesticide

Answer:



Watch Video Solution

58. Which is used as a preservative to protect processed food?

A. Sodium sulphate

B. Saccharin

C. Sodium bicarbonate

D. Sodium metabisulphite

Answer:



Watch Video Solution

59. Express 894 in roman numbers.



Watch Video Solution

60. Fill in the blanks- _____, _____ and _____ are used in making an alloy called German silver.



[Watch Video Solution](#)

61. Express 858 in roman numbers.



[Watch Video Solution](#)

62. Express 896 in roman numbers.



[Watch Video Solution](#)

63. Fill in the blanks- _____ and _____ metals are used in making of electrical devices and parts of the machines.



Watch Video Solution

64. Express 897 in roman numbers.



Watch Video Solution

65. What are antibiotics? List the properties of antibiotics to be used as medicine.



Watch Video Solution

66. Express 898 in roman numbers.



Watch Video Solution

67. Fill in the blanks- A mixture of _____, _____ and _____ metals are used to make an alloy called monel metal.



[Watch Video Solution](#)

68. Express 900 in roman numbers.



[Watch Video Solution](#)

69. Express 901 in roman numbers.



[Watch Video Solution](#)

70. Express 902 in roman numbers.



[Watch Video Solution](#)

71. Fill in the blanks- A mixture of _____, _____ and _____ metals combine to form an alloy called duralumin.



Watch Video Solution

72. Fill in the blanks- A mixture of _____, _____ and _____ metals combine in definite percentage to form an alloy called hydroaluminum.



Watch Video Solution

73. Fill in the blanks with appropriate answers- A mixture of _____ and _____ metals combine to form an alloy called artificial gold.



[Watch Video Solution](#)

74. Fill in the blanks- A mixture of _____ and _____ metals combine in definite percentage composition to form an alloy which is used to make guns and equipments of machines.



[Watch Video Solution](#)

75. Fill in the blanks- German silver is made up of _____, _____ and _____ metals.



[Watch Video Solution](#)

76. Fill in the blanks- Bell metal is made up of _____ and _____ metals.



[Watch Video Solution](#)

77. Account for the following : Aspirin drug helps in the prevention of heart attack.



[Watch Video Solution](#)

78. Diabetic patients are advised to take artificial sweeteners instead of natural sweeteners. Explain.



[Watch Video Solution](#)

79. Why are detergents non-biodegradable while soaps are biodegradable?



[Watch Video Solution](#)

80. Explain the following terms with one suitable example : Cationic detergents.



Watch Video Solution

81. Explain the following terms with one suitable example : Enzymes.



Watch Video Solution

82. Explain the following terms with one suitable example : Antifertility drugs.



[Watch Video Solution](#)

83. Explain the following terms with one suitable example : A sweetening agent for diabetic patients.



[Watch Video Solution](#)

84. Explain the following terms with one suitable example : Enzymes.



[Watch Video Solution](#)

85. Explain the following terms with one suitable example : Analgesics.



Watch Video Solution

86. What are tranquilizers? Name two examples with their effects.



Watch Video Solution

87. What are food preservatives ?



Watch Video Solution

88. What are synthetic detergents ?



Watch Video Solution

89. Differentiate between soaps and synthetic detergent



Watch Video Solution

90. What do you mean by food preservatives ?

Give names of any two food preservatives.



[Watch Video Solution](#)

91. Sleeping pills are recommended to patient suffering from sleepness but it is not advisable to take them without consulting the doctor. Why?



[Watch Video Solution](#)

92. Why do we require artificial sweetening agents ?



[Watch Video Solution](#)

93. Which one of the following is a food preservative ? Equanil, Morphine, Sodium benzoate.



Watch Video Solution

94. Why is bithional added to soap ?



Watch Video Solution

95. Which class of drugs is used in birth control ?



Watch Video Solution

96. Write the structural formula of saccharin.



Watch Video Solution

97. Explain the mechanism of the cleansing action of soaps



Watch Video Solution

98. What are food preservatives ?



Watch Video Solution

99. Mention a drug which can act, both as an analgesic as well as an antipyretic. Name an artificial sweetening agent.



Watch Video Solution

100. What is the role of antioxidants in our living systems? Name one familiar antioxidant.



Watch Video Solution

101. Give the name of one neurotransmitter.



Watch Video Solution

102. Antibiotics are classified into broad spectrum antibiotics and narrow spectrum antibiotics.

Write one example each for these antibiotics.



Watch Video Solution

103. Write one similarity and one difference between nuclear fusion and fission.



Watch Video Solution

Watch Video Solution

104. What are disinfectants ? Give some examples.



Watch Video Solution

105. Name the biomolecules that are chosen as drug targets ?



Watch Video Solution

106. What are anionic detergents? Give an example.



[Watch Video Solution](#)

107. What are antiseptics? Give one example.



[Watch Video Solution](#)

108. Why is use of aspartame limited to cold foods and drinks ?



[Watch Video Solution](#)

109. Name a sweetening agent used in the preparation of sweets for a diabetic patient.



Watch Video Solution

110. What are antibiotics? Give two examples.
Name the first antibiotic discovered.



Watch Video Solution

111. Write the therapeutic action of the following drugs in our body: Analgesics.



[Watch Video Solution](#)

112. Write the therapeutic action of the following drugs in our body: Antibiotics.



[Watch Video Solution](#)

113. Write the therapeutic action of the following drugs in our body: Antihistamines .



[Watch Video Solution](#)

114. How do bactericidal antibiotics differ from bacteriostatic antibiotics? Give one example of each.



Watch Video Solution

115. What are antibiotics ? Name the first antibiotic discovered.



Watch Video Solution

116. Give one example of an artificial sweetener used by diabetic patients.



Watch Video Solution

117. What are antioxidants? Give one example.



Watch Video Solution

118. Name two major disadvantages of using synthetic detergents.



Watch Video Solution

119. What are broad spectrum antibiotics ? Give one example.



Watch Video Solution

120. Give one example of the following : A non-narcotic analgesic.



Watch Video Solution

121. Give one example of an artificial sweetener used by diabetic patients.



Watch Video Solution

122. Which one of the following is a food preservative ? Equanil, Morphine, Sodium benzoate.



Watch Video Solution

123. Which one of the soap and synthetic detergent can be used to check the hardness of water ?



Watch Video Solution

124. What is tincture of iodine and what is it used for ?



Watch Video Solution

125. Explain the mechanism of the cleansing action of soaps



Watch Video Solution

126. What are food preservatives ?



Watch Video Solution

127. Explain with example: Detergents.



Watch Video Solution

128. Name a substance which can be used as an antiseptic as well as disinfectant.



Watch Video Solution

129. What are detergents ? Give their scheme of classification. Why are detergents preferred over soaps?



Watch Video Solution

130. Give two examples of antibiotics.



[Watch Video Solution](#)

131. (i) Define azeotropic mixture.

(ii) How are antiseptic distinguished from disinfectants ? Give one example of each of the substances.



[Watch Video Solution](#)

132. What are additives ?



[Watch Video Solution](#)

133. What are anti histamines ?



Watch Video Solution

134. What are tranquilizers? Name two examples with their effects.



Watch Video Solution

135. What is tincture of iodine? Give the constituents of dettol.



Watch Video Solution

136. What are broad spectrum antibiotics.



Watch Video Solution

137. What is antacid ? Give one example.



Watch Video Solution

138. Distinguish between soaps and detergents



Watch Video Solution

139. Give the name of first antibiotic discovered.



Watch Video Solution

140. What are broad spectrum antibiotics.



Watch Video Solution

141. Define narrow spectrum antibiotics.



Watch Video Solution

142. What are antacids? Name two commonly used antacids.



Watch Video Solution

143. What is the basic difference between antiseptics and disinfectants?



Watch Video Solution

144. Name a substance which can act as non-narcotic analgesic.



Watch Video Solution

[Watch Video Solution](#)

145. What are antibiotics? Give an example of antibiotics.



[Watch Video Solution](#)

146. Give one example of artificial sweetening agent.



[Watch Video Solution](#)

147. What are antacids?



Watch Video Solution

148. Explain the following terms with suitable examples.

Non-ionic detergents



Watch Video Solution

149. A substance on analysis gave the following percentage composition Na = 43.4% C = 11.3% O =

45.3% Calculate the empirical formula.



[Watch Video Solution](#)

150. Describe the following substances with one suitable example : Disinfectants .



[Watch Video Solution](#)

151. Explain the following terms with one suitable example : Cationic detergents.



[Watch Video Solution](#)

152. Explain the following terms with one suitable example : Enzymes.



Watch Video Solution

153. What are the following substances ? Give one example : Sweetening agents.



Watch Video Solution

154. Explain the following term with one example :
Food preservatives.



[Watch Video Solution](#)

155. Explain the following terms with one suitable example : Enzymes.



[Watch Video Solution](#)

156. An organic compound on analysis gave the following data : C = 57.82% , H = 3.6% and O = 38.58% . Find its empirical formula.



[Watch Video Solution](#)

157. What are anticancer drugs ?



Watch Video Solution

158. Explain the following term with an example :
Antibiotics.



Watch Video Solution

159. Explain the following term with an example :
Antiseptics.



Watch Video Solution

160. Explain the following terms with one suitable example : Analgesics.



Watch Video Solution

161. Explain with example: Detergents.



Watch Video Solution

162. Name two food preservatives.



Watch Video Solution

Watch Video Solution

163. Describe the following giving one example :
Antacids .



Watch Video Solution

164. What are food preservatives ?



Watch Video Solution

165. What is the cause of a feeling of depression
in human beings? Name a drug which can be used

in treating this depression.



[Watch Video Solution](#)

166. What class of drug is Ranitidine ?



[Watch Video Solution](#)

167. If water contains calcium hydrogen carbonate, out of soap and synthetic detergents which one will you use for cleansing clother ?



[Watch Video Solution](#)

168. Which of the following is an antiseptic ? 0.2% phenol, 1% phenol



Watch Video Solution

169. Give an example of artificial sweetener that could have been recommended to diabetic patients.



Watch Video Solution

170. What type of analgesics are chiefly used for the relief of pains of terminal cancer.



Watch Video Solution

171. Piyush's mother used to take aspirin, an analgesic quite often to get relief from body pain. She is becoming habitual of it. Piyush is a science student and he asked his mother not to take overdoses of aspirin, though it is very popular. Overdoses may result into stomach problems.

Why did Piyush stopped his mother to avoid overdoses of aspirin ?



[Watch Video Solution](#)

172. Piyush's mother used to take aspirin, an analgesic quite often to get relief from body pain. She is becoming habitual of it. Piyush is a science student and he asked his mother not to take overdoses of aspirin, though it is very popular. Overdoses may result into stomach problems. Why did Piyush stopped his mother to avoid overdoses of aspirin ?



[Watch Video Solution](#)

173. Sapna a domestic helper of Mrs. Sheela had a wound on her arm but she was not caring for it. Sheela applied dettol on her wound and asked her to show it to a doctor if it does not heal. Answer the following question: Name two other chemical substances of this category.



[Watch Video Solution](#)

174. Sapna a domestic helper of Mrs. Sheela had a wound on her arm but she was not caring for it. Sheela applied dettol on her wound and asked her to show it to a doctor if it does not heal. Answer the following question: Name two other chemical substances of this category.



Watch Video Solution

175. Sapna a domestic helper of Mrs. Sheela had a wound on her arm but she was not caring for it. Sheela applied dettol on her wound and asked

her to show it to a doctor if it does not heal.

Answer the following question: Name two other chemical substances of this category.



Watch Video Solution

176. On the occasion of World Health Day, Dr. Satpal organized a 'health camp' for the poor farmers living in a nearby village. After check-up, he was shocked to see that most of the farmers suffered from cancer due to regular exposure to pesticides and many were diabetic. They distributed free medicines to them. Dr. Satpal

immediately reported the matter to the National Human Rights Commission (NHRC). On the suggestions of NHRC. the government decided to provide medical care, financial assistance, setting up of super-speciality hospitals for treatment and prevention of the deadly disease in the affected villages all over India. Write the values shown by (a) Dr. Satpal (b) NHRC



[Watch Video Solution](#)

177. On the occasion of World Health Day, Dr. Satpal organized a 'health camp' for the poor

farmers living in a nearby village. After check-up, he was shocked to see that most of the farmers suffered from cancer due to regular exposure to pesticides and many were diabetic. They distributed free medicines to them. Dr. Satpal immediately reported the matter to the National Human Rights Commission (NHRC). On the suggestions of NHRC, the government decided to provide medical care, financial assistance, setting up of super-speciality hospitals for treatment and prevention of the deadly disease in the affected villages all over India. Give an example of artificial sweetener that could have been recommended to diabetic patients.



[Watch Video Solution](#)

178. Fill in the blanks- Gun metal is made up of _____, _____ and _____ metals.



[Watch Video Solution](#)

179. Mr. Roy, the principal of one reputed school organized a seminar in which he invited parents and principals to discuss the serious issue of diabetes and depression in students. They all resolved this issue by strictly banning the junk

food in schools and to introduce healthy snacks and drinks like soup, lassi, milk etc. in school canteens. They also decided to make compulsory half an hour physical activities for the students in the morning assembly daily. After six months, Mr. Roy conducted the health survey in most of the schools and discovered a tremendous improvement in the health of students. After reading the above passage, answer the following:

As a student, how can you spread awareness about this issue ?



[Watch Video Solution](#)

180. Mr. Roy, the principal of one reputed school organized a seminar in which he invited parents and principals to discuss the serious issue of diabetes and depression in students. They all resolved this issue by strictly banning the junk food in schools and to introduce healthy snacks and drinks like soup, lassi, milk etc. in school canteens. They also decided to make compulsory half an hour physical activities for the students in the morning assembly daily. After six months, Mr. Roy conducted the health survey in most of the schools and discovered a tremendous improvement in the health of students. After

reading the above passage, answer the following:

What are tranquilizers? Give one example.



[Watch Video Solution](#)

181. Fill in the blanks with appropriate answers-

Brass is made up of _____ and _____ metals.



[Watch Video Solution](#)

182. Seeing the growing cases of diabetes and

depression among young children, Mr. Lugani, the

principal of one reputed school organized a

seminar in which he invited parents and principals. They all resolved this issue by strictly banning junk food in schools and introducing healthy snacks and drinks like soup, lassi milk, etc. in school canteens. They also decided to make compulsory half an hour of daily physical activities for the students in the morning assembly. After six months, Mr. Lugani conducted the health survey in most of the schools and discovered a tremendous improvement in the health of the students. After reading the above passage, answer the following question : What are the values (at least two) displayed by Mr. Lugani ?



Watch Video Solution

183. Seeing the growing cases of diabetes and depression among young children, Mr. Lugani, the principal of one reputed school organized a seminar in which he invited parents and principals. They all resolved this issue by strictly banning junk food in schools and introducing healthy snacks and drinks like soup, lassi milk, etc. in school canteens. They also decided to make compulsory half an hour of daily physical activities for the students in the morning assembly. After six months, Mr. Lugani conducted

the health survey in most of the schools and discovered a tremendous improvement in the health of the students. After reading the above passage, answer the following question : As a student, how can you spread awareness ?



[Watch Video Solution](#)

184. Constantin alloy is made up of _____ and _____ metals.



[Watch Video Solution](#)

185. Fill in the blanks- _____ is the alloy which is made up of copper and zinc metals.



Watch Video Solution

186. Express 903 in roman numbers.



Watch Video Solution

187. Express 904 in roman numbers.



Watch Video Solution

188. Express 905 in roman numbers.



Watch Video Solution

189. Antipyretics are medicinal compounds which

- A. relieve pain
- B. lower body temperature
- C. control malaria
- D. kill other harmful organisms.

Answer:



Watch Video Solution

190. Aspirin is an

A. barbituric acid

B. seconal

C. chloroxylenol

D. acetyl salicylic acid.

Answer:



Watch Video Solution

191. Which of the following is not a tranquilizer ?

A. Barbituric acid

B. Seconal

C. Luminal

D. Phenacetin

Answer:



Watch Video Solution

192. Which of the following is not antibiotic?

A. Chloramphenicol

B. Sulphadiazine

C. Penicillin

D. Bithional.

Answer:



Watch Video Solution

193. 2-Acetoxy benzoic acid is

A. antiseptic

B. antipyretic

C. antibiotic

D. mordant dye.

Answer:



Watch Video Solution

194. Which of the following is not antipyretic?

A. Paracetamol

B. Aspirin

C. Chloramphenicol

D. Phenacetin.

Answer:



Watch Video Solution

195. Chloramphenicol is an: Antifertility drug, Antihistaminic, antiseptic and disinfectant, antibiotic-broad spectrum.

A. antipyretic

B. broad spectrum antibiotic

C. azo dye

D. tranquilizer

Answer:



Watch Video Solution

196. Aspirin is an

A. narcotic

B. antipyretic

C. antimalarial

D. antiseptic.

Answer:



Watch Video Solution

197. Which of the following is used as an antioxidant in food?

A. Saccharin

B. Methylated hydroxy anisole

C. Ormeloxifene

D. Cochineal.

Answer:



Watch Video Solution

198. Sulphonamides act as

- A. hypnotics
- B. pain killer
- C. antimicrobials
- D. None of the above

Answer:



Watch Video Solution

 Watch Video Solution

199. Express 906 in roman numbers.



Watch Video Solution

200. Benadryl is used as

- A. antiseptic
- B. disinfectant
- C. analgesic
- D. antihistamine.

Answer:



Watch Video Solution

201. Which is used as a preservative to protect processed food?

- A. Sodium sulphate
- B. Saccharin
- C. Alitame
- D. Sodium metabisulphite

Answer:



[Watch Video Solution](#)

202. True or False : Mifepristone is used as antifertility drug.

- A. antimicrobial
- B. antimalarial
- C. antifertility drug
- D. tranquilizer

Answer:



[Watch Video Solution](#)

203. Which of the following is not an artificial sweetener ?

A. Sucrolose

B. Alitame

C. Sodium benzoate

D. Aspartame

Answer:



Watch Video Solution

204. Which of the following can possibly be used as analgesic without causing addiction or any mood modification ?

A. Morphine

B. N -Acetyl-paraaminophenol

C. Diazepam

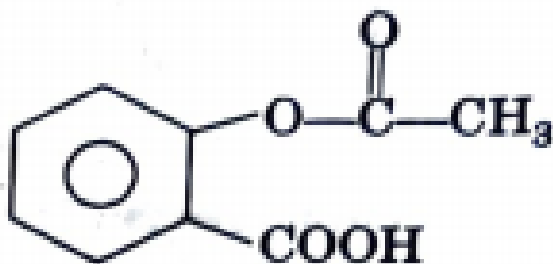
D. Tetrahydrocatenol.

Answer:



Watch Video Solution

205. The following compound is used as



- A. an anti-inflammatory compound
- B. analgesic
- C. hypnotic
- D. antiseptic.

Answer:



Watch Video Solution

206. Amoxicillin is semi-synthetic modification of

A. penicillin

B. streptomycin

C. tetracycline

D. chloramphenicol.

Answer:



Watch Video Solution

207. 2-Acetoxy benzoic acid is

A. antiseptic

B. aspirin

C. antibiotic

D. mordant dye.

Answer:



Watch Video Solution

208. A broad spectrum antibiotic is :

A. paracetamol

B. penicillin

C. aspirin

D. chloramphenicol.

Answer:



Watch Video Solution

209. Which one of the following is employed as a tranquilizer ?

A. Naproxen

B. Tetracycline

C. Chlorpheninamine

D. Equanil

Answer:



Watch Video Solution

210. Which of the following is employed as
Antihistamine ?

A. Chloramphenicol

B. Diphenylhydramine

C. Norothindrone

D. Omeprazole

Answer:



Watch Video Solution

211. Antiseptics and disinfectants either kill or prevent growth of micro-organisms. Identify which of the following statements is not true :

A. Dilute solutions of boric acid and hydrogen peroxide are strong antiseptics.

B. Disinfectants harm the living tissues.

C. A 0.2% solution of phenol is an antiseptic while 1% solution acts as a disinfectant.

D. Chlorine and iodine are used as strong disinfectant .

Answer:



Watch Video Solution

212. Artificial sweetener which is stable under cold conditions only is

A. saccharine

B. sucralose

C. aspartame

D. alitame

Answer:



Watch Video Solution

213. Bithional is generally added to soaps as an additive to function is a/an

A. buffering agent

B. Antiseptic

C. softener

D. dryer

Answer:



Watch Video Solution

214. Which of the following is an analgesic ?

A. Streptomycin

B. Chloromycetin

C. Novalgine

D. Penicillin

Answer:



Watch Video Solution

215. What is tincture of iodine and what is it used for ?

A. aqueous solution of I_2

B. solution of I_2 in aqueous KI

C. alcoholic solution of I_2

D. aqueous solution of KI

Answer:



Watch Video Solution

216. Express 1056 in roman numbers.



Watch Video Solution

217. Which of the following statements is not true?

- A. Some disinfectants can be used as antiseptic at low concentration
- B. Sulphadiazine is a synthetic antibacterial
- C. Pheromones provide chemical means of establishing communication
- D. Norethindrone is a pheromone.

Answer:



Watch Video Solution

218. Fill in the blanks- Coin metal is made up of _____, _____ and _____ metals.



Watch Video Solution

219. Express 907 in roman numbers.



Watch Video Solution

220. Which one of the following is not used as a filler in laundry soaps ?

- A. Sodium silicate
- B. Glycerol
- C. Sodium rosinate
- D. Borax

Answer:



Watch Video Solution

221. Drugs which bind to the receptor site and inhibit its natural function, are called

- A. antagonists

B. agonists

C. enzymes

D. molecular targets

Answer:



Watch Video Solution

222. The drug tegamet is

A. analgesic

B. antidepressant

C. anaesthetic

D. antacid

Answer:



Watch Video Solution

223. Which one of the following is a cationic detergent ? Sodium lauryl sulphate, cetyltrimethyl ammonium bromide, sodium dodecylbenzene sulphonate, Glyceryl palmitate.

A. Sodium lauryl sulphate

B. Cetyltrimethylammonium bromide

C. Sodium dodecylbenzene sulphonate

D. Glyceryl oleate

Answer:



Watch Video Solution

224. Which of the following types of drugs reduces fever?

A. Antiseptics

B. Antipyretics

C. Antibiotics

D. Tranquilizers

Answer:



Watch Video Solution

225. Aspirin is an

A. phenyl salicylate

B. acetyl salicylate

C. methyl salicylic acid

D. acetyl salicylic acid

Answer:



Watch Video Solution

226. A drug that is antipyretic as well as analgesic is

A. Chlordiazepoxide

B. paracetamol

C. chloroquin

D. penicillin

Answer:



Watch Video Solution

227. Which of the following compounds is not an antacid ?

- A. Phenelzine
- B. Ranitidine
- C. Aluminium hydroxide
- D. Cimetidine

Answer:



[Watch Video Solution](#)

228. Which one of the following is a anionic detergent ?

A. Sodium stearate

B. Sodium lauryl sulphate

C. Cetyltrimethyl ammonium bromide

D. Glyceryl oleate

Answer:



[Watch Video Solution](#)

229. Tanquillizers are substances used for the treatment of

- A. cancer
- B. AIDS
- C. mental diseases
- D. physical disorders

Answer:



Watch Video Solution

230. Barbituric acid is used as

A. an antipyretic

B. an antiseptic

C. an antibiotic

D. a tranquilizer

Answer:



Watch Video Solution

231. 2-Acetoxy benzoic acid is

A. antimalaria

B. antidepressant

C. antiseptic

D. antipyretic

Answer:



Watch Video Solution

232. Which of the following is bacteriostatic ?

A. penicillin

B. erythromycin

C. aminoglycoside

D. ofloxacin

Answer:



Watch Video Solution

233. Express 908 in roman numbers.



Watch Video Solution

234. Match the chemicals in column I with their uses in column II

Column I

- A. Sodium perborate
- B. Chlorine
- C. Bithional
- D. Potassium stearate

Column II

- I. Disinfectant
- II. Antiseptic
- III. Milk bleaching agent
- IV. Soap

A. A=I, B=II, C =I, D=IV

B. A=II, B=III, C=IV, D=I

C. A=III, B=I, C =II, D=IV

D. A=IV, B=I, C =II, D=III

Answer:



Watch Video Solution

235. Express 909 in roman numbers.



Watch Video Solution

236. Express 910 in roman numbers.



Watch Video Solution

237. Draw the lewis dot structure of following molecules : N_2



Watch Video Solution

238. The artificial sweetener containing chlorine that has the appearance and taste as that of sugar and is stable at cooking temperature is

- A. Aspartame
- B. Saccharin
- C. Sucralose
- D. Alitame

Answer:



Watch Video Solution

239. Fill in the blanks- Artificial ornaments are made up of _____ alloy.



Watch Video Solution

240. Salts of sorbic acid and propionic acid are used as

- A. antioxidants
- B. flavouring agents
- C. food preservatives

D. nutritional supplements

Answer:



[Watch Video Solution](#)

241. Express 911 in roman numbers.



[Watch Video Solution](#)

242. Fill in the blanks- Magnesium alloy is made up of _____ and _____ metals.



[Watch Video Solution](#)

243. Which of the following is antipyretic as well as analgesic ?

A. Sulphaguanidine

B. Paracetamol

C. Penicillin

D. Phenol

Answer:



Watch Video Solution

244. Express 912 in roman numbers.



Watch Video Solution

245. Express 913 in roman numbers.



Watch Video Solution

246. Express 915 in roman numbers.



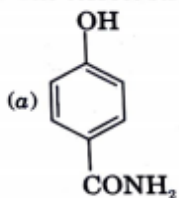
Watch Video Solution

247. Express 916 in roman numbers.

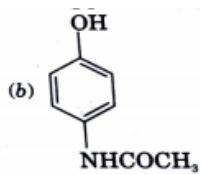
 Watch Video Solution

248. The correct structure of the drug paracetamol is

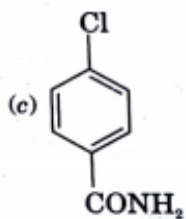
A.



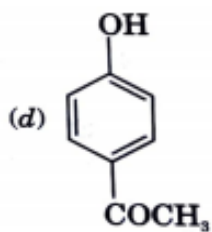
B.



C.



D.



Answer:



 [Watch Video Solution](#)

249. Express 917 in roman numbers.



[Watch Video Solution](#)

250. Fill in the blanks- Utensils are made up of an alloy called _____.



[Watch Video Solution](#)

251. Express 918 in roman numbers.





[Watch Video Solution](#)

252. Express 920 in roman numbers.



[Watch Video Solution](#)

253. Fill in the blanks- Idols are made of _____ alloy.



[Watch Video Solution](#)

254. Express 921 in roman numbers.



Watch Video Solution

255. Which of the following is/are used as antioxidants for food stuffs ?

A. BHA

B. Sodium stearate

C. Alitame

D. Sodium sulphite

Answer:



Watch Video Solution

256. Fill in the blanks- Electrical wires are made up of _____ alloy.



Watch Video Solution

257. Express 922 in roman numbers.



Watch Video Solution

258. Arms are made up of _____ alloy



Watch Video Solution

259. Which of the following is not an antiseptic drug?

- A. Bithional
- B. Hydrogen Peroxide
- C. Pethidine
- D. Diclofenac sodium

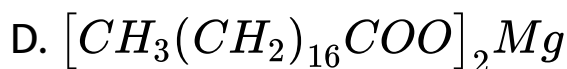
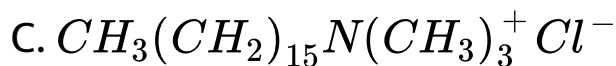
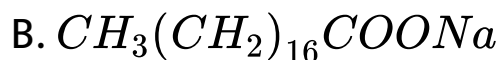
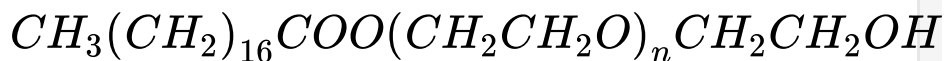
Answer:



Watch Video Solution

260. What are synthetic detergents ?

A.



Answer:



Watch Video Solution

261. Give appropriate answer in the given blank-

Parts of machines are made up of _____ alloy.



Watch Video Solution

262. Assertion : Aspirin can cause ulcer in stomach

when taken empty stomach. Reason : Aspirin gets

hydrolysed to salicylic acid in stomach where pH

is 2.



Watch Video Solution

263. NaCl is the formula of a chemical compound called _____.



[Watch Video Solution](#)

264. Structure of aircrafts are made up of _____ alloy.



[Watch Video Solution](#)

265. Magnets are made up of _____ alloy.



[Watch Video Solution](#)

266. Common salt is the common name of a chemical compound called _____.



Watch Video Solution

267. Fill in the blanks- Mixture of zinc sulphide and barium sulphate form a reagent called _____.



Watch Video Solution

268. Assertion : Sodium-2-dodecyl benzene sulphonate is a biodegradable detergent. Reason : Detergents having highly branched chains are biodegradable.



Watch Video Solution

269. Assertion : Saccharin is an artificial sweetener. Reason : It has a high calorific value.



Watch Video Solution

270. Answer the following question- What is common salt?



Watch Video Solution

271. Express 1057 in roman numbers.



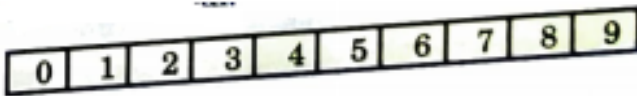
Watch Video Solution

272. Express 1060 in roman numbers.



Watch Video Solution

273. How many of the following are food preservatives ? potassium metabisulphite, aspartame, sodium benzoate, BHA, saccharin, alitame, dulcin.



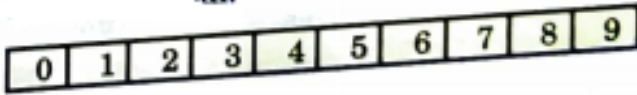
[Watch Video Solution](#)

274. Express 1058 in roman numbers.



[Watch Video Solution](#)

275. The number of antibiotics among the following is ampicillin, sulphanimide, veronal, equanil, serotonin, luminal, seconal.



[Watch Video Solution](#)

276. In Which season is the paddy crop grown?



[Watch Video Solution](#)

277. Which part of the paddy crop we eat?



[Watch Video Solution](#)

278. Which statement about aspirin is not true?

- A. Aspirin belongs to narcotic analgesics.
- B. It is effective in relieving pain.
- C. It has antiblood clotting action.
- D. It is a neurologically active drug.

Answer:



[Watch Video Solution](#)

279. The most useful classification of drugs for medicinal chemists is: on the basis of chemical structure, on the basis of drug action, on the basis of molecular targets, on the basis of pharmacological effect.

- A. on the basis of chemical structure.
- B. on the basis of drug action.
- C. on the basis of molecular targets.
- D. on the basis of pharmacological effect.

Answer:



Watch Video Solution

280. Which of the following statements is correct?

- A. Some tranquilisers function by inhibiting the enzymes which catalyse the degradation of noradrenaline.
- B. Tranquilisers are narcotic drugs.
- C. Tranquilisers are chemical compounds that do not affect the message transfer from nerve to receptor.

D. Tranquilisers are chemical compounds that can relieve pain and fever.

Answer:



Watch Video Solution

281. Salvarsan is arsenic containing drug which was first used for the treatment of

A. syphilis

B. typhoid

C. meningitis

D. dysentery

Answer:



Watch Video Solution

282. A narrow spectrum antibiotic is active against _____ .

- A. gram positive or gram negative bacteria.
- B. gram negative bacteria only.
- C. single organism or one disease.

D. both gram positive and gram negative bacteria.

Answer:



Watch Video Solution

283. The compound that causes general antidepressant action on the central nervous system belongs to the class of

A. analgesics

B. tranquilizers

C. narcotic analgesics

D. antihistamines

Answer:



Watch Video Solution

284. Compound which is added to soap to impart antiseptic properties is

A. sodium laurylsulphate

B. sodium dodecylbenzenesulphonate

C. rosin

D. bithional

Answer:



Watch Video Solution

285. Equanil is

A. artificial sweetener

B. tranquilizer

C. antihistamine

D. antifertility drug

Answer:



Watch Video Solution

286. Which of the following enhances lathering property of soap? Sodium carbonate, sodium rosinate, sodium stearate, Trisodium phosphate.

- A. Sodium carbonate
- B. Sodium rosinate
- C. Sodium stearate
- D. Trisodium phosphate

Answer:



Watch Video Solution

287. Glycerol is added to soap. It functions

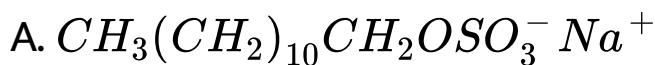
- A. as a filler.
- B. to increase leathering.
- C. to prevent rapid drying.
- D. to make soap granules.

Answer:

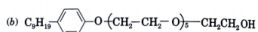


Watch Video Solution

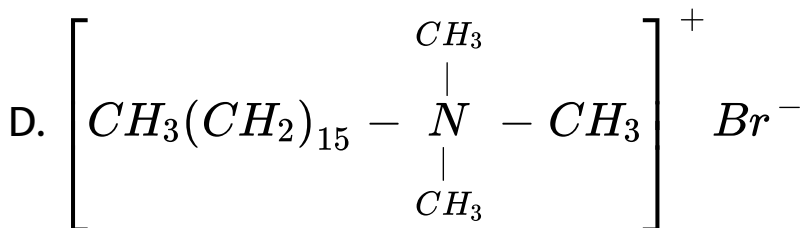
288. Which of the following is an example of liquid dishwashing detergent?



B.



C.



Answer:



Watch Video Solution

289. Polyethyleneglycols are used in the preparation of which type of detergents ?

- A. Cationic detergents
- B. Anionic detergents
- C. Non-ionic detergents
- D. Soaps

Answer:



[Watch Video Solution](#)

290. Which part of the wheat crop we eat?



[Watch Video Solution](#)

291. Which of the following statements is not true about enzyme inhibitors?

- A. Inhibit the catalytic activity of the enzyme.
- B. Prevent the binding of substrate.

C. Generally a strong covalent bond is formed between an inhibitor and an enzyme.

D. Inhibitors can be competitive or non-competitive.

Answer:



Watch Video Solution

292. Which of the following chemicals can be added for sweetening of food items at cooking temperature and does not provide calories ?

A. Sucrose

B. Glucose

C. Aspartame

D. Sucrolose

Answer:



Watch Video Solution

293. Which of the following will not enhance nutritional value of food ?

A. Minerals

B. Artificial sweeteners

C. Vitamins

D. Aminoacids

Answer:



Watch Video Solution

294. Which of the following statements are correct ?

A. Majority of receptor proteins are embedded in the cell membrances .

- B. The active site of receptor proteins opens on the inside region of the cell .
- C. Chemical messengers are received at the binding sites of receptor proteins.
- D. Shape of receptor doesn't change during attachment of messenger.

Answer:



Watch Video Solution

295. Which of the following are not used as food preservatives?

A. Table salt

B. Sodium hydrogencarbonate

C. Cane sugar

D. Benzoic acid

Answer:



Watch Video Solution

296. Compounds with antiseptic properties are

----- .

A. $CHCl_3$

B. CHI_3

C. Boric acid

D. 0.3 ppm aqueous solution of Cl_2

Answer:



Watch Video Solution

297. Which of the following statements are correct?

A. Hypnotics or sleep producing agents.

B. These are tranquilizers.

C. Non-narcotic analgesics.

D. Pain reducing without disturbing the nervous system.

Answer:



Watch Video Solution

298. Which of the following are sulpha drugs ?

A. Sulphapyridine

B. Prontosil

C. Salvarsan

D. Nardil

Answer:



Watch Video Solution

299. Which of the following are antidepressants ?

A. Iproniazid

B. Phenezine

C. Equanil

D. Salvarsan

Answer:



Watch Video Solution

300. Which of the following statements are correct ?

A. An antibacterial fungus .

B. Ampicillin is its synthetic modification.

C. It has bacteriostatic effect.

D. It is a broad spectrum antibiotic.

Answer:



Watch Video Solution

301. Which of the following compounds is not coloured?

A. Sodium carbonate

B. Sodium hydrogencarbonate

C. Aluminium carbonate

D. Magnesium hydroxide

Answer:



Watch Video Solution

302. What are antacids?

A. Ranitidine

B. Brompheniramine

C. Terfenadine

D. Cimetidine

Answer:



Watch Video Solution

303. True or False : Equanil, used as tranquilizer, is a derivative of barbituric acid.

A. Tranquilizers

B. Non-narcotic analgesic

C. Antiallergic drugs

D. Neurologically active drugs

Answer:



Watch Video Solution

304. Which one of the following is a anionic detergent ?

- A. Sodium salts of sulphonated long chain alcohol.
- B. Ester of stearic acid and polyethylene glycol.
- C. Quarternary ammonium salt of amine with acetate ion.

D. Sodium salts of sulphonated long chain hydrocarbons.

Answer:



Watch Video Solution

305. Which of the following statements are correct?

A. Cationic detergents have germicidal properties

- B. Bacteria can degrade the detergents containing highly branched chains.
- C. Some synthetic detergents can give foam even in ice cold water.
- D. Synthetic detergents are not soaps.

Answer:



Watch Video Solution

306. Express 1059 in roman numbers.



Watch Video Solution

307. Match the soaps given in Column I with items given in Column II.

Column I	Column II
(a) Soap chips	(i) dried miniature soap bubbles
(b) Soap granules	(ii) small broken pieces of soap formed from melted soaps
(c) Soap powder	(iii) soap powder + abrasives + builders (Na_2CO_3 , Na_3PO_4)
(d) Scouring soap	(iv) soap powder + builders like Na_2CO_3 and Na_3PO_4



[Watch Video Solution](#)

308. Express 1061 in roman numbers.



[Watch Video Solution](#)

309. Express 1062 in roman numbers.



Watch Video Solution

310. Express 1063 in roman numbers.



Watch Video Solution

311. Match the classes of drugs given in Column I with their action given in Column II.

Column I	Column II
(a) Analgesics	(i) Inhibit the growth of microorganisms, can be given orally.
(b) Antiseptics	(ii) Treatment of stress
(c) Antihistamines	(iii) Applied to inanimate objects
(d) Antacids	(iv) Prevents the interaction of histamine with its receptor
(e) Tranquilisers	(v) Pain killing effect
(f) Antibiotics	(vi) Applied to diseased skin surfaces
(g) Disinfectants	(vii) Treatment of acidity



Watch Video Solution

312. Assertion : Penicillin (G) is an antihistamine.

Reason : Penicillin (G) is effective against gram positive as well as gram negative bacteria.

A. (a) Assertion and reason both are correct and reason explains the assertion.

B. (b) Assertion and reason both are correct statements but reason does not explain assertion.

C. (c) Assertion is correct statement, reason is wrong statement

D. (d) Assertion is wrong statement, reason is correct statement.

Answer:



Watch Video Solution

313. Give an example of a sulpha drug.



Watch Video Solution

314. Where are receptors located in the body?



Watch Video Solution

315. Which forces are involved in holding the drugs to the active site of enzymes ?



Watch Video Solution

316. Give the technical terms used for the following:

A juxtaposition between two neurons or between one neuron and a muscle fibre.



[Watch Video Solution](#)

317. Assertion : Sulphide ores are concentrated by Froth Flotation method. Reason : Cresols stabilise the froth in Froth Flotation method.



[Watch Video Solution](#)

318. Assertion : Small quantity of soap is required to prepare a stable emulsion. Reason : Soaps

lowers the interfacial tension between oil and water.



[Watch Video Solution](#)

319. Which forces are involved in holding the drugs to the active site of enzymes ?



[Watch Video Solution](#)

320. Which forces are involved in holding the drugs to the active site of enzymes ?



[Watch Video Solution](#)

Watch Video Solution

321. What is e.m.f. of the cell, when the cell reaction attains equilibrium ?



Watch Video Solution

322. Drugs which bind to the receptor site and inhibit its natural function, are called



Watch Video Solution

323. Which of the following are not used as food preservatives?



Watch Video Solution

324. Assertion : Preservatives are added to food items. Reason: Preservatives inhibit the growth of microorganisms.



Watch Video Solution

325. Which of the following is not an artificial sweetener ?



Watch Video Solution

326. Is



a

homopolymer or a copolymer?



Watch Video Solution

327. Write the name and structure of the monomers of Buna-S.



Watch Video Solution

328. Give one example of a neutral detergent..



Watch Video Solution

329. Name a substance which can be used as an antiseptic as well as disinfectant.



Watch Video Solution

330. Why is bithional added to soap ?



Watch Video Solution

331. A broad spectrum antibiotic is :



Watch Video Solution

332. What are biodegradable polymers ? Give example.



Watch Video Solution

[Watch Video Solution](#)

333. What is vulcanization of rubber ? What are the advantages of vulcanized rubber ?



[Watch Video Solution](#)

334. Explain the following with suitable examples.

Antihistamines



[Watch Video Solution](#)

335. Explain the following terms with one suitable example : Analgesics.



Watch Video Solution

336. Why are detergents non-biodegradable while soaps are biodegradable?



Watch Video Solution

337. Write the names and structures of the monomers of the following polymers: Nylon-6,6 .



[Watch Video Solution](#)

338. Write the names and structures of the monomers of the following polymers : Bakelite .



[Watch Video Solution](#)

339. Write the name and structure of monomers of the following polymers : Teflon



[Watch Video Solution](#)

340. Explain the following with examples :
Elastomers.



Watch Video Solution

341. Explain the following with examples :
Biodegradable polymers.



Watch Video Solution

342. Explain the following with examples : Step
growth polymerisation.



[Watch Video Solution](#)

343. What are antacids?



[Watch Video Solution](#)

344. Explain the following with example : Artificial sweetening agents.



[Watch Video Solution](#)

345. Explain the following terms with one suitable example : Antifertility drugs.



Watch Video Solution

346. Why do drugs designed to cure ailments in one organ in the body not affect the other part? Explain with an example.



Watch Video Solution

347. Low level of noradrenaline is the cause of depression. What type of drugs are needed to cure this problem ? Name two drugs.



Watch Video Solution

348. Write the mechanism of free radical polymerisation of ethene.



Watch Video Solution

349. Write two differences between addition and condensation polymerisation.



Watch Video Solution

350. How do thermoplastic differ from thermosetting polymers ?



Watch Video Solution

351. What are artificial sweetners ?



Watch Video Solution

352. Describe the cleansing action of detergents.



Watch Video Solution