



# BIOLOGY

## BOOKS - BETTER CHOICE PUBLICATION

### HUMAN REPRODUCTION

#### Very Short Answer Type Questions

1. What is Oestrous cycle?



[Watch Video Solution](#)

2. Why is urethra of male called urinogenital canal?



**Watch Video Solution**

3. Which part of female genital tract acts as womb?



**Watch Video Solution**

4. At what stage is mammalian embryo implanted in uterus?



**Watch Video Solution**

5. Which two hormones control parturition?



**Watch Video Solution**

6. When the pregnancy is established?



**Watch Video Solution**

7. Give the term used for the period between Fertilization and Birth of a Young One.



[Watch Video Solution](#)

8. On which day does the ovulation occur in human female ?



[Watch Video Solution](#)

**9.** Name the sperm lysin secreted by acrosome of human sperm.



**Watch Video Solution**

**10.** Name the sex hormone secreted by human male.



**Watch Video Solution**

**11.** Name two types of cells present in germinal epithelium of seminiferous tubule.



**Watch Video Solution**

**12.** Name sex hormone secreted by human female.



**Watch Video Solution**

**13.** What is the role of Sertoli cells ?



[Watch Video Solution](#)

**14.** Name the hormone regulating the puberty in human males.



[Watch Video Solution](#)

**15.** Name two sex hormones secreted by human females.



[Watch Video Solution](#)

**16.** Name the hormone regulating the puberty in human females.



**Watch Video Solution**

**17.** Name two chemical substances released by sperm during fertilization.



**Watch Video Solution**

**18.** Name the birth hormone in human female.







[Watch Video Solution](#)

**19.** Why testes are lodged in the scrotum outside the body of male human beings?



[Watch Video Solution](#)

**20.** Name the aperture of fallopian funnel which receives the ovum released from the ovary in humans.



[Watch Video Solution](#)

21. Why fertilization is also called syngamy ?



[Watch Video Solution](#)

22. Name the part of human female genital tract where foetus develops.



[Watch Video Solution](#)

23. Which ducts transfer spermatozoa from rete testis to the epididymis?



[Watch Video Solution](#)

24. Why middle piece of sperm called its power house ?



[Watch Video Solution](#)

25. Name the hormone secreted by corpus luteum.



[Watch Video Solution](#)

**26.** What is Corpus Luteum ? Name a hormone secreted by it.



**Watch Video Solution**

**27.** What is parturition ? Name the hormone involved in induction of parturition.



**Watch Video Solution**

**28.** What are Leydig cells ? Write down their functions.



**Watch Video Solution**

**29.** Name two hormones which control implantation.



**Watch Video Solution**

**Very Short Answer Type Questions Most Expected Questions**

1. Where is acrosome present in humans ?

write its function.



[Watch Video Solution](#)

2. Write the location and functions of sertoli cells in human.



[Watch Video Solution](#)

3. What is corpus albicans?



[Watch Video Solution](#)

4. Where does fertilisation take place?



[Watch Video Solution](#)

5. Which part in the male reproduction system stores sperms?



[Watch Video Solution](#)

1. What is placenta?



**Watch Video Solution**

2. What are inguinal canal?



**Watch Video Solution**

3. Where are leydig cells located? What is their function?







[Watch Video Solution](#)

4. Distinguish between a blastos and gamete.



[Watch Video Solution](#)

5. Both Meiosis and Fertilization are essential to maintain chromosome number, constant.

Why?



[Watch Video Solution](#)

6. Write the differences between stem and root.



[Watch Video Solution](#)

7. List the functions of testosterone and estrogen.



[Watch Video Solution](#)

8. Write any four characteristics of cleavage.



[Watch Video Solution](#)

9. Write the functions of placenta?



[Watch Video Solution](#)

10. How do leydig's cells help in spermatogenesis?



[Watch Video Solution](#)

**11.** Distinguish between Menstrual and Oestrous Cycle.



**Watch Video Solution**

**12.** What is Corpus Luteum ? Name a hormone secreted by it.



**Watch Video Solution**

**13.** What is puberty and when does it occur in a human male and human female?



**Watch Video Solution**

**14.** Why scrotal sacs are present outside the body?



**Watch Video Solution**

**15.** What is the major composition of seminal fluid ?



**Watch Video Solution**

**16.** Human egg (ovum) has an animal pole. Describe briefly the two events that take place at this pole.



**Watch Video Solution**

**17.** What is parturition ? Name the hormone involved in induction of parturition.



**Watch Video Solution**

**18.** What is Colostrum ? Why it is preferred over normal milk ?



**Watch Video Solution**

**19.** Define menstrual cycle. Name any two hormones which regulate this process.



**Watch Video Solution**

**20.** Where are Leydig's cells present ? What is their role in reproduction?



**Watch Video Solution**



**21.** Name the hormone responsible for the descent of testes into the scrotum. Why does the failure of the process result in sterility ?



**Watch Video Solution**

**22.** Differentiate blastulation and gastrulation.



**Watch Video Solution**

**23.** Differentiate between morula and blastula.



[Watch Video Solution](#)

**24.** During early lactation, what is the specific name for first milk? What is its function in new born human baby ?



[Watch Video Solution](#)

**25.** Differentiate between sperm and ova.



[Watch Video Solution](#)

**26.** How is corpus luteum formed? What is its function?



**Watch Video Solution**

**27.** What is spermatogenesis ? Briefly describe the process of spermatogenesis in human male.



**Watch Video Solution**

**28.** What is the role of estrogens in females?

Where are they produced?



**Watch Video Solution**

**29.** Draw labelled diagram of female reproductive system.



**Watch Video Solution**

**30.** Draw a well labelled diagram of male reproductive system of man.



**Watch Video Solution**

**31.** Draw a labelled diagram of sections through ovary.



**Watch Video Solution**

**32.** Draw a well labelled diagram of L.S of Testis of man.



**Watch Video Solution**

**33.** What is Oogenesis ? Briefly describe the process of Oogenesis in human female.



**Watch Video Solution**

**34.** Draw a well labelled diagram of Human spermatozoan.



**Watch Video Solution**

**35.** Differentiate between spermatogenesis and oogenesis.



**Watch Video Solution**

**36.** Define gametogenesis. List two types, Tabulate two difference between them.



**Watch Video Solution**

**37.** Differentiate blastulation and gastrulation.



**Watch Video Solution**

**38.** Write function of :

Corpus luteum





**Watch Video Solution**

**39. Write function of :**

Endometrium



**Watch Video Solution**

**40. What is function of Acrosome.**



**Watch Video Solution**

**41.** Write the functions of :

Leydig's cells.



**Watch Video Solution**

**42.** Write functions of Fimbriae



**Watch Video Solution**

**43.** Write functions of Scrotum



**Watch Video Solution**

**44.** Differentiate corpus luteum and graafian follicles.



**Watch Video Solution**

**45.** Write functions of :

Sperm tail



**Watch Video Solution**

**46.** Write functions of :

Epididymis



**Watch Video Solution**

**47.** Write functions of Scrotum



**Watch Video Solution**

**48.** Define oogenesis. Where does it occur ?

Tabulate one difference between

spermatogenesis and oogenesis.



[Watch Video Solution](#)

**49.** What is ovulation ? Where does it occur ?

What is formed from the Graafian follicle after ovulation ?



[Watch Video Solution](#)

**50.** Draw a well labelled diagram of structure of Human ovum.



[Watch Video Solution](#)

**51.** Draw structure of mature graafian follicle.



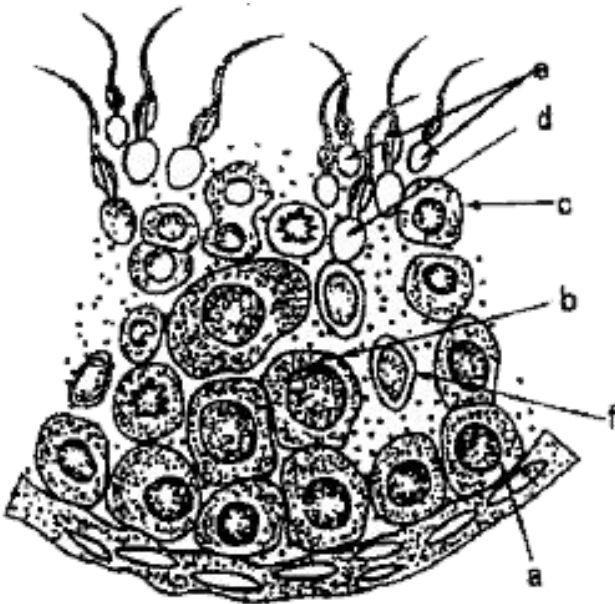
[Watch Video Solution](#)

**52.** A suitable temperature is maintained inside the testes by involuntary movements of the muscles that connect the scrotum to the body wall. Why scrotum is called as temperature regulator of testis ?



Watch Video Solution

53. Study the figure given

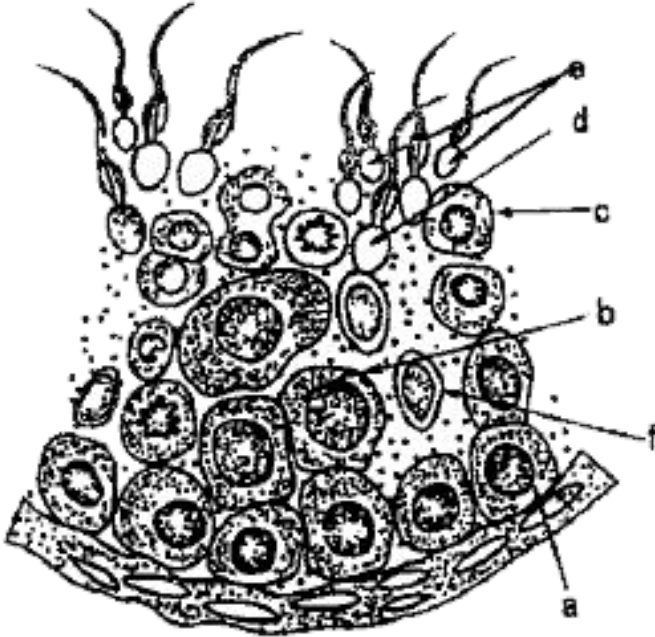


Pick out and name the cells that undergo spermiogenesis.



Watch Video Solution

54. Study the figure given

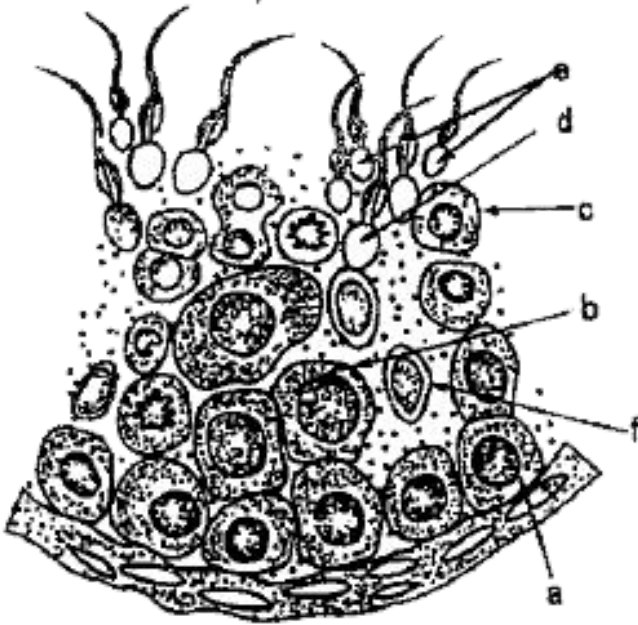


Name 'a' and 'b' cells. What is the difference between them with reference to the number of chromosomes ?

 [Watch Video Solution](#)



55. Study the figure given

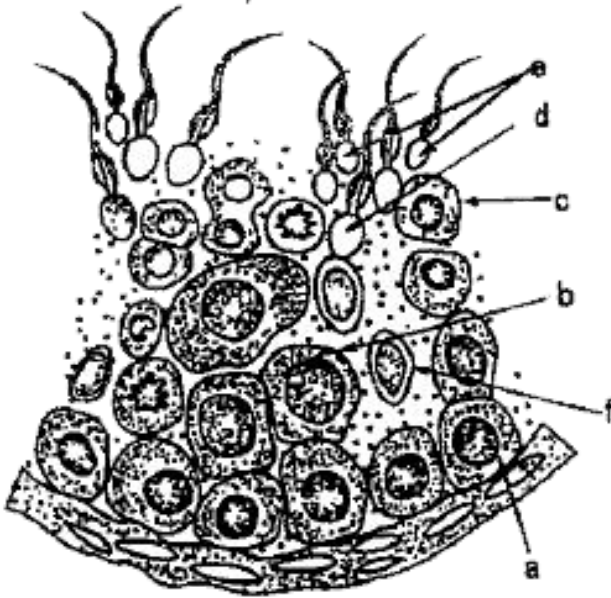


Pick out and name the motile cells.



[Watch Video Solution](#)

56. Study the figure given

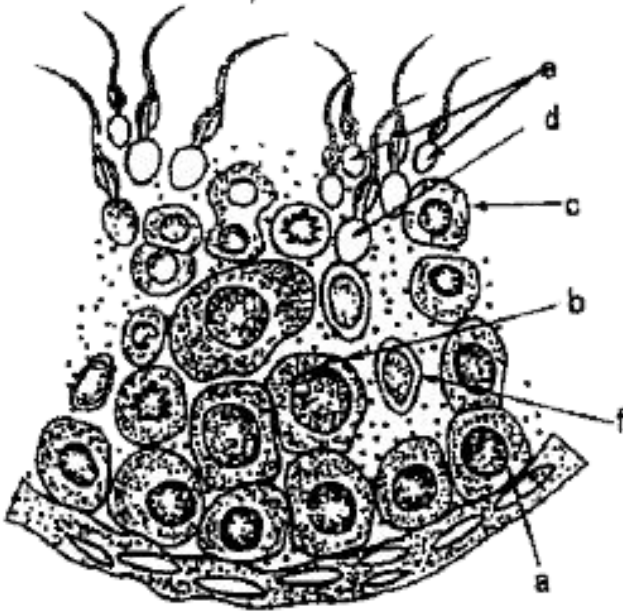


What is 'f' cell ? Mention its function.



[Watch Video Solution](#)

57. Study the figure given



Name the structure of which the given diagram is a part.



**Watch Video Solution**

**58.** Where do the signals for parturition originate from in humans?



**Watch Video Solution**

**59.** Why is it important to feed the newborn babies on colostrum?



**Watch Video Solution**

**60.** Name the embryonic stage that gets implanted in the uterine wall of human female.



**Watch Video Solution**

**61.** When and where do chorionic villi appear in humans? State their function.



**Watch Video Solution**

**62.** Differentiate between vasa deferentia and vasa efferentia.



**Watch Video Solution**

**63.** Point out the differences in male and female urethra.



**Watch Video Solution**

**64.** What do you understand by the development of an embryo. Support your answer with the help of suitable diagrams.



**Watch Video Solution**

## Short Answer Type Questions Most Expected Questions

**1.** What is role played by luteinizing hormone in males and females?



**Watch Video Solution**

2. What is placenta?



[Watch Video Solution](#)

3. Write two major functions each of testis and ovary.



[Watch Video Solution](#)

**Long Answer Type Questions**



1. Where does Oogenesis occur in humans?

Describe the stages of the process.



**Watch Video Solution**

2. Describe the Chemical events fertilization of

Mammalian egg.



**Watch Video Solution**

3. Why is human placenta referred to as Haemochorial type? Name the hormone it secretes to facilitate parturition.



[Watch Video Solution](#)

4. Both Meiosis and Fertilization are essential to maintain chromosome number, constant. Why?



[Watch Video Solution](#)

5. How is corpus luteum formed? What is its function?



[Watch Video Solution](#)

6. Describe the process of gametogenesis in the male sex organs.



[Watch Video Solution](#)

7. Draw a label, explain the male reproductive system of man.



**Watch Video Solution**

8. Describe the structure of mammalian testis with the help of labelled diagram.



**Watch Video Solution**

**9.** What is Menstrual Cycle? Describe the role of FSH, LH, Oestrogens and Progesterone in menstrual cycle.



**Watch Video Solution**

**10.** Describe the ultra-structure of human sperm with the help of a labelled diagram.



**Watch Video Solution**

**11.** What is spermatogenesis ? Briefly describe the process of spermatogenesis in human male.



**Watch Video Solution**

**12.** What are foetal membranes. Give their names. Mention the function of each membrane.



**Watch Video Solution**

**13.** Describe human female reproductive system with labelled diagram.



**Watch Video Solution**

**14.** Explain the role of the following hormones with reference to Menstrual cycle : (i) FSH, (ii) LH, (iii) Estrogen, (iv) Progesterone,



**Watch Video Solution**

**15.** Describe the formation and fate of three germ layers in a mammalian embryo.



**Watch Video Solution**

**16.** At which stage of life does oogenesis begin in human females.



**Watch Video Solution**



**17.** Name the organ where oogenesis gets completed in human females.



**Watch Video Solution**

**18.** Give a schematic representation of oogenesis in human females.



**Watch Video Solution**

**19.** What do you call the area of a human ovum from where the sperm makes the entry ?



**Watch Video Solution**

**20.** Name the enzyme produced by the sperm to facilitate its entry.



**Watch Video Solution**

**21.** Draw a well labelled diagram of structure of Human ovum.



**Watch Video Solution**

**22.** Describe in detail the accessory glands of male and female humanbeing.



**Watch Video Solution**

**23.** What is cleavage ? Write down its characteristics.



**Watch Video Solution**

**24.** Differentiate between spermatogenesis and oogenesis.



**Watch Video Solution**

**25.** Explain the role of pituitary and the ovarian hormones in menstrual cycle in human female.



**Watch Video Solution**

**26.** Write the functions of :

Corpus luteum



**Watch Video Solution**

**27. Write the functions of :**

Endometrium



**Watch Video Solution**

**28. Write the functions of :**

Acrosome.



**Watch Video Solution**

**29.** Write functions of :

Sperm tail



**Watch Video Solution**

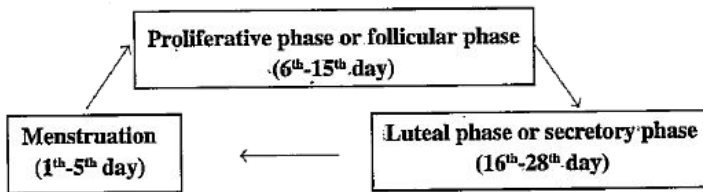
**30.** Write the functions of :

Fimbriae



**Watch Video Solution**

31. The events of the menstrual cycle are represented below. Answer the question following the diagram :



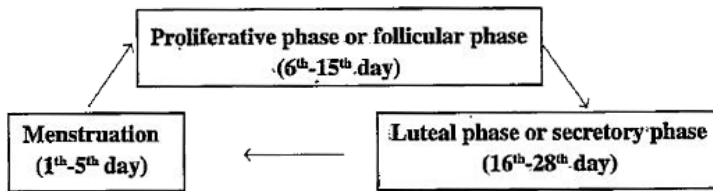
- (a) State the levels of FSH, LH and progesterone simply by mentioning high or low around 13th, 14th day. (b) 21st to 23rd day. (c) In which of the above mentioned phases does the egg travel to the fallopian tube?



[Watch Video Solution](#)



**32.** Give below is a flow chart showing ovarian changes during menstrual cycle. Fill in the space with the hormonal factor/s responsible for the events shown.



**Watch Video Solution**

**33.** Differentiate between proliferative and secretory phases.



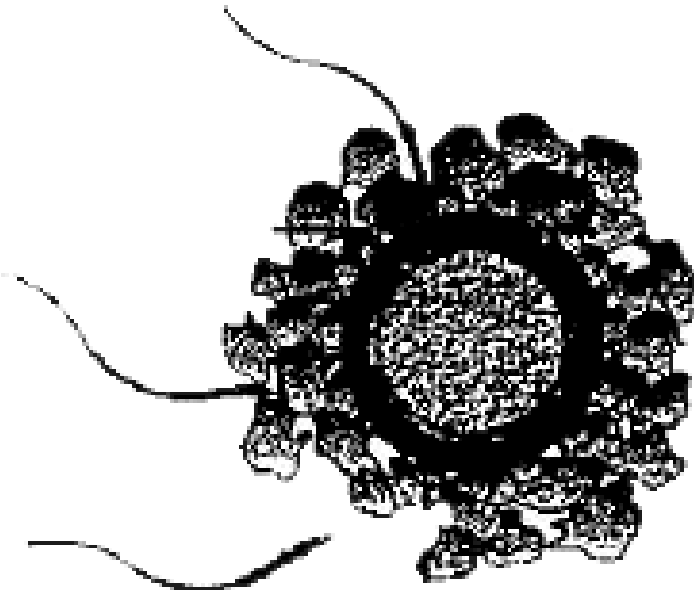
**Watch Video Solution**

**34.** Differentiate spermiogenesis and spermiation.



**Watch Video Solution**

35. One of the sperms is observed to penetrate 'a' of the ovum, as shown in the above diagram. Name 'a'



Watch Video Solution

**36.** How is the sperm able to do so?



**Watch Video Solution**

**37.** Where exactly in the fallopian tube does this occur?



**Watch Video Solution**

**38.** Explain the events thereafter upto morula stage.



 [Watch Video Solution](#)

**39.** Name the cells that nourish the germ cells in the testes. Where are these cells located in the testes?



[Watch Video Solution](#)

**40.** Name the stage of the human embryo that gets implanted in the uterus and draw its labelled diagram.



[Watch Video Solution](#)

