



BIOLOGY

BOOKS - JMD BIOLOGY (PUNJABI ENGLISH)

A Gift Paper from the publisher

Exercise

1. 8-nucleate embryo sac in flowering plant is

- A. Monosporic
- B. Bisporic
- C. Tetrasporic
- D. All of the above

Answer:



Watch Video Solution

2. What happens during spermatogenesis

- A. Mitosis

B. Meiosis

C. both (a) and (b)

D. Metamorphosis

Answer:



Watch Video Solution

3. What is function of copper-T

A. Stops cleavage

B. Stops fertilization

C. Checks mutation

D. Stops gastrulation

Answer:



Watch Video Solution

4. ABO blood group is based on:

A. co-dominance

B. Incomplete dominance

C. Epitasis

D. Multiple allele

Answer:



Watch Video Solution

5. Test cross of dihybrid ratio 1:1:1:1 .It proves that:

A. F_1 hybrid produces four different progenesis

B. F_2 hybrid in homozygous

C. Two different progenies are produced by

P_1

D. F_2 hybrid is heterozygous

Answer:



Watch Video Solution

6. If F_1 generation has all tall progenies and ratio of F_2 generation is 3:1 (Tall:Dwarf), then it proves:

A. Law of independent assortment

B. Law of segregation

C. Law of dominance

D. Incomplete dominance

Answer:



Watch Video Solution

7. Which particular process was used by Meselson and Franklin in order to study the semi-conservative replication of DNA

A. Centrifugation

B. Chromatography

C. density gradient centrifugation

D. Buoyant density centrifugation

Answer:



Watch Video Solution

8. DNA was first discovered by,

A. J.D. Watson

B. Francis Crick

C. Friedrich-Miescher

D. H.G. Khurana

Answer:



Watch Video Solution

9. Which of the following is purely inactive?

A. Euchromatin

B. Heterochromatin

C. both (a) and (b)

D. None of these

Answer:



Watch Video Solution

10. DNA replication includes:

A. DNA ligase

B. DNA polymerase and ligase

C. RNA polymerase

D. All of the above

Answer:



Watch Video Solution

11. Hodgkin's disease is:

A. Cancer of WBCS

B. Cancer of liver

C. Cancer of lymphoid tissue

D. Cancer of mammary glands

Answer:



Watch Video Solution

12. Most of the plant derived allergies in man are caused by:

A. Seeds

B. Leaves

C. Pollens

D. Roots hairs

Answer:



Watch Video Solution

13. Bubonic plague is transmitted by:

A. Rat flea

B. Cockroach

C. Aedes

D. Anopheles

Answer:



Watch Video Solution

14. The segment of antigen that is specifically recognized by antibody is known as

- A. Epitope
- B. Memory regions
- C. Non-determinants
- D. Self-limitation

Answer:



15. The 'clot buster' produced by Streptococcus and modified by genetic engineering is

- A. Streptokinase
- B. Penicillin
- C. Strepsils
- D. Cyclosporin A

Answer:



Watch Video Solution

16. Which one is involved in biogas production?

- A. Methanococcus
- B. Halococcus
- C. Thermoproteus
- D. Thermoplasmam

Answer:



Watch Video Solution

17. Fill in the blanks

_____ is produced by yeast *Monascus*.



Watch Video Solution

18. Fill in the blank

_____ is caused by *Mycobacterium leprae*.



Watch Video Solution

19. Fill in the blank

Unpaired base pair of DNA end is called _____



Watch Video Solution

20. Fill in the blanks

_____ dissolves bacterial cell wall.



Watch Video Solution

21. Fill in the blanks

ADA deficiency can be cured by__.



Watch Video Solution

22. Fill in the blanks

PCR is now routinely used to detect__.



Watch Video Solution

23. True/false

Erythromycin is obtained from *Streptomyces venezuelae*



Watch Video Solution

24. true or false

mortality increases the population of the species in an area.



Watch Video Solution

25. true or false

body temperature of a man is 37°C.



Watch Video Solution

26. true or false

organisms tolerating a wide range of salinities
are stenohaline.



Watch Video Solution

27. True and False Type Questions

Fishes outnumbered all vertebrates.



[Watch Video Solution](#)

28. True and False Type Questions

India has around 1000 varieties of rice.



[Watch Video Solution](#)

29. The generative cell of a two-celled pollen divides in the pollen tube but not in a three-celled pollen. Give reasons.



Watch Video Solution

30. Which type of cell division forms spermatids from secondary spermatocytes?



Watch Video Solution

31. Comment on the essential features required for an ideal contraceptive.



Watch Video Solution

32. All reproductive tract infections or RTIs are STDs but all STDs are not RTIs. Justify with example.



Watch Video Solution

33. How does a mutagen induce mutation?

Explain with example.



Watch Video Solution

34. Do you think that alternative splicing of exons main enable a structural gene to code for several isoprotein from one and same gene? If yes ,how? If not,why so?



Watch Video Solution

35. Comment on the utility of variability in the number of tandem repeats during DNA fingerprinting.



Watch Video Solution

36. What are Interferons ? How do they help in controlling the disease ?



Watch Video Solution

37. Why do we prefer to call secondary wastewater treatment as biological treatment?



Watch Video Solution

38. Do biomolecules (DNA ,protein)exhibit biological activity in anhydrous conditions?



Watch Video Solution

39. Discuss the advantages of GMOS.



Watch Video Solution

40. Define Habitat and Ecological niche.



Watch Video Solution

41. Write one difference between pathogen and parasite.



Watch Video Solution

42. Why is genetic variation important on the planet *Rauwolfia vomitoria*?



Watch Video Solution

43. When a Snapdragon plant bearing pink colour flower was selfed, it was found that 69 plants were having red coloured flowers. What would be the number of plants bearing pink flowers and white flowers? Show with the help

of Punnett square. Identify the principle of inheritance involved in this experiment.



[Watch Video Solution](#)

44. Why is human genome project called a mega project ?



[Watch Video Solution](#)

45. "Maintenance of personal and public hygiene is necessary for prevention and

control of many infectious diseases." Justify the statement giving suitable examples.



Watch Video Solution

46. Describe the main ideas behind the biological control of pests and diseases.



Watch Video Solution

47. State principle underlying gel electrophoresis. Mention two applications of

this technique in biotechnology.



Watch Video Solution

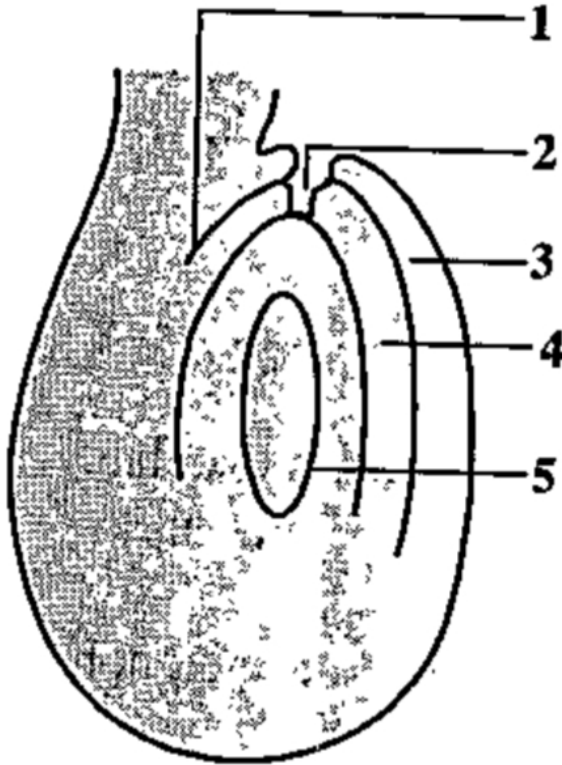
48. List advantages of recombinant insulin.



Watch Video Solution

49. Consider the parts labelled in 1, 2, 3, 4 and 5 respectively in the following diagram of anatropous ovule and find out the correct

sequences.



[Watch Video Solution](#)

50. Ovulation occurs under the influence of

A. a.follicle stimulating hormone

B. b. luteinising hormone

C. c. progesterone

D. d.estrogen

Answer:



Watch Video Solution

51. Observe the set of four figures A,B,C and D and answer the following questions. Which one of the figure shows mutualism?

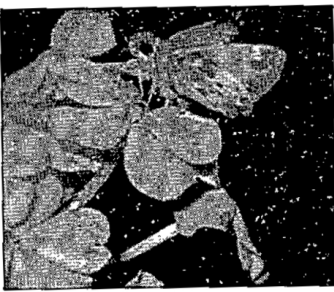


Fig. (A)

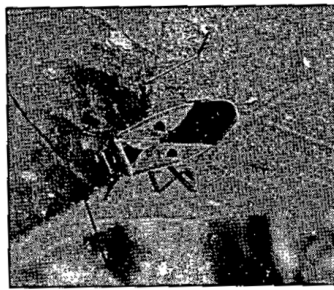


Fig. (B)



Fig. (C)



Fig. (D)



Watch Video Solution

52. Observe the set of four figures A,B,C and D and answer the following questions. What kind of association is shown in D?

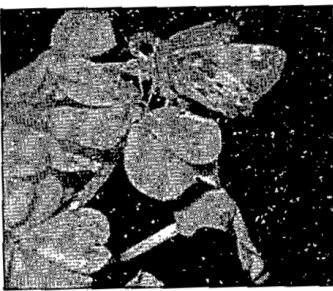


Fig. (A)

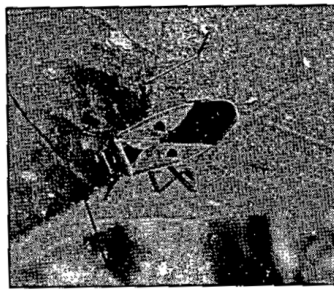


Fig. (B)



Fig. (C)



Fig. (D)



Watch Video Solution

53. Observe the set of four figures A,B,C and D and answer the following questions. Name the organisms and their association in C.

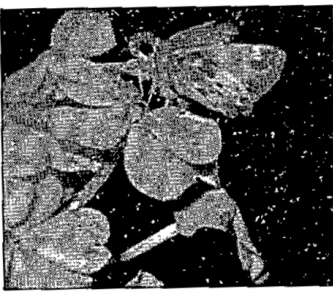


Fig. (A)

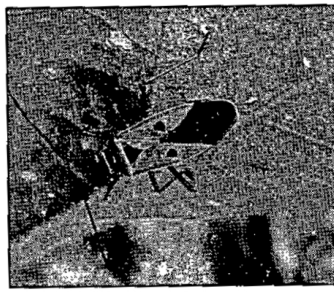


Fig. (B)



Fig. (C)



Fig. (D)



Watch Video Solution

54. Observe the set of four figures A,B,C and D and answer the following questions. what role is the insect performing in B?

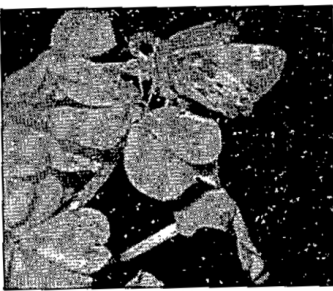


Fig. (A)

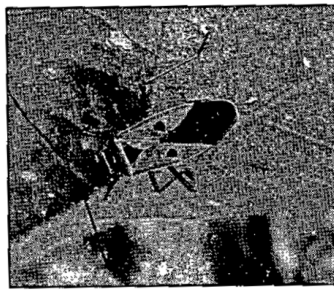


Fig. (B)



Fig. (C)

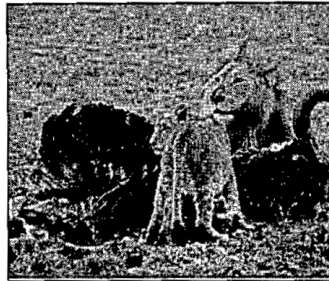


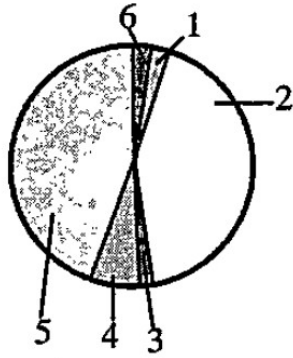
Fig. (D)



Watch Video Solution

55. (Consider the parts labelled 1, 2, 3 and 4, 5, 6 respectively representing global biodiversity of plants in the following diagram and find out

the correct sequence :)



Watch Video Solution