



BIOLOGY

BOOKS - MBD

Set 1

Example

1. Which one of the following parts of the plant when put into the soil is likely to produce new offspring?

- A. Part of an internode
- B. A stem cutting with a node
- C. Part of a primary root
- D. A flower

Answer:



Watch Video Solution

2. In a bacterium when RNA-polymerase binds to the promoter on a transcription unit during transcription, it

- A. terminates the process
- B. helps remove the introns
- C. Inactivates the exons
- D. Initiates the process

Answer:



Watch Video Solution

3. The hypothesis that "Life originated from pre-existing non-living organic molecules" was proposed by

A. Oparin and Haldane

B. Louis Pasteur

C. S.L. Milier

D. Hugo de Vries

Answer:



Watch Video Solution

4. Mating of a superior male of a breed to a female of another breed is called

A. in breeding

B. out crossing

C. out breeding

D. Cross breeding

Answer:



Watch Video Solution

5. Large -holes in 'Swiss -Cheese' are due to

propionibacterium shermanii

Saccharomyes cervisae

Penicillium chrysogenum

Acetobacter aceti.

A. propionibacterium shermanii

B. Saccharomyes cervisae

C. Penicillium chrysogenum

D. Acetobacter aceti.

Answer:



Watch Video Solution

6. Increased concentration of DDT in fish - eating birds is due to

eutrophication

bio-magnification

cultural eutrophication

accelerated eutrophication

A. eutrophication

B. bio-magnification

C. cultural eutrophication

D. accelerated eutrophication

Answer:



Watch Video Solution

7. Species -Area relationship is represented on a log scale as

- A. hyperbola
- B. rectangular hyperbola
- C. linear
- D. inverted

Answer:



Watch Video Solution

8. State two advantages of an apomictic seed to a farmer.



Watch Video Solution

9. Explain when is a genetic code said to be Degenerate



 [Watch Video Solution](#)

10. Explain when is a genetic code said to be Universal

 [Watch Video Solution](#)

11. Differentiate between opioids and cannabinoids on the basis of their specific receptor site in human body.

 [Watch Video Solution](#)

12. Differentiate between opioids and cannabinoids on the basis of their

Mode of action in human body.



Watch Video Solution

13. Name the two technique employed to meet the increasasing demand of fish in the world.



Watch Video Solution

14. Name any two freshwater fishes.



Watch Video Solution

15. Describe the contributions of Alexander Fkeming, Ernest Chain and Howard Florey in the field of microbiology.



Watch Video Solution

16. All cloning vectors do have a 'selectable marker'. Describe its role in recombinant DNA-technology.



Watch Video Solution

17. Mention how have plants developed mechanical and chemical defence against herbivores to protect themselves with the help of one example of each.



Watch Video Solution

18. Name and explain the processes earthworm and bacteria carry on detritus.



Watch Video Solution

19. Explain three different modes of pollination that can occur in chasmogamous flower.



Watch Video Solution

20. Explain the formation of placenta after implantation in a human female.



Watch Video Solution

21. State Mendel's law of dominance. How did he deduce the law? Explain with the help of a suitable example.



Watch Video Solution

22. What are 'SNPs'? Where are they located in a human cell? State any two ways the discovery of SNPs can be of importance to humans.



Watch Video Solution

23. State what the study of fossils indicates.



Watch Video Solution

24. Rearrange the following group of plants according to their evolution from Palaeozoic to Cenozoic periods: Rhynia, Arborescent Lycopods, Conifers, dicotylendon.



[Watch Video Solution](#)

25. Explain the mode of action of Cu^{++} releasing IUDs as a good contraceptive. How is hormone relasing IUD different from it?



[Watch Video Solution](#)

26. Why is 'Saheli' a preferred contra-ceptive by women (any two reasons)?



Watch Video Solution

27. Explain why beehives are set up on the farms for some of our crop species. Name any two such crop species.



Watch Video Solution

28. List any three important steps to be kept in mind for successful beekeeping.



Watch Video Solution

29. Why GMOs are called? List the different ways in which GMO plants have benefitted and have become useful to humans.



Watch Video Solution

30. Differentiate between "Pioneer-species", "climax -community" and "Seres".



Watch Video Solution

31. Explain any three ways-other than zoological parks, botanical gardens and wildlife safaries - by which threatened species of plants and animals are being conserved ex-situ.



Watch Video Solution

32. Explain 'Integrated organic' farming as successfully practised by Ramesh C. Fagar, a farmer in Sonapat (Haryana).



Watch Video Solution

33. What is the utility of carotenoids to plants?



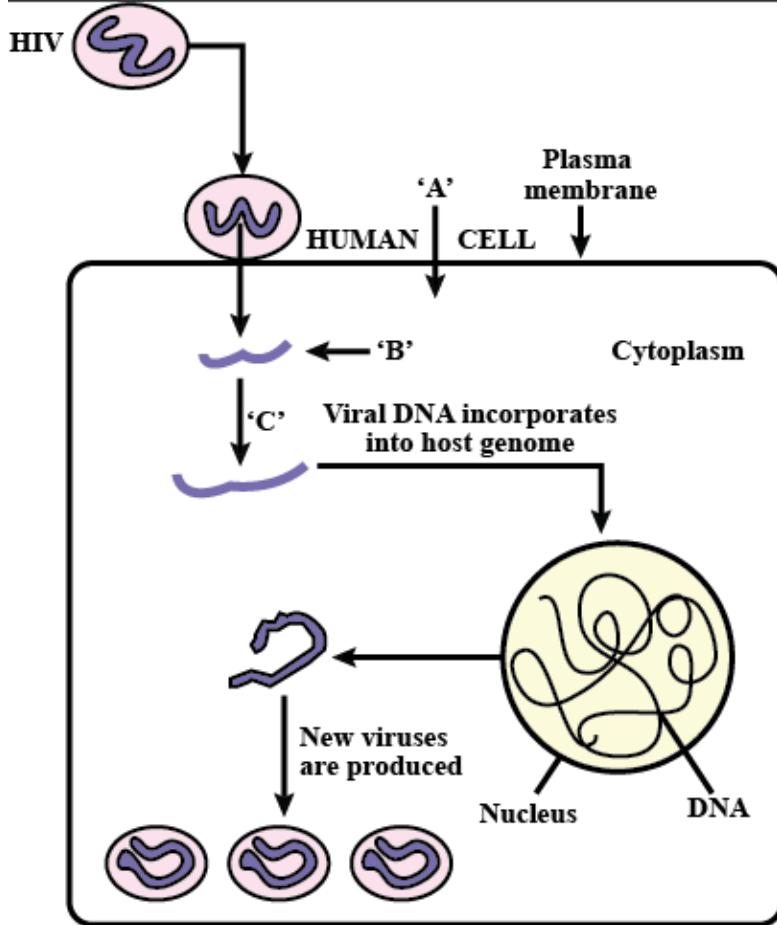
Watch Video Solution

34. Explain IVF and ET?



Watch Video Solution

35. Study the diagram showing the entry of HIV into the human body and the processes that are followed:



Identify enzyme 'C'.



[Watch Video Solution](#)

36. Following a road accident four injured persons were brought to a nearby clinic. The doctor immediately injected them with tetanus antitoxin.

What is tetanus antitoxin?



Watch Video Solution

37. Following a road accident four injured persons were brought to a nearby clinic. The doctor immediately injected them with

tetanus antitoxin.

Why were the injured immediately injected them with tetanus antitoxin.



[Watch Video Solution](#)

38. Following a road accident four injured persons were brought to a nearby clinic. The doctor immediately injected them with tetanus antitoxin.

What is tetanus antitoxin?



[Watch Video Solution](#)

39. "The population of a metro city experiences fluctuations in its population density over a period of time."

When does the population in a metro city tend to increase?



Watch Video Solution

40. "The population of a metro city experiences fluctuations in its population density over a period of time."

When does the population in metro city tend to decline?



[Watch Video Solution](#)

41. "The population of a metro city experiences fluctuations in its population density over a period of time."

If ' N ' is the population density at the time ' t ', write the population density at the time ' $t+1$ '.



[Watch Video Solution](#)

42. Describe the process of megasporogenesis, in an angiosperm.



Watch Video Solution

43. Draw a diagram of a mature embryo sac of an angiosperm, label its any six parts.



Watch Video Solution

44. Where and how in the testes process of spermatogenesis occurs in humans.



Watch Video Solution

45. Draw diagram of human sperm and label four parts.



Watch Video Solution

46. Why did T.H.Morgan select *Drosophila melanogaster* for his experiments?



Watch Video Solution

47. How did he disprove Mendelian dihybrid F_2 phenotypic ratio of 9: 3: 3: 1? Explain giving reasons.



Watch Video Solution

48. List any four major goals of Human Genome project.



Watch Video Solution

49. Write any four ways by which the knowledge from HGP is of significance for humans.



Watch Video Solution

50. Expand BAC and mention its important.



Watch Video Solution

51. Name the insect that attacks cotton crops and causes lot of damage to the crop. How has Bt cotton plants overcome this problem and saved the crop? Explain.



Watch Video Solution

52. Write the role of gene Cry lab.



Watch Video Solution

53. Explain the different steps carried out in Polymerase Chain Reaction, and the specific roles of the enzymes used.



Watch Video Solution

54. Mention application of PCR in the field of
Biotechnology



Watch Video Solution

55. Mention application of PCR in the field of
Diagnostics



Watch Video Solution