



## BIOLOGY

### BOOKS - SARAS PUBLICATION

#### Principles of Ecology

##### Example

1. What is Albedo effect and write their effects?

 [Watch Video Solution](#)

2. What is vivipary? Name a plant group which exhibits vivipary.

 [Watch Video Solution](#)

3. What are ecological equivalents ? Give one example.

 [Watch Video Solution](#)

4. Define mutualism.

 [Watch Video Solution](#)

5. Define obligate mutualism.

 [Watch Video Solution](#)

6. What is thermal stratification? Mention their types.

 [Watch Video Solution](#)

7. What is myrmecophily?



[Watch Video Solution](#)

8. What is seed ball?



[Watch Video Solution](#)

9. Explain parasitism with an example.



[Watch Video Solution](#)

10. Define hydrophytes.



[Watch Video Solution](#)

11. Define zoochory.



[Watch Video Solution](#)

**12.** Define (a) Autecology (b) Synecology.

 [Watch Video Solution](#)

**13.** Define (a) Autecology (b) Synecology.

 [Watch Video Solution](#)

**14.** What is anemometer?

 [Watch Video Solution](#)

**15.** What are Holoparasites?

 [Watch Video Solution](#)

**16.** What are called partial parasites?



[Watch Video Solution](#)

17. What is co-evolution?



[Watch Video Solution](#)

18. What are xerophytes?



[Watch Video Solution](#)

19. What are epiphytes? List the morphological adaptations seen in epiphytes.



[Watch Video Solution](#)

20. what are halophytes?



[Watch Video Solution](#)

21. What is mimicry?

 [Watch Video Solution](#)

22. What are hygrophytes?

 [Watch Video Solution](#)

23. Define hydrochory.

 [Watch Video Solution](#)

24. Define the term habitat.

 [Watch Video Solution](#)

25. Define capillary water.

 [Watch Video Solution](#)

26. Define ecotone with an example.

 [Watch Video Solution](#)

27. Define edge effect with an example.

 [Watch Video Solution](#)

28. Explain Commensalism with an example.

 [Watch Video Solution](#)

29. What is positive interaction?



[Watch Video Solution](#)

30. Define competition.



[Watch Video Solution](#)

31. What is proto cooperation?



[Watch Video Solution](#)

32. Define inter specific competition.



[Watch Video Solution](#)

33. Define free floating hydrophytes.



[Watch Video Solution](#)



**34.** Define submerged floating hydrophytes.



**Watch Video Solution**

**35.** Define rooted submerged hydrophytes.



**Watch Video Solution**

**36.** Define amphibious hydrophytes.



**Watch Video Solution**

**37.** What are Tropophytes?



**Watch Video Solution**

**38.** Define the term ecotope.



[Watch Video Solution](#)

39. Define pedology.



[Watch Video Solution](#)

40. Define altitude.



[Watch Video Solution](#)

41. What is Timberline/ Tree line?



[Watch Video Solution](#)

42. Define lianes.



[Watch Video Solution](#)

43. Define biome.

 [Watch Video Solution](#)

44. Define biosphere.

 [Watch Video Solution](#)

45. Define cladode and give an example.

 [Watch Video Solution](#)

46. Define palaeoclimatology and its use.

 [Watch Video Solution](#)

47. Define ecological factors.



[Watch Video Solution](#)

48. What are insectivorous plants?



[Watch Video Solution](#)

49. Distinguish habitat and niche.



[Watch Video Solution](#)

50. How is anemochory differ from zoochory?



[Watch Video Solution](#)

51. Distinguish the organisms based on the range of tolerance of salinity.



[Watch Video Solution](#)

52. Differentiate Autecology and Synecology.

 [Watch Video Solution](#)

53. Define ecology.

 [Watch Video Solution](#)

54. What is ecological hierarchy? Name the levels of ecological hierarchy.

 [Watch Video Solution](#)

55. Distinguish habitat and niche.

 [Watch Video Solution](#)

**56.** Why are some organisms called as eurythermals and some others as stenothermals ?

 [Watch Video Solution](#)

**57.** 'Green algae are not likely to be found in the deepest strata of the ocean'. Give at least one reason.

 [Watch Video Solution](#)

**58.** What is Phytoremediation?

 [Watch Video Solution](#)

**59.** What is Albedo effect and write their effects?

 [Watch Video Solution](#)

**60.** Sandy soil is not suitable for cultivation. Explain why?

 [Watch Video Solution](#)

**61.** List any two adaptive features evolved in parasites enabling them to live successfully on their host?

 [Watch Video Solution](#)

**62.** Rhytidome acts as a structural defence by plants against fire - Comment.

 [Watch Video Solution](#)

**63.** What is vivipary? Name a plant group which exhibits vivipary.

 [Watch Video Solution](#)

64. What are ecological equivalents? Give one example.

 [Watch Video Solution](#)

65. The organic horizon is generally absent from agriculture soils because tilling e.g. plowing, buries organic matter. Why is an organic horizon generally absent in desert soils?

 [Watch Video Solution](#)

66. Soil formation can be initiated by biological organisms. Explain how?

 [Watch Video Solution](#)

67. Describe the mutual relationship between the fig and wasp and comment on the phenomenon that operates in this relationship.

 [Watch Video Solution](#)



68. Lichen is considered as a good example of obligate mutualism.

Explain.



[Watch Video Solution](#)

69. Mention any two significant roles of predation plays in nature.



[Watch Video Solution](#)

70. Why do submerged plants receive weak illumination than exposed floating plants in a lake?



[Watch Video Solution](#)

71. What is thermal stratification? Mention their types.



[Watch Video Solution](#)

72. What is co-evolution?



[Watch Video Solution](#)

73. List out the effects of fire to plants.



[Watch Video Solution](#)

74. What is mutualism? Mention any two examples where the organisms involved are commercially exploited in modern agriculture.



[Watch Video Solution](#)

75. How does an orchid ophrys ensures its pollination by bees?



[Watch Video Solution](#)

76. Water is very essential for life. Write any three features for plants which enable them to survive in water scarce environment.

 [Watch Video Solution](#)

77. What is myrmecophily?

 [Watch Video Solution](#)

78. What is seed ball?

 [Watch Video Solution](#)

79. How is anemochory differ from zoochory?

 [Watch Video Solution](#)

**80.** Explain Raunkiaer classification in the world's vegetation based on the temperature.

 [Watch Video Solution](#)

**81.** What is soil profile? Explain the characters of different soil horizons.

 [Watch Video Solution](#)

**82.** Give an account of various types of parasitism with examples.

 [Watch Video Solution](#)

**83.** Give an account on holoparasite with examples.

 [Watch Video Solution](#)

**84.** Enumerate the anatomical adaptations of xerophytes.

 [Watch Video Solution](#)

**85.** List out any five morphological adaptations of halophytes.

 [Watch Video Solution](#)

**86.** What are the advantages of seed dispersal?

 [Watch Video Solution](#)

**87.** Describe dispersal of fruit and seeds by animals.

 [Watch Video Solution](#)

88. Match the pair and the common names of the insectivorous plants.

Insectivorous plant	Common name
1. <i>Nepenthes</i>	a. Bladder wort
2. <i>Utricularia</i>	b. Venus fly trap
3. <i>Drosera</i>	c. Pitcher plant
4. <i>Dionaea</i>	d. Sun dew plant



Watch Video Solution

89. Match the pair and the type of vegetation with the soil they live in.

Vegetation types	Soil type/ habitat
1. Cryptophytes	a. Rocky surface
2. Chasmophytes	b. Below the soil surface
3. Psammophytes	c. Saline soil
4. Lithophytes	d. Rocky crevices
5. Halophytes	e. Sandy soil



Watch Video Solution

90. Match the important days with the dates.

Date	Ecological days
1. May 22	a. Earth day
2. June 5	b. International ozone day
3. March 21	c. Van Mahotsav day
4. July 7	d. World environment day
5. September 16	e. World bio diversity day
6. April 22	f. World forest day



Watch Video Solution

91. Match the terms to their tolerance to environmental factors.

Terminology	Environmental factors
1. Stenothermal	a. Salinity
2. Stenohaline	b. Food
3. Stenoecious	c. Water
4. Stenohydric	d. Habitat selection
5. Stenophagic	e. Temperature



Watch Video Solution

92. Match the composition of gases in the atmosphere.

Gas	Percentage in the atmosphere
1. Nitrogen	a. 21%
2. Oxygen	b. 78%
3. Carbon dioxide	c. 0.93%
4. Argon and other gases	d. 0.03%



Watch Video Solution

93. Match the types of hydrophytes with their examples.

Types of Hydrophytes	Examples
1. Rooted floating	a. <i>Pistia</i>
2. Submerged floating	b. <i>Hydrilla</i>
3. Free floating	c. <i>Ceratophyllum</i>
4. Amphibious	d. <i>Nelumbo</i>
5. Rooted submerged	e. <i>Typha</i>



Watch Video Solution



94. Match the types of soil with the relative proportion of soil particles.

Soil type	Relative proportion
1. Silt soil	a. 50% clay and 50% silt
2. Sandy soil	b. 70% sand and 30% clay/ silt or both
3. Clayey soil	c. 90 %silt and 10% sand
4. Loamy soil	d. 85% sand and 15% clay

 [Watch Video Solution](#)

95. Define Autecology.

 [Watch Video Solution](#)

96. Define synecology.

 [Watch Video Solution](#)

**97.** What is anemometer?



**Watch Video Solution**

**98.** What are biotic factors?



**Watch Video Solution**

**99.** How the climate of an area is determined?



**Watch Video Solution**

**100.** Explain parasitism with an example.



**Watch Video Solution**

**101.** What are Holoparasites?





[Watch Video Solution](#)

**102.** What are called partial parasites?



[Watch Video Solution](#)

**103.** What is co-evolution?



[Watch Video Solution](#)

**104.** What are xerophytes?



[Watch Video Solution](#)

**105.** What are epiphytes? Explain their characteristic features.



[Watch Video Solution](#)

**106.** Where the salt secreting glands are found?

 [Watch Video Solution](#)

**107.** What is seed and fruit dispersal?

 [Watch Video Solution](#)

**108.** what are halophytes?

 [Watch Video Solution](#)

**109.** What are Psammophytes?

 [Watch Video Solution](#)

**110.** What are called lithophytes?



 [Watch Video Solution](#)

**111.** What are called cryptophytes?

 [Watch Video Solution](#)

**112.** Define :

Cryptophytes

 [Watch Video Solution](#)

**113.** Define :

Calciphytes

 [Watch Video Solution](#)

**114.** What is mimicry?

 [Watch Video Solution](#)

**115.** What is myrmecophily?

 [Watch Video Solution](#)

**116.** What are hygrophytes?

 [Watch Video Solution](#)

**117.** Define zoochory.

 [Watch Video Solution](#)

**118.** Define hydrochory.

 [Watch Video Solution](#)

**119.** What is Autochory?

 [Watch Video Solution](#)

**120.** Name and explain the branches of ecology.

 [Watch Video Solution](#)

**121.** List out the advanced fields of ecology.

 [Watch Video Solution](#)

**122.** Define the term habitat.

 [Watch Video Solution](#)

**123.** What is biotope?

 [Watch Video Solution](#)

124. List the edaphic factors which vegetation affect.

 [Watch Video Solution](#)

125. Define capillary water.

 [Watch Video Solution](#)

126. What is soil profile ?

 [Watch Video Solution](#)

127. What determines the geographical distribution of plants?

 [Watch Video Solution](#)



**128.** Define pore spaces.



**Watch Video Solution**

**129.** What are soil organisms?



**Watch Video Solution**

**130.** List the types of water available to the plants?



**Watch Video Solution**

**131.** What is topography? Write the chief topographic factors.



**Watch Video Solution**

**132.** What are epiphytes? List the morphological adaptations seen in epiphytes.

 [Watch Video Solution](#)

**133.** What is topography? Write the chief topographic factors.

 [Watch Video Solution](#)

**134.** What are the effects of topographic factors?

 [Watch Video Solution](#)

**135.** Define micro climate.

 [Watch Video Solution](#)

**136.** What is latitude?

 [Watch Video Solution](#)

**137.** How does temperature and vegetation vary depending upon the latitude?

 [Watch Video Solution](#)

**138.** List out the factors that cause distinct zonation of vegetation at different altitudes.

 [Watch Video Solution](#)

**139.** Differentiate loamy and sandy soil.

 [Watch Video Solution](#)

**140.** Why does a pond possess different species of organisms in the different parts?

 [Watch Video Solution](#)

**141.** Define ecotone with an example.

 [Watch Video Solution](#)

**142.** Define edge effect with an example.

 [Watch Video Solution](#)

**143.** What is Spanish moss?

 [Watch Video Solution](#)

**144.** What is meant by commensalism?

 [Watch Video Solution](#)

**145.** Differentiate windward region and leeward region.

 [Watch Video Solution](#)

**146.** Write about the physiological adaptations of hydrophytes.

 [Watch Video Solution](#)

**147.** Write about the morphological adaptations seen in the roots of mesophytes.

 [Watch Video Solution](#)

**148.** Write about the morphological adaptations seen in the shoot of mesophytes.

 [Watch Video Solution](#)

**149.** What is positive interaction?

 [Watch Video Solution](#)

**150.** What is negative interaction?

 [Watch Video Solution](#)

**151.** Define mutualism.

 [Watch Video Solution](#)

**152.** Define competition.



**Watch Video Solution**

**153.** Write the types of competition.



**Watch Video Solution**

**154.** Define intra specific competition.



**Watch Video Solution**

**155.** What is protooperation?



**Watch Video Solution**

**156.** Why is it told that the intraspecific competition is severe?



[Watch Video Solution](#)

**157.** Define inter specific competition.



[Watch Video Solution](#)

**158.** Define adaptations and its importance.



[Watch Video Solution](#)

**159.** Classify plants based on habitat.



[Watch Video Solution](#)

**160.** Define free floating hydophytes.



[Watch Video Solution](#)



**161.** Define rooted floating hydrophytes.



**Watch Video Solution**

**162.** Define submerged floating hydrophytes.



**Watch Video Solution**

**163.** Define rooted submerged hydrophytes.



**Watch Video Solution**

**164.** Define amphibious hydrophytes.



**Watch Video Solution**

**165.** What are Tropophytes?



[Watch Video Solution](#)

**166.** What type of seed dispersal is seen in Poppy. Discuss.



[Watch Video Solution](#)

**167.** How water is classified based on its salinity?



[Watch Video Solution](#)

**168.** Define the term ecotope.



[Watch Video Solution](#)

**169.** How is water available to plants in nature?



[Watch Video Solution](#)

**170.** What is the role of water on organisms?

 [Watch Video Solution](#)

**171.** Define applied ecology. List its uses.

 [Watch Video Solution](#)

**172.** Define applied ecology. List its uses.

 [Watch Video Solution](#)

**173.** Name the types of ecological factors.

 [Watch Video Solution](#)

**174.** Name the climatic factors that affect plant life.



[Watch Video Solution](#)

175. What are "indicators of fire"?



[Watch Video Solution](#)

176. What is a fire break?



[Watch Video Solution](#)

177. What is natural fire break?



[Watch Video Solution](#)

178. What are edaphic factors?



[Watch Video Solution](#)

**179.** How does soil originate?

 [Watch Video Solution](#)

**180.** What are the different types of soil based on the soil formation?

 [Watch Video Solution](#)

**181.** Define pedology.

 [Watch Video Solution](#)

**182.** What is soil?

 [Watch Video Solution](#)

**183.** Define altitude.



[Watch Video Solution](#)

**184.** What is Timberline/ Tree line?



[Watch Video Solution](#)

**185.** Define lianes.



[Watch Video Solution](#)

**186.** Define biome.



[Watch Video Solution](#)

**187.** Define biosphere.



[Watch Video Solution](#)

**188.** Define population and community.

 [Watch Video Solution](#)

**189.** Define landscape.

 [Watch Video Solution](#)

**190.** Define population.

 [Watch Video Solution](#)

**191.** Define ecological niche.

 [Watch Video Solution](#)

**192.** Write about the physiological adaptations seen in mesophytes.



[Watch Video Solution](#)

**193.** Classify the forests based on rainfall.



[Watch Video Solution](#)

**194.** Distinguish the organisms based on the range of tolerance of salinity.



[Watch Video Solution](#)

**195.** Write short notes on (d) Visible light



[Watch Video Solution](#)

**196.** How are the plants classified based on the tolerance to intensities of light?





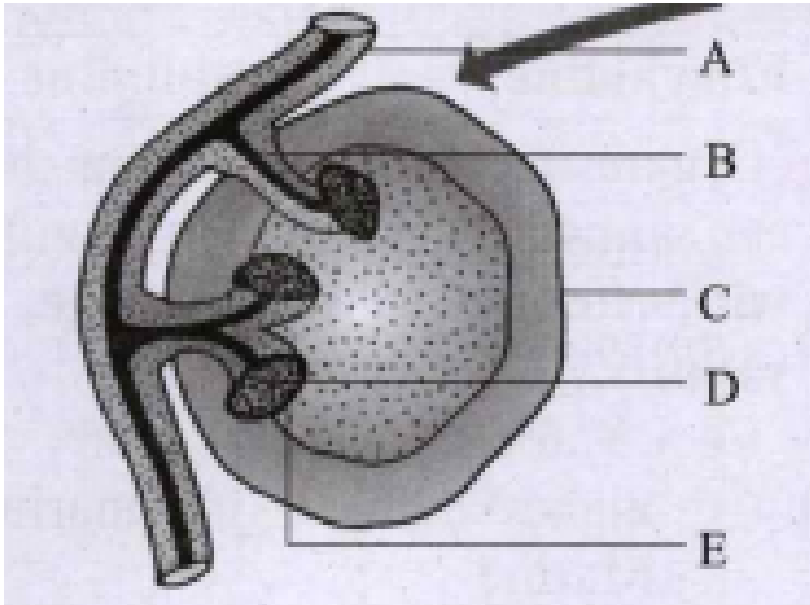
Watch Video Solution

197. Differentiate heliophytes and sciophytes.



Watch Video Solution

198. Identify the alphabets labelled for haustoria.



Watch Video Solution

**199.** Name the types of ecological factors.



**Watch Video Solution**

**200.** Which of the plant seed show highest longevity in plant kingdom?



**Watch Video Solution**

**201.** Define cladode and give an example.



**Watch Video Solution**

**202.** Write the common names of the following.

Drosera



**Watch Video Solution**

**203.** Write the common names of the following.

Nepenthes

 [Watch Video Solution](#)

**204.** Write the common names of the following.

Dionaea

 [Watch Video Solution](#)

**205.** Write the common names of the following.

Utricularia

 [Watch Video Solution](#)

**206.** Write a note on soil temperature.

 [Watch Video Solution](#)

**207.** List out the physiological adaptations of xerophytes.

 [Watch Video Solution](#)

**208.** What is ecological hierarchy?

Name the levels of ecological hierarchy.

 [Watch Video Solution](#)

**209.** Draw the diagram showing altitudinal zonation of vegetation.

 [Watch Video Solution](#)

**210.** Write any two example for ecological equivalents.

 [Watch Video Solution](#)

**211.** What is known as tree line of a mountain?

 [Watch Video Solution](#)

**212.** Differentiate species ecology from community ecology.

 [Watch Video Solution](#)

**213.** Differentiate Autecology and Synecology.

 [Watch Video Solution](#)

**214.** List the anatomical adaptations of Halophytes.

 [Watch Video Solution](#)

**215.** Classify the soil based on the relative proportion of soil particles.



[Watch Video Solution](#)

**216.** On what ecological factor basis is distribution of vegetation classified? What are the types?



[Watch Video Solution](#)

**217.** What are the different limits of temperature recognised for any organism?



[Watch Video Solution](#)

**218.** How does altitude cause zonation of vegetation?



[Watch Video Solution](#)

**219.** List out the components that disturb the temperature level of a region.

 [Watch Video Solution](#)

**220.** Give some example of tolerance to toxicity

 [Watch Video Solution](#)

**221.** What is fire?

 [Watch Video Solution](#)

**222.** How is fire classified?

 [Watch Video Solution](#)

**223.** What are the effects of temperature on the physiological processes?



**Watch Video Solution**

**224.** Why does the north and south faces of a mountain or hill possess different types of flora and fauna?



**Watch Video Solution**

**225.** Name few abiotic factors that influence organisms in an environment



**Watch Video Solution**

**226.** Differentiate the characteristics of plains and the hills.



**Watch Video Solution**



**227.** What are the benefits of defense mechanism? Give some examples.

 [Watch Video Solution](#)

**228.** What are insectivorous plants?

 [Watch Video Solution](#)

**229.** In *Ranunculus* a distinct feature of leaves of found. Generalise it.

 [Watch Video Solution](#)

**230.** Point out any two morphological adaptations noticed in the roots of hydrophytes.

 [Watch Video Solution](#)

**231.** List out the anatomical adaptations seen in mesophytes.

 [Watch Video Solution](#)

**232.** Define palaeoclimatology and its use.

 [Watch Video Solution](#)

**233.** Define hydrophytes.

 [Watch Video Solution](#)

**234.** What are the functions of environmental management?

 [Watch Video Solution](#)

**235.** Define ecological factors.



[Watch Video Solution](#)

**236.** (I) Light is basic need of physiological processes of plants.

(II) The visible part of light is made-up of wavelength from about 500 nm (violet) to 600 nm (red).

(III) The rate of photosynthesis is maximum at blue (400 - 500 nm) and green 600 nm.

(IV) The green (500 - 600 nm) wave length of spectrum is less strongly absorbed by plants.



[Watch Video Solution](#)

**237.** How is organism affected by temperature?



[Watch Video Solution](#)

**238.** Describe two different types of xerophytic habitat.



 [Watch Video Solution](#)

**239.** Draw and label the internal structure of Nerium leaf.

 [Watch Video Solution](#)

**240.** What are breathing roots? Give examples.

 [Watch Video Solution](#)

**241.** Name and Explain the interaction type which has (-), (0) combination.

 [Watch Video Solution](#)

**242.** What is mimicry?

 [Watch Video Solution](#)

**243.** Write about the morphological adaptations in stems of hydrophytes.

 [Watch Video Solution](#)

**244.** Write about the morphological adaptations in the leaves of hydrophytes.

 [Watch Video Solution](#)

**245.** Write a short note on anatomical adaptations of hydrophytes.

 [Watch Video Solution](#)

**246.** How do seeds disperse by water?

 [Watch Video Solution](#)

**247.** What is Autochory?

 [Watch Video Solution](#)

**248.** Write a note on wind.

 [Watch Video Solution](#)

**249.** What are the beneficial and harmful effects of wind?

 [Watch Video Solution](#)

**250.** Vanda uses the host plant only for the support and does not harm it'. Justify the statement.

 [Watch Video Solution](#)

**251.** Explain the three types of xerophytes. Give examples and diagram for each.

 [Watch Video Solution](#)

**252.** Tabulate the biological interaction of biotic factors.

 [Watch Video Solution](#)

## Exercise

**1.** Read the given statements and select the correct option.

- (i) Hydrophytes possess aerenchyma to support themselves in water.
- (ii) Seeds of *Viscum* are positively photoblastic as they germinate only in presence of light.
- (iii) Hygroscopic water is the only soil water available to roots of plant growing in soil as it is present inside the micropores.

(iv) High temperature reduces use of water and solute absorption by roots.

A. I,ii and iii only

B. ii,iii and iv

C. ii and iii only

D. I and ii only

**Answer:**



**Watch Video Solution**

2. Which of the given plant produces cardiac glycosides?

A. Calotropis

B. Acacia

C. Nepenthes

D. Utricularia



**Answer:**



**Watch Video Solution**

**3. Pedogenesis refers to**

- A. Fossils
- B. Water
- C. Population
- D. Soil

**Answer:**



**Watch Video Solution**

**4. The horizon of the soil profile above which understand water is found.**

- A. C-Horizon

B. A-Horizon

C. R-Horizon

D. B-Horizon

**Answer:**

 [Watch Video Solution](#)

5. What is Albedo effect and write their effects?

 [Watch Video Solution](#)

6. Rhytidome acts as a structural defence by plants against fire -  
Comment.

 [Watch Video Solution](#)

7. What is vivipary? Name a plant group which exhibits vivipary.

 [Watch Video Solution](#)

8. What is vivipary? Name a plant group which exhibits vivipary.

 [Watch Video Solution](#)

9. Green algae are not likely to be found in the deepest strata of the ocean'. Give at least one reason.

 [Watch Video Solution](#)

10. How does soil originate?

 [Watch Video Solution](#)

11. What type of seed dispersal is seen in Poppy. Discuss.

 [Watch Video Solution](#)

12. The organic horizon is generally absent from agriculture soils because tilling e.g. plowing, buries organic matter. Why is an organic horizon generally absent in desert soils?

 [Watch Video Solution](#)

13. Why do submerged plants receive weak illumination than exposed floating plants in a lake?

 [Watch Video Solution](#)

14. What is thermal stratification? Mention their types.

 [Watch Video Solution](#)

15. Vanda uses the host plant only for the support and does not harm it'.

Justify the statement.

 [Watch Video Solution](#)

16. In Ranunculus a distinct feature of leaves of found. Generalise it.

 [Watch Video Solution](#)

17. Why are some organisms called as eurythermals and some others as stenothermals ?

 [Watch Video Solution](#)

18. What is soil profile? Explain the characters of different soil horizons.

 [Watch Video Solution](#)

19. Arrange the correct sequence of ecological hierarchy starting from lower to higher level.

A.

*Individual organism → Population → Landscape → Ecosystem*

B. *Landscape → Ecosystem → Biome → Biosphere*

C. *Community → Ecosystem → Landscape → Biome*

D. *Population → Organism → Biome → Landscape*

**Answer:**



[Watch Video Solution](#)

20. Ecology is the study of an individual species is called

Community ecology

Autecology

Species ecology

Synecology

A. I only

B. ii only

C. I and iv only

D. ii and iii only

**Answer:**



**Watch Video Solution**

**21.** A specific place in an ecosystem, where an organism lives and performs its functions is

A. Habitat

B. Niche

C. Landscape

## D. Biome

**Answer:**



[Watch Video Solution](#)

**22.** Read the given statements and select the correct option.

- (i) Hydrophytes possess aerenchyma to support themselves in water.
- (ii) Seeds of *Viscum* are positively photoblastic as they germinate only in presence of light.
- (iii) Hygroscopic water is the only soil water available to roots of plant growing in soil as it is present inside the micropores.
- (iv) High temperature reduces use of water and solute absorption by roots.

A. I, ii and iii only

B. ii, iii and iv

C. ii and iii only



D. I and ii only

**Answer:**



[Watch Video Solution](#)

**23.** Which of the given plant produces cardiac glycosides?

A. Calotropis

B. Acacia

C. Nepenthes

D. Utricularia

**Answer:**



[Watch Video Solution](#)

**24.** Read the given statements and select the correct option.

(i) Loamy soil is best suited for plant growth as it contains a mixture of silt, sand and clay.

(ii) The process of humification is slow in case of organic remains containing a large amount of lignin and cellulose.

(iii) Capillary water is the only water available to plant roots as it is present inside the micropores.

(iv) Leaves of shade plant have more total chlorophyll per reaction centre, low ratio of chl a and chl b are usually thinner leaves.

A. I, ii and iii only

B. ii, iii and iv only

C. I, ii and iv only

D. ii and iii only

**Answer:**



**Watch Video Solution**

25. Read the given statements and select the correct option.

Statement A : Cattle do not graze on weeds of Calotropis.

Statement B : Calotropis have thorns and spines, as defense against herbivores.

- A. Both statements A and B are incorrect.
- B. Statement A is correct but statement B is incorrect.
- C. Both statements A and B are correct but statement B is not the correct explanation of statement A.
- D. Both statements A and B are correct and statement B is the correct explanation of statement A.

**Answer:**



**Watch Video Solution**

26. In soil water available for plants is

- A. Gravitational water
- B. Chemically bound water
- C. Capillary water
- D. Hygroscopic water

**Answer:**



[Watch Video Solution](#)

27. Read the following statements and fill up the blanks with correct option.

- (i) Total soil water content in soil is called \_\_\_\_
- (ii) Soil water not available to plants is called. \_\_\_\_
- (iii) Soil water available to plants is called. \_\_\_\_

- A. Holard, Echard, Chresard, Holard
- B. Echard, Holard, Echard, Chresard
- C. Chresard, Chresard, Holard, Echard

D.

**Answer:**



**Watch Video Solution**

**28.** Column I represent the size of the soil particles and Column II represents type of soil components. Which of the following is correct match for the Column I and II

<b>Column - I</b>	<b>Column - II</b>
I) 0.2 to 2.00 mm	i) Silt soil
II) Less than 0.002 mm	ii) Clayey soil
III) 0.002 to 0.02 mm	iii) Sandy soil
IV) 0.002 to 0.2 mm	iv) Loamy soil

A. I-ii, II-iii, III-iv, IV-I

B. I-iv, II-I, III-iii, IV-ii

C. I-iii, II-ii, III-I, IV-iv

D. None of the above

**Answer:**



[Watch Video Solution](#)

29. The plants of this group are adapted to live partly in water and partly above substratum and free from water

A. Xerophytes

B. Mesophytes

C. Hydrophytes

D. Halophytes

**Answer:**



[Watch Video Solution](#)

30. Identify the A, B, C and D in the given table

Interaction	Effects on species X	Effects on species Y
Mutualism	A	(+)
B	(+)	(-)
Competition	(-)	C
D	(-)	0

- A. (+), Parasitism, (-), Amensalism
- B. (-), Mutualism, (+), Competition
- C. (+), Competition, (0), Mutualism
- D. (0), Amensalism, (+), Parasitism

Answer:



Watch Video Solution

31. Ophrys an orchid resembling the female of an insect so as to able to get pollinated is due to phenomenon of

- A. Myrmecophily
- B. Ecological equivalents
- C. Mimicry
- D. None of these

**Answer:**



[Watch Video Solution](#)

32. A free living nitrogen fixing cyanobacterium which can also form symbiotic association with the water fern Azolla .....

- A. Nostoc
- B. Anabaena
- C. Chlorella



D. Rhizobium

**Answer:**



**Watch Video Solution**

**33.** Pedogenesis refers to

A. Fossils

B. Water

C. Population

D. Soil

**Answer:**



**Watch Video Solution**

**34.** Mycorrhiza promotes plant growth by .....

- A. Serving as a plant growth regulators
- B. Absorbing inorganic ions from soil
- C. Helping the plant in utilizing atmospheric nitrogen
- D. Protecting the plant from infection

**Answer:**



**Watch Video Solution**

**35.** Which of the following plant has a non-succulent xerophytic and thick leathery leaves with waxy coating?

- A. Bryophyllum
- B. Ruscus
- C. Nerium
- D. Calotropis

**Answer:**



[Watch Video Solution](#)

36. In a fresh water environment like pond, rooted autotrophs are

- A. Nymphaea and Typha
- B. Ceratophyllum and Utricularia
- C. Wolffia and Pistia
- D. Azolla and Lemna

**Answer:**



[Watch Video Solution](#)

37. Match the following and choose the correct combination from the options given below:

**Column I  
(Interaction)**

- (I) Mutualism
- (II) Commensalism
- (III) Parasitism
- (IV) Predation
- (V) Amensalism

**Column II  
(Examples)**

- (i) Trichoderma and **Penicillium**
- (ii) Balanophora, **Orobanche**
- (iii) Orchids and Ferns
- (iv) Lichen and **Mycorrhiza**
- (v) **Nepenthes** and **Diaonaea**

- A. I-I, II-ii, III-iii, IV-iv, V-v
- B. I-I, II-iii, III-iv, IV-v, V-I
- C. I-iii, II-iv, III-v, IV-I, V-ii
- D. I-iv, II-iii, III-ii, IV-v, V-I

**Answer:**



**Watch Video Solution**

**38.** Strong, sharp spines that get attached to animal's feet are found in the fruits of

- A. Argemone
- B. Ecballium

C. Heritier

D. Crossandra

**Answer:**



**Watch Video Solution**

**39.** Sticky glands of Boerhaavia and Cleome support

A. Anemochory

B. Zoochory

C. Autochory

D. Hydrochory

**Answer:**



**Watch Video Solution**

40. Father of Ecology \_\_\_\_

- A. Alexander Fleming
- B. Alexander Graham Bell
- C. Alexander von Humboldt
- D. Alexander Norman

**Answer:**



**Watch Video Solution**

41. Eugene P. Odum is the father of.

- A. Ecology
- B. Modern ecology
- C. Indian ecology
- D. Population ecology

**Answer:**



**Watch Video Solution**

**42.** Father of Indian Ecology \_\_\_\_\_

- A. Reiter
- B. Ernst Haeckel
- C. R. Misra
- D. Grinnell

**Answer:**



**Watch Video Solution**

**43.** The basic unit of ecological hierarch is.

- A. Biome

B. Community

C. Population

D. Individual organism

**Answer:**



**Watch Video Solution**

**44.** The environment of any community is called.

A. Ecotope

B. Geotope

C. Biotope

D. Epitope

**Answer:**



**Watch Video Solution**



**45.** Niche means

- A. Physical space occupied by an organism
- B. The interaction of organisms with their environment
- C. A functional space occupied by an organism in the ecosystem
- D. Ecology of an individual species

**Answer:**



**Watch Video Solution**

**46.** The term niche was first used by.

- A. Rosewell Hill Johson
- B. Grinnell
- C. Reiter
- D. R. Misra

**Answer:**



[Watch Video Solution](#)

**47.** Eurythermal and Stenothermal are the terms associated with organisms having.

- A. Heat tolerance
- B. Light tolerance
- C. Shade tolerance
- D. Saline tolerance

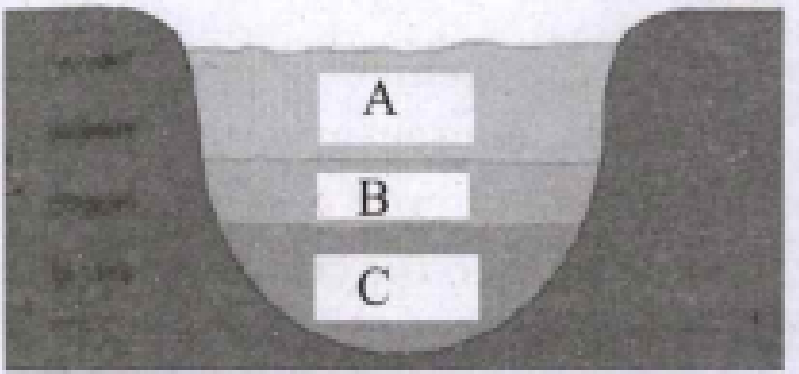
**Answer:**



[Watch Video Solution](#)

**48.** Study the image given below and identify the thermal stratifications

A, B & C



- A. A-Hypolimnion, B-Metalimnion, C-Epilimnion
- B. A-Metalimnion, B-Epilimnion, C-Hypolimnion
- C. A-Epilimnion, B-Hypolimnion, C-Metalimnion
- D. A-Epilimnion, B-Metalimnion, C-Hypolimnion

**Answer:**

[Watch Video Solution](#)

**49.** Identify the plant that does not grow in countries like Canada and Germany.

- A. Guava

B. Strawberry

C. Mango

D. Custard apple

**Answer:**



[Watch Video Solution](#)

**50.** The habitat where we find thermal stratification is.

A. Desert

B. Forest

C. Grassland

D. Aquatic

**Answer:**



[Watch Video Solution](#)

51. The imaginary line on higher areas of land above which the trees do not grow is.

- A. Pith line
- B. Wood line
- C. Timber line
- D. Fibre line

**Answer:**



**Watch Video Solution**

52. The altitudinal limit upto which there is a normal tree growth.

- A. 2000 to 4000m
- B. 3000 to 5000m
- C. 3000 to 4000m

D. 2000 to 5000m

**Answer:**



[Watch Video Solution](#)

**53.** Choose the statement which is correct for spreading diseases in plants.

- A. High temperature with low humidity
- B. High temperature with high humidity
- C. Low humidity with low temperature
- D. Low temperature with high humidity

**Answer:**



[Watch Video Solution](#)

54. What is the percentage of water covering earth?

A. 6%

B. 0.71

C. 0.72

D. 0.7

**Answer:**



**Watch Video Solution**

55. Identify the forest that occurs where there is heavy rainfall.

A. Sclerophyllous forest

B. Coniferous forest

C. Evergreen forest

D. Deciduous forest

**Answer:**



**Watch Video Solution**

**56.** The best pH range of the soil for cultivation of crop plants is

A. 5.5 to 5.8

B. 5.5 to 6.3

C. 5.5 to 6.8

D. 5.3 to 5.5

**Answer:**



**Watch Video Solution**

**57.** Sclerophyllous forests are found where.



- A. Heavy rainfall occurs during winter and mild rainfall during summer.
- B. Heavy rainfall occurs during rainy season and low rainfall during summer.
- C. Low rainfall occurs during summer and low rainfall during winter.
- D. Heavy rainfall occurs during winter and low rainfall during summer.

**Answer:**



**Watch Video Solution**

**58.** Identify the environment factor that is associated with the terms stenobathic and eurybathic.

- A. Temperature
- B. Salinity
- C. Depth of water

D. Food

**Answer:**



**Watch Video Solution**

59. A plant which can tolerate cadmium poisoning \_\_\_\_\_

A. Anabaena and Jowar

B. Azolla and Barley

C. Pistia and Wheat

D. Rice and Eichhornia

**Answer:**



**Watch Video Solution**

60. Instrument to measure speed of wind .....

A. Micrometer

B. Voltmeter

C. Ammeter

D. Anemometer

**Answer:**



**Watch Video Solution**

**61.** Identify the element responsible for acid rain.

A. Cobalt

B. Chlorine

C. Phosphorus

D. Sulphur

**Answer:**



**Watch Video Solution**

62. Identify the statement that is not true for the effects of wind.

- A. Increases the rate of transpiration
- B. Wave formation in lakes and ocean
- C. Does not cause soil erosion
- D. Important factor for the formation of rain

**Answer:**



[Watch Video Solution](#)

63. Pyrophilous is the term associated to.

- A. Plants that grow in soil with high pH
- B. Fungi that grow on logs
- C. Fungi that grow in soil of burnt areas

D. Plants that grows in soil with low pH

**Answer:**



[Watch Video Solution](#)

**64.** This soil is also identified as cold/ heavy soil.

A. Silt soil

B. Loamy soil

C. Clay soil

D. Sandy soil

**Answer:**



[Watch Video Solution](#)

**65.** The soil ideal for cultivation.

A. Sandy soil

B. Loamy soil

C. Silt soil

D. Clay soil

**Answer:**



**Watch Video Solution**

**66.** Plants living in the acidic soil are called.

A. Chasmophytes

B. Lithophytes

C. Oxylophytes

D. Cryptophytes

**Answer:**



**Watch Video Solution**

67. Cryophytes are plants living in.

- A. Sandy soils
- B. Ice surface
- C. Rocky crevices
- D. Rocky surface

**Answer:**



[Watch Video Solution](#)

68. In the soil profile, A-Horizon is also referred to as.

- A. Leaches horizon
- B. Organic horizon
- C. Parent material

D. Weathered horizon

**Answer:**



[Watch Video Solution](#)

69. The B-horizon of soil profile consists of.

- A. Parent bed rock
- B. Organic matter rich with humus
- C. Iron, aluminium and silica rich clay
- D. Partially decomposed organic matter

**Answer:**



[Watch Video Solution](#)



70. The horizon of the soil profile above which understand water is found.

- A. C-Horizon
- B. A-Horizon
- C. R-Horizon
- D. B-Horizon

**Answer:**



**Watch Video Solution**

71. The surface features of earth are called .....

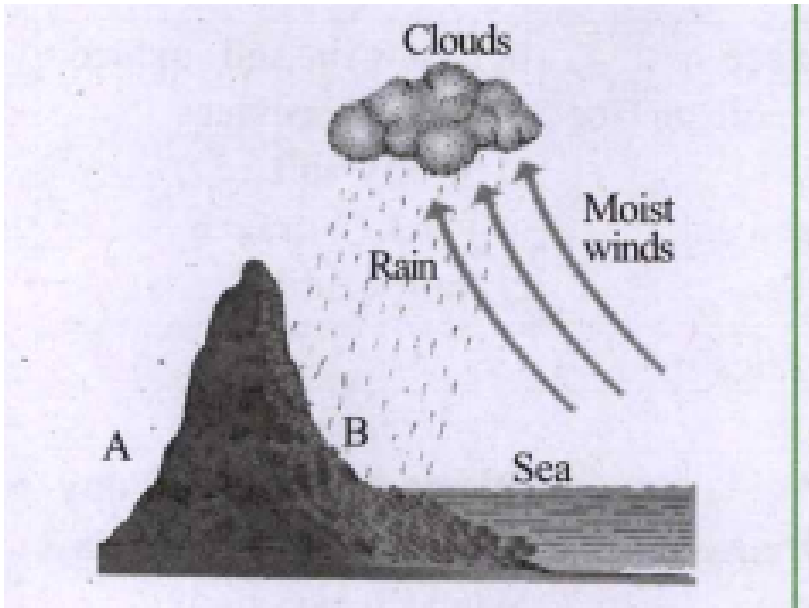
- A. Phytogeography
- B. Palaeogeography
- C. Cryptography

## D. Topography

Answer:

 [Watch Video Solution](#)

72. Observe the image depicting the steepness of mountain given below and identify A and B.



A. A-Normal vegetation, B-Poor vegetation

B. D-Poor vegetation, B-Normal vegetation

C. A-Poor vegetation, B-Rich vegetation

D. A-Rich vegetation, B-Poor vegetation

**Answer:**

 [Watch Video Solution](#)

**73.** The plains and valleys are rich in vegetation due to.

A. Fast drain of surface water and poor retention of water

B. Slow drain of surface water and poor retention of water

C. Slow drain of surface water and better retention of water

D. Fast drain of surface water and better retention of water

**Answer:**

 [Watch Video Solution](#)

74. The interaction between species of two organisms in which both are benefited from obligate association is.

- A. Commensalism
- B. Predation
- C. Mutualism
- D. Competition

**Answer:**



**Watch Video Solution**

75. Identify the algae found in the thalloid body of Anthoceros.

- A. Anabaena
- B. Chlorella
- C. Nostoc

D. Spirogyra

**Answer:**



**Watch Video Solution**

**76.** Anabaena is present in the coralloid roots of this gemnosperm.

A. Ginkgo

B. Taxus

C. Cycas

D. Pinus

**Answer:**



**Watch Video Solution**

**77.** Usnea is a

A. Bryophyte

B. Algae

C. Fern

D. Lichen

**Answer:**



**Watch Video Solution**

**78.** Epiphytes are commonly found in.

A. Temperate forest

B. Evergreen forest

C. Deciduous forest

D. Tropical rain forest

**Answer:**



**Watch Video Solution**

79. As a defense mechanism the plant that produce quinine is.

A. Calotropis

B. Tobacco

C. Cinchona

D. Opuntia

**Answer:**



**Watch Video Solution**

80. ....helps to reconstruct past climates of our planet and flora, fauna and ecosystem in which they lived.

A. Paleoclimatology

B. Climatology

C. Geo climatology

D. Neo climatology

**Answer:**



**Watch Video Solution**

**81.** The bacteria found in symbiotic association with leguminous plants for nitrogen fixation is.

A. Clostridium

B. Haemophilus

C. Bifidobacteria

D. Rhizobium

**Answer:**



**Watch Video Solution**



82. *Snatalum* is an example for.

- A. Total stem parasite
- B. Partial stem parasite
- C. Total root parasite
- D. Partial root parasite

**Answer:**



[Watch Video Solution](#)

83. Identify the species which is not a total root parasite.

- A. *Balanophora*
- B. *Loranthus*
- C. *Orobancha*
- D. *Rafflesia*

**Answer:**



[Watch Video Solution](#)

**84.** The best example for a total stem parasite.

A. Viscum

B. Loranthus

C. Cuscutta

D. Orobanche

**Answer:**



[Watch Video Solution](#)

**85.** Identify the interspecific interaction in which one species is inhibited while the other species is neither benefitted not harmed.

- A. Mutualism
- B. Competition
- C. Parasitism
- D. Amensalism

**Answer:**

 [Watch Video Solution](#)

**86.** Amensalism is also called.

- A. Anitibiotic
- B. Antimicrobial
- C. Antibiosis
- D. Symbiosis

**Answer:**

 [Watch Video Solution](#)

87. Ophrys an orchid resembling the female of an insect so as to able to get pollinated is due to phenomenon of

- A. Myrmecophily
- B. Protective mimicry
- C. Floral mimicry
- D. Co-evolution

**Answer:**



[Watch Video Solution](#)

88. This is an example for protective mimicry.

- A. *Phyllium frondosum*
- B. *Ixodes scapularis*

C. *Bombyx mori*

D. *Periplaneta americana*

**Answer:**



**Watch Video Solution**

**89.** The hydrophytes that float freely on the surface of the water with no contact with soil are called.

A. Submerged floating hydrophytes

B. Rooted-submerged hydrophytes

C. Amphibious hydrophytes

D. free floating hydrophytes

**Answer:**



**Watch Video Solution**

90. This is an example for rooted floating hydrophytes.

- A. Eichhornia
- B. Utricularia
- C. Vallisneria
- D. Marsilea

**Answer:**



**Watch Video Solution**

91. Habenaria is an example for.

- A. Halophytes
- B. Hydrophytes
- C. Hygrophytes
- D. Mesophytes

**Answer:**



[Watch Video Solution](#)

**92.** Roots are totally absent in \_\_\_\_\_

- A. Hydrilla
- B. Ranunculus
- C. Wolffia
- D. Sagittaria

**Answer:**



[Watch Video Solution](#)

**93.** Root caps are replaced by root pockets in.

- A. Hydrilla

B. Sagittaria

C. Eicchornia

D. Nymphaea

**Answer:**



**Watch Video Solution**

**94.** Identify the hydrophyte which is not an example for heterophylly.

A. Ranunculus

B. Limnophila heterophylla

C. Nymphaea

D. Sagittaria

**Answer:**



**Watch Video Solution**



95. Which of the these plants have the ability to withstand anaerobic conditions.

- A. Hygrophytes
- B. Halophytes
- C. Hydrophytes
- D. Epiphytes

**Answer:**



[Watch Video Solution](#)

96. Identify the term associated to the plants that complete their life cycle within a short period of time.

- A. Drought enduring plants
- B. Drought evaders
- C. Drought resistant plants

D. Drought avoiders

**Answer:**



[Watch Video Solution](#)

97. The xerophytic plants are called trichophyllous plants because.

- A. The leaves have spines
- B. The leaves are thick and fleshy
- C. The stem and leaves are covered with hairs
- D. The stem and leaves have a waxy coating

**Answer:**



[Watch Video Solution](#)

98. Identify the species which is not a true xerophyte.

A. Casuarina

B. Nerium

C. Ziziphus

D. Begonia

**Answer:**



**Watch Video Solution**

**99.** Acacia melanoxyton is an example for.

A. Phylloclades

B. Phyllode

C. Cladode

D. Caducous

**Answer:**



**Watch Video Solution**

**100.** The leaves are reduced to scales in.

- A. Opuntia
- B. Capparis
- C. Asparagus
- D. Ziziphus

**Answer:**



[Watch Video Solution](#)

**101.** Identify the species in which the stipules are not modified into spines.

- A. Euphorbia
- B. Ziziphus

C. Capparis

D. Opuntia

**Answer:**



**Watch Video Solution**

**102.** Scotoactive type of stomata is found in.

A. Non-succulents plants

B. Succulent plants

C. Ephemerals

D. True xerophytes

**Answer:**



**Watch Video Solution**

**103.** Identify the factor given below that reduces transpiration in xerophytes.

- A. Presence of thick cuticle and stomata
- B. Absence of cuticle and sunken stomata
- C. Presence of thick cuticle and sunken stomata
- D. Absence of cuticle and stomata

**Answer:**



**Watch Video Solution**

**104.** Halophytes are found in soils that are.

- A. Physically dry and physiologically dry
- B. Physically dry but physiologically wet
- C. Physically wet but physiologically dry

D. Physically wet and physiologically wet

**Answer:**



[Watch Video Solution](#)

**105.** Avicennia has breathing roots called.

A. Pnematofores

B. Pneumatopore

C. Pneumatophores

D. Pneumathodes

**Answer:**



[Watch Video Solution](#)

**106.** Salicornia is an example for.

- A. Succulent halophyte
- B. Succulent xerophyte
- C. Non-succulent xerophyte
- D. Halophytes

**Answer:**

 [Watch Video Solution](#)

**107.** Vivipary mode of seed germination is found in

- A. Mesophytes
- B. Hydrophytes
- C. Halophytes
- D. Epiphytes

**Answer:**

 [Watch Video Solution](#)



**108.** In halophytes, the salt secreting glands are present in.

- A. Stem
- B. Roots
- C. Leaves
- D. Fruit

**Answer:**



**Watch Video Solution**

**109.** The adaptation seen in the seed dispersal of *Asclepias* is.

- A. Censor mechanism
- B. Wings
- C. Small light and inflated covering

D. Featheryt appendages

**Answer:**



**Watch Video Solution**

**110.** Identify the seeds dispersed by water.

A. Poppy

B. Vernonia

C. Terminalia

D. Coconut

**Answer:**



**Watch Video Solution**

111. Identify the species in which the seeds are light, small, provided with aril and encloses air.

- A. Nelumbo
- B. Numphaea
- C. Xanthium
- D. Vernonia

**Answer:**



[Watch Video Solution](#)

112. Identify the plant in which the surface of the fruit or seed has barbs.

- A. Aristida
- B. Andropogon
- C. Xanthium

D. Cleome

**Answer:**



**Watch Video Solution**

**113.** Identify the fruit or seed that is wrongly paired with its dispersal device.

- A. Xanthium-Hooks
- B. Andropogon-Barbs
- C. Aristida-Spines
- D. Boerhaavia-Hooks

**Answer:**



**Watch Video Solution**

114. Identify the species which is known as camel's foot climber.

A. Impatiens

B. Crossandra

C. Bauhinia vahlii

D. Cordia

**Answer:**



[Watch Video Solution](#)

115. Identify the plant species that competes with the tiny fishes for small crustaceans and insects.

A. Drosera

B. Dionaea

C. Utricularia

D. Sarracenia

**Answer:**



[Watch Video Solution](#)

**116.** Assertion: River, lake and canyon found in between the vegetation act as a natural fire break.

Reason: Rivers and lakes which lack vegetation acts as a barrier in spreading the fire.

A. Assertion and Reason are true and Reason is the correct explanation of Assertion

B. Assertion and Reason are true but Reason is not the correct explanation of Assertion

C. Assertion is true but Reason is false.

D. Both Assertion and Reason is false.

**Answer:**



[Watch Video Solution](#)

**117.** Assertion: The spaces left between soil particles are called pore spaces.

Reason: Many organism like bacteria, fungi etc, exist in the soil.

- A. Assertion and Reason are true and Reason is the correct explanation of Assertion
- B. Assertion and Reason are true but Reason is not the correct explanation of Assertion
- C. Assertion is true but Reason is false.
- D. Both Assertion and Reason is false.

**Answer:**



[Watch Video Solution](#)

**118.** Assertion: Loamy soil is ideal for cultivation.

Loamy soil provides good retention and proper drainage of water. ]

- A. Assertion and Reason are true and Reason is the correct explanation of Assertion
- B. Assertion and Reason are true but Reason is not the correct explanation of Assertion
- C. Assertion is true but Reason is false.
- D. Both Assertion and Reason is false.

**Answer:**



[Watch Video Solution](#)

**119.** Assertion: Temperature values are maximum at the equator and decreases towards the poles.

Reason:Vegetation is same from the equator to the poles.



A. Assertion and Reason are true and Reason is the correct explanation of Assertion

B. Assertion and Reason are true but Reason is not the correct explanation of Assertion

C. Assertion is true but Reason is false.

D. Both Assertion and Reason is false.

**Answer:**



[Watch Video Solution](#)

**120.** Assertion: It is an interaction between two species in which both are benefited.

Reason: The species which is killed is predator and the species that kills is prey.

A. Assertion and Reason are true and Reason is the correct explanation of Assertion

B. Assertion and Reason are true but Reason is not the correct explanation of Assertion

C. Assertion is true but Reason is false.

D. Both Assertion and Reason is false.

**Answer:**



**Watch Video Solution**