



CHEMISTRY

BOOKS - MODERN PUBLICATION CHEMISTRY (KANNADA ENGLISH)

CHEMISTRY IN EVERY DAY LIFE

Multiple Choice Question Level I

1. Which of the following is not an antibiotic ?

A. Chloramphenicol

B. Sulphadiazine

C. Penicillin

D. Bithional.

Answer: D



Watch Video Solution

2. The structure of equanil is :

A. 

B. 

C. 

D. 

Answer: C



Watch Video Solution

3. The drug used for treatment of typhoid is :

A. Novalgin

B. Quinine

C. Chloromycetin

D. Paracetamol.

Answer: C



Watch Video Solution

4. Which of the following is used for the treatment of tuberculosis ?

A. Penicillin

B. Streptomycin

C. Aspirin

D. Chloramphenicol.

Answer: B



Watch Video Solution

5. The chemical substances used to lower temperature of the body are called :

A. Antibiotics

B. Analgesics

C. Antipyretics

D. Tranquillizers.

Answer: C



Watch Video Solution

6. Which of the following is not an antipyretic?

A. Paracetamol

B. Aspirin

C. Chloramphenicol

D. Phenacetin.

Answer: C



Watch Video Solution

7. Which of the following is not a tranquillizer ?

A. Barbituric acid

B. Seconal

C. Luminal

D. Phenacetin.

Answer: D



Watch Video Solution

8. Bithional is used as:

A. Tranquillizer

B. Antiseptic

C. Analgesic

D. Disinfectant

Answer: B



Watch Video Solution

9. Drugs which produce sleep and reduce anxiety are :

A. Hypnotics

B. Analgesics

C. Antibiotics

D. Antidepressants.

Answer: A



Watch Video Solution

10. The first antibiotic produced is :

A. Penicillin

B. Chloramphenicol

C. Paracetamol

D. Aspirin.

Answer: A



[Watch Video Solution](#)

11. The first antibiotic was discovered by :

A. Alexander Flemming

B. M. Curie

C. Graham

D. Max. Planck.

Answer: A



[Watch Video Solution](#)

12. The medicines given to patients who are violent and mentally agitated are called :

A. Antibiotics

B. Sedatives

C. Analgesics

D. Antipyretics.

Answer: B



Watch Video Solution

13. The drugs used to relieve pains are called :

A. Antiseptics

B. Antipyretics

C. Analgesics

D. Antibiotics.

Answer: C



Watch Video Solution

14. Which of the following is not an antipyretic?

A. Paracetamol

B. Aspirin

C. Chloramphenicol

D. Phenacetin.

Answer: C



Watch Video Solution

15. Medicine which is antibiotic is :

A. Ampicillin

B. Aspirin

C. Chloroquine

D. Valium.

Answer: A



Watch Video Solution

16. Which of the following is not a target molecule for drug function in body?

A. Carbohydrates

B. Lipids

C. Vitamins

D. Proteins

Answer: C



Watch Video Solution

17. Equanil is _____

A. artificial sweetner

B. tranquilizer

C. antihistamine

D. antifertility drug

Answer: B



Watch Video Solution

18. Which of the following statements is not correct ?

A. Some antiseptics can be added to soaps.

B. Dilute solutions of some disinfectants can be used as antiseptic.

C. Disinfectants are antimicrobial drugs.

D. Antiseptic medicines can be ingested.

Answer: D



Watch Video Solution

19. Dettol is a mixture of chloroxylenol and :

A. phenol

B. terpineol

C. chloramphenicol

D. Bithional.

Answer: B



Watch Video Solution

20. Boric acid a dilute solution is used as :

A. Antibiotics

B. Antiseptic

C. tranquilizer

D. analgesic.

Answer: B



Watch Video Solution

21. Which of the following is used as a preservative of food ?

A. Sodium sulphate

B. Saccharin

C. Sucrolose

D. Sodium metabisulphite

Answer: D



Watch Video Solution

22. Which of the following is not an artificial sweetening agent ?

A. Dulcin

B. Alitame

C. Sodium benzoate

D. Aspartame .

Answer: C



Watch Video Solution

23. Which of the following is used as an antioxidant in foods ?

A. Saccharin

B. Methylated hydroxy anisole

C. Ormeloxifene

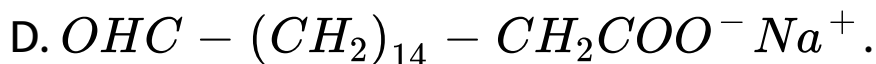
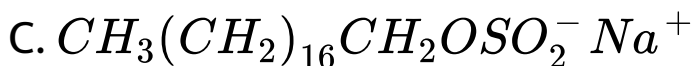
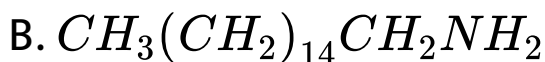
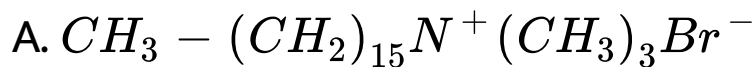
D. Alitame .

Answer: B



Watch Video Solution

24. Which of the following is not a surfactant ?



Answer: B



Watch Video Solution

25. Which of the following statements is not correct ?

A. Cationic detergents have germicidal properties .

B. Bacteria can degrade the detergents containing highly branched chains.

C. Some synthetic detergents can give foam even in the cold water .

D. Synthetic detergents are not soaps .

Answer: B



Watch Video Solution

Multiple Choice Question Level Ii

1. The broad spectrum antibiotic among the following is :

A. Chloramphenicol

B. Paracetamol

C. Bithional

D. Morphine.

Answer: A



Watch Video Solution

2. Which of the following act both as antipyretics and analgesics ?

A. Aspirin

B. Paracetamol

C. Chloroxylenol

D. Seconal.

Answer: A



Watch Video Solution

3. Aspirin is:

A. Barbituric acid

B. Seconal

C. Chloro-xyleneol

D. Acetyl salicylic acid.

Answer: D



Watch Video Solution

4. Equanil is :

A. Antibiotic

B. Tranquillizer

C. Antiseptic

D. Analgesic.

Answer: B



Watch Video Solution

5. Which one of the following is not used as a filler in laundry soaps?

A. Sodium silicate

B. Glycerol

C. Sodium rosinate

D. borax

Answer: B



6. Which of the following is paracetamol ?

A. 

B. 

C. 

D. 

Answer: B



[Watch Video Solution](#)

7. Aspirin is obtained by the reaction of CH_3COCl with:

A. Benzoic acid

B. Phenol

C. Salicylic acid

D. Benzaldehyde.

Answer: C



Watch Video Solution

8. Heroin is a derivative of:

A. morphine

B. cocaine

C. nicotine

D. caffeine.

Answer: A



Watch Video Solution

9. Which of the following statements is not true?

- A. Some disinfectants in low concentration can be used as antiseptics
- B. Sulphadiazine is a synthetic antibacterial
- C. Ampicillin is natural antibiotic
- D. Aspirin is analgesic and antipyretic.

Answer: C



Watch Video Solution

10. Salol can be used as:

- A. antiseptic
- B. antipyretic
- C. both
- D. none.

Answer: A



Watch Video Solution

11. The drug effective for curing malaria is :

A. quinine

B. aspirin

C. equanil

D. analgin.

Answer: A



Watch Video Solution

12. Commonly used antiseptic 'Dettol' is a mixture of:

A. o-cresol + terpineol

B. Phenol + terpineol

C. Chloroxylenol + terpineol

D. o-chlorophenol + terpineol.

Answer: C



Watch Video Solution

13. The structure of phenacetin is:

A. 

B. 

C. 

D. 

Answer: A



Watch Video Solution

14. Which of the following is used to cure typhoid ?

A. Streptomycin

B. Chloromphenicol

C. Penicillin

D. Tetracycline.

Answer: B



Watch Video Solution

15. Which of the following sets of diseases is caused by bacteria?

A. Malaria

B. Tuberculosis

C. Dysentery

D. Syphilis.

Answer: B



Watch Video Solution

16. Which of the following substance is added to soap to make it antiseptic ?

A. Iodine

B. Bithional

C. $KMnO_4$

D. Cl_2 water.

Answer: B



Watch Video Solution

17. The central nervous system depressants that reduce the nervous tension and promote relaxation without producing sleep are called :

A. hypnotics

B. sedatives

C. anaesthetics

D. antibacterials.

Answer: B



Watch Video Solution

18. Progestogens and oestrogens are used as:

A. Antacids

B. Antifertility drugs

C. Analgesic

D. Antibiotics.

Answer: B



Watch Video Solution

19. The bacteriostatic antibiotic among the following is :

- A. Erythromycin
- B. Penicillin
- C. Aminoglycoside
- D. Ofloxacin.

Answer: A



Watch Video Solution

20. The role of phosphate in detergent powder is to:

A. Control pH level of the detergent water mixture

B. Remove Ca^{2+} and Mg^{2+} ions from the water that causes the hardness of water

C. Provide whiteness to the fabrics

D. Form solid detergent as phosphate-less detergent are liquid in nature.

Answer: B



Watch Video Solution

21. Which one among the following is not an analgesic?

A. Ibuprofen

B. Naproxen

C. Aspirin

D. Valium.

Answer: D



Watch Video Solution

22. Bithional is added to soap as an additive to function as a/an :

A. Softener

B. Hardener

C. Dryer

D. Antiseptic.

Answer: D



Watch Video Solution

23. Which of the following is employed as Tranquilizer?

A. Naproxen

B. Tetracycline

C. Chloropheniramine

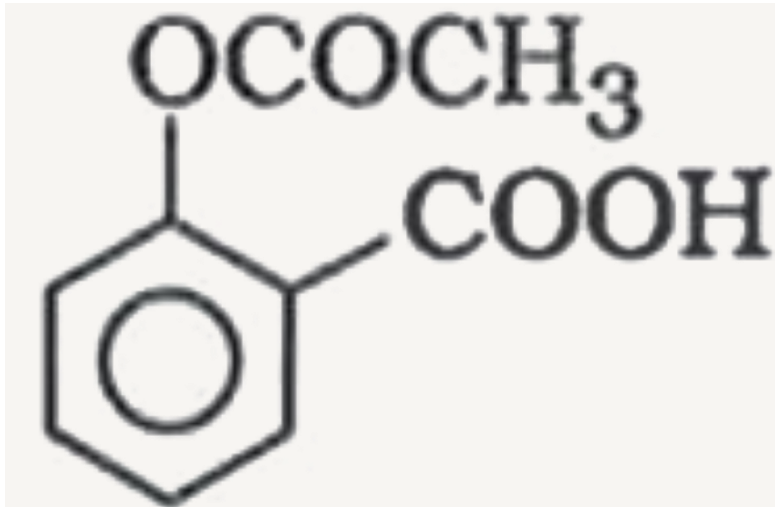
D. Equanil.

Answer: D



Watch Video Solution

24. The compound



is used

as:

A. antiseptic

B. antibiotics

C. analgesic

D. pesticide.

Answer: C



Watch Video Solution

25. Antiseptics and disinfectants either kill or prevent the growth of micro-organisms.

Identify which of the following statement is not true?

A. Dilute solution of boric acid and hydrogen peroxide are strong antiseptics

B. Disinfectants harm the living tissues.

C. A 0.2% solution of phenol is an antiseptic while 1% solution acts as a disinfectant

D. Chlorine and iodine are used as strong disinfectants.

Answer: A



Watch Video Solution

26. Which is the correct statement about birth control pills?

- A. Contain estrogen only.
- B. Contain progesterone only.
- C. Contain a mixture of estrogen and progesterone derivatives.
- D. Progesterone enhances ovulation.

Answer: C



Watch Video Solution

27. Which of the following statements is correct?

- A. Some tranquilisers function by inhibiting the enzymes which catalyse the degradation of noradrenaline.
- B. Tranquilisers are narcotic drugs.

C. Tranquilisers are chemical compounds that do not affect the message transfer from nerve to receptor.

D. Tranquilisers are chemical compounds that can relieve pain and fever.

Answer: A



Watch Video Solution

28. Salvarsan is arsenic containing drug which was first used for the treatment of _____

A. syphilis

B. typhoid

C. meningitis

D. dysentery

Answer: A



Watch Video Solution

29. A narrow spectrum antibiotic is active against _____

A. gram positive or gram negative bacteria.

B. gram negative bacteria only.

C. single organism or one disease.

D. both gram positive and gram negative bacteria.

Answer: A



Watch Video Solution

30. The compound that causes general antidepressant action on the central nervous system belongs to the class of _____

- A. analgesics
- B. tranquilizers
- C. narcotic analgesics
- D. antihistamines

Answer: B



Watch Video Solution

31. Compound which is added to soap to impart antiseptic properties is _____

A. sodium laurylsulphate

B. sodium dodecylbenzenesulphonate

C. rosin

D. bithional

Answer: D



Watch Video Solution

32. Which of the following enhances leathering property of soap?

A. Sodium carbonate

B. Sodium rosinate

C. Sodium stearate

D. Trisodium phosphate

Answer: B



Watch Video Solution

33. Glycerol is added to soap. It functions

A. as a filler.

B. to increase leathering.

C. to prevent rapid drying.

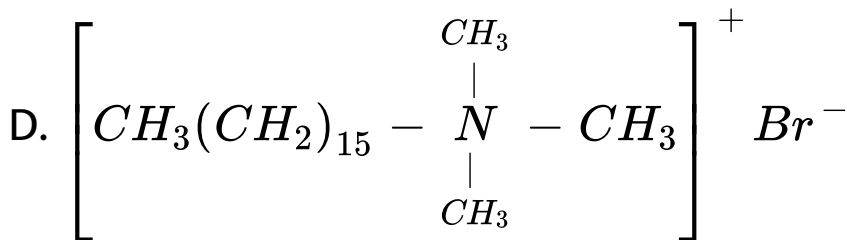
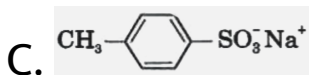
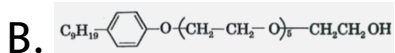
D. to make soap granules.

Answer: C



Watch Video Solution

34. Which of the following is an example of liquid dishwashing detergent?



Answer: B



Watch Video Solution

35. Polyethyleneglycols are used in the preparation of which type of detergents?

- A. Cationic detergents
- B. Anionic detergents
- C. Non-ionic detergents
- D. Soaps

Answer: C



Watch Video Solution

36. Which of the following statements is not true about enzyme inhibitors?

A. Inhibit the catalytic activity of the enzyme.

B. Prevent the binding of substrate.

C. Generally a strong covalent bond is formed between an inhibitor and an enzyme.

D. Inhibitors can be competitive or non competitive.

Answer: C



Watch Video Solution

37. Chloramphenicol is

A. antipyretic

B. broad spectrum antibiotic

C. azo dye

D. tranquillizer

Answer: B



Watch Video Solution

38. Sulphonamides act as

A. hypnotics

B. antidepressants

C. antimicrobials

D. antiseptics

Answer: C



Watch Video Solution

39. Benadryl is used as

- A. antiseptic
- B. disinfectant
- C. analgesic
- D. antihistamine.

Answer: D



[Watch Video Solution](#)

40. Mifepristone is used as

- A. antimicrobial
- B. antimalarial
- C. antifertility drug
- D. tranquilizer

Answer: C



[Watch Video Solution](#)

41. Which of the following is not an artificial sweetening agent ?

A. Sucrolose

B. Alitame

C. Sodium benzoate

D. Aspartame

Answer: C



Watch Video Solution

42. The compound ibuprofen is used as

A. antiseptic

B. antibiotic

C. analgesic

D. pesticide.

Answer: C



Watch Video Solution

43. Tincture of iodine is

- A. aqueous solution of I_2
- B. solution of I_2 in aqueous KI
- C. alcoholic solution of I_2
- D. aqueous solution of KI

Answer: C



Watch Video Solution

44. The artificial sweetener containing chlorine that has the appearance and taste as that of sugar and is stable at cooking temperature is

A. Aspartame

B. Saccharin

C. Sucralose

D. Alitame

Answer: C



Watch Video Solution

45. Which of the following is not a tranquillizer?

A. Equanil

B. Veronal

C. Salvarsan

D. Serotonin

Answer: C



Watch Video Solution

46. The cationic detergent that is used in hair conditioners is

A. sodium dodecylbenzene sulphonate

B. sodium lauryl sulphate

C. tetramethyl ammonium chloride

D. cetyl-trimethyl ammonium bromide

Answer: B



Watch Video Solution

47. Salts of sorbic acid and propionic acid are used as

- A. antioxidants
- B. flavouring agents
- C. food preservatives
- D. nutritional supplements

Answer: C



Watch Video Solution

48. Terfenadine is commonly used as an

A. tranquilizer

B. antihistamine

C. antimicrobial

D. antibiotic

Answer: B



Watch Video Solution

49. Which one of the following is employed as antihistamine ?

- A. Chloramphenicol
- B. Diphenylhydramine
- C. Norethindrone
- D. Omeprazole

Answer: B



Watch Video Solution

50. Which one of the following is not used as a filler in laundry soaps?

A. Sodium silicate

B. Glycerol

C. Sodium rosinate

D. Borax

Answer: B



Watch Video Solution

Multiple Choice Question Level Iii

1. Aspirin is known as :

A. Methyl salicylic acid

B. Acetyl salicylic acid

C. Phenyl salicylate

D. Acetyl salicylate

Answer: B



Watch Video Solution

2. Which of the following compounds is not an antacid ?

A. Aluminium hydroxide

B. Cimetidine

C. Phenelzine

D. Ranitidine .

Answer: C



Watch Video Solution

Recent Examination Questions

1. Oils are liquids at room temperature since they contain higher percentage of

A. oleates

B. palmitates

C. stearates

D. myristates.

Answer: A



Watch Video Solution

2. Which of the following is not true ?

A. Prontosil is not converted into sulphaniamide in the body.

B. Erythromycin is a bacteriostatic antibiotic.

C. Vancomycin is a broad spectrum antibiotic

D. Ampicillin is not a natural antibiotic.

Answer: A



Watch Video Solution

3. Detergents can be made biodegradable and pollution free by :

- A. Using cyclic hydrocarbon chain
- B. Shortening the hydrocarbon chain
- C. Using unbranched hydrocarbon chain
- D. Hydrocarbons with more branching.

Answer: C



Watch Video Solution

4. Sodium rosinate is generally added in the soap because it :

- A. Prevents rapid drying of soap
- B. Produces rich lather
- C. Gives antiseptic property
- D. Acts as a perfume.

Answer: B



Watch Video Solution