



BIOLOGY

BOOKS - FULL MARKS BIOLOGY (TAMIL ENGLISH)

REPRODUCTION IN PLANTS AND ANIMALS

Textual Evaluation Solved | Choose The Correct Answer

1. The plant which propagates with the help of its leaves is

_____.

A. Onion

B. Neem

C. Ginger

D. Bryophyllum

Answer: D



Watch Video Solution

2. Asexual reproduction takes place through budding in ____

A. Amoeba

B. Yeast

C. Plasmodium

D. Bacteria

Answer: B



Watch Video Solution

3. Syngamy results in the formation of _____.

- A. Zoospores
- B. Conidia
- C. Zygote
- D. Chlamydospores

Answer: C



Watch Video Solution

4. The essential parts of a flower are ____.

- A. Calyx and Corolla
- B. Calyx and Androecium

C. Corolla and Gynoecium

D. Androecium and Gynoecium

Answer: D



Watch Video Solution

5. Anemophilous flowers have ____.

A. Sessile stigma

B. Small smooth stigma

C. Colored flower

D. Large feathery stigma

Answer: D



Watch Video Solution

6. Male gametes in anghiosperms are formed by the division of _____.

- A. Generative cell
- B. Vegetative cell
- C. Microspore mother cell
- D. Microspore

Answer: A



Watch Video Solution

7. What is true of gametes ?

- A. They are diploid
- B. They give rise to gonads
- C. They produce hormones
- D. They are formed from gonads

Answer: D



Watch Video Solution

8. A single highly coiled tube where sperms are stored , get concentrated and mature is known as _____.

- A. Epididymis
- B. Vasa efferentia
- C. Vas deferens

D. Seminiferous tubules

Answer: D



Watch Video Solution

9. The large elongated cells that provide nutrition to developing sperms are _____.

A. Primary germ cells

B. Sertoli cells

C. Leydig cells

D. Spermatogonia

Answer: B



Watch Video Solution

10. Estrogen is secreted by _____.

- A. Anterior pituitary
- B. Primary follicle
- C. Graafian follicle
- D. Graafian follicle

Answer: B



Watch Video Solution

11. Which one of the following is an IUCD ?

- A. Copper - T

B. Oral pills

C. Diaphragm

D. Tubectomy

Answer: A



Watch Video Solution

Textual Evaluation Solved li Fill In The Blanks

1. The embryo sac in a typical dicot at the time of fertilization is _____.



Watch Video Solution

2. After fertilization , the ovary develops into _____.



Watch Video Solution

3. Planaria reproduces asexually asexually by _____.



Watch Video Solution

4. Fertilization is _____ in humans.



Watch Video Solution

5. The implantation of the embryo occurs at about ____day of fertilization .



Watch Video Solution

 Watch Video Solution

6. _____ is the first secretion from the mammary gland after child birth .



Watch Video Solution

7. Fill in the blanks:

(i) Prolactin is a hormone produced by_____.

(ii) Fertilization is _____ in humans.



Watch Video Solution

Textual Evaluation Solved Iii Match The Following

Column I

Column II

1. (a) 1. Fission (a) Spirogyra
2. Budding (b) Amoeba
3. Fragmentation (c) Yeast

(b) Match the following terms with their respective meanings:

1. Parturition — (a) Duration between pregnancy and birth
2. Gestation — (b) Attachment of zygote to endometrium
3. Ovulation — (c) Delivery of baby from uterus
4. Implantation — (d) Release of egg from Graafian follicle



Watch Video Solution

Textual Evaluation Solved iv State Whether The Following Statements Are True Or False Correct The False Statement 1

1. Stalk of the ovule is called pedicel .



Watch Video Solution

2. Seeds are the product of asexual reproduction .



Watch Video Solution

3. Yeast reproduces asexually by means of multiple fission .



Watch Video Solution

4. The part of the pistil which serves as a receptive structure for the pollen is called as style.



Watch Video Solution

5. Insect pollinated flowers are characterized by dry and smooth pollen.





[Watch Video Solution](#)

6. Sex organs produce gametes which are diploid .



[Watch Video Solution](#)

7. LH is secreted by the posterior pituitary .



[Watch Video Solution](#)

8. Menstrual cycle ceases during pregnancy .



[Watch Video Solution](#)

9. Surgical methods of contraception prevent gamete formation .



[Watch Video Solution](#)

10. The increased level of estrogen and progesterone is responsible for menstruation .



[Watch Video Solution](#)

Textual Evaluation Solved V Answer In A Word Or Sentence

1. IF one pollen grain produces two male gametes how many pollen grains are needed to fertilize 10 Ovules?



[Watch Video Solution](#)

2. In which part of the flower germination of pollen grains takes place ?



Watch Video Solution

3. Name two organisms which reproduces through budding .



Watch Video Solution

4. Mention the function of endosperm.



Watch Video Solution

5. Name the hormone responsible for the vigorous contractions of the uterine muscles .



Watch Video Solution

6. What is the enzyme present in acrosome of sperm ?



Watch Video Solution

7. When is world Menstrual Hygiene Day observed ?



Watch Video Solution

8. What is the need for contraction ?



Watch Video Solution

 [Watch Video Solution](#)

9. Name the part of the human female reproductive system where the following occurs .

Fertilization



[Watch Video Solution](#)

Textual Evaluation Solved Vi Short Answer Question

1. (a) Differentiate the following monocot root and Dicot root.
- (b) What will happen if you cut planaria into small fragments?



[Watch Video Solution](#)

2. Why is vegetative propagation practiced for growing some type of plants?



Watch Video Solution

3. How does binary fission differ from multiple fission ?



Watch Video Solution

4. What is triple fusion ?



Watch Video Solution

5. Write the characteristics of insect pollinated flowers.



Watch Video Solution

 [Watch Video Solution](#)

6. Name the secondary sex organs in male

 [Watch Video Solution](#)

7. What is colostrum? How is milk production hormonally regulated?

 [Watch Video Solution](#)

8. How can menstrual hygiene be maintained during menstrual days?

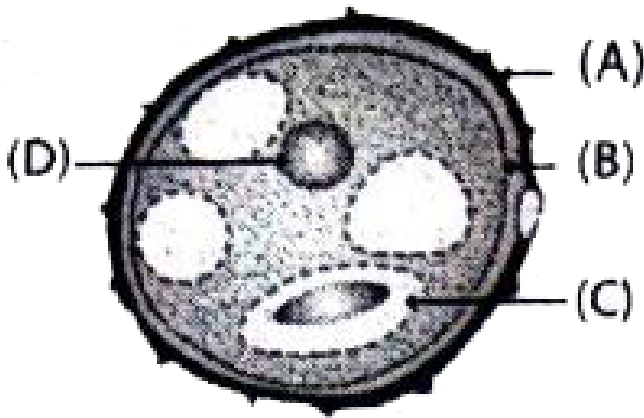
 [Watch Video Solution](#)

9. How does developing embryo gets its nourishment inside the mother 's body ?



Watch Video Solution

10. Identify the parts A,B,C and D.



Watch Video Solution

11. Write the events involved in the sexual reproduction of a flowering plant .

Discuss the first event and write the types .



Watch Video Solution

12. Why are the human testes located outside the abdominal cavity ? Name the pouch in which they are present .



Watch Video Solution

13. Give reason for the following statement.

(i) Luteal phase of menstrual cycle is also called as secretory phase.

(ii) Menstrual hygiene is essential for women.

 [Watch Video Solution](#)

14. Why are family planning methods not adopted by all people of our country?

 [Watch Video Solution](#)

Textual Evaluation Solved Vii Long Answer Questions

1. With a neat labelled diagram describe the parts of a typical angiosperm ovule .

 [Watch Video Solution](#)

2. What are the phases of menstrual cycle? Indicate the changes in the ovary and uterus.



[Watch Video Solution](#)

Textual Evaluation Solved Viii Higher Order Thinking Skills Hots

1. In angiosperms, the pollen germinates to produce pollen tube that carries two gametes. What is the purpose of carrying two gametes when single gamete can fertilize the egg?



[Watch Video Solution](#)

2. Why menstrual cycle does not take place before puberty and during pregnancy ?



[Watch Video Solution](#)

3. Read the following passage and answer the questions that follow

Rahini and her parents were watching a television programme . An advertisement flashed on the screen which was promoting use of sanitary napkins . Rahini's parents suddenly changed the channel , but she objected to her parents and explained the need and importance of such advertisement .

What is first menstruation called ? when does it occur?



[Watch Video Solution](#)

Additional Questions I Fill In The Blanks

1. The reproduction process is to preserve individual species and is called



Watch Video Solution

2. The pollen grains in a flower are produced in the anther within the _____.



Watch Video Solution

3. _____ contains future plant .



Watch Video Solution

4. Each testis is covered with a layer of fibrous tissue called _____.



Watch Video Solution

5. _____ is the first secretion from the mammary gland after child birth .



Watch Video Solution

6. The organs of reproductive system are divided intoand(accessory) sex organs.



Watch Video Solution

7. Plasma membrane is surrounded by inner thin ____ in human ovum .



Watch Video Solution

8. is the practice of healthy living and personal cleanliness.



Watch Video Solution

9. Testosterone initiates the process of



Watch Video Solution

10. The cortex of ovary is composed of a connective tissue called



[Watch Video Solution](#)

11. In plants, the fusion of one sperm with the egg is called



[Watch Video Solution](#)

12. The provides energy for the movement of tail in sperm, causing sperm motility, which is essential for fertilization.



[Watch Video Solution](#)

13. Self - pollination is also known as _____.



Watch Video Solution

14. During spore formation , sporangium develops from the _____.



Watch Video Solution

Additional Questions li Choose The Correct Pair From The Following

1. Choose the correct pair from the following:

A. Chalaza and pollination

- B. Calyx and spores
- C. Anemophily and hydrophily
- D. Stamens and Planaria

Answer: C



Watch Video Solution

2. Choose the correct pair from the following:

- A. Oogenesis and spermatogenesis
- B. Fragmentation and Fertilization
- C. Primary follicle and fission
- D. Micropyle and Regeneration

Answer: A



[Watch Video Solution](#)

3. Choose the correct pair from the following:

- A. Scrotum and sporangium
- B. Pollination and population
- C. Spermatogenesis and seminiferous tubules
- D. Diaphragm and Blastocyst

Answer: C



[Watch Video Solution](#)

4. Choose the correct pair from the following:

- A. Autogamy and Budding
- B. Funiculus and chalaza
- C. Bulbils and spirogyra
- D. Polar nuclei and pollination

Answer: B



View Text Solution

5. Choose the correct pair from the following:

- A. Tuberous root and granulosa cells
- B. Corolla and graafian follicle
- C. Synergids and Regeneration
- D. Vegetative and generative cell

Answer: D



View Text Solution

Additional Questions Iii Match The Following

- | | | |
|----------------------|---|----------------------------|
| 1. Off springs | — | (a) Pollination by insects |
| 2. Anemophily | — | (b) Pollination by animals |
| 3. Spermatogenesis | — | (c) Blood vessels |
| 1. 4. Umbilical cord | — | (d) Expulsion of young one |
| 5. Entomophily | — | (e) Seminiferous tubules |
| 6. Parturition | — | (f) Sexual reproduction |
| 7. Zoophily | — | (g) Pollination by wind |



Watch Video Solution

Additional Questions Iv Choose The Correct Answer

1. The male and the female gametes contain this material on the chromosomes, which transmit the characteristic traits to the next generation.

A. genes

B. chromoplast

C. septum

D. spores

Answer: A



Watch Video Solution

2. The female part of the flower is

A. Androecium

B. Anemophily

C. Gynoecium

D. Micropyle

Answer: C



Watch Video Solution

3. The corona radiata is formed of

A. Vitelline membrane

B. Oxytocin

C. Zygote

D. Follicle

Answer: D



[Watch Video Solution](#)

4. During pregnancy , the uterus expands upto _____ times of its normal size .

A. 200 times

B. 500 times

C. 600 times

D. 800 times

Answer: B



[Watch Video Solution](#)

5. Membrane forming surface layer of the ovum is called _____.

A. Entomophily

B. Exine

C. Vitelline membrane

D. Intine

Answer: C



Watch Video Solution

Additional Questions V Write True Or False For The Following Statements Write The Correct Statement For The Incorrect Statement

1. Sexual reproduction involves the fusion of two diploid gametes to form a haploid individual (Zygote).



Watch Video Solution

2. Accessory sex organ in man include the Gonads. (Testes in males and Ovaries in female).



[Watch Video Solution](#)

3. The connective tissue of Cortex called stroma, is lined by the germinal epithelium cells called Granulosa cells.



[Watch Video Solution](#)

4. The mature ovum or egg in female is elliptical in shape and has full of yolk.



[Watch Video Solution](#)

5. The menstrual cycle ceases around 48-50 years of age and this stage is termed as menopause



Watch Video Solution

Additional Questions Vi Answer The Following Briefly

1. What is vegetative reproduction? Give an example.



Watch Video Solution

2. What are the significance of fertilization and the post fertilization changes?



Watch Video Solution

3. Draw a diagram to show sopro formation in Rhizopus.



Watch Video Solution

4. Explain the types of Urinary Tract Infection?



Watch Video Solution

5. Explain the following:

(a) Toilet Hygiene:

(b) Napkin Hygiene:

© Menstrual Hygiene:



Watch Video Solution

6. Explain the structure of the following. (a) Testes (b) Ovary



Watch Video Solution

7. What do you know about National Health Programme?



Watch Video Solution

8. What is Gastrulation?



Watch Video Solution

9. What is implantation?



Watch Video Solution

Additional Questions Vii Draw A Labelled Diagram Of The Following

1. Cross Section of:

(a) Human testes (b) Human ovary



Watch Video Solution

Additional Questions Viii Abbreviations

1. Write the expansion for the following

WHO - World Health Organization



Watch Video Solution

2. Write the expansion for the following

RCH - Reproductive and Child Health Care



[Watch Video Solution](#)

3. Write the expansion for the following

MCH - Maternal and Child Health Care



[Watch Video Solution](#)

4. Write the expansion for the following

TD - Sexually Transmitted Diseases



[Watch Video Solution](#)

5. Write the expansion for the following

IUD - Intra Uterine Device



[Watch Video Solution](#)

6. Write the expansion for the following

UTI



[Watch Video Solution](#)

7. Write the expansion for the following

LH - Luteinizing Hormone



[Watch Video Solution](#)

8. Write the expansion for the following

FSH - Follicle Stimulating Hormones



[Watch Video Solution](#)

Additional Questions | Answer The Following In Detail Draw Diagrams Wherever Necessary

1. With the help of a neat labelled diagram, explain, how does fertilization take place in flowering plants.



[Watch Video Solution](#)

2. With examples and with the help of a neat labelled diagram, explain the different types of vegetative reproduction of

plants.



Watch Video Solution

3. Explain the two types of pollination and write the advantages and the disadvantages of the types of pollination.



Watch Video Solution

4. Describe the structure of the human ovum with a neat labelled diagram.



Watch Video Solution

5. Explain the Agents of cross-pollination.





[Watch Video Solution](#)

6. Explain the parts of a flower, with a neat labelled diagram.



[Watch Video Solution](#)

7. Explain the steps involved from fertilization to foetal development in human.



[Watch Video Solution](#)

8. Methods of family planning



[Watch Video Solution](#)