



BIOLOGY

BOOKS - FULL MARKS BIOLOGY (TAMIL ENGLISH)

SECONDARY GROWTH

Text Evaluation Solved

1. Consider the following statements

In spring season vascular cambium

(i) is less active

(ii) produces a large number of xylary elements

(iii) forms vessels with wide cavities

A. (i) is correct but (ii) and (iii) are not correct

B. (i) is not correct but (ii) and (iii) are not correct

C. (i) and (ii) are correct but (iii) is not correct

D. (i) and (ii) are not correct but (iii) is correct

Answer: D



Watch Video Solution

2. Usually , the monocotyledons do not increase their girth, because

A. They posses actively dividing cambium

B. They do not possess actively dividing cambium

C. Ceases activity of cambium

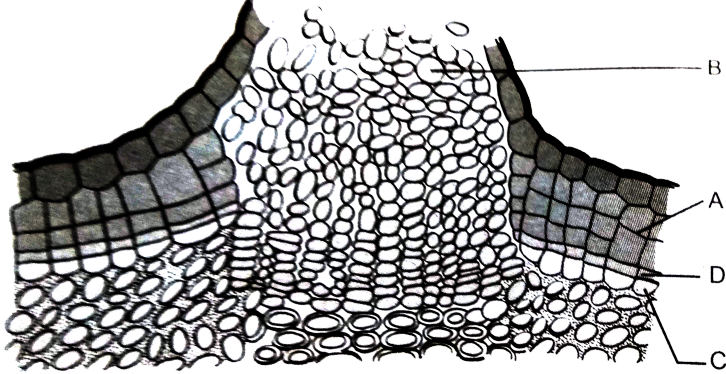
D. All are correct

Answer: B



Watch Video Solution

3. In the diagram of Identical the aprts marked as A,B,C,D.



A. A. phellem , B. Complementary tissue , C.
Phelloderm ,D. Phellogen .

B. A . Complementary tissue , B . Phellem , C
. Phellogen , D . Phelloderm

C. A. Phellogen , B. Phellem , C. Phelloderm
,D. complementary tissue

D. A. Phelloderm , B. Phellem , C .

Complementary tissue , D . Phellogen

Answer: A



Watch Video Solution

4. The common bottle cork is a product of

A. Dermatogen

B. Phellogen

C. Xylem

D. Vascular cambium

Answer: D



Watch Video Solution

5. What is the fate of primary xylem in a dicot root showing extensive secondary growth?

A. It is retained in the centre of the axis

B. It gets crushed

C. May or may not get crushed

D. It gets surrounded by primary phloem

Answer: B



Watch Video Solution

6. In a forest, if the bark of a tree is damaged by the horn of a deer, How will be plant overcome the damage?



Watch Video Solution

7. In which season the vessels of angiosperms are larger in size, why ?



Watch Video Solution

8. Continuous state of dividing tissues called meristem. In connection to this, what is the role of lateral meristem?



Watch Video Solution

9. A timber merchant bought 2 logs of wood from a forest & named A & B , The log A was 50 year old & B was 20 years old. Which log of wood will last longer for the merchant ? Why ?



Watch Video Solution

10. A transverse section of the trunk of a tree shows concentric rings which are known as growth rings . How are these rings formed ? What are the significance of these rings ?





[Watch Video Solution](#)

Text Book Activities Solved

1. Generally monocots do not have secondary growth , but palms and bamboos have woody stems . Find the reason .



[Watch Video Solution](#)

Additional Questions Solved

1. Longitudinal growth refers to

- A. Primary growth
- B. Secondary growth
- C. Tertiary growth
- D. Abnormal growth

Answer: A



Watch Video Solution

2. Secondary growth is absent in.

A. Gymnosperms

B. Angiosperms

C. Dicots

D. Monocots

Answer: D



Watch Video Solution

3. Interfascicular cambium originates from

.....

A. Procambium

B. Vascular cambium

C. Pith

D. Medullary rays

Answer: D



Watch Video Solution

4. is also called as wood .

- A. Primary xylem
- B. Primary Phloem
- C. Secondary xylem
- D. Pith

Answer: C



Watch Video Solution

5. Softwood lacks

A. Tracheids

B. Pith

C. Vessels

D. Medullary rays

Answer: C



Watch Video Solution

6. produces the primary plant body .

A. Procambium

B. Apical meristem

C. Lateral meristem

D. Vascular cambium

Answer: B



Watch Video Solution

7. Dendrochronology deals with determining the

A. Growth of trees

B. Age of trees

C. Branching pattern of trees

D. Growth and climatic influence in trees

Answer: B



Watch Video Solution

8. Diffuse porous wood is seen in

.....

A. Quercus

B. Maple

C. Pinus

D. Acer

Answer: D



Watch Video Solution

9. The balloon - like swelling blocking the lumen of xylem vessels are called

.....

A. Xyloses

B. Callose

C. Tyloses

D. Tylosoids

Answer: C



Watch Video Solution

10. Sapwood can also be termed as

.....

A. Duramen

B. Porous wood

C. Phellogen

D. Alburnum

Answer: D



Watch Video Solution

11. Hematoxylin especially stains

A. Mitochondria

B. Nucleus

C. Golgi bodies

D. Ribosomes

Answer: B



Watch Video Solution

12. Sun hemp is obtained from

A. *Crotolaria juncea*

B. *Corchorus capsularis*

C. *Linum usitatissimum*

D. *Cannabis sativa*

Answer: A



Watch Video Solution

13. The non - living cork cells are with
..... walls .

A. Lignified

B. Suberized

C. Cutinised

D. Cellulose rich

Answer: B



Watch Video Solution

14. gives rise to secondary cortex .

A. Phelloderm

B. Suberized

C. Phellogen

D. Periderm

Answer: A



Watch Video Solution

15. Scale barks can be observed in

.....

A. Guava

B. Quercus

C. Coconut

D. Neem

Answer: A



Watch Video Solution

16. Which of the following is termed as Cork ?

A. Phellem

B. Periderm

C. Phellogen

D. Phelloderm

Answer: A



Watch Video Solution

17. Polyderm is found in

A. Stem

B. Roots

C. Underground stem

D. Both (a) and (c)

Answer: D



Watch Video Solution

18. are formed only during secondary growth .

A. Stomata

B. Endodermis

C. Pith

D. Lenticel

Answer: D



Watch Video Solution

19. Turpentine is obtained from species .

A. Cinchona

B. Acacia

C. Pinus

D. Cinnamomum

Answer: C



Watch Video Solution

20. Rubber is a

A. Latex

B. Resin

C. Alkaloid

D. Drug

Answer: A



[Watch Video Solution](#)

Additional Questions Solved Veryshort Answer Type Questions

1. Which meristem is responsible for secondary growth in dicots ? Mention its types .



[Watch Video Solution](#)

2. What is vascular cambial ring?





Watch Video Solution

3. Name the two types of initials developed by vascular cambium .



Watch Video Solution

4. What happens to the primary xylem and phloem during secondary growth ?



Watch Video Solution

5. Differentiate between diffuse porous wood and ring porous wood .



Watch Video Solution

6. State the types of lateral meristem , their role in woody plants .



Watch Video Solution

7. Spring wood - comment



Watch Video Solution

8. Define dendroclimatology.



Watch Video Solution

9. Which study does dendrochronolgy deals with ?



Watch Video Solution

10. What do you mean by the term "Autumn Wood" ?



Watch Video Solution

11. All growth rings are not annual .Why ?



Watch Video Solution

12. State the location of tyloses .



Watch Video Solution

13. List out the substances that are accumulated in tyloses .



Watch Video Solution

14. What are tylosoids ?



Watch Video Solution

15. Why the heart wood is unable to conduct water ?



Watch Video Solution

16. Give the proper botanical term for heart wood and sap wood ?



Watch Video Solution

17. Write a brief note on Haematoxylin .



Watch Video Solution

18. From where does the Canada balsam is obtained ? Mention its use .



Watch Video Solution

19. List out names of the plants and te types of bast fibres produced from that plant .



Watch Video Solution

20. What is periderm ? Mention its components .



Watch Video Solution

21. What is Phelloderm ?



Watch Video Solution

22. What are called Lenticels?



Watch Video Solution

23. Define filling tissue .



Watch Video Solution

Additional Questions Solved Short Answer Type Questions

1. Enumerate any two commercial barks .



Watch Video Solution

2. What do you understand by the term longitudinal growth ?



Watch Video Solution

3. Distinguish between Intrafascicular cambium and Interfascicular cambium.



Watch Video Solution

4. Write notes on storied cambium.



Watch Video Solution

5. How pseudo -annual rings are formed ?



Watch Video Solution

6. What are the differences between spring wood and Autumn wood ?



Watch Video Solution

7. Classify and explain the types of angiospermic woods based on diameter of xylem vessels .



Watch Video Solution

8. Differentiate between diffuse porous wood and ring porous wood .



Watch Video Solution

9. Give an account on Phellogen .



Watch Video Solution

10. Define the term Rhytidome .



Watch Video Solution

11. Compare ring barks with scale barks .



Watch Video Solution

12. Enumerate the beneficial aspects of bark .



Watch Video Solution

13. Draw and label the structure of lenticel .

(ii) Draw the C.S of Wood showing annual ring

.



Watch Video Solution

Additional Questions Solved Long Answer Type Questions

1. Differentiate between secondary growth in dicot stem and root .



Watch Video Solution

2. Depict the tissue lineage during secondary growth in dicot stem and root .



Watch Video Solution

3. List the differences between Vascular cambium and Cord Cambium



Watch Video Solution

4. Differentiate Phellem and Phelloderm.



Watch Video Solution

5. Bring out the differences between sap wood and heart wood



[Watch Video Solution](#)

6. Why the study of Growth rings is significant ?



[Watch Video Solution](#)

Higher Order Thinking Skills Hots

1. What do heart wood and sap wood stand for ?



Watch Video Solution

2. Arrange the following in the sequence you would find them in a plant starting from periphery - Phellem , Phellogen , phelloderm .



Watch Video Solution

3. A transverse section of the trunk of a tree shows concentric rings which are known as growth rings . How are these rings formed ?
What are the significance of these rings ?



Watch Video Solution

4. If one debarks a tree , what parts of the plants is being removed ?



Watch Video Solution

5. Given below are list of commercial products obtained from plants . Mention the parts of plant which is used to obtained them .

(a) Rubber (b) Cinnamon (c) Turpentine



Watch Video Solution