

BIOLOGY

BOOKS - FULL MARKS BIOLOGY (TAMIL ENGLISH)

ORGAN SYSTEMS IN ANIMALS

Exercise Choose The Correct Answer

1. Which of the following is not a salivary gland ?

- A. Sublingual
- B. Lachrymal
- C. Submaxillary
- D. Parotid

Answer: B



Watch Video Solution

2. Stomach of human beings mainly digests.....

A. Carbohydrates

B. Proteins

C. Fat

D. Sucrose

Answer: B



Watch Video Solution

3. To prevent the entry of food into the trachea, the opening is guarded by.....

- A. Epiglottis
- B. Glottis
- C. Hard palate
- D. Soft palate

Answer: A

 [Watch Video Solution](#)

4. Bile helps in the digestion of.....

- A. Proteins

B. Sugar

C. Fats

D. Carbohydrates

Answer: C



Watch Video Solution

5. The structural and functional unit of the kidney is.....

A. Villi

B. Liver

C. Nephron

D. Ureter

Answer: C



Watch Video Solution

6. Which one of the following substance is not a constituent of sweat ?

A. Urea

B. Protein

C. Water

D. Salt

Answer: B



Watch Video Solution

7. The common passage meant for transporting urine and sperms in male is.....

A. Ureter

B. Urethra

C. Vas deferens

D. Scrotum

Answer: B



[Watch Video Solution](#)

8. Which of the following is not a part of female reproductive system ?

A. Ovary

B. Uterus

C. Testis

D. fallopian tube

Answer: C

 [Watch Video Solution](#)

Exercise Fill In The Blanks

1. The opening of the stomach into the intestine is called

.....

 [Watch Video Solution](#)

2. The muscular and sensory organ which helps in mixing the food with saliva is

 [Watch Video Solution](#)

3. Bile, secreted by liver is stored temporarily in.....

 [Watch Video Solution](#)

4. The longest part of alimentary canal is.....

 [Watch Video Solution](#)

5. The human body functions normally at a temperature of about.....

 [Watch Video Solution](#)

6. The largest cell in the human body of a female is.....

 [Watch Video Solution](#)

Exercise True Or False

1. Nitric acid in the stomach kills microorganisms in the food.

 [Watch Video Solution](#)

2. During digestion, proteins are broken down into amino acids.



[Watch Video Solution](#)

3. Glomerular filtrate consists of many substances like amino acids, vitamins, hormones, glucose and other essential substances.



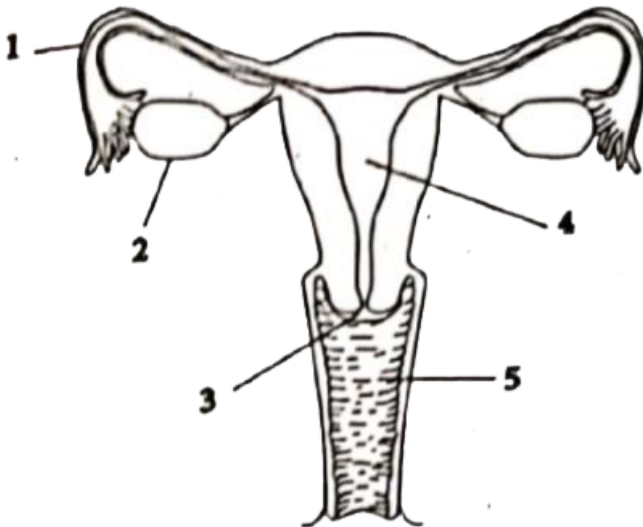
[Watch Video Solution](#)

Exercise Match The Following

	Organ	Elimination
1.	Skin	<i>a.</i> Urine
1. 2.	Lungs	<i>b.</i> Sweat
3.	Intestine	<i>c.</i> Carbon dioxide
4.	Kidneys	<i>d.</i> Undigested food

 [Watch Video Solution](#)

2. Match the parts of the given figure with the correct option.



	1	2	3	4	5
a.	Fallopian tube	Oviduct	Uterus	Cervix	Vagina
b.	Oviduct	Cervix	Vagina	Ovary	Vas deferens
c.	Ovary	Oviduct	Uterus	Vagina	Cervix
d.	Fallopian tube	Ovary	Cervix	Uterus	Vagina



[Watch Video Solution](#)

Exercise Differentiate The Following Terms

1. a. Excretion and Secretion
- b. Absorption and Assimilation
- c. Ingestion and Egestion
- d. Diphyodont and Heterodont
- e. Incisors and Canines



[Watch Video Solution](#)

Exercise Answer Briefly

1. How is the small intestine designed to absorb digested food ?

 [Watch Video Solution](#)

2. Why do we sweat ?

 [Watch Video Solution](#)

3. Mention any two vital functions of human kidney.

 [Watch Video Solution](#)

4. What is Micturition?



[Watch Video Solution](#)

5. Name the types of teeth present in an adult human being. Mention the functions of each.



[Watch Video Solution](#)

6. Explain the structure of nephron.



[Watch Video Solution](#)

[Exercise Answer In Detail](#)

1. Describe the alimentary canal of man.



[Watch Video Solution](#)

2. Explain the structure of kidney and the steps involved in the formation of urine.



[Watch Video Solution](#)

Exercise Assertion And Reason

1. Assertion : Urea is excreted out through the kidneys

Reason : Urea is a toxic substance.

- A. If both Assertion and Reason are true and Reason is the correct explanation of Assertion
- B. If both Assertion and Reason are true but Reason is not the correct explanation of Assertion
- C. If Assertion is true but Reason is false
- D. If both Assertion and Reason are false

Answer: A

 [Watch Video Solution](#)

2. Assertion : In both the sexes gonads perform dual function

Reason : Gonads are also called primary sex organs

- A. If both Assertion and Reason are true and Reason is the correct explanation of Assertion
- B. If both Assertion and Reason are true but Reason is not the correct explanation of Assertion
- C. If Assertion is true but Reason is false
- D. If both Assertion and Reason are false

Answer: A



Watch Video Solution

Exercise Higher Order Thinking Skills

1. If pepsin is lacking in gastric juice, then which event in the stomach will be affected ?

- a. Digestion of starch into sugars.
- b. Breaking of proteins into peptides.
- c. Digestion of nucleic acids.
- d. Breaking of fats into glycerols and fatty acids.



[Watch Video Solution](#)

2. Name the blood vessel that (a) enter malphigian capsule and (b) leaves malphigian capsule.



[Watch Video Solution](#)

3. Why do you think that urine analysis is an important part of medical diagnosis ?

 [Watch Video Solution](#)

4. Why your doctor advises you to drink plenty of water ?

 [Watch Video Solution](#)

5. Can you guess why there are sweat glands on the palm of our hands and the soles of our feet ?

 [Watch Video Solution](#)

1. Write the function of the following organ systems :
Muscular system, Endocrine system, Sensory system,
Excretory system.



[Watch Video Solution](#)

2. What are the three stages of urine formation ?



[Watch Video Solution](#)

3. What are the functions of liver ?



[Watch Video Solution](#)

4. Draw the excretory system and label its parts.

 [Watch Video Solution](#)

5. Draw a flow chart showing the route of urine flow.

 [Watch Video Solution](#)

6. What is dialysis or artificial kidney ?

 [Watch Video Solution](#)

7. What is spermatogenesis ?

 [Watch Video Solution](#)

8. Describe the three parts of small intestine.



[Watch Video Solution](#)

Additional Questions Long Answer Questions

1. Tabulate the enzymes secreted by the digestive glands secrete in a human body.



[Watch Video Solution](#)

2. Describe the liver and list out its functions.



[Watch Video Solution](#)

3. are the enzymes involved in the breakdown of fats in the small intestine during the process of digestion .

 [Watch Video Solution](#)

Activity

1. Look at the pictures given below and answer the questions that follow :



1. Are the teeth of animals similar to ours ?
2. How is the shape of their teeth related to their food habit ?



Watch Video Solution