



## BIOLOGY

# BOOKS - FULL MARKS BIOLOGY (TAMIL ENGLISH)

## ORGANIZATION OF TISSUES

**Exercise Choose The Correct Answer**

1. The tissue composed of living thin walled polyhedral cell is \_\_\_\_\_

A. Parenchyma

B. Collenchyma

C. Sclerenchyma

D. None of the above

**Answer: A**



**Watch Video Solution**

2. The fibres consists of \_\_\_\_

A. Parenchyma

B. Sclerenchyma

C. Collenchym

D. None of the above

**Answer: B**



**Watch Video Solution**

**3. Companion cells are closely associated with**

-----

A. sieve elements

B. vessel elements

C. tricchomes

D. guard cells

**Answer: A**



**Watch Video Solution**

**4. Which of the following is a complex tissue?**

A. Parenchyma

B. Collenchyma

C. xylem

D. sclerenchyma

**Answer: C**



**Watch Video Solution**

5. Aerenchyma is found in \_\_\_\_\_

A. epiphytes

B. hydrophytes

C. halophytes

D. xerophytes

**Answer: B**



**Watch Video Solution**

6. Smooth muscles are found in \_\_\_\_\_.

A. uterus

B. artery

C. vein

D. all of the above

**Answer: A**



**Watch Video Solution**

7. Nerve cell does not contain \_\_\_\_\_

A. axon

B. nerve endings

C. tendons

D. dendrites

**Answer: C**



Watch Video Solution

## Exercise Match The Following

### 1. Match the following

S. No.	Column A	S. No.	Column B
1.	Sclereids	<i>a</i>	Chlorenchyma
2.	Chloroplast	<i>b</i>	Sclerenchyma
3.	Simple tissue	<i>c</i>	Collenchyma
4.	Companion cell	<i>d</i>	Xylem
5.	Trachieds	<i>e</i>	Phloem



Watch Video Solution



## Exercise Fill In The Blanks

1. \_\_\_\_\_ tissues provides mechanical support to organs.



[Watch Video Solution](#)

2. Parenchyma, collenchyma, Sclerenchyma are \_\_\_ type of tissue.



[Watch Video Solution](#)

3. \_\_\_\_ and \_\_\_\_\_ are complex tissues.



**Watch Video Solution**

4. Epithelial cells with are found in \_\_\_\_ of our body.



**Watch Video Solution**

5. Lining of small intestine is made up of \_\_\_\_\_



**Watch Video Solution**

## Exercise IV State Whether True Or False If False Write The Correct Statement

1. Epithelial tissue is protective tissue in animal body



[Watch Video Solution](#)

2. Bone and cartilage are two types of areolar connective tissue



[Watch Video Solution](#)

3. Parenchyma is a simple tissue



[Watch Video Solution](#)

4. Phloem is made up of Tracheids



[Watch Video Solution](#)

5. Vessels are found In collenchyma





[Watch Video Solution](#)

## Exercise V Answer Briefly

1. What are intercalary meristems? How do they differ from other meristems?



[Watch Video Solution](#)

2. What is complex tissue? Name the various kinds of complex tissues.



 [Watch Video Solution](#)

3. Mention the most abundant muscular tissue found in our body. State its function.



[Watch Video Solution](#)

4. What is skeletal connective tissue? How is it helpful in the functioning of our body?



[Watch Video Solution](#)

5. Why should gametes be produced by meiosis during sexual reproduction?



**Watch Video Solution**

6. In which stage of mitosis the chromosomes align in an equatorial plate? How?



**Watch Video Solution**

**Exercise Vi Answer In Detail**

1. What are permanent tissues? Describe the different types of simple permanent tissue.



**Watch Video Solution**

2. Write about the elements of Xylem.



**Watch Video Solution**

3. Differentiate between mitosis and meiosis.



**Watch Video Solution**



## Exercise VII Higher Order Thinking Skills

1. What is the consequence that occur if all blood platelets are removed from the blood?



[Watch Video Solution](#)

2. Which are not true cells in the blood ? Why?



[Watch Video Solution](#)

## Additional Question Short Answers Question

1. Name the elements present in phloem.



[Watch Video Solution](#)

2. What is histology?



[Watch Video Solution](#)

3. Describe amitosis.





[Watch Video Solution](#)

4. Give reasons why the meristematic cells have a large nucleus and dense cytoplasm.



[Watch Video Solution](#)

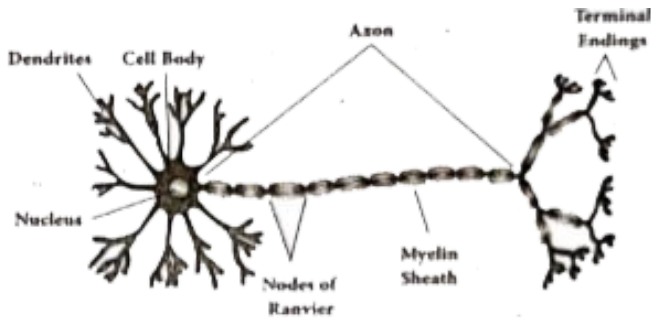
## Additional Question Long Answers Question

1. Give notes on: (i) squamous epithelium, (ii) cuboidal epithelium, (iii) columnar epithelium

(iv) ciliated epithelium and (v) glandular epithelium.

[View Text Solution](#)

2. Write a note on the nervous tissue using a diagram.



[View Text Solution](#)

3. Describe fluid connective tissue.



[Watch Video Solution](#)

4. Differentiate between the following

(a) Sieve cells and Sieve tubes (b) Sclereids and

fibres (c ) Tracheids and vessels (d)

Sclerenchyma and parenchyma



[Watch Video Solution](#)