



PHYSICS

BOOKS - HC VERMA PHYSICS (ENGLISH)

PHOTO ELECTRIC EFFECT AND WAVE PARTICLE DUALITY

Example

1. Consider a parallel beam of light of wavelength 600nm and intensity $100\text{ W } (m^{-2})$. (a) Find the energy and linear momentum of each photon. (b) How many photons cross 1 cm^2 area perpendicular to the beam in one second?

[Watch Video Solution](#)

2. Find the maximum wavelength of light that can cause photoelectric effect in lithium.



Watch Video Solution

3. A point source of monochromatic light of 1.0mW is placed at a distance of 5.0m from a metal surface. Light falls perpendicularly on the surface. Assume wave theory of light to hold and also that all the light falling on the circular area with radius $= 1.0 \times 10^{-9}\text{m}$ (which is few times the diameter of an atom) is absorbed by a single electron on the surface. Calculate the time required by the electron to receive sufficient energy to come out of the metal if the work function of the metal is 2.0eV .



[Watch Video Solution](#)

Work Out

1. How many photons are emitted per second by a 5 m W laser source operating at 632.8nm?



[Watch Video Solution](#)

2. A monochromatic source of light operating at 200W emits 4×10^{20} photons per second. Find the wavelength of the light.



[Watch Video Solution](#)

3. A hydrogen atom moving at a speed v absorbs a photon of wavelength 122 nm and stops. Find the value of v . Mass of a hydrogen atom $= 1.67 \times 10^{-27}\text{ kg}$.



[Watch Video Solution](#)

4. A parallel beam of monochromatic light of wavelength 500 nm is incident normally on a perfectly absorbing surface. The power through any cross-section of the beam is 10 W . Find (a) the number of photons absorbed per second by the surface and (b) the force exerted by the light beam on the surface.



[Watch Video Solution](#)

5. Figure shows a small, plane strip suspended from a fixed support through a string of length l . A continuous beam of monochromatic light is incident horizontally on the strip and is completely absorbed. The energy falling on the strip per unit time is W . (a) Find the deflection of the string from the vertical if the mirror stays in equilibrium. (b) If the strip is deflected slightly from its equilibrium position in the plane of the figure, what will be the time period of the resulting oscillations?



[View Text Solution](#)

6. A point source of light is placed at the centre of curvature of a hemispherical surface. The radius of curvature is r and the inner surface is completely reflecting. Find the force on

the hemisphere due to the light falling on its if the source emits a power W .



[Watch Video Solution](#)

7. A perfectly reflecting solid sphere of radius r is kept in the path of a parallel beam of light of large aperture. If the beam carries an intensity I , find the force exerted by the beam on the sphere.



[View Text Solution](#)

8. Find the threshold wavelengths for photoelectric effect from a copper surface, a sodium surface and a cesium surface. The work functions of these metals are 4.5 eV, 2.3 eV and 1.9 eV respectively.

[Watch Video Solution](#)

9. Ultraviolet light of wavelength 280 nm is used in an experiment on photoelectric effect with lithium ($\phi = 2.5\text{eV}$) cathode. Find (a) the maximum kinetic energy of the photoelectrons and (b) the stopping potential.

[Watch Video Solution](#)

10. In a photoelectric experiment, it was found that the stopping potential decreases from 1.85 V to 0.82 V as the wavelength of the incident light is varied from 300nm to 400nm. Calculate the value of the Planck constant from these data.

[Watch Video Solution](#)

11. A beam of 450 nm light is incident on a metal having work function 2.0 eV and placed in a magnetic field B . The most energetic electrons emitted perpendicular to the field are bent in circular arcs of radius 20 cm. Find the value of B .



Watch Video Solution

12. A monochromatic light of wavelength λ is incident on an isolated metallic sphere of radius a . The threshold wavelength is λ_0 which is larger than λ . Find the number of photoelectrons emitted before the emission of photoelectrons will stop.



Watch Video Solution

13. Light described at a place by the equation

$$E = \left(100 \frac{V}{m}\right) [\sin(5 \times 10^{15} s^{-1})t + \sin(8 \times 10^{15} s^{-1})t]$$

falls on a metal surface having work function 2.0 eV. Calculate the maximum kinetic energy of the photoelectrons.



Watch Video Solution

Objective I

1. Planck constant has the same dimensions as

A. force \times time

B. force \times distance

C. force \times speed

D. force \times distance \times time.

Answer: D



Watch Video Solution

2. Two photons having

- A. equal wavelengths have equal linear momenta
- B. equal energies have equal linear momenta
- C. equal frequencies have equal linear momenta
- D. equal linear momenta have equal wavelengths.

Answer: D



Watch Video Solution

3. Let p and E denote the linear momentum and energy of a photon. If the wavelength is decreased,

- A. both p and E increase
- B. p increases and E decreases
- C. p decreases and E increases
- D. both p and E decrease.

Answer: A



Watch Video Solution

4. Let n_r and n_b be respectively the number of photons emitted by a red bulb and a blue bulb of equal power in a given time.

A. $n_r = n_b$

B. $n_r < n_b$

C. $n_r > n_b$

D. The information is insufficient to get a relation between (n_r) and (n_b) .

Answer: C



Watch Video Solution

5. The equation $E=pc$ is valid

A. for an electron as well as for a photon

B. for an electron but not for a photon

C. for a photon but not for an electron

D. neither for an electron nor for a photon.

Answer: C



Watch Video Solution

6. The work function of a metal is $h\nu_0$. Light of frequency ν falls on this metal. The photoelectric effect will take place only if

A. $\nu \geq (\nu_0)$

B. $\nu > (2\nu_0)$

C. $\nu < (\nu_0)$

D. $\nu < \frac{\nu_0}{2}$.

Answer: A



Watch Video Solution

7. Light of wavelength λ falls on metal having work functions hc/λ_0 . Photoelectric effect will take place only if :

A. $\lambda \geq (\lambda_0)$

B. $\lambda \geq 2\lambda_0$

C. $\lambda \leq \lambda_0$

D. $\lambda < \frac{\lambda_0}{2}$

Answer: C



Watch Video Solution

8. When stopping potential is applied in an experiment on photoelectric effect, no photo current is observed. This means that

- A. the emission of photoelectrons is stopped
- B. the photoelectrons are emitted but are re-absorbed by the emitter metal
- C. the photoelectrons are accumulated near the collector plate
- D. the photoelectrons are dispersed from the sides of the apparatus.

Answer: B



Watch Video Solution

9. If the frequency of light in a photoelectric experiment is doubled the stopping potential will

- A. be doubled
- B. be halved
- C. become more than double
- D. become less than double

Answer: C



Watch Video Solution

10. The frequency and intensity of a light source are both doubled. Consider the following statements

- A. The saturation photocurrent remains almost the same

B. The maximum kinetic energy of the photoelectrons is double

A. Both A and B are true.

B. A is true but B is false.

C. A is false but B is true

D. Both A and B are false.

Answer: B



Watch Video Solution

11. A point source of light is used in a photoelectric effect. If the source is moved farther from the emitted metal, the stopping potential

A. will increase

B. will decrease

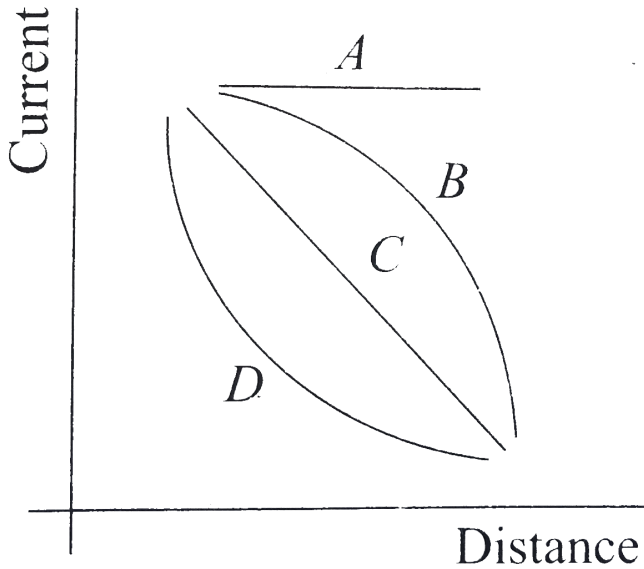
C. will remain constant

D. will either increase or decrease

Answer: C



Watch Video Solution



12.

A point source causes photoelectric effect from a small metal plate. Which of the curves in Fig. may represent the saturation photo-current as a function of the distance between the source and the metal?



Watch Video Solution

13. A non-monochromatic light is used in an experiment on photoelectric effect. The stopping potential

- A. is related to the mean wavelength
- B. is related to the longest wavelength
- C. is related to the shortest wavelength
- D. is not related to the wavelength

Answer: C



Watch Video Solution

14. A proton and an electron are accelerated by the same potential difference, let λ_e and λ_p denote the de-Broglie wavelengths of the electron and the proton respectively

A. $\lambda_e = \lambda_p$

B. $\lambda_e < \lambda_p$

C. $\lambda_e > \lambda_p$

D. The relation between λ_e and λ_p depends on the accelerating potential difference

Answer: C



Watch Video Solution

Objective II

1. When the intensity of a light source is increased

(a) the number of photons emitted by the source in unit time increases

- (b) the total energy of the photons emitted per unit time increases
- (c) more energetic photons are emitted
- (d) faster photons are emitted

A. the number of photons emitted by the source in unit time increases

B. the total energy of the photons emitted per unit time increases

C. more energetic photons are emitted

D. faster photons are emitted

Answer: A::B



Watch Video Solution

2. Photoelectric effect supports quantum nature of light because

(a) there is a minimum frequency of light below which no photo electrons are emitted

(b) the maximum kinetic energy of photo electrons depends only on the frequency of light and not on its intensity

(c) even when the metal surface is faintly illuminated, the photo electrons leave the surface immediately

(d) electric charge of the photo electrons is quantised

A. there is a minimum frequency below which no photoelectrons are emitted

B. the maximum kinetic energy of photoelectrons depends only on the frequency of light and not on its intensity

- C. even when the metal surface is faintly illuminated the photoelectrons leave the surface immediately.
- D. electric charge of the photoelectrons is quantized.

Answer: A::B::C



Watch Video Solution

3. A photon of energy $h\nu$ is absorbed by a free electron of a metal having work function $\phi < h\nu$

- A. the electron is sure to come out.
- B. The electron is sure to come out with a kinetic energy $(h\nu - \phi)$.

C. Either the electron does not come out or it comes out with a kinetic energy $(h\nu - \varphi)$.

D. It may come out with a kinetic energy less than $(h\nu - \varphi)$

Answer: D



Watch Video Solution

4. If the wavelength of light in an experiment on photoelectric effect is doubled,

(i) the photoelectric emission will not take place

(ii) the photoelectric emission may or may not take place

(iii) the stopping potential will increase

(iv) the stopping potential will decrease

- A. the photoelectric emission will not take place
- B. the photoelectrons emission may or may not take place
- C. the stopping potential will increase
- D. the stopping potential will decrease

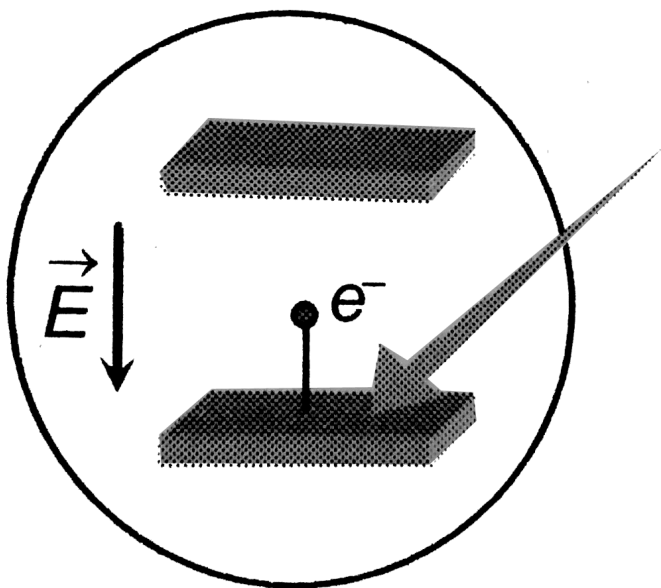
Answer: B::D



Watch Video Solution

5. The collector plate in an experiment on photoelectric effect is kept vertically above the emitter plate . Light source is put on and a saturation photo current is recorded . An electric field is switched on which has a vertically downward direction

. Then



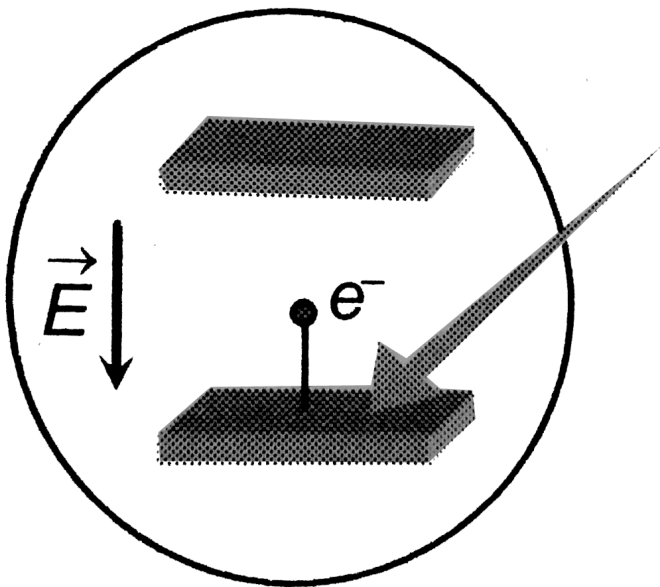
- A. The photocurrent will increased
- B. The kinetic energy of the electrons will increase.
- C. The stopping potential will decrease.
- D. The threshold wavelength will increase.

Answer: A



Watch Video Solution

6. The collector plate in an experiment on photoelectric effect is kept vertically above the emitter plate . Light source is put on and a saturation photo current is recorded . An electric field is switched on which has a vertically downward direction . Then



- A. The photocurrent will increased
- B. The kinetic energy of the electrons will increase.

C. The stopping potential will decrease.

D. The threshold wavelength will increase.

Answer: B



Watch Video Solution

7. In which of the following cases the heavier of the two particles has a smaller de-Broglie wavelength ? The two particles

A. move with the same speed

B. move with the same linear momentum

C. move with the same kinetic energy

D. have fallen through the same height

Answer: A::C::D



Watch Video Solution

Exercise

1. Visible light has wavelengths in the range of 400 nm to 780nm. Calculate the range of energy of the photons of visible light.



Watch Video Solution

2. Calculate the momentum of a photon of light of wavelength 500nm .



Watch Video Solution

3. An atom absorbs a photon of wavelength 500nm and emits another photon of wavelength 700nm . Find the net energy absorbed by the atom in the process.



[Watch Video Solution](#)

4. Calculate the number of photons emitted per second by a 10 W sodium vapour lamp. Assume that 60% of the consumed energy is converted into light. Wavelengths of sodium light $= 590\text{nm}$.



[Watch Video Solution](#)

5. When the sun is directly overhead, the surface of the earth receives $1.4 \times 10^3 \text{ W m}^{-2}$ of sunlight. Assume that the light is monochromatic with average wavelength 500 nm and that no light is absorbed in between the sun and the earth's surface. The distance between the sun and the earth is $1.5 \times 10^{11} \text{ m}$. (a) Calculate the number of photons falling per second on each square metre of earth's surface directly below the sun. (b) How many photons are there in each cubic metre near the earth's surface at any instant? (c) How many photons does the sun emit per second?



Watch Video Solution

6. A parallel beam of monochromatic light of wavelength 663 nm is incident on a totally reflecting plane mirror. The angle

of incidence is 60° and the number of photons striking the mirror per second is 1.0×10^{19} . Calculate the force exerted by the light beam on the mirror.



[Watch Video Solution](#)

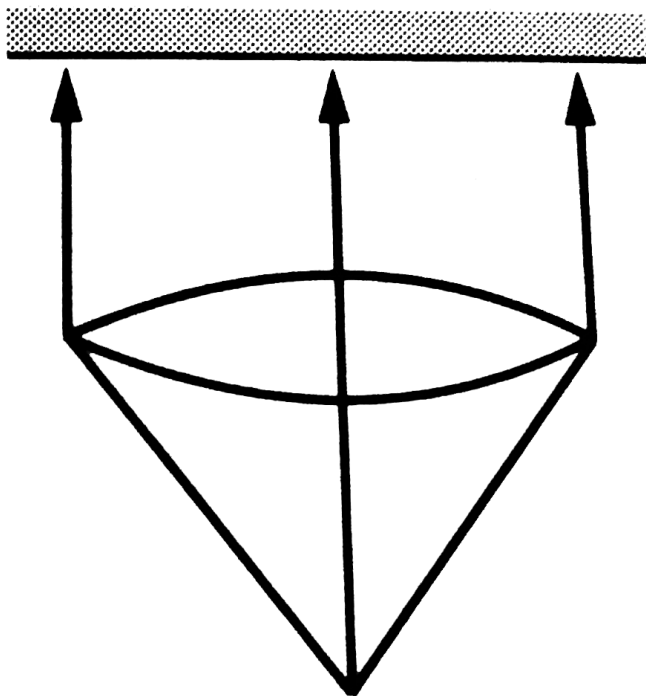
7. A beam of white light is incident normally on a plane surface absorbing (70 %) of the light and reflecting the rest. If the incident beam carries 10 W of power , find the force exerted by it on the surface .



[Watch Video Solution](#)

8. A totally reflecting, small plane mirror placed horizontally faces a parallel beam of light as shown in figure. The mass of the mirror is 20g. Assume that there is no absorption in the

lens and that 30% of the light emitted by the source goes through the lens. Find the power of the source needed to support the weight of the mirror. Take $g = 10\text{ms}^{-2}$.



Watch Video Solution

9. A 100 W light bulb is placed at the centre of a spherical chamber of radius 20cm. Assume that 60% of the energy

supplied to the bulb is converted into light and that the surface of the chamber is perfectly absorbing. Find the pressure exerted by the light on the surface of the chamber.



[Watch Video Solution](#)

10. A sphere of radius 1.00 cm is placed in the path of a parallel beam of light of large aperture. The intensity of the light is 0.50 W cm^{-2} . If the sphere completely absorbs the radiation falling on it, find the force exerted by the light beam on the sphere.



[Watch Video Solution](#)

11. Consider the situation described in the previous problem. Show that the force on the sphere due to the light falling on

it is the same even if the sphere is not perfectly absorbing.



Watch Video Solution

12. It is not possible for a photon to be completely absorbed by a free electron. Explain.



Watch Video Solution

13. Two neutral particles are kept 1m apart. Suppose by some mechanism some charge is transferred from one particle to the other and the electric potential energy lost is completely converted into a photon. Calculate the longest and the next smaller wavelength of the photon possible.

$$h = 6.63 \times 10^{-34} Js.$$



Watch Video Solution

[Watch Video Solution](#)

14. Find the maximum kinetic energy of the photoelectrons ejected when light of wavelength 350nm is incident on a cesium surface. Work function of cesium = $1.9eV$.

[Watch Video Solution](#)

15. The work function of a metal is $2.5 \times 10^{-19} J$. (a) Find the threshold frequency for photoelectric emission. (b) If the metal is exposed to a light beam of frequency $6.0 \times 10^{14} \text{ Hz}$, what will be the stopping potential ?

[Watch Video Solution](#)

16. The work function of a photoelectric material is 4.0 eV . (a) What is the threshold wavelength? (b) find the wavelength of light for which the stopping potential is 2.5 V .



Watch Video Solution

17. Find the maximum magnitude of the linear momentum of a photoelectron emitted when light of wavelength 400 nm falls on a metal having work function 2.5 eV .



Watch Video Solution

18. When a metal plate is exposed to a monochromatic beam of light of wavelength 400 nm , a negative potential of 1.1 V is

needed to stop the photocurrent . Find the threshold wavelength for the metal.



[Watch Video Solution](#)

19. In an experiment on photoelectric effect, the stopping potential is measured for monochromatic light beams corresponding to different wavelength. The data collected are as follows:

wavelength (nm): 350 400 450 500 550

stopping potential (V): 1.45 1.00 0.66 0.38 0.16

Plot the stopping potential against inverse of wavelength on a graph paper and find (a) the Planck constant, (b) the work function of the emitter and (c) the threshold wavelength .



[Watch Video Solution](#)

20. The electric field associated with a monochromatic beam of light becomes zero, 1.2×10^{15} times per second. Find the maximum kinetic energy of the photoelectrons when this light falls on a metal surface whose work function is 2.0eV, $h = 6.63 \times 10^{-34} Js$.



Watch Video Solution

21. The electric field associated with a light wave is given by $E = E_0 \sin[(1.57 \times 10^7 m^{-1}(x - ct)]$. Find the stopping potential when this light is used in an experiment on photoelectric effect with a metal having work - function 1.9 eV.



Watch Video Solution

22. The electric field at a point associated with a light wave is

$$E = 100 \text{ V m}^{-1} \sin[(3.0 \times 10^{15} \text{ s}^{-1})t] \sin[(6.0 \times 10^{15} \text{ s}^{-1})t].$$

If this light falls on a metal surface having a work function of 2.0 eV , what will be the maximum kinetic energy of the photoelectrons?



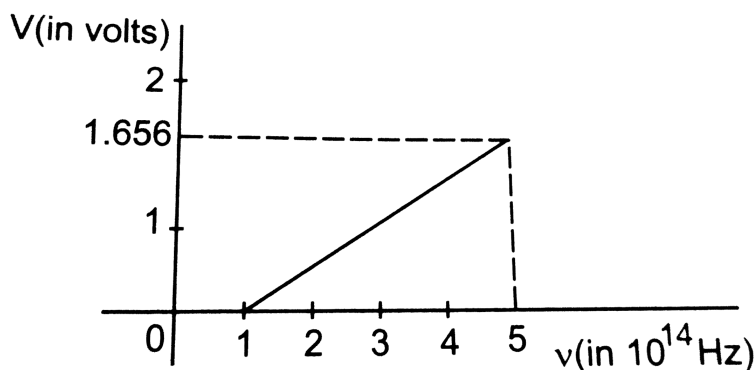
[Watch Video Solution](#)

23. A monochromatic light source of intensity 5 mW emits (8×10^{15}) photons per second. This light ejects photoelectrons from a metal surface. The stopping potential for this setup is 2.0 V . Calculate the work function of the metal.



[Watch Video Solution](#)

24. Figure is the plot of the stopping potential versus the frequency of the light used in an experiment on photoelectric effect. Find (a) the ratio h/e and (b) the work function.



Watch Video Solution

25. A photographic film is coated with a silver bromide layer. When light falls on this film, silver bromide molecules dissociate and the film records the light there. A minimum of 0.6 eV is needed to dissociate a silver bromide molecule. Find

the maximum wavelength of light that can be recorded by the film.



[Watch Video Solution](#)

26. In an experiment on photoelectric effect light of wavelength $400nm$ is incident on a metal plate at rate of $5W$. The potential of the collector plate is made sufficiently positive with respect to emitter so that the current reaches the saturation value. Assuming that on the average one out of every 10^6 photons is able to eject a photoelectron, find the photocurrent in the circuit.



[Watch Video Solution](#)

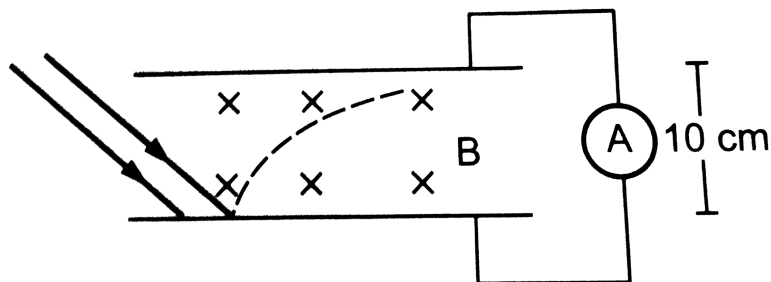
27. A silver ball of radius 4.8 cm is suspended by a thread in a vacuum chamber, Ultraviolet light of wavelength 200nm is incident on the ball for some time during which a total light energy of 1.0×10^{-7} J falls on the surface. Assuming that on the average one photon out of every ten thousand is able to eject a photoelectron, find the electric potential at the surface of the ball assuming zero potential at infinity. What is the potential at the centre of the ball?



Watch Video Solution

28. In an experiment on photoelectric effect, the emitter and the collector plates are placed at a separation of 10cm and are connected through an ammeter without any cell. A magnetic field B exists parallel to the plates. The work

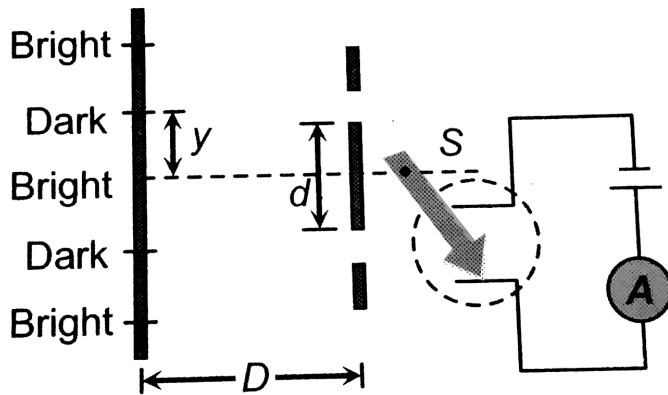
function of the emitter is 2.39 eV and the light incident on it has wavelengths between 400nm and 600nm . Find the minimum value of B for which the current registered by the ammeter is zero. Neglect any effect of space charge.



Watch Video Solution

29. In the following arrangement $y = 1.0\text{mm}$, $d = 0.24\text{mm}$ and $D = 1.2\text{m}$. The work function of the material of the emitter is 2.2eV . The stopping potential V needed to stop

the photo current will be



Watch Video Solution

30. In a photoelectric experiment, the collector plate is at 2.0 V with respect to the emitter plate made of copper $\phi = 4.5$. The emitter is illuminated by a source of monochromatic light of wavelength 200nm. Find the minimum and maximum kinetic energy of the photoelectrons reaching the collector.



Watch Video Solution

31. A small piece of cesium metal $\phi = 1.9\text{eV}$ is kept at a distance of 20 cm from a large metal plate having a charge density of $1.0 \times 10^{-9}\text{Cm}^{-2}$ on the surface facing the cesium piece. A monochromatic light of wavelength 400nm is incident on the cesium piece. Find the minimum and the maximum kinetic energy of the photoelectrons reaching the large metal plate. Neglect any change in electric field due to the small piece of cesium present.



Watch Video Solution

32. Consider the situation of the previous problem. Consider the fastest electron emitted parallel to the large metal plate. Find the displacement of this electron parallel to its initial velocity before it strikes the large metal plate.

[Watch Video Solution](#)

33. A horizontal cesium plate ($\phi = 1.9\text{eV}$) is moved vertically downward at a constant speed v in a room full of radiation of wavelength 250nm and above. What should be the minimum value of v so that the vertically upward component of velocity is nonpositive for each photoelectron?

[Watch Video Solution](#)

34. A small metal plate of work function ϕ is kept at a distance r from a singly ionised, fixed ion. A monochromatic light beam is incident on the metal plate and photoelectrons are emitted. Find maximum wavelength of the light beam so

that some of that electrons may go round the ion along a circle.



Watch Video Solution

35. A light beam of wavelength $400nm$ is incident on a metal of work- function $2.2eV$. A particular electron absorbs a photon and makes 2 collisions before coming out of the metal

(a) Assuming that 10% of existing energy is lost to the metal in each collision find the final kinetic energy of this electron as it comes out of the metal.

(b) Under the same assumptions find the maximum number of collisions, the electron should suffer before it becomes unable to come out of the metal.



Watch Video Solution

Question For Short Answer

1. Can we find the mass of a photon by the definition $p = mv$?



Watch Video Solution

2. Is it always true that for two sources of equal intensity, the number of photons emitted in a given time are equal?



Watch Video Solution

3. What is the speed of a photon with respect to another photon if (a) the two photons are going in the same direction

and (b) they are going in opposite directions?



[Watch Video Solution](#)

4. Can a photon be deflected by an electric field ? By a magnetic field ?



[Watch Video Solution](#)

5. A hot body is placed in a closed room maintained at a lower temperature. Is the number of photons in the room increasing?



[Watch Video Solution](#)

6. Should the energy of a photon be called its kinetic energy or its internal energy?



Watch Video Solution

7. In an experiment on photoelectric effect, a photon is incident on an electron from one direction and the photoelectron is emitted almost in the opposite direction. Does this violate conservation of momentum ?



Watch Video Solution

8. It is found that yellow light does not eject photoelectrons from a metal. Is it advisable to try with orange light? With green light?



[Watch Video Solution](#)

9. It is found that photosynthesis starts in certain plants when exposed to the sunlight but it does not start if the plant is exposed only to infrared light. Explain.



[Watch Video Solution](#)

10. The threshold wavelength of a metal is (λ_0). Light of wavelength slightly less than λ_0 is incident on an insulated plate made of this metal. It is found that photoelectrons are emitted for sometimes and after that the emission stops. Explain.



[Watch Video Solution](#)

11. Is $p = \frac{E}{c}$ valid for electrons?



Watch Video Solution

12. Consider the de Broglie wavelength of an electron and a proton. Which wavelength is smaller if the two particles have (a) the same speed (b) the same momentum (c) the same energy?



Watch Video Solution

13. If an electron has a wavelength, does it also have a colour?



Watch Video Solution