



PHYSICS

NCERT - NCERT PHYSICS(TELUGU)

SYSTEMS OF PARTICLES AND ROTATIONAL MOTION

Example

1. Find the centre of mass of three particles at the vertices of an equilateral triangle. The

masses of the particles are 100g, 150g and 200g respectively. Each side of the equilateral triangle is 0.5 m long, 100g mass is at origin and 150g mass is on the X-axis.



[Watch Video Solution](#)

2. Find the centre of mass of a triangular lamina.



[Watch Video Solution](#)

3. Find the centre of mass of a uniform L-shaped lamina (a thin flat plate) with dimensions as shown. The mass of the lamina is 3 kg.



[Watch Video Solution](#)

4. Find the scalar and vector products of two vectors.

$$a = (3\hat{i} - 4\hat{j} + 5\hat{k}) \text{ and } b = (-2\hat{i} + \hat{j} - 3\hat{k})$$



[Watch Video Solution](#)

5. Find the torque of a force $7\vec{i} + 3\vec{j} - 5\vec{k}$ about the origin. The force acts on a particle whose position vector is $\vec{i} - \vec{j} + \vec{k}$.



[Watch Video Solution](#)

6. Show that the angular momentum about any point of a single particle moving with constant velocity remains constant throughout the motion.



[Watch Video Solution](#)

7. Show that moment of a couple does not depend on the point about which you take the moments.



[Watch Video Solution](#)

8. A metal bar 70 cm long and 4.00 kg in mass supported on two knife-edges placed 10 cm from each end. A 6.00 kg load is suspended at 30 cm from one end. Find the reactions at the

knife- edges. (Assume the bar to be of uniform cross section and homogeneous.)



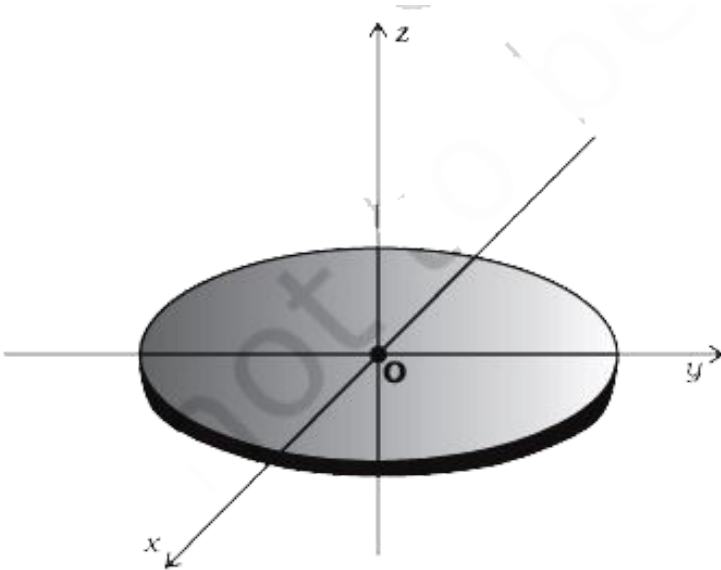
[Watch Video Solution](#)

9. A 3m long ladder weighing 20 kg leans on a frictionless wall. Its feet rest on the floor 1 m from the wall as shown in Fig.7.27. Find the reaction forces of the wall and the floor.



[Watch Video Solution](#)

10. What is the moment of inertia of a disc about one of its diameters?



[Watch Video Solution](#)

11. What is the moment of Inertia of a rod of mass M and length L about an axis perpendicular to it and passing through one end?



Watch Video Solution

12. What is the moment of inertia of a ring about a tangent to the circle of the ring?



Watch Video Solution

13. Obtain Eq. (7.38) from first principles.



[View Text Solution](#)

14. The angular speed of a motor wheel is increased from 1200 rpm to 3120 rpm in 16 seconds. (i) What is its angular acceleration, assuming the acceleration to be uniform? (ii) How many revolutions does the engine make during this time?



[Watch Video Solution](#)

15. A cord of negligible mass is wound round the rim of a fly wheel of mass 20 kg and radius 20 cm. A steady pull of 25 N is applied on the cord as shown in Fig. 7.35. The flywheel is mounted on a horizontal axle with frictionless bearings.

(a) Compute the angular acceleration of the wheel.

(b) Find the work done by the pull, when 2m of the cord is unwound.

(c) Find also the kinetic energy of the wheel at this point. Assume that the wheel starts from

rest.

(d) Compare answers to parts (b) and (c).



[Watch Video Solution](#)

16. Three bodies, a ring, a solid cylinder and a solid sphere roll down the same inclined plane without slipping. They start from rest. The radii of the bodies are identical. Which of the bodies reaches the ground with maximum velocity?



[Watch Video Solution](#)

Exercises

1. Give the location of the centre of mass of a (i) sphere, (ii) cylinder, (iii) ring, and (iv) cube, each of uniform mass density. Does the centre of mass of a body necessarily lie inside the body ?



[Watch Video Solution](#)

2. In the HCl molecule, the separation between the nuclei of the two atoms is about 1.27\AA ($1\text{\AA} = 10^{-10}m$). Find the approximate location of the CM of the molecule, given that a chlorine atom is about 35.5 times as massive as a hydrogen atom and nearly all the mass of an atom is concentrated in its nucleus.



Watch Video Solution

3. A child sits stationary at one end of a long trolley moving uniformly with a speed V on a smooth horizontal floor. If the child gets up and runs about on the trolley in any manner, what is the speed of the CM of the (trolley + child) system ?



[Watch Video Solution](#)

4. Find the components along the x , y , z axes of the angular momentum l of a particle,

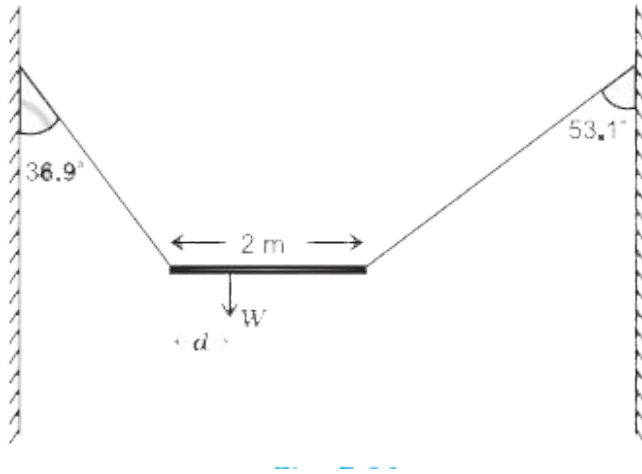
whose position vector is r with components x , y , z and momentum is p with components p_x , p_y and p_z . Show that if the particle moves only in the x - y plane the angular momentum has only a z -component.



[View Text Solution](#)

5. A non-uniform bar of weight W is suspended at rest by two strings of negligible weight as shown in Fig.7.39. The angles made by the strings with the vertical are 36.9° and 53.1°

respectively. The bar is 2 m long. Calculate the distance d of the centre of gravity of the bar from its left end.



[Watch Video Solution](#)

6. A car weighs 1800 kg. The distance between its front and back axles is 1.8 m. Its centre of

gravity is 1.05 m behind the front axle. Determine the force exerted by the level ground on each front wheel and each back wheel.



[Watch Video Solution](#)

7. (a) Find the moment of inertia of a sphere about a tangent to the sphere, given the moment of inertia of the sphere about any of its diameters to be $\frac{2MR^2}{5}$, where M is the mass of the sphere and R is the radius of the

sphere.

(b) Given the moment of inertia of a disc of mass M and radius R about any of its diameters to be $MR^2/4$, find its moment of inertia about an axis normal to the disc and passing through a point on its edge.



[Watch Video Solution](#)

8. Torques of equal magnitude are applied to a hollow cylinder and a solid sphere, both having the same mass and radius. The cylinder

is free to rotate about its standard axis of symmetry, and the sphere is free to rotate about an axis passing through its centre. Which of the two will acquire a greater angular speed after a given time.



[Watch Video Solution](#)

9. A solid cylinder of mass 20 kg rotates about its axis with angular speed 100 rad s^{-1} . The radius of the cylinder is 0.25 m. What is the kinetic energy associated with the rotation of

the cylinder? What is the magnitude of angular momentum of the cylinder about its axis?



[Watch Video Solution](#)

10. (a) A child stands at the centre of a turntable with his two arms outstretched. The turntable is set rotating with an angular speed of 40 rev/min. How much is the angular speed of the child if he folds his hands back and thereby reduces his moment of inertia to

$\frac{2}{5}$ times the initial value ? Assume that the turntable rotates without friction.

(b) Show that the child's new kinetic energy of rotation is more than the initial kinetic energy of rotation. How do you account for this increase in kinetic energy?



[Watch Video Solution](#)

11. A rope of negligible mass is wound round a hollow cylinder of mass 3 kg and radius 40 cm. What is the angular acceleration of the

cylinder if the rope is pulled with a force of 30 N. ? What is the linear acceleration of the rope ? Assume that there is no slipping.



[Watch Video Solution](#)

12. To maintain a rotor at a uniform angular speed of 200 rad s^{-1} an engine needs to transmit a torque of 180 Nm. What is the power required by the engine ? (Note : uniform angular velocity in the absence of friction implies zero torque. In practice,

applied torque is needed to counter frictional torque). Assume that the engine is 100% efficient.



[Watch Video Solution](#)

13. From a uniform disk of radius R , a circular hole of radius $R/2$ is cut out. The centre of the hole is at $R/2$ from the centre of the original disc. Locate the centre of gravity of the resulting flat body.



[Watch Video Solution](#)

14. A metre stick is balanced on a knife edge at its centre. When two coins, each of mass 5g are put one on top of the other at the 12.0 cm mark, the stick is found to be balanced at 45.0 cm. What is the mass of the metre stick?



Watch Video Solution

15. A solid sphere rolls down two different inclined planes of the same heights but different angles of inclination. (a) Will it reach

the bottom with the same speed in each case?

(b) Will it take longer to roll down one plane than the other? (c) If so, which one and why?



[Watch Video Solution](#)

16. A hoop of radius 2 m weighs 100 kg. It rolls along a horizontal floor so that its centre of mass has a speed of 20 cm/s. How much work has to be done to stop it?



[Watch Video Solution](#)

17. The oxygen molecule has a mass of $5.30 \times 10^{-26} \text{ kg}$ and a moment of inertia of $1.94 \times 10^{-46} \text{ kgm}^2$ about an axis through its centre perpendicular to the lines joining the two atoms. Suppose the mean speed of such a molecule in a gas is 500 m/s and that its kinetic energy of rotation is two thirds of its kinetic energy of translation. Find the average angular velocity of the molecule.



Watch Video Solution

18. A solid cylinder rolls up an inclined plane of angle of inclination 30° . At the bottom of the inclined plane the centre of mass of the cylinder has a speed of 5 m/s.

(a) How far will the cylinder go up the plane?

(b) How long will it take to return to the bottom?



Watch Video Solution

19. As shown in Fig.7.40, the two sides of a step ladder BA and CA are 1.6 m long and hinged at A. A rope DE, 0.5 m is tied half way up. A weight 40 kg is suspended from a point F, 1.2 m from B along the ladder BA. Assuming the floor to be frictionless and neglecting the weight of the ladder, find the tension in the rope and forces exerted by the floor on the ladder. (Take $g = 9.8 \text{ m/s}^2$)



View Text Solution

20. A man stands on a rotating platform, with his arms stretched horizontally holding a 5 kg weight in each hand. The angular speed of the platform is 30 revolutions per minute. The man then brings his arms close to his body with the distance of each weight from the axis changing from 90cm to 20cm. The moment of inertia of the man together with the platform may be taken to be constant and equal to 7.6kgm^2 .

(a) What is his new angular speed? (Neglect friction.)

(b) Is kinetic energy conserved in the process?

If not, from where does the change come about?



[Watch Video Solution](#)

21. A bullet of mass 10 g and speed 500 m/s is fired into a door and gets embedded exactly at the centre of the door. The door is 1.0 m wide and weighs 12 kg. It is hinged at one end and rotates about a vertical axis practically without friction. Find the angular speed of the door just after the bullet embeds into it.



22. Two discs of moments of inertia I_1 and I_2 about their respective axes (normal to the disc and passing through the centre), and rotating with angular speeds ω_1 and ω_2 are brought into contact face to face with their axes of rotation coincident. (a) What is the angular speed of the two-disc system? (b) Show that the kinetic energy of the combined system is less than the sum of the initial kinetic energies

of the two discs. How do you account for this loss in energy? Take $\omega_1 \neq \omega_2$



Watch Video Solution

23. (a) Prove the theorem of perpendicular axes.

(b) Prove the theorem of parallel axes.



View Text Solution

24. Prove the result that the velocity v of translation of a rolling body (like a ring, disc, cylinder or sphere) at the bottom of an inclined plane of a height h is given by

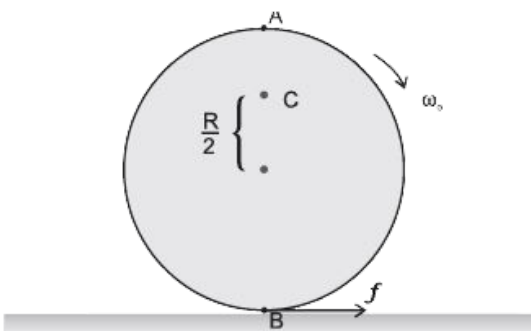
$$v^2 = \frac{2gh}{(1 + k^2 / R^2)}$$

using dynamical consideration (i.e. by consideration of forces and torques). Note k is the radius of gyration of the body about its symmetry axis, and R is the radius of the body. The body starts from rest at the top of the plane.



Watch Video Solution

25. A disc rotating about its axis with angular speed ω_0 is placed lightly (without any translational push) on a perfectly frictionless table. The radius of the disc is R . What are the linear velocities of the points A, B and C on the disc shown in Fig. 7.41? Will the disc roll in the direction indicated?





[Watch Video Solution](#)

26. Explain why friction is necessary to make the disc in Fig. 7.41 roll in the direction indicated.

(a) Give the direction of frictional force at B, and the sense of frictional torque, before perfect rolling begins.

(b) What is the force of friction after perfect rolling begins ?



[Watch Video Solution](#)

27. A solid disc and a ring, both of radius 10 cm are placed on a horizontal table simultaneously, with initial angular speed equal to $10\pi \text{ rad s}^{-1}$. Which of the two will start to roll earlier? The co-efficient of kinetic friction is $\mu_k = 0.2$.



Watch Video Solution

28. A cylinder of mass 10 kg and radius 15 cm is rolling perfectly on a plane of inclination 30° .

The co-efficient of static friction $\mu_s = 0.25$.

(a) How much is the force of friction acting on the cylinder ?

(b) What is the work done against friction during rolling ?

(c) If the inclination θ of the plane is increased, at what value of θ does the cylinder begin to skid, and not roll perfectly ?



Watch Video Solution

29. Separation of Motion of a system of particles into motion of the centre of mass and motion about the centre of mass :

(a) Show $p = p_i' + m_i V$

where p_i is the momentum of the i th particle (of mass m_i) and $p_i' = m_i v_i'$. Note v_i' is the velocity of the i th particle relative to the centre of mass.

Also, prove using the definition of the centre

of mass $\sum p_i' = 0$

(b) Show $K = K' + 1/2MV^2$

where K is the total kinetic energy of the

system of particles, K' is the total kinetic energy of the system when the particle velocities are taken with respect to the centre of mass and $MV^2/2$ is the kinetic energy of the translation of the system as a whole (i.e. of the centre of mass motion of the system). The result has been used in Sec. 7.14.

(c) Show $L = L' + R \times MV$

where $L' = \sum r'_i \times p'_i$ is the angular momentum of the system about the centre of mass with velocities taken relative to the centre of mass. Remember - $r'_i = r_i - R$, rest of the notation is the standard notation

used in the chapter. Note L and $MR \times V$ can be said to be angular momenta, respectively, about and of the centre of mass of the system of particles.

(d) Show
$$\frac{dL'}{dt} = \sum r'_i \times \frac{dp'}{dt}$$

Further, show that

$$\frac{dL'}{dt} = \tau'_{ext}$$

where τ'_{ext} is the sum of all external torques acting on the system about the centre of mass.



View Text Solution

Exercises True Or False

1. During rolling, the force of friction acts in the same direction as the direction of motion of the CM of the body.



[Watch Video Solution](#)

2. The instantaneous speed of the point of contact during rolling is zero.



[Watch Video Solution](#)

3. The instantaneous acceleration of the point of contact during rolling is zero.



[Watch Video Solution](#)

4. For perfect rolling motion, work done against friction is zero.



[Watch Video Solution](#)

5. A wheel moving down a perfectly frictionless inclined plane will undergo slipping (not rolling) motion.



[Watch Video Solution](#)