



# BIOLOGY

## BOOKS - CBSE COMPLEMENTARY MATERIAL BIOLOGY (HINGLISH)

### BIODIVERSITY AND CONSERVATION

#### Very Short Answer

1. Habitat loss and fragmentation has caused severe damage to a particular type of

ecosystem. Name it.



[View Text Solution](#)

2. What trend is observed in respect of species diversity when we move from equator to poles ?



[Watch Video Solution](#)

3. Which region is considered as the one with highest biodiversity on earth? What is the

name given to such region forests ?



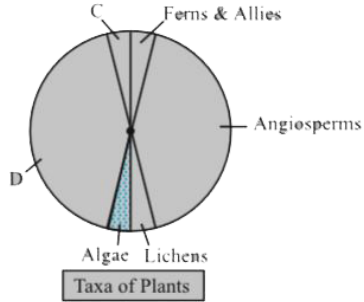
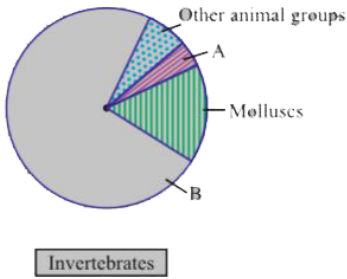
[Watch Video Solution](#)

## Short Answer I

1. Study the pie-diagram and answer the questions which follows:

What do A, B, C and D represent in these

diagrams.



 [View Text Solution](#)

## Short Answer li

1. Hot spots are the regions of exceptionally high biodiversity. But they have become regions of accidental habitat loss too. Name

the three hotspots of our country. Why are they called 'biodiversity hotspots' ?



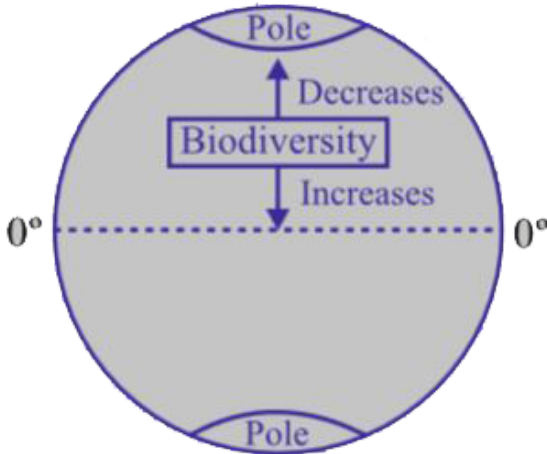
[View Text Solution](#)

2. Study the diagram of the earth given below.

Give the name of the pattern of biodiversity

therein. Suggest any two reasons for this type

of occurrence.



[Watch Video Solution](#)

3. What is special about tropics that might account for their greater biological diversity ?



[Watch Video Solution](#)

## Long Answer

1. Describe at least two approaches each for ex-situ conservation and in situ conservation as a strategy for biodiversity conservation.



[View Text Solution](#)