



BIOLOGY

BOOKS - CBSE COMPLEMENTARY MATERIAL BIOLOGY (HINGLISH)

HUMAN REPRODUCTION

Questions Vsa

1. Failure of testes to descend into Scrotal sacs leads to sterility. Why?



[View Text Solution](#)

2. How many sperms will be produced from 10 primary spermatocytes and how many eggs will be produced from 10 primary oocytes ?



[View Text Solution](#)

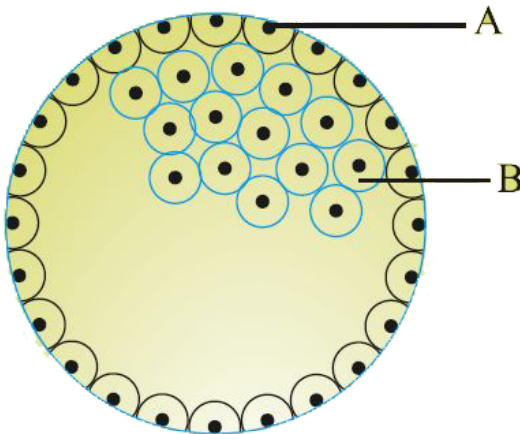
3. In ovary which structure transforms as corpus luteum and name the hormone secreted by corpus luteum ?



[View Text Solution](#)

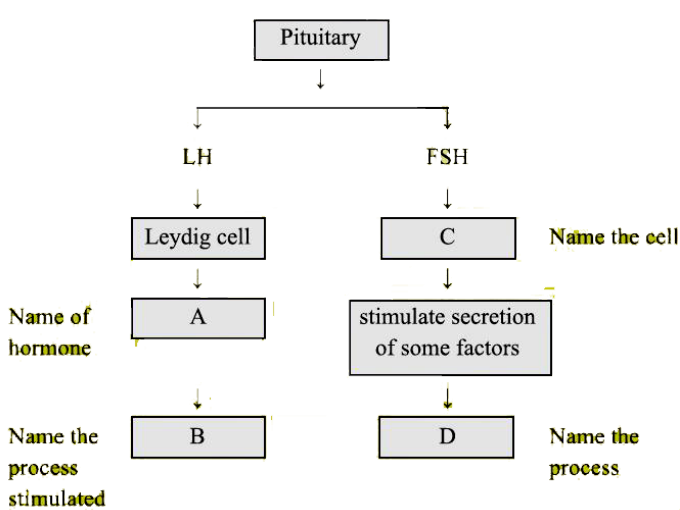
Questions Sa I

1. In the given figure, give the name and functions of parts labelled A and B.



[View Text Solution](#)

2. Given below is an incomplete flow chart showing influence of hormone on gametogenesis in male, observe the flow chart carefully and fill in the blank A, B, C and D.



[View Text Solution](#)

3. Give reason for the following:

The first half of the menstrual cycle is called follicular phase as well as proliferative phase.



View Text Solution

4. Give reason for the following: The second half of the menstrual cycle is called luteal phase as well as secretory phase.



View Text Solution

5. What is meant by L.H. Surge ? Write the role of L.H.

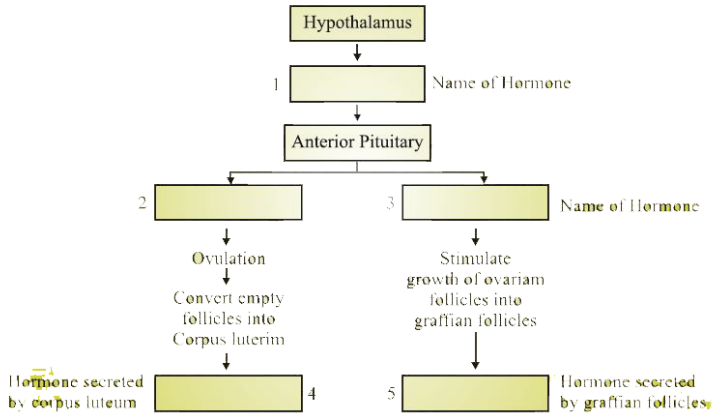


[View Text Solution](#)

Questions Sa li

1. Study the flow char given below. Name the hormones involved at each stage and in

human female.



[View Text Solution](#)

2. Three of the steps of neuro - endocrine mechanism in respect of parturition are mentioned below.

Write the missing steps in proper swquence.

(a) Signals originate from fully developed foetus and placenta.

(b)

(c)

(d) Oxytocin causes strong uterine contraction

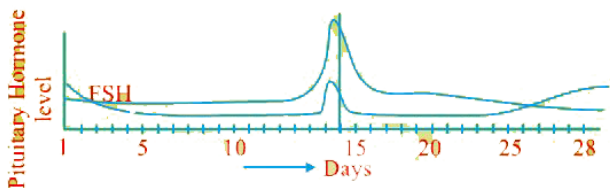
(e) Uterine contraction stimulates further secretion of oxytocin.

(f)



View Text Solution

3. Read the graph given below. Correlate the ovarian events that take place in the human female according to the level of the pituitary hormone during the following day.



(i) 10th - 14th days (ii) 14th - 15th days (iii) 16th - 23th days (iv) 25th - 29th days

(If the ovum is not fertilised)

 [View Text Solution](#)

4. What are the uterine events that follow beyond 29th day if the ovum is not fertilised.



[Watch Video Solution](#)

5. T.S. of mammalian testis revealing seminiferous tubules show different types of cell. Name the two types of cells of germinal epithelium.



[View Text Solution](#)

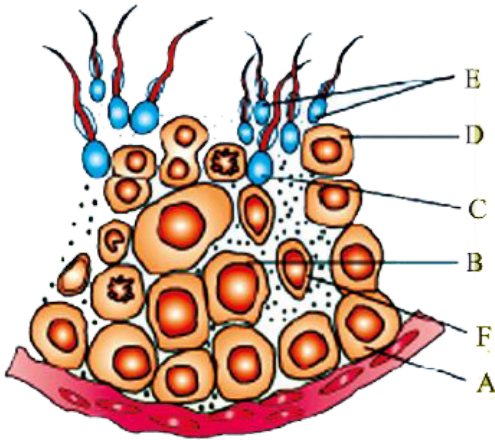
6. T.S. of mammalian testis revealing seminiferous tubules show different types of cell. Name of cells scattered in connective tissue and lying between seminiferous tubules.

Differentiate between them on the basis of their functions.



[View Text Solution](#)

Questions La



1.

Study the figure given:

(i) Pick out the name of cells that undergo spermiogenesis.

(ii) Name A, B, C and F.

(iii) Give ploidy of B and E.

Mention the function of 'F' cell.



[View Text Solution](#)

