



BIOLOGY

BOOKS - NCERT BIOLOGY (ENGLISH)

HOW DO ORGANISMS REPRODUCE

Mcqs

1. In the list of organisms given below, those that reproduce by the asexual method are

(i) banana (ii) dog

(iii) yeast (iv) Amoeba

A. (ii) and (iv)

B. (i), (iii) and (iv)

C. (i) and (iv)

D. (ii), (iii) and (iv)

Answer: B



Watch Video Solution

2. In a flower, the parts that produce male and female gametes (germ cells) are

- A. stamen and anther
- B. filament and stigma
- C. anther and ovary
- D. stamen and style

Answer: C



Watch Video Solution

3. Which of the following is the correct sequence of events of sexual reproduction in a flower?

A. Pollination, fertilisation, seedling, embryo

B. Seedling, embryo, fertilisation, pollination

C. Pollination, fertilisation, embryo, seedling

D. Embryo, seedling, pollination,
fertilisation

Answer: C



Watch Video Solution

4. Offspring formed by asexual method of reproduction have greater similarity among themselves because

(i) Asexual reproduction involves only one parent

(ii) Asexual reproduction does not involve gametes

(iii) Asexual reproduction occurs before sexual reproduction

(iv) Asexual reproduction occurs after sexual reproduction

A. (i) and (ii)

B. (i) and (iii)

C. (ii) and (iv)

D. (iii) and (iv)

Answer: A



Watch Video Solution

5. Characters transmitted from parents to offspring are present in

A. cytoplasm

B. ribosome

C. golgi bodies

D. genes

Answer: D



6. Characters that are transmitted from parents to offspring during reproduction show

A. only similarities with parents

B. only variations with parents

C. both similarities and variations with parents

D. neither similarities nor variations

Answer: C



Watch Video Solution

7. A feature of reproduction that is common to Amoeba, Spirogyra and yeast is that

- A. they reproduce asexually
- B. they are all unicellular
- C. they reproduce only sexually
- D. they are all multicellular

Answer: A



Watch Video Solution

8. In Spirogyra, asexual reproduction takes place by

A. breaking up of filaments into smaller bits

B. division of a cell into two cells

C. division of a cell into many cells

D. formation of young cells from older cells

Answer: A



Watch Video Solution

9. The ability of a cell to divide into several cells during reproduction in Plasmodium is called

A. budding

B. reduction division

C. binary fission

D. multiple fission

Answer: D



Watch Video Solution

10. The correct sequence of reproductive stages seen in flowering plants is

A. gametes, zygote, embryo, seedling

B. zygote, gametes, embryo, seedling

C. seedling, embryo, zygote, gametes

D. gametes, embryo, zygote, seedling

Answer: A



Watch Video Solution

11. The number of chromosomes in parents and offsprings of a particular species remains constant. due to

A. doubling of chromosomes after zygote formation

B. halving of chromosomes during gamete formation

C. doubling of chromosomes after gamete formation

D. halving of chromosomes after gamete formation

Answer: B



Watch Video Solution

12. In Rhizopus, tubular thread-like structures bearing sporangia at their tips are called

A. filaments

B. hyphae

C. rhizoids

D. roots

Answer: B



Watch Video Solution

13. Vegetative propagation refers to formation of new plants from

A. stem, roots and flowers

B. stem, roots and leaves

C. stem, flowers and fruits

D. stem, leaves and flowers

Answer: B



Watch Video Solution

14. Factors responsible for the rapid spread of bread mould on slices of bread are

(i) large number of spores

(ii) availability of moisture and nutrients in bread

(iii) presence of tubular branched hyphae

(iv) formation of round shaped sporangia

A. (i) and (iii)

B. (ii) and (iv)

C. (i) and (ii)

D. (iii) and (iv)

Answer: C



Watch Video Solution

15. Length of pollen tube depends on the distance between

A. pollen grain and upper surface of stigma

B. pollen grain on upper surface of stigma

and ovule

C. pollen grain in anther and upper surface
of stigma

D. upper surface of stigma and lower part
of style

Answer: B



Watch Video Solution

16. Which of the following statements are true
for flowers?

(i) Flowers are always bisexual

(ii) They are the sexual reproductive organs

(iii) They are produced in all groups of plants

(iv) After fertilisation they give rise to fruits

A. (i) and (iv)

B. (ii) and (iii)

C. (i) and (iii)

D. (ii) and (iv)

Answer: D



Watch Video Solution

17. Which among the following statements are true for unisexual flowers?

(i) They possess both stamen and pistil.

(ii) They possess either stamen or pistil.

(iii) They exhibit cross pollination.

(iv) Unisexual flowers possessing only stamens cannot produce fruits.

A. (i) and (iv)

B. (ii), (iii) and (iv)

C. (iii) and (iv)

D. (i), (iii) and (iv)

Answer: B



Watch Video Solution

18. Which among the following statements are true for sexual reproduction in flowering plants?

- (i) It requires two types of gametes.
- (ii) Fertilisation is a compulsory event.
- (iii) It always results in formation of zygote.
- (iv) Offspring formed are clones.

A. (i) and (iv)

B. (i), (ii) and (iv)

C. (i), (ii) and (iii)

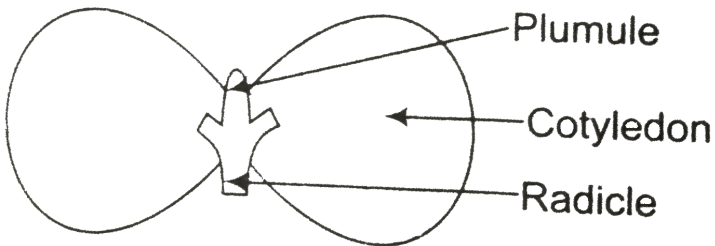
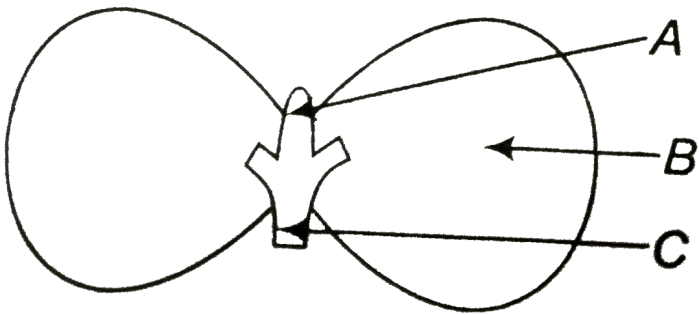
D. (i), (ii) and (iv)

Answer: C



Watch Video Solution

19. In figure the parts A, B and C are sequentially



A. cotyledon, plumule and radicle

B. plumule, radicle and cotyledon

C. plumule, cotyledon and radicle

D. radicle, cotyledon and plumule

Answer: C



Watch Video Solution

20. Offspring formed as a result of sexual reproduction exhibit more variations because

A. sexual reproduction is a lengthy process

B. genetic material comes from two parents of the same species

C. genetic material comes from two parents of different species

D. genetic material comes from many parents

Answer: B



Watch Video Solution

21. Reproduction is essential for living organisms to order to

- A. keep the individual organism alive
- B. fulfill their energy requirement
- C. maintain growth
- D. continue the species generation after generation

Answer: D



Watch Video Solution

22. During adolescence, several changes occur in the human body. Mark one change associated with sexual maturation in boys

- A. loss of milk teeth
- B. increase in height
- C. cracking of voice
- D. weight gain

Answer: C



Watch Video Solution

23. In human females, an event that reflects onset of reproductive phase is

A. growth of body

B. changes in hair pattern

C. change in voice

D. menstruation

Answer: D



Watch Video Solution

24. In human males, the testes lie in the scrotum, because it helps in the

- A. process of mating
- B. formation of sperm
- C. easy transfer of gametes
- D. All of these

Answer: B



Watch Video Solution

25. Which among the following is not the function of testes at puberty?

(i) Formation of germ cells (ii) Secretion of testosterone

(iii) Development of placenta (iv) Secretion of estrogen

A. (i) and (ii)

B. (ii) and (iii)

C. (iii) and (iv)

D. (i) and (iv)

Answer: C



Watch Video Solution

26. The correct sequence of organs in the male reproductive system for transport of sperms is

A. testis → vas deferens → urethra

B. testis → ureter → urethra

C. testis → urethra → ureter

D. testis → vas deferens → ureter

Answer: A



Watch Video Solution

27. Which among the following diseases is not sexually transmitted?

A. Syphillis

B. Hepatitis

C. HIV-AIDS

D. Gonorrhoea

Answer: B



Watch Video Solution

Short Answer Type Questions

1. In a bisexual flower inspite of the young stamens being removed artificially, the flower produces fruit. Provide a suitable explanation for the above situation.



Watch Video Solution

2. Can you consider cell division as a type of reproduction in unicellular organism? Give one reason.



Watch Video Solution

3. What is a clone? Why do offsprings formed by asexual reproduction exhibit remarkable similarity?



Watch Video Solution

4. Explain how, offspring and parents of organisms reproducing sexually have the same number of chromosomes?



[Watch Video Solution](#)

5. Colonies of yeast fail to multiply in water, but multiply in sugar solution. Give one reason for this.



[Watch Video Solution](#)

6. Why does bread mould grow profusely on a moist slice of bread rather than on a dry slice of bread?



Watch Video Solution

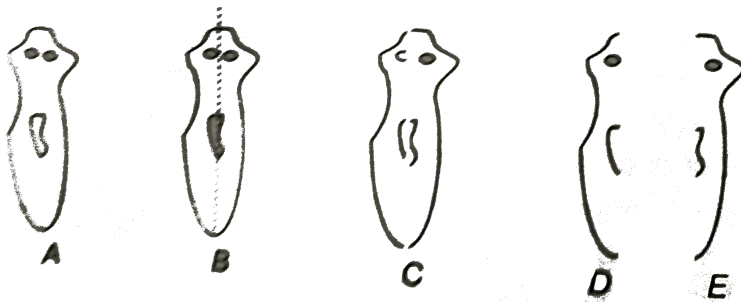
7. Give two reasons for the appearance of variations among the progeny formed by sexual reproduction.



Watch Video Solution

8. Would a Planaria cut vertically into two halves regenerate into two individuals?

Complete the given figure D and E by indicating the regenerated regions.



[Watch Video Solution](#)

9. From the internet, gather information about the chromosome numbers of five animals and five plants. Correlate the number with the size of organism and answer the following questions.

(a) Do larger organisms have more number of chromosomes/cells?

(b) Can organism with fewer chromosomes reproduce more easily than organisms with more number of chromosomes?

(c) More the number of chromosomes/cells greater is the DNA content. Justify.



[Watch Video Solution](#)

10. In tobacco plant, the male gametes have twenty four chromosomes. What is the number of chromosomes in the female gamete? What is the number of chromosomes in the zygote?



[Watch Video Solution](#)

11. Why cannot fertilisation take place in flowers if pollination does not occur?



Watch Video Solution

12. Is the chromosome number of zygote, embryonal cells and adult of a particular organism always constant? How is the constancy maintained in these three stages?



Watch Video Solution

13. Where is the zygote located in the flower after fertilisation?



Watch Video Solution

14. Reproduction is linked to stability of population of a species. Justify the statement.



Watch Video Solution

15. How are general growth and sexual maturation different from each other?



Watch Video Solution

16. Trace the path of sperm during ejaculation and mention the gland and their functions associated with the male reproductive system.



Watch Video Solution

17. What changes are observed in the uterus if fertilisation does not occur?



Watch Video Solution

18. What changes are observed in the uterus subsequent to implantation of young embryo?



Watch Video Solution

19. What are the benefits of using mechanical barriers during sexual act?

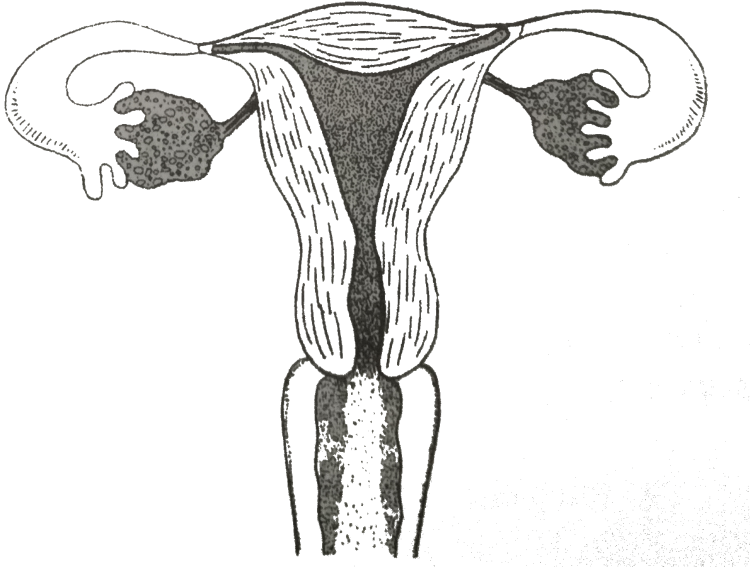


Watch Video Solution

20. In the given figure label the parts and mention their functions

(a) Production of egg (b) Site of fertilisation

(c) Site of implantation (d) Entry of the sperms



[Watch Video Solution](#)

21. What would be the ratio of chromosome number between an egg and its zygote? How

is the sperm genetically different from the egg?



[Watch Video Solution](#)

Long Answer Type Questions

1. Why are budding, fragmentation and regeneration all considered as asexual types of reproduction? With neat diagrams explain the process of regeneration in Planaria.



[Watch Video Solution](#)

2. Write two points of difference between asexual and sexual types of reproduction. Describe why variations are observed in the offspring formed by sexual reproduction.



Watch Video Solution

3. Distinguish between pollination and fertilisation. Mention the site and product, of fertilisation in a flower. Draw a neat, labelled

diagram of a pistil showing pollen tube growth and its entry into the ovule.



[Watch Video Solution](#)

4. Distinguish between a gamete and zygote.

Explain their roles in sexual reproduction.



[Watch Video Solution](#)

5. Draw the diagram of a flower and label the

four whorls. Write the names of gamete

producing organs in the flower.



Watch Video Solution

6. Role Of Placenta In Pregnancy



Watch Video Solution

7. What are various ways to avoid pregnancy?

Elaborate any one method.



Watch Video Solution

8. How does fertilisation take place?

Fertilisation occurs once in a month.

Comment.



Watch Video Solution

9. How does reproduction help in providing stability to population of species?



Watch Video Solution

10. Describe sexually transmitted diseases and mention the ways to prevent them.



Watch Video Solution