



BIOLOGY

BOOKS - NCERT BIOLOGY (ENGLISH)

MINERAL NUTRITION

Mcqs

1. Which one of the following roles is not characteristic of an essential element?

- A. being a component of biomolecules
- B. changing the chemistry of soil
- C. being a structural component of energy related chemical
- D. activation or inhibition of enzymes

Answer: B



Watch Video Solution

2. Which one of the following statements can best explain the term critical concentration of an essential element?

- A. essential element concentration below which plant growth is retarded
- B. essential element concentration below which plant growth becomes enhanced
- C. essential element concentration below which plant remains in the vegetative phase
- D. None of the above

Answer: A



[Watch Video Solution](#)

3. Deficiency symptoms of an element tend to appear first in young leaves. It indicates that the element is relatively immobile.

Which one of the following elemental deficiency would show such symptoms?

- A. Sulphur
- B. Magnesium
- C. Nitrogen
- D. Potassium

Answer: A



[Watch Video Solution](#)

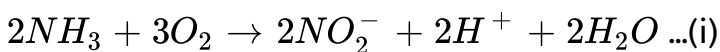
4. Which one of the following symptoms is not due to manganese toxicity in plants?

- A. Calcium translocation in shoot apex is inhibited
- B. Deficiency in both iron and nitrogen induced
- C. Appearance of brown spot surrounded by chlorotic veins
- D. None of the above

Answer: D

 [Watch Video Solution](#)

5. Reaction carried out by N_2 fixing microbes include



$2NO_2^- + O_2 \rightarrow 2NO_3^- \dots(ii)$ Which of the following statements

about these equations is not true?

- A. step (i) is carried out by Nitrosomonas or Nitrococcus
- B. step (ii) is carried out by Nitrobacter
- C. Both steps (i) and (ii) can be called nitrification
- D. Bacteria carrying out these steps are usually photoautotrophs

Answer: D

 [Watch Video Solution](#)

6. With regard to the biological nitrogen fixation by Rhizobium in association with soy bean, which one of the following statement/statements does not hold true?

- A. Nitrogenase may require oxygen for its functioning.
- B. Nitrogenase is Mo-Fe protein

C. Leg-haemoglobin is a pink coloured pigment.

D. Nitrogenase helps to convert N_2 gas into two molecules of ammonia.

Answer: A



Watch Video Solution

7. Match the element with its associated functions/roles and choose the correct option among given below.

- | | |
|---------------|---------------------------------------------------|
| A. Boron | (i). Splitting of H_2O to liberate O_2 during |
| B. Manganese | (ii). Needed for synthesis of auxins |
| C. Molybdenum | (iii). component of nitrogenase |
| D. Zinc | (iv). Pollen germination |
| E. Iron | (v). Component of ferredoxin |

A. 1, 2, 3, 4, 5

B. 4, 1, 3, 2, 5

C. 3, 2, 4, 5, 1

D. 2, 3, 5, 1, 4

Answer: B



Watch Video Solution

8. Plants can be grown in (Tick the incorrect option)

A. soil with essential nutrients.

B. water with essential nutrients.

C. either water or soil with essential nutrients.

D. water or soil without essential nutrients.

Answer: C



Watch Video Solution

Very Short Answer Type Questions

1. Name a plant, which accumulate silicon.

 [Watch Video Solution](#)

2. Mycorrhiza is a mutualistic association. How do the organisms involved in this association gain from each other ?

 [Watch Video Solution](#)

3. Nitrogen fixation is shown by prokaryotes and not eukaryotes.
Comment.

 [Watch Video Solution](#)

4. Carnivorous plants like Nepenthes and venus fly trap have nutritional adaptations. Which nutrient to they especially obtain and from where ?

 [Watch Video Solution](#)

5. Think of a plant which lacks chlorophyll. From where will it obtain nutrition ? Give an example of such a type of plant .

 [Watch Video Solution](#)

6. Name an insectivorous angiosperm.

 [Watch Video Solution](#)

7. A farmer adds Azotobacter culture to soil before sowing maize.

Which mineral element will be replenished by doing so?



[Watch Video Solution](#)

8. _____ conditions are created by leghaemoglobin in the root nodule of a legume.



[Watch Video Solution](#)

9. Nepenthes, Dionaea, Drosera and Utricularia are



[Watch Video Solution](#)

10. Plants with zinc deficiency show reduced biosynthesis of

 [Watch Video Solution](#)

11. Yellowish edges appear in leaves deficient in

 [Watch Video Solution](#)

12. The macronutrient_____is a component of all organic compounds but is not obtained from soil.

 [Watch Video Solution](#)

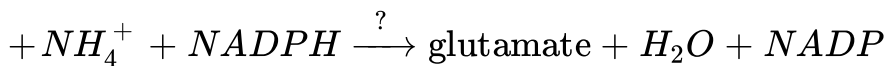
13. Name one non-symbiotic nitrogen fixing prokaryote .

 [Watch Video Solution](#)

14. Rice fields produce an important green house gas. Name it.

 [Watch Video Solution](#)

15. Complete the equation for reductive amination



 [Watch Video Solution](#)

16. Excess of Mn in soil leads to deficiency of Ca, Mg and Fe.

Justify.

 [Watch Video Solution](#)

Short Answer Type Questions

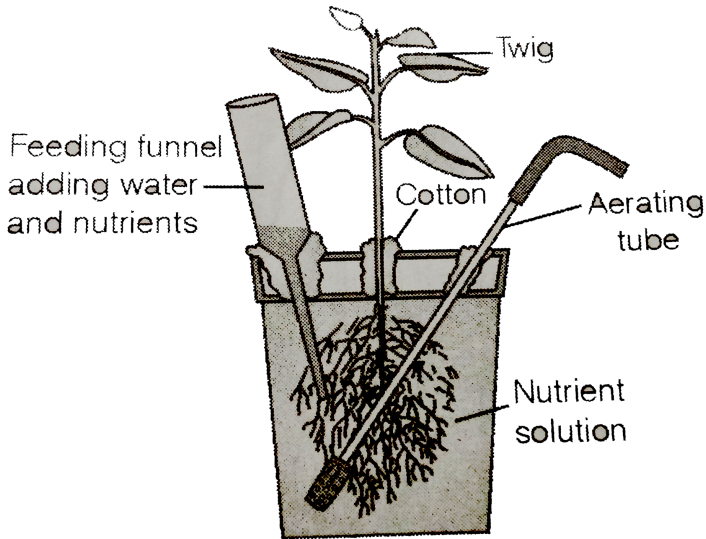
1. How is sulphur important for plants ? Name the amino acids in which it is present.

 [Watch Video Solution](#)

2. How are organisms like Pseudomonas and Thiobacillus of great significance in nitrogen cycle ?

 [Watch Video Solution](#)

3. Carefully observed the following figure



(a) Name the technique shown in the figure and the scientist who demonstrated this technique for the first time.

(b) Name atleast three plants for which this technique can be employed for their commercial production.

(c) What is the significance of aerating tube and feeding funnel in this setup ?

 [Watch Video Solution](#)

4. Name the most crucial enzyme found in root nodules for N_2 -fixation ? Does it require a special pink coloured pigment for its functioning ? Elaborate.

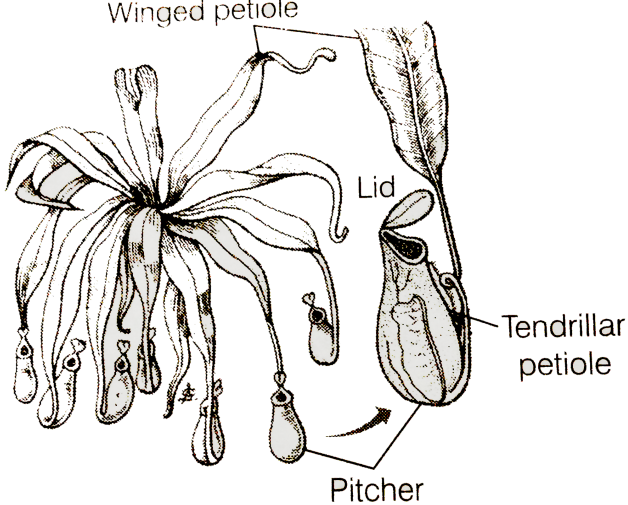
 [Watch Video Solution](#)

5. How are the terms 'critical concentration' and 'deficient' different from each other in terms of concentration of an essential element in plants ?

Can you find the values of 'critical concentration' and 'deficient' for minerals -Fe and Zn ?

 [Watch Video Solution](#)

6. Carnivorous plants exhibit nutritional adaptation . Citing an example explain this fact.



***Nepenthes* showing Pitcher shaped leaf**

[▶ Watch Video Solution](#)

7. A farmer adds/supplies Na, Ca, Mg and Fe regularly to his field and yet he observes that the plants show deficiency of Ca, Mg and Fe. Give a valid reason and suggest a way to help the farmer improve the growth of plants.

[▶ Watch Video Solution](#)

Long Answer Type Questions

1. It is observed that deficiency of a particular element showed its symptoms initially in older leaves and then in younger leaves.

(a) Does it indicate that the element is actively mobilised or relatively immobile ?

(b) Name two elements which are highly mobile and two which are relatively immobile.

(c) How is the aspect of mobility of elements important to horticulture and agriculture ?

 [Watch Video Solution](#)

2. We find that Rhizobium forms nodules on the roots of leguminous plants. Also Frankia another microbe forms nitrogen fixing nodules on the roots of non-leguminous plant Alnus.

- (a) Can we artificially induce the property of nitrogen-fixation in a plant, leguminous or non-leguminous ?
- (b) What kind of relationship is observed between mycorrhiza and pine trees ?
- (c) Is it necessary for a microbe to be in close association with a plant to provide mineral nutrition ? Explain with the help of one example.



[View Text Solution](#)

3. What are essential elements for plants ? Give the criteria of essentiality ? How are minerals classified depending upon the amount in which they are needed by the plants ?



[Watch Video Solution](#)

4. With the help of examples describe the classification of essential elements based on the function they perform.

 [Watch Video Solution](#)

5. We know that plants require nutrients. If we supply these in excess, will it be beneficial to the plants ? If yes, how/ if no, why ?

 [Watch Video Solution](#)

6. Trace the events starting from the coming in contact of Rhizobium to a leguminous root till nodule formation. Add a note on importance of leg haemoglobin.

 [Watch Video Solution](#)

7. Give the biochemical events occurring in the root nodule of a pulse plant. What is the end product? What is its fate ?



[Watch Video Solution](#)

8. Hydroponics have been shown to be a successful technique for growing of plants. Yet most of the crops are still grown on land . Why ?



[Watch Video Solution](#)